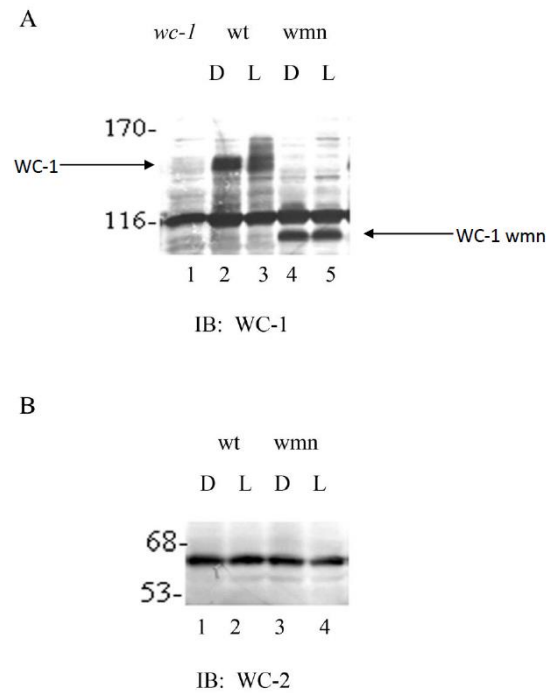
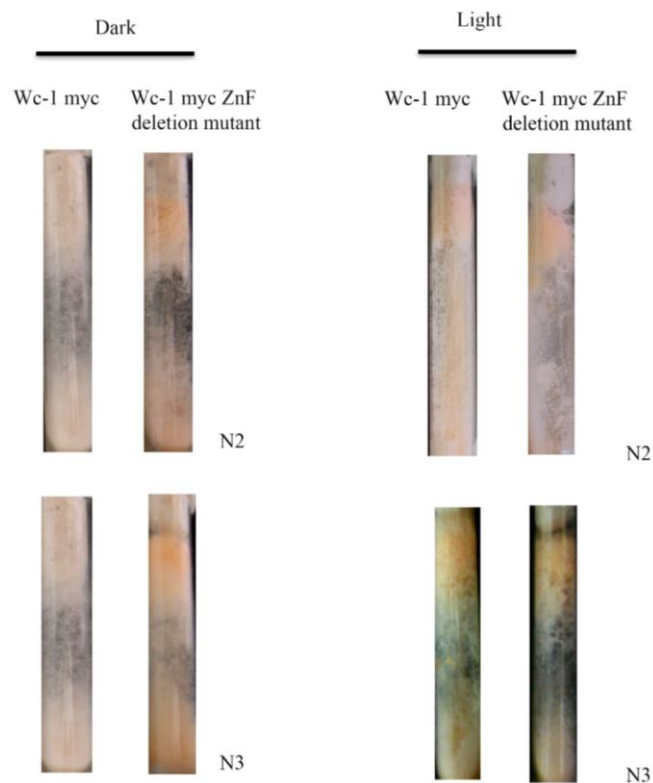


## Supplementar Figures

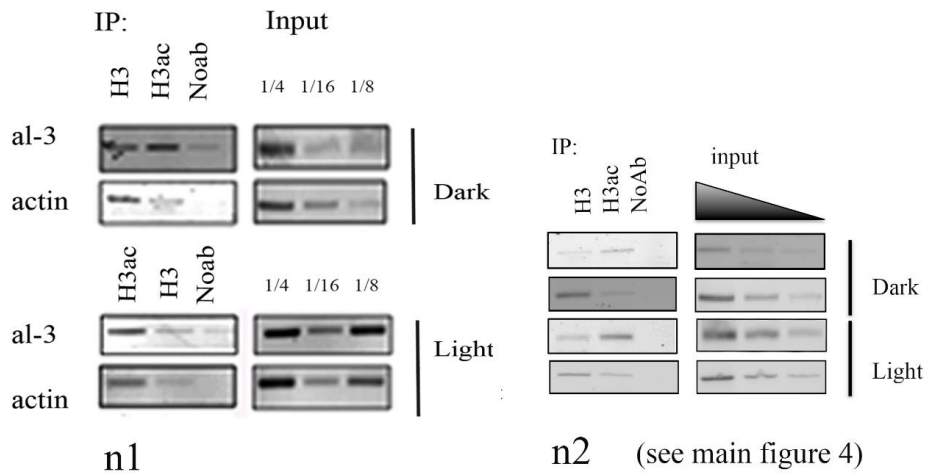


**Figure S1.** (A) WC-1 was detected on extracts (input used for IP in Figure 1C) obtained from *wc-1* null mutant (negative control), wt and *wmn* mutant in the dark and after illumination. Arrows indicate different sizes for WC-1 in Wt and *wmn* mutant. (B) WC-2 was detected in wt and *wmn* samples.

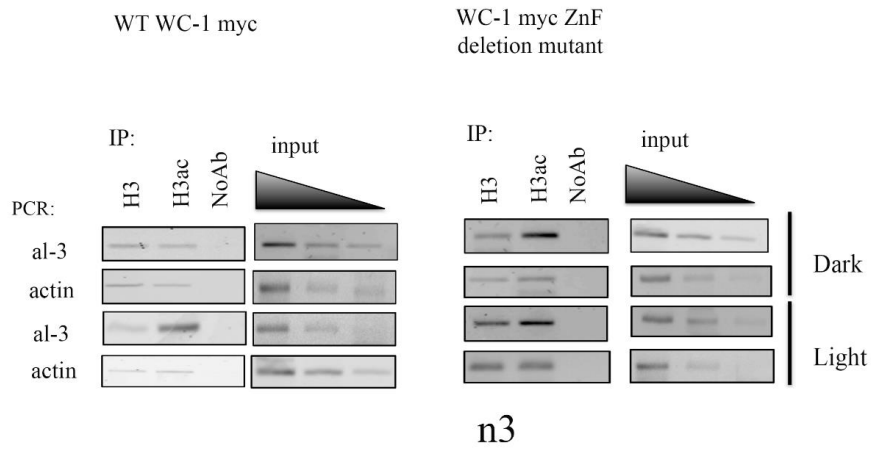


**Figure S2.** Phenotype analysis related to Figure 3B. Replica experiments performed on WT WC-1 Myc and WC-1 Myc ZnF  $\Delta$  mutant following the protocol described in Figure 3B.

A



B



**Figure S3.** (A) Row data representing ChIP replicas used for quantification in Figure 4D (n1, n2 and n3 showed in (B)). Replica n2 is shown in the main figure as representative example. (B) Comparison between representative ChIP analyses performed in wt WC-1 Myc and ZnF  $\Delta$  mutant.