

RESEARCH ARTICLE

Open Access



Investigation of anterior cingulate cortex gamma-aminobutyric acid and glutamate-glutamine levels in obsessive-compulsive disorder using magnetic resonance spectroscopy

Yan Li^{1†}, Chen Cheng Zhang^{2†}, Kathrin Weidacker³, Yingying Zhang², Naying He¹, Haiyan Jin⁵, Weibo Chen⁴, Valerie Voon³, Richard A. E. Edden⁶ and Fuhua Yan^{1*}

Abstract

Background: Obsessive-compulsive disorder (OCD) is a relatively common and disabling psychiatric disorder whose pathophysiology is incompletely understood. In this study, we utilized magnetic resonance spectroscopy (MRS) in an effort to provide a better understanding of the role of brain gamma-aminobutyric acid (GABA) and glutamate in the pathophysiology of OCD. We hypothesized that beyond the separate effects of these neurotransmitter systems, a disruption in the balance between GABA and glutamate could be particularly relevant to OCD.

Methods: We obtained MRS measures of GABA and glutamate concentrations in the anterior cingulate cortex from 23 adult patients with OCD and 20 sex- and age-matched healthy community volunteers. Established clinical rating scales were used to assess the severities of OCD, anxiety, and depression symptoms. Statistical analysis involved the assessment of patient-control group differences in the individual measures of GABA and glutamate, as well as in the ratio of the GABA to glutamate measures. Additionally, we explored whether differences in the MRS measures existed between two subgroups of patients formed according to the severity of their OCD symptoms. Finally, we assessed the relations of demographic and clinical variables to the MRS measures.

Results: Patients with OCD displayed a higher estimated GABA level and a higher GABA to glutamate ratio than healthy participants, but no significant group differences were observed in the measure of glutamate. The MRS measures did not vary by subgroup and showed no correlations with demographic and clinical variables.

Conclusions: These results indicate that GABA abnormalities within the anterior cingulate cortex contribute to the pathophysiology of OCD. The results fail to provide evidence that glutamate abnormalities alone are involved in adult OCD. Yet, it seems that a disruption in the balance between glutamate and GABA neurotransmission may have a particularly important role to play in OCD pathophysiology.

Keywords: Obsessive-compulsive disorder, Pathophysiology, H-MR spectroscopy, Glutamate-glutamine, GABA

* Correspondence: yfh11655@rjh.com.cn

[†]Yan Li and ChenCheng Zhang contributed equally to this work.

¹Department of Radiology, Ruijin Hospital, Shanghai Jiaotong University School of Medicine, Shanghai, China

Full list of author information is available at the end of the article



Background

Obsessive-compulsive disorder (OCD) is a psychiatric disorder that afflicts approximately 1–3% of the general population. This disorder is characterized by recurrent intrusive thoughts (obsessions) and repetitive behaviors or mental acts (compulsions), the latter typically performed in response to obsessions or related anxiety [1]. OCD is a debilitating psychiatric disorder, ranked by the World Health Organization as one of the 10 most disabling illnesses in middle age due to loss of income and diminished quality of life [2]. Current treatment of OCD mainly consists of serotonergic medications, but a substantial portion of patients do not respond or respond insufficiently to these medications which makes it important to investigate the role of other neurotransmitters such as gamma-aminobutyric (GABA) and glutamate and their role in OCD. [2]. Despite its impact on patients, their families, and society as a whole, the pathophysiology of OCD remains incompletely understood. Clinical studies indicate that dysfunction of multiple neurotransmitter systems contributes to the pathophysiology of OCD. Initially, dysfunction of the central serotonergic system has been implicated on the basis of the observed therapeutic effects of selective serotonin reuptake inhibitors on OCD symptoms [2, 3]. Subsequent studies using positron emission tomography (PET) or single photon emission computed tomography (SPECT) have implicated additional neurotransmitters in the pathophysiology of OCD. For example, it has been reported that patients with OCD exhibit decreased striatal dopamine D2 receptor binding compared to healthy controls [4], which indicates that enhanced activity of the mesolimbic dopaminergic system could be involved in OCD pathophysiology. Also, patients with OCD have been characterized by increased glucose metabolism in the orbitofrontal cortex [5, 6]. Moreover, studies using magnetic resonance spectroscopy (MRS) have documented abnormalities in the levels of neurotransmitter-related metabolites in several distinct brain areas of patients with OCD [7], including decreased glutamate-glutamine (Glx) concentrations in the anterior cingulate cortex (ACC) [8] and increased gamma-aminobutyric (GABA) concentrations in the medial prefrontal cortex [9]. These clinical studies have contributed to the hypothesis that dysfunctions within cortico-striato-thalamo-cortical (CSTC) brain circuitry are fundamental to the pathophysiology of OCD.

These clinical studies have provided important clues about the pathophysiology of OCD, but the observed patient-control differences are usually small in size and do not exhibit high levels of consistency across studies [3, 10]. It seems that at least three factors make the interpretation of results difficult. First, most studies have examined only one neurotransmitter system, without taking into account the dynamic interactions occurring

between different systems. It has been suggested, indeed, that the balance between the excitatory neurotransmitter glutamate and the inhibitor GABA is particularly relevant to the integrity of brain and cognitive function in both healthy and psychiatrically ill populations [11]. Second, OCD is usually considered as a simple homogeneous diagnostic entity, and not as a complex and etiologically and biologically heterogeneous disorder. Although no consensus exists about the number, nature, and identification of OCD subtypes, it would be informative to consider different subgroups of patients formed according to a basic clinical feature as illness severity or onset age. And third, in MRS studies it can be difficult to obtain accurate measures of the brain metabolites of interest due to a lack of sensitivity to the low concentrations present in the specific brain region examined and to spectral overlap with other signals and macromolecules. The present study was designed to overcome these three limitations.

In this study, we utilized MRS in an effort to provide a better understanding of the role of brain GABA and glutamate in the pathophysiology of OCD. To achieve this aim, we measured both GABA and Glx concentrations in the ACC of patients with OCD and matched healthy control participants. Moreover, we utilized the ratio of GABA to Glx in an effort to assess the balance between GABA and glutamate [12, 13]. As a key node in CSTC circuit, the ACC was chosen as the region of interest because this component of the CSTC seems especially relevant to the clinical symptoms of OCD, as well as to the disruption of cognitive and emotional functioning often seen in affected patients [14]. Furthermore, deep brain stimulation and ablative surgery of the ACC have been found to alleviate symptoms of severe, treatment-refractory cases of OCD [15], which exemplifies the important role the ACC plays in OCD.

Additionally, we examined whether differences in our measures of GABA and glutamate existed between two subgroups of patients formed according to the severity of their OCD symptoms. Finally, we employed a modified MRS technique to obtain reliable estimates of in vivo GABA and glutamate concentrations. Assuming that abnormalities of GABA and glutamate are indeed linked to the pathophysiology of OCD, we hypothesized that the patients with OCD and healthy controls would differ in the measured levels of GABA and glutamate in the ACC. If this hypothesis were to be confirmed, MRS-based measures of brain GABA and glutamate could potentially be developed into quantitative biomarkers to aid the diagnosis or treatment of patients with OCD.

According to our findings, the patients with OCD showed a higher GABA+ level and a higher GABA+/Glx ratio in the ACC compared to healthy control participants, but no significant group differences were

observed in the level of Glx, which confirmed our hypothesis that the dynamic interplay between excitatory glutamate and inhibitory GABA neurotransmission is particularly involved.

Materials and methods

Participants

Study participants consisted of 23 patients with OCD and 20 healthy control (HC) participants between the ages of 24 and 50 years. Inclusion criteria for patients were: (1) diagnosis of OCD made by a licensed psychologist or psychiatrist on the basis of a clinical interview according to DSM-IV-TR (Diagnostic and Statistical Manual of Mental Disorders), (2) aged between 18 and 70 years, and (3) no visible MRI structural abnormality. Exclusion were: (1) diagnosis of intellectual disability or psychotic disorder, and (2) contraindications to MRI scanning. All participants were asked to stop medication for 24 h before scanning. Age- and sex-matched HCs who have no psychiatric or neurological disease were recruited from the local community through advertisements. Initially, the number of study participants recruited was higher than the number indicated above, but one patient and two control participants had to be excluded from analysis due to excessive motion artifacts during MRI scanning.

Ethical statement

This study was approved by the ethics committee of our hospital. All participants provided written informed consent.

Clinical assessments and subgrouping

Two experienced clinicians assessed the severity of OCD, anxiety, and depression of the patients using the Yale-Brown Obsessive-Compulsive Scale (Y-BOCS) [16, 17], Hamilton Anxiety Rating Scale (HAMA) [18], and the 17-item Hamilton Depression Rating Scale (HAM-D-17) [19]. As indicated in the Introduction, the patient group was divided into two subgroups that differed from one another in OCD symptom severity, as measured by using the total Y-BOCS score: one subgroup of patients ($n = 7$) who displayed relatively 'moderate' OCD symptoms (Y-BOCS score < 25) and another subgroup ($n = 16$) who showed 'severe' symptoms (Y-BOCS score ≥ 25). Also, to explore potential effects of serotonergic medication treatment on our MRS measures, we compared one subgroup of patients ($n = 5$) who had never used serotonergic medication for their OCD to another subgroup of patients ($n = 18$) who had used medication (two types of selective serotonin reuptake inhibitors for at least 3 months) but had failed to show a clinical response.

MRI scans

All subjects were scanned using a 3.0 T MR scanner (Ingenia, Philips, Best, The Netherlands), with a fifteen-channel head coil. High-resolution 3D T1WI MRI images of the brain were obtained with the following parameters: repetition time/echo time (TR/TE) = 8.1/3.7 ms; isotropic voxel size = 1 mm³ by using the magnetization-prepared rapid gradient-echo sequence. The levels of GABA were measured using the MEGA-PRESS sequence [20], with the following parameters: TR/TE = 2000/68 ms, 14 ms editing pulses alternating at 1.9 ppm ("Edit-On") and 7.46 ppm ("Edit-Off") from the Larmor frequency of free water to separate the GABA molecule from other chemicals. The difference between the EDIT-ON and EDIT-OFF spectra yields the peaks affected by the editing pulses. The multiply optimized insensitive suppression train method was used to suppress the water signal and eight unsuppressed water averages were applied to quantify the concentration of GABA. The ACC was set as the volume of interest (VOI, 30 × 30 × 30 mm³, Fig. 1a-c), where the anterior genu is bounded in the genu of the corpus callosum, between the sulcus of the corpus callosum and the cingulate sulcus.

Data processing

Due to fitting limitations, it's unable to completely control for the potential contribution of macromolecules to the MRS signal detected. Therefore, in the remaining part of this paper, the signal detected at 3 ppm is labeled as GABA+ instead of GABA, indicating the potential contribution of these other compounds. The co-edited Glx peak was seen at 3.75 ppm and did not interfere with the GABA measurement. All GABA+ and Glx concentrations were quantified by using the MEGA-PRESS specialized tool Gannet v2.0 [21]. Levels of GABA+ and Glx were quantified by calculating the area under the curve; GABA+ levels were gauged via a GABA+/Water ratio. In Gannet, we used: (1) GannetLoad to process time-domain MRS data; (2) GannetFit to model the edited spectrum; (3) GannetCoRegister to generate a mask of the MRS voxel in T1-image space; (4) GannetSegment to derive gray matter (GM), white matter (WM), and cerebrospinal fluid (CSF) voxel fractions; and (5) GannetQuantify to calculate tissue-corrected GABA and Glx levels. A schematic picture of the data processing procedure is presented in Fig. 2.

The ratios of the integrals of the GABA+ and water signals, correcting for T1 and T2 relaxation times and partial volume effects, were used to calculate the water-scaled GABA+ concentration in mmol/L(mM) using the following formula [22]:

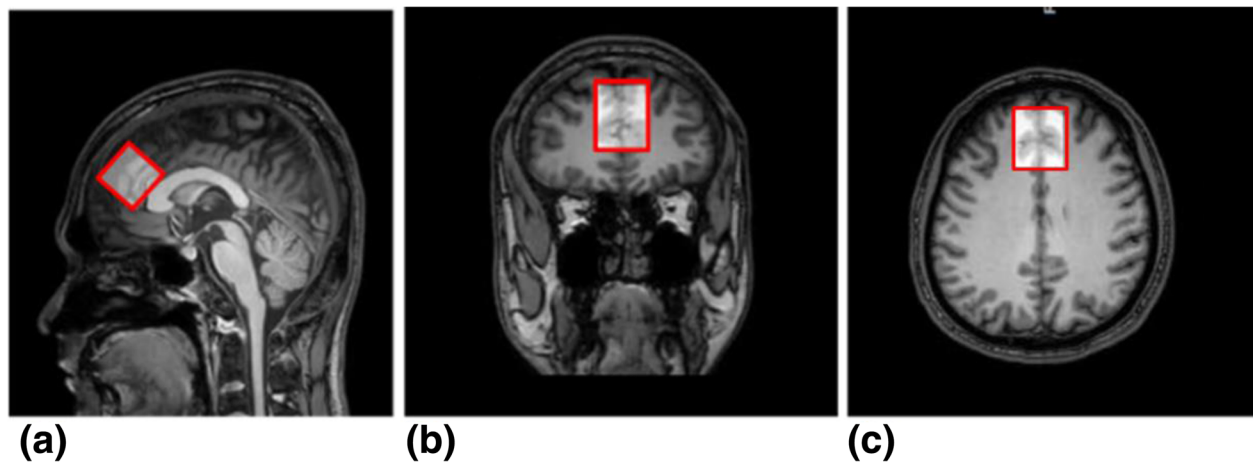


Fig. 1 Position of MRS region of interest. A region of interest (ROI) with a size of $30 \times 30 \times 30 \text{ mm}^3$ was created over the anterior cingulate cortex according to a high-resolution anatomic 3D T1WI MRI scan. The ROI is shown in (a) sagittal, (b) coronal, and (c) transversal orientations

$$[GABA] = \frac{I_G}{I_W} \times [H_2O] \times VIS_w \times \frac{f_{GM} \times R_{W-GM} + f_{WM} \times R_{W-WM} + f_{CSF} \times R_{W-CSF}}{(1-f_{CSF}) \times R_G} \times MMcor$$

where I_G and I_W are the fitting integrals of GABA+ (G), and water (W) as determined by Gannet, $[H_2O]$ is the pure water concentration (55,550 mmol/L), VIS_w is a factor accounting for MR water visibility and tissue proton density (0.65), and f_{GM} , f_{WM} and f_{CSF} are the fractions of water attributable to GM, WM and CSF respectively [22]. The relaxation attenuation factors are provided by the equation $R_{W-y} = \exp[-TE/T2_{w-y}](1 - \exp[-TR/T1_{w-y}])$, where $T1_{w-y}$ and $T2_{w-y}$ are the T1 and T2 water compartment relaxation times. Similarly, R_G is the relaxation attenuation factor for GABA. The relaxation times used were as follows: GM water: T1 = 1331 ms, T2 = 110 ms; WM water: T1 = 832 ms, T2 = 79.6 ms; CSF: T1 = 3817 ms, T2 = 503 ms [23–25]; GABA: T1 = 1310 ms, T2 = 88 ms [26, 27]. MMcor is a macromolecular correction factor (0.45) given by the fraction of the GABA+ peak that is considered to reflect GABA [28]. Gannet provides normalized residual fitting errors of GABA+, which can be interpreted quantitatively to assess measurement quality. Correspondingly, only spectra with a fitting error of GABA+ below 10% were included in the final analysis.

Each pixel in the 3D T1-weighted MRI images was segmented into GM, WM, and CSF using SPM8 [29]. VOIs were coregistered to the anatomical images using the “Re-creation of VOI” Matlab tool (as shown in Fig. 1). Tissue GM fractions were obtained by calculating the ratio of GM volume to the GM + WM

volumes in the VOIs. The concentrations of GABA in the CSF were considered to be negligible [30].

Statistical analysis

Independent-samples *t*-tests were conducted to assess mean differences between the OCD and HC groups in age, GABA+, Glx, GABA+/Glx ratio, and tissue composition (except for the GM data, which were analyzed using Mann-Whitney U tests). A chi-square test was performed to evaluate differences in the proportions of males and females between the OCD and HC groups. Independent-samples *t*-test were also used for all subgroup analyses within the patient group. Finally, Pearson correlation coefficients were computed to explore whether our MRS measures correlated with demographic and clinical variables. The statistical significance level was set at $p < 0.05$. SPSS v19.0 (IBM, Armonk, NY) was used to analyze the data.

Results

Sample characteristics

Table 1 presents demographic and clinical characteristics of the study participants. The OCD group did not differ significantly from the HC group in terms of sex composition and age, but not for education. The patients showed on average ‘severe’ OCD symptoms (mean Y-BOCS score = 29.0, $SD = 7.6$), ranging from mild (Y-BOCS score = 15) to extreme (Y-BOCS score = 40). The OCD symptoms of most patients became evident in late adolescence (mean age onset = 16.7, $SD = 7.6$). In addition to OCD, the patients displayed ‘moderate’ and ‘mild’ symptoms of anxiety (mean HAMA score = 18.4, $SD = 11.1$)

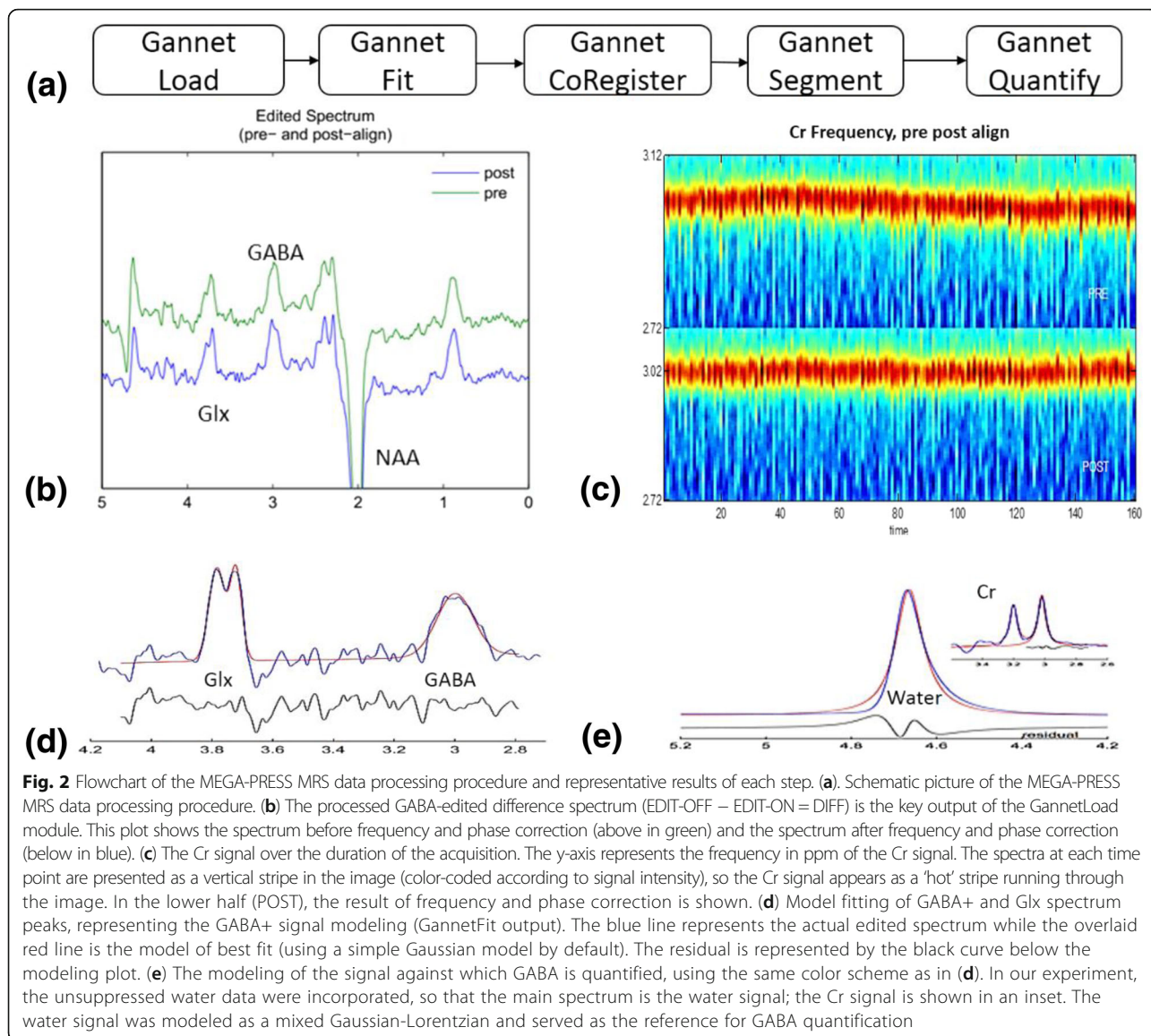


Table 1 Demographic and Clinical Characteristics of the OCD and HC Groups

	OCD (n = 23)	HC (n = 20)	t or χ^2	df	p
Mean age in years ± SD	31.7 ± 8.8	29.3 ± 5.6	1.061	37.846	0.295
Number of females/males	7/16	10/10	0.992	1	0.319
Mean age of OCD onset ± SD	17.2 ± 7.6	–	–	–	–
Mean years of education ± SD	16.8 ± 3.7	12.7 ± 3.2	–3.828	41	0.000*
Mean Y-BOCS ± SD	29.0 ± 7.8	–	–	–	–
Mean HAMA ± SD	18.4 ± 11.3	–	–	–	–
Mean HAMD-17 ± SD	14.1 ± 8.7	–	–	–	–

HAMA Hamilton Anxiety Rating Scale, HAMD-17 17-item Hamilton Depression Rating Scale HC healthy control, OCD obsessive-compulsive disorder, Yale-Brown Obsessive-Compulsive Scale

*p < 0.05

Table 2 ACC Metabolite Levels and Tissue Composition in the OCD and HC groups

	OCD (n = 23)	HC (n = 20)		
MRS metabolite	Mean ± SD (iu⁺)	Mean ± SD (iu)	t(df)	p
GABA+	2.41 ± 0.59	2.10 ± 0.35	2.05 (41)	0.047*
Glx	2.10 ± 0.49	2.23 ± 0.38	-0.97 (41)	0.34
GABA+/Glx Ratio	1.18 ± 0.30	0.96 ± 0.22	2.70 (41)	0.01*
Tissue composition	Mean Percentage ± SD	Mean ± SD	t(df)	p
Cerebral spinal fluid	0.17 ± 0.02	0.16 ± 0.02	1.82 (41)	0.0781
Gray matter	0.52 ± 0.03	0.52 ± 0.03	/	0.752
White matter	0.31 ± 0.04	0.32 ± 0.03	1.59 (41)	0.3431

⁺iu, institutional units; ACC anterior cingulate cortex, GABA gamma-aminobutyric acid, Glx glutamate-glutamine, MRS magnetic resonance spectroscopy, HC healthy control, OCD obsessive-compulsive disorder
 *significant between-group difference (p < 0.05)

and depression (mean HAMD-17 score = 14.1, SD = 8.5). Measures of tissue segmentation for both groups are provided in Table 2. There were no significant differences between the OCD and HC groups regarding tissue composition in the ACC ROI (all p > 0.078).

Differences between OCD and HC groups

Significant differences between the OCD and HC groups were observed in the level of GABA+ and the GABA+/Glx ratio (As shown in Fig. 3 and Table 2). The OCD group showed a higher level of GABA+ and a higher

GABA+/Glx ratio than the control group (Table 2), with the size of the between-group differences being medium (Cohen’s d = 0.64) and large (Cohen’s d = 0.84), respectively. By contrast, no significant differences between the OCD and HC groups were observed in the level of Glx.

Differences between OCD subgroups

Patients classified as having either relatively ‘moderate’ OCD or ‘severe’ OCD did not differ significantly from one another on the MRS measures (Table 3). Similarly, patients who had never received serotonergic medication treatment

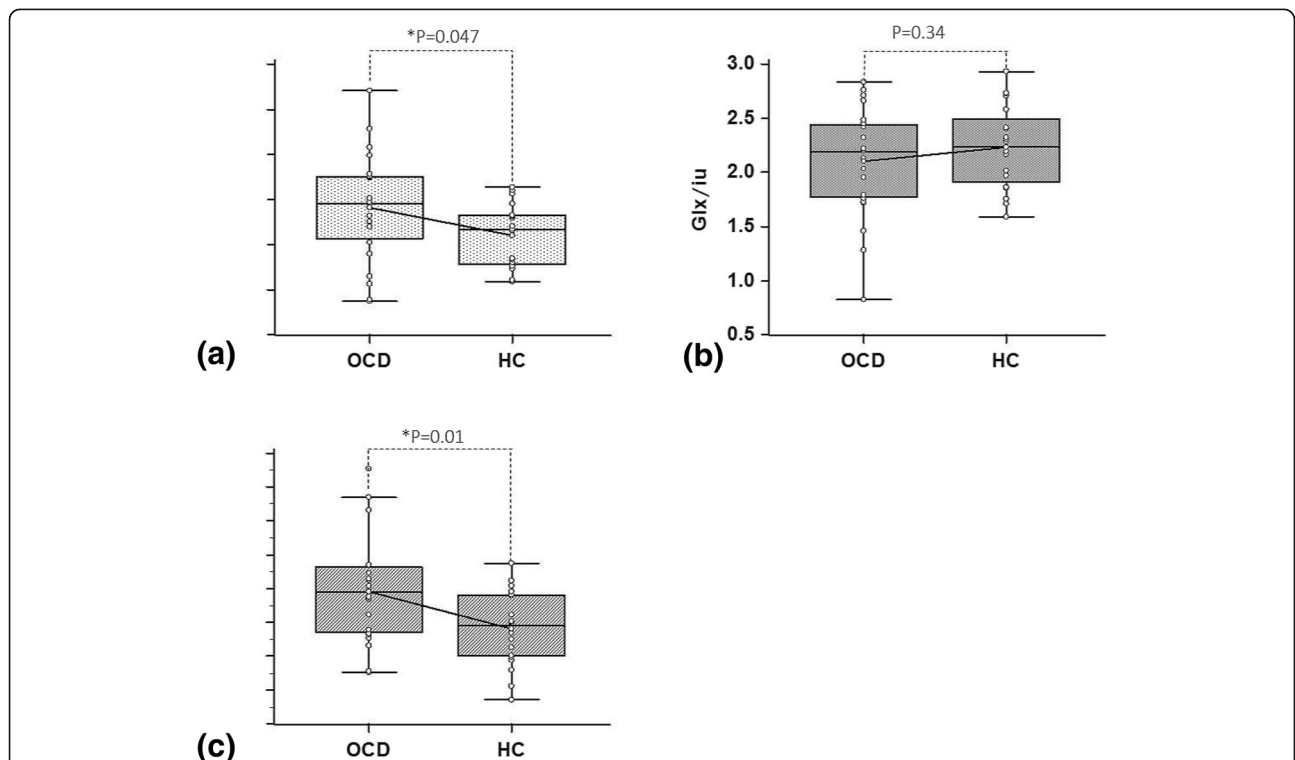


Fig. 3 Comparison between OCD and HC groups in **a** GABA+, **b** Glx and **c** GABA+/Glx values. Significant differences between the OCD and HC groups were observed in the level of GABA+ and the GABA+/Glx ratio. The OCD group showed a higher level of GABA+ and a higher GABA+/Glx ratio than the control group. By contrast, no significant differences between the OCD and HC groups were observed in the level of Glx

Table 3 MRS measures as a function of patient subgroups

MRS metabolite	un-medicated OCD (n = 5)	refractory OCD (n = 18)	t(df)	p	severe OCD (n = 16)	moderate OCD (n = 7)	t(df)	p
GABA+	2.43 ± 0.23	2.40 ± 0.66	0.093 (21)	0.927	2.37 ± 0.61	2.48 ± 0.58	0.404 (21)	0.69
Glx	1.93 ± 0.42	2.15 ± 0.51	0.903 (21)	0.377	2.12 ± 0.56	2.06 ± 0.32	0.258 (21)	0.80
GABA+/Glx Ratio	1.31 ± 0.34	1.15 ± 0.29	1.116 (21)	0.277	1.16 ± 0.30	1.22 ± 0.32	0.436 (21)	0.667

ACC anterior cingulate cortex, GABA gamma-aminobutyric acid, Glx glutamate-glutamine, HC healthy control, MRS magnetic resonance spectroscopy, OCD obsessive-compulsive disorder

did not differ significantly in their levels of GABA+ and Glx compared to patients who had a history of medication treatment (Table 3). However, never medicated patients exhibited a significantly larger GABA+/Glx ratio than patients with a history of serotonergic medication treatment.

Correlations of MRS measures with demographic and clinical variables

The MRS measures showed no significant correlations with the demographic and clinical variables under study (Table 4).

Discussion

In this study, patients with OCD showed a higher GABA+ level and a higher GABA+/Glx ratio in the ACC than healthy control participants, but no significant group differences were observed in the level of Glx. The former result supports the hypothesis that GABA abnormalities in the ACC are involved in the pathophysiology of OCD. Furthermore, the higher GABA+/Glx ratio observed in patients seems to confirm our hypothesis that the dynamic interplay between excitatory glutamate and inhibitory GABA neurotransmission is particularly involved. Indeed, according to the obtained effect size estimates, the diagnostic sensitivity of this ratio measure was better than the measure of GABA alone. Finally, the present results fail to support the hypothesis that ACC glutamate abnormalities alone, as indexed by Glx levels, play a significant role in OCD pathophysiology.

Our results are difficult to compare directly to previous studies on GABA levels in patients with OCD because of methodological and patient sample differences. Furthermore, previous MRS studies focused on the prefrontal cortex (PFC), and not on the ACC. For example, Simpson et al. [31] found decreased GABA/W levels in the medial PFC of adult patients with OCD when compared to matched healthy participants. By

comparison, these researchers did not detect group differences in GABA/W levels in the dorsolateral PFC. Other studies have reported that plasma levels of GABA are decreased in patients with OCD [32]. Despite marked study differences, the present results also indicate that GABA abnormalities within the CSTC circuit are linked to OCD pathophysiology. An important goal for further research is to determine whether our finding of increased GABA levels in the ACC of patients with OCD bears a relationship to decreased GABA levels in the medial PFC reported in other studies.

The finding that the patients with OCD did not differ from healthy participants in the level of Glx in the ACC is also in agreement with previous studies [26, 29] and, specifically, with the findings of Brennan et al. [33], who reported the same finding in a patient sample similar to our sample with respect to age, sex, and severity of OCD symptoms. These researchers also question whether glutamate abnormalities in the ACC are fundamental to OCD pathophysiology, but leave room that these abnormalities could play a role in the early course of the disorder [30] or in certain subtypes of OCD. Alternatively, our study results indicate that glutamate abnormalities alone may not be directly involved, but that the interaction of this excitatory neurotransmitter with GABA could well have a significant pathophysiological role to play in OCD.

The results of this study, however, should be qualified because the observed GABA+ levels and GABA+/Glx ratios neither differentiated patients with severe OCD from patients with relatively moderate OCD nor correlated with our continuous variables of clinical symptom severity. Moreover, given the nonexperimental nature of case-control studies, the possibility cannot be completely excluded that the differences in the MRS measures between the patients with OCD and healthy participants stem from factors other than the disease state of interest.

Table 4 Correlations of MRS measures with demographic and clinical variables within the patient group (N = 23)

MRS metabolites	Age	Age of Onset	Y-BOCS	HAMA	HAMD-17
GABA+ r(p)	-0.264 (0.224)	0.307 (0.154)	-0.307 (0.154)	-0.033 (0.881)	0.001 (0.995)
Glx r(p)	-0.144 (0.512)	0.309 (0.151)	0.007 (0.976)	0.01 (0.964)	0.071 (0.746)
GABA+/Glx Ratio r(p)	-0.122 (0.578)	-0.055 (0.805)	-0.267 (0.218)	-0.071 (0.749)	-0.145 (0.509)

GABA gamma-aminobutyric acid, Glx glutamate-glutamine, HAMA Hamilton Anxiety Rating Scale, HAMD-17 17-item Hamilton Depression Rating Scale, OCD obsessive-compulsive disorder

Although both groups were similar to each other with respect to sex and age, and serotonergic medication treatment was associated with decreased, and not with increased, GABA+/Glx ratios, the patients with OCD could have differed from the community volunteers on numerous other variables that potentially have affected the MRS measures but that were not assessed and controlled for in the study. For example, both groups could have differed from one another in cognitive function or socioeconomic background. Moreover, the patients could have differed from the community volunteers on variables that are not directly linked to the pathophysiological process of interest but that are likely to accompany the clinical diagnosis of OCD, such as treatment and hospitalization along with the psychological and psychosocial consequences of having received the formal diagnosis of the psychiatric disorder. In addition, SSRIs may take 1 week till they have a noticeable effect and the effect should also not immediately decay if the patients do not use them for 24 h. We cannot entirely exclude the SSRIs effect in the medicated patients, which is a limitation [34, 35]. The healthy controls were matched for age, gender, but not for education and the small sample size is also a limitation that should be considered in our future studies. Our study results and conclusions, therefore, should be regarded as tentative and preliminary until they have been substantiated by further research.

Conclusions

This MRS study indicates that GABA abnormalities within the ACC contribute to the pathophysiology of OCD. Also, in line with previous MRS studies, the results fail to provide evidence that glutamate abnormalities alone are involved in adult OCD. New tentative evidence is provided, however, that a disruption in the balance between GABA and glutamate neurotransmission has a particularly important role to play in OCD pathophysiology. However, because of study limitations, additional research is required to validate the present observations and interpretations.

Abbreviations

¹H-MRS: proton MRS; ACC: Anterior cingulate cortex; CSF: Cerebrospinal fluid; CSTC: Cortico-striato-thalamo-cortical; DLPFC: Dorsolateral prefrontal cortex; GABA: Gamma-aminobutyric acid; Glx: Glutamate-glutamine; GM: Gray matter; HAMA: Hamilton Anxiety Rating Scale; HAMD-17: 17-item Hamilton Depression Rating Scale; HC: Healthy control; MEGA-PRESS: MEGA-Point Resolved Spectroscopy technique; mPFC: medial prefrontal cortex; MRS: Magnetic resonance spectroscopy; OCD: Obsessive-compulsive disorder; ROI: Region of interest; TE: echo time; TR: repetition time; WM: White matter; Y-BOCS: Yale-Brown Obsessive-Compulsive Scale

Acknowledgements

The authors thank Dr. Odin van der Stelt (Research Consultant, Amsterdam, The Netherlands) for constructive comments on the manuscript.

Authors' contributions

YL and CCZ performed the literature review, participated in data collection, analyzed and interpreted the data and drafted the manuscript. KW participated in data analysis and revised the manuscript. YYZ and WV revised the manuscript. NYH and HYJ participated in conception of the project and data collection. WBC and RAEE provided the MEGA-PRESS protocol. FHY designed the study and critically revised the manuscript. All authors read and approved the final manuscript.

Funding

This work was supported by National Natural Science Foundation of China (81771482), National Institutes of Health (R01EB016089), National Institutes of Health (R01EB023693) and National Institutes of Health (P41EB015909). The funding (81771482) supports the design of the study, data collection, manuscript writing and revision. The funding (R01EB016089, R01EB023693 and P41EB015909) supports the analysis and interpretation of data.

Availability of data and materials

The data that support the findings of this study are available from the corresponding author upon reasonable request.

Ethics approval and consent to participate

The study was approved by the ethics committee of Ruijin Hospital, Shanghai JiaoTong University School of medicine, and the reference number for the ethical approval is "2014–17". All participants provided written informed consent.

Consent for publication

Not applicable.

Competing interests

The authors declare that they have no competing interests.

Author details

¹Department of Radiology, Ruijin Hospital, Shanghai Jiaotong University School of Medicine, Shanghai, China. ²Department of Functional Neurosurgery, Ruijin Hospital Shanghai Jiaotong University School of Medicine, Shanghai, China. ³Department of Psychiatry, University of Cambridge, Cambridge, UK. ⁴Philips Healthcare, Shanghai, China. ⁵Department of Psychiatry, Ruijin Hospital Shanghai Jiaotong University School of Medicine, Shanghai, China. ⁶Department of Radiology and Radiological Science, The Johns Hopkins University School of Medicine, Baltimore, MD, USA.

Received: 23 October 2018 Accepted: 23 May 2019

Published online: 30 May 2019

References

1. American Psychiatric Association. Diagnostic and statistical manual of mental disorders. 2013.
2. Veale D, Miles S, Smallcombe N, Ghezzi H, Goldacre B and Hodsoll J. Atypical antipsychotic augmentation in SSRI treatment refractory obsessive-compulsive disorder: a systematic review and meta-analysis. *BMC Psychiatry*. 2014;14(1):317.
3. Greenberg BD, Rauch SL, Haber SN. Invasive circuitry-based Neurotherapeutics: stereotactic ablation and deep brain stimulation for OCD. *Neuropsychopharmacology*. 2009;35:317–36.
4. Nikolaus S, Antke C, Beu M, Müller H-W. Cortical GABA, striatal dopamine and midbrain serotonin as the key players in compulsive and anxiety disorders - results from in vivo imaging studies. *Rev Neurosci*. 2010;21:119–39.
5. Zuo C, Ma Y, Sun B, Peng S, Zhang H, Eidelberg D, et al. Metabolic imaging of bilateral anterior capsulotomy in refractory obsessive compulsive disorder: an FDG PET study. *J Cereb Blood Flow Metab*. 2013;33:880–7.
6. Dougherty DD, Brennan BP, Stewart SE, Wilhelm S, Widge AS, Rauch SL. Neuroscientifically Informed Formulation and Treatment Planning for Patients With Obsessive-Compulsive Disorder: A Review. *JAMA Psychiatry*. 2018;75:1081–7.
7. Brennan BP, Rauch SL, Jensen JE, Pope HG. A critical review of magnetic resonance spectroscopy studies of obsessive-compulsive disorder. *Biological Psychiatry*. 2013;73:24–31.
8. Rosenberg DR, Mirza Y, Russell A, Tang J, Smith JM, Banerjee SP, et al. Reduced anterior cingulate glutamatergic concentrations in childhood OCD

- and major depression versus healthy controls. *J Am Acad Child Adolesc Psychiatry*. 2004;43:1146–53.
9. Simpson HB, Shungu DC, Bender J, Mao X, Xu X, Slifstein M, et al. Investigation of cortical glutamate-glutamine and γ -aminobutyric acid in obsessive-compulsive disorder by proton magnetic resonance spectroscopy. *Neuropsychopharmacology*. 2012;37:2684–92.
 10. Milad MR, Rauch SL. Obsessive compulsive disorder: beyond segregated Cortico-striatal pathways. *Trends Cogn Sci*. 2012;16:43–51.
 11. Fallon S, Shearman E, Sershen H, Lajtha A. The effects of glutamate and GABA receptor antagonists on nicotine-induced neurotransmitter changes in cognitive areas. *Neurochem Res*. 2007;32:535–53.
 12. Drouet JB, Fauvelle F, Maunoir-Regimbal S, Fidler N, Maury R, Peinnequin A, et al. Differences in prefrontal cortex GABA/glutamate ratio after acute restraint stress in rats are associated with specific behavioral and neurobiological patterns. *Neuroscience*. 2015;285:155–65.
 13. Ford TC, Nibbs R, Crewther DP. Increased glutamate/GABA+ ratio in a shared autistic and schizotypal trait phenotype termed social disorganisation. *Neuroimage Clin*. 2017;16(C):125–31.
 14. Cheng Y, Xu J, Nie B, Luo C, Yang T, Li H, et al. Abnormal resting-state activities and functional connectivities of the anterior and the posterior cortexes in medication-naïve patients with obsessive-compulsive disorder. *PLoS ONE*. 2013;8:e67478.
 15. Rauch SL, Dougherty DD, Malone D, Rezai A, Friehs G, Fischman AJ, et al. A functional neuroimaging investigation of deep brain stimulation in patients with obsessive-compulsive disorder. *J Neurosurg*. 2006;104:558–65.
 16. Goodman WK, Price LH, Rasmussen S a, Mazure C, Fleischmann RL, Hill CL, et al. The Yale-Brown Obsessive Compulsive Scale. *Archives of General Psychiatry*. 1989;46(11):1012.
 17. Goodman WK, Price LH, Rasmussen SA, et al. The Yale-Brown obsessive compulsive scale. II. Validity. *Arch Gen Psychiatry*. 1989;46:1012–6.
 18. Hamilton M. The assessment of anxiety states by rating. *Br J Med Psychol*. 1959;32(1):50–55.
 19. Hamilton M. A rating scale for depression. *J Neurol Neurosurg Psychiatry*. 1960; 23(1):56–62.
 20. Mescher M, Merkle H, Kirsch J, Garwood M, Gruetter R. Simultaneous in vivo spectral editing and water suppression. *Nmr in Biomedicine*. 2015;11(6):266–72.
 21. Edden RA, Puts NA, Harris AD, et al. Gannet: a batch-processing tool for the quantitative analysis of gamma-aminobutyric acid-edited MR spectroscopy spectra. *J Magn Reson Imaging*. 2014;40:1445–52.
 22. Gasparovic C, Song T, Devier D, Bockholt HJ, Caprihan A, Mullins PG, et al. Use of tissue water as a concentration reference for proton spectroscopic imaging. *Magnetic Resonance in Medicine*. 2006;55(6):1219–26.
 23. Lu H, Nagae-Poetscher LM, Golay X, Lin D, Pomper M, Van Zijl PCM. Routine clinical brain MRI sequences for use at 3.0 tesla. *J Magn Reson Imaging*. 2005;22(1):13–22.
 24. Piechnik SK, Evans J, Bary LH, Wise RG, Jezzard P. Functional changes in CSF volume estimated using measurement of water T2 relaxation. *Magn Reson Med*. 2009;61(3):579–86.
 25. Wansapura JP, Holland SK, Dunn RS, Ball WS. NMR relaxation times in the human brain at 3.0 tesla. *J Magn Reson Imaging*. 1999;9(4):531–8.
 26. Edden RAE, Intrapriomkul J, Zhu H, Cheng Y, Barker PB. Measuring T2 in vivo with J-difference editing: application to GABA at 3 tesla. *J Magn Reson Imaging*. 2012;35(1):229–34.
 27. Puts NAJ, Barker PB, Edden RAE. Measuring the longitudinal relaxation time of GABA in vivo at 3 tesla. *J Magn Reson Imaging*. 2013;37(4):999–1003.
 28. Mullins PG, Mcgonigle DJ, Gorman RLO, Puts NAJ, Vidyasagar R, Evans CJ, et al. NeuroImage current practice in the use of MEGA-PRESS spectroscopy for the detection of GABA. *Neuroimage*. 2014;86:43–52.
 29. Friston JA, KJ. Unified segmentation. *Neuroimage*. 2005;26:839–51.
 30. Aufhaus E, Weber-Fahr W, Sack M, Tunc-Skarka N, Oberthuer G, Hoerst M, et al. Absence of changes in GABA concentrations with age and gender in the human anterior cingulate cortex: a MEGA-PRESS study with symmetric editing pulse frequencies for macromolecule suppression. *Magn Reson Med*. 2013;69(2):317–20.
 31. Simpson HB, Shungu DC, Bender J, et al. Investigation of cortical glutamate–glutamine and γ -aminobutyric acid in obsessive–compulsive disorder by proton magnetic resonance spectroscopy. *Neuropsychopharmacology*. 2012;37:2684–92.
 32. Russo AJ, Pietsch SC. Decreased hepatocyte growth factor (HGF) and gamma aminobutyric acid (GABA) in individuals with obsessive-compulsive disorder (OCD). *Biomark Insights*. 2013;8:107–14.
 33. Brennan BP, Rauch SL, Jensen JE, HGP J. A critical review of magnetic resonance spectroscopy studies of obsessive-compulsive disorder. *BPS*. 2013;73:24–31.
 34. Taylor M, Murphy SE, Selvaraj S, Wylezinska M, Jezzard P, Cowen PJ, et al. Differential effects of citalopram and reboxetine on cortical Glx measured with proton MR spectroscopy. *J Psychopharmacol*. 2008;22:473–6.
 35. Bhagwagar Z, Wylezinska M, Taylor M, Jezzard P, Matthews PM, Cowen PJ. Increased brain GABA concentrations following acute administration of a selective serotonin reuptake inhibitor. *Am J Psychiatr*. 2004;161(2):368–70.

Publisher's Note

Springer Nature remains neutral with regard to jurisdictional claims in published maps and institutional affiliations.

Ready to submit your research? Choose BMC and benefit from:

- fast, convenient online submission
- thorough peer review by experienced researchers in your field
- rapid publication on acceptance
- support for research data, including large and complex data types
- gold Open Access which fosters wider collaboration and increased citations
- maximum visibility for your research: over 100M website views per year

At BMC, research is always in progress.

Learn more biomedcentral.com/submissions

