

Identification of novel epithelial ovarian cancer loci in Women of African Ancestry

Ani Manichaikul,^{1,2} Lauren C. Peres,^{2,3} Xin-Qun Wang,² Mollie E. Barnard,⁴ Deanna Chyn,² Xin Sheng,⁵ Zhaohui Du,⁵ Jonathan Tyrer,⁶ Joseph Dennis,⁶ Ann G. Schwartz,⁷ Michele L. Cote,⁷ Edward Peters,⁸ Patricia G. Moorman,⁹ Melissa Bondy,¹⁰ Jill S. Barnholtz-Sloan,¹¹ Paul Terry,¹² Anthony J. Alberg,¹³ Elisa V. Bandera,¹⁴ Ellen Funkhouser,¹⁵ Anna H. Wu,⁵ Celeste Leigh Pearce,^{16,17} Malcom Pike,^{17,18} Veronica Wendy Setiawan,⁵ Christopher A. Haiman,⁵ the African American Breast Cancer Consortium (AABC), the African Ancestry Prostate Cancer Consortium (AAPC), Julie R. Palmer,¹⁹ Loic LeMarchand,²⁰ Lynne R. Wilkens,²⁰ Andrew Berchuck,²¹ Jennifer A. Doherty,⁴ Francesmary Modugno,^{22,23,24} Roberta Ness,²⁵ Kirsten Moysich,²⁶ Beth Y. Karlan,²⁷ Alice S. Whittemore,^{28,29} Valerie McGuire,²⁹ Weiva Sieh,^{30,31} Kate Lawrenson,³² Simon Gayther,³³ Thomas A. Sellers,³ Paul Pharoah,⁶ Joellen M. Schildkraut,² on behalf of the African American Cancer Epidemiology Study (AACES) and the Ovarian Cancer Association Consortium (OCAC)

¹Center for Public Health Genomics, University of Virginia, Charlottesville, VA, USA

²Department of Public Health Sciences, University of Virginia, Charlottesville, VA, USA

³Department of Cancer Epidemiology, H. Lee Moffitt Cancer Center and Research Institute, Tampa, FL, USA.

⁴Huntsman Cancer Institute, Department of Population Health Sciences, University of Utah, Salt Lake City, UT, USA

⁵Department of Preventive Medicine, Keck School of Medicine of USC, Los Angeles, CA, USA

⁶Strangeways Research Laboratory, University of Cambridge, 2 Worts' Causeway, Cambridge CB1 8RN, UK

⁷Karmanos Cancer Institute, Wayne State University School of Medicine, Detroit, MI, USA

⁸Epidemiology Program, Louisiana State University Health Sciences Center School of Public Health, New Orleans, Louisiana, USA

⁹Department of Community and Family Medicine, Duke University Medical Center, Durham, NC, USA

¹⁰Cancer Prevention and Population Sciences Program, Baylor College of Medicine, Houston, Texas, USA

¹¹Department of Population and Quantitative Health Sciences and Case Comprehensive Cancer Center, Case Western Reserve University School of Medicine, Cleveland, OH, USA

¹²Department of Medicine, University of Tennessee Medical Center – Knoxville, Knoxville, Tennessee, USA

¹³Department of Epidemiology and Biostatistics, Arnold School of Public Health, University of South Carolina, Columbia, SC, USA

¹⁴Department of Population Science, Rutgers Cancer Institute of New Jersey, New Brunswick, New Jersey, USA

¹⁵Division of Preventive Medicine, University of Alabama at Birmingham, Birmingham, Alabama, USA

¹⁶Department of Epidemiology, University of Michigan School of Public Health, Ann Arbor, Michigan, USA

¹⁷Department of Preventive Medicine, Keck School of Medicine, University of Southern California Norris Comprehensive Cancer Center, Los Angeles, California, USA

¹⁸Department of Epidemiology and Biostatistics, Memorial Sloan Kettering Cancer Center, New York, USA

¹⁹Slone Epidemiology Center at Boston University, Boston, Massachusetts, USA

²⁰University of Hawaii Cancer Center, Honolulu, Hawaii, USA

²¹Division of Gynecologic Oncology, Department of Obstetrics and Gynecology, Duke University Medical Center, Durham, NC, USA

²²Division of Gynecologic Oncology, Department of Obstetrics, Gynecology and Reproductive Sciences, University of Pittsburgh School of Medicine, Pittsburgh, Pennsylvania, USA

²³Department of Epidemiology, University of Pittsburgh Graduate School of Public Health, Pittsburgh, Pennsylvania, USA

²⁴Ovarian Cancer Center of Excellence, Womens Cancer Research Program, Magee-Womens Research Institute and University of Pittsburgh Cancer Institute, Pittsburgh, Pennsylvania, USA

²⁵The University of Texas School of Public Health, Houston, Texas, USA

²⁶Department of Cancer Prevention and Control, Roswell Park Cancer Institute, Buffalo, NY, USA

²⁷Department of Obstetrics and Gynecology, Ronald Regan UCLA Medical Center, Los Angeles, California, USA

²⁸Department of Health Research and Policy, Stanford University School of Medicine, Stanford, California, USA

²⁹Department of Biomedical Data Science, Stanford University School of Medicine, Stanford, California, USA

³⁰Department of Population Health Science and Policy, Icahn School of Medicine at Mount Sinai, New York, New York, USA

³¹Department of Genetics and Genomic Sciences, Icahn School of Medicine at Mount Sinai, New York, New York, USA

³²Department of Biomedical Sciences, Cedars-Sinai Medical Center, Los Angeles, California, USA

³³Center for Bioinformatics and Functional Genomics and the Cedars-Sinai Genomics Core, Cedars-Sinai Medical Center, Los Angeles, California, USA

SHORT TITLE: Ovarian cancer GWAS among women of African Ancestry

FINANCIAL DISCLOSURE: Patricia Moorman has received compensation for work related to litigation in regard to talc and ovarian cancer.

CORRESPONDING AUTHOR: Joellen M. Schildkraut, University of Virginia, PO Box 800765, Charlottesville, VA 22903, Telephone: (434)924-8569, Fax: (434)297-6485, Email: jms2yf@virginia.edu

KEYWORDS: ovarian cancer, African ancestry, genome wide association study, gene expression, eQTLs

ABBREVIATIONS: epithelial ovarian cancer (EOC), high-grade serous ovarian carcinomas (HGSOC), genome-wide association studies (GWAS), single nucleotide polymorphism (SNP), The Genetic Associations and Mechanisms in Oncology (GAME-ON) network, Ovarian Cancer Association Consortium (OCAC), Collaborative Oncological Gene-environment Study (COGS), expression quantitative trait locus (eQTL), quality control (QC), Center for Inherited Disease Research (CIDR), National Cancer Institute (NCI), heterozygosity count (HC), effective heterozygosity count (effHC), Bayesian false-discovery probabilities (BFDPs), formalin-

fixed paraffin-embedded (FFPE), North Carolina Ovarian Cancer Study (NCOCS), deoxyribonucleic acid (DNA), ribonucleic acid (RNA), robust multi-array average (RMA), African American Breast Cancer Consortium (AABC), African American Prostate Cancer Consortium (AAPC), effect allele frequency (EAF), *FST* (Follistatin), confidence interval (CI), polycystic ovary syndrome (PCOS), melanoma-associated antigen (MAGEs), non-coding RNA (ncRNA), the Black Women's Health Study (BWHS), the Women's Health Initiative (WHI), and the Southern Community Cohort Study (SCCS)

ARTICLE CATEGORY: Cancer Epidemiology - Research Article

NOVELTY AND IMPACT: In this first GWAS of epithelial ovarian cancer in women of African Ancestry to date, we report ten novel associated SNPs. Our results also provide evidence of variants for ovarian cancer that are shared among women of European and African Ancestry.

ABSTRACT

Women of African Ancestry have lower incidence of epithelial ovarian cancer (EOC) yet worse survival compared to women of European Ancestry. We conducted a genome-wide association study (GWAS) in African ancestry women with 755 EOC cases, including 537 high-grade serous ovarian carcinomas (HGSOC), and 1,235 controls. We identified four novel loci with suggestive evidence of association with EOC ($P < 1 \times 10^{-6}$), including rs4525119 (intronic to *AKR1C3*), rs7643459 (intronic to *LOC101927394*), rs4286604 (12 kb 3' of *UGT2A2*), and rs142091544 (5 kb 5' of *WWC1*). For HGSOC, we identified six loci with suggestive evidence of association including rs37792 (132 kb 5' of *FST*), rs57403204 (81 kb 3' of *MAGEC1*), rs79079890 (*LOC105376360* intronic), rs66459581 (5 kb 5' of *PRPSAP1*), rs116046250 (*GABRG3* intronic), and rs192876988 (32 kb 3' of *GK2*). Among the identified variants, two are near genes known to regulate hormones and diseases of the ovary (*AKR1C3* and *FST*), and two are linked to cancer (*AKR1C3* and *MAGEC1*). In follow-up studies of the 10 identified variants, the *GK2* region SNP, rs192876988, showed an inverse association with EOC in European ancestry women ($P=0.002$), increased risk of ER positive breast cancer in African ancestry women ($P=0.027$), and decreased expression of *GK2* in HGSOC tissue from African ancestry women ($P=0.004$). A European ancestry-derived polygenic risk score showed positive associations with EOC and HGSOC in women of African ancestry suggesting shared genetic architecture. Our investigation presents evidence of variants for EOC shared among European and African ancestry women and identifies novel EOC risk loci in women of African ancestry.

INTRODUCTION

Epithelial ovarian cancer (EOC) is a rare but deadly disease that has a slightly higher incidence in women of European ancestry compared to women of African ancestry.¹ However, in the United States, the five-year relative survival is much worse for African-American women at 35% compared to 47% for European ancestry women.¹ To date, genome-wide association studies (GWAS) have identified 30 common, low penetrant EOC susceptibility alleles² but due to small sample sizes of other ethnic and racial groups, most published GWAS studies of EOC have been restricted to European ancestry women. There have been no GWAS in women of African ancestry. Although there are 30 confirmed GWAS SNPs that have been reported in European ancestry women, it is unknown whether there is any concordance among women of African descent.

The Genetic Associations and Mechanisms in Oncology (GAME-ON) network designed a custom Illumina array, the OncoArray, in order to replicate previous GWAS findings and identify new cancer susceptibility loci.³ The OncoArray includes ~533,000 variants (of which 260,660 formed a GWAS backbone) and was used for coordinated genotyping of over 400,000 cancer cases and controls, including EOC case-control studies of the Ovarian Cancer Association Consortium (OCAC) and the multi-center African-American Cancer Epidemiology Study (AACES).⁴ The present study conducted a GWAS in 755 EOC cases and 1,235 controls of African ancestry from the OCAC and AACES. To increase the sample size, additional genotype data were combined from the OCAC Collaborative Oncological Gene-environment Study (COGS) and three EOC GWAS⁵ to evaluate the concordance of confirmed GWAS SNPs found in women of European ancestry. We present the results of these association analyses together with expression quantitative trait locus (eQTL) analyses for SNPs reaching a suggestive threshold of $P < 1 \times 10^{-6}$. The functional annotation of the EOC susceptibility loci in women of African Ancestry is described.

MATERIALS AND METHODS

Study samples

All subjects included in this analysis were of African descent and provided written informed consent as well as data and blood samples under ethics committee-approved protocols.

The GAME-ON OncoArray data set comprised 63 OCAC studies and the AACES.⁴ The analyses for this study were restricted to 32 studies that contributed samples from individuals of African descent (**Supplementary Table 1**).

Genotype data and Quality Control (QC)

Genotyping was performed at five genotyping centers: University of Cambridge, Center for Inherited Disease Research (CIDR), National Cancer Institute (NCI), Genome Quebec and Mayo Clinic. OncoArray sample QC for the genotypes received from Cambridge was similar to that carried out for the other projects that used the OncoArray as described in Pharoah et al. 2013.³ Samples were excluded if the genotyping call rate was < 95%, for high or low heterozygosity, if the individual was not female or had ambiguous sex, or were duplicates. SNP QC was carried out according to the OncoArray QC guidelines.³ Sample level QC included restriction to female samples, as well as check for call rate > 95%, heterozygosity (either too big or too small), removal of ineligible samples, and relationship inference to check for unexpected first-degree relatives. SNP level QC included filter on call rate > 95% and Hardy-Weinberg Equilibrium p-value > 1×10^{-5} . After applying these filters for QC, there were 466,142 SNPs remaining for 2,088 samples (832 EOC cases and 1,255 controls).

Genetic ancestry analysis

Intercontinental ancestry was calculated for the OCAC and AACES samples using the software package FastPop⁶ (<http://sourceforge.net/projects/fastpop/>) that was developed specifically for the OncoArray Consortium. Only the African ancestry samples, defined as having >50% African ancestry, were used for the GWAS reported here (755 EOC cases and 1235 controls). Among the cases, 537 were high-grade serous ovarian carcinoma (HGSOC), 21 low-grade serous, 31 endometrioid, 24 clear cell, 51 mucinous 12 mixed cell, 65 other EOC, and 14 with missing histotype. Principal components computed using FastPop⁶ were further used to adjust for population structure in our GWAS.

Genome-wide Imputation of genotypes

Using the genotyped SNPs that passed quality control, haplotypes were phased with SHAPEIT v2⁷ followed by imputation to the 1,000 Genomes Phase 3 v5 reference set⁸ using Minimac3.⁹

Association analyses in ovarian cancer cases and controls of African descent

Genome-wide association analysis was performed by logistic regression with adjustment for two principal components of ancestry using a score test to account for genotype uncertainty as implemented in SNPTTESTv2.5.2.¹⁰ For genotyped SNPs, we included results only for those SNPs with Hardy-Weinberg Equilibrium p-value $> 1 \times 10^{-5}$ and heterozygosity count (HC) > 30 , where HC is defined as $N \times \text{MAF} \times (1 - \text{MAF})$ for each SNP, N represents the sample size (either the number of cases or the number of controls), and MAF represents the SNP minor allele frequency. For imputed SNPs, we included those SNPs with imputation R-squared > 0.5 , and effective heterozygosity count (effHC) > 30 , where effHC is defined as the imputation R-squared \times HC. Note that we applied quality control filters separately for cases and controls to select SNPs carried forward for genetic association analysis, such that a minimum HC (or effective HC) of 30 was observed among each of the case and control groups. After applying these filters, there were 12,486,624 and 11,083,029 SNPs remaining in the GWAS of EOC and HGSOC, respectively. We examined quantile-quantile plots for the SNPs remaining after applying filters (**Supplementary Figure 1**), and obtained lambdas of 1.01 in both the EOC and HGSOC analyses, indicating that our analyses were free from obvious inflation in the distribution of observed p-values. We calculated Bayesian false-discovery probabilities (BFDPs) for associated SNPs assuming prior probabilities of association 1:1,000 and 1:10,000 to facilitate interpretation of the reported SNP associations.¹¹

Expression quantitative trait locus (eQTL) analysis for selected GWAS SNPs

We pursued eQTL analysis using gene expression measurements from formalin-fixed paraffin-embedded (FFPE) tissue specimens collected from the facility where the cytoreductive surgery was performed for 260 African ancestry HGSOC cases in the AACES and a case-control study in OCAC, the North Carolina Ovarian Cancer Study (NCOCS). RNA was extracted using the Qiagen AllPrep DNA/RNA FFPE isolation reagents in

conjunction with the Qiagen GeneRead kit, and RNA was assayed on Affymetrix Human Transcriptome 2.0 ST GeneChips. R (version 3.5.2) Bioconductor (version 3.8) was used to quantitate expression levels for targeted genes. We used robust multi-array average (RMA) from the oligo package (target="core") to normalize the expression intensities¹² and ComBat (Bioconductor-sva) to remove batch effects.¹³ We then mapped probe intensity measurements to gene identifiers¹⁴ before generating box plots of expression distributions by genotype. For each of the ten SNPs identified in the GWAS of EOC and HGSOE (**Table 1**), we examined genes and transcripts within the region of identified GWAS SNPs for eQTL evidence using an additive model with adjustment for age and the first two principal components of ancestry. For the selected transcripts, we report all eQTL associations demonstrating nominal statistical significance at $P < 0.05$ for available transcripts falling within the region of identified GWAS SNPs.

Examination of pleiotropy of GWAS SNPs associated with EOC in women of African Ancestry with breast and prostate cancer in African ancestry individuals

Because we were unable to identify other GWAS of EOC in women of African ancestry, independent validation of GWAS results was not possible. Therefore, we examined the association of the ten SNPs identified in the present African ancestry GWAS of EOC or HGSOE at $P < 1 \times 10^{-6}$ (**Table 1**) with previously completed studies of breast cancer (overall, ER positive and ER negative) and prostate cancer in populations of African descent. Genetic associations in breast cancer were determined from 3,007 cases, of which 987 are ER negative and 1,518 are ER positive, and 2,720 African ancestry controls from the African American Breast Cancer Consortium (AABC), using the Illumina Human 1M-Duo BeadChip.¹⁵ The genotype associations for prostate cancer were from 4,853 cases and 4,678 controls in the African American Prostate Cancer Consortium (AAPC), using the Illumina Infinium 1M-Duo.¹⁶ For the selected SNPs, evidence of association from the studies of breast and prostate cancer is reported at a nominal level ($P < 0.05$) without adjustment for multiple comparisons.

Concordance of associated SNPs across women of African and European ancestry

We examined whether susceptibility genes for EOC previously identified in European ancestry women² were associated with EOC among women of African ancestry as well as whether the loci identified among women of African ancestry in this analysis were associated with EOC among European ancestry women.

Fine mapping of gene regions was performed for (1) the loci previously identified as significantly associated with EOC in European ancestry women among African ancestry women and (2) the loci identified as significantly associated with EOC in those of African Ancestry in the present analysis among European ancestry women. Plots were generated for each region defined by the position of the most strongly associated SNP +/- 400 kb using the LocusZoom software with the hg19/1000 Genomes Nov 2014 AFR (or EUR depending on the ethnic population) as the reference panel for linkage disequilibrium information. Significance for each region of interest was defined by both a Bonferroni threshold (alpha-level of 0.05/number of SNPs tested in that region) and a more conservative, suggestive threshold (alpha-level of 0.05/(number of SNPs tested in that region/3)). To further examine the global genetic architecture in the two populations, we calculated a polygenic risk score using 24 SNPs from published GWAS of ovarian cancer in European ancestry women, excluding SNPs associated only with mucinous tumors.^{3,17}

Data Availability

GWAS data that support the findings of this study will be openly available in dbGaP, URL and accession number are still to be determined. Other portions are not publicly available due to privacy or ethical restrictions.

RESULTS

Genome-wide association of EOC and HGSOC in African ancestry women

Genetic association analyses were performed using genotype data from 755 invasive EOC cases (537 HGSOC) and 1,235 controls of African ancestry from OCAC and AACES. The numbers of participants by study for OCAC are shown in **Supplementary Table 1**. The Manhattan plots from the GWAS in African ancestry women for both overall EOC and HGSOC are shown in **Supplementary Figure 2**. We did not observe any genetic markers that

were statistically significantly associated with EOC or HGSOC risk at the standard genome-wide significance level of $P < 5 \times 10^{-8}$.

Using a suggestive threshold of $P < 1 \times 10^{-6}$, we identified four distinct loci for association with EOC and six distinct loci for HGSOC (**Table 1**). The four loci associated with EOC included 10p15.1 (lead SNP rs4525119, intronic to *AKR1C3*, $P = 4.9 \times 10^{-7}$, effect allele frequency [EAF]=0.33), 3p25.3 (lead SNP rs7643459, intronic to *LOC101927394*, $P = 8.4 \times 10^{-7}$, EAF=0.36), 4q13.3 (lead SNP rs4286604, 12 kb 3' of *UGT2A2* $P = 8.5 \times 10^{-7}$, EAF=0.27), and 5q34 (lead SNP rs142091544, 5 kb 5' of *WWC1*, $P = 9.4 \times 10^{-7}$, EAF=0.03). Of these four loci, none reached the threshold of $P < 1 \times 10^{-6}$ for HGSOC, although a p-value of 1.4×10^{-6} , just below this threshold, was found for rs764359 (OR=1.45; 95% CI: 1.25-1.68). The six loci associated with HGSOC included 5q11.2 (lead SNP rs37792, 132 kb 5' of *FST* (Follistatin), $P = 6.0 \times 10^{-8}$, EAF=0.34), Xq27.2 (lead SNP rs57403204, 81 kb 3' of *MAGEC1*, $P = 1.7 \times 10^{-7}$, EAF=0.06), 10p15.1 (lead SNP rs79079890, *LOC105376360* intronic, $P = 3.0 \times 10^{-7}$, EAF=0.03), 17p25.1 (lead SNP rs66459581, 5 kb 5' of *PRPSAP1*, $P = 5.1 \times 10^{-7}$, EAF=0.23), 15p12 (lead SNP rs116046250, *GABRG3* intronic, $P = 8.7 \times 10^{-7}$, EAF=0.05), and 4q21.21 (lead SNP rs192876988, 32 kb 3' of *GK2*, $P = 9.2 \times 10^{-7}$, EAF=0.05). The regional association plots for these ten SNPs are shown in **Supplementary Figure 3** (EOC) and **Supplementary Figure 4** (HGSOC). For the four loci associated with EOC overall, the BFDP ranged from 5% to 8% assuming a prior of 1:1,000 (**Table 1**) For the six loci associated with HGSOC the BFDP ranged from <1%-8% assuming a prior of 1:1,000 (**Table 1**). Assuming a prior probability of 1:10,000, we identified one locus for HGSOC with a BFDP <5% (*FST* rs37792, BFDP=4%; **Supplementary Table 2**).

Expression quantitative trait locus (eQTL) analysis for GWAS SNPs

Results of eQTL analyses on 260 HGSOC tissue samples from women of African ancestry for each of the ten EOC- and HGSOC-associated regions of interest are in **Figure 1**. We identified the set of genes lying within a +/- 100kb region of the most strongly associated SNP for each locus to pursue for the eQTL analysis. For one SNP, rs37792, there were no genes or transcripts identified within a +/- 100 kb region, so we expanded consideration to a +/- 500 kb region that included *FST* and three other genes (**Supplementary Table 3**). Among the gene and transcript targets selected for follow-up, expression data were available for 21 genes and

transcripts falling within the regions of seven GWAS SNPs. We note that we did not have expression data available for the non-coding transcripts identified within the regions of two SNPs (rs7643459 and rs79079890), so these SNPs and transcripts could not be carried forward for eQTL analysis. Among the SNPs and transcripts examined in eQTL analyses, we identified a significant association for rs192876988, where carriers of allele C showed decreased expression of *GK2* ($P=0.004$, **Figure 1 and Supplementary Figure 5**). We also identified a nominally significant association for rs37792 ($P=0.03$).

Breast and prostate cancer associations for selected SNPs identified in the GWAS of EOC and HGSO

As evidence for pleiotropy has been observed in Europeans,² we evaluated pleiotropy with ovarian cancer associated SNPs among African Americans diagnosed with breast and prostate cancer in the AABC and AAPC, respectively. For selected SNPs from the GWAS of EOC and HGSO in African ancestry women (**Table 1**), we examined evidence of association with breast and prostate cancer in individuals of African ancestry. The EOC-associated *LOC101927394* region SNP rs7643459 allele T demonstrated nominal evidence of association with increased risk of ER negative breast cancer ($P=0.029$) with an OR of 1.13 (95% CI 1.01, 1.26) (**Supplementary Table 4**) showing consistent direction with that reported for EOC. The same SNP rs7643459 allele T also showed nominal association with prostate cancer in African Americans ($P=0.034$; **Supplementary Table 5**). Within the region of *UGT2A2*, SNP rs4286604 allele A was associated with increased risk of prostate cancer ($P=0.025$). We note that the A allele for this SNP was identified as having a protective association for EOC (**Table 1**), indicating a discordant direction of association comparing the relationship with EOC versus prostate cancer. SNP rs142091544 allele T within the *WWC1* region, associated with EOC, demonstrated evidence of association with ER negative breast cancer (OR=1.55, 95% CI=1.19, 2.02; $P=0.001$) indicating a consistent direction compared to the association with EOC. The *LOC105377300 / GK2* region SNP rs192876988 allele C demonstrated nominal association with increased risk of ER positive breast cancer (OR=1.32, 95% CI=1.03, 1.69; $P=0.027$; **Supplementary Table 4**), showing a consistent direction of effect with that reported for HGSO (**Table 1**).

Concordance of associated SNPs across women of African and European ancestry

One of the ten SNPs (*LOC105377300* / *GK2* region SNP rs192876988) identified to be associated in women of African ancestry was found to be significantly associated ($P=0.002$) with HGSOC at the Bonferroni threshold among European ancestry women, although the direction of the association was discordant with that among African ancestry women (**Table 1**). Of the 30 previously identified GWAS SNPs detected in European ancestry women, four SNPs were significantly associated with EOC among African ancestry women ($P<0.05$):

19p13.11 (rs4808075, $P=0.013$), 5p15.33 (rs7705526, $P=0.014$), 17q21.32 (rs1879586, $P=0.018$), and 17q12 (rs7405776, $P=0.026$) (**Table 2**). Combining the 24 published European ancestry GWAS SNP associations (omitting mucinous associated SNPs due to the small number of cases in the dataset), the association of the resulting polygenic risk score with EOC was 1.20 per standard deviation in polygenic risk score (95% CI = 1.09, 1.31, $P=4.46\times 10^{-9}$) and 1.26 per standard deviation in polygenic risk score (95% CI: 1.13, 1.39, $P=3.02\times 10^{-11}$) for HGSOC, demonstrating a positive association of this European ancestry-derived risk score with EOC risk in women of African ancestry. These are weaker in comparison to the recently reported polygenic risk score for East Asian women of 1.76 per standard deviation for HGSOC ($P=8.6\times 10^{-6}$).¹⁸

The results from fine mapping of the gene regions of the thirty previously identified SNPs³ associated with EOC and HGSOC in European ancestry women among the sample of African ancestry women identified one risk region in African ancestry women that was significantly associated with EOC after Bonferroni correction, 18q11.2 ($P=1.84\times 10^{-5}$) (**Table 3 and Supplementary Table 6**). The lead SNP in that region (chr18:21555816, rs1258109, 8 kb 5' of *LOC105372023*) is located ~150 kb from the *LAMA3* region variant previously reported in European ancestry (chr18:21405553, rs8098244). Notably, rs8098244 demonstrates differences in MAF across race/ethnic groups with MAFs of 0.28 and 0.03 in the 1000 Genomes European versus African ancestry populations (source: HaploReg v4.1), respectively, corresponding to markedly reduced power to detect associations with this variant in African ancestry women. Four loci were associated with EOC at a suggestive threshold: 9p22.2 (chr9:16978052, rs373094273, $P=2.67\times 10^{-5}$, 36 kb 5' of *LOC105375983*), 8q21.13 (chr8:82866267, rs1839897, $P=1.44\times 10^{-5}$, 104 kb 3' of *LOC105375928*), 10q24.33 (chr10:105375295, rs138417137, $P=3.40\times 10^{-5}$, *SH3PXD2A* intronic), and 3q22.3 (chr3:138839642, rs75623154, $P=3.34\times 10^{-5}$,

BPESC1 intronic). In examination of association with HGSOC, we identified one Bonferroni-significant association at 8q21.13 (chr8:82866267, rs1839897, $P=3.98 \times 10^{-6}$, 104 kb 3' of *LOC105375928*) located ~200 kb from the previously reported *CHMP4C* region variant (chr8:82668818, rs76837345). Additionally, a locus in region 12q24.31 reached the suggestive threshold (chr12:121113096, rs111546208, *CABP1* intronic, $P=2.51 \times 10^{-5}$) for association with HGSOC among African ancestry women.

Of the ten SNPs newly identified in GWAS of African ancestry women, one, the *GK2* region SNP rs192876988, showed evidence a protective association ($P=0.002$) in the OCAC European ancestry GWAS that included up to 23,543 EOC cases and 29,444 controls (**Table 1**). Fine mapping of these gene regions in European ancestry women provided no evidence of another SNP within the region associated with EOC or HGSOC at the Bonferroni significance threshold; however, a SNP in the 4p13 region reached statistical significance at the suggestive threshold, $P=1.14 \times 10^{-5}$ (**Supplementary Table 7**). The lead SNP in this region was rs2292092 (chr4:70592790), a variant in the 3' UTR of the *SULT1B1* gene.

DISCUSSION

Here, we report on the first GWAS of EOC and HGSOC in women of African ancestry. Due to the limited number of EOC cases of African ancestry available for this study, we applied a suggestive threshold of $P < 1 \times 10^{-6}$ for the current investigation. At this suggestive level of statistical significance, we identified four loci associated with EOC in women of African descent and six distinct and novel loci associated with HGSOC in women of African descent. Although one SNP was observed to be associated with HGSOC among European ancestry women, the direction of the association was not concordant with that of African ancestry women. Below we review the functional relevance of these genes to ovarian cancer and other cancers.

The variant with the smallest p-value associated with EOC in women of African descent (rs4525119) is in an intron of *AKR1C3*, a gene which encodes an enzyme of the aldo-keto reductase superfamily.¹⁹ *AKR1C3* plays a role in androgen biosynthesis²⁰ and has been linked to benign gynecologic conditions, endometriosis and polycystic ovary syndrome (PCOS)²¹⁻²⁴, which are risk factors for ovarian cancer. Consistent with a possible relationship with a predisposition to endometriosis, an OR of 1.78 (95% CI = 1.09-2.90) for the association

between a history of endometriosis and invasive EOC risk among African Americans was recently reported in the AACES.²⁵ Another locus associated with EOC is near the *WWC1* gene, which encodes the WW domain-containing protein 1 (*WWC1*), also known as KIBRA, and is likely a regulator of the tumor suppressive Hippo signaling pathway.²⁶ While *WWC1* has been primarily linked to episodic memory and Alzheimer's disease,^{27–30} a recent candidate gene study³¹ observed an association between *WWC1* variants and risk of estrogen-receptor positive breast cancer in women of African ancestry. Likewise, *WWC1/KIBRA* has been linked to breast cancer outcomes, including recurrence-free survival and metastasis.^{32,33} In the current study, we found an association with ER negative breast cancer for the SNP nearest to the *WWC1* gene. To our knowledge, the other two loci associated with EOC in women of African descent at the suggestive threshold, *LOC101927394* and *UGT2A2*, have not been reported in association with cancer or other diseases. However, when we assessed whether the rs7643459 allele T in *LOC101927394* was associated with cancer in individuals of African descent using data from the AABC and AAPC consortium, we demonstrated a nominal association with risk of ER negative breast cancer and prostate cancer in African ancestry individuals.

The variant with the smallest p-value for HGSOC was observed for a SNP upstream of *FST* (rs37792). The *FST* gene encodes a gonadal protein that inhibits the release of follicle-stimulating hormone³⁴, and is consistent with the suspected hormonal etiology of ovarian cancer.³⁵ Polymorphisms of *FST* have been linked to PCOS³⁶ or markers for PCOS³⁷, a risk factor for ovarian cancer.³⁸ With potential importance to cancer risk, progression and survival, the second most significant HGSOC-associated gene, *MAGEC1*, is a member of the melanoma-associated antigen (MAGEs) gene family and encodes tumor-specific antigens that can be recognized by autologous cytolytic T-lymphocytes.³⁹ Due to these properties, the MAGE gene family have garnered attention as possible targets for cancer immunotherapy.⁴⁰ *MAGEC1* expression has been linked to an improved ovarian cancer progression-free survival.⁴¹ Recently, a missense variant in *MAGEC3* was reported to have an X-linked pattern of inheritance in ovarian cancer families.⁴²

Several of the SNPs associated with EOC and HGSOC were long non-coding RNA (ncRNA) genes, *LOC101927394*, *LOC105376360*, and *LOC105377300 (GK2)*. Little is known about these specific ncRNAs, but ncRNAs are increasingly reported by GWAS studies and are thought to play important roles in gene regulation.⁴³ SNPs in long ncRNAs have been shown to contribute to the development of ovarian cancer, where a variant within the exonic region of a long ncRNA gene (rs17427875, *HOXA11-AS*) was marginally associated with reduced risk of serous ovarian cancer.⁴⁴ We also demonstrated that *LOC105377300 / GK2* region SNP rs192876988 allele C was associated with an increased risk of ER positive breast cancer in African ancestry women from AABC, and inversely associated with HGSOC in European ancestry women from OCAC. The rs192876988 allele C also showed association with reduced expression of *GK2* in HGSOC tissue samples from women of African ancestry. *GK2* encodes glycerol kinase 2, a key enzyme in the regulation of glycerol uptake and metabolism, and has been associated with glycerol kinase deficiency.⁴⁵ It remains unclear whether the association between rs192876988 and *GK2* expression is mediated by the nearby ncRNA.

A few SNPs were identified through fine mapping of loci previously reported in European ancestry-based GWAS of ovarian cancer³ that may be of importance to ovarian cancer risk among African ancestry women. Four of these SNPs were near or in long ncRNA genes (*LOC105372023*, *LOC105375983*, *LOC105375928*, and *BPESC1*), while two SNPs lie in protein coding sequences for *SH3PXD2A* and *CABP1*. The *SH3PXD2A* gene encodes an adaptor protein involved in formation of invadopodia and degradation of the extracellular matrix, which both contribute to tumor invasion.⁴⁶ The *CABP1* gene encodes a calcium binding protein that is highly expressed in the brain and retina, and is important in calcium mediated cellular signal transduction.⁴⁷ Through the fine mapping of gene regions among European ancestry women, we identified one SNP in the 3' UTR region of the *SULT1B1* gene. The *SULT1B1* gene encodes a sulfotransferase enzyme that catalyzes the sulfate conjugation of estradiol, thyroid hormones, and drugs.⁴⁸ Overall, although we identified limited statistical significance in examining the specific genetic variants previously reported in GWAS of European ancestry individuals, our fine mapping effort underscores the possibility of shared genes, pathways and biological mechanisms underlying risk of ovarian cancer in European and African ancestry women.

The OCAC and AACES provided a unique opportunity to evaluate genetic associations in African ancestry women with EOC as no individual study alone has enrolled enough subjects. That said, even with data pooled from 32 individual studies, the sample size was underpowered for detection of genome-wide significant associations. As shown in Table 2, power to detect associations of SNPs confirmed among European ancestry in those of African ancestry was limited for most SNPs and ranged from 0.015/0.16 to 0.819/0.982 (based on power calculations with/without consideration for multiple comparisons).

There are very few existing studies that were not included in our analysis that have enrolled women of African descent with ovarian cancer. However, the Black Women's Health Study (BWHS), the Women's Health Initiative (WHI), and the Southern Community Cohort Study (SCCS) have EOC cases diagnosed in women of African descent that were not included in our analyses. Since none of these three studies has participated in OCAC or GAME-ON, genotype data generated from the OncoArray project were not available. Thus far, neither the SCCS nor the BWHS have genotyped ovarian cancers in their cohorts. Although the WHI has conducted genome-wide genotyping, a different genetic platform (Affymetrix 6.0 array) was used. When we attempted to add a small number of cases and many African ancestry controls from WHI, there were systematic differences in allele frequencies observed across the two platforms that precluded merging WHI samples with our OCAC and AACES samples without introducing false positives.⁴⁹ Due to lack of available GWAS efforts for ovarian cancer in African ancestry women, we were unable to pursue formal replication of our selected GWAS SNPs. Although we successfully identified some signals of association for our identified SNPs in examination of independent samples of African ancestry from case-control studies of breast and prostate cancers, we emphasize that these efforts only allowed us to identify SNPs with shared effects across cancer types, without the ability to confirm any SNPs that have mechanisms specific to ovarian cancer. These observations underscore the need for new genotyping initiatives and new data collection that target minority populations with ovarian cancer. Our study included a GWAS backbone in the OncoArray that was designed for women of European ancestry, and therefore has reduced power for GWAS analysis in women of African Ancestry.

This GWAS is the first to report genome-wide associations for ovarian cancer in African ancestry women. Our findings provide suggestions of genetic association for ovarian cancer in African ancestry women. Only one of the 10 SNPs associated with ovarian cancer in African ancestry women was found to be associated in European ancestry women, though the direction of the association was not consistent across race/ethnic groups, perhaps reflecting differences in linkage disequilibrium across groups. Our data show that the suggestive SNP associations for ovarian cancer among women of African ancestry are not generally replicated among women of European ancestry, which has been similarly observed for other cancers and disease states, such as breast cancer.⁵⁰ Our results demonstrate that some ovarian cancer GWAS variants identified in women of European ancestry may be associated with ovarian cancer in women of African ancestry. This finding is further underscored by our report of statistically significant association of the polygenic risk score derived from published European GWAS hits with risk of EOC in women of African Ancestry. These findings suggest there may be some shared genetic architecture of EOC between women of European and African ancestry in susceptibility to ovarian cancer. Additional genetic studies leveraging larger sample sizes will be needed to refine genetic risk prediction and elucidate the underlying biology of EOC in African ancestry women.

ACKNOWLEDGMENTS

The Ovarian Cancer Association Consortium is supported by a grant from the Ovarian Cancer Research Fund thanks to donations by the family and friends of Kathryn Sladek Smith (PPD/RPCI.07). The scientific development and funding for this project were in part supported by the US National Cancer Institute GAME-ON Post-GWAS Initiative (U19-CA148112). This study made use of data generated by the Wellcome Trust Case Control consortium that was funded by the Wellcome Trust under award 076113. The results published here are in part based upon data generated by The Cancer Genome Atlas Pilot Project established by the National Cancer Institute and National Human Genome Research Institute (dbGap accession number phs000178.v8.p7).

The OCAC OncoArray genotyping project was funded through grants from the U.S. National Institutes of Health (CA1X01HG007491-01 (C.I.A.), U19-CA148112 (T.A.S.), R01-CA149429 (C.M.P.) and R01-CA058598 (M.T.G.); Canadian Institutes of Health Research (MOP-86727 (L.E.K.) and the Ovarian Cancer Research Fund (A.B.). The COGS project was funded through a European Commission's Seventh Framework Programme grant (agreement number 223175 - HEALTH-F2-2009-223175).

M. Barnard was supported by the National Cancer Institute of the National Institutes of Health (Award Number K00 CA212222). L. Peres was supported by the National Cancer Institute of the National Institutes of Health (Award Number K99/R00 CA218681).

Funding for the eQTL analyses in tissue of high-grade serous ovarian cancer in African Americans was supported by the National Institutes of Health grant R01-CA200854 (J.M.S. and J.A.D).

Funding for individual studies: **AAS**: National Institutes of Health (R01-CA142081); **BEL**: National Kankerplan; **BVU**: Vanderbilt University Medical Center's BioVU is supported by the 1S10RR025141-01 instrumentation award and Vanderbilt CTSA grant from the National Institutes of Health (NIH)/National Center for Advancing Translational Sciences (NCATS) (ULTR000445); **CAM**: National Institutes of Health Research Cambridge Biomedical Research Centre and Cancer Research UK Cambridge Cancer Centre; **DKE**: Ovarian Cancer Research Fund; **DOV**: National Institutes of Health R01-CA112523 and R01-CA87538; **HAW**: U.S. National Institutes of Health (R01-CA58598, N01-CN-55424 and N01-PC-67001); **HOP**: University of Pittsburgh School of Medicine Dean's Faculty Advancement Award (F. Modugno), Department of Defense (DAMD17-02-1-0669)

and NCI (K07-CA080668, R01-CA95023, P50-CA159981 MO1-RR000056 R01-CA126841); **LAX:** American Cancer Society Early Detection Professorship (SIOP-06-258-01-COUN) and the National Center for Advancing Translational Sciences (NCATS), Grant UL1TR000124; **MAY:** National Institutes of Health (R01-CA122443, P30-CA15083, P50-CA136393); Mayo Foundation; Minnesota Ovarian Cancer Alliance; Fred C. and Katherine B. Andersen Foundation; **MEC:** NIH (CA54281, CA164973, CA63464); **MOF:** Moffitt Cancer Center, Merck Pharmaceuticals, the state of Florida, Hillsborough County, and the city of Tampa; **NCO:** National Institutes of Health (R01-CA76016) and the Department of Defense (DAMD17-02-1-0666); **NEC:** National Institutes of Health R01-CA54419 and P50-CA105009 and Department of Defense W81XWH-10-1-02802; **NHS:** UM1 CA186107, P01 CA87969, R01 CA49449, R01-CA67262, UM1 CA176726; **NOR:** Helse Vest, The Norwegian Cancer Society, The Research Council of Norway; **NTH:** Radboud University Medical Centre; **ORE:** OHSU Foundation; **OVA:** This work was supported by Canadian Institutes of Health Research grant (MOP-86727) and by NIH/NCI 1 R01CA160669-01A1; **PLC:** Intramural Research Program of the National Cancer Institute; **RMH:** Cancer Research UK, Royal Marsden Hospital; **RPC:** National Institute of Health (P50 CA159981, R01CA126841); **SEA:** Cancer Research UK (C490/A10119 C490/A10124); UK National Institute for Health Research Biomedical Research Centres at the University of Cambridge; **SIS:** The Sister Study (SISTER) is supported by the Intramural Research Program of the NIH, National Institute of Environmental Health Sciences (Z01-ES044005 and Z01-ES049033); **STA:** NIH grants U01 CA71966 and U01 CA69417; **UCI:** NIH R01-CA058860 and the Lon V Smith Foundation grant LVS-39420; **UKO:** The UKOPS study was funded by The Eve Appeal (The Oak Foundation) and supported by the National Institute for Health Research University College London Hospitals Biomedical Research Centre; **USC:** P01CA17054, P30CA14089, R01CA61132, N01PC67010, R03CA113148, R03CA115195, N01CN025403, and California Cancer Research Program (00-01389V-20170, 2II0200); **WMH:** National Health and Medical Research Council of Australia, Enabling Grants ID 310670 & ID 628903. Cancer Institute NSW Grants 12/RIG/1-17 & 15/RIG/1-16.

We are grateful to the family and friends of Kathryn Sladek Smith for their generous support of the Ovarian Cancer Association Consortium through their donations to the Ovarian Cancer Research Fund. The OncoArray and COGS genotyping projects would not have been possible without the contributions of the following: Per Hall

(COGS); Douglas F. Easton, Paul Pharoah, Kyriaki Michailidou, Manjeet K. Bolla, Qin Wang (BCAC), Andrew Berchuck, Marjorie J. Riggan (OCAC), Rosalind A. Eeles, Douglas F. Easton, Ali Amin Al Olama, Zsofia Kote-Jarai, Sara Benlloch (PRACTICAL), Georgia Chenevix-Trench, Antonis Antoniou, Lesley McGuffog, Fergus Couch and Ken Offit (CIMBA), Joe Dennis, Jonathan P. Tyrer, Siddhartha Kar, Alison M. Dunning, Andrew Lee, and Ed Dicks, Craig Luccarini and the staff of the Centre for Genetic Epidemiology Laboratory, Javier Benitez, Anna Gonzalez-Neira and the staff of the CNIO genotyping unit, Jacques Simard and Daniel C. Tessier, Francois Bacot, Daniel Vincent, Sylvie LaBoissière and Frederic Robidoux and the staff of the McGill University and Génome Québec Innovation Centre, Stig E. Bojesen, Sune F. Nielsen, Borge G. Nordestgaard, and the staff of the Copenhagen DNA laboratory, and Julie M. Cunningham, Sharon A. Windebank, Christopher A. Hilker, Jeffrey Meyer and the staff of Mayo Clinic Genotyping Core Facility. We pay special tribute to the contribution of Professor Brian Henderson to the GAME-ON consortium; to Olga M. Sinilnikova for her contribution to CIMBA and for her part in the initiation and coordination of GEMO until she sadly passed away on the 30th June 2014 and to Catherine M. Phelan for her contribution to OCAC and coordination of the OncoArray until she passed away on 22 September 2017.

We thank the study participants, doctors, nurses, clinical and scientific collaborators, health care providers and health information sources who have contributed to the many studies contributing to this manuscript.

We also thank other OCAC members who provided less than 10 EOC samples for the current analysis: Diether Lambrechts (BEL), Digna Velez Edwards (BVU), James Brenton (CAM), Mary Anne Rossing (DOV), Marc Goodman (HAW), Ellen Goode (MAY), Douglas Levine (MSK), Daniel Cramer (NEC), Meir Stampfer (NHS), Line Bjorge (NOR), Lambertus Kiemeny (NTH), Tanja Pejovic (ORE), Linda Cook (OVA), Nicolas Wentzensen (PLC), Susana Banerjee (RMH), Kirsten Moysich (RPC), Dale P. Sandler (SIS), Ian Campbell (SOC), Hoda Anton-Culver (UCI), Taymaa May (UHN), Anna DeFazio (WMH).

Acknowledgements for individual studies: **BEL:** We would like to thank Gilian Peuteman, Thomas Van Brussel, Annick Van den Broeck and Joke De Roover for technical assistance; **BVU:** The dataset(s) used for the analyses described were obtained from Vanderbilt University Medical Center's BioVU; **MOF:** the Total Cancer Care™ Protocol and the Collaborative Data Services and Tissue Core Facilities at the H. Lee Moffitt Cancer Center & Research Institute, an NCI designated Comprehensive Cancer Center (P30-CA076292), Merck Pharmaceuticals and the state of Florida; **NHS:** The NHS/NHSII studies thank the following state cancer registries for their help: AL, AZ, AR, CA, CO, CT, DE, FL, GA, ID, IL, IN, IA, KY, LA, ME, MD, MA, MI, NE, NH, NJ, NY, NC, ND, OH, OK, OR, PA, RI, SC, TN, TX, VA, WA, and WY; **SEA:** SEARCH team, Craig Luccarini, Caroline Baynes, Don Conroy; **SRO:** To thank all members of Scottish Gynaecological Clinical Trails group and SCOTROC1 investigators; **UHN:** Princess Margaret Cancer Centre Foundation-Bridge for the Cure; **UKO:** We particularly thank I. Jacobs, M.Widschwendter, E. Wozniak, A. Ryan, J. Ford and N. Balogun for their contribution to the study; **WMH:** We thank the Gynaecological Oncology Biobank at Westmead, a member of the Australasian Biospecimen Network-Oncology group

REFERENCES

1. Torre LA, Trabert B, DeSantis CE, Miller KD, Samimi G, Runowicz CD, Gaudet MM, Jemal A, Siegel RL. Ovarian cancer statistics, 2018. *CA Cancer J Clin.* 2018;68(4):284-296.
2. Kar SP, Berchuck A, Gayther SA, Goode EL, Moysich KB, Pearce CL, Ramus SJ, Schildkraut JM, Sellers TA, Pharoah PDP. Common Genetic Variation and Susceptibility to Ovarian Cancer: Current Insights and Future Directions. *Cancer Epidemiol Biomarkers Prev.* 2018;27(4):395-404.
3. Phelan CM, Kuchenbaecker KB, Tyrer JP, Kar SP, Lawrenson K, Winham SJ, Dennis J, Pirie A, Riggan MJ, Chornokur G, Earp MA, Lyra PC, Lee JM, Coetzee S, Beesley J, McGuffog L, Soucy P, Dicks E, Lee A, Barrowdale D, Lecarpentier J, Leslie G, Aalfs CM, Aben KKH, Adams M, Adlard J, Andrulis IL, Anton-Culver H, Antonenkova N, Aravantinos G, Arnold N, Arun BK, Arver B, Azzollini J, Balmaña J, Banerjee SN, Barjhoux L, Barkardottir RB, Bean Y, Beckmann MW, Beeghly-Fadiel A, Benitez J, Bermisheva M, Bernardini MQ, Birrer MJ, Bjorge L, Black A, Blankstein K, Blok MJ, Bodelon C, Bogdanova N, Bojesen A, Bonanni B, Borg Å, Bradbury AR, Brenton JD, Brewer C, Brinton L, Broberg P, Brooks-Wilson A, Bruinsma F, Brunet J, Buecher B, Butzow R, Buys SS, Caldes T, Caligo MA, Campbell I, Cannioto R, Carney ME, Cescon T, Chan SB, Chang-Claude J, Chanock S, Chen XQ, Chiew Y-E, Chiquette J, Chung WK, Claes KBM, Conner T, Cook LS, Cook J, Cramer DW, Cunningham JM, D'Aloisio AA, Daly MB, Damiola F, Damirovna SD, Dansonka-Mieszkowska A, Dao F, Davidson R, DeFazio A, Delnatte C, Doheny KF, Diez O, Ding YC, Doherty JA, Domchek SM, et al. Identification of 12 new susceptibility loci for different histotypes of epithelial ovarian cancer. *Nat Genet.* 2017;49(5):680-691.
4. Schildkraut JM, Alberg AJ, Bandera E V., Barnholtz-Sloan J, Bondy M, Cote ML, Funkhouser E, Peters E, Schwartz AG, Terry P, Wallace K, Akushevich L, Wang F, Crankshaw S, Moorman PG. A multi-center population-based case-control study of ovarian cancer in African-American women: The African American Cancer Epidemiology Study (AACES). *BMC Cancer.* 2014;14(1):688.
5. Pharoah PDP, Tsai Y-Y, Ramus SJ, Phelan CM, Goode EL, Lawrenson K, Buckley M, Fridley BL, Tyrer JP, Shen H, Weber R, Karevan R, Larson MC, Song H, Tessier DC, Bacot F, Vincent D, Cunningham

- JM, Dennis J, Dicks E, Aben KK, Anton-Culver H, Antonenkova N, Armasu SM, Baglietto L, Bandera E V, Beckmann MW, Birrer MJ, Bloom G, Bogdanova N, Brenton JD, Brinton LA, Brooks-Wilson A, Brown R, Butzow R, Campbell I, Carney ME, Carvalho RS, Chang-Claude J, Chen YA, Chen Z, Chow W-H, Cicek MS, Coetzee G, Cook LS, Cramer DW, Cybulski C, Dansonka-Mieszkowska A, Despierre E, Doherty JA, Dörk T, du Bois A, Dürst M, Eccles D, Edwards R, Ekici AB, Fasching PA, Fenstermacher D, Flanagan J, Gao Y-T, Garcia-Closas M, Gentry-Maharaj A, Giles G, Gjyshi A, Gore M, Gronwald J, Guo Q, Halle MK, Harter P, Hein A, Heitz F, Hillemanns P, Hoatlin M, Høgdall E, Høgdall CK, Hosono S, Jakubowska A, Jensen A, Kalli KR, Karlan BY, Kelemen LE, Kiemenev LA, Kjaer SK, Konecny GE, Krakstad C, Kupryjanczyk J, Lambrechts D, Lambrechts S, Le ND, Lee N, Lee J, Leminen A, Lim BK, Lissowska J, Lubiński J, Lundvall L, Lurie G, Massuger LFAG, et al. GWAS meta-analysis and replication identifies three new susceptibility loci for ovarian cancer. *Nat Genet.* 2013;45(4):362-370, 370e1-2.
6. Li Y, Byun J, Cai G, Xiao X, Han Y, Cornelis O, Dinulos JE, Dennis J, Easton D, Gorlov I, Seldin MF, Amos CI. FastPop: a rapid principal component derived method to infer intercontinental ancestry using genetic data. *BMC Bioinformatics.* 2016;17(1):122.
7. O'Connell J, Gurdasani D, Delaneau O, Pirastu N, Ulivi S, Cocca M, Traglia M, Huang J, Huffman JE, Rudan I, McQuillan R, Fraser RM, Campbell H, Polasek O, Asiki G, Ekoru K, Hayward C, Wright AF, Vitart V, Navarro P, Zagury J-F, Wilson JF, Toniolo D, Gasparini P, Soranzo N, Sandhu MS, Marchini J. A general approach for haplotype phasing across the full spectrum of relatedness. *PLoS Genet.* 2014;10(4):e1004234.
8. Gibbs RA, Boerwinkle E, Doddapaneni H, Han Y, Korchina V, Kovar C, Lee S, Muzny D, Reid JG, Zhu Y, Wang J, Chang Y, Feng Q, Fang X, Guo X, Jian M, Jiang H, Jin X, Lan T, Li G, Li J, Li Y, Liu S, Liu X, Lu Y, Ma X, Tang M, Wang B, Wang G, Wu H, Wu R, Xu X, Yin Y, Zhang D, Zhang W, Zhao J, Zhao M, Zheng X, Lander ES, Altshuler DM, Gabriel SB, Gupta N, Gharani N, Toji LH, Gerry NP, Resch AM, Flicek P, Barker J, Clarke L, Gil L, Hunt SE, Kelman G, Kulesha E, Leinonen R, McLaren WM, Radhakrishnan R, Roa A, Smirnov D, Smith RE, Streeter I, Thormann A, Toneva I, Vaughan B, Zheng-Bradley X, Bentley DR, Grocock R, Humphray S, James T, Kingsbury Z, Lehrach H, Sudbrak R,

- Albrecht MW, Amstislavskiy VS, Borodina TA, Lienhard M, Mertes F, Sultan M, Timmermann B, Yaspo M-L, Mardis ER, Wilson RK, Fulton L, Fulton R, Sherry ST, Ananiev V, Belaia Z, Beloslyudtsev D, Bouk N, Chen C, Church D, Cohen R, Cook C, Garner J, Hefferon T, Kimelman M, Liu C, Lopez J, Meric P, et al. A global reference for human genetic variation. *Nature*. 2015;526(7571):68-74.
9. Das S, Forer L, Schönherr S, Sidore C, Locke AE, Kwong A, Vrieze SI, Chew EY, Levy S, McGue M, Schlessinger D, Stambolian D, Loh P-R, Iacono WG, Swaroop A, Scott LJ, Cucca F, Kronenberg F, Boehnke M, Abecasis GR, Fuchsberger C. Next-generation genotype imputation service and methods. *Nat Genet*. 2016;48(10):1284-1287.
10. Marchini J, Howie B, Myers S, McVean G, Donnelly P. A new multipoint method for genome-wide association studies by imputation of genotypes. *Nat Genet*. 2007;39(7):906-913. doi:10.1038/ng2088.
11. Wakefield J. A Bayesian measure of the probability of false discovery in genetic epidemiology studies. *Am J Hum Genet*. 2007;81(2):208-227.
12. Irizarry RA, Hobbs B, Collin F, Beazer-Barclay YD, Antonellis KJ, Scherf U, Speed TP. Exploration, normalization, and summaries of high density oligonucleotide array probe level data. *Biostatistics*. 2003;4(2):249-264.
13. Chen C, Grennan K, Badner J, Zhang D, Gershon E, Jin L, Liu C. Removing batch effects in analysis of expression microarray data: an evaluation of six batch adjustment methods. *PLoS One*. 2011;6(2):e17238.
14. Dai M, Wang P, Boyd AD, Kostov G, Athey B, Jones EG, Bunney WE, Myers RM, Speed TP, Akil H, Watson SJ, Meng F. Evolving gene/transcript definitions significantly alter the interpretation of GeneChip data. *Nucleic Acids Res*. 2005;33(20):e175-e175.
15. Feng Y, Rhie SK, Huo D, Ruiz-Narvaez EA, Haddad SA, Ambrosone CB, John EM, Bernstein L, Zheng W, Hu JJ, Ziegler RG, Nyante S, Bandera E V, Ingles SA, Press MF, Deming SL, Rodriguez-Gil JL, Zheng Y, Yao S, Han Y-J, Ogundiran TO, Rebbeck TR, Adebamowo C, Ojengbede O, Falusi AG, Hennis A, Nemesure B, Ambis S, Blot W, Cai Q, Signorello L, Nathanson KL, Lunetta KL, Sucheston-Campbell LE, Bensen JT, Chanock SJ, Marchand L, Le, Olshan AF, Kolonel LN, Conti D V, Coetzee GA,

- Stram DO, Olopade OI, Palmer JR, Haiman CA. Characterizing Genetic Susceptibility to Breast Cancer in Women of African Ancestry. *Cancer Epidemiol Biomarkers Prev.* 2017;26(7):1016-1026.
16. Haiman CA, Chen GK, Blot WJ, Strom SS, Berndt SI, Kittles RA, Rybicki BA, Isaacs WB, Ingles SA, Stanford JL, Diver WR, Witte JS, Hsing AW, Nemesure B, Rebbeck TR, Cooney KA, Xu J, Kibel AS, Hu JJ, John EM, Gueye SM, Watya S, Signorello LB, Hayes RB, Wang Z, Yeboah E, Tettey Y, Cai Q, Kolb S, Ostrander EA, Zeigler-Johnson C, Yamamura Y, Neslund-Dudas C, Haslag-Minoff J, Wu W, Thomas V, Allen GO, Murphy A, Chang B-L, Zheng SL, Leske MC, Wu S-Y, Ray AM, Hennis AJM, Thun MJ, Carpten J, Casey G, Carter EN, Duarte ER, Xia LY, Sheng X, Wan P, Pooler LC, Cheng I, Monroe KR, Schumacher F, Le Marchand L, Kolonel LN, Chanock SJ, Van Den Berg D, Stram DO, Henderson BE. Genome-wide association study of prostate cancer in men of African ancestry identifies a susceptibility locus at 17q21. *Nat Genet.* 2011;43(6):570-573.
17. Dudbridge F. Power and Predictive Accuracy of Polygenic Risk Scores. Wray NR, ed. *PLoS Genet.* 2013;9(3):e1003348.
18. Lawrenson K, Song F, Hazelett DJ, Kar SP, Tyrer J, Phelan CM, Corona RI, Rodríguez-Malavé NI, Seo J-H, Adler E, Coetzee SG, Segato F, Fonseca MAS, Amos CI, Carney ME, Chenevix-Trench G, Choi J, Doherty JA, Jia W, Jin GJ, Kim B-G, Le ND, Lee J, Li L, Lim BK, Adenan NA, Mizuno M, Park B, Pearce CL, Shan K, Shi Y, Shu X-O, Sieh W, Thompson PJ, Wilkens LR, Wei Q, Woo YL, Yan L, Karlan BY, Freedman ML, Noushmehr H, Goode EL, Berchuck A, Sellers TA, Teo S-H, Zheng W, Matsuo K, Park S, Chen K, Pharoah PDP, Gayther SA, Goodman MT. Genome-wide association studies identify susceptibility loci for epithelial ovarian cancer in east Asian women. *Gynecol Oncol.* 2019;153(2):343-355.
19. Penning TM, Drury JE. Human ald-keto reductases: Function, gene regulation, and single nucleotide polymorphisms. *Arch Biochem Biophys.* 2007;464(2):241-250.
20. Penning TM, Burczynski ME, Jez JM, Hung CF, Lin HK, Ma H, Moore M, Palackal N, Ratnam K. Human 3 α -hydroxysteroid dehydrogenase isoforms (AKR1C1-AKR1C4) of the ald-keto reductase superfamily: functional plasticity and tissue distribution reveals roles in the inactivation and formation of

- male and female sex hormones. *Biochem J.* 2000;351(Pt 1):67-77.
21. Sinreih M, Anko M, Kene NH, Kocbek V, Rižner TL. Expression of AKR1B1, AKR1C3 and other genes of prostaglandin F₂α biosynthesis and action in ovarian endometriosis tissue and in model cell lines. *Chem Biol Interact.* 2015;234:320-331.
 22. Hevir N, Vouk K, Šinkovec J, Ribič-Pucelj M, Lanišnik Rižner T. Aldo-keto reductases AKR1C1, AKR1C2 and AKR1C3 may enhance progesterone metabolism in ovarian endometriosis. *Chem Biol Interact.* 2011;191(1-3):217-226.
 23. Šmuc T, Hevir N, Ribič-Pucelj M, Husen B, Thole H, Rižner TL. Disturbed estrogen and progesterone action in ovarian endometriosis. *Mol Cell Endocrinol.* 2009;301(1-2):59-64.
 24. Ju R, Wu W, Fei J, Qin Y, Tang Q, Wu D, Xia Y, Wu J, Wang X. Association analysis between the polymorphisms of HSD17B5 and HSD17B6 and risk of polycystic ovary syndrome in Chinese population. *Eur J Endocrinol.* 2015;172(3):227-233.
 25. Park HK, Schildkraut JM, Alberg AJ, Bandera E V., Barnholtz-Sloan JS, Bondy M, Crankshaw S, Funkhouser E, Moorman PG, Peters ES, Terry P, Wang F, Ruterbusch JJ, Schwartz AG, Cote ML. Benign gynecologic conditions are associated with ovarian cancer risk in African-American women: a case–control study. *Cancer Causes Control.* 2018;29(11):1081-1091.
 26. Zhang L, Yang S, Wennmann DO, Chen Y, Kremerskothen J, Dong J. KIBRA: In the brain and beyond. *Cell Signal.* 2014;26(7):1392-1399.
 27. Corneveaux JJ, Liang WS, Reiman EM, Webster JA, Myers AJ, Zismann VL, Joshipura KD, Pearson J V, Hu-Lince D, Craig DW, Coon KD, Dunckley T, Bandy D, Lee W, Chen K, Beach TG, Mastroeni D, Grover A, Ravid R, Sando SB, Aasly JO, Heun R, Jessen F, Kölsch H, Rogers J, Hutton ML, Melquist S, Petersen RC, Alexander GE, Caselli RJ, Papassotiropoulos A, Stephan DA, Huentelman MJ. Evidence for an association between KIBRA and late-onset Alzheimer's disease. *Neurobiol Aging.* 2010;31(6):901-909. doi:10.1016/j.neurobiolaging.2008.07.014.
 28. Burgess JD, Pedraza O, Graff-Radford NR, Hirpa M, Zou F, Miles R, Nguyen T, Li M, Lucas JA, Ivnik RJ, Crook J, Pankratz VS, Dickson DW, Petersen RC, Younkin SG, Ertekin-Taner N. Association of

- common KIBRA variants with episodic memory and AD risk. *Neurobiol Aging*. 2011;32(3):557.e1-9.
29. Pawlowski TL, Huentelman MJ. Identification of a Common Variant Affecting Human Episodic Memory Performance Using a Pooled Genome-Wide Association Approach: A Case Study of Disease Gene Identification. In: Humana Press, Totowa, NJ; 2011:261-269.
30. Ling J, Huang Y, Zhang L, Wei D, Cheng W. Association of KIBRA polymorphism with risk of Alzheimer's disease: Evidence based on 20 case-control studies. *Neurosci Lett*. 2018;662:77-83.
31. Wang S, Huo D, Ogundiran TO, Ojengbede O, Zheng W, Nathanson KL, Nemesure B, Ambbs S, Olopade OI, Zheng Y. Genetic variation in the Hippo pathway and breast cancer risk in women of African ancestry. *Mol Carcinog*. 2018;57(10):1311-1318.
32. Mudduwa L, Peiris H, Gunasekara S, Abeysiriwardhana D, Liyanage N, Rayala SK, Liyanage T. KIBRA; a novel biomarker predicting recurrence free survival of breast cancer patients receiving adjuvant therapy. *BMC Cancer*. 2018;18(1):589.
33. Knight JF, Sung VYC, Kuzmin E, Couzens AL, de Verteuil DA, Ratcliffe CDH, Coelho PP, Johnson RM, Samavarchi-Tehrani P, Gruosso T, Smith HW, Lee W, Saleh SM, Zuo D, Zhao H, Guiot M-C, Davis RR, Gregg JP, Moraes C, Gingras A-C, Park M. KIBRA (WWC1) Is a Metastasis Suppressor Gene Affected by Chromosome 5q Loss in Triple-Negative Breast Cancer. *Cell Rep*. 2018;22(12):3191-3205.
34. Lin S-Y, Morrison JR, Phillips DJ, de Kretser DM. Regulation of ovarian function by the TGF-beta superfamily and follistatin. *Reproduction*. 2003;126(2):133-148.
35. Risch HA. Hormonal etiology of epithelial ovarian cancer, with a hypothesis concerning the role of androgens and progesterone. *J Natl Cancer Inst*. 1998;90(23):1774-1786.
36. Urbanek M, Legro RS, Driscoll DA, Azziz R, Ehrmann DA, Norman RJ, Strauss JF, Spielman RS, Dunaif A. Thirty-seven candidate genes for polycystic ovary syndrome: strongest evidence for linkage is with follistatin. *Proc Natl Acad Sci U S A*. 1999;96(15):8573-8578.
37. Jones MR, Wilson SG, Mullin BH, Mead R, Watts GF, Stuckey BGA. Polymorphism of the follistatin gene in polycystic ovary syndrome. *Mol Hum Reprod*. 2007;13(4):237-241.

38. Chittenden BG, Fullerton G, Maheshwari A, Bhattacharya S. Polycystic ovary syndrome and the risk of gynaecological cancer: a systematic review. *Reprod Biomed Online*. 2009;19(3):398-405.
39. Chomez P, Backer O De, Bertrand M, Plaen E De, Boon T, Lucas S. An Overview of the MAGE Gene Family with the Identification of All Human Members of the Family An Overview of the MAGE Gene Family with the Identification of All Human Members of the Family 1. *Cance Res*. 2001;61:5544-5551.
40. Caballero OL, Chen YT. Cancer/testis (CT) antigens: Potential targets for immunotherapy. *Cancer Sci*. 2009;100(11):2014-2021.
41. Daudi S, Eng KH, Mhawech-Fauceglia P, Morrison C, Miliotto A, Beck A, Matsuzaki J, Tsuji T, Groman A, Gnjjatic S, Spagnoli G, Lele S, Odunsi K. Expression and immune responses to MAGE antigens predict survival in epithelial ovarian cancer. *PLoS One*. 2014;9(8):e104099.
42. Eng KH, Szender JB, Etter JL, Kaur J, Poblete S, Huang R-Y, Zhu Q, Grzesik KA, Battaglia S, Cannioto R, Krolewski JJ, Zsiros E, Frederick PJ, Lele SB, Moysich KB, Odunsi KO. Paternal lineage early onset hereditary ovarian cancers: A Familial Ovarian Cancer Registry study. Eng C, ed. *PLoS Genet*. 2018;14(2):e1007194.
43. Wapinski O, Chang HY. Long noncoding RNAs and human disease. *Trends Cell Biol*. 2011;21(6):354-361.
44. Richards EJ, Permeth-vey J, Li Y, Chen YA, Coppola D, Reid BM, Lin H, Teer JK, Berchuck A, Birrer MJ, Lawrenson K, Monteiro ANA, Schildkraut JM, Goode EL, Gayther SA, Sellers TA, Cheng JQ. A functional variant in *HOXA11-AS*, a novel long non-coding RNA, inhibits the oncogenic phenotype of epithelial ovarian cancer. *Oncotarget*. 2015;6(33).
45. Dipple KM, Zhang YH, Huang BL, McCabe LL, Dallongeville J, Inokuchi T, Kimura M, Marx H, Roederer G, Shih V, Yamaguchi S, Yoshida J, McCabe E. Glycerol kinase deficiency: evidence for complexity in a single gene disorder. *Hum Genet*. 2001;109(1):55-62.
46. Seals DF, Azucena EF, Pass I, Tesfay L, Gordon R, Woodrow M, Resau JH, Courtneidge SA. The adaptor protein Tks5/Fish is required for podosome formation and function, and for the protease-driven invasion of cancer cells. *Cancer Cell*. 2005;7(2):155-165.

47. Calin-Jageman I, Lee A. Cav1 L-type Ca²⁺ channel signaling complexes in neurons. *J Neurochem*. 2008;105(3):573-583.
48. Li Y, Lindsay J, Wang L, Zhou S-F. Structure, function and polymorphism of human cytosolic sulfotransferases. *Curr Drug Metab*. 2008;9(2):99-105.
49. Mitchell BD, Fornage M, McArdle PF, Cheng Y-C, Pulit SL, Wong Q, Dave T, Williams SR, Corriveau R, Gwinn K, Doheny K, Laurie CC, Rich SS, de Bakker PIW, Stroke Genetics Network (SiGN). Using previously genotyped controls in genome-wide association studies (GWAS): application to the Stroke Genetics Network (SiGN). *Front Genet*. 2014;5:95.
50. Hutter CM, Young AM, Ochs-Balcom HM, Carty CL, Wang T, Chen CTL, Rohan TE, Kooperberg C, Peters U. Replication of Breast Cancer GWAS Susceptibility Loci in the Women's Health Initiative African American SHARe Study. *Cancer Epidemiol Biomarkers Prev*. 2011;20(9):1950-1959.

Table 1: SNPs demonstrating genome-wide suggestive evidence of association in the African Ancestry OncoArray Analysis and comparison with results of OCAC studies of women of European ancestry

Subtype	Nearest Gene	SNP ID (Effect / other allele)	Build 37 Chr:Pos	African Ancestry**				European Ancestry ^{3***}		
				EAF	OR (95% CI)	P-value	BFD P ^t	EAF	OR (95% CI)	P-value
EOC	<i>AKR1C3</i>	rs4525119 (T/C)	10:5091954	0.331	0.70 (0.61-0.81)	4.9 x 10 ⁻⁷	8%	0.300	1.00 (0.97-1.03)	0.936
	<i>LOC101927394</i>	rs7643459* (T/G)	3:8004828	0.362	1.40 (1.22-1.60)	8.4 x 10 ⁻⁷	5%	0.421	1.00 (0.98-1.03)	0.742
	<i>UGT2A2</i>	rs4286604 (A/G)	4:70442165	0.268	0.69 (0.59-0.80)	8.5 x 10 ⁻⁷	5%	0.227	1.01 (0.98-1.05)	0.421
	<i>WWC1</i>	rs142091544 (T/C)	5:167714000	0.034	3.22 (2.02-5.13)	9.4 x 10 ⁻⁷	9%	0.010	0.97 (0.83-1.13)	0.665
HGSO _C	<i>FST</i>	rs37792 (G/A)	5:52644647	0.342	0.65 (0.55-0.76)	6.0 x 10 ⁻⁸	<1%	0.308	1.03 (0.99-1.06)	0.110
	<i>MAGEC1</i>	rs57403204 (G/A)	X:141078552	0.064	2.62 (1.83-3.76)	1.7x10 ⁻⁷	1%	0.013	1.03 (0.90-1.18)	0.682
	<i>LOC105376360</i>	rs79079890 (G/T)	10:3684148	0.032	3.20 (2.05-4.99)	3.0x10 ⁻⁷	3%	0.131	1.02 (0.98-1.08)	0.534
	<i>PRPSAP1</i>	rs66459581 (A/C)	17:74355264	0.234	1.63 (1.35-1.97)	5.1x10 ⁻⁷	2%	0.089	0.97 (0.92-1.03)	0.377
	<i>GABRG3</i>	rs116046250 (G/T)	15:27231950	0.046	2.95 (1.92-4.54)	8.7x10 ⁻⁷	7%	---	---	---
	<i>LOC105377300 / GK2</i>	rs192876988 (C/T)	4:80297251	0.046	3.01 (1.94-4.68)	9.2x10 ⁻⁷	8%	0.014	0.75 (0.62-0.90)	0.002

SNP: single nucleotide polymorphism; EAF: effect allele frequency; OR: odds ratio; CI: confidence interval; EOC: epithelial ovarian cancer; HGSO_C: high-grade serous ovarian carcinoma.

We show the strongest associated SNP for each locus reaching $P < 1 \times 10^{-6}$ for each subtype.

*Genotyped SNPs, if not indicated otherwise then imputed

** African ancestry was defined as >50% African ancestry as calculated by FastPop

*** European ancestry was defined by self-report

^tBFDP: Bayesian false discovery probability assuming a prior of 1:1,000 among women of African ancestry

Table 2: Association of SNPs previously identified in European Ancestry GWAS of EOC among women of African Ancestry

Locus	SNP ID	Build 37 Chr:Pos	Nearest Gene	Phenotype	European Ancestry*			African Ancestry
					OR (95% CI)	P-value	MAF	OR (95% CI)
Confirmed SNPs in European ancestry OncoArray meta-analysis								
1p34.3	rs58722170	1:38096421	<i>RSPO1</i>	Serous	1.10 (1.07-1.13)	1.4E-09	0.203	0.99 (0.88-1.11)
2q14.1	rs752590	2:113972945	<i>PAX8</i>	Mucinous	1.30 (1.21-1.39)	2.2E-12	0.408	1.00 (0.88-1.13)
2q31.1	rs711830	2:177037311	<i>HOXD3</i>	Mucinous	1.27 (1.20-1.35)	1.1E-14	0.114	1.10 (0.99-1.22)
2q31.1	rs6755777	2:177043226	<i>HAGLR</i>	Serous	1.12 (1.09-1.15)	2.7E-15	0.131	1.06 (0.88-1.28)
3q25.31	rs62274041	3:156435640	<i>TIPARP</i>	HGSC	1.57 (1.48-1.66)	2.1E-57	--	--
5p15.33	rs10069690	5:1279790	<i>TERT</i>	Serous	1.13 (1.09-1.17)	1.5E-12	0.401	0.94 (0.83-1.06)
5p15.33	rs7705526	5:1285974	<i>TERT</i>	Serous borderline	1.38 (1.29-1.48)	5.5E-19	0.189	1.23 (1.04-1.44)
8q21.13	rs76837345	8:82668818	<i>CHMP4C</i>	HGSC	1.20 (1.13-1.28)	9.0E-10	--	--
8q24.21	rs1400482	8:129541931	<i>LINC00824</i>	Serous	1.23 (1.19-1.28)	7.4E-26	--	--
9p22.2	rs10962692	9:16915874	<i>BNC2</i>	HGSC	1.36 (1.30-1.42)	1.4E-47	0.032	0.97 (0.61-1.54)
9q34.2	rs8176685	9:136138765	<i>ABO</i>	HGSC	1.15 (1.10-1.19)	5.2E-12	--	--
10p12.31	rs144962376	10:21878831	<i>MLLT10</i>	Serous	1.10 (1.06-1.13)	6.6E-09	--	--
17q12	rs7405776	17:36093022	<i>HNF1B</i>	Serous	1.10 (1.07-1.14)	1.9E-10	0.482	1.16 (1.02-1.32)
17q12	rs11651755	17:36099840	<i>HNF1B</i>	Clear cell	0.79 (0.73-0.86)	6.8E-09	0.329	1.11 (0.97-1.27)
17q21.31	rs7207826	17:46500673	<i>SKAP1</i>	Serous	1.14 (1.10-1.18)	1.2E-14	0.485	1.05 (0.92-1.20)
17q21.32	rs1879586	17:43567337	<i>PLEKHM1</i>	HGSC	1.15 (1.10-1.19)	2.5E-12	0.042	1.49 (1.07-2.07)
19p13.11	rs4808075	19:17390291	<i>BABAM1</i>	HGSC	1.20 (1.16-1.24)	3.3E-24	0.237	1.21 (1.04-1.40)
19q11.21	rs688187	19:39732752	<i>IFNL3</i>	Mucinous	1.43 (1.33-1.53)	1.2E-22	0.384	0.97 (0.88-1.07)
Newly identified SNPs in European ancestry OncoArray meta-analysis								
2q13	rs2165109	2:111818658	<i>ACOXL</i>	HGSC	1.09 (1.05-1.12)	2.0E-08	0.209	0.99 (0.84-1.16)
3q22.3	rs112071820	3:138849110	<i>BPESC1</i>	Mucinous	1.29 (1.20-1.37)	1.5E-13	0.328	1.14 (0.99-1.31)
3q28	rs9870207	3:190525516	<i>GMNC</i>	Serous borderline, LGSC	1.19 (1.12-1.27)	4.5E-08	0.364	1.08 (0.94-1.24)
4q32.2	rs13113999	4:167187046	<i>TLL1</i>	Serous borderline	1.23 (1.14-1.32)	4.7E-08	0.092	0.92 (0.77-1.10)
5q12.3	rs555025179	5:66121089	<i>MAST4</i>	Endometrioid	1.18 (1.11-1.26)	4.5E-08	0.415	0.96 (0.83-1.11)
8q21.11	rs150293538	8:77320354	<i>LINC01111</i>	Serous borderline, LGSC	2.19 (1.65-2.90)	2.0E-09	0.005	--
8q24.21	rs9886651	8:128817883	<i>PVT1</i>	HGSC	1.08 (1.05-1.11)	1.9E-09	0.150	1.10 (0.92-1.31)
9q31.1	rs320203	9:104943226	<i>LOC105376188</i>	Mucinous	1.29 (1.18-1.41)	1.7E-08	0.220	0.92 (0.79-1.07)
10q24.33	rs7902587	10:105694301	<i>LOC102724351</i>	Serous borderline, LGSC	1.29 (1.18-1.41)	4.0E-08	0.172	1.01 (0.88-1.16)
12q24.31	rs7953249	12:121403724	<i>HNF1A-AS1</i>	HGSC	1.08 (1.06-1.11)	4.5E-10	0.341	1.04 (0.91-1.19)
18q11.2	rs8098244	18:21405553	<i>LAMA3</i>	Serous borderline, LGSC	1.19 (1.12-1.27)	3.9E-08	0.051	1.19 (0.87-1.61)
22q12.1	rs6005807	22:28934313	<i>TTC28/LOC101929594</i>	HGSC	1.17 (1.10-1.23)	1.2E-08	0.125	1.12 (0.92-1.37)

SNP: single nucleotide polymorphism; Chr: chromosome; Pos: position; OR: odds ratio; CI: confidence interval; MAF: minor allele frequency; HGSC: high-grade serous carcinoma; LGSC: low-grade serous carcinoma.

^aPower calculations assume a disease prevalence rate of 0.01.

* African ancestry was defined as >50% African ancestry as calculated by FastPop

** European ancestry was defined by self-report

Table 3: Summary of statistically significant or suggestive results for fine mapping in African ancestry women of loci previously identified in GWAS of European ancestry women

Locus	SNP ID	Build 37 Chr:Pos	Nearest Gene	Phenotype	EOC			
					Number of SNPs Plotted	Minimum SNP position in region	Minimum SNP P-value	Number of SNP Plotted
Confirmed SNPs in European ancestry OncoArray meta-analysis								
8q21.13	rs76837345	8:82668818	<i>CHMP4C</i>	HGSC	4045	chr8:82866267	1.44E-05 ^c	3523
9p22.2	rs10962692	9:16915874	<i>BNC2</i>	HGSC	5248	chr9:16978052	2.67E-05 ^c	4746
Newly identified SNPs in European ancestry OncoArray meta-analysis								
3q22.3	rs112071820	3:138849110	<i>BPESC1</i>	Mucinous	2922	chr3:138839642	3.34E-05 ^c	--
10q24.33	rs7902587	10:105694301	<i>LOC102724351</i>	Serous borderline, LGSC	3192	chr10:105375295	3.40E-05 ^c	2852
12q24.31	rs7953249	12:121403724	<i>HNF1A-AS1</i>	HGSC	3680	chr12:121113096	6.90E-05	3272
18q11.2	rs8098244	18:21405553	<i>LAMA3</i>	Serous borderline, LGSC	2685	chr18:21555816	1.84E-05 ^b	2431

EOC: epithelial ovarian cancer; HGSC: high-grade serous ovarian cancer; SNP: single nucleotide polymorphism; Chr: chromosome; Pos: position; LGSC: low-grade serous ovarian cancer.

^aFine mapping among HGSC was completed only for those SNPs associated with serous ovarian cancer.

^bSignificant at the Bonferroni threshold (0.05/number of SNPs plotted).

^cSignificant at the suggestive threshold (0.05/(number of SNPs plotted/3)).

SUPPLEMENTARY FIGURE LEGEND

Supplementary Figure 1

Quantile-quantile plots for the GWAS of (a) EOC and (b) HGSOC.

Data are shown as observed and expected negative-log p-values.

Supplementary Figure 2

Manhattan plots for the GWAS of (a) EOC and (b) HGSOC.

Data are shown as negative-log p-values.

Supplementary Figure 3

Local association plots for genetic loci reported for EOC in Table 2 near the genes: (a) *AKR1C3*, (b) *LOC101927394*, (c) *UGT2A2*, (d) *WWC1*.

Data are shown as negative-log p-values.

Supplementary Figure 4

Local association plots for genetic loci reported for HGSOC in Table 2 near the genes: (a) *FST*, (b) *MAGEC1*, (c) *LOC105376360*, (d) *PRPSAP1*, (e) *GABRG3*, (f) *LOC105377300 / GK2*.

Data are shown as negative-log p-values.

Supplementary Figure 5

Results of eQTL analysis in 260 ovarian tissues from AACES participants for selected SNPs from the GWAS of EOC and HGSOC*

Listed below the figure: *Boxplots represent the distribution of measured expression versus genotype (rounded to the nearest whole number for imputed dosage variables). P-values are reported from linear models with covariate adjustment for age and two principal components of ancestry.

Supplementary Table 1: Descriptive statistics for study participants

Study Sites	EOC			HGSOC		
	Cases	Controls	Total	Cases	Controls	Total
	n (%)	n (%)	n (%)	n (%)	n (%)	n (%)
AAS – African American Cancer Epidemiology Study	467 (61.9)	563 (45.6)	1030 (51.8)	349 (65.0)	563 (45.6)	912 (51.5)
BEL – Belgium Ovarian Cancer Study	0 (0.0)	2 (0.2)	2 (0.1)	0 (0.0)	2 (0.2)	2 (0.1)
BVU – The BioVU DNA Repository	8 (1.1)	98 (7.9)	106 (5.3)	4 (0.7)	98 (7.9)	102 (5.8)
CAM – Cancer Research UK, Cambridge Research Institute	1 (0.1)	0 (0.0)	1 (0.1)	0 (0.0)	0 (0.0)	0 (0.0)
DKE – Duke University Clinic	7 (0.9)	0 (0.0)	7 (0.4)	3 (0.6)	0 (0.0)	3 (0.2)
DOV – Diseases of the Ovary and their Evaluation	7 (0.9)	27 (2.2)	34 (1.7)	4 (0.7)	27 (2.2)	31 (1.8)
HAW – Hawaii Ovarian Cancer Study	0 (0.0)	3 (0.2)	3 (0.2)	0 (0.0)	3 (0.2)	3 (0.2)
HOP – Hormones and Ovarian Cancer Prediction	16 (2.1)	21 (1.7)	37 (1.9)	10 (1.9)	21 (1.7)	31 (1.8)
LAX – Women's Cancer Program at the Samuel Oschin Comprehensive Cancer Institute	18 (2.4)	0 (0.0)	18 (0.9)	15 (2.8)	0 (0.0)	15 (0.9)
MAY – Mayo Clinic Ovarian Cancer Case-Control Study	3 (0.4)	5 (0.4)	8 (0.4)	2 (0.4)	5 (0.4)	7 (0.4)
MEC – Multiethnic Cohort Study	10 (1.3)	13 (1.1)	23 (1.2)	6 (1.1)	13 (1.1)	19 (1.1)
MOF – Moffitt Cancer Center Ovarian Cancer Study	16 (2.1)	14 (1.1)	30 (1.5)	13 (2.4)	14 (1.1)	27 (1.5)
MSK – Memorial Sloan Kettering Cancer Center	8 (1.1)	20 (1.6)	28 (1.4)	8 (1.5)	20 (1.6)	28 (1.6)
NCO – North Carolina Ovarian Cancer Study	108 (14.3)	160 (13.0)	268 (13.5)	76 (14.2)	160 (13.0)	236 (13.3)
NEC – New England Case-Control Study of Ovarian Cancer	6 (0.8)	5 (0.4)	11 (0.6)	6 (1.1)	5 (0.4)	11 (0.6)
NHS – Nurses' Health Study I and II	3 (0.4)	0 (0.0)	3 (0.2)	3 (0.6)	0 (0.0)	3 (0.2)
NOR – University of Bergen, Haukeland University Hospital, Norway	1 (0.1)	0 (0.0)	1 (0.1)	0 (0.0)	0 (0.0)	0 (0.0)
NTH – Nijmegen Ovarian Cancer Study	1 (0.1)	0 (0.0)	1 (0.1)	0 (0.0)	0 (0.0)	0 (0.0)
ORE – Oregon Ovarian Cancer Registry	1 (0.1)	0 (0.0)	1 (0.1)	1 (0.2)	0 (0.0)	1 (0.1)
OVA – Ovarian Cancer in Alberta and British Columbia	1 (0.1)	0 (0.0)	1 (0.1)	0 (0.0)	0 (0.0)	0 (0.0)
PLC – Prostate-Lung-Colorectal and Ovarian Cancer Screening Trial	5 (0.7)	85 (6.9)	90 (4.6)	2 (0.4)	85 (6.9)	87 (4.9)
RMH – Royal Marsden Hospital Ovarian Cancer Study	1 (0.1)	0 (0.0)	1 (0.1)	1 (0.2)	0 (0.0)	1 (0.1)
RPC – Roswell Park Cancer Institute Ovarian Cancer Cohort	4 (0.5)	0 (0.0)	4 (0.2)	3 (0.6)	0 (0.0)	3 (0.2)
SEA – UK Studies of Epidemiology and Risk Factors in Cancer Heredity (SEARCH) Ovarian Cancer Study	2 (0.3)	1 (0.1)	3 (0.2)	1 (0.2)	1 (0.1)	2 (0.1)
SIS – The Sister Study	8 (1.1)	131 (10.6)	139 (7.0)	3 (0.6)	131 (10.6)	134 (7.6)
SOC – Southampton Ovarian Cancer Study	1 (0.1)	0 (0.0)	1 (0.1)	0 (0.0)	0 (0.0)	0 (0.0)
STA – Genetic Epidemiology of Ovarian Cancer	12 (1.6)	45 (3.6)	57 (2.9)	4 (0.7)	45 (3.6)	49 (2.8)
UCI – UC Irvine Ovarian Cancer Study	0 (0.0)	2 (0.2)	2 (0.1)	0 (0.0)	2 (0.2)	2 (0.1)
UHN – Princess Margaret Cancer Centre	4 (0.5)	0 (0.0)	4 (0.2)	2 (0.4)	0 (0.0)	2 (0.1)
UKO – UK Ovarian Cancer Population Study	4 (0.5)	10 (0.8)	14 (0.7)	2 (0.4)	10 (0.8)	12 (0.7)
USC – Los Angeles County Case-Control Studies of Ovarian Cancer	31 (4.1)	30 (2.4)	61 (3.1)	18 (3.4)	30 (2.4)	48 (2.7)

WMH – Westmead Institute for Cancer Research – Westmead Hospital	1 (0.1)	0 (0.0)	1 (0.1)	1 (0.1)	0 (0.0)	1 (0.1)
TOTAL	755	1235	1990	537	1235	1772

Supplementary Table 2: Bayesian False-Discovery Probabilities for Ovarian Cancer GWAS SNPs in women of African ancestry

Subtype	Nearest Gene	SNP ID (Effect / other allele)	OR (95% CI)	P-value	BFDP _{1/1K}	BFDP _{1/10K}
EOC	<i>AKR1C3</i>	rs4525119 (T/C)	0.70 (0.61-0.81)	4.9 x 10 ⁻⁷	0.08	0.49
	<i>LOC101927394</i>	rs7643459* (T/G)	1.40 (1.22-1.60)	8.4 x 10 ⁻⁷	0.05	0.33
	<i>UGT2A2</i>	rs4286604 (A/G)	0.69 (0.59-0.80)	8.5 x 10 ⁻⁷	0.05	0.34
	<i>WWC1</i>	rs142091544 (T/C)	3.22 (2.02-5.13)	9.4 x 10 ⁻⁷	0.08	0.47
HGSOC	<i>FST</i>	rs37792 (G/A)	0.65 (0.55-0.76)	6.0 x 10 ⁻⁸	0.004	0.04
	<i>MAGEC1</i>	rs57403204 (G/A)	2.62 (1.83-3.76)	1.7 x 10 ⁻⁷	0.01	0.13
	<i>LOC105376360</i>	rs79079890 (G/T)	3.20 (2.05-4.99)	3.0 x 10 ⁻⁷	0.03	0.25
	<i>PRPSAP1</i>	rs66459581 (A/AC)	1.63 (1.35-1.97)	5.1 x 10 ⁻⁷	0.02	0.19
	<i>GABRG3</i>	rs116046250 (G/T)	2.95 (1.92-4.54)	8.7 x 10 ⁻⁷	0.07	0.44
	<i>LOC105377300 / GK2</i>	rs192876988 (C/T)	3.01 (1.94-4.68)	9.2 x 10 ⁻⁷	0.08	0.47

BFDP=Bayesian false-discovery probability; the subscripted number is the level of prior probability

Supplementary Table 3: Genes targeted for eQTL analysis within the region of ten EOC- and HGSOC-associated SNPs

Subtype	SNP ID	Build 37 Chr:Pos	Nearest gene	Genes within 100kb	Genes at 100-500kb^a
EOC	rs4525119	10:5091954	<i>AKR1C3</i>	<i>AKR1C3, AKR1C1, AKR1C2</i>	
	rs7643459	3:8004828	<i>LOC101927394</i>	<i>LOC101927394</i>	
	rs4286604	4:70442165	<i>UGT2A2</i>	<i>UGT2B4, UGT2A2, UGT2A1</i>	
	rs142091544	5,167714000	<i>WWC1</i>	<i>WWC1, TENM2</i>	
	rs37792	5:52644647	<i>FST</i>		<i>ITGA1, ITGA2, FST, NDUFS4</i>
HGSOC	rs57403204	X:141078552	<i>MAGEC1</i>	<i>MAGEC1, MAGEC3</i>	
	rs79079890	10:3684148	<i>LOC105376360</i>	<i>LOC105376360</i>	
	rs66459581	17:74355264	<i>PRPSAP1</i>	<i>PRPSAP1, UBALD2, QRICH2, U6, SPHK1, UBE2D, AANAT</i>	
	rs116046250	15:27231950	<i>GABRG3</i>	<i>GABRG3, GABRB3, GABRA6, AK124673</i>	
	rs192876988	4:80297251	<i>GK2</i>	<i>GK2, NAA11, LOC100505875</i>	

^aGenes in the 100-500kb range are reported and considered in eQTL analysis only for variants with no genes within 100kb.

Supplementary Table 4: Summary of genetic association for selected SNPs identified in GWAS of EOC and HGSOC with breast cancer in African American individuals from the AABC study

Nearest Gene	SNP ID (Effect / Other allele)	Build 37 Chr:Pos	EAF	Breast cancer - all		ER positive		ER negative	
				OR (95% CI)	P-value	OR (95% CI)	P-value	OR (95% CI)	P-value
<i>AKR1C3</i>	rs4525119 (T/C)	10:5091954	0.328	1.07 (0.99,1.16)	0.098	1.02 (0.93,1.13)	0.621	1.11 (1.00,1.24)	0.058
<i>LOC101927394</i>	rs7643459 (T/G)	3:8004828	0.377	1.05 (0.97,1.13)	0.232	1.02 (0.93,1.12)	0.622	1.13 (1.01,1.26)	0.029
<i>UGT2A2</i>	rs4286604 (A/G)	4:70442165	0.279	0.94 (0.86,1.02)	0.142	0.93 (0.84, 1.04)	0.205	0.96 (0.85,1.09)	0.551
<i>WWC1</i>	rs142091544 (T/C)	5:167714000	0.040	1.07 (0.87, 1.31)	0.530	0.87 (0.67, 1.14)	0.314	1.55 (1.19, 2.02)	0.001
<i>FST</i>	rs37792 (G/A)	5:52644647	0.341	0.96 (0.89, 1.04)	0.424	0.97 (0.88,1.07)	0.578	0.97 (0.87, 1.09)	0.621
<i>MAGEC1</i>	rs57403204 (G/A)	X:141078552	0.051	0.93 (0.77, 1.12)	0.424	0.89 (0.71, 1.12)	0.329	0.97 (0.74, 1.25)	0.813
<i>LOC105376360</i>	rs79079890 (G/T)	10:3684148	0.035	1.22 (0.99,1.50)	0.066	1.21 (0.95,1.55)	0.125	1.12 (0.83,1.52)	0.449
<i>PRPSAP1</i>	rs66459581 (A/AC)	17:74355264	0.228	1.01 (0.92,1.10)	0.890	0.89 (0.80,1.00)	0.054	1.12 (0.99,1.28)	0.081
<i>GABRG3</i>	rs116046250 (G/T)	15:27231950	0.045	0.87 (0.71,1.06)	0.176	0.88 (0.69,1.12)	0.306	0.83 (0.62,1.10)	0.195
<i>LOC105377300</i> <i>/GK2</i>	rs192876988 (C/T)	4:80297251	0.040	1.19 (0.96,1.47)	0.105	1.32 (1.03,1.69)	0.027	1.02 (0.75,1.39)	0.883

SNP: single nucleotide polymorphism; EAF: effect allele frequency; OR: odds ratio; CI: confidence interval

Supplementary Table 5: Summary of genetic association for selected SNPs identified in GWAS of EOC and HGSOC with prostate cancer in African American individuals from the AAPC study

Nearest Gene	SNP ID (Effect / Other allele)	Build 37 Chr:Pos	EAF	OR (95% CI)	P-value
<i>AKR1C3</i>	rs4525119 (T/C)	10:5091954	0.328	1.03 (0.97, 1.10)	0.304
<i>LOC101927394</i>	rs7643459 (T/G)	3:8004828	0.371	1.07 (1.01, 1.13)	0.034
<i>UGT2A2</i>	rs4286604 (A/G)	4:70442165	0.264	1.08 (1.01, 1.15)	0.025
<i>WWC1</i>	rs142091544 (T/C)	5:167714000	0.036	1.11 (0.94, 1.32)	0.197
<i>FST</i>	rs37792 (G/A)	5:52644647	0.325	0.99 (0.93, 1.03)	0.685
<i>MAGEC1</i>	rs57403204 (G/A)	X:141078552	0.056	0.98 (0.89, 1.09)	0.754
<i>LOC105376360</i>	rs79079890 (G/T)	10:3684148	0.037	0.96 (0.82, 1.13)	0.646
<i>PRPSAP1</i>	rs66459581 (A/AC)	17:74355264	0.230	1.03 (0.96, 1.11)	0.363
<i>GABRG3</i>	rs116046250 (G/T)	15:27231950	0.042	0.93 (0.80, 1.08)	0.365
<i>LOC105377300</i> <i>/ GK2</i>	rs192876988 (C/T)	4:80297251	0.043	0.95 (0.81, 1.12)	0.567

SNP: single nucleotide polymorphism; EAF: effect allele frequency; OR: odds ratio; CI: confidence interval

Supplementary Table 6: Summary of results for fine mapping in African ancestry women of loci previously identified in GWAS of European ancestry women

Locus	SNP ID	Build 37 Chr:Pos	Nearest Gene	Phenotype	EOC			HGSC ^a		
					Number of SNPs Plotted	Minimum SNP position in region	Minimum SNP P-value	Number of SNPs Plotted	Minimum SNP position in region	Minimum SNP P-value
Confirmed SNPs in European ancestry OncoArray meta-analysis										
1p34.3	rs58722170	1:38096421	<i>RSPO1</i>	Serous	3078	chr1:37917469	2.91E-04	2685	chr1:37917469	3.38E-04
2q14.1	rs752590	2:113972945	<i>PAX8</i>	Mucinous	3615	chr2:114298849	2.31E-03	--	--	--
2q31.1	rs711830	2:177037311	<i>HOXD3</i>	Mucinous	3171	chr2:1177037311	2.23E-03	--	--	--
2q31.1	rs6755777	2:177043226	<i>HAGLR</i>	Serous	3175	chr2:177326682	2.23E-03	2775	chr2:177442640	2.49E-03
3q25.31	rs62274041	3:156435640	<i>TIPARP</i>	HGSC	3204	chr3:156252180	2.01E-03	2863	chr3:156204177	2.37E-03
5p15.33	rs10069690	5:1279790	<i>TERT</i>	Serous	5037	chr5:949207	9.57E-04	4497	chr5:892204	7.97E-04
5p15.33	rs7705526	5:1285974	<i>TERT</i>	Serous borderline	5005	chr5:949207	9.57E-04	4464	chr5:892204	7.97E-04
8q21.13	rs76837345	8:82668818	<i>CHMP4C</i>	HGSC	4045	chr8:82866267	1.44E-05 ^c	3523	chr8:82866267	3.98E-06 ^b
8q24.21	rs1400482	8:128529685	<i>LINC00824</i>	Serous	4414	chr8:128619531	3.51E-04	3897	chr8:128762529	1.86E-03
9p22.2	rs10962692	9:16915874	<i>BNC2</i>	HGSC	5248	chr9:16978052	2.67E-05 ^c	4746	chr9:16986321	5.57E-05
9q34.2	rs8176685	9:136138766	<i>ABO</i>	HGSC	3968	chr9:136075407	5.07E-04	3472	chr9:136267149	3.17E-04
10p12.31	rs144962376	10:21878832	<i>MLLT10</i>	Serous	2514	chr10:21978590	4.13E-03	2162	chr10:22035324	7.73E-03
17q12	rs7405776	17:36093022	<i>HNF1B</i>	Serous	2787	chr17:36195231	5.44E-03	2324	chr17:36113300	7.82E-04
17q12	rs11651755	17:36099840	<i>HNF1B</i>	Clear cell	2778	chr17:36195231	5.44E-03	--	--	--
17q21.31	rs7207826	17:46500673	<i>SKAP1</i>	Serous	2827	chr17:46807761	6.43E-04	2572	chr17:46215732	8.18E-04
17q21.32	rs1879586	17:43567337	<i>PLEKHM1</i>	HGSC	3735	chr17:43954416	1.31E-04	3370	chr17:43945726	1.44E-04
19p13.11	rs4808075	19:17390291	<i>BABAM1</i>	HGSC	9100	chr19:17395213	1.77E-04	4077	chr19:17088458	3.07E-04
19q11.21	rs688187	19:39732752	<i>IFNL3</i>	Mucinous	8360	chr19:39684764	1.21E-04	--	--	--
Newly identified SNPs in European ancestry OncoArray meta-analysis										
2q13	rs2165109	2:111818658	<i>ACOXL</i>	HGSC	2172	chr2:111595642	6.87E-03	1951	chr2:111832215	1.47E-02
3q22.3	rs112071820	3:138849110	<i>BPESC1</i>	Mucinous	2922	chr3:138839642	3.34E-05 ^c	--	--	--
3q28	rs9870207	3:190525516	<i>GMNC</i>	Serous borderline, LGSC	4647	chr3:190657915	3.73E-03	4081	chr3:190839089	3.34E-03
4q32.2	rs13113999	4:167187046	<i>TLL1</i>	Serous borderline	4879	chr4:167492545	4.71E-03	4252	chr4:166876033	8.01E-04
5q12.3	rs555025179	5:66121089	<i>MAST4</i>	Endometrioid	3720	chr5:65907851	5.91E-03	--	--	--
8q21.11	rs150293538	8:77320354	<i>LINC01111</i>	Serous borderline, LGSC	3305	chr8:77354021	1.17E-04	2883	chr8:77320354	2.01E-04
8q24.21	rs9886651	8:128817883	<i>PVT1</i>	HGSC	4449	chr8:129036159	2.67E-04	3962	chr8:129093793	1.52E-03
9q31.1	rs320203	9:104943226	<i>LOC105376188</i>	Mucinous	4927	chr9:105237170	1.49E-03	--	--	--
10q24.33	rs7902587	10:105694301	<i>LOC102724351</i>	Serous borderline, LGSC	3192	chr10:105375295	3.40E-05 ^c	2852	chr10:105300054	1.03E-03
12q24.31	rs7953249	12:121403724	<i>HNF1A-AS1</i>	HGSC	3680	chr12:121113096	6.90E-05	3272	chr12:121113096	2.51E-05 ^c
18q11.2	rs8098244	18:21405553	<i>LAMA3</i>	Serous borderline, LGSC	2685	chr18:21555816	1.84E-05 ^b	2431	chr18:21555816	6.19E-05
22q12.1	rs6005807	22:28934313	<i>TTC28/LOC101929594</i>	HGSC	2513	chr22:29126617	1.27E-02	2066	chr22:29073209	1.56E-02

EOC: epithelial ovarian cancer; HGSC: high-grade serous ovarian cancer; SNP: single nucleotide polymorphism; Chr: chromosome; Pos: position; LGSC: low-grade serous ovarian cancer.

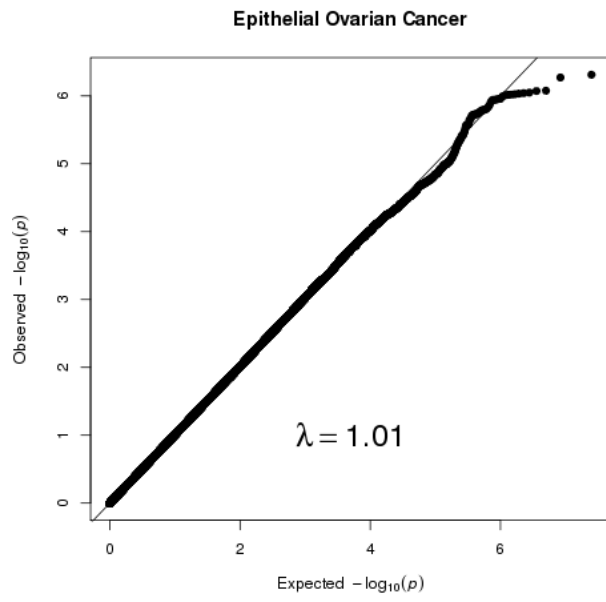
^aFine mapping among HGSC was completed only for those SNPs associated with serous ovarian cancer.^bSignificant at the Bonferroni threshold (0.05/number of SNPs plotted).^cSignificant at the suggestive threshold (0.05/(number of SNPs plotted/3)).

Supplementary Table 7: Summary of results for fine mapping in European ancestry women of loci identified in our GWAS of African ancestry women

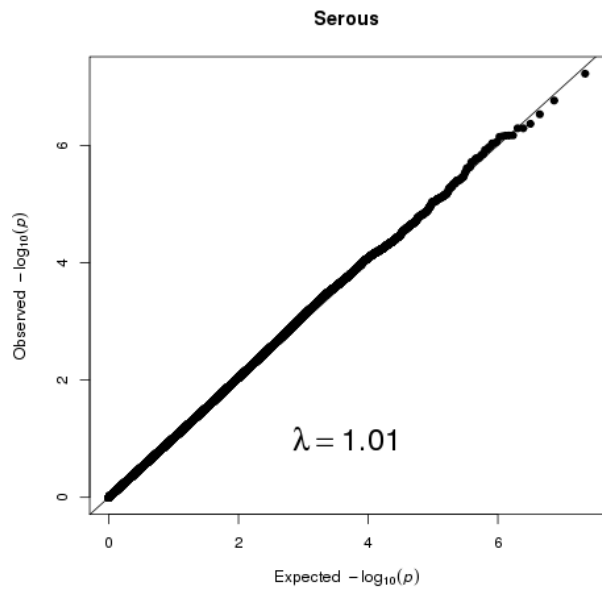
Gene	SNP ID	Build 37 Chr:Pos	EOC			HGSOC		
			Number of SNPs plotted	Minimum SNP position in region	Min SNP p-value	Number of SNPs plotted	Minimum SNP position in region	Min SNP p-value
<i>AKR1C3</i>	rs4525119	10:5091954	6105	chr10:5341275	2.44E-03	--	--	--
<i>LOC101927394</i>	rs7643459	3:8004828	5466	chr3:8268351	1.12E-03	--	--	--
<i>UGT2A2</i>	rs4286604	4:70442165	5542	chr4:70592790	1.14E-05 ^a	--	--	--
<i>WWC1</i>	rs142091544	5:167714000	3761	chr5:167857657	1.74E-04	--	--	--
<i>FST</i>	rs37792	5:52644647	--	--	--	4416	chr5:52332701	3.94E-05
<i>MAGEC1</i>	rs57403204	X:141078552	--	--	--	3389	chrX:141078552	1.78E-04
<i>LOC105376360</i>	rs79079890	10:3684148	--	--	--	4899	chr10:3463140	2.24E-04
<i>PRPSAP1</i>	rs66459581	17:74355264	--	--	--	4025	chr17:74420211	3.74E-04
<i>GABRG3</i>	rs116046250	15:27231950	--	--	--	3885	chr15:27240688	5.16E-04
<i>LOC105377300/GK2</i>	rs192876988	4:80297251	--	--	--	3443	chr4:80297251	5.76E-04

^aSignificant at the suggestive threshold (0.05/(number of SNPs plotted/3)).

(a)



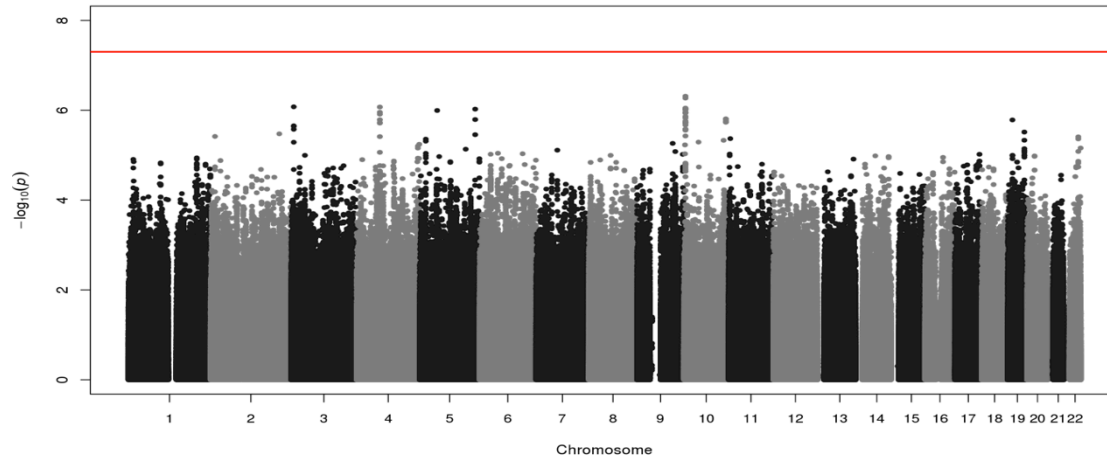
(b)



Manichaikul et al., Supplementary Figure 1

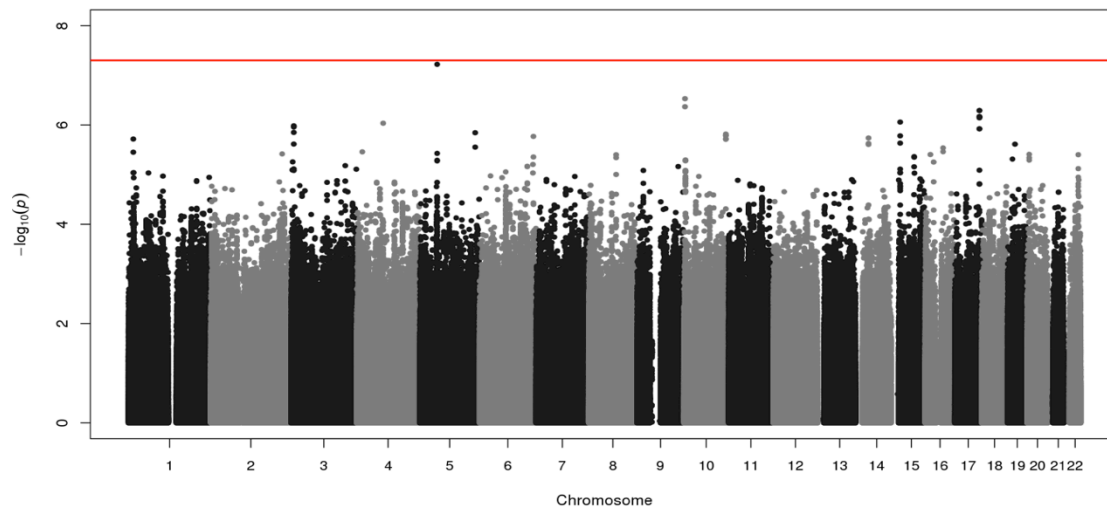
(a)

Epithelial Ovarian Cancer



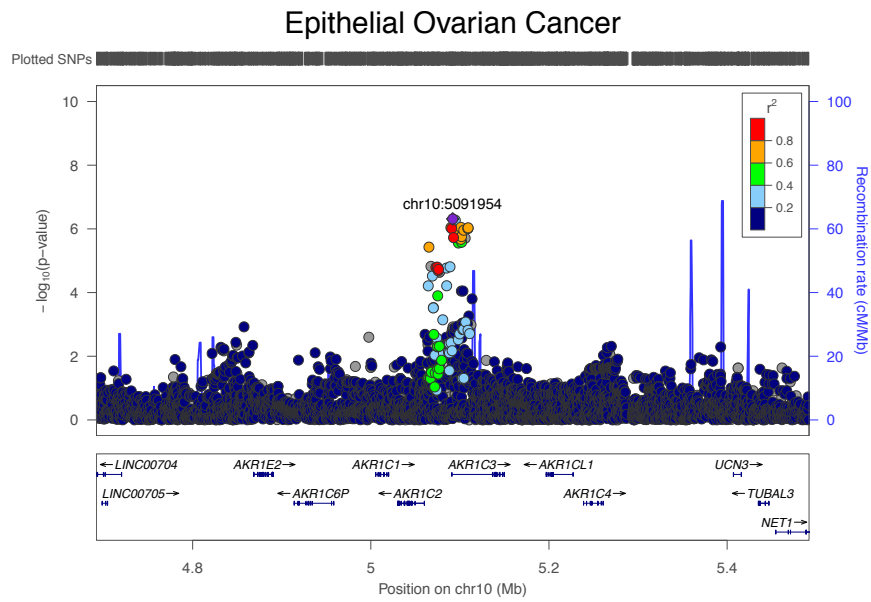
(b)

Serous



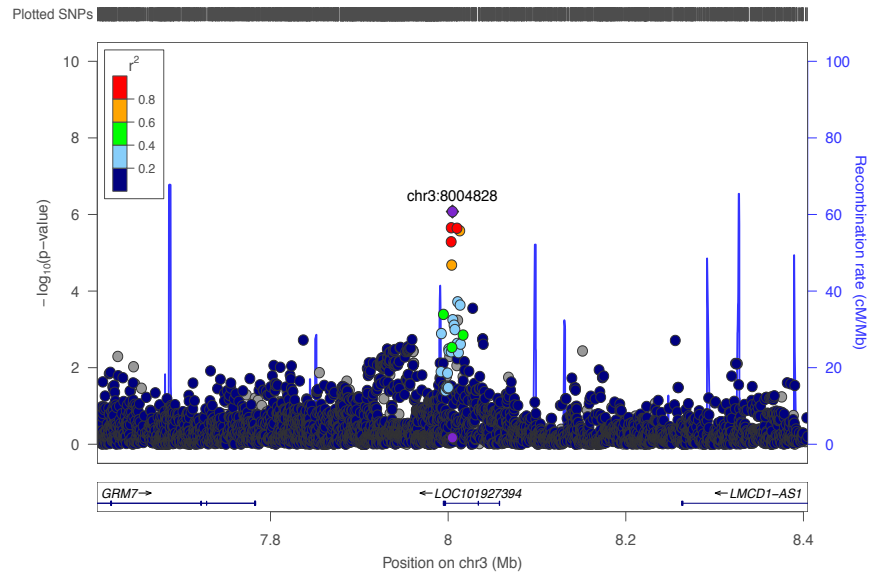
Manichaikul et al., Supplementary Figure 2

(a)

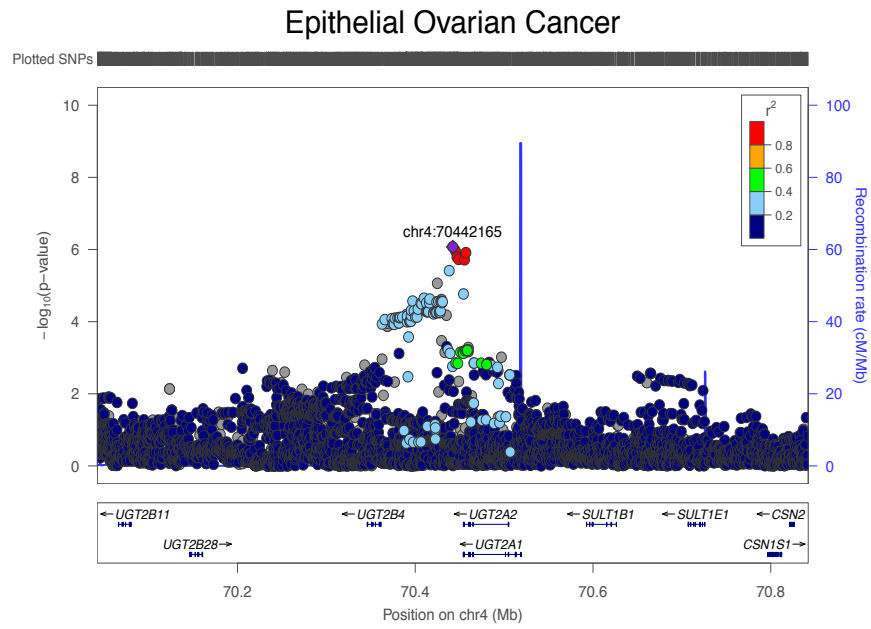


(b)

Epithelial Ovarian Cancer

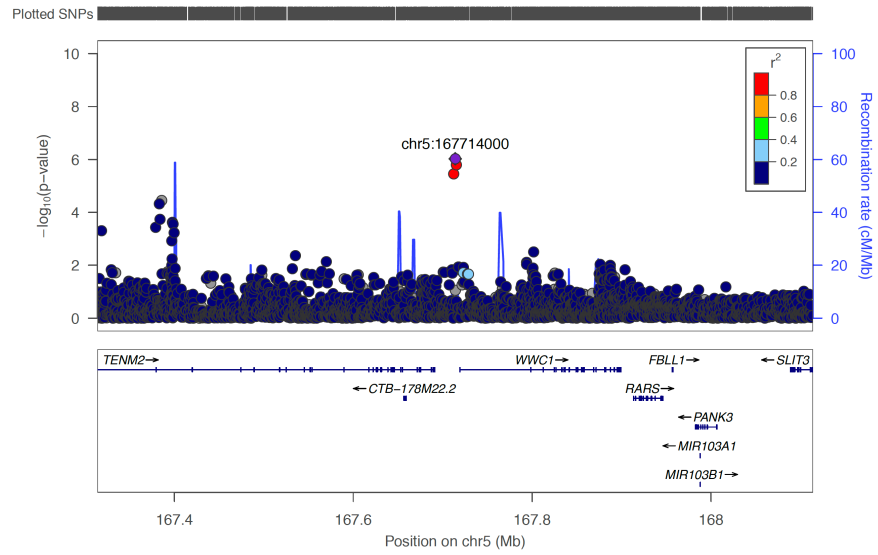


(c)



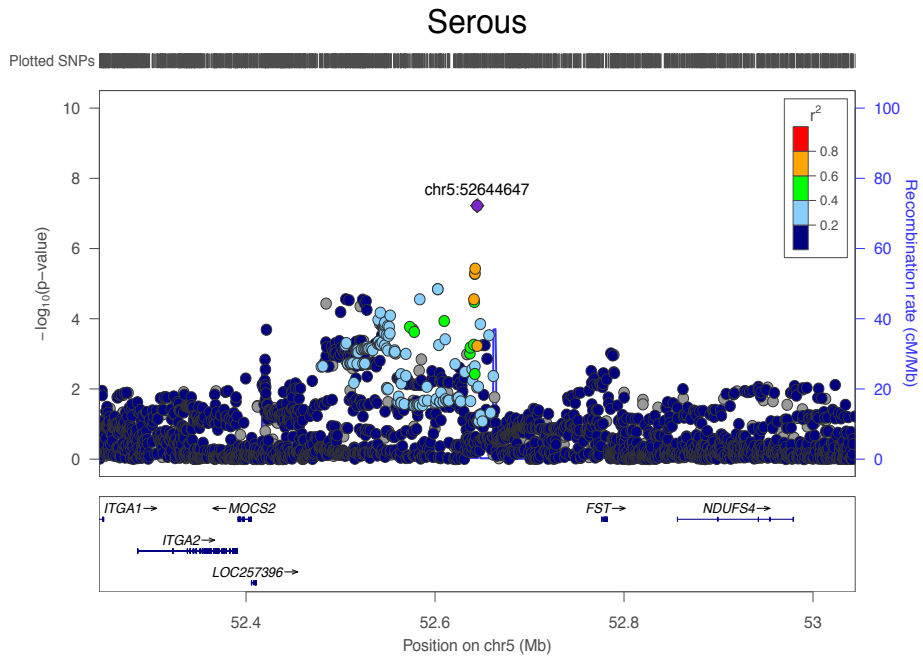
(d)

Epithelial Ovarian Cancer

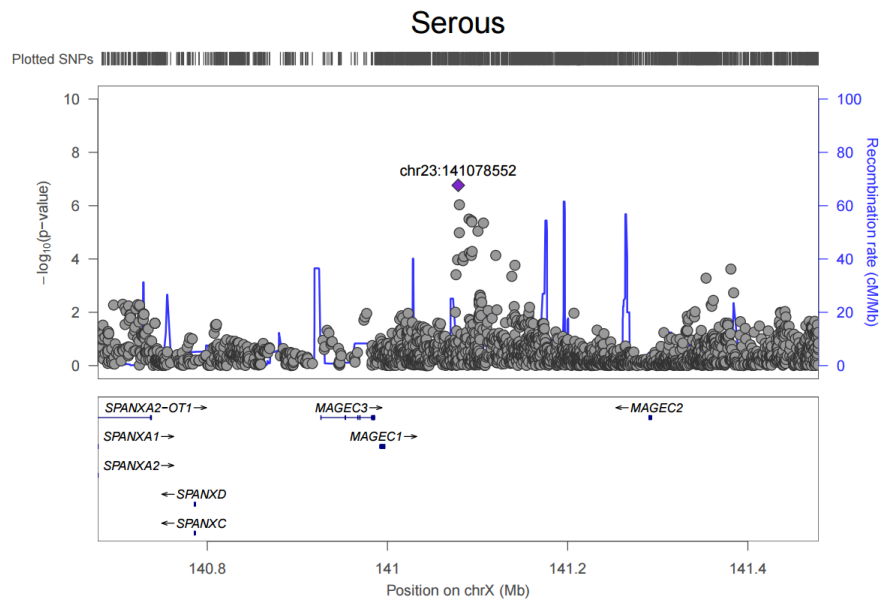


Manichaikul et al., Supplementary Figure 3

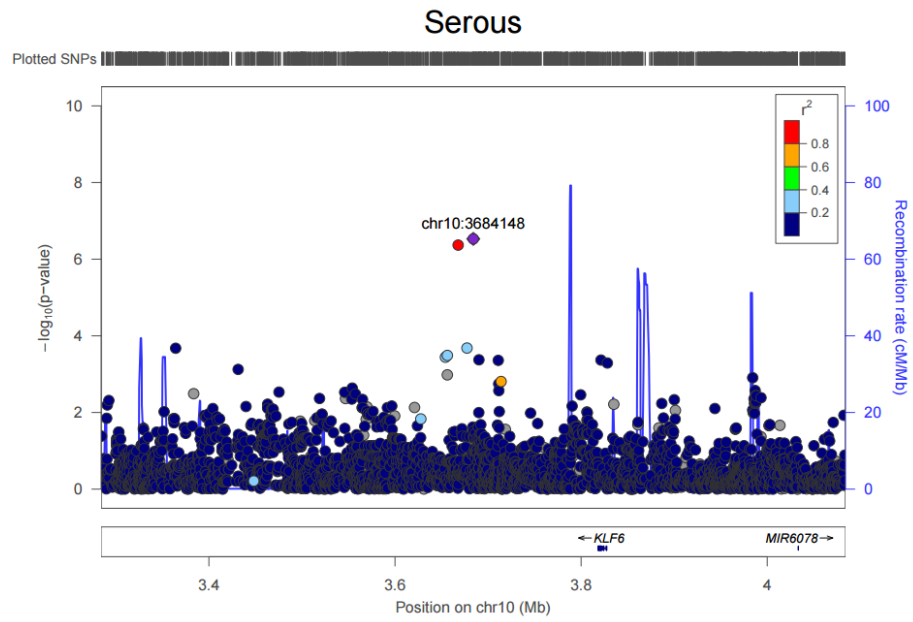
(a)



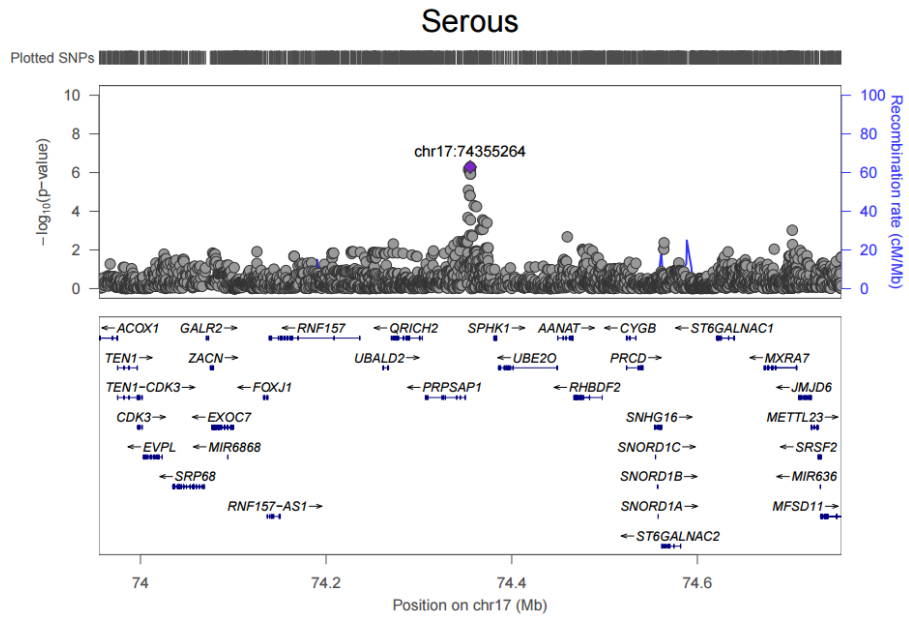
(b)



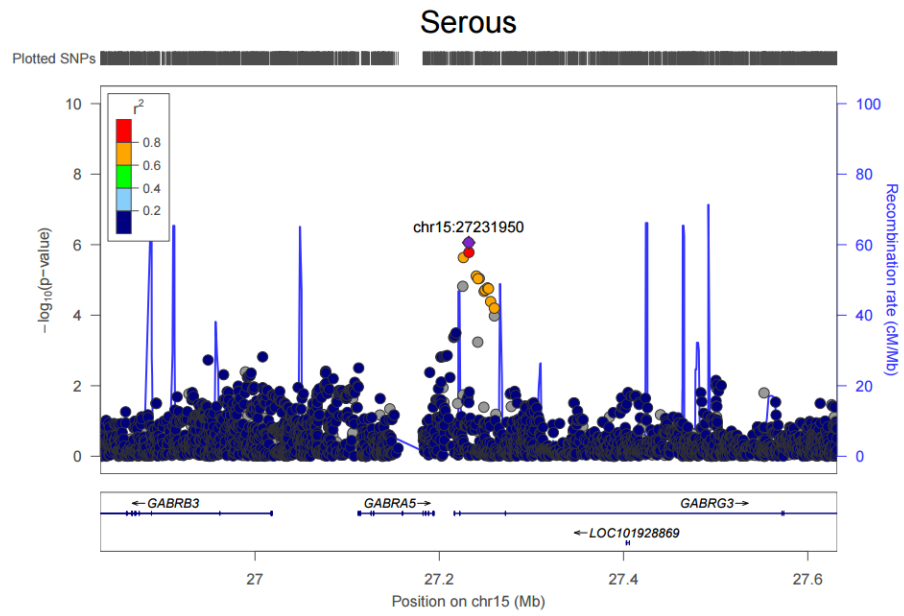
(c)



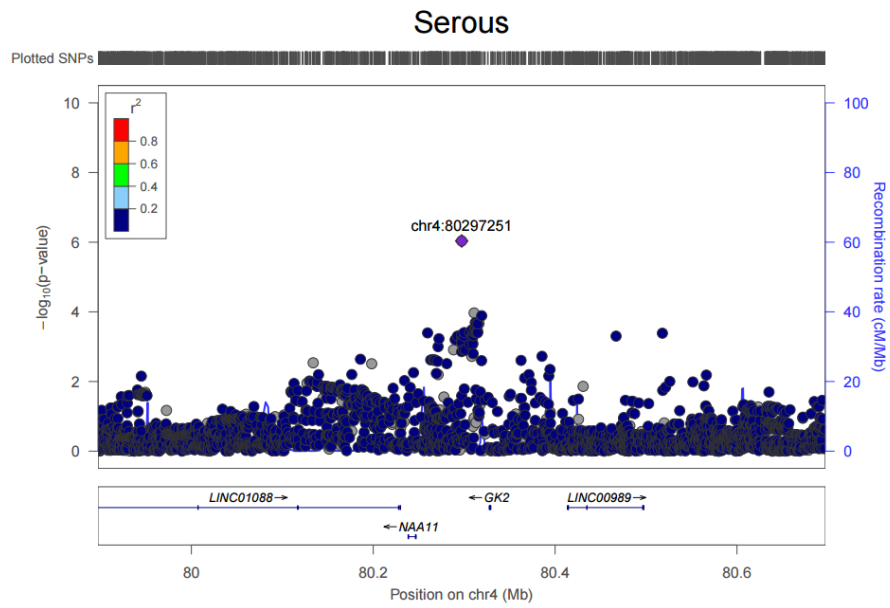
(d)



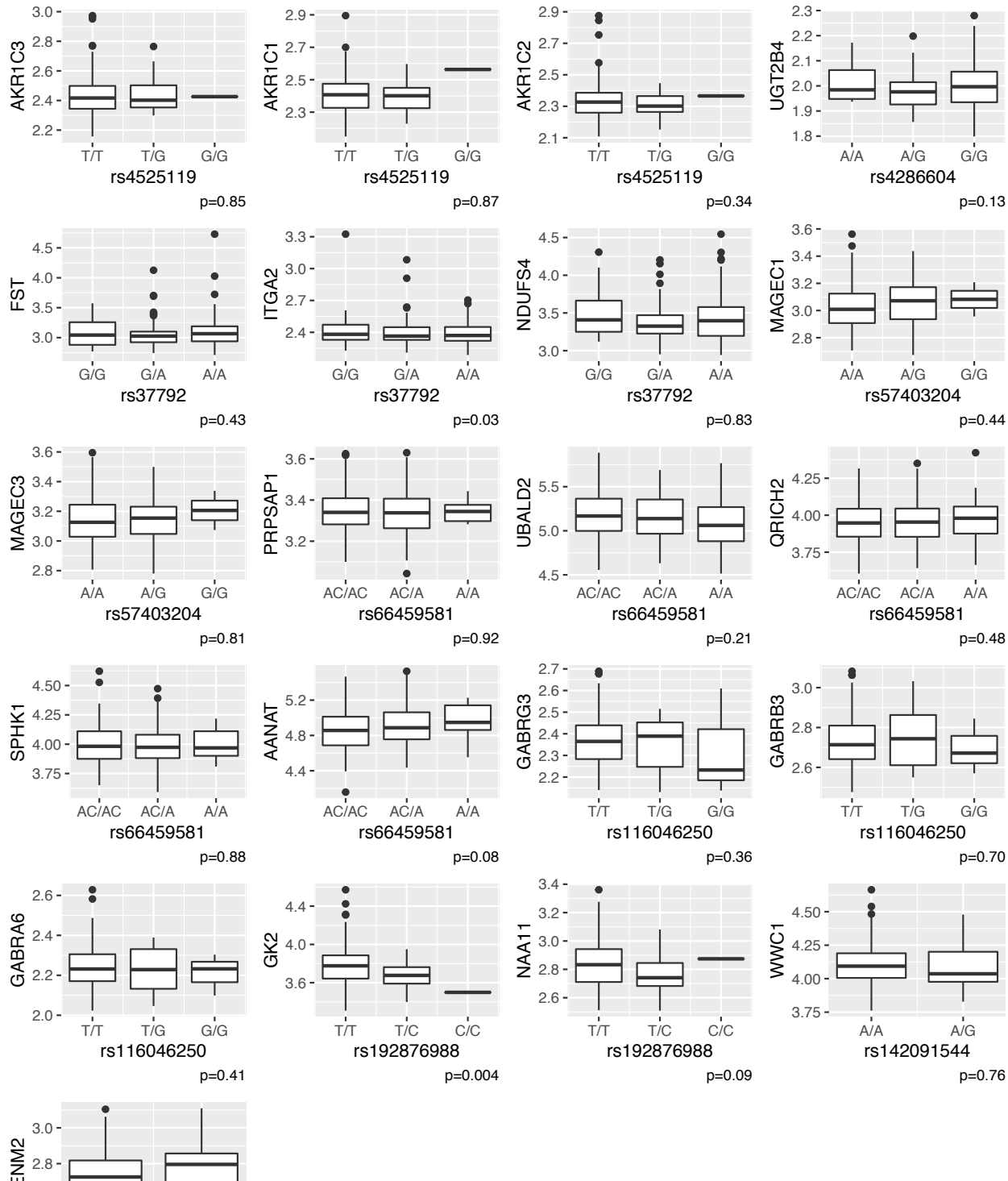
(e)



(f)



Manichaikul et al., Supplementary Figure 4



Manichaikul et al., Supplementary Figure 5