

Biodegradation of thiocyanate by a native groundwater microbial consortium

Liam P. Spurr¹, Mathew P. Watts¹, Han M. Gan² and John W. Moreau¹

¹ School of Earth Sciences, University of Melbourne, Parkville, Australia

² School of Life and Environmental Sciences, Deakin University, Waurn Ponds, Australia

ABSTRACT

Gold ore processing typically generates large amounts of thiocyanate (SCN^-)-contaminated effluent. When this effluent is stored in unlined tailings dams, contamination of the underlying aquifer can occur. The potential for bioremediation of SCN^- -contaminated groundwater, either in situ or ex situ, remains largely unexplored. This study aimed to enrich and characterise SCN^- -degrading microorganisms from mining-contaminated groundwater under a range of culturing conditions. Mildly acidic and suboxic groundwater, containing $\sim 135 \text{ mg L}^{-1} \text{ SCN}^-$, was collected from an aquifer below an unlined tailings dam. An SCN^- -degrading consortium was enriched from contaminated groundwater using combinatory amendments of air, glucose and phosphate. Biodegradation occurred in all oxic cultures, except with the sole addition of glucose, but was inhibited by NH_4^+ and did not occur under anoxic conditions. The SCN^- -degrading consortium was characterised using 16S and 18S rRNA gene sequencing, identifying a variety of heterotrophic taxa in addition to sulphur-oxidising bacteria. Interestingly, few recognised SCN^- -degrading taxa were identified in significant abundance. These results provide both proof-of-concept and the required conditions for biostimulation of SCN^- degradation in groundwater by native aquifer microorganisms.

Subjects Bioengineering, Microbiology, Environmental Contamination and Remediation

Keywords Bioremediation, Thiocyanate, Mining, Contamination, Microorganisms, Groundwater, Geomicrobiology, Sulphurs-oxidation

Submitted 30 December 2017

Accepted 20 January 2019

Published 26 March 2019

Corresponding author

John W. Moreau,
jmoreau@unimelb.edu.au

Academic editor

Kristen DeAngelis

Additional Information and
Declarations can be found on
page 13

DOI 10.7717/peerj.6498

© Copyright

2019 Spurr et al.

Distributed under

Creative Commons CC-BY 4.0

OPEN ACCESS

INTRODUCTION

Thiocyanate (SCN^-) is a toxic contaminant in industrial wastewater streams associated with gold mining (Stott *et al.*, 2001; Akcil, 2003; Kenova, Kormienko & Drozdov, 2010), steel production (Lay-Son & Drakides, 2008), photofinishing (Shukla *et al.*, 2004), electroplating (Aguirre *et al.*, 2010), herbicide and insecticide production (Hughes, 1975) and coal coking (Dash, Gaur & Balomajumder, 2009; Gould *et al.*, 2012). In gold ore processing, SCN^- is generated through reaction of cyanide (CN^-) with sulphide minerals and other intermediate valence sulphur species (Akcil, 2003). Most mine operators promote this reaction, as CN^- is even more toxic than SCN^- (Ingles & Scott, 1987). However, SCN^- remains an undesirable end-product that must be removed for safe storage or disposal of waste water.

The waste products of gold ore processing are typically stored for indefinite time periods within large tailings storage facilities (TSFs). Many TSFs were historically unlined, such

that tailings-derived SCN^- -leachate flows directly into the underlying water table. Although hydrologic recirculation of SCN^- -contaminated groundwater to the TSF has been used to retard SCN^- migration, this strategy is unsustainable both as an environmental or an economical long-term solution for aquifer remediation.

Thiocyanate remediation technologies have drawn recent interest, due to the environmental stability (Gould *et al.*, 2012) and potential toxicity of SCN^- to aquatic life, with an LC_{50} for *Daphnia magna* of 0.55–33.47 mg L^{-1} (Watson & Maly, 1987). Abiotic SCN^- remediation techniques typically involve chemical oxidation (e.g. SO_2/air , peroxide and Caro's acid) (Wilson & Harris, 1960; Breuer, Jeffrey & Meakin, 2011) or adsorption/separation methods (Aguirre *et al.*, 2010). These approaches are often expensive to implement, and may produce sulphuric or nitric acid waste streams (Akci, 2003; Dash, Gaur & Balomajumder, 2009). Bioremediation of SCN^- would present a more cost-effective alternative (Akci, 2003), either via (1) stimulation of SCN^- -degrading microorganisms within extracted groundwater, prior to re-injection into the contaminated aquifer; or (2) promotion of in situ biodegradation within the aquifer under ambient conditions. The former approach, likely implemented in the form of a bioreactor, has gained much attention for treating SCN^- containing effluent streams (Whitlock, 1990; Van Zyl, Harrison & Van Hille, 2011; Villemur *et al.*, 2015), while in situ approaches remain largely unexplored.

Thiocyanate-degrading microorganisms occupy a diverse range of environments, including activated sludge (Van Zyl, Harrison & Van Hille, 2011), soils (Vu, Mu & Moreau, 2013) and soda lakes (Sorokin *et al.*, 2004, 2014). SCN^- -degraders can use SCN^- as a source of sulphur, carbon, nitrogen and energy (Sorokin *et al.*, 2001; Ebbs, 2004; Grigor'eva *et al.*, 2006), producing sulphate and ammonia, the latter of which can be reduced via denitrification to nitrogen gas. These microorganisms exhibit both heterotrophic (Vu, Mu & Moreau, 2013) and autotrophic metabolisms (Sorokin *et al.*, 2001, 2004; Bezsudnova *et al.*, 2007; Huddy *et al.*, 2015; Watts *et al.*, 2017), with the former typically using SCN^- as a nitrogen source and the latter oxidizing sulphur as an energy source. Much work has been done to understand the complex community interactions in engineered systems treating wastewater (Lee *et al.*, 2008; Kantor *et al.*, 2015, 2017). Most commercial SCN^- bioremediation systems use organic carbon amendments to treat contaminated slurry waste streams, while no previous studies have focussed on groundwater as inoculum and simple inorganic amendments.

In this study, we hypothesised that SCN^- -contaminated groundwater could be enriched for microorganisms capable of biodegrading SCN^- if supplemented with a primary limiting nutrient: bioavailable phosphate. We experimentally determined the potential for SCN^- biodegradation by the groundwater microbiome, and characterised its diversity and phylogeny. Our approach involved (1) enrichment of SCN^- -degrading microorganisms from contaminated groundwater, (2) culturing experiments involving amendments of dissolved organic carbon (DOC) (glucose), PO_4^{3-} and NH_4^+ ; and (3) Illumina MiSeq sequencing of 16S and 18S rRNA genes from the SCN^- -degrading microbial consortium. As SCN^- potentially provides carbon and nitrogen to microorganisms, we quantified the extent to which external amendments of NH_4^+ or

DOC to groundwater impacted SCN^- biodegradation rates (Paruchuri, Shivaraman & Kumaran, 1990). We also measured the impact of a bioavailable PO_4^{3-} amendment to groundwater-derived mixed cultures on SCN^- -biodegradation rates, expanding on similar experiments in mine tailings water (Watts et al., 2017). The motivation for using groundwater-derived microbial communities was to explore the potential for bioremediating SCN^- in mining-impacted aquifers or extracted bore waters. Our results present new information and insights to increase efficiency and reduce costs for SCN^- treatment by the mining industry worldwide.

MATERIALS AND METHODS

Groundwater sampling and storage

Mining-contaminated groundwater was extracted from a monitoring well located adjacent to a TSF at an operational gold mine in central Victoria, using a low flow pump. The well was screened in weathered granodiorite and schist, at a depth of 55 m below the surface. A sample of approximately 15 L was extracted, sealed and stored on ice until it was returned to the lab the next day, where it was refrigerated at 4 °C until use. The groundwater was used for enrichments within 3 days of sampling, while the remaining groundwater (with no trace metals or vitamins added) was used as a filter-sterilised medium for further culturing transfers, having been stored for up to 10 weeks in the dark at 4 °C by the end of the experiments. The chemistry of the groundwater is monitored frequently at the site and is typically moderately saline (TDS $11,425 \pm 457$), has a temperature of $15.2 \text{ °C} \pm 1.6$, pH of 6.6–6.8, SCN^- concentrations of 500–1,000 mg L^{-1} and free CN^- concentrations of $<0.03 \text{ mg L}^{-1}$ (Table A1). We thank Stawell Gold Mine for access to the field site and historical monitoring data (no permit number issued).

Groundwater geochemical analyses

At the time of sampling, a flow cell was used to determine the pH, E_H and DO measurements taken with a YSI Professional Plus™ multi-parameter meter with calibrated probes. The groundwater was also analysed by colorimetry for SCN^- (Sörbo (1957) and NH_4^+ upon return to the laboratory, using the ferric-nitrate method (Eaton & Franson, 2005) and the salicylate-nitroprusside method (Baethgen & Alley, 1989), respectively. During laboratory-based experiments, pH was measured using a Thermo Orion 5 Star Plus™ Electrolyte Analyser and calibrated probes. Growth of the culture was monitored by tracking optical density at 600 nm (OD_{600}). All colorimetric analyses were conducted using a Hach DR2800™ Portable Spectrophotometer with standard solutions.

Aerobic and anaerobic enrichment culturing experiments

Groundwater was incubated under oxic and anoxic conditions, with various nutrient amendments, to enrich an SCN^- -degrading culture. The oxic replicates were made by decanting groundwater (100 mL) under sterile conditions into triplicate autoclaved 250 mL conical flasks, sealed with a cotton wool bung and foil. Anoxic cultures were prepared by adding 30 mL of groundwater to 50 mL serum bottles sealed with rubber stoppers and aluminium crimps, and degassed using pressurised nitrogen gas.

Both the oxic and anoxic cultures were further amended with additions of either 5 g L^{-1} DOC (as glucose) or $50 \text{ mg L}^{-1} \text{ PO}_4^{3-}$ (as NaH_2PO_4), or both, alongside no-addition controls. All incubations were maintained in the dark on a rotary shaker at $30 \text{ }^\circ\text{C}$ and 120 rpm. The SCN^- concentration was monitored to determine if degradation was occurring; in cases where complete or near complete SCN^- removal was noted, this enrichment provided inoculum for further culturing using filter sterilised ($0.22 \text{ }\mu\text{m}$ filter) groundwater as the medium. The amendments that produced a stable SCN^- degrading culture upon further culturing were selected for further study.

Oxic cultures were sampled by extracting two mL with a sterile syringe in a biosafety hood to ensure sterility. Anoxic cultures were sampled by extracting two mL of the culture with a N_2 -degassed sterile syringe and needle, sampled through the rubber stopper. Half of the sample was passed through a $0.22 \text{ }\mu\text{m}$ filter, while the other half was used for OD_{600} measurement prior to freezing at $-20 \text{ }^\circ\text{C}$. Samples for DNA sequencing were removed at late-log phase growth from microbial cultures stably degrading SCN^- after five transfers, and immediately frozen at $-80 \text{ }^\circ\text{C}$ until thawing for DNA extraction.

Culturing of a SCN^- -degrading microbial consortium from groundwater

Amendments that resulted in a groundwater culture capable of SCN^- degradation after repeated culturing were further tested. All culturing after the initial enrichment phase was performed in sterilised 250 mL conical flasks, containing 100 mL of filter-sterilised ground water, stoppered using a cotton wool bung and foil, and with previously used nutrient amendments. For transfer to fresh medium, 10% v/v of the inoculum culture was sampled in late log phase of growth and incubated on a rotary shaker (or in a static incubator, in the case of anoxic cultures) at $30 \text{ }^\circ\text{C}$ and 120 rpm in the dark. Before subsequent testing, the culture was routinely re-cultured a minimum of five times to ensure a stable microbial community had developed. To determine the behaviour of the end-product, NH_4^+ , an identical culturing experiment to those previously described was set-up and samples removed to monitor SCN^- , OD_{600} and NH_4^+ .

Biodegradation of SCN^- in the presence of ammonium

A further experiment was set up to determine the impact of NH_4^+ on SCN^- biodegradation. This experiment used the re-cultured SCN^- -degrading microbial community and was again performed using filter-sterilised ($0.22 \text{ }\mu\text{m}$ filter) groundwater from the same well.

As with previous experiments, this was performed in triplicate 250 mL conical flasks, containing 100 mL of filter-sterilised groundwater, stoppered using a cotton wool bung and foil. The flasks were amended to low (no addition), moderate (10 mg L^{-1}) and high (40 mg L^{-1}) concentrations of NH_4^+ using a filter-sterilised ($0.22 \text{ }\mu\text{m}$) concentrated $(\text{NH}_4)_2\text{SO}_4$ solution, in addition to five g L^{-1} glucose and $50 \text{ mg L}^{-1} \text{ PO}_4^{3-}$. An inoculum of the late log-phase culture was then added at 10% v/v concentration and incubated on a rotary shaker at $30 \text{ }^\circ\text{C}$ and 120 rpm in the dark.

Whole community microbial DNA extraction and Illumina MiSeq 16S and 18S rRNA gene sequencing

The triplicate samples for microbial ecology analysis were firstly removed from the -80°C freezer and thawed. The genomic DNA was then extracted with the PowerSoil DNA Isolation Kit (Mo Bio Laboratories, Inc. Carlsbad, CA, USA). The primers used for 16S and 18S rRNA gene sequencing consist of partial Illumina adapter at the 5' end. The incorporation of the second-half of the Illumina adapter and dual-index barcode was performed in another round of PCR reaction (Illumina 16S Sequencing Protocol). The 16S and 18S rRNA gene amplicon sequencing (Caporaso *et al.*, 2012) was performed using on Illumina MiSeq platform (Illumina, San Diego, CA, USA) located at the Monash University Malaysia Genomics Facility (2×250 bp run configuration).

The 16S rRNA gene was amplified by PCR using primers targeting the V3-V4 region of the 16S gene: Forward 5'-CCTACGGGNGGCWGCAG-3' and Reverse 5'-GACTACHVGGGTATCTAATCC-3' (Klindworth *et al.*, 2013). High-fidelity PCR was performed on one μL of each DNA sample using 0.5 μL of Illumina-compatible universal primers, under the following thermal cycler conditions: initial denaturation step (98°C for 30 s), followed by 25 cycles of denaturation (98°C for 10 s), annealing (60°C for 30 s) and extension (65°C for 60 s), followed by a final extension step (65°C for 120 s). The product was further purified with 20 μL of Ampure 0.8 \times , and washed with 200 μL of 80% ethanol and eluted in 50 μL for subsequent index ligation using Nextera XT Index primers i7 forward and i5 reverse Illumina adapters. The subsequent product was purified with 12 μL of Ampure 0.8 \times , washed with 200 μL of 80% ethanol, and eluted in 30 μL for sequencing.

The 18S rRNA gene from the genomic DNA samples was amplified using the forward primer 1391f 5'-GTACACACCGCCCGTC-3', and the reverse primer EukBr 5'-AGACAGTGATCCTTCTGCAGGTTACCTAC-3' (Amaral-Zettler *et al.*, 2009). PCR was performed with one μL of the DNA extract in the presence of 10 μM Illumina-compatible primer, under the following thermal cycler conditions; initial denaturation (98°C for 30 s), followed by 25 repetitions of denaturation (98°C for 10 s), annealing (65°C for 60 s) and extension (65°C for 120 s) and a final extension (65°C for 120 s). This PCR product was purified with 25 μL of Ampure 1 \times and washed with 200 μL of 80% ethanol, then eluted in 40 μL in preparation for index ligation, using Nextera XT Index i7 forward primer Nextera XT Index i5 reverse primer. The product was purified with 10 μL of Ampure 1, washed with 200 μL of 80% ethanol and eluted in 30 μL for 18S sequencing.

16S and 18S rRNA gene sequence analysis

Prior to any bioinformatic processing, the raw 18S and 16S rRNA gene sequences were uploaded to the National Centre for Biotechnology Information's (NCBI's) sequence read archive, with the BioProject accession number [PRJNA356784](https://www.ncbi.nlm.nih.gov/bioproject/PRJNA356784). Analysis of the 18S and 16S rRNA gene sequencing data was performed using the QIIME software package in order to determine the phylogenetic structure of the microbial community (Caporaso *et al.*, 2010a). Bases with a phred quality score of <20 , and reads that retained less than 75% of their original sequence length, were discarded. Forward and reverse reads of the 16S and 18S

rRNA genes were joined at paired ends and aligned. The sequences were demultiplexed, filtered and processed through the QIIME software package (Caporaso *et al.*, 2010a).

The 16S rRNA gene sequences were compared to those in the GreenGenes Bacterial and Archaeal 16S rRNA gene database (DeSantis *et al.*, 2006) using BLAST (Altschul *et al.*, 1990), picking operational taxonomic units (OTUs) at a 97% similarity cut-off. Representative sequences from each OTU were aligned using the PyNAST tool (Caporaso *et al.*, 2010b), and chimeric sequences were identified and removed using ChimeraSlayer (Haas *et al.*, 2011). The 18S rRNA gene sequences were assigned to OTUs via a de novo approach using USEARCH v5.2.236 (Edgar, 2010). Representative sequences from each OTU were checked for chimeric sequences, and these were removed using UCHIME v6.1.544 (Edgar *et al.*, 2011). The resulting OTUs were assigned taxonomy by comparison to the SILVA 16S/18S rRNA gene database (SILVA 119, Quast *et al.*, 2013) using Blastall v2.2.22. All OTUs that were assigned to prokaryotic taxa were then removed from the 18S rRNA gene dataset.

Operational taxonomic units representing >1% abundance were processed through the NCBI BLAST program and assigned taxonomies according to highest sequence similarity. The resulting BLAST assigned identities were compared to the taxonomic identities assigned by the GreenGenes and SILVA databases for the 16S rRNA (Table A2) and 18S rRNA sequencing (Table A3), respectively.

RESULTS

Groundwater chemistry

The geochemical conditions of the groundwater at the time of sampling are presented in Table 1. The groundwater pH was slightly acidic and contained SCN^- in addition to a small concentration of NH_4^+ . The prevailing redox conditions in the groundwater were reducing, with low oxygen levels.

Groundwater enrichment culturing experiments

During the initial enrichment experiment, no SCN^- removal was noted in the absence of oxygen, regardless of nutrient amendment (see Table 2 for initial and final SCN^- concentrations). In the oxic enrichment experiments, SCN^- removal was observed in the absence of any nutrient amendment; however, upon inoculation of this culture into filter-sterilised groundwater, no SCN^- removal was observed. The sole addition of DOC or PO_4^{3-} also resulted in SCN^- biodegradation in the initial enrichment, but when transferred into filter-sterilised groundwater, SCN^- degradation did not occur. The only condition to result in a SCN^- degrading culture, which was culturable in filter-sterilised groundwater, was the addition of DOC and PO_4^{3-} in the presence of air. Initially, complete removal of SCN^- (from approximately 130 mg L^{-1}) was achieved within 4 days, through combined addition of DOC and PO_4^{3-} . This culture was used for subsequent experiments.

SCN^- and NH_4^+ biodegradation by a consortium of groundwater microorganisms

The enriched microbial consortium, amended with DOC and PO_4^{3-} , was further investigated to determine the fate of the NH_4^+ released by SCN^- degradation.

The consortium completely degraded SCN^- in the filter-sterilised groundwater within a

Table 1 Basic groundwater chemistry data.

Groundwater chemistry	
SCN ⁻ (mg L ⁻¹)	135 ± 1.73
NH ₄ ⁺ (mg L ⁻¹)	8.9 ± 1.9
pH	6.5 ± 0.03
Dissolved O ₂ (%)	2.0 ± 0.5
E _H (mV)	-21.6 ± 2.0
Conductivity (mS cm ⁻¹)	17.64 ± 0.1
T °C	16.3 ± 0.1

Notes:

Groundwater chemistry at the time of sampling. Errors are equal to 1 standard deviation within triplicate samples of the groundwater. Full groundwater chemistry (quarterly reports) is presented in Table A1.

Table 2 Enrichment experiment results showing changes in SCN⁻ concentration.

Oxygen amendment	Nutrient amendment	SCN ⁻ initial (mg L ⁻¹)	SCN ⁻ final (18 days) (mg L ⁻¹)
Anoxic	None	131 ± 2.3	132 ± 6.0
	DOC	125 ± 8.8	132 ± 2.0
	PO ₄ ³⁻	129 ± 3.6	130 ± 9.3
	DOC, PO ₄ ³⁻	129 ± 5.3	135 ± 2.4
Oxic	None	128 ± 3.1	0.67 ± 1.2
	DOC	126 ± 2.5	5.00 ± 7.8
	PO ₄ ³⁻	131 ± 3.0	0.00 ± 0.0
	DOC, PO ₄ ³⁻	123 ± 3.1	0.33 ± 0.6

Note:

Errors are shown as 1 standard deviation within triplicate samples of each culture.

period of 50 h (Fig. 1). The initial NH₄⁺ present in the groundwater was consumed prior to any SCN⁻ removal. After this, an increase in OD₆₀₀ was noted, in tandem with the consumption of SCN⁻ and formation of NH₄⁺. The concentration of NH₄⁺ decreased to below detection after all SCN⁻ had been consumed.

Inhibition of SCN⁻ biodegradation by NH₄⁺ addition

Further experimentation was conducted to determine the effect NH₄⁺ had upon SCN⁻ biodegradation. This work revealed that low to moderate concentrations of NH₄⁺ did not inhibit biodegradation of SCN⁻ (Fig. 2). The highest NH₄⁺ concentration however, completely inhibited SCN⁻ biodegradation. SCN⁻ degradation occurring at lower NH₄⁺ concentrations only proceeded after complete NH₄⁺ removal (Fig. 3). Potentially, SCN⁻ biodegradation could have occurred more efficiently after repeated transfers to NH₄⁺-containing media, but this adaptation hypothesis was not tested in this study.

Microbial community characterisation by 16S rRNA gene sequencing

The taxonomic assignments for the 16S rRNA gene sequences, from the enriched groundwater community are given in Fig. 4A. At the phylum level, the microbial community enriched through DOC and PO₄³⁻ addition and exposure to air in the groundwater

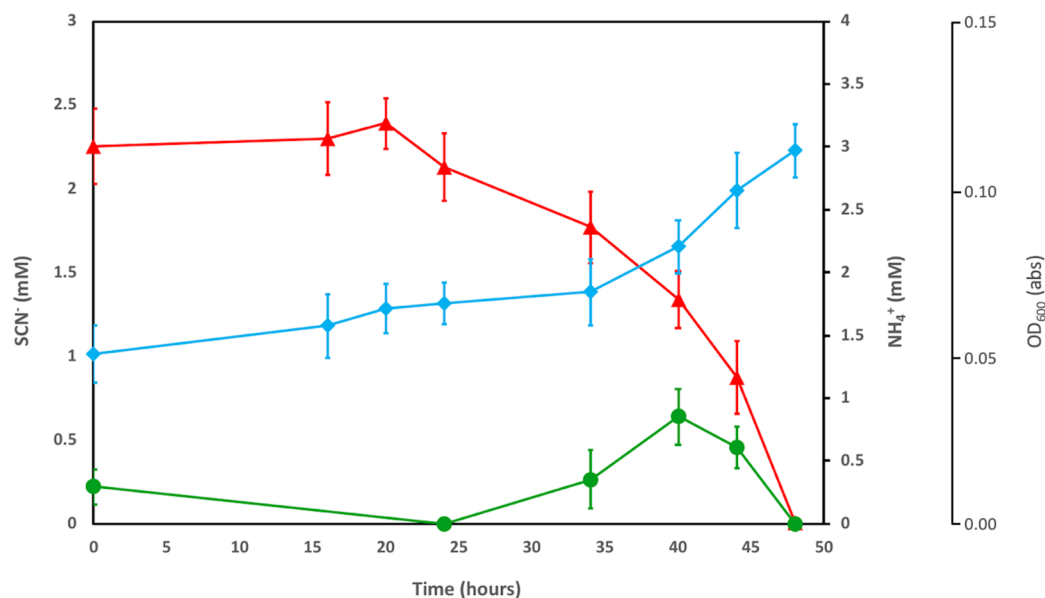


Figure 1 Concentration profiles of SCN^- (red) and NH_4^+ (green) in SCN^- metabolising culturing experiments. The profiles are shown alongside OD_{600} measurement (blue) during SCN^- removal from filter sterilised groundwater, inoculated with the groundwater culture enriched by addition of DOC and PO_4^{3-} . Error bars are equal to 1 standard deviation within each triplicate.

Full-size [DOI: 10.7717/peerj.6498/fig-1](https://doi.org/10.7717/peerj.6498/fig-1)

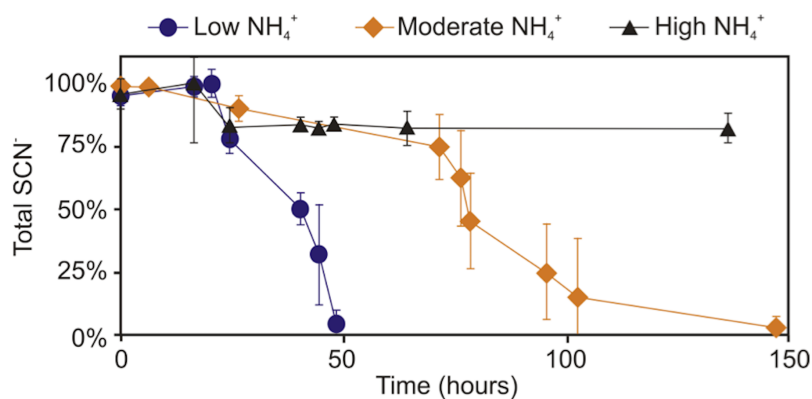


Figure 2 Concentration profile of SCN^- and NH_4^+ in groundwater SCN^- biodegradation culturing experiments. Profiles represent the inoculated (with the DOC and PO_4^{3-} enriched community) filter sterilised groundwater, in the presence of increasing NH_4^+ concentrations. Error bars are equal to 1 standard deviation within triplicates of each experiment.

Full-size [DOI: 10.7717/peerj.6498/fig-2](https://doi.org/10.7717/peerj.6498/fig-2)

was dominated by *Proteobacteria* (72.8%) and *Bacteroidetes* (25.8%), with a minor proportion of *Actinobacteria* (1.3%). The dominant families within the *Proteobacteria* were *Phyllobacteriaceae* (27.8%), *Rhodobacteriaceae* (12.8%) and *Sphingomonadaceae* (12.5%). The latter was entirely assigned to the *Novosphingobium* genus, and the dominant OTU found to be most closely related to *Novosphingobium panipatense* strain UMTKB-4 (99%), by comparison to NCBI and Greengenes databases (Tables A4 and A5). The *Phyllobacteriaceae* family was dominated by a single unclassified OTU (27.8%), most

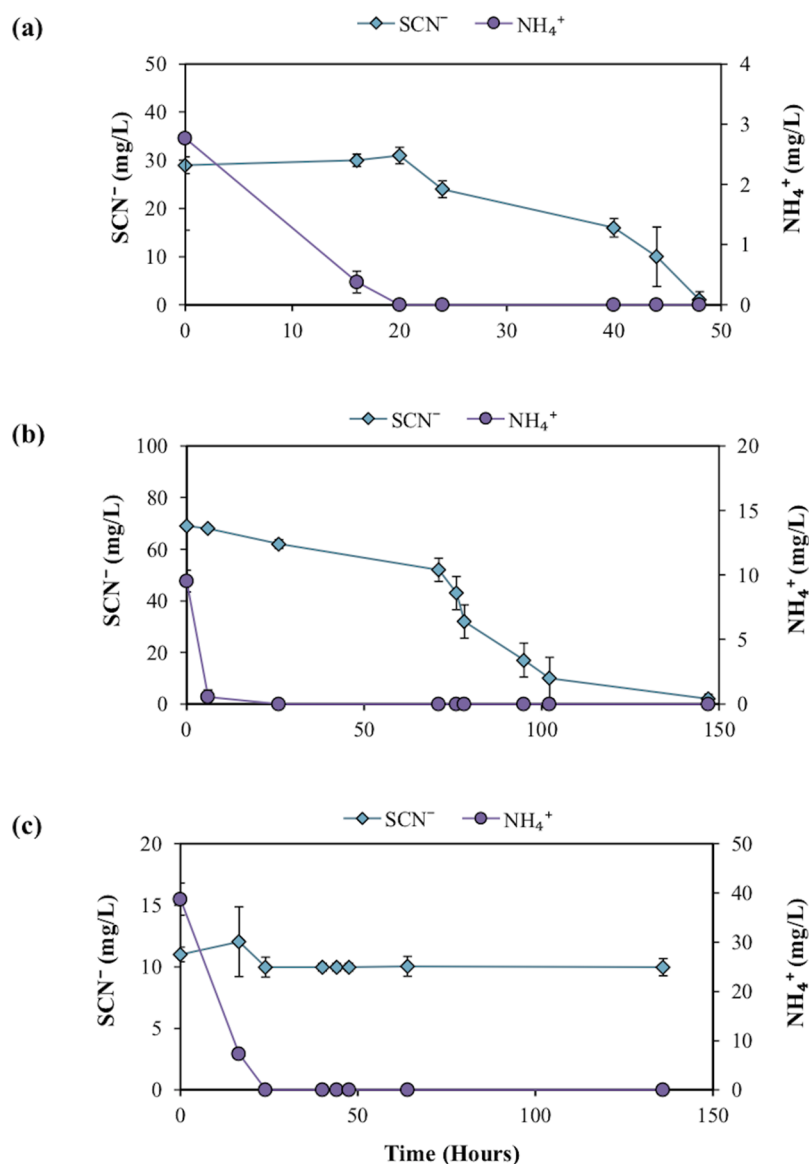


Figure 3 SCN⁻—degradation profiles with increasing NH₄⁺ concentrations by the enriched microbial consortium. (A) With unamended NH₄⁺ levels, (B) with moderate NH₄⁺ levels, and (C) with high NH₄⁺ levels. [Full-size](#) DOI: [10.7717/peerj.6498/fig-3](https://doi.org/10.7717/peerj.6498/fig-3)

closely related to an uncultured *Mesorhizobium* sp. clone S3_F08 (99% similarity). The two dominant OTUs for the *Rhodobacteraceae* family were most closely related to an uncultured bacterium clone MAL_E01 (12.8% abundance, 99% similarity), the higher abundance of the two OTUs had equal sequence similarity to an environmental sample, *Thioclava pacifica* (98% similarity) known to be capable of sulphur oxidation and consumption of simple organics (Sorokin *et al.*, 2005). In addition to these high abundance members, sequences assigned to the genera *Marteella* sp. (4.0%) and *Xanthobacter* (5.4%) made up significant minority taxa.

The *Bacteroidetes* phylum was largely dominated by a single OTU unassigned using the Greengenes database below family level, but most closely related to an uncultured

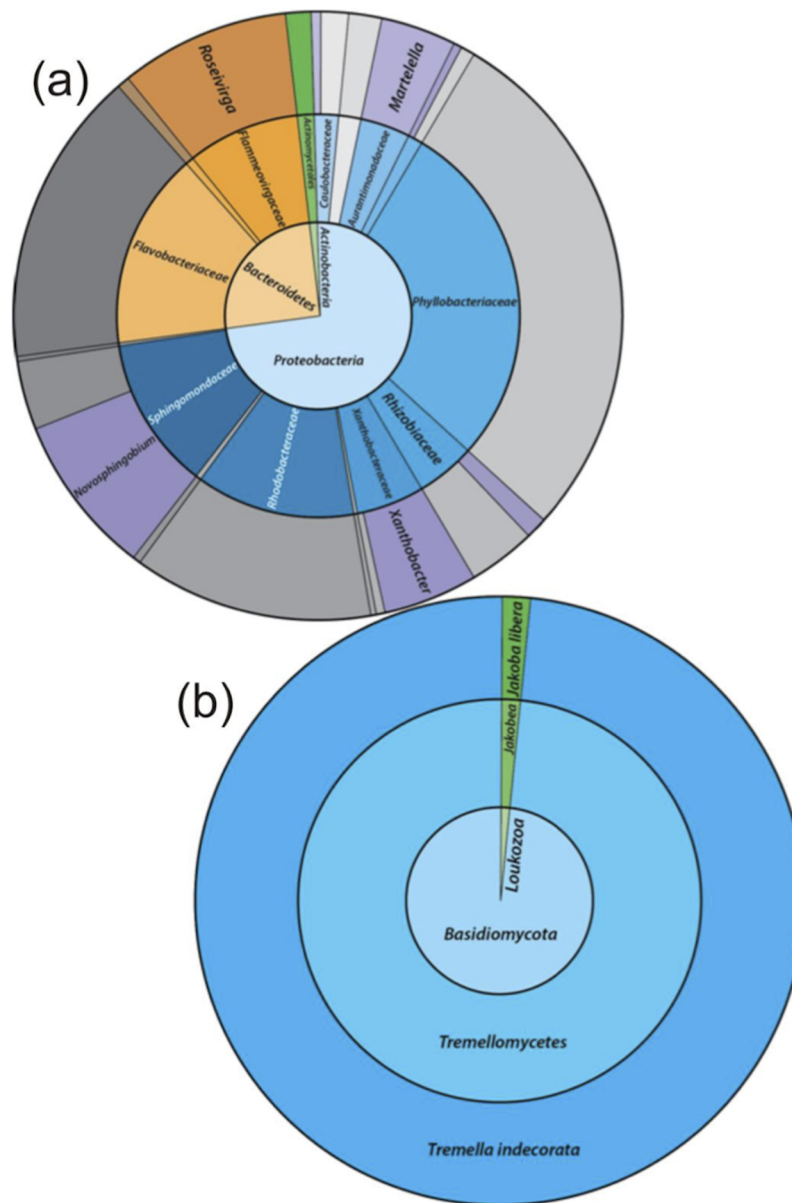


Figure 4 The relative abundance of 16S rRNA gene sequence assignments from the Greengenes database (A) and 18S rRNA gene sequence assignments from the SILVA database (B). Relative abundances are shown for the re-cultured groundwater community amended with DOC and PO_4^{3-} . 16S rRNA gene Taxonomic assignments are defined at the phylum (inner circle), family (middle) and genus (outer) levels, while 18S rRNA gene taxonomic assignments are classified at the phylum (inner), class (middle) and species (outer) levels. Classified taxa comprising $\geq 1\%$ total abundance are labelled, and grey areas represent unclassified taxa. [Full-size !\[\]\(1663bb69f307a960345edb0e712f8c02_img.jpg\) DOI: 10.7717/peerj.6498/fig-4](https://doi.org/10.7717/peerj.6498/fig-4)

Owenweeksia sp. Clone (99% similarity). Other *Bacteroidetes* sequences assigned to the *Flammeovirgaceae* family belong to the *Roseivirga* genus.

Microbial community characterisation by 18S rRNA gene sequencing

The 18S rRNA gene analysis showed a simple eukaryotic distribution (Fig. 4B), with only two unique OTUs identified: *Tremella indecorata* (98.5%), a fungus of the *Basidiomycota*

phylum and *Jakoba libera* (1.5%), a trophic flagellate from the *Loukozoa* phylum. The SILVA assigned taxonomies for these OTUs were compared to the identities assigned by the NCBI database by BLAST (Table A5). The dominant OTU, *Tremella indecorata* was most closely related as *Tremellales* sp. LM630 (99% similarity), while the less abundant OTU was most closely related to *J. libera* at 99% gene sequence similarity, which is consistent with the SILVA identity.

DISCUSSION

The microbial consortium enriched from SCN^- contaminated groundwater was able to consume SCN^- aerobically in the presence of all nutrient amendments; however, under anoxic conditions, no SCN^- degradation was observed. This dependence on oxygen (present as air) supports the interpretation that SCN^- degradation progressed via aerobic respiration. In fact, anoxic pathways have not been observed, with a notable exception through coupling to nitrate or nitrite reduction (Sorokin *et al.*, 2004). Significantly, only the culture amended with both DOC and PO_4^{3-} resulted in a microbial consortium capable of consistently performing SCN^- degradation. This suggests that in situ SCN^- degradation in groundwater by native SCN^- degrading microorganisms requires addition of both of these nutrients for sustained contaminant removal. We acknowledge, however, that the composition and performance of groundwater-derived SCN^- degrading microbial consortia may vary significantly with temperature. If so, heating of the groundwater to 20–30 °C, either in situ or ex situ, may also be required to achieve results similar to those presented here for incubated culturing experiments.

Both autotrophic and heterotrophic SCN^- -degrading organisms are known to assimilate the NH_4^+ released from SCN^- degradation as their sole source of nitrogen (Stafford & Callely, 1969). The presence of NH_4^+ likely represented a preferential source of nitrogen, in comparison to SCN^- , thereby potentially inhibiting degradation (Stafford & Callely, 1969). In the absence of added NH_4^+ , SCN^- -derived NH_4^+ was removed, potentially as a N requirement for SCN^- -degraders or other microbial community members. The amount of N released during SCN^- metabolism was on the order of one mM. Typically, pure cultures of known SCN^- oxidisers that derive their N solely from SCN^- are grown on ~1.5 mM N (e.g. DSMZ *Thiobacillus* medium). So the amount of N provided by SCN^- metabolism in our experiments was roughly 66% that provided in pure culture media, which seems sufficient to stimulate cell growth. In the NH_4^+ -amended cultures, we provided ~160 μM , 500 μM and two mM N for low, moderate and high NH_4^+ amendments, respectively. Significantly, the consumption of NH_4^+ indicated that the consortium was able to circumvent complete inhibition of SCN^- biodegradation at higher NH_4^+ concentrations. Although NH_4^+ removal through oxidation is also a possibility, no known autotrophic bacteria or archaea widely responsible for this metabolic trait were identified in this microbial community.

As the consortium may have utilised SCN^- as a source of energy, sulphur, nitrogen or carbon (Gould *et al.*, 2012), a number of metabolic niches might be associated with its degradation and the cycling of the released nutrients. A limitation of our study is the lack of data for the biodegradation products of SCN^- or glucose that might have allowed for a better understanding of SCN^- metabolism. Certain intermediate metabolites

that are diagnostic of which pathway is utilised in SCN^- metabolism may also have been lost to volatilisation, for example, carbonyl sulphide. The 16S rRNA gene sequencing identified few taxa associated with SCN^- -degradation, the most abundant being an OTU (~4.0%) assigned to the *Sphingomonadaceae* family, specifically the *Sphingopyxis* and *Sphingomonas* genera (Du Plessis *et al.*, 2001; Felföldi *et al.*, 2010).

The consortium was found to include dominant genera that share significant sequence similarity to a known sulphur-oxidising genus, *Thioclava* sp., which has demonstrated chemoautotrophic growth on intermediate sulphur compounds including thiosulphate, and heterotrophic growth on simple organics including glucose (Sorokin *et al.*, 2005). We note that certain *Thioclava* species may consume NH_4^+ as a source of nitrogen (Sorokin *et al.*, 2005). Furthermore, nitrogen-fixing bacteria were also represented in the community: *Novosphingobium* (Kaneko *et al.*, 2000), potentially having a role in nitrogen supply when NH_4^+ was absent.

The cultured microbial consortium was dominated by heterotrophs that likely played an important role in the cycling of carbon and possibly nitrogen. *Martellella* sp., *Thioclava* sp., *Novosphingobium* sp., *Roseivirga* sp. and *Basidiomycota* are all known to consume various forms of organic carbon, including glucose (Chung *et al.*, 2016; Sorokin *et al.*, 2005; Chen *et al.*, 2015; Nedashkovskaya *et al.*, 2008; Prillinger & Lopandic, 2015). The dominance of heterotrophs in this consortium suggests that the SCN^- may mostly have been degraded by heterotrophs as a source of nitrogen (via the released NH_4^+), rather than by autotrophs utilising sulphur oxidation as an energy source. This interpretation can be compared against previously documented communities dominated by autotrophic SCN^- -degraders often belonging to the *Thiobacillus* genus (Felföldi *et al.*, 2010; Huddy *et al.*, 2015; Kantor *et al.*, 2015, 2017; Watts *et al.*, 2017). We acknowledge, however, that because neither background DOC nor amended glucose were measured before or during our experiments, we can only speculate on the relationship among SCN^- degradation, glucose consumption and nitrogen assimilation.

The importance of heterotrophs in the SCN^- -degrading consortium is not well understood, with only *Sphingomonadaceae* family associated with bacterial SCN^- -degradation. Their ability to prevent the accumulation of the inhibitor NH_4^+ , likely through assimilation, may be significant when considering the implementation of a bioremediation strategy. Previous SCN^- -degrading communities have also been shown to be incapable of preventing NH_4^+ accumulation from SCN^- degradation (Shoji *et al.*, 2014), while other approaches have coupled SCN^- -biodegradation to nitrification/denitrification (Villemur *et al.*, 2015) or assimilation to biomass by algae (Ryu *et al.*, 2014). We note that, to date, only the *Acremonium* and *Fusarium* genera contain species known to degrade SCN^- (Kwon, Woo & Park, 2002; Medina *et al.*, 2012). Regardless, the coupling of SCN^- -biodegradation with microbial NH_4^+ -removal is an important requirement to perform the complete bioremediation of SCN^- and its potential intermediate degradation products.

CONCLUSION

The results presented here demonstrate that naturally occurring SCN^- -degrading microbial consortia could be enriched and directly stimulated from SCN^- contaminated

groundwater. The promotion of this extant microbial community, already adapted to the presence of SCN^- and the prevailing groundwater chemistry, would preclude the need to bio-engineer externally a mixed community or pure culture, which may be ill-suited to these conditions. Interestingly, unlike other reported SCN^- -degrading bioreactor communities (Huddy *et al.*, 2015, Ryu *et al.*, 2015, Kantor *et al.*, 2015; Watts *et al.*, 2017), our consortium did not contain significant populations of *Thiobacilli*, previously implicated as the principle SCN^- -degraders.

When considering in situ SCN^- bioremediation solutions, the lack of oxygen in the groundwater appears to be the most important inhibitor of SCN^- biodegradation. Exposing contaminated groundwater to air may therefore stimulate SCN^- biodegradation, a significant finding considering that most TSFs are unlined and therefore result in seepage of SCN^- through to poorly-oxygenated groundwater. This fact suggests in situ natural attenuation may be an oxygen-limited process, with implications for the design of a bioremediation strategy involving both nutrient and air amendments in a controlled bioreactor containing SCN^- -degrading microorganisms sourced from locally contaminated groundwater.

ADDITIONAL INFORMATION AND DECLARATIONS

Funding

This study was supported by funding from Stawell Gold Mine and an Australian Research Council Linkage Program grant to John W. Moreau (LP160100866). The funders had no role in study design, data collection and analysis, decision to publish, or preparation of the manuscript.

Grant Disclosure

The following grant information was disclosed by the authors:
Stawell Gold Mine and an Australian Research Council Linkage Program grant to John W. Moreau: LP160100866.

Competing Interests

John W. Moreau is an Academic Editor for PeerJ (Environmental Science). All other authors declare that they have no competing interests.

Author Contributions

- Liam P. Spurr conceived and designed the experiments, performed the experiments, analysed the data, prepared figures and/or tables, approved the final draft.
- Mathew P. Watts conceived and designed the experiments, analysed the data, prepared figures and/or tables, authored or reviewed drafts of the paper, approved the final draft.
- Han M. Gan analysed the data, contributed reagents/materials/analysis tools, approved the final draft.
- John W. Moreau conceived and designed the experiments, analysed the data, contributed reagents/materials/analysis tools, authored or reviewed drafts of the paper, approved the final draft.

Data Availability

The following information was supplied regarding data availability:

Raw data for all tables and figures are available in the [Supplemental Materials](#).

Supplemental Information

Supplemental information for this article can be found online at <http://dx.doi.org/10.7717/peerj.6498#supplemental-information>.

REFERENCES

- Aguirre NV, Vivas BP, Montes-Moran MA, Ania CO. 2010.** Adsorption of thiocyanate anions from aqueous solution onto adsorbents of various origin. *Adsorption Science Technology* **28(8–9)**:705–716 DOI [10.1260/0263-6174.28.8-9.705](https://doi.org/10.1260/0263-6174.28.8-9.705).
- Akcil A. 2003.** Destruction of cyanide in gold mill effluents: biological versus chemical treatments. *Biotechnology Advances* **21(6)**:501–511 DOI [10.1016/s0734-9750\(03\)00099-5](https://doi.org/10.1016/s0734-9750(03)00099-5).
- Altschul SF, Gish W, Miller W, Myers EW, Lipman DJ. 1990.** Basic local alignment search tool. *Journal of Molecular Biology* **215(3)**:403–410 DOI [10.1006/jmbi.1990.9999](https://doi.org/10.1006/jmbi.1990.9999).
- Amaral-Zettler LA, McCliment EA, Ducklow HW, Huse SM. 2009.** A method for studying protistan diversity using massively parallel sequencing of V9 hypervariable regions of small-subunit ribosomal RNA genes. *PLOS ONE* **4(7)**:e6372.
- Baethgen WE, Alley MM. 1989.** A manual colorimetric procedure for measuring ammonium nitrogen in soil and plant Kjeldahl digests. *Communications in Soil Science and Plant Analysis* **20(9–10)**:961–969 DOI [10.1080/00103628909368129](https://doi.org/10.1080/00103628909368129).
- Bezsudnova EY, Sorokin DY, Tikhonova TV, Popov VO. 2007.** Thiocyanate hydrolase, the primary enzyme initiating thiocyanate degradation in the novel obligately chemolithoautotrophic halophilic sulfur-oxidizing bacterium *Thiohalophilus thiocyanoxidans*. *Biochimica et Biophysica Acta (BBA)—Proteins and Proteomics* **1774(12)**:1563–1570 DOI [10.1016/j.bbapap.2007.09.003](https://doi.org/10.1016/j.bbapap.2007.09.003).
- Breuer P, Jeffrey C, Meakin R. 2011.** Fundamental investigations of the SO₂/Air, peroxide and Caro's acid cyanide destruction processes. In: *Proceedings of ALTA 2011 Gold Conference*. Perth: ALTA Metallurgical Services, 154–168.
- Caporaso JG, Bittinger K, Bushman FD, DeSantis TZ, Anderson GL, Knight R. 2010b.** PyNAST: a flexible tool for aligning sequences to a template alignment. *Bioinformatics* **26(2)**:266–267 DOI [10.1093/bioinformatics/btp636](https://doi.org/10.1093/bioinformatics/btp636).
- Caporaso JG, Kuczynski J, Stombaugh J, Bittinger K, Bushman FD, Costello EK, Fierer N, Pena AG, Goodrich JK, Gordon JI, Huttley GA, Kelley ST, Knights SD, Koenig JE, Ley RE, Lozupone CA, McDonald D, Muegge BD, Pirrung M, Reeder J, Sevinsky JR, Turnbaugh PJ, Walters WA, Widmann J, Yatsunenko T, Zaneveld J, Knight R. 2010a.** QIIME allows analyses of high-throughput community sequencing data. *Nature Methods* **7(5)**:335–336 DOI [10.1038/nmeth.f.303](https://doi.org/10.1038/nmeth.f.303).
- Caporaso JG, Lauber CL, Walters WA, Berg-Lyons D, Huntley J, Fierer N, Owens SM, Betley J, Fraser L, Bauer M, Gormley N, Gilbert JA, Smith G, Knight R. 2012.** Ultra-high-throughput microbial community analysis on the Illumina HiSeq and MiSeq platforms. *ISME Journal* **6(8)**:1621–1624 DOI [10.1038/ismej.2012.8](https://doi.org/10.1038/ismej.2012.8).
- Chen N, Yu X-J, Yang J-S, Wang E-T, Li B-Z, Yuan H-L. 2015.** *Novosphingobium tardum* sp. nov., isolated from sediment of a freshwater lake. *Antonie van Leeuwenhoek* **108(1)**:51–57 DOI [10.1007/s10482-015-0463-x](https://doi.org/10.1007/s10482-015-0463-x).

- Chung EJ, Hwang JM, Kim KH, Jeon CO, Chung YR. 2016.** *Martellella suaedae* sp. nov. and *Martellella limonii* sp. nov. isolated from the root of halophytes. *International Journal of Systematic and Evolutionary Microbiology* **66**(10):3917–3922 DOI [10.1099/ijsem.0.001288](https://doi.org/10.1099/ijsem.0.001288).
- Dash RR, Gaur A, Balomajumder C. 2009.** Cyanide in industrial wastewaters and its removal: a review on biotreatment. *Journal of Hazardous Materials* **163**(1):1–11 DOI [10.1016/j.jhazmat.2008.06.051](https://doi.org/10.1016/j.jhazmat.2008.06.051).
- DeSantis TZ, Hugenholtz P, Larsen N, Rojas M, Brodie EL, Keller K, Huber T, Dalevi D, Hu P, Andersen GL. 2006.** Greengenes, a chimera-checked 16S rRNA gene database and workbench compatible with ARB. *Applied and Environmental Microbiology* **72**(7):5069–5072 DOI [10.1128/aem.03006-05](https://doi.org/10.1128/aem.03006-05).
- Du Plessis CA, Barnard P, Muhlbauer RM, Naldrett K. 2001.** Empirical model for the autotrophic biodegradation of thiocyanate in an activated sludge reactor. *Letters in Applied Microbiology* **32**(2):103–107 DOI [10.1046/j.1472-765x.2001.00859.x](https://doi.org/10.1046/j.1472-765x.2001.00859.x).
- Eaton AD, Franson MAH. 2005.** *Standard methods 4500-CN M in standard methods for the examination of water and wastewater*. Twenty First Edition. Washington, D.C.: American Public Health Association, American Water Works Association and Water Environment Federation.
- Ebbs S. 2004.** Biological degradation of cyanide compounds. *Current Opinion in Biotechnology* **15**(3):231–236 DOI [10.1016/j.copbio.2004.03.006](https://doi.org/10.1016/j.copbio.2004.03.006).
- Edgar RC. 2010.** Search and clustering orders of magnitude faster than BLAST. *Bioinformatics* **26**(19):2460–2461 DOI [10.1093/bioinformatics/btq461](https://doi.org/10.1093/bioinformatics/btq461).
- Edgar RC, Haas BJ, Clemente JC, Quince C, Knight R. 2011.** UCHIME improves sensitivity and speed of chimera detection. *Bioinformatics* **27**(16):2194–2200 DOI [10.1093/bioinformatics/btr381](https://doi.org/10.1093/bioinformatics/btr381).
- Felföldi T, Székely AJ, Gorál R, Barkács K, Scheirich G, András J, Rác A, Márialigeti K. 2010.** Polyphasic bacterial community analysis of an aerobic activated sludge removing phenols and thiocyanate from coke plant effluent. *Bioresource Technology* **101**(10):3406–3414 DOI [10.1016/j.biortech.2009.12.053](https://doi.org/10.1016/j.biortech.2009.12.053).
- Gould WD, King M, Mohapatra BR, Cameron RA, Kapoor A, Koren DW. 2012.** A critical review on destruction of thiocyanate in mining effluents. *Mineral Engineering* **34**:38–47 DOI [10.1016/j.mineng.2012.04.009](https://doi.org/10.1016/j.mineng.2012.04.009).
- Grigor'eva NV, Kondrat'eva TF, Krasil'nikova EN, Karavaiko GI. 2006.** Mechanism of cyanide and thiocyanate decomposition by an association of *Pseudomonas putida* and *Pseudomonas stutzeri* strains. *Microbiology* **75**(3):266–273 DOI [10.1134/s0026261706030040](https://doi.org/10.1134/s0026261706030040).
- Haas BJ, Gevers D, Earl AM, Feldgarden M, Ward DV, Giannoukos G, Ciulla D, Tabbaa D, Highlander SK, Sodergren E, Methé B, DeSantis TZ, Petrosino JF, Knight R, Birren BW, The Human Microbiome Consortium. 2011.** Chimeric 16S rRNA sequence formation and detection in Sanger and 454-pyrosequenced PCR amplicons. *Genome Research* **21**(3):494–504 DOI [10.1101/gr.112730.110](https://doi.org/10.1101/gr.112730.110).
- Huddy RJ, Kantor RS, Van Zyl AW, Van Hille RP, Banfield JF, Harrison STL. 2015.** Analysis of the microbial community associated with a bioprocess system for bioremediation of thiocyanate- and cyanide-laden mine water effluents. *Advanced Material Research* **1130**:614–617 DOI [10.4028/www.scientific.net/amr.1130.614](https://doi.org/10.4028/www.scientific.net/amr.1130.614).
- Hughes MN. 1975.** General Chemistry. In: Newmann AA, ed. *Chemistry and Biochemistry of Thiocyanic Acid and its Derivatives*. London: Academic Press.
- Ingles J, Scott JS. 1987.** *State-of-the-art processes from the treatment of gold mill effluents* Ottawa: Environmental Protection Service, Environment Canada, 166.

- Kaneko T, Nakamura Y, Sato S, Asamizu E, Kato T, Sasamoto S, Watanabe A, Idesawa K, Ishikawa A, Kawashima K, Kimura T, Kishida Y, Kiyokawa C, Kohara M, Matsumoto M, Matsuno A, Mochizuki Y, Nakayama S, Nakazaki N, Shimpo S, Sugimoto M, Takeuchi C, Yamada M, Tabata S. 2000. Complete genome structure of the nitrogen-fixing symbiotic bacterium *Mesorhizobium loti*. *DNA Research* 7(6):331–338 DOI 10.1093/dnares/7.6.331.
- Kantor RS, Huddy RJ, Iyer R, Thomas BC, Brown CT, Aanantharaman K, Tringe S, Hettich RL, Harrison STL, Banfield JF. 2017. Genome-resolved meta-omics ties microbial dynamics to process performance in biotechnology for thiocyanate degradation. *Environmental Science & Technology* 51(5):2944–2953 DOI 10.1021/acs.est.6b04477.
- Kantor RS, Van Zyl AW, Van Hille RP, Thomas BC, Harrison ST, Banfield JF. 2015. Bioreactor microbial ecosystems for thiocyanate and cyanide degradation unravelled with genome-resolved metagenomics. *Environmental Microbiology* 17(12):4929–4941 DOI 10.1111/1462-2920.12936.
- Klindworth A, Pruesse E, Schweer T, Peplies J, Quast C, Horn M, Glöckner FO. 2013. Evaluation of general 16S ribosomal RNA gene PCR primers for classical and next-generation sequencing-based diversity studies. *Nucleic acids research* 41(1):e1.
- Kenova TA, Kormienko VL, Drozdov SV. 2010. On electrochemical oxidation of thiocyanates in solutions for cyanidation of gold-containing ores and concentrates. *Russian Journal of Applied Chemistry* 83(9):1589–1592 DOI 10.1134/s1070427210090156.
- Kwon HK, Woo SH, Park JM. 2002. Thiocyanate degradation by *Acremonium strictum* and inhibition by secondary toxicants. *Biotechnology Letters* 24(16):1347–1351.
- Lay-Son M, Drakides C. 2008. New approach to optimize operational conditions for the biological treatment of a high-strength thiocyanate and ammonium waste: pH as key factor. *Water Research* 42(3):774–780 DOI 10.1016/j.watres.2007.08.009.
- Lee CS, Kim J, Do HJ, Hwang S. 2008. Monitoring thiocyanate-degrading microbial community in relation to changes in process performance in mixed culture systems near washout. *Water Research* 42(4–5):1254–1262 DOI 10.1016/j.watres.2007.09.017.
- Medina S, Torres M, Duran Y, Ramirez R. 2012. The thiocyanate degradation by fungi isolated from mining environments and evaluation of degradative capacity. *Revista Peruana de Biología* 19:81–88.
- Nedashkovskaya OI, Kim SB, Lysenko AM, Kalinovskaya NI, Mikhailov VV. 2008. Reclassification of *Roseivirga seohaensis* (Yoon et al. 2005) Lau et al. 2006 as a later synonym of *Roseivirga ehrenbergii* Nedashkovskaya et al. 2005 and emendation of the species description. *International Journal of Systematic and Evolutionary Microbiology* 58(5):1194–1197 DOI 10.1099/ijs.0.65686-0.
- Paruchuri YL, Shivaraman N, Kumaran P. 1990. Microbial transformation of thiocyanate. *Environmental Pollution* 68(1–2):15–28 DOI 10.1016/0269-7491(90)90011-z.
- Prillinger H, Lopandic K. 2015. Yeast—types of the *basidiomycota* using cell wall sugars and ribosomal DNA sequences. *Stapfia* 103:81–96.
- Quast C, Pruesse E, Yilmaz P, Gerken J, Schweer T, Yarza P, Peplies J, Glöckner FO. 2013. The SILVA ribosomal RNA gene database project: improved data processing and web-based tools. *Nucleic Acids Research* 41(D1):D590–D596 DOI 10.1093/nar/gks1219.
- Ryu B-G, Kim W, Nam K, Kim S, Lee B, Park MS, Yang J-W. 2015. A comprehensive study on algal–bacterial communities shift during thiocyanate degradation in a microalga-mediated process. *Bioresource Technology* 191:496–504 DOI 10.1016/j.biortech.2015.03.136.
- Ryu B-G, Kim J, Yoo G, Lim J-T, Kim W, Han J-I, Yang J-W. 2014. Microalgae-mediated simultaneous treatment of toxic thiocyanate and production of biodiesel. *Bioresource Technology* 158:166–173 DOI 10.1016/j.biortech.2014.01.128.

- Shoji T, Sueoka K, Satoh H, Mino T. 2014.** Identification of the microbial community responsible for thiocyanate and thiosulfate degradation in an activated sludge process. *Process Biochemistry* 49(7):1176–1181 DOI 10.1016/j.procbio.2014.03.026.
- Shukla A, Agnihotri G, Patel KS, Hoffmann P. 2004.** Determination of thiocyanate in waste water. *Analytical Letters* 37(9):1991–2001 DOI 10.1081/al-120039441.
- Sörbo B. 1957.** A colorimetric determination of thiosulfate. *Biochimica et Biophysica Acta* 23:412–416.
- Sorokin DY, Abbas B, Van Zessen E, Muyzer G. 2014.** Isolation and characterization of an obligately chemolithoautotrophic *Halothiobacillus* strain capable of growth on thiocyanate as an energy source. *FEMS Microbiology Letters* 354(1):69–74 DOI 10.1111/1574-6968.12432.
- Sorokin DY, Antipov AN, Muyzer G, Kuenen JG. 2004.** Anaerobic growth of the haloalkaliphilic denitrifying sulfur-oxidizing bacterium *Thioalkalivibrio thiocyanodenitrificans* sp. nov. with thiocyanate. *Microbiology* 150(7):2435–2442 DOI 10.1099/mic.0.27015-0.
- Sorokin DY, Tourova TP, Lysenko AM, Kuenen JG. 2001.** Microbial thiocyanate utilization under highly alkaline conditions. *Applied Environmental Microbiology* 67(2):528–538 DOI 10.1128/aem.67.2.528-538.2001.
- Sorokin DY, Tourova TP, Spiridonova EM, Rainey FA, Muyzer G. 2005.** *Thioclava Pacifica* gen. nov., sp. nov., a novel facultatively autotrophic, marine, sulfur-oxidizing bacterium from a near-shore sulfidic hydrothermal area. *International Journal of Systematic and Evolutionary Microbiology* 55(3):1069–1975 DOI 10.1099/ijs.0.63415-0.
- Stafford DA, Callely AG. 1969.** The utilization of thiocyanate by a heterotrophic bacterium. *Microbiology* 55(2):285–289 DOI 10.1099/00221287-55-2-285.
- Stott MB, Franzmann PD, Zappia LR, Watling HR, Quan LP, Clark BJ, Houchin MR, Miller PC, Williams TL. 2001.** Thiocyanate removal from saline CIP process water by a rotating biological contactor, with reuse of the water for bioleaching. *Hydrometallurgy* 62(2):93–105 DOI 10.1016/S0304-386X(01)00185-2.
- Van Zyl AW, Harrison STL, Van Hille RP. 2011.** *Biodegradation of thiocyanate by a mixed microbial population*. Aachen: Mine Water—Managing the Challenges, (IMWA), 119–124.
- Villemur R, Juteau P, Bougie V, Ménard J, Déziel E. 2015.** Development of four-stage moving bed biofilm reactor train with a pre-denitrification configuration for the removal of thiocyanate and cyanate. *Bioresource Technology* 181:254–262 DOI 10.1016/j.biortech.2015.01.051.
- Vu HP, Mu A, Moreau JW. 2013.** Biodegradation of thiocyanate by a novel strain of *Burkholderia phytofirmans* from soil contaminated by gold mine tailings. *Letters in Applied Microbiology* 57(4):368–372 DOI 10.1111/lam.12123.
- Watson SJ, Maly E. 1987.** Thiocyanate toxicity to *Daphnia magna*: modified by pH and temperature. *Aquatic Toxicology* 10(1):1–8 DOI 10.1016/0166-445X(87)90023-3.
- Watts MP, Spurr LP, Gan HM, Moreau JW. 2017.** Characterization of an autotrophic bioreactor microbial consortium degrading thiocyanate. *Applied Microbiology and Biotechnology* 101(14):5889–5901 DOI 10.1007/s00253-017-8313-6.
- Whitlock JL. 1990.** Biological detoxification of precious metal processing wastewaters. *Geomicrobiology Journal* 8(3–4):241–249 DOI 10.1080/01490459009377896.
- Wilson I, Harris G. 1960.** The oxidation of thiocyanate by hydrogen peroxide, I. The pH-independent reaction. *Journal of the American Chemistry Society* 82(17):4515–4517 DOI 10.1021/ja01502a017.