



Simulation study of a passive plasma beam dump using varying plasma density

Kieran Hanahoe,^{1,2,a)} Guoxing Xia,^{1,2} Mohammad Islam,^{1,2} Yangmei Li,^{1,2}
Oznur Mete-Apsimon,^{3,2} Bernhard Hidding,^{4,2} and Jonathan Smith⁵

¹*School of Physics and Astronomy, University of Manchester, Oxford Road, Manchester M13 9PL, United Kingdom*

²*Cockcroft Institute, Sci-Tech Daresbury, Keckwick Lane, Daresbury, Cheshire WA4 4AD, United Kingdom*

³*Department of Engineering, Lancaster University, Bailrigg, Lancaster LA1 4YW, United Kingdom*

⁴*Department of Physics, University of Strathclyde, Richmond Street, Glasgow G1 1XQ, United Kingdom*

⁵*Tech-X UK Ltd., Sci-Tech Daresbury, Keckwick Lane, Daresbury, Cheshire WA4 4FS, United Kingdom*

(Received 22 November 2016; accepted 10 February 2017; published online 27 February 2017)

A plasma beam dump uses the collective oscillations of plasma electrons to absorb the kinetic energy of a particle beam. In this paper, a modified passive plasma beam dump scheme is proposed using either a gradient or stepped plasma profile to maintain a higher decelerating gradient compared with a uniform plasma. The improvement is a result of the plasma wavelength change preventing the re-acceleration of low energy particles. Particle-in-cell simulation results show that both stepped and gradient plasma profiles can achieve improved energy loss compared with a uniform plasma for an electron bunch of parameters routinely achieved in laser wakefield acceleration.

Published by AIP Publishing. [<http://dx.doi.org/10.1063/1.4977449>]

I. INTRODUCTION

The safe operation of a particle accelerator requires that the beam be disposed of once it has been used. This is usually achieved using a dense material such as a metal, graphite, or water. Such a conventional beam dump can stop even a very high energy electron beam in a relatively short distance. For example, the Large Electron-Positron Collider (LEP) used a 2 m long aluminium dump to stop a 100 GeV electron beam¹ and the proposed water-based dump for the International Linear Collider (ILC)^{2,3} is designed to stop a 500 GeV beam in 11 m. However, the high density of the stopping medium and high power of the beam led to a number of disadvantages for a conventional dump. Both proton and electron beams lead to the production of radionuclides in the stopping material.^{4,5} The dump must be capable of absorbing the high power of the beam (18 MW for the ILC) in a small volume, leading to high power density cooling requirements and high temperatures and pressures.³ The ILC beam dump design would operate at 10 bar and at a maximum water temperature of 155 °C. In the case of a water dump, decomposition generates hydrogen and oxygen gas which must be removed.^{2,6} In addition, structural materials may suffer radiation damage and lose strength, a concern for pressure vessels and windows.^{6,7} These considerations lead to a conventional beam dump being substantially larger than the simple stopping power may suggest. For instance, the proposed ILC dump will require a pumping station, water tower, catalytic hydrogen-oxygen recombiner, and deionizer sited above ground, connected via pipes to the dump location. A sump is also required to collect any radioactive water that may leak from the dump and ancillary equipment.³

One proposed alternative to a high density beam dump uses a beam pipe filled with a noble gas at atmospheric pressure, surrounded by iron cladding. With a length of 1000 m the power deposited per unit length is greatly reduced.⁸ Heat can be dissipated by a simple water cooling jacket at atmospheric pressure and radio-activation is reduced compared with the baseline ILC design. However, the disadvantage of this scheme is the extremely long length required to stop a high energy beam and the associated costs of providing space for such a dump.

Another dump scheme, focused on in this paper, uses a plasma wakefield to decelerate a bunch at a high gradient.⁹ The plasma beam dump minimizes radio-activation by operating at a low density even compared with a gas dump, and potentially allows for the recovery of some of the beam energy as electricity rather than dissipation as heat.⁹ The high decelerating gradients achievable with high density ultrashort bunches such as those produced by laser wakefield acceleration make plasma beam dumps suitable to complement compact accelerators with compact beam disposal.

In this paper, Section II compares the plasma beam dump with the conventional beam dump. Section II discusses the use of modified plasma profiles to improve the performance of a passive plasma beam dump and Section III presents particle-in-cell (PIC) simulation results for a range of plasma beam dump parameters using fixed beam parameters.

II. PLASMA BEAM DUMP AND CONVENTIONAL BEAM DUMP COMPARED

The stopping power, i.e., the average loss of energy T with distance, of an electron in a neutral medium depends on its energy. At high energies, losses are dominated by bremsstrahlung. The critical energy T_c may be defined as the energy at which losses due to bremsstrahlung are equal to losses due

^{a)}kieran.hanahoe@postgrad.manchester.ac.uk

to other factors, e.g., ionization. The critical energy in MeV is approximated by $T_c = (800 \text{ MeV})/(Z + 1.2)$ where Z is the atomic number of the stopping material.¹⁰ For high- Z materials such as lead or copper, bremsstrahlung dominates at any relevant energy. For lower Z materials such as water, bremsstrahlung is dominant above a few hundred MeV. The stopping power due to radiation is given by⁹

$$-\frac{dT}{dx} = Z\alpha \frac{4e^4 n_e}{mc^2} (\gamma - 1) \ln(183 Z^{-\frac{1}{3}}), \quad (1)$$

where α is the fine structure constant, m is the incident particle mass, n_e is the electron density of the stopping material, e is the elementary charge, γ is the relativistic gamma factor, and c is the speed of light, with all quantities in CGS units. As long as bremsstrahlung is dominant, the stopping power is linearly proportional to the kinetic energy of the incident particles, $T = (\gamma - 1)mc^2$.

In a plasma medium, an electron bunch is decelerated by collective oscillations of the electrons in the plasma. The plasma wakefield may be excited by the beam itself in a passive beam dump, or excited by a laser pulse in an active beam dump. The plasma may be preformed or, if the driver is of sufficient intensity, be a neutral gas ionized by the driver itself.¹¹ A field-ionized plasma would make the passive dump simple and reliable. A passive beam dump has recently been demonstrated experimentally over a short distance using a laser-accelerated bunch.^{12,13} It has previously been shown using simulations that for typical Laser Wakefield Accelerator (LWFA) bunch parameters, the initial stopping power of a passive plasma beam dump is independent of initial beam energy.⁹

The passive dump does however suffer from a major limitation of being unable to decelerate the head of the bunch due to the finite response time of the plasma. This problem can be addressed by the active beam dump, in which the beam is decelerated by the wakefield of a laser pulse.¹⁴ An active beam dump however relies on the provision of a laser pulse and accurate synchronization. Without either the dump would fail to stop the beam and a backup dump would need to be available.

Recent experimental results have shown that an electron beam can be decelerated by a plasma when initially offset transversely from the plasma column.¹⁵ The electron beam is attracted by the charge imbalance created by the beam's transverse fields. In a plasma beam dump employing a pre-formed plasma, this phenomenon would allow the requirements on alignment of the bunch and plasma column width to be relaxed, potentially improving the reliability of the dump.

The highest decelerating gradients for a given plasma density can be achieved in the non-linear regime, where the bunch density exceeds the plasma density. The limit on the maximum decelerating gradient is the wave-breaking field E_{wb} , which depends on the electron plasma frequency ω_p

$$E_{wb} = \frac{m_e c \omega_p}{e}, \quad (2)$$

$$\omega_p = \left(\frac{e^2 n_p}{\epsilon_0 m_e} \right)^{\frac{1}{2}}, \quad (3)$$

where m_e is the electron mass, ϵ_0 is the permittivity of free space, and n_p is the plasma electron density, and all quantities are in SI units.

The limit of the wave-breaking field for a plasma density of 10^{24} m^{-3} can be compared with a copper beam dump for an electron beam of 1 GeV. Equation (1) gives an initial average decelerating gradient of 5.1 GeV m^{-1} compared with a wave-breaking field of 96 GV m^{-1} . The actual decelerating gradient that can be achieved in a plasma depends on the properties of the electron bunch. A short bunch with density higher than the plasma density can achieve a gradient approaching the wave-breaking limit as has been demonstrated experimentally.^{11,16–18}

Very short, high density bunches are routinely produced by laser wakefield acceleration,^{19–22} making plasma beam dumps well suited to pairing with laser plasma accelerators. Long bunches can drive large wakefields by self-modulation, potentially widening the scope of applicability of the plasma beam dump. Recent experiments have provided an initial indication of self-modulation in a long electron beam.²³ Such long bunches are however not studied in this paper. Experiments have also shown that positron bunches can drive strong plasma wakefields,¹⁸ indicating that a plasma beam dump would also be applicable to a positron beam.

III. PLASMA BEAM DUMP SCHEMES

The simplest version of a plasma beam dump is a uniform plasma into which the particle bunch to be decelerated propagates. The head of the bunch will experience no decelerating field, while some part of the bunch will experience a maximum decelerating field. After some time the part of the bunch that experiences the maximum field will become non-relativistic and will fall behind the rest of the bunch until it reaches an accelerating region of the wakefield. The portion of the bunch will then absorb energy from the wakefield and be re-accelerated. This leads to the rate of energy loss of the bunch dramatically decreasing after a saturation length L_{sat} , as a substantial proportion of the energy lost is reabsorbed. The saturation length for a beam of initial energy T_0 is approximately the propagation length at which the maximum decelerating gradient E_{dec} decelerates a portion of the beam to non-relativistic velocity

$$L_{sat} \approx \frac{T_0}{eE_{dec}}. \quad (4)$$

Since the decelerating gradient of a passive plasma beam dump depends on the bunch dimensions but not on the initial energy, a higher energy beam can be dumped using a correspondingly longer plasma. As a higher energy beam will remain highly relativistic for longer as it loses energy, a greater fraction of the initial energy can be absorbed before dephasing causes the decelerating gradient to fall.

Wu *et al.* proposed to use a structured plasma consisting of a series of foils starting after L_{sat} to absorb the low energy particles and prevent them from being re-accelerated.⁹ The presence of thin foils in the path of a high power beam, and the potential for high temperatures and electric fields in the plasma may lead to damage to the foils. A scheme that

achieves the same result using a plasma-only decelerating medium may be attractive.

As an alternative to the use of foils to absorb low energy particles, the decelerated particles can be removed from the accelerating region of the wakefield by defocusing. This can be achieved by increasing the plasma density once the bunch has travelled over the saturation length. The plasma wavelength λ_p is related to the plasma electron density n_p by

$$\lambda_p = 2\pi c \left(\frac{\epsilon_0 m_e}{e^2 n_p} \right)^{\frac{1}{2}} \approx 3.3 \times 10^7 / \sqrt{n_p}, \quad (5)$$

where all quantities are in SI units. As the density increases the plasma wavelength decreases, effectively shifting the bunch within the wakefield. Half of one plasma wavelength behind the drive bunch is the region of highest on-axis electron density. If the plasma density is increased, decelerated particles will pass through a strong defocusing region and be removed from the axis. This will prevent their re-acceleration. For a stepped plasma, the change in plasma wavelength is instantaneous and the decelerated particles do not need to pass through the accelerating region. For a gradual plasma density increase the decelerated particles will gain energy in the accelerating region prior to being defocused. Figure 1 shows a diagram of the stepped and gradient plasma density schemes. The rate of change with position of the plasma wavelength can be calculated for a given plasma profile, by taking the derivative of λ_p (Equation (5)) with respect to z . For a linearly increasing plasma density from initial density n_i to a final density n_f over a length l

$$\frac{d\lambda}{dz} = \frac{\pi c e^2 n_f}{\epsilon_0 l m_e} \left[\frac{e^2 n_i \left(1 + \frac{n_f z}{n_i l} \right)}{\epsilon_0 m_e} \right]^{-\frac{3}{2}}. \quad (6)$$

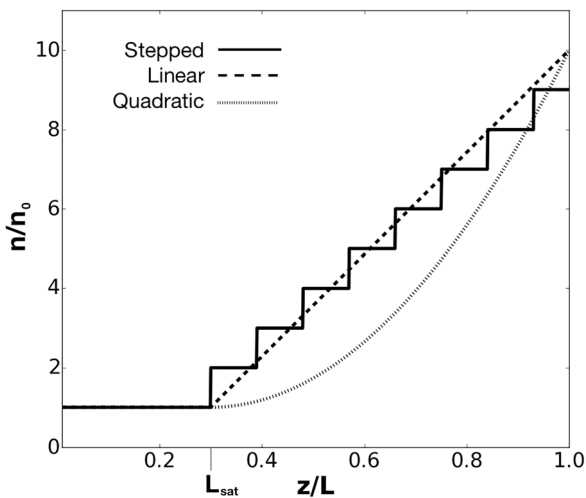


FIG. 1. Plot illustrating stepped, linear gradient, and quadratic gradient plasma density schemes. The density is constant over the saturation length L_{sat} and then increases over the remaining length l . The total plasma length is $L = L_{\text{sat}} + l$. For the stepped scheme, the gradient increases by a fixed amount for each step, while for the gradient schemes the density increases to ten times its initial value.

In the linear regime, the defocusing region is located $\lambda_p/4$ behind the maximum decelerating region. The propagation distance Δz over which the plasma wavelength changes by $1/4$ can be estimated assuming that the rate of change of plasma wavelength is constant, and the energy gain ΔT is the average accelerating field E_{acc} multiplied by the propagation distance

$$\Delta T = E_{\text{acc}} \Delta z = E_{\text{acc}} \frac{\lambda_0}{4} \left(\frac{d\lambda}{dz} \right)^{-1}, \quad (7)$$

where λ_0 is the initial plasma wavelength at a given position z . The more rapid the change in plasma density, the less energy will be gained by the decelerated particles; however, the density has to remain low enough to be achievable and to generate a high decelerating field. In this study the density was increased by a factor of ten over the plasma length. Linear and quadratic plasma density changes were considered. A quadratic density profile was found to reduce the expected re-acceleration over a larger portion of the plasma length compared with a linear ramp.

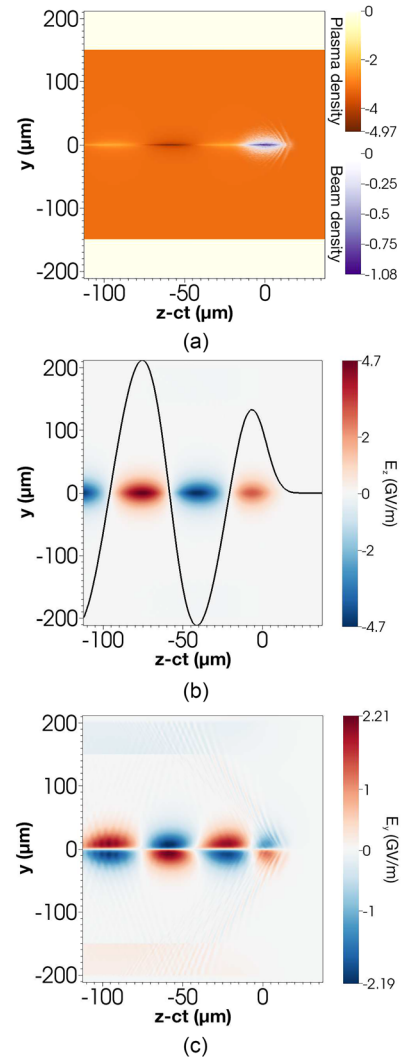


FIG. 2. Plot of (a) plasma electron and beam charge density, (b) longitudinal electric field, and (c) transverse electric field at $z = 5$ cm. The line in part (b) indicates the value of the field along the z -axis.

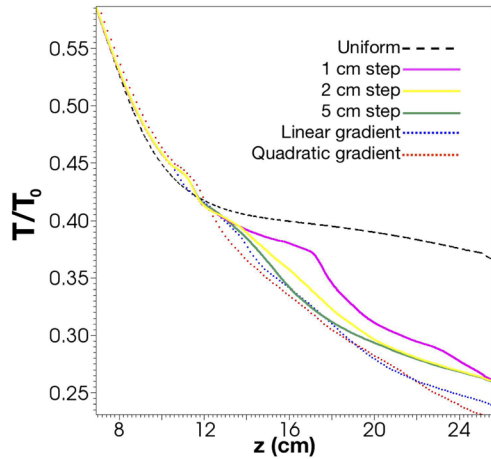


FIG. 3. Energy loss with distance for uniform, stepped, and gradient plasma density profiles. Prior to approximately $z = 10$ cm all profiles show the same constant decelerating gradient, so this region is omitted from the plot. The vertical axis gives total beam energy as a fraction of initial beam energy.

IV. SIMULATION RESULTS

Two-dimensional simulations of passive beam dump schemes were carried out using the explicit particle-in-cell (PIC) code VSim.²⁴ Bunch parameters were chosen to represent a bunch that can be generated routinely by laser wake-field acceleration.^{19–22} The bunch has an rms length of

$7.5 \mu\text{m}$, rms radius of $20 \mu\text{m}$, and charge of 100 pC . The total energy of the bunch is 0.025 J corresponding to a bunch which may be generated by a modest laser pulse of 0.25 J assuming 10% laser to bunch efficiency.²⁵ A moderate energy of 250 MeV allows the simulation length to be kept short. A 25 cm plasma length allows the deceleration to saturate and for modified density schemes to be studied. An initial plasma density n_i of $2 \times 10^{23} \text{ m}^{-3}$ was used, for a range of step lengths and for linear and quadratically increasing plasma density after the saturation length. The initial density corresponds to a plasma wavelength of $75 \mu\text{m}$. For the gradient plasma schemes the density was increased by a factor of 10 starting from the saturation length and ending at the end of the plasma. The step schemes increased the plasma density by n_i for each step. The step length refers to the length of the flat plasma density between each step. The plasma and beam density and electric fields at $z = 5 \text{ cm}$ are shown in Figure 2, before any plasma density change occurs. The peak decelerating field of approximately 3 GV m^{-1} gives a calculated saturation length of 8.3 cm . Preliminary simulations showed that saturation in fact occurs at approximately 10.5 cm and this value was used in subsequent simulations.

Figure 3 shows the change in total beam energy for different dump schemes. The gradient scheme proved to provide the greatest energy loss over 25 cm . Figure 4 shows the longitudinal phase space for a uniform plasma and a 1 cm stepped plasma profile. In each plot the bunch has

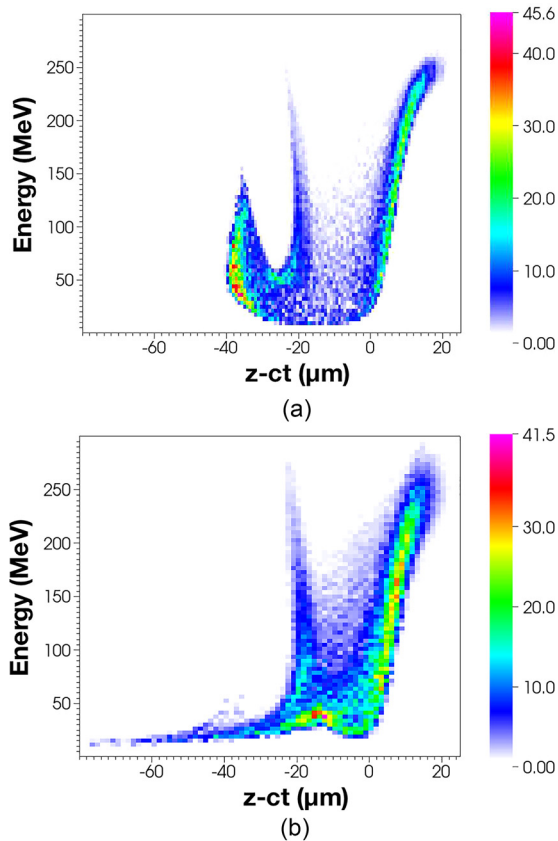


FIG. 4. Longitudinal phase space histogram at $z = 16.3 \text{ cm}$ for a uniform plasma (a) and a linear gradient plasma profile (b). The energy scale corresponds to $\gamma/m_e c^2$ and as such is not accurate for non-relativistic velocities. The color scale gives the sum of macroparticle weight for each bin.

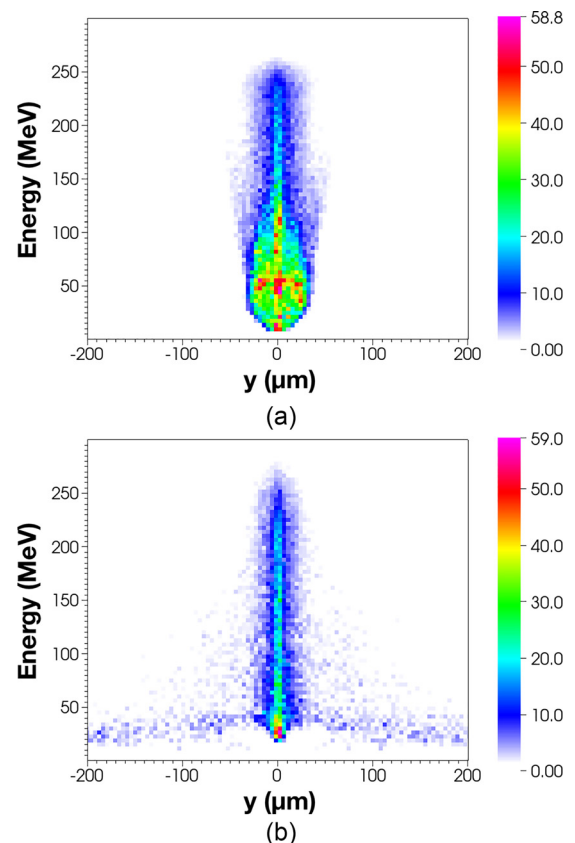


FIG. 5. Histogram of energy vs. transverse coordinate at $z = 16.3 \text{ cm}$ for a uniform plasma (a) and a linear gradient plasma profile (b). The color scale gives the sum of macroparticle weight for each bin.

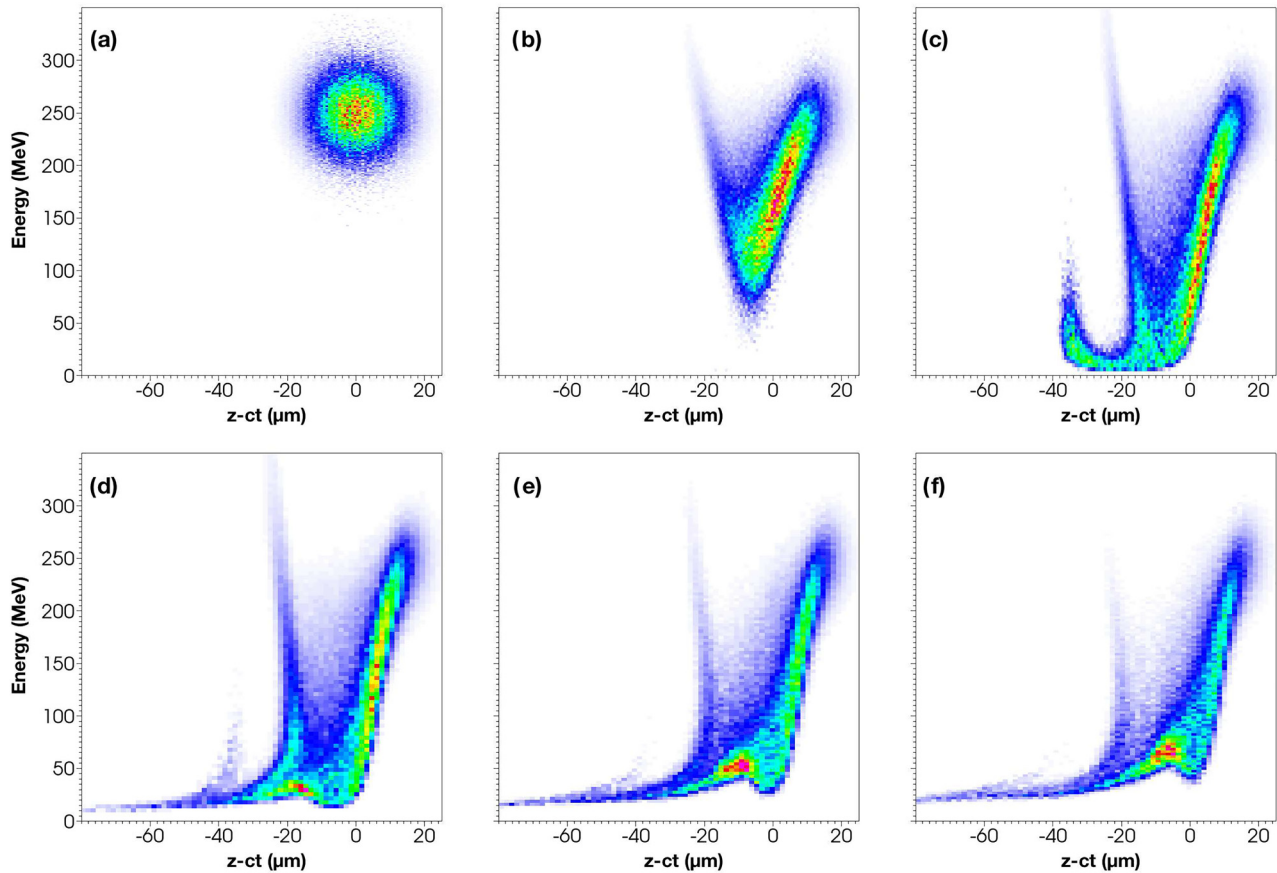


FIG. 6. Evolution of the longitudinal phase space for a plasma with a linear density increase. Phase space at $z =$ (a) 0, (b) 5, (c) 10, (d) 15, (e) 20, and (f) 25 cm are shown. The x and y scales for each plot are the same, while the color scales are not.

propagated 16.3 cm in the plasma, some distance beyond the saturation length of approximately 10 cm. It can be seen that significantly less charge is re-accelerated in the case of the gradient profile. In the region $z - ct < -30 \mu\text{m}$, outside the extent of the initial bunch, at $z = 16.3$ cm there was found to be 25 pC of charge re-accelerated to greater than 30 MeV. This compares with only 0.6 pC in the gradient plasma density case. The higher energy portion of the bunch located at $z - ct = -20 \mu\text{m}$ is the tail of the bunch which experiences a lower decelerating gradient than the central part. Figure 5 shows a plot of energy and transverse position at the same propagation distance. The lowest energy part of the bunch has been defocused while the higher energy particles have not been affected. The defocused particles are limited to less than approximately 50 MeV. The evolution of the longitudinal phase space for a linear plasma density increase is shown in Figure 6. It can be seen that at $z = 10$ cm (Figure 6(c)), before the start of the density increase, some of the decelerated particles have started to be re-accelerated. Once the density increase commences, the re-accelerated particles are lost (Figures 6(d)–6(f)). A comparison of the initial and final energy spectra for the linear ramp case is shown in Figure 7. Although the peak energy of the bunch remains largely unchanged, the intensity of particles at the initial central energy has been reduced by a factor of 10. The relativistic γ at the peak intensity of the final bunch corresponds to an energy of approximately 75 MeV.

V. CONCLUSION AND OUTLOOK

Simulation results show that a short, moderate charge electron bunch can lose a large fraction of its energy in a 25 cm plasma. Stepped and gradient plasma profiles are capable of improving energy loss and provide an alternative to the previously proposed foil scheme. Gradient plasma profiles were found to be most effective in improving energy loss; however, there was relatively little difference between the linear and quadratic plasma profiles. The largest energy loss achieved in simulations was approximately 75% of the initial beam energy. The advantage of the gradient scheme

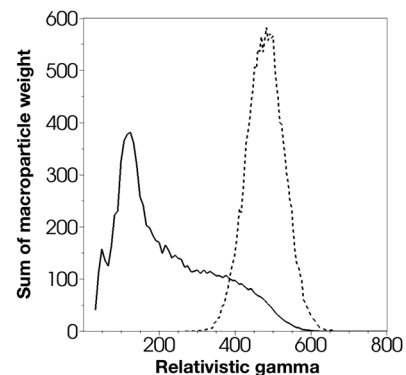


FIG. 7. Histogram of γ of the electron bunch at $z = 0$ (dashed line) and after 25 cm (solid line) for a linear gradient plasma profile. The y -scale is the sum of macroparticle weight in each bin. 100 equally sized bins were used.

suggests that the energy gain of non-relativistic particles while the plasma wavelength changes is not significant for the parameters used. However, this may not be the case when bunch parameters are such that the accelerating gradient is very large. The achievability of the modified plasma density profiles will depend on the technology used for the source, which will in turn depend on the beam and plasma parameters. Such considerations will be important if such a passive plasma beam dump is to be experimentally tested in the future.

Plasma beam dumps show great promise both in providing compact deceleration to complement high-gradient novel accelerators and in reducing the complexity of beam dumps in conventional accelerators. Although passive plasma beam dumps are not capable of decelerating the head of the bunch, the rapid reduction in total beam energy would allow for a conventional beam dump to absorb the remaining energy with greatly reduced radio-activation and cooling requirements.

ACKNOWLEDGMENTS

This work was supported by the Cockcroft Institute Core Grant and the STFC. The authors gratefully acknowledge the computing time granted on the supercomputer JURECA at Jülich Supercomputing Centre (JSC).

- ¹E. Carlier, U. Jansson, R. Jung, V. Mertens, S. Péraire, M. Ross, G. Schröder, G. R. Stevenson, E. B. Vossenber, E. Weisse, and J. M. Zazula, in *Proceedings of the 4th European Particle Accelerator Conference* (1994), p. 2494.
- ²C. Adolphsen, M. Barone, B. Barish, K. Buesser, P. Burrows, J. Carwardine, J. Clark, H. Mainaud Durand, G. Dugan, E. Elsen, A. Enomoto, B. Foster, S. Fukuda, W. Gai, M. Gastal, R. Geng, C. Ginsburg, S. Guiducci, M. Harrison, H. Hayano, K. Kershaw, K. Kubo, V. Kuchler, B. List, W. Liu, S. Michizono, C. Nantista, J. Osborne, M. Palmer, J. McEwan Paterson, T. Peterson, N. Phinney, P. Pierini, M. Ross, D. Rubin, A. Seryi, J. Sheppard, N. Solyak, S. Stapnes, T. Tauchi, N. Toge, N. Walker, A. Yamamoto, and K. Yokoya, “ILC technical design report vol. 3, part II—Baseline design,” Technical Report No. ILC-REPORT-2013-040 (Linear Collider Collaboration, Batavia, IL, USA, 2013).
- ³P. Satyamurthy, P. Rai, V. Tiwari, K. Kulkarni, J. Amann, R. G. Arnold, D. Walz, A. Seryi, T. Davenne, O. Caretta, C. Densham, and R. Appleby, *Nucl. Instrum. Methods Phys. Res., Sect. A* **679**, 67 (2012).
- ⁴D. Schumann, J. Neuhausen, J. Eikenberg, M. Rüthi, M. Wohlmuther, P. W. Kubik, H. A. Synal, V. Alfimov, G. Korschinek, G. Rugel, and T. Faestermann, *Radiochim. Acta* **97**, 123 (2009).
- ⁵A. Leuschner and K. Tesch, “The residual radioactivity of a water-copper beam dump for the TESLA test facility,” Technical Report No. DESY D3-92 (Deutsches Elektronen-Synchrotron, Hamburg, Germany, 1998).
- ⁶D. R. Walz, J. Jurow, and E. L. Garwin, *IEEE Trans. Nucl. Sci.* **12**, 867 (1965).
- ⁷K. Nordlund, A. Sand, F. Granberg, S. J. Zinkle, R. Stoller, R. S. Averback, T. Suzudo, L. Malerba, F. Banhart, W. J. Weber, F. Willaime, S. Dudarev, and D. Simeone, “Primary radiation damage in materials,” Technical Report No. NEA/NSC/DOC(2015)9 (OECD-NEA, Paris, France, 2015).
- ⁸A. Leuschner, “Another crazy idea of an LC dump compared to the water dump design,” LC-ABD Dump Meetings (2005).
- ⁹H. C. Wu, T. Tajima, D. Habs, A. W. Chao, and J. Meyer-ter Vehn, *Phys. Rev. Spec. Top. Accel. Beams* **13**, 101303 (2010).
- ¹⁰Particle Data Group, *Phys. Lett. B* **667**, 261 (2008).
- ¹¹M. Hogan, T. O. Raubenheimer, A. Seryi, T. Katsouleas, C. Huang, W. Lu, W. An, K. A. Marsh, W. B. Mori, C. E. Clayton, and C. Joshi, *New J. Phys.* **12**, 055030 (2010).
- ¹²S. Chou, “Investigation of electron acceleration and deceleration in plasmas,” Ph.D. thesis, Ludwig-Maximilian University of Munich, Munich, Germany, 2015.
- ¹³S. Chou, J. Xu, K. Khrennikov, D. E. Cardenas, J. Wenz, M. Heigoldt, L. Hofmann, L. Veisz, and S. Karsch, *Phys. Rev. Lett.* **117**, 144801 (2016).
- ¹⁴A. Bonatto, C. B. Schroeder, J. L. Vay, C. G. R. Geddes, C. Benedetti, E. Esarey, and W. P. Leemans, *Phys. Plasmas* **22**, 083106 (2015).
- ¹⁵E. Adli, C. Lindström, J. Allen, C. Clarke, J. Frederico, S. Gessner, S. Green, M. Hogan, M. Litos, B. O’Shea, V. Yakimenko, W. An, C. Clayton, K. Marsh, W. Mori, C. Joshi, N. Vafaei-Najafabadi, S. Corde, and W. Lu, *New J. Phys.* **18**, 103013 (2016).
- ¹⁶I. Blumenfeld, C. E. Clayton, F. J. Decker, M. J. Hogan, C. Huang, R. Ischebeck, R. Iverson, C. Joshi, T. Katsouleas, N. Kirby, W. Lu, K. A. Marsh, W. B. Mori, P. Muggli, E. Oz, R. H. Siemann, D. Walz, and M. Zhou, *Nature* **445**, 741 (2007).
- ¹⁷M. Litos, E. Adli, W. An, C. I. Clarke, C. E. Clayton, S. Corde, J. P. Delahaye, R. J. England, A. S. Fisher, J. Frederico, S. Gessner, S. Z. Green, M. J. Hogan, C. Joshi, W. Lu, K. A. Marsh, W. B. Mori, P. Muggli, N. Vafaei-Najafabadi, D. Walz, G. White, Z. Wu, V. Yakimenko, and G. Yocky, *Nature* **515**, 92 (2014).
- ¹⁸S. Corde, E. Adli, J. M. Allen, W. An, C. I. Clarke, C. E. Clayton, J. P. Delahaye, J. Frederico, S. Gessner, S. Z. Green, M. J. Hogan, C. Joshi, N. Lipkowitz, M. Litos, W. Lu, K. A. Marsh, W. B. Mori, M. Schmeltz, N. Vafaei-Najafabadi, D. Walz, V. Yakimenko, and G. Yocky, *Nature* **524**, 442 (2015).
- ¹⁹S. Karsch, J. Osterhoff, A. Popp, T. P. Rowlands-Rees, Z. Major, M. Fuchs, B. Marx, R. Hörlein, K. Schmid, L. Veisz, S. Becker, U. Schramm, B. Hidding, G. Pretzler, D. Habs, F. Grüner, F. Krausz, and S. M. Hooker, *New J. Phys.* **9**, 415 (2007).
- ²⁰J. Osterhoff, A. Popp, Z. Major, B. Marx, T. P. Rowlands-Rees, M. Fuchs, M. Geissler, R. Hörlein, B. Hidding, S. Becker, E. A. Peralta, U. Schramm, F. Grüner, D. Habs, F. Krausz, S. M. Hooker, and S. Karsch, *Phys. Rev. Lett.* **101**, 085002 (2008).
- ²¹A. Buck, J. Wenz, J. Xu, K. Khrennikov, K. Schmid, M. Heigoldt, J. M. Mikhailova, M. Geissler, B. Shen, F. Krausz, S. Karsch, and L. Veisz, *Phys. Rev. Lett.* **110**, 185006 (2013).
- ²²V. Malka, in *Proceedings of the 4th International Particle Accelerator Conference* (2013), p. 11.
- ²³E. Adli, V. B. Olsen, C. Lindström, P. Muggli, O. Reimann, J. Vieira, L. Amorim, C. Clarke, S. Gessner, S. Green, M. Hogan, M. Litos, B. O’Shea, V. Yakimenko, C. Clayton, K. Marsh, W. Mori, C. Joshi, N. Vafaei-Najafabadi, and O. Williams, *Nucl. Instrum. Methods Phys. Res., Sect. A* **829**, 334 (2016).
- ²⁴C. Nieter and J. Cary, *J. Comput. Phys.* **196**, 448 (2004).
- ²⁵V. Malka, J. Faure, Y. Glinec, and A. Lifschitz, in *Proceedings of the 10th European Particle Accelerator Conference* (2006), p. 10.