

# Kent Academic Repository

## Full text document (pdf)

### Citation for published version

Annis, Sofia and Fleischmann, Zoe and Khrapko, Mark and Franco, Melissa and Wasko, Kevin and Woods, Dori and Kunz, Wolfram S. and Ellis, Peter J.I. and Khrapko, Konstantin (2019) Quasi-Mendelian Paternal Inheritance of Mitochondrial Dna: A Notorious Artifact, or Anticipated Behavior? *Proceedings of the National Academy of Sciences*, 116 (30). pp. 14797-14798.

### DOI

<https://doi.org/10.1073/pnas.1821436116>

### Link to record in KAR

<https://kar.kent.ac.uk/75682/>

### Document Version

Publisher pdf

#### Copyright & reuse

Content in the Kent Academic Repository is made available for research purposes. Unless otherwise stated all content is protected by copyright and in the absence of an open licence (eg Creative Commons), permissions for further reuse of content should be sought from the publisher, author or other copyright holder.

#### Versions of research

The version in the Kent Academic Repository may differ from the final published version.

Users are advised to check <http://kar.kent.ac.uk> for the status of the paper. **Users should always cite the published version of record.**

#### Enquiries

For any further enquiries regarding the licence status of this document, please contact:

[researchsupport@kent.ac.uk](mailto:researchsupport@kent.ac.uk)

If you believe this document infringes copyright then please contact the KAR admin team with the take-down information provided at <http://kar.kent.ac.uk/contact.html>

# Quasi-Mendelian paternal inheritance of mitochondrial DNA: A notorious artifact, or anticipated behavior?

Sofia Annis<sup>a,1</sup>, Zoe Fleischmann<sup>a,1</sup>, Mark Khrapko<sup>a</sup>, Melissa Franco<sup>a</sup>, Kevin Wasko<sup>a</sup>, Dori Woods<sup>a</sup>, Wolfram S. Kunz<sup>b</sup>, Peter Ellis<sup>c,2</sup>, and Konstantin Khrapko<sup>a,2</sup>

A recent report (1) presents the long-awaited confirmation of paternal inheritance of mtDNA in humans (2). Surprisingly, paternal transmission of mtDNA (1) follows a bimodal pattern: About half of the offspring show fairly uniform paternal/maternal heteroplasmy levels, while the rest do not inherit paternal mtDNA at all. This pattern resembles the inheritance of a dominant nuclear gene. The authors explain this pattern as permissive inheritance resulting from a faulty “gatekeeper” gene (1). However, 3 groups (3–5) instead suspect contamination with mtDNA nuclear pseudogenes (NUMTs), a notorious artifact (6).

Based on our vast NUMT experience, we support the authors’ response (7), asserting that NUMT artifact is unlikely (further explanation is given in Supporting Notes [SN] sections SN1 and SN2, see ref. 8). However, we also demonstrate that the authors’ dominant gatekeeper explanation is incorrect, because spermatozoa are functionally diploid (SN3) and thus are equally affected by the faulty gatekeeper. This leaves the quasi-Mendelian inheritance unexplained.

We offer an alternative explanation based on our analysis of the intracellular population dynamics of paternal mtDNA (Fig. 1). With a defective gatekeeper, a spermatozoon delivers <100 paternal mtDNA molecules (SN4) to the oocyte. In the beginning, cleavage of the embryo proceeds without mtDNA replication, and mtDNA molecules, including paternal ones, are randomly distributed among the blastomeres. Because of the low initial number of paternal molecules, some blastomeres are not “seeded” with paternal mtDNA (Fig. 1B) or later lose it due to intracellular “genetic drift.” Early replication of an mtDNA subpopulation offsets genetic drift, and ultimately about half of cells remain seeded with paternal mtDNA (SN7.2).

Because paternal inheritance includes reproducible, ~1,000-times enrichment of paternal mtDNA, paternal mtDNA haplotype must have selective advantage (SN5). Competition between mtDNA haplotypes is well documented (9), and, as we show (SN6), is sufficiently strong to enrich the paternal haplotype to ~100% in the “seeded” cell lineages. Nonseeded lineages naturally remain 100% maternal, so a mosaic of cells with mostly paternal and pure maternal mtDNA is created (Fig. 1E).

In mosaic somatic tissue, the heteroplasmy level equals the proportion of “paternal mtDNA” cells, which in turn is equal to the “seeding density,” that is, the proportion of embryonic cell lineages that received (and kept) paternal mtDNA.

Similarly, in male germline, selection for paternal mtDNA ultimately results in a mosaic of spermatozoa with paternal and maternal mtDNA (Fig. 1F). This explains the quasi-Mendelian bimodal inheritance, with a transmission rate equal to the “seeding density” of germline lineages. Female germline (no selection) follows a different path (Fig. 1G and SN7.3.2)

Intuitively, seeding density should depend on the initial number of paternal mtDNA, the timing of mtDNA replication initiation, and the dynamics of the intracellular population of mtDNA molecules. To investigate the combined effect of these factors quantitatively, we performed numerical simulations of mtDNA behavior (SN7.2). Simulations predict intermediate seeding densities and heteroplasmy levels in somatic and germ cells (SN7.3), in agreement with the observations (SN7.1).

In conclusion, despite apparent inconsistencies and some missing quality control (SN10), Luo et al. (1) have likely described genuine cases of paternal inheritance, and their seemingly impossible inheritance patterns are compatible with known mtDNA biology.

<sup>a</sup>Department of Biology, Northeastern University, Boston, MA 02115; <sup>b</sup>Department of Experimental Epileptology and Cognition Research, University of Bonn, 53127 Bonn, Germany; and <sup>c</sup>School of Biosciences, University of Kent, Kent CT2 7NJ, United Kingdom

Author contributions: S.A., Z.F., M.F., D.W., W.S.K., P.E., and K.K. designed research; S.A., Z.F., M.K., M.F., K.W., P.E., and K.K. performed research; S.A., Z.F., M.K., K.W., and K.K. contributed new reagents/analytic tools; S.A., Z.F., M.K., M.F., K.W., D.W., W.S.K., P.E., and K.K. analyzed data; and S.A., Z.F., M.F., D.W., W.S.K., P.E., and K.K. wrote the paper.

The authors declare no conflict of interest.

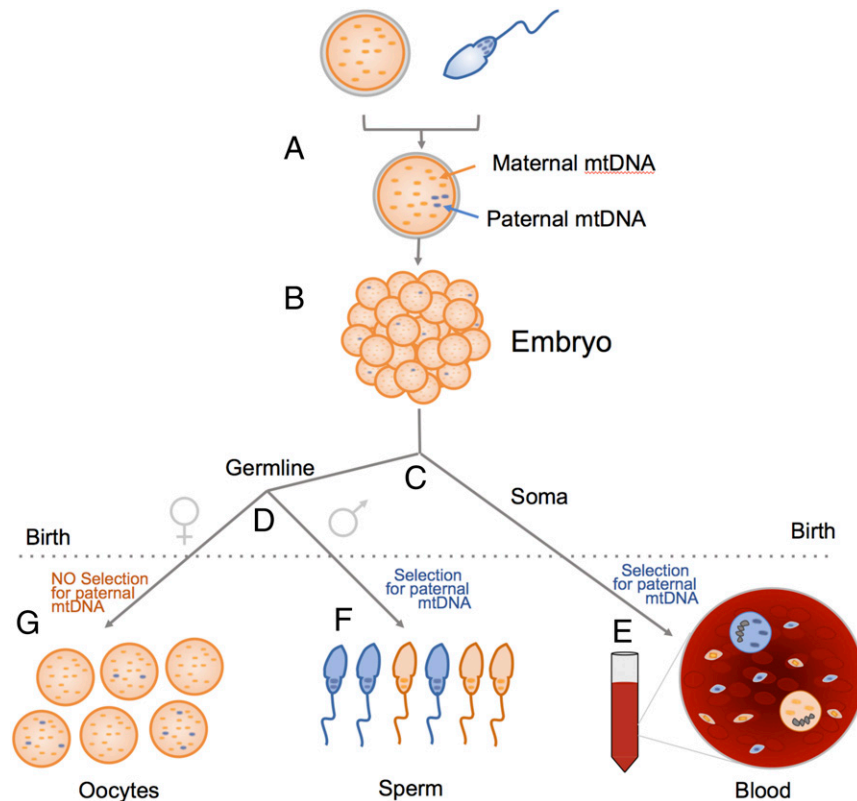
Published under the [PNAS license](#).

Data deposition: Supporting Notes for this letter are available at <https://figshare.com/s/2c0d2508a0245b5e118f>.

<sup>1</sup>S.A. and Z.F. contributed equally to this work.

<sup>2</sup>To whom correspondence may be addressed. Email: [p.j.i.ellis@kent.ac.uk](mailto:p.j.i.ellis@kent.ac.uk) or [kkhrapko@gmail.com](mailto:kkhrapko@gmail.com).

Published online July 16, 2019.



**Fig. 1.** As paternal mtDNA (A) is distributed among blastomeres not all of them receive a copy (B). Later germline is parted from soma (C) and then the sex of the germline is set (D). After birth (dotted line), somatic and male germline cells exert selection in favor of the paternal mtDNA haplotype, so that somatic cells and spermatozoa end up as a paternal/maternal mtDNA mosaic. This explains somatic heteroplasmy (E) and quasi-Mendelian inheritance (F), respectively. In the female germline, there is no selection for the paternal haplotype (9), so oocytes keep low and variable proportions of paternal mtDNA (G) (SN7.3.2).

- 1 S. Luo *et al.*, Biparental inheritance of mitochondrial DNA in humans. *Proc. Natl. Acad. Sci. U.S.A.* **115**, 13039–13044 (2018).
- 2 M. Schwartz, J. Vissing, Paternal inheritance of mitochondrial DNA. *N. Engl. J. Med.* **347**, 576–580 (2002).
- 3 J. Vissing, Paternal comeback in mitochondrial DNA inheritance. *Proc. Natl. Acad. Sci. U.S.A.* **116**, 1475–1476 (2019).
- 4 S. Lutz-Bonengel, W. Parson, No further evidence for paternal leakage of mitochondrial DNA in humans yet. *Proc. Natl. Acad. Sci. U.S.A.* **116**, 1821–1822 (2019).
- 5 A. Salas, S. Schönherr, H.-J. Bandelt, A. Gómez-Carballa, H. Weissensteiner, Extraordinary claims require extraordinary evidence in the case of asserted mtDNA biparental inheritance. [bioRxiv:10.1101/585752](https://doi.org/10.1101/585752) (25 March 2019).
- 6 M. Hirano *et al.*, Apparent mtDNA heteroplasmy in Alzheimer's disease patients and in normals due to PCR amplification of nucleus-embedded mtDNA pseudogenes. *Proc. Natl. Acad. Sci. U.S.A.* **94**, 14894–14899 (1997).
- 7 S. Luo *et al.*, Reply to Lutz-Bonengel *et al.*: Biparental mtDNA transmission is unlikely to be the result of nuclear mitochondrial DNA segments. *Proc. Natl. Acad. Sci. U.S.A.* **116**, 1823–1824 (2019).
- 8 S. Annis *et al.*, Quasi-Mendelian paternal inheritance of mitochondrial DNA: A notorious artifact, or anticipated behavior? [Figshare. https://figshare.com/s/2c0d2508a0245b5e118f](https://figshare.com/s/2c0d2508a0245b5e118f). Deposited 5 March 2019.
- 9 J. P. Jenuth, A. C. Peterson, E. A. Shoubridge, Tissue-specific selection for different mtDNA genotypes in heteroplasmic mice. *Nat. Genet.* **16**, 93–95 (1997).