

RESEARCH ARTICLE

Open Access



Evaluation of Endoglin (CD105) expression in pediatric rhabdomyosarcoma

Virginia Di Paolo¹, Ida Russo¹, Renata Boldrini², Lucilla Ravà³, Marco Pezzullo⁴, Maria Chiara Benedetti², Angela Galardi¹, Marta Colletti¹, Rossella Rota¹, Domenico Orlando¹, Alessandro Crocoli⁵, Hector Peinado⁶, Giuseppe Maria Milano^{1*} and Angela Di Giannatale^{1*}

Abstract

Background: The Intratumoral Microvessel Density (IMVD) is commonly used to quantify tumoral vascularization and is usually assessed by pan-endothelial markers, such as CD31. Endoglin (CD105) is a protein predominantly expressed in proliferating endothelium and the IMVD determined by this marker measures specifically the neovascularization. In this study, we investigated the CD105 expression in pediatric rhabdomyosarcoma and assessed the neovascularization by using the angiogenic ratio IMVD-CD105 to IMVD-CD31.

Methods: Paraffin-embedded archival tumor specimens were selected from 65 pediatric patients affected by rhabdomyosarcoma. The expression levels of CD105, CD31 and Vascular Endothelial Growth Factor (VEGF) were investigated in 30 cases (18 embryonal and 12 alveolar) available for this study. The IMVD-CD105 to IMVD-CD31 expression ratio was correlated with clinical and pathologic features of these patients.

Results: We found a specific expression of endoglin (CD105) in endothelial cells of all the rhabdomyosarcoma specimens analyzed. We observed a significant positive correlation between the IMVD individually measured by CD105 and CD31. The CD105/CD31 expression ratio was significantly higher in patients with lower survival and embryonal histology. Indeed, patients with a CD105/CD31 expression ratio < 1.3 had a significantly increased OS (88%, 95%CI, 60%–97%) compared to patients with higher values (40%, 95%CI, 12%–67%). We did not find any statistical correlation among VEGF and EFS, OS and CD105/CD31 expression ratio.

Conclusion: CD105 is expressed on endothelial cells of rhabdomyosarcoma and represent a useful tool to quantify neovascularization in this tumor. If confirmed by further studies, these results will indicate that CD105 is a potential target for combined therapies in rhabdomyosarcoma.

Keywords: Rhabdomyosarcoma, Endoglin (CD105), CD105/CD31 ratio, Prognostic marker

Background

Rhabdomyosarcoma (RMS) is the most common type of soft tissue sarcoma (STS) in children and young adults, accounting for up to 5% of all childhood cancers and for about 40% of pediatric STS [1]. Embryonal (ERMS) and alveolar (ARMS) RMS are the two major histologic subtypes. ARMS is associated with PAX3/7-FOXO1 gene fusions and with a poor prognosis, often being metastatic at diagnosis [2]. Although during the last three

decades, multimodal treatment strategies have substantially improved the prognosis of localized RMS, for metastatic disease the prognosis remains dismal [3]. Therefore, new targets and tailored therapies directed against the metastatic process are needed for these patients. The formation of new blood vessels is a requirement for tumor growth and metastatic spread and many regulators of tumor angiogenesis have been identified in different types of cancer [4]. Studies on inhibitors of angiogenesis have shown antitumor activity in pediatric sarcoma models, including RMS, mostly in combination with other drugs [5–7], and several trials showed promising results for selected clinical indications [8–10]. The quantification of tumor vasculature is a

* Correspondence: giuseppemaria.milano@opbg.net; angela.digiannatale@opbg.net

¹Department of Hematology/Oncology, Bambino Gesù Children's Hospital, IRCCS, Piazza di Sant'Onofrio, 4, 00165 Rome, Italy

Full list of author information is available at the end of the article



useful indicator of angiogenesis, by helping patients stratification prior to anti-angiogenic therapy and monitoring patient response. One often-quantified aspect of tumor vasculature is the Intratumoral Microvessel Density (IMVD). IMVD is commonly used as a surrogate marker to quantify angiogenic activity and is usually assessed by pan-endothelial markers, such as CD34 and CD31 [10–13]. However, these markers are not tumor endothelial-specific, as they are also expressed on pre-existing/mature vasculature and on large vessels [14, 15]. Recent studies have shown that IMVD assessed by detection of Endoglin (CD105) is more specifically associated with tumor neovascularization [16–20] and represents a significant prognostic marker in several tumors [19–24]. CD105 is a transforming growth factor β (TGF- β) transmembrane co-receptor required for angiogenesis [25] and is highly expressed on the surface of actively proliferating microvascular endothelial cells, forming immature, highly permeable tumor neovessels [26]. In line with its supportive role in tumor neoangiogenesis, CD105 is up-regulated by hypoxia [27–29]. The expression of CD105 has been reported on the tumor vasculature of several sarcomas, including Kaposi sarcoma, angiosarcoma, leiomyosarcoma, chondrosarcoma and gastrointestinal stromal tumor and correlated with worse survival for some of these tumors [21, 30–33]. In this study, we aimed to investigate if CD105 was expressed in pediatric RMS and assess the neovascularization by using the angiogenic ratio IMVD-CD105 to IMVD-CD31. For this purpose, we evaluated the immunohistochemical expression of CD105, CD31 and VEGF in a retrospective series of pediatric patients with RMS. In order to define the proliferation fraction of the endothelium we compared the CD105 microvessels count with CD31 immunoeexpression obtaining the CD105/CD31 expression ratio. In the cases where the CD105/CD31 expression ratio is higher, the angiogenesis is increased because CD105 marks the neofomed vessels [26] whereas CD31 is also expressed in mature vessels [18]. This ratio has been reported to have a prognostic value and be a potential predictor of response to anti-VEGF therapy [34–36].

Methods

Study population

Tumor tissue specimens from 65 patients with RMS who underwent surgical resection or biopsy of their primary tumor at the Bambino Gesù Children's Hospital from 2005 to 2016 were retrospectively reviewed. Among these, we selected 30 appropriate paraffin embedded tissue blocks. The criteria for selecting the patients were based on the availability of an adequate tumor specimens obtained before any treatment and detailed clinical information. Patients' clinical details, information on therapy and follow-up were collected retrospectively from the medical files. The median age at diagnosis was 48.5 months (range

1–199) with a sex ratio of 1. The most frequent primary site was head and neck (6 parameningeal and 2 non parameningeal patients respectively), followed by orbit (5 patients), pelvis (4 patients), genitourinary non-bladder or prostate (3 patients), extremity (2 patients), genitourinary bladder or prostate (1 patient), and other localizations (7 patients). This series include 18 patients with ERMS and 12 with ARMS. The study was approved according to local institutional guidelines.

Patient variables analyzed

Patient- and tumor-related prognostic factors considered were: age at diagnosis (favorable if ≥ 12 or < 120 months and unfavorable if < 12 or ≥ 120 months), primary tumor size (≤ 5 cm versus > 5 cm), tumor site favorable (orbit, genitourinary non bladder/prostate, head and neck non parameningeal) and unfavorable (parameningeal, extremities, genitourinary bladder-prostate and "other site"), histology (embryonal versus alveolar) and COG risk stratification [37].

Immunohistochemistry methods

The tissues were fixed with 10% formalin and embedded in paraffin. Consecutive 2.5 μm -thick serial sections were cut, deparaffinised in xylene, rehydrated and washed using double distilled water. These sections were used for immunohistochemical staining for CD105, VEGF and CD31 and human tonsils were used as positive controls for CD105, CD31 and VEGF. For staining with VEGF and CD31, sections were pretreated with DAKO PT link (PT200) in low pH solution (cod. K8005 DAKO North America, CA) for antigen retrieval. As for CD105, sections were pretreated with Proteinase K (cod. S3020 DAKO North America, CA) for 10 min at room temperature. The immunostaining was done at 4 °C overnight using the following monoclonal mouse anti-human antibodies as primary antibody: anti-CD105 (clone SN6h, 1:10, DAKO North America, CA), anti-VEGF (MS-1467-P, 1:200, Thermo Fisher, Fremont, CA), anti-CD31 (IR610, Ready-to-Use, DAKO North America, CA). As the secondary antibody, we used En Vision Flex/HRP (cod. K8024, Ready-to-Use, DAKO North America, CA). The sections were then reacted in chromogen 3,3'-diaminobenzidine to detect the peroxidase activity, counterstained with hematoxylin and mounted.

Measurement of IMVD

Hematoxylin-Eosin staining has been used by an experienced pathologist (RB) in order to select the area of the tumor, the necrotic areas were excluded. The sections were examined using a double-headed light microscope (Leica DM4 B) by two independent operators (RB and VDP), who were not aware of the clinical status of the patients. IMVD was assessed by immunostaining for

either CD31 (IMVD-CD31) or CD105 (IMVD-CD105) according to the procedure described by Weidner et al., [11, 38]. The most vascularized area (hot-spots) was identified at low magnification (40X) and then three fields were counted at high magnification (20X). We considered as a countable single microvessel any endothelial cell or endothelial-cell cluster stained and clearly separated from the adjacent microvessels, tumor cells and other connective-tissue elements. The mean of the vessels in three fields was used as CD105 IMVD or CD31 IMVD. CD105 IMVD and CD31 IMVD have been evaluated in two different serial slides, within the same “hot spot” area. In order to define the proliferation fraction of the endothelium, we calculated the CD105/CD31 ratio dividing the IMVD of CD105 by the IMVD of CD31, as previously described [34–36]. Indeed, since CD31 is a pan-endothelial marker and CD105 is primarily expressed by proliferating endothelial cells, this ratio specifically measures the fraction of proliferating endothelial cells.

Evaluation of VEGF

The VEGF expression was estimated according to the percentage of immunoreactive cells in a total of 1000 cells. The tumors were classified into 4 categories based on VEGF staining: negative (0), weak (1+), moderate (2+) and strong (3+). The percentage of positive cells was defined as sporadic (positive cells $\leq 1\%$ and $< 10\%$), focal (positive cells $\leq 10\%$ and $< 50\%$) or diffused (positive cells $\geq 50\%$). The immuno-histochemical scores were recorded as score 0 (no immunoreactivity), score 1 (1+ with sporadic or focal distribution), score 2 (1+ with diffused distribution or 2+ or 3+ with sporadic distribution), score 3 (2+ with focal or diffused distribution), score 4 (3+ with focal or diffused distribution) [39].

Statistical analysis

Categorical data was represented as counts and proportions, and continuous data as mean and standard deviation or median and range. We analyzed the overall survival (OS) and event-free survival (EFS) defined as the time from diagnosis until the date of death and the date of disease relapse/progression, respectively. The follow-up period was calculated from the date of diagnosis until the last follow-up visit. Correlation between CD105 and CD31 IMVD was examined using the Spearman's Rho. The ROC (Receiving operation curve) analysis was used in order to find an appropriate cut-off of CD105/CD31 ratio discriminating between death and survival, and event (disease relapse/progression) and non event in terms of sensibility and specificity.

Univariable analysis of time to event data (OS and EFS) was performed through the Kaplan Meier method, Log-rank test and Cox proportional hazard model.

Relationships between the CD105/CD31 ratio and clinico-pathological data were assessed using univariable quantile regression analysis. *P* values less than 0.05 were considered to be statistically significant. Data was analyzed using the STATA software version 13.1.

Results

Clinico-pathological features of RMS patients

Patients' characteristics are detailed in Table 1.

Patients were staged according to COG-STS risk stratification [37]. PAX3/PAX7-FKHR fusion gene transcripts were evaluated in 9 cases of 12 ARMS and 9 cases of 18 ERMS. PAX3-FKHR fusion gene was positive in 8 ARMS cases, and PAX7-FKHR in 1 ARMS case. None of PAX3/PAX7-FKHR fusion gene was detected in the ERMS examined. The median follow-up of patients was 5 years (range 0.28–11.12 years). Eight patients died of disease (median time from diagnosis 16.5 months, range 5–64). Patients #6, #17 and #24 presented a short follow-up since they died after 5, 7 and 10 months respectively due to rapid disease progression. The immunostaining was performed on pretreatment tumor biopsy specimens. The expression of CD31 and CD105 was localized in endothelial cells in all the specimens analyzed and not expressed by tumor cells. In the tumor CD105 was specifically associated with immature vessels which showed a stronger positivity compared to the large vessels (Additional file 1: Figure S1). VEGF expression was detected mainly in the cytoplasm of the tumor cells or endothelium (Fig. 1). Nineteen tumors (63.3%) showed a VEGF staining score of 1–2, while 11 (36.7%) showed a score of 3–4.

The ratio of IMVD-CD105 to IMVD-CD31 in RMS primary samples

Analysis of CD105 and CD31 expression demonstrated that the average of CD105-IMVD was not statistically, significantly higher than CD31-IMVD in RMS tissue ($P = 0.122$ Wilcoxon signed-rank test). We observed a statistically significant positive correlation between the IMVD individually measured by the two markers (Spearman's rho = 0.86, $P = 0.05$), (Fig. 2). CD105/CD31 expression ratio in the tumor specimens ranged from 0.32% to 2.35%, with a median value of 1% and a mean of 1.15% (Table 1). The ROC curve analysis was used to determine the optimal cut-off of CD105/CD31 ratio (Fig. 3). EFS showed a cut-off point value of 0.9 with a 90.9% sensitivity and 52.6% specificity (Fig. 3a). OS had a cut-off point value of 1.3 with a 71.4% sensitivity and 78.2% specificity (Fig. 3b). Our analysis demonstrated that ten patients with a CD105/CD31 expression ratio equal or higher than 0.9 (50% of patients in this group) had relapse or disease progression. Only one patient (#6) with a ratio lower than 0.9 (10%) experienced disease progression, but had metastatic disease, which is per se a

Table 1 Characteristics of the 30 patients with Rhabdomyosarcoma

Pt	Age (mos)	Gender	Histology	Primary site	Primary size (cm)	Metastasis	Nodes	IRS ^a Group	COG Risk Groups	EpSSG Risk Groups	Status	CD105/CD31 ratio
1	83	M	ARMS	Extremity	> 5	No	N0	III	Intermediate	HR/G	NED	1.1611
2	65	F	ERMS	Pelvis	> 5	No	N1	III	Intermediate	HR/F	NED	0.6825
3	43	M	ERMS	Abdomen	> 5	No	N0	III	Intermediate	HR/E	NED	0.7466
4	82	F	ARMS	Extremity	> 5	No	N0	III	Intermediate	HR/G	NED	1.0460
5	55	M	ERMS	GU non BP	≤ 5	No	N0	I	Low	LR	NED	1.4292
6	41	M	ERMS	Orbit	> 5	Bone/BM	N0	IV	High	META	DOD	0.5133
7	28	F	ARMS	HN PM	≤ 5	No	N0	II	Intermediate	HR/G	NED	1.4225
8	13	M	ARMS	Orbit	≤ 5	No	N0	III	Intermediate	HR/G	NED	1.7949
9	11	F	ERMS	HN PM	≤ 5	No	N1	III	Intermediate	HR/F	DOD	1.3006
10	37	F	ERMS	GU non BP	≤ 5	No	N0	III	Low	SR/C	NED	0.8942
11	116	F	ERMS	Pelvis	> 5	Lung	Nx	IV	High	META	DOD	1.0158
12	176	M	ARMS	Retroperitoneum	> 5	Lung	N1	IV	High	META	DOD	1.5517
13	48	F	ERMS	GU BP	> 5	No	N0	III	Intermediate	HR/E	NED	1.8627
14	49	F	ARMS	HN PM	> 5	No	N1	III	Intermediate	VERY HR	NED	1.2461
15	17	M	ARMS	HN non PM	≤ 5	No	N0	II	Intermediate	HR/G	NED	1.0354
16	1	M	ERMS	Pelvis	> 5	No	N0	II	Low	HR/E	NED	0.8868
17	1	F	ARMS	HN PM	≤ 5	Multiple ^b	N1	IV	High	META	DOD	1.5608
18	16	F	ARMS	Chest wall	≤ 5	No	N0	II	Intermediate	HR/G	NED	0.8651
19	24	M	ARMS	Orbit	≤ 5	No	N0	III	Intermediate	HR/G	DOD	2.0024
20	135	M	ARMS	Chest wall	> 5	No	N1	III	Intermediate	VERY HR	DOD	1.9190
21	26	F	ERMS	Biliary tracts	≤ 5	No	N0	III	Low	SR/D	NED	1.1058
22	97	M	ERMS	Orbit	> 5	No	N0	III	Low	SR/C	NED	1.0274
23	154	M	ERMS	Orbit	> 5	No	N0	II	Low	SR/C	AWD	0.9020
24	14	F	ERMS	Abdomen	> 5	No	N1	I	Low	HR/F	DOD	2.3542
25	23	F	ERMS	Pelvis	> 5	Lung/Bone	N1	IV	High	META	NED	0.7117
26	199	F	ERMS	HN PM	> 5	No	N0	III	Intermediate	HR/E	AWD	0.9333
27	176	M	ARMS	GU non BP	≤ 5	Bone	N1	IV	High	VERY HR	NED	0.5914
28	106	F	ERMS	HN PM	> 5	No	N1	III	Intermediate	HR/F	AWD	1.0217
29	146	M	ERMS	HN non PM	> 5	No	N1	III	Low	HR/F	AWD	0.7733
30	189	M	ERMS	Extremity	> 5	No	N0	III	Intermediate	HR/E	AWD	0.3281

(Pt patient, mos months, M male, F female, ARMS alveolar rhabdomyosarcoma, ERMS embryonal rhabdomyosarcoma, GU non BP genitourinary non-bladder or prostate, HN non PM head and neck non-parameningeal, GU BP genitourinary bladder or prostate, HN PM Head and neck parameningeal, BM bone-marrow, NO no clinical or pathological node involvement, N1 clinical or pathological nodal involvement, NX No information on lymph node involvement, HR High Risk, META metastatic, LR Low Risk, SR Standard Risk, NED no evidence of disease, DOD died of disease, AWD alive with disease, a: post-surgical stage according to Intergroup Rhabdomyosarcoma Study (IRS) grouping system41; b: subcutaneous, liver, pancreas, lung, bone-marrow and paravertebral lesion at L2-L3 level; COG, Children's Oncology Group)

poor prognostic factor. These results suggest that the CD105/CD31 expression ratio in the primary tumor could be associated with disease aggressiveness.

Correlation between prognostic factors and outcome in RMS patients

We then investigated the relationship amongst EFS or OS, selected prognostic clinico-pathological parameters (age at diagnosis, tumor size, primary site, histology, COG risk stratification) and the angiogenic CD105/CD31 ratio. As summarized in Table 2, the EFS and OS of patients with

high risk RMS, according to COG stratification, resulted dismal, as it was previously reported [37].

Furthermore, in the univariable Cox proportional hazard regression the CD105/CD31 expression ratio resulted to be related with decreased OS ($P = 0.03$) [38].

Relationship of CD105/CD31 expression ratio with clinico-pathological characteristics and outcome

Based on ROC curves cut-off values, Kaplan-Meier analysis showed that patients with a value of the CD105/CD31 expression ratio < 1.3 had a significantly increased OS (88%, 95%CI = 60%–97%) compared to patients with

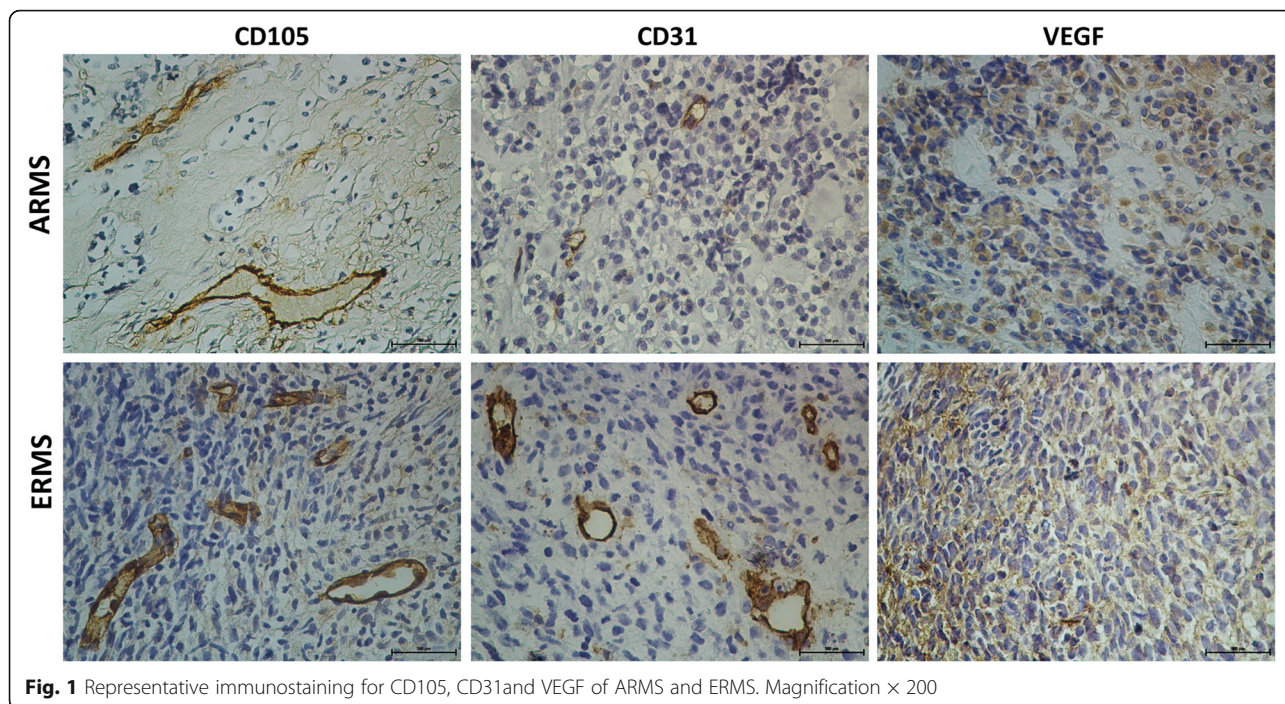


Fig. 1 Representative immunostaining for CD105, CD31 and VEGF of ARMS and ERMS. Magnification × 200

higher values (40%, 95%CI = 12%–67%; $P = 0.013$ by the log-rank test), (Fig. 4b). The estimated 5-year EFS was 91% (95%CI = 51%–98%) for patients with a CD105/CD31 ratio lower than 0.9 compared with 45% (95%CI = 22%–65%) for those with a ratio higher or equal to 0.9 ($P = 0.054$ by the log-rank test) (Fig. 4a). We further evaluated VEGF expression in order to correlate this marker, which is upregulated in RMS [39–43], with the neo-angiogenic ratio. Determinants of CD105/CD31 expression ratio were assessed by univariable quantile regression analysis (Table 3). This ratio was significantly

associated with the patients’ survival ($P = 0.016$) and the embryonal histology ($P = 0.019$).

Discussion

Neo-angiogenesis has long been implicated in generating a microenvironment suitable for tumor growth and metastatic spread [44]. Several pro-angiogenic factors have been described and among them VEGF appears to play a central role in the activation of angiogenesis in various cancer [45, 46]. Several efforts have been made to develop therapies focused on the inhibition of the

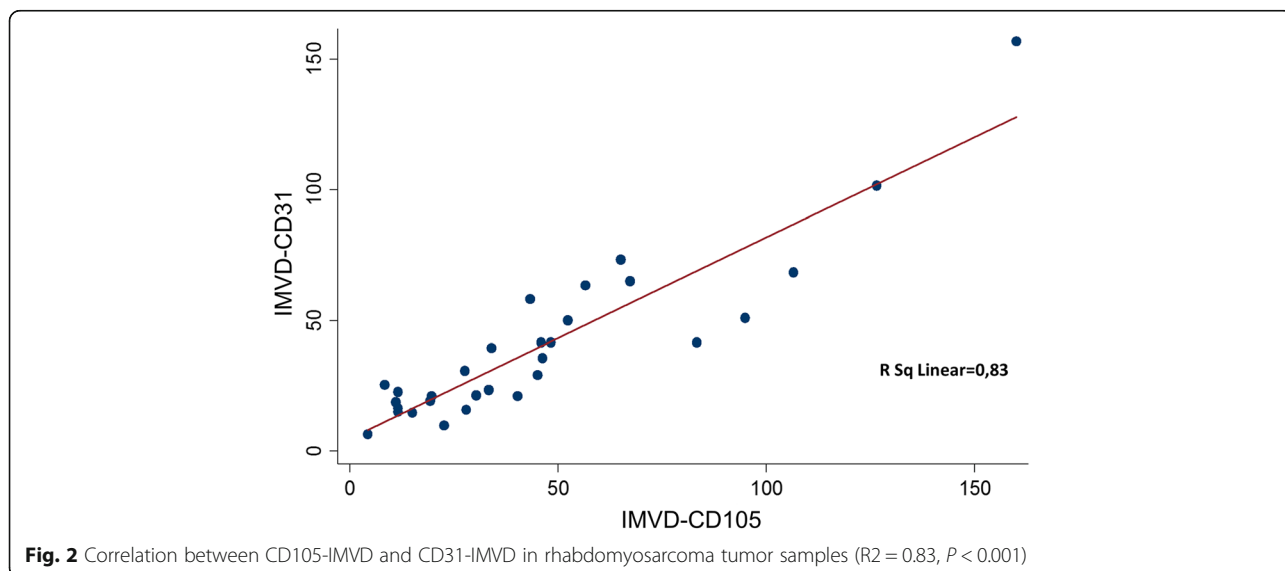
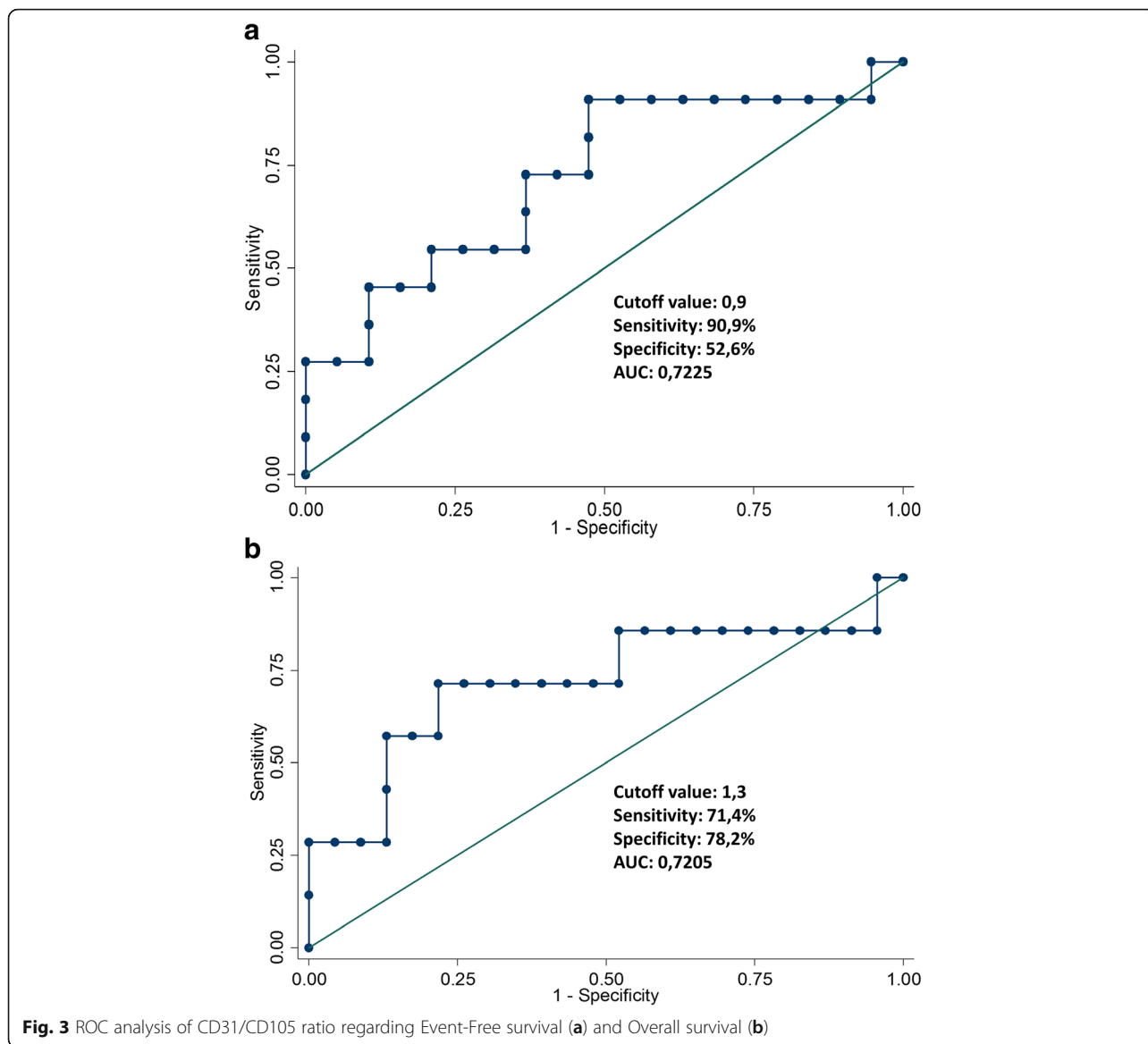


Fig. 2 Correlation between CD105-IMVD and CD31-IMVD in rhabdomyosarcoma tumor samples ($R^2 = 0.83$, $P < 0.001$)



VEGF signaling pathway also in RMS [47, 48]. However these drugs led to transient responses and the complementary/dual inhibition of non-VEGF angiogenic pathways might represent a way to improve anti-angiogenic therapy. A phase I study using an anti-endoglin monoclonal antibody (TRC105) in combination with bevacizumab in adults with advanced cancers showed good tolerance and clinical activity in a VEGF inhibitor-refractory population [49]. A trial testing TRC105 in combination with pazopanib in patients with STS (≥ 12 years old) is currently ongoing [50]. In this context, methods which enable to quantify tumor angiogenesis are useful surrogate markers of angiogenic activity and response to therapy, and might help stratify patients with RMS for treatment. The IMVD is the most commonly used parameter to quantify intra-tumoral

neovascularization and is measured by pan-endothelial markers, such as CD31. CD105 presents a higher specificity for new developing vessels and recent studies have shown that IMVD as determined by this marker has a higher prognostic impact than CD31 in several tumors [21–23]. In particular, IMVD ratio of CD105/CD31 expression, had been used to specifically assess neovascularization showing a prognostic value [34–36]. In the present study, we analyzed for the first time, the CD105 immunoexpression in pediatric RMS and quantified the presence of proliferating endothelial cells by using the CD105/CD31 expression ratio. CD105 was detected in small tumor capillary-like vessels, whereas CD31 presented a more diffused expression in endothelial cells. The significant positive correlation found between the IMVD measured by the two markers is coherent with

Table 2 Univariable Cox proportional hazards regression for Event Free Survival and Overall Survival

Variables	EFS			OS		
	Hazard ratio	IC (95%)	P	Hazard ratio	IC (95%)	P
Age at diagnosis						
≥ 1 < 10 (ref)	–	–	–	–	–	–
< 1 ≥ 10	2.58	0.78;8.53	0.121	3.02	0.74; 12.25	0.121
Histology						
ARMS (ref)	–	–	–	–	–	–
ERMS	0.63	0.19; 2.06	0.443	0.86	0.21; 3.46	0.831
Tumor size						
≤ 5 cm (ref)	–	–	–	–	–	–
> 5 cm	1.66	0.44;6.28	0.453	2.17	0.43; 10.87	0.344
Primary site (location)						
Favorable (ref)	–	–	–	–	–	–
Unfavorable	1.11	0.32;3.80	0.867	1.14	0.27; 4.80	0.851
COG Group						
Low (ref)	–	–	–	–	–	–
Intermediate	2.93	0.35;24.41	0.319	1.13	0.11; 10.98	0.914
High	9.76	1.04;91.19	0.046	11.59	1.19; 112.25	0.034
VEGF score						
1–2 (ref)	–	–	–	–	–	–
3–4	0.54	0.14;2.06	0.373	0.46	0.93; 2.31	0.349
CD105/CD31 Ratio						
< 0.9 (ref)	–	–	–	–	–	–
≥ 0.9	5.31	0.75;46.25	0.090	–	–	–
CD105/CD31 Ratio						
< 1.3 (ref)	–	–	–	–	–	–
≥ 1.3	–	–	–	5.89	1.18;29.2	0.030

(Ref Reference, IC interval confidence, COG Children's Oncology Group, ERMS embryonal rhabdomyosarcoma, ARMS alveolar rhabdomyosarcoma, VEGF Vascular Endothelial Growth Factor, CD105 Endoglin). In boldface the values statistically significant

the association between CD105 expression and other endothelial markers, such as CD31 and CD34, already described in other tumors [51, 52]. We also evaluated whether a correlation between this neoangiogenic ratio and clinic-pathological variables exists. Several prognostic factors, such as the age at diagnosis, primary tumor size, primary site, histology, post-surgical stage and presence or absence of distant metastases are currently used for risk-adapted treatment approaches in clinical trials of RMS patients [53]. Using these parameters, in the univariable survival analysis, we found that the advanced disease, classified according to the COG risk stratification, was a significant predictor of worse OS and EFS. In line with previously reported works, our study confirms that metastatic disease is the main prognostic factor in RMS [3]. The ROC curve for the OS indicated a cutoff point of 1.3, which was used to separate patients with good and poor prognosis. A value of the CD105/CD31 expression ratio < 1.3 was associated with a significantly

better patients' OS. These findings suggest that neovascularization could be an indicator of prognosis in patients with RMS and are supported by the correlation described between the CD105/CD31 expression ratio and aggressive phenotypes in other tumors [35]. Indeed, it has been already reported that IMVD quantified by CD105 correlate with poor survival in patients with breast carcinoma, non-small cell lung cancer and hepatocellular carcinoma [13, 54, 55]. Interestingly, when the histotype was specifically considered, we found that the ERMS correlated significantly with neo-angiogenesis. Kuda et al., previously described that IMVD, assessed by CD31, was higher in ERMS than ARMS [56]. We speculate that this association could be related to the different growth rate displayed by these two RMS histotypes. Indeed, although angiogenesis is a key process activated during cancer invasion and metastasis, highly aggressive histotypes are also able to support their growth through a process known as vasculogenic mimicry (VM) [57].

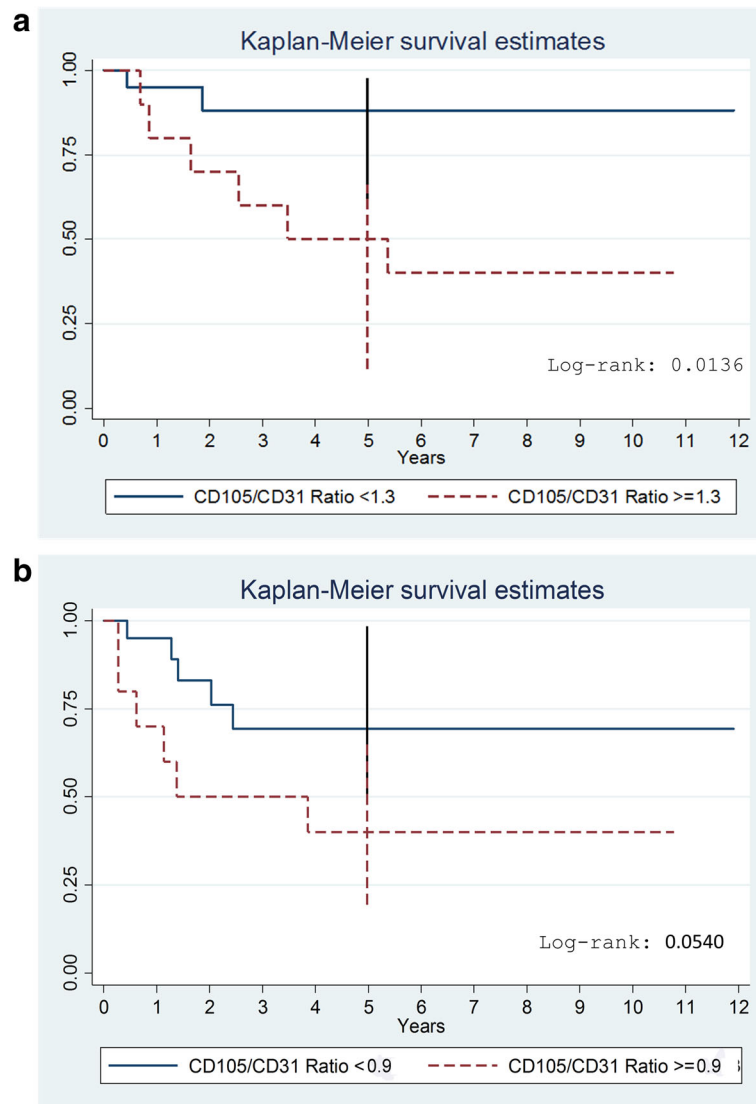


Fig. 4 Kaplan-Meier curve for Event-Free survival (a) and Overall survival (b) according to CD105/CD31 ratio groups

The generation of non-endothelialized vessel-like channels allows the perfusion of a variety of tumors, enabling them to aggressively proliferate and metastasize [58]. The VM channels are not lined by endothelial cells, but by tumor cells instead, and therefore are not stained by endothelial markers, including CD31 [59]. A higher incidence of VM has been described in tumors presenting necrosis, as well as in ARMS, and has been associated with poor prognosis [60, 61]. The faster growth of ARMS compared to ERMS may explain the different pattern of neovessels in the two variants. No statistically significant differences in CD105/CD31 expression ratio were encountered with respect to age, tumor size, primary tumor location, COG risk groups and VEGF. Despite VEGF overexpression has been reported to be associated with prognosis in RMS patients [42], data

regarding the correlation amongst IMVD, VEGF expression and prognosis has shown conflicting results in several tumors including STS and RMS [39, 56, 62–64].

In conclusion, this small proof-of-concept study suggests that CD105 is expressed in endothelial cells of pediatric RMS and that CD105/CD31 expression ratio might be useful to measure the proportion of proliferating endothelial cells in this tumor. Despite the small cohort of patients studied, these data indicate that a high value of CD105/CD31 expression ratio could be related with a “pro-angiogenic” RMS subset of patients with low OS.

Conclusions

If further studies confirm these results in larger cohorts of patients, CD105 may also represent a potential

Table 3 Factors associated with CD105/CD31 expression ratio – univariable analysis

Variables	Number of patients (%)	Univariable Analysis		
		Coefficient	IC	P value
≥ 1 < 10 (<i>ref</i>)	21 (70)	–	–	–
< 1 ≥ 10	9 (30)	– 0.10	– 0.77;0.56	0.757
Histology				
ARMS (<i>ref</i>)	12 (40)	–	–	–
ERMS	18 (60)	– 0.49	– 0.89;0.08	0.019
Tumor size				
≤ 5 cm (<i>ref</i>)	10 (33)	–	–	–
> 5 cm	20 (77)	– 0.28	– 0.83;0.27	0.313
Primary site (location)				
Favorable (<i>ref</i>)	12 (40)	–	–	–
Unfavorable	18 (60)	0.01	– 0.45;0.47	0.962
COG Risk Group				
Low (<i>ref</i>)	8 (27)	–	–	–
Intermediate	16 (53)	0.13	– 0.53;0.79	0.682
High	6 (20)	– 0.01	– 0.84;0.81	0.977
VEGF score				
1–2 (<i>ref</i>)	19 (63)	–	–	–
3–4	11 (37)	0.41	– 0.04;0.85	0.072
Status				
Alive (<i>ref</i>)	22 (73)	–	–	–
Dead	8 (27)	0.53	0.10; 0.95	0.016

(*Ref* Reference, *IC* interval confidence, *COG* Children's Oncology Group, *ERMS* embryonal rhabdomyosarcoma, *ARMS* alveolar rhabdomyosarcoma, *VEGF* Vascular Endothelial Growth Factor, *CD105* Endoglin). In boldface the values statistically significant

therapeutic target as part of combined therapy in RMS. In particular, an inter-institutional cooperative study would be advisable considering the low frequency of this tumor in the pediatric population. This type of large study could also be a tool to elucidate if the CD105/CD31 expression ratio may be useful for patient's stratification and/or evaluate response to therapy.

Additional file

Additional file 1: Figure S1. Immunostaining of CD105 for ERMS and ARMS. Magnification × 200. (PDF 266 kb)

Abbreviations

AIEOP: Italian Association of Pediatric Hematology/Oncology; ARMS: Alveolar Rhabdomyosarcoma; CD105: Endoglin; COG: Children's Oncology Group; EFS: Event-Free Survival; EpSSG: European Pediatric Soft Tissue Sarcoma Study Group; ERMS: Embryonal Rhabdomyosarcoma; IMVD: Intratumoral Microvessel Density; OS: Overall Survival; RMS: Rhabdomyosarcoma; STS: Soft Tissue Sarcoma; TGF-β: Transforming Growth Factor beta; VEGF: Vascular Endothelial Growth Factor; VM: Vasculogenic Mimicry

Acknowledgements

We thank Professor Franco Locatelli for critical reading this paper and for his suggestions. We would also like to thank the children's parents, who gave their informed consent for publication and "Il cuore grande di Flavio" Onlus. Dr. Marta Colletti is a post-doctoral fellow of the Umberto Veronesi Foundation. To Valentina Polcini for proofreading.

Funding

Not applicable

Availability of data and materials

All data generated and analyzed during this study are included in this published article.

Authors' contributions

VDP help in the histological revision, analyzed the results and helped to draft the manuscript, IR collected the data of patients, RB performed histological diagnosis, LR performed the statistical analysis, MP and MCB cut the paraffin blocs and performed immunohistochemistry, AG helped to perform the figures in the manuscript, MC helped to draft the manuscript, RR reviewed the manuscript, DO reviewed the manuscript, AC helped to select the cases, HP reviewed the manuscript, GMM selected the cases and helped to draft the manuscript, ADG designed the study, interpreted the results and drafted the manuscript. All authors read and approved the final manuscript.

Ethics approval and consent to participate

Informed consent to participate at the study was obtained from parent or legal guardian of the patient.

Consent for publication

Written informed consent for publication of their clinical details and clinical images was obtained from the parent or guardian of the patient.

Competing interests

The authors declare that they have no competing interests.

Publisher's Note

Springer Nature remains neutral with regard to jurisdictional claims in published maps and institutional affiliations.

Author details

¹Department of Hematology/Oncology, Bambino Gesù Children's Hospital, IRCCS, Piazza di Sant'Onofrio, 4, 00165 Rome, Italy. ²Department of Laboratories - Pathology Unit, Bambino Gesù Children's Hospital, IRCCS, Piazza di Sant'Onofrio, 4, 00165 Rome, Italy. ³Clinical Epidemiology, Bambino Gesù Children's Hospital, IRCCS, Viale Ferdinando Baldelli 41, 00146 Rome, Italy. ⁴Core Facilities, Bambino Gesù Children's Hospital, IRCCS, Viale San Paolo 15, 00146 Rome, Italy. ⁵General Pediatric and Thoracic Surgery, Bambino Gesù Children's Hospital, IRCCS, Piazza di Sant'Onofrio, 4, 00165 Rome, Italy. ⁶Microenvironment and Metastasis Group, Molecular Oncology Program, Spanish National Cancer Research Centre (CNIO), C/ Melchor Fernández Almagro, 3, 28029 Madrid, Spain.

Received: 26 October 2017 Accepted: 20 December 2017

Published online: 05 January 2018

References

- Gurney JG, Young JL Jr, Roffers SD, Smith MA, Bunin GR. Soft tissue sarcomas. In: LAG R, Smith MA, Gurney JG, et al, editors. Cancer incidence and survival among children and adolescents: United States SEER program 1975–1995. Bethesda: National Cancer Institute, SEER Program; 1999. p. 111–23. NIH Pub. No. 99-4649.
- Sorensen PH, Lynch JC, Qualman SJ, et al. PAX3-FKHR and PAX7-FKHR gene fusions are prognostic indicators in alveolar rhabdomyosarcoma: a report from the children's oncology group. *J Clin Oncol.* 2002;20:2672–9.
- McDowell HP, Foot AB, Ellershaw C, Machin D, Giraud C, Bergeron C. Outcomes in paediatric metastatic rhabdomyosarcoma: results of the International Society of Paediatric Oncology (SIOP) study MMT-98. *Eur J Cancer.* 2010;46(9):1588–95.

4. de Castro JG, Puglisi F, de Azambuja E, El Saghir NS, Awada A. Angiogenesis and cancer: a cross-talk between basic science and clinical trials (the "do ut des" paradigm). *Crit Rev Oncol Hematol*. 2006;59(1):40–50.
5. Maris JM, Courtright J, Houghton PJ, Morton CL, Kolb EA, Lock R, Tajbakhsh M, Reynolds CP, Keir ST, Wu J, Smith MA. Initial testing (stage 1) of sunitinib by the pediatric preclinical testing program. *Pediatr Blood Cancer*. 2008;51(1):42–8.
6. Kumar S, Mokhtari RB, Sheikh R, Wu B, Zhang L, Xu P, Man S, Oliveira ID, Yeager H, Kerbel RS, Baruchel S. Metronomic oral topotecan with pazopanib is an active antiangiogenic regimen in mouse models of aggressive pediatric solid tumor. *Clin Cancer Res*. 2011;17(17):5656–67.
7. Keir ST, Morton CL, Wu J, Kurmasheva RT, Houghton PJ, Smith MA. Initial testing of the multitargeted kinase inhibitor pazopanib by the pediatric preclinical testing program. *Pediatr Blood Cancer*. 2012;59(3):586–8.
8. Navid F, Baker SD, McCarville MB, Stewart CF, Billups CA, Wu J, Davidoff AM, Spunt SL, Furman WL, McGregor LM, Hu S, Panetta JC, Turner D, Fofana D, Reddick WE, Leung W, Santana VM. Phase I and clinical pharmacology study of bevacizumab, sorafenib, and low-dose cyclophosphamide in children and young adults with refractory/recurrent solid tumors. *Clin Cancer Res*. 2013;19(1):236–46.
9. Glade Bender JL, Lee A, Reid JM, Baruchel S, Roberts T, Voss SD, Wu B, Ahern CH, Ingle AM, Harris P, Weigel BJ, Blaney SM. Phase I pharmacokinetic and pharmacodynamic study of pazopanib in children with soft tissue sarcoma and other refractory solid tumors: a children's oncology group phase I consortium report. *J Clin Oncol*. 2013;31(24):3034–43.
10. Giatromanolaki A, Koukourakis MI, Theodossiou D, Barbatis K, O'Byrne K, Harris AL, Gatter KC. Comparative evaluation of angiogenesis assessment with anti-factor-VIII and anti-CD31 immunostaining in non-small cell lung cancer. *Clin Cancer Res*. 1997;3(12 Pt 1):2485–92.
11. Weidner N. Current pathologic methods for measuring intratumoral microvessel density within breast carcinoma and other solid tumors. *Breast Cancer Res Treat*. 1995;36(2):169–80. Review
12. Offersen BV, Pfeiffer P, Hamilton-Dutoit S, Overgaard J. Patterns of angiogenesis in nonsmall-cell lung carcinoma. *Cancer*. 2001;91(8):1500–9.
13. Tanaka F, Otake Y, Yanagihara K, Kawano Y, Miyahara R, Li M, Yamada T, Hanaoka N, Inui K, Wada H. Evaluation of angiogenesis in non-small cell lung cancer: comparison between anti-CD34 antibody and anti-CD105 antibody. *Clin Cancer Res*. 2001;7(11):3410–5.
14. de la Taille A, Katz AE, Bagiella E, et al. Microvessel density as a predictor of PSA recurrence after radical prostatectomy. A comparison of CD34 and CD31. *Am J Clin Pathol*. 2000;113:555–62.
15. Tomisaki S, Ohno S, Ichiyoshi Y, Kuwano H, Machra Y, Sugimachi K. Microvessel quantification and its possible relation with liver metastasis in colorectal cancer. *Cancer*. 1996;77:1772–8.
16. Behrem S, Zarkovic K, Eskinja N, Jonjic N. Endoglin is a better marker than CD31 in evaluation of angiogenesis in glioblastoma. *Croat Med J*. 2005;46(3):417–22.
17. Yang LY, Lu WQ, Huang GW, Wang W. Correlation between CD105 expression and postoperative recurrence and metastasis of hepatocellular carcinoma. *BMC Cancer*. 2006;6:110.
18. Li SL, Gao DL, Zhao ZH, et al. Correlation of matrix metalloproteinase suppressor genes RECK, VEGF, and CD105 with angiogenesis and biological behavior in esophageal squamous cell carcinoma. *World J Gastroenterol*. 2007;13:6076–81.
19. Miyata Y, Sagara Y, Watanabe S, et al. CD105 is a more appropriate marker for evaluating angiogenesis in urothelial cancer of the upper urinary tract than CD31 or CD34. *Virchows Arch*. 2013;46:673–9.
20. Ding S, Li C, Lin S, Yang Y, Liu D, Han Y, Zhang Y, Li L, Zhou L, Kumar S. Comparative evaluation of microvessel density determined by CD34 or CD105 in benign and malignant gastric lesions. *Hum Pathol*. 2006;37(7):861–6.
21. Basilio-de-Oliveira RP, Pannain VL. Prognostic angiogenic markers (endoglin, VEGF, CD31) and tumor cell proliferation (Ki67) for gastrointestinal stromal tumors. *World J Gastroenterol*. 2015;21(22):6924–30.
22. Cavar S, Jelašić D, Seiwerth S, Milošević M, Hutinec Z, Mišić M. Endoglin (CD 105) as a potential prognostic factor in neuroblastoma. *Pediatr Blood Cancer*. 2015;62(5):770–5.
23. Sugita Y, Takase Y, Mori D, Tokunaga O, Nakashima A, Shigemori M. Endoglin (CD 105) is expressed on endothelial cells in the primary central nervous system lymphomas and correlates with survival. *J Neuro-Oncol*. 2007;82(3):249–56.
24. Zhou D, Cheng SQ, Ji HF, Wang JS, Xu HT, Zhang GQ, Pang D. Evaluation of protein pigment epithelium-derived factor (PEDF) and microvessel density (MVD) as prognostic indicators in breast cancer. *J Cancer Res Clin Oncol*. 2010;136(11):1719–27.
25. Li DY, Sorensen LK, Brooke BS, Urness LD, Davis EC, Taylor DG, Boak BB, Wendel DP. Defective angiogenesis in mice lacking endoglin. *Science*. 1999;284(5419):1534–7.
26. Seon BK, Haba A, Matsuno F, Takahashi N, Tsujie M, She X, Harada N, Uneda S, Tsujie T, Toi H, Tsai H, Haruta Y. Endoglin-targeted cancer therapy. *Curr Drug Deliv*. 2011;8(1):135–43.
27. Bockhorn M, Tsuzuki Y, Xu L, Frilling A, Broelsch CE, Fukumura D. Differential vascular and transcriptional responses to anti-vascular endothelial growth factor antibody in orthotopic human pancreatic cancer xenografts. *Clin Cancer Res*. 2003;9(11):4221–6.
28. Davis TW, O'Neal JM, Pagel MD, Zweifel BS, Mehta PP, Heuvelman DM, Masferrer JL. Synergy between celecoxib and radiotherapy results from inhibition of cyclooxygenase-2-derived prostaglandin E2, a survival factor for tumor and associated vasculature. *Cancer Res*. 2004;64(1):279–85.
29. Anderberg C, Cunha SI, Zhai Z, Cortez E, Pardali E, Johnson JR, Franco M, Páez-Ribes M, Cordiner R, Fuxe J, Johansson BR, Goumans MJ, Casanovas O, ten Dijke P, Arthur HM, Pietras K. Deficiency for endoglin in tumor vasculature weakens the endothelial barrier to metastatic dissemination. *J Exp Med*. 2013;210(3):563–79.
30. Ciernik IF, Krayenbühl Ciernik BH, Cockerell CJ, Minna JD, Gazdar AF, Carbone DP. Expression of transforming growth factor beta and transforming growth factor beta receptors on AIDS-associated Kaposi's sarcoma. *Clin Cancer Res*. 1995;1(10):1119–24.
31. Hara H. Endoglin (CD105) and claudin-5 expression in cutaneous angiosarcoma. *Am J Dermatopathol*. 2012;34(7):779–82.
32. Mitsui H, Shibata K, Mano Y, Suzuki S, Umezumi T, Mizuno M, Yamamoto E, Kajiyama H, Kotani T, Senga T, Kikkawa F. The expression and characterization of endoglin in uterine leiomyosarcoma. *Clin Exp Metastasis*. 2013;30(6):731–40.
33. Boeuf S, Bovée JV, Lehner B, van den Akker B, van Ruler M, Cleton-Jansen AM, Richter W. BMP and TGFbeta pathways in human central chondrosarcoma: enhanced endoglin and Smad 1 signaling in high grade tumors. *BMC Cancer*. 2012;12:488.
34. Takase Y, Kai K, Masuda M, Akashi M, Tokunaga O. Endoglin (CD105) expression and angiogenesis status in small cell lung cancer. *Pathol Res Pract*. 2010;206(11):725–30.
35. Bauman RM, Huang W, Lee MH, Abel EJ. Neovascularity as a prognostic marker in renal cell carcinoma. *Hum Pathol*. 2016;57:98–105.
36. Tachezy M, Reichelt U, Melenberg T, Gebauer F, Izbicki JR, Kaifi JT. Angiogenesis index CD105 (endoglin)/CD31 (PECAM-1) as a predictive factor for invasion and proliferation in intraductal papillary mucinous neoplasm (IPMN) of the pancreas. *Histol Histopathol*. 2010;25(10):1239–46.
37. Malempati S, Hawkins DS. Rhabdomyosarcoma: review of the Children's oncology group (COG) soft-tissue sarcoma committee experience and rationale for current COG studies. *Pediatr Blood Cancer*. 2012;59(1):5–10.
38. Weidner N. Chapter 14. Measuring intratumoral microvessel density. *Methods Enzymol*. 2008;444:305–23.
39. Miyoshi K, Kohashi K, Fushimi F, Yamamoto H, Kishimoto J, Taguchi T, Iwamoto Y, Oda Y. Close correlation between CXCR4 and VEGF expression and frequent CXCR7 expression in rhabdomyosarcoma. *Hum Pathol*. 2014;45(9):1900–9.
40. Onisto M, Slongo ML, Gregnanin L, Gastaldi T, Carli M, Rosolen A. Expression and activity of vascular endothelial growth factor and metalloproteinases in alveolar and embryonal rhabdomyosarcoma cell lines. *Int J Oncol*. 2005;27(3):791–8.
41. Gee MF, Tsuchida R, Eichler-Jonsson C, Das B, Baruchel S, Malkin D. Vascular endothelial growth factor acts in an autocrine manner in rhabdomyosarcoma cell lines and can be inhibited with all-trans-retinoic acid. *Oncogene*. 2005;24(54):8025–37.
42. Barber TD, Barber MC, Tomescu O, Barr FG, Ruben S, Friedman TB. Identification of target genes regulated by PAX3 and PAX3-FKHR in embryogenesis and alveolar rhabdomyosarcoma. *Genomics*. 2002;79(3):278–84.
43. Wang W, Slevin M, Kumar S, Kumar P. The cooperative transforming effects of PAX3-FKHR and IGF-II on mouse myoblasts. *Int J Oncol*. 2005;27(4):1087–96.
44. Folkman J, Watson K, Ingber D, Hanahan D. Induction of angiogenesis during the transition from hyperplasia to neoplasia. *Nature*. 1989;339:58–61.

45. Liu CD, Tilch L, Kwan D, McFadden DW. Vascular endothelial growth factor is increased in ascites from metastatic pancreatic cancer. *J Surg Res.* 2002;102(1):31–4.
46. Poon RT, Fan ST, Wong J. Clinical implications of circulating angiogenic factors in cancer patients. *J Clin Oncol.* 2001;19:1207–25.
47. Chisholm JC, Merks JH, Casanova M, Bisogno G, Orbach D, Gentet JC, Thomassin Defachelles AS, Chastagner PB, Lewis S, Ronghe M, McHugh K, van Rijn R, Hilton M, Bachir J, Fürst-Recktenwald S, Georger B, Oberlin O; BERNIE: Open-label, randomized, phase II study of bevacizumab plus chemotherapy in pediatric metastatic rhabdomyosarcoma (RMS) and non-rhabdomyosarcoma soft tissue sarcoma (NRSTS). *J Clin Oncol.* 2016; 34 (suppl; abstr 11054).
48. Mascarenhas L, Meyers WH, Lyden E, Rodeberg DA. Randomized phase II trial of bevacizumab and temsirolimus in combination with vinorelbine (V) and cyclophosphamide (C) for first relapse/disease progression of rhabdomyosarcoma (RMS): a report from the Children's Oncology Group (COG). *J Clin Oncol.* 2014; 32: 5s (suppl; abstract 10003).
49. Gordon MS, Robert F, Matei D, Mendelson DS, Goldman JW, Chiorean EG, Strother RM, Seon BK, Figg WD, Peer CJ, Alvarez D, Adams BJ, Theuer CP, Rosen LS. An open-label phase Ib dose-escalation study of TRC105 (anti-endoglin antibody) with bevacizumab in patients with advanced cancer. *Clin Cancer Res.* 2014 Dec 1;20(23):5918–26.
50. Attia S, Kumar S, Riedel RF, Robinson SI, Conry RM, McKay Boland P, Barve MA, Fritchie K, Seon BK, Alvarez D, Adams BJ, Shazer RL, Theuer CP, Maki RG. A phase 1B/ phase 2A study of TRC105 (Endoglin Antibody) in combination with pazopanib (P) in patients (pts) with advanced soft tissue sarcoma (STS). *J Clin Oncol.* 2016;34 (suppl; abstr 11016).
51. Afshar Moghaddam N, Mahsuni P, Taheri D. Evaluation of Endoglin as an angiogenesis marker in Glioblastoma. *Iran J Pathol.* 2015 Spring;10(2):89–96.
52. Barresi V, Cerasoli S, Vitarelli E, Tuccari G. Density of microvessels positive for CD105 (endoglin) is related to prognosis in meningiomas. *Acta Neuropathol.* 2007;114(2):147–56. Epub 2007 Jun 27
53. Wexler LH, Meyer WH, Helman LJ. Rhabdomyosarcoma. In: Pizzo PA, Poplack DG, editors. *Principles and Practice of Pediatric Oncology*, vol. 6. Philadelphia: Wolter Kluwer–Lippincott Williams & Wilkins. 2011. pp. 923–53.
54. Kumar S, Ghellal A, Li C, Byrne G, Haboubi N, Wang JM, Bundred N. Breast carcinoma: vascular density determined using CD105 antibody correlates with tumor prognosis. *Cancer Res.* 1999;59:856–61.
55. Yao Y, Pan Y, Chen J, Sun X, Qiu Y, Ding Y. Endoglin (CD105) expression in angiogenesis of primary hepatocellular carcinomas: analysis using tissue microarrays and comparisons with CD34 and VEGF. *Ann Clin Lab Sci.* 2007;37:39–48.
56. Kuda M, Kohashi K, Yamada Y, Maekawa A, Kinoshita Y, Nakatsura T, Iwamoto Y, Taguchi T, Oda Y. FOXM1 expression in rhabdomyosarcoma: a novel prognostic factor and therapeutic target. *Tumour Biol.* 2016; 37(4):5213–23.
57. Folberg R, Hendrix MJ, Maniotis AJ. Vasculogenic mimicry and tumor angiogenesis. *Am J Pathol.* 2000;156(2):361–81.
58. Cao Z, Bao M, Miele L, Sarkar FH, Wang Z, Zhou Q. Tumour vasculogenic mimicry is associated with poor prognosis of human cancer patients: a systemic review and meta-analysis. *Eur J Cancer.* 2013;49(18):3914–23.
59. Chen X, Maniotis AJ, Majumdar D, Pe'er J, Folberg R. Uveal melanoma cell staining for CD34 and assessment of tumor vascularity. *Invest Ophthalmol Vis Sci.* 2002;43(8):2533–9.
60. Chen L, He Y, Sun S, Sun B, Tang X. Vasculogenic mimicry is a major feature and novel predictor of poor prognosis in patients with orbital rhabdomyosarcoma. *Oncol Lett.* 2015;10(3):1635–41. Epub 2015 Jul 8
61. Sun B, Zhang S, Zhao X, Zhang W, Hao X. Vasculogenic mimicry is associated with poor survival in patients with mesothelial sarcomas and alveolar rhabdomyosarcomas. *Int J Oncol.* 2004;25(6):1609–14.
62. Yudoh K, Kanamori M, Ohmori K, Yasuda T, Aoki M, Kimura T. Concentration of vascular endothelial growth factor in the tumour tissue as a prognostic factor of soft tissue sarcomas. *Br J Cancer.* 2001;84(12):1610–5.
63. Chao C, Al-Saleem T, Brooks JJ, Rogatko A, Kraybill WG, Eisenberg B. Vascular endothelial growth factor and soft tissue sarcomas: tumor expression correlates with grade. *Ann Surg Oncol.* 2001;8(3):260–7.
64. West CC, Brown NJ, Mangham DC, Grimer RJ, Reed MW. Microvessel density does not predict outcome in high grade soft tissue sarcoma. *Eur J Surg Oncol.* 2005;31(10):1198–205.

Submit your next manuscript to BioMed Central and we will help you at every step:

- We accept pre-submission inquiries
- Our selector tool helps you to find the most relevant journal
- We provide round the clock customer support
- Convenient online submission
- Thorough peer review
- Inclusion in PubMed and all major indexing services
- Maximum visibility for your research

Submit your manuscript at
www.biomedcentral.com/submit

