

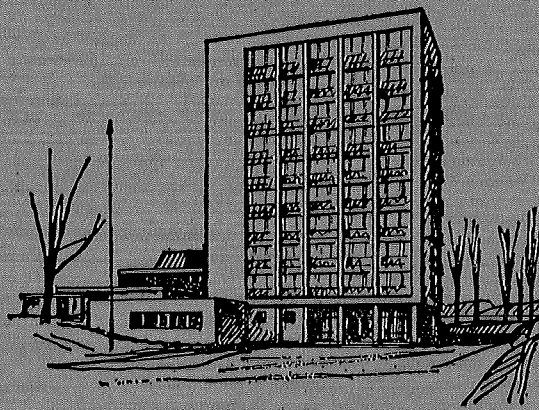
# Norsk Oseanografisk Datasenter (NOD)

Oceanographic Cruise Programmes  
(Planned)

NORWAY  
1976

Nr. 10

March 1976



FISKERIDIREKTORATETS HAVFORSKNINGSINSTITUTT  
BERGEN

Oceanographic Cruise Programmes  
(Planned)

NORWAY  
1976

Nr. 10

March 1976

FISKERIDIREKTORATETS HAVFORSKNINGSINSTITUTT  
BERGEN

<u>Contents:</u>	Page:
Introduction	1
Abbreviations	2
Scientific Classifications	3

Vessels:

Asterias	9
Chartered vessels	11-12
Dr. Fritjof Nansen	8
Feiebas	10
Fritjof Nansen	10
G.M. Dannevig	7
G.O. Sars	4
Havdrøn	8-9
Helland Hansen	9-10
Johan Hjort	5
M. Ytterstad	6-7
Peder Rønnestad	6

## INTRODUCTION

This report of the Norwegian Research Vessels Cruise Programme will be produced annually. for the information of the International Council for the Exploration of the Sea and the Intergovernmental Oceanographic Commission, at their request. It may also be of interest and use to scientists wishing to know the nature of the research being carried out and the areas in which the ships will be operating.

Attempts to include all research vessels have been made. The Cruise Programmes are comprehensive for the Institute of Marine Research, less so for other Institutions.

This report is compiled by

Norsk Oseanografisk Datasenter

P.O. Box 2906

5011 - Bergen - Nordnes, Norway

with the assistance of Governmental Institutions and Universities owning research vessels.

Abbreviations

FD	Directorate of Fisheries, Bergen
FHI	Institute of Marine Research, Bergen
FTFI	Institute of Fishery Technology Research, Bergen Division of Gear & Methods
OD	Norwegian Petroleum Directorate, Stavanger
UIB	University of Bergen
UIT	University of Tromsø
B st. E	Biological Station, Espegrend
B st. F	Biological Station, Flødevigen

List of abbreviations used.

Classification of scientific programmes.

- Do Descriptive oceanography (measurement of temperature, salinity and other dissolved substances required for computation of geostrophic currents and description of water properties).
- Cm Current measurements (by direct method, such as GEK, current meters, drogues, Swallow floats, etc.).
- Fr Fisheries research (exploratory fishing, bionomics, sampling, selectivity, gear experiments, tagging, etc.).
- Ps Planktonic studies (phyto - and zooplankton research including fish eggs and larvae, standing crop and primary production, associated measurements or observations mainly in the biological euphotic zone).
- Ab Biological aphotic zone studies (biological studies in waters deeper than several hundred meters).
- SL Sea level measurements.
- DNP Declared national programme.
- MS Marsden square.

SHIP	AREA (MS)	DATE	PROGRAMME	OPERATING AGENCY	COMMENTS	
"G.O.SARS"	BARENTS SEA (252,251,250,286,285)	10/1-6/3	Fr,Ps,Do	FHI	Capelin,Cod	DNP
"	NORTH SEA, N.E.ATLANTIC (252,217,181,182)	14/3-13/4	Fr,Ps,Do,SL	"	Norway pout. JONSDAP-76.	"
"	NORW.COAST (252,251,250)	25/5-5/6	Ps,Do,SL	"	Pollution	"
"	BARENTS SEA (252,251,250,286,285)	9/6-10/7	Fr.Do	"	Capelin	"
"	N.E. ATLANTIC 252,217, 218,254,253, 288)	15/7-15/8	Fr,Do	"	Blue Whiting	"
"	BARENTS SEA (252,251,250,286,285, 287)	{ a.24/8-10/9 b.11/9-3/10 c.4/10-16/10	Fr,Do Fr,Do Fr,Do	" " "	0-group (Cod) Capelin Cod	" " "
"	NORTH SEA (252,217,216)	25/10-20/11	Fr,Do,SL	"	Herring, Mackerel JONSDAP-76.	"
"	NORTH SEA (252,216)	1/12-18/12	Cm,Do,SL	"	Pollution, Coastal Current	"

SHIP	AREA (MS)	DATE	PROGRAMME	OPERATING AGENCY	COMMENTS		
"JOHAN HJORT"	BARENTS SEA (252,251,250,286,285)	5/1-7/2	Fr,Ps,Do	FHI	Cod		DNP
"	NORTH SEA (252,216,181)	9/2-5/3	Fr,Ps,Do,SL	"	International Research on Herring & Demersal fish. JONSDAP-76.		DNP
"	BARENTS SEA (252,251,250,286,285)	9/3-14/4	Fr,Ps,Do	"	Capelin(Spawning grounds), Herring(Larvae)		DNP
"	NORW. COAST (252,251,250,249)	20/4-17/5	Fr,Ps,Do	"	Fish larvae, primary prod.		DNP
"	NORTH SEA/SKAGERRAK (252,216)	24/5-10/7	Fr,Ps,Do,SL	"	Mackerel. 0-group: Cod, haddock whiting & Norway pout. JONSDAP-76.		DNP
"	BARENTS SEA (252,251,250,286,285)	16/8-10/9	Fr,Ps,Do	"	0-group, plancton.		DNP
"	BARENTS SEA (252,251,250,286,285)	11/9-16/10	Fr,Ps,Do	"	Capelin, plancton		DNP
"	NORW. COAST & FJORDS (252)	1/11-18/12	Fr,Do,SL	"	Herring, sprat. Pollution		DNP



SHIP	AREA (MS)	DATE	PROGRAMME	OPERATING AGENCY	COMMENTS	
"PEDER RØNNESTAD"	NORW. COAST (252, 251, 250)	10/2-15/3	Fr, Do	FHI	Arctic Cod	DNP
"	NORW. COAST (252, 216)	22/3-1/4	Ps	"	Euphausiids	"
"	NORW. FJORDS (252)	5/4-11/4	Ps	"	Fish eggs & Larvae	"
"	NORW. COAST (252)	2/5-15/5	Ps	"	Calanus finmarcicus	"
"	NORW. COAST (252)	20/5-6/6	Cm, Do	"	Coastal Current	"
"	NORW. COAST (252, 251, 250)	9/6-21/6	Ps	"	Calanus finmarcicus	"
"	NORTH SEA (252, 216, 181)	28/7-6/9	Fr, Do	"	Mackerel (tagging) JONSDAP-76.	"
"	NORW. COAST (252, 251, 250)	13/9-4/10	Fr	"	Saithe (0-group)	"
"M. YTTERSTAD"	BARENTS SEA (251, 250, 249, 285, 286)	2/1-13/3	Fr	FD	Capelin	"

SHIP	AREA (MS)	DATE	PROGRAMME	OPERATING AGENCY	COMMENTS	
"M. YTTERSTAD"	NORW. COAST (252, 251, 250)	15/3-24/4	Fr	FHI	Herring	DNP
"	NORW. COAST (250, 249)	26/4-12/6	Ps	"	Capelin, eggs & larvae	"
"G.M. DANNEVIG"	SKAGERRAK (216)	Monthly	Do	B st.F (FHI)	Hydrography	"
"	OSLOFJORD (216)	Monthly	Ps, Do	"	Project Thermic Power Plant	"
"	COASTAL AREA (216)	Monthly	Ps, Do, SL	"	Pollution	"
"	COASTAL AREA (216)	Monthly	Ps, Do	"	Organic matter	"
"	NORTH SEA (216)	May	Fr, Do	"	Turbot	"
"	SKAGERRAK (216)	May/June	Do	"	Coastal Current	"
"	COASTAL AREA (216)	September/ October	Ps, Do	"	0-group	"

SHIP	AREA (MS)	DATE	PROGRAMME	OPERATING AGENCY	COMMENTS	
"Dr. FRITJOF NANSEN"	ARABIAN SEA (101,102,66,67,31,32)	10/1-5/4	Fr,Do	FHI		DNP
"	ARABIAN SEA (101,102,66,67,31,32)	6/4-1/7	Fr,Do	"		"
"	ARABIAN SEA (101,102,66,67,31,32)	20/8-1/12	Fr,Do	"		"
"HAVDRØN"	BARENTS SEA (251,250,249,285,286)	2/2-21/2	Fr	FD	Capelin	"
"	NORTH SEA (216,181)	23/2-13/3	Fr	FHI	Sprat (tagging)	"
"	NORTH SEA (216,181,252)	15/3-2/5	Fr	FD/FTFI	Blue whiting, gear experiment	"
"	ATLANTIC (182)	3/5-19/5	Fr	FHI	Mackerel (tagging)	"
"	NORTH SEA (216,217,252)	20/5-29/5	Fr	FD	Blue Whiting	"
"	NORTH SEA (216,217,252)	31/5-19/6	Fr	FHI	Industrial species (Norway Pout, Sandeel, Blue whiting)	"

SHIP	AREA (MS)	DATE	PROGRAMME	OPERATING AGENCY	COMMENTS	
"HAVDRØN"	NORW. SEA (252, 217, 218, 254, 253, 288)	5/7-31/7	Fr	FHI	Herring, Mackerel, Blue Whiting.	DNP
"	Unspecified	2/8-11/9	Gg	OD		"
"	NORTH SEA (216, 181)	11/10-30/10	Fr	FHI	Sprat (tagging)	"
"ASTERIAS"	NORW. COAST (249, 250)	February	Ps, Do	UIT	Biology, Hydrography	"
"	NORW. COAST (250)	March	Ps	UIT	Biology	"
"	LOFOTEN (250)	15/3-15/4	Fr, Ps	FHI	Cod (spawning periode), Calanus finmarcicus	"
"	SKJOMEN (252)	Quarterly	Fr, Ps, Do	UIT	Biology, Hydrography	"
"HELLAND HANSEN"	NORW. COAST (252)	1 week monthly	Ps, Do, Cm	UIB	Project: Coastal Current/- JONSDAP-76.	"
"	NORW. COAST (252, 251)	1 week monthly (march-oct.)	Ps, Do	FHI	Plancton, primary production Pollution.	"

SKIP	AREA (MS)	DATE	PROGRAMME	OPERATING AGENCY	COMMENTS	
"HELLAND HANSEN"	NORW.COAST (250,285)	1 week monthly (march/oct.)	Ps,Do	FHI	Plankton, primary Production Pollution	DNP
"	FÆROE-SHETLAND (252,217)	10/6-20/6	Do	UIB	Project: Overflow	"
"	Unspecified	26/8-8/9	Gg	"	Geology - Geophysics	"
"FRITJOF NANSEN"	NORW.FJORDS (252,216)	1 week monthly	Do,Cm	UIB B st. E	Hydrography	"
"FEIEBAS"	NORTH SEA (252,216,188)	2/2-6/3	Fr	FHI	Industrial species	"
"		8/3-3/4	Fr	FTFI	Gear experiments	"
"		6/4-15/5	Fr	FD	Prawns	"
"	NORTH SEA (252,216,188)	12/7-31/7	Fr	FHI	Industrial species	"
"		2/8-25/9	Fr	FTFI	Gear experiments	"

SHIP	AREA (MS)	DATE	PROGRAMME	OPERATING AGENCY	COMMENTS	
Chartered Vessel	BARENTS SEA (250,249,285)	20/1-22/3	Fr	FHI	Capelin	DNP
"	" " "	21/4-14/6	Fr,Ps	"	"	"
"	NORW.SEA (252,251,250)	1/2-15/3	Fr	"	Herring, Atlanto-Scandian	"
"	" " "	25/2-25/3	Fr	"	" " " "	"
"	" " "	19/5-15/6	Fr	"	" " " "	"
"	LOFOTEN (250)	March-April	Fr	"	Arctic Cod	"
"	NORW.SEA (250,286,285)	May-June	Fr	"	Greenland Halibut	"
"	LOFOTEN (250,249)	4/8-30/8	Fr	"	Cod, Haddock, Saithe	"
"	NORW.COAST (250)	Sept.-Oct.	Fr	"	Crab	"
"	N.E. ATLANTIC (287,288,253,254)	15/3-10/5	Fr	FD	Mammals	"

SHIP	AREA (MS)	DATA	PROGRAMME	OPERATING AGENCY	COMMENTS	
Chartered Vessel	DENMARK STRAIT (185,186,222)	15/6-15/7	Fr	FHI	Mammals	DNP
"	288,283,284	10/7-20/8	Fr	"	Minke whale	"