

RESEARCH

Open Access

Prognostic values of mid-radiotherapy ^{18}F -FDG PET/CT in patients with esophageal cancer

Nalee Kim¹, Hojin Cho², Mijin Yun², Kyung Ran Park³ and Chang Geol Lee^{1*}

Abstract

Background: To identify whether early metabolic responses as determined using ^{18}F -fluorodeoxyglucose positron emission tomography/computed tomography (FDG PET/CT) during radiotherapy (RT) predict outcomes in patients with esophageal cancer.

Methods: Twenty-one patients with esophageal cancer who received pre-treatment ^{18}F -FDG PET/CT (PET1) and inter-fractional ^{18}F -FDG PET/CT (PET2) after 11 fractions of RT (median 23.1 Gy, 2.1 Gy per fraction) were retrospectively reviewed. The region of interest for each calculation was delineated using "PET Edge". We calculated PET parameters including maximum and mean standardized uptake values (SUV_{max} and SUV_{mean} , respectively), metabolic tumor volume (MTV), and total lesion glycolysis (TLG). The relative changes (%) were calculated using the logarithmically transformed parameter values for the PET1 and PET2 scans. Multivariate analysis of locoregional recurrence and distant failures were performed using Cox regression analysis. After identifying statistically significant PET parameters for discriminating responders from non-responders, receiver operating characteristics curve analyses were used to assess the potentials of the studied PET parameters.

Results: After a median follow-up of 13 months, the 1-year overall and progression-free survival rates were 79.0% and 34.4%, respectively. Four patients developed locoregional recurrences (LRRs) and 8 had distant metastases (DMs). The 1-year overall LRR-free rate was 76.9% while the DM-free rate was 60.6%. The relative changes in MTV (ΔMTV) were significantly associated with LRR ($p = 0.03$). Conversely, the relative changes in SUV_{mean} ($\Delta\text{SUV}_{\text{mean}}$) were associated with the risk of DM ($p = 0.02$). An ΔMTV threshold of 1.14 yielded a sensitivity of 60%, specificity of 94%, and an accuracy of 86% for predicting an LRR. Additionally, a $\Delta\text{SUV}_{\text{mean}}$ threshold of a 35% decrease yielded a sensitivity of 67%, specificity of 83%, and accuracy of 76% for the prediction DM.

Trial registration: Retrospectively registered.

Conclusions: Changes in tumor metabolism during RT could be used to predict treatment responses, recurrences, and prognoses in patients with esophageal cancer.

Keywords: Radiotherapy, Esophageal cancer, Metabolic response, Prognosis, ^{18}F -FDG, PET/CT

* Correspondence: CGL1023@yuhs.ac

¹Department of Radiation Oncology, Yonsei Cancer Center, Yonsei University College of Medicine, Seoul, Republic of Korea

Full list of author information is available at the end of the article



Background

Cancer staging is currently the most important measure for predicting survival as well as for treatment planning. The use of ^{18}F -fluoro-2-deoxyglucose positron emission tomography/computed tomography (^{18}F -FDG PET/CT) as an imaging modality has been steadily increasing in patients with most types of solid tumors, including esophageal cancer [1]. The use of FDG uptake, which is indicative of tumor metabolism, has also been explored for its prognostic utility. ^{18}F -FDG PET/CT-based metabolic parameters such as the standardized uptake value (SUV) and total lesion glycolysis (TLG) have been established and validated as surrogate parameters for predicting survival in patients with esophageal cancer [2, 3].

Additionally, ^{18}F -FDG-PET/CT can be used to evaluate treatment response by determining changes in tumor glucose uptake following chemotherapy or radiotherapy (RT). Several studies of patients with esophageal cancer have indicated that tumor metabolic activity after preoperative treatment is strongly associated with histopathologic responses and overall outcomes [4–7]. However, such assessments usually provide information regarding late treatment responses, the main drawback of which is that physicians are unable to provide patients with nonresponding tumors alternative treatment strategies during the early stages of therapy. As such, other studies have demonstrated satisfactory measurements of metabolic parameters after only 2 weeks of induction therapy with acceptable sensitivities and specificities, allowing for the accurate early prediction of response to treatment in patients with esophageal cancer [8, 9]. To that end, ^{18}F -FDG PET/CT has been proposed for predicting early responses and potentially allowing a change of individualized treatment; however, this method has not yet been established in routine clinical practice. Determining early responses using ^{18}F -FDG PET/CT would allow non-invasive stratification of patients according to their responses and help devise more effective treatment regimens. Most studies of early responses using ^{18}F -FDG PET/CT are limited to patients treated with chemotherapy and not RT. Furthermore, due to the radiation exposure during PET scan [10], mid-radiotherapy PET scan has not been widely adopted regardless of its clinical benefit. To implement predictive ^{18}F -FDG PET/CT-guided algorithms for patients undergoing RT, the prognostic values of early metabolic responses as well as specific ^{18}F -FDG PET/CT-based metabolic parameters ought to be determined in the setting of inter-fractional ^{18}F -FDG PET/CT (PET2) after the initiation of RT. Therefore, the aim of this study was to investigate whether inter-fractional metabolic response evaluation using ^{18}F -FDG PET/CT could be used as a predictor of RT response in patients with esophageal cancer.

Materials and methods

Study population

Patients diagnosed with esophageal cancer who had undergone RT with PET2 between November 2015 and June 2017 were enrolled in this study. Patients were excluded if pre-RT ^{18}F -FDG PET/CT (PET1) was either not available or performed at another institution ($n = 4$) or if they did not complete RT ($n = 2$). Ultimately, we retrospectively reviewed the medical records and tumor characteristics of 21 patients, as well as their clinical outcomes. This study was approved by the Health Institutional Review Boards of Yonsei University Hospital (IRB No. 2017-3510-001). The requirement for informed consent was waived owing to the study's retrospective nature.

Treatment

Standard treatment at our center consists of 6 weeks of RT with concurrent chemotherapy. Chemotherapy was administered to all patients using a 5-fluorouracil (5-FU) – based regimen except in 3 patients who were medically ineligible (2 underwent RT alone and 1 received uracil/tegafur). Overall, 18 patients were treated with the 5-FU/cisplatin regimen, 2 cycles of which were administered concurrently during RT. Patients had a 4-week break after the completion of RT, and additional maintenance chemotherapy was performed if a medical oncologist determined that the patient's performance status would allow for it. 5-FU was administered at 500–1250 mg/m² daily as a continuous infusion using a portable electronic pump on days 1–4, while cisplatin was administered at 40–100 mg/m² on day 1 and during RT sessions.

The consistent RT technique used was as follows: The gross tumor volume (GTV) was delineated using simulation CT (3 mm slice thickness) and included the primary tumor and involved regional nodes that were detected via PET and CT fusion using the MIM software (Mim Software Inc., Cleveland, OH, USA). The initial clinical target volume included the GTV plus a margin of at least 4 cm longitudinally and 2 cm radially. The final planning target volume (PTV) was delineated by adding a 0.3 cm margin to both the GTV and clinical target volume based on our institutional image-guidance strategies (PTV1 and PTV2, respectively). A total of 63 Gy in 30 fractions was prescribed to the PTV1 while 54 Gy in 30 fractions was prescribed to the PTV2 using simultaneous integrated boost for patients who underwent definite chemoradiation therapy. For preoperative chemoradiation therapy, a total of 44.1 Gy in 21 fractions and 37.8 Gy in 21 fractions were prescribed to the PTV1 and PTV2, respectively. All patients received intensity-modulated radiation therapy using volumetric modulated arc therapy. Daily pre-treatment imaging using cone beam CT was performed with corresponding position correction before the delivery of each fraction.

¹⁸F-FDG PET/CT method

¹⁸F-FDG PET/CT scans were performed with a PET-CT scanner (Biograph TruePoint 40; Siemens Healthcare, Erlangen, Germany). Prior to undergoing ¹⁸F-FDG PET/CT, each patient fasted for a minimum of 6 h before ¹⁸F-FDG administration, and the plasma glucose level was maintained below 140 mg/dL. ¹⁸F-FDG was administered intravenously at an approximate dosage of 5.5 MBq/kg of body weight. After a tracer uptake time of median 58 min (range, 45–63 min), patients were subjected to PET/CT imaging; a low-dose, non-contrast CT scan was obtained for attenuation correction. The intrinsic spatial resolution of the system was approximately 5 mm (full-width at half-maximum) in the center of the field of view. Images were acquired from the skull base to the proximal thigh. PET images were reconstructed using a 3D row-action maximum-likelihood iterative reconstruction algorithm. To minimize the negative predictive value caused by non-specific FDG accumulation in radiation mediated inflammatory lesion, we performed ¹⁸F-FDG PET/CT assessment 2 weeks after the initiation of treatment [11]. The reliability of the early response evaluation 2 weeks after the initiation of treatment has been identified by multiple series; it represents the time course of RT response [8, 12]. The ¹⁸F-FDG PET/CT examinations were performed within 1 month before the initiation of RT (PET1) and a median 11 (range, 9–12) days after RT (PET2).

PET metrics

Measurements of metabolic uptake in FDG-avid tumors following pretreatment and inter-fractional scans were compared and evaluated to predict the response to RT. For analysis of PET metrics, all primary tumors were defined as the region of interest and delineated on the PET1 and PET2 scans using PET Edge, a semi-automatic gradient-based delineation method included in MIM software, consistently by a single radiation oncologist (NLK). This method algorithm places the contour boundary at the location where the signal gradient is highest; it has been found to correspond better to pathological specimens than threshold-based methods [13] and has recently been validated in a multi-observer study that showed superiority over the manual and threshold methods in non-small cell lung cancers [14].

The following quantitative features were extracted from the regions of interest of the PET1 and PET2: maximum and mean SUVs (SUV_{max} and SUV_{mean}, respectively), metabolic tumor volume (MTV), and TLG. The SUV_{max} was defined as the maximum activity concentration in the tumor/(injected dose/body weight). The SUV_{mean} was defined as the mean concentration of FDG in the tumor/(injected dose/body weight). The MTV was automatically calculated by the software by summing the areas with each 2-dimensional transverse tumor contour and

multiplying the values by the corresponding slice thickness. The TLG was calculated by multiplying the SUV_{mean} by the MTV of the tumor [15].

Table 1 Patient and treatment characteristics

	Number	Percent
Patient characteristics		
Age at treatment (yrs), median (range)	69.2	(46.4–86.8)
Sex		
Female	3	14.3
Male	18	85.7
ECOG PS		
0–1	12	57.1
2	9	42.9
Pathology		
Squamous cell carcinoma	21	100.0
Adenocarcinoma	0	0.0
Site		
Upper thoracic (UI 20–25 cm)	5	23.8
Middle thoracic (UI 25–30 cm)	9	42.9
Lower thoracic (UI 30–40 cm)	7	33.3
Stage		
I	1	4.8
II B	4	19.0
III A	3	14.3
III B	7	33.3
III C	6	28.6
Treatment characteristics		
Aim		
Definitive	17	81.0
Preop	4	19.0
Concurrent chemotherapy		
Chemotherapy regimen (n = 19)		
5-Fluorouracil+cisplatin	18	94.7
5-Fluorouracil monotherapy	1	5.3
RT modality		
IMRT	21	100.0
3D-CRT	0	0.0
Median total dose (Gy), median (range)	63	(44.1–69.3)
Median fraction dose (Gy), median (range)	2.1	(1.8–2.1)
Fractions of RT completed before mid-radiotherapy PET (fractions), median (range)	11	(9–12)
Dose of RT completed before mid-radiotherapy PET (Gy), median (range)	23.1	(18.9–25.2)

Abbreviations: ECOG PS Eastern Cooperative Oncology Group performance status, UI upper incisor, RT radiotherapy, IMRT intensity-modulated radiotherapy, 3D-CRT 3 dimensional-conformal radiotherapy

Statistical analysis

The association between clinical outcomes and PET metrics was evaluated using the chi-square test for categorical parameters and Student's T-test for continuous parametric parameters. Multiple PET parameters were logarithmically transformed to meet the assumption of linearity on the logit scale. The relative changes (%) were calculated using the logarithmically transformed parameter values for the PET1 and PET2 scans. Locoregional recurrence and distant metastasis were defined as recurrence within and outside the PTV, respectively. The time to events was measured from the date of the first RT administration. The survival curves were estimated using the Kaplan-Meier method and compared using the log-rank test. Multivariate analysis of locoregional recurrence and distant failures were performed using Cox regression analysis. After identifying statistically significant PET parameters for discriminating responders from non-responders, receiver operating characteristics curve analyses were used to assess the potentials of the studied PET parameters; the sensitivity, specificity, accuracy, positive predictive value (PPV), and negative predictive value (NPV) were calculated for an optimal threshold that was determined by providing equal weight to the sensitivity and specificity on the receiver operating characteristics curve. A p -value < 0.05 was considered statistically significant. Statistical analyses were performed using SPSS version 23.0.0 (IBM Corp., Armonk, NY) and R version 3.3.0.

Results

Cohort characteristics

The patients' characteristics are shown in Table 1. Most subjects underwent definitive chemoradiation therapy

($n = 17$, 81.0%). The PET2 was obtained approximately 2 weeks (median, 11 days) after the initiation of RT; the median dose at the time of PET2 was 23.1 (range, 18.9–25.2) Gy.

PET metrics

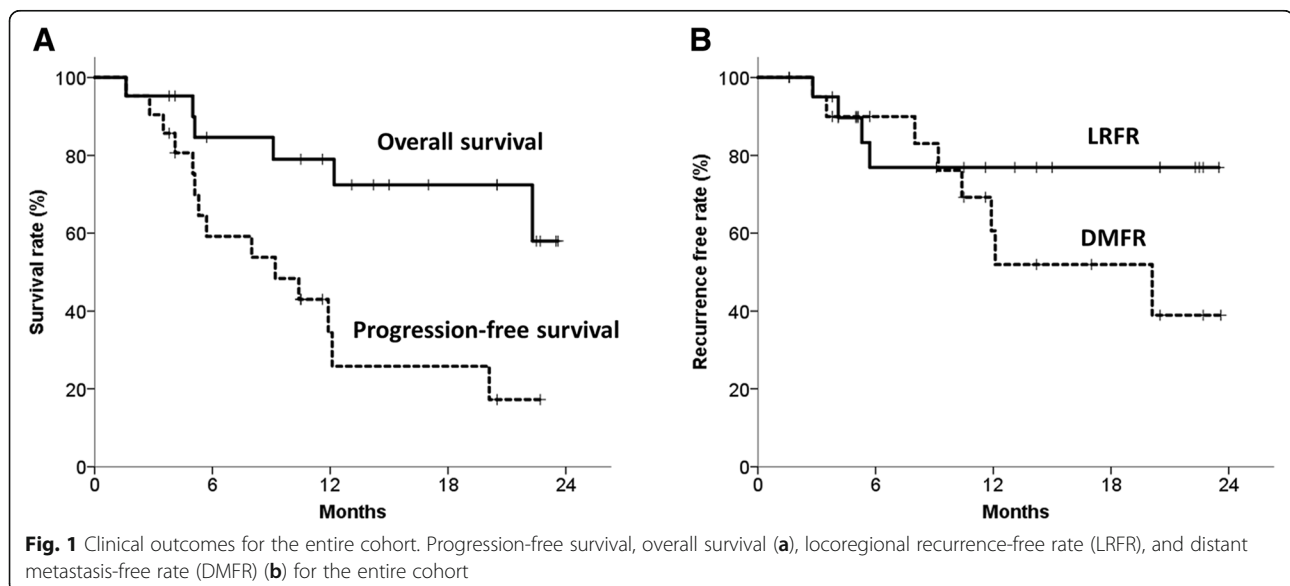
The median PET1 SUV_{max} and SUV_{mean} were 15.1 (Interquartile range [IQR] 9.9–19.5) and 7.7 (IQR 5.8–11.5), respectively. Furthermore, the median PET1 MTV and TLG values were 10.2 (IQR 7.3–19.0) mL and 96.2 (IQR 39.7–346.3), respectively. The PET metrics were generally lower on PET2 than on PET1; the per-patient relative changes after RT according to ^{18}F -FDG PET intensity (SUV_{max} , SUV_{mean}) and metabolic tumor volume (MTV, TLG) are shown in Additional file 1: Table S1.

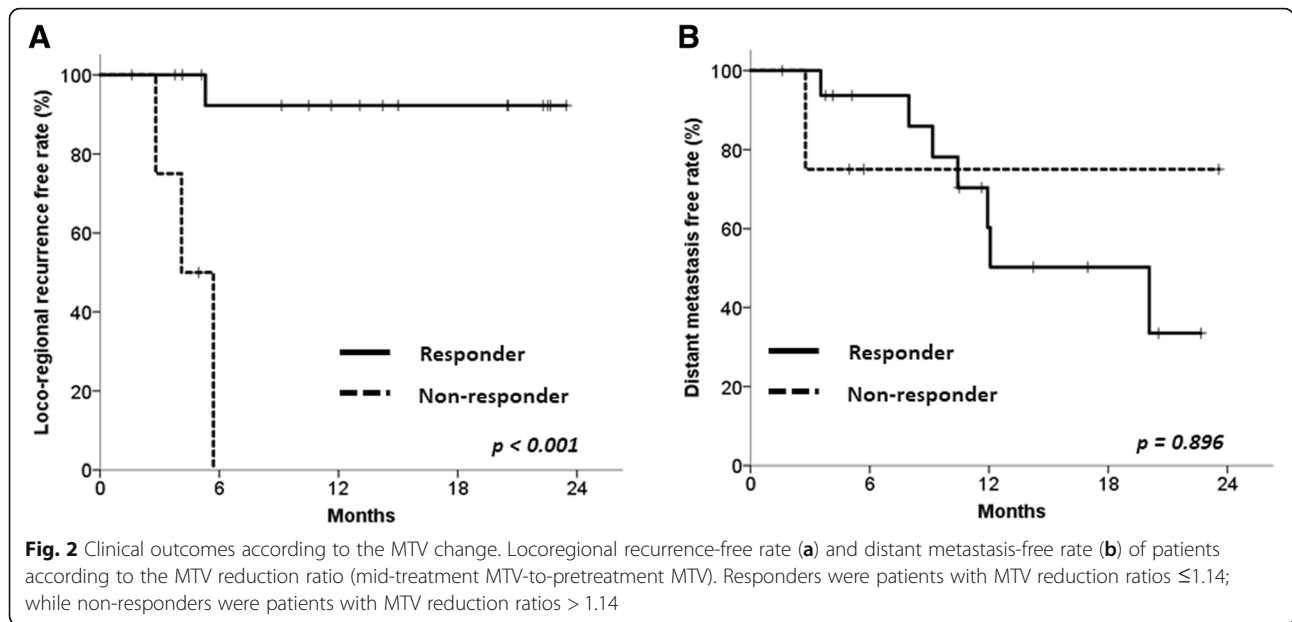
Treatment outcomes

The median follow-up was 13.1 (range, 1.6–23.6) months. The 1-year overall survival (OS) and progression-free survival (PFS) rates were 79.0% and 34.4%, respectively (Fig. 1a). Four patients developed locoregional recurrences and 8 showed distant metastases. The overall 1-year locoregional recurrence-free rate (LRFR) was 76.9%, while the distant metastasis-free rate (DMFR) was 60.6% (Fig. 1b).

Prognostic PET parameters

The relative changes to the MTV (i.e., ΔMTV) were significantly associated with locoregional recurrence (hazard ratio [HR] 0.98, 95% confidence interval [CI] 0.96–1.00; $p = 0.03$, Table 2). Conversely, the relative changes in the SUV_{mean} (i.e., ΔSUV_{mean}) were associated with the risk of distant recurrence (HR 0.90, 95% CI 0.82–0.99;





non-responders ($n = 9$, 42.9%); the 1-year DMFRs were 83.3% vs. 31.1%, respectively ($p = 0.011$, Fig. 3b). However, loco-regional control was not significantly different between the 2 groups; the 1-year LFRs were 90.9% and 63.5%, respectively ($p = 0.226$, Fig. 3a).

Based on the Δ MTV criteria, good responders ($n = 16$, 76.2%) showed longer PFS than non-responders ($n = 5$, 23.8%), with 1-year PFS rates of 34.6 and 0%, respectively ($p < 0.001$, Additional file 2: Figure S1). The Δ MTV-based response criteria also exhibited borderline significance for OS, as the 1-year OS rates were 85.7 and 60.0%, respectively ($p = 0.051$, Additional file 2: Figure S1).

On the other hand, there were no significant differences in OS and PFS between good responders and non-responders based on the Δ SUV_{mean} criteria (Additional file 3: Figure S2).

Diagnostic tests

The diagnostic test results are summarized in Table 3. Using the calculated threshold of 1.14, the Δ MTV yielded a sensitivity of 60%, specificity of 94%, accuracy of 86%, PPV of 75%, and NPV of 88% for predicting loco-regional recurrence. Furthermore, the Δ SUV_{mean} yielded a sensitivity of 67%, specificity of 83%, accuracy

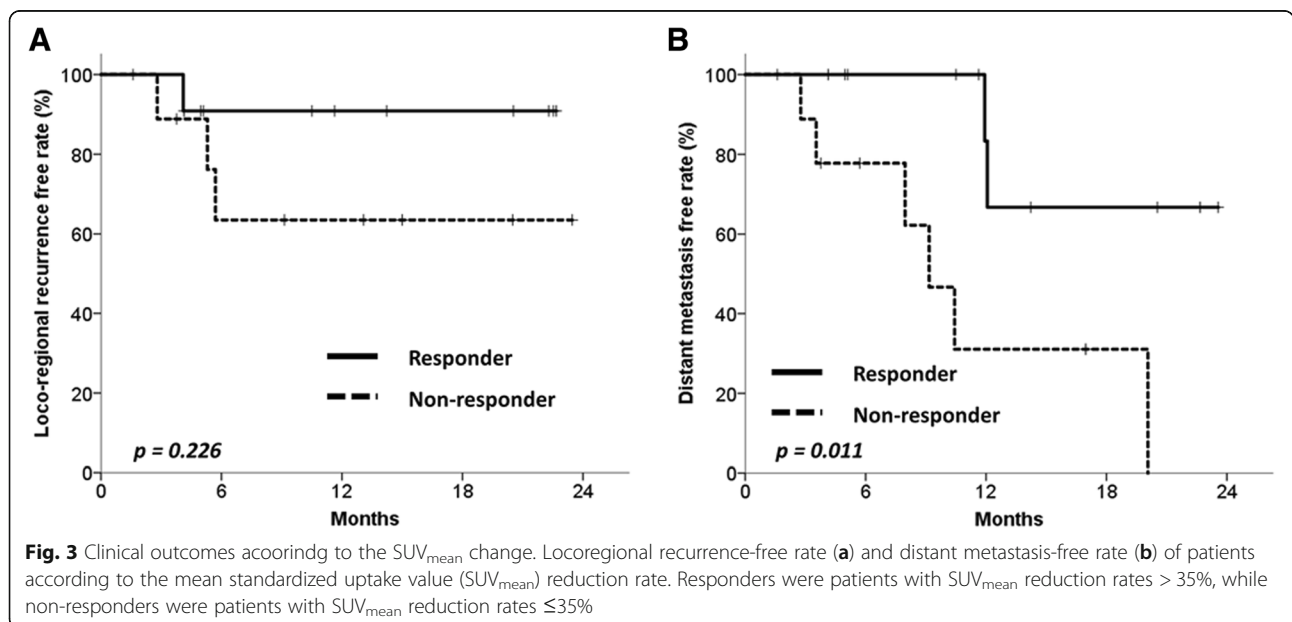


Table 3 Diagnostic tests for metabolic response criteria based on MTV and SUV_{mean}

	Value (%)	95% CI (%)
MTV - Locoregional recurrence		
Pretest probability	23.8	5.5 – 42.0
Sensitivity	60.0	17.1 – 102.9
Specificity	93.8	81.9 – 105.6
Diagnostic Accuracy	85.7	70.8 – 100.7
Positive Predictive Value	75.0	32.6 – 117.4
Negative Predictive Value	88.2	72.9 – 103.6
SUV_{mean} - Distant metastasis		
Pretest probability	42.9	21.7 – 64.0
Sensitivity	66.7	35.9 – 97.5
Specificity	83.3	62.3 – 104.4
Diagnostic Accuracy	76.2	58.0 – 94.4
Positive Predictive Value	75.0	45.0 – 105.0
Negative Predictive Value	76.9	54.0 – 99.8

Abbreviations: CI confidence interval, MTV metabolic tumor volume, SUV_{mean} mean standardized uptake value

of 76%, PPV of 75%, and NPV of 77% for predicting distant metastasis when the calculated threshold of -35% was used.

Discussion

We examined the value of using ^{18}F -FDG PET metrics before and during chemoradiation in predicting responses to treatment in patients with esophageal cancer. We calculated an optimal cut-off value for ΔMTV (a ratio of 1.14), which was predictive of locoregional recurrence, as well as a cut-off value for the ΔSUV_{mean} (a 35% reduction), which was predictive of distant metastasis. These factors showed satisfactory abilities to predict inadequate responses to RT, indicating that the ΔMTV and ΔSUV_{mean} could be useful for identifying responders.

An accurate prediction of pathologic responses is critical, since patients with poor responses are exposed to unnecessary treatment-related toxicities [16, 17]. Therefore, the predictive value of ^{18}F -FDG PET/CT response during treatment has been widely accepted in preoperative chemotherapy for patients with esophageal cancer [9, 12, 18]. Previous studies of ^{18}F -FDG PET/CT before and after induction chemotherapy found a significant association between early metabolic response and histopathologic tumor regression [19].

The early response appears to be an indicator of tumor biology and a predictor of the likelihood of treatment failure. As such, early response evaluation can help identify patients who are eligible for treatment intensification or modification, and thus reduce treatment failures in poor responders (the so-called ^{18}F -FDG PET/CT guided treatment

algorithm). The MUNICON trial prospectively confirmed the feasibility and usefulness of the ^{18}F -FDG PET/CT guided treatment algorithm in patients with esophageal cancer. Poor metabolic responders halted chemotherapy and switched to immediate surgery; such early termination of chemotherapy based on metabolic responses did not negatively affect clinical outcome [9, 12].

Tumor stage, nodal stage, and patient characteristics (including morphological information evaluated using esophagoscopy and CT) were not statistically significant prognostic factors on multivariate analysis in our study. On the other hand, the changes in SUV or MTV in the primary tumor, as measured by ^{18}F -FDG PET/CT, are dependent on glucose metabolism and reflect the changes in tissue viability in response to chemoradiation. Notably, other series that examined the prognostic value of PET metrics in patients receiving chemotherapy and/or RT for esophageal cancer identified different prognostic metrics, ranging from SUV_{max} [20, 21] to a percentage decrease in TLG [22], the percentage decrease in MTV and TLG [23, 24], and the PET2-based MTV and TLG values themselves [25]. However, there remain statistical concerns such as multiple comparisons and selective reporting of endpoints, because most of these studies were retrospective and examined multiple outcomes. In our series, a small decrease in PET2 MTV was associated with local recurrence, suggesting that this parameter may help select patients that would benefit from further local RT dose escalation. Another promising direction is to consider early switching of systemic chemotherapy in patients with a small decrease in SUV_{mean} . Further investigations are required to determine whether additional salvage strategies, such as early switching of concurrent systemic therapy, would be beneficial.

Decrease in MTV represents volumetric changes in the size of high metabolic tumor cells. Thus, it is reasonable to suspect that ΔMTV after local radiotherapy might be a more effective predictor than SUV values in regards to locoregional recurrence [26, 27]. The SUV_{mean} is the SUV value based on MTV. The SUV_{mean} represents the enhanced tapping of ^{18}F -FDG into the tumor cells due to biological mechanisms, tumor aggressiveness, and hypoxia [28, 29]. Therefore it provides information of inherent tumor characteristics which suggests a tendency to distant metastasis. In addition, it is well known that the accuracy of CT for assessment of extent in esophageal cancer is limited in the determination of T status [30, 31]. It is the reason why delineated gross tumor volume does not have its prognostication ability.

Our study had several limitations. First, the results should be interpreted with caution because this was a retrospective analysis. Second, ours was a single-center

study, which would therefore carry inherent biases. However, our analysis was strengthened by including all possible PET metrics in our diagnostic tests using modern ^{18}F -FDG PET/CT techniques and imaging analyses. Other limiting factors include possible inflammatory changes caused by irradiation, which may mimic changes in tumor glucose metabolism associated with treatment effect [32]. Additionally, because of the partial-volume effect, tumor shrinkage upon initiation of treatment may lead to underestimation of the FDG uptake observed on mid-treatment ^{18}F -FDG PET/CT scans, and a consequent overestimation of the change of parameters such as the SUV [2]. There is also a possibility of errors introduced by calibration of PET/CT which could the interpretation of SUV make inaccurate [33]. While measuring changes in FDG uptake is a widely adopted parameter that reflects the proportion of viable tumor cells, the development of additional new tracers specific to apoptosis and proliferation may help provide an even more accurate prediction of RT response.

Conclusion

We found the correlation between decrease in MTV with locoregional recurrence and decrease in SUV_{mean} with distant metastasis, respectively, in esophageal cancer patients treated with chemoradiation therapy. The optimal management of patients with poor responses identified on inter-fractional ^{18}F -FDG PET/CT remains to be determined. Furthermore, a prospective study to confirm the efficacy of ^{18}F -FDG PET/CT-guided algorithms in patients with esophageal cancer is warranted.

Additional files

Additional file 1: Table S1. Quantitative parameters on the pre-treatment PET1 scan and inter-fractional PET2 scan. (DOCX 17 kb)

Additional file 2: Figure S1. Survival outcomes according to the MTV change. Progression-free survival (A) and overall survival (B) of patients according to the metabolic tumor volume (MTV) reduction ratio (mid-treatment MTV-to-pretreatment MTV). Responders were patients with MTV reduction ratios ≤ 1.14 , while non-responders were patients with MTV reduction ratios > 1.14 . (TIF 204 kb)

Additional file 3: Figure S2. Survival outcomes according to the SUV_{mean} change. Progression-free survival (A) and overall survival (B) of patients according to the mean standardized uptake value (SUV_{mean}) reduction rate. Responders were patients with SUV_{mean} reduction rates $> 35\%$, while non-responders were patients with SUV_{mean} reduction rates $\leq 35\%$. (TIF 204 kb)

Abbreviations

^{18}F -FDG PET/CT: ^{18}F -fluoro-2-deoxyglucose positron emission tomography/computed tomography; DMFR: Distant metastasis-free rate; GTV: Gross tumor volume; IQR: Interquartile range; LRRF: Locoregional recurrence-free rate; MTV: Metabolic tumor volume; NPV: Negative predictive value; OS: Overall survival; PFS: Progression-free survival; PPV: Positive predictive value; PTV: Planning target volume; RT: Radiotherapy; SUV: Standardized uptake value; TLG: Total lesion glycolysis

Acknowledgements

Not applicable

Funding

This research did not receive any specific grant from funding agencies in the public, commercial, or not-for-profit sectors.

Availability of data and materials

The datasets used and/or analysed during the current study are available from the corresponding author on reasonable request.

Authors' contributions

NK and CGL contributed to the data collection, analysis of data and drafted the manuscript. HC and MY contributed to the analysis of data. All authors read and approved the final manuscript.

Ethics approval and consent to participate

This research was approved by the institutional IRB (IRB of Yonsei University Hospital, IRB No. 2017-3510-001). Informed written consent was waived owing to the study's retrospective nature.

Consent for publication

Not applicable

Competing interests

The authors declare that they have no competing interests.

Publisher's Note

Springer Nature remains neutral with regard to jurisdictional claims in published maps and institutional affiliations.

Author details

¹Department of Radiation Oncology, Yonsei Cancer Center, Yonsei University College of Medicine, Seoul, Republic of Korea. ²Department of Nuclear Medicine, Yonsei University College of Medicine, Seoul, Republic of Korea. ³Department of Radiation Oncology, Kosin University Gospel Hospital, Busan, Republic of Korea.

Received: 28 September 2018 Accepted: 24 January 2019

Published online: 04 February 2019

References

1. Flamen P, Lerut A, Van Cutsem E, et al. Utility of positron emission tomography for the staging of patients with potentially operable esophageal carcinoma. *J Clin Oncol*. 2000;18(18):3202–10.
2. Krause BJ, Herrmann K, Wieder H, et al. ^{18}F -FDG PET and ^{18}F -FDG PET/CT for assessing response to therapy in esophageal cancer. *J Nucl Med*. 2009;50(Suppl 1):89s–96s.
3. Pan L, Gu P, Huang G, et al. Prognostic significance of SUV on PET/CT in patients with esophageal cancer: a systematic review and meta-analysis. *Eur J Gastroenterol Hepatol*. 2009;21(9):1008–15.
4. Rebollo Aguirre AC, Ramos-Font C, Villegas Portero R, et al. ^{18}F -fluorodeoxyglucose positron emission tomography for the evaluation of neoadjuvant therapy response in esophageal cancer: systematic review of the literature. *Ann Surg*. 2009;250(2):247–54.
5. Westerterp M, van Westreenen HL, Reitsma JB, et al. Esophageal cancer: CT, endoscopic US, and FDG PET for assessment of response to neoadjuvant therapy—systematic review. *Radiology*. 2005;236(3):841–51.
6. Swisher SG, Maish M, Erasmus JJ, et al. Utility of PET, CT, and EUS to identify pathologic responders in esophageal cancer. *Ann Thorac Surg*. 2004;78(4):1152–60 discussion –60.
7. Downey RJ, Akhurst T, Ilson D, et al. Whole body ^{18}F FDG-PET and the response of esophageal cancer to induction therapy: results of a prospective trial. *J Clin Oncol*. 2003;21(3):428–32.
8. Wieder HA, Brucher BL, Zimmermann F, et al. Time course of tumor metabolic activity during chemoradiotherapy of esophageal squamous cell carcinoma and response to treatment. *J Clin Oncol*. 2004;22(5):900–8.
9. Ott K, Weber WA, Lordick F, et al. Metabolic imaging predicts response, survival, and recurrence in adenocarcinomas of the esophagogastric junction. *J Clin Oncol*. 2006;24(29):4692–8.

10. Huang B, Law MW-M, Khong P-L. Whole-body PET/CT scanning: estimation of radiation dose and cancer risk. *Radiology*. 2009;251(1):166–74.
11. Rosenberg R, Herrmann K, Gertler R, et al. The predictive value of metabolic response to preoperative radiochemotherapy in locally advanced rectal cancer measured by PET/CT. *Int J Color Dis*. 2009;24(2):191–200.
12. Lordick F, Ott K, Krause BJ, et al. PET to assess early metabolic response and to guide treatment of adenocarcinoma of the oesophagogastric junction: the MUNICON phase II trial. *Lancet Oncol*. 2007;8(9):797–805.
13. Sridhar P, Mercier G, Tan J, et al. FDG PET metabolic tumor volume segmentation and pathologic volume of primary human solid tumors. *AJR Am J Roentgenol*. 2014;202(5):1114–9.
14. Werner-Wasik M, Nelson AD, Choi W, et al. What is the best way to contour lung tumors on PET scans? Multiobserver validation of a gradient-based method using a NSCLC digital PET phantom. *Int J Radiat Oncol Biol Phys*. 2012;82(3):1164–71.
15. Larson SM, Erdi Y, Akhurst T, et al. Tumor treatment response based on visual and quantitative changes in global tumor glycolysis using PET-FDG imaging. The visual response score and the change in Total lesion glycolysis. *Clin Positron Imaging*. 1999;2(3):159–71.
16. Stahl M, Stuschke M, Lehmann N, et al. Chemoradiation with and without surgery in patients with locally advanced squamous cell carcinoma of the esophagus. *J Clin Oncol*. 2005;23(10):2310–7.
17. Swisher SG, Ajani JA, Komaki R, et al. Long-term outcome of phase II trial evaluating chemotherapy, chemoradiotherapy, and surgery for locoregionally advanced esophageal cancer. *Int J Radiat Oncol Biol Phys*. 2003;57(1):120–7.
18. Weber WA, Ott K, Becker K, et al. Prediction of response to preoperative chemotherapy in adenocarcinomas of the esophagogastric junction by metabolic imaging. *J Clin Oncol*. 2001;19(12):3058–65.
19. Klaeser B, Nitzsche E, Schuller JC, et al. Limited predictive value of FDG-PET for response assessment in the preoperative treatment of esophageal cancer: results of a prospective multi-center trial (SAKK 75/02). *Onkologie*. 2009;32(12):724–30.
20. Ishihara R, Yamamoto S, Iishi H, et al. Predicting the effects of chemoradiotherapy for squamous cell carcinoma of the esophagus by induction chemotherapy response assessed by positron emission tomography: toward PET-response-guided selection of chemoradiotherapy or esophagectomy. *Int J Clin Oncol*. 2012;17(3):225–32.
21. Hatt M, Visvikis D, Albarghach NM, et al. Prognostic value of 18F-FDG PET image-based parameters in oesophageal cancer and impact of tumour delineation methodology. *Eur J Nucl Med Mol Imaging*. 2011;38(7):1191–202.
22. van Rossum PS, Fried DV, Zhang L, et al. The value of (18)F-FDG PET before and after induction chemotherapy for the early prediction of a poor pathologic response to subsequent preoperative chemoradiotherapy in oesophageal adenocarcinoma. *Eur J Nucl Med Mol Imaging*. 2017;44(1):71–80.
23. Roeld JB, Colen RR, Holalkere NS, et al. Adenocarcinomas of the esophagus: response to chemoradiotherapy is associated with decrease of metabolic tumor volume as measured on PET-CT. Comparison to histopathologic and clinical response evaluation. *Radiother Oncol*. 2008;89(3):278–86.
24. Arslan N, Miller TR, Dehdashti F, et al. Evaluation of response to neoadjuvant therapy by quantitative 2-deoxy-2-[18F]fluoro-D-glucose with positron emission tomography in patients with esophageal cancer. *Mol Imaging Biol*. 2002;4(4):301–10.
25. Palie O, Michel P, Menard JF, et al. The predictive value of treatment response using FDG PET performed on day 21 of chemoradiotherapy in patients with oesophageal squamous cell carcinoma. A prospective, multicentre study (RTEP3). *Eur J Nucl Med Mol Imaging*. 2013;40(9):1345–55.
26. Lemarignier C, Di Fiore F, Marre C, et al. Pretreatment metabolic tumour volume is predictive of disease-free survival and overall survival in patients with oesophageal squamous cell carcinoma. *Eur J Nucl Med Mol Imaging*. 2014;41(11):2008–16.
27. Chen SW, Hsieh TC, Ding HJ, et al. Pretreatment metabolic tumor volumes to predict the short-term outcome of unresectable locally advanced squamous cell carcinoma of the esophagus treated with definitive chemoradiotherapy. *Nucl Med Commun*. 2014;35(3):291–7.
28. Vesselle H, Schmidt RA, Pugsley JM, et al. Lung cancer proliferation correlates with [F-18] fluorodeoxyglucose uptake by positron emission tomography. *Clin Cancer Res*. 2000;6(10):3837–44.
29. Clavo AC, Brown RS, Wahl RL. Fluorodeoxyglucose uptake in human cancer cell lines is increased by hypoxia. *J Nucl Med*. 1995;36(9):1625–32.
30. Wakelin SJ, Deans C, Crofts TJ, et al. A comparison of computerised tomography, laparoscopic ultrasound and endoscopic ultrasound in the preoperative staging of oesophago-gastric carcinoma. *Eur J Radiol*. 2002;41(2):161–7.
31. Wallace MB, Nietert PJ, Earle C, et al. An analysis of multiple staging management strategies for carcinoma of the esophagus: computed tomography, endoscopic ultrasound, positron emission tomography, and thoracoscopy/laparoscopy. *Ann Thorac Surg*. 2002;74(4):1026–32.
32. Hautzel H, Muller-Gartner HW. Early changes in fluorine-18-FDG uptake during radiotherapy. *J Nucl Med*. 1997;38(9):1384–6.
33. Lockhart CM, MacDonald LR, Alessio AM, et al. Quantifying and reducing the effect of calibration error on variability of PET/CT standardized uptake value measurements. *J Nucl Med*. 2011;52(2):218–24.

Ready to submit your research? Choose BMC and benefit from:

- fast, convenient online submission
- thorough peer review by experienced researchers in your field
- rapid publication on acceptance
- support for research data, including large and complex data types
- gold Open Access which fosters wider collaboration and increased citations
- maximum visibility for your research: over 100M website views per year

At BMC, research is always in progress.

Learn more biomedcentral.com/submissions

