



## ■ BRIEF COMMUNICATION

Korean J Parasitol Vol. 55, No. 6: 679-684, December 2017  
<https://doi.org/10.3347/kjp.2017.55.6.679>

# Practical Algorithms for PCR-RFLP-Based Genotyping of *Echinococcus granulosus* Sensu Lato

Hye-Jin Kim<sup>1,2</sup>, Tae-Soon Yong<sup>3</sup>, Myeong Heon Shin<sup>3</sup>, Kyu-Jae Lee<sup>4</sup>, Gab-Man Park<sup>5</sup>, Uktamjon Suvonkulov<sup>6</sup>,  
Dmitriy Kovalenko<sup>6</sup>, Hak Sun Yu<sup>1,2,\*</sup>

<sup>1</sup>Department of Parasitology and Tropical Medicine, School of Medicine, Pusan National University, Yangsan 50612, Korea; <sup>2</sup>Immunoregulatory Therapeutics Group in Brain Busan 21 Project; <sup>3</sup>Department of Environmental Medical Biology and Institute of Tropical Medicine, Yonsei University College of Medicine, Seoul 03722, Korea; <sup>4</sup>Department of Environmental Medical Biology, Yonsei University Wonju College of Medicine, Wonju, 26426, Korea; <sup>5</sup>Department of Environmental Medical Biology and Institute for Clinical and Translational Research, Catholic Kwandong University College of Medicine, Gangneung 25601, Korea; <sup>6</sup>Isaev Research Institute of Medical Parasitology, Ministry of Health, Republic of Uzbekistan

**Abstract:** *Echinococcus granulosus* sensu lato (s.l.) is a causative agent of cystic echinococcosis or cystic hydatid disease in humans and domestic and wild animals. The disease is a serious health problem in countries associated with poverty and poor hygiene practices, particularly in livestock raising. We introduced a practical algorithm for genotyping the parasite, which may be useful to many developing countries. To evaluate the efficiency of the algorithm, we genotyped 3 unknown strains isolated from human patients. We found that unknowns 1 and 3 were included in G1, G2, and G3 genotypes group and unknown 2 was included in G4 genotype (*Echinococcus equinus*) according to the algorithms. We confirmed these results by sequencing the 3 unknown isolates *cox1* and *nad1* PCR products. In conclusion, these new algorithms are very fast genotype identification tools that are suitable for evaluating *E. granulosus* s.l. isolated from livestock or livestock holders, particularly in developing countries.

**Key words:** *Echinococcus granulosus*, practical algorithm, genotyping, *cox1*, *nad1*

*Echinococcus granulosus* sensu lato (s.l.) is a causative agent of cystic echinococcosis or cystic hydatid disease in humans and domestic and wild animals [1]. This disease is a serious health problem in countries associated with poverty and poor hygiene practices, particularly livestock raising [2]. Until recently, the taxonomy of *E. granulosus* s.l. spp. has been controversial because of the limited availability of morphological diagnostic characters in both adult and larval stages [3]. The incomplete development of metacestodes in aberrant hosts has further limited the identification of causative organisms. In the 1990s, an Australian research group [4-6] conducted molecular taxonomic analyses of *E. granulosus* s.l. using short mitochondrial DNA sequences of genes for cytochrome *c* oxidase subunit 1 (*cox1*) and NADH dehydrogenase subunit 1 (*nad1*). The analyses showed that *Echinococcus multilocularis*, *Echinococcus vogeli*,

and *Echinococcus oligarthra* are distinct from each other and that *E. granulosus* s.l. can be divided into genotypes G1-G8 [7]. These genotypes correspond to the following strains: *E. granulosus* sensu stricto (s.s.) G1 (sheep strain), G2 (Tasmanian sheep strain), G3 (buffalo strain); *Echinococcus equinus* G4 (horse strain); *Echinococcus ortleppi* G5 (cattle strain); *Echinococcus canadensis* G6 (camel strain), G7 (pig strain), and G8 (cervid strain) [3,8]. Currently, these genotypes are used as standards for molecular classification when considering the epidemiology of cystic echinococcosis [9]. Another *E. canadensis* G9 (unidentified strain) and G10 (Fennoscandian cervid strain) were subsequently characterized [10,11], while the status of G9 remains unclear [3,8].

Although entire or partial gene sequencing is effective for determining genotypes, specialized equipment is required to conduct these costly and time-consuming procedures. In many developing countries, the supply of such equipment is insufficient, and thus PCR-RFLP is frequently used [12,13]. In fact, most countries in which this parasite is prevalent are economically underdeveloped, and thus a simple PCR-RFLP method is necessary. However, PCR-RFLP results must be compared with

•Received 18 October 2017, revised 19 December 2017, accepted 20 December 2017.

\*Corresponding author (hsyu@pusan.ac.kr)

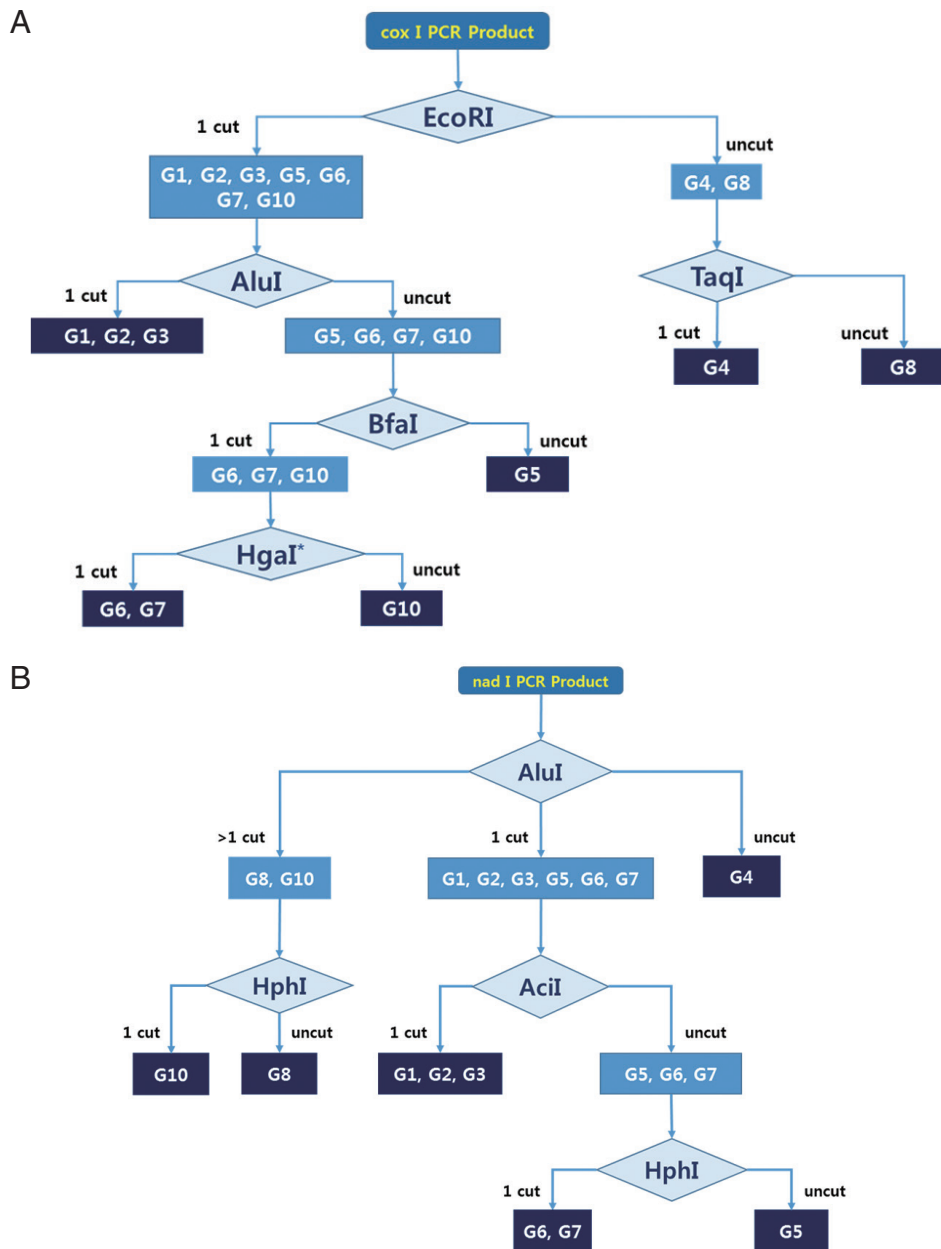
© 2017, Korean Society for Parasitology and Tropical Medicine

This is an Open Access article distributed under the terms of the Creative Commons Attribution Non-Commercial License (<http://creativecommons.org/licenses/by-nc/4.0>) which permits unrestricted non-commercial use, distribution, and reproduction in any medium, provided the original work is properly cited.

previously reported PCR-RFLP results. Using this method, some under-digested DNA fragments may be confused with fully digested fragments, limiting the interpretation of PCR-RFLP results. To overcome this limitation, we developed a PCR-RFLP algorithm involving only 2 or 3 restriction enzymes that produce only 1 or 2 fragments in PCR-RFLP, which is highly helpful for improving the quality of the results.

The *cox1* and *nad1* sequences from 9 *E. granulosus* s.l. geno-

types (G1-G10, except G9) were downloaded from GenBank (<https://www.ncbi.nlm.nih.gov/nucgss>). After multiple alignment (MEGA software version 6), we searched for new PCR target lesions that could produce 1 or 2 fragments after restriction endonuclease digestion using NEBcutter version 2.0 (<http://nc2.neb.com/NEBcutter2/>). The PCR primer sets for *cox1* and *nad1* are constructed like as *cox-f* [CC(C/T) GG(A/G) TTT GGT(A/G) T(A/T) ATT], *cox-r* [ATC(A/G) TG(C/T) AA

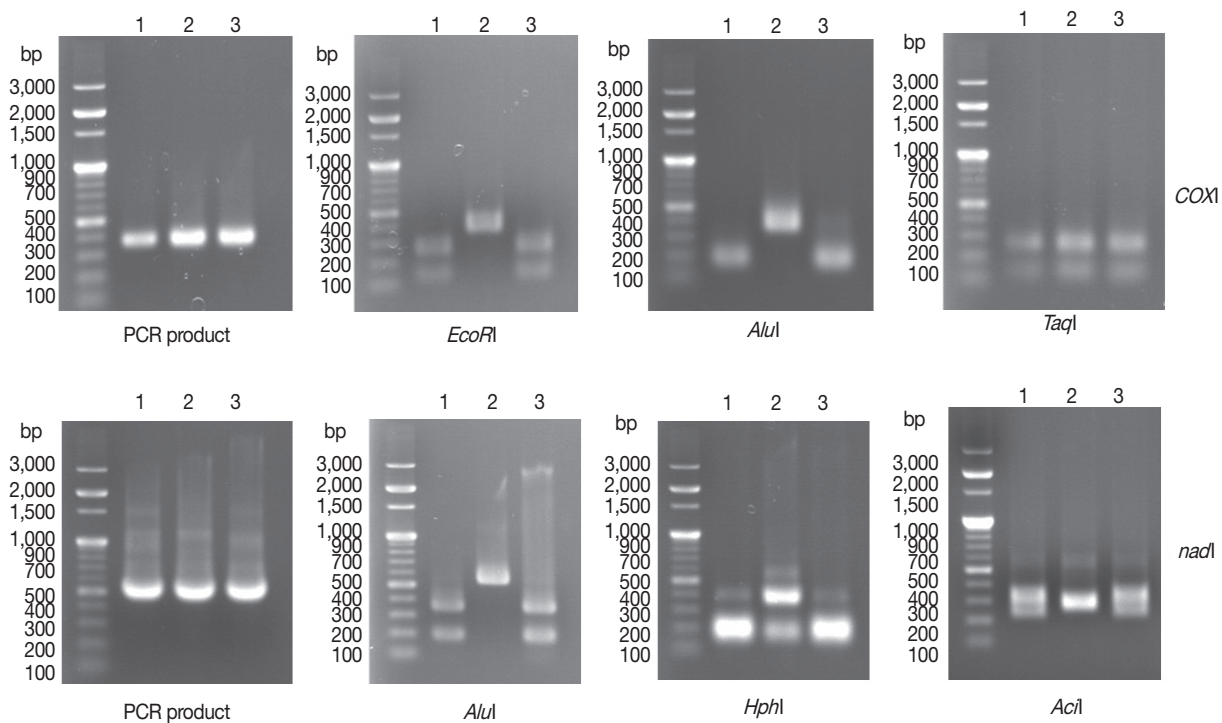


**Fig. 1.** A practical algorithm for *E. granulosus* s.l. genotyping using PCR-RFLP of *cox1* and *nad1*. Schematic representation of hypothetical RFLP by several restriction enzymes. (A) Algorithm for *cox1* PCR-RFLP genotyping. *HgaI\** could be replaced with *Tsp45I* or *BsaHI*. (B) Algorithm for *nad1* PCR-RFLP genotyping.

AA(C/T) ATT ATC], *nad-f* [A(G/A)(A/T) TTC GTA AGG G(G/C) C CIA ATA], and *nad-r* [(A/T)CC(A/T) CT AAC(T/C) AA TTC ACT TTC]. We predicted hypothetical PCR-RFLP fragments based on various endonuclease recognition sites, and selected appropriate restriction enzyme sets for each *cox1* and *nad1* PCR RFLP algorithm. We used more than 10 restriction enzymes for hypothetical RFLP, as it was not possible to identify all genotypes using only 1 enzyme. Our goal was to develop an algorithm that could identify all genotypes using the fewest enzymes. Most genotypes could be distinguished by using a specific restriction enzyme (Supplementary Fig. 1). However, we could not distinguish between the G1-G2, G1-G3, G2-G3, and G6-G7 genotypes using *cox1* and *nad1* PCR-RFLP in this study. Finally, we determined the best algorithm for 2 mitochondrial genes (*cox1*, *nad1*) by comparing band patterns (Fig. 1). To evaluate the algorithm, unidentified genomic DNA was isolated from 3 *Echinococcus* protoscoleces. Three hydatid cyst fluids were collected from patients who underwent medical treatment at Samarqand Hospital in Uzbekistan. The protoscoleces were obtained after centrifugation for 5 min at 2,000

×g. Total genomic DNA was extracted using the QIAamp DNA Mini Kit (Qiagen, Hilden, Germany) according to the manufacturer instructions. The genomic DNA was eluted in 200 µl of water and stored at -20°C until PCR amplification. The extracted genomic DNA was amplified using noble primer sets for 2 mitochondrial DNA genes. PCR was carried out in a final volume of 50 µl containing 5 µl genomic DNA, 10X EF-Taq Reaction Buffer (25 mM MgCl<sub>2</sub> mixed), 2 µl of 10 mM dNTPs, 5 µl of 10 pmol of each primer, and 1 µl (2.5 U) of Di-Star™ EF-Taq DNA Polymerase in a thermocycler (Takara, Shiga, Japan).

The following temperature profile was used for *cox1* amplification: initial denaturation at 94°C for 30 sec; followed by 35 cycles of denaturation at 94°C for 30 sec, annealing at 42°C for 45 sec, and elongation at 72°C for 35 sec. This was followed by final extension at 72°C for 10 min. The following temperature profile was used for *nad1* amplification: initial denaturation at 94°C for 30 sec; followed by 35 cycles of denaturation at 94°C for 30 sec, annealing at 45°C for 45 sec, and elongation at 72°C for 35 sec. Final extension was performed at 72°C for 10 min.



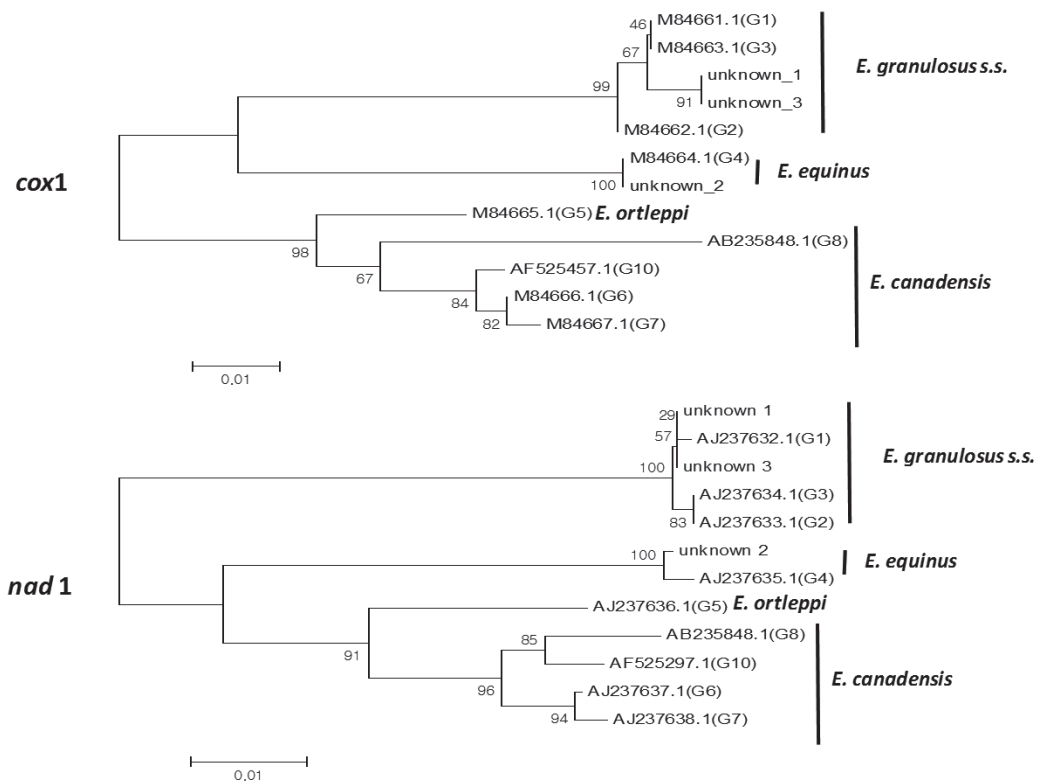
**Fig. 2.** Agarose gel electrophoretogram of PCR products and PCR-RFLP of 3 unidentified *Echinococcus* sp. isolated from echinococcosis patients. After PCR, each 5 µl PCR products of *cox1* and *nad1* were loaded onto a 1.0% agarose gel with 100-bp DNA ladder. The *cox1* gene PCR products were digested with *EcoRI*, *AluI*, and *TaqI* according to noble genotyping algorithm. For *nad1* PCR products, *AluI*, *HphI*, and *AclI* were used for PCR-RFLP algorithm. No. 1 and No. 3 isolates were identified as *E. granulosus* s.s. (G1-G3), but No 2. isolate was identified as *E. equinus* (G4). The 100-bp DNA Ladder Marker (Enzymonics) was used as a size marker.

PCR products were confirmed on 1.0% agarose gels under ultraviolet (UV) light. The PCR products were digested for 2-3 hr at 37°C by 4 restriction enzymes (*AluI*, *EcoRI*, *Acil*, and *HphI*) and at 65°C by the restriction enzyme *TaqI*. Restriction fragments were separated on 1.5% agarose gels and photographed under UV light. After 1% agarose gel electrophoresis of *cox1* and *nad1* PCR products, we obtained 350-base pair (bp) (expected size 366 bp) *cox1* PCR products and 500-bp (expected size 530 bp) *nad1* PCR products (Fig. 2) from 3 human *Echinococcus* sample. After digestion of *cox1* gene PCR products with *EcoRI*, 2 PCR-RFLP patterns were observed. The genotypes of the 2 samples (unknowns 1 and 3) were likely G1, G2, G3, G5, G6, G7, or G10, while that of unknown 2 was likely G4 or G8. After *AluI* digestion, we found that unknowns 1 and 3 were included in *E. granulosus* s.s. (G1, G2, and G3 genotypes). Finally, we found that unknown 2 was included in *E. equinus* (G4 genotype) based on *TaqI* digestion. For the *nad1* PCR-RFLP genotyping algorithm, the same results were observed for 3 different restriction enzymes (*AluI*, *HphI*, and *Acil*) (Fig. 2).

To confirm the PCR-RFLP algorithm, *nad1* and *cox1* PCR products of unidentified genotypes were sequenced after puri-

fying the PCR products with Expin™ PCR SV (GeneAll Biotech, Seoul, Korea). Sequences and the reference *E. granulosus* s.l. genotype sequences were subjected to multiple alignment and phylogenetic distances were calculated using BLAST (<http://www.ncbi.nlm.nih.gov/>) and MEGA software version 6. Phylogenetic trees were constructed using the neighbor-joining method in MEGA software version 6.0. DNA sequencing yielded consensus sequences of the *cox1* and *nad1* genes. Key reference sequences for genotyping were used according to previous studies [14,15]. Sequences analysis of *cox1* PCR products using alignment and phylogenetic analysis with reference sequences indicated that unknowns 1 and 3 were very similar to the sequences of G1 (99% identity), G2 (99% identity) and G3 (99% identity). The entire sequence of *cox1* PCR product of unknown 2 was identical to that of the G4 genotype (Fig. 3). For *nad1* gene sequence analysis, although there were some insignificant differences, we obtained similar results as those obtained for *cox1* (Fig. 3).

Based on morphological characteristics, 4 species are currently recognized in the genus *Echinococcus*: *E. multilocularis*, *E. vogeli*, *E. oligarthra*, and *E. granulosus* s.l. Other species such as *E.*



**Fig. 3.** Phylogenetic relationship of isolates and other genotypes previously identified. The *cox1* and *nad1* PCR products of *E. granulosus* isolates were sequenced and aligned with reference sequences.

*shiquicus*, *E. felidis*, *E. ortleppi*, *E. equinus*, *E. canadensis* and *E. intermedius* are currently classified as *E. granulosus* s.l. [3,8,16,17]. We constructed practical algorithm for rapid genotyping of *E. granulosus* s.l. isolated from human and domestic animals using only 1-3 restriction enzymes. This method is less cost and more rapid than sequencing analysis. Although G1, G2, and G3 were not distinguished by this algorithm, these genotypes have been recognized as the same species, *E. granulosus* s.s. [15,18,19]. The algorithm distinguished G8 and G10 from the G6/G7 complex, but *E. canadensis* G6 and G7 could not be distinguished. Previous studies were also unable to separate the G6/G7 complex using mitochondria DNA, ITS1, and 18S ribosomal DNA sequencing [8,20].

There were some limitations to this study. The algorithms were developed for only 9 genotypes (G1-G10, except G9) of *E. granulosus* s.l. and not for *E. felidis*, *E. multilocularis*, *E. shiquicus*, *E. oligarthra*, and *E. vogeli*, which use wild animals as their intermediated hosts [8]. However, among these species, only *E. multilocularis* is known to commonly infect humans and is not found in domestic animals. Additionally, the morphological characteristics of their hydatid cysts are quite different from those of *E. granulosus* s.l. [20]. In these cases, genetic classification may be unnecessary for specific identification. Interestingly, we identified the first human infection case of *E. equinus* (Fig. 3). No human infections by the G4 genotype have been detected previously [21].

## ACKNOWLEDGMENT

This work was supported by the Korea International Cooperation Agency (KOICA) under the title of "Capacity Building of Infectious and Parasitic Diseases Control in the Republic of Uzbekistan" in 2014 (no. P2014-00076-1).

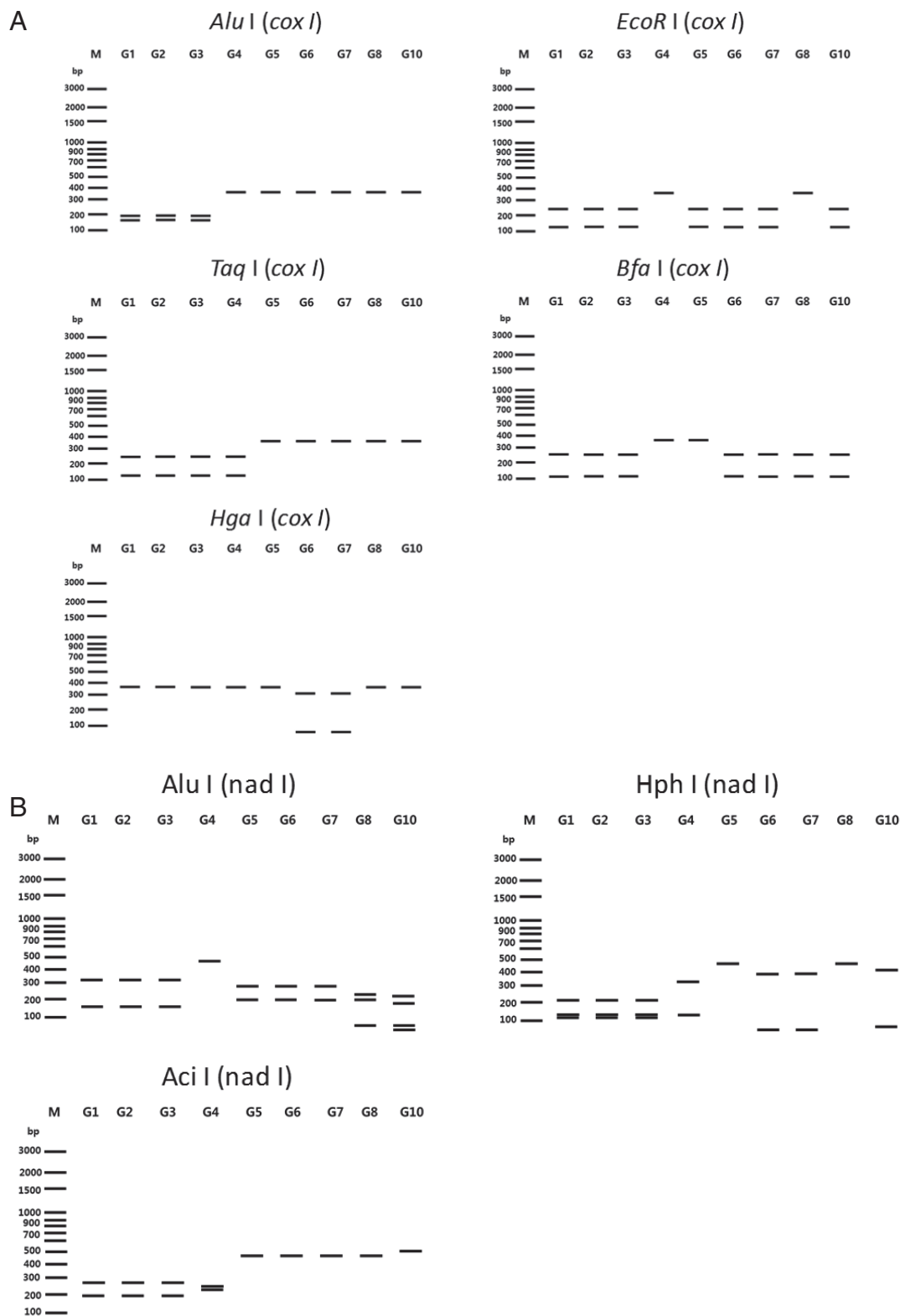
## CONFLICT OF INTEREST

We have no conflict of interest related to this study.

## REFERENCES

1. Thompson RCA, Lymbery AJ. *Echinococcus* and Hydatid Disease. Wallingford, Oxfordshire, UK. CAB International. 1995, pp xii, 477.
2. Cardona GA, Carmena D. A review of the global prevalence, molecular epidemiology and economics of cystic echinococcosis in production animals. *Vet Parasitol* 2013; 192: 10-32.
3. Knapp J, Gottstein B, Saarma U, Millon L. Taxonomy, phylogeny and molecular epidemiology of *Echinococcus multilocularis*: from fundamental knowledge to health ecology. *Vet Parasitol* 2015; 213: 85-91.
4. Bowles J, Blair D, McManus DP. Genetic variants within the genus *Echinococcus* identified by mitochondrial DNA sequencing. *Mol Biochem Parasitol* 1992; 54: 165-173.
5. Bowles J, McManus DP. Rapid discrimination of *Echinococcus* species and strains using a polymerase chain reaction-based RFLP method. *Mol Biochem Parasitol* 1993; 57: 231-239.
6. Bowles J, McManus DP. Molecular variation in *Echinococcus*. *Acta Trop* 1993; 53: 291-305.
7. Bowles J, McManus DP. NADH dehydrogenase 1 gene sequences compared for species and strains of the genus *Echinococcus*. *Int J Parasitol* 1993; 23: 969-972.
8. Nakao M, Lavikainen A, Yanagida T, Ito A. Phylogenetic systematics of the genus *Echinococcus* (Cestoda: Taeniidae). *Int J Parasitol* 2013; 43: 1017-1029.
9. McManus DP, Thompson RC. Molecular epidemiology of cystic echinococcosis. *Parasitology* 2003; 127 (suppl): 37-51.
10. Scott JC, Stefaniak J, Pawlowski ZS, McManus DP. Molecular genetic analysis of human cystic hydatid cases from Poland: identification of a new genotypic group (G9) of *Echinococcus granulosus*. *Parasitology* 1997; 114: 37-43.
11. Lavikainen A, Lehtinen MJ, Meri T, Hirvelä-Koski V, Meri S. Molecular genetic characterization of the Fennoscandian cervid strain, a new genotypic group (G10) of *Echinococcus granulosus*. *Parasitology* 2003; 127: 207-215.
12. Chaabane-Banaoues R, Oudni-M'rad M, M'Rad S, Amani H, Mezhoud H, Babba H. A novel PCR-RFLP assay for molecular characterization of *Echinococcus granulosus* sensu lato and closely related species in developing countries. *Parasitol Res* 2016; 115: 3817-3824.
13. Moghaddas E, Borji H, Naghibi A, Shayan P, Razmi GR. Molecular genotyping of *Echinococcus granulosus* from dromedaries (*Camelus dromedarius*) in eastern Iran. *J Helminthol* 2015; 89: 100-104.
14. Ahmed ME, Eltom KH, Musa NO, Ali IA, Elamin FM, Grobusch MP, Aradaib IE. First report on circulation of *Echinococcus ortleppi* in the one humped camel (*Camelus dromedaries*), Sudan. *BMC Vet Res* 2013; 9: 127.
15. Sharbatkhori M, Fasihi Harandi M, Mirhendi H, Hajjalilo E, Kia EB. Sequence analysis of *cox1* and *nad1* genes in *Echinococcus granulosus* G3 genotype in camels (*Camelus dromedarius*) from central Iran. *Parasitol Res* 2011; 108: 521-527.
16. Thompson RC, McManus DP. Towards a taxonomic revision of the genus *Echinococcus*. *Trends Parasitol* 2002; 18: 452-457.
17. Thompson RC, Lymbery AJ, Constantine CC. Variation in *Echinococcus*: towards a taxonomic revision of the genus. *Adv Parasitol* 1995; 35: 145-176.
18. Piccoli L, Bazzocchi C, Brunetti E, Mihailescu P, Bandi C, Mastalier B, Cordos I, Beuran M, Popa LG, Meroni V, Genco F, Cretu C. Molecular characterization of *Echinococcus granulosus* in south-eastern Romania: evidence of G1-G3 and G6-G10 complexes in

- humans. *Clin Microbiol Infect* 2013; 19: 578-582.
19. Boubaker G, Macchiaroli N, Prada L, Cucher MA, Rosenzvit MC, Ziadinov I, Deplazes P, Saarma U, Babba H, Gottstein B, Spiliotis M. A multiplex PCR for the simultaneous detection and genotyping of the *Echinococcus granulosus* complex. *PLoS Negl Trop Dis* 2013; 7: e2017.
  20. Nakao M, McManus DP, Schantz PM, Craig PS, Ito A. A molecular phylogeny of the genus *Echinococcus* inferred from complete mitochondrial genomes. *Parasitology* 2007; 134: 713-722.
  21. Alvarez Rojas CA, Romig T, Lightowers MW. *Echinococcus granulosus* sensu lato genotypes infecting humans--review of current knowledge. *Int J Parasitol* 2014; 44: 9-18.



**Supplementary Fig. 1.** Schematic representation of hypothetical RFLP of *E. granulosus* s.l. species using four restriction enzymes. (A) The hypothetical pattern of bands using PCR product of *cox I* by *Alu I*, *EcoR I*, *Taq I*, *Bfa I*, and *Hga I*. (B) The hypothetical pattern of bands using PCR products of *nad I* gene by *Alu I*, *Hph I*, and *Aci I*. The 100 bp DNA Ladder Marker (Enzymomics, Daejeon, Korea) was used as a size marker.