



### 저작자표시-비영리-변경금지 2.0 대한민국

이용자는 아래의 조건을 따르는 경우에 한하여 자유롭게

- 이 저작물을 복제, 배포, 전송, 전시, 공연 및 방송할 수 있습니다.

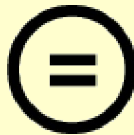
다음과 같은 조건을 따라야 합니다:



저작자표시. 귀하는 원저작자를 표시하여야 합니다.



비영리. 귀하는 이 저작물을 영리 목적으로 이용할 수 없습니다.



변경금지. 귀하는 이 저작물을 개작, 변형 또는 가공할 수 없습니다.

- 귀하는, 이 저작물의 재이용이나 배포의 경우, 이 저작물에 적용된 이용허락조건을 명확하게 나타내어야 합니다.
- 저작권자로부터 별도의 허가를 받으면 이러한 조건들은 적용되지 않습니다.

저작권법에 따른 이용자의 권리는 위의 내용에 의하여 영향을 받지 않습니다.

이것은 [이용허락규약\(Legal Code\)](#)을 이해하기 쉽게 요약한 것입니다.

[Disclaimer](#)

**The effect of DPP-4 inhibitor on angiogenic  
regeneration by bone marrow mesenchymal stem cell in  
hind limb ischemia injury model**



**Heejung Lim**

**The Graduate School Yonsei University  
Graduate Program in Science for Aging  
Molecular Biology**

**The effect of DPP-4 inhibitor on angiogenic  
regeneration by bone marrow mesenchymal stem cell in  
hindlimb ischemia injury model**

**Directed by professor Young-Guk Ko**



**The Master's Thesis Submitted to the  
Department of Science for Aging,  
the Graduate School of Yonsei University  
in partial fulfillment of the requirements for the  
degree of Master of Science for Aging**

**Heejung Lim**

**June 2015**

**This certifies that the Master's Thesis of  
Hee Jung Lim is approved.**



---

Thesis Supervisor: Young-Guk Ko



---

Thesis Committee Member #1: Donghoon Choi



---

Thesis Committee Member #2: Jong-Chan Youn

**The Graduate School**

**Yonsei University**

**June 2015**

## ACKNOWLEDGEMENTS

I dedicate this acknowledgement to all those thankful people who have supported me to finish my graduate school Master's course.

First of all, I would like to thank my supervising professor Yong-Guk Ko. It has been most honorable to have been able to be a student under your supervision. Thank you for always giving me warm support despite my shortcomings. I also want to thank you, Professor Donghoon Choi, for your great advices and for pointing me in the right direction. I want to express my gratitude to Professor Jon-Chan Youn for your many discussions and insight regarding my thesis topic. I will always thank all of you for your many big life lessons during my ongoing life journey.

I express my deepest gratitude to Dr. Jaewon Oh for helping me with groundwork of my Master's thesis. I also thank Dr. Seahyoung Lee for the advices you gave me. Thank you Nary Lim, it would have been more meaningful if you were here with me but I am glad that I had the opportunity to work with and learn from you before your time off. Jung-Eun Si, I thank you for always being there for me throughout my research and handling every situation like it was your own. I will never be able to forget the memories we share.

I want to thank Dr. Seongho Bae and Dr. Soon-Joong Kim for your infinite discussions and advices.

Beom Seob Lee, you have been the senior colleague who I could always count on. Thank you, I will always treasure the kindness you have shown me even in times when you were busy. I want to thank Bo-Kyung Kim and my graduation buddy Jin Sil Park, for their support and friendship. Thank you Subin Jung and Seul Gee Lee, I wish you the best in your upcoming graduation next semester. Moreover, I thank everyone at the science for aging department. I hope you all achieve the best in your research. Special thanks to my colleague and friend Minji Seung for her support and friendship.

Last but not least, I thank my parents and lovely two sisters for their unlimited support and love. I would not have been able to finish this chapter of my life without my family's support. I love you all and wish for our never-ending happiness.

Thank you all once more. I wish everyone a happy life full of exciting challenges!

**Hee Jung Lim**

**June 2015**

## TABLE OF CONTENTS

<b>ABSTRACT</b> .....	I
<b>I. INTRODUCTION</b> .....	1
<b>II. MATERIALS AND METHODS</b> .....	5
1. Reagents .....	5
2. Animals .....	5
3. Cell Culture .....	6
4. Mouse Hind limb Ischemia .....	6
5. Sitagliptin Administration and hMSCs Transplantation .....	6
6. Measurement of Laser Doppler Blood Perfusion Imaging .....	7
7. Histological Assessment for Capillary Density .....	7
8. Immunoblot analysis .....	8
9. Reverse transcription polymerase reaction (RT-PCR) .....	10
10. Statistical Analysis .....	11

### **III. RESULTS**

1. Sitagliptin-hMSCs administration promoted reperfusion of blood flow in the ischemia limbs .....	12
2. Sitagliptin-hMSCS improve angiogenesis in ischemic hind limb .....	17
3. Sitagliptin-hMSCs increases VEGF expression in hind limb ischemia muscle .....	20
4. Sitagliptin-hMSCs increases SDF-1 expression and secretion in hind limb ischemia .....	23
5. Sitagliptin increases CXCR4 expression in hind limb ischemia muscle .....	26
<b>IV. DISCUSSION</b> .....	29
<b>V. CONCLUSION</b> .....	32
<b>VI. REFERENCE</b> .....	33
<b>ABSTRACT (In Korean)</b> .....	46



## LIST OF FIGURES

Figure 1. Femoral artery blood flow by laser-Doppler perfusion imaging incombination of sitagliptin-hMSCs increases neovascularization in hind limb ischemia .....	13
Figure 2. Effects of sitagliptin-hMSCs on angiogenesis in ischemic limbs .....	18
Figure 3. Effects of sitagliptin-hMSCs on VEGF expression levels hind limb ischemia injury model .....	21
Figure 4. Effects of sitagliptin-hMSCs on SDF-1 expression levels in hind limb ischemia model .....	24
Figure 5. Effects of sitagliptin on CXCR4 expression levels in hind limb ischemia .....	27

## LIST OF TABLES

Table 1. PCR primers used in this study ..... 10



**ABSTRACT**

**The effect of DPP-4 inhibitor on angiogenic  
regeneration by bone marrow mesenchymal stem cell in  
hindlimb ischemia injury model**

**Heejung Lim**

**Graduate program of Science for Aging  
The Graduate School, Yonsei University**

**(Directed by Professor Young-Guk Ko)**

**Background:** Mesenchymal stem cells (MSCs) are known to have a therapeutic potential for severe limb ischemia. However, poor survival of implanted MSCs in the target tissue remains as an important factor that attenuates the angiogenic

potential of the cell therapy.

Thus, we investigated whether sitagliptin, a DPP-4 inhibitor, may enhance the angiogenic efficacy of MSC in a hind limb ischemia murine model by increasing production of SDF-1.

**Methods and Results:** Mice with induced hind limb ischemia were divided into 4 groups; group 1 treated with oral saline and local injection of saline, group 2 treated with oral sitagliptin and local injection of saline, group 3 treated with oral saline and local injection of MSCs, and group 4 treated with oral sitagliptin and local injection of MSCs. Angiogenic responses were measured by laser-Doppler perfusion imaging, muscle capillary density, and protein and mRNA expression of SDF-1, CXCR4, and vascular endothelial growth factor VEGF growth factors and compared among the treatment groups.

The combined treatment of oral sitagliptin and local injection of MSCs achieved more effective angiogenic response than oral sitagliptin administration or local MSC transplantation alone in a mouse hind limb ischemia model. The combination therapy also demonstrated increased expression of VEGF, SDF-1 and CXCR4 in hind limb ischemia models.

**Conclusion:** The combination therapy of oral sitagliptin and local

transplantation of MSCs was more effective in enhancing angiogenic responses to ischemia than oral sitagliptin or local transplantation of MSCs alone possibly due to up-regulation of SDF-1.



---

Key Words: Hind-limb ischemia, sitagliptin, SDF-1/CXCR4, angiogenesis, Laser Doppler

**The effect of DPP-4 inhibitor on angiogenic  
regeneration by bone marrow mesenchymal stem cell in  
hindlimb ischemia injury model**

**Heejung Lim**

**Graduate program in Science for Aging  
The Graduate School, Yonsei University**

**(Directed by Professor Young-Guk Ko)**

**I. INTRODUCTION**

Critical limb ischemia (CLI), disease known to affect quality of life and survival, is the most severe form of occlusive atherosclerosis. It is a terminal

peripheral artery disease and presents with chronic ischemic pain, ulcers and/or tissue gangrene <sup>1-4</sup>. These patients frequently have multiple levels of vascular obstruction making collateral blood vessel formation difficult. When endovascular or surgical treatment fails or is not feasible, there are no other known therapies that may effectively rescue the ischemic limb.

Mesenchymal stem cells (MSC) are pluripotent stem cells that can differentiate into osteoblasts, chondrocytes, adipocytes, neurons, skeletal muscle cells, endothelial cells and vascular smooth muscle cells <sup>3,5-10</sup>. They are also known to secrete various cytokines that promote angiogenesis and vasculogenesis. Furthermore, MSCs are considered advantageous for clinical application of cell therapy since they do not induce immunological responses and therefore do not need main histocompatibility match for allogeneic transplantation <sup>9,11</sup>. Therapeutic angiogenesis or vasculogenesis is a treatment targeted to induce new blood vessel formation for improved perfusion of ischemic tissues <sup>12,13</sup> and has a promising potential for the treatment of CLI. Several studies reported that transplanted MSCs induced angiogenesis and improved blood flow to ischemic limbs in rat models of hind limb ischemia <sup>7,14,15</sup>. However, due to the local hypoxia, oxidative stress and inflammation in

the target ischemic tissue, the survival of transplanted MSCs is poor and the therapeutic effects remain attenuated. Thus, it is critical to find techniques to enhance survival of transplanted MSCs in the target tissue.

Stromal-derived factor (SDF)-1, is also known as CXCL12, a potent chemoattractant of stem cells and progenitor cells. SDF-1 is mainly expressed by bone marrow stromal cells and endothelial cells and its production is increased under ischemic conditions. SDF-1 plays a significant role in the process involving stem/progenitor cell chemotaxis and organ-specific homing in ischemic tissue through interaction with its receptor CXC chemokine receptor 4 (CXCR4) on the surface of stem/progenitor cells. Administration of SDF-1 has shown to increase the number of circulating endothelial progenitor cells (EPCs) and to improve endothelial function <sup>16,17</sup>. SDF-1 also improved cardiomyocyte survival, neovascularization, and cardiac function after myocardial infarction <sup>18-21</sup>.

Recent studies reported that oral sitagliptin, an inhibitor of dipeptidyl peptidase-4 (DPP-4) was able to increase circulating endothelial progenitor cells possibly by up-regulation of SDF-1. DPP-4 is known to cleave various bioactive molecules such as SDF-1 and glucagon-like peptide-1 (GLP-1) <sup>16,22,23</sup>.



Therefore, the purpose of this study is to investigate whether combined treatment of oral sitagliptin and local injection of MSCs may have synergistic effects on angiogenesis and blood perfusion recovery in a murine hind limb ischemia model by up-regulation of SDF-1.



## **II. MATERIALS AND METHODS**

### **2.1. Reagents**

Sitagliptin (Januvia®) was purchased from Merck. Anti-VEGF (1:1000), Anti-SDF-1 (1:1000), and Anti-CXCR4 (1:1000) antibodies were obtained from Abcam (Cambridge, MA, USA), and Anti-GAPDH was purchased from Santa Cruz Biotechnologies (Santa Cruz, CA, USA).

### **2.2. Animals**

All female C57BL/6 mice at 7-week-old (20-22g body weight) were purchased from Orient Bio (Sunnam, Korea). A total of 28 mice were divided into 4 groups; group 1 treated with oral saline and local injection of saline, group 2 treated with oral sitagliptin and local injection of saline, group 3 treated with oral saline and local injection of MSCs, and group 4 treated with oral sitagliptin and local injection of MSCs. Experiments were approved by the Institutional Animals Care and Use Committee of Yonsei University College of Medicine and performed in accordance with “Guide for the Care and Use of Laboratory Animals” published by the US National Institutes of Health (NIH Publication No. 85-23, revised 1996).

### **2.3. Cell Culture**

Human mesenchymal stem cells (hMSCs) were obtained from Lonza Walkersville Inc. (Walkersville, MD, USA). The hMSCs were maintained under DMEM-low glucose (Gibco, Grand Island, NY, USA) with 10% fetal bovine serum (Gibco), 1% penicillin/streptomycin at 37°C humidified atmosphere containing 5% CO<sub>2</sub>-95% air. DMEM was refreshed every one day until sub-confluent. All experiments were performed using cells between passage numbers 5 to 7.

### **2.4. Mouse Hind limb Ischemia**

The mice were anesthetized by an intraperitoneal injection of 0.05mg/kg (Zoetile Virbac, Carros Cedex, France) and xylazine 0.15ml/kg (Rompen, Bayer, Leverkusen, Germany). After the skin incision, the proximal and distal portions of the external femoral artery and all of the above saphenous artery was ligated. The femoral arterial and all side branches artery were dissected and excised<sup>20</sup>.

### **2.5. Sitagliptin Administration and hMSC Transplantation**

Sitagliptin (Januvia®) was obtained from Merck Sharp & Dohme Corp Korea. Sitagliptin 20 mg/kg body weight or 500 µl of saline per mouse was

administered daily after the onset of ischemia using oral gavage. Local injection of MSC ( $10^6$  cells/200  $\mu$ l) or saline 200  $\mu$ l into the ischemic thigh muscle of four different sites was performed using with a 26 gauge needle under local anesthesia at 3 days after induction of the hind limb ischemia. Sitagliptin (20mg/kg BW), or saline was orally administered for 28day.

## **2.6. Measurement of Laser Doppler Blood Perfusion Imaging**

A laser-Doppler image system (Moor LDI2, Moor Instruments, Axminster, UK) was used to measure blood flow perfusion before and at 7, 21, and 28 days after limb ischemia surgery. Before imaging, excess fur were removed from the limbs using depilatory cream, and mice were placed on a temperature controller at 37°C. Relative blood perfusion data were expressed as the ratio of the ischemic (left) to non-ischemic (right) limb blood flow.

## **2.7. Histological Assessment for Capillary Density**

Ischemic limb gastrocnemius muscle were harvested 28 days after induction of ischemia, immersion-fixed with 4% buffered paraformaldehyde, and subsequently embedded in paraffin. Rabbit anti-mouse CD31 (dilution 1:200; polyclonal; Abcam) was used to determine the capillary density on 2- $\mu$ m-thick paraffin-embedded sections using standard immunofluorescence. This measurement was determined in three randomly selected low-power (original

magnification x200) fields from each animal, and the average value was used as a single data for each animal.

## **2.8. Immunoblot analysis**

For immunoblotting, homogenates and sonicator of limb muscle tissue were analyzed. Equal amounts of proteins were loaded and separated in 10%, 12.5% and 15% SDS-polyacrylamide/bis-acrylamide gel electrophoresis and transferred to poly vinylidene difluoride membrane (Bio-Rad Laboratories, Inc. Hercules, CA, USA). The membrane was blocked for 1hr by 10% skim milk. Thereafter, the membrane was washed 3 times with TBS-tween 20 (TBS-T, 0.1% tween 20) for 7 min at room temperature. Membrane was incubated with primary antibodies for overnight at 4°C. Membrane was washed five times with TBS-T for 7 min, and incubated for 1hr at room temperature with horseradish peroxidase (HRP)-conjugated secondary antibodies. After extensive washing, the bands were evaluated.

## **2.9. Reverse transcription polymerase reaction (RT-PCR)**

Total RNA from frozen muscle was isolated using the Qiazol-Reagent. cDNA synthesis was then performed using 1ug of RNA with the TaKaRa Ex Taq™ polymerase (Takara Bio, Otsu, Shiga, Japan). Levels of mRNA were analyzed by RT-PCR using the primers shown in Table 1. PCR products were

separated by electrophoresis in a 1.2% agarose-gel containing Gel-red (Biotium, Hayward, CA, USA).



**Table 1. PCR primers used in this study**

Gene	Primer	Size(bp)	Temp.(°C)
VEGF	5'- GTA CCT CCA CCA TGC CAA GT -3' 5'- GCA TTC ACA TCT GCT GTG CT -3'	340	58
SDF-1	5'-GCT CTG CAT CAG TGA CGG TA -3' 5'- CTT TTC TGG GCA GCC TTT CT -3'	306	58
CXCR4	5'- TCC TGC CCA CCA TCT ACT TC -3' 5'- TTT CAG CCA GCA GTT TCC TT -3'	342	58
GAPDH	5'- ACT CCA CTC ACG GCA AAT TC-3' 5'- CCT TCC ACA ATG CCA AAG TT -3'	370	58



## **2.10. Statistical Analysis**

Statistical analysis was performed using IBM PASW Statistics 20.0 software (IBM Corp, Armonk, NY, USA). All results are expressed as means  $\pm$  standard deviation. Comparisons of continuous variables among the groups were performed using Student's t test or ANOVA. A P value of  $<0.05$  was considered statistically significant.



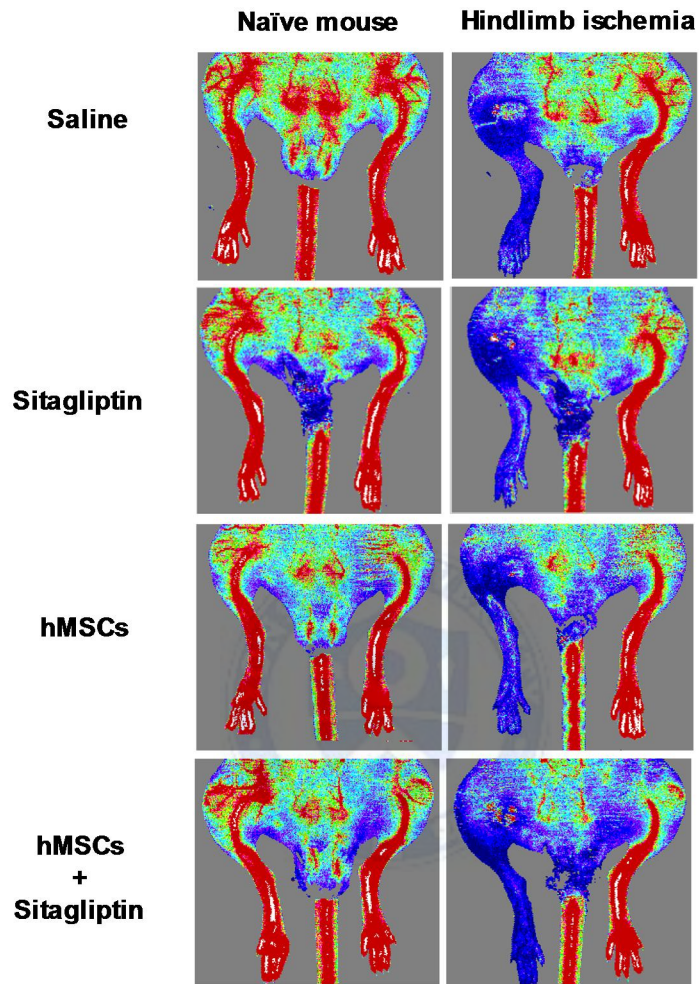


### **III. RESULTS**

#### **1. Sitagliptin-hMSCs administration promoted reperfusion of blood flow in the ischemia limbs**

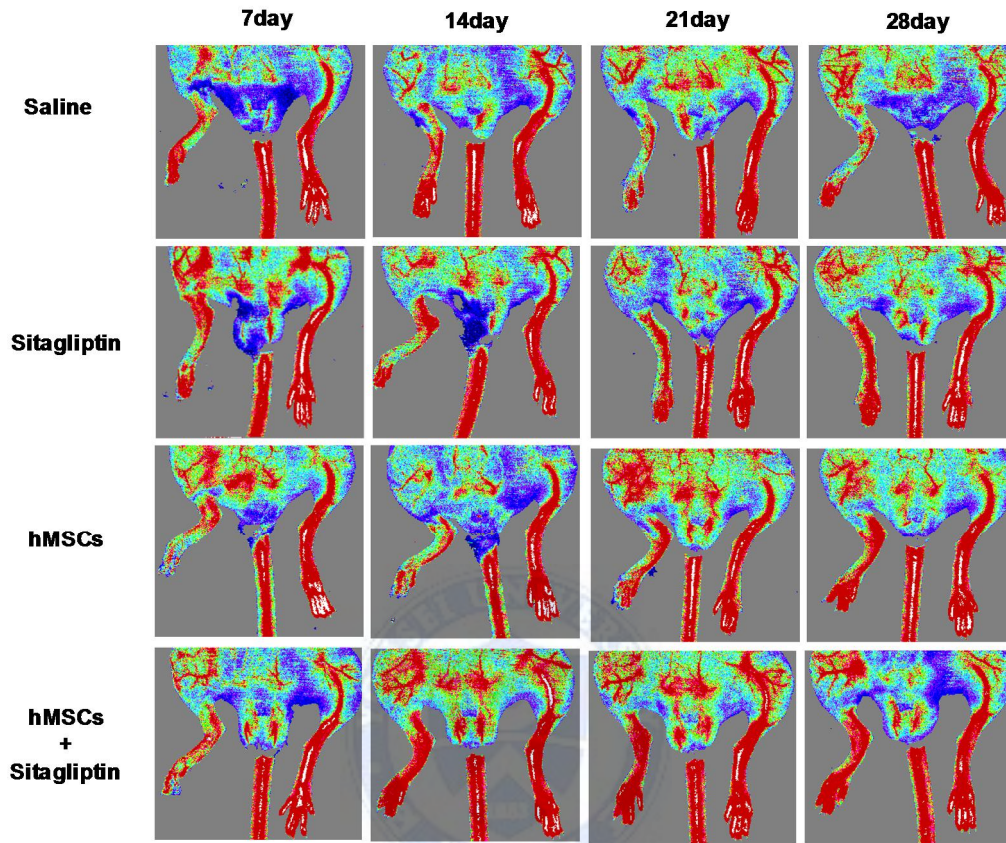
Representative images of laser Doppler perfusion scan before and immediately after induction of hind limb ischemia were shown in Figure 1A. Serial follow-up images of laser Doppler perfusion scan at 7, 14, 21, and 28 days were presented in Figure 1B. At 28 day, group 4 with combined therapy of oral sitagliptin and local hMSCs showed the highest blood perfusion ratio ( $0.60 \pm 0.1$ ;  $P < 0.05$  vs. other groups). The blood perfusion ratio in group 2 and 3 was  $0.48 \pm 0.08$  and  $0.55 \pm 0.09$ , respectively. These values were significantly higher than that of group 1 ( $0.44 \pm 0.12$ ,  $P < 0.05$ ). However, the combined use of sitagliptin-hMSCs further improved angiogenesis (perfusion ratio of). There was no significant difference in blood flow for sitagliptin administration and saline between days 7 and 28 (Figure 1C).

**A**



**Figure 1 legend (the following page)**

**B**



**Figure 1 legend (the following page)**

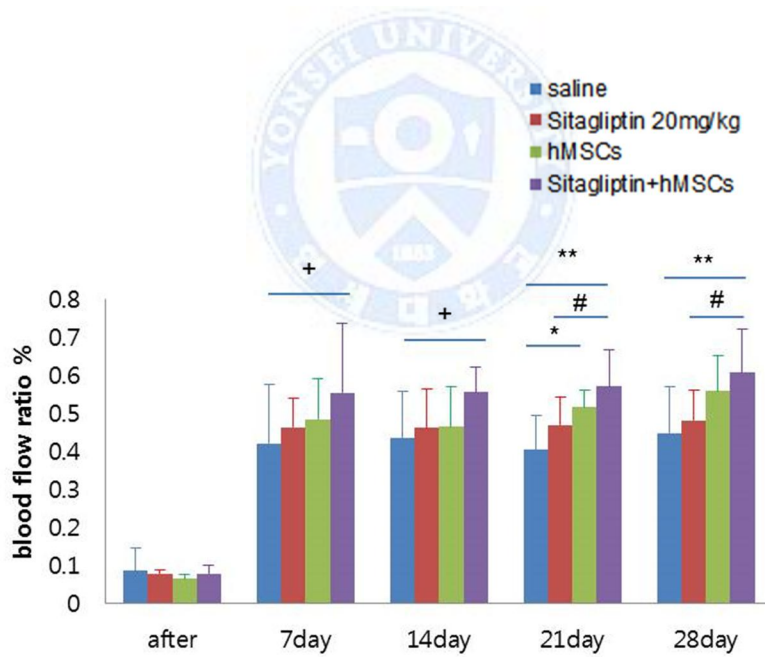
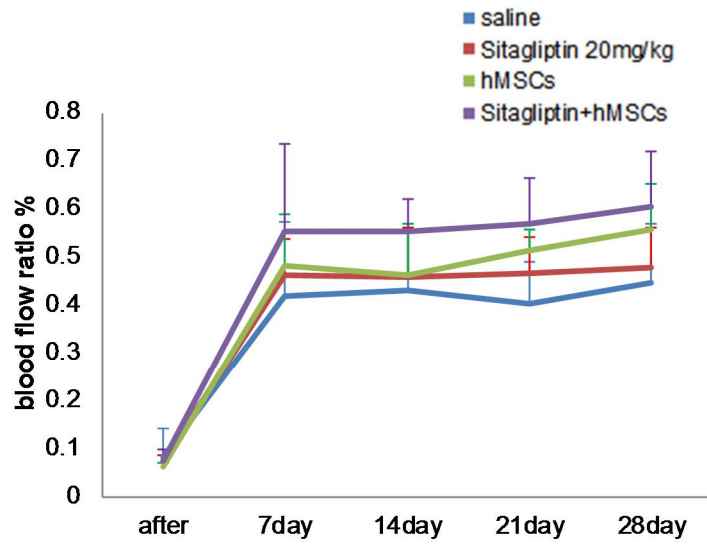
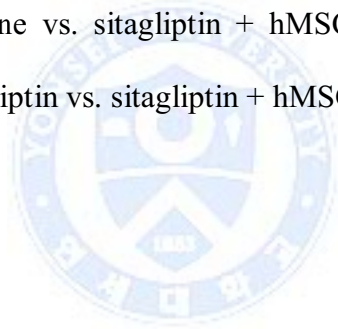


Figure 1 legend (the following page)

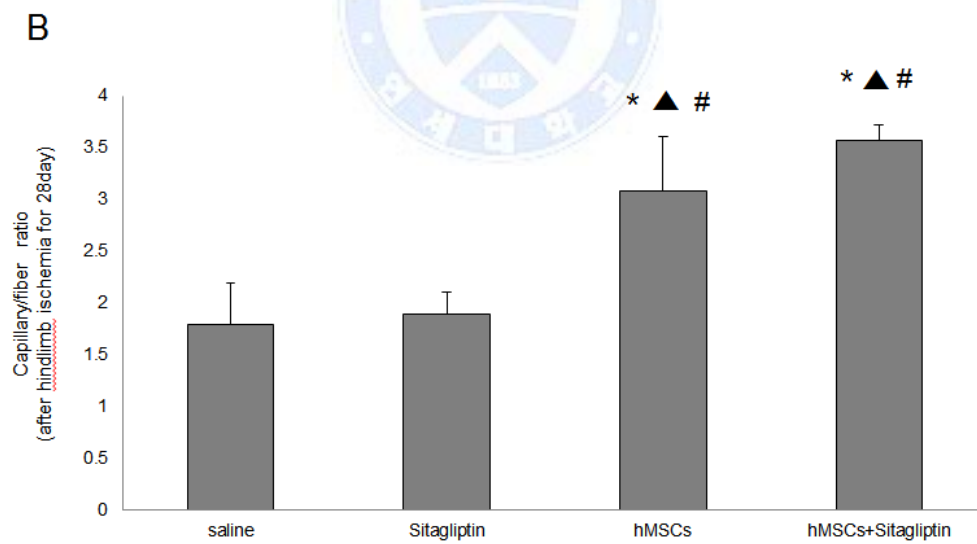
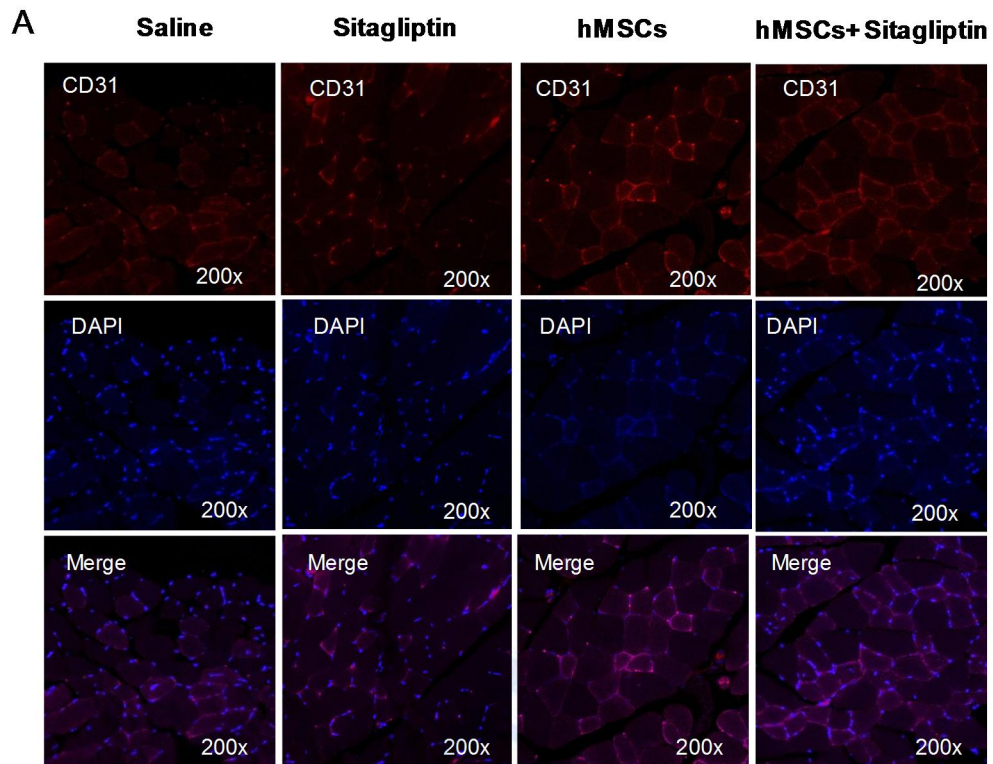
**Figure 1. Femoral artery blood flow by laser-Doppler perfusion imaging in combination of sitagliptin-hMSCs increases neovascularization in hind limb ischemia.** (A) Representative results of laser Doppler perfusion imaging before and immediately after induction of hind limb ischemia (left, ischemic; right non-ischemic hind limbs); (B) Representative results of laser Doppler perfusion imaging at 7, 14, 21 and 28days after hind limb ischemia surgery. In color-coded images, normal blood perfusion is displayed as *red*, whereas low or absent blood perfusion is displayed as *blue*; (C) Laser-Doppler ischemic/non-ischemic limb blood perfusion ratios. (\*\* $P < 0.01$  for saline vs. sitagliptin + hMSCs; + $p < 0.05$  for saline vs. sitagliptin + hMSCs; \* $p < 0.01$  for saline vs. hMSCs, # $p < 0.05$  for sitagliptin vs. sitagliptin + hMSCs)



## 2. Sitagliptin-hMSCS improve angiogenesis in ischemic hind limb

Immunohistochemical staining of the shows CD31- and DAPI-positive cells (Figure 3A). The capillary density was significantly higher in group 3 (hMSCs) and 4 (sitagliptin-hMSCs) than in group 1 (saline) or 2 (sitagliptin) ( $*p < 0.01$  vs. saline group;  $\blacktriangle p < 0.01$  vs. Sitagliptin;  $\#p < 0.01$  vs. MSC) (Figure 3B). There was no significant difference in capillary density between group 3 and 4. However, there was a trend toward a higher capillary density in group 4.





**Figure 2 legend (the following page)**



**Figure 2. Effects of sitagliptin-hMSCs on angiogenesis in ischemic limbs. (A)**

Capillaries (*red*) were identified by CD31 staining, a marker for endothelial cells.

CD31 was also observed with confocal microscopy using primary anti-

PECAM1 antibody and Alexa-conjugated secondary antibody. (B)

Quantitatively expressed as a capillary number per muscle fiber on 28days after operation (n=3; for each experimental group, original magnification, x200).

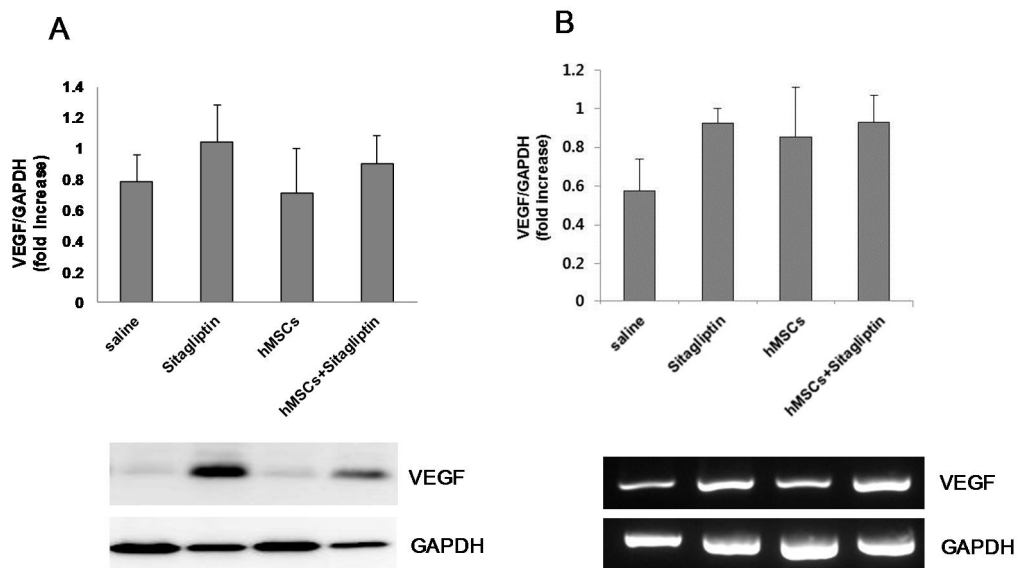




### **3. Sitagliptin-hMSCs increases VEGF expression in hind limb ischemia muscle**

Representative Western blot data of VEGF protein expression are shown in Figure 3. There was increased VEGF expression in group 2 and group 4 compared to group 1 or group 3 (Figure 3A). Similarly to protein expression, that total RNA expression of VEGF was higher in group 2 and 4 group compared to that in group 1 and 3 (Figure 3B)





**Figure 3. Effects of sitagliptin-hMSCs on VEGF expression levels hind limb ischemia injury model.** (A) Gastrocnemius muscle tissues were collected at 7 days after hind-limb ischemia injury. Muscle tissue lysates were separated by SDS-PAGE gel and analyzed by immunoblot analysis with antibodies against anti-VEGF and anti-GADPH antibody. (GADPH was loading control n=4). The protein expression of VEGF was slightly increased in group 2 (sitagliptin) and group 4 (sitagliptin-hMSCs) than in group 1 (saline) and group 3 (hMSCs). (B) Total RNA was analyzed by Reverse transcription-polymerase chain reaction

(RT-PCR) using primers specific of VEGF and GAPDH gene in ischemic muscle tissues (GAPDH was used as the internal control. n=4). The total RNA expressions of VEGF was slightly increased in group 2 (sitagliptin) and group 4 (sitagliptin-hMSCs) than in other groups.



#### **4. Sitagliin-hMSCs increases SDF-1 expression and secretion in hind limb ischemia**

Western blot data show no significant difference in SDF-1 protein expression among the groups (Figure 4A). However, there was increased RNA expression of SDF-1 in group 3 and 4 compared to that of group 1 and 2. However, SDF-1 RNA expression was similar between group 3 and 4 (Figure 4B). Interestingly, western blot analysis using serum showed significantly increased protein level of SDF-1 in group 4 compared with other groups (Figure 4C).



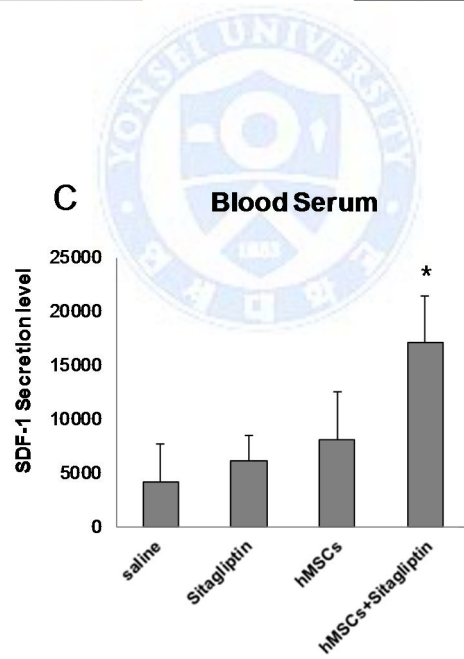
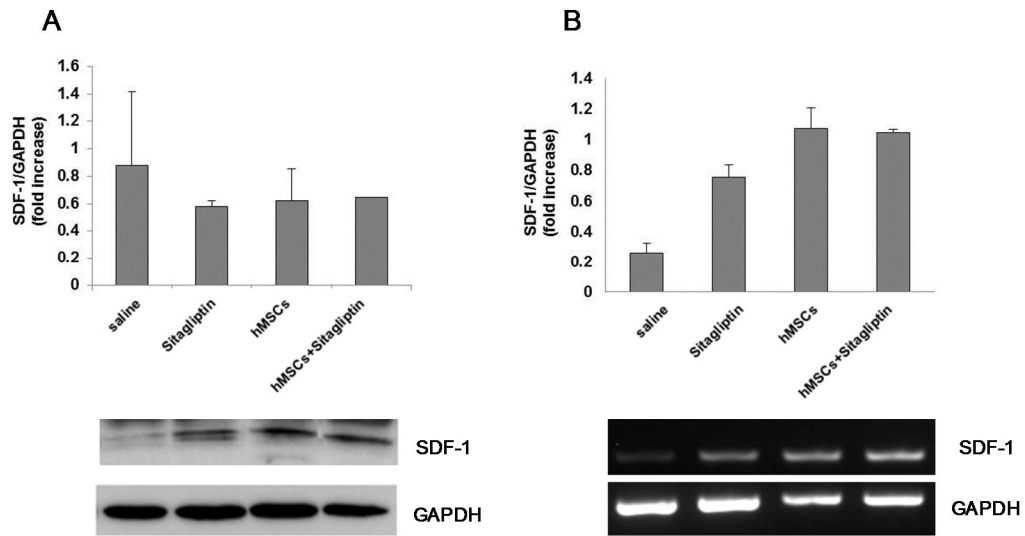


Figure 4 legend (the following page)

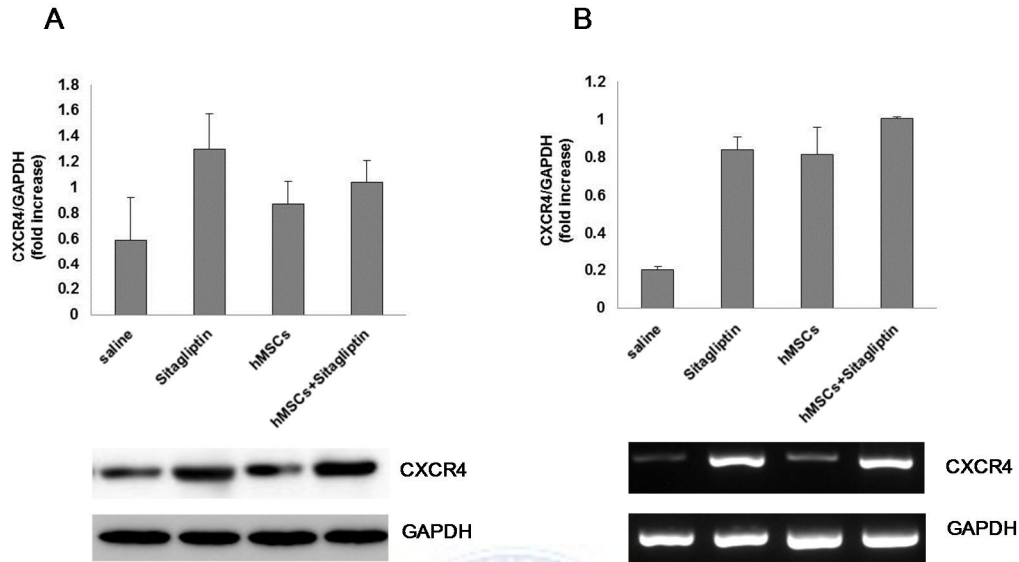
**Figure 4. Effects of sitagliptin-hMSCs on SDF-1 expression levels in hind limb ischemia model.** (A) Representative Western blot of SDF-1 protein level in the gastrocnemius muscle tissues at 7 days after limb ischemic injury (n=2). The protein expression of SDF-1 was lower in group 1 (saline) than in other groups. (GADPH was used as the internal control. n=2). (B) RNA was analyzed by Reverse transcription-polymerase chain reaction (RT-PCR) using primers specific of SDF and GAPDH gene in ischemic muscle tissues. (GAPDH was used as the internal control. n=4). (C) The protein expression of SDF-1 was significant higher in sitagliptin-hMSCs combination therapy group than in other groups (n = 4) \* $P < 0.01$



## **5. Sitagliptin increases CXCR4 expression in hind limb ischemia muscle**

There was increased expression level of CXCR4 in group 2 and 4 than in group 1 and 3 (Figure 5A). RNA expression level of CXCR4 similarly increased in group 2, 3, and 4 was higher than in group 1 (Figure 5B).





**Figure 5. Effects of sitagliptin on CXCR4 expression levels in hind limb ischemia.** (A) Gastrocnemius muscle tissues were collected 7 days after hind-limb ischemia injury. Muscle tissue lysates were separated by SDS-PAGE gel and analyzed by immunoblot analysis with antibodies against anti-CXCR4 and anti-GADPH antibody. (GADPH was used as the internal control. n=4). The protein expression of CXCR4 was increased in group 2 (sitagliptin) and group 4 (sitagliptin-hMSCs) than in group 1 (saline) and group 3 (hMSCs). (B) RNA was analyzed by Reverse transcription-polymerase chain reaction (RT-PCR) using primers specific of CXCR4 and GAPDH gene in ischemic muscle tissues



(GAPDH was used as the internal control. n=4). The RNA expression of CXCR4 was significantly higher in group 2 (sitagliptin) and group 4 (sitagliptin-hMSCs).



#### **IV. DISCUSSION**

The major finding of study was that combined treatment of oral sitagliptin and local injection of MSCs achieved more effective angiogenic response in a mouse hind limb ischemia model than oral sitagliptin administration or local MSC transplantation alone. The combination therapy was associated with increased expression of VEGF, SDF-1 and CXCR4.

Mesenchymal stem cell (MSC) is a multipotent stem cell that can differentiate into a variety of cell types. Various studies demonstrated therapeutic angiogenic effects of MSCs in animal models of peripheral arterial disease and myocardial infarction <sup>5,15,24,25</sup>. However, the mechanisms underlying the effects of MDSCs remain still unclear. Stem cell can either directly increase angiogenesis by transforming into endothelial cells and proliferation or indirectly by secreting various angiogenic growth factors and anti-apoptotic factors. But, there are several shortcomings in using MSCs for cell therapy of ischemic diseases. The repair capability of MSCs declines with age and diseases <sup>24,26-29</sup>. Also, the viability of MSCs in ischemic condition is low. Thus, it is crucial to improve MSC survival against the hypoxia and hypertrophic microenvironment <sup>30-33</sup>. There have been various studies focused

on treatment strategies to improve survival of transplanted MSCs in the target organs<sup>34-37</sup>.

Sitagliptin, an anti-diabetic drug, is an inhibitor of DPP-4. DPP-4 cleaves various substrates, including GLP-1 and SDF-1. Increased activity of DPP-4 in blood has shown to decrease the circulating concentration of SDF-1a<sup>38</sup>. SDF-1 has been found to be involved in mobilization and recruitment of endothelial progenitor cells after arterial injury in mice<sup>39,40</sup>. Up-regulation of SDF-1, CXCR4, and VEGF in the damaged tissue has been shown to play a critical role in recruiting stem cells to ischemic tissue<sup>19,41,42</sup>. Another experiment study demonstrated that SDF-1 pretreatment can improve MSC migration, cytokine production, and cell survival after exposure to hypoxia<sup>43-45</sup>. In our study, expressions of SDF-1, CXCR4, VEGF were increased in all animals treated with oral sitagliptin, local transplantation of MSCs, or the combined treatment compared with control group. However, we could not prove whether the expression of these angiogenic factors was statistically higher in the combination group than in the monotherapy of sitagliptin or MSCs due to small numbers of study animals. However, there was significantly improved angiogenic response measured in blood flow ratio by laser Doppler perfusion scan and capillary density for the combination therapy group than monotherapy of oral sitagliptin or local transplantation of MSCs. Therefore, we

assume that additive effects of sitagliptin and MSCs may be achieved by up-regulation of SDF-1/CXCR4 axis and activation of MSCs.

A major limitation of the present study was that insufficient data to prove working mechanisms of the combined therapy of sitagliptin and MSCs for improved angiogenic response. Furthermore, we could not also demonstrate prolonged survival or increased activity of MSCs in ischemic limbs.



## V. CONCLUSION

The combination therapy of oral sitagliptin and local transplantation of MSCs was more effective in enhancing angiogenic responses to limb ischemia than oral sitagliptin or local transplantation of MSCs alone possibly due to up-regulation of SDF-1. Our results suggest that this combined treatment may have a potential as a new therapeutic strategy to treat severe peripheral arterial disease.



## VI. REFERENCE

1. Norgren L, Hiatt WR, Dormandy JA, Nehler MR, Harris KA, Fowkes FG, Bell K, Caporusso J, Durand-Zaleski I, Komori K, Lammer J, Liapis C, Novo S, Razavi M, Robbs J, Schaper N, Shigematsu H, Sapoval M, White C, White J, Clement D, Creager M, Jaff M, Mohler E, 3rd, Rutherford RB, Sheehan P, Sillesen H, Rosenfield K. Inter-Society Consensus for the Management of Peripheral Arterial Disease (TASC II). *Eur J Vasc Endovasc Surg.* 2007;33 Suppl 1:S1-75.
2. Gupta NK, Armstrong EJ, Parikh SA. The current state of stem cell therapy for peripheral artery disease. *Curr Cardiol Rep.* 2014;16:447.
3. Izquierdo-Porrera AM, Gardner AW, Bradham DD, Montgomery PS, Sorkin JD, Powell CC, Katzel LI. Relationship between objective measures of peripheral arterial disease severity to self-reported quality of life in older adults with intermittent claudication. *J Vasc Surg.* 2005;41:625-630.
4. Hirsch AT, Haskal ZJ, Hertzner NR, Bakal CW, Creager MA, Halperin JL,

Hiratzka LF, Murphy WR, Olin JW, Puschett JB, Rosenfield KA, Sacks D, Stanley JC, Taylor LM, Jr., White CJ, White J, White RA, Antman EM, Smith SC, Jr., Adams CD, Anderson JL, Faxon DP, Fuster V, Gibbons RJ, Hunt SA, Jacobs AK, Nishimura R, Ornato JP, Page RL, Riegel B. ACC/AHA 2005 Practice Guidelines for the management of patients with peripheral arterial disease (lower extremity, renal, mesenteric, and abdominal aortic): a collaborative report from the American Association for Vascular Surgery/Society for Vascular Surgery, Society for Cardiovascular Angiography and Interventions, Society for Vascular Medicine and Biology, Society of Interventional Radiology, and the ACC/AHA Task Force on Practice Guidelines (Writing Committee to Develop Guidelines for the Management of Patients With Peripheral Arterial Disease): endorsed by the American Association of Cardiovascular and Pulmonary Rehabilitation; National Heart, Lung, and Blood Institute; Society for Vascular Nursing; TransAtlantic Inter-Society Consensus; and Vascular Disease Foundation. *Circulation*. 2006;113:e463-654.

5. Mikami S, Nakashima A, Nakagawa K, Maruhashi T, Iwamoto Y, Kajikawa M, Matsumoto T, Kihara Y, Chayama K, Noma K, Ochi M,

Nishimura M, Tsuji K, Kato Y, Goto C, Higashi Y. Autologous bone-marrow mesenchymal stem cell implantation and endothelial function in a rabbit ischemic limb model. *PLoS One*. 2013;8:e67739.

6. Horwitz EM, Prockop DJ, Fitzpatrick LA, Koo WW, Gordon PL, Neel M, Sussman M, Orchard P, Marx JC, Pyeritz RE, Brenner MK. Transplantability and therapeutic effects of bone marrow-derived mesenchymal cells in children with osteogenesis imperfecta. *Nat Med*. 1999;5:309-313.
7. Iwase T, Nagaya N, Fujii T, Itoh T, Murakami S, Matsumoto T, Kangawa K, Kitamura S. Comparison of angiogenic potency between mesenchymal stem cells and mononuclear cells in a rat model of hindlimb ischemia. *Cardiovasc Res*. 2005;66:543-551.
8. Makino S, Fukuda K, Miyoshi S, Konishi F, Kodama H, Pan J, Sano M, Takahashi T, Hori S, Abe H, Hata J, Umezawa A, Ogawa S. Cardiomyocytes can be generated from marrow stromal cells in vitro. *J Clin Invest*. 1999;103:697-705.



9. Pittenger MF, Mackay AM, Beck SC, Jaiswal RK, Douglas R, Mosca JD, Moorman MA, Simonetti DW, Craig S, Marshak DR. Multilineage potential of adult human mesenchymal stem cells. *Science*. 1999;284:143-147.
10. Silva GV, Litovsky S, Assad JA, Sousa AL, Martin BJ, Vela D, Coulter SC, Lin J, Ober J, Vaughn WK, Branco RV, Oliveira EM, He R, Geng YJ, Willerson JT, Perin EC. Mesenchymal stem cells differentiate into an endothelial phenotype, enhance vascular density, and improve heart function in a canine chronic ischemia model. *Circulation*. 2005;111:150-156.
11. Griffin MD, Ritter T, Mahon BP. Immunological aspects of allogeneic mesenchymal stem cell therapies. *Hum Gene Ther*. 2010;21:1641-1655.
12. Kochi T, Imai Y, Takeda A, Watanabe Y, Mori S, Tachi M, Kodama T. Characterization of the arterial anatomy of the murine hindlimb: functional role in the design and understanding of ischemia models. *PLoS One*. 2013;8:e84047.

13. Orlic D, Kajstura J, Chimenti S, Jakoniuk I, Anderson SM, Li B, Pickel J, McKay R, Nadal-Ginard B, Bodine DM, Leri A, Anversa P. Bone marrow cells regenerate infarcted myocardium. *Nature*. 2001;410:701-705.
14. Hamano K, Li TS, Kobayashi T, Tanaka N, Kobayashi S, Matsuzaki M, Esato K. The induction of angiogenesis by the implantation of autologous bone marrow cells: a novel and simple therapeutic method. *Surgery*. 2001;130:44-54.
15. Lee EJ, Park HW, Jeon HJ, Kim HS, Chang MS. Potentiated therapeutic angiogenesis by primed human mesenchymal stem cells in a mouse model of hindlimb ischemia. *Regen Med*. 2013;8:283-293.
16. Fadini GP, Boscaro E, Albiero M, Menegazzo L, Frison V, de Kreutzenberg S, Agostini C, Tiengo A, Avogaro A. The oral dipeptidyl peptidase-4 inhibitor sitagliptin increases circulating endothelial progenitor cells in patients with type 2 diabetes: possible role of stromal-derived factor-1alpha. *Diabetes Care*. 2010;33:1607-1609.

17. Oeseburg H, de Boer RA, Buikema H, van der Harst P, van Gilst WH, Sillje HH. Glucagon-like peptide 1 prevents reactive oxygen species-induced endothelial cell senescence through the activation of protein kinase A. *Arterioscler Thromb Vasc Biol.* 2010;30:1407-1414.
18. Gupta SK, Lysko PG, Pillarisetti K, Ohlstein E, Stadel JM. Chemokine receptors in human endothelial cells. Functional expression of CXCR4 and its transcriptional regulation by inflammatory cytokines. *J Biol Chem.* 1998;273:4282-4287.
19. Yamaguchi J, Kusano KF, Masuo O, Kawamoto A, Silver M, Murasawa S, Bosch-Marce M, Masuda H, Losordo DW, Isner JM, Asahara T. Stromal cell-derived factor-1 effects on ex vivo expanded endothelial progenitor cell recruitment for ischemic neovascularization. *Circulation.* 2003;107:1322-1328.
20. Zerneck A, Schober A, Bot I, von Hundelshausen P, Liehn EA, Mopps B, Mericskay M, Gierschik P, Biessen EA, Weber C. SDF-1alpha/CXCR4 axis is instrumental in neointimal hyperplasia and recruitment of smooth muscle progenitor cells. *Circ Res.* 2005;96:784-

791.

21. Kucia M, Dawn B, Hunt G, Guo Y, Wysoczynski M, Majka M, Ratajczak J, Rezzoug F, Ildstad ST, Bolli R, Ratajczak MZ. Cells expressing early cardiac markers reside in the bone marrow and are mobilized into the peripheral blood after myocardial infarction. *Circ Res.* 2004;95:1191-1199.
22. Bermpohl F, Loster K, Reutter W, Baum O. Rat dipeptidyl peptidase IV (DPP IV) exhibits endopeptidase activity with specificity for denatured fibrillar collagens. *FEBS Lett.* 1998;428:152-156.
23. Sun CK, Leu S, Sheu JJ, Tsai TH, Sung HC, Chen YL, Chung SY, Ko SF, Chang HW, Yip HK. Paradoxical impairment of angiogenesis, endothelial function and circulating number of endothelial progenitor cells in DPP4-deficient rat after critical limb ischemia. *Stem Cell Res Ther.* 2013;4:31.
24. Khan M, Ali F, Mohsin S, Akhtar S, Mehmood A, Choudhery MS, Khan SN, Riazuddin S. Preconditioning diabetic mesenchymal stem cells with

myogenic medium increases their ability to repair diabetic heart. *Stem Cell Res Ther.* 2013;4:58.

25. Kinnaird T, Stabile E, Burnett MS, Shou M, Lee CW, Barr S, Fuchs S, Epstein SE. Local delivery of marrow-derived stromal cells augments collateral perfusion through paracrine mechanisms. *Circulation.* 2004;109:1543-1549.
26. Kretlow JD, Jin YQ, Liu W, Zhang WJ, Hong TH, Zhou G, Baggett LS, Mikos AG, Cao Y. Donor age and cell passage affects differentiation potential of murine bone marrow-derived stem cells. *BMC Cell Biol.* 2008;9:60.
27. Li X, Liu L, Meng D, Wang D, Zhang J, Shi D, Liu H, Xu H, Lu L, Sun L. Enhanced apoptosis and senescence of bone-marrow-derived mesenchymal stem cells in patients with systemic lupus erythematosus. *Stem Cells Dev.* 2012;21:2387-2394.
28. Alt EU, Senst C, Murthy SN, Slakey DP, Dupin CL, Chaffin AE, Kadowitz PJ, Izadpanah R. Aging alters tissue resident mesenchymal

stem cell properties. *Stem Cell Res.* 2012;8:215-225.

29. Khan M, Mohsin S, Khan SN, Riazuddin S. Repair of senescent myocardium by mesenchymal stem cells is dependent on the age of donor mice. *J Cell Mol Med.* 2011;15:1515-1527.
30. Huang WH, Chen HL, Huang PH, Yew TL, Lin MW, Lin SJ, Hung SC. Hypoxic mesenchymal stem cells engraft and ameliorate limb ischaemia in allogeneic recipients. *Cardiovasc Res.* 2014;101:266-276.
31. Hung SC, Pochampally RR, Chen SC, Hsu SC, Prockop DJ. Angiogenic effects of human multipotent stromal cell conditioned medium activate the PI3K-Akt pathway in hypoxic endothelial cells to inhibit apoptosis, increase survival, and stimulate angiogenesis. *Stem Cells.* 2007;25:2363-2370.
32. Hwang HJ, Chang W, Song BW, Song H, Cha MJ, Kim IK, Lim S, Choi EJ, Ham O, Lee SY, Shim J, Joung B, Pak HN, Kim SS, Choi BR, Jang Y, Lee MH, Hwang KC. Antiarrhythmic potential of mesenchymal stem cell is modulated by hypoxic environment. *J Am Coll Cardiol.*

2012;60:1698-1706.

33. Tsai CC, Chen YJ, Yew TL, Chen LL, Wang JY, Chiu CH, Hung SC. Hypoxia inhibits senescence and maintains mesenchymal stem cell properties through down-regulation of E2A-p21 by HIF-TWIST. *Blood*. 2011;117:459-469.
34. Huang B, Qian J, Ma J, Huang Z, Shen Y, Chen X, Sun A, Ge J, Chen H. Myocardial transfection of hypoxia-inducible factor-1alpha and co-transplantation of mesenchymal stem cells enhance cardiac repair in rats with experimental myocardial infarction. *Stem Cell Res Ther*. 2014;5:22.
35. Liu J, Hao H, Huang H, Tong C, Ti D, Dong L, Chen D, Zhao Y, Liu H, Han W, Fu X. Hypoxia regulates the therapeutic potential of mesenchymal stem cells through enhanced autophagy. *Int J Low Extrem Wounds*. 2015;14:63-72.
36. Xue X, Liu Y, Zhang J, Liu T, Yang Z, Wang H. Bcl-xL Genetic Modification Enhanced the Therapeutic Efficacy of Mesenchymal Stem Cell Transplantation in the Treatment of Heart Infarction. *Stem Cells Int*.

2015;2015:176409.

37. Zhang M, Mal N, Kiedrowski M, Chacko M, Askari AT, Popovic ZB, Koc ON, Penn MS. SDF-1 expression by mesenchymal stem cells results in trophic support of cardiac myocytes after myocardial infarction. *Faseb j.* 2007;21:3197-3207.
38. Wang CH, Verma S, Hsieh IC, Chen YJ, Kuo LT, Yang NI, Wang SY, Wu MY, Hsu CM, Cheng CW, Cherng WJ. Enalapril increases ischemia-induced endothelial progenitor cell mobilization through manipulation of the CD26 system. *J Mol Cell Cardiol.* 2006;41:34-43.
39. Yin Y, Zhao X, Fang Y, Yu S, Zhao J, Song M, Huang L. SDF-1alpha involved in mobilization and recruitment of endothelial progenitor cells after arterial injury in mice. *Cardiovasc Pathol.* 2010;19:218-227.
40. Chua S, Sheu JJ, Chen YL, Chang LT, Sun CK, Leu S, Sung HC, Tsai TH, Chung SY, Yeh KH, Cho CL, Kao YH, Yip HK. Sitagliptin therapy enhances the number of circulating angiogenic cells and angiogenesis-evaluations in vitro and in the rat critical limb ischemia model.



*Cytotherapy*. 2013;15:1148-1163.

41. Ceradini DJ, Kulkarni AR, Callaghan MJ, Tepper OM, Bastidas N, Kleinman ME, Capla JM, Galiano RD, Levine JP, Gurtner GC. Progenitor cell trafficking is regulated by hypoxic gradients through HIF-1 induction of SDF-1. *Nat Med*. 2004;10:858-864.
42. von Degenfeld G, Banfi A, Springer ML, Wagner RA, Jacobi J, Ozawa CR, Merchant MJ, Cooke JP, Blau HM. Microenvironmental VEGF distribution is critical for stable and functional vessel growth in ischemia. *Faseb j*. 2006;20:2657-2659.
43. Liu X, Duan B, Cheng Z, Jia X, Mao L, Fu H, Che Y, Ou L, Liu L, Kong D. SDF-1/CXCR4 axis modulates bone marrow mesenchymal stem cell apoptosis, migration and cytokine secretion. *Protein Cell*. 2011;2:845-854.
44. Rochefort GY, Delorme B, Lopez A, Herault O, Bonnet P, Charbord P, Eder V, Domenech J. Multipotential mesenchymal stem cells are mobilized into peripheral blood by hypoxia. *Stem Cells*. 2006;24:2202-

2208.

45. Xu R, Chen J, Cong X, Hu S, Chen X. Lovastatin protects mesenchymal stem cells against hypoxia- and serum deprivation-induced apoptosis by activation of PI3K/Akt and ERK1/2. *J Cell Biochem.* 2008;103:256-269.

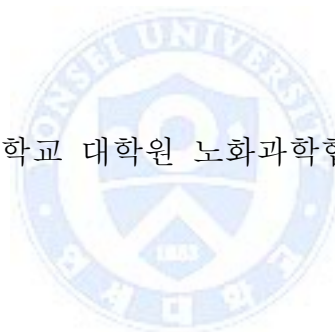


**ABSTRACT (in Korean)**

하지허혈 모델에서 골수유래 중간엽줄기세포의 혈관재생효과에  
미치는 DPP4 저해제의 영향에 관한 연구

<지도교수 고 영 국>

연세대학교 대학원 노화과학협동과정



임 희 정

**Background:** 중간 엽 줄기 세포는 중증 하지 허혈에 대한 치료 가능성을 갖는 것으로 알려져 있다. 그러나 허혈 조직에 중간 엽 줄기 세포 주입이 낮은 생존율로 인해 줄기세포 치료의 혈관 신생을

약화 시키는 것이 중요한 요인이다. 따라서 우리는 sitagliptin, DPP-4 억제제가 SDF-1 의 발현에 의해 하지 허혈 쥐 모델에서 중간엽 줄기세포의 혈관 신생 반응을 향상 시킬 수 있는지 알아보려고 한다.

Methods and Results: 하지 허혈 유도 후 네 군으로 분류하였다. 각각 Group 1 saline 경구 투여, group 2 는 sitagliptin 경구 투여, group 3 saline 경구 투여 및 중간엽 줄기 세포의 주입, group4 sitagliptin 경구 투여 및 중간엽 줄기세포 주입으로 나누어 진행하였다. 레이저 도플러 관류 영상을 통해 혈관 신생을 측정하였으며, 근육 모세관 밀도와 SDF-1, CXCR4, VEGF 같은 혈관 신생 인자의 mRNA 와 단백질 발현을 알아보았다. 하지 허혈 모델에서 Sitagliptin 과 중간엽 줄기 세포 동시 투여 군이 sitagliptin 단독 투여 군 또는 hMSCs 단독 주입 군에 비해 혈관 신생 효과가 있는 것을 확인하였다. 또한 Sitagliptin 과 중간엽 줄기세포 동시 투여 치료법은 하지 허혈 모델에서 VEGF, SDF-1, CXCR4 의 발현이 증가하는 것을 입증하였다.

Conclusions: 하지 허혈에서 Sitagliptin 과 중간엽 줄기 세포의 동시 투여는 sitagliptin 단독 투여와 중간엽 줄기 세포 단독 주입

치료법보다 혈관 신생 반응을 촉진한다. 이는 SDF-1 과발현에 의해  
혈관 신생을 촉진 되는 것을 확인하였다.



---

핵심되는 말: 하지 허혈, sitagliptin, SDF-1/CXCR4, 혈관신생반응