

성대에 발생한 과립세포종 1예

최홍식¹ · 임재열¹ · 유종범¹ · 김지훈¹ · 신은아²

A Case of Granular Cell Tumor of the Vocal Fold

Hong-Shik Choi, MD¹, Jae-Yol Lim, MD¹, Jong Bum Yoo, MD¹,
Ji Hoon Kim, MD¹ and Eun-Ah Shin, MD²

¹Department of Otorhinolaryngology, The Institute of Logopedics & Phoniatics and ²Pathology,
Yonsei University College of Medicine, Seoul, Korea

ABSTRACT

Granular cell tumor is a rare, usually benign neoplasm that can occur in various parts of the body. Half of all granular cell tumors occur in the head and neck, with 33% of these occurring in the tongue. The larynx is relatively an uncommon location, accounting for approximately 7% to 10% of all reported cases. Typically, the most common presenting symptom is hoarseness, with some patients also presenting stridor, hemoptysis, dysphagia, and otalgia. But the tumor may be asymptomatic and discovered only incidentally during a routine examination. The diagnosis is usually made on the histopathological findings, characterized by abundant eosinophilic cytoplasm filled with granules of varying sizes. Complete excision with an attempt to maintain normal structures generally results in cure. We experienced a 16-year-old man with laryngeal granular cell tumor, which involves the right true vocal fold. He was successfully treated with local excision under laryngomicroscopic fine dissection. So we present this case with a review of literature. (Korean J Otolaryngol 2002;45:1196-8)

KEY WORDS : Granular cell tumor · Laryngeal neoplasms.

가

(granular cell tumor) 1926 Abrikos-
soff¹⁾ (granular cell myoblas-
toma)

가 , Abrikoss-
off¹⁾가

가 16 가 4
50%가 4

가 ²⁾³⁾ 가
3~10%

⁴⁾ 가 (Fig. 1).

: 2002 8 21 / : 2002 10 14
: , 146 - 92

: (02) 3497 - 3461 · : (02) 3463 - 4750
E - mail : hschoi@yumc.yonsei.ac.kr

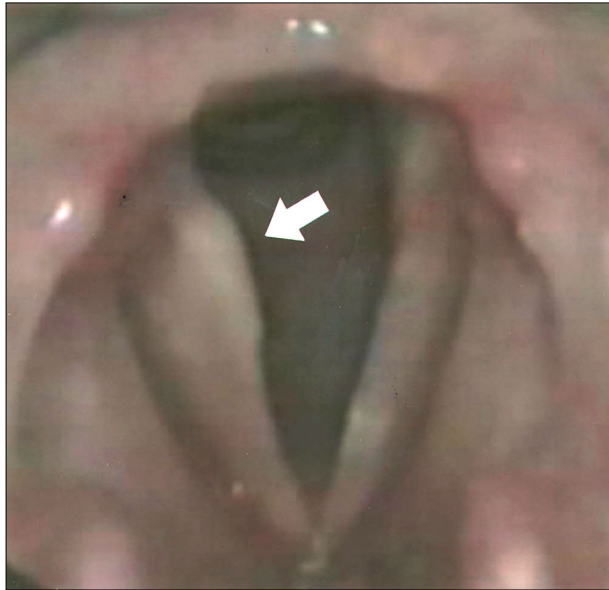


Fig. 1. Appearance of granular cell tumor Direct laryngoscopy exhibited a greyish-yellow nodular mass, involving the posterior third of the right true vocal cord.

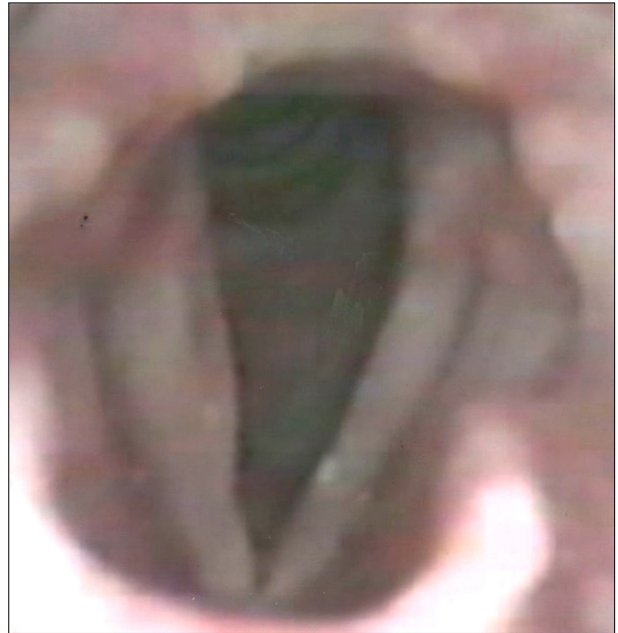


Fig. 3. Laryngoscopic finding after operation The tumor was completely excised, and no evidence of recurrence was found (2 months later after operation).

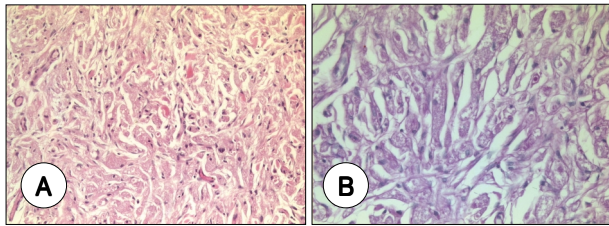


Fig. 2. Histological feature of granular cell tumor A. Sheets of polymorphic cells with abundant, pale staining eosinophilic granular cytoplasm (H & E $\times 200$) B. The cytoplasm shows PAS positive granularity ($\times 400$).

	16.53	21.47	가	, jitter
	12.25%	7.98%		, shimmer
	2.52%	1.5%		13.85
dB	27.45 dB			
	2			
	(Fig. 3)			

() 1 mm
가
가
가
H & E
(Fig. 2A).
PAS
S-100
2B)

1926 Abrikossoff¹⁾가 5
가
가 S-100
가
angulate body 가
Schwann
2
30-50
38)

