

CASE REPORT

DOI 10.4070/kcj.2011.41.2.101

Print ISSN 1738-5520 / On-line ISSN 1738-5555
Copyright © 2011 The Korean Society of Cardiology**Open Access**

Takotsubo-Like Severe Left Ventricular Dysfunction After Cesarean Delivery in a 28-Year Old Woman

Soo-Young Kim, MD, Ji Hyun Yoon, MD and Sang-Hak Lee, MD

Cardiology Division, Department of Internal Medicine, Yonsei University College of Medicine, Seoul, Korea

ABSTRACT

Takotsubo cardiomyopathy typically affects post-menopausal women who experience severe psychological or physical stress. It can also develop after medical procedures or surgery. Although the underlying mechanism has not been clearly elucidated, catecholamine overload is one of the most plausible etiologies. Herein we report a case of takotsubo-like left ventricular (LV) dysfunction in a 28-year old woman who underwent Cesarean delivery. She presented with acute heart failure and pulmonary edema immediately after the delivery. Her echocardiography showed severe LV dysfunction and apical ballooning. This case is clinically and pathophysiologically similar to peripartum cardiomyopathy. (**Korean Circ J 2011;41:101-104**)

KEY WORDS: Postpartum period; Takotsubo cardiomyopathy; Cesarean section; Heart failure.

Introduction

Takotsubo cardiomyopathy, also known as transient left ventricular (LV) apical ballooning syndrome, consists of transient LV dysfunction. It is characterized by regional wall motion abnormalities that extend beyond a single epicardial vascular distribution, chest pain or dyspnea, new electrocardiographic (ECG) abnormalities (ST-segment elevation and/or T-wave inversion), and minor elevations in serum levels of cardiac enzymes in the absence of significant coronary artery disease. In the majority of patients, the apical akinesis completely resolves within a month.^{1,2)} Patients affected by the disease are predominantly postmenopausal women who experience emotional or physical stress and subsequently develop chest pain and dyspnea.³⁻⁵⁾ The pathophysiological mechanism is not completely understood, but it is likely to be associated with catecholamine overload.⁶⁾

Received: May 25, 2010

Revision Received: June 21, 2010

Accepted: July 1, 2010

Correspondence: Sang-Hak Lee, MD, Cardiology Division, Department of Internal Medicine, Yonsei University College of Medicine, 250 Seongsan-ro, Seodaemun-gu, Seoul 120-752, Korea
Tel: 82-2-2228-8461, Fax: 82-2-2227-7732
E-mail: sh11106@yuhs.ac

• The authors have no financial conflicts of interest.

© This is an Open Access article distributed under the terms of the Creative Commons Attribution Non-Commercial License (<http://creativecommons.org/licenses/by-nc/3.0>) which permits unrestricted non-commercial use, distribution, and reproduction in any medium, provided the original work is properly cited.

Herein we report a case of a 28-year-old woman with takotsubo-like severe LV dysfunction associated with Cesarean section. We also discuss plausible mechanisms and the clinical importance of our case.

Case

On May 19th 2009, a 28-year-old woman was admitted to the emergency department after a Cesarean delivery at a local obstetric clinic. It was reported that her oxygen saturation was 93% immediately after delivery but could not be maintained at this level. General anesthesia has been induced using vecuronium bromide, diprivan, and succinylcholine and maintained with sevoflurane. There were no other complications such as major bleeding or shock during surgery and she was in- and extubated uneventfully.

The patient had unremarkable past medical and obstetrical histories. She had no allergies and no family history of heart disease. It was her first-ever episode of dyspnea. She was complaining of dizziness. At the time of admission, she was fully conscious, but was in respiratory distress. Her blood pressure was 142/82 mmHg, heart rate was 138 bpm, body temperature was 36.8°C, respiratory rate was 17/minutes. Mild rale on both lower lung field was detected by auscultation. A chest radiograph showed pulmonary edema (Fig. 1). The twelve-lead ECG performed on admission revealed ST segment elevation at lead III and T-wave inversion at leads I and aVL (Fig. 2). Laboratory studies upon admission were: white blood

cells 14,290 cells/ μ L, hemoglobin 14.0 g/dL, hematocrit 40.6%, and platelets 275,000 cells/ μ L. Arterial blood gas analysis values were: pH 7.42, $p\text{CO}_2$ 29 mmHg, $p\text{O}_2$ 69 mmHg, bicarbonate 19 mmol/L and O_2 saturation 94% with 7 L/minute of nasal oxygen supply. A baseline cardiac enzyme study showed troponin-T and creatine kinase-MB isoform (CK-MB) to be 0.50 ng/mL and 18.2 ng/mL, respectively, but repeated measurements 9 hours later showed decreased levels: 0.23 ng/mL and 10.7 ng/mL, respectively. There was a further decrease of CK-MB on day 3 (6.6 ng/mL). Echocardiographic evaluation on hospital day 1 revealed markedly reduced global LV systolic function with an ejection fraction of 23% and impairment of the midventricular and apical contractility sparing the base (Fig. 3A and B).

After admission, she was treated with furosemide, spironolactone, and captopril. Her symptoms gradually improved during the hospital stay. An echocardiography taken 5 days later showed improved hypokinesia of the midventricular region. The patient was discharged on hospital day 8 in stable con-

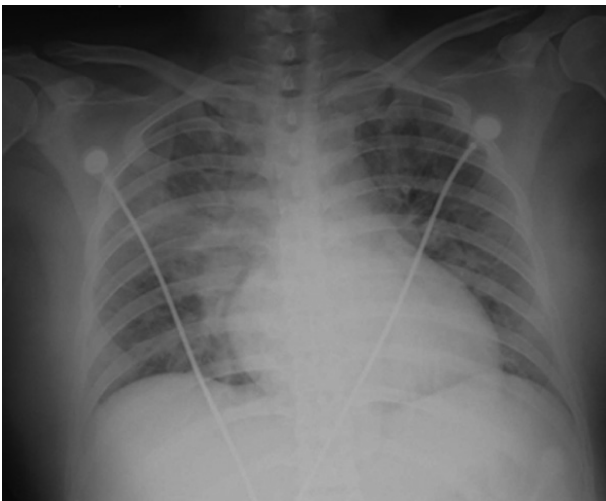


Fig. 1. Chest X-ray on admission showed bilateral pulmonary edema.

dition. A follow-up echocardiography at the outpatient clinic 2 weeks after her baseline examination revealed nearly normalized cardiac function (Fig. 3C and D).

Discussion

We report a case of a 28-year old woman with transient severe LV dysfunction after Cesarean delivery. Considering the characteristics of her clinical presentation and the period in which it developed, peripartum cardiomyopathy was at first part of the differential diagnosis. Peripartum cardiomyopathy is a disease occurring during pregnancy or during the postpartum period. The criteria for the diagnosis are: development of heart failure in the last month of pregnancy or within the first 5 postpartum months, absence of a determinable etiology for the cardiac failure, and absence of demonstrable heart disease prior to the last month of pregnancy. In most cases, the onset is in the first 3 months of the postpartum period.⁷⁾

Our case is very similar to peripartum cardiomyopathy. However, the most probable diagnosis of this patient was takotsubo cardiomyopathy, which was mainly based on the characteristic echocardiographic findings. Indeed, the second and third diagnostic criteria for peripartum cardiomyopathy also apply to takotsubo cardiomyopathy. However, because coronary angiography was not performed, this case cannot meet the complete diagnostic criteria of takotsubo cardiomyopathy.

There are an increasing number of reports on takotsubo cardiomyopathy in the setting of a medical procedure such as spinal anesthesia, general anesthesia, and surgery. Although takotsubo cardiomyopathy is common in elderly women, young patients can also be affected in these iatrogenic conditions.⁸⁻¹⁰⁾ In this regard, pregnant women who are undergoing Cesarean delivery can be a vulnerable population. Therefore, physicians involved in Cesarean deliveries need to be prepared to suspect, diagnose, and manage this unexpected event.

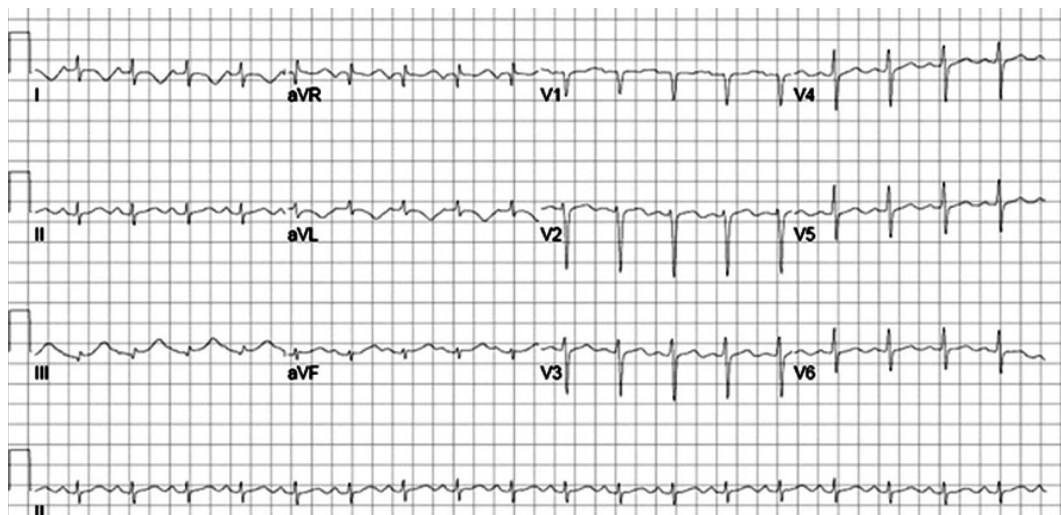


Fig. 2. Twelve-lead electrocardiogram on admission showed sinus tachycardia and ST-T-wave change.

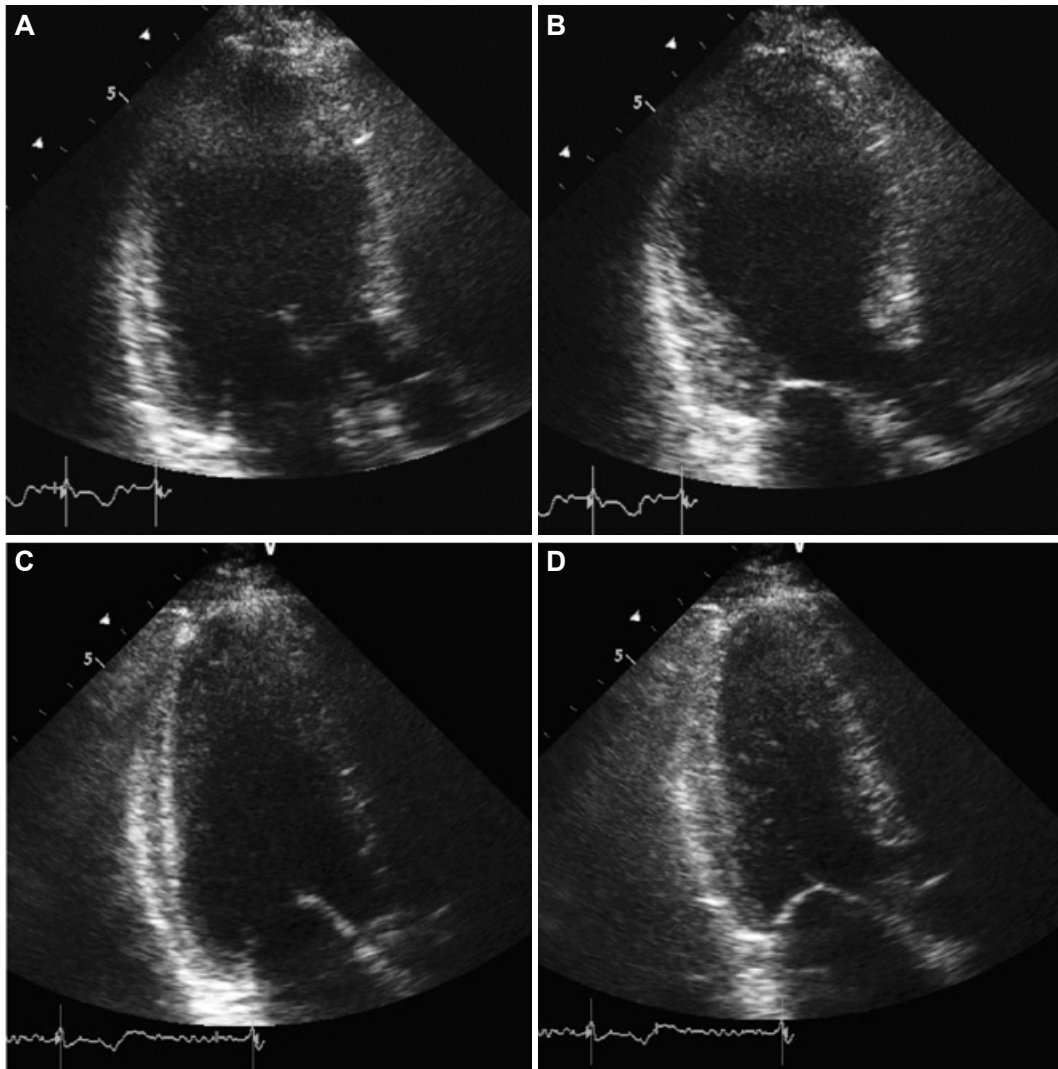


Fig. 3. Baseline echocardiography recorded at the end of diastole (A) and systole (B). It revealed severely reduced global left ventricular systolic ejection with preserved base function. A follow-up echocardiography at the end of diastole (C) and systole (D) performed at the outpatient clinic 2 weeks later showed nearly normalized cardiac function.

Transient LV dysfunction has been reported to arise at the time of induction and intubation during general anesthesia. However, the relationship between a specific anesthetic and takotsubo cardiomyopathy has been unclear. In the described case, the patient's symptoms appeared after successful in- and extubation. In our patient, the circumstances under which the symptoms started during the surgery made the Cesarean section an iatrogenic stress and a possible responsible factor. Alternatively, the emotional and physical stress of the delivery could have induced the disease. If we have conducted tests for myocardial inflammation associated with infection or autoimmunity, it could have been helpful to completely rule out other causes and finally diagnose takotsubo cardiomyopathy.

In conclusion, our patient had takotsubo-like severe LV dysfunction that occurred in the postpartum period. It is difficult at times to distinguish takotsubo-like severe LV dysfunction from peripartum cardiomyopathy. A common pathophysiological mechanism may underlie these two diseases.

REFERENCES

- 1) Kawai S, Kitabatake A, Tomoike H. *Guidelines for diagnosis of takotsubo (ampulla) cardiomyopathy*. *Circ J* 2007;71:990-2.
- 2) Prasad A, Lerman A, Rihal CS. *Apical ballooning syndrome (Tako-Tsubo or stress cardiomyopathy): a mimic of acute myocardial infarction*. *Am Heart J* 2008;155:408-17.
- 3) Sharkey SW, Lesser JR, Zenovich AG, et al. *Acute and reversible cardiomyopathy provoked by stress in women from the United States*. *Circulation* 2005;111:472-9.
- 4) Tsuchihashi K, Ueshima K, Uchida T, et al. *Transient left ventricular apical ballooning without coronary artery stenosis: a novel heart syndrome mimicking acute myocardial infarction. Angina Pectoris-Myocardial Infarction Investigations in Japan*. *J Am Coll Cardiol* 2001; 38:11-8.
- 5) Lee HH, Gwon HC, Kim BJ, et al. *Clinical manifestation of novel stress-induced cardiomyopathy mimicking acute myocardial infarction: single center prospective registry*. *Korean Circ J* 2002;32:1054-63.
- 6) Wittstein IS, Thiemann DR, Lima JA, et al. *Neurohumoral features of myocardial stunning due to sudden emotional stress*. *N Engl J Med* 2005;352:539-48.
- 7) Demakis JG, Rahimtoola SH. *Peripartum cardiomyopathy*. *Circulation* 1971;44:964-8.
- 8) Crimi E, Baggish A, Leffert L, Pian-Smith M, Januzzi J, Jian Y. *Acute*

104 Takotsubo-Like LV Dysfunction in Postpartum

reversible stress-induced cardiomyopathy with cesarean delivery under spinal anesthesia. Circulation 2008;117:3052-3.

9) Jabaudon M, Bonnin M, Bolandard F, Chanseume S, Dauphin C, Bazin JE. *Takotsubo syndrome during induction of general anesthesia. An-*

aesthesia 2007;62:519-23.

10) Littlejohn FC, Syed O, Ornstein E, Connolly ES, Heyer EJ. *Takotsubo cardiomyopathy associated with anesthesia: three case reports. Cases J 2008;1:227.*