



# PHS PUBLIC ACCESS

Author manuscript

*Oncogene*. Author manuscript; available in PMC 2019 April 30.

Published in final edited form as:

*Oncogene*. 2019 March ; 38(10): 1764–1777. doi:10.1038/s41388-018-0553-0.

## The Role of GLI-Sox2 signaling axis for gemcitabine resistance in pancreatic cancer

Yanfei Jia<sup>#1,2</sup>, Dongsheng Gu<sup>#2</sup>, Jun Wan<sup>3</sup>, Beiqin Yu<sup>2,4</sup>, Xiaoli Zhang<sup>2</sup>, E. Gabriela Chiorean<sup>5</sup>, Yunshan Wang<sup>1,\*</sup>, and Jingwu Xie<sup>2,\*</sup>

<sup>1</sup>Central Laboratory, Jinan Central Hospital Affiliated to Shandong University, Jinan, China

<sup>2</sup>Wells Center for Pediatric Research, Division of Hematology and Oncology, Department of Pediatrics, Indiana University Simon Cancer Center, Indiana University, Indianapolis, IN 46202

<sup>3</sup>Department of Molecular and Medical Genetics, Indiana University Simon Cancer Center, Indiana University, Indianapolis, IN 46202

<sup>4</sup>Shanghai Key Laboratory of Gastric Neoplasms, Shanghai Institute of Digestive Surgery, Ruijin Hospital, Shanghai Jiao Tong University School of Medicine, Shanghai 200025, China

<sup>5</sup>Division of Medical Oncology, University of Washington, and Fred Hutchinson Cancer Research Center, Seattle WA

# These authors contributed equally to this work.

### Abstract

Pancreatic cancer, mostly pancreatic ductal adenocarcinomas (PDAC), is one of the most lethal cancers, with a dismal median survival around 8 months. PDAC is notoriously resistant to chemotherapy. Thus far, numerous attempts using novel targeted therapies and immunotherapies yielded limited clinical benefits for pancreatic cancer patients. Delineating the molecular mechanisms underlying drug resistance in pancreatic cancer may provide novel therapeutic options. Using acquired gemcitabine resistant pancreatic cell lines, we revealed an important role of the GLI-Sox2 signaling axis for regulation of gemcitabine sensitivity *in vitro* and in animal models. Down-regulation of GLI transcriptional factors (GLI1 or GLI2), but not SMO signaling inhibition, reduces tumor sphere formation, a characteristics of tumor initiating cell (TIC). Down-regulation of GLI transcription factors also decreased expression of TIC marker CD24. Similarly, high Sox2 expression is associated with gemcitabine resistance whereas down-regulation of Sox2

Users may view, print, copy, and download text and data-mine the content in such documents, for the purposes of academic research, subject always to the full Conditions of use:[http://www.nature.com/authors/editorial\\_policies/license.html#terms](http://www.nature.com/authors/editorial_policies/license.html#terms)

\*Corresponding Author Contact Information: Jingwu Xie, Wells Center for Pediatric Research and IU Simon Cancer Center, 1044 West Walnut Street, Room R4-327, Indianapolis, IN 46202, Phone: +1-317-278-3999, Fax: +1-317-274-8679, jinxie@iu.edu; Yunshan Wang, Central Laboratory, Jinan Central Hospital affiliated to Shandong University, Jinan, China. w\_yunshan@126.com.

Authors' Contributions:

Conceptualization and Design: Jingwu Xie, Yunshan Wang

Resources: Jingwu Xie, Yunshan Wang

Methodology: Yanfei Jia, Dongsheng Gu, Beiqin Yu, Xiaoli zhang

Data Analysis & Interpretation: Jun Wan, E. Gabriela Chiorean, Jingwu Xie

Writing, review, and/or revision of the manuscript: Yanfei Jia, Dongsheng Gu, Jingwu Xie

Supervision: Jingwu Xie

**Disclosure of Potential Conflict of Interest:** The authors declare no potential conflict of interest.

sensitizes pancreatic cancer cells to gemcitabine treatment. We further revealed that elevated Sox2 expression is associated with an increase in GLI1 or GLI2 expression. Our CHIP assay revealed that GLI proteins are associated with a putative Gli binding site within the Sox2 promoter, suggesting a more direct regulation of Sox2 by GLI transcription factors. The relevance of our findings to human disease was revealed in human cancer specimens. We found that high Sox2 protein expression is associated with frequent tumor relapse and poor survival in stage II PDAC patients (all of them underwent gemcitabine treatment), indicating that reduced Sox2 expression or down-regulation of Gli transcription factors may be effective in sensitizing pancreatic cancer cells to gemcitabine treatment.

### Keywords

GLI; hedgehog; gemcitabine; pancreatic cancer; drug resistance

---

## INTRODUCTION

The overall survival of cancer patients has significantly improved in the last decade due to the use of multidisciplinary care, improved chemotherapeutic agents, development of novel targeted biologic agents in combination of cancer genomic profiles and improved palliative care services (1). In contrast, the overall survival of pancreatic cancer patients, particularly patients with pancreatic ductal adenocarcinomas (PDAC, has not changed very much in the last 40 years (1–4). Upon diagnosis, PDAC patients have a dismal median survival around 8 months and ~8% five-year survival rate. Pancreatic cancer is predicted to be number two cancer killer by 2030 (4). The notorious resistance of pancreatic cancer to the traditional cytotoxic chemotherapeutic agents and targeted therapy poses major challenge in reducing the death toll from this deadly disease.

Gemcitabine has been the first line therapeutic agent for patients with advanced pancreatic cancer since 1997(3). Despite initial responsiveness to gemcitabine, pancreatic cancer eventually develop resistance, and patients succumb to the disease. Gemcitabine is a deoxycytidine analogue with specific spectrum of activity and several unique properties. Gemcitabine is known to kill cells with active DNA synthesis by blocking the G1/S transition. Combining albumin-bound paclitaxel with gemcitabine has shown clear therapeutic advantage than gemcitabine alone (8.5 versus 6.7 months in median survival) (5). The exact molecular mechanisms underlying gemcitabine resistance in pancreatic cancer is not completely understood. Previous study indicates that stromal hedgehog signaling may be responsible for lack of gemcitabine penetration to the tumor in the mouse model. It was thus predicted that inhibition of hedgehog signaling may be effective in promoting gemcitabine efficacy (6). However, clinical trials combining gemcitabine and hedgehog inhibitor IPI-262 did not benefit the pancreatic cancer patients, and we believe our study explains why the clinical trials failed. Gemcitabine resistance can be either intrinsic or acquired. It has been hoped that strategies to overcome gemcitabine resistance may be effective in prolonging the lifespan of pancreatic cancer patients.

In this study, we analyzed gemcitabine resistant cell lines by comparison with their matched sensitive counterparts. We discovered up-regulation of the Gli-Sox2 signaling axis in the resistant cells, which is consistent with published data that support the role of cancer stem cells is drug resistance (7–9). We have performed a number of experiments to prove the significance of this signaling axis for gemcitabine resistance both in cultured cells and in animal models. We have detected regulation of Sox2 by Gli transcriptional factors in pancreatic cancer cells. The relevance of our data to pancreatic cancer was reflected by the significant association between a high Sox2 protein level with an increased risk of tumor relapse and a poor survival of pancreatic cancer patients who underwent gemcitabine-based chemotherapy.

## RESULTS

### Molecular characterization of gemcitabine resistant pancreatic cancer cells

To understand the molecular basis of gemcitabine resistance, we first characterized two gemcitabine resistant cell lines established from their corresponding parental cell lines Colo357 and BxPC3 following multiple treatments with gemcitabine. The IC<sub>50</sub> for gemcitabine in the resistant Colo357 cells (named as Colo357-GR) is 3710nM whereas that of the parental cells is only 58.16nM. The calculated resistant index (RI) (10–12) is ~63.8 (=3710/58.16), indicating a significant gemcitabine resistance in Colo357-GR. Similarly, the IC<sub>50</sub> for resistant BxPC3 cells (named as BxPC3-GR) is 3273nM whereas that for the parental cells is 40.15nM. The RI for BxPC3-GR is also very high (81.5=3273/40.15) (Fig. 1A).

We further tested the response of Colo357-GR-derived tumors to gemcitabine treatment in the immune deficient NSG mice following pancreatic injection. Our results showed that gemcitabine (25mg/kg via tail vein) had no effects on tumors from Colo357-GR cells but significantly reduced the tumors derived from the parental Colo357 cells (Fig.1B). We also performed subcutaneous injection of Colo357-GR and the parental Colo357 cells, and performed gemcitabine treatment after tumors were formed. We found that the tumors derived Colo357 continued to grow, the tumors derived from the parental Colo357 cells shrunk after gemcitabine treatment (Fig.1C). The data from both orthotopic and subcutaneous models gave essentially the same result: tumors derived from Colo357-GR cells are indeed gemcitabine resistant in mice. Similarly, we found that tumors from gemcitabine resistant BxPC3-GR cells are not sensitive to gemcitabine in comparison with their parent cells (as BxPC3-GS) (Fig.S1). These data confirm that the tumors derived from these gemcitabine resistant cells do not respond well to gemcitabine treatment.

Previous studies indicate that residual cancer cells or the putative tumor initiating cells (TICs) may be responsible for chemo-resistance (13). Putative TICs are characterized as cells forming tumor sphere efficiently, and are regulated by several signaling pathways involved in embryonic development, such as wnt, hedgehog and notch signaling (14–16). We compared tumor sphere formation between the resistant Colo357-GR and their matched parental cells, and found that Colo357-GR cells formed large and round spheres whereas the parental cells barely formed any spheres (Fig.2A left). This phenomenon is not cell line-specific because BxPC-GR cells also formed larger tumor spheres in comparison with the

parental BxPC3 cells (Fig.2A right). This observation suggests the presence of more TICs in the resistant cells.

Next, we compared gene expression in pathways responsible for maintenance of residual cancer cells or tumor initiating cells. Hedgehog, Wnt and Notch signaling pathways play important roles in embryonic development, and are critical for maintenance of putative TICs (14–16). As shown in Fig. 2B and Fig.2C, we found that GLI molecules (*GLI1* or *GLI2*) were significantly up-regulated in the gemcitabine resistant cells. Tumors formed from Colo357-GR had higher GLI2 expression than those derived from Colo357 parental cells (see Fig. S2), which is consistent with gene expression in cell lines (Fig.2B). We confirmed high Gli2 protein expression in the gemcitabine resistant Colo357-GR cells (Fig.2B right). With specific antibodies to GLI1, we confirmed GLI1 protein expression in BxPC3 and BxPC3-GR cells (Fig.2C right). In the two pairs of cell lines, we did not detect Gli1 isoforms GLI1 N and tGLI1 (17,18), suggesting that elevated Gli1 expression was mainly from the full-length GLI1.

In our previous studies, we have shown that hedgehog signaling activation is one of the major underlying mechanisms for chemotherapy resistance in gastric and colorectal cancers (19,20), indicating that Hh signaling may be responsible for gemcitabine resistance in pancreatic cancer. In contrast, we did not observe significant gene expression changes in *DKK1*, *JAG2* or *CTGF*, molecules involved in Wnt, Notch and Hippo/YAP signaling (see Figure S3).

To determine whether our data from two independent cell lines are also present in other pancreatic cancer cells, we searched published gene expression data on gemcitabine resistant cell lines from GEO database. The dataset GSE35141 showed high expression of hedgehog signaling molecules or target genes in gemcitabine resistant cells. For examples, Gli1 and Gli2 were activated by 3.0-fold ( $p = 6.5E-3$ ) and 2.7-fold ( $p = 1.4E-2$ ), respectively, in resistant PK-1 cells compared to the parental ones. Gli2 was also expressed at 23-fold ( $p = 1.4E-5$ ) in resistant PK-9 cell line. Thus, it appears that up-regulated hedgehog signaling is a signature for gemcitabine resistance in several pancreatic cancer cell lines.

To further characterize the residual cancer cells or tumor initiating cells, we examined cell surface markers in these cells. Expression of CD24, CD44 and ESA are enriched in pancreatic cancer stem cells (21). In BxPC3, Colo357 as well as the derived gemcitabine resistant cell lines, CD44 and ESA are highly expressed. We did find more CD24 positive cells in the gemcitabine resistant cells (Colo357-GR >68%; Colo357 20%; BxPC3-GR ~16%; BxPC3 ~0.3%,  $P = 0.0061$ ) (Fig.2D), suggesting that gemcitabine resistant cell lines have a high percentage of putative TICs. We also examined expression of several signaling molecules whose expression has been associated with chemo-resistance in other cancer types, such as ABCG2, c-FLIP, BCL2(22–24). However, we did not observe significant changes in these genes (see Figure S4).

The above characterization of two pairs of cell lines allows us to investigate the underlying mechanisms for gemcitabine resistance in pancreatic cancer cells.

## Regulation of the putative TIC population and gemcitabine resistance in pancreatic cancer cells

To directly test the significance of hedgehog signaling for putative TIC maintenance, we detected the putative TIC population in pancreatic cancer cells using two approaches.

First, we measured tumor sphere formation efficiency in Colo357-GR cells with *GLI2* shRNAs (as Colo357-GR-shGli2) or Colo357-GR cells with a scrambled shRNA (as Colo357-GR-shNC). Tumor sphere formation efficiency is a known biological readout of TICs (25). We found that *GLI2* knockdown significantly reduced the size of tumor spheres (Fig.2A left). In BxPC3-GR cell line in which *GLI1* is up-regulated, knockdown of *GLI1* reduced the size of tumor spheres (Fig.2A right). These results indicate that *GLI* transcription factors are required for tumor sphere formation in the gemcitabine resistant cells.

Second, we detected cell surface marker expression following alteration of *GLI2* level in Colo357-GR. We found that *GLI2* knockdown significantly reduced expression of CD24 (Fig.2E). Similar results were also observed in BxPC3-GR cells (Fig.2E). These data indicate that reduced Hh signaling decreases expression of putative TIC surface marker CD24. We also examined ALDH<sup>+</sup> cells and side population, but did not find any difference between the gemcitabine resistant cells and the parental cells (data not shown).

From the above data, we conclude that Hh signaling activation is important for maintenance of the putative TIC population as indicated by tumor sphere formation and expression of putative TIC surface marker CD24.

Furthermore, we determined whether knockdown *GLI1* or *GLI2* affect gemcitabine sensitivity in the resistant cells. When *GLI2* shRNAs were expressed in Colo357-GR, we found a significant decrease in gemcitabine IC<sub>50</sub> (Fig.3A). Similarly, when *GLI1* shRNAs were expressed in BxPC3-GR, the IC<sub>50</sub> was also significantly reduced (Fig.3B).

The specificity of *GLI1* and *GLI2* shRNAs was tested by ectopic expression of *GLI1* in *GLI1*-shRNAs-expressing BxPC3 cells (or ectopic expression of *GLI2* in Colo357-GR-shGli2 cells). We found that ectopic expression of *GLI1* reversed the phenotype of *GLI1* shRNAs in BxPC3-GR cells and became more resistant (Fig.3C left), and the similar results were also obtained using ectopic *Gli2* expression in Colo357-GR cells (Fig.3C left). These results indicate the specificity of *GLI1* and *GLI2* shRNAs, and further confirmed that elevated expression of *GLI* transcription factors is sufficient to drive gemcitabine resistance.

We noticed elevated expression of *Shh* and *Ihh* in the resistant cells, and thought that elevated expression of *GLI1* or *GLI2* in the resistant cells may be through hedgehog ligand-mediated signaling. In that case, Smoothed antagonist BMS833923 (26) should be sufficient to reduce IC<sub>50</sub> for gemcitabine. However, our data showed that BMS833923 only reduced gemcitabine IC<sub>50</sub> by less than 50% (Fig. 3A, 3B). Furthermore, BMS833923 was not as effective as *GLI* specific shRNAs in reducing expression of *GLI1* (in BxPC3-GR cells) or *GLI2* (in Colo357-GR cells). These data indicate that ligand-independent (non-canonical) hedgehog signaling plays a more important role in gemcitabine resistance. This

result is consistent with the failed clinical trials using Smoothened antagonists (27–29). Currently, the exact mechanisms responsible for this non-canonical Hh signaling activation are under investigation.

To assess whether tumors formed from these cells respond to gemcitabine as expected, we treated tumor-bearing mice with gemcitabine. After tumors develop to certain size following injection of different cancer cells (Colo357-GS; Colo357-GR; Colo357-GR-shNC; Colo357-GR-Gli2-shRNAs), we treated mice with gemcitabine (25mg/kg, twice weekly). Although Colo357-GS cells formed relative large tumors, the tumors shrank rapidly after gemcitabine treatment. In contrast, Colo357-GR-formed tumors did not respond to gemcitabine treatment as we had expected (Fig.4A). When Gli2shRNAs were expressed in Col357-GR cells, GLI2 expression was significantly reduced (Fig.4B), and tumors became sensitive to gemcitabine (Fig.4A). In contrast, the shRNA control- (Colo357-GR-shNC) formed tumors were not responsive to gemcitabine treatment (Fig.4A). We have performed two types of studies in immune deficient NSG mice: orthotopic mouse model following pancreatic injection of luciferase-expressing cells (26) or subcutaneous injection of cells (Fig.4C). Our data from both models indicate that Gli transcription factors are essential factors in mediating gemcitabine resistance in pancreatic cancer.

Similarly, we found that while tumors derived from BxPC3-GR is less sensitive to gemcitabine (Fig.S1), GLI1 gene knockdown using specific shRNAs sensitized tumors (for the tumors derived from BxPC-GR-shGLI1) to gemcitabine treatment (Figure S5).

Taken together, we found that elevated GLI1 and GLI2, but not the ligands Shh and Ihh, is required for the acquired gemcitabine resistance in pancreatic cancer both in cultured cells and in mice. We believe that hedgehog signaling exerts its functions through regulation of the putative TICs.

### Regulation of SOX2 by hedgehog signaling in gemcitabine resistant cells

A number of transcription factors have been reported to regulate putative TICs, and we assessed expression of these factors (30–37) in the resistant cells, and found that expression of *Sox2* was highly elevated (Fig. 5A). A significant increase in Sox2 protein level was also observed (Fig.5B) in the resistant cells.

It is known that sex-determining region Y-box 2 (*Sox2*) is of vital importance in regulation of stem cells in embryos and in cancer (38). In the tumors derived from Colo357-GR, we found a higher level of Sox2 in comparison to the parental COLO357 cells (see Fig.5C). The relevance of Sox2 expression to human pancreatic cancer specimens was investigated using a tissue array assembled with surgically removed specimens from stage II pancreatic cancer patients enrolled in our medical center. All the patients had stage II PDAC tumors and underwent chemotherapy with gemcitabine as the first line treatment. This tissue array is suitable for protein detection by immunohistochemistry. We examined Sox2 protein expression by immunohistochemistry (Fig.5D), and found that some tumors with higher Sox2 protein expression while others express a low level of Sox2. Since all patients had used gemcitabine following surgery, tumor relapse following gemcitabine treatment may result in a short survival of patients. We performed Kaplan-Meier analysis for these patients, and

found that patients with a high Sox2 protein expression had poor survival ( $P < 0.05$ ) (Fig.5E). These results suggest that a high protein expression of Sox2 indicates poor prognosis of gemcitabine treatment and patient survival.

To determine the functional relevance of Sox2 expression with gemcitabine sensitivity in pancreatic cancer cells, we knocked down Sox2 expression by two independent shRNA constructs in the gemcitabine resistant cell lines and treated with gemcitabine afterwards. As indicated in Fig.6A and 6B, down-regulation of Sox2 significantly reduced the IC50 of gemcitabine in the resistant cancer cells. For example, Colo357-GR cells with Sox2 shRNA expression has an IC50 of gemcitabine  $< 1000\text{nM}$  in comparison with the IC50 of Colo357-GR with control shRNA above  $3000\text{nM}$ . Similarly, Sox2-shRNAs reduced the IC50 of BxPC3-GR from over  $3000\text{nM}$  to less than  $2000\text{nM}$  (Fig.6A/6B). Sox2 shRNAs also reduced the level of CD24 positivity in the resistant cells (Fig.6C), just like Gli2 shRNAs in Colo357 cells (Fig.2E). These results indicate that Sox2 is at least partly responsible for gemcitabine sensitivity.

Next, we investigated how Sox2 expression was induced in the resistant pancreatic cancer cells. We have evidence to indicate that the level of Gli1/2 is correlated to Sox2 expression. First, knockdown of GLI2 (Fig.7A) or GLI1 (Fig.7B) was associated with reduced expression of Sox2. Second, re-expression of GLI1 or GLI2 induced Sox2 expression (Fig.7C). In the mouse model, tumors formed from Colo357-GR, in which GLI2 is highly expressed, had more Sox2 expression in comparison with the tumors from the parental Colo357 cells (Fig.7D). Thus, it appears that the level of Sox2 expression is controlled by GLI1/2 expression.

To further determine whether Sox2 expression is transcriptionally regulated by Gli molecules, we analyzed the promoter sequence of human Sox2, and discovered a Gli-consensus binding site (Fig.8A). We performed CHIP assays in Colo357-GR and in BxPC3-GR cells following ectopic expression of GLI2 and GLI1 respectively. The genomic DNAs associated with GLI2 and GLI1 proteins were immunoprecipitated using specific tag antibodies, and the corresponding GLI binding DNA fragment was detected by PCR amplification with the flanking primers. We found that antibodies against ectopically expressed GLI1 and GLI2 proteins, but not the control IgG, were able to immunoprecipitate the DNA fragment containing the consensus GLI binding sequence (Fig.8A/B). In contrast, an un-related DNA fragment was not detected in this assay (Fig.8B). These results indicate that elevated Sox2 expression in the resistant cells may be transcriptionally regulated by GLI molecules.

Taken all the data together, we found that acquired gemcitabine resistance in pancreatic cancer cells have elevated expression of GLI transcription factors, either GLI1 or GLI2, which is associated with elevated Sox2 expression. We discovered that knockdown of GLI molecules (GLI1 in BxPC3-GR, or GLI2 in Colo357-GR) or Sox2 sensitizes these cells to gemcitabine treatment. We have evidence to indicate that Sox2 expression is regulated by Gli molecules, possibly through transcriptional regulation. The relevance of our findings to human cancer is reflected by the fact that high level of Sox2 protein expression is associated with a poor patient survival in a cohort of stage II pancreatic cancer patients following

gemcitabine treatment. Thus, the disruption of the Gli-Sox2 signaling axis may be effective in sensitizing pancreatic cancer to gemcitabine-based therapy.

## DISCUSSION

Our findings reveal an important mechanism underlying drug resistance in pancreatic cancer, one of the deadliest cancer types. We showed that the Gli-Sox2 signaling axis is elevated in pancreatic cancer cells with acquired gemcitabine resistance. Down-regulation of Gli1, Gli2 or Sox2 sensitized pancreatic cancer cells to gemcitabine treatment. We have evidence to support that Sox2 expression is regulated by Gli molecules, possibly through transcriptional regulation. The relevance of our studies was confirmed in pancreatic cancer specimens. We showed that high level of Sox2 expression is associated with poor patient survival in stage II disease following gemcitabine treatment. Thus, it is anticipated that strategies at disrupting the Gli-Sox2 signaling axis may be effective in sensitizing pancreatic cancer cells to gemcitabine-based therapy, the first line treatment for pancreatic cancer patients.

A previous report has shown activated hedgehog signaling involved in gemcitabine penetration. It was demonstrated that administration of smoothed antagonist IPI-926 and gemcitabine can significantly reduce metastases of pancreatic cancer in KPC mouse model (6). The major mechanism for this effect is the fact that hedgehog signaling inhibition increases stromal penetration of gemcitabine. In comparison, our studies reveal a different mechanism by which acquired gemcitabine resistance may be contributed to the cancer intrinsic hedgehog signaling through elevated expression of GLI molecules, possibly through non-canonical regulation of GLI molecules. This theory is backed by our finding that inhibition of smoothed signaling is not sufficient to sensitize cancer cells to gemcitabine treatment in these pancreatic cancer cells (Fig.3).

Our study is significant in a few aspects. First, our study indicates that the Gli-Sox2 signaling is both a biomarker for gemcitabine resistance and a target for future pancreatic cancer therapy. Second, strategies to suppress GLI functions may be effective in pancreatic cancer patients with relapsed disease following gemcitabine treatment. Our data also indicate that while expression of hedgehog ligands is elevated in the drug resistant cells, inhibition of ligand-dependent hedgehog signaling using smoothed antagonist BMS833923 was not effective in sensitizing pancreatic cancer cells to gemcitabine treatment. Although two smoothed antagonists are now approved by FDA for cancer treatment, they were not effective in improving gemcitabine-based treatment, as reported in several clinical trials (27,28,39–41). Currently, there are no specific Gli inhibitors approved by FDA to suppress Gli activities. Several compounds have shown activities in reducing GLI signaling, including GANT61(42) and Arsenic trioxide (ATO) (43). ATO has been approved by FDA for treatment of acute promyelocytic leukemia (44–46). Further studies are needed to test whether GLI1/2 inhibitors, including GANT61, are effective in reducing drug resistance in pancreatic cancer.

Furthermore, up-regulation of Sox2 is commonly observed in other resistant cancer cells (47–49). Resistance to chemotherapy and targeted therapies is a major issue both in the clinical care of cancer patients and in cancer research. For example, Sox2 is known to be



responsible for resistance to anti-androgen based therapy in prostate cancer (49). It remains unclear whether Sox2 expression is regulated by GLI transcription factors under these conditions. Based on these results, agents specifically targeting Sox2 may be effective in cancer therapy.

In our tissue array analysis, we discovered an association between high Sox2 protein level with poor patient survival. Thus, it appears that patients with high Sox2 protein expression in the tumor may not be suitable for gemcitabine treatment. This result should be confirmed by expression of GLI1/2 molecules. However, there are no suitable GLI1/2 antibodies for immunohistochemistry, and these analyses cannot be performed in tissue arrays. Instead, we used CTGA data to determine whether high expression of Sox2 and GLI molecules is associated with more cancer relapse following gemcitabine treatment. Through cBioportal (<http://www.cbioportal.org/>) analysis of 186 TCGA pancreatic cancer specimens, we found that patients with high expression of GLI2 and Sox2 in the tumor had ~70% chance of cancer relapse following gemcitabine treatment. In contrast, patients with low expression of Gli2 and Sox2 in the tumor had <60% of chance of cancer relapse. These results are consistent with our hypothesis that activation of the Gli-Sox2 signaling axis is an important factor for gemcitabine resistance in pancreatic cancer.

## MATERIALS AND METHODS

### Chemicals, Antibodies and Reagents

Gemcitabine were purchased from Besse Medical (West Chester, OH). BMS833923 is a potent inhibitor for smoothed signaling (EC<sub>50</sub>= 50 nmol/L) (26). BMS833923 was provided by Bristol–Myers Squibb (50–52). Antibodies to GLI1 (Cat#2534, Cell Signaling Technology, Danvers, MA, USA) and SOX2 (Cat# 97959, Abcam, Cambridge, UK) were purchased commercially; Gli2 antibodies were provided by Dr. CC Hui (53). Other antibodies include Myc-Tag (Cat# 9B11, Cell Signaling Technology, Danvers, MA, USA); Flag-Tag (Sigma, St. Luis, MO, USA); CD24 (clone ML5), histone H3 and IgG (BioLegend, San Diego, CA, USA).

### Cell lines

Colo357 and BxPC3 cells were obtained from the American Type Culture Collection (ATCC), and maintained according to the vendor's instruction. In order to generate cell lines resistant to gemcitabine, Colo357 and BxPC3 cells were exposed to increasing concentrations of gemcitabine. Finally, Colo357-GR (gemcitabine resistance) and BxPC3-GR were maintained in the presence of 500 nM gemcitabine. All cell lines have been tested for their authenticity.

### Cell Viability Assay

Alamar Blue assay was used to determine cell viability (54–56). 2000–4000 cells were seeded in each well of 96-well plates. Different amounts of gemcitabine were added or left untreated for specified amount of time. For cell viability, we added Alamar Blue (10 ul/well) for 2 h at 37 °C. Viable cells with active mitochondrial enzyme activity will generate fluorescence from Alamar Blue, which can be measured by a plate reader (BioTek)

(excitation 530 nm; emission 590 nm). IC50 values were generated from fluorescent reading using GraphPad Prism.

### RNA extraction, RT-PCR, and Real-time PCR

We extracted total RNAs from cultured cells or tumorous tissues using Tri-RNA extraction reagent (Sigma, St. Luis, MO, USA), and performed real-time quantitative PCR analyses according to a previously published procedure (57). For each sample, we used triplicates and used the comparative  $C_T$  ( $C_T$ ) as described by the manufacturer (Applied Biosystems/Fisher Scientific). The relative amount of target ( $2^{-\Delta C_T}$ ) was obtained by normalizing to an endogenous glyceraldehyde-3-phosphate dehydrogenase (GAPDH) and relative to a calibrator. All primers and probes were purchased from Applied Biosystems/Fisher Scientific). RT-PCR was used to detect possible existence of Gli1 isoforms in the pancreatic cancer cell lines. Primers 5'-TGTTCAACTCGATGACCC-3' & 5'-GTCATGGGGACCACAAGG-3' were used to detect wild type Gli1 (500bp) and truncated Gli1 (tGli1) (377bp). Primers 5'-GGCATCCGACAGAGGTGAGATGGAC-3' and 5'-GAGCCCAGCGCCAGACAGA-3' or 5'-CTGTCTCAGGGAACCGTGGGTCTTTGT-3' were used to detect full-length Gli1 or Gli1 N in pancreatic cancer cell lines.

### ShRNA Expression and Plasmids

We purchased shRNAs specific to Gli2 or Gli1 from Sigma (St. Luis, Mo, USA) and forced their expression in cells through lentivirus-mediated expression. For every five shRNAs tested for each gene, we found at least two shRNAs with reduced expression of the target genes in this study. Plasmids for Gli1 and Gli2 expression were from our previous study (58) with a MYC (Gli1) or Flag (Gli2) tag at the N-terminus.

### Flow Cytometry

We obtained single cells from cells or tissues, and subjected them to anti-CD24 antibody staining. Fluorescence labelled antibodies purchased from BioLegend (San Diego, CA, USA) were incubated with cells for 30 min on ice (with 1:200 dilutions).

### Orthotopic mouse model and subcutaneous xenografts of pancreatic cancer

Pancreatic cancer cells (Colo357, Colo357-GR-shNC and Colo357-GR-shGli2) with stable expression of luciferase were harvested in single cell suspension at a concentration of  $1 \times 10^6$  cells/ml. A total of  $2 \times 10^5$  cells (in 50  $\mu$ L of growth medium) were injected into pancreas of the NOD/scid/ IL2R $\beta$  null mice (NSG) with a 27-gauge needle as reported previously (59). For subcutaneous xenografts,  $1 \times 10^6$  cells were injected subcutaneously into NSG mice. Tumors in subcutaneous models were measured with a caliper twice a week whereas the tumor in orthotopic mouse models was measured by luciferase activity within cancer cells once a week. Two to three weeks after tumor transplantation, the mice were weighed and randomized (with each group with similar tumor size, with less than 20% difference among the mice and <20% difference between groups) into two treatment groups: vehicle control or 25-mg/kg gemcitabine by i.v injection, twice per week for 2 weeks. Mice with no tumor growth will be excluded from further treatment study. Generally, we have at least 3 mice for each treatment group, and the experiment was carried out in both orthotopic and

subcutaneous models. Mice were euthanized by carbon dioxide asphyxia after treatment. Tumor lesions in both models were harvested and divided into several portions. Some were snap-frozen in liquid nitrogen for mRNA extraction; some were embedded in paraffin; some were cut into small pieces with scissors and then digested with collagenase IV to obtain single-cell suspension for flow cytometry analysis. Animal studies were approved by Indiana University School of Medicine (IACUC# 11370).

### Immunohistochemistry Staining

PDAC tissue microarray (TMA) was generated in IU School of Medicine by the Pancreatic Cancer Signature Center. The TMA contained 35 patients at IIB stage. All patients received gemcitabine chemotherapy. Overall survival (OS) was defined as the time interval between the date of histological diagnosis and the date of death from any cause.

Immunohistochemistry was performed as described previously (60). In brief, after removing paraffin and underwent a series of hydration steps, the slides were treated with endogenous peroxidase in 0.3% H<sub>2</sub>O<sub>2</sub> for 30 min. After blocking non-specific binding sites with 1% BSA, tissue sections were incubated with specific Sox2 antibodies (at 1:1500 dilution) at 37 °C in humid chambers for 2 hours. We detected the antibody binding with streptavidin–biotin–peroxidase complex/HRP (VECTOR, USA) and substrate 3, 3-diaminobenzidine for 3 min. Hematoxylin was used for counterstaining.

### ChIP Assay

We performed ChIP assay according to the manufacturer's instructions(58). Briefly, chromatin DNA was first cross-linked by 1% formaldehyde, and genomic DNAs sheared by sonication in the presence of protease inhibitors. After removing the pellets, we performed immunoprecipitation by incubation of the aqueous phase mixture with primary antibodies against histone H3, Myc, Flag or IgG (as a negative control). The precipitated DNA fragments were analyzed by PCR with the following Sox2 promoter primers: Pair 1F 5'-TGTTGTCAGGGTACTTAAATGA-3', pair 1R GAGGACAGAGGTTTGGGTCT; Pair 2F 5'-GCGTCCCATCCTCATTTAAG-3' and Pair2-R 5'-AGCAACAGGTCACACCACAC'3'. Please note that pair1 is for the Gli-binding consensus site-containing fragment whereas pair2 is for the fragment without such a site.

### Human specimens

Collection of human specimens were approved by The Institutional research board at Indiana University with IRB Study EX0909–22. All the patient information were removed before specimens were used by the end users in this study.

### Statistical analyses

Results are expressed as the mean± SD. All statistical comparisons were made with a standard *t* test (two-tailed), using biostatistics software from GraphPad Prism. Sample size was determined by POWER analysis. We predict that the difference between the treatment group and the control group will be >50%. Using Chi-Square analysis, we will need 5 mice/group to achieve a statistically significant data (80% POWER with type I error <0.05). We

have at least 6 mice (with 3 males and 3 females) in orthotopic and subcutaneous mouse models in our study. The criteria for significance were  $P < 0.05$  for all comparisons.

## Supplementary Material

Refer to Web version on PubMed Central for supplementary material.

## ACKNOWLEDGEMENTS

We thank you Professor Keping Xie and Dr. Zizheng Dong for help with cell line generation, and generous support from the Department of Pediatrics, The Well Center for Pediatric Research, Jeff Gordon Research Laboratory, AGA, Healthcare Initiatives, Inc., and CTSI Indiana. The bioinformatics data analysis was performed in collaboration with the Collaborative Core for Cancer Bioinformatics (C3B) shared by Indiana University Simon Cancer Center and Purdue University Center for Cancer Research with support from the Walther Cancer Foundation.

**Grant support** This work was supported by the following grants and foundations: NIH-R01-155086; Riley Foundation for Children; National Natural Science Foundation of China (No. 31671468 and 81602593), Shandong Provincial Natural Science Foundation of China (ZR2015HM018).

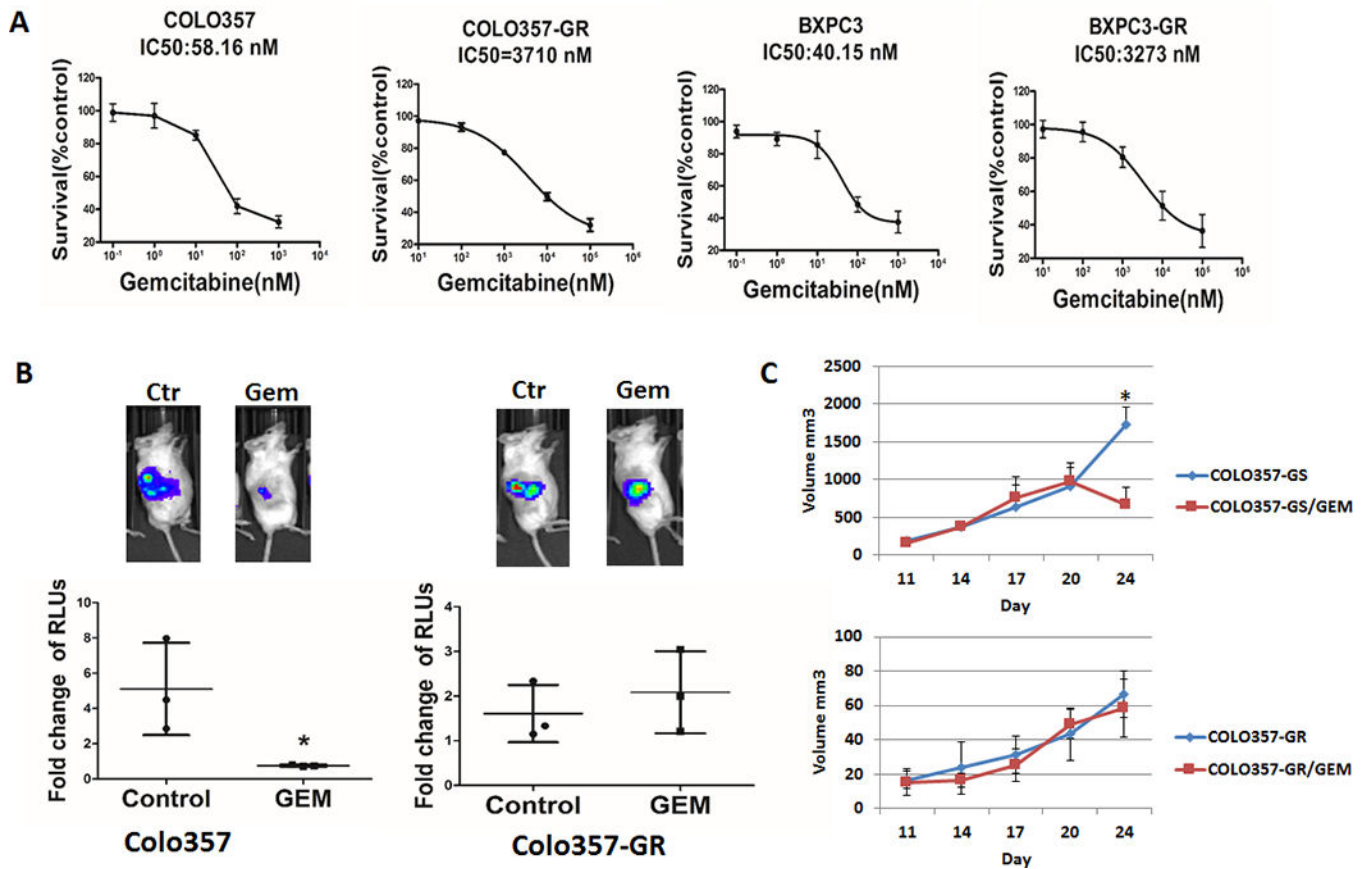
## REFERENCES

1. Siegel RL, Miller KD, Jemal A. Cancer Statistics, 2017. *CA: a cancer journal for clinicians* 2017
2. Gudjonsson B Cancer of the pancreas. 50 years of surgery. *Cancer* 1987;60:2284–303 [PubMed: 3326653]
3. Vogelzang NJ, Benowitz SI, Adams S, Aghajanian C, Chang SM, Dreyer ZE, et al. Clinical cancer advances 2011: Annual Report on Progress Against Cancer from the American Society of Clinical Oncology. *J Clin Oncol* 2012;30:88–109 [PubMed: 22147736]
4. Rahib L, Smith BD, Aizenberg R, Rosenzweig AB, Fleshman JM, Matrisian LM. Projecting cancer incidence and deaths to 2030: the unexpected burden of thyroid, liver, and pancreas cancers in the United States. *Cancer Res* 2014;74:2913–21 [PubMed: 24840647]
5. Von Hoff DD, Ervin T, Arena FP, Chiorean EG, Infante J, Moore M, et al. Increased survival in pancreatic cancer with nab-paclitaxel plus gemcitabine. *N Engl J Med* 2013;369:1691–703 [PubMed: 24131140]
6. Olive KP, Jacobetz MA, Davidson CJ, Gopinathan A, McIntyre D, Honess D, et al. Inhibition of Hedgehog signaling enhances delivery of chemotherapy in a mouse model of pancreatic cancer. *Science* 2009;324:1457–61 [PubMed: 19460966]
7. Zhang Z, Duan Q, Zhao H, Liu T, Wu H, Shen Q, et al. Gemcitabine treatment promotes pancreatic cancer stemness through the Nox/ROS/NF-kappaB/STAT3 signaling cascade. *Cancer Lett* 2016;382:53–63 [PubMed: 27576197]
8. Hong SP, Wen J, Bang S, Park S, Song SY. CD44-positive cells are responsible for gemcitabine resistance in pancreatic cancer cells. *Int J Cancer* 2009;125:2323–31 [PubMed: 19598259]
9. Zhao H, Duan Q, Zhang Z, Li H, Wu H, Shen Q, et al. Up-regulation of glycolysis promotes the stemness and EMT phenotypes in gemcitabine-resistant pancreatic cancer cells. *J Cell Mol Med* 2017;21:2055–67 [PubMed: 28244691]
10. Mondesire WH, Jian W, Zhang H, Ensor J, Hung MC, Mills GB, et al. Targeting mammalian target of rapamycin synergistically enhances chemotherapy-induced cytotoxicity in breast cancer cells. *Clinical cancer research : an official journal of the American Association for Cancer Research* 2004;10:7031–42 [PubMed: 15501983]
11. Schniewind B, Christgen M, Kurdow R, Haye S, Kremer B, Kalthoff H, et al. Resistance of pancreatic cancer to gemcitabine treatment is dependent on mitochondria-mediated apoptosis. *International journal of cancer Journal international du cancer* 2004;109:182–8 [PubMed: 14750167]
12. Tesse A, Ricotti L, De Paola F, Amadori D, Frassinetti GL, Zoli W. In Vitro schedule-dependent interactions between the multitargeted antifolate LY231514 and gemcitabine in human colon

- adenocarcinoma cell lines. *Clinical cancer research : an official journal of the American Association for Cancer Research* 2002;8:233–9 [PubMed: 11801564]
13. Abel EV, Simeone DM. Biology and clinical applications of pancreatic cancer stem cells. *Gastroenterology* 2013;144:1241–8 [PubMed: 23622133]
  14. Takebe N, Miele L, Harris PJ, Jeong W, Bando H, Kahn M, et al. Targeting Notch, Hedgehog, and Wnt pathways in cancer stem cells: clinical update. *Nature reviews Clinical oncology* 2015;12:445–64
  15. Taipale J, Beachy PA. The Hedgehog and Wnt signalling pathways in cancer. *Nature* 2001;411:349–54 [PubMed: 11357142]
  16. Reya T, Morrison SJ, Clarke MF, Weissman IL. Stem cells, cancer, and cancer stem cells. *Nature* 2001;414:105–11 [PubMed: 11689955]
  17. Cao X, Geradts J, Dewhirst MW, Lo HW. Upregulation of VEGF-A and CD24 gene expression by the tGLI1 transcription factor contributes to the aggressive behavior of breast cancer cells. *Oncogene* 2012;31:104–15 [PubMed: 21666711]
  18. Shimokawa T, Tostar U, Lauth M, Palaniswamy R, Kasper M, Toftgard R, et al. Novel human glioma-associated oncogene 1 (GLI1) splice variants reveal distinct mechanisms in the terminal transduction of the hedgehog signal. *J Biol Chem* 2008;283:14345–54 [PubMed: 18378682]
  19. Zhang L, Song R, Gu D, Zhang X, Yu B, Liu B, et al. The role of GLI1 for 5-Fu resistance in colorectal cancer. *Cell Biosci* 2017;7:17 [PubMed: 28413604]
  20. Yu B, Gu D, Zhang X, Li J, Liu B, Xie J. GLI1-mediated regulation of side population is responsible for drug resistance in gastric cancer. *Oncotarget* 2017;8:27412–27 [PubMed: 28404967]
  21. Li C, Heidt DG, Dalerba P, Burant CF, Zhang L, Adsay V, et al. Identification of pancreatic cancer stem cells. *Cancer Res* 2007;67:1030–7 [PubMed: 17283135]
  22. Stacy AE, Jansson PJ, Richardson DR. Molecular pharmacology of ABCG2 and its role in chemoresistance. *Mol Pharmacol* 2013;84:655–69 [PubMed: 24021215]
  23. Peter ME. The flip side of FLIP. *Biochem J* 2004;382:e1–3 [PubMed: 15317488]
  24. Frenzel A, Grespi F, Chmielewski W, Villunger A. Bcl2 family proteins in carcinogenesis and the treatment of cancer. *Apoptosis* 2009;14:584–96 [PubMed: 19156528]
  25. Weiswald LB, Bellet D, Dangles-Marie V. Spherical cancer models in tumor biology. *Neoplasia* 2015;17:1–15 [PubMed: 25622895]
  26. Gu D, Liu H, Su GH, Zhang X, Chin-Sinex H, Hanenberg H, et al. Combining hedgehog signaling inhibition with focal irradiation on reduction of pancreatic cancer metastasis. *Mol Cancer Ther* 2013;12:1038–48 [PubMed: 23468532]
  27. Kim EJ, Sahai V, Abel EV, Griffith KA, Greenson JK, Takebe N, et al. Pilot clinical trial of hedgehog pathway inhibitor GDC-0449 (vismodegib) in combination with gemcitabine in patients with metastatic pancreatic adenocarcinoma. *Clin Cancer Res* 2014;20:5937–45 [PubMed: 25278454]
  28. Catenacci DV, Junttila MR, Karrison T, Bahary N, Horiba MN, Nattam SR, et al. Randomized Phase Ib/II Study of Gemcitabine Plus Placebo or Vismodegib, a Hedgehog Pathway Inhibitor, in Patients With Metastatic Pancreatic Cancer. *J Clin Oncol* 2015;33:4284–92 [PubMed: 26527777]
  29. O'Neil BH, Scott AJ, Ma WW, Cohen SJ, Leichman L, Aisner DL, et al. A phase II/III randomized study to compare the efficacy and safety of rigosertib plus gemcitabine versus gemcitabine alone in patients with previously untreated metastatic pancreatic cancer. *Ann Oncol* 2015;26:2505
  30. Chen W, Zhang X, Chu C, Cheung WL, Ng L, Lam S, et al. Identification of CD44+ cancer stem cells in human gastric cancer. *Hepato-gastroenterology* 2013;60:949–54 [PubMed: 23478146]
  31. Chen T, Yang K, Yu J, Meng W, Yuan D, Bi F, et al. Identification and expansion of cancer stem cells in tumor tissues and peripheral blood derived from gastric adenocarcinoma patients. *Cell research* 2012;22:248–58 [PubMed: 21727908]
  32. Fukamachi H, Shimada S, Ito K, Ito Y, Yuasa Y. CD133 is a marker of gland-forming cells in gastric tumors and Sox17 is involved in its regulation. *Cancer science* 2011;102:1313–21 [PubMed: 21457403]

33. Ishimoto T, Nagano O, Yae T, Tamada M, Motohara T, Oshima H, et al. CD44 variant regulates redox status in cancer cells by stabilizing the xCT subunit of system xc(−) and thereby promotes tumor growth. *Cancer cell* 2011;19:387–400 [PubMed: 21397861]
34. Wang T, Ong CW, Shi J, Srivastava S, Yan B, Cheng CL, et al. Sequential expression of putative stem cell markers in gastric carcinogenesis. *British journal of cancer* 2011;105:658–65 [PubMed: 21829201]
35. Jiang J, Zhang Y, Chuai S, Wang Z, Zheng D, Xu F, et al. Trastuzumab (herceptin) targets gastric cancer stem cells characterized by CD90 phenotype. *Oncogene* 2012;31:671–82 [PubMed: 21743497]
36. Rassouli FB, Matin MM, Saeinasab M. Cancer stem cells in human digestive tract malignancies. *Tumour biology : the journal of the International Society for Oncodevelopmental Biology and Medicine* 2016;37:7–21 [PubMed: 26446457]
37. Zhao D, Zou SW, Liu Y, Zhou X, Mo Y, Wang P, et al. Lysine-5 acetylation negatively regulates lactate dehydrogenase A and is decreased in pancreatic cancer. *Cancer Cell* 2013;23:464–76 [PubMed: 23523103]
38. Julian LM, McDonald AC, Stanford WL. Direct reprogramming with SOX factors: masters of cell fate. *Curr Opin Genet Dev* 2017;46:24–36 [PubMed: 28662445]
39. Goldman J, Eckhardt SG, Borad MJ, Curtis KK, Hidalgo M, Calvo E, et al. Phase I dose-escalation trial of the oral investigational Hedgehog signaling pathway inhibitor TAK-441 in patients with advanced solid tumors. *Clinical cancer research : an official journal of the American Association for Cancer Research* 2015;21:1002–9 [PubMed: 25501576]
40. LoRusso PM, Rudin CM, Reddy JC, Tibes R, Weiss GJ, Borad MJ, et al. Phase I trial of hedgehog pathway inhibitor vismodegib (GDC-0449) in patients with refractory, locally advanced or metastatic solid tumors. *Clin Cancer Res* 2011;17:2502–11 [PubMed: 21300762]
41. Rahib L, Fleshman JM, Matrisian LM, Berlin JD. Evaluation of Pancreatic Cancer Clinical Trials and Benchmarks for Clinically Meaningful Future Trials: A Systematic Review. *JAMA oncology* 2016;2:1209–16 [PubMed: 27270617]
42. Lauth M, Bergstrom A, Shimokawa T, Toftgard R. Inhibition of GLI-mediated transcription and tumor cell growth by small-molecule antagonists. *Proc Natl Acad Sci U S A* 2007;104:8455–60 [PubMed: 17494766]
43. Kim J, Aftab BT, Tang JY, Kim D, Lee AH, Rezaee M, et al. Itraconazole and arsenic trioxide inhibit Hedgehog pathway activation and tumor growth associated with acquired resistance to smoothened antagonists. *Cancer Cell* 2013;23:23–34 [PubMed: 23291299]
44. Boehme KA, Zaborski JJ, Riestler R, Schweiss SK, Hopp U, Traub F, et al. Targeting hedgehog signalling by arsenic trioxide reduces cell growth and induces apoptosis in rhabdomyosarcoma. *International journal of oncology* 2016;48:801–12 [PubMed: 26676886]
45. Yang D, Cao F, Ye X, Zhao H, Liu X, Li Y, et al. Arsenic trioxide inhibits the Hedgehog pathway which is aberrantly activated in acute promyelocytic leukemia. *Acta Haematol* 2013;130:260–7 [PubMed: 23867347]
46. Platzbecker U, Avvisati G, Cicconi L, Thiede C, Paoloni F, Vignetti M, et al. Improved Outcomes With Retinoic Acid and Arsenic Trioxide Compared With Retinoic Acid and Chemotherapy in Non-High-Risk Acute Promyelocytic Leukemia: Final Results of the Randomized Italian-German APL0406 Trial. *J Clin Oncol* 2016
47. Jeon HM, Sohn YW, Oh SY, Kim SH, Beck S, Kim S, et al. ID4 imparts chemoresistance and cancer stemness to glioma cells by derepressing miR-9\*-mediated suppression of SOX2. *Cancer research* 2011;71:3410–21 [PubMed: 21531766]
48. Piva M, Domenici G, Iriondo O, Rabano M, Simoes BM, Comaills V, et al. Sox2 promotes tamoxifen resistance in breast cancer cells. *EMBO molecular medicine* 2014;6:66–79 [PubMed: 24178749]
49. Mu P, Zhang Z, Benelli M, Karthaus WR, Hoover E, Chen CC, et al. SOX2 promotes lineage plasticity and antiandrogen resistance in TP53- and RB1-deficient prostate cancer. *Science* 2017;355:84–8 [PubMed: 28059768]
50. Yang L, Xie G, Fan Q, Xie J. Activation of the hedgehog-signaling pathway in human cancer and the clinical implications. *Oncogene* 2010;29:469–81 [PubMed: 19935712]

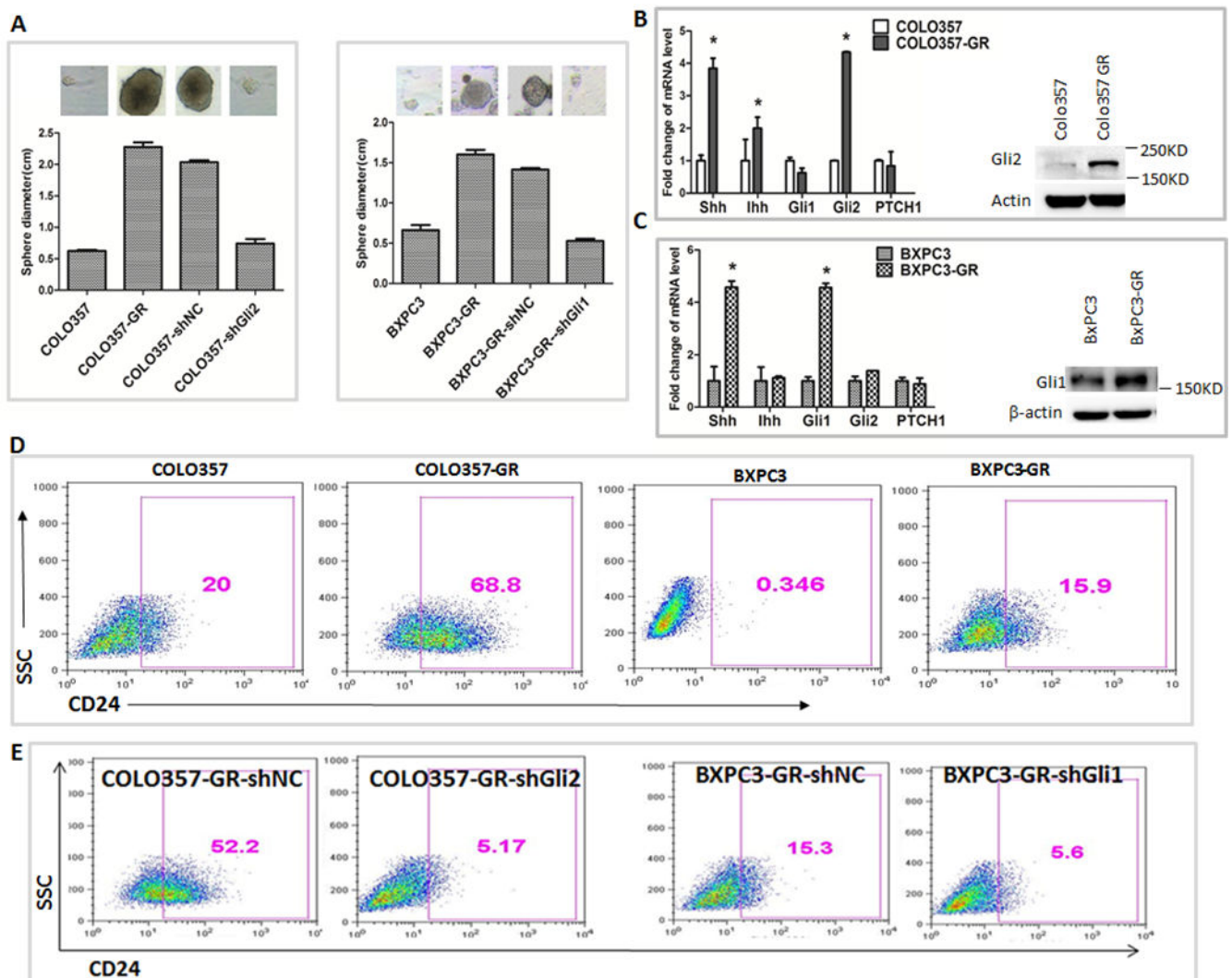
51. Justilien V, Fields AP. Molecular pathways: novel approaches for improved therapeutic targeting of Hedgehog signaling in cancer stem cells. *Clinical cancer research : an official journal of the American Association for Cancer Research* 2015;21:505–13 [PubMed: 25646180]
52. Laressesgues E, Heusler P, Lestienne F, Troulier D, Raully-Lestienne I, Tourette A, et al. Pharmacological evaluation of a series of smoothed antagonists in signaling pathways and after topical application in a depilated mouse model. *Pharmacol Res Perspect* 2016;4:e00214 [PubMed: 27069629]
53. Cheung HO, Zhang X, Ribeiro A, Mo R, Makino S, Puvindran V, et al. The kinesin protein Kif7 is a critical regulator of Gli transcription factors in mammalian hedgehog signaling. *Sci Signal* 2009;2:ra29 [PubMed: 19549984]
54. Liu H, Gu D, Xie J. Clinical implications of hedgehog signaling pathway inhibitors. *Chin J Cancer* 2011;30:13–26 [PubMed: 21192841]
55. Huang S, He J, Zhang X, Bian Y, Yang L, Xie G, et al. Activation of the hedgehog pathway in human hepatocellular carcinomas. *Carcinogenesis* 2006;27:1334–40 [PubMed: 16501253]
56. Ma X, Sheng T, Zhang Y, Zhang X, He J, Huang S, et al. Hedgehog signaling is activated in subsets of esophageal cancers. *Int J Cancer* 2006;118:139–48 [PubMed: 16003737]
57. Fan Q, Gu D, Liu H, Yang L, Zhang X, Yoder MC, et al. Defective TGF-beta signaling in bone marrow-derived cells prevents hedgehog-induced skin tumors. *Cancer Res* 2014;74:471–83 [PubMed: 24282281]
58. He J, Sheng T, Stelter AA, Li C, Zhang X, Sinha M, et al. Suppressing Wnt signaling by the hedgehog pathway through sFRP-1. *J Biol Chem* 2006;281:35598–602 [PubMed: 17035233]
59. Bruns CJ, Harbison MT, Kuniyasu H, Eue I, Fidler IJ. In vivo selection and characterization of metastatic variants from human pancreatic adenocarcinoma by using orthotopic implantation in nude mice. *Neoplasia* 1999;1:50–62 [PubMed: 10935470]
60. Athar M, Li C, Tang X, Chi S, Zhang X, Kim AL, et al. Inhibition of smoothed signaling prevents ultraviolet B-induced basal cell carcinomas through regulation of Fas expression and apoptosis. *Cancer Res* 2004;64:7545–52 [PubMed: 15492281]



**Figure 1. Characterization of gemcitabine resistance of pancreatic cancer cells.**

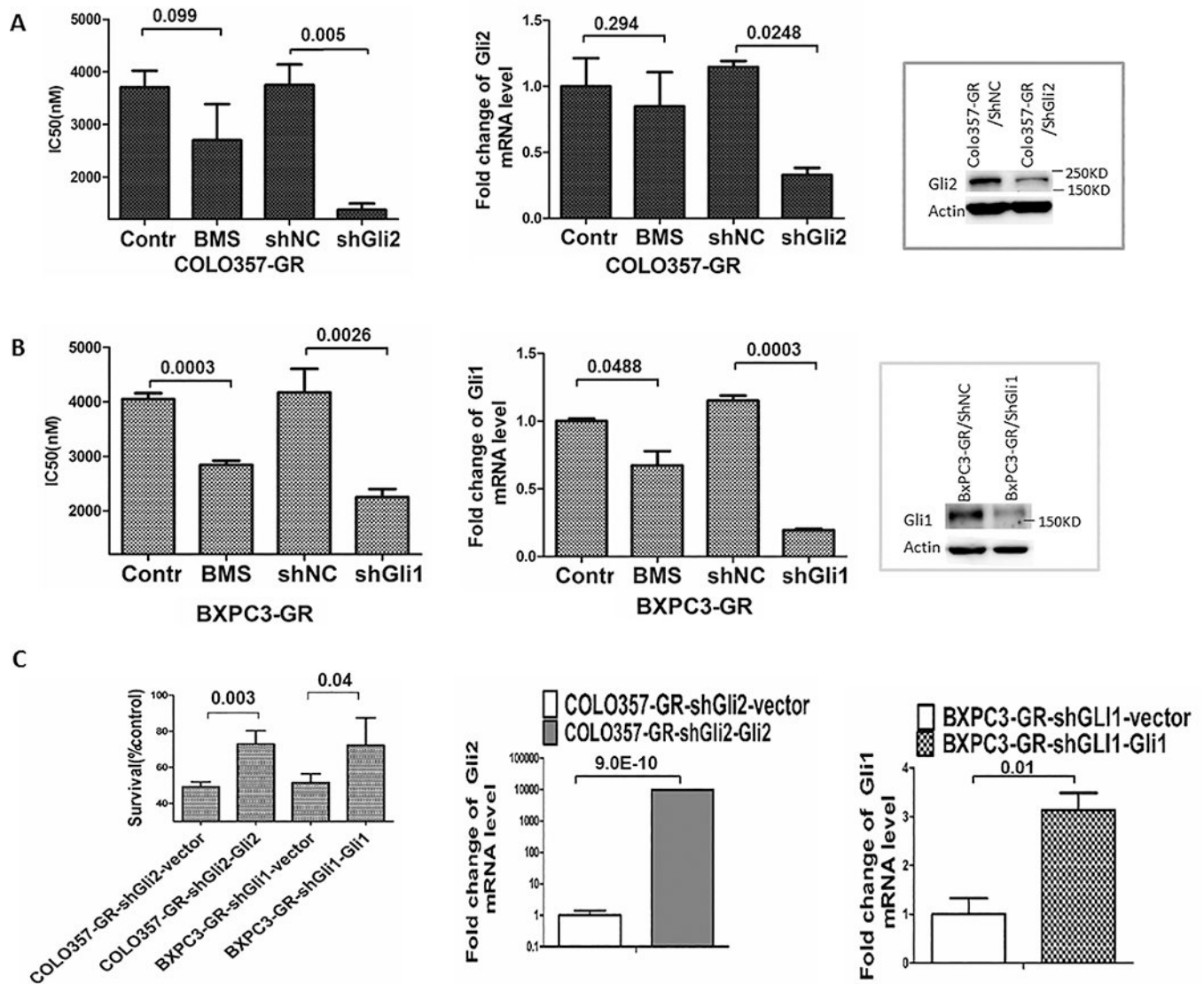
**A** shows the IC<sub>50</sub> values for gemcitabine in COLO357, COLO357-GR, BXPC3 and BXPC3-GR cells. Data points are average of duplicate wells from two independent assays. **B** shows a different response of COLO357 in comparison with COLO357-GR to gemcitabine in orthotopic pancreatic cancer models. **C** shows the growth curves of subcutaneous tumors following gemcitabine treatment or left untreated (vehicle control). The top shows the tumor growth curve from Colo357 parental cells (shown as Colo357-GS), and the bottom shows the tumor growth curve from Colo357-GR cells (shown as Colo357-GR). Gemcitabine treatment group was shown as GEM. \* indicates p value < 0.05 based on Student's *t* test.





**Figure 2. Association of elevated GLI expression with tumor sphere formation and CD24 expression.**

**A** shows a summary of tumor sphere data in gemcitabine resistant Colo357 cells (shown as Colo357-GR) and the parental cells (shown as Colo357) on the left, and gemcitabine resistant BxPC3 (shown as BxPC3-GR) and the parental cells (shown as BxPC3) on the right. The top shows the typical tumor sphere morphology, and the bottom panel shows the average diameter of the tumor spheres. **B** shows the relative expression of Hh pathway molecules in Colo357 cells using quantitative PCR (qPCR). **C** shows the relative expression of Hh pathway molecules in BxPC3 cells using quantitative PCR (qPCR). We also detected GLI1 and GLI2 proteins (shown at the right). **D** shows flow cytometry data of CD24 positivity (percentage) in different cell lines. **E** shows CD24 positivity (as percentage) in difference cell lines after shRNA expression. \* indicates  $p$  value < 0.05 based on Student's  $t$  test.



**Figure 3. Reduced expression of GLI transcription factors, but not SMO inhibition, sensitizes pancreatic cancer cells to gemcitabine treatment.**

**A** shows the treated data from SMO antagonist BMS-833923 (shown as BMS in the figure) or GLI2-shRNAs in COLO357-GR cells. GLI2 shRNAs, but not BMS-833923, were more effective in sensitizing COLO357-GR cells to gemcitabine treatment (left). GLI2 shRNAs reduced expression of GLI2 while BMS833923 had little effects (right). **B** shows the data from treatment with BMS-833923 or GLI1-shRNAs in BXPC3-GR cells. GLI1 shRNAs, but not BMS833923, were more effective in sensitizing BXPC3-GR cells to gemcitabine treatment (left). The GLI1 level was reduced more significantly by GLI1 shRNAs than by BMS-833923 (Center). GLI1 protein was also detected by Western blotting (right). **C** shows the specificity of shRNAs by re-expression of GLI1 or GLI2 and their effects on cell viability after gemcitabine (2mM) treatment. Overexpression GLI2 or GLI1 increased gemcitabine resistance in COLO357-GR-shGli2 and BXPC3-GR-shGli1 cells (left).

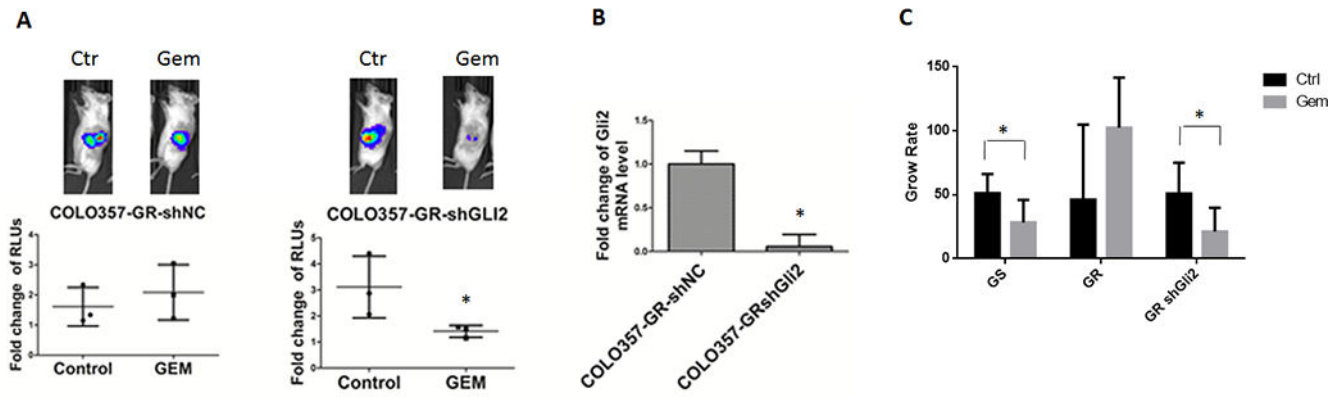
Expression of GLI1 (bottom right) and GLI2 (bottom left) was detected by real-time PCR.  $P < 0.05$  was regarded as significant changes.

Author Manuscript

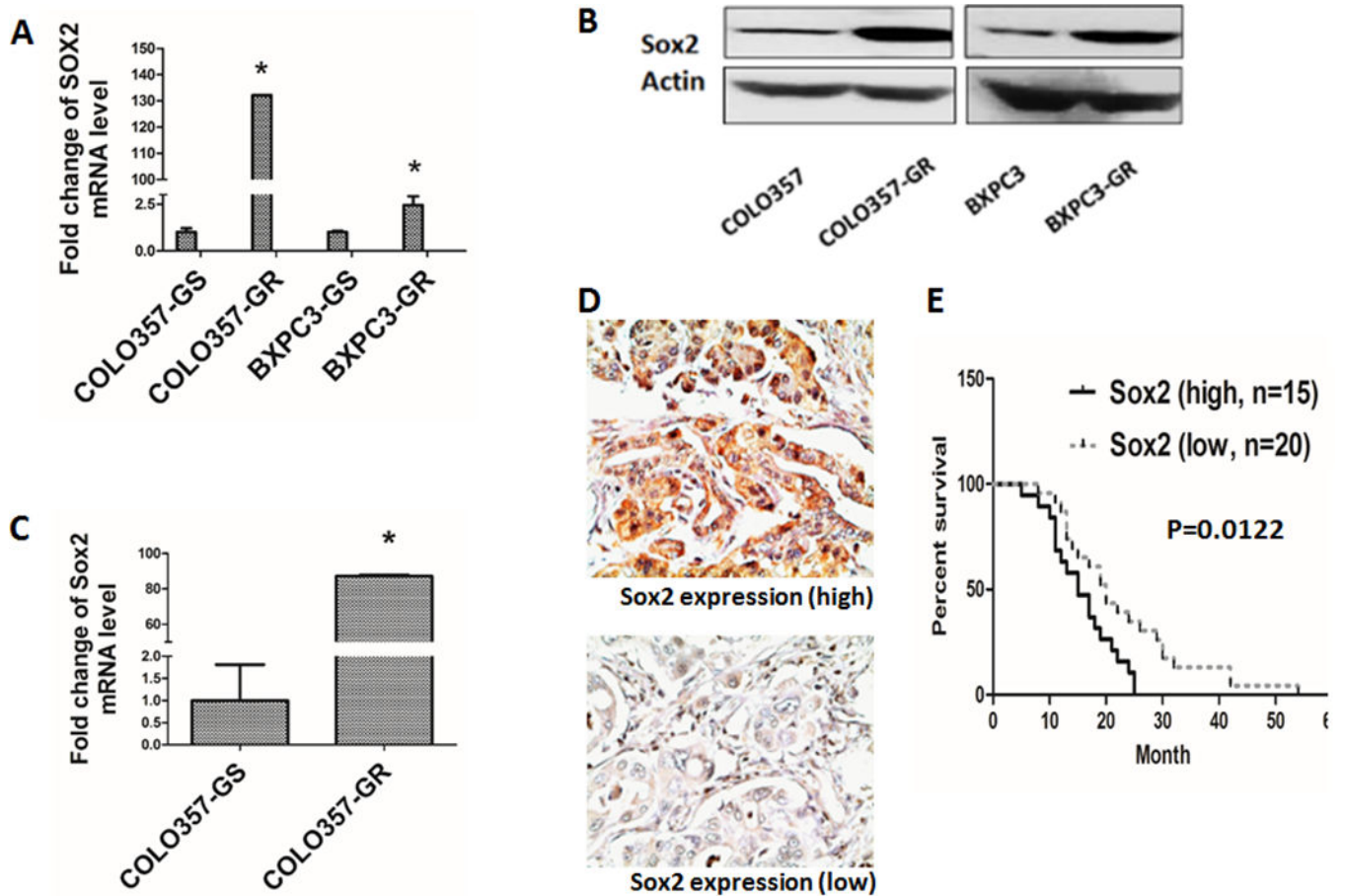
Author Manuscript

Author Manuscript

Author Manuscript

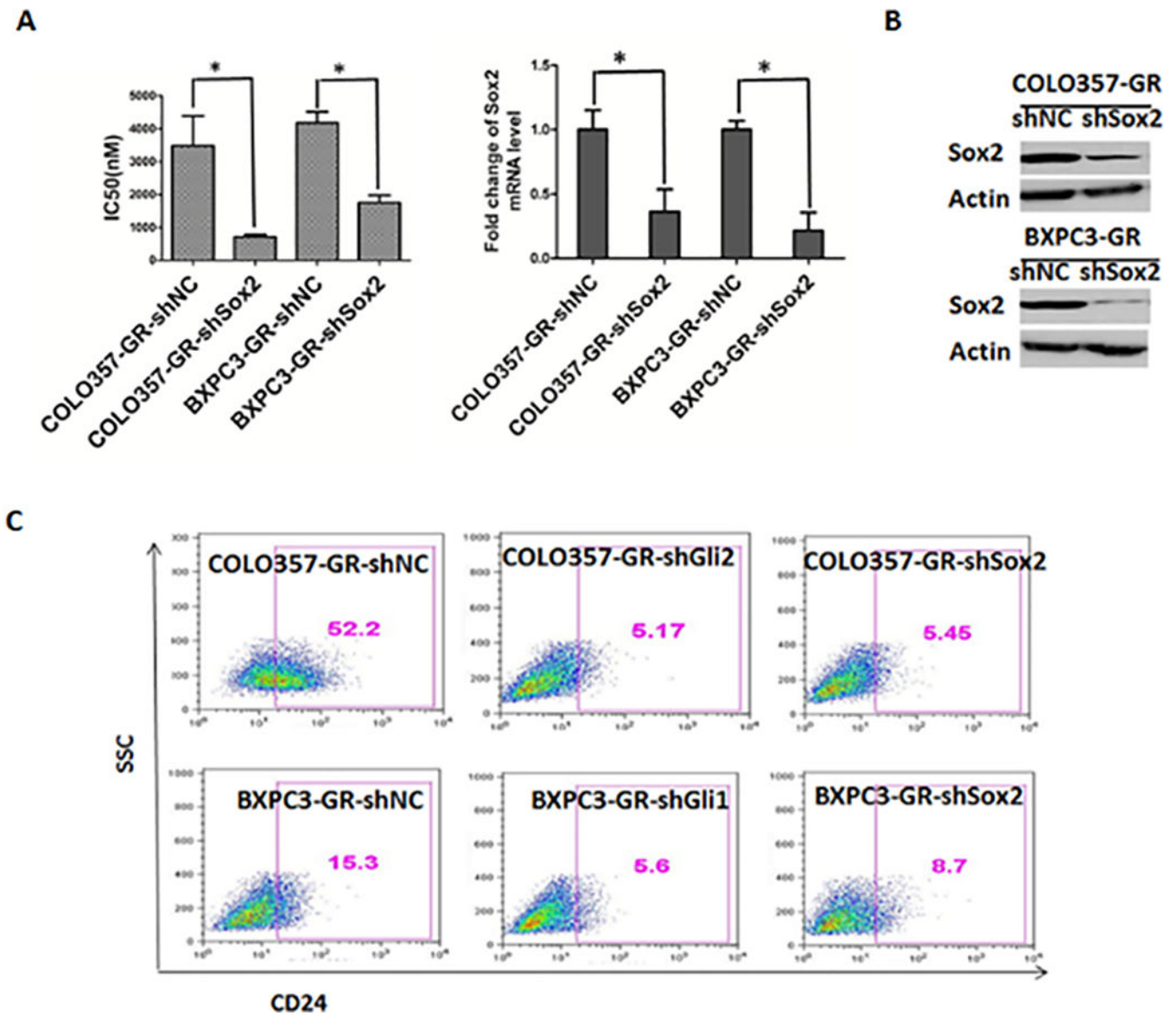


**Fig.4. The effect of GLI2 knockdown on gemcitabine response in an orthotopic mouse model.** **A** shows the effect of GLI2 knockdown in tumor response to gemcitabine in mice (left for the Colo357-GR-shNC as control, right for Colo357-GR-shGli2). **B** shows down-regulation of Gli2 as confirmed by qPCR analysis. **C**. shows the data from subcutaneous tumors (GS as Colo357 parental cells; GR as Colo357-gemcitabine resistant cells; GR-shGli2 as GLI2 shRNA expressing Colo357-GR cells). Statistically significant findings were denoted when  $*P < 0.05$ .



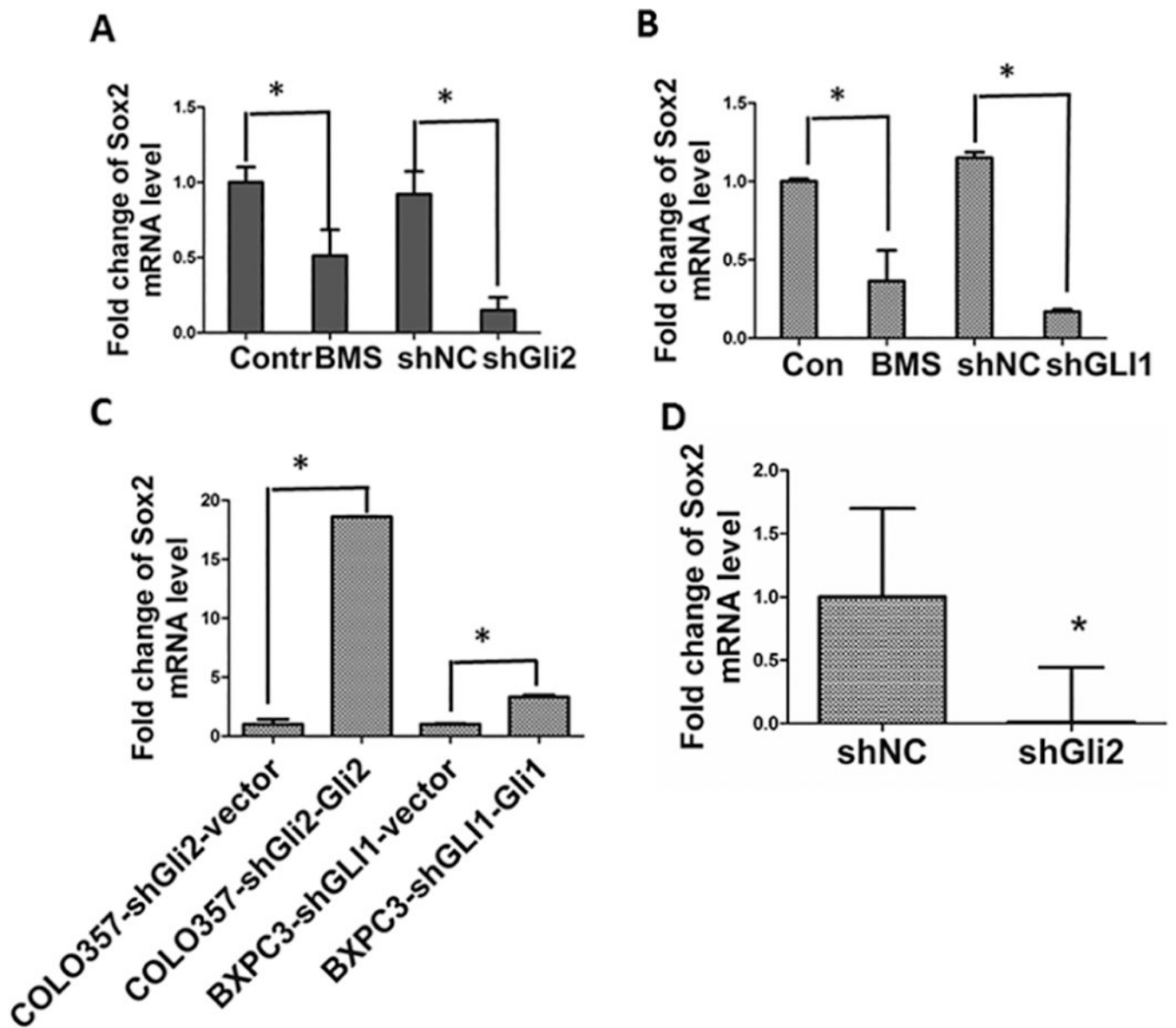
**Fig.5. Association of Sox2 expression with gemcitabine resistance in pancreatic cancer cell lines and patient survival.**

**A** and **B** show the relative gene (A) and protein (B) expression of Sox2 in different cell lines. **C** shows the relative transcript level of Sox2 in the orthotopic mouse models of pancreatic cancer (Colo357-GS as colo357 parental cells and Colo357-GR as gemcitabine resistant Colo357 cells). **D** shows typical high and low sox2 staining in human pancreatic cancer specimens. **E** shows the Kaplan–Meier plots of patients with high or low Sox2 expression (Long-rank test). Statistically significant findings were denoted when \* $P < 0.05$ .



**Figure 6. The role of Sox2 in gemcitabine resistance.**

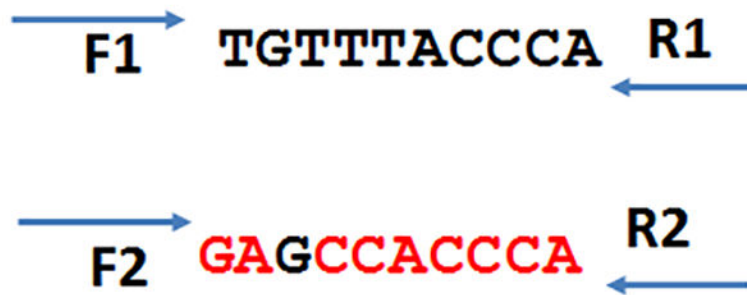
**A** shows the effect of Sox2 knockdown on gemcitabine treatment (left shows the IC50 change, right shows the relative gene expression), and **B** shows the Sox2 protein level. **C** shows the effect of shRNAs of GLI2 (COLO357-GR), GLI1 (BxPC3-GR) and Sox2 on CD24 positivity following flow cytometry analysis.



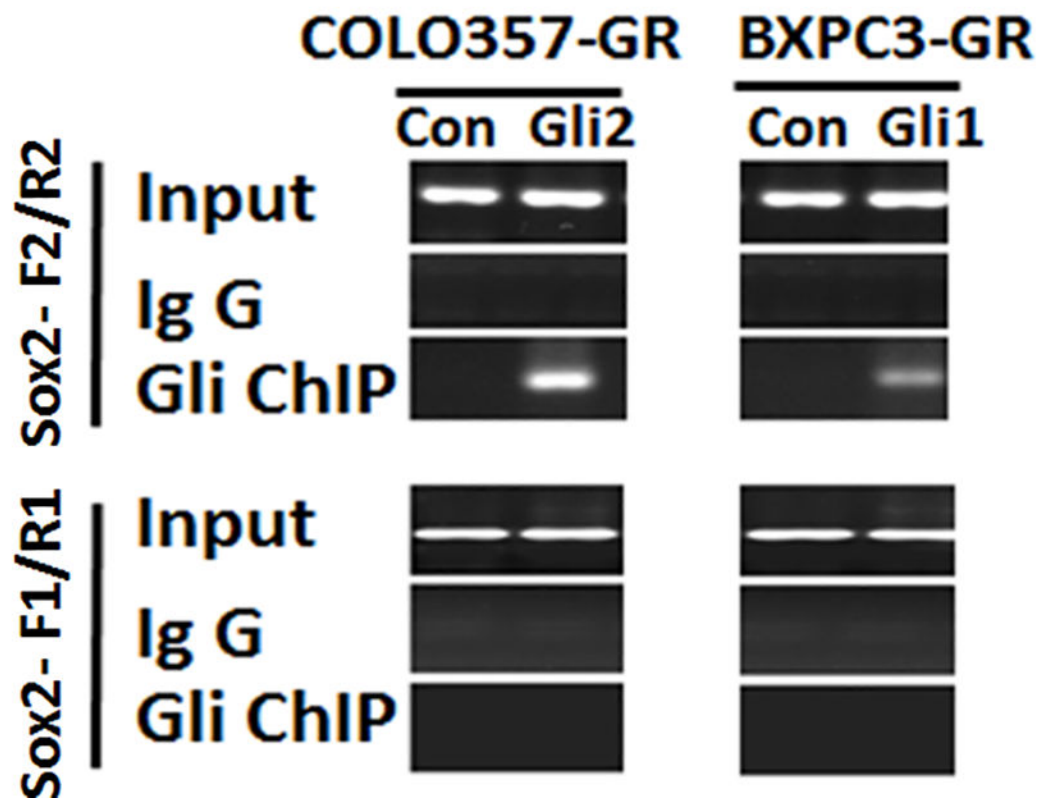
**Fig.7. Regulation of Sox2 by Gli1 and Gli2.**

**A** shows Sox2 expression following treatment with BMS-833923, a specific inhibitor for SMO or expression of GLI2 shRNAs in COLO357-GR cells. **B** shows Sox2 expression following treatment with BMS-833923, a specific inhibitor for SMO or expression of GLI2 shRNAs in BxPC3-GR cells. **C** shows regulation of Sox2 by ectopic expression of GLI1 and GLI2 in COLO357 and BxPC3 cells (similar to Fig.3C). **D** shows reduced expression of Sox2 by GLI2 shRNAs in tumors derived from COLO357-GR-control shRNA and COLO357-GLI2-shRNAs in an orthotopic mouse model.

## A- Primer designs



## B- ChIP analysis



**Fig.8. Binding of Sox2 promoter fragments by Gli1 and Gli2 proteins as revealed by ChIP.** A shows a putative GLI binding site in a PCR product from primers F1/R1 and F2/R2. B shows the PCR products generated by two pairs of primers F1/R1 (no GLI binding consensus sites) and F2/R2 (with one Gli binding consensus site) following chromatin immunoprecipitation with GLI1 (MYC) and GLI2 (Flag) antibodies (see Methods). Mouse IgG proteins were used as the negative control.