

University of Massachusetts Medical School

eScholarship@UMMS

Open Access Articles

Open Access Publications by UMMS Authors

2019-06-03

Methodology of an exercise intervention program using social incentives and gamification for obese children

Yue Fang

Shanghai Jiao Tong University

Et al.

Let us know how access to this document benefits you.

Follow this and additional works at: <https://escholarship.umassmed.edu/oapubs>



Part of the [Community Health and Preventive Medicine Commons](#), [Exercise Science Commons](#), [Health Information Technology Commons](#), [Health Services Administration Commons](#), [Health Services Research Commons](#), [Nutritional and Metabolic Diseases Commons](#), [Pathological Conditions, Signs and Symptoms Commons](#), and the [Preventive Medicine Commons](#)

Repository Citation

Fang Y, Ma Y, Mo D, Zhang S, Xiang M, Zhang Z. (2019). Methodology of an exercise intervention program using social incentives and gamification for obese children. Open Access Articles. <https://doi.org/10.1186/s12889-019-6992-x>. Retrieved from <https://escholarship.umassmed.edu/oapubs/3871>

Creative Commons License



This work is licensed under a [Creative Commons Attribution 4.0 License](#).

This material is brought to you by eScholarship@UMMS. It has been accepted for inclusion in Open Access Articles by an authorized administrator of eScholarship@UMMS. For more information, please contact Lisa.Palmer@umassmed.edu.

STUDY PROTOCOL

Open Access



Methodology of an exercise intervention program using social incentives and gamification for obese children

Yue Fang¹, Yunsheng Ma², Dandan Mo¹, Shunxing Zhang³, Mi Xiang^{1*}  and Zhiruo Zhang^{1*}

Abstract

Background: Traditional exercise [supervised exercise (SE)] intervention has been proved to be one of the most effective ways to improve metabolic health. However, most exercise interventions were on a high-cost and small scale, moreover lacking of the long-term effect due to low engagement. On the other hand, it was noteworthy that gamification and social incentives were promising strategies to increase engagement and sustain exercise interventions effects; as well as mobile technologies such as WeChat also can provide an appropriate platform to deploy interventions on a broader, low-cost scale. Thus, we aim to develop a novel exercise intervention ('S&G exercise intervention') that combines SE intervention with gamification and social incentives design through WeChat, with the aim of improving metabolic health and poor behaviors among overweight and obesity children.

Methods: We propose a randomized controlled trial of a 'S&G exercise intervention' among 420 overweight and obese children who have at least one marker of metabolic syndrome. Children will be randomized to control or intervention group in a 1:1 ratio. The exercise intervention package includes intervention designs based on integrated social incentives and gamification theory, involving targeted essential volume and intensity of activity (skipping rope) as well as monitoring daily information and providing health advice by WeChat. Participants will undertake assessments at baseline, at end of intervention period, in the follow-up time at months 3,6,12. The primary outcome is outcome of metabolic health. Secondary outcomes include behavioral (e.g., diary physical activity, diet) and anthropometric measures (e.g., body fat rate and muscle mass).

Discussions: This will be the first study to design an exercise intervention model that combines traditional supervised exercise (SE) intervention with gamification and social incentives theory through WeChat. We believed that this study could explore a low-cost, easy-to-popularize, and effective exercise intervention model for improving metabolic health and promote healthy among obese children. Furthermore, it will also provide important evidence for guidelines to prevent and improve metabolic health and health behaviors.

Trial registration: 10-04-2019;Registration number: [ChiCTR1900022396](https://www.chictr.org/record/ChiCTR1900022396).

Keywords: Exercise, Social incentive, Gamification, WeChat, Metabolic health, Healthy behaviors

* Correspondence: kou_mitsu@hotmail.com; zhangzhiruo@sjtu.edu.cn

¹School of Public Health, Shanghai Jiao Tong University, Shanghai 200025, China

Full list of author information is available at the end of the article



Background

Childhood obesity is correlated with cardiovascular disease (CVD) and type 2 diabetes in adulthood [1–3]. The worldwide prevalence of childhood obesity has been steadily increasing in the past decades [4, 5]. China has now joined this world epidemic, a recent survey suggested that mean prevalence of overweight and obesity increased from 5.3% (5.2–5.4) in 1995 to 20.5% (20.4–20.7) in 2014 [6]. Moreover, a Chinese study reported that in 2010–2015, the age-adjusted prevalence of overweight and obesity among boys increased from 21.2 to 31.7% and from 10.6 to 16.9% among girls [7]. It has been proved that obese children are more likely to have metabolic diseases than his/her non-obese peers [8]. Indeed, up to 90% of overweight adolescents had at least one marker of metabolic syndrome and 56% had two markers [3]. Moreover, the risk of metabolic diseases in adults is formed from childhood [9], and some studies has demonstrated that metabolic abnormality in childhood obesity may be a significant predictor to CVD and other chronic diseases in adulthood [10, 11]. Therefore, it is important for obese children to improve metabolic health in early childhood.

There is strong evidence that exercise, especially traditional supervised exercise (SE), is one of the effective ways to improve metabolic disease risk factors [12, 13]. As the traditional supervised exercise (SE) ensure intensity and dose of physical activity. Indeed, the importance of activity intensity and dose has been also emphasized in several systematic reviews [13–15].

A systematic review has found that only moderate and high intensity exercise can improve health outcomes such as obesity and elevated blood glucose level, rather than low intensity exercise [16]. Therefore, it has even been demonstrated that SE interventions is even more effective than daily physical activity (PA) intervention in improving outcomes including metabolic biomarkers [16]. However, previous SE intervention was mainly supervised by health professionals, resulting in high cost and difficult to translate into large scale [16–18]. In addition, most SE interventions are lack of motivation and interest, because it specified repetitive exercise content or form. Which also makes it difficult for participants to develop the exercise habit and keep on when the intervention stopped, so that the long-term effect of interventions is questionable [19, 20].

The rapidly expanding availability of mobile technologies such as wearable devices and smartphones makes up limitations above and provides an opportunity to deploy interventions on a broader, low-cost scale [21]. In particular, WeChat (the Chinese version is Weixin), as a representative form of modern messaging software, reaching 1058 million active users, has been used to healthy behavior modifications and already shown potential impacts [22, 23]. It has been demonstrated that

using the WeChat app for follow-up visit was time-effective, cost-effective, and convenient [24].

Besides, latest researches have highlighted two features important for behavior change: (i) Social Incentive; (ii) Gamification. Social incentives, or the influences that motivate individuals to adjust their behaviors based on social networks, is ubiquitous and is an effective way to increase engagement and stimulate the long-term health behavior changes [21, 25]. There is a recent call for studies on the potential uses of social engagement strategies in promoting health published by the *New England Journal of Medicine* [25]. The latest randomized systematic review also suggested that the intervention group with increased social incentives such as peer support and mutual encouragement was more significant change than the control group in healthy behaviors [26].

Additionally, gamification, the application of game design elements such as points and levels in non-game contexts, in order to enhance the interest of context, is increasingly being used to promote changes in healthy behaviors, especially PA [21, 27]. A randomized controlled trial published in *JAMA Internal Medicine* tested the effectiveness of gamification-based design in improving and maintaining healthy behavior [28]. Besides, gamification-based design not only improve the healthy behaviors after intervention, it has also a positive effect on long-term maintenance.

Social incentives in combination with gamification interventions can make up the limitation of SE intervention. However, so far little research has done to combine SE intervention with gamification and social incentives to improve metabolic health.

Therefore, we propose a randomized controlled trial of a 'S&G exercise intervention package' among obese and overweight children. The intervention package includes intervention designs based on integrated social incentives and gamification theory, involving targeted essential volume and intensity of activity (skipping rope) as well as monitoring daily information and providing healthy advice by WeChat.

The aims of this study are twofold. First, the randomized controlled trial targeted obese and overweight children, is to assess the effectiveness of a 'S&G exercise intervention' to improve metabolic health. The second aim is to test the effect of this innovative exercise intervention on healthy behaviors changes such as PA, diet, sleep health and screen media use, which are significantly associated with healthy behaviors and health status in their adulthood. We hypothesize that the intervention will improve metabolic health and unhealthy behaviors in obese children. Furthermore, it will make a significant contribution to childhood health research and practice by developing a novel intervention model to promote metabolic health and healthy behaviors among obese children.

Methods/design

Study design

This protocol describes the setting of a 6-months intervention period and 12-months follow-up period assessing the impact of a ‘S&G exercise intervention package’ (targeted an intervention integrated social incentive theory and gamification theory with a smart phone app as support) on improving metabolic health in overweight and obese children. Participants were randomly assigned to either an intervention or a control group. The complete process is outlined in Fig. 1.

Ethics approval

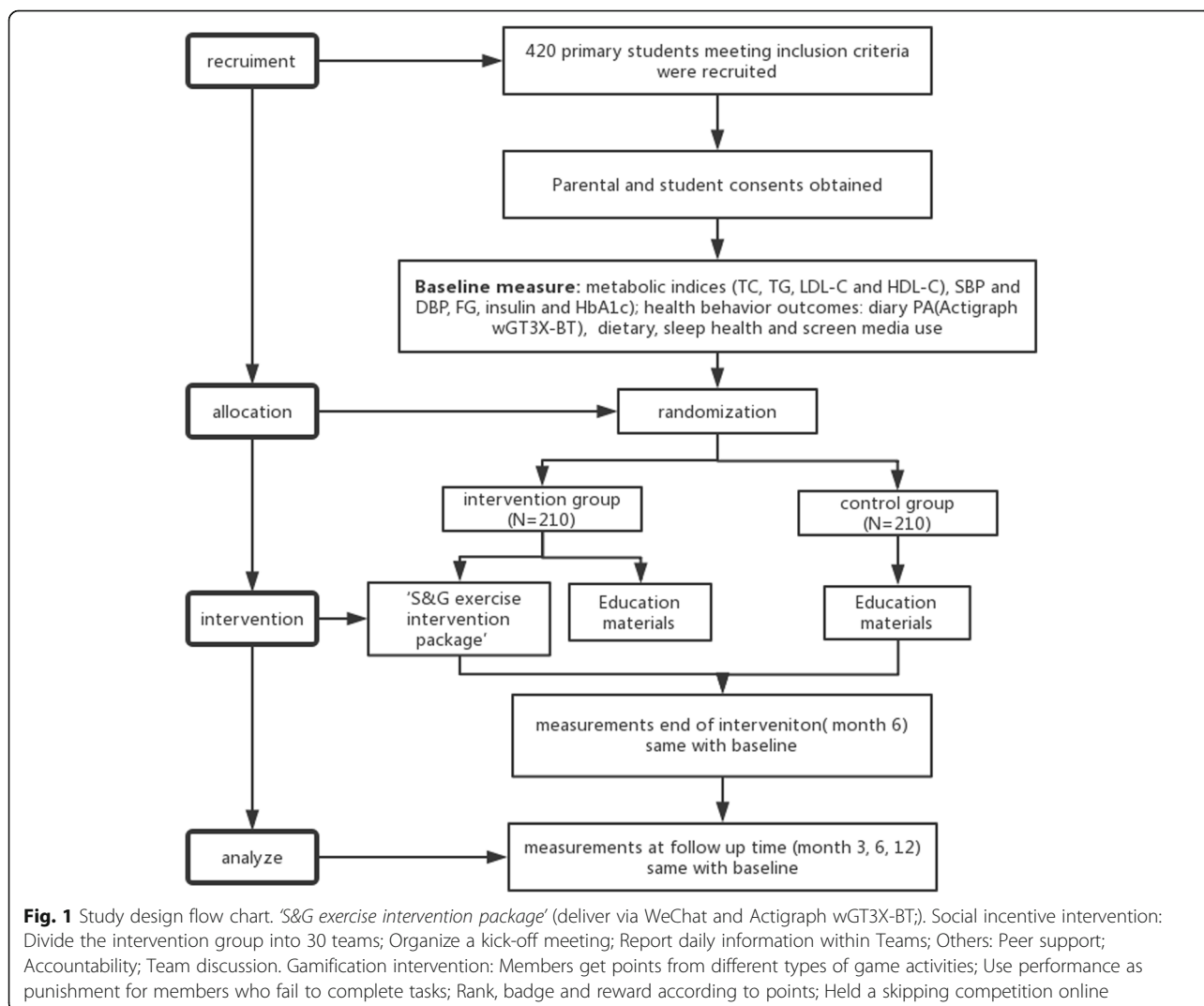
The study protocol was approved by the Ethics Committee of Shanghai Jiaotong University School of Medicine (SJUPN- 201813). This research is supported by the National Natural Science Foundation of China (71804110).

Sample size consideration

Based on the relative studies on exercise intervention with obese children [29], the sample size required for each group was estimated to be about 175 with a power of 80%, an α of 0.05, and assumed an effect size of 0.30. Therefore, a total of 350 children are need. To account for 20% loss-to-follow-up, a total of 420 children will be recruited.

Recruitment and consent

Participants will be recruited randomly from primary schools in Shanghai. We will send invitation letters to primary schools. Before confirming their participation in the study, the study team will arrange a briefing session with the representatives of both school and parent interesting in participating to outline the study protocol. After confirmation of their participation, a total of six schools will be randomly selected.



Eligible individuals, accompanied by their parents, will be provided with consent forms including blood sample collection and physical examination before participating in the study.

Inclusion criteria

Children are eligible for the study participation if they meet the following inclusion criteria.

- (1) overweight or obese: according to the China school age children and adolescents overweight and obese BMI screening standard published by the Working Group on Obesity in China (WGOC) (see Table 1) [30]
- (2) abnormal metabolic indicators: having any one of the following indicators defined mainly according to the criteria of the International Diabetes Federation (IDF 2007) adapted for children and adolescents [31]
 - 1) fasting glucose (FG) ≥ 5.6 mmol/L
 - 2) systolic blood pressure (SBP) ≥ 130 mmHg and/or diastolic blood pressure (DBP) ≥ 85 mmHg or was diagnosed with hypertension
 - 3) HDL-cholesterol < 1.03 mmol/L, HDL cholesterol (boy) < 1.03 mmol/L, HDL cholesterol (girl) < 1.29 mmol/L
 - 4) triglycerides (TG) ≥ 1.7 mmol/L
 - 5) elevated HbA1c defined as 5.7–6.4% according to the 2010 American Diabetes Association (ADA) criteria [32]

Exclusion criteria

Participants are excluded if they are already participating in an exercise program, have been told not to exercise by a physician, have secondary obesity or metabolic abnormalities caused by hypothyroidism, injury of hypothalamus and so on, take medication that affects metabolism within 3 months before intervention, or if there is

reason that participation is unsafe or infeasible for the individual.

Randomization

The study will use stratified random sampling, and the random sequence of primary schools will be computer generated. Specifically, it stratified by school district, grades and size in each center. All of the children in the selected primary schools of different grades were invited to participate in the study.

After both parents and children written informed consent have been obtained, it will be allocated into either an intervention or control group in a 1:1 ratio. Neither the study team nor the participant knew the group allocation prior to the start of the intervention program.

Control group

The children in the control group will not receive a 'S&G exercise intervention package' but will receive and wear wearable devices-Actigraph wGT3X-BT (Pensacola, FL) accelerometers. Research assistants will send helpful nutritional and exercise tips via WeChat message.

Intervention

We used WeChat as the social media platform to carry out the intervention. A WeChat group is created for each group by the investigators. The intervention group will receive skipping rope plus the 'gamification exercise package'. Data will be collected five times: at baseline, at end of intervention period, in the follow-up time at months 3,6,12.

Nominated helpers-parents

Children can nominate their parents to be an official helper. The official helper will represent children and

Table 1 Summary of outcome measures

Outcome	Item	Device
<i>Primary outcomes</i>		
Metabolic indices	Fasting glucose, triglyceride, total cholesterol, HDL-C, LDL-C, insulin, HbA1c and blood pressure	Blood analyze and blood pressure measurement
<i>Secondary outcomes</i>		
Healthy behavior	Diary PA	Accelerometer (Actigraph wGT3X-BT; 7 consecutive days, 24 h/day); IPAQ-A questionnaire
	Diet	DSQ (Dietary Screener Questionnaire)
	Sleep health	Accelerometer (Actigraph wGT3X-BT; 7 consecutive days, 24 h/day); PSQI questionnaire
	Screen media use	Self-designed questionnaire
Anthropometric	BMI, height, weight, waist circumference, body fat rate and muscle mass	Physical examination

DSQ Dietary Screener Questionnaire, PSQI The Pittsburgh Sleep Quality Index, IPAQ-A International Physical Activity Questionnaire

report daily information to the WeChat group. Children lack willpower and this way also may have potential benefits for children via increased support and motivation.

Exercise protocol

There is strong scientific evidence that exercise substantially have well-documented health benefits including reducing metabolic disease risk and body fatness [12]. To achieve these benefits, WHO recommends that the level of exercise for a 5–17-year old is 60 min per day at moderate-to-vigorous intensity level.

The skipping rope was chosen as the main form of exercise intervention because it adopts the high popularity and acceptance among Chinese primary school students, as it was set to be tested by The State Education Bureau of China. Moreover, the skipping rope meet the WHO exercise recommendation for children and benefit for child growth. Additionally, considering the condition that pupil in shanghai primary school have physical education class which lasts 45 min every day, so we decide to set the volume of exercise as rope skipping for 1000 (approximately 10–15 min) per day.

Previous review indicate that no less than 6 months of intervention was the most effective duration, so the project is consisting of a 6-month intervention period and a 12-month follow-up period.

'S&G exercise intervention package'

The intervention lasts for six months. It will be delivered via a smartphone app (WeChat) and an Actigraph wGT3X-BT. Several behavioral change theories will guide the intervention, including Social Incentive Theory and Gamification Theory.

Social incentive intervention design

Previous research has found that a combination of individuals and teams could increase participants' engagement [33]. Peer support, accountability and team discussion also has been proved to enhance social incentives [34]. Thus the intervention will add these features to promote enduring involvement:

1. **Grouping:** In order to enhance social incentives, WeChat groups are established respectively for the intervention group and the control group by the investigators. The intervention group will be divided into 30 teams involving 6–7 members according to BMI, age and sex. Because a pilot study has showed that one group within 5–6 members had the best partner interaction [35].
2. **A kick-off meeting:** After randomization, a kick-off meeting will be organized by the investigators and all participants in the intervention group will be asked to attend. In the meeting, the investigators

will introduce the intervention protocol and ensure teammates fully understand what they need to do. Then, each team will perform several interactions to foster familiarity and cohesion among their teammates, as well as elect their team leader. A kick-off meeting can increase effective and positive interaction in social groups and promote engagement as well as motivation [36].

3. **Daily Report within Teams:** Parents urge the children to skip rope every day and report the daily information (include: data recorded by Actigraph wGT3X-BT; 'whether the number of rope skipping reach the standard') to their team WeChat group before 22:30 PM on the day.
4. **Peer Support:** Each day teammates (the family who represent child) develop at least one interaction in the WeChat group. Praising teammates who reach the standard and encourage those who don't reach (e.g., 'Doing well and keep going.') are also required. Criticism and ridicule, which might cause negative reactions, are not allowed.
5. **Accountability:** Team leader responsibility system is implemented in the group. The team leader is responsible for reminding their members to complete daily task and send "PS" (the abbreviation of peer support). The team leader rotates once every month for fairness.
6. **Team discussion:** Healthy tips will be posted by the study team in each group every Friday. Participants will be guided to read it and communicate with teammate on their gains as well as barriers of the program.

Gamification intervention design

Points, ranking, badges, punishment and reward are typical elements of gamification, and have been confirmed as effective techniques to improve the interest, incentive and purposiveness of non-game programs [27, 37]. They will be used within the intervention, and to encourage frequent use and support ongoing engagement of both participants and helpers. The detail elements are as follows:

1. **Points:** Each week, the members and teams will be rewarded for the successful accomplishment of specified activities. The activity consists of four parts, including peer support, daily report, the weekend competition and tip reading. Different types of activities will result in different pinots. For example, if an individual reports daily information on time, he or she would earn 5 points per day; reading tips earn 5 points per day. If they take part in the competition on weekend, earn 20 points. The points leaderboard see Fig. 2.




ID	Peer support (5 points/Day, 35 points/ Week)	Daily report (5 points/Day, 35 points/ Week)	Tip reading (5 points/Day, 35 points/ Week)	The weekend competition (20 points/ Week)	Total score	Rank	Badge	
1	Fang Yue	5	5	5	20	120	1	
		5	5	5				
		5	5	5				
		5	5	5				
		5	5	5				
		5	5	5				
2	Shao Cenyin	5	5	5	20	105	2	
		5	5	5				
		5	5	5				
		5	5	5				
		5	5	5				
		5	5	5				
3	Qian kun	5	5	5	0	90	3	
		5	5	5				
		5	5	5				
		5	5	5				
		5	5	5				
		5	5	5				
4								
5								
6								

Fig. 2 Template for the points leaderboard. Ranking was determined by total points. All participants could access the leaderboard to see their ranking and badges in comparison with all others

- Ranking: Each week, every member in a team and all teams will be ranked according to the final points, and ranking will be announced every Sunday.
- Badges: Different points set different badges. It is suitable for both teams and individuals. All will begin in the bronze level. Higher levels include silver, gold, and platinum. The example sees Fig. 3. The higher the point, the higher the level. In addition, the advanced individuals award the certificates to motivate and encourage all participants to compete with one another.
- Punishment: If a member does not finish daily task (or forget to do), the person will be asked to do some performances in WeChat group such as posting a voice messages of song, a standup comedy, or a dance video. Besides, if team leader fails to urge teammate on time, the leader also need to perform. Utilizing performance as punishment is an original design and it could not only urge participants to follow the rules yet avoid embarrassment, but also improving compliance.
- Rewards: Once a month, each member of the team that accumulated the highest points will be



Fig. 3 The example of the badges

rewarded with a diploma. Besides, the team which get high point will be rewarded corresponding badges as their WeChat group name and it will be showed in a leaderboard.

6. Competition: Every weekend, each team will hold a skipping competition online (or offline for their convenient) in order to stimulate the teammates to engage in teamwork. The content is the number of rope skipping in one minute. All members will participate in the competition in principle, and the one who does best or the team which get the highest score at rope skipping will be rewarded with a virtual certificate, respectively. In addition, each team will calculate the per capita number for ranking.

Message and feedback

Participants have regular contact with the study team each week via WeChat message to ascertain if there are any difficulties such as changing exercise habits and how they are uploading the information. These messages are structured and standardized, and all participants in the intervention group receive the same message. The contents of these messages are composed using motivational language and feedback is encouraged which is recorded to help assess compliance with the intervention.

Outcome measures and measurement procedures

A full list of measurable outcomes is presented in Table 1. Participants will be assessed at baseline, at end of intervention period, in the follow-up time at months 3,6,12. Assessment will be undertaken by an experienced research health workers from primary school and Shanghai children's hospital. All staff involved in data collection will be given training in study procedures before the study.

1. Biomarkers: We will use a basic panel of tests to evaluate a comprehensive metabolic profile using overnight fasting blood draw. After an overnight fast of at least 10 h, 5 ml venous blood samples will be taken from the antecubital vein and collected for measuring biochemical parameters [38]. All biochemical analyses on blood will be carried out at a validated biomedical analyses laboratory. Fasting glucose, triglyceride, total cholesterol, HDL-C, and LDL-C were analyzed. Insulin resistance will be estimated using the homeostasis model assessment of insulin resistance (HOMA-IR) = (fasting insulin (FI) x fasting glucose (FG))/22.5, and insulin β cell base secretion index (HOMA- β) = $20 * FI / (FG - 3.5)$ [39].
2. Anthropometric measures: We will measure height, weight, waist circumference and muscle mass via Tanita BC-420 body composition analyzer. BMI (kg/m^2) is the standard diagnostic tool to assess

obesity and overweight in the children and will be calculated as body weight (kg) divided by the square of height (m). Height will be measured using a Seca Leicester Height Measuring Stadiometer, with participant facing forward, wearing no shoes and with their head in the Frankfort Plane (parallel to the floor). Measurements will be recorded once, in cm, to one decimal point. Weight will be measured, in the absence of shoes, using Tanita HD 352 High-Capacity Low-Profile Electronic Weighing Scales. Scales will be calibrated before first use. Weight will be recorded once, in kg, to one decimal point. Waist circumference will be measured using a 2 m flexible tape measure with buckle, around the mid-point between the iliac crest and inferior margin of the lower rib. Muscle mass will also be measured. Blood pressure will be measured at least 2/3rd of upper arm using appropriate sized cuff encircling, and at two times: initially after sitting quietly for 10 min, then again after 2 min using Mercury sphygmomanometer (model XJ11D, China).

3. Health behavioral outcome measurements: The daily PA, screen media use, dietary behaviors and sleep health will be assessed.

The daily PA assessment including direct measures and indirect measures. For direct measures, daily PA will be measured using Actigraph wGT3X-BT accelerometers, which can provide objective as well as accurate measurement, and a valid and reliable estimate of PA in young people [15, 40]. Children will be instructed to wear the accelerometer on the non-dominant wrist for 7 days during waking hours (except during water-based activities) [41, 42] to measure duration, intensity and frequency of activity. To collected data of types of daily PA, self-administered Short form of International Physical Activity Questionnaire (IPAQ-A) will be used to subjectively measure daily PA. IPAQ-A is designed for large-scale research surveillance of adolescent PA [43]. Main questions in IPAQ-A assess PA habits by frequency; includes questions specific to school-related PA: during physical education, recess, at lunchtime, right after school, and evening and past weekend physical activities.

Additionally, questionnaires were designed to collect data about time of screen media use and dietary behaviors. Parents, guided by the study team, will report the number of minutes per day of screen media use (e.g., television, mobile electronic devices, video games and computers). Diet will be measured by a validated Dietary Screener Questionnaire (DSQ), a 26-item questionnaire which asks about the frequency of consumption in the past month of selected foods and drinks for children [44].

Assessment of sleep health will include both objective sleep parameters (total sleep time, sleep onset latency,

sleep efficiency, and wake after sleep onset) and subjective parameters (sleep quality). Objective sleep parameters will be assessed using an accelerometer (Actigraph wGT3X-BT) for 7 consecutive days, 24 h/day. The Pittsburgh Sleep Quality Index (PSQI) was used to assess the subjective sleep quality and disturbances over a month time interval. It contains 18 items, generating seven scores, through the sum of score to assess the sleep quality. The higher the score, the worse the sleep quality [45].

Project management and participant tracking

We developed an official WeChat account, and create 30 WeChat group. All parents of children download the app (WeChat) free of charge and create a unique identifying username.

Before the intervention starts, each WeChat team will be allocated a project staff from the study team. Under the direct leadership of the project director, project staffs will be responsible for: 1) tracking team members to ensure that all necessary data are collected in a timely fashion; 2) providing timely and relevant feedback to the study team; and 3) sending education materials to the WeChat team.

Statistical analyses

Descriptive statistics will be calculated using mean (SD) for continuous variables and n (%) for categorical variables. Differences will be compared using independent t-tests for continuous variables (e.g., blood sample outcomes) and Chi-squared tests for categorical variables (e.g., education and household income of parents). Linear mixed models will be used to test for group differences on the main outcome variables at follow-up visits, while subject ID will be random effect, the main effect include time, treatment group, and the interaction between time and treatment. We will include covariates that are not balanced between two groups into the model. Data will be entered and cleaned with Epi-Data 3.0, and managed and analyzed using SPSS 24.0 and SAS. Statistical significance will be set at $P < 0.05$.

Discussion

An novel exercise intervention ('S&G exercise intervention') with WeChat as support, based on social incentives and gamification design, as well as ensuring intensity and dose of exercise, may have potential to improve metabolic health and even change unhealthy behaviors for long-term. In a randomized controlled trial design, the present study will assess the effectiveness of a 'S&G exercise intervention' to improve metabolic health and unhealthy behaviors.

The prevalence and severity of childhood obesity and metabolic abnormality in worldwide have increased [1, 31], which may lead to CVD and type 2 diabetes in adulthood [9, 10]. How to address it becomes an important demand

worldwide. At present, several randomized controlled studies has proved that supervised exercise can improve metabolic risk factors, but once the supervised exercise is stopped, the health benefits weaken or vanish, and the exercise interventions also suffer from high-cost and small scale [46]. Remarkably, recent researches have suggested that social incentive and gamification were used in health interventions and have a potential effect on long-term maintenance [25, 47]. Moreover, WeChat also can provide an appropriate platform to deploy interventions on a broader, low-cost scale. Therefore, providing low cost, scalable and the long-term effective interventions to reduce metabolic risks among obese children becomes available.

To our knowledge, 'S&G exercise intervention' was the first time to be designed, which make up traditional supervised exercise (SE) intervention limitation, and it can increase engagement as well as sustain exercise interventions effects on low cost, larger scale. Moreover, this study is not only targeted the effect of reduction of health outcomes including obesity and metabolic disorder, but also focused on healthy behavior changes including daily PA, diet pattern, sleep health and screen media use, which are significantly associated with health behaviors and health status in their adulthood. Hence, this study can also make a significant contribution to health research and practice by developing a new intervention model to promote unhealthy behaviors among obese children.

We predicted that this innovative exercise intervention ('S&G exercise intervention package') will develop improvements in metabolic health and unhealthy behaviors among obese children. We believed that this study could explore a low-cost, easy-to-popularize, and effective exercise intervention model for improving metabolic health and promote healthy among obese children. Furthermore, it will also provide important evidence for guidelines to prevent and improve metabolic health and health behaviors.

Abbreviations

ADA: American Diabetes Association; BMI: Body mass index; CVD: Cardiovascular disease; DBP: Diastolic blood pressure; DSQ: Dietary Screener Questionnaire; FG: Fasting glucose; FI: Fasting insulin; HbA1c: Glycated (glycosylated) hemoglobin; HDL: High-density lipoprotein; HOMA-IR: Homeostatic Model Assessment for Insulin Resistance; HOMA-β: Homeostatic Model Assessment for β; IDF: International Diabetes Federation; IPAQ-A: Short form of International Physical Activity Questionnaire; PA: Physical activity; PSQI: The Pittsburgh Sleep Quality Index; SBP: Systolic blood pressure; SD: Standard deviation; SE: Supervised exercise; TG: Triglycerides; WGOC: Working Group on Obesity in China; WHO: World Health Organization

Acknowledgements

The authors would like to thank Huigang Liang at East Carolina University and Mengyun Luo at University of Sydney for their assistance in conducting the study.

Funding

This research was supported by the National Natural Science Foundation of China, grant number 71804110. The funder has no role in the study design, collection, management, analysis or interpretation of data or writing of this report.

Availability of data and materials

Not applicable.

Authors' contributions

YF, MX and ZZ participated in the conception, design, and writing of the study protocol. YM contributed to the revision and editing of the study protocol. SZ and DM helped in interventions protocol design. All authors read and approved the final manuscript.

Ethics approval and consent to participate

The study protocol was approved by the Ethics Committee of Shanghai Jiaotong University School of Medicine (SJUPN- 201813). Written informed consent will be obtained from all participants and their parents' representatives.

Consent for publication

Not applicable.

Competing interests

The authors declare that they have no competing interests.

Publisher's Note

Springer Nature remains neutral with regard to jurisdictional claims in published maps and institutional affiliations.

Author details

¹School of Public Health, Shanghai Jiao Tong University, Shanghai 200025, China. ²Division of Preventive and Behavioral Medicine, Department of Medicine, University of Massachusetts Medical School, Worcester, MA 01655, USA. ³Scarsdale High School, Scarsdale, NY 10583, USA.

Received: 17 April 2019 Accepted: 16 May 2019

Published online: 03 June 2019

References

- Franks PW, Hanson RL, Knowler WC, Sievers ML, Bennett PH, Looker HC. Childhood obesity, other cardiovascular risk factors, and premature death. *N Engl J Med*. 2010;362(6):485–93.
- Geiss HC, Parhofer KG, Schwandt P: parameters of childhood obesity and their relationship to cardiovascular risk factors in healthy prepubescent children. *Int J Obes Relat Metab Disord*. 2001;25(6):830–7.
- Herouvi D, Karanasios E, Karayianni C, Karavanaki K. Cardiovascular disease in childhood: the role of obesity. *Eur J Pediatr*. 2013;172(6):721–32.
- Karnik S, Kanekar A. Childhood obesity: a global public health crisis. *Int J Prev Med*. 2012(1):3, 1–7.
- Wang Y, Lobstein T. Worldwide trends in childhood overweight and obesity. *Int J Pediatr Obes*. 2006;1(1):11–25.
- Dong Y, Jan C, Ma Y, Dong B, Zou Z, Yang Y, Xu R, Song Y, Ma J, Sawyer SM, et al. Economic development and the nutritional status of Chinese school-aged children and adolescents from 1995 to 2014: an analysis of five successive national surveys. *Lancet Diabetes Endocrinol*. 2019;7(4):288–99.
- Zhang J, Li X, Hawley N, Zheng Z, Zou Z, Tan L, Chen Q, Shi H, Zhao H, Zhang Z. Trends in the prevalence of overweight and obesity among Chinese school-age children and adolescents from 2010 to 2015. *Child Obes*. 2018;14(3):182–8.
- Chen Y, Ma L, Ma Y, Wang H, Luo J, Zhang X, Luo C, Wang H, Zhao H, Pan D, et al. A national school-based health lifestyles interventions among Chinese children and adolescents against obesity: rationale, design and methodology of a randomized controlled trial in China. *BMC Public Health*. 2015;15(1):210.
- Godfrey KM, Gluckman PD, Hanson MA. Developmental origins of metabolic disease: life course and intergenerational perspectives. *Trends Endocrinol Metab*. 2010;21(4):199–205.
- Varma MC, Kusminski CM, Azharian S, Gilardini L, Kumar S, Invitti C, McTernan PG. Metabolic endotoxaemia in childhood obesity. *BMC obesity*. 2015;3:3.
- Bereket A, Atay Z. Current status of childhood obesity and its associated morbidities in Turkey. *J Clin Res Pediatr Endocrinol*. 2012;4(1):1–7.
- Physical Activity Guidelines Advisory Committee report, 2008. To the secretary of health and human services. Part a: executive summary. *Nutr Rev* 2009, 67 (2):114–120.
- Lee IM, Shiroma EJ, Lobelo F, Puska P, Blair SN, Katzmarzyk PT. Effect of physical inactivity on major non-communicable diseases worldwide: an analysis of burden of disease and life expectancy. *Lancet*. 2012;380(9838):219–29.
- Sun C, Pezic A, Tikellis G, Ponsonby A, Wake M, Carlin JB. Effects of school-based interventions for direct delivery of physical activity on fitness and cardiometabolic markers in children and adolescents: a systematic review of randomized controlled trials. *Obes Rev*. 2013;14(10):818–38.
- Baskerville R, Ricci-Cabello I, Roberts N, Farmer A. Impact of accelerometer and pedometer use on physical activity and glycaemic control in people with type 2 diabetes: a systematic review and meta-analysis. *Diabet med*. 2017;34(5):612–20.
- Ruotsalainen H, Kyngas H, Tammelin T, Kaariainen M. Systematic review of physical activity and exercise interventions on body mass indices, subsequent physical activity and psychological symptoms in overweight and obese adolescents. *J Adv Nurs*. 2015;71(11):2461–77.
- Kennedy AB, Lavie CJ, Blair SN. Fitness or fatness: which is more important? *Jama*. 2018;319(3):231–2.
- Poitra VJ, Gray CE, Borghese MM, Carson V, Chaput JP, Janssen I, Katzmarzyk PT, Pate RR, Connor Gorber S, Kho ME, et al. Systematic review of the relationships between objectively measured physical activity and health indicators in school-aged children and youth. *Appl Physiol Nutr Metab*. 2016;41(6 Suppl 3):S197–239.
- Garcia-Hermoso A, Sanchez-Lopez M, Martinez-Vizcaino V. Effects of aerobic plus resistance exercise on body composition related variables in pediatric obesity: a systematic review and meta-analysis of randomized controlled trials. *Pediatr Exerc Sci*. 2015;27(4):431–40.
- Jansen W, Raat H, Zwanenburg EJ, Reuvers I, van Walsem R, Brug J. A school-based intervention to reduce overweight and inactivity in children aged 6–12 years: study design of a randomized controlled trial. *BMC Public Health*. 2008;8:257.
- Patel MS, Benjamin EJ, Volpp KG, Fox CS, Small DS, Massaro JM, Lee JJ, Hilbert V, Valentino M, Taylor DH. Effect of a game-based intervention designed to enhance social incentives to increase physical activity among families: the BE FIT randomized clinical trial. *JAMA Intern Med*. 2017;177(11):1586–93.
- He C, Wu S, Zhao Y, Li Z, Zhang Y, Le J, Wang L, Wan S, Li C, Li Y, et al. Social media-promoted weight loss among an occupational population: cohort study using a WeChat Mobile phone app-based campaign. *J Med Internet Res*. 2017;19(10):e357.
- Tencent Released Its Financial Report of the first half year in 2018 [<http://tech.qq.com/a/20180815/054575.htm>]. Accessed 15 Aug 2018.
- Lyu KX, Zhao J, Wang B, Xiong GX, Yang WQ, Liu QH, Zhu XL, Sun W, Jiang AY, Wen WP, et al. Smartphone application WeChat for clinical follow-up of discharged patients with head and neck tumors: a randomized controlled trial. *Chin Med J*. 2016;129(23):2816–23.
- Asch DA, Rosin R. Engineering social incentives for health. *N Engl J Med*. 2016;375(26):2511–3.
- Schoeppe S, Alley S, Van Lippevelde W, Bray NA, Williams SL, Duncan MJ, Vandelanotte C. Efficacy of interventions that use apps to improve diet, physical activity and sedentary behaviour: a systematic review. *Int J Behav Nutr Phys Act*. 2016;13(1):127.
- Brown M, O'Neill N, van Woerden H, Eslambolchilar P, Jones M, John A. Gamification and adherence to web-based mental health interventions: a systematic review. *JMIR mental health*. 2016;3(3):e39.
- Patel MS, Benjamin EJ, Volpp KG, Fox CS, Small DS, Massaro JM, Lee JJ, Hilbert V, Valentino M, Taylor DH, et al. Effect of a game-based intervention designed to enhance social incentives to increase physical activity among families: the BE FIT randomized clinical trial. *JAMA Intern Med*. 2017;177(11):1586–93.
- Dobbins M, Husson H, DeCorby K, LaRocca RL. School-based physical activity programs for promoting physical activity and fitness in children and adolescents aged 6 to 18. *Cochrane Database Syst Rev*. 2013;(2):CD007651.

30. Force GOCOT. Body mass index reference norm for screening overweight and obesity in Chinese children and adolescents. *Chin J Epidemiol.* 2004; 25(2):97.
31. Zimmet P, Alberti G, Kaufman F, Tajima N, Silink M, Arslanian S, Wong G, Bennett P, Shaw J, Caprio S. The metabolic syndrome in children and adolescents. *Lancet.* 2007;369(9579):2059–61.
32. Executive summary: Standards of medical care in diabetes--2010. *Diabetes care* 2010, 33 Suppl 1:S4–10.
33. Patel MS, Asch DA, Rosin R, Small DS, Bellamy SL, Eberbach K, Walters KJ, Haff N, Lee SM, Wesby L, et al. Individual versus team-based financial incentives to increase physical activity: a randomized, controlled trial. *J Gen Intern Med.* 2016;31(7):746–54.
34. Kurtzman GW, Day SC, Small DS, Lynch M, Zhu J, Wang W, Rareshide CAL, Patel MS. Social incentives and gamification to promote weight loss: the LOSE IT randomized, controlled trial. *J Gen Intern Med.* 2018;33(10):1669–75.
35. Mo D, Xiang M, Luo M, Dong Y, Fang Y, Zhang S, Zhang Z, Liang H. Using gamification and social incentives to increase physical activity and related social cognition among undergraduate students in Shanghai, China. *Int J Environ Res Public Health.* 2019;16(5):858.
36. Rhodes R, Kaos M, Beauchamp M, Bursick SK, Latimer-Cheung EA, Hernandez H, Warburton D, Ye Z, Graham TC. Effects of Home-Based Exergaming on Child Social Cognition and Subsequent Prediction of Behavior; 2018. p. 28.
37. Sailer M, Ulrich Hense J, Mayr S, Mandl H: How gamification motivates: An experimental study of the effects of specific game design elements on psychological need satisfaction, vol. 69; 2017.
38. Wang J, Zhu Y, Cai L, Jing J, Chen Y, Mai J, Ma L, Ma Y, Ma J. Metabolic syndrome and its associated early-life factors in children and adolescents: a cross-sectional study in Guangzhou, China. *Public Health Nutr.* 2016;19(7): 1147–54.
39. Matthews DR, Hosker JP, Rudenski AS, Naylor BA, Treacher DF, Turner RC. Homeostasis model assessment: insulin resistance and beta-cell function from fasting plasma glucose and insulin concentrations in man. *Diabetologia.* 1985;28(7):412–9.
40. Nathan N, Wiggers J, Bauman AE, Rissel C, Searles A, Reeves P, Oldmeadow C, Naylor P-J, Cradock AL, Sutherland R, et al. A cluster randomised controlled trial of an intervention to increase the implementation of school physical activity policies and guidelines: study protocol for the physically active children in education (PACE) study. *BMC Public Health.* 2019;19(1).
41. Zerger HM, Miller BG, Valbuena D, Miltenberger RG. Effects of student pairing and public review on physical activity during school recess. *J Appl Behav Anal.* 2017;50(3):529–37.
42. Hayes LB, Van Camp CM. Increasing physical activity of children during school recess. *J Appl Behav Anal.* 2015;48(3):690–5.
43. Lindsay AR, Hongu N, Spears K, Idris R, Dyrek A, Manore MM. Field assessments for obesity prevention in children and adults: physical activity, fitness, and body composition. *J Nutr Educ Behav.* 2014;46(1):43–53.
44. National Cancer Institute (NCI) dietary screener questionnaire in the NHANES 2009–10. [<http://appliedresearch.cancer.gov/nhanes/dietscreen/>]. Accessed 18 Feb 2018.
45. Buysse DJ, Reynolds CF 3rd, Monk TH, Berman SR, Kupfer DJ. The Pittsburgh sleep quality index: a new instrument for psychiatric practice and research. *Psychiatry Res.* 1989;28(2):193–213.
46. Chang C, Liu W, Zhao X, Li S, Yu C. Effect of supervised exercise intervention on metabolic risk factors and physical fitness in Chinese obese children in early puberty. *Obes Rev.* 2008;9:135–41.
47. Edwards EA, Lumsden J, Rivas C, Steed L, Edwards LA, Thiyagarajan A, Sohanpal R, Caton H, Griffiths CJ, Munafo MR, et al. Gamification for health promotion: systematic review of behaviour change techniques in smartphone apps. *BMJ Open.* 2016;6(10):e012447.

Ready to submit your research? Choose BMC and benefit from:

- fast, convenient online submission
- thorough peer review by experienced researchers in your field
- rapid publication on acceptance
- support for research data, including large and complex data types
- gold Open Access which fosters wider collaboration and increased citations
- maximum visibility for your research: over 100M website views per year

At BMC, research is always in progress.

Learn more biomedcentral.com/submissions

