

1 **Reduced prediction error responses in high- as compared to low-uncertainty**
2 **musical contexts**

3
4 Quiroga-Martinez, D.R.^a, Hansen N.C.^b, Højlund A.^c, Pearce M.^{a,d}, Brattico E.^a, Vuust P.^a

5
6 *a) Center for Music in the Brain, Aarhus University & The Royal Academy of music, Denmark*

7 *b) The MARCS Institute for Brain, Behaviour and Development, Western Sydney University, Australia*

8 *c) Center for Functionally Integrative Neuroscience, Aarhus University, Denmark*

9 *d) School of Electronic Engineering and Computer Science, Queen Mary University of London, UK*

10
11
12 Corresponding author:

13 David Ricardo Quiroga-Martinez

14

15 Address: Nørrebrogade 44 - Building 10G, 5th floor - 8000 Aarhus C., Denmark

16 Phone: +45 52526481

17 Email: dquiroga@clin.au.dk

18
19 Highlights:

- 20
21 • The mismatch negativity (MMNm) is reduced in musical contexts with high pitch uncertainty
22 • The MMNm reduction is restricted to pitch-related features
23 • Accuracy during deviance detection is reduced in contexts with higher uncertainty
24 • The results suggest a feature-selective precision modulation of prediction error

25
26
27 Materials, data and scripts can be found in the Open Science Framework repository:

28 http://bit.ly/music_entropy_MMN

29 DOI: 10.17605/OSF.IO/MY6TE

1 Abstract

2

3 Theories of predictive processing propose that prediction error responses are modulated by the certainty
4 of the predictive model or *precision*. While there is some evidence for this phenomenon in the visual
5 and, to a lesser extent, the auditory modality, little is known about whether it operates in the complex
6 auditory contexts of daily life. Here, we examined how prediction error responses behave in a more
7 complex and ecologically valid auditory context than those typically studied. We created musical tone
8 sequences with different degrees of pitch uncertainty to manipulate the precision of participants' auditory
9 expectations. Magnetoencephalography was used to measure the magnetic counterpart of the mismatch
10 negativity (MMNm) as a neural marker of prediction error in a multi-feature paradigm. Pitch, slide,
11 intensity and timbre deviants were included. We compared high-entropy stimuli, consisting of a set of
12 non-repetitive melodies, with low-entropy stimuli consisting of a simple, repetitive pitch pattern. Pitch
13 entropy was quantitatively assessed with an information-theoretic model of auditory expectation. We
14 found a reduction in pitch and slide MMNm amplitudes in the high-entropy as compared to the low-
15 entropy context. No significant differences were found for intensity and timbre MMNm amplitudes.
16 Furthermore, in a separate behavioral experiment investigating the detection of pitch deviants, similar
17 decreases were found for accuracy measures in response to more fine-grained increases in pitch entropy.
18 Our results are consistent with a precision modulation of auditory prediction error in a musical context,
19 and suggest that this effect is specific to features that depend on the manipulated dimension—pitch
20 information, in this case. Preprint versions available at: <https://doi.org/10.1101/422949>.

21

22 Keywords: Precision, Prediction error, Music, Mismatch Negativity, Multi-feature, IDyOM

1. Introduction

Prediction is considered a core principle for brain function. Several theories propose that the brain anticipates and explains incoming information during perception based on its own predictive model of the world (Bar, 2009; Clark, 2016; Friston, 2005; Hohwy, 2013; Rao & Ballard, 1999). When unexpected information is encountered, it generates prediction error responses that are passed forward through brain hierarchies, so that they can drive perceptual inference, learning and action (den Ouden, Kok, & de Lange, 2012; Friston, 2010). Prediction error responses are hypothesised to depend, not only on the novelty of sensory signals, but also on the *precision* of the brain's predictive model. Here we understand precision as the specificity and certainty of predictions, which can be driven both by the statistical properties of sensory signals and by internal factors such as attention. Precision is proposed to modulate the gain of prediction error responses so that they are stronger in perceptual contexts with low as compared to high uncertainty (Clark, 2013; Feldman & Friston, 2010; Hohwy, 2012). This mechanism, known as precision-weighting of prediction error, would ensure that primarily reliable perceptual contexts drive learning and behavior.

Research on predictive precision has mainly centered on the visual modality and selective attention as precision optimization (Feldman & Friston, 2010; Jiang, Summerfield, & Egner, 2013; Kok, Rahnev, Jehee, Lau, & de Lange, 2012). In the auditory domain, some studies have similarly focused on attention (Auksztulewicz & Friston, 2015; Chennu et al., 2013; Garrido, Rowe, Halász, & Mattingley, 2018; Schröger, Marzecová, & SanMiguel, 2015) and only a handful have shown how the statistical properties of the stimuli themselves can drive precision (Garrido, Sahani, & Dolan, 2013; Heilbron & Chait, 2018; Hsu, Bars, Hämäläinen, & Waszak, 2015; Sedley et al., 2016; Sohoglu & Chait, 2016; Southwell & Chait, 2018). These experiments, however, have employed very simple and artificial auditory stimuli, which limit the generality of the conclusions that can be drawn from them. As a result, it is not known how prediction error responses behave in more complex and realistic contexts. Consequently, the goal of the present study is to assess empirically whether prediction error responses are modulated by precision in a richer and more ecologically valid auditory context such as music.

Music perception provides a useful model of auditory prediction. Listeners are known to generate expectations in musical pieces, based on the statistical regularities of the context and long-term knowledge of a musical style (Huron, 2006; Pearce, 2018). The violation of these expectations generates neural prediction error responses (e.g. Carrus, Pearce, & Bhattacharya, 2013; Koelsch, Gunter, Friederici, & Schröger, 2000; Vuust et al., 2005). Interestingly, precision has been suggested to modulate musical prediction error and play an important role in the perceptual, aesthetic and emotional dimensions of musical experience (Hansen, Dietz, & Vuust, 2017; Ross & Hansen, 2016; Vuust, Witek, Dietz, & Kringelbach, 2018). Bringing empirical support to these claims, two behavioral studies have shown that listeners estimate the precision of musical expectations and that low-probability tones are judged as more unexpected in contexts with low as compared to high uncertainty (Hansen & Pearce, 2014; Hansen, Vuust, & Pearce, 2016). Nevertheless, how precision affects musical prediction error at the neural level remains unknown.

To address this question, we manipulated the precision of participants' expectations by creating realistic melodic sequences with different degrees of pitch uncertainty. This was accomplished by manipulating two dimensions: the repetitiveness and the pitch alphabet—i.e. the collection of possible pitch categories—of the sequences. Research has shown that both factors modulate the neural signatures of predictive uncertainty (Auksztulewicz et al., 2017; Barascud, Pearce, Griffiths, Friston, & Chait, 2016). As a marker of prediction error, we recorded the mismatch negativity (MMN) (Näätänen, Gaillard, & Mäntysalo, 1978), which is a well-known neural response to regularity violations in a stimulus sequence

1 (Näätänen, Paavilainen, Rinne, & Alho, 2007) with generators in the auditory and inferior frontal cortices
2 (Deouell, 2007). The MMN is taken to reflect the violation and update of neural predictive models
3 (Bendixen, SanMiguel, & Schröger, 2012; Garrido, Kilner, Stephan, & Friston, 2009; Lieder, Stephan,
4 Daunizeau, Garrido, & Friston, 2013). Some studies already hint at a precision modulation of the MMN.
5 In them, repetitive patterns are compared with random tone sequences that prevent the formation of
6 regularities (Hsu et al., 2015; Jacobsen & Schröger, 2001; Maess, Jacobsen, Schröger, & Friederici,
7 2007), revealing no MMN for the latter. In other words, a very imprecise predictive model seems to lead
8 to highly reduced prediction error responses. Perhaps for this reason, most MMN studies employ very
9 simple and repetitive stimuli, which favor the strength of the recorded signal, but fail to provide a full
10 picture of predictive processing in the rich and complex auditory environments of daily life. This is the
11 case even for musical MMN paradigms that aim at making auditory stimuli more real-sounding (e.g.,
12 Tervaniemi, Huotilainen, & Brattico, 2014; Vuust et al., 2011). Therefore, employing stimuli that are
13 more complex than in current paradigms, but at the same time less complex and more real-sounding than
14 a random succession of tones, could reveal how predictive processing and precision operate in more
15 ecologically valid settings.

16
17 The creation of more complex and realistic MMN paradigms comes with the challenge of establishing
18 regularities in constantly changing acoustic streams. However, the auditory system is capable of
19 extracting abstract features and complex relationships between sounds which give rise to an MMN when
20 violated (Paavilainen, 2013). For example, in the no-standard multifeature paradigm (Pakarinen,
21 Huotilainen, & Näätänen, 2010) deviants for different features immediately follow each other and
22 regularities are created by keeping one feature constant for a period of time while tones change in other
23 features. This suggests that features are processed independently from each other to a good extent, which
24 is the property that we exploited here. In a novel MMN paradigm, we included intensity, timbre, pitch
25 and slide deviants, and created regularities by keeping the same loudness, timbre, musical scale system
26 and pitch steadiness—as opposed to pitch glide—in the sequence, even though standard tones constantly
27 changed. Pitch deviants are of particular interest, since there was not a unique pitch height that served as
28 standard. Rather, the regularity was created by the abstract properties of musical scales (Brattico,
29 Tervaniemi, Näätänen, & Peretz, 2006), which constitute finite sets of possible pitch categories and
30 distances between consecutive tones (i.e. intervals). Therefore, our pitch deviants consisted of out-of-
31 tune sounds that fall outside the musical scale of reference (see section 2.1.2. for more details).
32 Furthermore, the described feature independence is interesting because we manipulated precision only
33 in the pitch dimension—by changing the number of possible pitch heights and intervals and their
34 repetitiveness—while features such as intensity and timbre kept the same simple predictive model, with
35 only one deviant and one standard value across conditions. In consequence, our multifeature paradigm
36 provided an opportunity to explore the extent to which precision in one auditory dimension affects
37 predictive processing in other auditory dimensions.

38
39 In the present study, we conducted separate neurophysiological and behavioral experiments to determine
40 whether auditory prediction error is modulated by precision during listening to musical sequences. In the
41 neurophysiological experiment, we used magnetoencephalography (MEG) to record magnetic mismatch
42 responses (MMNm) to pitch, intensity, timbre and slide deviants in high-entropy (HE) and low-entropy
43 (LE) contexts. The LE context consisted of an adapted version of the simple and repetitive musical multi-
44 feature paradigm (Vuust et al., 2011) (see section 2.1.2. for more details), whereas the HE context
45 consisted of a set of novel non-repetitive melodies. Entropy was quantitatively characterized with a
46 computational model of auditory expectation (see section 2.1.2.1). In line with a precision modulation of
47 prediction error, we expected reduced—but still present—MMNm amplitudes for the HE as compared
48 to the LE context. Moreover, in exploratory analyses we addressed the possibility that different features
49 were affected by pitch entropy in different ways, thereby providing a first investigation of the feature-

1 selectivity of the effect. In the behavioral experiment, we asked participants to detect pitch deviants
2 introduced in several tone sequences, and to report the confidence of their responses. This experiment
3 had two aims. The first was to assess behaviorally the putative precision modulation of the MMNm. The
4 second was to determine whether listeners are sensitive to fine-grained manipulations of precision. For
5 this reason, we employed stimuli with five degrees of entropy, which included a subset of the HE/LE
6 stimuli used in the MEG experiment and three additional conditions with intermediate entropy levels.
7 We expected lower accuracy and confidence ratings as the entropy of the melodic sequences increased.

8 9 2. Materials and Methods

10
11 The data, code and materials necessary to reproduce the reported experiments and results are available
12 at http://bit.ly/music_entropy_MMN; DOI 10.17605/OSF.IO/MY6TE.

13 2.1. MEG experiment

14 15 2.1.1. Participants

16
17 Twenty-four right-handed and neurologically healthy non-musicians (13 women, mean age 27, range 19-
18 34) took part in the experiment. The sample size was chosen to be similar to a previous study using the
19 same MEG scanner in which relatively small within-subjects differences were identified (Hansen,
20 Højlund, Møller, Pearce, & Vuust, 2019). Musical expertise was measured with the musical training
21 subscale of the Goldsmiths Musical Sophistication Index (Gold-MSI) questionnaire, which has been
22 validated in a very large sample ($n=147,636$) (Müllensiefen, Gingras, Musil, & Stewart, 2014). The mean
23 score was 10.3 ($SD = \pm 3.5$) and all scores lay in the 26th percentile of the norm for the subscale.
24 Moreover, participants' musical competence was assessed with the Musical Ear Test (MET), which has
25 been shown to accurately discriminate between musicians and nonmusicians (Wallentin, Nielsen, Friis-
26 Olivarius, Vuust, & Vuust, 2010). The test yielded a total score of 69.12 ($SD = \pm 9.58$), which falls
27 within normal values for this population (Wallentin et al., 2010). Participants were recruited through an
28 online database for experiment participation, agreed to take part voluntarily, gave their informed consent
29 and received 300 Danish kroner (approximately 40 euro) as compensation. The data from all participants
30 were included in the analyses, since reliable auditory responses were identified in all cases, which was
31 our predefined inclusion criterion. The study was conducted in accordance with the Helsinki declaration
32 and was approved by the regional ethics committee (De Videnskabetiske Komitéer for Region
33 Midtjylland in Denmark).

34 35 2.1.2. Stimuli

36
37 High-entropy and low-entropy stimuli were included (Figure 1a). For the LE condition, we adapted the
38 original musical multi-feature paradigm (Vuust et al., 2011; Vuust, Brattico, Seppänen, Näätänen, &
39 Tervaniemi, 2012; Vuust, Liikala, Näätänen, Brattico, & Brattico, 2016), which consists of a four-note
40 repeating pattern (low-high-medium-high pitch) employing the notes from a major or minor chord. This
41 pattern, known as the Alberti bass, is used across musical styles (Fuller, 2001). The HE condition
42 consisted of a novel multi-feature paradigm including a set of six novel melodies which contained almost
43 no exact repetitions of pitch patterns and a larger pitch alphabet than LE. All the tones in the melodies
44 were isochronous to make both conditions directly comparable with each other and other MMN
45 paradigms (the full set of stimuli is shown in supplementary file 1). Individual tone sequences—i.e.,
46 single melodies or Alberti bass sequences—in both conditions were 32-notes long, lasted eight seconds
47 and were pseudo-randomly transposed from 0 to 5 semitones upwards to the keys comprising the major
48 and minor modes of C, C#, D, D#, E, and F. After transposition, the pitch alphabet in the HE condition

1 spanned up to thirty-one semitones from B3 ($F_0 \approx 247 \text{ Hz}$) to F6 ($F_0 \approx 1397 \text{ Hz}$). To minimize
2 acoustic confounds, we made sure that LE sequences spanned approximately the same global pitch
3 alphabet as HE sequences by transposing half of them to the octave from C4 ($F_0 \approx 262 \text{ Hz}$) to C5
4 ($F_0 \approx 523 \text{ Hz}$), and the other half to the octave from C5 to C6 ($F_0 \approx 1046 \text{ Hz}$) (supplementary figure
5 1).

6
7 Stimuli were presented using a pool of piano tones made with the “Warm Grand” sample from the Halion
8 sampler in Cubase (Steinberg Media Technology, version 8). Each tone had a duration of 250 ms, was
9 peak-amplitude normalized and had 3-ms-long fade-in and fade-out to prevent clicking. This tone
10 duration shortened stimulation time while preventing the MMN from overlapping with the onset of the
11 following tone. No gaps were introduced between consecutive sounds to create the perception of
12 continuous melodic phrases with legato articulation. We regard this as representative of how melodies
13 are played in real music. Pitch deviants consisted of out-of-tune tones falling outside the musical scale
14 of reference and were created by raising the pitch of the original tones by 50 cents. The slide deviant was
15 a continuous pitch glide which spanned the whole duration of the tone, going from two semitones below
16 towards the pitch of the corresponding standard tone. For the intensity deviant sound level was decreased
17 by 20 dB. The timbre deviant consisted of a telephone receiver effect (bandpass-filtered between 1 and
18 4 kHz). All deviants were created with Audition (Adobe Systems Incorporated, version 8).



Figure 1. Examples of the sequences used in A) the MEG experiment and B) the behavioral experiment (complete stimulus set available in the supplementary file 1 and sound examples available in the online repository). LE = low entropy, IE = intermediate entropy, HE = high entropy. Two of the conditions in the behavioral experiment (LE, HE) correspond to the conditions in the MEG experiment.

1 Each condition was presented in a separate group of three consecutive blocks. Within each block, tone
2 sequences were played one after the other without pauses. The order of HE sequences was pseudorandom
3 so that any sequence of twelve consecutive melodies contained no more than one major and minor version
4 of each. No melody was played twice in a row. Transpositions in both conditions were pseudorandomized
5 in the same way. At the beginning of each block, a sequence with no deviants was added to ensure a
6 certain level of auditory regularity at the outset. The duration of the pause between blocks was not fixed
7 but usually took around one minute.

8
9 Deviants were introduced as follows. Each 32-note sequence was divided into eight groups of four notes
10 (Figure 1a). In half of the sequences, deviants occurred in groups 1, 3, 5 and 7. In the other half, they
11 occurred in groups 2, 4, 6 and 8. This was done because we also included a combined condition where
12 HE and LE sequences were played simultaneously, thereby creating two-part musical excerpts. Thus, the
13 position of the deviants was distributed across streams to counterbalance the effects of key-changes
14 between parts. The purpose of this condition was to assess the predictive processing of simultaneous
15 musical streams, which is beyond the scope of this article. The corresponding results will be reported
16 elsewhere. Within each four-note group, only one deviant could occur randomly in any of the four
17 positions with equal probability. There was one deviant per feature in each sequence and their order of
18 appearance was pseudorandom. There were 144 sequences in each condition and the same number of
19 deviants per feature. This number was close to the minimum of 150 suggested by Duncan et al. (2009)
20 for EEG research in clinical populations. Since each deviant type occurred once per thirty-two notes, its
21 overall zeroth-order probability was $1/32 \approx 0.031$. In the session, we also included another group of three
22 consecutive blocks in which Alberti bass sequences were played in a low pitch range. This condition
23 served as a control for the combined condition and therefore is not the focus of this article either. The
24 order of this and the HE and LE conditions was counterbalanced across participants. These conditions
25 always came after the three blocks of the combined condition.

26 27 2.1.2.1. Quantitative estimates with IDyOM

28
29 To characterize quantitatively the stimuli, we used Information Dynamics of Music (IDyOM), a variable-
30 order Markov model of expectation (Pearce, 2005, 2018). IDyOM generates expectations at each point
31 of an event sequence in the form of a probability distribution (P) over the set of possible continuations
32 at that particular moment. These probabilities are conditional on the preceding context and the previous
33 long-term exposure of the model. The uncertainty of expectations is quantified in terms of Shannon
34 entropy:

$$35 \quad 36 \quad E(P) = - \sum_{p \in P} p \log_2 p$$

37
38 Since the probabilities of the possible continuations (p) sum to one, entropy is minimal when only one
39 event has a very high probability, and is maximal when all possible events are equally likely. IDyOM's
40 entropy estimates correlate with behavioral measures of uncertainty (Hansen & Pearce, 2014; Hansen et
41 al., 2016). Once the next event in the sequence appears, IDyOM estimates its unexpectedness as
42 information content (IC):

$$43 \quad 44 \quad IC_p = -\log_2 p$$

45
46 Thus, unexpected or surprising events have high IC. Here, mean entropy and mean IC values are used to
47 estimate how the statistical properties of the sequences drive listeners' predictive precision (see section

1 2.1.2.1. for further details). Our primary measure in this context is entropy, as it directly estimates
 2 precision, given that precision is the inverse of uncertainty. Thus, contexts with low entropy would
 3 generate more precise expectations than contexts with high entropy. Our secondary measure is mean IC,
 4 since stimuli with decreasing levels of precision—and thus increasing levels of entropy—would tend to
 5 yield higher levels of unexpectedness and IC in the long run. Here we consider both measures to obtain
 6 a more complete picture of the listener’s predictive model in relation to the stimuli. Note, however, that
 7 our manipulations are qualitative, and that we use IDyOM merely to characterize the uncertainty of the
 8 previously generated stimuli rather than to directly predict neural activity.
 9

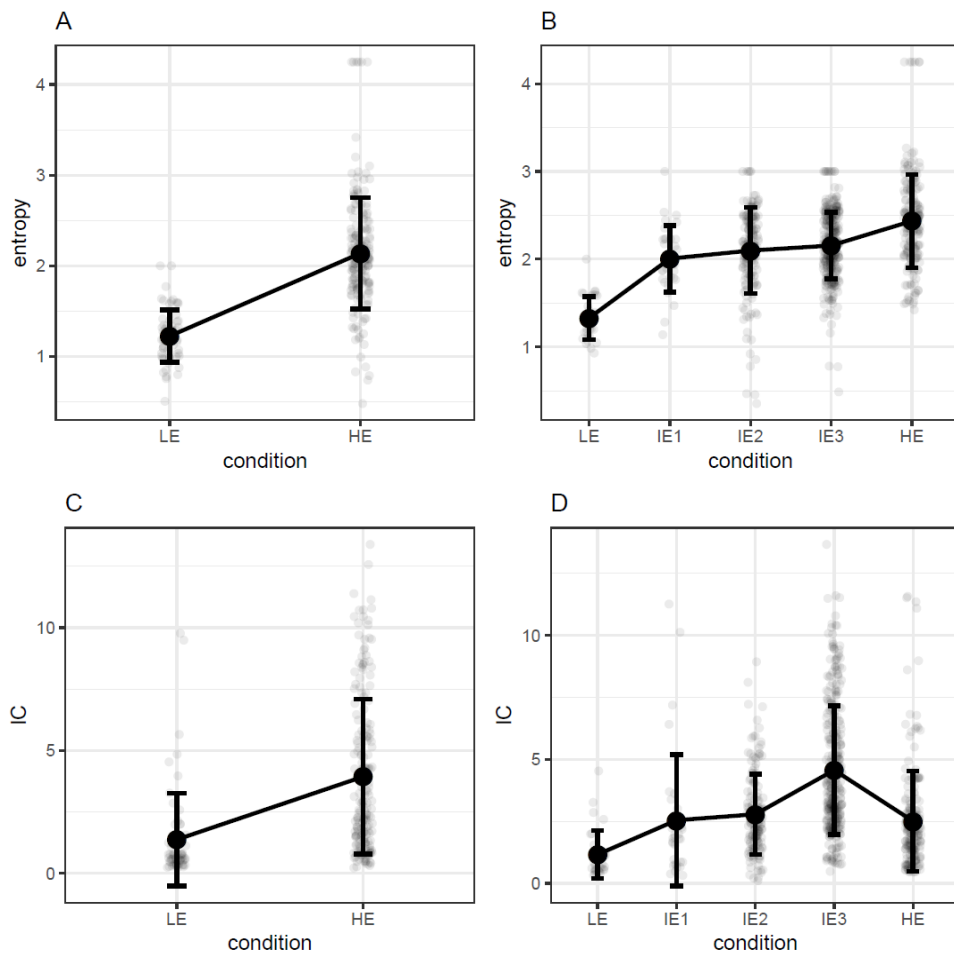


Figure 2. Entropy and information content (IC) values, in bits, measured with IDyOM for the stimuli included in the MEG (A, C) and behavioral (B, D) experiments. Error bars represent standard deviation. LE= Low entropy, IE = Intermediate entropy, HE = High entropy.

10
 11 Mean entropy and IC values were quantified using a model that combined short-term probabilities
 12 inferred from the sequences themselves with long-term probabilities learned from a corpus of Western
 13 tonal hymns and folksongs (datasets 1, 2, and 9 from Table 4.1 in Pearce 2005, comprising 50,867 notes).
 14 This corpus has been extensively used in prior research. The model simulates a listener that generates
 15 predictions based on life-long knowledge of Western tonal music, but who is also capable of learning
 16 and incorporating the structure of the current stimuli into its long-term expectations. This configuration
 17 is known as *Both+* model. IDyOM can use different parameters of the musical surface—known as
 18 viewpoints—to derive its probabilistic predictions (Conklin & Witten, 1995; Pearce, 2005). Research

1 has often used a viewpoint combining tonal scale degree (i.e. the perceived stability of a given pitch with
2 respect to its tonal context) and pitch-interval (e.g., Carrus et al., 2013; Hansen & Pearce, 2014; Omigie,
3 Pearce, Williamson, & Stewart, 2013; Pearce, Ruiz, Kapasi, Wiggins, & Bhattacharya, 2010) in order to
4 capture both melodic and tonal structure (see Pearce, 2005, for more details). This viewpoint was used
5 here to obtain note-by-note IC and entropy values, which were then averaged for each sequence and
6 condition. Crucially, IDyOM uses the pitch alphabet of the training corpus for its predictions, which in
7 this case was larger than the alphabets of our stimuli. This produces misleading estimates and makes the
8 model insensitive to differences in pitch alphabet between conditions, which have been identified as an
9 important source of uncertainty (Auksztulewicz et al., 2017; Barascud et al., 2016). For this reason, we
10 adjusted the distributions to include only the probabilities of the tones present in each condition, which
11 were then renormalized to sum to one (for non-adjusted values see supplementary figure 3). The analysis
12 revealed higher mean entropy and IC for HE than LE stimuli (Figures 2a and 2c). IC and entropy profiles
13 of all the sequences are shown in supplementary file 1.

14 2.1.3. Procedures

15
16
17 Participants received oral and written information and gave their consent. Then they filled out the Gold-
18 MSI questionnaire and completed the MET. Once participants had put on MEG-compatible clothing,
19 electrodes and coils were attached to their skin and their heads were digitized. During the recording, they
20 were sitting upright in the MEG device looking at a screen. Before presenting the musical stimuli, their
21 auditory threshold was measured through a staircase procedure and the sound level was set at 60dB above
22 threshold. Participants were instructed to watch a silent movie of their choice, ignore the sounds and
23 move as little as possible. This task minimizes the overlap of the MMN with attention-related
24 components such as the P300 (Duncan et al., 2009). Participants were told there would be musical
25 sequences playing in the background interrupted by short pauses so that they could take a break and
26 readjust their posture. Sounds were presented through isolated MEG-compatible ear tubes (Etymotic
27 ER•30). The recording lasted approximately 90 minutes and the whole experimental session took
28 between 2.5 and 3 hours including consent, musical expertise tests, preparation, instructions, breaks, and
29 debriefing.

30 2.1.4. MEG recording and analyses

31
32
33 Magnetic correlates of brain activity were recorded using an Elekta Neuromag MEG TRIUX system with
34 306 channels (204 planar gradiometers and 102 magnetometers) and a sampling rate of 1000 Hz.
35 Participants' head position was monitored with four coils (cHPI) attached to the forehead and the
36 mastoids. Offline, signals coming from inside the skull were isolated with the temporal extension of the
37 signal source separation (tSSS) technique (Taulu, Kajola, & Simola, 2003) using Elekta's MaxFilter
38 software (Version 2.2.15). This procedure included movement compensation for all but two participants,
39 for whom continuous head position information was not reliable due to suboptimal placement of the
40 coils. In these cases, the presence of reliable auditory event-related fields (ERFs) was successfully
41 verified by visually inspecting the amplitude and polarity of the P50(m) component. Eye-blink and
42 heartbeat artifacts were corrected with the aid of electrocardiography, electrooculography and
43 independent component analysis, as implemented by a semi-automatic routine (FastICA algorithm and
44 functions `find_bads_eog` and `find_bads_ecg` in the software MNE-Python) (Gramfort, 2013). Visual
45 inspection served as quality check.

46
47 The ensuing analysis steps were conducted with the Fieldtrip toolbox (version r9093) (Oostenveld, Fries,
48 Maris, & Schoffelen, 2011) in MATLAB (R2016a, The MathWorks Inc., Natick, MA). Epochs
49 comprising a time window of 400 ms after sound onset were extracted and baseline-corrected, with a

1 pre-stimulus baseline of 100 ms. Epochs were then low-pass filtered with a cut-off frequency of 35 Hz
2 and down-sampled to a resolution of 256 Hz. For each participant, ERFs were computed by averaging
3 the responses for all deviants for each feature and averaging a selection of an equal number of standards.
4 These were selected by finding, for each single deviant, a standard tone that was not preceded by a deviant
5 and was in the same position of the same HE or LE sequence—although not necessarily the same
6 transposition—in a different trial. This ruled out artefacts related to the difference in noise between
7 conditions—since there are many more standards than deviants—and the position of the deviant within
8 the sequence. After averaging, planar gradiometers were combined by computing root mean square
9 values. Finally, a new baseline correction was applied and MMNm difference waves were computed by
10 subtracting the ERFs of standards from the ERFs of deviants.

11
12 The statistical analyses were performed on combined gradiometer data, as these sensors measure activity
13 directly above the neural sources and have a better signal-to-noise ratio (Haumann, Parkkonen, Kliuchko,
14 Vuust, & Brattico, 2016). Magnetometers were used to inspect the polarity of components. For the
15 primary analyses, we used two-sided paired-samples *t*-tests in a univariate-mass approach with cluster-
16 based permutations as multiple comparisons correction (Maris & Oostenveld, 2007). The sample-level
17 significance threshold was .05, the chosen statistic was the maximal sum of clustered *T*-values (*maxsum*)
18 and the number of iterations was 10,000. The tests were restricted to a time window between 100 and
19 250 ms after sound onset as this covers the typical latency of the MMNm (Näätänen et al., 2007). To
20 assess the presence of MMNm responses, the ERFs of deviants and standards were contrasted for each
21 feature and condition. To evaluate the effect of stimulus entropy, the MMNm difference waves in the HE
22 and LE conditions were contrasted for each feature. Since separate tests were performed for each feature,
23 a Bonferroni correction for multiple comparisons was applied by multiplying *p*-values by the number of
24 features, namely four.

25
26 Further exploratory analyses on mean gradient amplitudes (MGA) were performed to estimate whether
27 MMNm responses for different features were affected differently by stimulus entropy. These analyses
28 were not conducted with a univariate-mass approach since peak latencies were clearly different between
29 features, which does not allow a direct comparison of amplitude. Instead, MGAs were computed for each
30 participant, feature and condition, by averaging ± 25 ms around the peak, defined as the highest local
31 maxima of the MMNm difference wave between 100 and 250 ms. This procedure was restricted to the
32 average of the four combined gradiometers in each hemisphere with the largest P50(m) responses in the
33 grand average, which we regard as an indicator of reliable auditory signals (channels in red in the top-
34 right head-plot of Figure 3). These channels also exhibit the largest MMNm amplitudes (Figure 4).
35 Differences in MGA between conditions were computed and used as the dependent variable. A linear
36 mixed model including feature, hemisphere and their interaction as predictors was fitted. Random
37 intercepts were also included. Random slopes were excluded as the amount of data points was not
38 sufficient for their estimation. Since this analysis was exploratory, we report parameter estimates and
39 confidence intervals, but not *p*-values. Standardized effect sizes (Cohen's *d*) of pairwise comparisons
40 were also computed as the difference between means divided by the residual standard deviation.

41 42 2.2. Behavioral experiment

43
44 In this experiment, a deviance detection task was used to confirm behaviorally the hypothesized
45 neurophysiological effects. In addition, since the MEG experiment included only two highly contrasting
46 conditions to observe clear differences in the neural signal, in the behavioral experiment we aimed to
47 assess a more fine-grained precision modulation of prediction error, and test whether repetitiveness or
48 pitch alphabet alone are sufficient to elicit the effect.

49

2.2.1. Participants

Twenty-one non-musicians (16 women, mean age 21.9, range 18-36) participated in the experiment. Musical expertise was measured with the Gold-MSI musical training subscale which yielded a score of 12.9 (SD = ± 5.77). All values lay in the 42nd percentile of the norm for this subscale. Participants were recruited through an online database for experiment participation, agreed to take part voluntarily, gave their informed consent and received 100 Danish kroner (approximately 13.5 euro) as compensation. Two subjects had previously participated in the MEG experiment. The data from all participants were analyzed, since above-chance deviance detection was verified in all cases. This was our predefined inclusion criterion. The sample size was chosen to be comparable to that of the MEG experiment. In this regard, Bishop and Hardiman (2010) demonstrated that behavioral deviance detection is present even for subjects who do not show reliable individual MMN responses, thus suggesting a higher sensitivity of behavioral measures.

2.2.2. Experimental design

Participants were presented with 32-note sequences with different levels of entropy and asked to decide after each one if a note with a wrong pitch was present in the sequence or not, and how certain they were about their response on a scale from 1 (not certain at all) to 7 (completely certain). Five conditions with different degrees of entropy were included (Figure 1b; the full stimulus set is shown in supplementary file 1). As in the MEG experiment, there was an LE condition consisting of an Alberti bass sequence, and an HE condition corresponding to a subset of five of the six melodies used in the MEG session. Three intermediate conditions (IE) were added to test for more fine-grained effects of entropy. The alphabet of these conditions was restricted to a C-major scale spanning eight tones from C4 to C5. Based on previous research showing an effect of pitch alphabet on the uncertainty of auditory stimuli (Auksztulewicz et al., 2017; Barascud et al., 2016), we conjectured that these sequences would have higher mean entropy than LE sequences, which spanned only three pitch categories, and lower mean entropy than HE sequences, which spanned up to fifteen pitch categories. For the three intermediate conditions, entropy was manipulated by changing their repetitiveness. Thus, the least uncertain of the three (IE1) was a repeated eight-note pattern. The middle condition (IE2), which consisted of five melodies, relaxed the constraint for exact repetition leading to reduced precision over the IE1 condition. Finally, the most uncertain of the three conditions (IE3) consisted of random orderings of the eight tones, with equal probability and without playing any of them twice in a row. These sequences were generated individually for each participant. Since sequential constraints are minimal in this condition, it was expected to have higher entropy than IE1 and IE2, but lower entropy than HE, given its smaller pitch alphabet. Note that the contrast LE-IE1 would reveal whether pitch alphabet is sufficient to elicit an uncertainty effect whereas the contrasts IE1-IE2, IE1-IE3 and IE2-IE3 would show the same with regard to repetitiveness.

The conjectured pattern (LE < IE1 < IE2 < IE3 < HE) was confirmed by IDyOM's mean entropy values (Figure 2b), estimated as described in section 2.1.2.1. Mean IC values followed a similar pattern (LE < HE < IE1 < IE2 < IE3), with the exception that HE had lower IC than all the intermediate conditions (Figure 2d). This might reflect the fact that HE melodies tended to have smaller pitch intervals (mostly 1- or 2-semitone steps) which are more common than larger intervals in Western tonal music (Huron, 2006) (supplementary figure 2). These estimates were not meant to be used as predictors in the analyses. Rather, they were used as approximate values to confirm the putative ordering of the conditions and help the interpretation of the results. Note that, since IE3 (random) sequences were unique for each subject, in this case entropy and IC values were estimated only for one participant, as a representative sample. These are the ten sequences shown in supplementary file 1. Finally, even though the variance of single-tone estimates was high, mean values for individual melodies showed little overlap between conditions

1 (supplementary figure 4), which indicates that entropy and IC systematically changed for each sequence
2 according to our manipulations. Whether entropy effects can be seen at the single-note level is a question
3 for future research.

4
5 To simplify the stimuli and make them comparable between conditions, only sequences in the C-major
6 key were included. Target sequences were created by randomly choosing a tone from the second half of
7 each sequence and raising its pitch 25 cents up. Deviations were smaller than in the MEG experiment to
8 avoid ceiling effects observed during piloting. Only pitch deviants were included, since this feature
9 showed the strongest reduction in amplitude between conditions in the neurophysiological data (see
10 section 3.1.2). The creation of the pool of standard and deviant tones followed the same procedure as in
11 the MEG experiment. Ten targets and ten foil sequences were presented for each condition in a random
12 order. We chose the number of trials as a compromise between the length of the task, the number of
13 conditions and the amount of data required to produce reliable estimates, based on pilot tests. Note that
14 the number of possible sequences differed between conditions which meant that they were repeated a
15 different number of times. Thus, LE and IE1 consisted of only one sequence, and for this reason they
16 were repeated ten times as targets and ten times as foils. In contrast, IE2 and HE consisted of five different
17 sequences, which entailed that they were repeated twice as targets and twice as foils. Finally, since there
18 were ten unique IE3 sequences for each participant, they were played only once as foils and once as
19 targets. There were four practice trials at the beginning of the session. The complete procedure lasted
20 approximately 25 minutes.

21 22 2.2.3. Statistical analyses

23
24 We used signal detection theory to analyze deviance detection performance (Stanislaw & Todorov,
25 1999). Both d' - and criterion (c -) scores were computed for each participant and condition. In the few
26 cases where a participant scored 100% or 0% of hits or false alarms, values were adjusted to 95% or 5%,
27 respectively. This prevented the z values in the computations from reaching infinity. d' -scores quantify
28 the difference between the proportions of hits and false alarms. Therefore, they provide a more accurate
29 measure than hit rates, since they take into account the bias in the response—e.g. answering always yes.
30 This bias can be directly quantified by c -scores, measured as the negative average of the proportion of
31 hits and false alarms.

32
33 Statistical analyses were performed using the software *R* (R Core Team, 2019). To assess the effects of
34 stimulus entropy, mixed models were fitted using the *lmer* function from the *lme4* package (Bates,
35 Mächler, Bolker, & Walker, 2015). The models allowed a random intercept for each participant to
36 account for individual differences. No random slopes were included, since there were not enough data
37 points to avoid overfitting and reach convergence. Three different models were compared: one with an
38 intercept only ($d0$), another with an additional term for entropy as a categorical factor ($d1$), and a final
39 model ($d2$) with the five conditions treated as an ordered linear predictor, assigning values from 1 to 5
40 according to our entropy manipulations. The comparison between $d1$ and $d0$ assessed the overall effect
41 of entropy, whereas comparing $d2$ and $d1$ revealed to what extent a linear trend could explain the data.
42 Regarding c -scores, we compared an intercept-only model ($cr0$) with a model including entropy as a
43 categorical factor ($cr1$), to assess the extent to which bias changed between conditions. Akaike
44 Information Criteria (AIC) and likelihood ratio tests were used for all comparisons.

45
46 Regarding confidence scores, ordinal logistic regression was employed in the form of a cumulative link
47 mixed model (Christensen, 2015), as implemented by the function *clmm* from the *ordinal* package
48 (Christensen, 2018). Log-odds (“logit”) was the link function. This method allowed the quantification of
49 the change in the proportion of responses in each confidence category, relative to the entropy conditions.

1 We fitted three initial models ($c0$, $c1$, $c2$) in which the estimated parameters, random effects and model
2 comparisons were the same as in the analysis of d' -scores, with the only difference that now there was
3 an intercept for each of the six cut-points between response categories (see supplementary file 2).
4 Moreover, we fitted two additional models ($c1s$, $c2s$) including random slopes for the effect of entropy
5 (categorical and ordered, respectively), since the amount of data made it possible in this case. Finally,
6 post-hoc, Bonferroni-corrected pairwise comparisons between conditions were conducted with the
7 function *glht* (from the *multcomp* package, Hothorn, Bretz, & Westfall, 2008) for d' - and c -scores, and
8 *lsmeans* (from the *lsmeans* package, Lenth, 2016) for confidence ratings.

10 3. Results

12 3.1. MEG experiment

14 3.1.1. Presence of the MMNm

15
16 Significant differences were found between standard and deviant ERFs in the 100-250 ms post-stimulus
17 time window for all features in both conditions (Figure 3). The differences were present bilaterally, were
18 largest over right temporal gradiometers, and showed a polarity—as observed in the magnetometers—
19 consistent with previous reports of the MMNm (e.g., Bonetti, Haumann, Vuust, Kliuchko, & Brattico,
20 2017) (Figure 4).

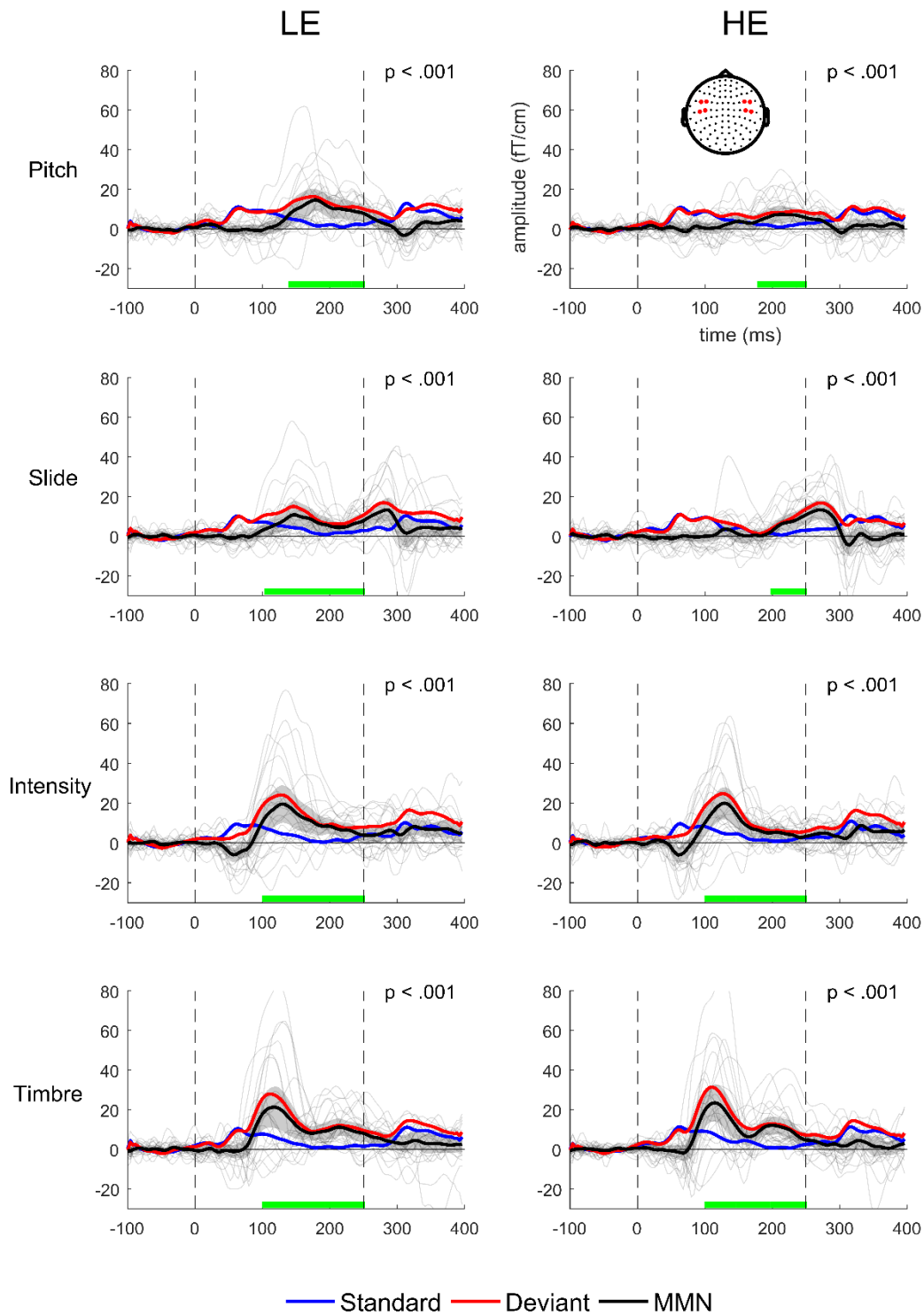
22 3.1.2. Low-entropy vs. high-entropy stimuli

23
24 An amplitude reduction in the MMNm difference waves was found for HE as compared to LE stimuli,
25 for pitch and slide deviants bilaterally (Figure 5). This reduction was maximal at temporal gradiometers.
26 No significant differences were found for intensity or timbre. The exploratory MGA analyses suggested
27 that differences between HE and LE contexts were larger for pitch and slide as compared to timbre and
28 intensity, in the right hemisphere ($d > .6$) (Figure 6a, Table 1). From the pairwise comparisons, only the
29 ones between pitch and timbre and slide and timbre yielded a 95% confidence interval excluding zero.
30 Differences in the left hemisphere, as well as between pitch and slide or intensity and timbre, were small
31 ($d \leq .4$).

32
33 The slide MMNm displayed an unusual shape (Figures 3 and 5). Specifically, it was sustained beyond
34 250 ms and peaked around 280 ms. The magnetometer polarity of the late response was the same as that
35 of the MMNm for the other features (Figure 4a). Furthermore, stimulus entropy seemed to affect the
36 earlier portion of the ERF more than the later part. In an exploratory analysis, a mixed effects model with
37 random intercepts, and latency and hemisphere as predictors, suggested larger differences in the earlier
38 than the later time window and no substantial differences as a function of hemisphere or the interaction
39 between hemisphere and latency (Figure 6b, parameters reported in the supplementary file 2).

40

1
2
3
4
5
6
7
8
9
10
11
12
13
14



15

Figure 3. Standard, deviant and difference (MMNm) amplitudes in high- (HE) and low-entropy (LE) conditions. Traces correspond to the average of the four right temporal combined gradiometers shown in red in the top-right head plot. Gray lines show individual MMNm traces. Dashed vertical lines indicate sound onsets. Shaded areas indicate 95% confidence intervals. For descriptive purposes, green lines indicate the time where the difference between standards and deviants was significant. Note, however, that this interval is not a reliable estimate of the true extent of the effect (Sassenhagen & Draschkow, 2019).

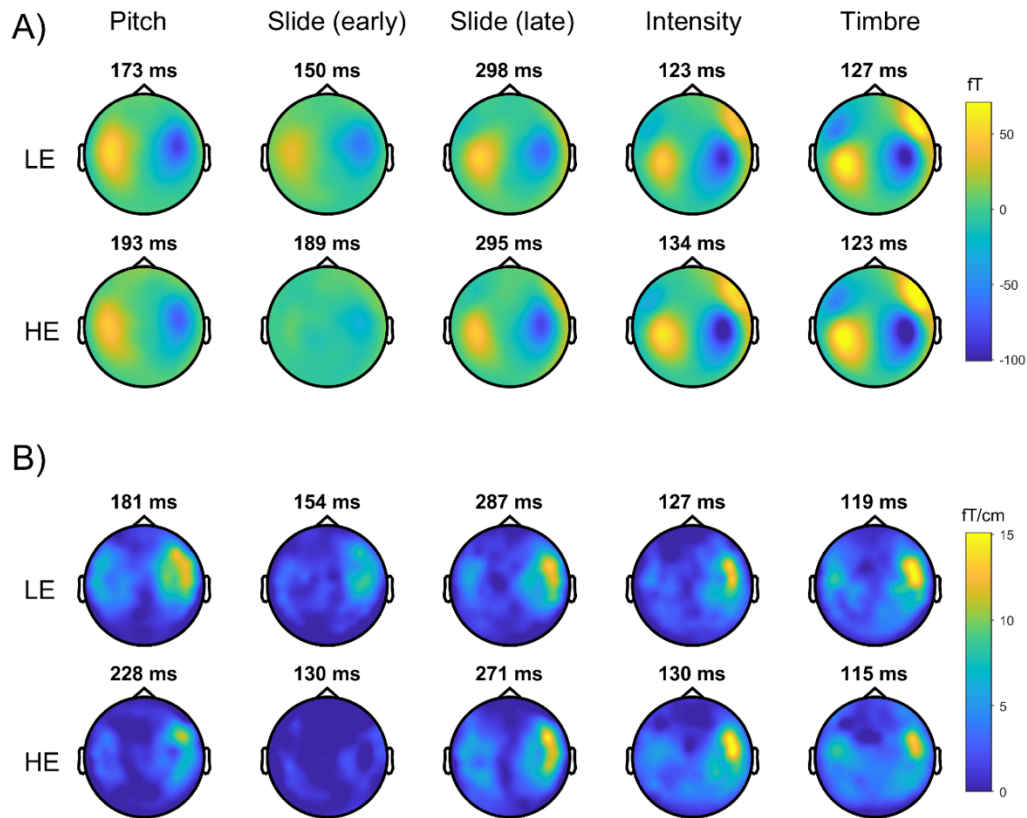


Figure 4. Topography of the MMNm (difference between standards and deviants) for (A) magnetometers and (B) gradiometers. Peak latencies are shown above each plot. The displayed activity corresponds to an average of ± 25 ms around the peak. Slide MMNm topographies are shown for activity around the peak in both early (100-250 ms) and late (250-350 ms) time windows. LE = low entropy, HE = high entropy

Table 1. Pairwise contrasts between features for the MMNm amplitude differences between low-entropy and high-entropy conditions. p = pitch, s = slide, i = intensity, t = timbre.

contrast	hemisphere	estimate	CI 2.5%	CI 97.5%	t	Cohen's d
p - s	right	0.4	-4.4	5.19	0.21	0.06
p - i	right	4.68	-0.11	9.47	2.53	0.75
p - t	right	7.18	2.39	11.98	3.89	1.15
s - i	right	4.28	-0.51	9.08	2.32	0.68
s - t	right	6.79	2	11.58	3.67	1.08
i - t	right	2.51	-2.29	7.3	1.36	0.4
p - s	left	-2.31	-7.1	2.48	-1.25	-0.37
p - i	left	-1.58	-6.38	3.21	-0.86	-0.25
p - t	left	0.06	-4.74	4.85	0.03	0.01
s - i	left	0.73	-4.07	5.52	0.39	0.12
s - t	left	2.37	-2.43	7.16	1.28	0.38
i - t	left	1.64	-3.15	6.43	0.89	0.26

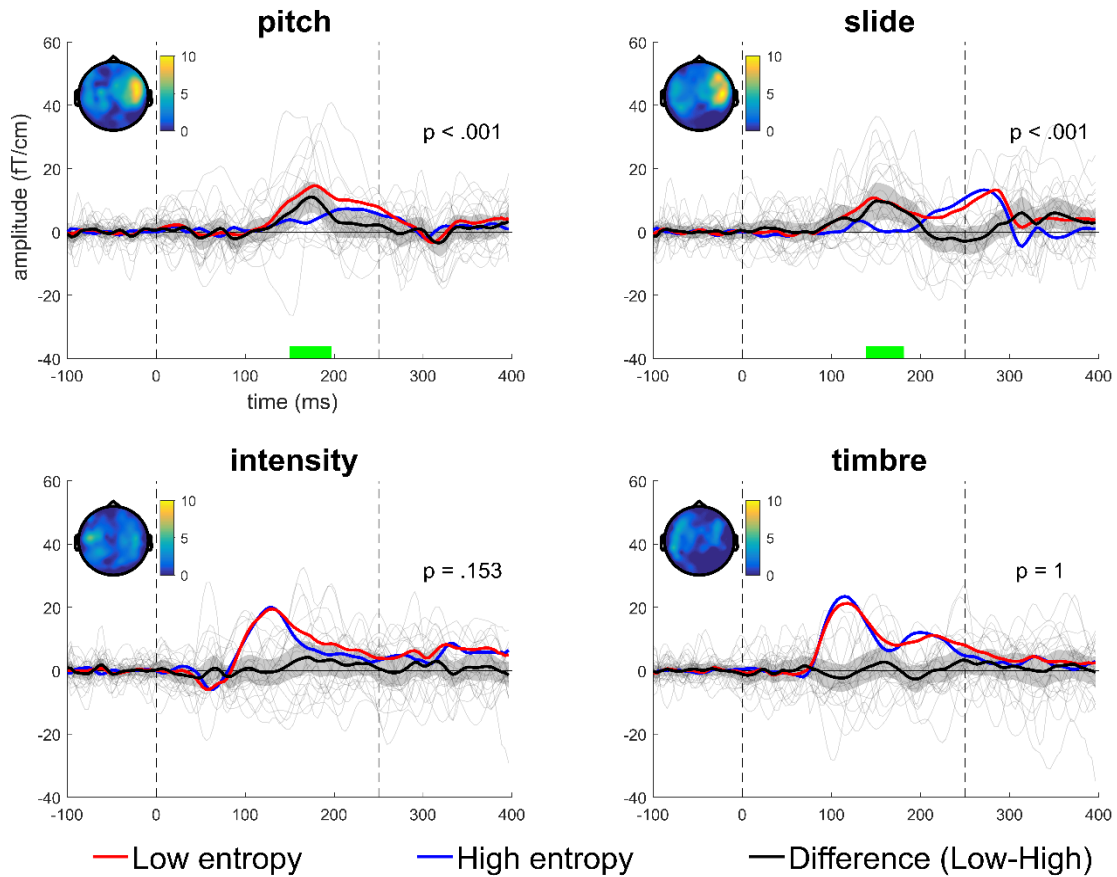


Figure 5. MMNm difference waves according to the two conditions. Traces correspond to the average of the four right temporal combined gradiometers shown in red in the top-right head plot on Figure 3. Gray lines show individual differences. Dashed vertical lines indicate sound onsets. Shaded areas indicate 95% confidence intervals. Topomaps show activity ± 25 ms around the peak difference. For descriptive purposes, green lines indicate the time where the difference between conditions was significant. Note, however, that this interval is not a reliable estimate of the true extent of the effect (Sassenhagen & Draschkow, 2019).

1 3.2. Behavioral experiment

2

3 The analyses of d' -scores showed that the $d1$ model (with a term for entropy) explained the data better
 4 than the $d0$ (intercept-only) model ($\chi^2 = 39.31, p < .001$). The AIC value was 269.43 for $d0$ and 238.12
 5 for $d1$, which agrees with the likelihood ratio test. Moreover, the comparison between $d1$ and $d2$ (a model
 6 with entropy as an ordered linear variable) yielded a nonsignificant result ($\chi^2 = 5.43, p = .14$) and the
 7 AIC value for model $d2$ (237.56) was lower than for $d1$. The residuals of models $d1$ and $d2$ were normally
 8 distributed, according to a visual inspection. Bonferroni-corrected pairwise comparisons showed
 9 significant differences between LE and the other four conditions, and between IE3 and IE2, HE and IE1,
 10 and HE and IE2 (Table 2). Non-significant differences with large ($d > .8$) effect sizes were found for IE3
 11 and IE1. Non-significant differences with small effect sizes ($0 < d < .02$) were observed for the contrasts
 12 IE2 - IE1 and HE - IE3 (Figure 7a; parameters reported in supplementary file 2).

13

14

15

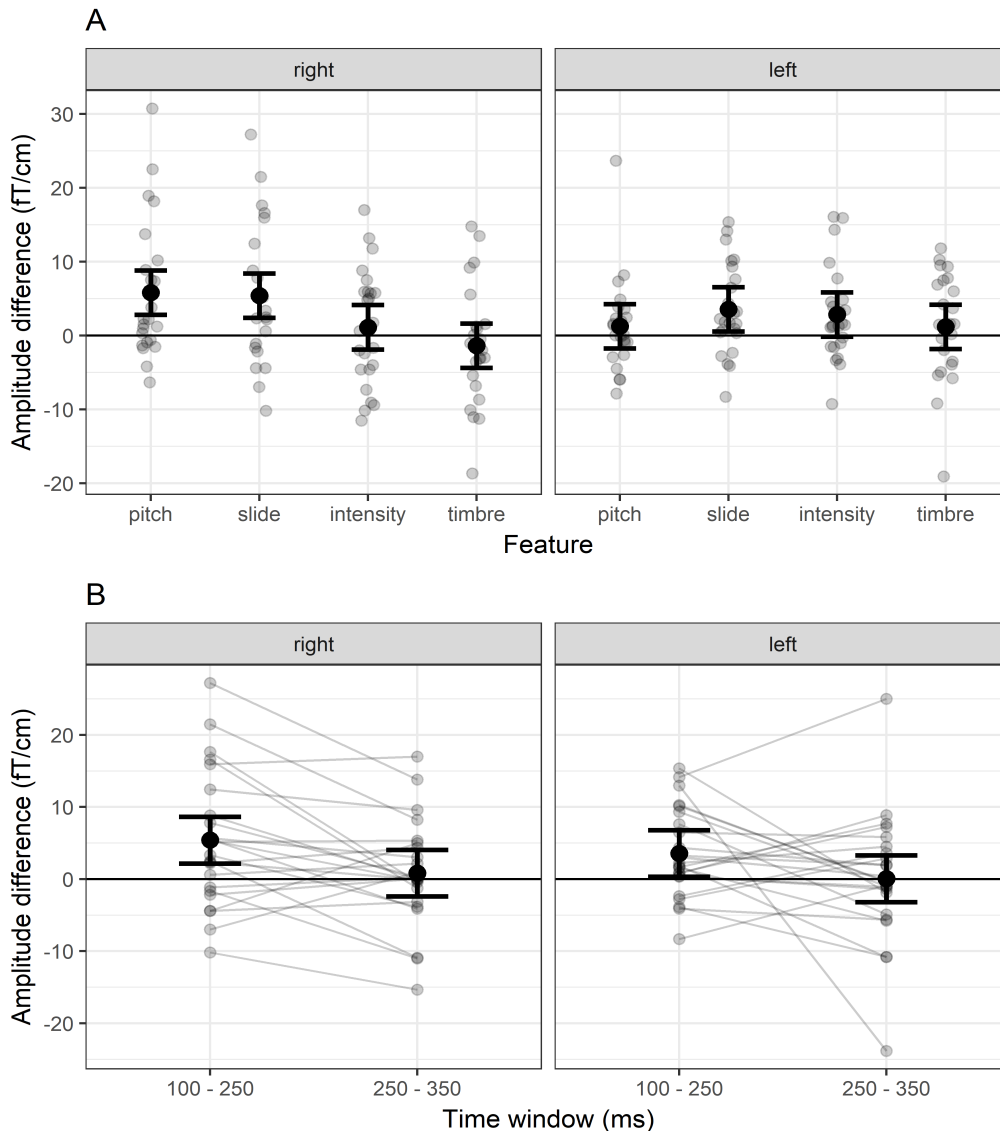
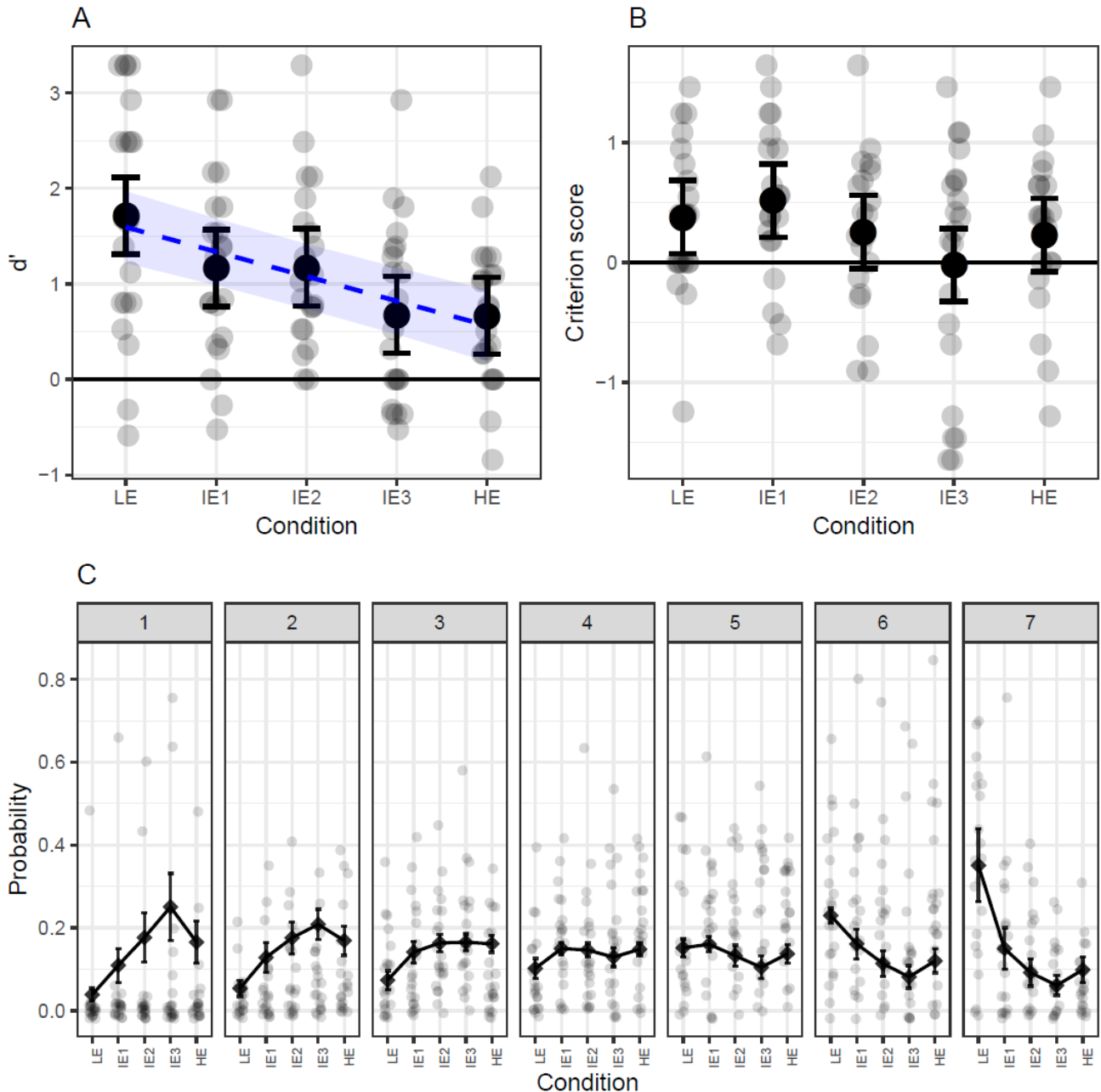


Figure 1. MMNm amplitude differences between low-entropy and high entropy conditions for (A) all features and (B) slide in two time windows, in both hemispheres. Error bars represent 95% confidence intervals.

- 1 Regarding c -scores, an intercept-only model ($cr0$) revealed a positive bias (figure 7b; supplementary file
- 2 2), suggesting an overall tendency for participants to answer negatively—i.e., no deviant present. A
- 3 model with entropy as a categorical factor ($cr1$) explained the data significantly better ($\chi^2 = 11.74$, p
- 4 = .02) and had lower AIC (207.84) than the $cr0$ (211.59) model. Pairwise comparisons revealed a
- 5 significant difference only for the IE1 - IE3 contrast, although a large effect ($d = .77$) was also seen for
- 6 the LE - IE3 contrast (Table 3).
- 7
- 8 Regarding confidence ratings, the $c1$ model (with a term for entropy) explained the data better ($\chi^2 =$
- 9 236.88, $p < .001$) and had lower AIC (6816.9) than the $c0$ (intercept-only) model (7045.8) (Figure 7c;
- 10 supplementary file 2). The $c1$ model also performed significantly better ($\chi^2 = 88.33$, $p < .001$) and had
- 11 lower AIC than the $c2$ model (6899.3), which included entropy as an ordered variable. Adding random
- 12 slopes improved model performance, as revealed by the comparison between $c1s$ and $c1$ ($\chi^2 = 234.02$, p
- 13 $< .001$), and $c2s$ and $c2$ ($\chi^2 = 101.36$, $p < .001$). A comparison between $c1s$ and $c2s$ ($\chi^2 = 221$, $p < .001$)
- 14 showed that the best model was $c1s$ —i.e. a model with a categorical effect of entropy and random slopes.

1 AIC values for $c1s$ and $c2s$ were 6610.9 and 6801.9, respectively. Pairwise comparisons for the $c1s$ model
 2 revealed significant differences between LE and the other conditions (Table 4). No other comparisons
 3 were significant and yielded odds ratios smaller than 3 and larger than 0.5. In contrast, all pairwise
 4 comparisons for the $c1$ model were significant, except between IE2 and HE, and IE1 and HE (Table 5).
 5 This indicates that differences between IE1, IE2, IE3 and HE are not detectable when individual
 6 variability in the relation between conditions is taken into account.



7

Figure 7. Plots of A) d' -scores, B) criterion scores and C) confidence ratings with their respective parameter estimates and 95% confidence intervals. For d' -scores the slope from the $d2$ model (with entropy as an ordered linear predictor) is also plotted as a blue dashed line. Confidence ratings are presented as the probability of responses in each category (1-7) as a function of the different entropy conditions. LE = low entropy, IE = intermediate entropy, HE = high entropy.

8

Table 2. Bonferroni-corrected pairwise contrast for d' -scores

contrast	estimate	CI 2.5%	CI 97.5%	t	p	Cohen's d
LE - IE1	0.55	0.07	1.02	3.16	0.02	0.98
LE - IE2	0.54	0.07	1.01	3.11	0.02	0.96
LE - IE3	1.04	0.56	1.51	5.99	< 0.001	1.86
LE - HE	1.04	0.57	1.52	6.04	< 0.001	1.86
IE1 - IE2	-0.01	-0.48	0.46	-0.04	1	-0.02
IE1 - IE3	0.49	0.02	0.96	2.84	0.05	0.88
IE1 - HE	0.5	0.03	0.97	2.88	0.04	0.89
IE2 - IE3	0.5	0.03	0.97	2.88	0.04	0.89
IE2 - HE	0.51	0.03	0.98	2.93	0.03	0.91
IE3 - HE	0.01	-0.46	0.48	0.05	1	0.02

Table 3. Bonferroni-corrected pairwise contrasts for c -scores

contrast	estimate	CI 2.5%	CI 97.5%	t	p	Cohen's d
LE - IE1	-0.14	-0.57	0.3	-0.87	1	-0.27
LE - IE2	0.12	-0.31	0.56	0.79	1	0.23
LE - IE3	0.4	-0.03	0.83	2.52	0.12	0.78
LE - HE	0.15	-0.29	0.58	0.93	1	0.29
IE1 - IE2	0.26	-0.17	0.7	1.65	0.98	0.51
IE1 - IE3	0.54	0.1	0.97	3.38	0.01	1.05
IE1 - HE	0.29	-0.15	0.72	1.8	0.72	0.56
IE2 - IE3	0.27	-0.16	0.71	1.73	0.84	0.52
IE2 - HE	0.02	-0.41	0.46	0.15	1	0.04
IE3 - HE	-0.25	-0.68	0.18	-1.58	1	-0.49

Table 4. Bonferroni-corrected pairwise contrasts for confidence ratings with no random slopes (model cI)

contrast	odds ratio	CI 2.5%	CI 97.5%	z	p
LE - IE1	2.88	2.01	4.13	8.23	< 0.001
LE - IE2	4.27	2.97	6.14	11.21	< 0.001
LE - IE3	6.41	4.44	9.25	14.2	< 0.001
LE - HE	4.05	2.84	5.79	11	< 0.001
IE1 - IE2	1.48	1.05	2.1	3.18	0.01
IE1 - IE3	2.23	1.57	3.15	6.44	< 0.001
IE1 - HE	1.41	1	1.98	2.81	0.05
IE2 - IE3	1.5	1.06	2.12	3.29	0.01
IE2 - HE	0.95	0.67	1.34	-0.43	1
IE3 - HE	0.63	0.45	0.89	-3.76	< 0.001

Table 5. Bonferroni-corrected pairwise contrasts for confidence ratings with random slopes (model cIs)

contrast	odds ratio	CI 2.5%	CI 97.5%	z	p
LE - IE1	3.06	1.81	5.19	5.96	< 0.001
LE - IE2	5.34	2.12	13.45	5.09	< 0.001
LE - IE3	8.33	2.63	26.37	5.16	< 0.001
LE - HE	4.93	2.23	10.9	5.65	< 0.001
IE1 - IE2	1.74	0.63	4.81	1.54	1
IE1 - IE3	2.72	0.77	9.59	2.23	0.26
IE1 - HE	1.61	0.65	4.02	1.46	1
IE2 - IE3	1.56	0.94	2.58	2.48	0.13
IE2 - HE	0.92	0.62	1.37	-0.56	1
IE3 - HE	0.59	0.34	1.03	-2.65	0.08

4. Discussion

In the present study, we investigated whether prediction error responses are affected by uncertainty in auditory contexts that are more complex, ecologically valid and real-sounding than those typically used in neuroimaging research. Employing tone sequences that resembled real music, we found decreased MMNm amplitudes for pitch and slide deviants in high-entropy (HE) as compared to low-entropy (LE) stimuli. This modulation was paralleled by accuracy scores—and, to some extent, confidence ratings—in a behavioral deviance detection task, which tended to decrease with higher entropy levels. These findings are in agreement with theories of predictive processing (Clark, 2013; Feldman & Friston, 2010; Hohwy, 2012) and models of musical expectations (Hansen et al., 2017; Ross & Hansen, 2016; Vuust et al., 2018) which propose that prediction error responses are reduced in contexts with low as compared to high predictive precision.

Our results are consistent with empirical research already showing reduced auditory prediction error responses in uncertain contexts (Garrido et al., 2013; Sohoglu & Chait, 2016; Southwell & Chait, 2018). They are also in agreement with studies that found differences in sustained tonic activity—as opposed to phasic responses such as the MMN—when comparing low- and high-entropy contexts (Auksztulewicz et al., 2017; Barascud et al., 2016; Nastase, Iacovella, & Hasson, 2014; Overath et al., 2007). Closer to assessing the effect of precision in a musical context, recent research shows that the entropy of short rhythmic sequences modulates MMN responses (Lumaca, Haumann, Brattico, Grube, & Vuust, 2019). However, in this study rhythms were presented as repeated short patterns, which makes them less akin to actual musical stimuli than our HE sequences. Together with studies showing an absence of MMN responses in random contexts (Hsu et al., 2015; Jacobsen & Schröger, 2001; Maess et al., 2007), the evidence suggests a role of precision in auditory processing at the neural level. However, our study is the first to suggest that precision might also modulate prediction error during music listening—a common, highly structured, and more ecologically valid auditory context.

4.1. Sources of uncertainty

In our experiments, differences in uncertainty arise from two main sources. First, the degree of repetitiveness of the stimuli. For example, in LE sequences, a simple pattern is iterated, which allows very precise expectations about upcoming events. In contrast, the scarcity of exact repetitions in HE sequences makes it harder to predict specific continuations from the preceding tones. This can be seen in the IDyOM estimates: for LE, IC drops after the first occurrence of the pattern, whereas HE sequences tend to have higher IC levels throughout (supplementary file 1). This is also the case for the intermediate conditions in which repetitiveness decreased, going from an iterative pattern to completely random sequences. The fact that we found differences in d' -scores between IE1 and IE3—where the pitch alphabet was the same—suggests that repetitiveness itself is sufficient to affect deviance detection.

The other source of uncertainty is pitch alphabet. For example, in the LE condition, where the alphabet consisted of three pitch heights, the probability of each tone was higher on average than in IE1 sequences, where the pitch alphabet consisted of eight pitch heights. Therefore, the larger the alphabet, the higher the uncertainty of the context. The fact that we found differences in d' -scores between LE and IE1—which are equally repetitive but have different alphabets—indicates that this factor is also sufficient to modulate the detection of unexpected sounds. Importantly, in the MEG experiment the difference in pitch alphabet was minimized by transposing LE sequences to cover the same range as HE sequences. Therefore, it is tempting to conclude that differences in neural activity are not driven by pitch alphabet but rather by repetitiveness. However, it is possible that participants learned the local alphabet of each

1 32-note sequence instead of the global alphabet of all the sequences. This would be reinforced by the
2 transpositions, assuming that participants heard the sequences with respect to the tonal center of the
3 respective key. Further research could aim to disentangle the contributions of repetitiveness and pitch
4 alphabet to the perceived context uncertainty and its effect on prediction error at the neural level.

5 6 4.2. IDyOM estimates 7

8 IDyOM's quantitative estimates generally followed our qualitative manipulations. Entropy values were
9 lower for LE than for the IE conditions, and in turn these were lower than for HE. However, some
10 nonlinearities can be observed. Specifically, LE seemed to yield much lower values than the other four
11 conditions, whereas differences between IE1, IE2, IE3 and HE were more subtle. Considering that we
12 have relatively complex and realistic stimuli and that IDyOM was not used to make quantitative
13 predictions, these nonlinearities do not affect the overall conclusions of the study. Instead, they help us
14 understand how well the model captures context uncertainty in more realistic settings. IC also tended to
15 follow the expected pattern, with higher values for contexts with higher uncertainty. The only exception
16 is the HE condition, which had lower values than all the intermediate conditions. This might reflect the
17 fact that small pitch intervals—i.e. 1 or 2 semitones—which have high probability in most Western tonal
18 music, were more common in HE than the IE conditions. Therefore, these results constitute an interesting
19 example of how entropy and information content can sometimes be dissociated. In sum, IDyOM's
20 estimates seem to characterize reasonably well the uncertainty of a context (cf. Hansen & Pearce, 2014).
21 Note, however, that the estimates are based on an adjustment which was meant to account for the
22 differences in pitch alphabet between conditions. Without the adjustment, the estimations are unreliable
23 and lead to misleading results such as LE sequences having higher entropy than IE3 (random) sequences
24 (supplementary figure 3). Nonetheless, we regard the adjustment as the best approximation to the
25 simulation of a listener who learns the alphabet of a context, taking into account that such learning has
26 not been implemented in IDyOM yet.

27
28 Since IDyOM was used here descriptively as a way to characterize the stimuli, the insight we can gain
29 from it is limited by several factors. First, we used low-level deviant sounds which currently are not
30 accounted for by the model and do not happen in real music. We acknowledge that directly modeling
31 uncertainty, prediction error and their interaction for the case of unexpected tones that actually occur in
32 music might provide a better insight on their neural and behavioral manifestations. However, the deviants
33 employed here have the advantage that they allow a clear dissociation between prediction error and
34 uncertainty, since they are equally unexpected regardless of the context, as they are always outside the
35 reference distribution. A related issue is that, even though IDyOM modeled pitch predictions, our pitch
36 deviants—i.e. out-of-tune tones—were not included in the model, which might lead some to argue that
37 IDyOM's estimates and the pitch MMNm address predictive processes of different kinds. A possible
38 mechanism linking these seemingly distinct levels of processing could be categorical perception
39 (Goldstone & Hendrickson, 2010; Schulze, 1989; Siegel & Siegel, 1977), in which mistuned tones would
40 be heard as renditions of the closest pitch category in the tuning system, and therefore be affected by its
41 uncertainty. Moreover, an interesting future path of enquiry would be to use single-tone entropy and IC
42 estimates to assess the effect of uncertainty on prediction error through regression and single-trial
43 analyses. Such an approach was not used here, as our aims were different. We were interested in the
44 uncertainty of the context as a whole, rather than its moment by moment fluctuations. We also tried to
45 maximize the contrast between LE and HE stimuli to observe clear differences in neural activity.
46 Furthermore, we wanted to assess the behavior of the MMN in a more complex and real-sounding setting,
47 which is why the comparison with an existing MMN paradigm was a natural choice. Therefore, our work
48 can be seen as a step towards more detailed models of the effect of precision on prediction error.
49

4.3. Feature-specific effects

The observed MMNm amplitudes seemed to be more affected by entropy for pitch and slide than for timbre and intensity deviants. We attribute this to the fact that we manipulated entropy in the pitch dimension, while other dimensions were restricted to the same two standard and deviant values (piano timbre vs. telephone receiver; high intensity vs. low intensity) across all conditions. The fact that these differences were most prominent in right temporal gradiometers might be due to the MMNm signal being largest in these sites, which in turn is consistent with the rightward asymmetry for music processing (e.g. Brattico et al., 2006; Koelsch et al., 2000; Zatorre, Belin, & Penhune, 2002). Consequently, it seems that stimulus uncertainty particularly affected deviants that depend on pitch information, which points to a feature-specific effect of precision on the MMN. This interpretation is consistent with MMN recordings in multi-feature (Näätänen, Pakarinen, Rinne, & Takegata, 2004; Vuust et al., 2011) and no-standard (Kliuchko, Heinonen-Guzejev, Vuust, Tervaniemi, & Brattico, 2016; Pakarinen et al., 2010) paradigms in which auditory regularities are created for a specific feature even though sounds constantly change in other features.

Furthermore, the suggested feature-selectivity is particularly interesting in the case of the slide MMNm, which had an unusual shape that extended and peaked beyond 250 ms. This shape may be attributed to the fact that, unlike in previous experiments, the pitch glide spanned the whole duration of the tone and thus the MMNm amplitude seemed to mirror the increasing magnitude of the continuous deviation. The fact that only the earlier portion of the response was different between conditions might reflect the coexistence of two violations. Since the slide deviant started two semitones below its corresponding standard, we propose that the first section is a pitch MMNm, while the second corresponds to a proper slide MMNm. Thus, in the LE block, where there were much more precise pitch expectations, slide deviants were heard first as a “wrong” pitch and afterwards as a pitch glide. In contrast, for HE sequences, the sense of a “wrong” pitch would be weaker but the glide would be equally surprising. If this account is correct, the fact that the first (pitch) but not the second (slide proper) part is reduced for HE is consistent with the idea of a feature-specific precision modulation of the MMNm. In any case, the differences between features discussed above have to be taken with caution since they constitute a non-hypothesized finding. Future work manipulating uncertainty across different features and measuring its effects on different types of deviants is required to properly test the proposed feature-selectivity.

4.4. Behavioral experiment

In the behavioral experiment, both d' -scores and confidence ratings were lower for HE than LE sequences. This confirms the MEG results and suggests that the effect of precision on neural prediction error for pitch-related features is associated with a reduced ability to distinguish pitch deviants from regular sounds. Criterion scores showed that participants were generally biased towards not identifying the deviants, and that there were no big differences between conditions except for IE3, which was less biased than IE1 and seemingly LE. This might suggest that when participants are faced with a completely random context, they are less conservative and guess more. However, given the absence of a consistent pattern for other conditions, this difference has to be interpreted with caution.

Analyses of d' -scores revealed that even fine-grained differences in context uncertainty can affect deviance detection. This is the case of comparisons such as LE-IE1 or IE2-IE3. As discussed above, these contrasts also show that both repetitiveness and pitch alphabet are sufficient for the effect to be elicited. In general, conditions with higher entropy tended to yield lower d' -scores. This is further supported by the $d2$ model, in which the five entropy conditions were included as an ordered linear predictor. Since

1 this model has similar likelihood—as suggested by the non-significant likelihood ratio test—, but also
2 less parameters and a lower AIC value than the $d1$ (categorical) model, the results support the idea that
3 higher uncertainty leads to reduced deviance detection even for small manipulations of the context.
4 However, it has to be noted that, for the categorical model, virtually no differences were found between
5 IE1 and IE2, and IE3 and HE, which slightly departs from a decreasing linear trend and IDyOM’s
6 estimates. The reason for this pattern are not easily identifiable in the current design, but it is possible
7 that stimulus-specific variation played a role, since conditions had a different number of unique
8 sequences or melodies.

9
10 Regarding confidence scores, clear differences were found between LE and the other four conditions. In
11 other words, participants tended to give higher ratings in the context with the highest precision. This
12 suggests that both neural and accuracy measures are related to a subjective feeling of certainty.
13 Interestingly, differences among the other conditions were observable in the case of the $c1$ model, which
14 did not include random slopes, but not the $c1s$ model, which included them. Thus, the apparent
15 differences between subtle changes in context uncertainty seemed to be driven only by a few subjects
16 and disappear when individual differences are taken into account. This indicates that subjective certainty
17 is less sensitive to contextual factors than deviance detection itself. It is worth noting that both d' -scores
18 and confidence showed large differences between LE and the other conditions, but either smaller or no
19 differences between IE1, IE2, IE3 and HE. This goes in line with the nonlinearities in IDyOM estimates,
20 and suggests that precision is maximized in repetitive contexts with small pitch alphabets.

21
22 Taken together, MEG and behavioral results point to a precision modulation of prediction error.
23 However, the relationship between the two experiments has to be taken with caution since the behavioral
24 task required participants to actively detect deviations, whereas in the MEG session they listened to the
25 sounds passively while watching a silent movie. Thus, there were additional higher-order processes
26 involved in the former which means that differences in d' -scores and confidence ratings cannot be
27 ascribed exclusively to the processes reflected in the MMN. Further research involving active tasks and
28 neurophysiological recordings is needed to assess the contribution of different components and
29 processing stages to the effect of interest.

30 31 4.5. Limitations and future directions

32
33 The work presented here has some limitations. For example, in the MEG experiment, we compared two
34 types of stimuli that differ in several aspects. As mentioned before, both repetitiveness and pitch-alphabet
35 seemed to play a role, and even though they influence the entropy of the sequences, it is not possible to
36 properly disentangle their individual contributions here. Another aspect is the repetition rate of individual
37 sequences. In the LE condition of the MEG experiment, individual sequences were repeated every two
38 trials, whereas individual melodies in the HE condition were repeated every twelve trials. This could
39 have created a stronger long-term memory representation for LE sequences which might be responsible
40 at least for part of the effect. Something similar might have happened in the behavioral experiment.
41 However, this possible confound cannot be regarded as the only explanation for our results since we
42 found differences for conditions with equal repetition rates (e.g. LE and IE1). This interpretation is also
43 compatible with the precision-based explanation if one regards long-term representations as very precise
44 expectations. Moreover, even though acoustic confounds were minimized in the MEG experiment by
45 using the same pitch alphabet in both conditions, it is still possible that differences in pitch distributions
46 between conditions created acoustic differences, as pitch discrimination is more difficult at very low or
47 very high frequency ranges (Sek & Moore, 1995). However, this explanation is unlikely since in both
48 conditions the range of frequencies was similarly covered (supplementary figure 1) and pitches were not
49 higher than 5 kHz, which is the frequency range for which discrimination significantly decreases.

1
2 Another aspect to consider is to what extent the findings can be generalized outside the conditions of the
3 experiment. For example, even though our stimuli are much more real-sounding than in most research,
4 they are still far from actual music. This comes from the use of isochronous sounds, the lack of artistic
5 expression, the somewhat excessive repetition, the absence of concurrent sound streams, and the
6 introduction of deviants that do not occur in real music. Nonetheless, we regard the stimuli as realistic
7 enough to be considered musical, and as a good compromise between experimental control and
8 ecological validity. A related issue is that our participants watched a movie, which arguably is not the
9 most common setting for music listening. Thus, how uncertainty affects prediction error under attentive
10 or other listening conditions remains to be seen. Another caveat is that participants were all nonmusicians
11 and were recruited from an online database, which might have introduced bias in the sample. Therefore,
12 replications with different populations are needed. Finally, we acknowledge that our hypotheses and
13 methods were not pre-registered, which is not desirable if one aims to minimize analytical bias. However,
14 in the spirit of transparency, we have shared our data and code openly so that our work can be directly
15 reproduced, scrutinized and built upon by the research community.

16
17 Despite these shortcomings, we believe our study makes two main contributions to the literature. First,
18 our HE condition constitutes an advance in the multi-feature experimental paradigms used to study
19 prediction error responses through the MMN. With it, we demonstrated that it is possible to obtain
20 reliable—albeit reduced—MMN signals with more complex and realistic stimuli in a multi-feature
21 paradigm. We have done so by exploiting the possibilities of abstract-feature MMN responses
22 (Paavilainen, 2013), which arise, not from the violation of an exact sensory representation established
23 through the exact repetition of a stimulus, but from the breach of an abstract regularity established in a
24 constantly changing acoustic stream.

25
26 Second and most importantly, our results show how prediction error signals behave in more complex and
27 more ecologically valid auditory contexts than those typically studied. This has consequences for the
28 current knowledge and future directions of research in audition and music cognition. For example, some
29 musical styles, such as atonal music, exploit uncertainty as an artistic resource. Therefore, one could
30 hypothesize imprecise predictions and reduced prediction error in these styles, something that could be
31 studied with the new MMN paradigm reported here. This is relevant for the understanding of the aesthetic
32 and emotional experiences associated with these types of music (Mencke, Omigie, Wald-Fuhrmann, &
33 Brattico, 2019). Another point of interest is how individual factors play a role in predictive processing in
34 uncertain contexts. For instance, it has been suggested that musical expertise enhances the precision of
35 auditory predictive models (e.g., Vuust et al., 2018). Thus, one could hypothesize that the effect of
36 precision on neural prediction error would be less pronounced in musical experts and potentially be
37 modulated by stylistic expertise. Finally, the fact that the MMN seems to be reduced and in some cases
38 disappears in uncertain contexts might question whether this brain response fully represents the core
39 processes involved in auditory prediction. Arguably, expectations are still generated in complex settings,
40 which means that other neural processes might also be at play. In that sense, the use of more ecologically
41 valid stimuli in combination with computational models such as IDyOM could reveal more accurately
42 the neural mechanisms involved.

43 44 5. Conclusion

45
46 In this study, we investigated whether prediction error responses are modulated by uncertainty in more
47 complex and real-sounding auditory contexts than those typically studied. Our results show that
48 prediction error responses—as indexed by the MMNm, accuracy scores and, to some extent, confidence
49 ratings—are reduced in contexts with higher uncertainty and suggest that this reduction may be

1 constrained to features that depend on the auditory dimension whose uncertainty is manipulated (pitch
2 in our case). Thus, in line with recent theories of predictive processing, our work provides further support
3 to precision-weighted prediction error as a fundamental principle for brain function, and moves us a step
4 closer to understanding auditory predictive processing in the rich environments of daily life.

6 **Design and Analysis Transparency (21-word solution)**

7 We report how we determined our sample size, all data exclusions (if any), all data inclusion/exclusion
8 criteria, whether inclusion/exclusion criteria were established prior to data analysis, all manipulations,
9 and all measures in the study.

11 **Acknowledgments**

13 We wish to thank the project initiation group, namely Christopher Bailey, Torben Lund and Dora
14 Grauballe, for their help with setting up the experiments. We also thank Nader Sedghi, Massimo Lumaca,
15 Giulia Donati, Ulrika Varankaité, Giulio Carraturo, Riccardo Proietti, and Claudia Iorio for assistance
16 during MEG recordings. We are indebted as well to the group of Italian trainees from IISS Simone-
17 Morea, Conversano, who helped with the behavioral experiment. Finally, we thank Hella Kastbjerg for
18 checking the English language of this manuscript. The Center for Music in the Brain is funded by the
19 Danish National Research Foundation (DNRF 117), which did not have any influence on the scientific
20 content of this article.

22 Declaration of interests: none

24 Preprint versions of this article available at: <https://doi.org/10.1101/422949>

26 **References**

- 28 Aukstulewicz, R., Barascud, N., Cooray, G., Nobre, A. C., Chait, M., & Friston, K. (2017). The
29 Cumulative Effects of Predictability on Synaptic Gain in the Auditory Processing Stream. *The*
30 *Journal of Neuroscience*, 37(28), 6751–6760. [https://doi.org/10.1523/JNEUROSCI.0291-](https://doi.org/10.1523/JNEUROSCI.0291-17.2017)
31 17.2017
- 32 Aukstulewicz, R., & Friston, K. (2015). Attentional Enhancement of Auditory Mismatch Responses: a
33 DCM/MEG Study. *Cerebral Cortex*, 25(11), 4273–4283. <https://doi.org/10.1093/cercor/bhu323>
- 34 Bar, M. (2009). Predictions: a universal principle in the operation of the human brain. *Philosophical*
35 *Transactions of the Royal Society B: Biological Sciences*, 364(1521), 1181–1182.
36 <https://doi.org/10.1098/rstb.2008.0321>
- 37 Barascud, N., Pearce, M. T., Griffiths, T. D., Friston, K. J., & Chait, M. (2016). Brain responses in
38 humans reveal ideal observer-like sensitivity to complex acoustic patterns. *Proceedings of the*
39 *National Academy of Sciences*, 113(5), E616–E625. <https://doi.org/10.1073/pnas.1508523113>
- 40 Bates, D., Mächler, M., Bolker, B., & Walker, S. (2015). Fitting Linear Mixed-Effects Models Using
41 lme4. *Journal of Statistical Software*, 67(1). <https://doi.org/10.18637/jss.v067.i01>
- 42 Bendixen, A., SanMiguel, I., & Schröger, E. (2012). Early electrophysiological indicators for
43 predictive processing in audition: A review. *International Journal of Psychophysiology*, 83(2),
44 120–131. <https://doi.org/10.1016/j.ijpsycho.2011.08.003>
- 45 Bishop, D. V. M., & Hardiman, M. J. (2010). Measurement of mismatch negativity in individuals: A
46 study using single-trial analysis. *Psychophysiology*. [https://doi.org/10.1111/j.1469-](https://doi.org/10.1111/j.1469-8986.2009.00970.x)
47 8986.2009.00970.x

- 1 Bonetti, L., Haumann, N. T., Vuust, P., Kliuchko, M., & Brattico, E. (2017). Risk of depression
2 enhances auditory Pitch discrimination in the brain as indexed by the mismatch negativity.
3 *Clinical Neurophysiology*, 128(10), 1923–1936. <https://doi.org/10.1016/j.clinph.2017.07.004>
- 4 Brattico, E., Tervaniemi, M., Näätänen, R., & Peretz, I. (2006). Musical scale properties are
5 automatically processed in the human auditory cortex. *Brain Research*, 1117(1), 162–174.
6 <https://doi.org/10.1016/j.brainres.2006.08.023>
- 7 Carrus, E., Pearce, M. T., & Bhattacharya, J. (2013). Melodic pitch expectation interacts with neural
8 responses to syntactic but not semantic violations. *Cortex*, 49(8), 2186–2200.
9 <https://doi.org/10.1016/j.cortex.2012.08.024>
- 10 Chennu, S., Noreika, V., Gueorguiev, D., Blenkmann, A., Kochen, S., Ibanez, A., ... Bekinschtein, T.
11 A. (2013). Expectation and Attention in Hierarchical Auditory Prediction. *Journal of*
12 *Neuroscience*, 33(27), 11194–11205. <https://doi.org/10.1523/JNEUROSCI.0114-13.2013>
- 13 Christensen, R. (2015). *Analysis of ordinal data with cumulative link models — estimation with the R-*
14 *package ordinal*.
- 15 Christensen, R. (2018). *ordinal—Regression Models for Ordinal Data*.
- 16 Clark, A. (2013). Whatever next? Predictive brains, situated agents, and the future of cognitive science.
17 *Behavioral and Brain Sciences*, 36(03), 181–204. <https://doi.org/10.1017/S0140525X12000477>
- 18 Clark, A. (2016). *Surfing uncertainty: prediction, action, and the embodied mind*. Oxford ; New York:
19 Oxford University Press.
- 20 Conklin, D., & Witten, I. H. (1995). Multiple viewpoint systems for music prediction. *Journal of New*
21 *Music Research*, 24(1), 51–73. <https://doi.org/10.1080/09298219508570672>
- 22 den Ouden, H. E. M., Kok, P., & de Lange, F. P. (2012). How Prediction Errors Shape Perception,
23 Attention, and Motivation. *Frontiers in Psychology*, 3.
24 <https://doi.org/10.3389/fpsyg.2012.00548>
- 25 Deouell, L. Y. (2007). The frontal generator of the mismatch negativity revisited. *Journal of*
26 *Psychophysiology*, 21(3–4), 188–203. <https://doi.org/10.1027/0269-8803.21.34.188>
- 27 Duncan, C. C., Barry, R. J., Connolly, J. F., Fischer, C., Michie, P. T., Näätänen, R., ... Van Petten, C.
28 (2009). Event-related potentials in clinical research: Guidelines for eliciting, recording, and
29 quantifying mismatch negativity, P300, and N400. *Clinical Neurophysiology*, 120(11), 1883–
30 1908. <https://doi.org/10.1016/j.clinph.2009.07.045>
- 31 Feldman, H., & Friston, K. J. (2010). Attention, Uncertainty, and Free-Energy. *Frontiers in Human*
32 *Neuroscience*, 4. <https://doi.org/10.3389/fnhum.2010.00215>
- 33 Friston, K. (2005). A theory of cortical responses. *Philosophical Transactions of the Royal Society B:*
34 *Biological Sciences*, 360(1456), 815–836. <https://doi.org/10.1098/rstb.2005.1622>
- 35 Friston, K. (2010). The free-energy principle: a unified brain theory? *Nature Reviews Neuroscience*,
36 11(2), 127–138. <https://doi.org/10.1038/nrn2787>
- 37 Fuller, D. (2001). Alberti bass. In *Oxford Music Online*.
38 <https://doi.org/10.1093/gmo/9781561592630.article.00447>
- 39 Garrido, M. I., Kilner, J. M., Stephan, K. E., & Friston, K. J. (2009). The mismatch negativity: A
40 review of underlying mechanisms. *Clinical Neurophysiology*, 120(3), 453–463.
41 <https://doi.org/10.1016/j.clinph.2008.11.029>
- 42 Garrido, M. I., Rowe, E. G., Halász, V., & Mattingley, J. B. (2018). Bayesian Mapping Reveals That
43 Attention Boosts Neural Responses to Predicted and Unpredicted Stimuli. *Cerebral Cortex*,
44 28(5), 1771–1782. <https://doi.org/10.1093/cercor/bhx087>
- 45 Garrido, M. I., Sahani, M., & Dolan, R. J. (2013). Outlier Responses Reflect Sensitivity to Statistical
46 Structure in the Human Brain. *PLoS Computational Biology*, 9(3), e1002999.
47 <https://doi.org/10.1371/journal.pcbi.1002999>
- 48 Goldstone, R. L., & Hendrickson, A. T. (2010). Categorical perception. *Wiley Interdisciplinary*
49 *Reviews: Cognitive Science*, 1(1), 69–78. <https://doi.org/10.1002/wcs.26>

- 1 Gramfort, A. (2013). MEG and EEG data analysis with MNE-Python. *Frontiers in Neuroscience*, 7.
2 <https://doi.org/10.3389/fnins.2013.00267>
- 3 Hansen, N. C., Dietz, M. J., & Vuust, P. (2017). Commentary: Predictions and the brain: how musical
4 sounds become rewarding. *Frontiers in Human Neuroscience*, 11.
5 <https://doi.org/10.3389/fnhum.2017.00168>
- 6 Hansen, N. C., Højlund, A., Møller, C., Pearce, M., & Vuust, P. (2019). Domain-relevant auditory
7 expertise modulates the additivity of neural mismatch responses in humans. *BioRxiv*.
8 <https://doi.org/10.1101/541037>
- 9 Hansen, N. C., & Pearce, M. T. (2014). Predictive uncertainty in auditory sequence processing.
10 *Frontiers in Psychology*, 5. <https://doi.org/10.3389/fpsyg.2014.01052>
- 11 Hansen, N. C., Vuust, P., & Pearce, M. (2016). “If You Have to Ask, You’ll Never Know”: Effects of
12 Specialised Stylistic Expertise on Predictive Processing of Music. *PLOS ONE*, 11(10),
13 e0163584. <https://doi.org/10.1371/journal.pone.0163584>
- 14 Haumann, N. T., Parkkonen, L., Kliuchko, M., Vuust, P., & Brattico, E. (2016). Comparing the
15 Performance of Popular MEG/EEG Artifact Correction Methods in an Evoked-Response Study.
16 *Computational Intelligence and Neuroscience*, 2016, 1–10.
17 <https://doi.org/10.1155/2016/7489108>
- 18 Heilbron, M., & Chait, M. (2018). Great Expectations: Is there Evidence for Predictive Coding in
19 Auditory Cortex? *Neuroscience*, 389, 54–73.
20 <https://doi.org/10.1016/j.neuroscience.2017.07.061>
- 21 Hohwy, J. (2012). Attention and Conscious Perception in the Hypothesis Testing Brain. *Frontiers in*
22 *Psychology*, 3. <https://doi.org/10.3389/fpsyg.2012.00096>
- 23 Hohwy, J. (2013). *The predictive mind* (First edition). Oxford, United Kingdom ; New York, NY,
24 United States of America: Oxford University Press.
- 25 Hothorn, T., Bretz, F., & Westfall, P. (2008). Simultaneous Inference in General Parametric Models.
26 *Biometrical Journal*, 50(3), 346–363.
- 27 Hsu, Y.-F., Bars, S. L., Hämäläinen, J. A., & Waszak, F. (2015). Distinctive Representation of
28 Mispredicted and Unpredicted Prediction Errors in Human Electroencephalography. *Journal of*
29 *Neuroscience*, 35(43), 14653–14660. <https://doi.org/10.1523/JNEUROSCI.2204-15.2015>
- 30 Huron, D. B. (2006). *Sweet anticipation: music and the psychology of expectation*. Cambridge, Mass:
31 MIT Press.
- 32 Jacobsen, T., & Schröger, E. (2001). Is there pre-attentive memory-based comparison of pitch?
33 *Psychophysiology*, 38(4), 723–727. <https://doi.org/10.1111/1469-8986.3840723>
- 34 Jiang, J., Summerfield, C., & Egner, T. (2013). Attention Sharpens the Distinction between Expected
35 and Unexpected Percepts in the Visual Brain. *Journal of Neuroscience*, 33(47), 18438–18447.
36 <https://doi.org/10.1523/JNEUROSCI.3308-13.2013>
- 37 Kliuchko, M., Heinonen-Guzejev, M., Vuust, P., Tervaniemi, M., & Brattico, E. (2016). A window into
38 the brain mechanisms associated with noise sensitivity. *Scientific Reports*, 6(1).
39 <https://doi.org/10.1038/srep39236>
- 40 Koelsch, S., Gunter, T., Friederici, A. D., & Schröger, E. (2000). Brain Indices of Music Processing:
41 “Nonmusicians” are Musical. *Journal of Cognitive Neuroscience*, 12(3), 520–541.
42 <https://doi.org/10.1162/089892900562183>
- 43 Kok, P., Rahnev, D., Jehee, J. F. M., Lau, H. C., & de Lange, F. P. (2012). Attention Reverses the
44 Effect of Prediction in Silencing Sensory Signals. *Cerebral Cortex*, 22(9), 2197–2206.
45 <https://doi.org/10.1093/cercor/bhr310>
- 46 Lenth, R. V. (2016). Least-Squares Means: The R Package lsmeans. *Journal of Statistical Software*,
47 69(1). <https://doi.org/10.18637/jss.v069.i01>

- 1 Lieder, F., Stephan, K. E., Daunizeau, J., Garrido, M. I., & Friston, K. J. (2013). A Neurocomputational
2 Model of the Mismatch Negativity. *PLoS Computational Biology*, *9*(11), e1003288.
3 <https://doi.org/10.1371/journal.pcbi.1003288>
- 4 Lumaca, M., Haumann, N. T., Brattico, E., Grube, M., & Vuust, P. (2019). Weighting of neural
5 prediction error by rhythmic complexity: A predictive coding account using mismatch
6 negativity. *European Journal of Neuroscience*. <https://doi.org/10.1111/ejn.14329>
- 7 Maess, B., Jacobsen, T., Schröger, E., & Friederici, A. D. (2007). Localizing pre-attentive auditory
8 memory-based comparison: Magnetic mismatch negativity to pitch change. *NeuroImage*, *37*(2),
9 561–571. <https://doi.org/10.1016/j.neuroimage.2007.05.040>
- 10 Maris, E., & Oostenveld, R. (2007). Nonparametric statistical testing of EEG- and MEG-data. *Journal*
11 *of Neuroscience Methods*, *164*(1), 177–190. <https://doi.org/10.1016/j.jneumeth.2007.03.024>
- 12 Mencke, I., Omigie, D., Wald-Fuhrmann, M., & Brattico, E. (2019). Atonal Music: Can Uncertainty
13 Lead to Pleasure? *Frontiers in Neuroscience*, *12*. <https://doi.org/10.3389/fnins.2018.00979>
- 14 Müllensiefen, D., Gingras, B., Musil, J., & Stewart, L. (2014). The Musicality of Non-Musicians: An
15 Index for Assessing Musical Sophistication in the General Population. *PLoS ONE*, *9*(2),
16 e89642. <https://doi.org/10.1371/journal.pone.0089642>
- 17 Näätänen, R., Gaillard, A. W. K., & Mäntysalo, S. (1978). Early selective-attention effect on evoked
18 potential reinterpreted. *Acta Psychologica*, *42*(4), 313–329. [https://doi.org/10.1016/0001-](https://doi.org/10.1016/0001-6918(78)90006-9)
19 [6918\(78\)90006-9](https://doi.org/10.1016/0001-6918(78)90006-9)
- 20 Näätänen, R., Paavilainen, P., Rinne, T., & Alho, K. (2007). The mismatch negativity (MMN) in basic
21 research of central auditory processing: A review. *Clinical Neurophysiology*, *118*(12), 2544–
22 2590. <https://doi.org/10.1016/j.clinph.2007.04.026>
- 23 Näätänen, R., Pakarinen, S., Rinne, T., & Takegata, R. (2004). The mismatch negativity (MMN):
24 towards the optimal paradigm. *Clinical Neurophysiology*, *115*(1), 140–144.
25 <https://doi.org/10.1016/j.clinph.2003.04.001>
- 26 Nastase, S., Iacovella, V., & Hasson, U. (2014). Uncertainty in visual and auditory series is coded by
27 modality-general and modality-specific neural systems: Uncertainty in Visual and Auditory
28 Series. *Human Brain Mapping*, *35*(4), 1111–1128. <https://doi.org/10.1002/hbm.22238>
- 29 Omigie, D., Pearce, M. T., Williamson, V. J., & Stewart, L. (2013). Electrophysiological correlates of
30 melodic processing in congenital amusia. *Neuropsychologia*, *51*(9), 1749–1762.
31 <https://doi.org/10.1016/j.neuropsychologia.2013.05.010>
- 32 Oostenveld, R., Fries, P., Maris, E., & Schoffelen, J.-M. (2011). FieldTrip: Open Source Software for
33 Advanced Analysis of MEG, EEG, and Invasive Electrophysiological Data. *Computational*
34 *Intelligence and Neuroscience*, *2011*, 1–9. <https://doi.org/10.1155/2011/156869>
- 35 Overath, T., Cusack, R., Kumar, S., von Kriegstein, K., Warren, J. D., Grube, M., ... Griffiths, T. D.
36 (2007). An Information Theoretic Characterisation of Auditory Encoding. *PLoS Biology*, *5*(11),
37 e288. <https://doi.org/10.1371/journal.pbio.0050288>
- 38 Paavilainen, P. (2013). The mismatch-negativity (MMN) component of the auditory event-related
39 potential to violations of abstract regularities: A review. *International Journal of*
40 *Psychophysiology*, *88*(2), 109–123. <https://doi.org/10.1016/j.ijpsycho.2013.03.015>
- 41 Pakarinen, S., Huotilainen, M., & Näätänen, R. (2010). The mismatch negativity (MMN) with no
42 standard stimulus. *Clinical Neurophysiology*, *121*(7), 1043–1050.
43 <https://doi.org/10.1016/j.clinph.2010.02.009>
- 44 Pearce, M. (2005). The construction and evaluation of statistical models of melodic structure in music
45 perception and composition. City University London.
- 46 Pearce, M. (2018). Statistical learning and probabilistic prediction in music cognition: mechanisms of
47 stylistic enculturation: Enculturation: statistical learning and prediction. *Annals of the New York*
48 *Academy of Sciences*, *1423*(1), 378–395. <https://doi.org/10.1111/nyas.13654>

- 1 Pearce, M. T., Ruiz, M. H., Kapasi, S., Wiggins, G. A., & Bhattacharya, J. (2010). Unsupervised
2 statistical learning underpins computational, behavioural, and neural manifestations of musical
3 expectation. *NeuroImage*, *50*(1), 302–313. <https://doi.org/10.1016/j.neuroimage.2009.12.019>
- 4 R Core Team. (2019). *R: A Language and Environment for Statistical Computing*. Retrieved from
5 <https://www.R-project.org>
- 6 Rao, R. P. N., & Ballard, D. H. (1999). Predictive coding in the visual cortex: a functional
7 interpretation of some extra-classical receptive-field effects. *Nature Neuroscience*, *2*(1), 79–87.
8 <https://doi.org/10.1038/4580>
- 9 Ross, S., & Hansen, N. C. (2016). Dissociating Prediction Failure: Considerations from Music
10 Perception. *Journal of Neuroscience*, *36*(11), 3103–3105.
11 <https://doi.org/10.1523/JNEUROSCI.0053-16.2016>
- 12 Sassenhagen, J., & Draschkow, D. (2019). Cluster-based permutation tests of MEG/EEG data do not
13 establish significance of effect latency or location. *Psychophysiology*, e13335.
14 <https://doi.org/10.1111/psyp.13335>
- 15 Schröger, E., Marzecová, A., & SanMiguel, I. (2015). Attention and prediction in human audition: a
16 lesson from cognitive psychophysiology. *European Journal of Neuroscience*, *41*(5), 641–664.
17 <https://doi.org/10.1111/ejn.12816>
- 18 Schulze, H.-H. (1989). Categorical perception of rhythmic patterns. *Psychological Research*, *51*(1),
19 10–15. <https://doi.org/10.1007/BF00309270>
- 20 Sedley, W., Gander, P. E., Kumar, S., Kovach, C. K., Oya, H., Kawasaki, H., ... Griffiths, T. D.
21 (2016). Neural signatures of perceptual inference. *ELife*, *5*. <https://doi.org/10.7554/eLife.11476>
- 22 Sek, A., & Moore, B. C. J. (1995). Frequency discrimination as a function of frequency, measured in
23 several ways. *The Journal of the Acoustical Society of America*, *97*(4), 2479–2486.
24 <https://doi.org/10.1121/1.411968>
- 25 Siegel, J. A., & Siegel, W. (1977). Categorical perception of tonal intervals: Musicians can't tell sharp
26 from flat. *Perception & Psychophysics*, *21*(5), 399–407. <https://doi.org/10.3758/BF03199493>
- 27 Sohoglu, E., & Chait, M. (2016). Detecting and representing predictable structure during auditory
28 scene analysis. *ELife*, *5*. <https://doi.org/10.7554/eLife.19113>
- 29 Southwell, R., & Chait, M. (2018). Enhanced deviant responses in patterned relative to random sound
30 sequences. *Cortex*, *109*, 92–103. <https://doi.org/10.1016/j.cortex.2018.08.032>
- 31 Stanislaw, H., & Todorov, N. (1999). Calculation of signal detection theory measures. *Behavior*
32 *Research Methods, Instruments, & Computers*, *31*(1), 137–149.
33 <https://doi.org/10.3758/BF03207704>
- 34 Taulu, S., Kajola, M., & Simola, J. (2003). Suppression of Interference and Artifacts by the Signal
35 Space Separation Method. *Brain Topography*, *16*(4), 269–275.
36 <https://doi.org/10.1023/B:BRAT.0000032864.93890.f9>
- 37 Tervaniemi, M., Huotilainen, M., & Brattico, E. (2014). Melodic multi-feature paradigm reveals
38 auditory profiles in music-sound encoding. *Frontiers in Human Neuroscience*, *8*.
39 <https://doi.org/10.3389/fnhum.2014.00496>
- 40 Vuust, P., Brattico, E., Glerean, E., Seppänen, M., Pakarinen, S., Tervaniemi, M., & Näätänen, R.
41 (2011). New fast mismatch negativity paradigm for determining the neural prerequisites for
42 musical ability. *Cortex*, *47*(9), 1091–1098. <https://doi.org/10.1016/j.cortex.2011.04.026>
- 43 Vuust, P., Brattico, E., Seppänen, M., Näätänen, R., & Tervaniemi, M. (2012). Practiced musical style
44 shapes auditory skills. *Annals of the New York Academy of Sciences*, *1252*(1), 139–146.
45 <https://doi.org/10.1111/j.1749-6632.2011.06409.x>
- 46 Vuust, P., Liikala, L., Näätänen, R., Brattico, P., & Brattico, E. (2016). Comprehensive auditory
47 discrimination profiles recorded with a fast parametric musical multi-feature mismatch
48 negativity paradigm. *Clinical Neurophysiology*, *127*(4), 2065–2077.
49 <https://doi.org/10.1016/j.clinph.2015.11.009>

- 1 Vuust, P., Pallesen, K. J., Bailey, C., van Zuijen, T. L., Gjedde, A., Roepstorff, A., & Østergaard, L.
2 (2005). To musicians, the message is in the meter: Pre-attentive neuronal responses to
3 incongruent rhythm are left-lateralized in musicians. *NeuroImage*, 24(2), 560–564.
4 <https://doi.org/10.1016/j.neuroimage.2004.08.039>
- 5 Vuust, P., Witek, M., Dietz, M., & Kringelbach, M. L. (2018). Now You Hear It: A novel predictive
6 coding model for understanding rhythmic incongruity. *Annals of the New York Academy of*
7 *Sciences*, 1–11. <https://doi.org/10.1111/nyas.13622>
- 8 Wallentin, M., Nielsen, A. H., Friis-Olivarius, M., Vuust, C., & Vuust, P. (2010). The Musical Ear
9 Test, a new reliable test for measuring musical competence. *Learning and Individual*
10 *Differences*, 20(3), 188–196. <https://doi.org/10.1016/j.lindif.2010.02.004>
- 11 Zatorre, R. J., Belin, P., & Penhune, V. B. (2002). Structure and function of auditory cortex: music and
12 speech. *Trends in Cognitive Sciences*, 6(1), 37–46. [https://doi.org/10.1016/S1364-](https://doi.org/10.1016/S1364-6613(00)01816-7)
13 [6613\(00\)01816-7](https://doi.org/10.1016/S1364-6613(00)01816-7)
- 14
15