

# Modelling 3D magnetic networks in a realistic solar atmosphere

Frederick A. Gent<sup>1,2,3\*</sup>, Ben Snow<sup>4</sup>, Viktor Fedun<sup>5</sup> and Robertus Erdélyi<sup>3,6</sup>

<sup>1</sup>Academy of Finland ReSoLVE Centre of Excellence, Department of Computer Science, Aalto University, FI-02150, Finland

<sup>2</sup>School of Mathematics, Statistics and Physics, Newcastle University, Newcastle NE1 7RU, UK

<sup>3</sup>Solar Physics and Space Plasma Research Centre (SP2RC), School of Mathematics and Statistics, University of Sheffield, Sheffield S3 7RH, UK

<sup>4</sup>College of Engineering, Mathematics and Physical Sciences, University of Exeter, Exeter EX4 4QF, UK

<sup>5</sup>Plasma Dynamics Group, Department of Automatic Control and Systems Engineering, University of Sheffield, Sheffield S1 3JD, UK

<sup>6</sup>Department of Astronomy, Eötvös Loránd University, Pázmány Péter sétány 1/A, H-1117 Budapest, Hungary

Accepted 2019 July 25. Received 2019 July 23; in original form 2019 May 2

## ABSTRACT

The magnetic network extending from the photosphere (solar radius  $\simeq R_{\odot}$ ) to the lower corona ( $R_{\odot} + 10$  Mm) plays an important role in the heating mechanisms of the solar atmosphere. Here we develop further the models of the authors with realistic open magnetic flux tubes, in order to model more complicated configurations. Closed magnetic loops and combinations of closed and open magnetic flux tubes are modelled. These are embedded within a stratified atmosphere, derived from observationally motivated semi-empirical and data-driven models subject to solar gravity and capable of spanning from the photosphere up into the chromosphere and lower corona. Constructing a magnetic field comprising self-similar magnetic flux tubes, an analytic solution for the kinetic pressure and plasma density is derived. Combining flux tubes of opposite polarity, it is possible to create a steady background magnetic field configuration, modelling a solar atmosphere exhibiting realistic stratification. The result can be applied to the Solar and Heliospheric Observatory Michelson Doppler Imager (SOHO/MDI), Solar Dynamics Observatory Helioseismic and Magnetic Imager (SDO/HMI) and other magnetograms from the solar surface, for which photospheric motions can be simulated to explore the mechanism of energy transport. We demonstrate this powerful and versatile method with an application to HMI data.

**Key words:** MHD – Sun: atmosphere – Sun: chromosphere – Sun: magnetic fields – Sun: photosphere.

## 1 INTRODUCTION

Since the discovery that the solar corona is significantly hotter than the photosphere, following the 1932 solar eclipse (Cillié & Menzel 1935) and subsequent confirmation (Redman 1942), the explanation for this has posed a major challenge. Across the solar atmosphere, temperatures vary by orders of magnitude. Typical photospheric temperatures are about 6500 K (solar radius  $R_{\odot} \simeq 696$  Mm) and temperatures are above  $10^6$  K in the corona (out to about  $2R_{\odot}$ : Priest 1987, 2014; Aschwanden 2005; Erdélyi 2008, and references therein). The solar surface and atmosphere are extremely dynamic. Frequent and powerful events such as coronal mass ejections release high-energy, localized heating within the atmosphere, and yet the corona is hot everywhere. Jets, flares, prominences and flux emergence, among other things, carry mass and energy from the surface into the atmosphere. However, it remains unclear how energy is dissipated through the chromosphere and subsequently

to the coronal plasma (Zirker 1993; Aschwanden 2005; Klimchuk 2006; De Pontieu et al. 2011; van Ballegoijen et al. 2011; Priest, Chitta & Syntelis 2018; Zank et al. 2018). Persistent and ubiquitous small-scale processes would appear to be candidates for this effect. Some advocate small-scale reconnections of magnetic field lines (Gudiksen & Nordlund 2002, 2005; Bourdin, Bingert & Peter 2013). An alternative view may be that solar magnetic field lines, in the form of magnetic *flux tubes*, act as guides for magnetohydrodynamic (MHD) waves, which can carry the missing energy to heat the atmosphere to the observed temperatures. These occur at scales that are increasingly available for observational comparison (Jess et al. 2007; Morton et al. 2012; Wedemeyer-Böhm et al. 2012). This article is motivated by the wave-guide interpretation, but may nevertheless be useful more generally.

While models of magnetic field configuration dealing with coronal heating often set the flux-tube footpoints at the photosphere, some discount the effects of the chromosphere and the transition region (TR), a relatively narrow layer between chromosphere and corona where there is a jump in plasma density and temperature. In the corona, the magnetic field is commonly modelled as force-free

\* E-mail: [fred.gent.ncl@gmail.com](mailto:fred.gent.ncl@gmail.com)

(for example Schrijver & De Rosa 2003; Schrijver et al. 2004), assuming the plasma pressure to be negligible, but in the low chromosphere and the photosphere kinetic forces cannot reasonably be ignored, with the ratio of thermal to magnetic pressure  $\text{plasma-}\beta \gg 1$ . The dynamic interface region (IR) includes the chromosphere and TR, connecting the photosphere and lower corona (De Pontieu et al. 2014). The typical mass and energy density in the infrared (IR) are orders of magnitude larger than in the corona as a whole (McWhirter, Thonemann & Wilson 1975; Vernazza, Avrett & Loeser 1981; Fontenla et al. 2006; Fontenla et al. 2009; Fontenla, Balasubramaniam & Harder 2007), so it is reasonable to expect the IR dynamics to be critical for the coronal heating mechanism.

The extreme nine orders of magnitude gradient in plasma density (six in pressure, three in temperature) over 2.5Mm from the upper photosphere to the lower corona presents a significant challenge in modelling magnetic fields in the chromosphere (DeForest 2007). Typical magnetic flux-tube footpoint strengths of about 100 mT (1000 G) are observed emerging from the photosphere (Zwaan 1978; Priest 1987, 2014; Aschwanden 2005 (chapter 8.7); Erdélyi 2008 (chapter 5), and references therein). An isolated magnetic flux tube must, therefore, expand exponentially in radius as it rises to balance the plasma pressure. Although the solar atmosphere is highly dynamic and turbulent, many features, such as loops, spots and pores, can be observed to remain static for hours, days or even weeks (McGuire et al. 1977; Levine & Withbroe 1977; Malherbe et al. 1983) and this has been used to investigate the transport mechanisms along the field lines with a series of numerical simulations (Shelyag, Fedun & Erdélyi 2008; Fedun, Erdélyi & Shelyag 2009; Shelyag et al. 2009; Fedun, Shelyag & Erdélyi 2011; Vigeesh et al. 2012; Khomenko & Collados 2012; Mumford, Fedun & Erdélyi 2015; Mumford & Erdélyi 2015). These numerical studies were restricted to single flux tubes and did not breach the TR, so flux-tube interaction and the effect on the corona cannot feasibly be explored. Khomenko, Collados & Felipe (2008) and Khomenko & Collados (2012) constructed a 2D magnetic field with multiple flux tubes, each identical to its neighbour, but excluding the TR. Hasan et al. (2005) and Hasan & van Ballegooijen (2008) constructed a 2D magnetic field, which does extend into the low corona. Gent, Fedun & Erdélyi (2014, hereafter Paper II) generalized the background configuration to 3D, multiple, non-identical flux tubes, extending into the lower corona. This was successfully applied to a 3D model of a flux-tube pair by Snow et al. (2018), who showed that chromospheric shocks at the intersections between the tubes are capable of driving supersonic jets.

However, all of these models apply only to open magnetic flux tubes of the same polarity. Their major omission is flux loops with footpoints of opposite polarity, which are common features of solar magnetic networks. Vesecky, Antiochos & Underwood (1979) considered an analytic construction of a single 3D magnetic flux loop as a static background, but for a thermodynamic model, not MHD. The primary contribution of the current work will be to add loops to the multiple flux-tube network described in Paper II. An advantage of this result is that any arbitrary magnetogram of the photosphere, e.g. from the Helioseismic and Magnetic Imager (HMI) for the Solar Dynamics Observatory (SDO) (Kosovichev & HMI Science Team 2007), can be constructed by matching the vertical field for each pixel to the model and constructing a realistic 3D magnetic network extending into the corona analytically. Using the corresponding velocity field from the same observational image or similar, forward modelling can then be applied to explore the energy transport mechanism. The analytical model is outlined explicitly in Section 2, along with differences from Paper II. In

Section 3, some applications for the model are described and there is some discussion of its uses and limitations.

In general  $\beta \ll 1$  in the corona, so modelling perturbations about the steady background magnetic network without kinetic effects is reasonable. At the photosphere and in the lower chromosphere, however,  $\beta > 1$ , except inside low- $\beta$  sunspots and flux-tube footpoints. This is why it is important to model the steady background with kinetic and magnetic forces in equilibrium. In this framework, we can examine the MHD processes localized around strong magnetic structures, while, on the time- and length-scales of interest, the kinetically dominated ambient atmosphere supporting the magnetic structures also remains steady. Solving only the perturbation fields can reduce the numerical challenges. Even with more complicated magnetic networks, various analytic photospheric flows can be applied to investigate how energy propagates and is dissipated through the magnetic network, to help identify the most relevant physical processes.

## 2 MAGNETIC FLUX LOOP

### 2.1 Ambient magnetic field outside the flux tubes

In Gent et al. (2013, hereafter Paper I) we constructed analytically a 3D model of a single vertical magnetic flux tube embedded in a realistic solar atmosphere in magnetohydrostatic (MHS) equilibrium. This was extended to multiple magnetic flux tubes in Paper II.

The background atmosphere employed was derived from the combined modelling profiles of Vernazza et al. (1981, their table 12, hereafter VALIIC) and McWhirter et al. (1975, their table 3) for the chromosphere and lower solar corona, respectively (see fig. 1 in Paper I). We are only considering MHD, so require profiles only for the gas density and pressure or temperature to solve the steady-state momentum equation. The atmospheric models selected are sufficient for the qualitative results of interest to us, but other profiles accounting for additional or specific physics would also work, providing they depend only on solar radius. If additional physics were included, such as ionization, radiative transfer, self-gravity, etc., or if the hydrostatic equilibrium depended on horizontal forces, an alternative solution would be required.

Observations (chapter 3.5 in Mariska 1993; Schrijver & Title 2003) indicate that the atmosphere outside the flux tubes includes a non-zero magnetic field of order 1–10 mT in the corona. It is important to model this ambient field, so that realistic ratios can be obtained between the thermal and magnetic pressures, i.e.  $\text{plasma-}\beta < 1$  outside the flux tube. Paper I and Paper II implemented explicit external fields to provide ambient magnetic pressure. In this article, we model magnetic flux loops by combining vertical flux tubes of opposite polarity. For a flux tube of opposite polarity, an ordered ambient field will negate the effective field in the flux tube. Therefore, a constant vertical ambient field is not suitable for use with flux loops. A realistic solution still requires a low  $\text{plasma-}\beta$  in the corona. Refining the model further, the ambient magnetic pressure felt by each individual flux tube is now induced by the superposition of its neighbouring flux tubes.  $\text{Plasma-}\beta < 1$  above the photosphere will be obtained due to the expansion of strong flux tubes and loops near the local network. Therefore, we drop the ambient field denoted by  $b_{00}$  in equation (22) of Paper II.

### 2.2 The MHD equations

A full outline of the governing ideal MHD equations we would use to describe the environment in the solar atmosphere is provided

in Gent et al. (2014, their section 2.2). Our approach, following that of Shelyag et al. (2008), is to derive the system of equations governing the perturbed MHD variables by splitting the variables  $\rho$  (plasma density),  $e$  (energy density) and  $\mathbf{B}$  (magnetic field) into their background and perturbed components:

$$\rho = \rho_b + \tilde{\rho}, \quad e = e_b + \tilde{e}, \quad \mathbf{B} = \mathbf{B}_b + \tilde{\mathbf{B}}, \quad (1)$$

where a tilde denotes the perturbed portion and it is assumed that  $\rho_b$ ,  $e_b$  and  $\mathbf{B}_b$  do not vary with time. When the time-independent momentum equation describing the background equilibrium is deduced, the modified form of the momentum equation governing the perturbed system is given by

$$\begin{aligned} \frac{\partial [(\rho_b + \tilde{\rho}) u_i]}{\partial t} + \frac{\partial}{\partial x_j} \left[ (\rho_b + \tilde{\rho}) u_i u_j - \frac{\tilde{B}_i \tilde{B}_j}{\mu_0} \right] \\ + \frac{\partial}{\partial x_i} \tilde{p}_T - \frac{\partial}{\partial x_j} \left[ \frac{\tilde{B}_i B_{bj} + B_{bi} \tilde{B}_j}{\mu_0} \right] \\ + F_{\text{bal}_i} = \tilde{\rho} g_i \end{aligned} \quad (2)$$

and the consequent energy equation is given by

$$\begin{aligned} \frac{\partial \tilde{e}}{\partial t} + \frac{\partial}{\partial x_j} \left[ (e_b + \tilde{e}) u_j - \frac{\tilde{B}_i \tilde{B}_j}{\mu_0} u_i \right] \\ + \frac{\partial}{\partial x_j} \left[ \tilde{p}_T u_j - \frac{\tilde{B}_i B_{bj} + B_{bi} \tilde{B}_j}{\mu_0} u_i \right] \\ + \rho_{bT} \frac{\partial u_j}{\partial x_j} - \frac{B_{bj} B_{bi}}{\mu_0} \frac{\partial u_i}{\partial x_j} + F_{\text{bal}_i} u_i = \tilde{\rho} g_i u_i, \end{aligned} \quad (3)$$

in which  $\mathbf{u}$  and  $\mathbf{g}$  are the velocity and gravitational acceleration.  $\mathbf{F}_{\text{bal}}$  represents net background equilibrium forces. The system is completed by the equations of continuity, induction and state, as detailed in Paper II.

Given no vertical current  $J_z$ , a stationary state, where magnetic force balances pressure and gravitational forces exactly, has an MHS equilibrium solution providing the magnetic field satisfies

$$\partial_y B_z \partial_z B_x = \partial_x B_z \partial_z B_y \quad (4)$$

and, hence  $\mathbf{F}_{\text{bal}} = \mathbf{0}$ . A scalar solution for pressure can otherwise still be derived by inclusion of minimal horizontal balancing forces  $\mathbf{F}_{\text{bal}}$ , yielding forced magnetohydrostatic equilibrium (FME). These balancing forces are small compared with the other forces and may be considered to be a statistical steady superposition of small-scale high-cadence turbulence in the chromosphere, where the magnetic field is not force-free. Our approach is to specify the background magnetic field. We then solve the time-independent momentum equation

$$\nabla p_b + \nabla \frac{|\mathbf{B}_b|^2}{2\mu_0} - (\mathbf{B}_b \cdot \nabla) \frac{\mathbf{B}_b}{\mu_0} - \rho_b g \hat{\mathbf{R}} + \mathbf{F}_{\text{bal}} = \mathbf{0} \quad (5)$$

to find the FME  $p_b$  and  $\rho_b$  and identify the balancing forces  $\mathbf{F}_{\text{bal}}$ . Gravity depends only on solar radius  $\mathbf{R}$ .

### 2.3 A single magnetic flux tube

In cylindrical coordinates, taking  $\hat{\mathbf{z}}$  to be along  $\mathbf{R}$ , the magnetic potential of a self-similar axisymmetric magnetic flux tube is

$${}^m A_{br} = {}^m S \phi {}^m G \frac{\partial {}^m f}{\partial r}, \quad {}^m A_{b\phi} = 0, \quad {}^m A_{bz} = {}^m S \phi {}^m G \frac{\partial {}^m f}{\partial z}, \quad (6)$$

or, in Cartesian coordinates, we have

$$\begin{aligned} {}^m A_{bx} &= {}^m S \arctan \left( \frac{y - {}^m y}{x - {}^m x} \right) {}^m G \frac{\partial {}^m f}{\partial x}, \\ {}^m A_{by} &= {}^m S \arctan \left( \frac{y - {}^m y}{x - {}^m x} \right) {}^m G \frac{\partial {}^m f}{\partial y}, \\ {}^m A_{bz} &= {}^m S \arctan \left( \frac{y - {}^m y}{x - {}^m x} \right) {}^m G \frac{\partial {}^m f}{\partial z}, \end{aligned} \quad (7)$$

where  ${}^m A_b$  denotes the potential for the  $m$ th flux tube, which has its axial vertical magnetic field  ${}^m S$  located at a footpoint  $({}^m x, {}^m y)$  on the photosphere. We scale  ${}^m f$  and  ${}^m G$  from Paper II to

$${}^m f = -\frac{{}^m r^2 B_{0z}^2}{2} \text{ and } {}^m G = \exp \left( \frac{{}^m f}{f_0^2} \right), \quad (8)$$

with factor  $f_0^2$  governing the radial scale of the flux tube, and the radial distance  ${}^m r$  from the axis at  $({}^m x, {}^m y)$  is

$${}^m r = \sqrt{(x - {}^m x)^2 + (y - {}^m y)^2}. \quad (9)$$

The reduction in vertical field strength along the flux-tube axis is specified by an appropriate monotonically decreasing function  $B_{0z}(z)$ , such as a sum of exponentials, as applied in Paper II, or a polynomial form, as applied by Gary (2001) and employed in Section 3.1. The sign of real parameter  ${}^m S$  determines the polarity of the flux tube. The components of the magnetic field for the  $m$ th flux tube  ${}^m \mathbf{B}_b$  are then defined as in equation (22) of Paper II with  $b_{00} = 0$ . Now, however, by construction, at  $({}^m x, {}^m y)$ ,  ${}^m G = 1$  and  ${}^m r = {}^m f = 0$ . We also impose  $B_{0z}(z = 0) = 1$ . Hence, at the flux-tube axis, the photospheric magnetic field is  ${}^m B_{bz} = {}^m S$ , which can be set directly or interpolated from HMI data or similar.

Equation (5) can be decomposed into hydrostatic (HS) and MHS parts, i.e.

$$\begin{aligned} \nabla(p_{bh} + {}^m p_{bm}) + \nabla \frac{|{}^m \mathbf{B}_b|^2}{2\mu_0} - ({}^m \mathbf{B}_b \cdot \nabla) \frac{{}^m \mathbf{B}_b}{\mu_0} \\ + {}^m \mathbf{F}_{\text{bal}} - (\rho_{bh} + {}^m \rho_{bm}) g \hat{\mathbf{z}} = \mathbf{0}, \end{aligned} \quad (10)$$

in which  $p_{bh}$  and  $\rho_{bh}$  denote HS plasma pressure and density and  ${}^m p_{bm}$  and  ${}^m \rho_{bm}$  denote MHS adjustments due to flux tube  ${}^m \mathbf{B}_b$ .  ${}^m \mathbf{F}_{\text{bal}}$  vanishes, with equation (4) satisfied for the single flux tube. The HS equilibrium is constructed using the VALIIC (Vernazza et al. 1981) temperature and density profiles to calculate a pressure profile, using the ideal gas law. That is then differentiated vertically to produce a stable density profile, assuming constant gravity. The advantage of this method is that it allows the pressure and density fields to be corrected, after the MHS corrections have been applied, to exclude negative values. What remains of equation (10) is

$$\nabla {}^m p_{bm} + \nabla \frac{|{}^m \mathbf{B}_b|^2}{2\mu_0} - ({}^m \mathbf{B}_b \cdot \nabla) \frac{{}^m \mathbf{B}_b}{\mu_0} - {}^m \rho_{bm} g \hat{\mathbf{z}} = \mathbf{0}. \quad (11)$$

The solution to equation (11) follows Paper I and Paper II, in the absence of terms defining an ambient magnetic field  $b_{00}$ , to yield

$${}^m p_{bm} = \frac{{}^m S^2}{2\mu_0} {}^m G^2 [f_0^2 B_{0z} B_{0z}'' + 2 {}^m f B_{0z}'^2 - B_{0z}^4], \quad (12)$$

$$\begin{aligned} {}^m \rho_{bm} = \frac{{}^m S^2 {}^m G^2}{\mu_0 g} \\ \times \left[ \left( \frac{f_0^2}{2} + 2 {}^m f \right) B_{0z}' B_{0z}'' + \frac{B_{0z} B_{0z}''' f_0^2}{2} - 2 B_{0z}^3 B_{0z}' \right]. \end{aligned} \quad (13)$$

## 2.4 Including a second or further flux tube of mixed polarity

Let us now include a second flux tube, such that  ${}^n\mathbf{B}_b$  denotes one with the same construction as  ${}^m\mathbf{B}_b$  apart from the arbitrary axial coordinates ( ${}^n x$ ,  ${}^n y$ ) and parameter  ${}^n S$ . Equation (11) becomes

$$\begin{aligned} & \nabla({}^m p_{\text{bm}} + {}^n p_{\text{bm}} + {}^{mn} p_{\text{bm}}) \\ & - ([{}^m \mathbf{B}_b + {}^n \mathbf{B}_b] \cdot \nabla) \frac{{}^m \mathbf{B}_b + {}^n \mathbf{B}_b}{\mu_0} + \nabla \frac{|{}^m \mathbf{B}_b + {}^n \mathbf{B}_b|^2}{2\mu_0} \\ & + {}^{mn} \mathbf{F}_{\text{bal}} - ({}^m \rho_{\text{bm}} + {}^n \rho_{\text{bm}} + {}^{mn} \rho_{\text{bm}}) g \hat{\mathbf{z}} = \mathbf{0}, \end{aligned} \quad (14)$$

where superscript  ${}^n$  has equivalent meaning for the second flux tube to that indicated for the first in Equation (10). The additional superscript  ${}^{mn}$  refers to the interaction between the flux-tube pair. Subtracting equation (11), the equivalent for the second flux tube retains

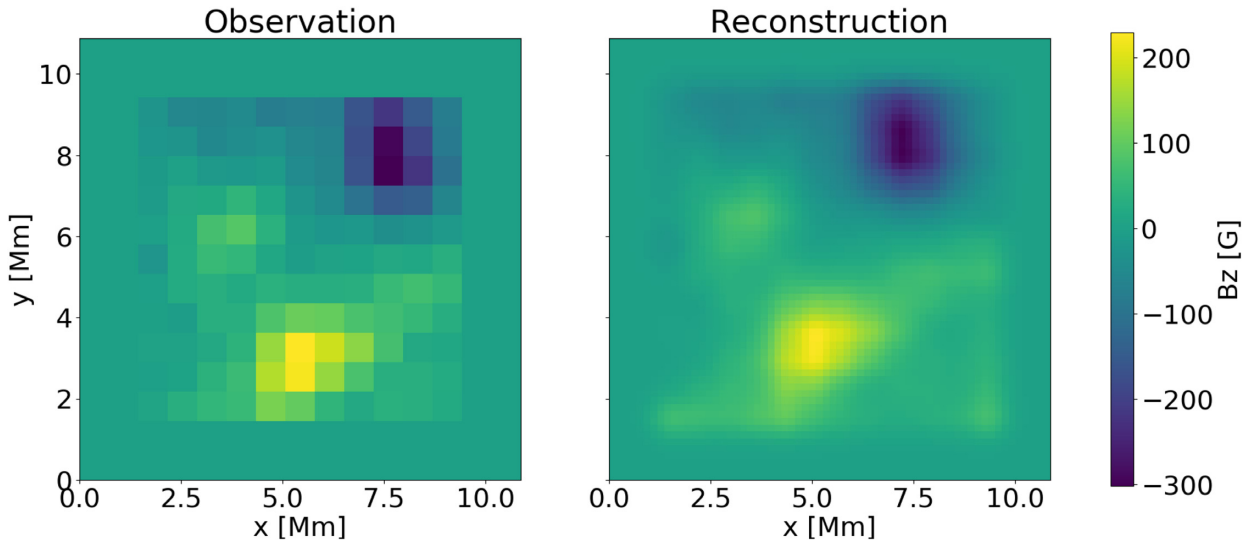
$$\begin{aligned} & \nabla {}^{mn} p_{\text{bm}} - ({}^m \mathbf{B}_b \cdot \nabla) \frac{{}^n \mathbf{B}_b}{\mu_0} - ({}^n \mathbf{B}_b \cdot \nabla) \frac{{}^m \mathbf{B}_b}{\mu_0} \\ & + \nabla \frac{{}^m \mathbf{B}_b \cdot {}^n \mathbf{B}_b}{2\mu_0} + {}^{mn} \mathbf{F}_{\text{bal}} - {}^{mn} \rho_{\text{bm}} g \hat{\mathbf{z}} = \mathbf{0}. \end{aligned} \quad (15)$$

Equation (4) is not satisfied, so  ${}^{mn} \mathbf{F}_{\text{bal}}$  does not vanish.

$$\begin{aligned} \frac{\partial}{\partial x} {}^{mn} p_{\text{bm}} &= \frac{2^n f^2}{f_0^2} B'_{0z} {}^{2m} S^n S B_{0z}^2 {}^m G^n G \frac{x - {}^n x}{\mu_0} \\ &+ \frac{2^m f^2}{f_0^2} B'_{0z} {}^{2m} S^n S B_{0z}^2 {}^m G^n G \frac{x - {}^m x}{\mu_0} \\ &+ \frac{\partial}{\partial x} \left( \frac{{}^m S^n S f_0^2}{2\mu_0} {}^m G^n G [B_{0z}'^2 + B_{0z} B_{0z}'' ] \right), \end{aligned} \quad (16)$$

in which the first two lines cannot integrate with respect to  $x$ , while a similar residual expression is obtained by integrating the  $y$ -component of equation (15). However, a scalar solution for the pressure and density is possible, if this contribution to the magnetic tension force is balanced by

$${}^{mn} \mathbf{F}_{\text{bal}} = -\frac{2}{f_0^2} B'_{0z} {}^{2m} S^n S B_{0z}^2 {}^m G^n G \quad (17)$$



**Figure 1.** Observed HMI magnetogram (left) and model (right) of the photosphere. Filled pixels highlight the resolution.

$$\left\{ {}^n f^2 \left[ \frac{x - {}^n x}{\mu_0} \hat{\mathbf{x}} + \frac{y - {}^n y}{\mu_0} \hat{\mathbf{y}} \right] + {}^m f^2 \left[ \frac{x - {}^m x}{\mu_0} \hat{\mathbf{x}} + \frac{y - {}^m y}{\mu_0} \hat{\mathbf{y}} \right] \right\}.$$

If we generalize to a system of  $N$  flux tubes with  $\mathbf{B}_b = {}^1 \mathbf{B}_b + {}^2 \mathbf{B}_b + \dots + {}^N \mathbf{B}_b$ , then the pressure can be fully described by

$$p_b = p_{\text{bh}} + \sum_{m=1}^N {}^m p_{\text{bm}} + \sum_{m,n=1|n>m}^N {}^{mn} p_{\text{bm}}, \quad (18)$$

in which  $p_{\text{bh}}$  is derived from the interpolated observed profile, constrained to be monotonically decreasing with height, and  ${}^m p_{\text{bm}}$  is defined by equation (12). The pressure adjustment due to each pairwise flux-tube interaction is given by

$${}^{mn} p_{\text{bm}} = \frac{{}^m S^n S f_0^2}{2\mu_0} {}^m G^n G [B_{0z}'^2 + B_{0z} B_{0z}'] - \frac{{}^m B_{bz} {}^n B_{bz}}{\mu_0}. \quad (19)$$

The corresponding expression for the plasma density is

$$\rho_b = \rho_{\text{bh}} + \sum_{m=1}^N {}^m \rho_{\text{bm}} + \sum_{m,n=1|n>m}^N {}^{mn} \rho_{\text{bm}}, \quad (20)$$

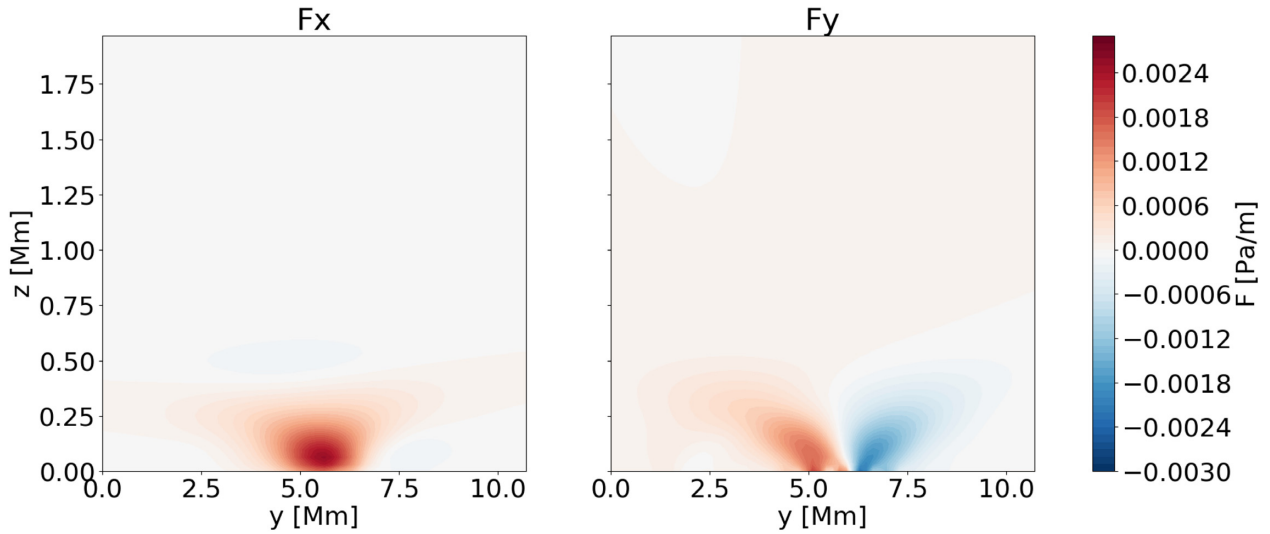
in which  $\rho_{\text{bh}}$  is the product of  $g^{-1}$  and the  $z$ -derivative of  $p_{\text{bh}}$ , and  ${}^m \rho_{\text{bm}}$  is defined by equation (13). The density adjustments due to each pairwise flux-tube interaction are given by

$$\begin{aligned} {}^{mn} \rho_{\text{bm}} &= 2 \frac{{}^m S^n S}{\mu_0 g} {}^m G^n G B_{0z} B_{0z}' \left[ \left( \frac{{}^m f + {}^n f}{f_0^2} - 2 \right) B_{0z}^2 \right. \\ &- \frac{{}^m f + {}^n f}{2} \left( \frac{B_{0z}'^2}{B_{0z}^2} + \frac{B_{0z}''}{B_{0z}} \right) + \frac{f_0^2}{4} \left( 3 \frac{B_{0z}''}{B_{0z}} + \frac{B_{0z}'''}{B_{0z}'} \right) \\ &+ \left. \left\{ (x - {}^m x)(x - {}^n x) + (y - {}^m y)(y - {}^n y) \right\} \right. \\ &\times \left. \left\{ \left( 1 - \frac{{}^m f + {}^n f}{f_0^2} \right) B_{0z}'^2 + B_{0z} B_{0z}'' - 2 \frac{B_{0z}^4}{f_0^2} \right\} \right]. \end{aligned} \quad (21)$$

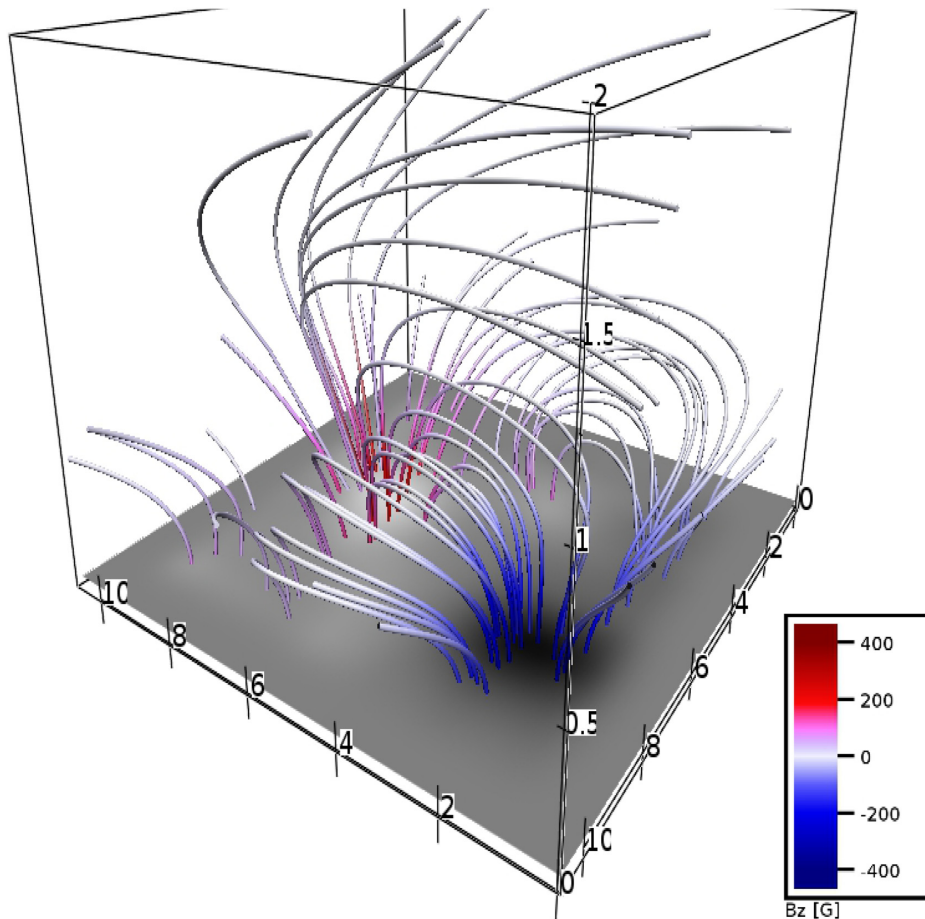
The net balancing force in equation (5) is then fully specified as

$$\mathbf{F}_{\text{bal}} = \sum_{m,n=1|n>m}^N {}^{mn} \mathbf{F}_{\text{bal}}. \quad (22)$$





**Figure 2.** 2D slice of model horizontal balancing forces at  $x = 8.15$  Mm, as defined by equation (22).



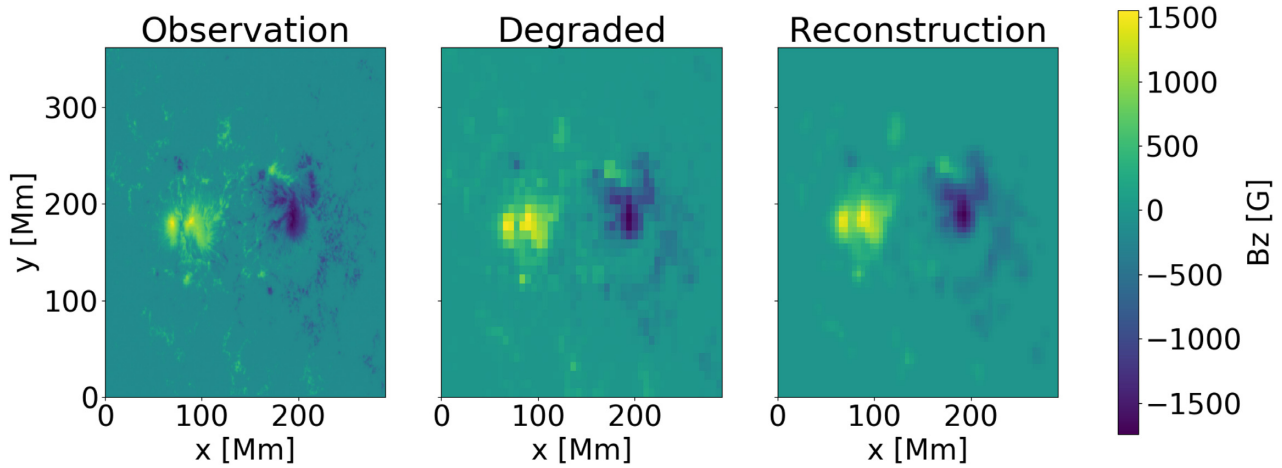
**Figure 3.** 3D plot of chromospheric loop reconstruction. Colour (or for B&W darker shade of field lines) indicates the magnetic field-line vertical component and grey-scale lower surface  $B_z$  at the photosphere.

### 3 APPLICATION OF THE MODEL

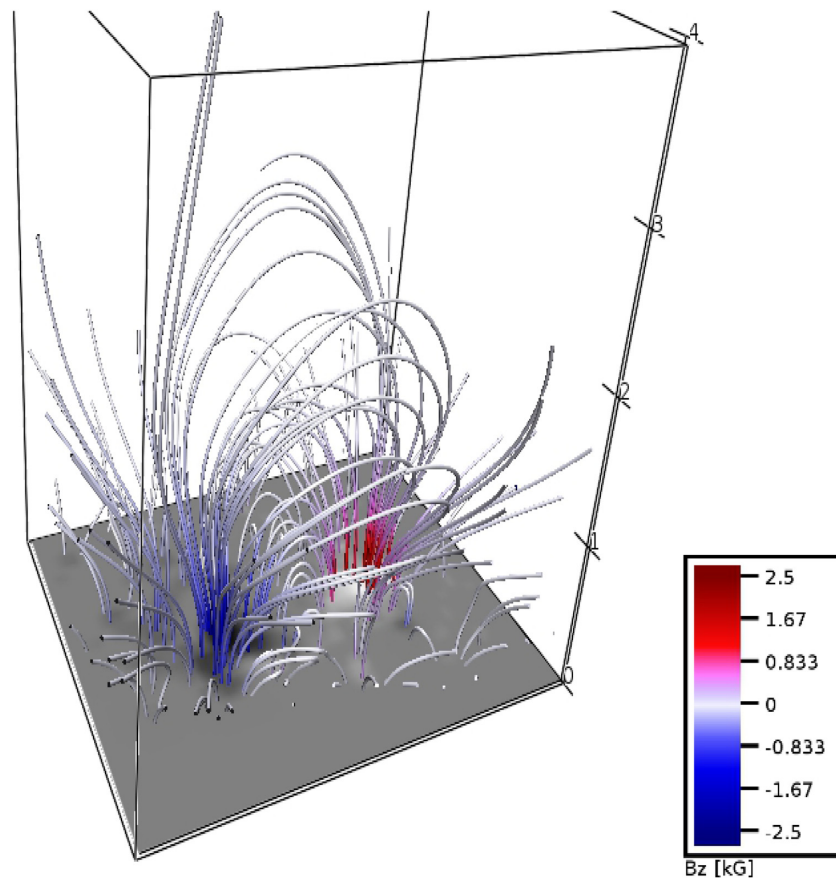
#### 3.1 Fitting arbitrary flux tubes

A stable atmosphere can be generated for any distribution of

photospheric magnetic field by using the observed magnetic field in each pixel to construct a series of interacting flux tubes. To demonstrate this, an atmosphere is constructed using a subsection of the HMI magnetogram observed on 2014.07.06.00.00.45. A



**Figure 4.** HMI magnetogram (left), spatially degraded HMI (centre) and model photosphere (right).



**Figure 5.** 3D plot of magnetic field lines above an active region, including the lower corona. Colour indicates their vertical component. Grey-scale shading shows  $B_z$  at the photosphere. Units are in kG, not G as in Fig. 3.

relatively small region ( $16 \times 16$  pixels) is chosen, featuring a few isolated magnetic regions of opposite polarity.

In a numerical grid of horizontal dimension  $64 \times 64$ , magnetic flux tubes with  $f_0 \simeq 750$  km are fitted for each pixel in the observing box. Fig. 1 shows the observed HMI magnetogram (left) and the reconstructed photospheric magnetic field (right). A region around the observation is set to zero to allow numerical boundaries to be well defined when the atmosphere is used for simulations. As

shown in Fig. 1, there is strong agreement between the observation and the reconstruction in terms of both location and magnitude of the magnetic field.

The density and pressure modifications required to stabilize the magnetic field are generated using the methods outlined in Section 2. The additional forcing terms  $F_{\text{bal}}$  applied to account for the magnetic tension effects between neighbouring flux tubes are plotted in Fig. 2. The forcing terms are significant only in the

lower atmosphere and are zero in most of the domain. For context, the magnitude of the forcing terms is maximally around 2 per cent of the horizontal pressure gradient. These forcing terms represent a small adjustment to the system.

The end result is a 3D FME that models the photospheric magnetic field, shown in Fig. 3, using VAPOR (Visualisation an Analysis Platform for Ocean, Atmosphere and Solar Researchers) (Clyne & Rast 2005; Clyne et al. 2007). Due to the modest footpoint magnetic field of around 30 mT, the loop is mainly confined to the chromosphere, so we model the region to a height of 2 Mm above the photosphere. Simulations of a well-observed region, in preparation, aim to illustrate the model's effectiveness for such complex networks.

Above active regions, the magnetic field can easily extend through the transition region and into the solar corona. To test the construction of such atmospheres, we apply the same methodology to an active region with vertical magnetic field strength of  $B_z \approx \pm 2500$  G. This region is much larger than the previous test and hence fitting a flux tube to each observational pixel is computationally expensive. To circumvent this, we degrade the observation to a lower spatial resolution (see Fig. 4) and fit flux tubes to the strongest sources only, yielding the network plotted in Fig. 5.

#### 4 RESULTS SUMMARY

In this article, we describe and demonstrate a new method for reconstructing a stationary-state solar atmosphere, with realistic magnetic configuration. The model parameters have been streamlined and generalized, making them easy to apply for arbitrary photospheric magnetic field sources. Calculating the magnetic fields and the resulting atmosphere is computationally efficient, available in parallel python from PySAC: Python Interface to the Sheffield Advanced Code (<https://github.com/fredgent/pysac>).

The free parameters in the radial scaling and scaleheight and the generalized inclusion of any ambient atmosphere models make the method versatile for a number of scientific problems. The physical veracity of the parameters can, however, be constrained by comparison with observations of the magnetic field and kinetics at various heights. The stability of the solution can also be confirmed by numerical simulation of each configuration. This was carried out for the flux-tube pair solution used in Snow et al. (2018), by treating the solution as MHD perturbations, and the system remained stationary to within machine accuracy.

We provide a new method to extrapolate the magnetic field from observations in the lower solar atmosphere. A common approach to obtaining a steady-state magnetic configuration is to start with a potential field extrapolation of vertical magnetic field measurements (Schrijver & De Rosa 2003). This is then evolved in MHD simulations to find an equilibrium (e.g. Gudiksen & Nordlund 2005; Hansteen et al. 2010; Fedun et al. 2011; Hansteen et al. 2015). The new construction method does not depend on any Dirichlet or von Neumann type boundary conditions or the time-step constraints required for the MHD PDE (Partial Differential Equation) solver. It does require care in the choice of parameters to avoid unrealistic gas density or temperatures. It may be a faster technique, but we propose to compare these two methods in future work. First, the efficiency of deriving the steady-state atmosphere using both methods will be measured. Secondly, the results of simulations using each construction of a solar region will be compared with photospheric and chromospheric observations.

#### ACKNOWLEDGEMENTS

The authors acknowledge CSC–IT Center for Science, Finland, for computational resources, and financial support by the Academy of Finland to the ReSoLVE Centre of Excellence (project no. 307411). FAG, RE and VF were supported by STFC Grant R/131168-11-1. BS is supported by STFC research grant ST/R000891/1. We also thank HPC-EUROPA3 Transnational Access Program for providing HPC facilities and support. We thank the anonymous referee for constructive criticism and advice.

#### REFERENCES

- Aschwanden M. J., 2005, *Physics of the Solar Corona. An Introduction with Problems and Solutions* (2nd edition), Springer, Berlin
- Bourdin P.-A., Bingert S., Peter H., 2013, *A&A*, 555, A123
- Cillie G. G., Menzel D. H., 1935, *Harvard College Observatory Circular*, 410, 1
- Clyne J., Rast M., 2005, in *Electronic Imaging 2005*, SPIE.DIGITAL LIBRARY, Bellingham USA, p. 284
- Clyne J., Mininni P., Norton A., Rast M., 2007, *New Journal of Physics*, 9, 301
- De Pontieu B. et al., 2011, *Science*, 331, 55
- De Pontieu B. et al., 2014, *Sol. Phys.*, 289, 2733
- DeForest C. E., 2007, *ApJ*, 661, 532
- Erdélyi R., 2008, in Dwivedi B. N., Narain U., eds, *Waves and Oscillations in the Solar Atmosphere* (Chapter 5), World Scientific Publishing Co., London. p. 61
- Fedun V., Erdélyi R., Shelyag S., 2009, *Sol. Phys.*, 258, 219
- Fedun V., Shelyag S., Erdélyi R., 2011, *ApJ*, 727, 17
- Fontenla J. M., Avrett E., Thuillier G., Harder J., 2006, *ApJ*, 639, 441
- Fontenla J. M., Balasubramaniam K. S., Harder J., 2007, *ApJ*, 667, 1243
- Fontenla J. M., Curdt W., Haberleiter M., Harder J., Tian H., 2009, *ApJ*, 707, 482
- Gary G. A., 2001, *Sol. Phys.*, 203, 71
- Gent F. A., Fedun V., Mumford S. J., Erdélyi R., 2013, *MNRAS*, 435, 689
- Gent F. A., Fedun V., Erdélyi R., 2014, *ApJ*, 789, 42
- Gudiksen B. V., Nordlund Å., 2002, *ApJ*, 572, L113
- Gudiksen B. V., Nordlund Å., 2005, *ApJ*, 618, 1020
- Hansteen V. H., Hara H., De Pontieu B., Carlsson M., 2010, *ApJ*, 718, 1070
- Hansteen V., Guerreiro N., De Pontieu B., Carlsson M., 2015, *ApJ*, 811, 106
- Hasan S. S., van Ballegooijen A. A., 2008, *ApJ*, 680, 1542
- Hasan S. S., van Ballegooijen A. A., Kalkofen W., Steiner O., 2005, *ApJ*, 631, 1270
- Jess D. B., McAteer R. T. J., Mathioudakis M., Keenan F. P., Andic A., Bloomfield D. S., 2007, *A&A*, 476, 971
- Khomenko E., Collados M., 2012, *ApJ*, 747, 87
- Khomenko E., Collados M., Felipe T., 2008, *Sol. Phys.*, 251, 589
- Klimchuk J. A., 2006, *Sol. Phys.*, 234, 41
- Kosovichev A. G., HMI Science Team, 2007, *Astron. Nachr.*, 328, 339
- Levine R. H., Withbroe G. L., 1977, *Sol. Phys.*, 51, 83
- Malherbe J. M., Schmieder B., Ribes E., Mein P., 1983, *A&A*, 119, 197
- Mariska J. T., 1993, *The Solar Transition Region*, Cambridge University Press, New York
- McGuire J. P., Tandberg-Hanssen E., Krall K. R., Wu S. T., Smith J. B., Speich D. M., 1977, *Sol. Phys.*, 52, 91
- McWhirter R. W. P., Thonemann P. C., Wilson R., 1975, *A&A*, 40, 63
- Morton R. J., Verth G., Jess D. B., Kuridze D., Ruderman M. S., Mathioudakis M., Erdélyi R., 2012, *Nature Communications*, 3, 1315
- Mumford S. J., Erdélyi R., 2015, *MNRAS*, 449, 1679
- Mumford S. J., Fedun V., Erdélyi R., 2015, *ApJ*, 799, 6
- Priest E. R., 1987, *Solar magneto-hydrodynamics*, Cambridge University Press, Cambridge

- Priest E., 2014, *Magnetohydrodynamics of the Sun*, Cambridge University Press, Cambridge
- Priest E. R., Chitta L. P., Syntelis P., 2018, *ApJ*, 862, L24
- Redman R. O., 1942, *MNRAS*, 102, 140
- Schrijver C. J., De Rosa M. L., 2003, *Sol. Phys.*, 212, 165
- Schrijver C. J., Title A. M., 2003, *ApJ*, 597, L165
- Schrijver C. J., Sandman A. W., Aschwand en M. J., De Rosa M. L., 2004, *ApJ*, 615, 512
- Shelyag S., Fedun V., Erdélyi R., 2008, *A&A*, 486, 655
- Shelyag S., Zharkov S., Fedun V., Erdélyi R., Thompson M. J., 2009, *A&A*, 501, 735
- Snow B., Fedun V., Gent F. A., Verth G., Erdélyi R., 2018, *ApJ*, 857, 125
- van Ballegooyen A. A., Asgari-Targhi M., Cranmer S. R., DeLuca E. E., 2011, *ApJ*, 736, 3
- Vernazza J. E., Avrett E. H., Loeser R., 1981, *ApJS*, 45, 635
- Vesecky J. F., Antiochos S. K., Underwood J. H., 1979, *ApJ*, 233, 987
- Vigeesh G., Fedun V., Hasan S. S., Erdélyi R., 2012, *ApJ*, 755, 18
- Wedemeyer-Böhm S., Scullion E., Steiner O., Rouppe van der Voort L., de La Cruz Rodriguez J., Fedun V., Erdélyi R., 2012, *Nature*, 486, 505
- Zank G. P., Adhikari L., Hunana P., Tiwari S. K., Moore R., Shiota D., Bruno R., Telloni D., 2018, *ApJ*, 854, 32
- Zirker J. B., 1993, *Sol. Phys.*, 148, 43
- Zwaan C., 1978, *Sol. Phys.*, 60, 213

This paper has been typeset from a  $\text{\TeX}/\text{\LaTeX}$  file prepared by the author.