

## 53. IWK

Internationales Wissenschaftliches Kolloquium  
International Scientific Colloquium



Faculty of  
Mechanical Engineering



.....

## PROSPECTS IN MECHANICAL ENGINEERING

8 - 12 September 2008

[www.tu-ilmenau.de](http://www.tu-ilmenau.de)

*th*  
TECHNISCHE UNIVERSITÄT  
ILMENAU

Home / Index:

<http://www.db-thueringen.de/servlets/DocumentServlet?id=17534>

## Published by Impressum

Publisher  
Herausgeber Der Rektor der Technischen Universität Ilmenau  
Univ.-Prof. Dr. rer. nat. habil. Dr. h. c. Prof. h. c. Peter Scharff

Editor  
Redaktion Referat Marketing und Studentische Angelegenheiten  
Andrea Schneider

Fakultät für Maschinenbau  
Univ.-Prof. Dr.-Ing. habil. Peter Kurz,  
Univ.-Prof. Dr.-Ing. habil. Rainer Grünwald,  
Univ.-Prof. Dr.-Ing. habil. Prof. h. c. Dr. h. c. mult. Gerd Jäger,  
Dr.-Ing Beate Schlütter,  
Dipl.-Ing. Silke Stauche

Editorial Deadline  
Redaktionsschluss 17. August 2008

Publishing House  
Verlag Verlag ISLE, Betriebsstätte des ISLE e.V.  
Werner-von-Siemens-Str. 16, 98693 Ilmenau

### CD-ROM-Version:

Implementation  
Realisierung Technische Universität Ilmenau  
Christian Weigel, Helge Drumm

Production  
Herstellung CDA Datenträger Albrechts GmbH, 98529 Suhl/Albrechts

ISBN: 978-3-938843-40-6 (CD-ROM-Version)

### Online-Version:

Implementation  
Realisierung Universitätsbibliothek Ilmenau  
[ilmedia](#)  
Postfach 10 05 65  
98684 Ilmenau

© Technische Universität Ilmenau (Thür.) 2008

The content of the CD-ROM and online-documents are copyright protected by law.  
Der Inhalt der CD-ROM und die Online-Dokumente sind urheberrechtlich geschützt.

### Home / Index:

<http://www.db-thueringen.de/servlets/DocumentServlet?id=17534>

J. Mämpel / M. Stubenrauch / R. Fetter / E. Andrada / O. E. Jimenez-Lopez /  
H. Witte / M. S. Fischer

## InspiRat – Technical Biology: How to Analyse Vertebrate Climbing

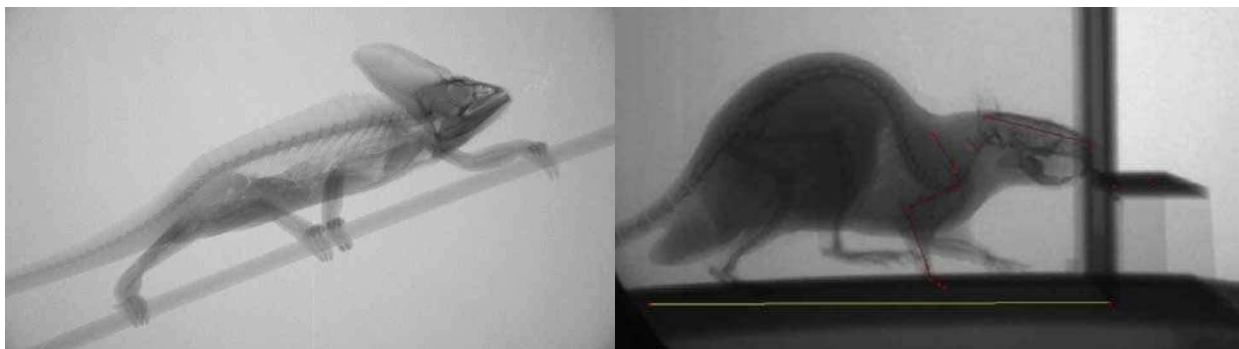
### MOTIVATION

InspiRat is the acronym for a project aiming at the realization of small biologically inspired climbing machines. It is realized by partner groups from Technische Universität Ilmenau, Friedrich-Schiller-Universität Jena and Max-Planck-Institute Stuttgart in cooperation with the Ilmenau company TETRA.

Understanding of principles of climbing of vertebrates as paragons for climbing machines has to be based on knowledge of their climbing mechanics and control. Since climbing is a mechanical process, descriptors have to be taken from mechanics: motion parameters (kinematics), forces and moments/torques (dynamics). How to measure mechanical properties like geometry and mass distributions (morphometry) and how to perform modelization will be reported elsewhere.

### NATURAL PARAGONS

For the biological inspiration of machine construction the spectrum of species is unlimited and covers vertebrates as well as invertebrates. Since the prospective mass of such a machine is in the range of 1 kg, based on simple hypotheses, experimental studies are performed on small vertebrates like chameleons or rats (fig. 1).



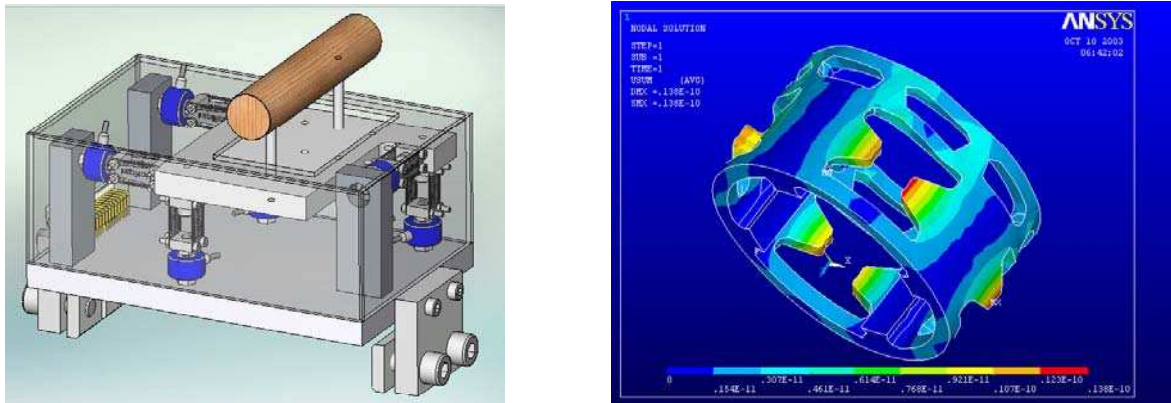
**Fig. 1:** Isolated pictures of cineradiographies. Left: chameleon. Right: rat.

## KINEMATICS

Kinematical analyses are realized via cineradiography (cf. fig. 1). The biplanar system is based on the high-end X-ray system Neurostar<sup>®</sup> from Siemens<sup>®</sup>. For very high frame rates, the use of X-ray image intensifiers in combination with TV-cameras was required. Two 16" image intensifiers are available. At full format of 16" the resolution is better than 1.3 LP/mm. For the X-ray channel we selected a first class high speed camera SPEEDCAM<sup>®</sup> visario g2 from Weinberger-Vision Company in Erlangen (Germany). With some overframing we can obtain 2.000 f/s at 1.024 times 768 pixels.

## DYNAMICS

The interactions of animals with substrates are measured synchronously to the cineradiography by self-constructed sensor setups, including commercial and self-constructed sensors (fig. 2).



**Fig. 2:** Sensor setup to measure forces and torques on substrate during climbing.  
Left: sensor location for external measurement. Right: sensor to be integrated in substrate.

### Acknowledgement:

The underlying project was granted by BMBF/DLR („InspiRat“ Fkz 01RI0633 ).

### Authors:

Jörg Mämpel, Mike Stubenrauch, Robert Fetter, Dr. Emanuel Andrada, Omar Eduardo Jimenez-Lopez, Univ.-Prof. Dr. Hartmut Witte

Technische Universität Ilmenau, Fakultät für Maschinenbau, Fachgebiet Biomechatronik.

P.O. Box 100565, D-98684 Ilmenau

Phone: +49-3677-69-2460

Fax: +49-3677-69-1280

E-mail: Joerg.Maempel@tu-ilmenau.de

Univ.-Prof. Dr. Martin S. Fischer

Friedrich-Schiller-Universität Jena, Institut für Spezielle Zoologie und Evolutionsbiologie

Erbertstraße 1, D-07743 Jena

Phone: +49-3641-949140

E-mail: Martin.Fischer@uni-jena.de