

Invest in experts. Donate now and help share their message with a global audience.

Donate now

THE CONVERSATION

Academic rigour, journalistic flair

When a friend dies the impact can be as traumatic as losing a family member

May 13, 2019 2.18pm BST

Syda Productions/Shutterstock

When a friend dies the impact can be as traumatic as losing a family member

May 13, 2019 2.18pm BST

The death of a friend is a loss that most people face at some point in their lives – often many times. But it is a grief that may not be taken seriously by employers, doctors or others. The so-called **hierarchy of grief**, a scale used to determine who is considered a more legitimate mourner than others, puts family members at the top. For this reason, the death of a close friend can feel shunted to the periphery and has been described as a **disenfranchised grief**.

There has not been much research on the impact the death of a friend has on a person, so we set out to address this with our **latest study**. We discovered that, far from being a trivial loss, the health and well-being of people who lose a close friend has a heavy toll in the four years after that loss.

For our study, published in PLOS ONE, we analysed responses from an Australian **household survey** of more than 26,000 people. Of the people who completed the survey, over 9,500 had experienced the death of a close friend. Our analysis showed that life satisfaction of the bereaved fell sharply (figure 1) compared with a matched

Authors



Liz Forbat

Associate Professor of Ageing, University of Stirling



Wai-Man Liu

Associate Professor, Research School of Finance, Actuarial Studies and Statistics, Australian National University

non-bereaved group. There is a large and sharp drop in this life satisfaction from month three to nine and another smaller yet still sizeable drop at months 19 to 21.

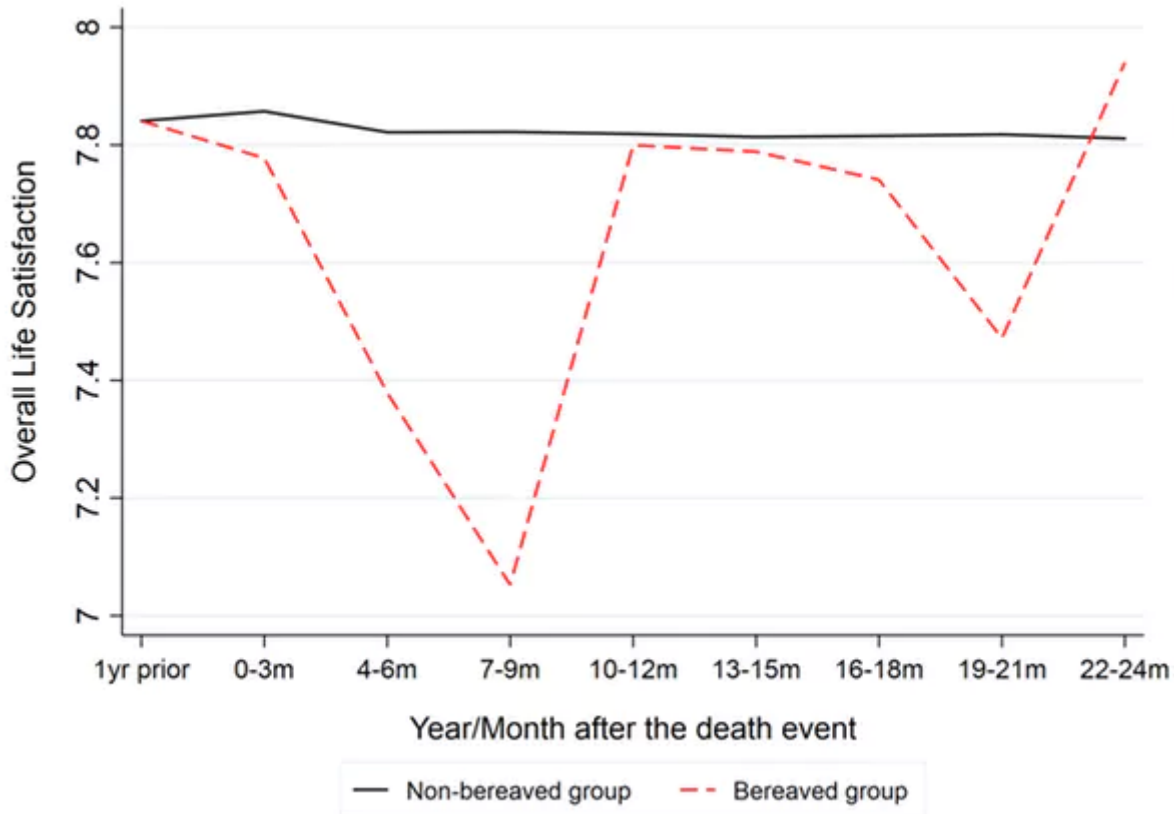


Figure 1. Life satisfaction. Author provided

In the graph below, the impact on general health is shown comparing the bereaved group with a matched non-bereaved group. You can see the bereaved group tracking clearly lower than the non-bereaved for 24 months, an effect that continues for four years.

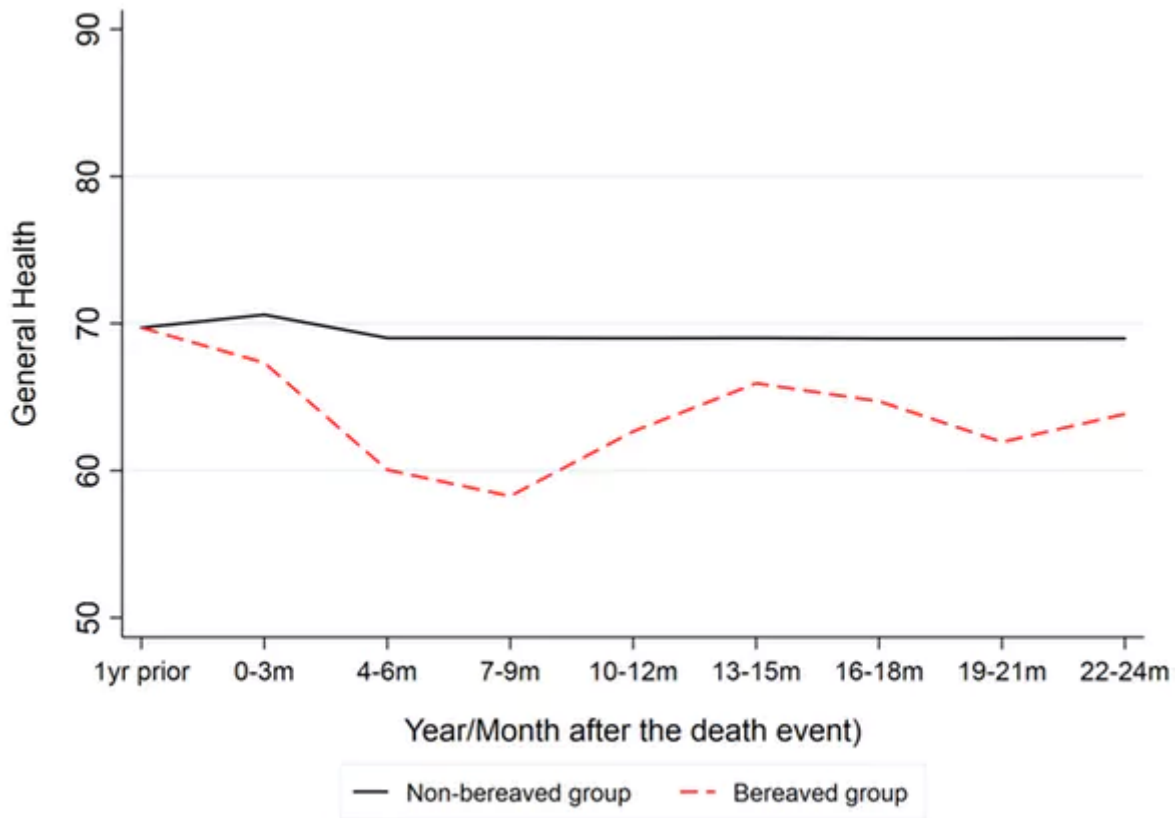


Figure 2. General health. Author provided

Social functioning and mental health are also worse after the death of a friend, which you can see in the final two graphs.

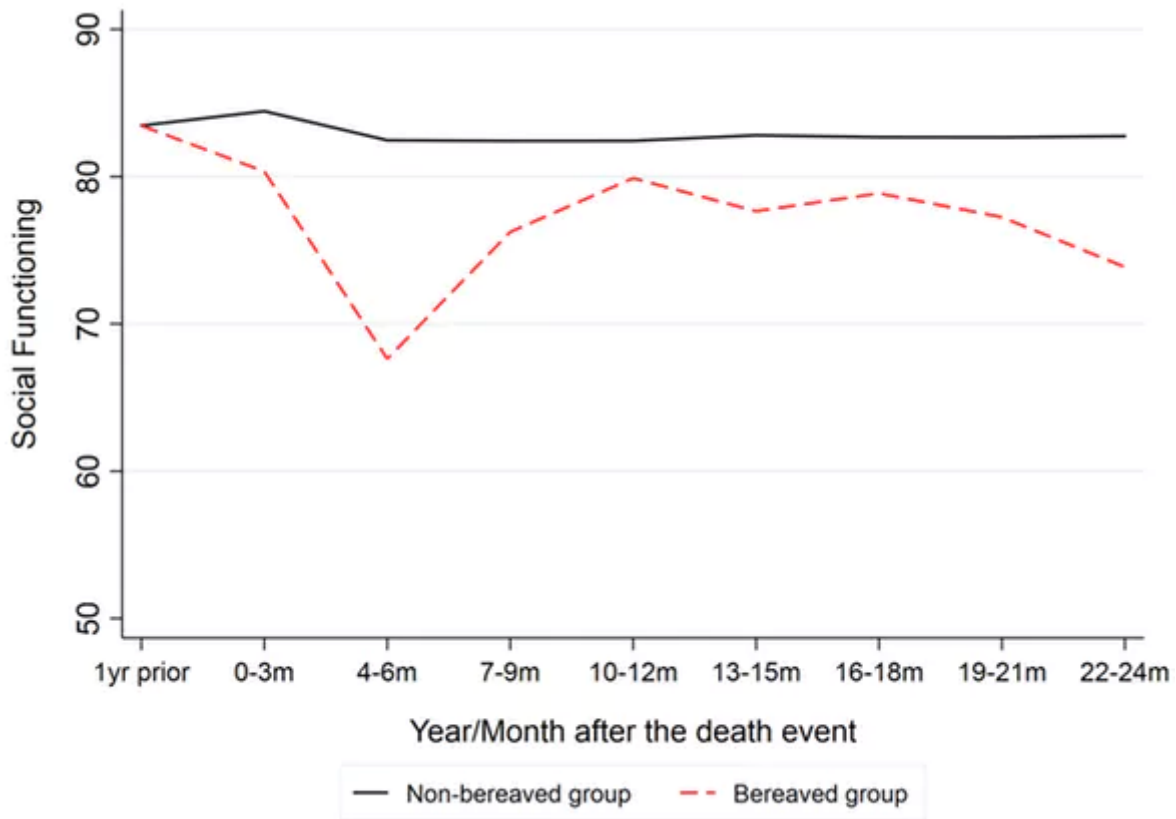


Figure 3. Social functioning. Author provided

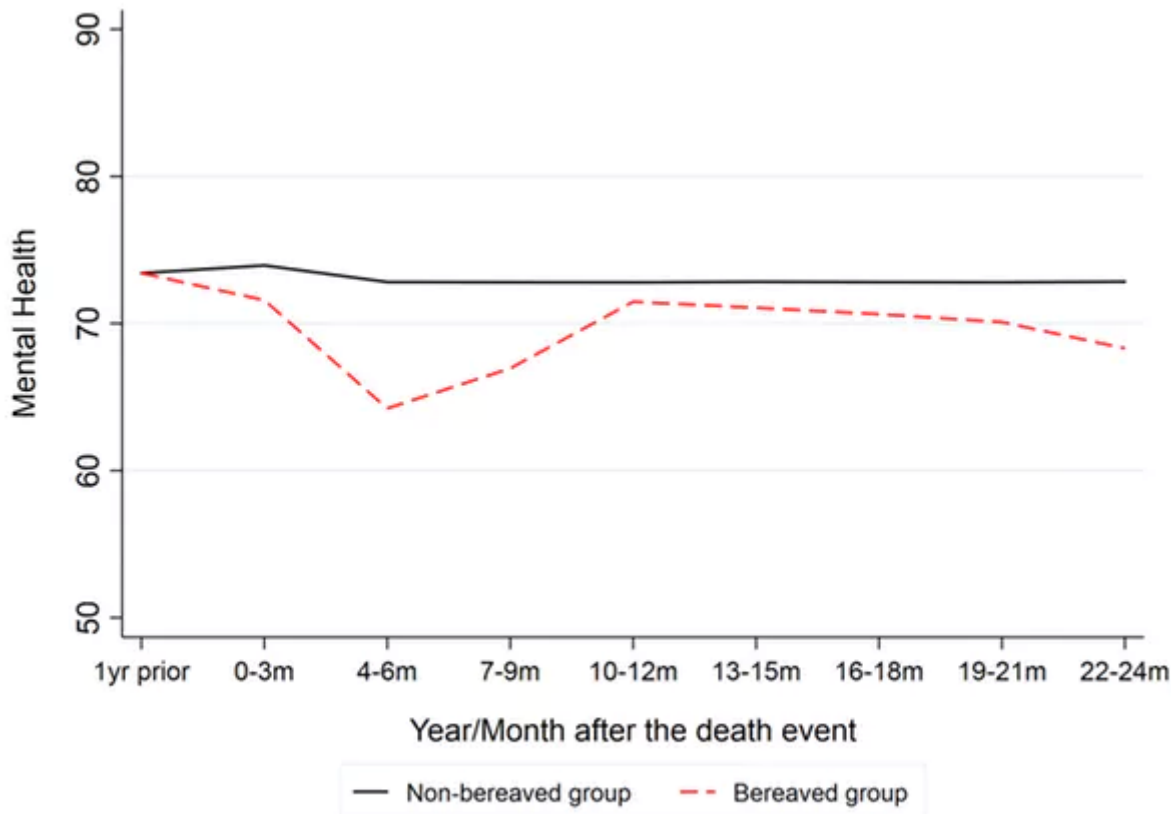


Figure 4. Mental health. Author provided

These findings suggest we need to take the death of a close friend more seriously and to change the way we support people who are suffering from such a bereavement.

Friends are **psychological kin**, that is, you may even have a stronger bond with friends than people you are related to by birth or marriage. So when a friend dies, the psychological and emotional stress can be as bad as the death of kin.

Our analysis shows that if you're not socially active, the death of a friend can make the impact of the bereavement worse. As your social circle shrinks, you become less resilient to grief because you lose a key source of emotional support from your social network.

Challenging the myths

The folklore that feelings of sadness and loss reduce considerably after a year also needs to be challenged. Although there are improvements in health and getting on with everyday life, the longer-term effects on mental health and well-being cannot be ignored. This is especially worrying for disenfranchised grief – not only are there marked and enduring long-term effects, but there's also little recognition that the bereavement was significant.

Mental health professionals and employers should now acknowledge the significant effect the death of a friend can have on a person and offer appropriate services and support. The psychological help bereaved people receive is not the same across the board, and this needs to change as we begin to accept the idea that close friends can be considered as psychological kin.

 [Psychology](#) [Death](#) [Bereavement](#)

Before you go...

The Conversation serves society by making knowledge accessible to all, not just the few. Our only agenda is a better informed public. If you care about what we do, please make a donation now and help secure our future.

[Donate now](#)

Stephen Khan

Editor

