



## RESEARCH NOTE

# Effects of photoperiod and melatonin implants on feed intake in Atlantic salmon (*Salmo salar* L.) postsmolts

Silvia Maiolo,<sup>1</sup> Tom Hansen,<sup>2</sup>  
Giuliana Parisi,<sup>1</sup> Rolf Erik Olsen<sup>2,3</sup>

<sup>1</sup>Dipartimento di Scienze delle Produzioni  
Agroalimentari e dell'Ambiente,  
University of Florence, Italy

<sup>2</sup>Institute of Marine Research, Bergen,  
Norway

<sup>3</sup>Department of Biology, Norwegian  
University of Science and Technology,  
Trondheim, Norway

## Abstract

High melatonin concentrations were expected to negatively affect Atlantic salmon appetite. Hence, individually kept Atlantic salmon postsmolts were subjected to continuous light (24:0, L:L) or natural daylight (12:12, L:D) and then given intraperitoneal implants of slow release melatonin in a 2 by 2 factorial design. Possible effects on food intake were monitored over three weeks. In addition, a plasma melatonin assessment test was run in parallel to monitor diurnal blood levels of melatonin through the trial. The surgical intervention was effective, leading to a 10x increase in mean melatonin levels when compared to control fish, but neither the implant nor the change in daylight had any significant effect on feed intake, at least in the short term.

## Introduction

A good synchronism between the organism's metabolism and the surrounding environment represents a clear advantage in the struggle for existence. The metabolic system of several animals, including salmonids, has rhythmically oscillating mechanisms controlling biological processes that repeat themselves over a period of approximately 24 h. In absence of environmental cues these endogenous oscillators should run close to 24 h, but most of the time they tune and reset in response to a specific external stimulus (Roenneberg *et al.*, 2003). The most typical stimulus is the photoperiod, defined as the ratio of light to dark over a period of 24 h.

Variations in photoperiods are known to affect numerous biological functions in salmon including osmoregulation, smoltification, sexual maturation and growth hormone (Stefansson *et al.*, 1991). Appetite reductions following prolonged periods of darkness and conversely increased feed intake during continuous light is a common feature in Atlantic salmon parr (Skilbrei *et al.*, 1997) and postsmolts (Kråkenes *et al.*, 1991; Harmon *et al.*, 2012). Furthermore, the use of continuous-light regimes during winter and spring leads to enhanced growth and improved feed conversion (Nordgarden *et al.*, 2003; Oppedal *et al.*, 2003). However, an initial appetite and growth-rate reduction were found after the onset of a new photoperiod, probably as a consequence of the stress caused by the environment changing (Endal *et al.*, 2000; Nordgarden *et al.*, 2003; Oppedal *et al.*, 2003).

One possible contributor to these effects is melatonin. Most of the plasma melatonin found in salmon is secreted by the pineal gland, which in turn is directly regulated by photoperiod. During periods with oscillating light and dark phases, the melatonin levels are low during daytime and gradually increase at night. However, under constant darkness the melatonin does not display the free-running rhythms as seen in many other animals and its natural nocturnal rise is abolished (Huang *et al.*, 2010a, 2010b; Migaud *et al.*, 2007; Porter *et al.*, 2001; Randall *et al.*, 1995). Melatonin can also be produced by other tissues like the eyes, but in fairly small quantities and it is uncertain if this melatonin reaches the systemic circulation. The low systemic contribution of the eyes has been proved by the complete abolishment of plasma melatonin level in pinealectomized fish (Porter *et al.*, 1996), while ophthalmectomy has no effect (Migaud *et al.*, 2007). An abrupt increase in plasma melatonin levels may modify the major signals involved in the control of an animal's daily activity, as already observed in Mammals. For instance, single melatonin injections in rat lead to an altered transcription of molecular timing genes' mRNA (Poirel *et al.*, 2003), while a periodic treatment with this hormone causes a significant increase in these clock gene mRNA mean 24-hr levels (Mattam and Jagota, 2014), irrespective of photoperiod. Therefore artificially overriding natural melatonin rhythm by using slow release implants is an interesting method to study the melatonin functions in fish. Unnaturally high hormone concentration could be interpreted by the metabolism as a short daylight duration, thus leading to a decrease in food intake. To date, few experimental evidence supports this hypothesis in

Corresponding author: Prof. Giuliana Parisi,  
Dipartimento di Scienze delle Produzioni  
Agroalimentari e dell'Ambiente, Università di  
Firenze, via delle Cascine 5, 50144, Florence,  
Italy.  
Tel. +39.055.2755590 – Fax: +39.055.321216.  
E-mail: giuliana.parisi@unifi.it

Key words: Atlantic salmon; Melatonin implant;  
Feed intake; Photoperiod.

Acknowledgments: thanks are due to the whole staff of Matre Aquaculture Station for their kindness and skilled technical assistance during the entire work period, to Stian Morken, Marita Larsen, Marsela Alvanopoulou and Anna Concolato for their willingness to help whenever needed, and to Erasmus placement scholarship that financially supported the stage of Silvia Maiolo at Matre.

Received for publication: 1 June 2015.  
Accepted for publication: 15 September 2015.

This work is licensed under a Creative Commons  
Attribution NonCommercial 3.0 License (CC BY-  
NC 3.0).

©Copyright S. Maiolo *et al.*, 2015  
Licensee PAGEPress, Italy  
Italian Journal of Animal Science 2015; 14:4098  
doi:10.4081/ijas.2015.4098

fish – none of each concerning specifically postsmolt salmon (Handeland *et al.*, 2013; Piccinetti *et al.*, 2010) – while, on the other hand, melatonin implanted salmon parr appeared to be significantly larger than the controls one month after the treatment (Porter *et al.*, 1998). However, Handeland *et al.* (2013) suggested that the cause of this discrepancy is probably due to the different experimental protocols used (*e.g.* temperature, fish developmental stage, time of the year). The aim of the present research was to partly fill this gap, focusing on short-term effects of melatonin implants on food intake in Atlantic salmon postsmolts reared either under normal light/dark conditions or continuous-light.

## Materials and methods

### Fish stock and rearing conditions

The trial was run at the Institute of Marine Research (IMR) in Matre (60°N, 5°E, Western Norway). The fish (Aquagen Ltd., Kyrkæsæterøra, Norway) were hatched in autumn 2013. The smoltification was induced

by employing a standard smolt-production model, subjecting parr to 6 weeks of winter signal (12:12, L:D) followed by 6 weeks summer signal (24:0, L:D) and then transferred to seawater. The postsmolts were then acclimated into a circular flow-through seawater tank (21,500 L), where they were maintained under ambient temperature (around 8°C) until use. The fish were fed a commercial extruded diet (Nutra Olympic 3; Skretting AS, Stavanger, Norway) having a high-protein/low-fat ratio [crude protein 47-50%, crude fat 23%, nitrogen-free extract (NFE) 11-13%]. Feeding was performed using feeders (ARVO-TEC T; Arvotec, Huutokoski, Finland), controlled automatically by a PC-operated system together with lighting.

On March 2014, 138 of the postsmolts were randomly sorted and moved into two new facilities, called the Individual Lab. – dedicated to food-intake measuring – and the Melatonin Unit – dedicated to assessing plasma melatonin variations. Photoperiod (LL), water salinity, temperature and feed type were kept constant until the day of the treatment. The treatment was performed when most of the fish reached a stable level of appetite. The morphometric parameters (Table 1) were taken prior to the blood sampling.

### Experiment 1: food intake trend

The Individual Lab. had 16 square, covered tanks (0.5 x 0.5 x 0.28 m). Three fish were moved into each tank on 15<sup>th</sup> March. Once they reached an acceptable level of appetite (around 0.5% of the total body mass) two fish were removed by netting following anaesthetisation with a mild sedative (0.03 mL L<sup>-1</sup> of Aqu-i-s). The remaining 16 fish were fed manually to satiation, with minimal disturbance, twice a day, with the 1<sup>st</sup> feeding starting at 9:00h and the 2<sup>nd</sup> feeding at 15:30h. On 15<sup>th</sup> April, two light regimes (LL and LD) were combined with two treatments (implant or sham implant) in a 2 by 2 factorial design, obtaining 4 different groups composed of 4 fish each. Possible effects on food intake were monitored over 3 weeks. All fish were finally blood sampled on 9<sup>th</sup> of May.

### Experiment 2: plasma melatonin trend

The Melatonin Unit was composed of 3 square, covered tanks (1.5 x 1.5 x 0.47 m), containing 30 fish each. Fish were fed using an automatic feeder (feeding time: 8.30-10.30 and 13.30-15.30). On 24<sup>th</sup> April, fish in two tanks were implanted with melatonin, while fish in the last tank were given a sham implant (punctured by the needle but not injected). One day

(24h) later 3 fish were randomly collected from each tank, anaesthetized and blood collected for melatonin analysis. The photoperiod was then changed from LL to LD in one melatonin group and in the sham group. Further blood samples were taken every 7<sup>th</sup> day over three consecutive weeks (4 time points: 1-8-15-22 days after the treatment, as shown in Table 1). The delayed change in the photoperiod allowed to use the control tank for both the control groups: the first sampling provided the values of the Control-LL (Ctrl-LL) treatment (whose melatonin concentration was expected not to change over the span of 3 weeks), while all the following samplings furnished the concentration of the Control-LD (Ctrl-LD) group.

### Implant and blood sampling protocol

The method adopted is automated, minimally invasive and fairly similar to the procedure used when tagging fish with PIT tags. Prior to implant, all fish were firstly mildly sedated in the tanks (0.02 g/L of Finquel) and then completely anesthetised in 0.1 g/L of Finquel. The melatonin pellet (REGULIN; Schering Agrochemicals, Alexandria, Australia) was implanted in the rear peritoneum after incising with a scalpel (no.11) a thin tissue layer on the left side of the animal between the anal and ventral fins, well below the lateral line. The surgical cut was necessary to create a way for the subsequent introduction of the needle. A pre-test followed by necroscopy was performed to check possible tissue damages and to verify the absorption of the melatonin pellet by the gastrointestinal walls.

After netting and anesthetizing the fish with an overdose of anaesthesia, blood was collected via the caudal dorsal aorta in 2 mL heparinized syringes under comparable light and time regime (always between 13:00h and 14:00h). Plasma samples were separated by centrifugation (13,200 rpm for 90s at 4°C) and stored at -80°C until assayed for melatonin. The experiment was approved according to *The Regulations in Animal Experimentation* in Norway and carried out by certified personnel.

### Appetite and melatonin assessment

The feed intake in the individual tanks was calculated as the difference between fed-pellets and recovered uneaten-pellets (pellets collected in a sieve from outlet water). The daily fish biomass was calculated according to the following formula, based on Bagenal and Tesch studies (1978):

$$W_{\text{day } n} = W_{\text{day } n-1} + W_{\text{day } n-1} \times \frac{\ln(W_f) - \ln(W_i)}{\text{no. of days}}$$

where ( $W_i$ ) and ( $W_f$ ) are the initial and final weights respectively, and day n and day n-1 indicates a particular day and its preceding day. After having converted the number of eaten-pellets into grams and having calculated the Daily individual appetite as  $\frac{\text{feed eaten}}{\text{fish biomass}} \times 100$ , the Deviation from the average appetite (*i.e.* the average value of the last 5 days prior the treatment) was determined. Feed Intake was therefore calculated as the positive or negative deviation from this value.

The hormone concentration was assessed using the Melatonin ELISA (RE54021; IBL International GMBH, Hamburg, Germany), an enzyme immunoassay for the in-vitro diagnostic quantitative determination of melatonin in plasma. The kit was used as outlined by the producer and the optical density (OD) was measured with a photometer at 405 nm. The Standards were analysed in duplicates. All samples from implanted fish were diluted with diluted Wash Buffer prior to analysis. All data are given as melatonin  $\mu\text{g mL}^{-1}$  of plasma.

### Statistical analysis

Statistical analysis of the melatonin data were performed using IBM SPSS Statistics (IBM Corp., 2013), while analysis of the feed-intake was done with R software (R CORE TEAM, 2013). Mann-Whitney U test was used to check possible significant differences within the 5 melatonin values of each time-point. The average intake values of each treatment were compared 3 weeks after the treatment through an ANOVA test, while within each group the intake-variation (that is the comparison of the average appetite prior to the treatment with the appetite 3 weeks later) was assessed with a paired t-test. The initial weight homogeneity of the four fish groups was tested with an ANCOVA test (combining a regression analysis and an ANOVA). This calculation was necessary to make sure that the initial weight did not affect the individual treatment reaction and, consequently, the feed intake performance.

## Results

### Plasma melatonin trend

A good fit of the immunoassay Standards obtained was provided by a four parameters Marquardt curve, as shown in Figure 1. Individual Lab. values 3 weeks after the treatment had a good fit with the results from the Melatonin Unit (Figure 2). It can therefore be

assumed that the release rates of the individual fish would be the same. The implant treatment lead to melatonin values between 1500 and 4500  $\mu\text{g mL}^{-1}$  in fish subjected to continuous light (LL) and between 500 and 3500  $\mu\text{g mL}^{-1}$  in the LD group. Control fish always showed melatonin concentrations below 220  $\mu\text{g mL}^{-1}$ . In all charts there was a slight downward trend over time indicating exhaustion of the implants. The melatonin concentration of the Ctrl-LL group was assumed not to change over time due to the absence of both an artificial hormone raise and a light-darkness alternation.

### Food intake trend

With the exception of a few tanks, the deviation from the average intake (average of the last 5 days prior the treatment) appeared to be located within a small range: -1% immediately after the implant and +1% 22 days later (Figure 3). The general trend showed an initial small appetite decrease due to surgery followed by a quick recovery and a food intake stabilisation, particularly evident in the two control groups. Only two fish (n. 5 and n. 14) did not recover and their appetite gradually diminished after 2 weeks.

There were no statistical significant differences in appetite between the 4 treatments except for the Implant-LD group, where there was a tendency to strong variation in appetite. There did not appear to be any relationship between plasma melatonin at final sampling and feeding history of the fish.

### Relationship biomass-melatonin

All Control fish had melatonin values below 220  $\mu\text{g mL}^{-1}$ , independently from their biomass (Figure 4). No relationships between weight and melatonin were observable within the Implant groups as well.

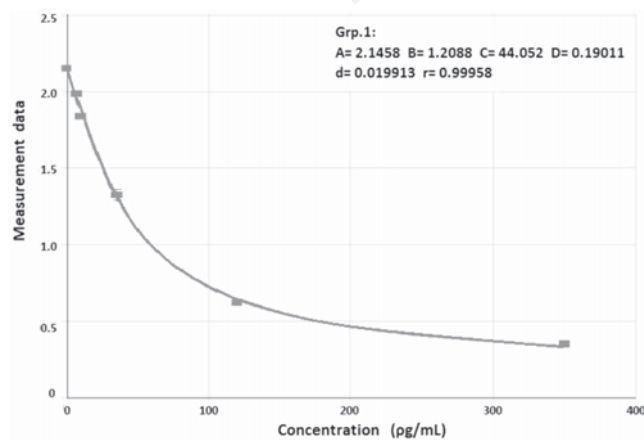


Figure 1. Standard curve of the melatonin concentration, obtained with the ELISA immunoassay.

### Relationship photoperiod-melatonin

Photoperiod did not appear to have any effect on the melatonin level over the 3 weeks of observation (Figure 5): comparing the Individual Lab. melatonin concentrations

through the ANOVA test, the two Control groups resulted to be perfectly comparable ( $P=0.50$ ). The comparison between the two Implanted groups furnished a similar result ( $P=0.47$ ), even if their values fell into a wider range (200-1800  $\mu\text{g mL}^{-1}$ ).

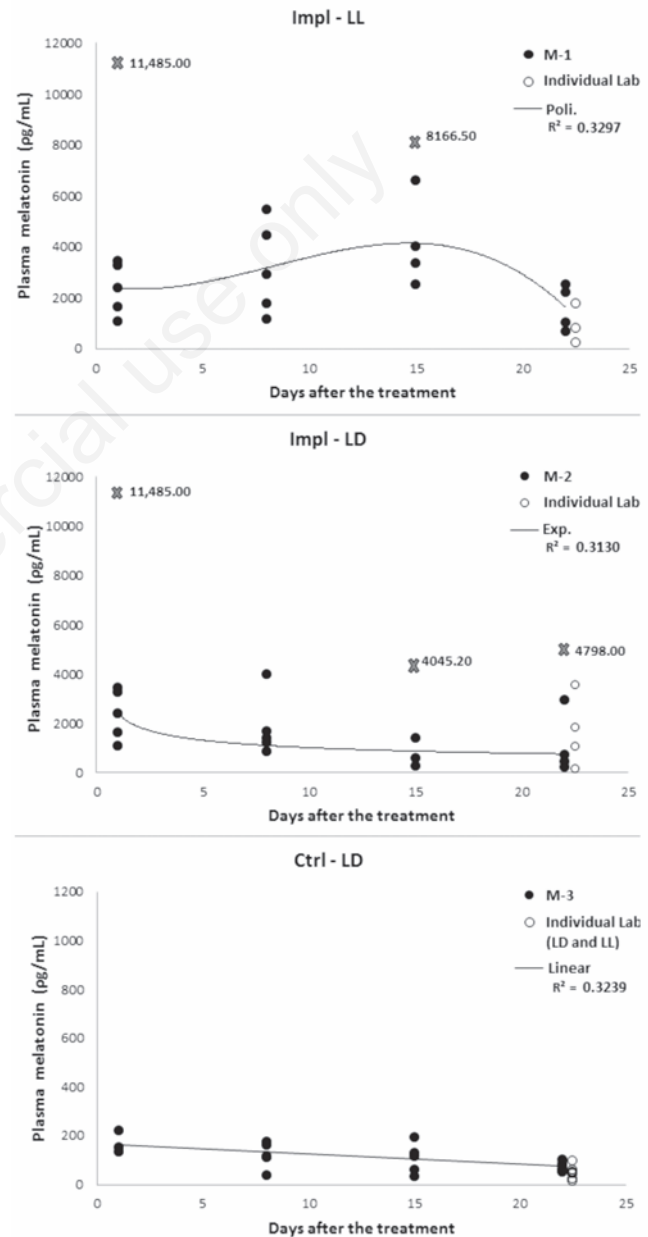


Figure 2. Melatonin trend through 3 weeks after the treatment. All the data represented with a cross were considered outlier and were not used in the drawing of the trend-line. In chart M-3, both Ctrl-LD and Ctrl-LL groups of the Individual Lab. are plotted.

## Discussion

### Melatonin trend

The diurnal melatonin concentration is known not to change over time (Migaud *et al.*, 2006; Porter *et al.*, 2001; Randall *et al.*, 1995), therefore hormone levels during both the feeding sessions are well represented by the levels

assessed between 13:00h and 14:00h. Moreover the comparison of the current results with previous studies on Atlantic salmon postsmolts is possible, since – according to both the results of the present study and the finding of Porter *et al.* (2001) – the three critical variables photoperiod, fish size and temperature profiles show to have no effect on melatonin concentration in the day-

light. In both Control groups the diurnal melatonin levels were, indeed, below  $200 \mu\text{g mL}^{-1}$  irrespective of photoperiod, confirming previous results in Atlantic salmon parr (Porter *et al.*, 2001) and postsmolts (Migaud *et al.*, 2006; Randall *et al.*, 1995). Implanted fish show melatonin concentrations ten times higher, but no research has been published on this topic yet.

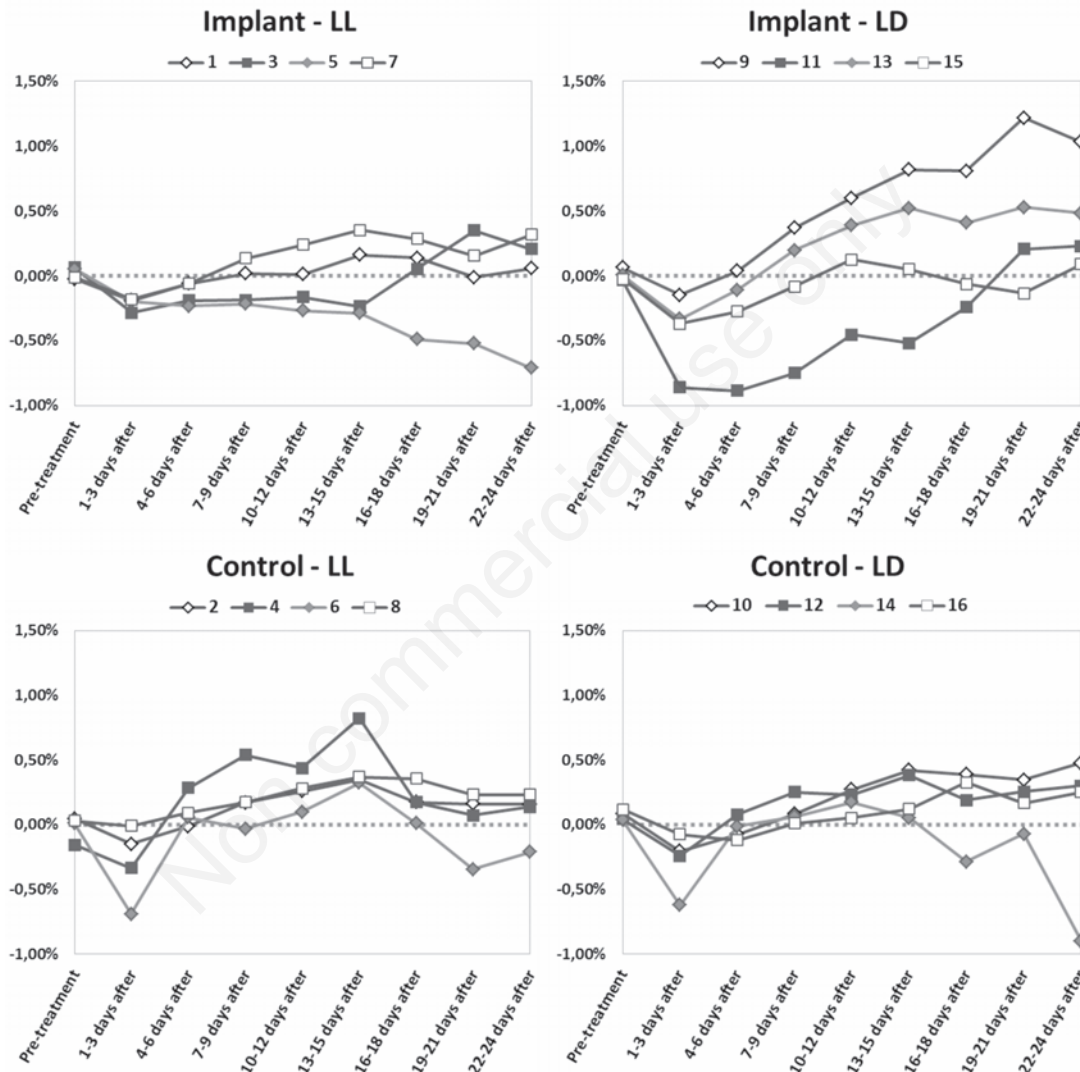


Figure 3. Deviation from the average intake (zero value of the Y axis) calculated on a 3-days basis in the Individual-Lab tanks, sequentially numbered from 1 to 16.

Table 1. Morphometric parameters of the melatonin unit's tanks obtained from the last groups sampled, 3 weeks after the injection.

Group name	Treatment	Photoperiod	Samples, n	Body weight, g (mean±SD)	Length, cm (mean±SD)
Individual lab.	Implant/control	LL/LD	16	220.88±46.70	26.46±1.92
M-1	Implant	LL	3+5+5+5	223.40±37.79	27.16±1.34
M-2	Implant	LD	3+5+5+5	249.00±99.46	27.54±3.41
M-3	Control	LD	3+5+5+5	222.00±29.13	26.90±1.06

SD, standard deviation; LL, 24:0 (light:dark); LD, 12:12 (light:dark); M, melatonin unit's tank.



### Appetite trend

The present results show that postsmolt metabolism did not respond as expected neither to artificial melatonin increase nor to changes in light conditions: rather than lowering their appetite, all groups had a similar stable intake over the 3 weeks of study.

These findings confirm the results of Porter *et al.* (1998) and contrast with the other two publications mentioned in the Introduction (Handeland *et al.*, 2013; Piccinetti *et al.*, 2010). One plausible explanation is that the present work represents the first study about effects of melatonin implant on Atlantic salmon postsmolts, while Porter *et al.* (1998) and Handeland *et al.* (2013) researches concerned

smoltifying subjects and Piccinetti *et al.* (2010) focused on zebra fish. Therefore the observed similarities and discrepancies might be due to both the different species and protocols used.

### Conclusions

The surgical method adopted was successful: the implant was highly effective and almost all the subjects recovered well after the treatment. However, both implanted and control fish quickly regained their pre-test appetite, showing a similar intake over the 3

weeks of study. The present research proved that both photoperiod and diurnal plasma melatonin concentration do not affect food-intake in post-smolt Atlantic salmon in the short term. However, researches over a longer observation period are required before drawing any kind of conclusion.

### References

Bagenal, T.B., Tesch, F.W., 1978. Age and growth. In: T.B. Bagenal (ed.) *Methods for assessment of fish production in freshwaters*, 3rd ed. Blackwell Scientific Publications, Oxford, UK, pp 101-136.

Endal, H.P., Taranger, G.L., Stefansson, S.O., Hansen, T., 2000. Effects of continuous additional light on growth and sexual maturity in Atlantic salmon, *Salmo salar*, reared in sea cages. *Aquaculture* 191:337-349.

Handeland, S.O., Imsland, A.K., Björnsson, B.T., Stefansson, S.O., Porter, M., 2013. Physiology during smoltification in Atlantic salmon: effect of melatonin implants. *Fish Physiol. Biochem.* 39:1079-1088.

Harmon, P.R., Peterson, R.H., Glebe, B.D., 2012. The effect of photoperiod on growth and maturation of Atlantic salmon (*Salmo salar*) in the Bay of Fundy. Available from: <http://publications.gc.ca/pub?id=476394&sl=0>

Huang, T.S., Ruoff, P., Fjelldal, P.G., 2010a. Diurnal expression of clock genes in pineal gland and brain and plasma levels of melatonin and cortisol in Atlantic salmon parr and smolts. *Chronobiol. Int.* 27:1697-1714.

Huang, T.S., Ruoff, P., Fjelldal, P.G., 2010b. Effect of continuous light on daily levels of plasma melatonin and cortisol and expression of clock genes in pineal gland, brain, and liver in Atlantic salmon postsmolts. *Chronobiol. Int.* 27:1715-1734.

IBM Corp., 2013. IBM SPSS statistics for Windows, Version 22.0. IBM Corporation, Armonk, NY, USA.

Kråkenes, R., Hansen, T., Stefansson, S.O., Taranger, G.L., 1991. Continuous light increases growth rate of Atlantic salmon (*Salmo salar* L.) postsmolts in sea cages. *Aquaculture* 95:281-287.

Mattam, U., Jagota, A., 2014. Differential role of melatonin in restoration of age-induced alterations in daily rhythms of expression of various clock genes in suprachiasmatic nucleus of male Wistar rats.

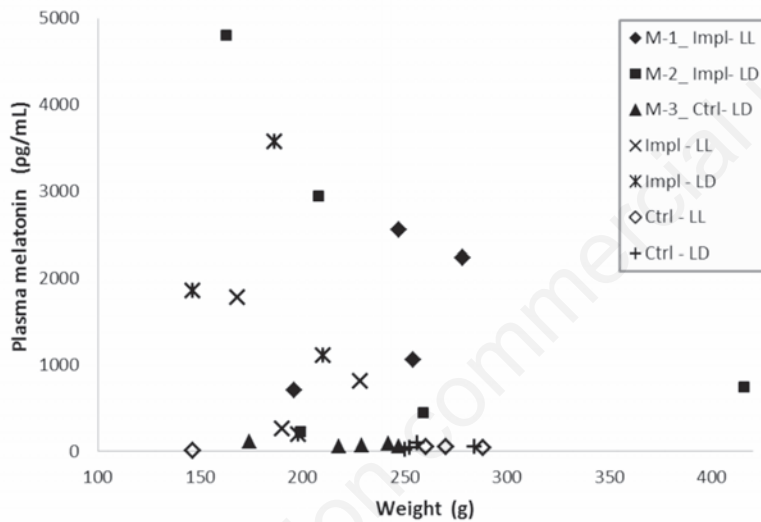


Figure 4. Relation between fish biomass and melatonin concentration 3 weeks after the treatment.

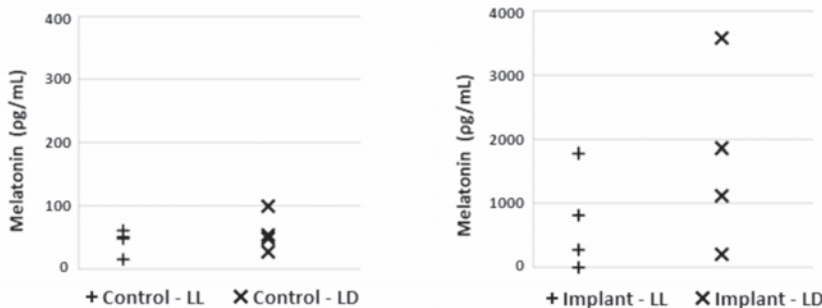


Figure 5. The photoperiod effect in the Individual Lab. 3 weeks after the treatment. One Impl-LL fish had a melatonin value out of range (<min) and was plotted on the X axis of the chart, as if it had a null value.

- Biogerontology 15:257-268.
- Migaud, H., Davie, A., Martinez Chavez, C.C., Al-Khamees, S., 2007. Evidence for differential photic regulation of pineal melatonin synthesis in teleosts. *J. Pineal Res.* 43:327-335.
- Migaud, H., Taylor, J.F., Taranger, G.L., Davie, A., Cerdá-Reverter, J.M., Carrillo, M., Hansen, T., Bromage, N.R., 2006. A comparative ex vivo and in vivo study of day and night perception in teleosts species using the melatonin rhythm. *J. Pineal Res.* 41:42-52.
- Nordgarden, U., Oppedal, F., Taranger, G.L., Hemre, G.I., Hansen, T., 2003. Seasonally changing metabolism in Atlantic salmon (*Salmo salar* L.) I. Growth and feed conversion ratio. *Aquacult. Nutr.* 9:287-293.
- Oppedal, F., Taranger, G.L., Hansen, T., 2003. Growth performance and sexual maturation in diploid and triploid Atlantic salmon (*Salmo salar* L.) in seawater tanks exposed to continuous light or simulated natural photoperiod. *Aquaculture* 215:145-162.
- Piccinetti, C.C., Migliarini, B., Olivotto, I., Coletti, G., Amici, A., Carnevali, O., 2010. Appetite regulation: the central role of melatonin in *Danio rerio*. *Horm. Behav.* 58:780-785.
- Poirel, V.J., Boggio, V., Dardente, H., Pevet, P., Masson-Pevet, M., Gauer, F., 2003. Contrary to other non-photoc cues, acute melatonin injection does not induce immediate changes of clock gene mRNA expression in the rat suprachiasmatic nuclei. *Neuroscience* 120:745-755.
- Porter, M.J.R., Duncan, N., Handeland, S.O., Stefansson, S.O., Bromage, N.R., 2001. Temperature, light intensity and plasma melatonin levels in juvenile Atlantic salmon. *J. Fish Biol.* 58:431-438.
- Porter, M.J.R., Randall, C.F., Bromage, N.R., 1996. The effect of pineal removal on circulating melatonin levels in Atlantic salmon parr. *J. Fish Biol.* 48:1011-1013.
- Porter, M.J.R., Randall, C.F., Bromage, N.R., Thorpe, J.R., 1998. The role of melatonin and the pineal gland on development and smoltification of Atlantic salmon (*Salmo salar*) parr. *Aquaculture* 168:139-155.
- R Core Team, 2013. R: a language and environment for statistical computing. R Foundation for Statistical Computing, Vienna, Austria. Available from: <http://www.r-project.org/>
- Randall, C.F., Bromage, N.R., Thorpe, J.E., Miles, M.S., Muir, J.S., 1995. Melatonin rhythms in Atlantic salmon (*Salmo salar*) maintained under natural and out-of-phase photoperiods. *Gen. Comp. Endocr.* 98:73-86.
- Roenneberg, T., Daan, S., Merrow, M., 2003. The art of entrainment. *J. Biol. Rhythms* 18:183-194.
- Skilbrei, O.T., Hansen, T., Stefansson, S.O., 1997. Effects of decreases in photoperiod on growth and bimodality in Atlantic salmon *Salmo salar* L. *Aquac. Res.* 28:43-49.
- Stefansson, S.O., Björnsson, B.T., Hansen, T., Haux, C., Taranger, G.L., Saunders, R.L., 1991. Growth, parr-smolt transformation, and changes in growth hormone of Atlantic Salmon (*Salmo salar*) reared under different photoperiods. *Can. J. Fish. Aquat. Sci.* 48:2100-2108.