

Syracuse University

SURFACE

Architecture Thesis Prep

School of Architecture Dissertations and
Theses

Fall 2018

Relink Tangible and Intangible

Weibin Lao
Syracuse University

Xiaobai Zhao
Syracuse University

Follow this and additional works at: https://surface.syr.edu/architecture_tpreps



Part of the [Architecture Commons](#)

Recommended Citation

Lao, Weibin and Zhao, Xiaobai, "Relink Tangible and Intangible" (2018). *Architecture Thesis Prep*. 369.
https://surface.syr.edu/architecture_tpreps/369

This Thesis Prep is brought to you for free and open access by the School of Architecture Dissertations and Theses at SURFACE. It has been accepted for inclusion in Architecture Thesis Prep by an authorized administrator of SURFACE. For more information, please contact surface@syr.edu.

Relink Tangible and Intangible

Weibin Lao & Xiaobai Zhao

PRIMARY ISSUES

Cultural Heritage (Traces of Industrial History that Made Syracuse Prosper)

To understand the value of industries in forming the upstate New York's culture, and how contemporary cultures can be revitalized by the commemoration of the past.

Urban Infrastructure (Canal, Boulevard)

To impose notable proposal of architecture and to speculate new public improvements on to a continuous urban transportation infrastructure.

Spatial Translation (Machine, Manufacturing Procedure, Architecture)

To suggest a methodology for translating and connecting between the object, system, and space under the characteristic discipline of an specific industry.

PRIMARY ISSUES

Cultural Heritage (Traces of Industrial History that Made Syracuse Prosper)

To understand the value of industries in forming the upstate New York's culture, and how contemporary cultures can be revitalized by the commemoration of the past.

Urban Infrastructure (Canal, Boulevard)

To impose notable proposal of architecture and to speculate new public improvements on to a continuous urban transportation infrastructure.

Spatial Translation (Machine, Manufacturing Procedure, Architecture)

To suggest a methodology for translating and connecting between the object, system, and space under the characteristic discipline of an specific industry.

Roman Culture Heritage

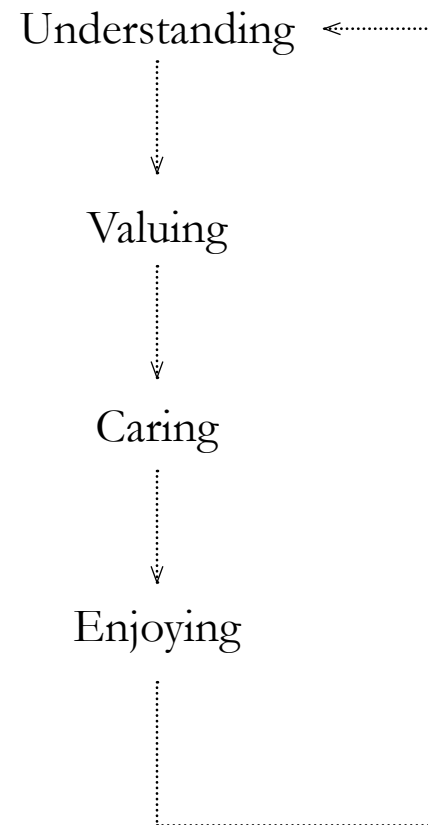


Renaissance Culture Heritage



How can our industrial past be a valuable culture heritage that will benefit to public?

HERITAGE CYCLE



CULTURAL HERITAGE

Cultural heritage is a legacy, composed of **physical artifacts(tangible culture)** and **intangible attributes**, that inherit from past generations of the society, maintained in the present and bestowed for the benefit of future generations.

Cultural heritage includes:

Tangible Culture

(such as buildings, monuments, landscapes, books, works of art, and artifacts)

Intangible Attributes

(such as mood, feelings, attitude and qualitative condition)

Tangible Culture

Unoccupied Structures

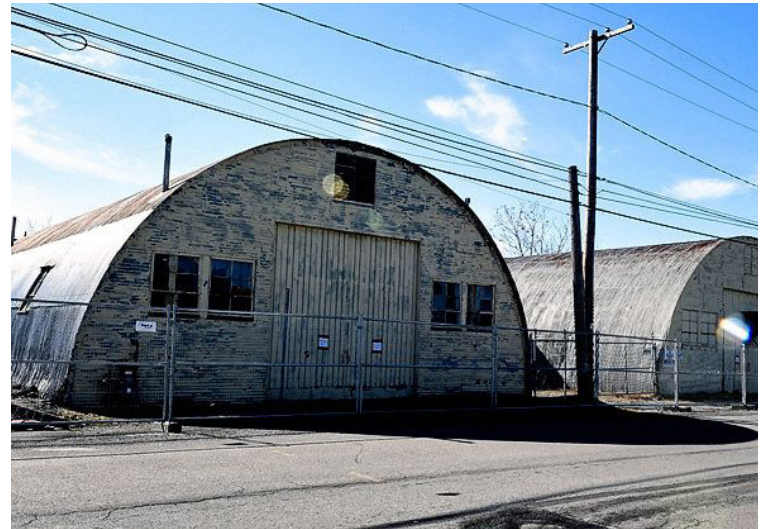
Monuments

Artifacts

Unoccupied Structures



Dick Blume/The Post Standard The Gear Factory ,
West Fayette and South Geddes St.



Part of Syracuse Lithographing Co
Quonset huts at 163 Solar St.



Clark Concrete, an old mixing plant,
Solar and Van Rensselaer Sts. Ellen M.



the Easy Washing Machine factory building,
Solar and Spencer St.

Artifacts



Brannock Device



*Part of Syracuse Lithographing Co
Quonset huts at 163 Solar St.*



*Clark Concrete, an old mixing plant,
Solar and Van Rensselaer Sts. Ellen M.*



*the Easy Washing Machine factory building,
Solar and Spencer Sts.*

Monuments



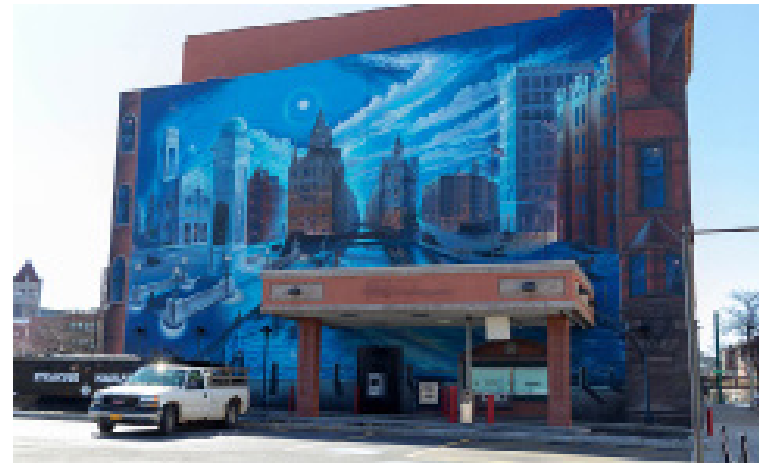
Salt Museum, 106 Lake Dr, Liverpool, NY 13088



*Canal Museum
318 Erie Blvd E, Syracuse*



*Everson Museum
401 Harrison St, Syracuse*



*Mural
Downtown Syracuse*

Intangible Attributes

Atmospheric Condition

Working Condition

Social Hierarchy

Living Status

Atmosphere



Working Condition



Social Hierarchy



Living Status



PRIMARY ISSUES

Cultural Heritage (Traces of Industrial History that Made Syracuse Prosper)

To understand the value of industries in forming the upstate New York's culture, and how contemporary cultures can be revitalized by the commemoration of the past.

Urban Infrastructure (Canal, Boulevard)

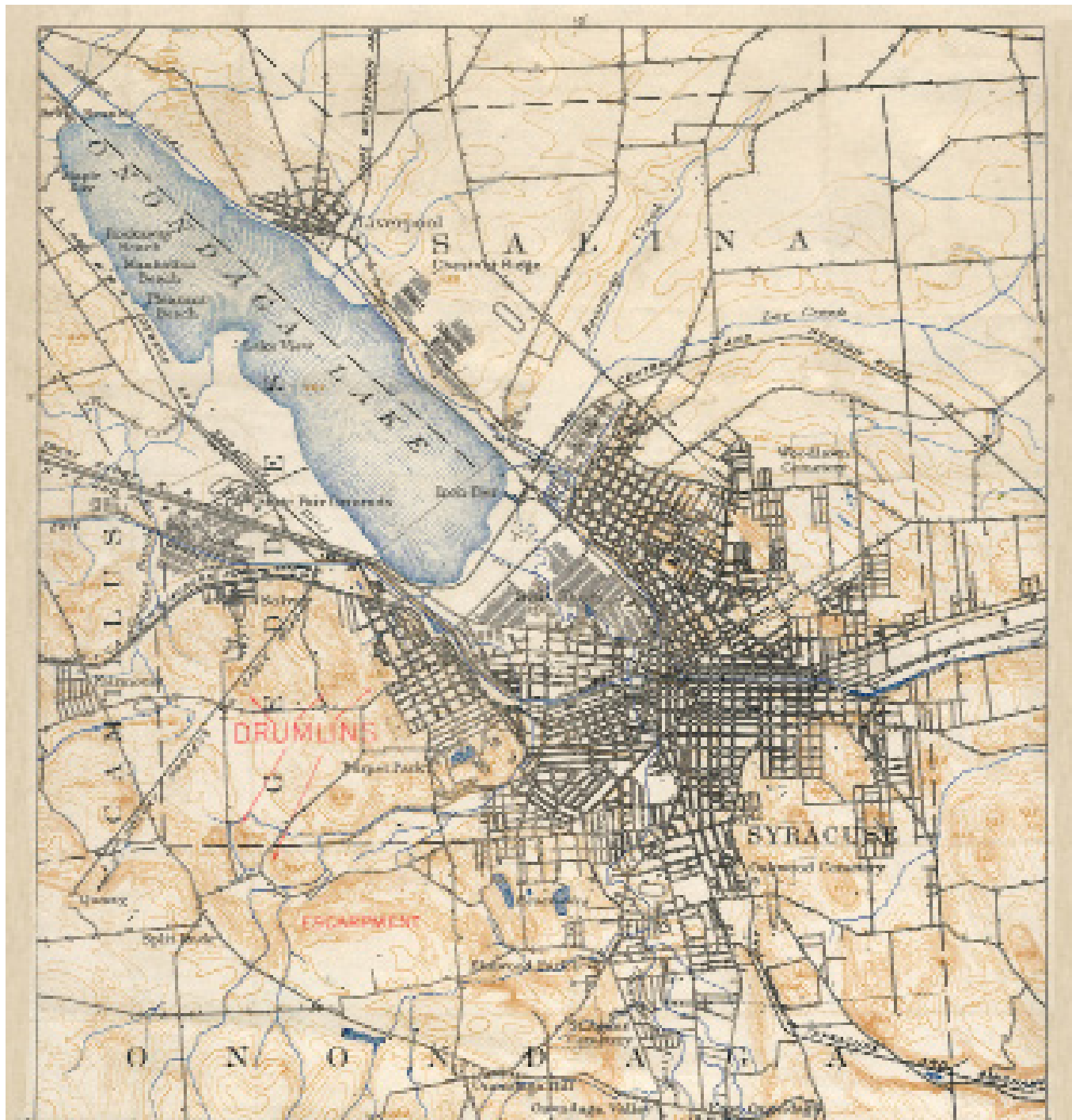
To impose notable proposal of architecture and to speculate new public improvements on to a continuous urban transportation infrastructure.

Spatial Translation (Machine, Manufacturing Procedure, Architecture)

To suggest a methodology for translating and connecting between the object, system, and space under the characteristic discipline of an specific industry.

URBAN INFRASTRUCTURE

Infrastructure refers to the fundamental facilities and systems **servicing a country, city, or other area**, including the services and facilities necessary for its economy to function. Infrastructure is composed of public and private physical improvements such as roads, bridges, tunnels, water supply, sewers, electrical grids, and telecommunications (including Internet connectivity and broadband speeds). In general, it has also been defined as “the physical components of interrelated systems providing commodities and services essential **to enable, sustain, or enhance societal living conditions**”.

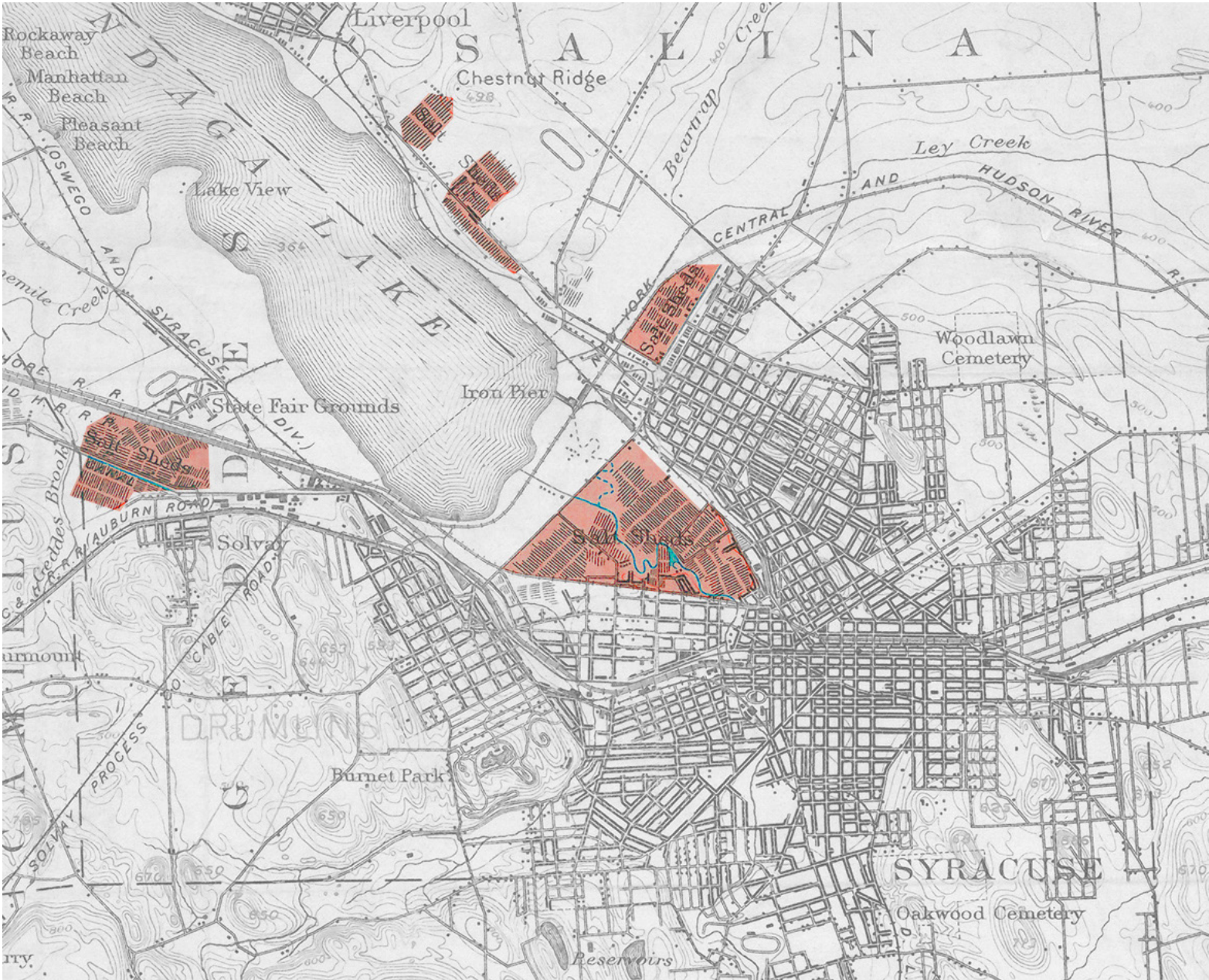






Census Year	Syracuse Population
1820 Erie Canal reaches Syracuse	250
1825 Erie Canal opens statewide	600
1830 Enlargement of Canall begins	11,014
1850 Syracuse incorporated as a city (1848)	22,271
1865 Civil War ends	31,784
1920 Downtown Syracuse stretch of canal abandoned when Barge Canal (1918) passes north through Oneida Lake	171,717

Erie Canal



Erie Boulevard



PRIMARY ISSUES

Cultural Heritage (Traces of Industrial History that Made Syracuse Prosper)

To understand the value of industries in forming the upstate New York's culture, and how contemporary cultures can be revitalized by the commemoration of the past.

Urban Infrastructure (Canal, Boulevard)

To impose notable proposal of architecture and to speculate new public improvements on to a continuous urban transportation infrastructure.

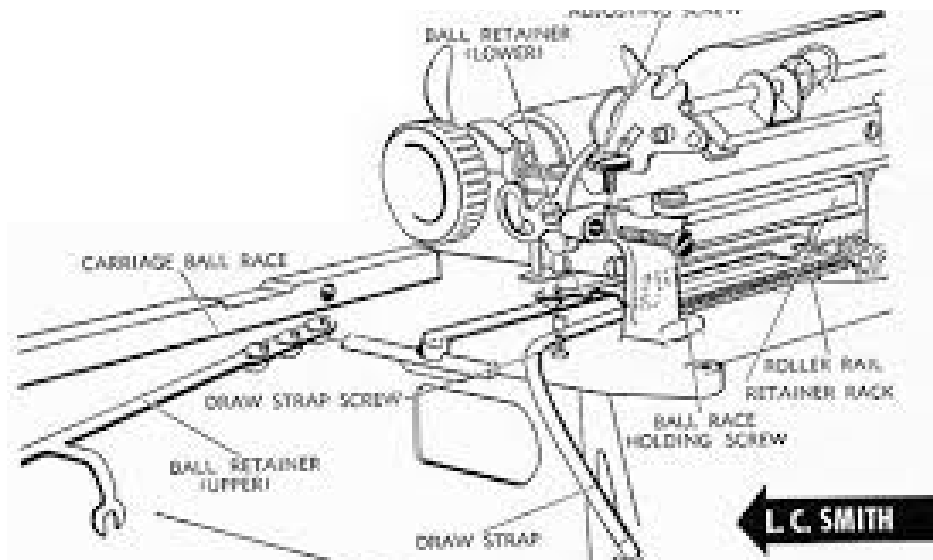
Spatial Translation (Machine, Manufacturing Procedure, Architecture)

To suggest a methodology for translating and connecting between the object, system, and space under the characteristic discipline of an specific industry.

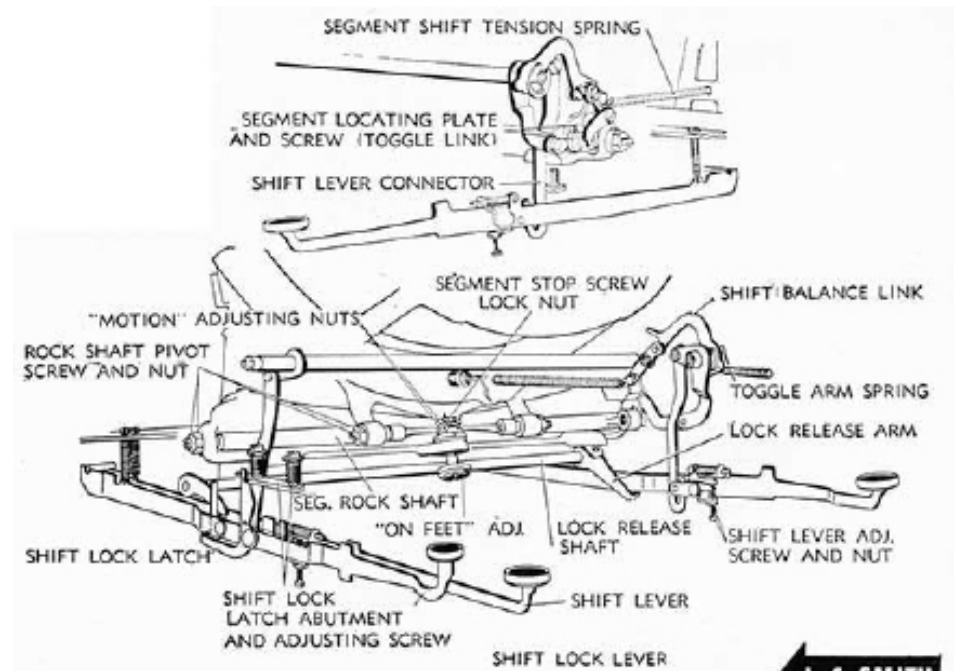
SPATIAL TRANSLATION

Converting the tangible and intangible qualities of an object or a system into an architectural ambition.

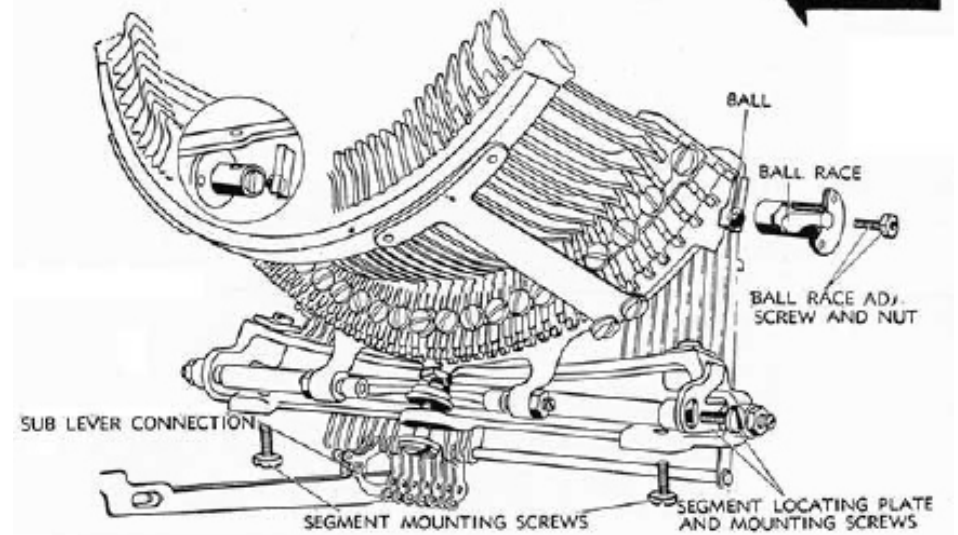
Machine



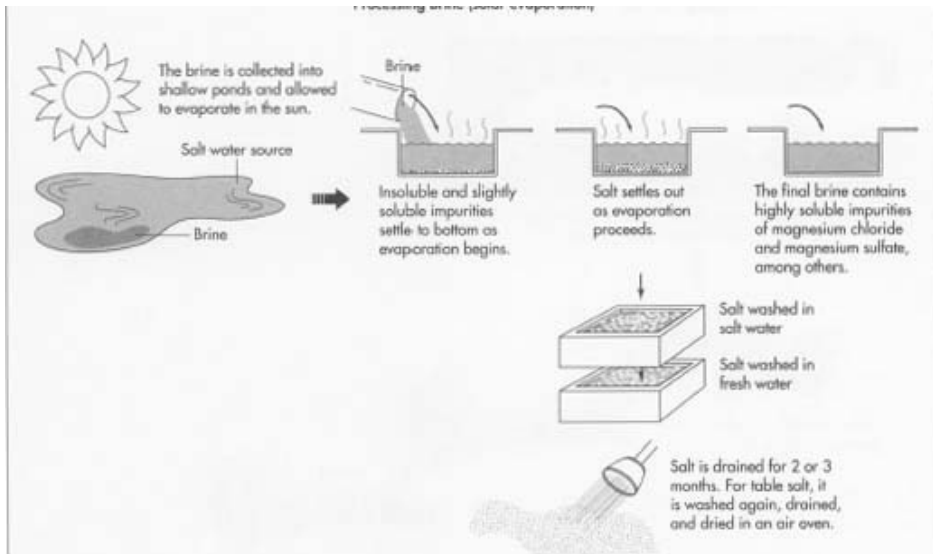
L. C. SMITH



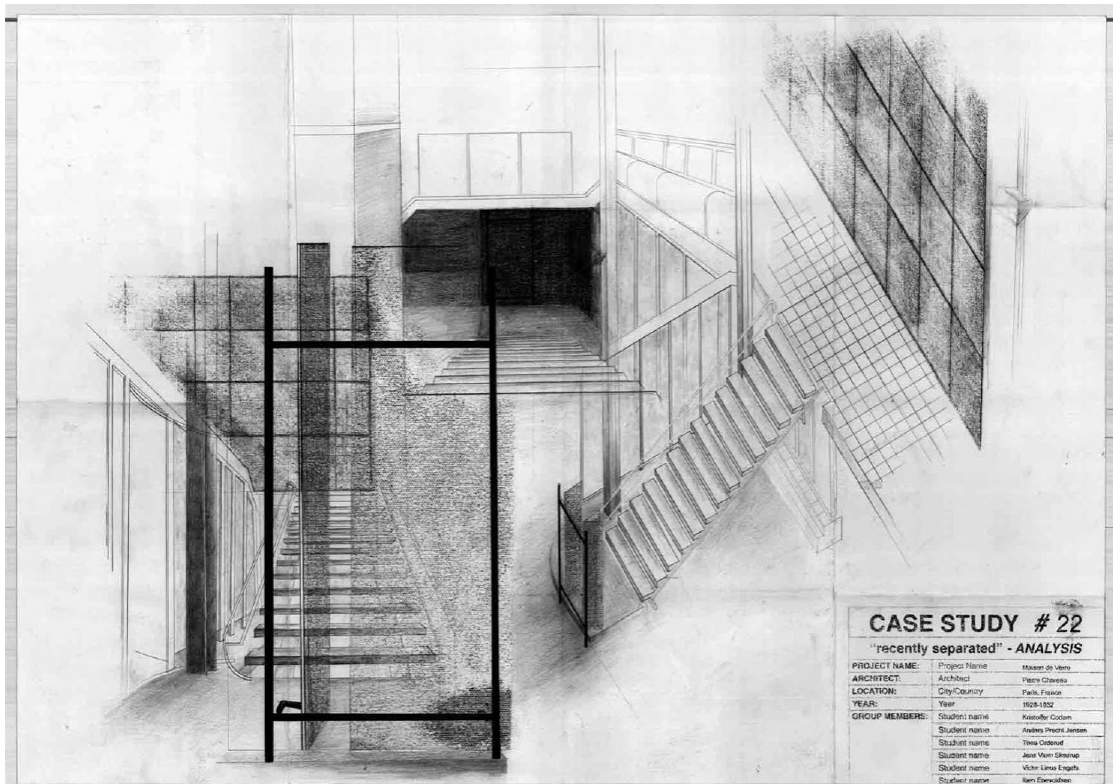
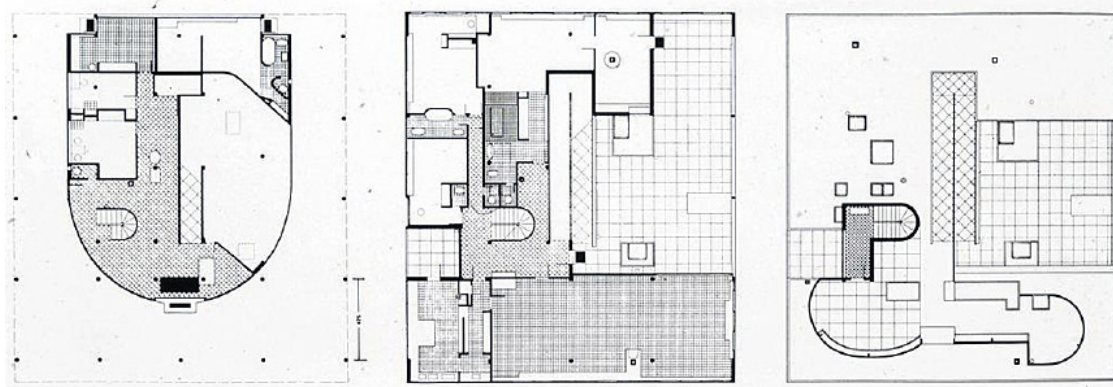
L. C. SMITH



Process



Translation to Architecture



Manifesto

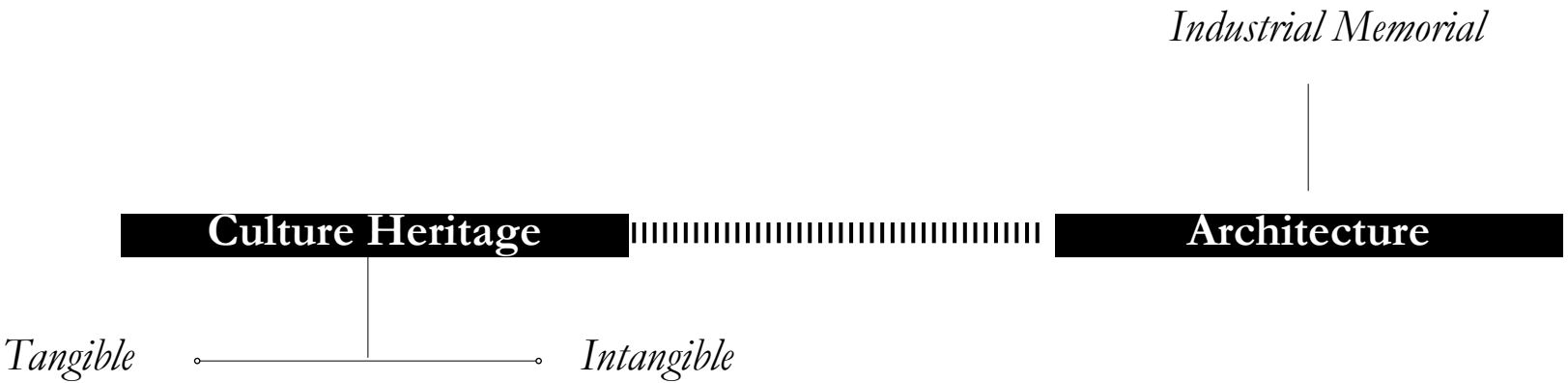
Culture heritage is a combination of tangible traces of history and intangible attributes. Although in most condition, only the tangible artifacts were able to remain and sustain, the intangible qualities were lost and became obsolete. To have a broader understanding and sophisticated experience of such past and history, the combination and connection between the tangible and intangible became critical and significant. Architecture, as a device that can both protect and revitalize such cultural heritage, is to mediate and to link the tangible and intangible part of history.

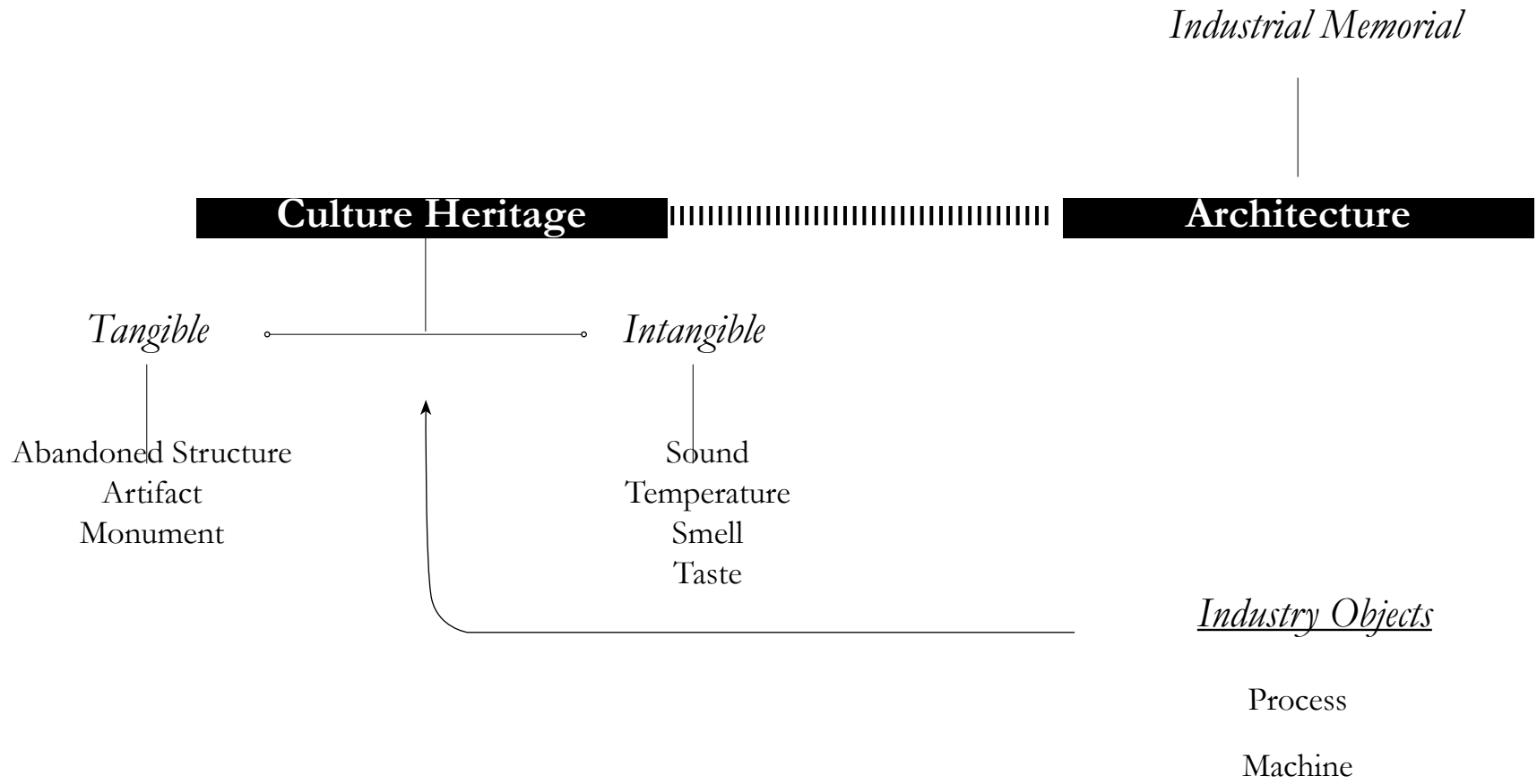
Semester Project Statement

Syracuse, as part of the Upstate New York used to be an essential economic center of the United States. This not only was resulting from its once influential salt industry and its easily accessed canal infrastructure, but also was heavily influenced by the industrial innovation. Without trained engineers, the people in Syracuse designed machines for excavating the earth and building the Erie Canal. And with easy transportation, goods and industrial products created and produced from Syracuse were shipped and transported. This brought prosper and wealth to the Syracuse.

With new transportation technology development including the railways for trains and highways for car, Erie Canal lost its competitive advantage. As a result, industrial goods from Syracuse, with great qualities and quantities, can no longer find its market sufficient to consume all these production. A great number of factories were either relocate to other parts of the country, or shut down permanently. And the Erie Canal was transformed to a city road. The image of industrial prosperity had lost and left behind, were only traces of history.

This tangible ruins and intangible image of prosperity is waiting to be reconnect, revitalize, reestablished. Architecture, as a device that can both protect and revitalize such cultural heritage, is to mediate and to link the tangible and intangible part of history. An industrial memorial that is composed of a spatial translation of such industrial image can be a great way to memorize, revitalize, and relink the tangible and the intangible of industrial culture heritage.





Infrastructure

Erie Boulevard



Salt
Brewery
China
Typewriter

Industrial Memorial



Culture Heritage



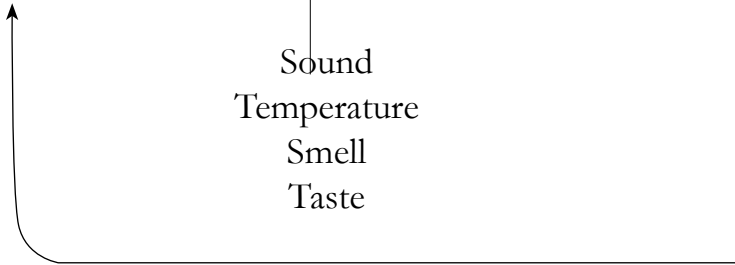
Architecture

Tangible

Abandoned Structure
Artifact
Monument

Intangible

Sound
Temperature
Smell
Taste



Industry Objects

Process
Machine

PRIMARY INDUSTRIES

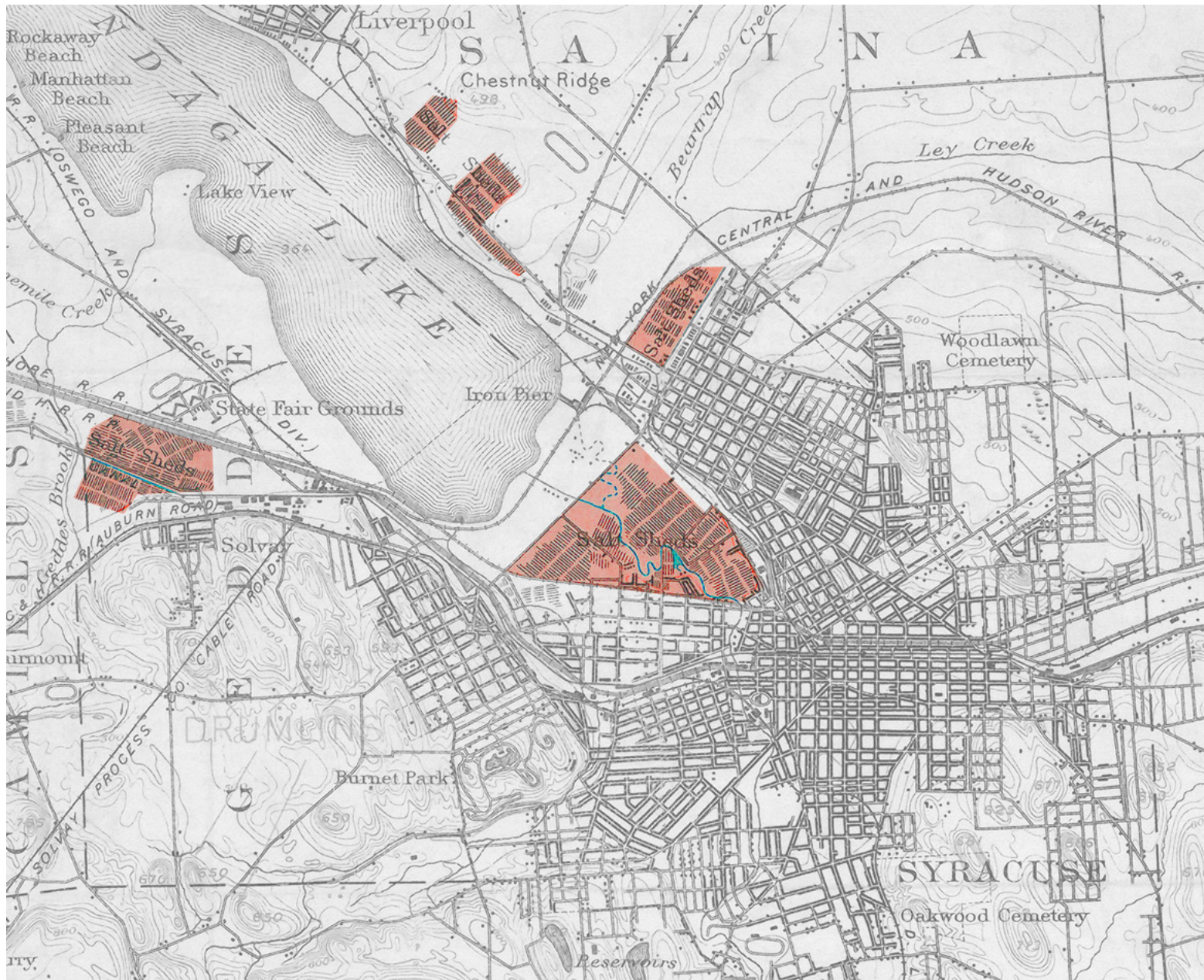
Typewriter | *L.C. Smith & Brothers*

Brewery | *Moore & Quinn*

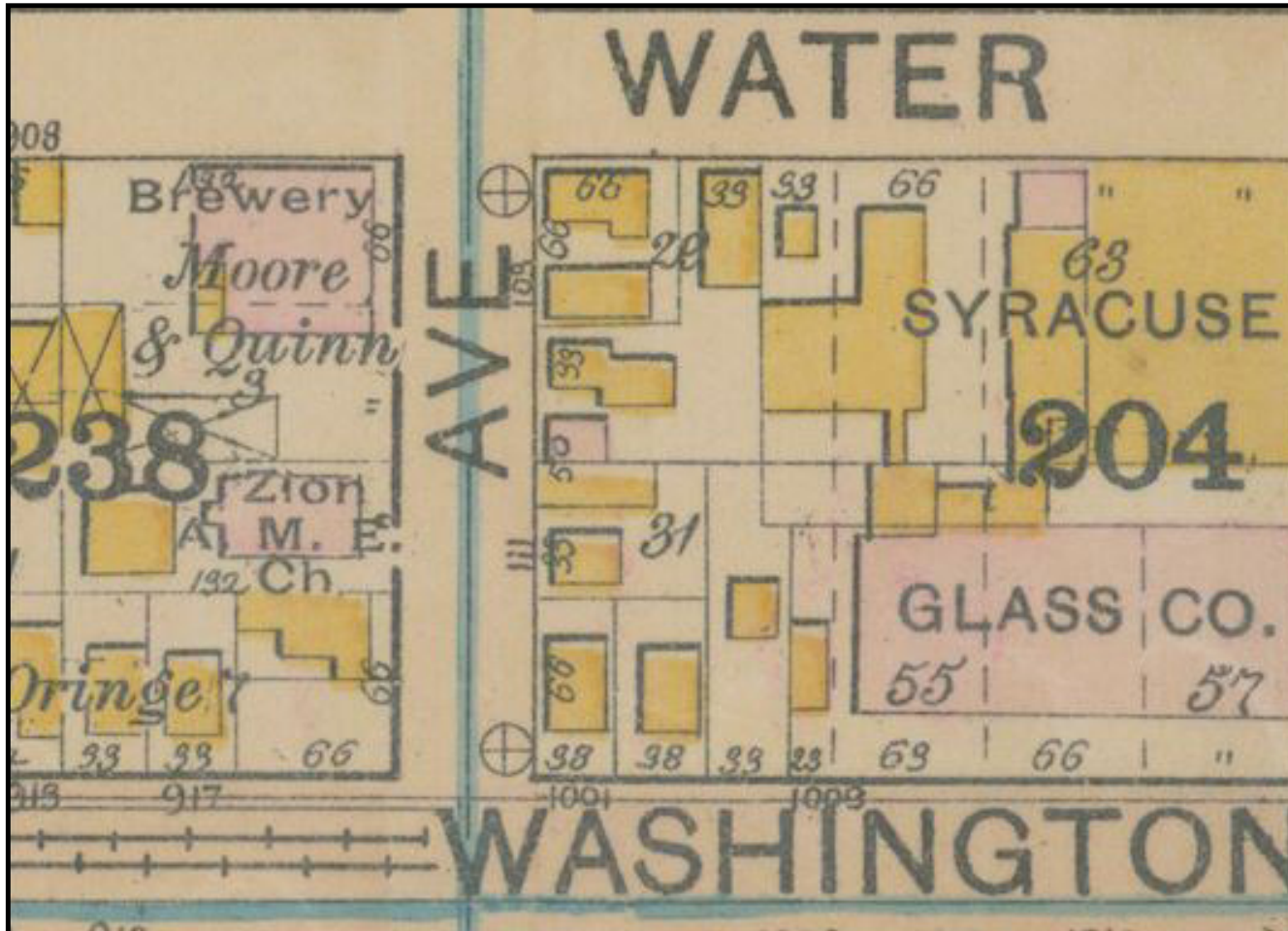
Salt Shed | *The American Dairy Salt Company*

China | *Onondaga Pottery Company (O.P. Co.)*

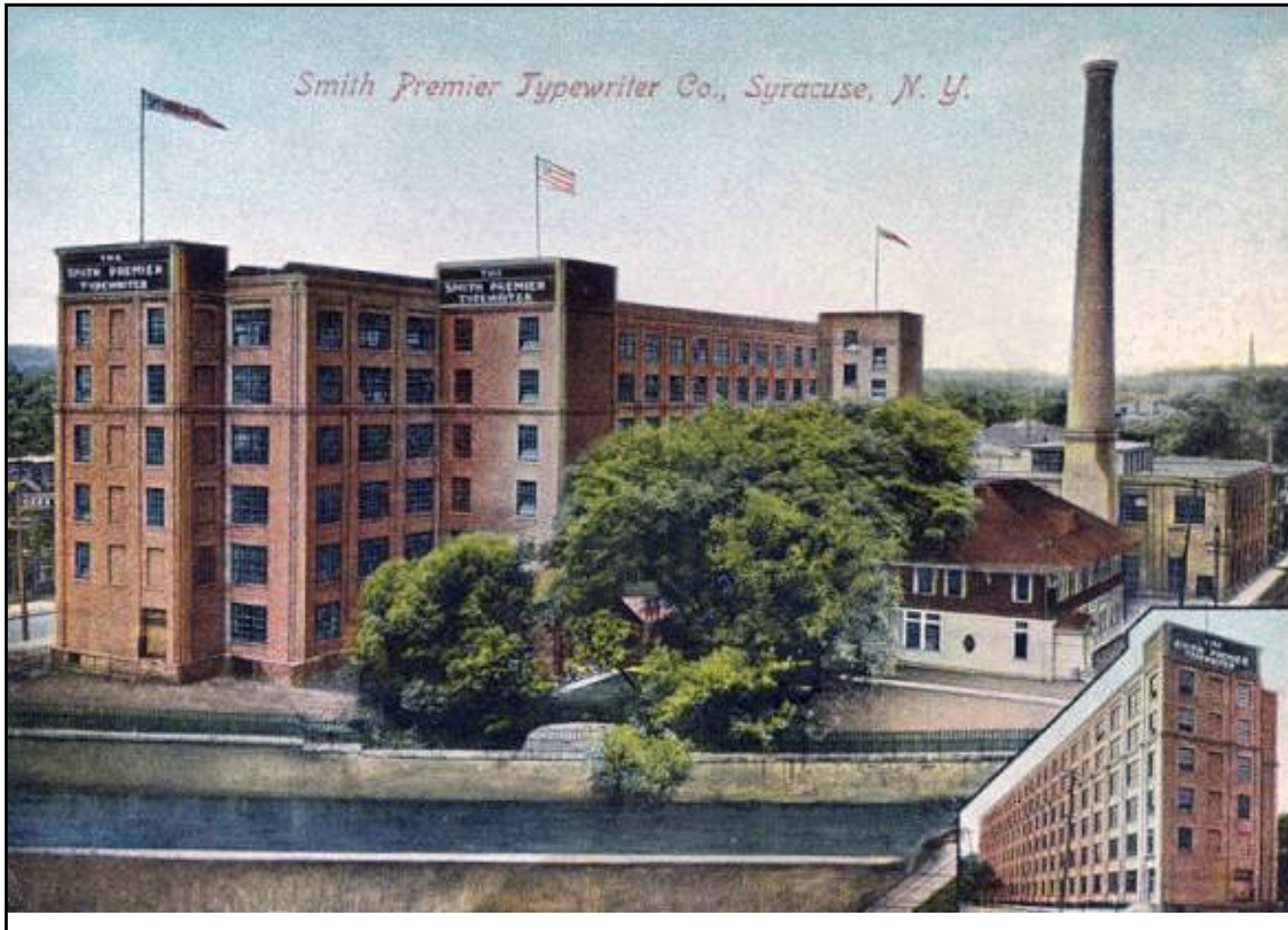
Salt Sheds



MOORE & QUINN



L.C. SMITH & BROTHERS



Site

Salt Industry, **Beer** Industry and **Typewriter** Industry
Saltshed - Open Field | Brewery - Moore and Quinn, 120 S Crouse Ave | Typewriter Factory - L. C. Smiths and Brothers, 701 E Washington St



Site One
Dimensions: 130' * 200'

Site Two Dimensions: 130' * 240'

Site Three
Dimensions: 185' * 200'

Program

Program

Memorial of Upstate New York Industry

Industry

Typewriter | L.C. Smith & Brothers

Brewery | Moore & Quinn

Salt Shed | The American Dairy Salt Company

China | Onondaga Pottery Company (O.P. Co.)

PROGRAM SIZE

Program Dimension Scope:

Small to Micro

Controllable

Blend to Erie Boulevard urban fabric

Footage

2,500 sf

Program Includes:

Main Spaces

Gallery Space 3,500 sf

Other Spaces

Restrooms 500 sf

Reception 1,000 sf

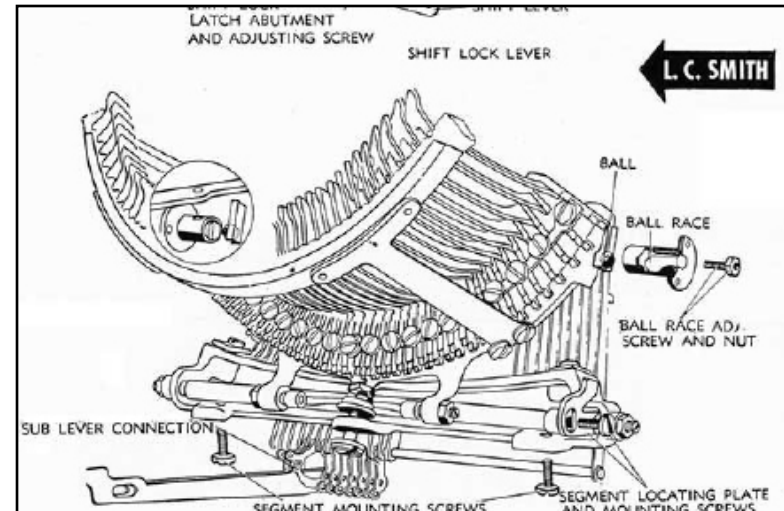
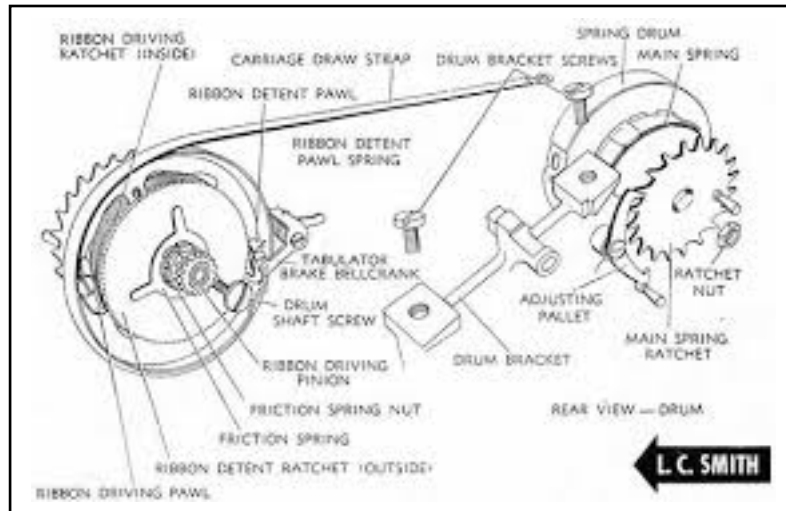
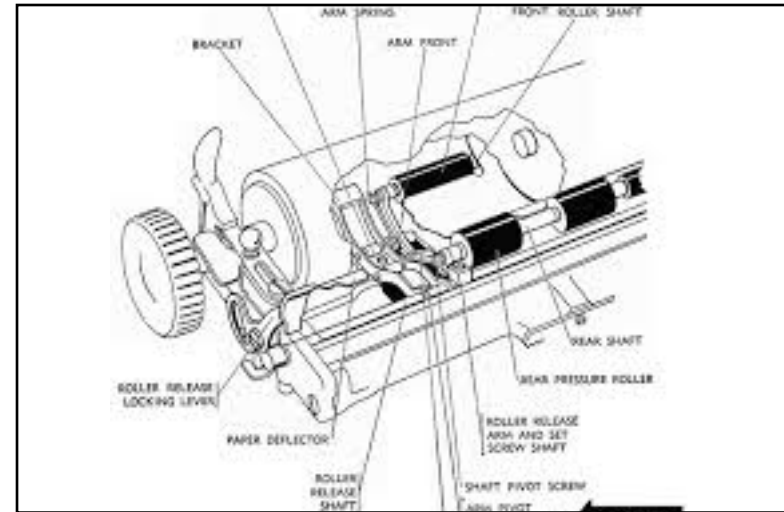
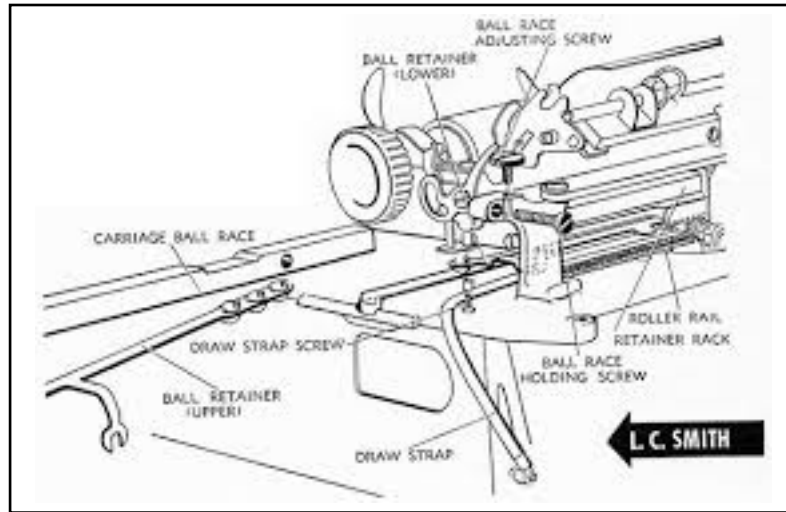
Storage 500 sf

Research Exercise Intro

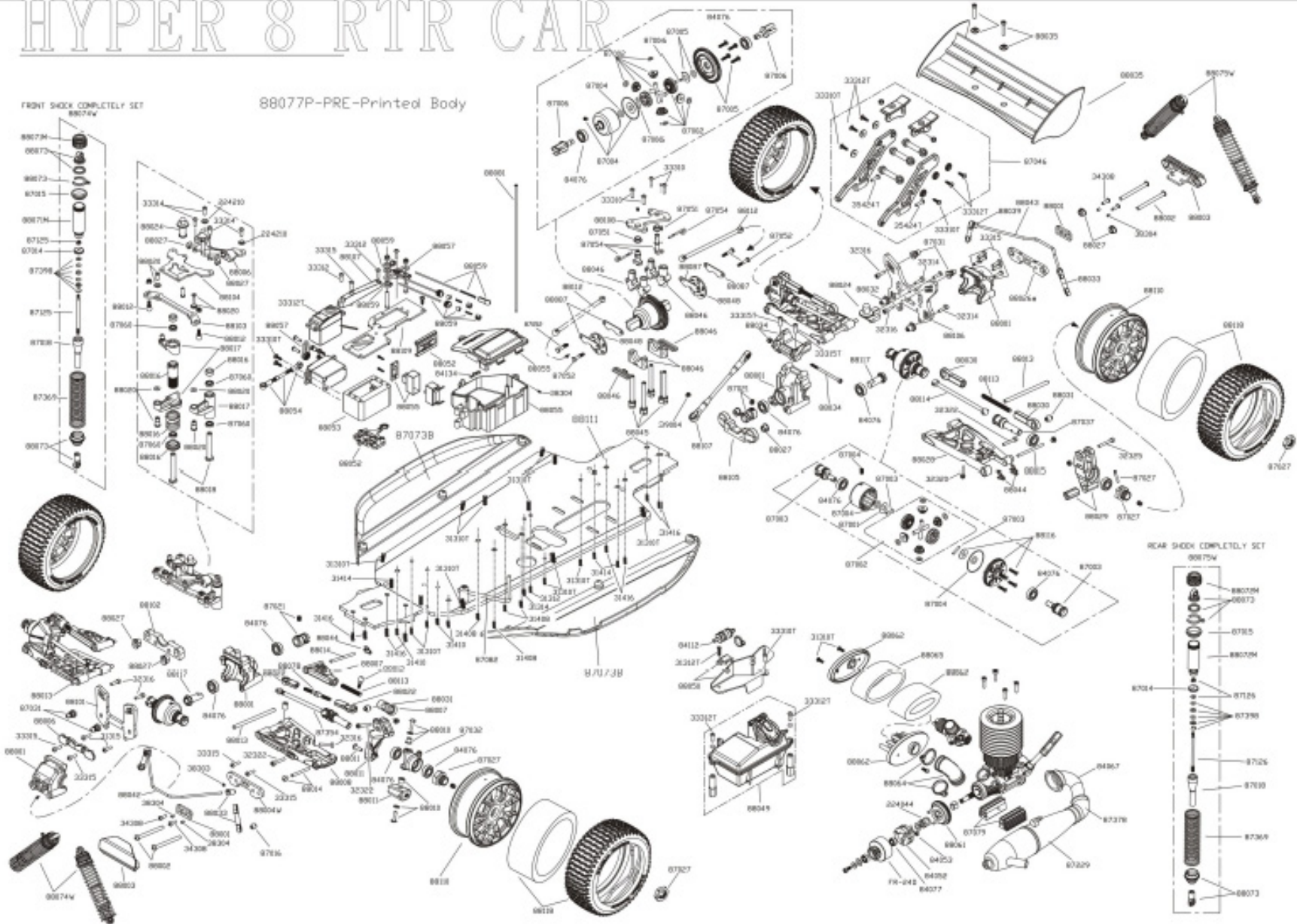
Analyze Tangible
Translate Tangible
Translate Intangible

Output

- 1.Object / System Drawing
- 2.Mood Drawing
- 3.Physical Model

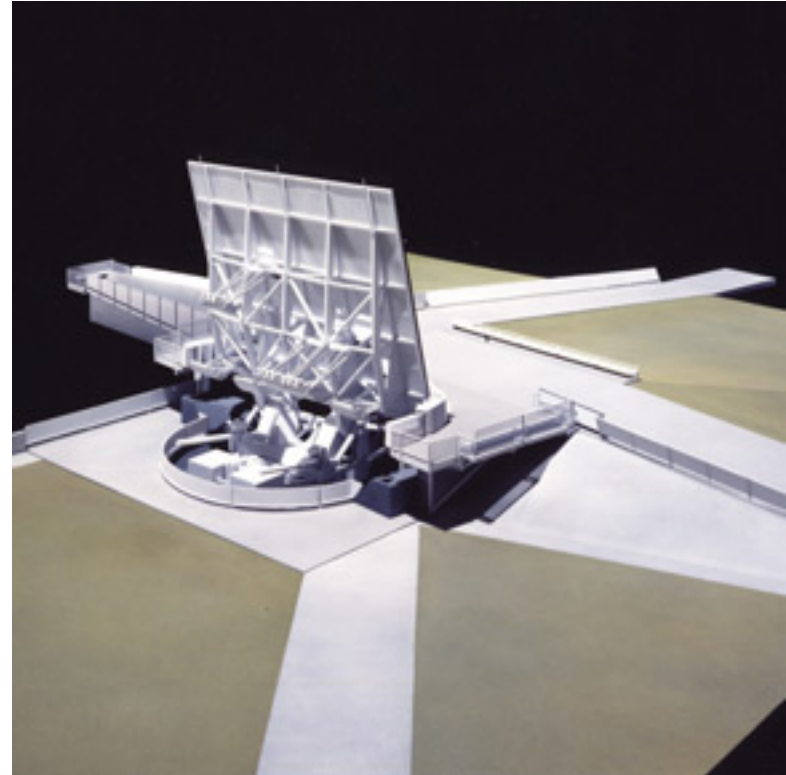


HYPER 8 RTR CAR



Strategies

Reflection



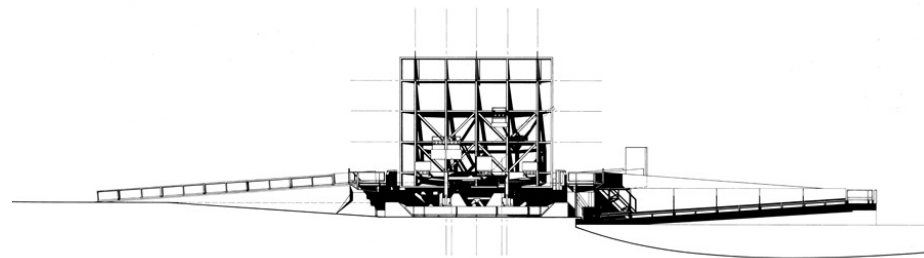
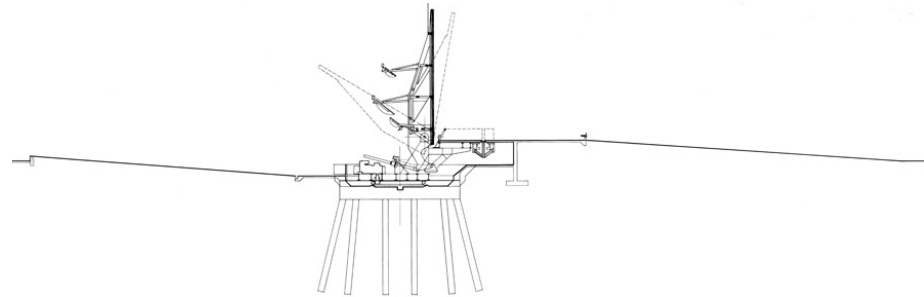
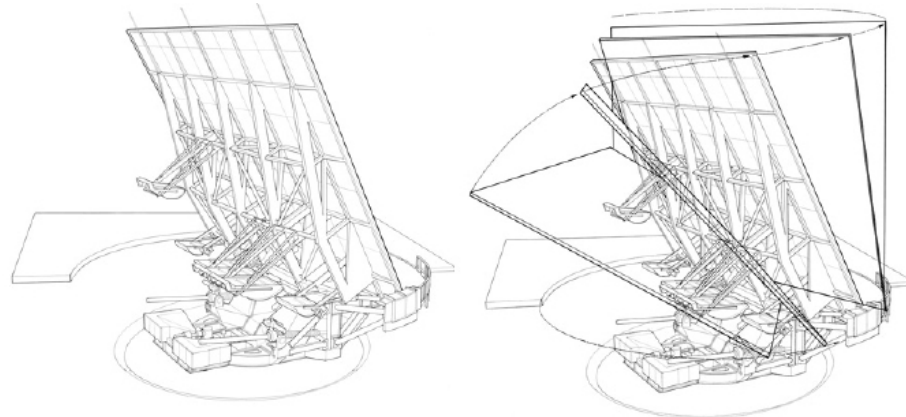
Astronauts Memorial, J.P.A., Kennedy Space Center, Florida,

Replace



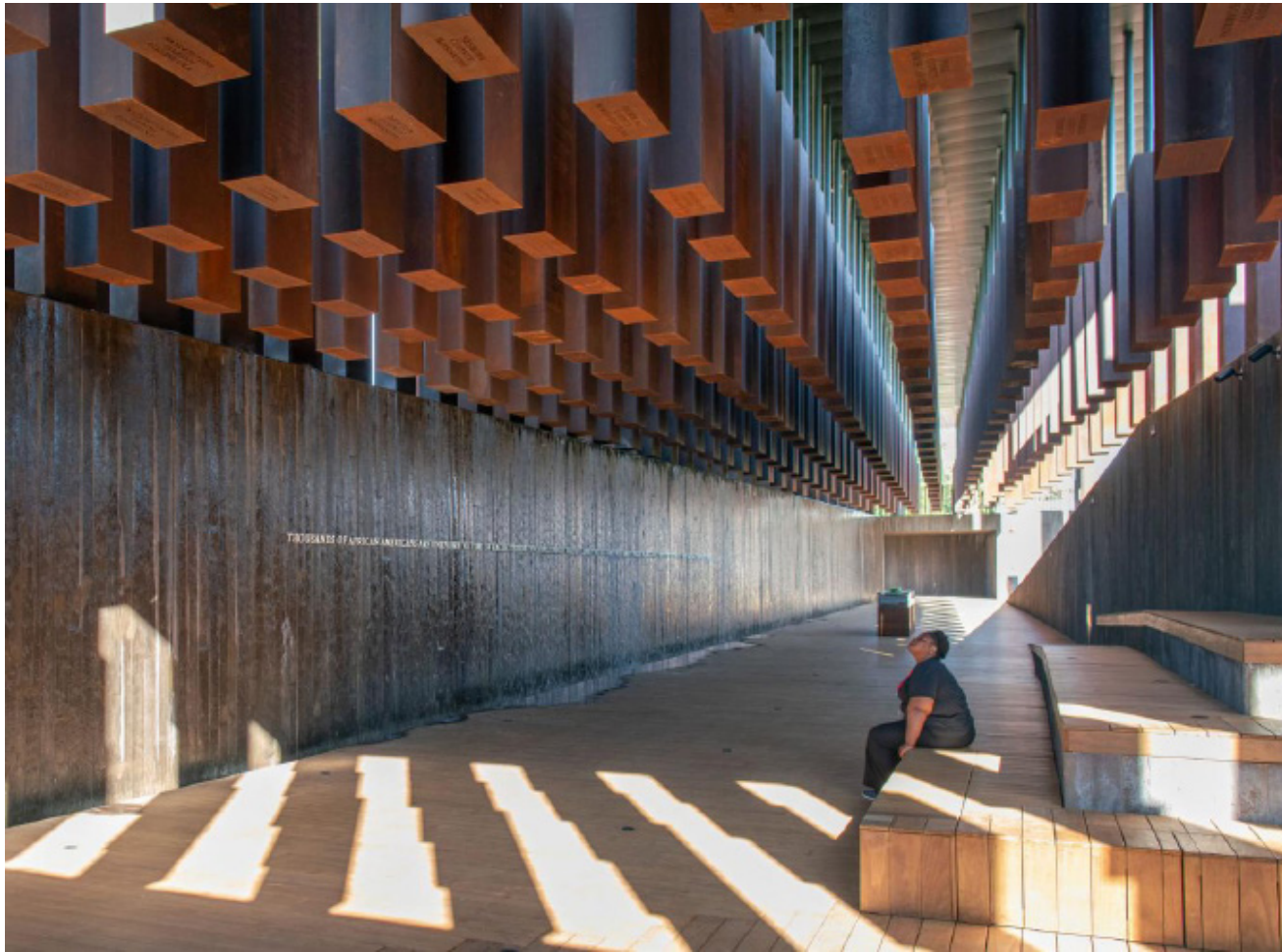
Maison de Verre, Pierre Chardeau, Paris

Mechanized



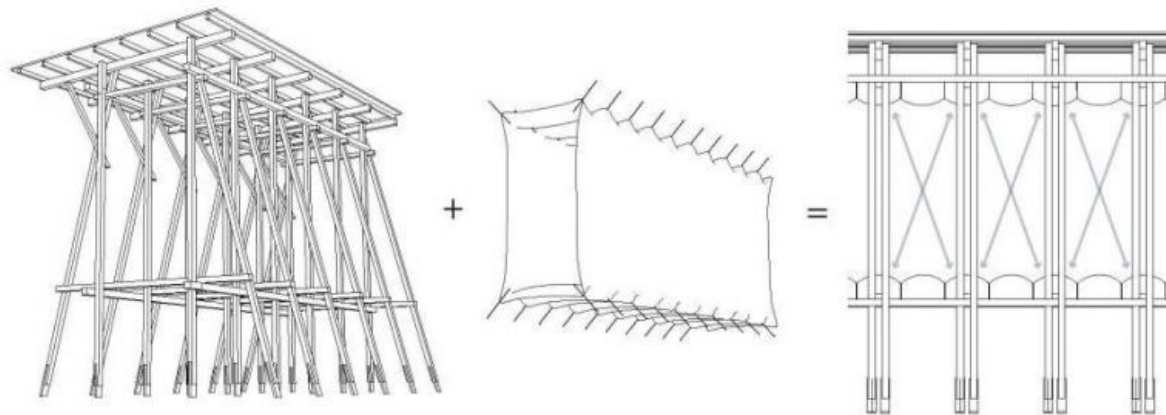
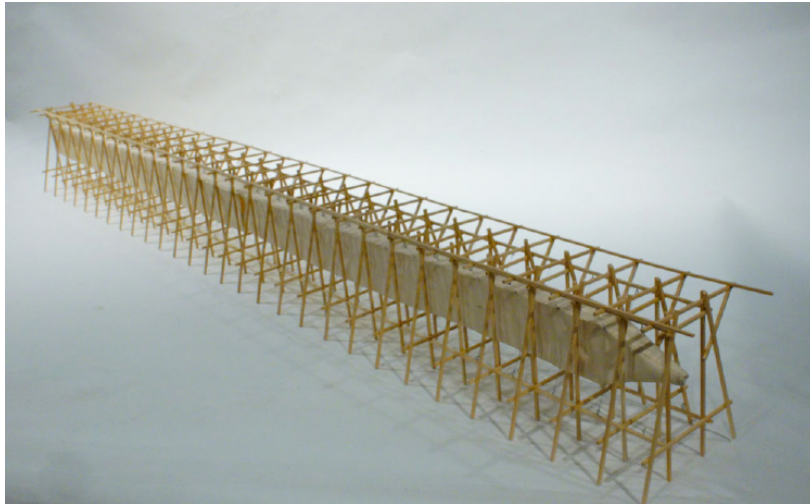
Astronauts Memorial, J.P.A., Kennedy Space Center, Florida,

Inversion



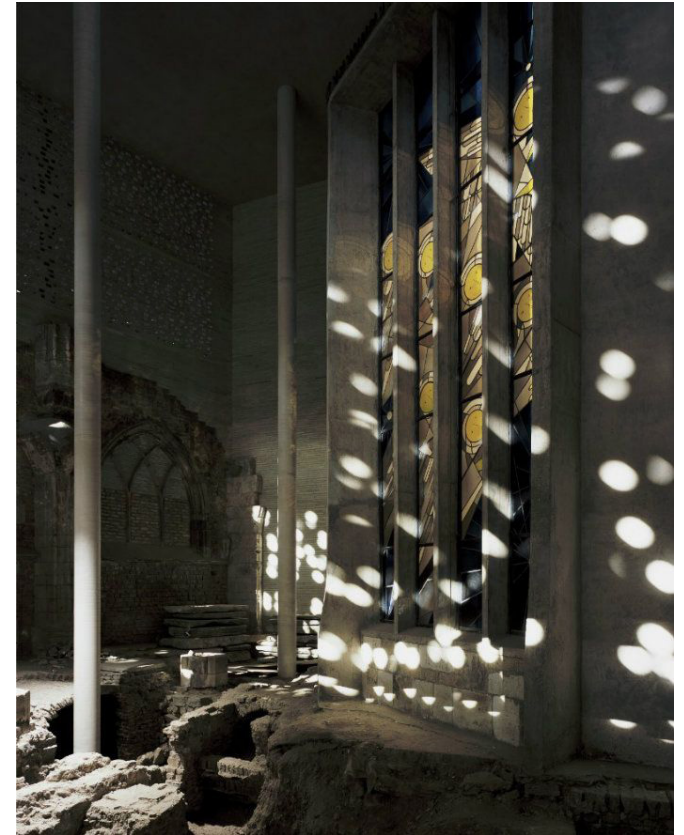
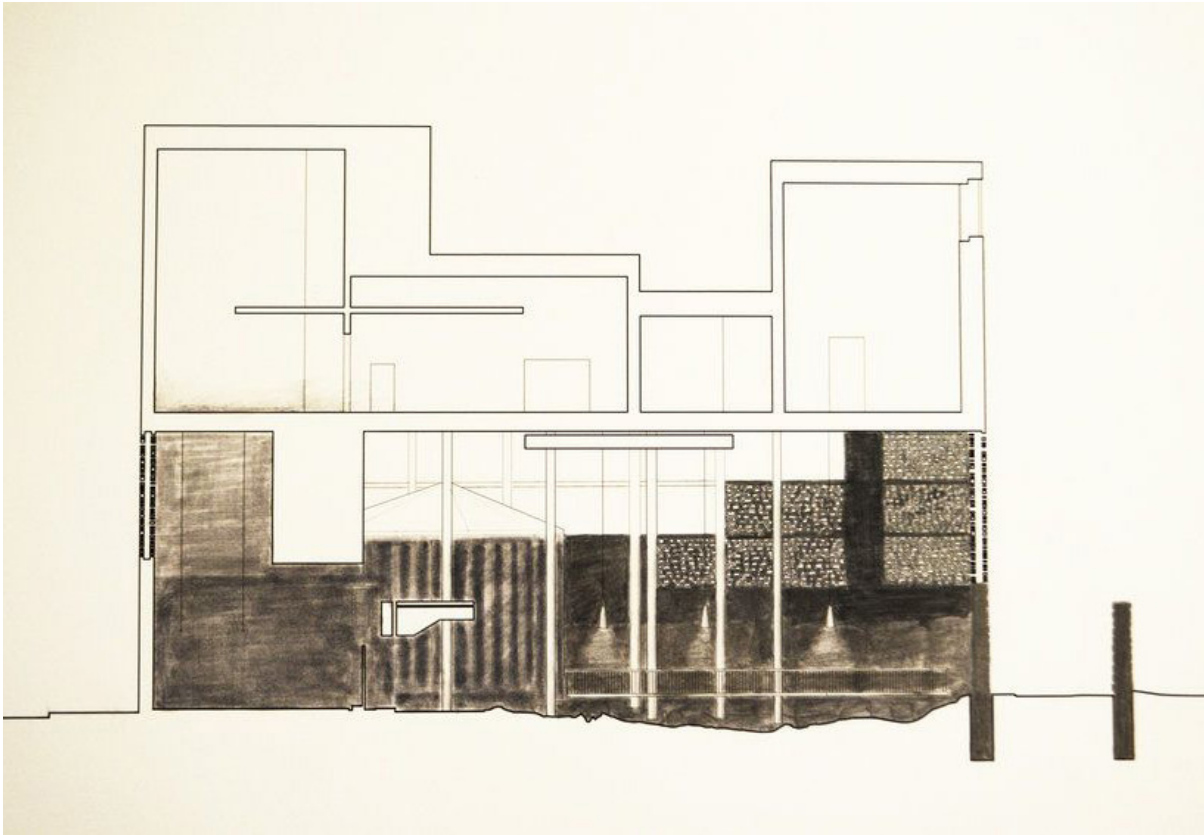
*The National Memorial for Peace and Justice, Mass Design Group,
Montgomery, Alabama*

Derive



Steilneset Memorial / Peter Zumthor and Louise Bourgeois, Vardø, Norway.

Imposition



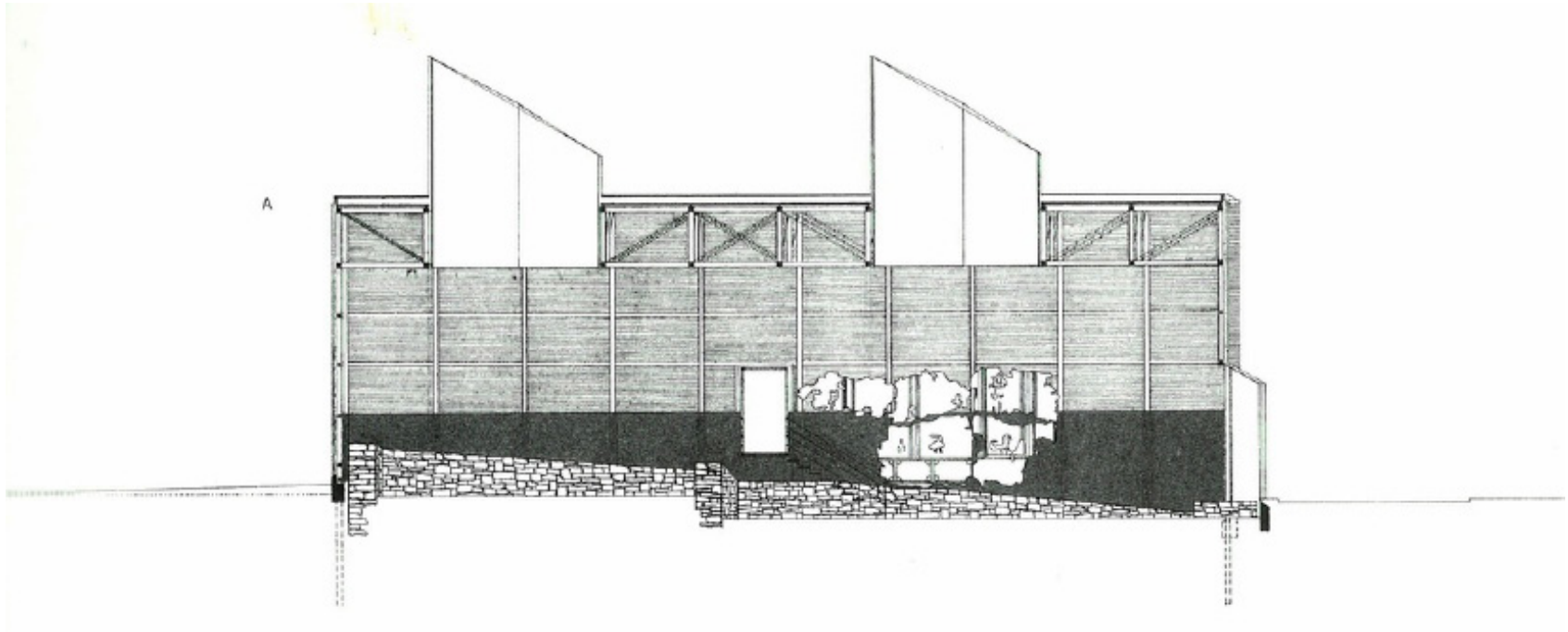
Koluba Museum, Peter Zumthor, Köln, Germany

Rebuild



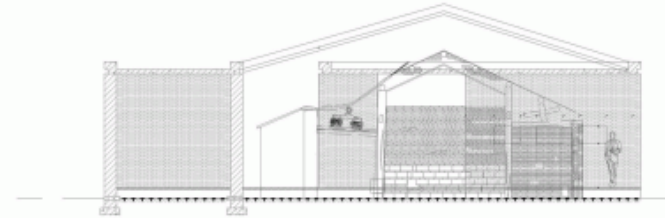
*Ruin Studio / Lily Jencks Studio + Nathanael Dorent Architecture,
Dumfries, United Kingdom*

Rebuild

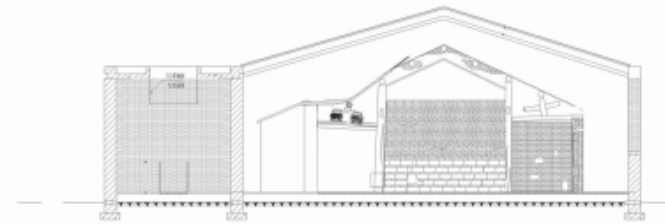


Shelter for Roman Ruins in Quiet Solitude, Peter Zumthor

Cover



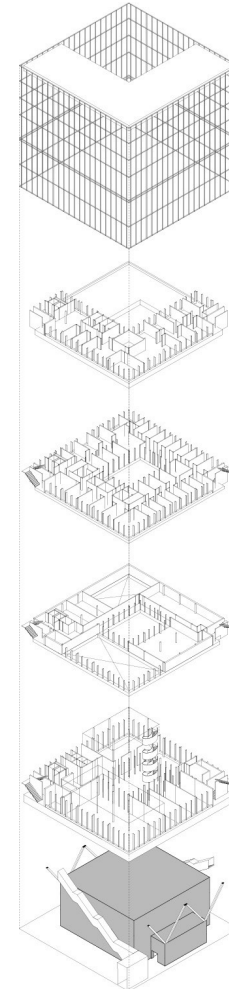
1-1 剖面图 1:50



2-2 剖面图 1:50

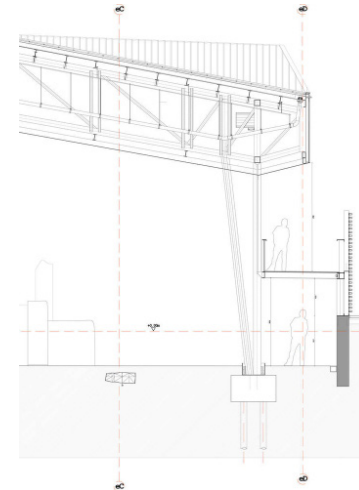
Shengdetang Ruins Gallery / CHCC of Tsinghua University, Hainan, China

Redefine



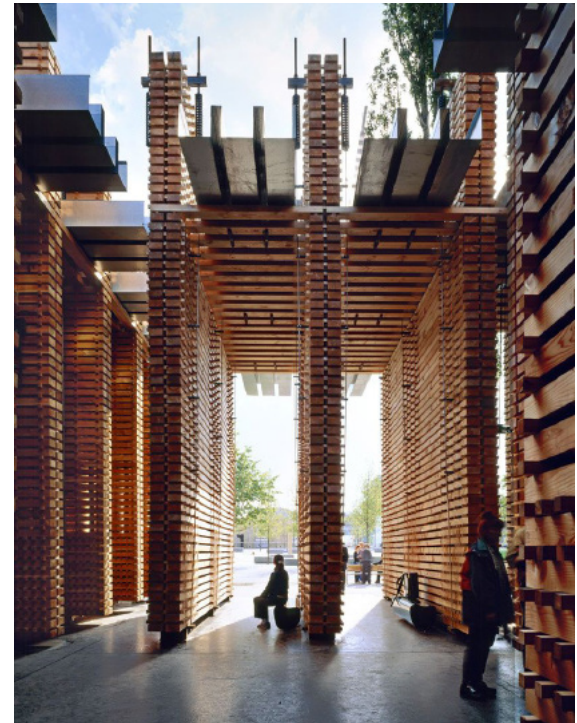
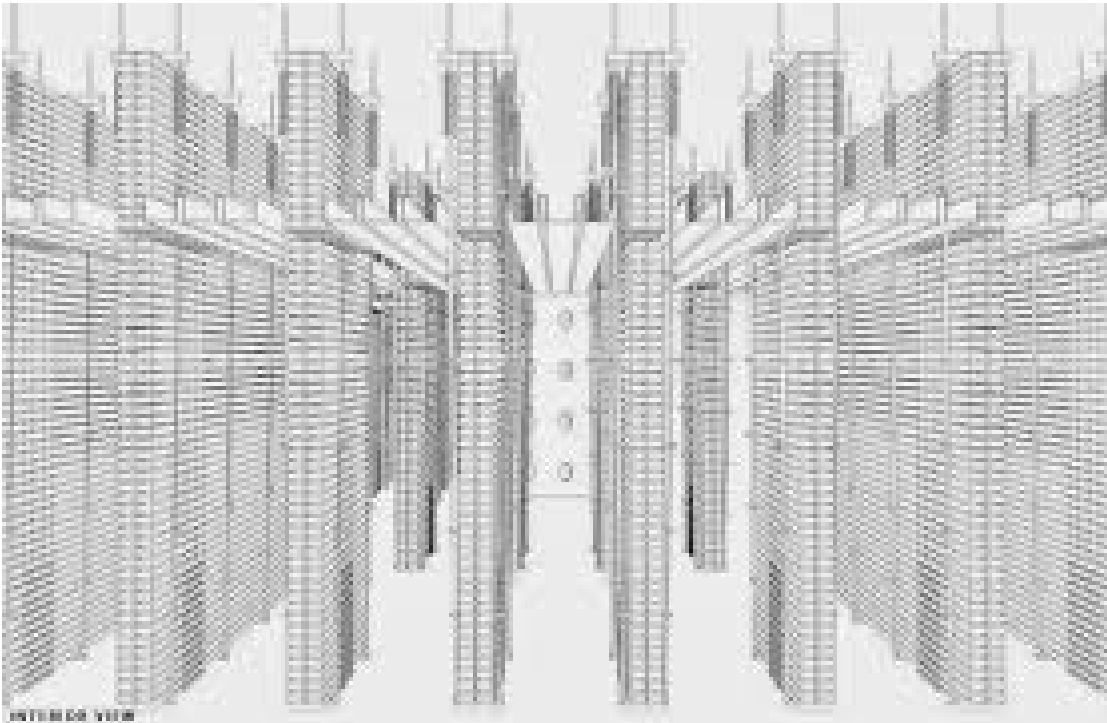
Heritage Center Atop a WWII Bunker, Dorte Mandrup,

Blend



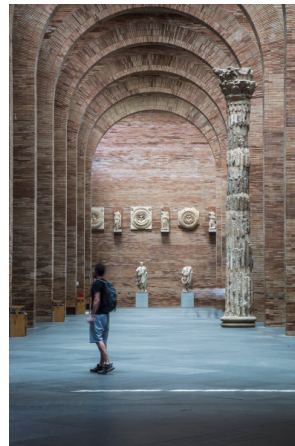
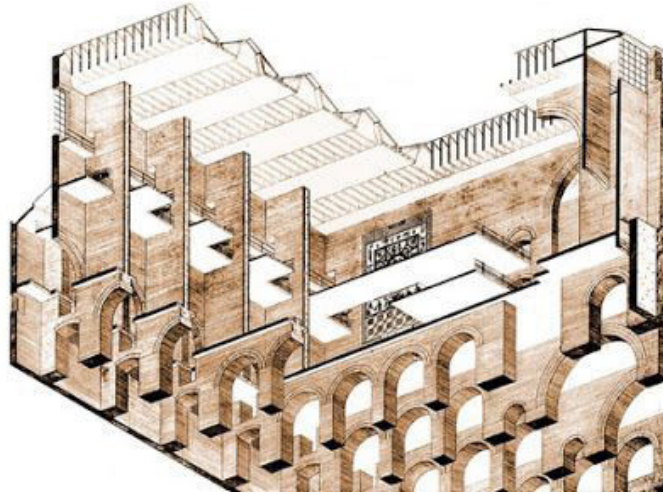
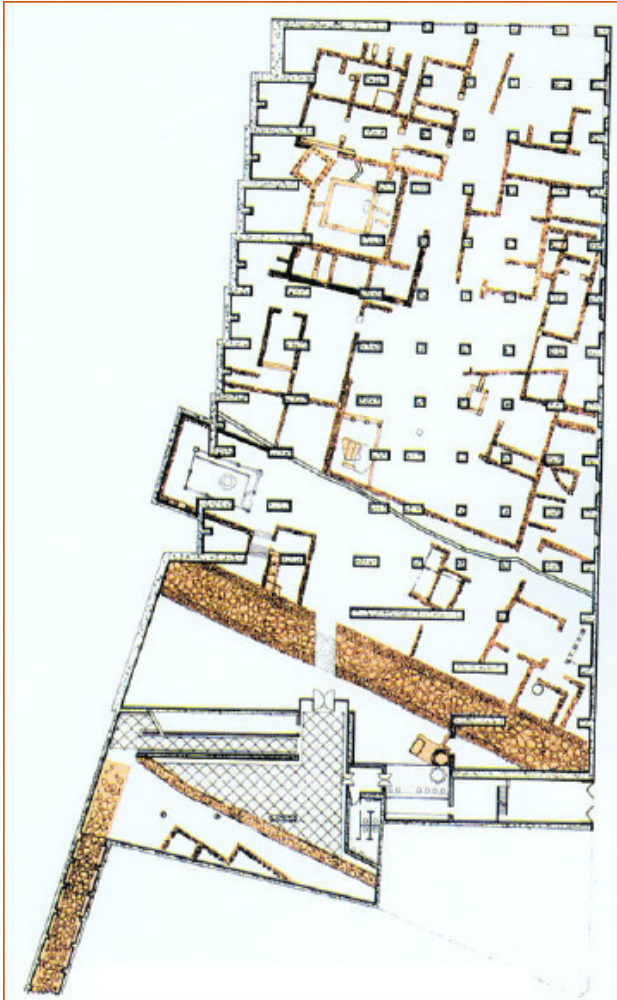
Deck Over A Roman Site / Amann-Canovas-Mauri, Cartagena, Spain

Mimic



Swiss Sound Pavilion, Peter Zumthor, EXPO 2000

Reproduce



National Museum of Roman Art, Rafael Moneo, Rome

Localization



Serpentine Pavillion, James Grey West, Kensington Gardens, London