

2018

# TDP-43 interacts with mitochondrial proteins critical for mitophagy and mitochondrial dynamics

Stephani A. Davis

Sheed Itaman

Christopher M. Khalid-Janney

Justin A. Sherard

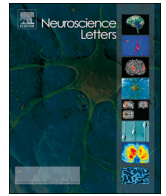
James A. Dowell

*See next page for additional authors*

---

**Authors**

Stephani A. Davis, Sheed Itaman, Christopher M. Khalid-Janney, Justin A. Sherard, James A. Dowell, Nigel J. Cairns, and Michael A. Gitcho



## Research article

## TDP-43 interacts with mitochondrial proteins critical for mitophagy and mitochondrial dynamics

Stephani A. Davis<sup>a,b</sup>, Sheed Itaman<sup>a</sup>, Christopher M. Khalid-Janney<sup>a</sup>, Justin A. Sherard<sup>a</sup>, James A. Dowell<sup>c</sup>, Nigel J. Cairns<sup>d</sup>, Michael A. Gitcho<sup>a,b,\*</sup>

<sup>a</sup> Department of Biological Sciences, Delaware State University, Dover, DE 19901, United States

<sup>b</sup> Delaware Center for Neuroscience Research, Delaware State University, Dover, DE 19901, United States

<sup>c</sup> Wisconsin Institutes for Discovery, Madison, WI 53715, United States

<sup>d</sup> Department of Neurology, Washington University School of Medicine, St. Louis, MO 63110, United States

## ARTICLE INFO

## Keywords:

TDP-43  
APP/PS1  
PHB2  
Mitophagy  
MFN2  
Mitochondria  
PMPCA

## ABSTRACT

Transactive response DNA-binding protein of 43 kDa (TDP-43) functions as a heterogeneous nuclear ribonucleoprotein and is the major pathological protein in frontotemporal lobar degeneration (FTLD) and amyotrophic lateral sclerosis/motor neuron disease (ALS/MND). TDP-43 pathology may also be present as a comorbidity in approximately 20–50% of sporadic Alzheimer's disease cases. In a mouse model of MND, full-length TDP-43 increases association with the mitochondria and blocking the TDP-43/mitochondria interaction ameliorates motor dysfunction. Utilizing a proteomics screen, several mitochondrial TDP-43-interacting partners were identified, including voltage-gated anion channel 1 (VDAC1) and prohibitin 2 (PHB2), a crucial mitophagy receptor. Overexpression of TDP-43 led to an increase in PHB2 whereas TDP-43 knockdown reduced PHB2 expression in cells treated with carbonyl cyanide m-chlorophenylhydrazone (CCCP), an inducer of mitophagy. These results suggest that TDP-43 expression contributes to metabolism and mitochondrial function however we show no change in bioenergetics when TDP-43 is overexpressed and knocked down in HEK293T cells. Furthermore, the fusion protein mitofusin 2 (MFN2) interacts in complex with TDP-43 and selective expression of human TDP-43 in the hippocampus and cortex induced an age-dependent change in Mfn2 expression. Mitochondria morphology is altered in 9-month-old mice selectively expressing TDP-43 in an APP/PS1 background compared with APP/PS1 littermates. We further confirmed TDP-43 localization to the mitochondria using immunogold labeled TDP-43 transmission electron microscopy (TEM) and mitochondrial isolation methods. There was no increase in full-length TDP-43 localized to the mitochondria in APP/PS1 mice compared to wild-type (littermates); however, using C- and N-terminal-specific TDP-43 antibodies, the N-terminal (27 kDa, N27) and C-terminal (30 kDa, C30) fragments of TDP-43 are greatly enriched in mitochondrial fractions. In addition, when the mitochondrial peptidase (PMPCA) is overexpressed there is an increase in the N-terminal fragment (N27). These results suggest that TDP-43 processing may contribute to metabolism and mitochondrial function.

## 1. Introduction

The heterogeneous nuclear ribonucleoprotein (hnRNP) TDP-43, participates in exon skipping, RNA stability, RNA transport, splicing, translation, microRNA processing, cellular stress, and localizes to the mitochondria [6,7,40,45,48]. TDP-43 is the major pathological protein in frontotemporal lobar degeneration (FTLD) and amyotrophic lateral

sclerosis/motor neuron disease (ALS/MND) [2,27]. In addition, TDP-43 proteinopathy may be present as a comorbidity in approximately 19–57% of cases of sporadic AD [1,3,18,22,27,41]. The pathology of TDP-43 consists of ubiquitination, hyperphosphorylation and proteolytic cleavage of TDP-43, into 35 kDa and 25 kDa insoluble aggregates, the major component of the inclusion bodies [2,31]. Full-length and C-terminal fragment (25 kDa) of TDP-43 overexpression in NSC-34 cells

**Abbreviations:** APP, amyloid precursor protein; VDAC1, voltage dependent anion channel 1; TDP-43, TAR DNA binding protein of 43 kDa; PSEN1/PS1, presenilin 1; AD, Alzheimer disease; hnRNP, heterogeneous nuclear ribonucleoprotein; ALS, amyotrophic lateral sclerosis; MND, motor neuron disease; CCCP, carbonyl cyanide m-chlorophenyl hydrazine; PHB2, prohibitin 2; MFN2, mitofusin 2; DRP1, dynamin-related protein 1; N27, N-terminal TDP-43 fragment; C30, C-terminal TDP-43 fragment; ND3, mitochondrially encoded NADH ubiquinone oxidoreductase core subunit 3; ND6, mitochondrially encoded NADH ubiquinone oxidoreductase core subunit 6; PMPCA, peptidase mitochondrial processing alpha subunit

\* Corresponding author at: Delaware State University, Delaware Center for Neuroscience Research, 1200 North DuPont Highway, Dover, DE 19901, United States.

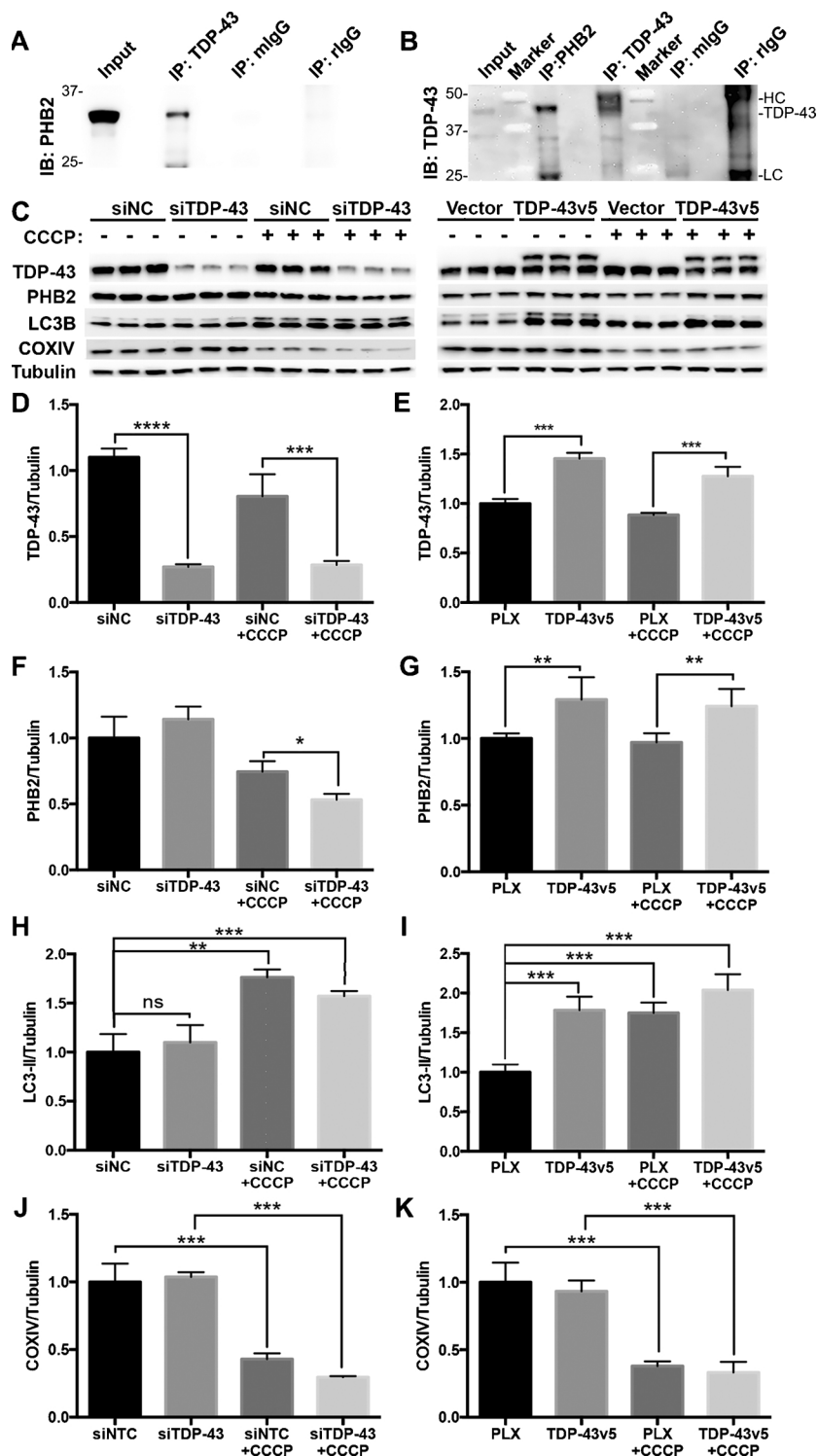
E-mail address: [mgitcho@desu.edu](mailto:mgitcho@desu.edu) (M.A. Gitcho).

<https://doi.org/10.1016/j.neulet.2018.04.053>

Received 12 October 2017; Received in revised form 1 March 2018; Accepted 27 April 2018

Available online 30 April 2018

0304-3940/ © 2018 The Authors. Published by Elsevier B.V. This is an open access article under the CC BY-NC-ND license (<http://creativecommons.org/licenses/by-nc-nd/4.0/>).



**Fig. 1.** TDP-43 expression alters PHB2 expression and induces LC3-II. **A)** Immunoprecipitation of TDP-43 and immunoblot (IB) with anti-PHB2. mIgG indicates mouse IgG control, rIgG indicates rabbit IgG control. **B)** Immunoprecipitation of PHB2 and TDP-43 and immunoblot for TDP-43. **C)** Western blot for TDP-43, PHB2, LC3B, COXIV and Tubulin from lysed HEK293T cells transfected with siNC (negative control), siTDP-43, vector (PLX), or v5 tagged TDP-43 (TDP-43v5) and treated with either 10  $\mu$ M CCCP (indicated by + above lane) or DMSO as a control (indicated by -) for 12 h. **D-E)** Quantitation of TDP-43/Tubulin from Western blot above. **F-G)** Quantitation of PHB2/Tubulin from Western blot above. **H-I)** Quantitation of LC3-II/tubulin from Western blot above. \* $p < 0.05$ , \*\* $p < 0.01$ , \*\*\* $p < 0.001$ , \*\*\*\* $p < 0.0001$ . ANOVA with Tukey correction for Type I error. Error bars represent standard deviation.

has been shown to increase mitophagy, but little is known about the mechanisms by which overexpression of TDP-43 induces mitophagy [19,28,50]. Distinct changes in mitochondrial dynamics, including mitochondrial aggregation, have been reported in some mouse models of TDP-43 [37,39,47,54,55]. Mitochondrial dynamics are orchestrated by regulators of fusion, including mitofusin 1 and 2 (MFN1 and MFN2), along with dynamin-related protein 1 (DRP1), a regulator of fission [8,13]. Specifically, one study showed that MFN2 overexpression rescued TDP-43 induced mitochondrial dysfunction [47], while other research found that overexpression of MFN2 induced mitochondrial

dysfunction and clustering [20,54], with the latter study supporting a model of neurodegeneration involving TDP-43 overexpression [20,54]. Additionally, a recent report showed that full-length TDP-43 localizes to the mitochondrial fraction during stress-induced conditions in autosomal dominant ALS. Interestingly, by reducing localization of TDP-43 to the mitochondria, ALS transgenic mice show improved motor function [46,48]. However, another recent report found that ALS mutant TDP-43 did not impair mitochondrial bioenergetics [23].

Misregulation of mitochondrial dynamics contributes to mitochondrial dysfunction in Alzheimer's disease (AD) and other

neurodegenerative diseases [4,5,33,35]. The *APP/PS1* transgenic mouse model co-expresses familial AD Swedish mutations (*APP*<sup>K595N,M596L</sup>) and mutant human presenilin 1 (*PSEN1-ΔE9*) [21], recapitulates features of pathologic AD, and displays alterations in metabolism that affect respiratory function, mitochondrial biogenesis, and mitophagy [32,49]. With the different findings related to TDP-43, mitochondrial dynamics, and stress, and since we previously described an increase in cytoplasmic accumulation of endogenous TDP-43 in *APP/PS1* mice, we wanted to determine if TDP-43 under stress would accumulate within the mitochondria [14]. Using several methods including proteomics, immunoprecipitation, immunogold TEM, mitochondrial fractionation, immunoblotting, and bioenergetics we studied the role that TDP-43 plays in mitophagy and mitochondrial dynamics. Our data may provide new insights into the role TDP-43 plays in mitochondrial dynamics.

## 2. Materials and methods

For complete methods describing mice, transmission electron microscopy, mitochondrial isolation, cell culture, transfections, siRNA, CCCP treatment, immunofluorescent staining, immunoprecipitation, Western blots, proteomics, bioenergetics analysis (Seahorse, Agilent), and statistical analysis please see supplementary material.

## 3. Results

### 3.1. TDP-43 interacts with prohibitin 2 and increases mitophagy

Initially we investigated if a change in TDP-43 expression altered mitochondrial bioenergetics. In HEK293T cells overexpressing and knocking down TDP-43, we saw no change in normalized oxygen consumption rate (OCR) and extracellular acidification rate (ECAR) (Seahorse, Agilent) (Fig. S1). This is supported from previous work that examined these changes in patient-derived mutant TDP-43 fibroblasts [23]. Interestingly, it has been recently reported that primary fibroblasts derived from sporadic ALS patients show no TDP-43 pathology, which may limit their use with respect to mitochondrial dysfunction [11].

To identify TDP-43 interacting partners, immunoprecipitated TDP-43 from cortex lysate in wild-type mice was evaluated through proteomic analysis. Proteomic analysis revealed several other mitochondrial proteins that interact with TDP-43 as well as non-mitochondrial proteins (Fig. S2) [14,26,43]. The subcellular locations, functions, and known interactions for these mitochondrial proteins are represented by the interactive map (Fig. S3). Five out of eight of the mitochondrial TDP-43 interacting proteins had known interactions with each other, including Prohibitin 2 (PHB2) and voltage-gated dependent anion channel 1 (VDAC1). We first validated these interactions with TDP-43 using co-immunoprecipitation (Fig. 1A and B and Fig. S4). We chose to focus on the interaction between TDP-43 and PHB2 since PHB2 is a critical receptor for mitophagy [52]. Moreover, loss of PHB2 causes mitochondrial instability and leads to tau hyperphosphorylation and neurodegeneration [29].

We investigated whether TDP-43 expression regulates PHB2 protein expression levels. When TDP-43 was knocked down (siTDP-43) in HEK293T cells, PHB2 protein expression was not significantly altered under normal conditions (Fig. 1C, D and F). However, upon treatment with the mitochondria uncoupler and autophagy inducer, CCCP (10 μM for 12 h), there was a 20% significant reduction in PHB2 ( $p < 0.01$ ) when TDP-43 was knocked down ( $p = .0006$ ) (Fig. 1C,F). When TDP-43 (v5-tagged) is overexpressed in cells treated with CCCP, (Fig. 1C,E) PHB2 levels were higher independent of CCCP treatment (Fig. 1C,G). We did not see a significant change in PHB2 levels upon CCCP treatment alone without TDP-43 overexpression (Fig. 1C,G).

PHB2 has been shown to be a crucial receptor for Parkin-mediated mitophagy and interacts with LC3-II [25]. We observed an increase in

Parkin-positive punctate staining in cells treated with CCCP, which was enhanced with TDP-43 overexpression and reduced when TDP-43 was knocked down (Fig. S5). Overall, CCCP treatment led to an increase in LC3-II and a decrease in COXIV (Fig. 1C,H–J). However, there was significantly less (12%,  $p = .024$ ) LC3-II when TDP-43 expression was reduced (Fig. 1C,H). This may indicate that TDP-43 expression is required for full activation of CCCP-induced mitophagy. Interestingly, TDP-43 overexpression alone significantly increased LC3-II (75%,  $p = .0012$ ) expression to the same level induced by CCCP treatment (Fig. 3C,I). TDP-43 overexpression in cells treated with CCCP led to a marginal increase in LC3 compared to the vector control (Fig. 1C,I). Additionally, we see TDP-43 labeled mitochondria near lysosomes in mouse hippocampal sections using TEM (Fig. S6). We observed disorganized mitochondrial membranes in close proximity to TDP-43-labeled lysosomes indicating a possible link between TDP-43 and mitochondrial organization and degradation (Fig. S6).

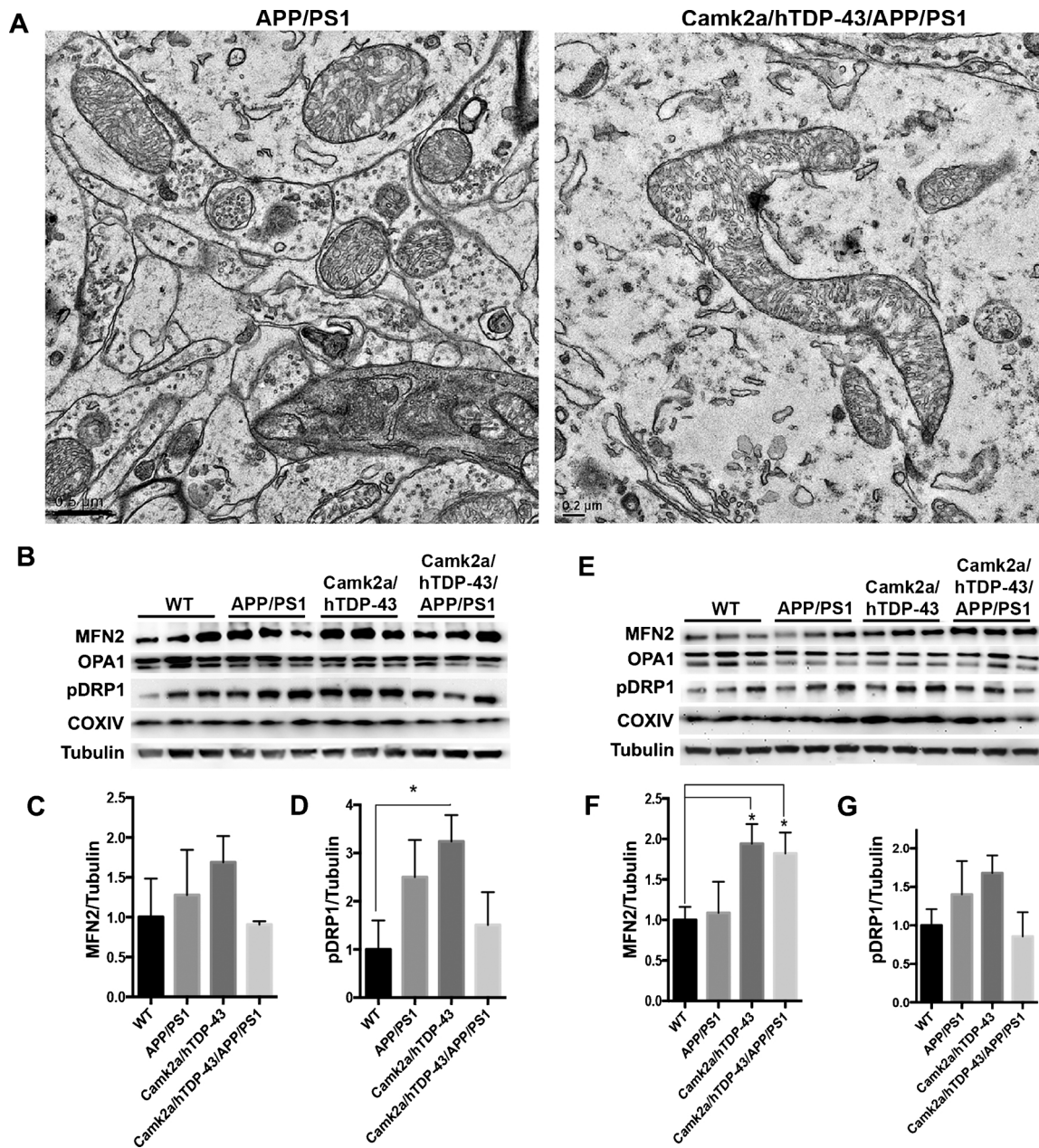
### 3.2. Selective expression of TDP-43 in the hippocampus and cortex leads to an age-dependent change in fusion and fission

Since TDP-43 has been shown to localize to mitochondria, we were interested in whether TDP-43 overexpression affects mitochondrial fusion/fission dynamics. Mitofusin2 (MFN2) is a critical regulator of mitochondrial fusion. Knocking down TDP-43 in HEK293T cells led to a  $37 \pm 0.016\%$  ( $p = .0006$ ) reduction in MFN2 protein whereas TDP-43 overexpression marginally increased MFN2 levels (Fig. S7A–C). We determined that TDP-43 interacts in complex with MFN2 by immunoprecipitation using cortical human brain tissue (Fig. S7D). Mitochondrial morphology was altered in 9-month old *APP/PS1* mice expressing hTDP-43 in the cortex and hippocampus (Camk2a-tTA/tetO-hTDP-43/*APP/PS1*) that correlates with the increase in MFN2 expression (Fig. 1A,E–G). Furthermore, we utilized mice with selective expression of human TDP-43 in cortex and hippocampus (Camk2a-tTA/tetO-hTDP-43) and examined changes in MFN2 as well as dynamin-related protein 1 (DRP1), which is reported to play a key role in fission, at 4 months and 9 months of age. The dynamin family GTPase fusion protein, optic atrophy 1 (OPA1) showed no change in expression (Fig. 2B, E) [10]. In the cortex and hippocampus of 4-month old mice, there was no difference in MFN2 expression but there was a two-fold increase in MFN2 in Camk2a/hTDP-43 age ( $1.94 \pm 0.24$ ,  $p = .012$ ) and Camk2a/hTDP-43/*APP/PS1* ( $1.82 \pm 0.22$ ,  $p = .025$ ) mice at 9 months of age (Fig. 2B–C, E and F). There was a 3.24-fold  $\pm 0.55$ , ( $p = .018$ ) increase in phospho-DRP1 (Ser637) implicated in fission inhibition in Camk2a/hTDP-43 mice compared to wild-type littermates in 4-month-old mice. Though there was an increase trend in expression of pDRP1 (Ser637) in *APP/PS1* and Camk2a/hTDP-43 it was not significantly increased at 9 months of age (WT to *APP/PS1* ( $p = .44$ ); WT to Camk2a/hTDP-43 ( $p = .10$ ) (Fig. 2B,D,E,G)[8,13]. Taken together with the morphological changes in mitochondria observed these results indicate that TDP-43 may play a role in age-dependent changes in mitochondrial dynamics through regulation of MFN2.

### 3.3. Ultrastructure of endogenous TDP-43 proximal to mitochondria

TDP-43 has been shown to mislocalize from the nucleus to the cytoplasm in response to beta-amyloid toxicity. Likewise, in both FTLD and ALS abnormally aggregated TDP-43, in the form of inclusion bodies, is found in the cytoplasm. Interestingly, abnormal TDP-43 inclusion bodies are also frequently seen in late-onset AD and other age-related neurodegenerative diseases [17]. Recently, it was shown that TDP-43 with ALS-associated mutations localized to mitochondria whereas very little wild-type TDP-43 was detected in mitochondria [47]. In *APP/PS1* mice there is an increase in cytoplasmic endogenous TDP-43 compared to wild-type mice [14]. Immunogold TEM revealed both a nuclear and cytoplasmic distribution of endogenous TDP-43 in 8-month old wild-type and *APP/PS1* mice (Fig. S8). TDP-43 distribution





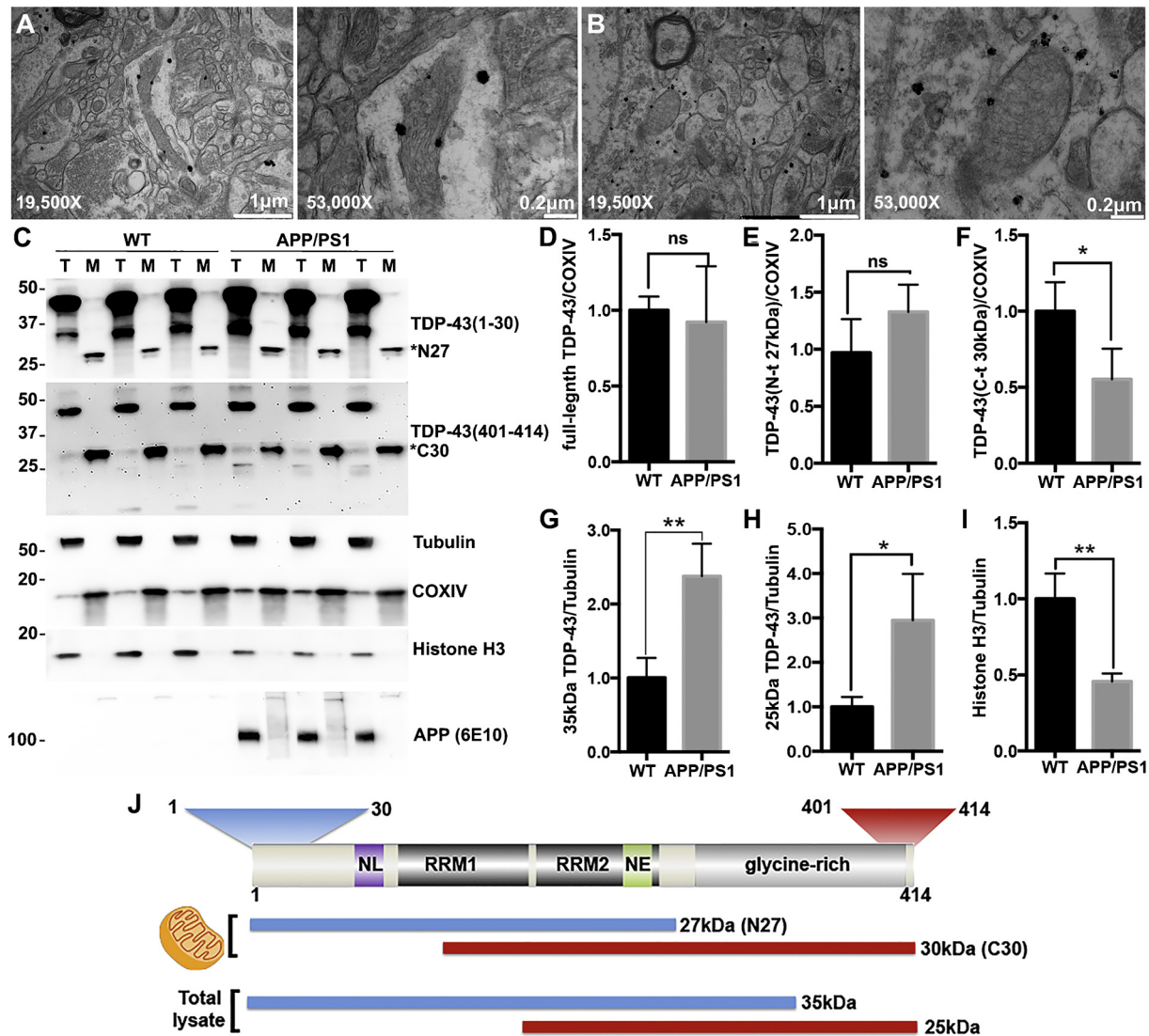
**Fig. 2. Selective expression of TDP-43 induces an age-dependent increase in Mitofusin-2.** A) Transmission electron microscopy of hippocampal neurons in 9-month old APP/PS1 and Camk2a/hTDP-43/APP/PS1 at 20,000X. B) Western blot for MFN2, OPA1, phospho-DRP1 (pDRP1) (Ser637), COXIV and Tubulin from lysate of cortex extracted from 4-month-old non-transgenic (WT), APP/PS1, Camk2a/hTDP-43, and Camk2a/hTDP-43/APP/PS1 mice. C & D) Quantitation of 4-month-old MFN2 and pDRP1 expression over Tubulin normalized to wild-type. E) Western blot for MFN2, OPA1, pDRP1(Ser637), and Tubulin from lysate of cortex extracted from 9-month-old non-transgenic (WT), APP/PS1, and Camk2a/hTDP-43 mice. F & G) Quantitation of 9-month-old MFN2 and pDRP1 expression over Tubulin normalized to wild-type.

throughout hippocampal cells was similar between APP/PS1 and wild-type mice (Fig. S8). TDP-43 was also found in close proximity to mitochondria to a similar degree in both the APP/PS1 and wild-type mice (Fig. 3A and B, Fig. S8), which may indicate that TDP-43 does not play a role in the mitochondrial dysfunction seen in APP/PS1 mice. In the APP/PS1 mice, there appeared to be no distinct aggregation of TDP-43 (Fig. S8). There were clusters of TDP-43 speckles in the cytoplasm that may be indicative of sites of active translation or stress granules, similar to the ultrastructure of TIA1, an RNA binding protein that promotes stress granule formation and has been shown previously to localize to TDP-43 (Fig. S8) [15]. This is similar to what has been observed in sporadic ALS [30,34]. With TDP-43 localized to mitochondria and recent work showing TDP-43 present in the mitochondrial fraction, we

next wanted to determine if TDP-43 increased in the mitochondrial fraction in APP/PS1 mice [46,48].

#### 3.4. Mitochondrial isolation reveals N-terminal and C-terminal TDP-43 fragments

In order to examine if there was an increase in mitochondrial TDP-43, we used wild-type and APP/PS1 mouse cortical and hippocampal tissue and performed Percoll density gradient fractionation to isolate mitochondria [38]. Furthermore, we utilized two different TDP-43 antibodies to specifically detect N-terminal and C-terminal TDP-43 fragments [14]. We detected distinctly different TDP-43 fragment sizes enriched in mitochondrial fractions: a 27 kDa N-terminal fragment



**Fig. 3. Mitochondrial fraction enhanced TDP-43 N- and C-terminal fragments.** Transmission electron micrograph of immunogold labeled TDP-43 in the hippocampus of 8-month-old A) wild-type and B) APP/PS1 mice. TDP-43 localizes around the mitochondria in wild-type and APP/PS1 mice; 19,500X (left) and 53,000X (right) magnification. C) Mitochondrial fraction (Percoll gradient) from the cortex/hippocampus of 9-month-old wild-type and APP/PS1 mice, immunoblotted for TDP-43 N-terminal (N-t), C-terminal (C-t), tubulin, COXIV, Histone H3, and APP (6E10) D) Quantification of mitochondrial full-length TDP-43 normalized to COXIV. E) Quantification of N-terminal TDP-43 (27 kDa) normalized to COXIV in mitochondrial fractions (band indicated by N27 in C). F) Quantification of C-terminal TDP-43 (30 kDa) normalized to COXIV in mitochondrial fractions (band indicated by C30 in C). G) Quantification of 35 kDa TDP-43 (N-terminal) from whole cell lysate normalized to Tubulin. H) Quantification of 25 kDa TDP-43 (C-terminal) from whole cell lysate normalized to Tubulin. I) Quantification of histone H3 normalized to Tubulin from whole cell lysates. T, total lysate; M, mitochondrial fraction; \* $p < 0.05$ , \*\* $p < 0.01$ . Unpaired *t*-test, two-tailed. Error bars represent standard deviation. J) Domain structure of TDP-43 displaying antibody epitopes for TDP-43 N-terminal (1–30) and C-terminal (401–414) and the various forms of TDP-43 detected by each from cortex/hippocampus mitochondrial fractions and total lysates.

(N27) and a 30 kDa C-terminal fragment (C30) (Fig. 3C). Although we expected to see an increase in full-length TDP-43 in APP/PS1 mice, we detected very little full-length TDP-43, which was not expressed significantly more highly than non-transgenic mice (Fig. 3C and D). However, there was a marginal increase in N-terminal TDP-43 (27 kDa) (not significant) and a significant decrease in C-terminal TDP-43 (30 kDa) (WT  $1.00 \pm 0.110$ , APP/PS1  $0.552 \pm 0.116$ ,  $p = .049$ ) (Fig. 3C, E and F). There was also a significant increase in the previously characterized 35 kDa and 25 kDa species in the total cell lysates of APP/PS1 mice compared to wild-type, which were not found enriched in mitochondria (Fig. 3C, F and G). In total cell lysates, the N-terminal TDP-43 antibody differentially detected expression of the 35 kDa TDP-43 whereas the C-terminal antibody detected 25 kDa TDP-43, which are both significantly increased in APP/PS1 mice (Fig. 3C, G and H). Although histone H3 was used as a marker for possible nuclear

protein contamination in mitochondria fractions, we noted a significant decrease in histone H3 expression in APP/PS1 ( $0.457 \pm 0.0304$ ,  $p = .006$ ) compared to wild-type ( $1.00 \pm 0.0962$ ), which may indicate a loss of soluble histone expression that needs further investigation (Fig. 3C, I).

Due to the presence of the 27 kDa and 30 kDa TDP-43 fragments in the mitochondrial fractions, we hypothesized that TDP-43 was processed by mitochondrial peptidases in order to facilitate entry into mitochondria. We overexpressed several mitochondrial peptidases and screened for 27 kDa and 30 kDa TDP-43 by Western blotting. We chose to focus on mitochondrial processing peptidase (MPP), presenilin-associated rhomboid-like protease (PARL), and ATPase family gene 3-like 2 (AFG3L2) because they were shown to affect degradation of phosphatase and tensin homologue-induced kinase 1 (PINK1), which recruits Parkin to mitochondrial membranes during Parkin-mediated



mitophagy [16]. There was no increase in TDP-43 processing of the C30 fragment however there was significant increase of  $2.37 \pm 0.11$  ( $p = .004$ ) of the N27 fragment in total lysate as a result of overexpression of peptidase mitochondrial processing alpha subunit (PMPCA) (Fig. S9). This mechanism of TDP-43 processing by PMPCA needs further investigation.

#### 4. Discussion

Mitochondria are involved in multiple processes in the cell including: oxidative phosphorylation to produce ATP, lipid metabolism, calcium homeostasis, apoptosis, and other functions [12,53]. With the high-energy demand of neurons mitochondria are vital for synaptic homeostasis [42]. Mitochondrial dysfunction is evident in age-related neurodegenerative diseases including, but not limited to, Parkinson disease, ALS, AD, and Huntington disease [4,5,33,35]. Full-length TDP-43 localizes to the mitochondria during stress in familial ALS and both wild-type and mutant TDP-43 bind to mitochondria-transcribed mRNAs for mitochondria-encoded NADH:ubiquinone oxidoreductase core subunit 3 (ND3) and subunit 6 (ND6) which interfere with their expression causing complex I disassembly [48]. However, one report described low levels of TDP-43 associated with the mitochondria and no change in mitochondrial bioenergetics in ALS patient-derived fibroblasts and an ALS mouse model [23]. It has been recently shown that no TDP-43 pathology was observed in primary fibroblasts derived from sporadic ALS patients [11]. Pathogenic mechanism in ALS in part show increases in oxidative stress and mitochondrial dysfunction (reviewed in [9]). With no phosphorylated TDP-43 pathology present in patient derived fibroblasts and only ubiquitin pathology seen in the TARDBP A315T mouse model used for both these studies could limit recapitulation of the mitochondrial dysfunction observed in ALS patients [11,51].

A proteomic screen of TDP-43 interacting proteins identified the recently discovered mitophagy receptor PHB2 as interacting with TDP-43 [52]. We hypothesize that TDP-43, through its interaction with PHB2, may be involved in tethering mitochondria for degradation. When TDP-43 is knocked down, less activation of CCCP-induced mitophagy occurs. The complex interaction between TDP-43 and PHB2 may also be mediated through MFN2 and/or VDAC1 that was also pulled down with TDP-43. It has been previously reported that muscle-specific Mfn2 knockout mice reduces mitophagy and alters metabolic homeostasis in an age-dependent manner [36]. A recent study in *Drosophila melanogaster* showed that increasing mitofusin/marf ameliorated neurodegeneration in flies overexpressing human TDP-43 [24]. In mice overexpressing TDP-43, mitochondria aggregation was associated with an increase in fission proteins [54,55]. Through selective expression of TDP-43 in the hippocampus and cortex at 4 months of age there is an increase in pDRP1(Ser637) shown to be inhibitory of fission and an age-dependent increase in the fusion protein, MFN2, which also interacts in complex with TDP-43. This may relate to the age-dependent changes associated with fusion/fission dynamics observed in our model of TDP-43 overexpression. We further show in human cells that knocking down TDP-43 also decrease MFN2, which suggests that TDP-43 may have a pivotal role in mitochondrial dynamics.

The pathological increase in TDP-43 in the mitochondria may contribute to the changes associated with ALS [48]. In APP/PS1 mice we observed no increase in full-length TDP-43 in the mitochondria fraction; however, N- and C- fragments of TDP-43 were enhanced in the mitochondrial fraction. There was also a marginal decrease in the TDP-43 C30 fragment in APP/PS1 mitochondria, which may indicate that a balance between the N- and C-terminal fragments are required for normal homeostasis of TDP-43 in the mitochondria. When the mitochondrial peptidase PMPCA is overexpressed there was an increase in the N27 fragment. It has been previously reported that PMPCA interacts in complex with ubiquinol-cytochrome c reductase core protein 1 (UQCRC1) [44]. Interestingly, UQCRC1 was one of the mitochondrial proteins that co-immunoprecipitated with TDP-43. Although the

relationship between PMPCA and TDP-43 processing and the role of TDP-43 plays in mitophagy needs further investigation, these data collectively help to further characterize the relationship between TDP-43 and the mitochondria.

#### 5. Conclusion

Our findings do not show an increase in full-length TDP-43 localized to the mitochondrial fraction in APP/PS1 mice. Interestingly, the TDP-43C- and N-terminal fragments are enriched in the mitochondrial fraction and when the mitochondrial peptidase PMPCA is overexpressed we observe an increase in the N27 fragment. The role of these fragments needs further study. Investigating proteins that interact with TDP-43 may elucidate the normal function and delicate balance TDP-43 plays in neurodegeneration. These observations expand our understanding of mitophagy and fusion/fission dynamics and provide novel insights into the possible role TDP-43 plays in mitochondrial dysfunction.

#### Author contributions

S.D. designed and performed most of the experiments, analyzed all data, prepared figures and tables, and contributed to writing the paper; J.S. and S.I. performed some experiments; C.K. analyzed proteomics data, generated the interactome map, and edited the manuscript; J.D. performed and analyzed proteomics and contributed to the writing; N.C. contributed to experimental design, data analysis, and writing; M.G. contributed to experimental design, data interpretation, and writing the paper. All authors read and approved the final manuscript.

#### Fundings

This work was funded by the Alzheimer's Association New Investigator Research Grant: NIRG-12-241456, the National Institute on Aging: 1K01AG042500, Delaware IDEa Network of Biomedical Research Excellence (INBRE) Pilot Award: NIH-NIGMS: 5P20GM103446, NIH-NIGMS Centers of Biomedical Research Excellence (COBRE): 5P20GM103653, the National Science Foundation (MRI): 1728804 and a Delaware Economic Development Office Grant from the State of Delaware.

#### Ethics approval

All experiments were approved by and performed according to the ethical guidelines provided by the Animal Care and Use Committees at Delaware State University and at the University of Delaware Animal Facilities.

#### Conflict of interest

The authors declare that they have no conflict of interest.

#### Acknowledgements

We want to thank Randall Massey at the University of Wisconsin-Madison Electron Microscope Facility and Jean Ross at the Delaware Biotechnology Institute, University of Delaware for their electron microscopy expertise.

#### Appendix A. Supplementary data

Supplementary data associated with this article can be found, in the online version, at <https://doi.org/10.1016/j.neulet.2018.04.053>.



## References

- [1] C. Amador-Ortiz, W.L. Lin, Z. Ahmed, D. Personett, P. Davies, R. Duara, N.R. Graff-Radford, M.L. Hutton, D.W. Dickson, TDP-43 immunoreactivity in hippocampal sclerosis and Alzheimer's disease, *Ann. Neurol.* 61 (2007) 435–445.
- [2] T. Arai, M. Hasegawa, H. Akiyama, K. Ikeda, T. Nonaka, H. Mori, D. Mann, K. Tsuchiya, M. Yoshida, Y. Hashizume, T. Oda, TDP-43 is a component of ubiquitin-positive tau-negative inclusions in frontotemporal lobar degeneration and amyotrophic lateral sclerosis, *Biochem. Biophys. Res. Commun.* 351 (2006) 602–611.
- [3] T. Arai, I.R. Mackenzie, M. Hasegawa, T. Nonaka, K. Niizato, K. Tsuchiya, S. Iritani, M. Onaya, H. Akiyama, Phosphorylated TDP-43 in Alzheimer's disease and dementia with Lewy bodies, *Acta Neuropathol.* 117 (2009) 125–136.
- [4] J.P. Blass, G.E. Gibson, S. Hoyer, The role of the metabolic lesion in Alzheimer's disease, *J. Alzheimers Dis.* 4 (2002) 225–232.
- [5] E. Bossy-Wetzal, A. Petrilli, A.B. Knott, Mutant huntingtin and mitochondrial dysfunction, *Trends Neurosci.* 31 (2008) 609–616.
- [6] E. Buratti, L. De Conti, C. Stuani, M. Romano, M. Baralle, F. Baralle, Nuclear factor TDP-43 can affect selected microRNA levels, *FEBS J.* 277 (2010) 2268–2281.
- [7] E. Buratti, T. Dork, E. Zuccato, F. Pagani, M. Romano, F.E. Baralle, Nuclear factor TDP-43 and SR proteins promote in vitro and in vivo CFTR exon 9 skipping, *EMBO J.* 20 (2001) 1774–1784.
- [8] C.R. Chang, C. Blackstone, Cyclic AMP-dependent protein kinase phosphorylation of Drp1 regulates its GTPase activity and mitochondrial morphology, *J. Biol. Chem.* 282 (2007) 21583–21587.
- [9] L. Chico, M. Modena, A. Lo Gerfo, G. Ricci, E. Caldarazzo Ienco, L. Ryskaline, F. Fornai, G. Siciliano, Cross-talk between pathogenic mechanisms in neurodegeneration: the role of oxidative stress in Amyotrophic Lateral Sclerosis, *Arch. Ital. Biol.* 155 (2017) 131–141.
- [10] S. Cipolat, O. Martins de Brito, B. Dal Zilio, L. Scorrano, OPA1 requires mitofusin 1 to promote mitochondrial fusion, *Proc. Natl. Acad. Sci. U. S. A.* 101 (2004) 15927–15932.
- [11] J. Codron, P. Vourc'h, H. Veyrat-Durebex, S. Blasco, V. Kane, F. Procaccio, C. Letournel, G. Verny, P. Lenears, A. Chevrollier, Primary fibroblasts derived from sporadic amyotrophic lateral sclerosis patients do not show ALS cytological lesions, *Amyotroph Lateral Scler Frontotemporal Degener.* (2018) 1–11.
- [12] R.A. Coleman, D.P. Lee, Enzymes of triacylglycerol synthesis and their regulation, *Prog. Lipid Res.* 43 (2004) 134–176.
- [13] J.T. Cribbs, S. Strack, Reversible phosphorylation of Drp1 by cyclic AMP-dependent protein kinase and calcineurin regulates mitochondrial fission and cell death, *EMBO Rep.* 8 (2007) 939–944.
- [14] S.A. Davis, K.A. Gan, J.A. Dowell, N.J. Cairns, M.A. Gitcho, TDP-43 expression influences amyloid-beta plaque deposition and tau aggregation, *Neurobiol. Dis.* 103 (2017) 154–162.
- [15] N. Gilks, N. Kedersha, M. Ayodele, L. Shen, G. Stoecklin, L.M. Dember, P. Anderson, Stress granule assembly is mediated by prion-like aggregation of TIA-1, *Mol. Biol. Cell* 15 (2004) 5383–5398.
- [16] A.W. Greene, K. Grenier, M.A. Aguilera, S. Muisse, R. Farazifard, M.E. Haque, H.M. McBride, D.S. Park, E.A. Fon, Mitochondrial processing peptidase regulates PINK1 processing, import and Parkin recruitment, *EMBO Rep.* 13 (2012) 378–385.
- [17] A.M. Herman, P.J. Khandelwal, B.B. Stanczyk, G.W. Rebeck, C.E. Moussa, beta-amyloid triggers ALS-associated TDP-43 pathology in AD models, *Brain Res.* 1386 (2011) 191–199.
- [18] S. Higashi, E. Iseki, R. Yamamoto, M. Minegishi, H. Hino, K. Fujisawa, T. Togo, O. Katsuse, H. Uchikado, Y. Furukawa, K. Kosaka, H. Arai, Concurrence of TDP-43, tau and alpha-synuclein pathology in brains of Alzheimer's disease and dementia with Lewy bodies, *Brain Res.* 1184 (2007) 284–294.
- [19] K. Hong, Y. Li, W. Duan, Y. Guo, H. Jiang, W. Li, C. Li, Full-length TDP-43 and its C-terminal fragments activate mitophagy in NSC34 cell line, *Neurosci. Lett.* 530 (2012) 144–149.
- [20] P. Huang, T. Yu, Y. Yoon, Mitochondrial clustering induced by overexpression of the mitochondrial fusion protein Mfn2 causes mitochondrial dysfunction and cell death, *Eur. J. Cell Biol.* 86 (2007) 289–302.
- [21] J.L. Jankowsky, D.J. Fadale, J. Anderson, G.M. Xu, V. Gonzales, N.A. Jenkins, N.G. Copeland, M.K. Lee, L.H. Younkin, S.L. Wagner, S.G. Younkin, D.R. Borchelt, Mutant presenilins specifically elevate the levels of the 42 residue beta-amyloid peptide in vivo: evidence for augmentation of a 42-specific gamma secretase, *Hum. Mol. Genet.* 13 (2004) 159–170.
- [22] K.A. Jellinger, Neuropathological aspects of Alzheimer disease, Parkinson disease and frontotemporal dementia, *Neurodegener. Dis.* 5 (2008) 118–121.
- [23] H. Kawamata, P. Peixoto, C. Konrad, G. Palomo, K. Bredvik, M. Gerges, F. Valsecchi, L. Petrucelli, J.M. Ravits, A. Starkov, G. Manfredi, Mutant TDP-43 does not impair mitochondrial bioenergetics in vitro and in vivo, *Mol. Neurodegener.* 12 (2017) 37.
- [24] B. Khalil, M.J. Cabiro-Pol, L. Miguel, A.J. Whitworth, M. Lecourtis, J.C. Lievens, Enhancing Mitofusin/Marf ameliorates neuromuscular dysfunction in *Drosophila* models of TDP-43 proteinopathies, *Neurobiol. Aging* 54 (2017) 71–83.
- [25] V. Lahiri, D.J. Klionsky, PHB2/prohibitin 2: An inner membrane mitophagy receptor, *Cell Res.* 27 (2017) 311–312.
- [26] N.F. Liachko, A.D. Saxton, P.J. McMillan, T.J. Strovass, H.N. Currey, L.M. Taylor, J.M. Wheeler, A.L. Oblak, B. Ghetti, T.J. Montine, C.D. Keene, M.A. Raskind, T.D. Bird, B.C. Kraemer, The phosphatase calcineurin regulates pathological TDP-43 phosphorylation, *Acta Neuropathol.* 132 (2016) 545–561.
- [27] C.F. Lippa, A.L. Rosso, L.D. Stutzbach, M. Neumann, V.M. Lee, J.Q. Trojanowski, Transactive response DNA-binding protein 43 burden in familial Alzheimer disease and Down syndrome, *Arch. Neurol.* 66 (2009) 1483–1488.
- [28] J. Lu, W. Duan, Y. Guo, H. Jiang, Z. Li, J. Huang, K. Hong, C. Li, Mitochondrial dysfunction in human TDP-43 transfected NSC34 cell lines and the protective effect of dimethoxy curcumin, *Brain Res. Bull.* 89 (2012) 185–190.
- [29] C. Merkwirth, P. Martinelli, A. Korwitz, M. Morbin, H.S. Bronneke, S.D. Jordan, E.I. Rugarli, T. Langer, Loss of prohibitin membrane scaffolds impairs mitochondrial architecture and leads to tau hyperphosphorylation and neurodegeneration, *PLoS Genet.* 8 (2012) e1003021.
- [30] F. Mori, K. Tanji, H.X. Zhang, Y. Nishihira, C.F. Tan, H. Takahashi, K. Wakabayashi, Maturation process of TDP-43-positive neuronal cytoplasmic inclusions in amyotrophic lateral sclerosis with and without dementia, *Acta Neuropathol.* 116 (2008) 193–203.
- [31] M. Neumann, D.M. Sampathu, L.K. Kwong, A.C. Truax, M.C. Micsenyi, T.T. Chou, J. Bruce, T. Schuck, M. Grossman, C.M. Clark, L.F. McCluskey, B.L. Miller, E. Masliah, I.R. Mackenzie, H. Feldman, W. Feiden, H.A. Kretschmar, J.Q. Trojanowski, V.M. Lee, Ubiquitinated TDP-43 in frontotemporal lobar degeneration and amyotrophic lateral sclerosis, *Science* 314 (2006) 130–133.
- [32] I. Pedros, D. Petrov, M. Allgaier, F. Sureda, E. Barroso, C. Beas-Zarate, C. Auladell, M. Pallas, M. Vazquez-Carrera, G. Casadesus, J. Folch, A. Camins, Early alterations in energy metabolism in the hippocampus of APPsw/PS1dE9 mouse model of Alzheimer's disease, *Biochim. Biophys. Acta* 1842 (2014) 1556–1566.
- [33] S. Sasaki, M. Iwata, Ultrastructural study of synapses in the anterior horn neurons of patients with amyotrophic lateral sclerosis, *Neurosci. Lett.* 204 (1996) 53–56.
- [34] S. Sasaki, T. Takeda, N. Shibata, M. Kobayashi, Alterations in subcellular localization of TDP-43 immunoreactivity in the anterior horns in sporadic amyotrophic lateral sclerosis, *Neurosci. Lett.* 478 (2010) 72–76.
- [35] A.H. Schapira, J.M. Cooper, D. Dexter, P. Jenner, J.B. Clark, C.D. Marsden, Mitochondrial complex I deficiency in Parkinson's disease, *Lancet* 1 (1989) 1269.
- [36] D. Sebastian, E. Soriano, J. Segales, A. Irazoki, V. Ruiz-Bonilla, D. Sala, E. Planet, A. Berenguer-Llargo, J.P. Munoz, M. Sanchez-Feutrie, N. Plana, M.I. Hernandez-Alvarez, A.L. Serrano, M. Palacin, A. Zorzano, Mfn2 deficiency links age-related sarcopenia and impaired autophagy to activation of an adaptive mitophagy pathway, *EMBO J.* 35 (2016) 1677–1693.
- [37] X. Shan, P.M. Chiang, D.L. Price, P.C. Wong, Altered distributions of Gemini of coiled bodies and mitochondria in motor neurons of TDP-43 transgenic mice, *Proc. Natl. Acad. Sci. U. S. A.* 107 (2010) 16325–16330.
- [38] N.R. Sims, M.F. Anderson, Isolation of mitochondria from rat brain using Percoll density gradient centrifugation, *Nat. Protoc.* 3 (2008) 1228–1239.
- [39] C. Stribl, A. Samara, D. Trumbach, R. Peis, M. Neumann, H. Fuchs, V. Gailus-Durner, M. Hrabec de Angelis, B. Rathkolb, E. Wolf, J. Beckers, M. Horsch, F. Neff, E. Kremmer, S. Koob, A.S. Reichert, W. Hans, J. Rozman, M. Klingenspor, M. Aichler, A.K. Walch, L. Becker, T. Klopstock, L. Glasl, S.M. Holter, W. Wurst, T. Floss, Mitochondrial dysfunction and decrease in body weight of a transgenic knock-in mouse model for TDP-43, *J. Biol. Chem.* 289 (2014) 10769–10784.
- [40] M.J. Strong, K. Volkening, R. Hammond, W. Yang, W. Strong, C. Leystra-Lantz, C. Shoemaker, TDP43 is a human low molecular weight neurofilament (hNFL) mRNA-binding protein, *Mol. Cell. Neurosci.* 35 (2007) 320–327.
- [41] K. Uryu, H. Nakashima-Yasuda, M.S. Forman, L.K. Kwong, C.M. Clark, M. Grossman, B.L. Miller, H.A. Kretschmar, V.M. Lee, J.Q. Trojanowski, M. Neumann, Concomitant TAR-DNA-binding protein 43 pathology is present in Alzheimer disease and corticobasal degeneration but not in other tauopathies, *J. Neuropathol. Exp. Neurol.* 67 (2008) 555–564.
- [42] P. Verstreken, C.V. Ly, K.J. Venken, T.W. Koh, Y. Zhou, H.J. Bellen, Synaptic mitochondria are critical for mobilization of reserve pool vesicles at *Drosophila* neuromuscular junctions, *Neuron* 47 (2005) 365–378.
- [43] K. Volkening, C. Leystra-Lantz, W. Yang, H. Jaffee, M.J. Strong, Tar DNA binding protein of 43 kDa (TDP-43), 14-3-3 proteins and copper/zinc superoxide dismutase (SOD1) interact to modulate NFL mRNA stability. Implications for altered RNA processing in amyotrophic lateral sclerosis (ALS), *Brain Res.* 1305 (2009) 168–182.
- [44] C. Wan, B. Borgeson, S. Phanse, F. Tu, K. Drew, G. Clark, X. Xiong, O. Kagan, J. Kwan, A. Bezginov, K. Chessman, S. Pal, G. Cromar, O. Papoulas, Z. Ni, D.R. Boutz, S. Stoilova, P.C. Havugimana, X. Guo, R.H. Maltby, M. Sarov, J. Greenblatt, M. Babu, W.B. Derry, E.R. Tillier, J.B. Wallingford, J. Parkinson, E.M. Marcotte, A. Emili, Panorama of ancient metazoan macromolecular complexes, *Nature* 525 (2015) 339–344.
- [45] H.Y. Wang, I.F. Wang, J. Bose, C.K. Shen, Structural diversity and functional implications of the eukaryotic TDP gene family, *Genomics* 83 (2004) 130–139.
- [46] W. Wang, H. Arakawa, L. Wang, O. Okolo, S.L. Siedlak, Y. Jiang, J. Gao, F. Xie, R.B. Petersen, X. Wang, Motor-coordinative and cognitive dysfunction caused by mutant TDP-43 could be reversed by inhibiting its mitochondrial localization, *Mol. Ther.* 25 (2017) 127–139.
- [47] W. Wang, L. Li, W.L. Lin, D.W. Dickson, L. Petrucelli, T. Zhang, X. Wang, The ALS disease-associated mutant TDP-43 impairs mitochondrial dynamics and function in motor neurons, *Hum. Mol. Genet.* 22 (2013) 4706–4719.
- [48] W. Wang, L. Wang, J. Lu, S.L. Siedlak, H. Fujioka, J. Liang, S. Jiang, X. Ma, Z. Jiang, E.L. da Rocha, M. Sheng, H. Choi, P.H. Lerou, H. Li, X. Wang, The inhibition of TDP-43 mitochondrial localization blocks its neuronal toxicity, *Nat. Med.* 22 (8) (2016) 869–878.
- [49] X. Wang, X.L. Zhao, L.L. Xu, C.F. Wang, L.F. Wei, Z. Liu, H. Yang, P. Wang, Z.H. Xie, J.Z. Bi, Mitophagy in APPsw/PS1dE9 transgenic mice and APPsw stably expressing in HEK293 cells, *Eur. Rev. Med. Pharmacol. Sci.* 19 (2015) 4595–4602.
- [50] X. Wang, S. Zhou, X. Ding, M. Ma, J. Zhang, Y. Zhou, E. Wu, J. Teng, Activation of ER stress and autophagy induced by TDP-43 A315T as pathogenic mechanism and the corresponding histological changes in skin as potential biomarker for ALS with the mutation, *Int. J. Cell. Mol. Biol.* 11 (2015) 1140–1149.
- [51] I. Węgorzewska, S. Bell, N.J. Cairns, T.M. Miller, R.H. Baloh, TDP-43 mutant transgenic mice develop features of ALS and frontotemporal lobar degeneration,

- Proc. Natl. Acad. Sci. U. S. A. 106 (2009) 18809–18814.
- [52] Y. Wei, W.C. Chiang, R. Sumpter Jr., P. Mishra, B. Levine, Prohibitin 2 is an inner mitochondrial membrane mitophagy receptor, *Cell* 168 (2017) 224–238 (e210).
- [53] J.L. Werth, S.A. Thayer, Mitochondria buffer physiological calcium loads in cultured rat dorsal root ganglion neurons, *J. Neurosci.* 14 (1994) 348–356.
- [54] Y.F. Xu, T.F. Gendron, Y.J. Zhang, W.L. Lin, S. D'Alton, H. Sheng, M.C. Casey, J. Tong, J. Knight, X. Yu, R. Rademakers, K. Boylan, M. Hutton, E. McGowan, D.W. Dickson, J. Lewis, L. Petrucelli, Wild-type human TDP-43 expression causes TDP-43 phosphorylation, mitochondrial aggregation, motor deficits, and early mortality in transgenic mice, *J. Neurosci.* 30 (2010) 10851–10859.
- [55] Y.F. Xu, Y.J. Zhang, W.L. Lin, X. Cao, C. Stetler, D.W. Dickson, J. Lewis, L. Petrucelli, Expression of mutant TDP-43 induces neuronal dysfunction in transgenic mice, *Mol. Neurodegener.* 6 (2011) 73.