

University of Northern Iowa UNI ScholarWorks

Student Disability Services Newsletter

Student Disability Services

12-2011

Student Disability Services Campus Newsletter, December 2011

University of Northern Iowa. Office of Student Disability Services.

Copyright ©2011 Office of Student Disability Services, University of Northern Iowa

Follow this and additional works at: <https://scholarworks.uni.edu/sdsnews>

 Part of the [Higher Education Commons](#)

Let us know how access to this document benefits you

Recommended Citation

University of Northern Iowa. Office of Student Disability Services., "Student Disability Services Campus Newsletter, December 2011" (2011). *Student Disability Services Newsletter*. 3.
<https://scholarworks.uni.edu/sdsnews/3>

This Newsletter is brought to you for free and open access by the Student Disability Services at UNI ScholarWorks. It has been accepted for inclusion in Student Disability Services Newsletter by an authorized administrator of UNI ScholarWorks. For more information, please contact scholarworks@uni.edu.

Letter from the Coordinator

With the end of the semester upon us, I wanted to take this chance to thank everyone that assisted in arranging and providing accommodations to our students.



Whether it was providing a copy of notes, arranging a separate location to take an exam, or assisting with any of the other accommodations and services our students receive, I know that they (and I) appreciate your dedication to helping students succeed at UNI.

As we begin preparations for next semester, I want to remind faculty that syllabus statements regarding disability services can be found on our website at: <http://www.uni.edu/sds/SyllabusStatement.shtml>

Additionally, students that have already been approved for services can begin scheduling appointments to complete accommodation forms.

To schedule an appointment, please call our office at 319-273-2677.

Finally, if you're a student with a disability that hasn't registered for services with our office, and you're planning on requesting accommodations next semester, now is a great time to start the process! More information about registering with our office can be found at: <http://www.uni.edu/sds/ApplyforServices.shtml>

I wish you all the best of luck with finals and have a safe and relaxing winter break!

-Ashley Brickley, Coordinator

Getting to Know Accommodations: Separate Location for Tests

What is a separate location for tests?

Students who can take tests in a separate location have the chance to complete a test to the best of their ability in an environment other than the classroom.

Why is this accommodation provided?

A separate location for tests may be a necessity for a student who requires an environment with fewer distractions, who uses a computer or who uses a

reader and/or scribe to complete exams. In order to receive this accommodation, a student must provide appropriate, professional and reasonably current documentation.

How can an instructor help with this accommodation?

Faculty currently arrange separate locations with the first priority being a location in their department.

If instructors are unable to find an appropriate location in their department, students may complete their exam in the Student Disability Services office

by completing an Exam Accommodation Request one week prior to the test. Faculty may either use campus mail, fax, hand delivery or email to submit a copy of the test to disabilityservices@uni.edu with cc's to karen.phillips@uni.edu and ashley.brickley@uni.edu.



Helpful Study Strategies for Finals: ASPIRE

Have you ever hesitated to start a project or paper or put off studying for a test? Well, it may be that you just don't know HOW to start. Here are some quick tips to help you relieve your anxiety and uncertainty about completing assignments and studying the right way!

Approach

Approach your studies with a positive attitude.

Select, Survey, Scan

Select a reasonable chunk of material to study

Survey the headings, graphics, pre- and post questions to get an overview

Scan the text for keywords and vocabulary: mark what you don't understand

Put, Piece

Put aside your books and notes

Piece together what you've studied and summarize what you understand.

Investigate, Inquire, Inspect

Investigate alternative sources of information – Read, read, read!

Inquire from support professionals – Instructors & Tutors!

Inspect what you did not understand – Ask questions!

Reexamine, Reflect, Relay

Reexamine the content:

What questions are there yet to ask? Is there something I am missing?

Reflect on the material:

How can I apply this to my project? Is there a new application for it?

Relay understanding:

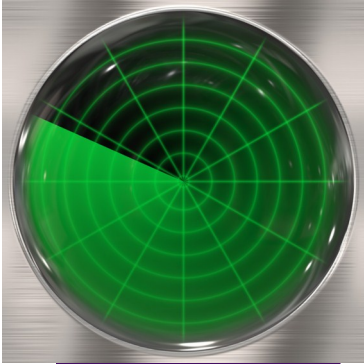
Can I explain this to my fellow students? Will they understand it better if I do?

Evaluate, Examine, Explore

Evaluate your grades on tests and tasks: look for a pattern

Examine your progress: toward achieving your goals

Explore options: with a teacher, support professional, tutor, parent if you are not satisfied.

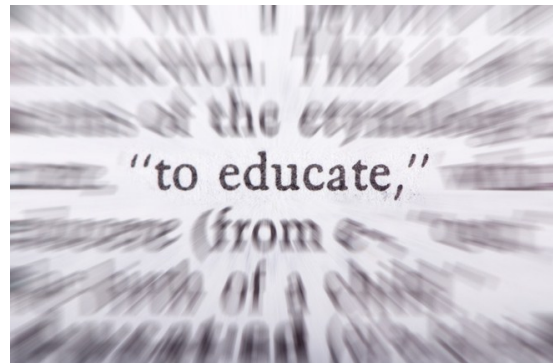


Universal Design

Universal Design for Instruction (UDI) is an approach to teaching that consists of the proactive design and use of inclusive instructional strategies that benefit a broad range of learners including students with disabilities. The nine Principles of UDI provide a framework for college faculty to use when designing or revising instruction to be responsive to diverse student learners and to minimize the need for "special" accommodations and retrofitted changes to the learning environment. UDI operates on the premise that the planning and delivery of instruction as well as the evaluation of learning can incorporate inclusive attributes that embrace diversity in learners without compromising academic standards. (University of Connecticut, 2002)

To learn more, check out this Universal Design for Instruction Fact sheet from the University of Connecticut! http://www.facultyware.uconn.edu/files/UDI2_Fact_Sheet.pdf

You can also get an online tutorial on using Universal Design for Instruction in the classroom and beyond with the University of Washington resources found at http://www.washington.edu/doit/CUDE/ude_onlinetut.html.



Assistive Technology: Read & Write Gold 10 Feature



There or their, where or were?

Have you ever been confused about like-sounding words or words that look similar? Read & Write Gold has a button for that on the program's easy-to-use toolbar!



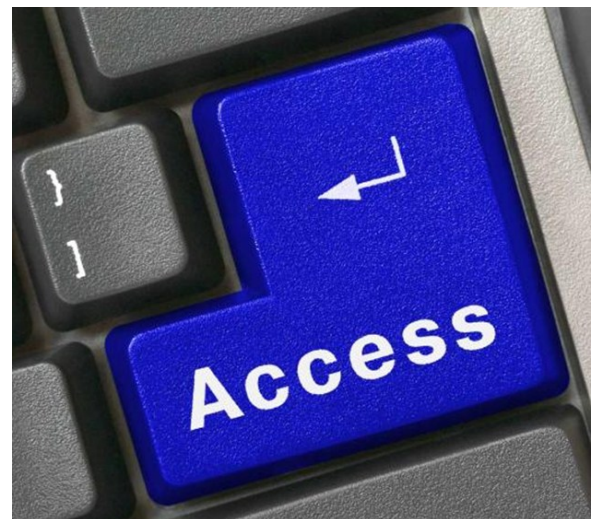
Sounds like and Confusable words: click this button to identify same sounding and confusable words, such as their and there. Definitions can be read aloud by clicking Play.

These are just a few of many features that can support your

reading and writing success. The new software is available for all students in every UNI Computer Consulting Center computer lab. If you would like to try Read & Write Gold for yourself; check out the available computer labs at the following website:

www.uni.edu/its/labs/sccs.

Read & Write Gold is new software that supports students that have reading and writing difficulties. Read & Write Gold can assist students that have books in alternate format, need website text reading as well as many other features.



AID & Disability Awareness Month

Awareness for Individuals with Disabilities created informational events to celebrate Disability Awareness month in October.

The Student Disability Services (SDS) open house was held on Monday, October 17. SDS staff and students brought attention to AID events occurring during the week and the services provided by the office. Hot chocolate, candy and fliers were provided.

Monday night, Thomas Dirth spoke about the evolutionary and biological processes that fuel societal perceptions of disabilities. The 20+ students, faculty and staff who attended learned about Thomas's personal story regarding disability, his research into the psychology and disability field and also had the opportunity to pose questions.

On Tuesday, October 18, Bri Gowen and Brian Werts, President of AID, conducted a blindness simulation, in which participants learned how to use a white cane and maneuvered their path through the Union through the perspective of one with vision loss. Afterward, Bri spoke about her own experiences and opened up a discussion to speak about participants' experiences.

Meetings are held every other Monday at 3:30 pm in Maucker Union in the lower level Elm Room.

For more information, please contact :Ashley Brickley, AID Advisor at ashley.brickley@uni.edu.



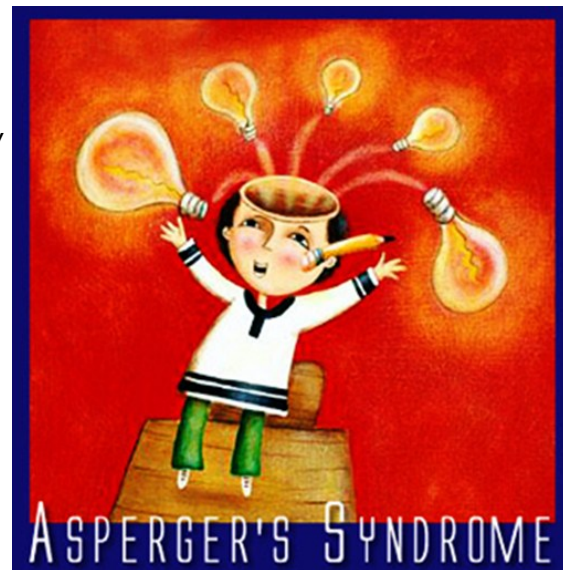
Learn about a Disability: Asperger's Syndrome

Asperger's Syndrome is a mental condition characterized as high functioning autism on the autism spectrum. Individuals with Asperger's Syndrome have a difficult time understanding the underlying nuances of social interactions. With the very literal and logical thought processes that they possess, they have a hard time picking up on things like sarcasm, irony, empathy, non-verbal communication, and communicating their own emotions.

However, many individuals with Asperger's Syndrome are quite gifted in their areas of extreme interest. Once an individual with Asperger's finds a hobby or area of study, they may focus all of their energy and time on learning more and mastering the concept.

Some famous individuals with Asperger's Syndrome include Microsoft founder Bill Gates, author Jane Austen, physicist Albert Einstein, and world famous composer and pianist, Ludwig Van Beethoven (<http://www.asperger-syndrome.me.uk/people.htm>).

To learn more about Asperger's and the college environment, watch the "Understanding Asperger's: A College Professor's Guide" at <http://www.youtube.com/watch?v=233-3jtEZck>.



Faculty Resources: Effective Communication & Disability History

Want to learn to communicate effectively and in a positive way with students who may have a disability? Access the information from the University of Washington DO-IT center and find out what you can do to help engage all of your students at <http://www.washington.edu/doi/Brochures/PDF/effective.pdf>.

The history of disability goes back a long way and portrays a different perspective on the human condition that enriches us all. The University of Alaska recently created a Disability History Exhibit that is also available for viewing online. Learn more at <http://www.hss.state.ak.us/gcdse/history/index.htm>.



Student Disability Services Staff

Ashley Brickley, B.S.

Coordinator
ashley.brickley@uni.edu

Karen Phillips, B.A.

Secretary III
karen.phillips@uni.edu

Amy Dillard, B.A.

Graduate Assistant
adillard@uni.edu

Jayden Wiersma, B.A.

Intern
jayden@uni.edu

Jackie McAndrew, B.A.

Graduate Assistant
jackiemc@uni.edu



Kayla Ferdon

Alternative Texts Coordinator
ferdonk@uni.edu