

2-2000

## [Price Laboratory School] Newsletter, v10n5, February 2000

University of Northern Iowa. Malcolm Price Laboratory School

*Let us know how access to this document benefits you*

Copyright ©2000 Malcolm Price Laboratory School, University of Northern Iowa

Follow this and additional works at: <https://scholarworks.uni.edu/mplsnews>



Part of the [Education Commons](#)

---

### Recommended Citation

University of Northern Iowa. Malcolm Price Laboratory School, "[Price Laboratory School] Newsletter, v10n5, February 2000" (2000). *Malcolm Price Laboratory School Newsletter*. 27.  
<https://scholarworks.uni.edu/mplsnews/27>

This Newsletter is brought to you for free and open access by the Malcolm Price Laboratory School Newsletters at UNI ScholarWorks. It has been accepted for inclusion in Malcolm Price Laboratory School Newsletter by an authorized administrator of UNI ScholarWorks. For more information, please contact [scholarworks@uni.edu](mailto:scholarworks@uni.edu).

## Price Laboratory School Mission —

The Code of Iowa states a "laboratory school shall mean a school operated by an education institution for the purposes of instructing students, training teachers and advancing teaching methods."

## Price Laboratory School fulfills this mission by:

- providing an excellent and innovative education for the Price Laboratory School children it serves from early childhood through grade twelve
- serving as an integral component of the teacher education program of the University of Northern Iowa
- engaging in scholarly work and service directed at advancing teaching practices, resources, and methods for teachers at state, national, and international levels

## Facts About PLS....

PLS has been in existence since 1883 when it was first established as a model school by James C. Gilchrist (first principal of the Iowa State Normal School). Price Laboratory School is the only laboratory school in Iowa; however, PLS is one of approximately a hundred laboratory schools in the U.S., and 43 laboratory school/university partnerships internationally. PLS is one of fifteen Lab Schools in the country with a comprehensive K-12 program.



Price Laboratory School  
University of Northern Iowa  
**PLS**  
Iowa's Laboratory School

# February Newsletter

Price Laboratory School • University of Northern Iowa • February 2000, Vol. X, No. 5

## Vice President Al Gore and Senator Ted Kennedy speak at rally in Nielsen Field House



Vice President Al Gore

### Dear Parents and Supporters,

Standing in our Field House last Saturday, it was impossible not to feel pride in our school. Between 800 and 1000 people were jammed into a rally waiting for the arrival of Senator Ted Kennedy and Vice-President Al Gore. I realize now that for you to understand my pride, I need to share a little of the week that went into this two-hour production.

For those of you who were simply attending another Saturday event, you saw and heard Dr. Upham putting the NU Pep Band through a medley of songs selected to "rev the crowd" prior the speeches. You were not aware that Leonard put in extra hours

all week long, preparing the students to give up a weekend, when he was sick and should have been home in bed. I watched him on that stage jumping to the music, holding his "Gore for President" sign and marveled at the enthusiasm he could still muster after 37 years in the profession. You're not aware that after the rally he then traveled to support six of his students attending a middle school band activity.

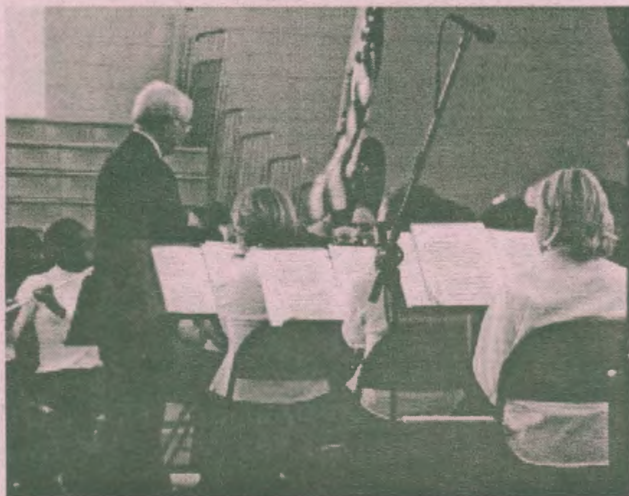
If you weren't here throughout the week, there is no way you could have known that Ms. Swanson was asked one day before the performance to have her choir sing the National Anthem. Then was told that they would have to audition for one of the Vice-President's "Advance Men" to see if they were "appropriate." I was there, in the music room, when those students sang. I watched this "Washington Insider" begin to smile and then ask, "Do you have another favorite song?" I was in the Field House on Saturday when they brought the house down, performing with the pep band for over forty minutes because the Vice-President was late.

If you weren't in the lobby on Thursday or Friday, you missed Mr. Knivsland and his class create an original piece of art that became the

*cont'd next page -*

cont'd. from page 1-

backdrop for the speakers. You missed Senator Evan Bayh (D-Indiana) coming by just to see their work. You would also have missed Rick's wife and two children spending most of one day at school, and helping to complete the project. If you knew all this, it would explain the feeling I had when I looked at the picture in Sunday's paper and saw "Price



Dr. Leonard Upham conducting the NU Pep Band in a medley of songs intended to "rev the crowd" on Saturday.

Lab" between the two featured speakers. If you went home after the basketball game on Friday night, you aren't aware that Neil Phipps, Paul Waack, Bob and Cherin Lee, Rick and Libby Vanderwall, Nadene Davidson and David Christensen

worked until after midnight helping get the facility ready for the event. You also wouldn't know that students Jon Parrish, Jon Wood, Chris Vanderwall, Eric Blair-Broeker and Tom Vanderwall also spent hours on the same project. So, as I stood in the Field House last Saturday I felt pride that our school community had once again come through. The reason for our efforts was not the rental we received for the use of the facility, nor some particular loyalty to a candidate or party. We would have come



Mr. Rick Knivslund and PLS students creating an original art backdrop for Saturday's rally.

together with equal vigor for another candidate, or another cause. The reason for this effort is that it allowed us to showcase our school on a world stage and we are very proud of who we are and what we do.

— Dr. Wendell McConnaha, PLS Director

## National Honor Society Inductees

On behalf of the faculty at Northern University High School, it is my pleasure to announce those students who have been accepted into the Alpha Chapter of The National Honor Society for 1999-2000. They are:

### Seniors

Mary Edith Bozylynsky  
Theresa Price  
Jeff Fisher

### Juniors

Amanda Brasch  
Lewis Colburn  
Salina McCarty  
Charles Robertson  
Kelsey Schmidt  
Chad Timmins

Congratulations to these individuals for all of their accomplishments in the areas of scholarship, service, characters, and leadership. This year's formal induction ceremony was held at 7:00 p.m. on Monday, December 13 in the Butzier Auditorium. A reception followed for all those in attendance at the induction ceremony.

— John Krumbholz, Principal

## KUDOS

**Karlene Kischer-Browne** recently had a story published in the book, *Our Stories: The Soul of Sign Language Interpreting*. Kischer-Browne commented on the content of the book, "You could describe it as a 'chicken soup for the interpreter's soul,' but it's so much more. It really gives a glimpse of just what interpreters do (and put up with). I read all of the stories myself, and really laughed, cried, and yes, it gave me some food for thought. I must say I was really proud to be part of such a select group."

# Announcements

— from John Krumbholz

## Community Advisory Meeting

Many thanks to those of you who took the time to come out in less than desirable weather to attend the initial meeting of our community advisory committee on January 3. We watched the Daggett video on "Defining Quality" and had a great discussion about where Price Lab School currently is in terms of preparing students for the 21<sup>st</sup> century.

During the meeting we discussed the purpose of these advisory meetings. In short, the meetings provide an opportunity for me to listen to you and your thoughts about what we need to do to make our school better, and to answer any questions you might have. In addition to having parents attend, I would like to invite students, alumni, and community members (ie. neighbors, businesses, clergy, etc.) to join us when possible to help us get a more comprehensive picture of where we are and where we need to go. We will meet three or four times per year, for a maximum of two hours per meeting. Attendance is optional.

Our next meeting is scheduled for Monday, March 27 at 1:30 p.m. and then again at 7:00 p.m. in our school auditorium. I will come with a few items to share with you and invite you to come prepared with items you would like to discuss as well.

## Kindergarten Round-Up

Kindergarten Round-Up will be held for Price Laboratory School on Friday, March 31 in the kindergarten area. An informal gathering (getting name tags, etc.) will begin at 12:45 p.m. with a program following at 1:00 p.m. Students will meet their teachers and do a variety of fun learning activities while parents will come with me to take care of clerical/registration details and discuss questions. We will complete the whole program by 3:00 p.m. in time to pick up your other children from school. If you have not yet registered, please contact Judy Vowell at 273-6136 as soon as possible. Openings are limited, so please don't delay.

## Endeavor Award

It is once again time to nominate students, faculty, staff, or community members for the Endeavor Recognition

Award. This award is presented to one person or group of people from each metro school that has gone above and beyond in their efforts to make this school a better place for all of us. Last year's recipient was Karla Flaherty who was recognized for all she has done with our NU Booster Club over the years. You may nominate anyone you feel is deserving of this award. Nomination forms can be found in the main office. The deadline for submitting nominations is February 14, 2000.

## Early Dismissal on February 16

Just a reminder that on February 16, we have an early dismissal scheduled for 11:53 a.m. Elementary students will be served lunch but grades 6-12 will be on their own for lunch.

## Early Dismissal/Late Start/School Cancellations

In the event of an early dismissal due to inclement weather or emergency conditions, the following will hold true:

- Local radio and TV stations will be contacted as soon as a decision has been made. Notification of what Price Laboratory School will be doing should be broadcast repeatedly on all of them. It will be easier for you to listen to these notifications than to try to contact the school directly.
- When the announcement is made for an early emergency dismissal, the phone lines become overburdened immediately. Getting messages to many of the students is very difficult if not impossible. Please be proactive and take the time to discuss with your child exactly what they are to do in the case of an unexpected early dismissal. Then, we can deal with the changes in plans that will inevitably occur.
- We will establish a single dismissal time for all students grades K-12. Those students riding the Cedar Falls Community School buses will be supervised until their bus arrives.
- All after school practices and activities are canceled unless students are contacted otherwise by a coach or activity moderator.
- If there is any confusion, please call the Price Lab info line at 273-7668. The message on this line is final.

In the event that classes are cancelled for an entire day, the follow-

ing will hold true:

- Local radio and TV stations will be contacted as soon as a decision has been made. Notification of what Price Laboratory School will be doing should be broadcast repeatedly on all of them. It will be easier for you to listen to these notifications than to try to contact the school directly.
- All programs held at the Price Lab School building are canceled for that day unless students are contacted otherwise by a coach or activity moderator.
- There will be no athletic practices or activities held that day. If there is any confusion, please call the Price Lab info line at 273-7668. The message on this line is final.

In the event of a late start (whether it be a one hour or two hour delay) due to inclement weather or emergency conditions, the following will all hold true:

- Local radio and TV stations will be contacted as soon as a decision has been made. Notification of what Price Laboratory School will be doing should be broadcast repeatedly on all of them. It will be easier for you to listen to these notifications than to try to contact the school directly.
- All programs will start at the same time (either 9:00 a.m. or 10 a.m.). This includes CDC, elementary, middle, and high school. No student should arrive more than 15 minutes prior to the start of classes. Elementary students should report directly to their class.
- No nursery programs will be held that morning.
- No breakfast program will be served.
- No morning athletic practices or morning activities will be held unless students are contacted otherwise by a coach or activity moderator.
- If there is any confusion, please call the Price Lab info line at 273-7668. The message on this line is final.

## KUDOS

**Paul Horton**, social studies instructor at PLS, was recently awarded an eight week 2000 Summer Fellowship for his project "Creating a Farm-Labor Management Culture in Postbellum North Alabama: The Rise of the Greenback Party, 1876-1888."

# The Music Man March 3, 4, 5

The Music and Theatre Departments of Northern University High School are proud to announce the cast for their spring production, Meredith Willson's The Music Man. Production dates are March 3 and 4 at 7:30 p.m. and March 5 at 2:00 p.m. in Butzier Auditorium of Malcolm Price Laboratory School. Tickets will go on sale as of February 16. Ticket prices are \$4.00 for students/senior citizens and \$5.00 for adults. They can be purchased in the Language Arts Office, by phone at 273-6047, or at the door. All tickets are for general admission. There is no reserved seating. Directors for the production are Dr. Linda Sharp (Vocal Music), Jolene Tagtow (Theatre), and Dr. Leonard Upham (Instrumental Music). Stage manager is Amelia Bales; student assistants are Katie Judas and Abhay Nadipuram. Several other NU and UNI students will be involved in set building, costuming, choreography, and publicity. According to John McClain, in the

December 20, 1957 *Journal-American*, "It is a new musical in the old manner; it has blare and brass, it jiggles and jumps, it has speed and style, and it's people are beguiling." The Music Man is a nostalgic tribute to the time period, the state of Iowa, and its people. We hope that you will make plans to attend one (or more) of the performances! The Music Man is produced by special arrangement with all authorized performance materials supplied by Music Theatre International, 421 West 54<sup>th</sup> Street, New York, NY 10019.

## Cast

Harold Hill	Steve Shelton
Marian Paroo	Laura Wellnitz
Marcellus Washburn	Brian Perry
Mrs. Paroo	Amy McGuire
Winthrop Paroo	Morgan Cawley
Mayor Shinn	Christopher Hardy*
Eulalie Shinn	Liz Schachterle
Tommy Djilas	John Paar
Zaneeta Shinn	Tanya Huber
Amaryllis	Kerianne Puetz
Gracie Shinn	Laurie Reimer
Charlie Cowell	Cameron Puetz
Constable Locke	Kody Asmus
Conductor	Travis Coulter
*Understudy for Harold Hill	

## Visiting Artists Work with PLS Students



The PLS fifth and eighth grade art students assisted visiting artist Greg Schlanger from Austin Peay University in Clarksville, Tennessee, in works for the Prairie Dreams Exhibit on January 10 and 11. Mr. Schlanger and his students brought plywood cutouts of Prairie Chickens, a vanishing species, into the classroom for students to decorate. Mr. Schlanger told students about other environmental art projects he has been involved with and showed photos of the Sockeye salmon sculpture that were decorated by Utah students. They were then asked to create brightly colored designs on the Prairie Chickens with large brushes and latex paint. The Prairie Dreams Exhibit is a large installation that deals with the disappearance of native vegetation and loss of

wildlife habitat in Iowa. The show opened with a gallery talk and reception on January 14 and runs through February 12 at the UNI Gallery in the Kameron Art Building. — Annette Swann, Elementary Art, Associate Professor

## Quartet - School Board

Ewart Dunlop	Ben Oleson
Oliver Hix	Ian Cawley
Jacey Squires	Brian Oleson
Olin Britt	Carlin Dorris

## Pickalittle Cadets

Maud Dunlop	Katy Lyman
Alma Hix	Rochelle Nesbit
Mrs. Squires	Emily Callahan**
Ethel Toffelmier	Mary Weber
**Understudy for Marian Paroo	

## Special Groups

Library/Shipooopi Dancers:  
Erin Heath, Lestacia Granger, Sami Renfro, Katie Judas, Aubrey Huber, Reginald Woods, John Paar, Josh Staebell, Atulya Iyengar

## Speaking Townspeople

Katie Judas, Becky White, Emily Parecki, Jonathon Wood, Josh Staebell, Abhay Nadipuram, Keri Leymaster

## American Gothic Couple

Lynden Davis, Josh Staebell

## Train Scene - Travelling Salesmen

These will be announced later (may include some faculty members).

## Townspeople

Melanie DeVries, Jeff Zeitz, Emily Hansen, Bailey Leymaster, Emily Hershberger, Aimee Cornelius, Anne Thompson, Jenny Schatzberg, Ashley Dorris, Nate Hanson, Stephanie Bremner, Katie Hoodjer, Katie Kolar, Alison Hardy, Ben Davidson, Kate Kilbourn, Ashley Davidson, Jenna Davis, Jaime McConeghey, Heather Pontasch, Chelsea Latusick, Emily Kishman, Brie Penaluna, Katy Huber, Rob Williams, Devon Leslie, Hannah Buck, Catie Wiesley, Joy Hanson, Amanda Koch, Thersa Price, Elenor Mills, Amanda Brasch, Jennifer Grabowski, Krystal McClain, Kristen Perry, Karin Hirter, Tina Bremner, Ashley Granger, Lauren Page, Anson Poe, Brittany Waack, Mandy Dahl, Alexander Rapp, Michaela Gansen

Please note: After we have started rehearsing, there may be additional singing, speaking, or dancing responsibilities assigned to cast members.

— Jolene Tagtow, Language Arts  
Instructor/Theatre Director

## NU High School 1<sup>st</sup> Semester Honor Roll

Students in grades 9-12 with a grade point average of 3.50 or better are eligible for the Honor Roll. A student must be enrolled in at least four academic classes, have all course work completed and receive a grade for all classes with no grade lower than a "D".

### 12<sup>th</sup> Grade

Kody Asmus  
Ashley Atherton  
Jordan Backstrom  
Kevin Conner  
Jeff Fisher  
Eli Horstmeier  
Keri Leymaster  
Jeremy McAdams  
Rochelle Nesbit  
Brian Oleson  
Jesse Piehl  
Theresa Price  
Kristy Reimer  
Josh Secor  
Steven Seufferlein  
Eden Simmer

### 11<sup>th</sup> Grade

Lacey Brakebill  
Amanda Brasch  
David Buhr  
Lewis Colburn  
Julia Cufu  
Desiree Diemer  
Janelle Doddema  
Heather Hooks  
Alan Johnson  
Hannah Kollasch  
Salina McCarty  
Erin McElligatt  
Christopher Paar  
Brian Perry  
Michael Piehl

Bethany Richter  
Tomas Rodriguez  
Andrew Sawyer  
Kelsey Schmidt  
Katherine Spencer  
Jake Struck  
Chad Timmins  
Emily Traw

### 10<sup>th</sup> Grade

Amelia Bales  
Peter Behroozi  
Christina Bremner  
Kate Brumm  
Emily Callahan  
Ashley Davidson  
Jenna Davis  
Jed Ellerbroek, Jr  
Aaron Gillett  
Matthew Girsch  
Hayley Hahn  
Emily Hanson  
Christopher Hardy  
Kevin Holz  
Kathryn Judas  
Bailey Laymaster  
Katherine Lyman  
Rose McCarty  
Brittany Parsons  
Heather Pontasch  
Aaron Popp  
Neal Pruess  
Sean Robinson  
Lindsay Smith

Elizabeth Thompson  
Chris Vanderwall  
Mary Weber  
Nathaniel Wieck

### 9<sup>th</sup> Grade

Matthew Adams  
Hasan Al-Mabuk  
Melanie DeVries  
Jillian Doddema  
Elizabeth Gansen  
Lastascia Granger  
Emily Hershberger  
Aubrey Huber  
Kate Kilbourn  
Jay Kohl  
Daniel Kramer  
Amy Little  
Jade McAdams  
Karrie McCabe  
Colin McElligatt  
Eleanor Mills  
Brittany Nesbit  
Nathaniel Ohrt  
Mallory Piehl  
Cameron Puetz  
Samantha Renfro  
Sameet Sangha  
Elizabeth Schachterle  
Eashaan Vajpeyi  
Joseph Wartick  
Ben Wilson

Media Messages is published by the PLS Technology Team to keep parents of Price Laboratory School K-12 Students and our colleagues at the University of Northern Iowa informed about technology planning, facilitation and integration at Price Laboratory School. We welcome your comments and collaboration.

~ February 2000

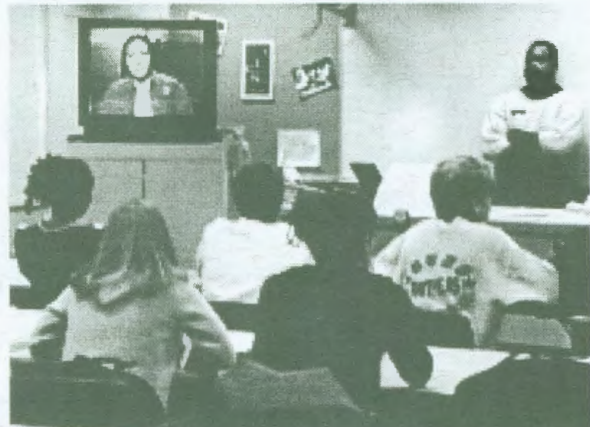
The **PLS Technology Team** includes **Terri McDonald**, chair and Instructional Technology Coordinator, **Garth Cornish**, Instructional Technology Specialist, **Don Darrow**, Technology Education, **Lynn Dykstra**, Communications Director, and **David Tallakson**, Library Media Specialist. UNI students who are assisting us with technology this year include: **Julian Bond**, graduate assistant, **Courtland Butts**, graduate assistant, **Stephanie Canade**, work study student, **Tim Armstrong**, work study student, **Chris Sweet**, work study student, **Justin Stone**, webmaster, and **Sam Zollars**, work study assistant. PLS students include **Peter Behroozi** and **Paul Nadler**.

The Tech Team plans and administers technology at Price Laboratory School, including: setting the agenda for the technology committee meetings, updating the technology plan, offering inservice and support, and making budgetary decisions regarding the purchase of technology and software at PLS. To provide better communication with parents, faculty and staff, the Tech Team is publishing *Media Messages* as an insert in the monthly PLS newsletter. Contact Terri McDonald at 273-3076 or by email at Terri.McDonald@uni.edu for additional information.

Check out our new web site at [www.pls.uni.edu](http://www.pls.uni.edu)

## Technology at Price Lab School

### Students Participate in Virtual Reality Session



On January 21, Karen Couch, PLS physics teacher and her eleventh and twelfth grade students took advantage of an ICN interactive session which was broadcast from the Virtual Reality Applications Center (VRAC) at Iowa State University to over 200 schools. PLS was

one of ten interactive sites. The VRAC center uses an interdisciplinary research approach specializing in the application of synthetic environment (or virtual reality) technology to challenges in engineering and science. ISU students and researchers with all kinds of backgrounds such as engineers, computer scientists, mathematicians, as well as artists, chemists, archeologists and architects use this technology.

During the virtual reality tour, students saw several of the amazing applications that the VRAC is working on. Presenters fielded questions about the technology and about study and careers in this emerging field.

~ Dr. Terri McDonald, Instructional Technology Coordinator

### Meet Garth Cornish, Information Technology Specialist



**Title:** Information Technology Specialist  
**Education:** M.A. in Communications and Training Technologies, UNI 1999  
B.A. Russian/Russian East European Studies/Economics, UNI 1997  
**Wife:** Yana, UNI doctoral student in Curriculum and Instruction  
**Hobby:** Flying private planes and traveling

**Military:** 4 years active United States Marine Corp/6 years Iowa Army National Guard (Radio Technician, Cryptographic Custodial Officer)  
**Continuing Projects:** Guest lecturer on Educational Technologies at Herzen State Pedagogical University, St. Petersburg, Russia

# Introducing . . .

## Our Student Assistants in Instructional Technology

### Julian Bond, Graduate Assistant



Julian Bond received his B.A. from Florida Agricultural and Mechanical University. He is currently seeking an M.A. Degree in Education Technology and is serving as Terri McDonald's graduate assistant. Julian enjoys sports, music and technology. Julien is looking forward to what Iowa has to offer and all the opportunities to enhance his skills as an educator.

### Chris Sweet, Work Study Assistant



Chris Sweet has a Bachelor Degrees in computer Science with an emphasis on operating systems. He assists Garth Cornish with computer maintenance and inventory. Chris assists with instruction of the tae kwon do, and Judo through the UNI wellness program. He is getting married in July and plans to complete his degree in 2001. He also enjoys reading music and sports when he has free time.

### Stephanie Canadé, Work Study Assistant



Stephanie Canadé is working on her B.A. degree in Science Education with a minor in Educational Technology. She assists Garth Cornish with computer maintenance and inventory. She plans to graduate in 2001. Stephanie is working

with PLS teachers on the Toying with Techonology Outreach Progam. She is involved in several organizations around campus. She also enjoys outdoor recreational activities and traveling.

### Courtlandt Butts, Graduate Assistant



Courtlandt Butts is a graduate of Florida Agricultural and Mechanical University acquiring a B.S. degree in Elementary Education. He serves as Terri McDonald's graduate assistant. Currently, he is working on a M.A. degree from UNI.

Courtlandt enjoys all outdoor activities including biking, swimming, and camping—just to name a few. He also enjoys the fine arts such as music, theater and painting.

### Justin Stone, Department Assistant



Justin is working on his M.A. degree in Communication & Training Technology and plans to graduate this summer. He is the webmaster for PLS this semester. He received his under graduate degree in electronic media at UNI. Justin is getting married in July. He enjoys sports and plays guitar in his free time.

### Peter Behroozi, PLS Student Assistant



Peter Behroozi is a Price Laboratory sophomore and works in the instructional technology area two periods a day. He is interested in physics, math, chess, computers and programming in C++. In his spare time, he plays violin, ping-pong and soccer. He is currently employed as chief programmer at Curly Productions where they are making the already infamous game of "Kick the Skank."

### Tim Armstrong, Work Study Student



Tim Armstrong is originally from Minneapolis, MN. He assists Terri McDonald in the audio visual area. He recently moved to Iowa after his marriage in October 1999, and currently resides in Waverly. Tim graduated from the

University of Minnesota with a B.A. in Fine Art in 1996. He is now finishing a 2nd B.A. at UNI with a major in Spanish Education and will be student teaching this fall. Some of his hobbies include: gourmet cooking, playing fetch with his chocolate lab, riding his motorcycle, world travel, and playing the washboard in a rock-a-billy band. (Check it out at [www.accidentclearinghouse.com](http://www.accidentclearinghouse.com)).

### Sam Zollars, Work Study Student



Sam Zollars is working on his B.A. degree at UNI. He assists in the Audio Visual area at PLS. He plays the tuba in UNI's marching band and enjoys soccer, fencing and music.

## Great Web Sites

### Internet Search Tools

- Netscape's Search Page

URL: <http://home.netscape.com/escapes/search/>

- Classroom Connect's Search Page

URL: <http://www.classroom.net/classroom/search.html>

- WebSearches

URL: <http://www.webplaces.com>

### Search Engines

- HotBot

URL: <http://www.hotbot.com>

- Alta Vista

URL: <http://www.altavista.digital.com>

- WebCrawler

URL: <http://webcrawler.com>

- Open Text Index

URL: <http://index.opentext.com>

- Excite

URL: <http://www.excite.com>

- Lycos

URL: <http://www.lycos.com>

- AOL NetFind

URL: <http://www.gnn.com/search/>

- InfoSeek

URL: <http://www.infoseek.com>

### Meta Search Engines

- MetaCrawler

URL: <http://www.metacrawler.com>

- CInet's Search.com

URL: <http://search.com>





# ONGOING PTP FUND RAISERS

## ❖ TARGET GUEST CARD

The Target Guest Card works just like a credit card. Apply for a guest card at any Target store by either going to Target or calling 1(800) 316-6142. When you apply, be sure to designate Price Lab School as the school you want donations sent to. Then every time you shop at Target and use your card, Target will donate 1% of your purchases to Price Lab. Each month special promotions are run in which certain items purchased will earn even more for our school. Checks will be issued to the schools in November and March.

## ❖ HYVEE RECEIPTS

Save those pink/red receipts from HyVee. For every \$200.00 collected in receipts, our school receives \$1.00. We made over \$700.00 last year! Receipts can be put in the box labeled HyVee Receipts in the school lobby, or you may give them to your child's teacher. If you turn in a large amount of receipts at one time, please paper clip them together and write in the total amount. Ask others to save their HyVee receipts too so we can beat our total from last year.

## ❖ WWW.SCHOOLPOP.COM

This is an Internet-based fund raising opportunity where you go online to purchase items at various sites like Amazon, J.Crew, CD Now, and eToys. Up to 20% of the total purchase price will be credited to our school. Visit this web site for more detailed information.

## ❖ BOX TOPS FOR EDUCATION

General Mills will reimburse our school .10-.15 cents for each box top returned. You can put box tops in the box labeled HyVee Receipts in the lobby or give them to your child's teacher. Funds raised are put in the PTP account to be used for improving our school in various ways.

## ❖ INKJET CARTRIDGES

Return your empty inkjet cartridges from Hewlett Packard, Canon, Apple, and Lexmark to the PLS Communication Center in room 143 or your child's teacher. The inkjet cartridges will be returned to a collection company which will provide our school with a refund of \$1.00-\$3.00 for each cartridge. To date, we have received over \$600 in refunds.

Thank you for your continued support!  
Price Lab School PTP.

Many thanks to our PLS partners .....

THE BROWN BOTTLE

Ireland  
Technologies



Martin Bros.  
FINE FOODS AND PROVISIONS

## PTP Disbursements – 1999 - 2000

Paul Waack	P.E.	12 biking helmets @18.95	\$227.40
Aaron Spurr	Science	Sky Wizard Model 2	\$270.00
		Orion SkyQuest XT8 Installation Kit	\$190.00
Rick Vanderwall	Language Arts	TitleMaker 3000	\$600.00
Katheryn East	Support Serv. Coord.	Book sets: 5 @ 12.00, 5 @ 16.00, 5 @ 19.00	\$235.00
Jim Maltas	Mathematics	9 Calculator Based Rangers \$ 92.00	\$828.00
Treiber/Leonhart	5 <sup>th</sup> grade	4 Spelling Ace Thesaurus @ 24.95 + shipping	\$105.78
		2 Classroom Thesaurus @ 16.00	\$32.00
		Classroom Atlas Set	\$214.40
Michelle Swanson	Elem. Music	7 bass bars & 7 mallets	\$1697.93
Michelle Swanson	Music Dept.	Yamaha studio piano	\$3595.00
Leonard Upham			
Linda Sharp			
Michael Fanelli			
Lori Smith	P.E.	Fitnessgram Test	\$250.00
Linda Sharp	Secondary vocal music	Repair Kurzweil keyboard	\$625.00
Leonard Upham	Band	Rhythm Cards	\$234.52
		4 sets of music videos @134.18	\$536.72
Sheri Hoffman	N/K	Round Edge Storage Unit Bookshelf	\$251.90
		Economy Tabletop Bookstand	\$32.45
		Science Discovery Kits	\$60.50
		4 Big Book Science Packets @ 29.95	\$131.78
		Magnet Exploration kit	\$54.94
		Magnet Shapes	\$21.94
		Mailbox	\$20.05
		Solid hardwood trucks and airplane	\$126.37
		Puppet theater	\$69.00
		Dramatic play	\$82.50
		Granpa and Granma's dressup trunk	\$71.50
		Lego Wheels pack	\$34.10
		2 sets...Computers... Winnie the Pooh @ 19.95	\$46.90
		Help me dress froggy kit	\$27.44
		Alphabet Adventure Game	\$21.94
Darlene Cooney	N/K	Science Discovery chest	\$163.90
		Magnet Exploration kit	\$54.94
		Color paddles	\$15.95
		Root View Farm	\$29.64
		Shipping	\$26.43
Dorothea Olson	Nurse	Mouth model	\$57.00
		Giant toothbrush	\$12.90
Kim Miller	Elem. Resource	Quicktionary Reading Pen	\$296.90
Kathy Day-Bobb	4 <sup>th</sup> grade	Mini Mysteries	\$6.50
		Language Detective	\$17.95
		Mysteries of the New Millennium	\$10.95
		World Geography Mysteries	\$3.95
		20 Scholastic World Atlas @ 3.95	\$79.00
		Map Mysteries	\$10.95
		Decimal/Fraction Dominoes	\$19.98
		Problem Solving with Polyhedra Dice	\$19.98
		2 Math Chase – intermediate & primary @ 34.98	\$69.96
		Gems Activity Guide – In All Probability	\$14.98
		Magnetic Manipulatives:	
		Pentominoes	\$9.98
		Tangrams	\$9.98
		Money	\$19.98
		Laptop board 9x12	\$10.00
		Shipping	\$17.48

Denise Tallakson Mary Schneider Lynne Ensworth	Unit II	Lego Community People	\$32.50		
		Lego Community Vehicles	\$53.50		
		Fun with Lego Activity Table	\$139.00		
		Shipping	\$22.50		
		Desk size vertebral column	\$39.95		
		Giant Tooth brushing model	\$39.95		
		Whopper eye model	\$39.95		
		Giant Ear Model	\$49.95		
		Shipping	\$16.95		
		What's inside me apron	\$29.95		
		Hands on Food group Pyramid	\$49.95		
		Shipping	\$7.99		
		Becky Hawbaker	M.S. Resource	AlphaSmart	\$229
				Shipping	\$5.00
				Carrying case	\$25.00
Jacquelin Smith	3 <sup>rd</sup> grade	Soil/Bone Meal	\$25.00		
		3 boxes various bulbs	\$105.97		
		20 Blazing Meadow Star @ 2.50	\$50.00		
		20 Lupines @2.50	\$50.00		
		20 Little Blue Stem Grass @ 2.50	\$50.00		
		20 Big Blue Stem Grass @ 2.50	\$50.00		
		10 Stiff Golden Rod @ 2.50	\$25.00		
		20 Dense Blazing Star	\$50.00		
		Additional top soil	\$50.00		
		(All of the above are for the outdoor classroom/garden)			
		Jody Stone Karen Couch Breitbach Linda Graber Aaron Spurr Lyn Countryman	H.S. Science Dept.	Metric balance	\$245.00
Water distiller	\$1,791.00				
6 - TI83 Plus Graphing Calculators	\$558.00				
Autoclave	\$3,200.00				
1 CBL	\$179.00				
2 PH - Din	\$144.00				
1 HRM - Din (heart rate)	\$47.00				
2 CON - Din (conductivity)	\$158.00				
2 PS - Din (pressure sensor)	\$138.00				
1 BGP - Din (gas pressure)	\$68.00				
1 EKG - Din (sensor)	\$140.00				
1 COZ - Din (Gas sensor)	\$259.00				
1 EHR - Din (heart rate monitor)	\$89.00				
1 RMB (resp. mon. belt)	\$58.00				
1 RH - Din (relative humidity sensor)	\$65.00				
6 CBL - Din (Din sensors)	\$28.50				
1 COL - Din (colorimeter)	\$99.00				
shipping	\$11.04				
Nadene Davidson	Family Consumer Science			Amana microwave	\$175.00
				Microwave cart	\$109.88
Annette Swann	Elem. Art	6 hand staplers @ 6.00	\$36.00		
		6 table staplers @ 5.00	\$30.00		
		6 sets clay modeling tools @ 5.00	\$30.00		
		2 metal & press board 5 shelf units @ 50.00	\$100.00		
		Tile board ¼ inch (dry erase)	\$16.68		
		3 sheet Building board ½ inch (cellatex) @ 10.79	\$32.37		
		1 doz. Plastic storage containers for art supplies @ 4.99	\$59.88		
		1 doz. Dishpan size and bread loaf size with lid @ 5.99	\$71.88		
3 easels - Lite a Best Economy model @ 155.05	\$465.15				

The 1<sup>st</sup> Annual AFPLS/PTP Benefit Auction was a huge success. We raised \$21,455.00 in just a few hours. **Many thanks go to all of the parents, students, teachers, administrators, staff and people from the community who donated their time, auction items and/or money to help us be this successful. Another HUGE thank you to those who attended the auction, as well as those who bid on items!**

Teachers were asked to submit requests for items to enrich their curriculum, which are not covered in their regular operating budgets. This is the first time that we were able to fill ALL of the requests that were submitted. We will possibly be giving teachers another opportunity to submit further requests after the carnival this spring. At that time we will also fulfill our commitment to the NUHS Yearbook as well as Post-prom and the PTP senior scholarship. The 2<sup>nd</sup> Annual AFPLS/PTP Benefit Auction is already in the planning stages! To help, contact Julie Creeden or Jo Walters.

# P.R.O.U.D.



## People Respecting Our Unique Differences

*P.R.O.U.D. is a student organization at Malcolm Price Laboratory School that is open to any high school student committed to the ideals and mission of P.R.O.U.D.*

*... to meet the personal, social, and academic needs of its members while promoting cultural awareness and diversity issues relevant to all ethnic groups.*

This year, we have gotten off to a great start in P.R.O.U.D. We've been working to incorporate more community service and interactive discussions with other schools into our activities.

Our first major activity was "Follow the North Star," through the ICN. This involved several schools watching a small group of students as they experienced a scenario much like that of the slaves during the pre-civil war time. The setting was in Indiana, which was a "free" state. However, much illegal slave trade still existed. The participants were not actors and it was very interesting to see their reactions as they were treated like African slaves. The activity also included a question and answer session pertaining to events that had taken place during the activity.

We were able to hear how other schools interpreted the activity, as well as let them know how we felt. We found it to be a very valuable learning experience.

Following the "Follow the North Star" activity, we planned a trip to Chicago. Our objective was to be exposed to some of the different urban neighborhoods and to overcome the prejudices and stereotypes that we held prior to the trip.

We started off by driving to Chicago. Our chaperones were Mr. Barney, Mr. Dorris, Mr. Granger, Mrs. Kollasch, Mrs. Kroemer, and Mrs. Brumm. Upon arriving in Chicago, we went to the University of Chicago Lab School, where we learned about how the school compared to other schools as well as ours. We ate dinner at the school, and met

some of their students. Our original plan was to stay at the International Student Center. We soon found out that there are two very different interpretations of what a convention center was! Our chaperones decided that it would be in our best interest if we stayed at a hotel instead.

The next day after breakfast we broke into two groups; one that visited an African American neighborhood called "Bronzeville," while the other group visited a predominantly Southeastern Asian neighborhood. The groups toured the neighborhoods and found out several interesting facts about the history of the neighborhoods, the status of the people in the neighborhoods, and how the neighborhoods are functioning today. Each of the groups dined

in an ethnic restaurant, and then met at a museum in a Latino neighborhood that featured a "Day of the Dead" exhibit. After a tour of the Latino neighborhood and museum we headed home. Our next meeting back at school was spent discussing what we gained from our experience.

We took part in another ICN project in which we discussed our school's diversity and how we address it in comparison to other schools in Iowa. We were able to question a student and faculty

panel about issues relating to diversity.

Our latest project involved a money drive for the Salvation Army during the holidays. P.R.O.U.D. members teamed up to ring the bell and to receive free will donations from our students and faculty during our lunch hour. This week-long project combined with a P. E. fund drive on the last day of school resulted in close to \$300.00. The fund drive on the last day of school before winter break also involved

receiving toys for "Toys for Tots", food for the Cedar Valley Food Bank, and money for the Salvation Army. We thank everybody for helping us during the holiday season.

As you can see, we've been very busy however, with the onset of the second semester, there is only more to come!

*Sponsor: Willie Barney  
President: Salina McCarty*

\*\*\*\*\*

## Upcoming Events

- P.R.O.U.D. is offering tutoring on an ongoing basis for Price Lab students.
- January 27 P.R.O.U.D. presented an NK-12 assembly honoring the Rev. M.L.K. Jr. and kick off of Black History Month. Dr. Blackwell from U.N.I. was the keynote speaker.
- February 12 P.R.O.U.D. will be sponsoring a middle school Valentine's Day Dance.
- February 24 P.R.O.U.D. will be attending the "Young Blacks On the Move" program to uplift, educate and encourage it's members.

## PLS/NUHS PTP MEETING MINUTES - JANUARY 4, 2000

President, Julie Creeden, called the meeting to order at 6:00 P.M. in the library.

Minutes of the December Meeting: The December meeting minutes were approved, as written.

Correspondence: No correspondence received since the last meeting.

Treasurer's Report: Treasurer Amy Bower reported the balance in the checking account, currently \$24,816.29. The charge for using the UNI Wellness Center before Winter Break still needs to be paid.

PLS Family Directory: Gloria Hooks was unable to attend the meeting to update on progress that has been made. (01-13-00 A draft of the directory is being approved, and expected to go to the printer by the end of January.)

Disbursement of PTP Funds: After going through a lot of University "red tape," the items have been ordered. When the merchandise is received, teachers need to turn invoices into Julie.

Mrs. Smith's 3rd Grade Bakery had an interest in funding playground equipment, so funds were transferred so that the equipment will come out of the Bakery account, rather than PTP for those items. The teacher associates have purchased board games for indoor recess time.

Internet shopping opportunities: Our school is already signed up for the fundraising site, "www.schoolpop.com." Julie is working on getting our school signed up on the fundraising site, "yourschoolshop.com." Amy Bower will work on an insert to go in each newsletter, explaining all current fundraising opportunities, and how everyone can participate.

Activity Day at WRC: Wendell reported that he received many positive responses on the December 21, 1999 Activity Day that was held at the WRC.

Carnival: Brenda Kirkpatrick reported that the first planning meeting for the carnival will be held on Thursday, January 13, from 6-7:00 P.M. There will be follow-up meetings, and many opportunities to get involved with planning and/or working at the carnival this year. An announcement will be put in the February newsletter regarding the next meeting date.

Enrollment Caps and Searches: Wendell briefly discussed these items with the group. This information will also be presented and discussed at the PAC meeting, following PTP.

The next meeting will be held on Tuesday, February 1, 2000, at 6:00 P.M. with the PAC meeting following at 7:00 P.M.

There being no other business, the meeting was adjourned at 6:55 P.M.

## PLS/NUHS PTP MEETING MINUTES - DECEMBER 7, 1999

President, Julie Creeden, called the meeting to order at 6:00 P.M. in the library.

Minutes of the November Meeting: The November meeting minutes, which were distributed in the December/January newsletter, were approved, as written.

Fitness Fridays: Lori Smith, P.E. Instructor, explained a new program to the group that she has introduced. Each Friday, PLS faculty, staff and parents are invited to join the Elementary P.E. classes in a variety of fitness activities. The program is running from 9:30-11:30 and 12:30-3:00 every Friday, in the gym (Nielsen Field House, on the NW side of the school). Coach Smith reports that the children love to see their teachers and other staff around the building, as well as family members, working out with them. There is an opening activity, then participants are on their own to go to stations set up, and work at their own pace. Everyone is encouraged to attend, to watch or work out.

Correspondence: Julie shared a thank-you note received by PTP, from the Middle School Senate. The note thanked everyone involved for all their work with the auction, and caring about our school.

Treasurer's Report: Amy Bower, treasurer, reported that the balance in the checking account is currently \$5,236.29. The auction proceeds have not been transferred from the AFPLS account into the PTP account, but Amy is working with Dennis Reimer, treasurer of AFPLS, to get that done.

Directory: Gloria Hooks updated the group on her progress with the directory. She has received a print-out of names and other information to include, from Karen Williams in the office. Don Findlay will work with the office, to get this information onto a disk so Gloria can arrange the data at home, into the directory format. Gloria plans to include lists of student council members, PAC members, PLS Administrator numbers, and room parents. It was suggested that with the list of PAC members there be a statement about PAC, encouraging parents to contact a member(s) with their concerns.

Disbursement of PTP funds: The committee to disburse PTP funds met at 5:00, before the PTP meeting. All items submitted were discussed, and a decision was reached to fund each request. A request for \$1,200 in playground equipment had previously been approved, which brought the total of items funded by PTP to over \$22,000.

Banquet: A total amount of \$21,455 was raised at the banquet. It was felt that there should be some follow-up, in the form of an Open House, to show parents and other contributors where their donations went to help the school. The tentative plan would be to identify those items funded by the auction proceeds with a bright sticker, so that the people attending the Open House could see the items. Those involved with the banquet will meet at 8:00 tonight, after the PAC meeting.

American Education Week: Bagels and other treats were provided to faculty and staff during AEW. There was quite a bit of interest in the trivia contest which took place throughout the week. The winner was Karen Couch, who was awarded a basket of \$100,000.00 candy bars.

Special Activity: Mr. Krumbholz explained a special activity day to the group. On Tuesday, December 21, the Middle School and High School students will take turns traveling to the Wellness Recreation Center on the UNI campus for activities, while the Elementary students take part in special activities in the gym and swimming pool at PLS. PTP voted to fund a fee of \$415 to pay for expenses associated with this event. Students will be asked to bring a donation to the food bank.

Computers: Mr. Krumbholz asked the group for their ideas on having a Laptop computer checkout, versus having the computer labs at school open during the evening. The group decided that opening up the computer lab would benefit more students, and be a practical use of our resources.

Carnival: The Carnival will take place Friday, May 12th. The theme will remain similar to last year. Amy Bower and Brenda Kirkpatrick will meet shortly after the winter break to make some preliminary plans.

Internet Shopping Opportunities: Julie has received information on "schoolpop.com" and "yourschool.com." It looks like a donation (varying from company to company) will be made to our school for each purchase through these websites. Steve Norby, parent, will do some checking on these fundraising opportunities and report back to the group. There is also an opportunity (similar to the Target charge card) with a Kwik Star card, where the company will donate a percentage of your purchase to your designated school.

There being no other business, the meeting was adjourned at 6:55 P.M. The next meeting will be held on Tuesday, January 4th, 2000, in the Library.



**NORTHERN UNIVERSITY HIGH SCHOOL  
SPRING SPORTS PROGRAM**

----- 1999 - 2000 -----

**GIRLS TRACK**

Mar 22/23	Dickinson	Dome	
Apr 4	Jesup Inv	Jesup	5:00
7	Eldora-NP	Eldora	4:30
13	DNH Inv	Dike	5:00
14	West (JV/V)	Central	5:00
20	N Fayette	W Union	4:00
24	Ack/Gen Inv	Ia Falls	5:00
25	Metro	Central	5:00
28	NU Inv	CFHS	5:00
May 1	NICL	CFHS	4:00
4	Apl/P-Burg	P-Burg	5:00
9	Districts		
19/20	State	Des Moines	

**BOYS TRACK**

Mar 25	Dickinson Relays	Dome	
Apr 3	Columbus Inv	Central	5:00
4	Union Tria	LPC	5:00
10	Jesup Inv	Jesup	5:00
11	Wahawk Inv	Central	5:00
18	DNH	Dike	5:00
20	Cole Collinge	CFHS	5:00
25	Grundy Center	GC	5:00
27	Vinton	Vinton	5:00
28/29	Drake	DM	
May 1	NICL	CFHS	5:00
4	Aldrich Relays	CFHS	5:00
9			
13	Districts	Dike	9:00a
26/27	State		

**GIRLS TENNIS**

Apr 6	Eldora-NP	Eldora	4:15
10	G. Center	Grundy	4:15
13	Wav.S Rock	Home	4:00
14	Hub/Rad	Home	4:30
18	Union	Home	4:00
24	Hudson	Hudson	4:00
27	Union	LPC	4:00
May 2	Eldora/NP	Home	4:15
5	DNH	Home	4:00
8	Apl/P-Burg	Apl	4:15
9	Ack/Geneva	Ackley	4:15
15	NICL	Byrnes	9:00a
18	District (Ind)		
20	District (Team)		
22-24	District (Team)		
Jun 1-3	State		

**BOYS TENNIS**

Apr 6	Eldora-Np	Home	4:15
10	G Center	Home	4:15
11	Apl/P-Burg	Home	4:15
13	Wav/S Rock	Wav	4:00
18	Union	LPC	4:00
20	Independence	Home	4:00
24	Hudson	Home	4:00
27	Union	Home	4:00
29	Eldora/NP Tour	Eldora	9:00am
May 2	Eldora/NP	Eldora	4:15
5	Dike-NH	Dike	4:00
12	Districts	TBA	
16	NICL	Byrnes	9:00am
20	Sub-State		
26/27	State		

**GOLF**

APR 11	AP/AGSWR/NU	Home	4:15
14	Jesup/DNH/NU	Jesup	4:00
17	GC/NU/Hud	So Hills	4:00
24	Apl/P-Burg Inv	Apl	4:30
27	Glad/Rein	Home	4:00
28	Denver	Denver	4:00
29	Grundy C Inv	Grundy C	8:00a
May 1	BCL-UW	Union	4:30
2	Union\Columbus	LPC	4:00
4	DNH	Home	4:00
5	Wapsie Valley	Home	4:00
8	NICL	Jesup	1:30
12	Sectionals	TBA	
19	Districts	Home	
26/27	State		

**BOYS SOCCER**

Mar 31	Denver	Home	4:30
Apr 6	Wav/SR	Wav	4:15
14	Benton Comm	Home	4:15
20	East Watl	Wloo	4:15
24	Glad/Rein	Home	4:15
25	CR Jefferson	Home	4:15
27	Columbus	Col	4:15
May 2	Decorah	Home	4:15
4	Denver	Denver	4:30
6	Wav/SR	Wav	9:00am
8	Columbus	Home	4:15
12	Glad/Rein	Rein	4:15
18	Benton Comm	Van Horne	4:15
20	Districts		

**GIRLS SOCCER**

May 8	Denver	Denver	4:30
11	Hudson	Home	4:15
15	Benton Comm	Home	4:15
22	Hudson	Hudson	4:15
25	Reinbeck	Home	4:15
30	Solon	Solon	4:15
June 1	East Watl	Wloo	4:15
2	Reinbeck	Reinbeck	5:00
5	Denver	Home	4:30
7	Benton Com	Van Horne	4:15
8	Columbus	Home	4:15
10	Wav Sr Tour	Wav	9:00a
12	Wav-Sr	Home	5:00
16	Regionals	TBA	

**MIDDLE SCHOOL TRACK**

Apr 11	DNH (B&G)	NH	4:15
17	NU/GC/Denver	G-Den	4:15
		B-GC	4:15
25	Glad/Rein (B&G)	Gladbrk	4:15
May 1	Apl/P-Burg (Girls)	P-Burg	4:15
2	Apl/P-Burg (Boys)	P-Burg	4:15
5	GC(Comb 7/8 Gr)	GC	4:30
11	NICL	B-Glad	4:15
		G-Hudson	4:15

# February 2000

## Malcolm Price Laboratory School Calendar

SUNDAY	MONDAY	TUESDAY	WEDNESDAY	THURSDAY	FRIDAY	SATURDAY
		<b>1</b> 4:00p MSBB vs Denver (G-NU,B-Den) 6:00p PTP MTG in Library 6:30p BB vs Dike-New Hartford 7:00p PAC Mtg in Library	<b>2</b> GTR Practice Begins	<b>3</b> 7:00a Jazz Bd/Ch Orch Reh 7:00a -7:50 Math Counts Rm 152 3:10p -4PM Math Counts Rm 152 6:30p FSBB vs Union (G-Dysart,B-NU)	<b>4</b> 6:30p BB vs Aplington-Parkersburg	<b>5</b> <i>State Lg Gr Speech Contest</i> 5:30p BB vs North Tama (2 Girls)
<b>6</b> U of IA Honor Choir @ Iowa City Luther Dorian Orch Fest @ Decorah	<b>7</b> <i>U of IA Honor Choir @ Iowa City Luther Dorian Orch Fest @ Decorah 6:00p -8:00 ACT Prep Seminar in Room 233 6:30p FSBB vs DNH (G-NU,B-Dike)</i>	<b>8</b> 4:00p MSBB vs Hudson (G-NU,B-Hud) 6:30p BB @ LaPorte City	<b>9</b> Cedar Valley MS/JH Band Fest @ NU	<b>10</b> <i>7:00a Jazz Bd/Ch Orch Reh 7:00a -7:50 Math Counts Rm 152 3:10p -4PM Math Counts Rm 152 4:00p -10 UNI Northern Band Fest @ UNI Russell Hall 6:30p FSBB vs A-P (G-P-Burg, B-NU) 7:30p MS Band/Ch/Orch Concert</i>	<b>11</b> UNI Northern Band Fest @ UNI Russell 6:30p BB vs Jesup	<b>12</b> BSW Districts LINCOLN'S BIRTHDAY Piano Contest 8:00a -4 UNI Northern Band Fest @UNI
<b>13</b>	<b>14</b> BTR Practice Begins VALENTINE'S DAY 8:00p NU Singers Reh	<b>15</b> 6:30p BB @ Garwin (2 Boys)	<b>16</b> 11:51a Early Dismissal 7:00p GBB Districts vs Denver @Home	<b>17</b> <i>7:00a Jazz Bd/Ch Orch Reh 7:00a -7:50 Math Counts Rm 152 3:10p -4PM Math Counts Rm 152 7:00p -8:00 7th Gr Parent Mtg-Faculty Lounge 7:30p HS Choral/Orchestra Concert</i>	<b>18</b>	<b>19</b> BSW State U of IA Band Fest @ Iowa City <i>All-State Speech Lg Contest @ Des Moines</i> 7:00p GBB Districts TBA
<b>20</b> U of IA Band Fest @ Iowa City	<b>21</b> PRESIDENT'S DAY 7:00p BBB Districts vs Don Bosco 8:00p NU Singers Reh	<b>22</b> GBB Regionals	<b>23</b> 7:00p BBB Dists vs winner of DNH-Hudson Game	<b>24</b> 7:00a Jazz Bd/Ch Orch Reh 7:00a -7:50 Math Counts Rm 152 3:10p -4PM Math Counts Rm 152	<b>25</b> GBB Regionals	<b>26</b> GBB Regionals <i>District Individual Speech Contest</i> 3:00p Return Home from Music Trip to Chicago
<b>27</b> UNI Northern Vocal Arts Fest @ UNI Luther Dorian Band Fest @ Decorah Close Up	<b>28</b> UNI Northern Vocal Arts Fest @ UNI Luther Dorian Band Fest @ Decorah Close Up	<b>29</b> BBB Districts @ Cedar Falls High School Close Up				

# PLS Geography Bee 2000

## Atulya Iyengar advances to state level



(l-r): PLS Geography Bee winner Atulya Iyengar, runner-up Rhiannon Talbot, and retired social studies secretary Lilian Marks in the ICN room.

For the twelfth year, Malcolm Price Laboratory School sponsored a geography bee for students in the 4th through 8th grades. The local school bee was held on closed circuit television in the PLS ICN Room on Tuesday, December 7, from 1:00-3:00 p.m.

### The qualifying students for each grade were:

#### 8th Grade:

Nathan Hanson, Katy Huber, Manolo Perez, Alden Turner

#### 7th Grade:

Jen Bertram, Katie Hoodjer, Nora Kischer-Browne, Cyrus Moussavi

#### 6th Grade:

Joel Brumm, Marshall Hilgemann, Atulya Iyengar, Laurie Reimer

#### 5th Grade:

Shaheed Al-Mabuk, Dylan Klenske, Drew Stonewall, Rhiannon Talbot

#### 4th Grade:

Andrew Boody, Tommy Woods, Stephanie Rapp, Carson Turner

The winner of the Malcolm Price Laboratory School Bee, Atulya Iyengar, will advance to the state level of competition, by taking a written examination. Written examinations will be evaluated by the National Geographic Society. The 100 highest scoring students will participate in a state bee to be held on April 7, 2000. State winners will then travel to Washington, D.C. for the National Bee. First prize is a \$25,000 college scholarship.

Runner-up, Rhiannon Talbot, will qualify for the State Geography Bee in the event Atulya Iyengar is unable to attend.

— Paul Horton,  
Social Studies Instructor

DESTINATION:

# PARIS



On Thursday, March 9, seven juniors and two seniors will be leaving Iowa to take part in Northern University High School's annual family stay program in Paris, France. Kyra Kischer-Browne, Travis Coulter, Erin Goecke, Amanda Miller, Theresa Price, Kristy Reimer, Andrew Sawyer, Steve Shelton and Emily Traw, will be accompanied by their chaperone, Mr. Lowell Hoeft.

Students will be met by their host families at Charles de Gaulle Airport, located in a northeast suburb of Paris. In addition to living with a French family for two weeks, all students will attend Martin Luther King High School in a suburb called Bussy Saint Georges. There, they will have the opportunity to experience the class schedule of their host brother or sister. During the family stay, visits will be made to the center of Paris to view the many monuments for which the city is famous: the Eiffel Tower, the Arch of Triumph, Notre-Dame Cathedral and Versailles Palace.

On three separate day trips, the group will travel by train to observe life outside the Paris metropolitan area. One of the trips will be to Geneva, Switzerland, a French-speaking city directly across the French border in the Alps mountain region. Lyon, the second largest city in France and home of the country's silk industry, will be the destination of a second journey. A third excursion will find students visiting a castle in the city of Nantes, on the Loire River, continuing on to La Baule, a resort town on the Atlantic ocean.

On Thursday, March 23, participants will make the return trip to Waterloo, via Chicago, where their families will pick them up.

— Lowell Hoeft, Modern  
Languages Department Chair

# MUSIC EVENTS

## HONOR CHOIRS

Several NUHS vocal music students have been named to area honor choirs. Ashley Atherton, Lacey Brakebill, Zach Burk, and Laura Wellnits recently participated in the future Dorian Honor Choir, the largest select honor choir in the United States. Over 1400 students were in the clinic sessions and performed a concert under conductor Weston Noble.

Ian Carvley, Carlin Dorris, Chistopher Hardy, Katy Lyman, Tal Jones, and Anne Thompson were selected to the University of Iowa Honor Choir February 6-7. A festival concert in Hancher Auditorium caps this annual event which includes performances by the Old Gold Singers and Kantorei, the University of Iowa Chamber Choir.

Students chosen to participate in UNI's annual Vocal Art Festival to be held February 26-27 are: Jenna Davis, Aubrey Huber, Tal Jones, Katie Judas, Amy McGuire, Rochelle Nesbit, Nathaniel Ohrt, Brian Oleson, Brian Perry, Steve Shelton, and Mary Weber. This event includes a solo piano/ vocal competition. Congratulations to these students for achieving this honor.

## SINGING VALENTINES

The NUHS Choir will be selling Singing Valentines beginning February 1 at home athletic events and at school. The valentines can be delivered by phone, \$2 for a local call, \$5 for a long distance call, or the deluxe package is a personal delivery by a mixed ensemble complete with flowers and a card for \$25. Delivery will be the weekend of February 12 & 13 with limited delivery on Valentine's Day. Contact a choir member for further information or call 273-6236. There are several styles to choose from, ranging from greetings appropriate for grandparents, kids away at college, parents, co-workers, and of course a special and significant other.

## ORCHESTRA/CHOIR CONCERT

The NUHS Orchestra and Choir will present a concert on Thursday, February 17 at 7:30 p.m. in Butzier Auditorium. The concert will feature several lighter selections by both groups, including music from the musical "Rent," as well as music from the January 24 NICL Conference Choral Festival. There is no admission charge.

— *Dr. Linda Sharp, Music*

## PERFORMANCE DATES FOR BAND STUDENTS

Following are the dates for all performances by band students at Price Lab School for the second semester. Groups involved are in parentheses following each date.

Tuesday, February 1, 7 p.m. (HS Pep Band)

Friday, February 4, 7 p.m. (HS Pep Band)

Wednesday, February 9, daytime (7/8 Grade Band)

Thursday, February 10, 7:30 p.m. (6/7/8 Grade Bands)

Friday, February 11, 7 p.m. (HS Pep Band)

Sunday, April 2, 2 p.m. (HS Band Students - Dessert Concert)

Saturday, April 8, all day (selected HS Band Students - solo/small ensemble State contest festival)

Monday, April 17, 7:30 p.m. (All band students, Grades 5 through 12)

Friday, May 5, evening (HS Band Students - State Large Group Contest Festival)

Tuesday, May 23, 7:30 p.m. (Band students, grades 7 through 12)

## SECOND ANNUAL CEDAR VALLEY MS/JH BAND FESTIVAL AT NUMS

On Wednesday, February 9, Northern University Middle School will host the second annual Cedar Valley Middle School/Junior High Band Festival during the day. Schools involved this year include NUMS, Peet and Holmes Junior Highs from Cedar Falls, and Hoover Intermediate School from Waterloo. The bands will perform selections for two adjudicators who will provide both written and verbal comments after the performances. Students will be able to listen to other groups as well as their own performances. The intent of the festival is to provide both teachers and students with an evaluation by an outside authority in the field of instrumental music performance. Performances are open to the public free of charge. The time for the NUMS 7/8 grade band performance will be sent home with the students around February 1 when the festival schedule is set.

## NUMS CONCERT FEBRUARY 10

All middle school music groups will perform in a concert on Thursday, February 10, beginning at 7:30 p.m. in Butzier Auditorium. Included in the concert will be the 6th grade chorus, band, and orchestra as well as the 7th/8th grade chorus, band, and orchestra. Plan now to attend. Free admission. There is a handicapped accessible entrance on the north side of the Price Laboratory School near the band room.

— *Dr. Leonard Upham, Music Department Chair*

## Trip to the UNI Wellness Center — a “Holiday Present”



PLS students preparing to board bus for the UNI Wellness Center for a full day of physical fitness activities and fun.

On December 21 grades 6-12 received an early holiday present. Instead of a normal day of classes, students got to go to the Wellness Center on UNI's campus. The event was funded by PTP. Some of the activities students participated in were: rock climbing, swimming, raquetball, basketball, and other inside sports and games. Students benefitted from the use of the facility, the fun break from school, and also from being able to see and talk to friends and classmates who we don't get to see as much in a regular school day. I'm sure most students would agree that it was a great holiday present to start our break off.

— Jenny Fish, Grade 12

For their contribution toward the trip to the wellness center, PLS students donated the following items for distribution to the Cedar Valley Food Bank, Toys for Tots and the Salvation Army.

- 13 Boxes of food items
- 3 Boxes of toys
- \$263.71 Cash

We would like to thank the PTP for giving the students, faculty and staff the opportunity to spend some time together in a different setting. Thank You,

— Neil Phipps, Student Coordinator

### Lost Towels

The Wellness/Physical Education department needs your help. Over fifteen dozen towels have been taken/lost since the beginning of the school year. If any of the school's towels have found their way to your home, please return them.

## SCIENCE DEPARTMENT TELESCOPES FOR CHECKOUT

The Science Department at Price Lab School recently received a grant from the Iowa Science Foundation to purchase four 8-inch Dobsonian telescopes. These telescopes can be checked out by PLS faculty and students. Faculty can check out a telescope after completing a brief orientation, and students will receive an orientation to the use of the telescope in Aaron Spurr's Earth Science class during their astronomy unit this spring.

Additional funding has been received from the Alumni and Friends of PLS to purchase a computerized pointing system for one of the telescopes. This system would tell the user which way to point the telescope to find an object entered into the control pad. It is designed to make it easier to locate dim and otherwise hard-to-find objects in the night sky.

The normal checkout period is one week. If you have any questions, please contact Aaron Spurr at 273-7897 or aaron.spurr@uni.edu.

— Aaron Spurr,  
Science Instructor

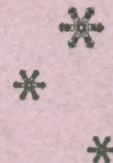
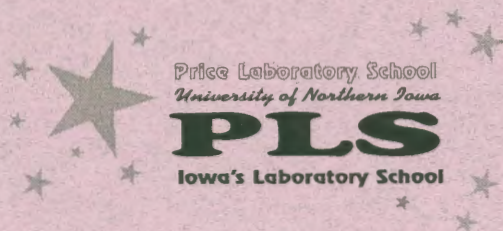
Dear Parents & PLS Friends,

We, the Unit II students have been studying wellness. We have a few health tips we would like to share.

1. Don't take drugs or smoke!
2. Exercise everyday!
3. Eat healthy foods!
4. Wash your hands often!
5. Limit your sweets!
6. Take a bath every day!
7. When it's cold, wear a jacket!
8. Brush your teeth twice a day!
9. Go to the dentist every 6 months.
10. Get plenty of rest!

Stay healthy!  
The Unit II classes

**Price Laboratory School**  
 19th and Campus Street  
 University of Northern Iowa  
 Cedar Falls, Iowa 50613



## Guidance—Important Dates...

### ACT TEST DATES

February 12, 2000  
 April 1, 2000  
 June 10, 2000

### SAT TEST DATES

April 8, 2000  
 May 6, 2000  
 June 3, 2000

### SCHOLARSHIPS

<i>Due in February and March</i>	<i>Deadline</i>
Iowa Farm Bureau Federation Scholarship	March 1
Sturgis Falls Scholarship	February 11
American Legion National Oratorical Contest	March 10
Easley- National Academy of American Scholar	February 15
Hugh F. Seabury- UNI	March 3
UNI Teacher Education Scholarship	February 1
UNI College of Humanities and Fine Arts	February 11
Robert C. Byrd	February 1
2000 Foster Child Grant	March 1
Kenneth G. Meyerhoff Memorial Scholarship	March 5
UNI Mildred Stever Scholarship	March 1
Herbert Hoover Scholarship	March 31
Iowa Federation of Labor- AFL-CIO	March 27
Iowa Credit Union League	February 4
- Family Involvement Board	
ACACIA Leadership Scholarship	March 15
Waterloo/Cedar Falls Graphic Communication Scholarship	March 15
CDA- Catholic Daughters of America	March 10
UNI- CBA Freshman Scholarship	February 4
Mother Moon Scholarship	March 10
Florence Warnock Scholarship	March 10
VEISHEA Leadership Scholarship	February 7
National Wild Turkey Federation Scholarship	February 1

— Jim Stichter, Guidance Counselor

## The Gateway to Educational Materials (GEM) <http://www.thegateway.org>

Announced on December 9, by US Secretary of Education Richard W. Riley, the newly redesigned GEM site (original reviewed in the June 12, 1998 \_Scout Report\_) is still a one-stop resource for K-12 educational materials. At the site, teachers, parents, and students can search for lessons, instruction units, and other resources by topic and grade level from over 140 websites. Users can also browse the more than 7,000 items by subject and keyword. Annotated entries in the database include a link to the resource, an indication of grade level(s), and a link to the full description, which offers GEM subjects, audience, resource type, format, publisher, and rights management information. Additional features at the site include a list of Hot Topics Pages and a new resources listing.

**PLS Newsletter - February 2000**

**Published by**  
**PLS Communication Center**  
**Editor: Lynn Dykstra**  
**Production:**  
**Sharlene Morgan, Bev Schomaker,**  
**Sue Watkins**

143 Price Laboratory School  
 University of Northern Iowa  
 Cedar Falls, Iowa