

Systematic Identification and Evolutionary Analysis of Catalytically Versatile Cytochrome P450 Monooxygenase Families Enriched in Model Basidiomycete Fungi

Khajamohiddin Syed^{1*}, Karabo Shale¹, Nataraj Sekhar Pagadala², Jack Tuszynski³

¹ Department of Life Sciences, Faculty of Health and Environmental Sciences, Central University of Technology, Bloemfontein, Free State, South Africa, ² Department of Chemical Engineering, University of Alberta, Edmonton, Alberta, Canada, ³ Department of Physics, University of Alberta, Edmonton, Alberta, Canada

Abstract

Genome sequencing of basidiomycetes, a group of fungi capable of degrading/mineralizing plant material, revealed the presence of numerous cytochrome P450 monooxygenases (P450s) in their genomes, with some exceptions. Considering the large repertoire of P450s found in fungi, it is difficult to identify P450s that play an important role in fungal metabolism and the adaptation of fungi to diverse ecological niches. In this study, we followed Sir Charles Darwin's theory of natural selection to identify such P450s in model basidiomycete fungi showing a preference for different types of plant components degradation. Any P450 family comprising a large number of member P450s compared to other P450 families indicates its natural selection over other P450 families by its important role in fungal physiology. Genome-wide comparative P450 analysis in the basidiomycete species, *Phanerochaete chrysosporium*, *Phanerochaete carnososa*, *Agaricus bisporus*, *Postia placenta*, *Ganoderma* sp. and *Serpula lacrymans*, revealed enrichment of 11 P450 families (out of 68 P450 families), CYP63, CYP512, CYP5035, CYP5037, CYP5136, CYP5141, CYP5144, CYP5146, CYP5150, CYP5348 and CYP5359. Phylogenetic analysis of the P450 family showed species-specific alignment of P450s across the P450 families with the exception of P450s of *Phanerochaete chrysosporium* and *Phanerochaete carnososa*, suggesting paralogous evolution of P450s in model basidiomycetes. P450 gene-structure analysis revealed high conservation in the size of exons and the location of introns. P450s with the same gene structure were found tandemly arranged in the genomes of selected fungi. This clearly suggests that extensive gene duplications, particularly tandem gene duplications, led to the enrichment of selective P450 families in basidiomycetes. Functional analysis and gene expression profiling data suggest that members of the P450 families are catalytically versatile and possibly involved in fungal colonization of plant material. To our knowledge, this is the first report on the identification and comparative-evolutionary analysis of P450 families enriched in model basidiomycetes.

Citation: Syed K, Shale K, Pagadala NS, Tuszynski J (2014) Systematic Identification and Evolutionary Analysis of Catalytically Versatile Cytochrome P450 Monooxygenase Families Enriched in Model Basidiomycete Fungi. PLoS ONE 9(1): e86683. doi:10.1371/journal.pone.0086683

Editor: Jae-Hyuk Yu, University of Wisconsin - Madison, United States of America

Received: October 28, 2013; **Accepted:** December 13, 2013; **Published:** January 22, 2014

Copyright: © 2014 Syed et al. This is an open-access article distributed under the terms of the Creative Commons Attribution License, which permits unrestricted use, distribution, and reproduction in any medium, provided the original author and source are credited.

Funding: Syed thanks the Central University of Technology (CUT) for a grant from the University Research and Innovation fund. Shale thanks the Medical Research Council (MRC) of South Africa. Pagadala and Tuszynski are thankful to Natural Sciences and Engineering Research Council of Canada (NSERC) for providing research support. The funders had no role in study design, data collection and analysis, decision to publish, or preparation of the manuscript.

Competing Interests: The authors have declared that no competing interests exist.

* E-mail: khajamohiddinsyed@gmail.com

Introduction

Plant biomass is the most abundant source of photosynthetically fixed carbon on land and a renewable source for the sustainable production of biofuels, chemicals and materials [1]. It is composed of cellulose, hemicellulose and lignin. The main barrier in the utilization of cellulosic material is lignin, the most recalcitrant aromatic macromolecule [2] that protects cellulose and hemicellulose. In their natural environment fungi, lower eukaryotic organisms, developed an extraordinary ability to degrade and mineralize lignin. Among fungi, particularly white-rot basidiomycetes are the only fungi capable of complete mineralization of lignin [3]. Because of this enormous importance of basidiomycetes in carbon recycling, there has been an explosion in fungal genome sequencing projects undertaken in recent years.

The recent explosion of fungal genome sequencing projects, particularly regarding basidiomycete genomes, has revealed the presence of a large number of cytochrome P450 monooxygenases (P450s) in their genomes, with some exceptions [4–12]. P450s are

heme-thiolate proteins ubiquitously distributed across the biological kingdom [13]. These enzymes perform a wide variety of reactions in stereo- and regio-selective manner [14] and their properties have been investigated for various pharmaceutical, biotechnological and environmental applications [15–18].

Genome sequencing of *Phanerochaete chrysosporium* [4], the first basidiomycete to be sequenced, revealed the presence of a large number of P450 genes (149 P450s and 10 pseudo-P450s) in its genome [4,19]. Subsequent genome sequencing of different basidiomycete species exhibited the same phenomenon and showed a large contingent of P450s in their genomes. Brown rot basidiomycetes, *Postia placenta* [5,20] and *Serpula lacrymans* [6] respectively had 190 and 164 P450s in their genomes. Genome sequencing of basidiomycete species [8] comprising six white-rots and five brown-rots revealed the presence of a large number of P450s, ranging from 126 to 249 P450s, in their genomes. The soft wood degrading white-rot basidiomycete *Phanerochaete carnososa* had 256 P450s in its genome, the largest P450 contingent among sequenced and annotated basidiomycetes [10]. *Ceriporiopsis sub-*

Table 1. Typical characteristics of selected model basidiomycetes representative of preferring different plant material/ components degradation.

Name of the basidiomycete	Type of fungi	Well-known for	Substrate preference	Preference of degradation of plant component	P450 count	References
<i>Phanerochaete chrysosporium</i>	White rot	Model fungus for understanding the mechanism of wood degradation	Hardwood	Efficiently degrades all plant cell wall components (lignin, cellulose and hemicellulose)	149	4, 19, 41
<i>Phanerochaete carnosa</i> HHB-10118-Sp.	White rot	Model fungus for understanding the mechanism of softwood degradation	Softwood (coniferous wood)	Efficiently degrades all plant cell wall components (lignin, cellulose and hemicellulose)	266	10
<i>Agaricus bisporus</i> var <i>bisporus</i> (H97)	–	Model fungus for understanding the adaptation, persistence, and growth in the humic-rich leaf litter environment. Premier cultivated button mushroom.	Leaf and litter	Non-wood secondary decomposer, leaf and needle litter degrader	109	21, 44
<i>Ganoderma</i> sp. 10597 SS1 v1. 0/ <i>Ganoderma lucidum</i> strain 260125-1	White rot	Shelf mushrooms or bracket fungi/model fungus for study of the biosynthesis of natural medicines	Softwood and hardwood	Capable of removing plant cell wall components, either lignin only (selective delignification) or both lignin and cellulose	209/198	9, 11,12
<i>Postia placenta</i> MAD 698-R	Brown rot	Model brown rot fungus used for study of wood degradation	Hardwood	Primarily degrades plant cell wall component cellulose and hemicellulose	190	5, 20
<i>Serpula lacrymans</i> S7.3	Brown rot (dry rot)	Model system to study evolutionary processes and life history traits in basidiomycetes. Well known as dry rot, destroyer of indoor wood construction,	Dry hardwood	Primarily degrades plant cell wall component cellulose and hemicellulose	164	6, 44
Out-group fungi (non-wood-degraders)						
<i>Tremella mesenterica</i>	Golden jelly fungus	Mycoparasite	–	–	8	8,44
<i>Cryptococcus neoformans</i>	Opportunistic pathogen	Animal pathogen/parasite	–	–	10	46,52

As an out-group, the non-wood-degrading basidiomycete species, *Tremella mesenterica* (mycoparasite) and *Cryptococcus neoformans* (animal pathogen/parasite) are also shown in the table. *Phanerochaete carnosa* has been exclusively isolated from softwood (10) has been represented as model basidiomycete for understanding the mechanism of softwood degradation. In comparison to *Ganoderma lucidum*, the model medicinal mushroom (9), *Ganoderma* sp. proved to have an additional 10 sub-families in its genome (12). For this reason, in this study we used *Ganoderma* sp. P450s as representative of *Ganoderma lucidum*. doi:10.1371/journal.pone.0086683.t001

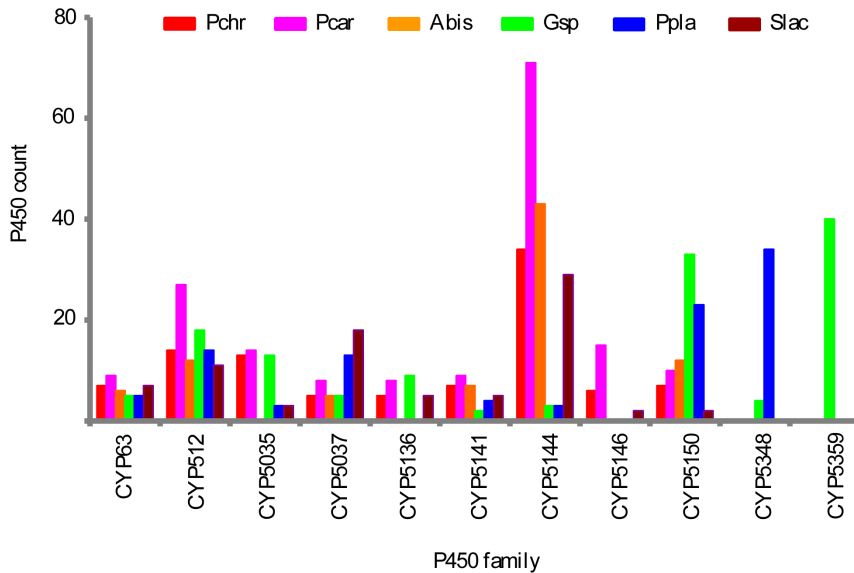


Figure 1. Identification and comparative analysis of P450 families enriched in model basidiomycete fungi. Model basidiomycetes, *Phanerochaete chrysosporium* (Pchr), *Phanerochaete carnososa* (Pcar), *Agaricus bisporus* (Abis), *Ganoderma* sp. (Gsp) as representative of *Ganoderma lucidum*, *Postia placenta* (Ppla) and *Serpula lacrymans* (Slac), showing preference for degradation of different plant material/components (Table 1) were selected for identification of P450 families enriched in their genomes. doi:10.1371/journal.pone.0086683.g001

vermispora, a selective lignin degrader, and *Agaricus bisporus*, a litter decomposer, showed the presence of 222 and 109 P450s in their genomes [7,21]. Recent genome sequencing of polypore species showed the presence of 209 P450s in each *Phlebia brevispora* and *Ganoderma* sp. and 199 P450s in *Bjerkandera adusta* [11,12]. The medicinal mushroom *Ganoderma lucidum* had 198 P450s in its genome [9].

The presence of a large number of P450s in basidiomycete genomes clearly suggests that these P450s play an important role(s) in fungal metabolism [22–24]. P450s were found to play an essential role in many pathways in the primary and secondary metabolism of fungal species, including membrane ergosterol

biosynthesis [25,26], outer spore wall components biosynthesis [27], alkane and fatty acids degradation [28], fatty acids hydroxylation [29], mycotoxins (i.e. aflatoxins, trichothecenes, and fumonisins) [30–32] and plant hormones biosynthesis (gibberellin biosynthesis) [33]. P450s from basidiomycete fungi were found to be functionally diverse and showed oxidation of a range of substrates including different classes of xenobiotic compounds [20,34–42]. Recently, a catalytically versatile P450 displaying extraordinary substrate oxidation capability was found in the model white rot basidiomycete, *Phanerochaete chrysosporium* [37]. The P450, belonging to the CYP63 family, was found to

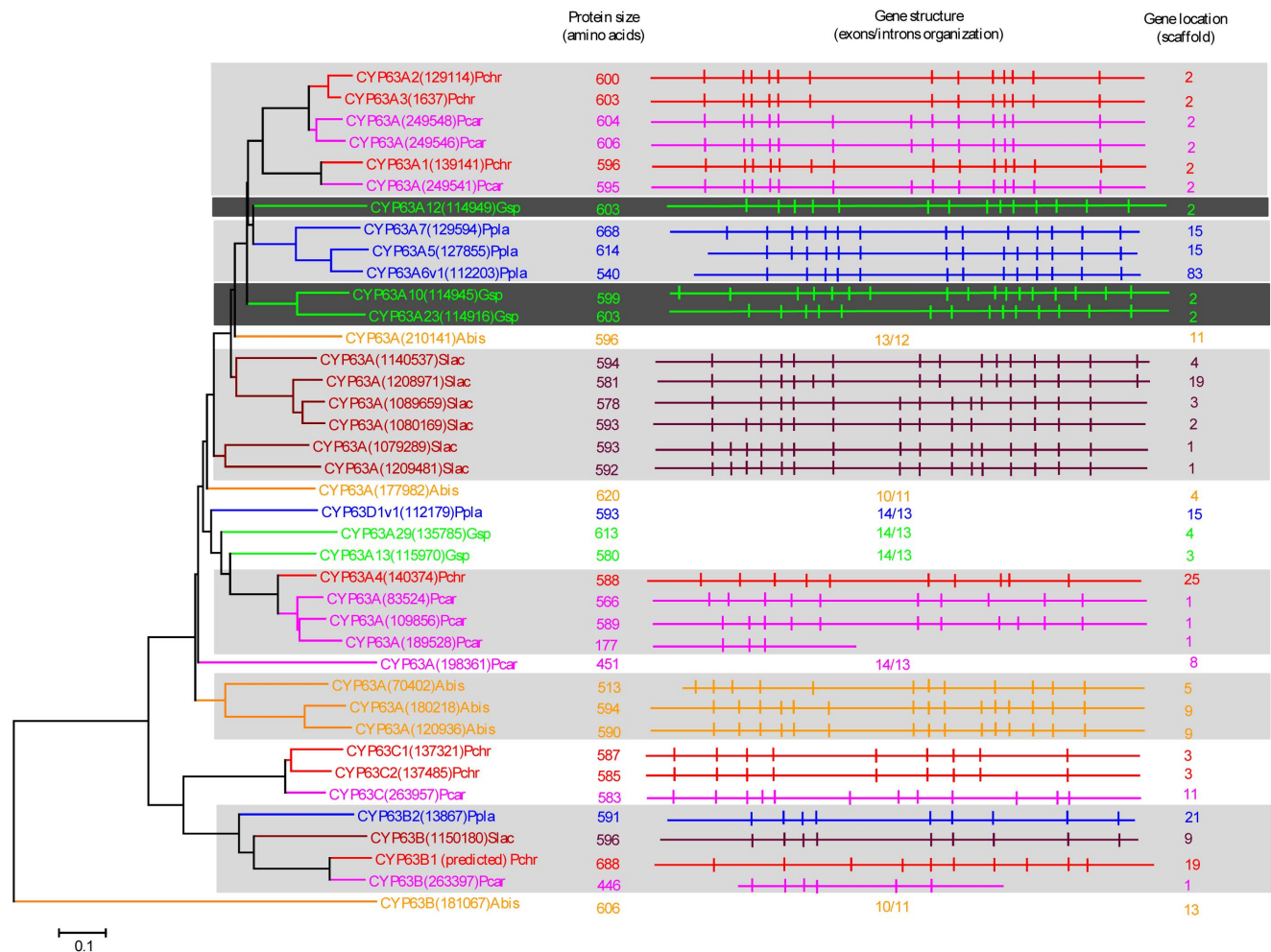


Figure 2. Phylogenetic and gene-structure analysis of CYP63 family. In total 38 CYP63 P450 sequences from six selected model basidiomycetes (Fig. 1) were included in the tree. The minimum evolution tree was constructed using the close-neighbor-interchange algorithm in MEGA (version 5.05). For easy of visual identity, the tree branch color, protein name, protein ID (parenthesis) and model basidiomycete species name were presented with unique color. The protein size in amino acids is also shown in the figure. Gene-structure analysis for each P450 was presented in the form of exon-intron organization. A graphical format showing parallel (gene size) and vertical lines (introns) is presented for P450s showing similar gene structure (highlighted with unique background color). For the rest of the P450s the number of exons and introns was shown. The genetic location of P450 is shown in the form of the scaffold number. Abbreviations: Pchr, *Phanerochaete chrysosporium*; Pcar, *Phanerochaete carnososa*; Abis, *Agaricus bisporus*; Gsp, *Ganoderma* sp.; Ppla, *Postia placenta*; Slac, *Serpula lacrymans*. doi:10.1371/journal.pone.0086683.g002

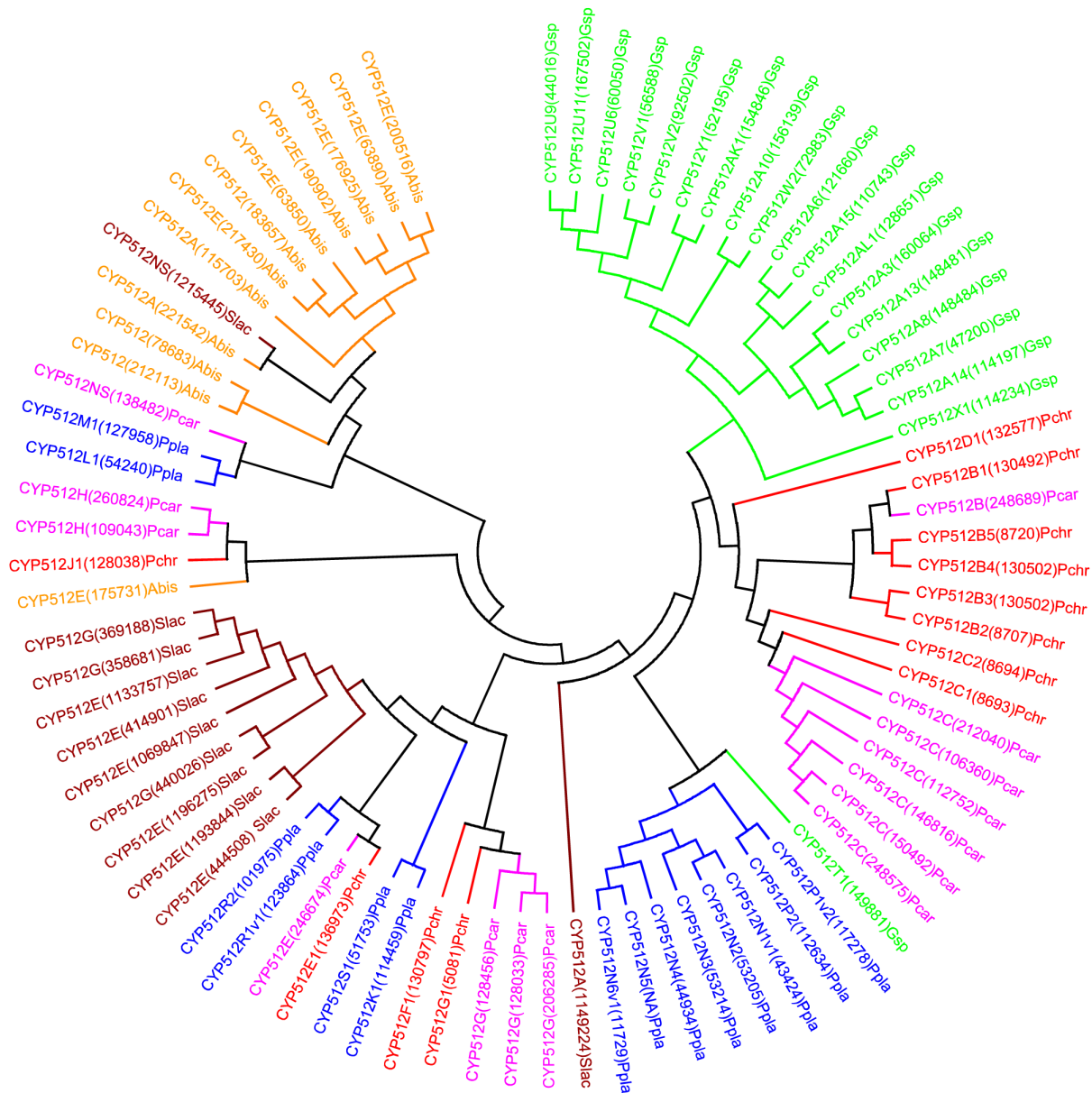


Figure 3. Minimum evolution tree of CYP512 family. In total 82 CYP512 P450 sequences were included in the tree. The tree was constructed using the close-neighbor-interchange algorithm in MEGA (version 5.05). For ease of visual identity, the tree branch color, protein name, protein ID (parenthesis) and species name were presented with unique color. Abbreviations: Pchr, *Phanerochaete chrysosporium*; Pcar, *Phanerochaete carnosae*; Abis, *Agaricus bisporus*; Gsp, *Ganoderma* sp.; Ppla, *Postia placenta*; Slac, *Serpula lacrymans*. doi:10.1371/journal.pone.0086683.g003

oxidize a range of xenobiotic compounds compared to P450s across the biological kingdoms (bacteria and animals) [37].

Identification of specific P450s from a large contingent of P450s playing an important role in fungal metabolism and fungal adaptation, such as colonization of wood, is necessary in order to engineer fungal organisms for efficient degradation/bioconversion of wood into human valuables. In this study, we followed Sir Charles Darwin's theory of natural selection to identify such P450s in the selected basidiomycete species, *Phanerochaete chrysosporium*, *Phanerochaete carnosae*, *Agaricus bisporus*, *Postia placenta*, *Ganoderma* sp. and *Serpula lacrymans*, representative of preference for different plant material/components degradation (Table 1). Furthermore, we carried out comparative evolutionary analysis and functional

analysis of P450s to understand the molecular basis for selective enrichment of P450 families in the selected basidiomycetes.

Materials and Methods

Fungal Genome Databases

Publicly available genomes of *Phanerochaete chrysosporium* [4], *Phanerochaete carnosae* [10], *Agaricus bisporus* [21], *Ganoderma* sp. [11], *Postia placenta* [5] and *Serpula lacrymans* [6] were accessed in the genome database of the Joint Genome Institute (JGI) of the US Department of Energy (US-DOE) (<http://genome.jgi.doe.gov/programs/fungi/index.jsf>) [43]. The basidiomycete strains and databases used in this study were *Phanerochaete chrysosporium* v2.0: <http://genome.jgi-psf.org/Phchr1/Phchr1.home.html>; *Phanero-*

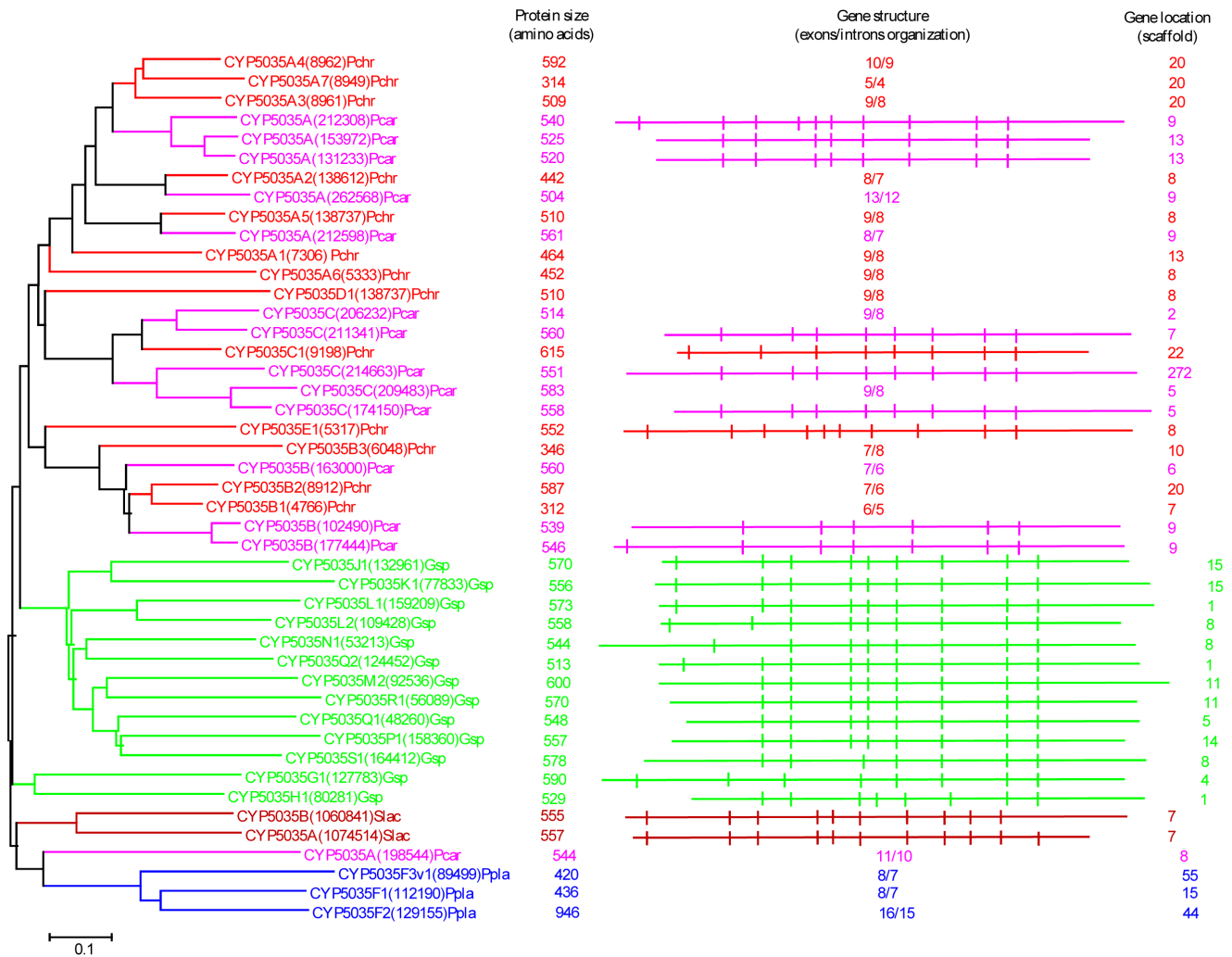


Figure 4. Phylogenetic and gene-structure analysis of CYP5035 family. In total 45 CYP5035 P450 sequences from five model basidiomycetes (Fig. 1) were included in the tree. The minimum evolution tree was constructed using the close-neighbor-interchange algorithm in MEGA (version 5.05). For ease of visual identity, the tree branch color, protein name, protein ID (parenthesis) and model basidiomycete species name were presented with unique color. The protein size in amino acids is also shown in the figure. The gene-structure analysis for each P450 was presented in the form of exon-intron organization. A graphical format showing parallel (gene size) and vertical lines (introns) is presented for P450s showing similar gene structure. For the rest of the P450s, the number of exons and introns was shown. The genetic location of P450 is shown in the form of the scaffold number. Abbreviations: Pchr, *Phanerochaete chrysosporium*; Pcar, *Phanerochaete carnos*a; Abis, *Agaricus bisporus*; Gsp, *Ganoderma* sp.; Ppla, *Postia placenta*; Slac, *Serpula lacrymans*. doi:10.1371/journal.pone.0086683.g004

*chaete carnos*a HHB-10118-Sp v1.0: <http://genome.jgi-psf.org/Phaca1/Phaca1.home.html>; *Agaricus bisporus* var *bisporus* (H97) v2.0: http://genome.jgi.doe.gov/Agabi_varbisH97_2/Agabi_varbisH97_2.home.html; *Ganoderma* sp. 10597 SS1 v1.0: <http://genome.jgi-psf.org/Gansp1/Gansp1.home.html>; *Postia placenta* MAD 698-R v1.0: <http://genome.jgi.doe.gov/Pospl1/Pospl1.home.html>; *Serpula lacrymans* S7.9 v2.0: http://genome.jgi.doe.gov/SerlaS7_9_2/SerlaS7_9_2.home.html.

Genome-wide P450 Analysis

P450 monooxygenases of selected basidiomycete species were obtained from the published data and publicly available data bases. The literature that was consulted on the respective species included the following publications: *Phanerochaete chrysosporium*: Syed and Yadav [19] and Hirose et al., [41]; *Phanerochaete carnos*a: Sukuzi et al., [10]; *Postia placenta*: Ide et al., [20] and *Ganoderma* sp.: Syed et al., [12]. Annotated P450s for *Agaricus bisporus*, *Serpula*

lacrymans and *Tremella mesenterica* were downloaded from the Fungal Cytochrome P450 Database (FCPD) (<http://p450.riceblast.snu.ac.kr/index.php?a=view>) [44]. The revised FCPD represents fungal P450 nomenclature equivalent to the standard P450 nomenclature [45]. P450s for the medicinal mushroom *Ganoderma lucidum* strain 260125-1 [9] were kindly provided by Dr David Nelson, University of Tennessee, USA. The cytochrome P450 webpage (<http://drnelson.uthsc.edu/P450seqs.dbs.html>) [46] was also visited for analysis of P450 signature domains and confirmation of pseudo P450s. Furthermore, the annotated P450s of animal pathogen/parasite *Cryptococcus neoformans* were downloaded from the cytochrome P450 webpage [46].

Among the P450 sequences resourced, as mentioned above, only the authentic P450s, i.e. those P450s containing both P450 signature motifs (heme-binding sequence motif FXXGXXXCXG and the EXXR motif in the K-helix), were selected for analysis. Hence, the P450 count reported in this study for the P450 family is

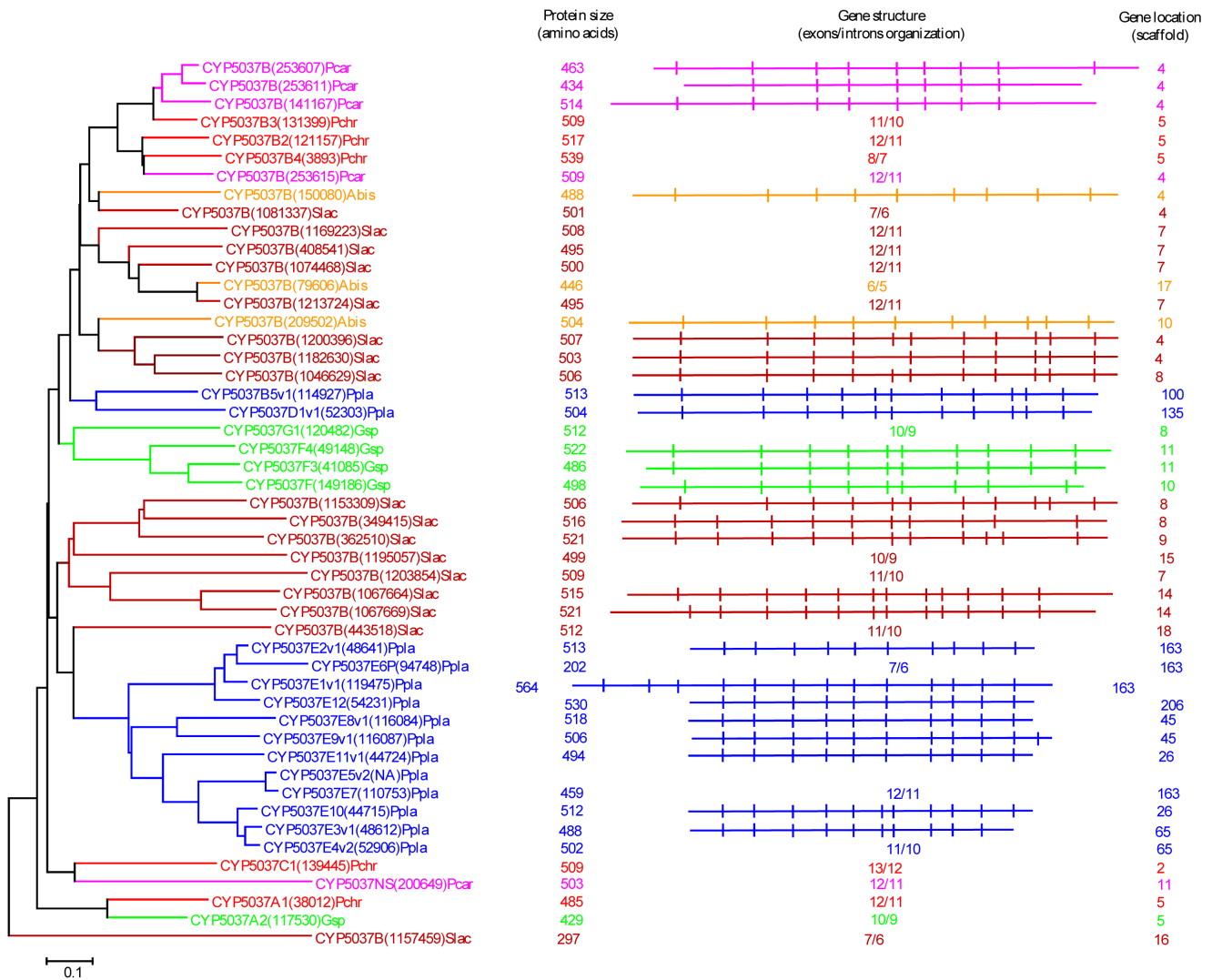


Figure 5. Phylogenetic and gene-structure analysis of CYP5037 family. In total 49 CYP5037 P450 sequences from six model basidiomycetes (Fig. 1) were included in the tree. The minimum evolution tree was constructed using the close-neighbor-interchange algorithm in MEGA (version 5.05). For ease of visual identity, the tree branch color, protein name, protein ID (parenthesis) and model basidiomycete species name were presented with unique color. The protein size in amino acids is also shown in the figure. The gene-structure analysis for each P450 was presented in the form of exon-intron organization. A graphical format showing parallel (gene size) and vertical lines (introns) is presented for P450s showing similar gene structure. For the rest of the P450s, the number of exons and introns was shown. The genetic location of P450 is shown in the form of the scaffold number. Abbreviations: Pchr, *Phanerochaete chrysosporium*; Pcar, *Phanerochaete carnosae*; Gsp, *Ganoderma* sp.; Pp1a, *Postia placenta*; Slac, *Serpula lacrymans*.

doi:10.1371/journal.pone.0086683.g005

slightly different from the P450 count presented in published literature and public data bases (Table S1). Pseudo P450s and alleles (for *Postia placenta*) are not included in this study.

Criteria for Selection of Enriched P450 Family

Selected basidiomycete species showed a large number of P450 genes in their genome (Table 1). A total of 1061 P450s were found in six basidiomycetes. The 1061 P450s were grouped under different families (Table S1). We set a 2% cut-off P450 count (~21 P450s) in the total number of P450s (1061 P450s) for a P450 family to be considered as a P450 family enriched across the selected basidiomycete species (Table S1).

Evolutionary Analysis

P450 protein sequences of the enriched family were subjected to phylogenetic analysis using the Molecular Evolutionary Genetics

Analysis (MEGA 5.05) software [47]. Phylogenetic analysis was inferred using the minimum evolution method [48]. The evolutionary distances were computed using the Poisson correction method [49] and are in the units of the number of amino acid substitutions per site. The minimum evolution tree was searched using the close-neighbor-interchange algorithm [50] at a search level of 1. The neighbor-joining algorithm [51] was used to generate the initial tree.

The minimum evolution method generates trees that show pairing of the true neighbor taxa (e.g. proteins) and reflect the true evolutionary aspect, as this method chooses the smallest value of the sum of all branches as an estimate of the tree. This method has also been widely used in P450 research for phylogenetic analysis of P450s [9]. Considering its accuracy and wide use in P450 research, in this study we used the minimum evolution method for phylogenetic analysis of P450s.

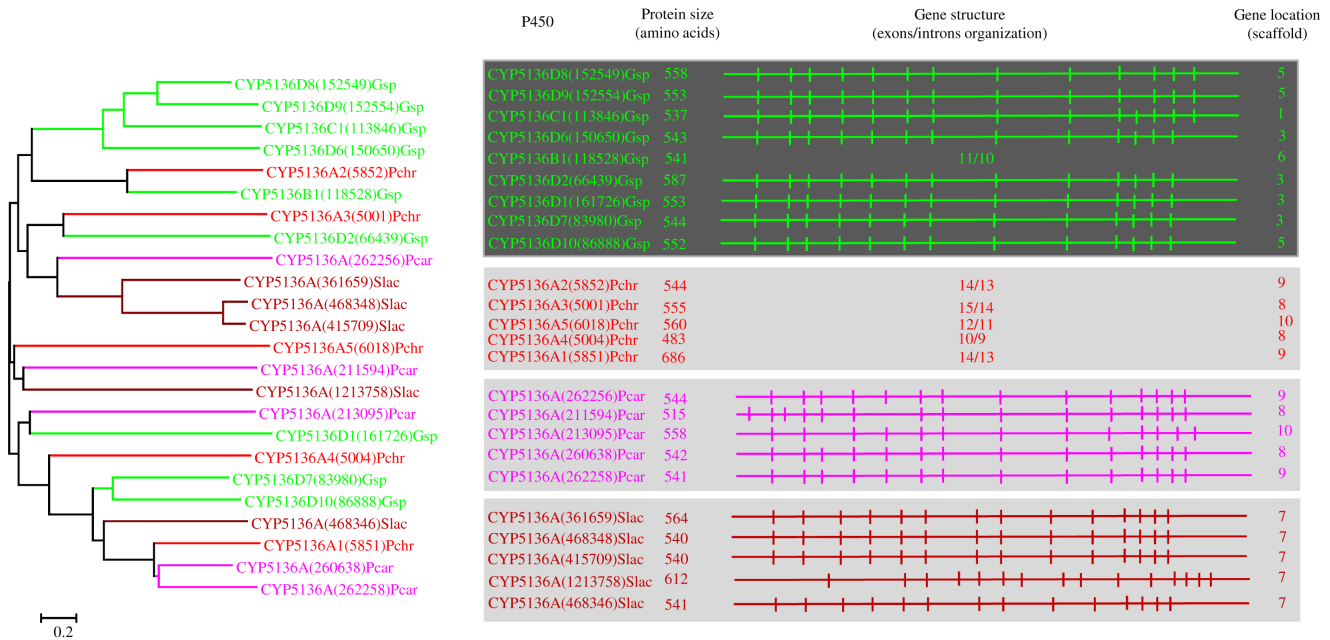


Figure 6. Phylogenetic and gene-structure analysis of CYP5136 family. Twenty-four P450 sequences from four model basidiomycetes *Phanerochaete chrysosporium* (Pchr), *Phanerochaete carmosa* (Pcar), *Ganoderma* sp. (Gsp) and *Serpula lacrymans* (Slac) were included in the tree. A minimum evolution tree was constructed using the close-neighbor-interchange algorithm in MEGA (version 5.05). For ease of visual identity, the tree branch color, protein name, protein ID (parenthesis) and model basidiomycete species name were presented in red (Pchr) and pink (Pcar). The protein size in amino acids is also shown in the figure. Gene-structure analysis for each P450 was presented in the form of exon-intron organization. A graphical format showing parallel (gene size) and vertical lines (introns) is presented for P450s showing similar gene structure (highlighted with unique background color). For the rest of the P450s, the number of exons and introns was shown. The genetic location of P450 is shown in the form of the scaffold number.

doi:10.1371/journal.pone.0086683.g006

Gene-structure Analysis

The physical location of P450 genes on a particular scaffold was identified by searching the JGI fungal genome database using the P450 protein ID. Analysis of exon-intron organization (in order to identify ortholog and paralog P450s) was carried out as follows: P450 gene structure graphics downloaded from JGI was aligned in such a way that exons with the same size would align together. Untranslated regions were manually curated for proper alignment of exons and introns. Parallel lines representing gene size and vertical lines representing introns were drawn as per gene size and intron location described in the JGI data base. P450s whose gene structures are similar are presented in the figures. The gene structure of P450s whose gene structure is not similar to any of the P450s in the family (within and across the species) is presented with the numbers of exons and introns using numerical notation. Furthermore, manually analyzed intron-exon organization was verified by the Spidey mRNA-to-genomic alignment programme (<http://www.ncbi.nlm.nih.gov/spidey/>).

Results and Discussion

In order to identify P450 families enriched across basidiomycetes, we selected six basidiomycete species representative of preference for different plant material/components degradation (Table 1). The model white rot basidiomycete *Phanerochaete chrysosporium* represents basidiomycete with the capability of hard wood degradation and complete mineralization of all components of plant cell wall material (lignin, cellulose and hemicellulose) [4]. *Phanerochaete carmosa* represents soft wood (particularly coniferous wood) degrading white rot fungi with capabilities similar to *Phanerochaete chrysosporium* [10]. *Ganoderma* sp. represents white rot

fungus with a selective lignin degradation capability and able to grow both soft and hard wood [11]. In comparison to *Ganoderma lucidum*, the medicinal mushroom [9], *Ganoderma* sp. [12] proved to have an additional 10 sub-families in its genome. For this reason, in this study we used *Ganoderma* sp. P450s as representative of *Ganoderma* strains. *Agaricus bisporus*, an edible button mushroom fungus, is a non-wood-degrading fungus and considered as model fungus for studying adaptation and growth in humic-rich leaf litter environments [21]. *Postia placenta* and *Serpula lacrymans* represent brown-rots with the capability of primarily removing cellulose and hemicellulose [5,6]. However, *Serpula lacrymans* is evolutionarily divergent compared to *Postia placenta* and well known for causing dry-rot in wood [6]. The non-wood-degrading basidiomycetes, *Tremella mesenterica* (mycoparasite) [8] and *Cryptococcus neoformans* (animal pathogen/parasite) [52] were used as an out-group in this study (Table 1).

Genome-wide Comparative Analysis and Identification of P450 Families Enriched in Model Basidiomycetes

In total 1061 P450s were found in the selected six basidiomycete species (Table S1). The P450 count in fungal species varied from 149 to 266, with the two white-rots representing the lowest (*Phanerochaete chrysosporium*) and the highest (*Phanerochaete carmosa*) number of P450s in their genomes (Table 1). The 1061 P450s found in the basidiomycete species, *Phanerochaete chrysosporium*, *Phanerochaete carmosa*, *Ganoderma* sp. *Agaricus bisporus*, *Postia placenta*, and *Serpula lacrymans*, were grouped into 68 P450 families (Table S1). Based on the 2% cut-off criterion to consider a P450 family to be an enriched family, we identified nine P450 families, CYP63, CYP512, CYP5035, CYP5037, CYP5135, CYP5141, CYP5144, CYP5146, and CYP5150, that were enriched across the selected

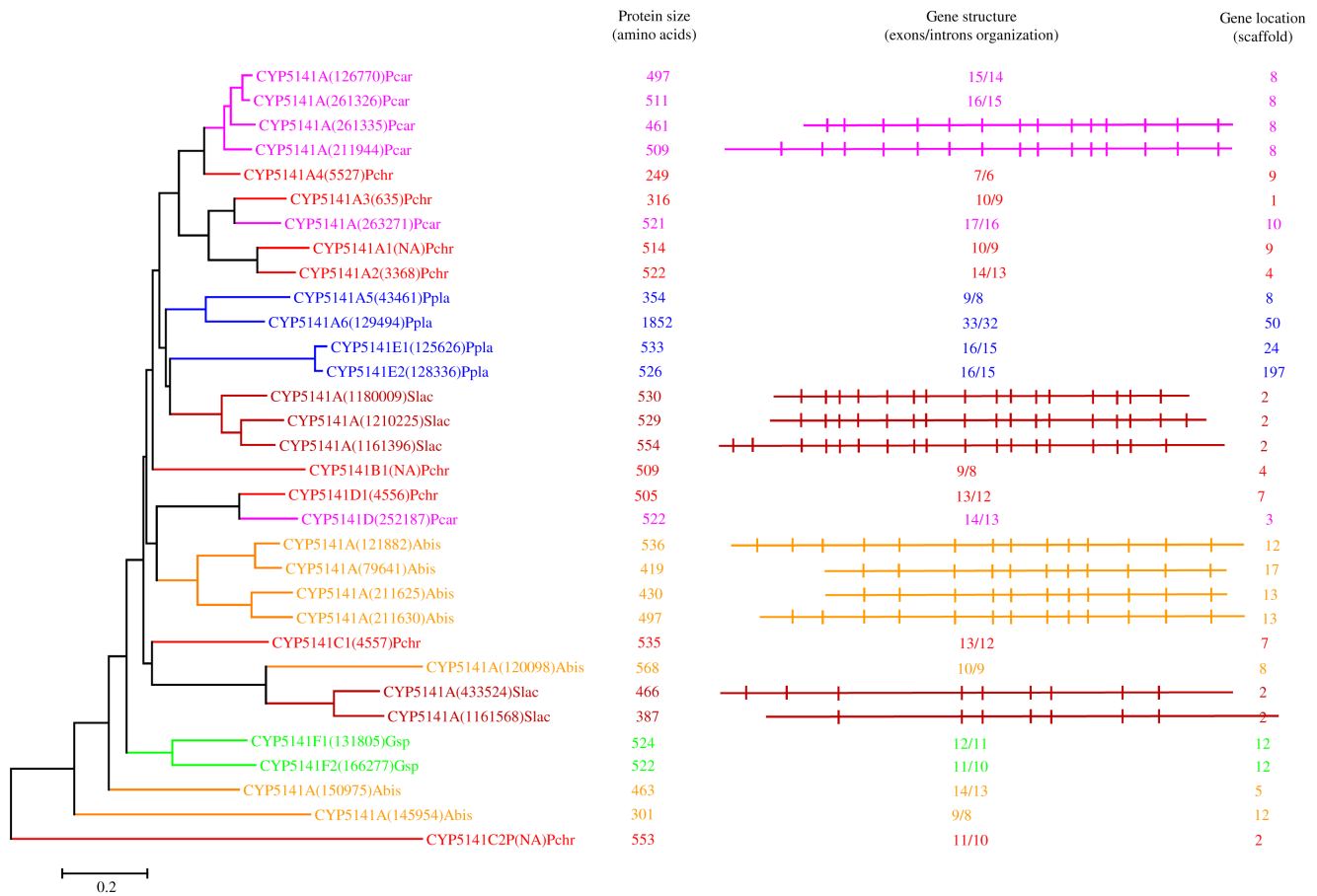


Figure 7. Phylogenetic and gene-structure analysis of CYP5141 family. Thirty-two CYP5141 P450 sequences from six model basidiomycetes (Fig. 1) were included in the tree. The minimum evolution tree was constructed using the close-neighbor-interchange algorithm in MEGA (version 5.05). For ease of visual identity, the tree branch color, protein name, protein ID (parenthesis) and model basidiomycete species name were presented with unique color. The protein size in amino acids is also shown in the figure. The gene-structure analysis for each P450 was presented in the form of exon-intron organization. A graphical format showing parallel (gene size) and vertical lines (introns) is presented for P450s showing similar gene structure. For the rest of the P450s, the number of exons and introns was shown. The genetic location of P450 is shown in the form of the scaffold number. Abbreviations: Pchr, *Phanerochaete chrysosporium*; Pcar, *Phanerochaete carmosa*; Abis, *Agaricus bisporus*; Gsp, *Ganoderma* sp.; Ppla, *Postia placenta*; Slac, *Serpula lacrymans*. doi:10.1371/journal.pone.0086683.g007

basidiomycete species and two P450 families, CYP5348 and CYP5359, that were enriched in species-specific manner (Figure 1). Among the enriched families, CYP5144 family showed the highest number of P450s (183 P450s), followed by families CYP512 (96 P450s), CYP5150 (87 P450s), CYP5037 (54 P450s), CYP5035 (46 P450s), CYP5359 (40 P450s), CYP5348 (38 P450s), CYP5141 (34 P450s) and CYP5136 (27 P450s). Analysis of enriched P450 family conservation across the selected basidiomycetes revealed the absence of the CYP5035 family in *Agaricus bisporus*. The CYP5136 family was not found in *Agaricus bisporus* and *Postia placenta* and the CYP5146 family is missing in *Agaricus bisporus*, *Ganoderma* sp. and *Postia placenta* (Figure 1). The CYP5359 family was found only in *Ganoderma* sp. Furthermore, *Ganoderma* sp. and *Postia placenta* are the only representatives of the CYP5348 family.

The selected six basidiomycete species, *Phanerochaete chrysosporium*, *Phanerochaete carmosa*, *Ganoderma* sp., *Agaricus bisporus*, *Postia placenta*, and *Serpula lacrymans*, showed a high variation in P450 count in enriched P450 families (Fig. 1 and Table S1), with the exception of the CYP63 family. The P450 count for the CYP63 family among the selected fungi ranged from 5 to 9 P450s. For the CYP5150 family, *Ganoderma* sp. and *Postia placenta* showed the

highest number of P450s (33 and 23 P450s, respectively) compared to the rest of the basidiomycetes that showed two to 12 P450s. In contrast to the P450 count observed for the CYP5150 family, *Ganoderma* sp. and *Postia placenta* showed the lowest number of P450s (three P450s each) in the CYP5144 family. The P450 count for the CYP5144 family among the rest of the four model basidiomycetes varied from 29 to 71; the highest number of CYP5144 member P450s was found in *Phanerochaete carmosa*. For the CYP5037 family the highest number of member P450s was found in model brown and dry-rots, *Postia placenta* (13 P450s) and *Serpula lacrymans* (18 P450s). The P450 family CYP5359 is exclusively present and highly enriched (40 P450s) in *Ganoderma* sp. The CYP5348 family is highly enriched in *Postia placenta* and only four CYP5348 family member P450s were found in *Ganoderma* sp. Furthermore, our analysis showed the absence of 11 enriched P450 families of plant-material-degrading basidiomycetes in the non-wood-degrading basidiomycetes, *Tremella mesenterica* and *Cryptococcus neoformans* (Table S2). It is noteworthy that the non-wood-degrading basidiomycete fungus *Tremella mesenterica* and *Cryptococcus neoformans* showed low copies of P450s (8 and 10) in their genomes (Table S2).

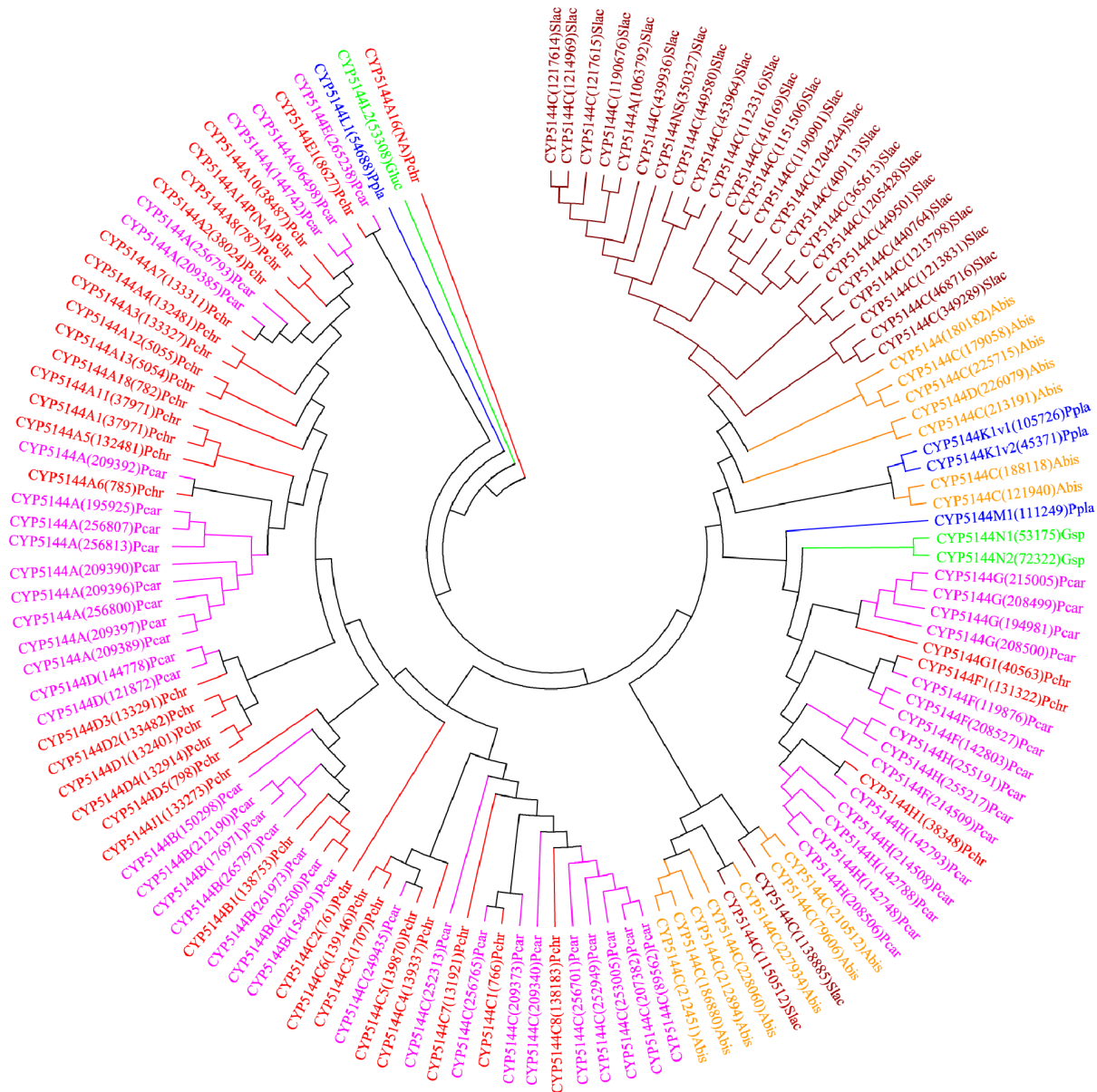


Figure 8. Phylogenetic analysis of CYP5144 family. In total 128 CYP5144 P450 sequences from six model basidiomycetes (Fig. 1) were included in the tree. The minimum evolution tree was constructed using the close-neighbor-interchange algorithm in MEGA (version 5.05). For ease of visual identity, the tree branch color, protein name, protein ID (parenthesis) and model basidiomycete species name were presented with unique color. Abbreviations: Pchr, *Phanerochaete chrysosporium*; Pcar, *Phanerochaete carmosa*; Abis, *Agaricus bisporus*; Gsp, *Ganoderma* sp.; Ppla, *Postia placenta*; Slac, *Serpula lacrymans*.

doi:10.1371/journal.pone.0086683.g008

High conservation of a few P450 families across the fungi has been well documented [22]. The CYP61 and CYP51 P450 families are highly conserved across the fungi, whereas the CYP53 and CYP505 families are fairly conserved. However, to our knowledge, comparative analysis of P450s at a family level in six model basidiomycetes representative of diverse plant material/components degradation (Table 1) has not been reported before. Hence, our study constitutes the first report on comparative P450 analysis in six model basidiomycetes and also represents an identification of enriched P450 families in the model basidiomycetes.

Enrichment of 11 P450 families in the model basidiomycete species suggests that the member P450s of the enriched family play

an important role in fungal metabolism and possibly fungal adaptation to diverse ecological niches.

Extensive P450 Gene Duplications Led to Selective P450 Family Enrichment in Model Basidiomycetes

Our genome-wide comparative analysis of P450s in selected model basidiomycetes revealed enrichment of 11 P450 families (Fig. 1). In order to gain insight into the evolution of these P450 families, we performed phylogenetic analysis and gene-structure analysis on member P450s that belong to the enriched P450 family. Phylogenetic analysis of 11 P450 families (Figures 2–11) revealed grouping of species-specific P450s in each family with the exception of P450s from *Phanerochaete* species. Joint alignment of

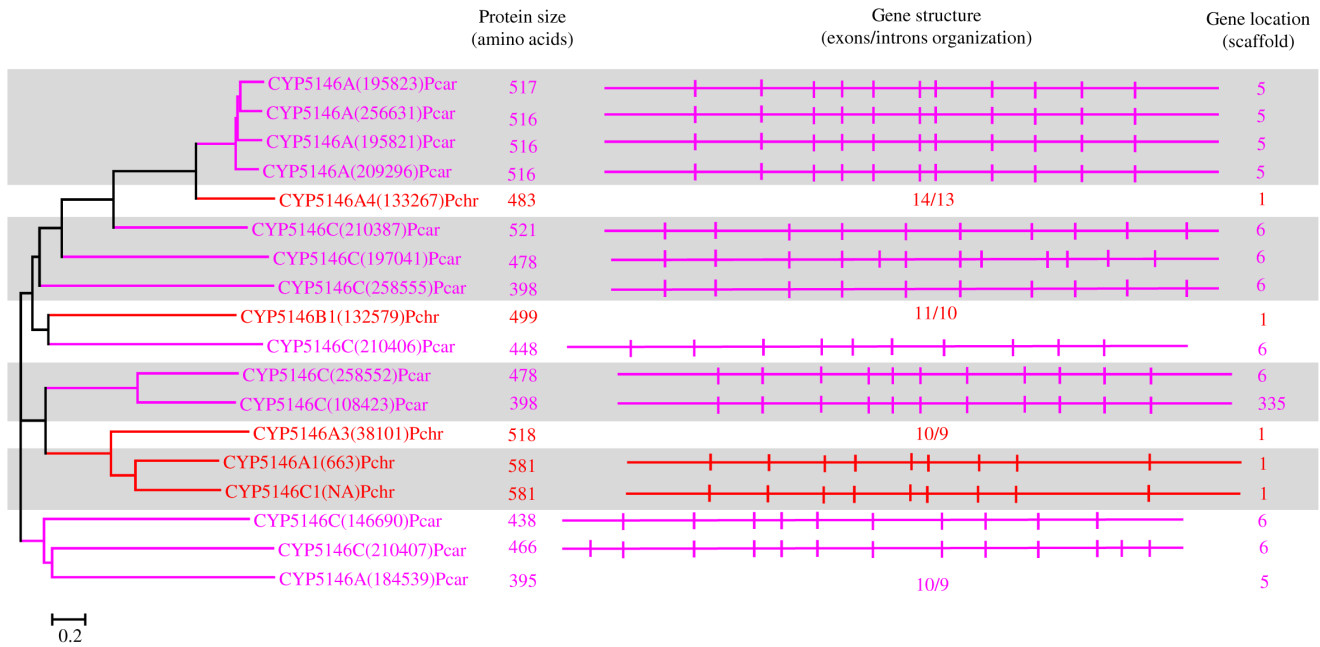


Figure 9. Phylogenetic and gene-structure analysis of CYP5146 family. Eighteen P450 sequences from two white rot basidiomycetes, *Phanerochaete chrysosporium* (Pchr) and *Phanerochaete carnosae* (Pcar), were included in the tree. The minimum evolution tree was constructed using the close-neighbor-interchange algorithm in MEGA (version 5.05). For ease of visual identity, the tree branch color, protein name, protein ID (parenthesis) and model basidiomycete species name were presented in red (Pchr) and pink (Pcar). The protein size in amino acids is shown in the figure. The gene-structure analysis for each P450 was presented in the form of exon-intron organization. A graphical format showing parallel (gene size) and vertical lines (introns) is presented for P450s showing similar gene structure (highlighted with unique color). For the rest of the P450s, the number of exons and introns was shown. The genetic location of P450 is shown in the form of the scaffold number. doi:10.1371/journal.pone.0086683.g009

Phanerochaete chrysosporium and *Phanerochaete carnosae* P450s in nine P450 families (Figures 2–10) suggested that P450s in both white-rot fungi have high homology compared to P450s from other model basidiomycetes. Conservation of high homolog P450s in both *Phanerochaete* species fits perfectly with the well-known fact that *Phanerochaete chrysosporium* and *Phanerochaete carnosae* are closely related and evolved by a recent divergence to adapt to different ecological niches. In each P450 family, a few P450 proteins (Figures 2–10) were found aligned with P450s from different basidiomycete species, indicating that these P450s possibly descended from a common origin before speciation (orthologs). Species-specific alignment of P450s in P450 families enriched in basidiomycetes clearly suggests that these P450s are paralogs and possibly evolved by gene duplications.

In order to understand evolution of P450s in model basidiomycetes, we carried out gene-structure analysis on member P450s belonging to the enriched P450 family. The genetic location of P450s (Figures 2, 4–7, 9, 11, 12, S1–S3) across the model basidiomycetes suggested that the majority of the P450s belonging to the same family are tandemly arranged (located on the same scaffold) (Table 2). Tandem arrangement of P450s of the same family is an indication of possible gene duplication. Exon-intron organization of P450s revealed species-specific conservation in size of the exons and location of introns (Figures 2, 4–7, 9, 11, 12, S1–S3). This strongly suggests that P450s are extensively duplicated in model basidiomycetes after speciation (paralogs), possibly to cater to the need for adaptation to diverse ecological niches. The genetic location of duplicated P450s (Table 2) revealed tandem arrangement of a large number of duplicated P450s. Tandem gene duplication is a faster way of achieving large numbers of the same genes in order to adapt to ecological niches. Based on gene structure (exon-intron arrangement), we also identified a large

number of ortholog P450s in the P450 families. In the CYP63 family, a large number of ortholog P450s were found between *Phanerochaete chrysosporium* and *Phanerochaete carnosae* (Fig. 2). A single ortholog P450 was found between model dry-rot fungus *Serpula lacrymans* (CYP63B, protein ID: 1150180) and model brown-rot fungus *Postia placenta* (CYP63B2, protein ID: 13867) (Fig. 2). In the CYP512 family a single ortholog P450 was found between *Phanerochaete chrysosporium* (CYP512E1, protein ID: 136973) and *Phanerochaete carnosae* (CYP512E, protein ID: 246674) (Fig. S1). In the CYP5035 family ortholog P450 of *Phanerochaete chrysosporium* (CYP5035C1, protein ID: 9198) was duplicated eight times in *Phanerochaete carnosae* (Fig. 4). A similar phenomenon was observed in the CYP5141 family, where P450 of *Phanerochaete chrysosporium*, CYP5144G1 (protein ID: 40563) is duplicated five times in *Phanerochaete carnosae* (Fig. S2). Exon-intron organization of CYP5150 family members (Fig. S3) showed high conservation in the size of exons, location of introns and number of introns in the genes across the model basidiomycete species (Table 2). This indicates that the majority of the CYP5150 family P450s originated before the speciation (orthologs). Gene-structure analysis showed extensive gene duplications of P450s in the P450 families CYP5348 (Fig. 11) and CYP5359 (Fig. 12); those are present in *Ganoderma* sp. and *Postia placenta* and only in *Ganoderma* sp. (Fig. 1).

A detailed analysis of the number of introns in members of the enriched P450 family showed a characteristic pattern (Table 2) that further supports extensive duplication of P450 genes in basidiomycetes. We performed thorough analysis of the size range of the introns and number of P450s containing the same number of introns in enriched P450 families (Table 2). It is noteworthy that member P450s of enriched families showed selective enrichment for the number of introns in their gene structure; for example, 13

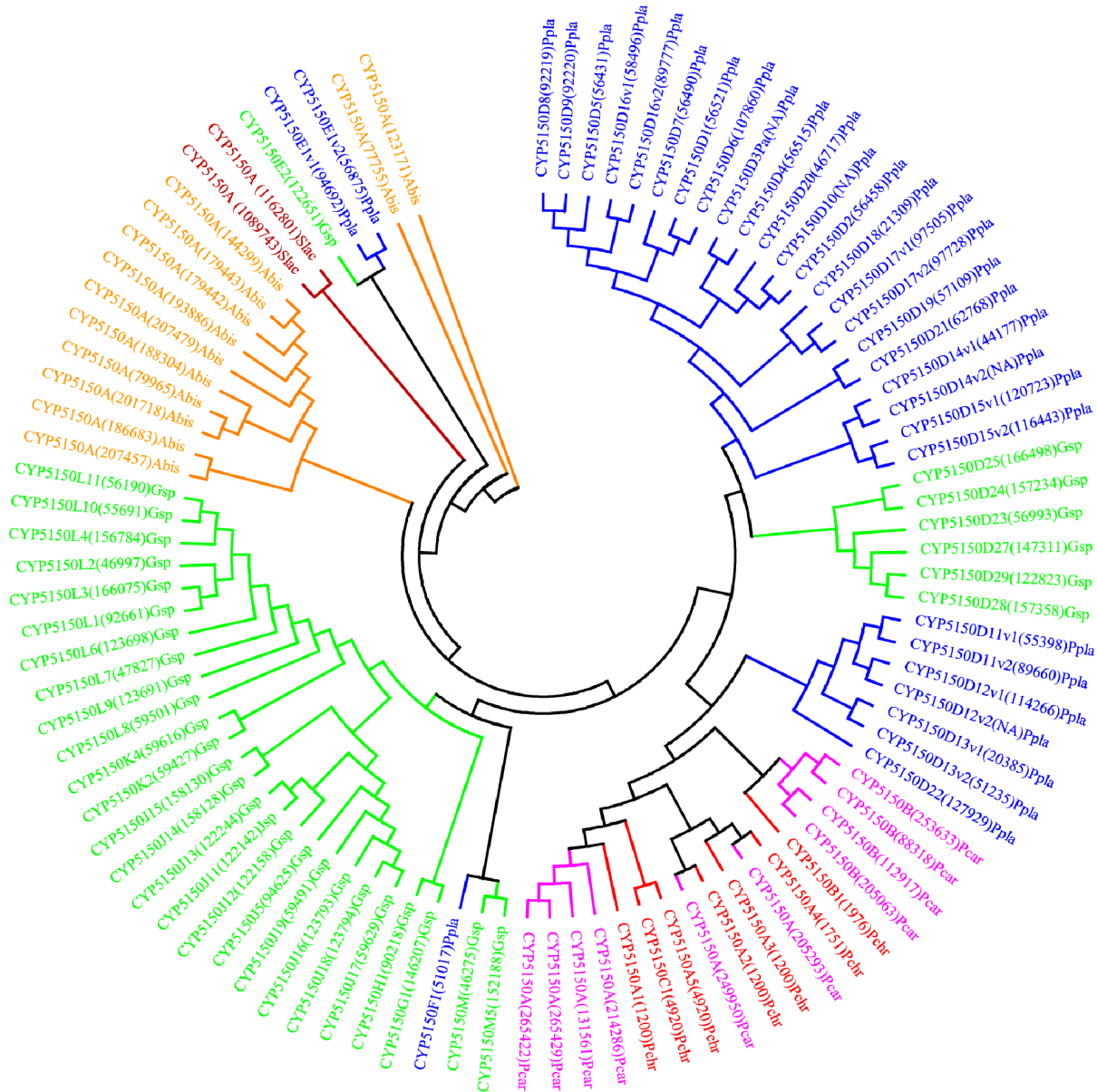


Figure 10. Phylogenetic analysis of CYP5150 family. In total 96 CYP5150 P450 sequences from six model basidiomycetes (Fig. 1) were included in the tree. The minimum evolution tree was constructed using the close-neighbor-interchange algorithm in MEGA (version 5.05). For ease of visual identity, the tree branch color, protein name, protein ID (parenthesis) and model basidiomycete species name were presented with unique color. Abbreviations: Pch, *Phanerochaete chrysosporium*; Pcar, *Phanerochaete carnososa*; Abis, *Agaricus bisporus*; Gsp, *Ganoderma* sp.; Ppla, *Postia placenta*; Slac, *Serpula lacrymans*.
doi:10.1371/journal.pone.0086683.g010

introns in P450 families CYP63 and CYP5150; eight introns in CYP5035 family; 10 introns in CYP512 family; 11 and 10 introns in CYP5037 family; 13 to 15 introns in CYP5136 family; 11 introns in CYP5144 family and 12 introns in CYP5348 family (Table 2).

In the light of the above results, we conclude that extensive gene duplications, particularly tandem gene duplication of P450s, led enrichment of these P450 families in the selected model basidiomycetes, possibly in response to ecological adaptation. Functional analysis of P450s will provide an answer on the physiological significance for enrichment of certain P450 families in these model basidiomycetes.

Members of Enriched P450 Families are Catalytically Versatile and show Extraordinary Substrate Oxidation Capabilities

Enrichment of certain P450 families (identified in this study) in the selected model basidiomycete species suggests that these enriched P450 family proteins play a key role in fungal physiology (primary or secondary metabolism). Considering the large number of P450 proteins used in this study and the availability of functional data on fungal P450s [20,34–42], we conducted an extensive literature review to reveal the substrate and catalytic specificities of P450 proteins belonging to the enriched families. Our analysis demonstrated that P450s belonging to the enriched families are catalytically versatile and show broad substrate

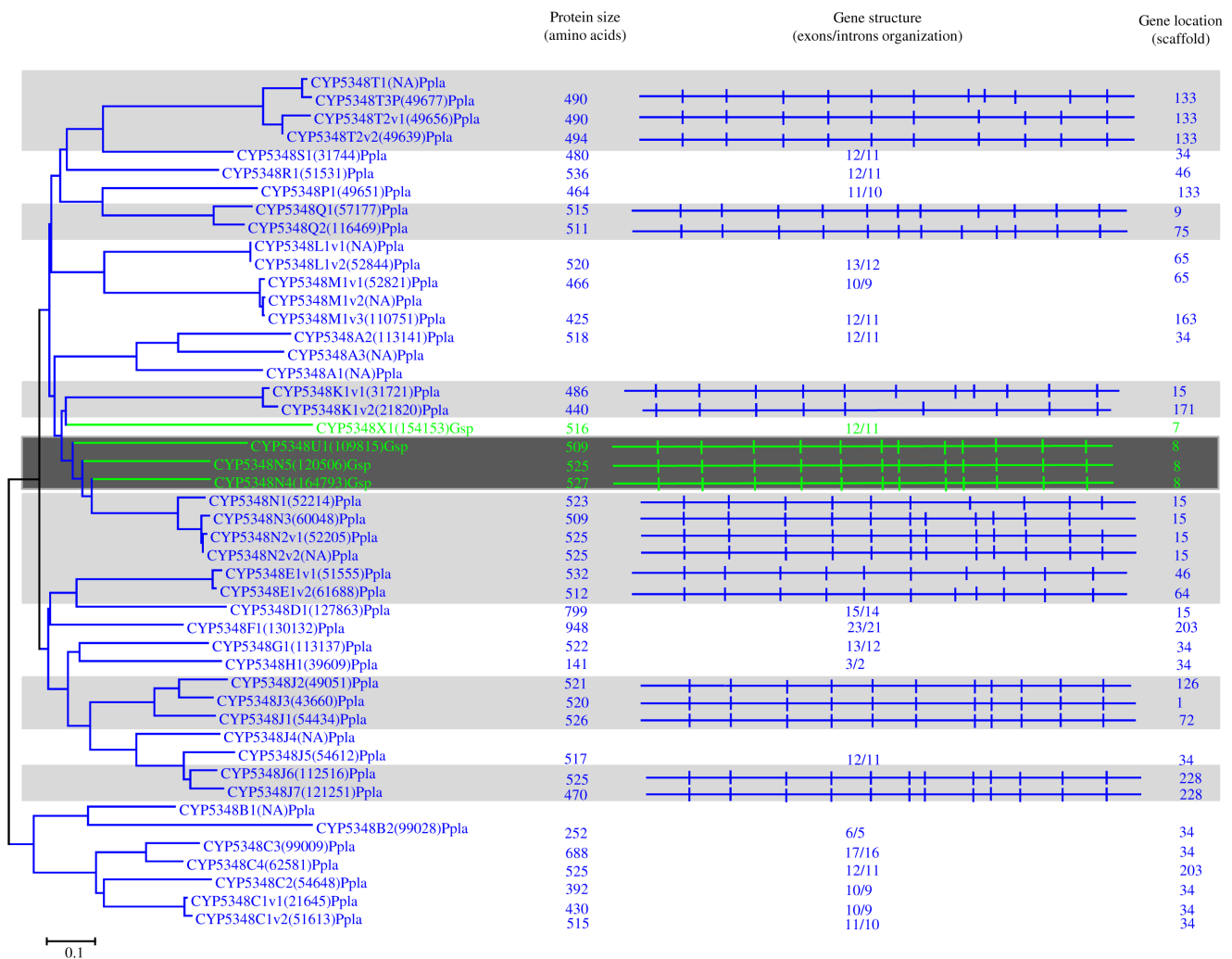


Figure 11. Phylogenetic and gene-structure analysis of CYP5348 family. In total 47 CYP5348 P450 sequences from two model basidiomycetes, *Postia placenta* (Ppla) and *Ganoderma* sp. (Gsp), were included in the tree. The minimum evolution tree was constructed using the close-neighbor-interchange algorithm in MEGA (version 5.05). For ease of visual identity, the tree branch color, protein name, protein ID (parenthesis) and model basidiomycete species name were presented in blue (Ppla) and magenta (Gsp). The protein size in amino acids is shown in the figure. The gene-structure analysis for each P450 was presented in the form of exon-intron organization. A graphical format showing parallel (gene size) and vertical lines (introns) is presented for P450s showing similar gene structure. For the rest of the P450s, the number of exons and introns was shown. The genetic location of P450 is shown in the form of the scaffold number. doi:10.1371/journal.pone.0086683.g011

specificity (Fig. 13 and Table S3). As shown in Fig. 13, a range of substrates belonging to different classes of compounds, such as hydrocarbons, steroids, plant compounds and pharmaceutical chemicals, were oxidized by member P450s of the enriched P450 family. Details on the catalytic versatility of member P450s of the enriched family are presented in Table S3. In a recent study, the CYP63 family P450 from *Phanerochaete chrysosporium* showed catalytic versatility and oxidized a range of xenobiotic compounds, such as hydrocarbons including alkanes, polycyclic aromatic compounds and alkylphenols [37]. The CYP63 family's P450 oxidation capabilities were found to be superior compared to P450s across the biological kingdoms (bacteria and animals) [37]. Furthermore, the CYP63 family P450 from *Postia placenta* was found to oxidize heterocyclic aromatics [20].

CYP512 family member P450s showed broad substrate specificity and oxidized polycyclic aromatics [38], heterocyclic aromatics, plant compounds (resins) and steroids [41] (Table S3). A recent study describing the genome sequencing and transcrip-

tion analysis of the medicinal mushroom, *Ganoderma lucidum* [9], revealed up-regulation of CYP512 family member P450s during synthesis of steroid lanosterol. Based on the oxidation of steroids (testosterone) [41] and up-regulation during synthesis of lanosterol, it is hypothesized that CYP512 family proteins may be involved in triterpenoids biosynthesis in *Ganoderma lucidum* [9]. Oxidation of plant defense chemicals such as resins by CYP512 [20] further suggests that CYP512 family members play a key role in detoxification of plant defense chemicals and possibly help fungi to colonize on wood. CYP5035 family proteins were found to oxidize plant chemicals, i.e. resin and flavonoids and the pharmaceutical chemical naproxen [41] (Table S3). Among the enriched families, member P450s belonging to the CYP5136, CYP5141 and CYP5150 families displayed diverse catalytic activities and oxidized hydrocarbons, plant chemicals, steroids and pharmaceuticals (Table S3). This clearly suggests that CYP5136, CYP5141 and CYP5150 family member P450s play a key role both in xenobiotic compounds oxidation and fungal

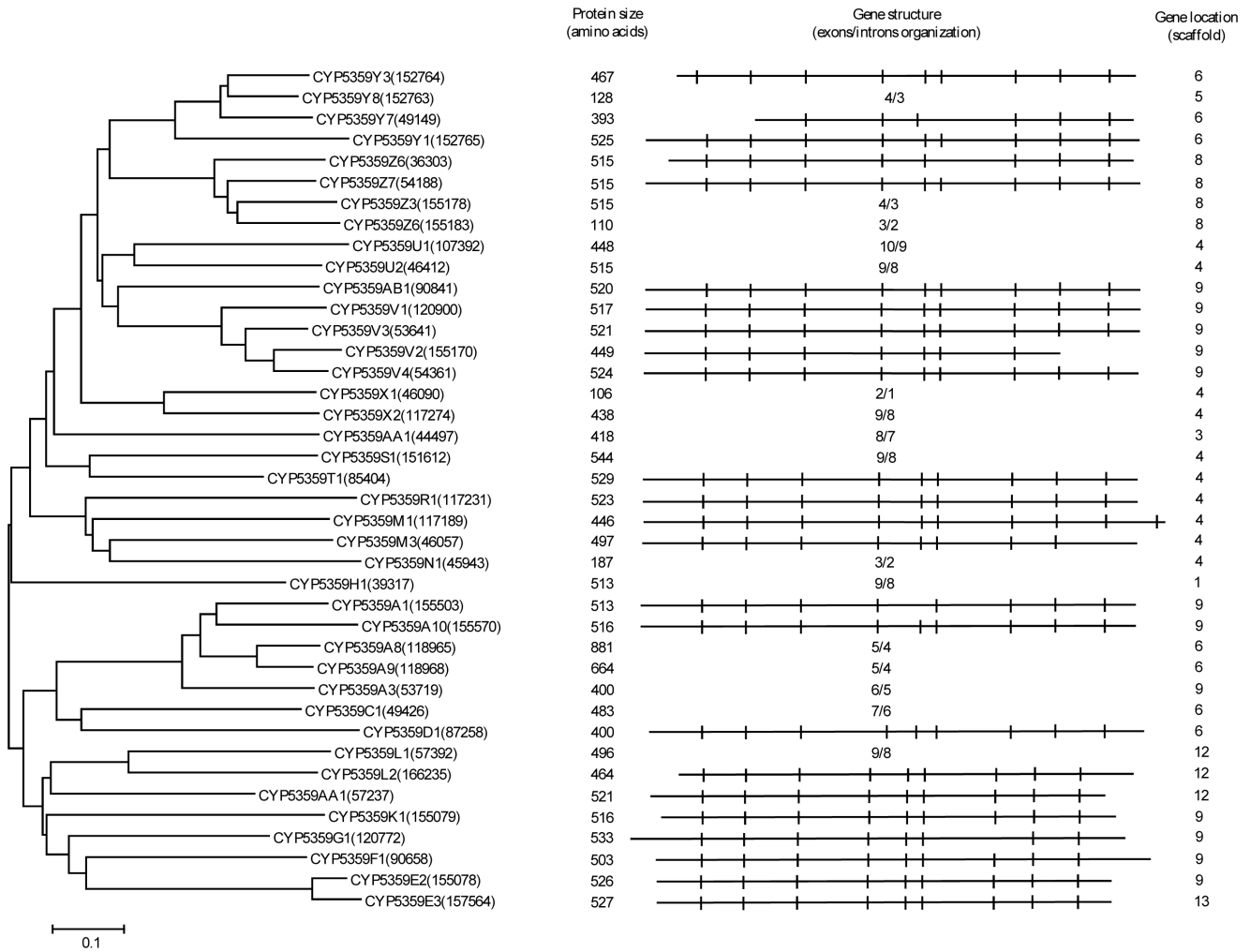


Figure 12. Phylogenetic and gene-structure analysis of CYP5359 family. Forty CYP5359 P450 sequences from *Ganoderma* sp. were included in the tree. A minimum evolution tree was constructed using the close-neighbor-interchange algorithm in MEGA (version 5.05). The protein size in amino acids is shown in the figure. The gene-structure analysis for each P450 was presented in the form of exon-intron organization. A graphical format showing parallel (gene size) and vertical lines (introns) is presented for P450s showing similar gene structure. For the rest of the P450s, the number of exons and introns was shown. The genetic location of P450 is shown in the form of the scaffold number. doi:10.1371/journal.pone.0086683.g012

primary and secondary metabolism. Proteins of the CYP5144 family, the largest P450 contingent family across the selected model basidiomycetes, showed oxidation of hydrocarbons, steroids and pharmaceuticals (Table S3). Based on up-regulation of CYP5144 P450s during synthesis of lanosterol steroid by *Ganoderma lucidum* [9], it is presumed that CYP5144 proteins were involved in fungal steroid metabolism. CYP5146 and CYP5348 family members showed oxidation of hydrocarbons including polycyclic aromatic compounds. However, compared to CYP5348 family proteins, CYP5146 family proteins showed further oxidation of heterocyclic aromatic compounds (Table S3). No data on functional analysis of the CYP5359 family, a newly identified family in *Ganoderma* sp., is available. However, the presence and enrichment of the CYP5359 family only in *Ganoderma* strains, *Ganoderma* sp. [12] and *Ganoderma lucidum* [9], suggest that CYP5359 family member P450s may be involved in the generation of bio-active compounds produced by this medicinal mushroom fungus.

Role of Enriched P450 Families in Fungal Colonization of Wood

Enrichment of specific P450 families (Figure 1) in the selected model basidiomycete species showing preferences for degradation of different plant material (Table 1) suggested that member P450s belonging to these enriched families have a common function, possibly in fungal adaptation to diverse ecological niches by involvement in oxidation of plant material. Here, we present two types of evidence in support of the hypothesis. Oxidation of plant defense chemicals such as resins and coumarin by member P450s of enriched families [20,41] (Table S3) indicates (direct evidence) that P450s are involved in detoxification of plant defense chemicals. Detoxification of plant defense chemicals is crucial in colonization of fungus on wood material. Indirect evidence on P450 involvement in plant material degradation can be obtained from P450 gene up-regulation studies [53–58]. Transcriptome analysis studies using the basidiomycetes, *Phanerochaete chrysosporium*, *Phanerochaete carnosia* and *Postia placenta*, showed up-regulation of member P450s that belong to enriched families during the growth of fungus on wood components or under growth conditions similar

Table 2. Analysis of P450 gene duplications and gene-structure (introns) in P450 families enriched in the basidiomycete species, *Phanerochaete chrysosporium*, *Phanerochaete carnososa*, *Agaricus bisporus*, *Ganoderma* sp., *Postia placenta*, and *Serpula lacrymans*.

P450 Family		basidiomycete						Figure	
		<i>Phanerochaete chrysosporium</i>	<i>Phanerochaete carnososa</i>	<i>Agaricus bisporus</i>	<i>Ganoderma</i> sp.	<i>Postia placenta</i>	<i>Serpula lacrymans</i>		
CYP63	No. of P450s duplicated	7	8	3	3	4	7	Fig. 2	
	Gene location ^a	Scaffolds	2,25,3,19	2,1,11	5,9	2	15,21,83		1,2,3,4,9,19
		No. of P450s	3,1,2,1	3,4,1	1,2	3	2,1,1		2,1,1,1,1,1
	Introns ^b	min-max	9–14	6–14	11–15	14–17	9–14		9–16
		P/I	2/13	3/13	2/15;2/12;2/11	2/14	2/14;2/13		3/14;2/16
CYP512	No. of P450s duplicated	8	12	9	17	6	9	Fig. S1	
	Gene location	Scaffolds	4,14,18	1,2,6,8,9,13,657	2,14	1,3,5,8,10,11,16	8,48,98,		1,6,9,13,18
		No. of P450s	1,1,6	4,1,1,2,2,1,1	8,1	5,1,2,3,2,2,2	2,1,3		3,2,1,1,2
	Introns	min-max	7–10	8–11	9–11	7–11	8–18		9–13
		P/I	5/10;5/8	6/9;3/10	5/10;3/14	14/10	7/10		7/14
CYP5035	No. of P450s duplicated	2	8	FA	13	None	7	Fig. 4	
	Gene location	Scaffolds	8,22	5,7,9,13,272		1,4,5,8,11,14,15	7		
		No. of P450s	1,1	1,1,3,2,1		3,1,1,3,2,1,2	2		
	Introns	min-max	6–10	6–12		7–9	7–15		NA
		P/I	6/8	8/8		5/9;7/8	2/7		NA
CYP5037	No. of P450s duplicated	None	3	2	3	10	8	Fig. 5	
	Gene location	Scaffolds		4	4,10	10,11	26,45,65,100,135,163,206		4,8,9,14
		No. of P450s		3	1,1	1,2	2,2,1,1,1,2,1		2,3,1,2
	Introns	min-max	7–12	7–11	5–10	9–10	10–13		6–12
		P/I	2/11	2/11	None	3/9;2/10	5/11;6/10		7/11
CYP5136	No. of P450s duplicated	None	5	FA	8	FA	5	Fig. 6	
	Gene location	Scaffolds		8,9,10		1,3,5	7		
		No. of P450s		2,2,1		1,4,3			5
	Introns	min-max	9–14	13–15		13–14			14–15
		P/I	2/13	3/14		7/13			4/15
CYP5141	No. of P450s duplicated	None	2	4	None	None	5	Fig. 7	
	Gene location	Scaffolds		8	12,13,17		2		
		No. of P450s		2	1,2,1				5
	Introns	min-max	8–13	13–16	9–14	NA	15–32		7–18
		P/I	2/12	2/15;2/14	2/11	NA	2/15		None
CYP5144	No. of P450s duplicated	17	42	7	3	3	18	Fig. S2	
	Gene location	Scaffolds	5,1,8,2,94	5,85,13,6,9,67,2,3 1135,	6,9,12,17,8,15	5	34,10,80		23,9,18,7,8, 10,2,11

Table 2. Cont.

P450 Family	basidiomycete							Figure	
		<i>Phanerochaete chrysosporium</i>	<i>Phanerochaete carnososa</i>	<i>Agaricus bisporus</i>	<i>Ganoderma sp.</i>	<i>Postia placenta</i>	<i>Serpula lacrymans</i>		
	No. of P450s	1,10,2,3,1	29,2,1,1,3,1,1,3,1	1,1,2,1,1,1	3	1,1,1	2,1,1,6,3,3,1,1		
	Introns	min-max	8–13	9–27	7–11	9–12	9–12	8–13	
		P/I	11/13;6/11	12/13;13/11;7/10	4/11;5/9	NA	NA	9/11;8/10	
CYP5146	No. of P450s duplicated		2	12	FA	FA	FA	2	Fig. 9
	Gene location	Scaffolds	1	5,6,335				1	
		No. of P450s	2	4,7,1				2	
	Introns	min-max	9–13	9–12				NA	
		P/I	3/9	6/11;4/10				NA	
CYP5150	No. of P450s duplicated		3	9	12	33	28	2	Fig. S3
	Gene location	Scaffolds	2,8	2,4,13	17,13,7,18,3	12,1,5,4,14,8,11	Distributed on 22 scaffolds	3	
		No. of P450s	2,1	4,1,4	1,2,7,1,1	8,1,2,2,13,1,6		2	
	Introns	min-max	11–12	11–14	8–17	10–14	10–20	NA	
		P/I	2/11	6/13	5/16;4/17	9/13;12/12;7/11	19/13	2/13	
CYP5348	No. of P450s duplicated		FA	FA	FA	3	18	FA	Fig. 11
	Gene location	Scaffolds				8	133,9,75,15,171,46,64,126,1,72,228		
		No. of P450s				3	3,1,1,5,1,1,1,1,1,2		
	Introns	min-max				11–12	9–21		
		P/I				3/12	6/12;14/11;6/10		
CYP5359	No. of P450s duplicated		FA	FA	FA	24	FA	FA	Fig. 12
	Gene location	Scaffolds				4,6,8,9,12,13			
		No. of P450s				4,4,2,11,2,1			
	Introns	min-max				4–10			
		P/I				17/9			

^aScaffolds and P450s present on the scaffold were separated by commas. For more information on tandem gene arrangements in scaffold, see figures.

^bFor each P450 family the minimum and maximum number (min-max) of introns observed in member P450s (≥400 amino acid length) were presented. A number of P450s showing the same number of introns in their gene-structure (P/I) are also presented in the table.

Abbreviations: FA, Family is absent in the fungus; NA, not applicable owing to the presence of single or double copies of P450 genes and P450s with short amino acid length.

doi:10.1371/journal.pone.0086683.t002

to fungal wood colonization. Growth of *Phanerochaete chrysosporium* under ligninolytic conditions showed up-regulation of CYP63 [53] and up-regulation of CYP5035 was observed under ligninolytic conditions supplemented with either glucose [55] or cellulose [54,56]. Growth of *Phanerochaete carnososa* on wood resulted in up-regulation of 21 P450s [58]. Among the 21 P450s up-regulated, 17 P450s belonged to enriched families such as CYP5037 (one P450), CYP5144 (six P450s), CYP5036 (one P450), CYP63 (one P450), CYP5141 (three P450s), CYP512 (two P450s) and CYP5150 (three P450s) (the number of P450s found up-regulated in member P450 families is shown in parenthesis). Furthermore, up-regulation of CYP5150 (three P450s) and CYP512 (single P450) family members was observed during *Postia placenta* growth on wood material [57].

Based on the above data, we hypothesize that basidiomycete P450s, particularly members of an enriched P450 family, play key roles in fungal colonization of wood *via* either detoxification of plant defense chemicals or degradation of compounds derived from plant components (lignin, cellulose or hemicellulose). Further support for our hypothesis can be found in the fact that none of the 11 enriched P450 families were found in non-wood-degrading basidiomycetes (Table S2) strongly indicating the role of the members of the enriched P450 families in fungal colonization of wood. However, the specific catalytic roles of P450s up-regulated in model basidiomycetes are yet to be elucidated.

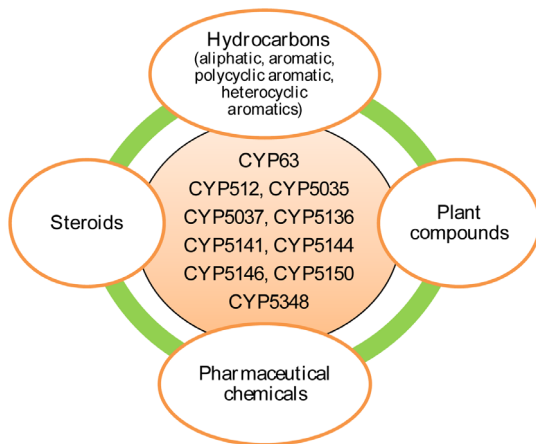


Figure 13. Catalytic versatility of members of P450 families enriched in selected six model basidiomycete fungi. Member P450s of enriched P450 families (shown in the center) are found to be catalytically versatile and show oxidation of different classes of compounds i.e. hydrocarbons, plant compounds, pharmaceutical chemicals and steroids. A detailed list on substrate specificity of enriched P450 family members is given in Table S3.

Conclusions

The presence of a large contingent of P450s in fungi, particularly wood-degrading basidiomycetes, implies their important role in fungal metabolism and adaptation to diverse ecological niches. Following Sir Charles Darwin's theory of natural selection, we performed genome-wide comparative P450 analysis and evolutionary analysis of P450 families to identify specific P450 families enriched in model basidiomycetes and to understand the molecular basis for selective P450 family enrichment. Our analysis showed enrichment of 11 P450 families out of 68 P450 families found in the basidiomycetes, *Phanerochaete chrysosporium*, *Phanerochaete carnososa*, *Agaricus bisporus*, *Postia placenta*, *Ganoderma* sp. and *Serpula lacrymans*. Evolutionary analysis on member P450s of enriched families suggested that extensive gene duplications, including tandem gene duplications, led to the enrichment of these families in model basidiomycetes. Functional analysis and gene up-regulation data suggested that the enriched P450 families of model basidiomycetes had a common physiological function, i.e. degradation of plant defense chemicals and plant-material-derived compounds, especially lignin derived compounds. It is noteworthy that members of enriched P450 families are catalytically diverse and show complement function. To our knowledge, this study is the first of its kind on the identification P450 families enriched in model basidiomycetes and comparative evolutionary analysis of representative P450s from an enriched family.

Supporting Information

Figure S1 Gene-structure analysis of CYP512 family. In total 82 CYP512 P450 sequences from six model basidiomycetes (Fig. 1) were included in the tree. The minimum evolution tree was constructed using the close-neighbor-interchange algorithm in MEGA (version 5.05). For ease of visual identity, the tree branch color, protein name, protein ID (parenthesis) and model basidiomycete species name were presented with unique color. The protein size in amino acids is also shown in the figure. The gene-structure analysis for each P450 was presented in the form of

exon-intron organization. A graphical format showing parallel (gene size) and vertical lines (introns) is presented for P450s showing similar gene structure (highlighted with unique background color). For the rest of the P450s, the number of exons and introns was shown. The genetic location of P450 is shown in the form of the scaffold number. Abbreviations: Pchr, *Phanerochaete chrysosporium*; Pcar, *Phanerochaete carnososa*; Abis, *Agaricus bisporus*; Gsp, *Ganoderma* sp.; Ppla, *Postia placenta*; Slac, *Serpula lacrymans*. (PDF)

Figure S2 Gene-structure analysis of CYP5144 family. Gene-structure analysis for each P450 was presented in the form of exon-intron organization. A graphical format showing parallel (gene size) and vertical lines (introns) is presented for P450s showing similar gene structure (also highlighted with unique background color). For the rest of the P450s, the number of exons and introns was shown. For ease of visual identity, the P450 name, protein ID (parenthesis) and model basidiomycete species name were presented with unique color. The protein size in amino acids and genetic location of P450 in the form of the scaffold number are shown in the figure. (PDF)

Figure S3 Gene-structure analysis of CYP5150 family. Gene-structure analysis for each P450 was presented in the form of exon-intron organization. A graphical format showing parallel (gene size) and vertical lines (introns) is presented for P450s showing similar gene structure. For the rest of the P450s, the number of exons and introns was shown. For ease of visual identity, the P450 name, protein ID (parenthesis) and model basidiomycete species name were presented with unique color. The protein size in amino acids and genetic location of P450 in the form of scaffold number are shown in the figure. (PDF)

Table S1 Comparative analysis of P450 monooxygenases in basidiomycete species, *Phanerochaete chrysosporium* (Pchr), *Phanerochaete carnososa* (Pcar), *Agaricus bisporus* (Abis), *Ganoderma* sp. (Gsp), *Postia placenta* (Ppla), and *Serpula lacrymans* (Slac). (PDF)

Table S2 Comparative analysis of P450 monooxygenases between *Tremella mesenterica* (mycoparasite) and *Cryptococcus neoformans* (animal pathogen/parasite). (PDF)

Table S3 Catalytic versatility of members of P450 families enriched in basidiomycete species, *Phanerochaete chrysosporium*, *Phanerochaete carnososa*, *Agaricus bisporus*, *Ganoderma* sp./*Ganoderma lucidum*, *Postia placenta* and *Serpula lacrymans*^a. (PDF)

Acknowledgments

The authors thank Dr. David Nelson, University of Tennessee, USA for providing *Ganoderma lucidum* P450 sequences and to Ms Barbara Bradley, Pretoria, South Africa for English language editing.

Author Contributions

Conceived and designed the experiments: K. Syed. Performed the experiments: K. Syed K. Shale NSP JT. Analyzed the data: K. Syed K. Shale NSP JT. Contributed reagents/materials/analysis tools: K. Syed K. Shale NSP JT. Wrote the paper: K. Syed K. Shale NSP JT.

References

- Ragauskas AJ, Williams CK, Davison BH, Britovsek G, Cairney J, et al. (2006) The path forward for biofuels and biomaterials. *Science* 311: 484–489.
- Ralph J, Lundquist K, Brunow G, Lu F, Kim H, et al. (2004) Lignins: Natural polymers from oxidative coupling of 4-hydroxyphenylpropanoids. *Phytochem Rev* 3: 29–60.
- Martínez AT, Speranza M, Ruiz-Dueñas EJ, Ferreira P, Camarero S, et al. (2005) Biodegradation of lignocelluloses: microbial, chemical, and enzymatic aspects of the fungal attack of lignin. *Int Microbiol* 8: 195–204.
- Martínez D, Larrondo LF, Putnam N, Gelpke MD, Huang K, et al. (2004) Genome sequence of the lignocellulose degrading fungus *Phanerochaete chrysosporium* strain RP78. *Nat Biotechnol* 22: 695–700.
- Martínez D, Challacombe J, Morgenstern I, Hibbett D, Schmolli M, et al. (2009) Genome, transcriptome, and secretome analysis of wood decay fungus *Postia placenta* supports unique mechanisms of lignocellulose conversion. *Proc Natl Acad Sci USA* 106: 1954–1959.
- Eastwood DC, Floudas D, Binder M, Majcherczyk A, Schneider P, et al. (2011) The plant cell wall-decomposing machinery underlies the functional diversity of forest fungi. *Science* 333: 762–765.
- Fernandez-Fueyo E, Ruiz-Dueñas EJ, Ferreira P, Floudas D, Hibbett DS, et al. (2012) Comparative genomics of *Ceriporiopsis subvernisporea* and *Phanerochaete chrysosporium* provide insight into selective ligninolysis. *Proc Natl Acad Sci USA* 109: 5458–5463.
- Floudas D, Binder M, Riley R, Barry K, Blanchette RA, et al. (2012) The Paleozoic origin of enzymatic lignin decomposition reconstructed from 31 fungal genomes. *Science* 336: 1715–1719.
- Chen S, Xu J, Liu C, Zhu Y, Nelson DR, et al. (2012) Genome sequence of the model medicinal mushroom *Ganoderma lucidum*. *Nature Commun* 3: 913.
- Suzuki H, MacDonald J, Syed K, Salamov A, Hori C, et al. (2012) Comparative genomics of the white-rot fungi, *Phanerochaete carmosa* and *P. chrysosporium*, to elucidate the genetic basis of the distinct wood types they colonize. *BMC Genomics* 13: 444. doi:10.1186/1471-2164-13-444.
- Binder M, Justo A, Riley R, Salamov A, Lopez-Giraldez F, et al. (2013) Phylogenetic and phylogenomic overview of the Polyporales. *Mycologia* doi:10.3852/13-003.
- Syed K, Nelson DR, Riley R, Yadav JS (2013) Genome-wide annotation and comparative genomics of cytochrome P450 monooxygenases (P450s) in the Polyporales species *Bjerkandera adusta*, *Ganoderma* sp. and *Phlebia brevipespora*. *Mycologia* 105: 1445–1455. doi:10.3852/13-002.
- Nelson DR (2013) A world of cytochrome P450s. *Phil. Trans. R. Soc. B. Biol. Sci.* 368: 1612–1613. doi:10.1098/rstb.2012.0430.
- Bernhardt R (2006) Cytochromes P450 as versatile biocatalysts. *J Biotechnol* 24: 128–145.
- Guengerich FP (1995) Cytochrome P450 proteins and potential utilization in biodegradation. *Environ Health Perspect* 103: 25–28.
- Guengerich FP (2002) Cytochrome P450 enzymes in the generation of commercial products. *Nat Rev Drug Discov* 1: 359–366.
- Guengerich FP (2006) Cytochrome P450s and other enzymes in drug metabolism and toxicity. *AAAPS J* 8: E101–E111.
- Urlacher VB, Eiben S (2006) Cytochrome P450 monooxygenases: Perspectives for synthetic application. *Trends Biotechnol* 24: 324–330.
- Syed K, Yadav JS (2012) P450 monooxygenases (P450ome) of the model white rot fungus *Phanerochaete chrysosporium*. *Crit Rev Microbiol* 38: 339–363.
- Ide M, Ichinose H, Wariishi H (2012) Molecular identification and functional characterization of cytochrome P450 monooxygenases from the brown-rot basidiomycete *Postia placenta*. *Arch Microbiol* 194: 243–53.
- Morin E, Kohler A, Baker AR, Foulongne-Oriol M, Lombard V, et al. (2012) Genome sequence of the button mushroom *Agaricus bisporus* reveals mechanisms governing adaptation to a humic-rich ecological niche. *Proc Natl Acad Sci USA* 109: 17501–6.
- Crešnar B, Petrič S (2011) Cytochrome P450 enzymes in the fungal kingdom. *Biochim Biophys Acta* 1814: 29–35.
- Hlavica P (2013) Evaluation of structural features in fungal cytochromes P450 predicted to rule catalytic diversification. *Biochim Biophys Acta* 1834: 205–220.
- Kelly SL, Kelly DE (2013) Microbial cytochrome P450: biodiversity and biotechnology, where do cytochrome P450 come from, what do they do and what can they do for us? *Phil. Trans. R. Soc. B. Biol. Sci.* 368: 1612–1613. doi:10.1098/rstb.2012.0476.
- Kelly SL, Lamb DC, Baldwin BC, Corran AJ, Kelly DE (1997) Characterization of *Saccharomyces cerevisiae* CYP61, sterol delta22-desaturase, and inhibition by azole antifungal agents. *J Biol Chem* 272: 9986–9988.
- Lepesheva GI, Waterman MR (2004) CYP51—the omnipotent P450. *Mol Cell Endocrinol* 215: 165–170.
- Melo NR, Moran GP, Warrilow AG, Dudley E, Smith SN, et al. (2008) CYP56 (Dit2p) in *Candida albicans*: characterization and investigation of its role in growth and antifungal drug susceptibility. *Antimicrob Agents Chemother* 52: 3718–3724.
- Sanglard D, Loper JC (1989) Characterization of the alkane-inducible cytochrome P450 (*P450alk*) gene from the yeast *Candida tropicalis*: identification of a new P450 gene family. *Gene* 76: 121–136.
- Nakayama N, Takemae A, Shoun H (1996) Cytochrome P450foxy, a catalytically self-sufficient fatty acid hydroxylase of the fungus *Fusarium oxysporum*. *J Biochem* 119: 435–440.
- Wen Y, Hatabayashi H, Arai H, Kitamoto HK, Yabe K (2005) Function of the cypX and moxY genes in aflatoxin biosynthesis in *Aspergillus parasiticus*. *Appl Environ Microbiol* 71: 3192–3198.
- Butchko RA, Plattner RD, Proctor RH (2006) Deletion analysis of *FUM* genes involved in tricarballic ester formation during fumonisin biosynthesis. *J Agric Food Chem* 54: 9398–9404.
- Kimura M, Tokai T, Takahashi-Ando N, Ohsato S, Fujimura M (2007) Molecular and genetic studies of fusarium trichothecene biosynthesis: pathways, genes, and evolution. *Biosci Biotechnol Biochem* 71: 2105–2123.
- Rojas MC, Hedden P, Gaskin P, Tudzynski B (2001) The P450-1 gene of *Gibberella fujikuroi* encodes a multifunctional enzyme in gibberellin biosynthesis. *Proc Natl Acad Sci U S A* 98: 5838–5843.
- Syed K, Doddapaneni H, Subramanian V, Lam YW, Yadav JS (2010) Genome-to-function characterization of novel fungal P450 monooxygenases oxidizing polycyclic aromatic hydrocarbons (PAHs). *Biochem Biophys Res Commun* 399: 492–7.
- Syed K, Porollo A, Lam YW, Yadav JS (2011) A fungal P450 (CYP5136A3) capable of oxidizing polycyclic aromatic hydrocarbons and endocrine disrupting alkylphenols: role of Trp¹²⁹ and Leu³²⁴. *PLoS One* 6(12): e28286. doi:10.1371/journal.pone.0028286.
- Syed K, Kattamuri C, Thompson TB, Yadav JS (2011) Cytochrome b² reductase-cytochrome b² as an active P450 redox enzyme system in *Phanerochaete chrysosporium*: atypical properties and *in vivo* evidence of electron transfer capability to CYP63A2. *Arch Biochem Biophys* 509: 26–32.
- Syed K, Porollo A, Lam YW, Grimmett PE, Yadav JS (2013) CYP63A2, a catalytically versatile fungal P450 monooxygenase capable of oxidizing higher-molecular-weight polycyclic aromatic hydrocarbons, alkylphenols, and alkanes. *Appl Environ Microbiol* 79: 2692–702.
- Chigu NL, Hirose S, Nakamura C, Teramoto H, Ichinose H, et al. (2010) Cytochrome P450 monooxygenases involved in anthracene metabolism by the white-rot basidiomycete *Phanerochaete chrysosporium*. *Appl Microbiol Biotechnol* 87: 1907–16.
- Kasai N, Ikushiro S, Shinkyo R, Yasuda K, Hirose S, et al. (2010) Metabolism of mono- and dichloro-dibenzo-*p*-dioxins by *Phanerochaete chrysosporium* cytochromes P450. *Appl Microbiol Biotechnol* 86: 773–80.
- Kasai N, Ikushiro S, Hirose S, Arisawa A, Ichinose H, et al. (2010) Atypical kinetics of cytochromes P450 catalysing 3'-hydroxylation of flavone from the white-rot fungus *Phanerochaete chrysosporium*. *J Biochem* 147: 117–25.
- Hirose S, Tazaki M, Hiratsuka N, Yanai S, Kabumoto H, et al. (2011) Insight into functional diversity of cytochrome P450 in the white-rot basidiomycete *Phanerochaete chrysosporium*: Involvement of versatile monooxygenase. *Biochem Biophys Res Commun* 407: 118–23.
- Ichinose H, Wariishi H (2012) Heterologous expression and mechanistic investigation of a fungal cytochrome P450 (CYP5150A2): Involvement of alternative redox partners. *Arch Biochem Biophys* 518: 8–15.
- Grigoriev IV, Cullen D, Goodwin SB, Hibbett D, Jeffries TW, et al. (2011) Fueling the future with fungal genomics. *Mycology* 2: 192–209.
- Mokali V, Park J, Fedorova-Abrams ND, Park B, Choi J, et al. (2012) Systematic and searchable classification of cytochrome P450 proteins encoded by fungal and oomycete genomes. *BMC Genomics* 13: 525. doi:10.1186/1471-2164-13-525.
- Nebert DW, Adesnik M, Coon MJ, Estabrook RW, Gonzalez FJ, et al. (1987) The P450 gene superfamily: Recommended nomenclature. *DNA* 6: 1–11.
- Nelson DR (2009) The cytochrome P450 homepage. *Hum Genomics* 4: 59–65.
- Tamura K, Peterson D, Peterson N, Stecher G, Nei M, et al. (2011) MEGA5: Molecular evolutionary genetics analysis using maximum likelihood, evolutionary distance, and maximum parsimony methods. *Mol Biol Evol* 28: 2731–2739.
- Rzhetsky A, Nei M (1992) A simple method for estimating and testing minimum evolution trees. *Mol Biol Evol* 9: 945–967.
- Zuckerandl E, Pauling L (1965) Evolutionary divergence and convergence in proteins. In: Bryson V, Vogel HJ, editors. *Evolving Genes and Proteins*. Academic Press, New York: 97–166.
- Nei M, Kumar S (2000) *Molecular Evolution and Phylogenetics*. Oxford University Press, New York.
- Saitou N, Nei M (1987) The neighbor-joining method: A new method for reconstructing phylogenetic trees. *Mol Biol Evol* 4: 406–425.
- Loftus BJ, Fung E, Roncaglia P, Rowley D, Amedeo P, et al. (2005) The genome of the basidiomycetous yeast and human pathogen *Cryptococcus neoformans*. *Science* 307: 1321–1324.
- Doddapaneni H, Yadav JS (2005) Microarray-based global differential expression profiling of P450 monooxygenases and regulatory proteins for signal transduction pathways in the white rot fungus *Phanerochaete chrysosporium*. *Mol Gen Genomics* 274: 454–466.
- Shary S, Kapich AN, Panisko EA, Magnuson JK, Cullen D, et al. (2008) Differential expression in *Phanerochaete chrysosporium* of membrane-associated proteins relevant to lignin degradation. *Appl Environ Microbiol* 74: 7252–7257.

55. Minami M, Suzuki K, Shimizu A, Hongo T, Sakamoto T, et al. (2009) Changes in the gene expression of the white rot fungus *Phanerochaete chrysosporium* due to the addition of atropine. *Biosci Biotech Biochem* 73: 1722–1731.
56. Vanden Wymelenberg A, Gaskell J, Mozuch M, Kersten P, Sabat G, et al. (2009) Transcriptome and secretome analyses of *Phanerochaete chrysosporium* reveal complex patterns of gene expression. *Appl Environ Microbiol* 75: 4058–4068.
57. Vanden Wymelenberg A, Gaskell J, Mozuch M, BonDurant SS, Sabat G, et al. (2011) Significant alteration of gene expression in wood decay fungi *Postia placenta* and *Phanerochaete chrysosporium* by plant species. *Appl Environ Microbiol* 77: 4499–4507.
58. MacDonald J, Doering M, Canam T, Gong YC, Guttman DS, et al. (2011) Transcriptome responses of the softwood-degrading white-rot fungus *Phanerochaete camosa* during growth on coniferous and deciduous wood. *Appl Environ Microbiol* 77: 3211–3218.

Copyright of PLoS ONE is the property of Public Library of Science and its content may not be copied or emailed to multiple sites or posted to a listserv without the copyright holder's express written permission. However, users may print, download, or email articles for individual use.