

広島大学学術情報リポジトリ

Hiroshima University Institutional Repository

Title	MUC1 in lung adenocarcinoma: cross-sectional genetic and serological study
Author(s)	Horimasu, Yasushi; Ishikawa, Nobuhisa; Tanaka, Sonosuke; Hirano, Chihiro; Iwamoto, Hiroshi; Ohshimo, Shinichiro; Fujitaka, Kazunori; Hamada, Hironobu; Hattori, Noboru; Kohno, Nobuoki
Citation	BMC Cancer , 17 : 263
Issue Date	2017-04-12
DOI	10.1186/s12885-017-3272-y
Self DOI	
URL	http://ir.lib.hiroshima-u.ac.jp/00047068
Right	© The Author(s). 2017 Open Access This article is distributed under the terms of the Creative Commons Attribution 4.0 International License (http://creativecommons.org/licenses/by/4.0/), which permits unrestricted use, distribution, and reproduction in any medium, provided you give appropriate credit to the original author(s) and the source, provide a link to the Creative Commons license, and indicate if changes were made. The Creative Commons Public Domain Dedication waiver (http://creativecommons.org/publicdomain/zero/1.0/) applies to the data made available in this article, unless otherwise stated.
Relation	



RESEARCH ARTICLE

Open Access



MUC1 in lung adenocarcinoma: cross-sectional genetic and serological study

Yasushi Horimasu¹, Nobuhisa Ishikawa^{1,3*}, Sonosuke Tanaka^{1,4}, Chihiro Hirano¹, Hiroshi Iwamoto¹, Shinichiro Ohshimo¹, Kazunori Fujitaka¹, Hironobu Hamada², Noboru Hattori¹ and Nobuoki Kohno¹

Abstract

Background: Mucin 1 (MUC1) contributes to the growth and metastasis of various cancers, including lung cancer, and *MUC1* gene length polymorphisms are associated with susceptibility to lung cancer and its prognosis. In contrast, the association between rs4072037, a single nucleotide polymorphism in *MUC1*, and lung cancer has not been well studied.

Methods: In the present study, we determined the rs4072037 genotype and measured serum KL-6 levels to evaluate the association between lung adenocarcinoma (ADC) and rs4072037 or serum KL-6 levels. DNA samples were available for 172 patients and these were included in the genomic analyses. In addition, 304 patients were included in the serum analyses. Furthermore, 276 healthy volunteers were included in both genomic and serum analyses.

Results: The rs4072037 genotype was not associated with susceptibility to lung ADC or its prognosis. Interestingly, serum KL-6 levels significantly differed according to rs4072037 genotype in those with T1 or T2 ($P < 0.001$), N0 or N1 ($P = 0.002$) and M0 ($P < 0.001$), but not in those with T3 or T4 ($P = 0.882$), N2 or N3 ($P = 0.616$) and M1a or M1b ($P = 0.501$). Serum KL-6 levels were significantly associated with the presence of lung ADC, as well as with its progression and prognosis, indicating the crucial involvement of KL-6/MUC1 in the development of lung cancer and its progression.

Conclusion: Based on these findings, we conclude that rs4072037 does not have a significant impact on the pathogenesis or prognosis of lung ADC, whereas serum KL-6 levels, which might reflecting the molecular length of MUC1, are significantly associated with lung ADC.

Keywords: KL-6, MUC1, rs4072037, Lung adenocarcinoma

Background

Lung cancer is one of the most common malignant tumors worldwide. Adenocarcinoma (ADC) is the most common histological type of lung cancer in the United States, Europe, and East Asia, including Japan [1]. Although novel therapeutic targets and molecular-targeted agents have been identified and applied in clinical settings, lung cancer remains the leading cause of cancer death in the majority of developed countries [2]. Thus, the identification of novel diagnostic biomarkers and potential therapeutic target molecules is urgently needed.

Several types of mucins, including mucin 1 (MUC1), are known to contribute to the growth and metastatic

properties of various tumors. In addition to their anti-adhesion functions, mucins can affect the transcriptional profile of various gene products involved in cancer cell invasion and metastasis by mediating signal-transduction [3, 4]. These findings indicate the potential utility of MUC1 as a diagnostic biomarker and/or therapeutic target in lung cancer. We have previously demonstrated that *MUC1* variable numbers of tandem repeats (VNTR) polymorphism was significantly associated with susceptibility to lung ADC and its prognosis [5]. However, it would be very difficult to identify *MUC1* gene length polymorphisms in clinical practice. Thus, in the current study, we focused on alternative potential biomarkers which can reflect the VNTR polymorphism and are more easily detectable in the clinical setting: rs4072037, a single nucleotide polymorphism (SNP) in the *MUC1* gene, and serum KL-6 levels.

rs4072037, a functional SNP in exon 2 of the *MUC1* gene, regulates splicing site selection during the post-

* Correspondence: nobuhisa_9@msn.com

¹Department of Molecular and Internal Medicine, 1-2-3 Kasumi, Minami-ku, Hiroshima 734-8551, Japan

³Department of Respiratory Medicine, Hiroshima Prefectural Hospital, 1-5-54 Ujina-Kanda, Minami-ku, Hiroshima 734-8530, Japan

Full list of author information is available at the end of the article



transcriptional regulation process [6]. It has also been reported that rs4072037 is in linkage disequilibrium with VNTR in *MUC1* [7]. Furthermore, several studies have reported an association between rs4072037 and susceptibility to gastric cancer [8–10]. Although no significant association has been demonstrated between rs4072037 and lung cancer, these previous studies suggest that rs4072037 may play a role in the development of lung ADC and its progression, and that rs4072037 may have utility as a diagnostic and/or prognostic biomarker in lung ADC.

We previously developed a murine IgG1 monoclonal antibody (mAb), designated KL-6, by immunizing a mouse with lung ADC VMRC-LCR cells [11]. The anti-KL-6 mAb recognizes sialylated carbohydrates attached to the core protein of MUC1 through the glycosylation process [12]. KL-6 has been well investigated as a useful diagnostic and prognostic biomarker for various interstitial lung diseases [11, 13, 14]. Additionally, we have demonstrated that KL-6 may be a prognostic biomarker for non-small cell lung cancer patients who have been treated with epidermal growth factor receptor tyrosine kinase inhibitors or surgical resection [15, 16]. While these findings were promising, the number of patients evaluated in these two studies was relatively small. Furthermore, the combined contribution of serum KL-6 with the other important prognostic predictors of lung ADC, such as *EGFR* gene mutation status [17], was not sufficiently evaluated in the previous studies.

The two aims of the present study were as follows: 1) to assess whether rs407247, a SNP in the *MUC1* gene, is associated with lung ADC development or prognosis, and 2) to assess whether KL-6, a carbohydrate associated with MUC1, improves the predictive power of the other predictive factors in patients with lung ADC. In this study, we evaluated the different rs4072037 genotypes and the serum levels of KL-6 in 354 patients with lung ADC and 276 healthy volunteers (HVs).

Methods

Patients and clinical samples

Five hundred and fifty-two patients with previously untreated lung ADC which was pathologically diagnosed and subsequently treated at Hiroshima University Hospital (Hiroshima, Japan) between April 2003 and June 2012 were included in this study (Fig. 1). The inclusion criteria, shown in Fig. 1, were almost identical to those described in our previous studies [15, 16, 18–21]. Disease staging in all 552 cases included computed tomography scans of the chest and abdomen, bone scintigraphy or F-18 fluorodeoxyglucose positron emission tomography, and magnetic resonance imaging of the head. The clinical or pathologic TNM stage was determined according to the 7th edition of the TNM classification of malignant tumors [22]. Two

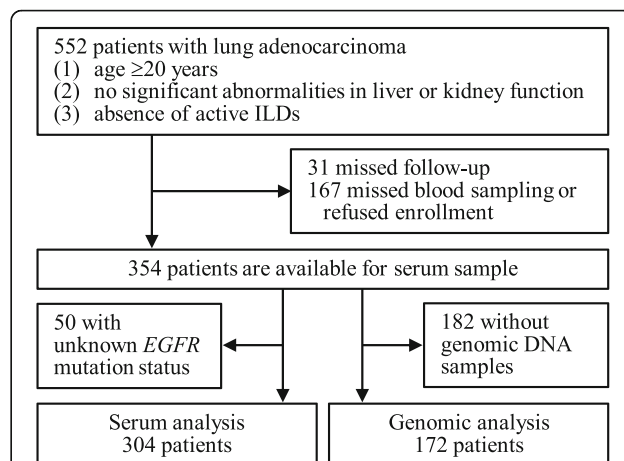


Fig. 1 Flow diagram of patient selection. The flow diagram illustrating the inclusion process of the patients with lung adenocarcinoma into the study. Three hundred and four patients were included into serum analysis and 172 patients were included into genomic analysis, with 122 patients included into both analysis

hundred and seventy-six HVs who attended health check-ups were also enrolled. The HVs had no history or current diagnosis of malignancy or apparent lung disease. Serum and peripheral venous whole blood samples were obtained from patients and HVs at enrollment with their written informed consents for using their samples and publishing the data. Serum samples were available for 354 of the 552 patients with ADC and for all 276 HVs. Among the 354 patients with ADC, *EGFR* gene mutation status was known for 304 patients that were included in the serum analyses. In addition, DNA samples were available for 172 patients and these were also included in the genomic analyses (Table 1). This study was approved by the Ethics Committee of Hiroshima University Hospital (IRB M33

Table 1 Clinical characteristics

	Patients with lung adenocarcinoma			Healthy volunteers
	All patients	Genomic analysis	Serum analysis	
Subject number	354	172	304	276
Age	65.9 ± 0.6	63.8 ± 0.9	66.6 ± 0.6	49.9 ± 0.4
Gender, Male / Female	195 / 159	95 / 77	164 / 140	228 / 48
Smoking, Yes / No	211 / 143	103 / 69	179 / 125	158 / 118
PS, ≤1 / ≥2	319 / 35	149 / 23	274 / 30	
<i>EGFR</i> , Mutant / Wild / ND	122 / 182 / 50	55 / 67 / 50	122 / 182 / 0	
T factor, ≤2 / ≥3	237 / 117	105 / 67	207 / 97	
N factor, ≤1 / ≥2	180 / 174	72 / 100	156 / 148	
M factor, 0 / 1	189 / 165	78 / 94	160 / 144	

PS performance status, ND not detected

and 326) and conducted in accordance with the ethical standards established by the Helsinki Declaration of 1975.

EGFR mutation status

EGFR mutation status was evaluated in 304 patients, for whom serum samples were available, in one of the following sample types: cytology liquid samples derived from bronchoscopy or thoracentesis, paraffin-embedded transbronchial lung biopsy samples, or surgically resected tumor tissues. To evaluate EGFR mutations, the peptide nucleic acid-locked nucleic acid polymerase chain reaction clamp test that detects the G719C, G719S, G719A, L858R, L861Q, and T790 M mutations and seven different exon 19 deletions was used, as previously described [23].

DNA preparation and rs4072037 genotyping

DNA was extracted from peripheral venous whole blood samples using the phenol-chloroform extraction and ethanol precipitation methods, as previously described [24–26]. The rs4072037 genotype was determined by real-time polymerase chain reaction (PCR) using a commercially available SNP genotyping assay (TaqMan SNP Genotyping Assay C 27532642–10; Life Technologies Corp. Carlsbad, CA, USA) and the Applied Biosystems 7500 Fast RT-PCR System (Life Technologies Corp.)

Measurement of serum KL-6 levels

Serum KL-6 levels were measured with a sandwich-type electrochemiluminescence immunoassay on a Picolumi 8220 Analyzer (Sanko Junyaku, Tokyo, Japan), as previously described [15, 16, 20, 27].

Statistical analysis

The numerical data were presented as the mean \pm standard error of the mean. The Mann–Whitney *U*-test was used to analyze data between 2 groups; for 3 or more groups, the Kruskal–Wallis test followed by multiple comparisons using rank sums was performed [28]. When dividing patients into clinical subgroups according to performance status (PS) or TNM factors, we performed receiver operating characteristic (ROC) analysis and determined the appropriate cut-off point to predict the prognosis of the patients. Survival analysis was performed using the log-rank test and Cox proportional hazards models. Concordance (C)-statistics were used to evaluate and compare the Cox models. To test for deviations from Hardy–Weinberg equilibrium, genotype frequencies were determined by direct counting and the chi-square test or Fisher's exact test were used as appropriate. Allelic frequencies were calculated based on the genotype frequencies, and the association between the minor G allele of rs4072037 and lung ADC was tested using the chi-square test or Fisher's exact test. All statistical analyses were performed using SPSS for Windows, version 18.0 (SPSS Inc. Chicago, USA).

Results

The rs4072037 genotype was not associated with susceptibility to lung ADC or its prognosis

To investigate the association between rs4072037 and susceptibility to lung ADC and/or its prognosis, we extracted DNA from peripheral venous blood samples and evaluated the presence of the rs4072037 genotype in 172 ADC patients and 276 HVs. The clinical characteristics of the studied subjects are shown in Table 1. The HVs were predominantly male and relatively young, compared with patients with lung ADC. The characteristics of patients with ADC included in the genomic analyses and those included in the serum analyses were similar. As shown in Table 2, the genotype distributions of rs4072037 were in Hardy–Weinberg equilibrium for both patients and HVs ($P = 0.891$ and $P = 0.979$, respectively). Unexpectedly, the genotype distributions of rs4072037 did not differ significantly between patients with ADC and HVs ($P = 0.933$). This result was consistent even when we limited the patients to those with advanced stage disease (Table 2). In addition, genotypes of rs4072037 showed no significant association with the risk of lung ADC both in dominant and recessive models (Table 3). According to the Kaplan–Meier analysis, the mean survival times for patients with AA, AG, and GG genotypes were 2416.8 ± 257.2 days, 1988.8 ± 232.5 days and 486.0 ± 206.8 days, respectively. Patients with the GG genotype tended to have a poorer prognosis than the other patients, although this was not statistically significant according to the log-rank test ($P = 0.173$). We also have to pay attention to the fact that there was only 4 patients with the GG genotype.

Serum KL-6 levels varied according to the rs4072037 genotype in HVs and patients with early stage ADC, but not in those with advanced disease

Next, we investigated the correlation between the rs4072037 genotype and serum KL-6 levels. As shown in Fig. 2a, there was a significant correlation between the rs4072037 genotype and serum KL-6 levels in HVs, which was in line with the results of previous studies [24, 29]. In patients with lung ADC, a significant correlation between the rs4072037 genotype and serum KL-6 levels was observed in those with T1 or T2 (Fig. 2b, $P < 0.001$), N0 or N1 (Fig. 2c, $P = 0.002$) and M0 (Fig. 2d, $P < 0.001$), but

Table 2 Genotype distributions of rs4072037

	AA (%)	AG (%)	GG (%)	HWE	chi-square
Healthy volunteers	186 (67.4)	82 (29.7)	8 (2.9)	0.979	ref.
All patients	116 (67.5)	52 (30.2)	4 (2.3)	0.891	0.933
limited to $\geq T3$	46 (68.7)	21 (31.3)	0 (0)	0.376	0.367
limited to $\geq N2$	65 (65.0)	33 (33.0)	2 (2.0)	0.772	0.761
limited to $\geq M1a$	62 (66.0)	28 (29.8)	4 (4.2)	0.968	0.811

HWE Hardy–Weinberg equilibrium

Table 3 rs4072037 genotype and the risk of lung adenocarcinoma

	Dominant model		Recessive model	
	OR (95% CI)	P value	OR (95% CI)	P value
All patients	0.998 (0.665–1.498)	0.991	0.798 (0.237–2.690)	0.484
limited to ≥T3	0.943 (0.531–1.675)	0.843	0.971 (0.951–0.991)	0.172
limited to ≥N2	1.113 (0.687–1.802)	0.664	0.684 (0.143–3.275)	0.477
limited to ≥M1a	1.067 (0.650–1.750)	0.798	1.489 (0.438–5.062)	0.363

OR odds ratio, CI confidence interval

not in those with T3 or T4 (Fig. 2b, $P = 0.882$), N2 or N3 (Fig. 2c, $P = 0.616$) and M1a or M1b (Fig. 2d, $P = 0.501$).

Serum KL-6 levels were significantly elevated in patients with lung ADC

To confirm the correlation between serum KL-6 levels and the presence of lung ADC, we compared serum KL-6 levels between 304 patients with ADC and 276 HVs. As shown in Fig. 3a, serum KL-6 levels were significantly

higher in patients with ADC than in HVs (880.8 ± 166.3 U/mL and 241.0 ± 5.2 U/mL, $P < 0.001$). In addition, high serum KL-6 levels were associated with poor PS ($P < 0.001$, Fig. 3b), and advanced T, N and M factors ($P < 0.001$, $P < 0.001$ and $P < 0.001$, respectively; Fig. 3b). On the other hand, serum KL-6 levels did not differ between patients with ADC with wild-type *EGFR* and mutant *EGFR* status (768.4 ± 170.4 U/mL and 1048.5 ± 327.7 U/mL, $P = 0.920$, Additional file 1).

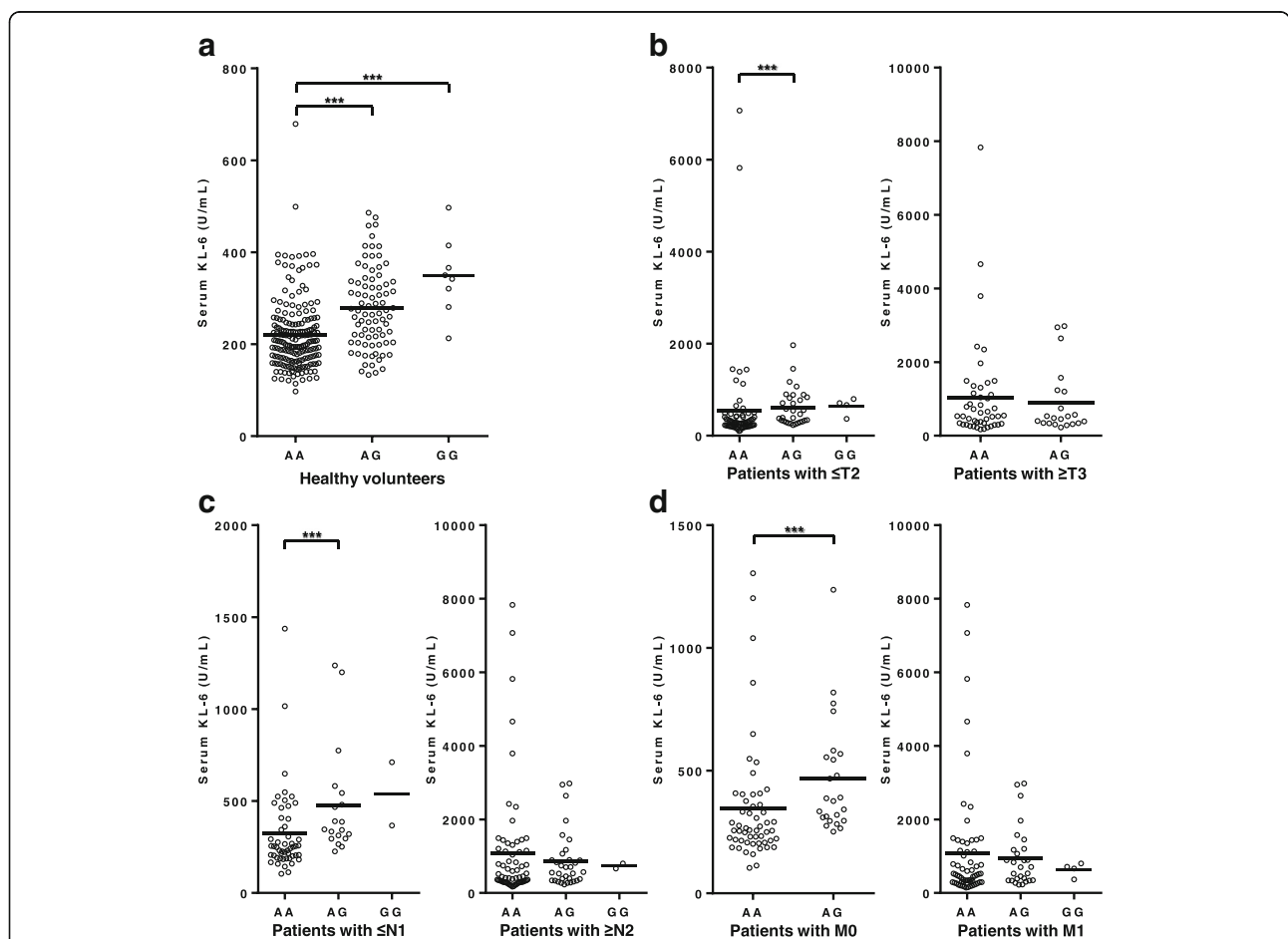
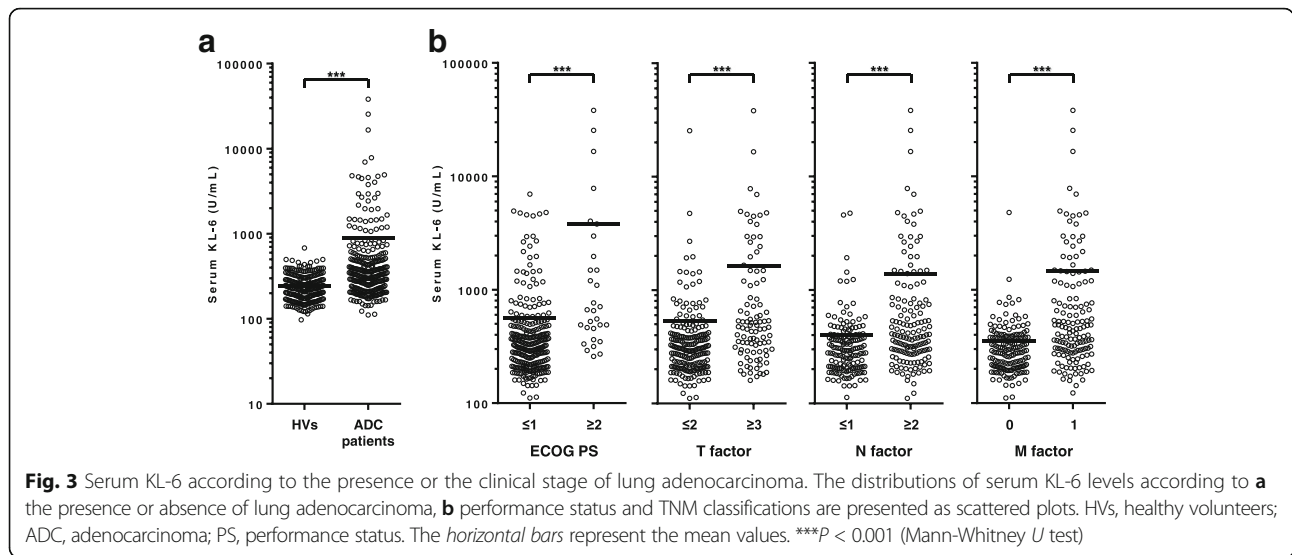


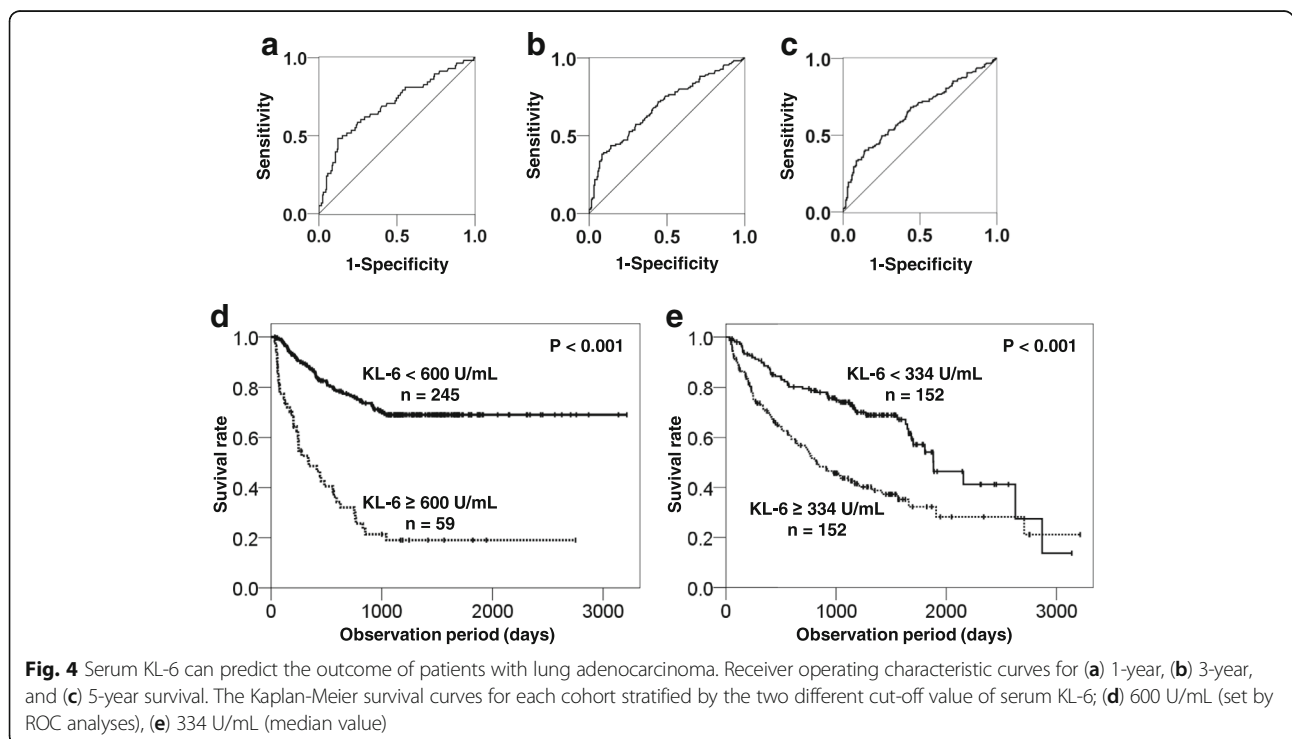
Fig. 2 Serum KL-6 according to the genotypes of rs4072037. The distributions of serum KL-6 levels according to the genotypes of rs4072037 **a** in healthy volunteers, **b** in the patients with T1 or T2 (left panel) and with T3 or T4 (right panel), **c** in the patients with N0 or N1 (left panel) and with N2 or N3 (right panel), and **d** in the patients with M0 (left panel) and with M1a or M1b (right panel). The horizontal bars represent the mean values. *** $P < 0.001$ (Mann-Whitney U test)



Serum KL-6 levels significantly correlated with survival in patients with lung ADC

We performed ROC analysis to evaluate the predictive ability of serum KL-6 in patients with ADC. The area under the curve for 1-year, 3-year, and 5-year survival was 0.698 (95% confidence interval [CI] = 0.618–0.778; $P < 0.001$, Fig. 4a), 0.686 (95% CI = 0.622–0.749; $P < 0.001$, Fig. 4b) and 0.656 (95% CI = 0.593–0.719; $P < 0.001$, Fig. 4c), respectively. The optimal cut-off value for serum KL-6 levels to discriminate between survivors and non-survivors was set at 600 U/mL, in accordance with the ROC

analyses. According to the Kaplan-Meier analysis, the mean survival times for patients with higher and lower serum KL-6 levels were 777.8 ± 117.7 days and 2807.6 ± 224.2 days, respectively. Patients with higher serum KL-6 levels had a significantly poorer prognosis than those with lower serum KL-6 levels, as tested by the log-rank test ($P < 0.001$, Fig. 4d). This result was confirmed when we perform additional log-rank test stratified by median value of serum KL-6 ($P < 0.001$, Fig. 4e). To further investigate the predictive ability of serum KL-6, we performed Cox proportional hazards regression analysis with



stepwise selection including both patients with mutant *EGFR* and those with wild type *EGFR*. The initial covariates included age, gender, smoking history, PS, *EGFR* mutation status, TNM classifications and serum KL-6 levels. As shown in Table 4A, there was a significant association between serum KL-6 levels and prognosis in patients with ADC, independent of the other covariates (PS, *EGFR* mutation status, and N and M factors). In addition, this result was not changed when we forcibly include age or gender into the covariates (data not shown). Furthermore, comparison of the C-statistics of each prediction model, with or without serum KL-6, demonstrated a significant increase in C-index with the addition of serum KL-6 to the other covariates (Table 4B).

Discussion

In the present study, no significant association was found between the rs4072037 genotype and susceptibility to lung ADC or its prognosis. rs4072037 genotype significantly affected serum KL-6 levels in patients with early stage ADC, but not in those with advanced disease. Furthermore, we demonstrated that serum KL-6 levels were significantly associated with the presence of lung ADC and its prognosis.

Although the *MUC1* VNTR polymorphism is associated with susceptibility to lung ADC and its prognosis [5], we found that rs4072037, a SNP in the *MUC1* gene, was not associated with susceptibility to lung ADC or with its prognosis. *MUC1* is known to inhibit E-cadherin-mediated cell-cell adhesion and integrin-mediated cell-extracellular matrix adhesion [30, 31]. It is also known that *MUC1* is involved in the growth and metastasis of various tumors, mainly due to its anti-adhesion and signal-transduction functions [3, 4]. We have previously reported that lung ADC cells expressed high levels of KL-6/*MUC1* [16, 32] and that an anti-KL-6 mAb induced capping of *MUC1*, thereby interfering with its anti-

adhesion function and inhibiting tumor proliferation [33]. On the basis of these previous findings, we hypothesized that the rs4072037 genotype in *MUC1* was associated with susceptibility to lung ADC and/or its prognosis. However, we failed to verify our hypothesis. The link between rs4072037 and the VNTR polymorphism, which was reported in 1996 [7], has actually been challenged by several recent studies. Imbert et al. reported that the *MUC1* VNTR polymorphism correlated with the rs4072037 genotype in only 80% of dry eye cases [34]. A similar result in patients with sarcoidosis was also reported by Shigemura et al. [35]. Based on these findings, we speculate that the VNTR polymorphism in *MUC1*, but not the rs4072037 genotype, has a significant impact on the pathogenesis and progression of lung ADC.

Interestingly, we found that the correlation between the rs4072037 genotype and serum KL-6 levels, which was previously reported [24, 29, 35], was significant in HVs and in patients with early stage ADC, but not in those with advanced ADC (Fig. 2). Serum KL-6 in patients with lung ADC, especially in those with advanced disease, is considered to be predominantly derived from lung cancer cells with a minor contribution from normal type II pneumocytes, which are known to be major source of serum KL-6 under normal conditions [16, 32]. In addition, serum KL-6 levels have been reported to be influenced by the molecular size of *MUC1* in healthy controls or in patients with sarcoidosis [35]. However, such a correlation has not been reported in patients with lung cancer. Therefore, we can speculate that the rs4072037 genotype has a significant impact on serum KL-6 derived from normal type II pneumocytes, but not on serum KL-6 derived from lung ADC cells. In cancer cells, alterations in the glycosylation properties of mucins, which encompass aberrant glycosylation of O-linked glycans, are known to play an important role in tumorigenesis, tumor progression, and metastasis [36–41]. Serum KL-6 levels in patients with lung ADC may be influenced by the aberrant glycosylation of O-linked glycans in *MUC1* and also by the depolarized expression pattern of *MUC1* in lung ADC [12, 16]. The influence of these epigenetic factors may diminish the association between the rs4072037 genotype and serum KL-6 levels in patients with advanced ADC.

In the present study, we successfully confirmed that serum KL-6 levels are independently associated with prognosis in patients with lung ADC. Although the correlation between serum KL-6 levels and disease progression or prognosis in patients with lung ADC has already been reported [11, 15, 16], the results from the present study are still of pivotal importance; we have demonstrated that serum KL-6 is a significant prognostic factor for lung ADC, independent of the other known prognostic factors, including *EGFR* mutation status [17]. Based

Table 4 Impact of serum KL-6 on the prognosis of lung adenocarcinoma

Variable	HR	95% CI.	P value
A. Multivariate Cox proportional hazards regression model			
PS, ordinal	1.72	1.35–2.20	<0.001
<i>EGFR</i> , wild type / mutant	2.43	1.62–3.64	<0.001
N factor, ordinal	1.23	1.04–1.45	0.018
M factor, yes / no	3.33	2.02–5.48	<0.001
Serum KL-6, ≥ 600 / < 600 U/mL	2.19	1.43–3.37	<0.001
B. Comparison of C statistics for each prediction model			
Prediction model	C index	95% CI.	P value
Covariates only	0.776	0.722–0.830	Ref.
Covariates + serum KL-6	0.790	0.736–0.843	0.036

"Covariates" in C statistics included PS, *EGFR* mutation status, and N and M factors. PS performance status

on these data, it is clear that KL-6/MUC1 plays an important role in tumor cell growth, proliferation, and metastasis. Therefore serum KL-6 may be an alternative and useful biomarker; it can reflect the VNTR polymorphism in MUC1 and is more easily detectable in the clinical setting.

This study had some limitations. First, the patient sample size was small, especially for the genomic analysis. Considering the low frequency of the rs4072037 G allele, we cannot exclude the possibility that the small number of patients harboring the G allele influenced the results. Second, age and sex distributions differed between patients and HVs. Despite these limitations, the results from our study are quite evocative and provide important insight into the crucial involvement of KL-6/MUC1 in the development of lung cancer and its progression.

Conclusions

In conclusion, we demonstrated that rs4072037, a SNP in *MUC1* gene, does not affect lung ADC development or its prognosis. We also demonstrated that serum KL-6 levels were significantly associated with the presence of lung ADC and its progression and prognosis, indicating the crucial role of KL-6/MUC1 in the development of lung cancer and its progression.

Additional files

Additional file 1: Serum KL-6 according to the presence or absence of *EGFR* gene mutation. (PDF 20 kb)

Additional file 2: The dataset supporting the conclusions of this article is available in this datasheet. (XLS 133 kb)

Abbreviations

ADC: Adenocarcinoma; CI: Confidence interval; HV: Healthy volunteer; mAb: monoclonal antibody; MUC1: Mucin 1; PCR: Polymerase chain reaction; PS: Performance status; ROC: Receiver operating characteristic; SNP: Single nucleotide polymorphism; VNTR: Variable numbers of tandem repeats

Acknowledgements

None.

Funding

This work was partly supported by Grants-in-Aid for Scientific Research from the Ministry of Education, Culture, Sports, Science and Technology of Japan. The funders had no role in study design, collection, analysis and interpretation of data and in writing the manuscript.

Availability of data and materials

The dataset supporting the conclusions of this article is included within the Additional file 2 "datasheet. XLS".

Authors' contributions

YH drafted the manuscript, performed serum measurements, genotyping and statistical analyses. NI, SO, HH, NH and NK conceived the study and helped drafting the manuscript. ST and CH performed a part of serum measurements and genotyping. HI and KF participated in study design, coordination, and recruitment of the participants. All authors participated in the process of revision and finalizing the manuscript. All authors read and approved the final manuscript.

Competing interests

All authors declare that they have no competing interest.

Consent for publication

Not applicable.

Ethics approval and consent to participate

This study was approved by the Ethics Committee of Hiroshima University Hospital (IRB M33 and 326) and conducted in accordance with the ethical standards established by the Helsinki Declaration of 1975. All participants presented their written informed consents for using their samples and publishing the data.

Previous presentation as congress abstract

The outline of this study have been previously presented at European Respiratory Society International Congress 2015 in Amsterdam, Netherlands (Abstract number: PA4237).

Publisher's Note

Springer Nature remains neutral with regard to jurisdictional claims in published maps and institutional affiliations.

Author details

¹Department of Molecular and Internal Medicine, 1-2-3 Kasumi, Minami-ku, Hiroshima 734-8551, Japan. ²Physical Analysis and Therapeutic Sciences, Institute of Biomedical and Health Sciences, Hiroshima University, 1-2-3 Kasumi, Minami-ku, Hiroshima 734-8551, Japan. ³Department of Respiratory Medicine, Hiroshima Prefectural Hospital, 1-5-54 Ujina-Kanda, Minami-ku, Hiroshima 734-8530, Japan. ⁴Department of Internal Medicine, Shobara City Saijo Citizens Hospital, 1339 Nakano, Saijo-cho, Shobara 729-5742, Japan.

Received: 26 May 2016 Accepted: 7 April 2017

Published online: 12 April 2017

Reference

- Devesa SS, Bray F, Vizcaino AP, Parkin DM. International lung cancer trends by histologic type: male: female differences diminishing and adenocarcinoma rates rising. *Int J Cancer*. 2005;117:294–9.
- Siegel RL, Miller KD, Jemal A. Cancer statistics, 2015. *CA Cancer J Clin*. 2015; 65:5–29.
- Kohlgraf KG, Gawron AJ, Higashi M, Meza JL, Burdick MD, Kitajima S, et al. Contribution of the MUC1 tandem repeat and cytoplasmic tail to invasive and metastatic properties of a pancreatic cancer cell line. *Cancer Res*. 2003; 63:5011–20.
- Hollingsworth MA, Swanson BJ. Mucins in cancer: protection and control of the cell surface. *Nat Rev Cancer*. 2004;4:45–60.
- Mitsuta K, Yokoyama A, Kondo K, Nakajima M, Arita K, Kohno N. Polymorphism of the MUC1 mucin gene is associated with susceptibility to lung adenocarcinoma and poor prognosis. *Oncol Rep*. 2005;14:185–9.
- Ligtenberg MJ, Gennissen AM, Vos HL, Hilkens J. A single nucleotide polymorphism in an exon dictates allele dependent differential splicing of episialin mRNA. *Nucleic Acids Res*. 1991;19:297–301.
- Pratt WS, Islam I, Swallow DM. Two additional polymorphisms within the hypervariable MUC1 gene: association of alleles either side of the VNTR region. *Ann Hum Genet*. 1996;60:21–8.
- Jia Y, Persson C, Hou L, Zheng Z, Yeager M, Lissowska J, et al. A comprehensive analysis of common genetic variation in MUC1, MUC5AC, MUC6 genes and risk of stomach cancer. *Cancer Causes Control*. 2010;21:313–21.
- Saeki N, Saito A, Choi IJ, Matsuo K, Ohnami S, Totsuka H, et al. A functional single nucleotide polymorphism in mucin 1, at chromosome 1q22, determines susceptibility to diffuse-type gastric cancer. *Gastroenterology*. 2011;140: 892–902.
- Hu N, Wang Z, Song X, Wei L, Kim BS, Freedman ND, et al. Genome-wide association study of gastric adenocarcinoma in Asia: a comparison of associations between cardia and non-cardia tumours. *Gut* 2015;in press
- Kohno N, Akiyama M, Kyoizumi S, Hakoda M, Kobuke K, Yamakido M. Detection of soluble tumor-associated antigens in sera and effusions using novel monoclonal antibodies, KL-3 and KL-6, against lung adenocarcinoma. *Jpn J Clin Oncol*. 1988;18:203–16.
- Seko A, Ohkura T, Ideo H, Yamashita K. Novel O-linked glycans containing 6'-sulfo-gal/GalNAc of MUC1 secreted from human breast cancer YMB-S

- cells: possible carbohydrate epitopes of KL-6(MUC1) monoclonal antibody. *Glycobiology*. 2012;22:181–95.
13. Kohno N. Serum marker KL-6/MUC1 for the diagnosis and management of interstitial pneumonitis. *J Med Investig*. 1999;46:151–8.
 14. Ishikawa N, Hattori N, Yokoyama A, Kohno N. Utility of KL-6/MUC1 in the clinical management of interstitial lung diseases. *Respir Investig*. 2012;50:3–13.
 15. Ishikawa N, Hattori N, Yokoyama A, Tanaka S, Nishino R, Yoshioka K, et al. Usefulness of monitoring the circulating Krebs von den Lungen-6 levels to predict the clinical outcome of patients with advanced nonsmall cell lung cancer treated with epidermal growth factor receptor tyrosine kinase inhibitors. *Int J Cancer*. 2008;22:2612–20.
 16. Tanaka S, Hattori N, Ishikawa N, Shoda H, Takano A, Nishino R, et al. Krebs von den Lungen-6 (KL-6) is a prognostic biomarker in patients with surgically resected nonsmall cell lung cancer. *Int J Cancer*. 2012;130:377–87.
 17. Suda K, Mitsudomi T. Role of EGFR mutations in lung cancers: prognosis and tumor chemosensitivity. *Arch Toxicol*. 2015;89:1227–40.
 18. Ishikawa N, Takano A, Yasui W, Inai K, Nishimura H, Ito H, et al. Cancer-test Inata J1, Hattori N, Yokoyama A, Ohshimo S, Doi M, Ishikawa N, Hamada H, Kohno N. Nis antigen lymphocyte antigen 6 complex locus K is a serologic biomarker and a therapeutic target for lung and esophageal carcinomas. *Cancer Res*. 2007;67:1601–11611.
 19. Inata J, Hattori N, Yokoyama A, Ohshimo S, Doi M, Ishikawa N, et al. Circulating KL-6/MUC1 mucin carrying sialyl Lewis x oligosaccharide is an independent prognostic factor in patients with lung adenocarcinoma. *Int J Cancer*. 2007;120:2643–9.
 20. Kawase S, Hattori N, Ishikawa N, Horimasu Y, Fujitaka K, Furonaka O, et al. Change in serum KL-6 level from baseline is useful for predicting life-threatening EGFR-TKIs induced interstitial lung disease. *Respir Res*. 2011;12:97.
 21. Tanaka S, Hattori N, Ishikawa N, Horimasu Y, Deguchi N, Takano A, et al. Interferon (alpha, beta and omega) receptor 2 is a prognostic biomarker for lung cancer. *Pathobiology*. 2012;79:24–33.
 22. Sobin LH, Gospodarowicz MK, Wittekind C, editors. *TNM classification of malignant tumors*. 7th ed. Chichester: Wiley; 2010. 310p.
 23. Nagai Y, Miyazawa H, Huqun, Tanaka T, Udagawa K, Kato M, et al. Genetic heterogeneity of the epidermal growth factor receptor in non-small cell lung cancer cell lines revealed by a rapid and sensitive detection system, the peptide nucleic acid-locked nucleic acid PCR clamp. *Cancer Res*. 2005;65:7276–82.
 24. Horimasu Y, Hattori N, Ishikawa N, Kawase S, Tanaka S, Yoshioka K, et al. Different MUC1 gene polymorphisms in German and Japanese ethnicities affect serum KL-6 levels. *Respir Med*. 2012;106:1756–64.
 25. Horimasu Y, Hattori N, Ishikawa N, Tanaka S, Bonella F, Ohshimo S, et al. Differences in serum SP-D levels between German and Japanese subjects are associated with SFTPD gene polymorphisms. *BMC Med Genet*. 2014;15:4.
 26. Horimasu Y, Ohshimo S, Bonella F, Tanaka S, Ishikawa N, Hattori N, Guzman J, Costabel U, et al. MUC5B promoter polymorphism in Japanese patients with idiopathic pulmonary fibrosis. *Respirology*. 2015;20:439–44.
 27. Ohshimo S, Yokoyama A, Hattori N, Ishikawa N, Hirasawa Y, Kohno N. KL-6, human MUC1 mucin, promotes proliferation and survival of lung fibroblasts. *Biochem Biophys Res Commun*. 2005;338:1845–52.
 28. Dunn OJ. Multiple comparisons using rank sums. *Technometrics*. 1964;6:241–52.
 29. Janssen R, Kruit A, Grutters JC, Ruven HJ, Gerritsen WB, van den Bosch JM. The mucin-1 568 adenosine to guanine polymorphism influences serum Krebs von den Lungen-6 levels. *Am J Respir Cell Mol Biol*. 2006;34:496–9.
 30. Wesseling J, van der Valk SW, Vos HL, Sonnenberg A, Hilkens J. Episialin (MUC1) overexpression inhibits integrin-mediated cell adhesion to extracellular matrix components. *J Cell Biol*. 1995;29:255–65.
 31. Wesseling J, van der Valk SW, Hilkens J. A mechanism for inhibition of E-cadherin-mediated cell-cell adhesion by the membrane-associated mucin episialin/MUC1. *Mol Biol Cell*. 1996;7:565–77.
 32. Kohno N, Kyoizumi S, Awaya Y, Fukuhara H, Yamakido M, Akiyama M. New serum indicator of interstitial pneumonitis activity. Sialylated carbohydrate antigen KL-6. *Chest*. 1989;96:68–73.
 33. Doi M, Yokoyama A, Kondo K, Ohnishi H, Ishikawa N, Hattori N, et al. Anti-tumor effect of the anti-KL-6/MUC1 monoclonal antibody through exposure of surface molecules by MUC1 capping. *Cancer Sci*. 2006;97:420–9.
 34. Imbert Y, Foulks GN, Brennan MD, Jumblatt MM, John G, Shah HA, Newton C, et al. MUC1 and estrogen receptor alpha gene polymorphisms in dry eye patients. *Exp Eye Res*. 2009;88:334–8.
 35. Shigemura M, Nasuhara Y, Konno S, Shimizu C, Matsuno K, Yamguchi E, et al. Effects of molecular structural variants on serum Krebs von den Lungen-6 levels in sarcoidosis. *J Transl Med*. 2012;10:111.
 36. Kim YJ, Varki A. Perspectives on the significance of altered glycosylation of glycoproteins in cancer. *Glycoconj J*. 1997;14:569–76.
 37. Häuselmann I, Borsig L. Altered tumor-cell glycosylation promotes metastasis. *Front Oncol*. 2014;4:28.
 38. Dimitroff CJ. Galectin-binding O-Glycosylations as regulators of malignancy. *Cancer Res*. 2015;75:3195–202.
 39. Burchell JM, Mungul A, Taylor-Papadimitriou J. O-linked glycosylation in the mammary gland: changes that occur during malignancy. *J Mammary Gland Biol Neoplasia*. 2001;6:355–64.
 40. Reticker-Flynn NE, Bhatia S. Aberrant glycosylation promotes lung cancer metastasis through adhesion to galectins in the metastatic niche. *Cancer Discov*. 2015;5:168–81.
 41. Jonckheere N, Van Seuning I. The membrane-bound mucins: from cell signalling to transcriptional regulation and expression in epithelial cancers. *Biochimie*. 2010;92:1–11.

Submit your next manuscript to BioMed Central and we will help you at every step:

- We accept pre-submission inquiries
- Our selector tool helps you to find the most relevant journal
- We provide round the clock customer support
- Convenient online submission
- Thorough peer review
- Inclusion in PubMed and all major indexing services
- Maximum visibility for your research

Submit your manuscript at
www.biomedcentral.com/submit

