



**Manchester
Metropolitan
University**

Bann, D and Wills, A and Cooper, Rachel and Hardy, R and Aihie, Sayer A and Adams, J and Kuh, D and NSHD Scientific and Data Collection Team (2013) *Birth weight and growth from infancy to late adolescence in relation to fat and lean mass in early old age: findings from the MRC National Survey of Health and Development*. International Journal of Obesity, 38. pp. 69-75. ISSN 0307-0565

Downloaded from: <http://e-space.mmu.ac.uk/623289/>

Version: Published Version

Publisher: Springer Nature

DOI: <https://doi.org/10.1038/ijo.2013.115>

Usage rights: Creative Commons: Attribution 3.0

Please cite the published version

<https://e-space.mmu.ac.uk>

PEDIATRIC ORIGINAL ARTICLE

Birth weight and growth from infancy to late adolescence in relation to fat and lean mass in early old age: findings from the MRC National Survey of Health and Development

D Bann¹, A Wills², R Cooper¹, R Hardy¹, A Aihie Sayer³, J Adams⁴ and D Kuh¹ on behalf of the NSHD Scientific and Data Collection Team

OBJECTIVE: High birth weight and greater weight gain in infancy have been associated with increased risk of obesity as assessed using body mass index, but few studies have examined associations with direct measures of fat and lean mass. This study examined associations of birth weight and weight and height gain in infancy, childhood and adolescence with fat and lean mass in early old age.

SUBJECTS: A total of 746 men and 812 women in England, Scotland and Wales from the MRC National Survey of Health and Development whose heights and weights had been prospectively ascertained across childhood and adolescence and who had dual energy X-ray absorptiometry measures at age 60–64 years.

METHODS: Associations of birth weight and standardised weight and height (0–2 (weight only), 2–4, 4–7, 7–11, 11–15, 15–20 years) gain velocities with outcome measures were examined.

RESULTS: Higher birth weight was associated with higher lean mass and lower android/gynoid ratio at age 60–64 years. For example, the mean difference in lean mass per 1 standard deviation increase in birth weight was 1.54 kg in males (95% confidence interval = 1.04, 2.03) and 0.78 kg in females (0.41, 1.14). Greater weight gain in infancy was associated with higher lean mass, whereas greater gains in weight in later childhood and adolescence were associated with higher fat and lean mass, and fat/lean and android/gynoid ratios. Across growth intervals greater height gain was associated with higher lean but not fat mass, and with lower fat/lean and android/gynoid ratios.

CONCLUSION: Findings suggest that growth in early life may have lasting effects on fat and lean mass. Greater weight gain before birth and in infancy may be beneficial by leading to higher lean mass, whereas greater weight gain in later childhood and adolescence may be detrimental by leading to higher fat/lean and android/gynoid ratios.

International Journal of Obesity (2014) 38, 69–75; doi:10.1038/ijo.2013.115

Keywords: abdominal obesity; growth; birth weight; body composition; muscle mass

INTRODUCTION

Fat and lean mass influence health and physical functioning. High fat mass is associated with a range of adverse health outcomes, including type 2 diabetes, hypertension, stroke, impaired physical functioning and higher rates of mortality.¹ Low lean mass, an indicator of low skeletal muscle mass, is associated with lower physical performance levels,^{2,3} adverse glucose metabolism⁴ and low bone mineral content.⁵ Low muscle mass is also an essential component of the most widely used definitions of sarcopenia,^{6,7} a condition of increasing public health concern.⁶

In addition to evidence that contemporaneous factors such as physical activity and diet influence adult fat and lean mass,^{8,9} there is growing evidence that factors such as growth during gestation, infancy, childhood and adolescence may also have a role. High birth weight¹⁰ and rapid weight gain in infancy^{11,12} have been consistently shown to be associated with increased risk of obesity in adulthood, measured by body mass index (BMI). However, studies using BMI are unable to elucidate whether associations reflect influences of growth on fat mass, lean mass or

both. For example, although an association between high birth weight and high BMI suggests an association with fat mass, some studies have found that birth weight is positively associated with lean mass, with either weak or no association found between birth weight and fat mass.^{13–15} Relatively few studies have examined associations between early growth and direct measures of fat and lean mass and most have been conducted in adolescents or young adults.^{14–23} This is despite the need to understand the factors that lead to reduced muscle mass and high fat mass in later adulthood when their health implications become clinically manifest. Previous studies have used limited measures of growth (typically spanning only infancy and childhood) and have focused exclusively on weight or BMI gain. Height gain may be also important for body composition, with recent findings in adolescents suggesting that weight and height gain may be independently associated with outcomes—greater weight gain in infancy was associated with higher fat mass in adolescence, whereas greater height gain in infancy was associated with lower fat mass.²¹ Most previous studies have also used relatively

¹MRC Unit for Lifelong Health and Ageing, Division of Population Health, University College London, London, UK; ²MRC CAITE, School of Social and Community Medicine, University of Bristol, Bristol, UK; ³Academic Geriatric Medicine, MRC Lifecourse Epidemiology Unit, University of Southampton, Southampton, UK and ⁴Clinical Radiology and Manchester Academic Health Science Centre (MAHSC), Manchester Royal Infirmary, University of Manchester, Manchester, UK. Correspondence: Dr D Bann, MRC Unit for Lifelong Health and Ageing, Division of Population Health, University College London, 33 Bedford Place, London WC1B 5JU, UK.

E-mail: d.bann@nshd.mrc.ac.uk

Received 1 February 2013; revised 12 April 2013; accepted 7 June 2013; accepted article preview online 19 June 2013; advance online publication, 16 July 2013

imprecise and inaccurate measures of body composition obtained by bioelectrical impedance or skin fold thickness^{24–26} and have only examined whole-body measures. Appendicular lean mass, which excludes bone and organ mass, is a more accurate indicator of skeletal muscle mass,^{6,27} and measures of abdominal fat distribution may be more closely related to health than whole-body fat mass.²⁸

The objectives of this study were to examine associations of birth weight, weight and height gain from infancy through to late adolescence with body composition in early old age using data from a large, nationally representative British birth cohort study—the Medical Research Council National Survey of Health and Development (NSHD). We hypothesised that birth weight would be positively associated with lean but not fat mass in early old age, and that weight gains in childhood and adolescence would be positively associated with both fat and lean mass.²⁹ As taller individuals tend to have more fat and lean mass,³⁰ we expected that measures of height gain would be positively associated with subsequent fat and lean mass due to the tracking of greater height and body size; and that these associations would be strongest when correlations between child and adult height were at their highest just before puberty and in late adolescence.³¹

MATERIALS AND METHODS

Study sample

The NSHD is a socially stratified sample of 5362 singleton births that took place in 1 week of March 1946 in mainland Britain,³² with regular follow-up across life. Between 2006 and 2010 (at 60–64 years), 2856 eligible study members (those known to be alive and with a known address in England, Scotland or Wales) were invited for an assessment at one of six clinical research facilities or to be visited by a research nurse at home.³³ Seven hundred seventy-eight individuals had died and invitations were not sent to those who were living abroad ($n = 570$), had previously withdrawn from the study ($n = 594$) or who had been lost to follow-up ($n = 564$). Of the 2856 invited, 2229 were assessed: 1690 attended a clinical research facility and the remaining 539 were seen at home.³⁴

Body composition measurement

During the visits to the clinical research facility, measures of body composition were obtained in the supine position using a QDR 4500 Discovery DXA scanner (Hologic Inc, Bedford, MA, USA); to optimise precision, scans were reviewed and centrally analysed (in Manchester) by a single operator (JA) using APEX 3.1 software (Hologic Inc., Bedford, MA, USA). Local quality assurance procedures were monitored centrally and cross-calibration between scanners was performed by scanning the European Spine Phantom at the start and end of the study.^{35,36} From these scans, measures of fat (whole body, android and gynoid) and lean mass (whole body and appendicular) were obtained and converted into kilograms. Two ratios were derived: android/gynoid fat mass (higher values indicating greater fat distribution in the abdomen than hips) and whole body fat/lean mass; both of which were multiplied by 100. Lean mass was defined as mass excluding fat and bone mass, and in all measures data from the head were excluded due to the high proportion of bone mass known to affect the accuracy of soft-tissue measures.³⁷ Routine anthropometric measures were taken during the clinic visit using standardised protocols by trained nurses.³³ In total, 1558 of the 1690 eligible participants had data available for height, weight and body composition, with missing data largely due to the presence of high-density artefacts in scans ($N = 74$), technical or logistical problems ($n = 37$), or participants laying outside the scan field ($n = 8$).

Measurement of weight and height

Birth weight, recorded to the nearest quarter of a pound, was extracted from birth records a few days after birth and converted into kilograms. Weight (kg) and height (cm) at 2, 4, 7, 11 and 15 years were measured by trained professionals using standardised protocols and self-reported at 20 years. Weight and height at each age were converted to sex-specific z-scores using the mean and standard deviation to aid comparisons of effect sizes at different ages.

Analytical strategy

Linear regression models were used to examine associations of birth weight and weight and height from 2 to 20 years with each body composition outcome. The birth weight models were additionally adjusted for adult height at 60–64 years, considered a potential mediator. Weight and height at each age were mutually adjusted in order to estimate their independent associations.

To examine associations with periods of weight and height gain after birth, conditional growth models were constructed. Weight and height velocities (kg or cm year^{-1}) were created using the exact age of measurement and converted into sex-specific z-scores. Separate models for each period (2–4, 4–7, 7–11, 11–15, 15–20 years) were constructed with weight and height velocity entered in the same model alongside weight and height z-score at the beginning of each period, using the maximum available sample in each period. Using weight as an example to highlight the interpretation of these models, the exposure is a standardised measure of weight change in a given interval on a theoretical distribution, which compares each individual against other cohort members with the same starting height and weight and the same height growth. As birth length was not measured, models examining weight gain from 0 to 2 years were adjusted for height at 2 years only. These conditional models were then further adjusted for adult height, a potential mediator. Analyses were conducted separately in males and females as sex differences in growth may underlie sexual dimorphism of adult body composition,³⁸ with tests of sex interaction conducted to formally test these differences. Non-linearity was assessed in conditional models by the inclusion of a quadratic term (for weight or height velocity).

Additional and sensitivity analyses

Additional analyses were conducted to examine whether associations were explained by socioeconomic position in childhood (paternal occupational class at 4 years), considered a potential confounder, and pubertal timing, a potential mediator (using prospectively ascertained examination of genitalia development and voice breaking status at 14 years (males) or age at menarche (females) as previously described).³⁹ These models were also restricted to those with valid data in all periods to examine the potential influence of missing data on our findings. Last, to examine whether the mutual adjustment of weight and height impacted on findings, analyses were conducted in which weight gain was not adjusted for height at the beginning of the period or height gain velocity (and vice-versa).

RESULTS

Sample description

The characteristics of the study sample at 60–64 years are shown in Table 1; the mean weights and heights at earlier ages are provided in Supplementary Table 1. As expected, sexual dimorphism of body composition was found. Despite both sexes having a similar mean BMI at 60–64 years, females had more fat and less lean mass (of the whole body and the limbs) than males,

Table 1. Characteristics of the study sample at age 60–64 years stratified by sex

	Mean (s.d.)		P-value ^a
	Males (n = 746)	Females (n = 812)	
Weight (kg)	85.27 (13.05)	72.34 (13.63)	<0.001
Height (cm)	175.29 (6.45)	162.17 (5.76)	<0.001
Body mass index (kg m^{-2})	27.74 (3.94)	27.51 (5.02)	0.31
Whole-body fat mass (kg)	23.79 (7.19)	29.00 (9.22)	<0.001
Android fat mass (kg)	2.51 (0.96)	2.33 (1.01)	<0.001
Gynoid fat mass (kg)	3.76 (1.01)	5.11 (1.46)	<0.001
Android/gynoid ratio	65.69 (15.35)	44.74 (12.36)	<0.001
Whole-body lean mass (kg)	53.69 (7.06)	37.26 (5.35)	<0.001
Appendicular lean mass (kg)	24.62 (3.40)	16.21 (2.54)	<0.001
Fat/lean ratio	44.09 (10.99)	77.21 (18.91)	<0.001

^aComparison of sexes using *t*-tests. Sample restricted to those with complete data on all body composition measures at age 60–64 years.

and males were on average heavier and taller, and had a higher android/gynoid ratio.

Birth weight and body composition at 60–64 years

Higher birth weight was associated with higher whole body and appendicular lean mass and a lower android/gynoid ratio but was not associated with fat mass (Table 2). These associations with birth weight remained after adjustment for adult height except for the android/gynoid ratio in females. The associations of birth weight with whole body and appendicular lean mass were stronger in males than females (*P*-value for sex interaction term = 0.01 in both cases).

Weight and height from 2 to 20 years and body composition at 60–64 years

Associations between height-adjusted weight and weight-adjusted height at each age from 2 to 20 years and each outcome are shown in Table 3. Higher weight from 2 to 20 years was associated with higher fat mass and whole body and appendicular lean mass, whereas higher weight from 11 to 20 years was associated with higher fat/lean and android/gynoid ratios. Height was generally not associated with fat mass, except for inverse associations at 15 years in males. Taller height at each age was associated with higher whole body and appendicular lean mass, and was associated with lower fat/lean and android/gynoid ratios at most ages in men and from 11 years onwards in women.

Conditional weight and height growth and body composition at 60–64 years

Figure 1 shows the associations between weight gain (adjusted for height gain in each respective interval and height and weight at the beginning of that interval) and each outcome (tabulated in Supplementary Table 2 model a). Greater weight gains across growth intervals from 4 to 20 years in males and from 2 to 20 years in females were associated with higher fat mass at age 60–64 years. Greater weight gains across growth intervals from 0 to 20 years were associated with higher whole body and appendicular lean mass. In both sexes, associations were weaker between 7 and 15 years than in other periods, whereas associations were stronger in males than in females from 0 to 2, 4 to 7 and 15 to 20 years. Greater weight gain in later childhood and adolescence (7–20 years) was associated with higher fat/lean mass and android/gynoid ratios. Similar overall patterns of association were found after adjustment for adult height (Supplementary Table 2 model b); for a given adult height, positive associations of early weight gain (0–4 years) with lean mass were partly attenuated, whereas positive associations with weight gain between 7 and 15 years in men and 7–11 years in women were strengthened.

Figure 2 shows the associations between height gain (adjusted for weight gain in each respective interval and height and weight

at the beginning of that interval) and each outcome (tabulated in Supplementary Table 3 model a). Across growth intervals, height gain was generally not associated with fat mass. Height gain across growth intervals was more consistently positively associated with lean mass, except at 11–15 years in males; the positive associations were strongest in males at 15–20 years and strongest in females at 11–15 years. There was a weak negative association in males from 11 to 15 years. Early height gain (up to age 4 years) and height gain from 15 to 20 years (in males) was associated with a lower android/gynoid ratio and height gain from 2 to 4 and 15 to 20 years was weakly associated with a lower fat/lean mass ratio; otherwise greater height gain was not associated with these ratios. The associations between height gain and all these outcomes were generally not maintained after adjustment for adult height (Supplementary Table 3 model b).

There was little evidence for departure from linearity in any of the models.

Additional and sensitivity analyses

Patterns of associations between conditional weight and height gain with each outcome were similar when additional adjustments were made for paternal occupational class and pubertal timing, and when restricted to a sample with valid growth data in all periods (Supplementary Tables 4 and 5 model a). Patterns of associations between conditional weight gain and outcomes were similar when no adjustment was made for baseline height and concurrent height gain (Supplementary Table 4 model b). However, associations between conditional height gain and outcomes differed where no adjustment was made for baseline weight and concurrent weight gain: in most periods, greater height gain was associated with higher fat and lean mass (Supplementary Table 5 model b).

DISCUSSION

Main findings

This study found that higher birth weight was associated with higher lean mass (more strongly in males than in females) and lower android/gynoid ratio at age 60–64 years. Greater weight gains in infancy and early childhood and in late adolescence were associated with higher lean mass, whereas greater gains in later childhood and adolescence were associated with higher fat mass, and higher fat/lean mass and android/gynoid ratios. These patterns remained after adjustment for adult height. Across most growth intervals, greater height gain was associated with higher lean mass and lower fat/lean and android/gynoid ratios; these associations were mainly working through final adult height.

Comparison with previous studies

This study extends previous studies that have generally been in younger cohorts, by examining the whole growth trajectory

Table 2. Mean differences in body composition outcomes per standard deviation increase in birth weight

Outcome	Males (n = 745)		Females (n = 808)		P#
	Unadjusted	Adjusted for adult height	Unadjusted	Adjusted for adult height	
Fat mass (kg)	0.29 (–0.22, 0.81), 0.26	–0.01 (–0.54, 0.52), 0.97	0.33 (–0.31, 0.97), 0.31	0.09 (–0.56, 0.74), 0.79	0.93
Lean mass (kg)	1.54(1.04, 2.03), <0.01	0.62(0.17, 1.07), 0.01	0.78(0.41, 1.14), <0.01	0.29 (–0.05, 0.63), 0.09	0.01
Appendicular lean mass (kg)	0.78(0.54, 1.02), <0.01	0.33(0.11, 0.54), <0.01	0.38(0.21, 0.55), <0.01	0.15 (–0.01, 0.31), 0.07	0.01
Fat/lean ratio	–0.73 (–1.52, 0.06), 0.07	–0.53 (–1.35, 0.29), 0.21	–0.92 (–2.23, 0.38), 0.17	–0.58 (–1.92, 0.75), 0.39	0.81
Android/gynoid ratio	–1.62 (–2.72, –0.52), <0.01	–1.22 (–2.36, –0.09), 0.04	–0.87 (–1.72, –0.02), 0.05	–0.68 (–1.55, 0.19), 0.13	0.29

Notes: cells show β (95% confidence intervals), and *P*-values; P#, *P*-value for sex interaction term (tested in unadjusted model).

Table 3. Mean differences in body composition outcomes at age 60–64 years per standard deviation increase in weight and height from 2 to 20 years. Height and weight at each age are mutually adjusted

Outcome and age (year) of weight and height	Weight		Height	
	Males	Females	Males	Females
Fat mass (kg)				
2	0.61 (–0.01, 1.22), 0.05	0.31 (–0.46, 1.08), 0.44	0.35 (–0.26, 0.97), 0.26	0.56 (–0.21, 1.33), 0.15
4	0.63 (–0.04, 1.30), 0.06	1.29 (0.41, 2.17), <0.01	–0.19 (–0.86, 0.48), 0.57	0.09 (–0.77, 0.95), 0.83
7	1.76 (0.93, 2.58), <0.01	1.19 (0.25, 2.13), 0.01	–0.60 (–1.42, 0.22), 0.15	0.85 (–0.10, 1.80), 0.08
11	2.44 (1.71, 3.17), <0.01	2.56 (1.64, 3.48), <0.01	–0.62 (–1.35, 0.12), 0.10	0.04 (–0.88, 0.95), 0.94
15	3.03 (2.18, 3.88), <0.01	2.88 (2.11, 3.65), <0.01	–1.29 (–2.14, –0.44), <0.01	0.58 (–0.19, 1.35), 0.14
20	3.12 (2.49, 3.75), <0.01	3.63 (2.91, 4.34), <0.01	–0.46 (–1.09, 0.18), 0.16	–0.34 (–1.05, 0.38), 0.35
Lean mass (kg)				
2	2.03 (1.46, 2.59), <0.01	0.91 (0.48, 1.34), <0.01	0.99 (0.42, 1.55), <0.01	0.94 (0.51, 1.37), <0.01
4	2.06 (1.45, 2.66), <0.01	1.53 (1.05, 2.01), <0.01	0.87 (0.26, 1.48), 0.01	0.72 (0.24, 1.19), <0.01
7	2.98 (2.28, 3.68), <0.01	1.50 (1.00, 2.01), <0.01	0.72 (0.03, 1.42), 0.04	1.23 (0.72, 1.74), <0.01
11	2.29 (1.64, 2.94), <0.01	1.42 (0.92, 1.93), <0.01	1.43 (0.78, 2.07), <0.01	1.20 (0.70, 1.70), <0.01
15	2.82 (2.06, 3.59), <0.01	1.86 (1.45, 2.27), <0.01	0.56 (–0.20, 1.33), 0.15	1.57 (1.16, 1.98), <0.01
20	3.78 (3.29, 4.28), <0.01	2.51 (2.14, 2.88), <0.01	1.50 (1.00, 2.00), <0.01	1.15 (0.79, 1.52), <0.01
Appendicular lean mass (kg)				
2	0.96 (0.69, 1.24), <0.01	0.46 (0.26, 0.66), <0.01	0.57 (0.30, 0.85), <0.01	0.44 (0.23, 0.64), <0.01
4	1.05 (0.76, 1.34), <0.01	0.72 (0.50, 0.95), <0.01	0.47 (0.18, 0.77), <0.01	0.40 (0.18, 0.62), <0.01
7	1.43 (1.09, 1.76), <0.01	0.72 (0.48, 0.95), <0.01	0.42 (0.09, 0.76), 0.01	0.61 (0.37, 0.85), <0.01
11	1.05 (0.75, 1.36), <0.01	0.68 (0.45, 0.92), <0.01	0.77 (0.46, 1.08), <0.01	0.58 (0.34, 0.82), <0.01
15	1.25 (0.87, 1.62), <0.01	0.88 (0.69, 1.07), <0.01	0.34 (–0.04, 0.71), 0.08	0.77 (0.58, 0.96), <0.01
20	1.68 (1.44, 1.93), <0.01	1.16 (0.99, 1.33), <0.01	0.86 (0.61, 1.10), <0.01	0.59 (0.42, 0.77), <0.01
Fat/lean ratio				
2	–0.52 (–1.48, 0.44), 0.29	–1.14 (–2.74, 0.45), 0.16	–0.09 (–1.04, 0.87), 0.86	–0.64 (–2.22, 0.95), 0.43
4	–0.46 (–1.48, 0.56), 0.37	–0.24 (–2.03, 1.56), 0.80	–1.11 (–2.13, –0.10), 0.03	–0.90 (–2.66, 0.87), 0.32
7	0.67 (–0.62, 1.95), 0.31	–0.40 (–2.38, 1.58), 0.69	–1.61 (–2.89, –0.33), 0.01	–0.09 (–2.09, 1.91), 0.93
11	2.38 (1.22, 3.53), <0.01	3.41 (1.48, 5.34), <0.01	–2.16 (–3.32, –1.01), <0.01	–2.27 (–4.19, –0.35), 0.02
15	3.07 (1.71, 4.43), <0.01	3.38 (1.72, 5.03), <0.01	–2.71 (–4.06, –1.35), <0.01	–1.71 (–3.37, –0.05), 0.04
20	2.50 (1.47, 3.52), <0.01	3.92 (2.38, 5.46), <0.01	–2.03 (–3.07, –0.99), <0.01	–3.12 (–4.66, –1.58), <0.01
Android/gynoid ratio				
2	–0.55 (–1.86, 0.76), 0.41	–0.74 (–1.80, 0.32), 0.17	–1.77 (–3.08, –0.46), 0.01	0.42 (–0.63, 1.48), 0.43
4	–0.33 (–1.75, 1.09), 0.65	–0.10 (–1.27, 1.06), 0.86	–1.96 (–3.37, –0.54), 0.01	–0.96 (–2.11, 0.19), 0.10
7	0.62 (–1.15, 2.40), 0.49	0.45 (–0.83, 1.73), 0.49	–1.58 (–3.34, 0.18), 0.08	–1.19 (–2.48, 0.10), 0.07
11	2.16 (0.58, 3.75), 0.01	2.35 (1.11, 3.59), <0.01	–2.64 (–4.23, –1.05), <0.01	–1.88 (–3.12, –0.65), <0.01
15	3.16 (1.29, 5.04), <0.01	1.81 (0.76, 2.87), <0.01	–2.58 (–4.46, –0.71), 0.01	–1.37 (–2.43, –0.31), 0.01
20	2.28 (0.84, 3.73), <0.01	2.33 (1.30, 3.36), <0.01	–2.81 (–4.27, –1.35), <0.01	–2.05 (–3.08, –1.02), <0.01

Notes: cells show β (95% confidence intervals), and *P*-values; sample sizes in the different periods were (male/female): 2 (593/627), 4 (653/700), 7 (624/679), 11 (628/679), 15 (582/623), 20 (601/682).

(including late adolescence) and including appendicular lean mass and fat/lean and android/gynoid ratios as additional outcomes. Our finding of an association between higher birth weight and higher lean mass is consistent with reports from younger cohort studies.^{14,40} Our study shows that these associations persist into early old age and are also seen for appendicular lean mass and lower android/gynoid ratios.

In contrast with this study, previous studies in younger cohorts have reported positive associations between weight or BMI gain in infancy with fat mass.^{16,21,22} Our finding that weight gain in infancy and early childhood was more strongly associated with lean than fat mass is consistent with the only other study in early old age (56–70 years), which found that infant BMI gain was associated with adult lean mass, whereas BMI gain in childhood was associated with adult fat and lean mass.²⁹

Findings from this study are consistent with previous findings from the NSHD at earlier ages using related measures of adiposity. For example, birth weight was positively associated with BMI and inversely associated with waist/hip ratio (females only) at 43 years (after adjustment for contemporaneous BMI),⁴¹ and greater weight gain in infancy was associated with higher BMI at 43 years.¹² Findings from the present study suggest that these associations with obesity may primarily reflect an influence of weight gain on lean and not fat mass. Our findings are also consistent with our previous findings showing benefits of prenatal and prepubertal growth on muscle strength and physical performance at 53 years.^{42–44}

Explanation of findings

As the number of muscle fibres in adulthood is thought to be largely determined by birth,^{45–47} positive associations between birth weight and lean mass may reflect the acquisition of greater numbers of muscle fibres in utero (hyperplasia), which then track into adulthood. Alternatively, those of higher birth weight may have gone on to acquire more lean mass after birth (via hypertrophy). Positive associations of birth weight and early weight gain (0–4 years) with lean mass were partly explained by adult height—such that those who gained more weight went on to become taller adults with longer bones and longer muscles of greater mass. The persistence of positive associations after adjustment suggests that greater birth weight and weight gain also led to higher lean mass through other mechanisms such as the development of greater muscle width (the number of adjacent muscle fibres and/or their thickness), and/or the number of muscle fibres per unit area of muscle.⁴⁵

Weight gains in later childhood and adolescence were more strongly associated than weight gain in infancy with fat mass in early old age. Later childhood and adolescence may be periods in which fat mass accrual is greater than in infancy^{38,48,49} and/or where changes in weight are related to formation of physical activity and diet patterns, which track into adulthood^{50,51} leading to subsequent gains in fat mass.

Higher birth weight was associated with lower android/gynoid ratios, whereas greater gains in weight in later childhood

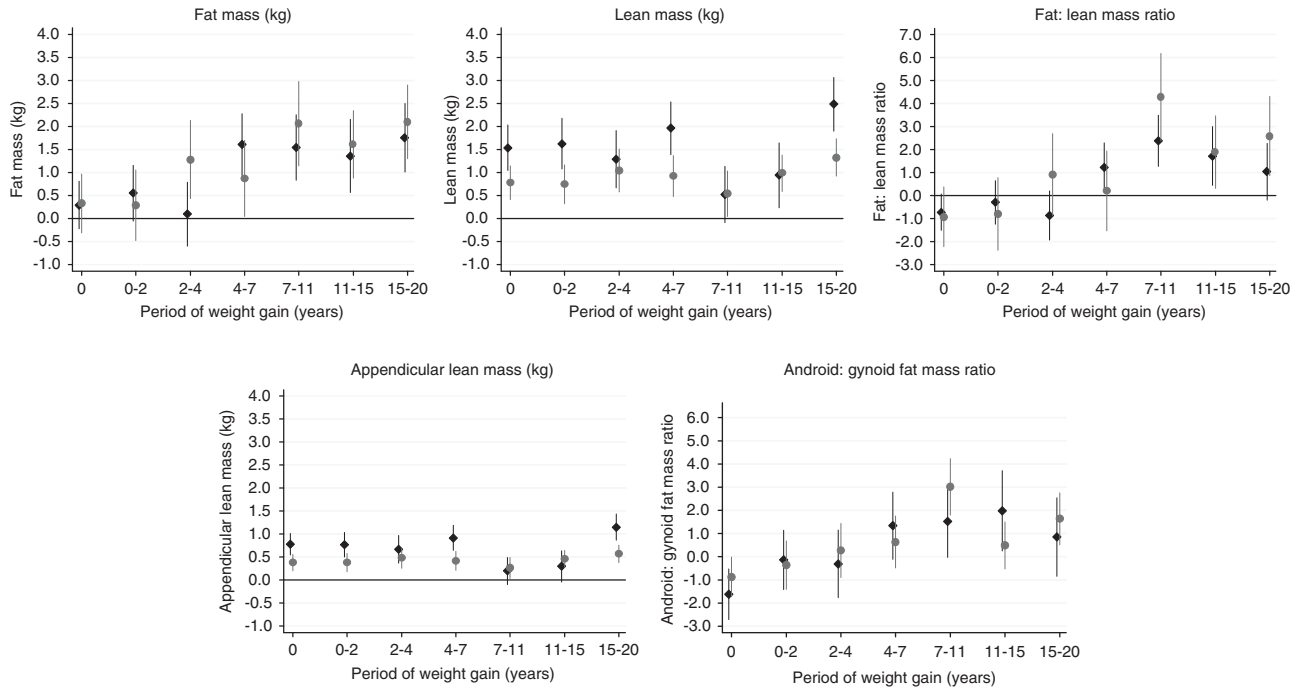


Figure 1. Mean differences in body composition outcomes at age 60–64 years (with 95% confidence intervals) per standard deviation increase in birth weight and weight gain velocity (adjusted for weight and height at the beginning of each period and concurrent height gain velocity). Notes: males = black diamonds; females = gray/red circles; sample sizes in the different periods were (male/female): birth weight (745/808); 0–2 (592/625); 2–4 (561/580); 4–7 (574/615); 7–11 (573/622); 11–15 (543/588); 15–20 (500/555); associations with weight gain from 0 to 2 years were adjusted for height at 2 years only. The full colour version of this figure is available at *International Journal of Obesity* online.

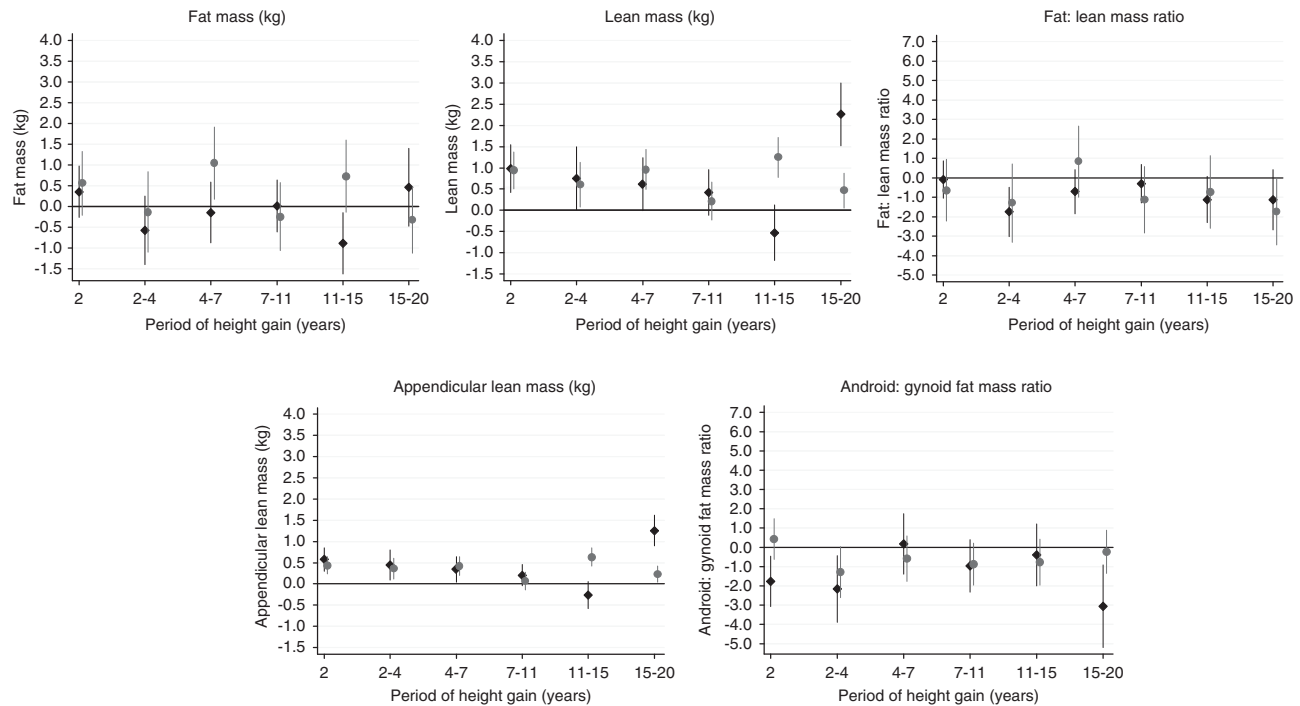


Figure 2. Mean differences in body composition outcomes at age 60–64 years (with 95% confidence intervals) per standard deviation increase in height at age 2 and height gain velocity (adjusted for height and weight at the beginning of each period and concurrent weight gain velocity). Notes: males = black diamonds; females = gray/red circles; sample sizes in the different periods were (male/female): 2 (593/627); 2–4 (561/580); 4–7 (574/615); 7–11 (573/622); 11–15 (543/588); 15–20 (500/555); associations with height at 2 years were adjusted for weight at 2 years only. The full colour version of this figure is available at *International Journal of Obesity* online.

and adolescence were associated with higher android/gynoid and fat/lean ratios. These associations were driven by the differing strengths of associations with fat and lean mass, and with android and gynoid fat mass (shown in Supplementary Table 6).

Height gain was generally not associated with fat mass and more consistently positively associated with lean mass. This probably reflects the stronger correlation between adult height and lean mass as associations between height gain and all outcomes generally operated through adult height.

It is important to note that associations between growth and body composition in adulthood may differ in younger cohorts that have experienced higher rates of childhood obesity—in these cohorts weight gain in infancy may predominantly reflect gains in fat mass. In older cohorts, as shown in this study, associations between infant weight gain and fat mass are likely to be weaker because weight gain in infancy may predominantly reflect gains in lean mass. Older cohorts are, however, important resources for examining the influence of growth on health-related outcomes in adulthood; findings from this study can be used to help interpret findings from other existing adult cohort studies, most of which have examined associations with BMI and not direct measures of body composition.

Differences in pubertal maturation could feasibly explain many of the observed associations, as greater weight gain in infancy and early childhood has been associated with earlier pubertal maturation, which in turn has been associated with greater fat mass in females⁵² and greater lean mass in males.⁵³ However, the associations between weight gain and body composition outcomes found in this study were not explained by pubertal timing, potentially suggesting that there may be direct effects of weight gain on subsequent fat and lean mass. The associations were also not explained by childhood socioeconomic position, a potential confounder.

Strengths and limitations

A major strength of this study is the use of detailed measures of whole body and regional body fat and lean mass obtained using DXA. Prospectively ascertained measures of weight and height gain spanning infancy, childhood and adolescence were used, and analyses conducted enabled associations with different periods of growth to be compared, and the separate associations of weight and height gain to be examined. Prospective measures of potential confounders and mediators were available in this study.

Although the measures of growth used in this study were extensive, other measures may be more closely related to body composition outcomes. For example, birth weight is only a crude indicator of prenatal growth that may predominantly reflect growth in the third trimester of pregnancy,⁵⁴ and evidence from the Dutch 'hunger winter' study of 1944–1945 suggests that impaired growth in the first two trimesters of pregnancy, but not the third, is associated with high subsequent fat mass.^{55,56} Weight gain in the first weeks or months of infancy has also been found to be particularly important for subsequent fat mass,^{16,57} but only weight gain between 0 and 2 years was available for investigation in this study.

Although missing data may have introduced bias, similar patterns of associations were found when comparing analyses run on maximum available samples with those restricted to the sample with valid growth data in all periods, suggesting that this source of bias is unlikely to have a substantial impact on findings. In addition, further analyses showed there was little difference in weight and height across the periods used when comparing participants with and without full body composition data (data available on request).

Implications

Findings from this study suggest that growth in early life may have lasting effects on fat and lean mass, and highlight the

opportunities that early-life interventions may have in preventing high fat mass and low lean mass in early old age. Our results suggest that greater weight gain in early life (before birth, in infancy and early childhood) may be beneficial by leading to higher lean mass and lower android/gynoid ratios, whereas greater weight gain in later childhood and adolescence may be detrimental by leading to higher fat/lean and android/gynoid ratio. A higher fat/lean ratio has been associated with poorer physical functioning,⁵⁸ and a higher android/gynoid ratio associated with worse glucose metabolism.⁵⁹ Future studies are needed to examine the factors that promote healthy weight gain, which may be comprised of greater lean than fat mass acquisition.

Across growth intervals greater height gain tended to be associated with lower fat/lean and android/gynoid ratios. These results support the suggestion that concurrent height and weight gain may have contrasting effects on subsequent body composition outcomes,²¹ although given the lack of research in this area, our findings require replication.

CONCLUSIONS

This study found characteristics of the growth trajectory from birth to late adolescence were associated with body composition measures in early old age. Findings suggest that greater early weight and height gain lead to greater lean mass, protecting against the detrimental effects of declines in muscle mass that occur in later life, and have additional benefits by leading to a lower android/gynoid ratio. In contrast, greater weight gain in later childhood and adolescence leads to higher fat/lean and android/gynoid ratios, which could have detrimental effects on health and physical performance in adulthood.

CONFLICT OF INTEREST

The authors declare no conflict of interest.

ACKNOWLEDGEMENTS

We are grateful to NSHD study members who took part in this latest data collection for their continuing support. We thank members of the NSHD scientific and data collection team at the following centres: MRC Unit for LHA, MRC Lifecourse Epidemiology Unit, Southampton; MRC Human Nutrition Research, Cambridge; Wellcome Trust (WT) Clinical Research Facility (CRF) Manchester and the Department of Clinical Radiology at the Central Manchester University Hospitals NHS Foundation Trust; WTCRF and Medical Physics at the Western General Hospital in Edinburgh; WTCRF and the Department of Nuclear Medicine at University Hospital Birmingham; WTCRF and the Department of Nuclear Medicine at University College London Hospital; CRF and the Department of Medical Physics at the University Hospital of Wales; CRF and Twin Research Unit at St Thomas' Hospital London. We also thank members of the NSHD bone and muscle project management group (including Ann Prentice, Kate Ward and Cyrus Cooper).

REFERENCES

- Dixon JB. The effect of obesity on health outcomes. *Mol Cell Endocrinol* 2010; **316**: 104–108.
- Visser M, Deeg DJ, Lips P, Harris TB, Bouter LM. Skeletal muscle mass and muscle strength in relation to lower-extremity performance in older men and women. *J Am Geriatr Soc* 2000; **48**: 381–386.
- Woo J, Leung J, BMI Kwok T. body composition, and physical functioning in older adults. *Obesity* 2007; **15**: 1886–1894.
- Srikanthan P, Hevener AL, Karlamangla AS. Sarcopenia Exacerbates Obesity-Associated Insulin Resistance and Dysglycemia: Findings from the National Health and Nutrition Examination Survey III. *PLoS One* 2010; **5**: e10805.
- Hla MM, Davis JW, Ross PD, Wasnich RD, Yates AJ, Ravn P *et al*. Multicenter study of the influence of fat and lean mass on bone mineral content: evidence for differences in their relative influence at major fracture sites. *Am J Clin Nutr* 1996; **64**: 354–360.
- Cruz-Jentoft AJ, Baeyens JP, Bauer JM, Boirie Y, Cederholm T, Landi F *et al*. Sarcopenia: European consensus on definition and diagnosis: Report of the European Working Group on Sarcopenia in Older People. *Age Ageing* 2010; **39**: 412–423.
- Cederholm TE, Bauer JM, Boirie Y, Schneider SM, Sieber CC, Rolland Y. Toward a Definition of Sarcopenia. *Clin Geriatr Med* 2011; **27**: 341–353.
- Butland B, Jebb S, Kopelman P, McPherson K, Mardell J, Parry V. *Foresight: Tackling Obesity: Future Choices—Project report*. Government Office for Science: London, UK, 2007.

- 9 Rennie MJ, Wackerhage H, Spangenburg EE, Booth FW. Control of the size of the human muscle mass. *Annu Rev Physiol* 2004; **66**: 799–828.
- 10 Yu ZB, Han SP, Zhu GZ, Zhu C, Wang XJ, Cao XG et al. Birth weight and subsequent risk of obesity: a systematic review and meta-analysis. *Obes Rev* 2011; **12**: 525–542.
- 11 Ong KK, Loos RJF. Rapid infancy weight gain and subsequent obesity: Systematic reviews and hopeful suggestions. *Acta Paediatr* 2006; **95**: 904–908.
- 12 Druet C, Stettler N, Sharp S, Simmons RK, Cooper C, Davey Smith G et al. Prediction of childhood obesity by infancy weight gain: an individual-level meta-analysis. *Paediatr Perinat Epidemiol* 2012; **26**: 19–26.
- 13 Yliharila H, Kajantie E, Osmond C, Forsen T, Barker DJP, Eriksson JG. Birth size, adult body composition and muscle strength in later life. *Int J Obes* 2007; **31**: 1392–1399.
- 14 Kuzawa CW, Hallal PC, Adair L, Bhargava SK, Fall CHD, Lee N et al. Birth weight, postnatal weight gain, and adult body composition in five low and middle income countries. *Am J Hum Biol* 2012; **24**: 5–13.
- 15 Demerath EW, Reed D, Choh AC, Soloway L, Lee M, Czerwinski SA et al. Rapid postnatal weight gain and visceral adiposity in adulthood: the Fels Longitudinal Study. *Obesity* 2009; **17**: 2060–2066.
- 16 Lamkjaer A, Schack-Nielsen L, Molgaard C, Ingstrup HK, Holst JJ, Michaelsen KF. Effect of growth in infancy on body composition, insulin resistance, and concentration of appetite hormones in adolescence. *Am J Clin Nutr* 2010; **91**: 1675–1683.
- 17 Kindblom JM, Lorentzon M, Hellqvist A, Lonn L, Brandberg J, Nilsson S et al. BMI changes during childhood and adolescence as predictors of amount of adult subcutaneous and visceral adipose tissue in men. *Diabetes* 2009; **58**: 867–874.
- 18 Ekelund U, Ong K, Linne Y, Neovius M, Brage S, Dunger DB et al. Upward weight percentile crossing in infancy and early childhood independently predicts fat mass in young adults: the Stockholm Weight Development Study (SWEDES). *Am J Clin Nutr* 2006; **83**: 324–330.
- 19 Eriksson M, Tynelius P, Rasmussen F. Associations of birthweight and infant growth with body composition at age 15—the COMPASS study. *Paediatr Perinat Epidemiol* 2008; **22**: 379–388.
- 20 Euser AM, Finken MJ, Keijzer-Veen MG, Hille ET, Wit JM, Dekker FW et al. Associations between prenatal and infancy weight gain and BMI, fat mass, and fat distribution in young adulthood: a prospective cohort study in males and females born very preterm. *Am J Clin Nutr* 2005; **81**: 480–487.
- 21 Menezes AMB, Hallal PC, Dumith SC, Matijasevich AM, Araujo CLP, Yudkin J et al. Adolescent blood pressure, body mass index and skin folds: sorting out the effects of early weight and length gains. *J Epidemiol Community Health* 2011; **66**: 149–154.
- 22 Chomtho S, Wells JCK, Williams JE, Davies PSW, Lucas A, Fewtrell MS. Infant growth and later body composition: evidence from the 4-component model. *Am J Clin Nutr* 2008; **87**: 1776–1784.
- 23 Aihie Sayer A, Syddall HE, Dennison EM, Gilbody HJ, Duggleby SL, Cooper C et al. Birth weight, weight at 1 y of age, and body composition in older men: findings from the Hertfordshire Cohort Study. *Am J Clin Nutr* 2004; **80**: 199–203.
- 24 Dehghan M, Merchant AT. Is bioelectrical impedance accurate for use in large epidemiological studies? *Nutr J* 2008; **7**: 26–27.
- 25 Wells JCK, Fewtrell MS. Measuring body composition. *Arch Dis Child* 2006; **91**: 612–617.
- 26 Rodriguez G, Moreno LA, Blay MG, Blay VA, Fleta J, Sarría A et al. Body fat measurement in adolescents: comparison of skinfold thickness equations with dual-energy X-ray absorptiometry. *Eur J Clin Nutr* 2005; **59**: 1158–1166.
- 27 Baumgartner RN, Koehler KM, Gallagher D, Romero L, Heymsfield SB, Ross RR et al. Epidemiology of Sarcopenia among the Elderly in New Mexico. *Am J Epidemiol* 1998; **147**: 755–763.
- 28 Kang SM, Yoon JW, Ahn HY, Kim SY, Lee KH, Shin H et al. Android fat depot is more closely associated with metabolic syndrome than abdominal visceral fat in elderly people. *PLoS One* 2011; **6**: e27694.
- 29 Yliharila H, Kajantie E, Osmond C, Forsen T, Barker DJ, Eriksson JG. Body mass index during childhood and adult body composition in men and women aged 56–70 y. *Am J Clin Nutr* 2008; **87**: 1769–1775.
- 30 Wells JCK, Cole TJ. ALSPAC study team. Adjustment of fat-free mass and fat mass for height in children aged 8 y. *Int J Obes* 2002; **26**: 947–952.
- 31 Cole TJ, Wright CM. A chart to predict adult height from a child's current height. *Ann Hum Biol* 2011; **38**: 662–668.
- 32 Wadsworth ME. Follow-up of the first national birth cohort: findings from the Medical Research Council National Survey of Health and Development. *Paediatr Perinat Epidemiol* 1987; **1**: 95–117.
- 33 Kuh D, Pierce M, Adams J, Deanfield J, Ekelund U, Friberg P et al. Updating the cohort profile for the MRC National Survey of Health and Development: a new clinic-based data collection for ageing research. *Int J Epidemiol* 2011; **40**: e1–e9.
- 34 Stafford M, Black S, Shah I, Hardy R, Pierce M, Richards M et al. Using a birth cohort to study ageing: representativeness and response rates in the National Survey of Health and Development. *Eur J Ageing* 2013; **10**: 145–157.
- 35 Pearson J, Dequeker J, Henley M, Bright J, Reeve J, Kalender W et al. European semi-anthropomorphic spine phantom for the calibration of bone densitometers: assessment of precision, stability and accuracy. The European Quantitation of Osteoporosis Study Group. *Osteoporos Int* 1995; **5**: 174–184.
- 36 Kalender WA, Felsenberg D, Genant HK, Fischer M, Dequeker J, Reeve J. The European Spine Phantom—a tool for standardization and quality control in spinal bone mineral measurements by DXA and QCT. *Eur J Radiol* 1995; **20**: 83–92.
- 37 Plank LD. Dual-energy X-ray absorptiometry and body composition. *Curr Opin Clin Nutr Metab Care* 2005; **8**: 305–309.
- 38 Wells JCK. Sexual dimorphism of body composition. *Best Practice Res Clin Endocrinol Metab* 2007; **21**: 415–430.
- 39 Hardy R, Kuh D, Whincup PH, Wadsworth MEJ. Age at puberty and adult blood pressure and body size in a British birth cohort study. *J Hypertens* 2006; **24**: 59–66.
- 40 Sachdev HS, Fall CH, Osmond C, Lakshmy R, Biswas SKD, Leary SD et al. Anthropometric indicators of body composition in young adults: relation to size at birth and serial measurements of body mass index in childhood in the New Delhi birth cohort. *Am J Clin Nutr* 2005; **82**: 456–466.
- 41 Kuh D, Hardy R, Chaturvedi N, Wadsworth MEJ. Birth weight, childhood growth and abdominal obesity in adult life. *Int J Obes* 2002; **26**: 40–47.
- 42 Kuh D, Bassey J, Hardy R, Aihie Sayer A, Wadsworth M, Birth Weight Cooper C. Childhood size, and muscle strength in adult life: evidence from a Birth Cohort Study. *Am J Epidemiol* 2002; **156**: 627–633.
- 43 Kuh D, Hardy R, Butterworth S, Okell L, Wadsworth M, Cooper C et al. Developmental origins of midlife grip strength: Findings from a birth cohort study. *J Gerontol A Biol Sci Med Sci* 2006; **61**: 702–706.
- 44 Kuh D, Hardy R, Butterworth S, Okell L, Richards M, Wadsworth M et al. Developmental origins of midlife physical performance: evidence from a British Birth Cohort. *Am J Epidemiol* 2006; **164**: 110–121.
- 45 Patel HP, Jameson KA, Syddall HE, Martin HJ, Stewart CE, Cooper C et al. Developmental influences, muscle morphology, and sarcopenia in community-dwelling older men. *J Gerontol* 2011; **67**: 82–87.
- 46 Rooney K, Ozanne SE. Maternal over-nutrition and offspring obesity predisposition: targets for preventative interventions. *Int J Obes* 2011; **35**: 883–890.
- 47 Mcmillen IC, Robinson JS. Developmental origins of the metabolic syndrome: prediction, plasticity, and programming. *Physiol Rev* 2005; **85**: 571–633.
- 48 Veldhuis JD, Roemmich JN, Richmond EJ, Rogol AD, Lovejoy JC, Sheffield-Moore M et al. Endocrine control of body composition in infancy, childhood, and puberty. *Endocr Rev* 2005; **26**: 114–146.
- 49 Demerath EW, Schubert CM, Maynard LM, Sun SS, Chumlea WC, Pickoff A et al. Do changes in body mass index percentile reflect changes in body composition in children? data from the Fels Longitudinal Study. *Pediatrics* 2006; **117**: E487–E495.
- 50 Telama R. Tracking of physical activity from childhood to adulthood: a review. *Obes Facts* 2009; **2**: 187–195.
- 51 Malina RM. Tracking of physical activity and physical fitness across the lifespan. *Res Q Exerc Sport* 1996; **67**: S48–S57.
- 52 Chen L, Zhang C, Yeung E, Ye A, Mumford SL, Wactawski-Wende J et al. Age at menarche and metabolic markers for type 2 diabetes in premenopausal women: The BioCycle Study. *J Clin Endocrinol Metab* 2011; **96**: E1007–E1012.
- 53 Ong KK, Bann D, Wills AK, Ward K, Adams JE, Hardy R et al. Timing of voice breaking in males associated with growth and weight gain across the life course. *J Clin Endocrinol Metab* 2012; **97**: 2844–2852.
- 54 Hemachandra AH, Klebanoff MA. Use of serial ultrasound to identify periods of fetal growth restriction in relation to neonatal anthropometry. *Am J Hum Biol* 2006; **18**: 791–797.
- 55 Ravelli GP, Stein ZA, Susser MW. Obesity in young men after famine exposure in utero and early infancy. *N Engl J Med* 1976; **295**: 349–353.
- 56 Ravelli AC, van der Meulen JH, Osmond C, Barker DJ, Bleker OP. Obesity at the age of 50 y in men and women exposed to famine prenatally. *Am J Clin Nutr* 1999; **70**: 811–816.
- 57 Gillman MW. The first months of life: a critical period for development of obesity. *Am J Clin Nutr* 2008; **87**: 1587–1589.
- 58 Tager IB, Haight T, Sternfeld B, Yu Z, van Der Laan M. Effects of physical activity and body composition on functional limitation in the elderly—Application of the marginal structural model. *Epidemiology* 2004; **15**: 479–493.
- 59 Wiklund P, Toss F, Weinehall L, Hallmans G, Franks PW, Nordstrom A et al. Abdominal and gynoid fat mass are associated with cardiovascular risk factors in men and women. *J Clin Endocrinol Metab* 2008; **93**: 4360–4366.



This work is licensed under a Creative Commons Attribution 3.0 Unported License. To view a copy of this license, visit <http://creativecommons.org/licenses/by/3.0/>

Supplementary Information accompanies this paper on International Journal of Obesity website (<http://www.nature.com/ijo>)