



UNIVERSITY OF
NOVI SAD

FACULTY OF
TECHNICAL SCIENCES

DEPARTMENT OF
PRODUCTION ENGINEERING

13TH INTERNATIONAL
SCIENTIFIC
CONFERENCE

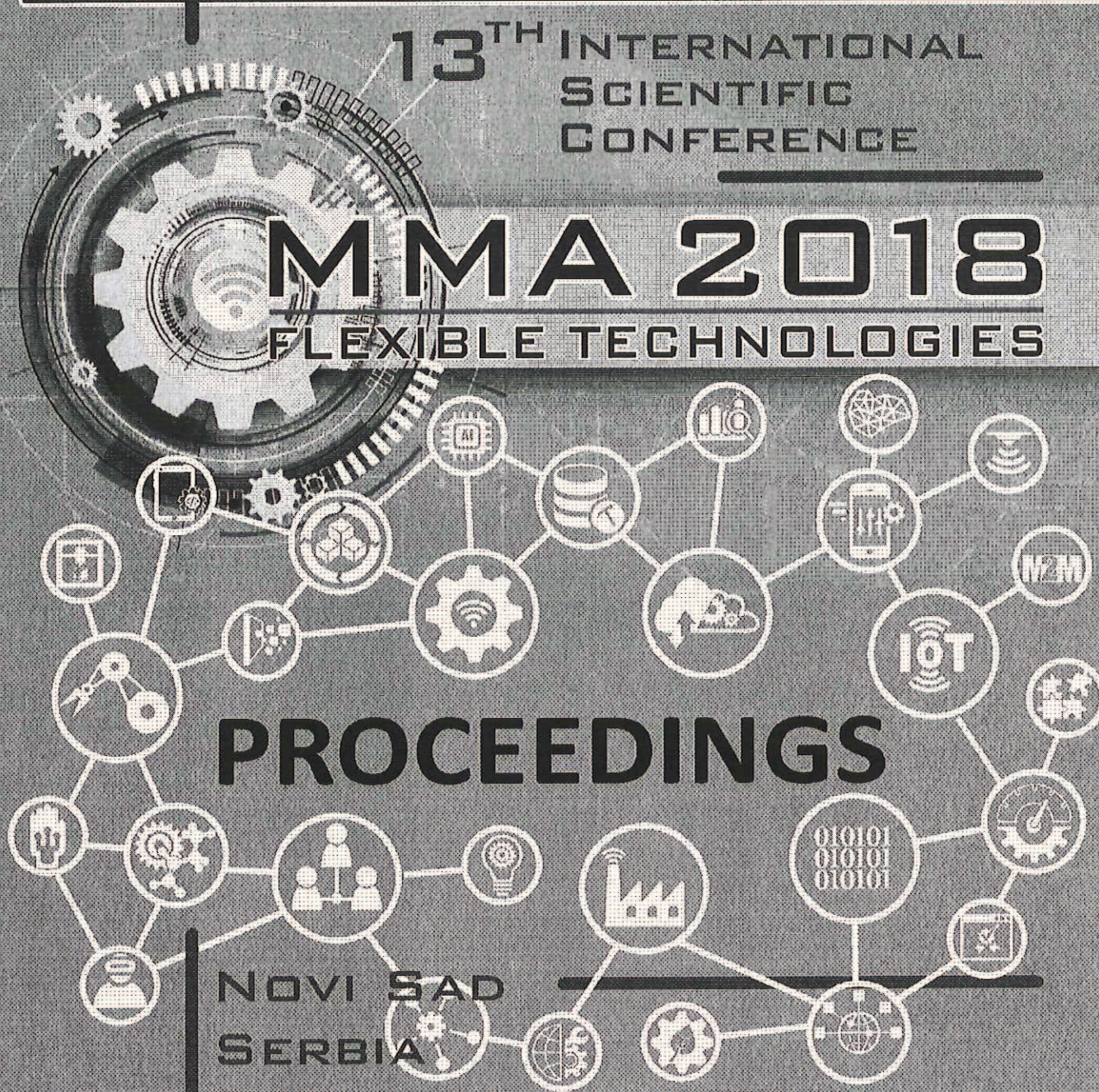
MMA 2018

FLEXIBLE TECHNOLOGIES

PROCEEDINGS

NOVI SAD
SERBIA

SEPTEMBER 28-29, 2018





UNIVERSITY OF NOVI SAD
FACULTY OF TECHNICAL SCIENCES
DEPARTMENT OF PRODUCTION ENGINEERING
NOVI SAD, SERBIA



13th INTERNATIONAL SCIENTIFIC CONFERENCE
MMA 2018 - FLEXIBLE TECHNOLOGIES

MMA 2018
FLEXIBLE TECHNOLOGIES

PROCEEDINGS

Novi Sad, September 28-29, 2018

PROCEEDINGS OF THE 13th INTERNATIONAL SCIENTIFIC CONFERENCE
MMA 2018 - FLEXIBLE TECHNOLOGIES
Novi Sad, 2018

Publisher: **FACULTY OF TECHNICAL SCIENCES
DEPARTMENT OF PRODUCTION ENGINEERING
21000 NOVI SAD, Trg Dositeja Obradovica 6
SERBIA**

*Organization of this Conference was approved by Educational-scientific Council of
Faculty of Technical Sciences in Novi Sad*

Editor: Dr Rade Doroslovački, professor, dean

Technical treatment and design: Dr Mijodrag Milošević, associate professor
Dr Dejan Lukić, associate professor
Dr Aco Antić, associate professor
M.Sc. Miloš Knežev, assistant

Manuscript submitted for publication: September 20, 2018

Printing: 1st

Circulation: 120 copies

CIP classification:

CIP - Каталогизacija y publikaciji
Библиотека Матице српске, Нови Сад

621.7/.9(082)

621.9(082)

**INTERNATIONAL Scientific Conference MMA 2018 - Flexible
Technologies (13 ; 2018 ; Novi Sad)**

Proceedings / 13th International Scientific Conference MMA 2018 -
Flexible Technologies, Novi Sad, 28-29 September, 2018 ; [editor Rade
Doroslovački]. - 1st printing. - Novi Sad : Faculty of Technical Sciences,
Department of Production Engineering, 2018 (Novi Sad : FTN, Graphics
Centre GRID). VII, 428 str. : ilustr. ; 30 cm

Tiraž 120. - Bibliografija uz svako rad. - Registar.

ISBN 978-86-6022-094-5

a) Производно машинство - Зборници. b) Метали - Обрада - Зборници
COBISS.SR-ID 325441799

Printing by: FTN, Graphic Centre
GRID, Novi Sad

*Financing of the Proceedings was sponsored by the Ministry of Education, Science and
Technological Development of the Republic of Serbia and supported by the Provincial Secretariat
for Higher Education and Scientific Research of AP Vojvodina.*

CONFERENCE ORGANIZER

University of Novi Sad
Faculty of Technical Sciences
Department of Production Engineering
Novi Sad, Serbia

INTERNATIONAL SCIENTIFIC COMMITTEE

- Mijodrag Milošević, FTN Novi Sad, SRB, chairman
Bojan Ačko, FS Maribor, SLO
Sergei Alexandrov, IPM Moskva, RUS
Aco Antić, FTN Novi Sad, SRB
Jan C. Aurich, TU Kaiserslautern, GER
Bojan Babić, MF Beograd, SRB
Sebastian Baloš, FTN Novi Sad, SRB
Konstantinos Bouzakis, AU Thessaloniki, GRE
Erhan Budak, FENS Istanbul, TUR
Igor Budak, FTN Novi Sad, SRB
Ilija Ćosić, FTN Novi Sad, SRB
Predrag Ćosić, FSB Zagreb, CRO
Robert Čep, VŠB Ostrava, CZE
Franc Čuš, FS Maribor, SLO
Livia Dana Beju, US Sibiu, ROU
Goran Devedžić, FIN Kragujevac, SRB
Ljubomir Dimitrov, TU Sofia, BGR
Cristian Doicin, UP Bucharest, ROU
Dragan Domazet, UM Beograd, SRB
Rade Doroslovački, FTN Novi Sad, SRB
Numan M. Durakbasa, TU Vienna, AUT
Kornel Ehmann, NU Illinois, USA
Valentina Gečevska, MF Skopje, MKD
Šefket Goletić, MF Zenica, BIH
Dušan Golubović, MF Istočno Sarajevo, BIH
Marin Gostimirović, FTN Novi Sad, SRB
Miodrag Hadžistević, FTN Novi Sad, SRB
František Holešovský, JEPU Usti, CZE
Jerzy Jędrzejewski, UT Wroclaw, POL
Janez Kopač, FS Ljubljana, SLO
Pavel Kovač, FTN Novi Sad, SRB
Ivan Kuric, FME Žilina, SVK
Mikolaj Kuzinovski, MF Skopje, MKD
Gordana Lakić Globočki, MF Banja Luka, BIH
Dejan Lukić, FTN Novi Sad, SRB
Ljubomir Lukić, FMG Kraljevo, SRB
Ognjan Lužanin, FTN Novi Sad, SRB
Vidosav Majstorović, MF Beograd, SRB
Miodrag Manić, MF Niš, SRB
Ildiko Mankova, TU Košice, SVK
Dorian Marjanović, FSB Zagreb, CRO
Zoran Miljković, MF Beograd, SRB
Radivoje Mitrović, MF Beograd, SRB
Slobodan Mitrović, FIN Kragujevac, SRB
Bogdan Nedić, FIN Kragujevac, SRB
Duško Pavletić, TF Rijeka, CRO
Darko Petković, MF Zenica, BIH
Petar Petrović, MF Beograd, SRB
Goran Putnik, University of Minho, POR
Radovan Puzović, MF Beograd, SRB
Miroslav Radovanović, MF Niš, SRB
Milenko Sekulić, FTN Novi Sad, SRB
Tomislav Šarić, SF Slavonski Brod, CRO
Mladen Šercer, FSB Zagreb, CRO
Leposava Šiđanin, FTN Novi Sad, SRB
Goran Šimunović, SF Slavonski Brod, CRO
Branko Škorić, FTN Novi Sad, SRB
Lubomír Šooš, STU Bratislava, SVK
Dušan Šormaz, OH Athens, USA
Tibor Szalay, BUTE Budapest, HUN
Slobodan Tabaković, FTN Novi Sad, SRB
Branko Tadić, FIN, Kragujevac, SRB
Ljubodrag Tanović, MF Beograd, SRB
Radoslav Tomović, MF Podgorica, MNE
Miroslav Trajanović, MF Niš, SRB
Nicolae Ungureanu, FI Baia Mare, ROU
Dragiša Vilotić, FTN Novi Sad, SRB
Mircea Viorel Dragoi, UT Brasov, ROU
Vojo Višekruna, MF Mostar, BIH
Đorđe Vukelić, FTN Novi Sad, SRB
Lihui Wang, KTH Stockholm, SWE
Milan Zeljković, FTN Novi Sad, SRB

HONORARY COMMITTEE

Slavko Arsovski, FIN Kragujevac, SRB
Pavao Bojanić, MF Beograd, SRB
Milenko Jovičić, MF Beograd, SRB
Vid Jovišević, MF Banja Luka, BIH
Milislav Kalajdžić, MF Beograd, SRB
Miodrag Lazić, FIN Kragujevac, SRB
Vučko Mečanin, MF Kraljevo, SRB
Vladimir Milačić, MF Beograd, SRB
Dragoje Milikić, FTN Novi Sad, SRB

Dragan Milutinović, MF Beograd, SRB
Ratko Mitrović, MF Kragujevac, SRB
Sava Sekulić, FTN Novi Sad, SRB
Mirko Soković, FS Ljubljana, SLO
Bogdan Sovilj, FTN Novi Sad, SRB
Jelena Stankov, FTN Novi Sad, SRB
Velimir Todić, FTN Novi Sad, SRB
Dragutin Zelenović, member of SASA, SRB

ORGANIZING COMMITTEE

Dejan Lukić, FTN Novi Sad, SRB, chairman
Aleksandar Živković, FTN Novi Sad, SRB
Boris Agarski, FTN Novi Sad, SRB
Borislav Savković, FTN Novi Sad, SRB
Branko Štrbac, FTN Novi Sad, SRB
Ivan Matin, FTN Novi Sad, SRB
Miloš Knežev, FTN Novi Sad, SRB, secretary

Mario Šokac, FTN Novi Sad, SRB
Željko Santoši, FTN Novi Sad, SRB
Cvijetin Mladenović, FTN Novi Sad, SRB
Milana Ilić Mićunović, FTN Novi Sad, SRB
Dragan Rodić, FTN Novi Sad, SRB
Nenad Kulundžić, FTN Novi Sad, SRB
Zorana Lanc, FTN Novi Sad, SRB

Karpe, B., Fercak, Z., Nagode, A., Bavec, B., Kozuh, S., Gojic, M., Smolej, S., Sokovic, M., Bizjak, M., Kosec, B.

THERMAL CHARACTERISTICS OF ENAMELS AND ENAMELLED METAL SHEETS

Abstract: *The main task of the research was to find out why sometimes cracking of the enamelled layer occur and to what extent enamel layer affects the heat transfer in the cooking oven. The samples of the enamelled steel sheet were metallographically analysed by scanning electron microscopy (SEM-EDX) and optical microscopy (OM). Measurements of the thermal properties of two types of enamels, which are used for oven interior enamelling was carried out in accordance with the standard ISO 22007-2 by transient planar heat source method (TPS Hot Disk 2200). To ensure proper measurement conditions, the samples of the enamels were prepared in the form of thick layers. The results show that enamel density has significant influence on its thermal properties. An assessment of the influence of the thermal conductivity of the enamel layer on the heat transfer in the oven is also given.*

Key words: *Thermal properties, Enamels, Enamelled steel sheet, TPS method, Measurement*

1. INTRODUCTION

Porcelain enamel is a glassy coating over the metal substrate, intended to improve its corrosion resistance, abrasion resistance, antibacterial characteristic or aesthetic appearance. Enamelling is a technological process in which a fine enamel powder is applied to the metallic substrate and heated to the melting temperature of the enamel (750-850°C), whereby the melt adhesively binds to the metal substrate and a solid, continuous glass coating is formed on the surface of the metal surface.

The enamels can be classified in several ways: depending on the substrate on which the enamel is applied, depending on the function they perform or according to the enamelling methods [1].

According to the metal substrate they can be classified as:

- Enamels for steel sheet
- Enamels for cast iron
- Enamels for aluminium
- Enamels for stainless steel and high-temperature resistant alloys
- Enamels for electronic applications
- Enamels for jewellery (precious metals, copper alloys)

According to the function they are designed for:

- Ground enamels that improve adherence between cover coats and substrate
- Cover coat enamels, which are further divided by the colour or by the certain physical and/or chemical property
- Direct enamels, which have the function of both ground and cover enamel

According to the enamelling technology:

- Dry electrostatic enamels
- Wet electrostatic enamels

Recently, the most commonly used industrial enamelling technology employs direct enamels, with

one coat and one firing process or for some application ground and cover coat enamels with one unified firing process.

When selecting a steel for enamelling, it is important to consider the following factors: Basic ability for enamelling (enamellability), absence of surface defects, and resistance to sagging at enamelling temperatures, while other characteristic such as formability, weldability, strength, etc. are of primary concern of product manufacturing technology before enamelling or mechanical property requirements of the final product.

By the term enamellability of steel we mean the absence of excessive formation of gas bubbles that cause the boiling of the enamel. Evolution of gas, which can originate from steel and enamel as well, is caused by various reactions at the steel/enamel interface. With spectrographic analysis, it was found out that gases evolving when enamelling steel are carbon monoxide, carbon dioxide, hydrogen, water vapour, and nitrogen. The most detrimental gas evolving reaction is the oxidation of carbon in the steel surface and the formation of carbon monoxide. Therefore, steel with low carbon (usually below 0.08 wt.%) or carbon stabilized (with Ti or Nb) chemical compositions should be primarily selected. If high-carbon steel cannot be avoided, special surface preparation techniques must be applied before enamelling.

2. THERMAL CONDUCTIVITY MEASUREMENT

Transient planar heat source method (TPS, Hot disk AB®) was used for the measurement of the thermal properties of enamels. With this method, the thermal conductivity can be measured with an accuracy of $\pm 2\%$ and specific thermal capacity and temperature diffusivity with accuracy of $\pm 5\%$ in accordance with ISO 22007-2 standard [2]. Thermal conductivity can be measured in the range from 0.01 to 500 Wm⁻¹K⁻¹, specific thermal capacity up to 5 MJm⁻³K⁻¹ and

temperature diffusivity from 0.1 to 300 mm²s⁻¹. The device is also equipped with a laboratory muffle furnace and allows the measurement of thermal properties up to 700°C in an inert atmosphere (Figure 1).



Fig 1. TPS 2200 Hot disk AB ® analyser.

The thermal analyser utilises a sensor element in the shape of double spiral (Figure 2), which acts both as heating element for increasing the temperature of the sample and as an electric resistance thermometer. The spiral is made by selective etching from 10 µm thick nickel foil, supported and electrically insulated on both sides with insulating foil. In the temperature range from sub-zero up to 300°C polyimide foil (Kapton® Du Pont) is used as insulating material, while above 300°C mica foil is used as insulating material. Before the measurement the sensor is sandwiched between two halves of the sample (solids) or embedded in the sample (liquids, powders). The main principle of the measurement system is that the sensor is first supplied with a constant electrical power which creates a dynamic temperature field in its surroundings, and then 200 x in succession measures the change in sensor electrical resistance at a selected time interval. Parameters like heating power, measurement time for electrical resistivity measurement and sensor radius are used to optimize the settings for the experiment.

Since we are not equipped with a module for measuring the thermal properties of thin insulating films, enamel samples were prepared in the form of an approximately 1 cm thick layer. To make such samples, first dies (9 x 6 x 1.5 cm) from low carbon ferritic steel were made. Dies were filled with enamel powder and gradually heated to 850°C and 900°C for 10 minutes and then slowly cooled in the furnace [3].

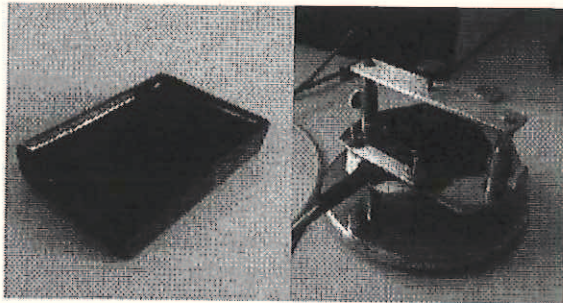


Fig 2. Thick enamel layer (left), sensor position (right).

Since enamel melts wet the steel surface well it is very difficult to make two identical samples with parallel free surfaces (non-concave), which would enable the insertion of the sensor between them without an air gap. Therefore, the measurements were carried out using a single-side method, where the sensor is “sandwiched” between the investigating sample and insulation material of known thermal conductivity (Styrofoam). Several measurements were performed on various areas of the individual sample.

Table 1. Thermal properties of enamel 1

Pos.	λ [Wm ⁻¹ K ⁻¹]	a [mm ² s ⁻¹]	C_p [MJm ⁻³ K ⁻¹]
1	0.6821	0.4286	1.591
1	0.6845	0.4335	1.579
1	0.6852	0.4390	1.579
1	0.6840	0.4385	1.560
2	0.6667	0.4239	1.573
2	0.6678	0.4273	1.563
2	0.6683	0.4251	1.572

Table 2. Thermal properties of enamel 2

Pos.	λ [Wm ⁻¹ K ⁻¹]	a [mm ² s ⁻¹]	C_p [MJm ⁻³ K ⁻¹]
1	0.8786	0.4410	1.992
1	0.8879	0.4626	1.919
1	0.8867	0.4588	1.932
1	0.8866	0.4588	1.932
2	0.8641	0.4267	2.025
2	0.8621	0.4311	2.000
2	0.8626	0.4309	2.002

Several samples prepared from the same enamel, but with different densities (due to firing temperature variation) were measured. Results show significant influence of density on the thermal conductivity of enamel. Tables 6 and 7 show results of thermal conductivity of individual enamel as a function of its density.

Table 3. Thermal conductivity as a function of enamel layer density (enamel 1)

ρ [g/cm ³]	λ [Wm ⁻¹ K ⁻¹]
1.88 – 1.89	0.66 – 0.69
1.77 – 1.78	0.65 – 0.67
1.73 – 1.75	0.60 – 0.61

Table 4. Thermal conductivity as a function of enamel layer density (enamel 2)

ρ [g/cm ³]	λ [Wm ⁻¹ K ⁻¹]
2.20 – 2.22	0.94 – 0.95
2.06 – 2.13	0.83 – 0.84

3. MICROSTRUCTURE INVESTIGATION

The microstructure of the enamel is shown in the figure 3. The results of micro-chemical analyses (EDX) of the areas marked in the figure 3 by squares are presented in the table 2.

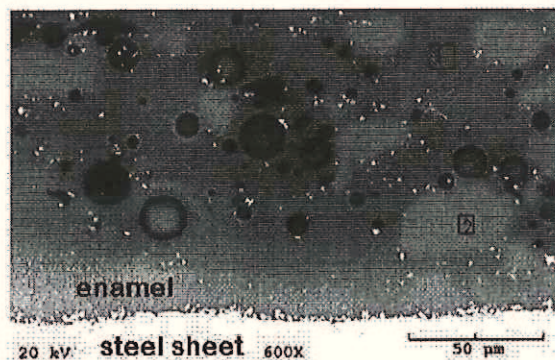


Fig 3. Microstructure of enamel layer (SEM).

Table 3. Microchemical analysis (EDX) of areas marked in Figure 3

Element	M. 1 wt. [%]	M. 2 wt. [%]	M. 3 wt. [%]
O	15.237	13.091	15.020
Na	5.298	4.471	-
Al	0.716	0.880	-
Si	47.904	45.043	84.980
K	5.923	6.181	-
Ca	4.852	2.717	-
Ti	6.638	2.961	-
Mn	3.749	1.328	-
Fe	6.038	8.537	-
Co	1.588	0.923	-
Cu	0.744	0.353	-
Zr	1.313	13.515	-

From the figure 3 can be seen that enamel layer is not homogenous, but consist of various crystal phases, pores, and amorphous areas with different chemical compositions. Brighter contrasted areas have much higher Zr content (added as ZrO), while darker contrasted areas contain a higher percentage of Ti and Mn (added as TiO₂ and MnO). Sharp dark phases are SiO₂ crystals, and spheres porosity. In addition, small bright particles located near the steel-enamel interface and in areas rich with titanium and manganese are also visible. Although the quantitative evaluation of the chemical composition with EDX microchemical analysis of such small analytical volumes is not accurate, it nevertheless points out the differences in chemical composition of the bright particles located near the steel/enamel interface and bright particles in the bulk enamel layer. Namely, particles in the enamel contain chromium while particles at the interface contain cobalt. The chromium was not detected in particles at the steel/enamel interface except for location 2 (Figure 4), which shows a different, more

sharp morphology, so that the possibility of interaction between the particle already in the enamel and steel surface cannot be excluded. In addition, the particles in the enamel do not contain cobalt, which is present in all particles at the interface. Since the presence of chromium in enamels is not common [4], we analysed the enamel powders before the enamelling process.

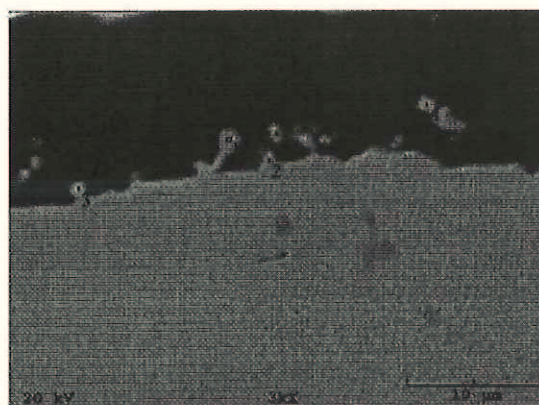


Fig 4. Steel/enamel interface (SEM).

Table 4. Microchemical analysis (EDX) of areas marked in Figure 4

EL.	M. 1 wt. [%]	M. 2 wt. [%]	M. 3 wt. [%]	M. 4 wt. [%]	M. 5 wt. [%]
O	4.230	4.921	7.821	12.682	8.779
Na	3.159	2.642	5.300	4.532	4.919
Al	0.534	0.436	0.971	1.095	0.803
Si	15.438	11.630	25.410	35.872	27.692
K	1.079	0.805	1.943	3.215	2.191
Ca	1.278	0.869	2.202	3.409	2.701
Ti	1.346	1.624	2.472	3.847	2.817
Cr	-	4.615	-	-	-
Mn	0.636	0.867	1.328	2.358	1.677
Fe	63.106	65.821	48.264	28.678	43.851
Co	6.716	3.494	2.827	1.620	3.510
Cu	2.048	1.848	0.794	-	-
Zr	0.430	0.427	0.666	2.693	1.060

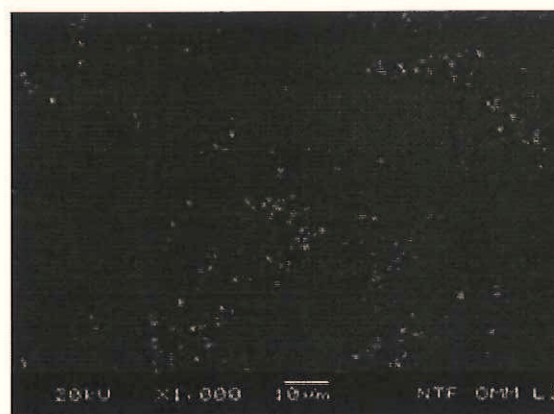


Fig 5. Bright particles on the enamel surface (SEM).

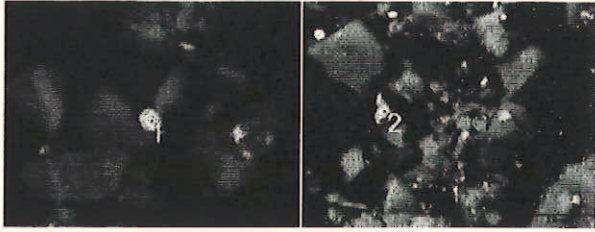


Fig 6. Bright particles in the enamel powder (SEM).

Table 5. Microchemical analysis of bright particles in enamel layer after firing (Figure 5) and in enamel powder before firing (Figure 6)

Element	M. 1 Fig. 5 wt. [%]	M. 2 Fig. 5 wt. [%]	M. 1 Fig. 6 wt. [%]	M. 2 Fig. 6 wt. [%]
O	6.025	5.319	0.484	11.61
Na	2.232	1.307	0.455	1.49
Al	1.163	0.253	0.45	0.997
Si	17.889	8.226	3.81	7.603
K	1.509	0.659	0.71	0.314
Ca	0.805	0.571	1.247	0.259
Ti	1.104	2.416	0.614	0.228
Cr	27.364	19.629	26.18	14.521
Cu	0.469	1.507	1.285	0.702
Fe	39.536	59.735	64.604	61.823
Zr	1.904	0.376	0.145	0.45

Figure 6 shows the enamel powder after final grinding, ready for application to the metal substrate. As we can see, in the powder is a noticeable number of shiny particles of similar size (most of which less than 1 μm) as detected in the enamel layer after firing. By microchemical analysis (EDX) was determined that these particles also contain higher concentrations of chromium and iron (Table 5). This is a proof that the particles found in the enamel layer after firing originate from the previous preparation of enamel powder and are not the result of chemical reactions during firing of the enamel.

4. HEAT TRANSFER THROUGH ENAMELLED STEEL SHEET

Heat transfer rate through enamelled steel sheet per unit of area can be calculated by equation:

$$U = \frac{\Delta T}{\frac{1}{\alpha_{out}} + \frac{\delta_{steel}}{\lambda_{steel}} + \frac{\delta_{en}}{\lambda_{en}} + \frac{1}{\alpha_{in}}} \left[\frac{W}{m^2} \right]$$

Where δ_{steel} and δ_{en} represents thickness of steel sheet and enamel layer, λ_{steel} and λ_{en} thermal conductivities of the steel sheet and enamel, α_{out} in α_{in} heat transfer coefficients (radiation + convection) on

both sides of enamelled steel sheet, and ΔT temperature difference. For heat transfer coefficients in kitchen ovens values between 15 - 40 $\text{Wm}^{-2}\text{K}^{-1}$ can be found in the literature [5]. In the case of one side enamelled steel sheet (200 μm thick enamel layer + 1 mm thick steel sheet), individual thermal resistances can be evaluated.

Thermal resistances:

$$\frac{\delta_{steel}}{\lambda_{steel}} = \frac{0,001}{54} = 1,85 \cdot 10^{-5} \text{ m}^2\text{K/W}$$

$$\frac{\delta_{en}}{\lambda_{en}} = \frac{200 \cdot 10^{-6}}{0,3 \div 1,3} = 6,6 \cdot 10^{-4} \div 1,5 \cdot 10^{-4} \text{ m}^2\text{K/W}$$

$$\frac{1}{\alpha_{in/out}} = \frac{1}{15 \div 40} = 6,6 \cdot 10^{-2} \div 2,5 \cdot 10^{-2} \text{ m}^2\text{K/W}$$

We can quickly figure out that conduction thermal resistance of enamelled steel sheet is negligible factor compared to convective resistance if heat transfer coefficient at only one side is below 100 $\text{Wm}^{-2}\text{K}^{-1}$. Even if we consider extreme values of heat transfer coefficients (500 $\text{Wm}^{-2}\text{K}^{-1}$) on both sides of enamelled steel sheet and calculate the heat transfer rate with limited values of enamel thermal conductivity (0,3 or 1,3 $\text{Wm}^{-1}\text{K}^{-1}$) the difference in heat transfer rate will be less than 13%. However, in the case of kitchen ovens, such values of heat transfer coefficients will never be achieved.

5. CONCLUSIONS

The thermal properties of the enamel are mostly affected by the density of the enamel. The greater the density, the higher will be thermal conductivity and the specific volume heat capacity, which is in accordance with the theory. Namely, gases exhibit at least an order of magnitude lower thermal conductivity than solids. The density of the enameled layer depends on the chemical composition of the enamel and the process parameters of the enameling which influence the amount of porosity.

Enamel layer has a multiphase structure composed of amorphous areas with different chemical composition, crystal phases (SiO_2 , metal particles) and pores. Certain crystalline phases (metal inclusions) found in the enamel layer after firing originate from the process of preparing the powder (grinding, sieving) or are intentionally added. In all analyzed enamel powders, the metallic inclusions were detected, which have a similar chemical composition and size as metal inclusions located in the enamel layer after firing. If these particles agglomerate during firing they will cause cracking of the enamel layer.

Microstructural observations enable precise monitoring of the changes in the material at any technological stage and allow faster detection of the defect origin.

6. REFERENCES

- [1] I. A. Andrews, S. Pagliuca, D. W. Faust, Porcelain (vitreous) enamels and industrial enamelling processes. The preparation, application and properties of enamels, Mantova: Tipografia commerciale, 2011, 900.
- [2] Slovenski standard SIST EN ISO 22007-2:2012. (2012). Polimerni materiali – Ugotavljanje toplotne prevodnosti in toplotne razprševalnosti – 2.del: Metoda s tranzientnim ploskovnim toplotnim virom (vroči disk) (ISO 22007-2:2008), Ljubljana: Slovenski inštitut za standardizacijo.
- [3] B. Kosec, B. Karpe, Instrument for thermal properties analysis Hot Disk TPS 2200, IRT3000, 70 (2017), 67.
- [4] M. Bodaghi, A. Davarpanah: The influence of cobalt on the microstructure and adherence characteristics of enamel on steel sheet, Processing and Application of Ceramics, 2011, vol. 5, 215-222.

Authors: Ass. Prof. Dr. Blaž Karpe, Žan Ferčak, Samo Smolej, Prof. Dr. Milan Bizjak, Assoc. Prof. Dr. Aleš Nagode, Prof. Dr. Borut Kosec, University of Ljubljana, Faculty of Natural Sciences and Engineering, Aškerčeva 12, 1000 Ljubljana, Slovenia, Phone: +386 1 2000413, Fax: +386 1 4704560. E-mail: blaz.karpe@omm.ntf.uni-lj.si; zanf@gmail.com; samo.smolej@omm.ntf.uni-lj.si; milan.bizjak@omm.ntf.uni-lj.si; ales.nagode@omm.ntf.uni-lj.si; borut.kosec@omm.ntf.uni-lj.si;

Boštjan Bavcc, Gorenje d.d., Partizanska cesta 12, 3320 Velenje, Slovenia, Phone: +386 3 8991000, Fax: +386 3 8991001. E-mail: bostjan.bavcc@gorenje.com

Prof. Dr. Mirko Gojić, Assoc. Prof. Dr. Stjepan Kožuh, University of Zagreb, Faculty of Metallurgy, Aškerčeva 6, 1000 Sisak, Croatia, Phone: +385 43 533 381, Fax: +385 43 533 381. E-mail: gojic@simet.hr; kozuh@simet.hr

Prof. Dr. Mirko Soković, University of Novo mesto, Faculty of Mechanical Engineering, Na Loko 2, 8000 Novo mesto, Slovenia, Phone: +386 7 3930019, Fax: +386 7 3930013. E-mail: mirko.sokovic@gmail.com;

