

# Northumbria Research Link

Citation: Lima-Barbero, José Francisco, Díaz-Sanchez, Sandra, Sparagano, Olivier, Finn, Robert, de la Fuente, José and Villar, Margarita (2019) Metaproteomics characterization of the alphaproteobacteria microbiome in different developmental and feeding stages of the poultry red mite *Dermanyssus gallinae* (De Geer, 1778). *Avian Pathology*, 48 (sup1). S52-S59. ISSN 0307-9457

Published by: Taylor & Francis

URL: <https://doi.org/10.1080/03079457.2019.1635679>  
<<https://doi.org/10.1080/03079457.2019.1635679>>

This version was downloaded from Northumbria Research Link: <http://nrl.northumbria.ac.uk/39936/>

Northumbria University has developed Northumbria Research Link (NRL) to enable users to access the University's research output. Copyright © and moral rights for items on NRL are retained by the individual author(s) and/or other copyright owners. Single copies of full items can be reproduced, displayed or performed, and given to third parties in any format or medium for personal research or study, educational, or not-for-profit purposes without prior permission or charge, provided the authors, title and full bibliographic details are given, as well as a hyperlink and/or URL to the original metadata page. The content must not be changed in any way. Full items must not be sold commercially in any format or medium without formal permission of the copyright holder. The full policy is available online: <http://nrl.northumbria.ac.uk/policies.html>

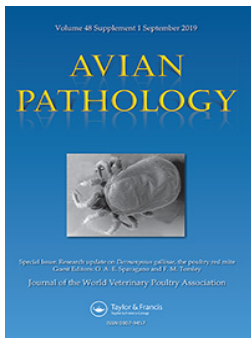
This document may differ from the final, published version of the research and has been made available online in accordance with publisher policies. To read and/or cite from the published version of the research, please visit the publisher's website (a subscription may be required.)



UniversityLibrary



**Northumbria**  
**University**  
NEWCASTLE



# Metaproteomics characterization of the alphaproteobacteria microbiome in different developmental and feeding stages of the poultry red mite *Dermanyssus gallinae* (De Geer, 1778)

José Francisco Lima-Barbero, Sandra Díaz-Sanchez, Olivier Sparagano, Robert D. Finn, José de la Fuente & Margarita Villar

To cite this article: José Francisco Lima-Barbero, Sandra Díaz-Sanchez, Olivier Sparagano, Robert D. Finn, José de la Fuente & Margarita Villar (2019) Metaproteomics characterization of the alphaproteobacteria microbiome in different developmental and feeding stages of the poultry red mite *Dermanyssus gallinae* (De Geer, 1778), *Avian Pathology*, 48:sup1, S52-S59, DOI: [10.1080/03079457.2019.1635679](https://doi.org/10.1080/03079457.2019.1635679)

To link to this article: <https://doi.org/10.1080/03079457.2019.1635679>



© 2019 The Author(s). Published by Informa UK Limited, trading as Taylor & Francis Group



[View supplementary material](#)



Accepted author version posted online: 03 Jul 2019.  
Published online: 02 Aug 2019.



[Submit your article to this journal](#)



Article views: 318







[View related articles](#)



[View Crossmark data](#)

# Metaproteomics characterization of the alphaproteobacteria microbiome in different developmental and feeding stages of the poultry red mite *Dermanyssus gallinae* (De Geer, 1778)

José Francisco Lima-Barbero <sup>a,b</sup>, Sandra Díaz-Sánchez <sup>a</sup>, Olivier Sparagano <sup>c</sup>, Robert D. Finn <sup>d</sup>, José de la Fuente <sup>a,e</sup> and Margarita Villar <sup>a</sup>

<sup>a</sup>SaBio. Instituto de Investigación en Recursos Cinegéticos IREC-CSIC-UCLM-JCCM, Ronda de Toledo 12, 13071 Ciudad Real, Spain; <sup>b</sup>Sabiotec, S.A. Ed. Polivalente UCLM Ciudad Real, Spain; <sup>c</sup>Department of Infectious Diseases and Public Health, City University of Hong Kong, Kowloon, Hong Kong, SAR; <sup>d</sup>Department of Applied Sciences, Faculty of Health & Life Sciences, Northumbria University, Newcastle Upon Tyne, UK; <sup>e</sup>Department of Veterinary Pathobiology, Center for Veterinary Health Sciences, Oklahoma State University, Stillwater, USA

## ABSTRACT

The poultry red mite (PRM), *Dermanyssus gallinae* (De Geer, 1778), is a worldwide distributed ectoparasite and considered a major pest affecting the laying hen industry in Europe. Based on available information in other ectoparasites, the mite microbiome might participate in several biological processes and the acquisition, maintenance and transmission of pathogens. However, little is known about the role of PRM as a mechanical carrier or a biological vector in the transmission of pathogenic bacteria. Herein, we used a metaproteomics approach to characterize the alphaproteobacteria in the microbiota of PRM, and variations in its profile with ectoparasite development (nymphs vs. adults) and feeding (unfed vs. fed). The results showed that the bacterial community associated with *D. gallinae* was mainly composed of environmental and commensal bacteria. Putative symbiotic bacteria of the genera *Wolbachia*, *C. Tokpelaia* and *Sphingomonas* were identified, together with potential pathogenic bacteria of the genera *Inquilinus*, *Neorickettsia* and *Roseomonas*. Significant differences in the composition of alphaproteobacterial microbiota were associated with mite development and feeding, suggesting that bacteria have functional implications in metabolic pathways associated with blood feeding. These results support the use of metaproteomics for the characterization of alphaproteobacteria associated with the *D. gallinae* microbiota that could provide relevant information for the understanding of mite-host interactions and the development of potential control interventions.

## Research highlights

- Metaproteomics is a valid approach for microbiome characterization in ectoparasites.
- Alphaproteobacteria putative bacterial symbionts were identified in *D. gallinae*.
- Mite development and feeding were related to variations in bacterial community.
- Potentially pathogenic bacteria were identified in mite microbiota.

## ARTICLE HISTORY

Received 1 March 2019  
Accepted 12 June 2019

## KEYWORDS



*Dermanyssus*; microbiome; proteomics; mite; bacteria; poultry; pathogen

## Introduction

The haematophagous ectoparasite *Dermanyssus gallinae* (De Geer, 1778; Acari: Mesostigmata), commonly known as the poultry red mite (PRM), is the major pest of the poultry industry especially affecting laying hens (Chauve, 1998). *D. gallinae* s. str. is a complex generalist species with a low host specificity (Roy *et al.*, 2009a, 2009b), and is becoming problematic due to its capacity to parasitize a wide range of domestic and wild birds, and even mammals including humans (Cafiero *et al.*, 2008; Valiente Moro *et al.*, 2009a; George *et al.*, 2015). Interestingly, recent reports in pigeons have identified a lineage different from those

in poultry, *D. gallinae* lineage 1 (Pezzi *et al.*, 2017). *D. gallinae* requires a blood meal for moulting from protonymph to deutonymph, from deutonymph to adult and for egg-laying (Kilpinen, 2001). In laying hens, PRM is associated with poor health status and welfare problems associated with weight gain, reduced egg laying, and anaemia causing death in severe cases of infestation (Cosoroaba, 2001).

To date, the role of *D. gallinae* as a biological vector is questionable. Although its capacity as a reservoir of bacteria and viruses multiplying in the mite under field conditions has not been fully elucidated (Valiente Moro *et al.*, 2005), the multiplication and transovarial/

**CONTACT** Margarita Villar  margaritam.villar@uclm.es  SaBio. Instituto de Investigación en Recursos Cinegéticos IREC-CSIC-UCLM-JCCM, Ronda de Toledo 12, 13071 Ciudad Real, Spain

 Supplemental data for this article can be accessed at <https://doi.org/10.1080/03079457.2019.1635679>

© 2019 The Author(s). Published by Informa UK Limited, trading as Taylor & Francis Group

This is an Open Access article distributed under the terms of the Creative Commons Attribution License (<http://creativecommons.org/licenses/by/4.0/>), which permits unrestricted use, distribution, and reproduction in any medium, provided the original work is properly cited.

transstadial transmission of *Salmonella enteritidis* have been demonstrated (Valiente Moro *et al.*, 2007). Several reports have identified pathogenic bacteria such as *Coxiella burnetii*, *Erysipelothrix rhusiopathiae*, *Listeria monocytogenes*, *Pasterella multocida* and *Spirochetes* in PRM (Valiente Moro *et al.*, 2009b; Huong *et al.*, 2014), demonstrating its role as mechanical vector for several pathogens (Sikes & Chamberlain, 1955; Zemskaya & Pchelkina, 1967; Ciolca *et al.*, 1968; Shirinov *et al.*, 1972; Petrov, 1975; Durden *et al.*, 1993; Sommer *et al.*, 2016). The presence of endosymbiotic bacteria, such as *Spiroplasma*, *Candidatus Cardinium*, *Schineria*, *Rickettsiella*, and *Wolbachia* spp., has been also described in *D. gallinae* (De Luna *et al.*, 2009; Valiente Moro *et al.*, 2009b; Hubert *et al.*, 2017). The relationships between these bacterial symbionts and PRM has not been fully characterized, but it will be interesting to explore them as potential mechanisms for the control of PRM (De Luna *et al.*, 2009).

Recent advances in metagenomics and metaproteomics have greatly contributed to the knowledge of the complexity and diversity of the ectoparasite microbiome, and its functional implications (Carpi *et al.*, 2011; Neelakanta & Sultana, 2013; Chandler *et al.*, 2015; Hubert *et al.*, 2017; Swee & Kwan, 2017; Greay *et al.*, 2018; Hernández-Jarguin *et al.*, 2018). Hubert *et al.* (2017) were the first to characterize the microbiome of farm-collected PRM using 16S ribosomal RNA metagenomics.

In this study, we used a metaproteomics approach focused on the class Alphaproteobacteria because it is a wide diverse and abundant proteobacterial group within arthropods that includes medically important vector-borne pathogenic bacteria (i.e: the genera *Anaplasma*, *Rickettsia*, *Brucella*) and other important symbiotic genera (i.e: *Wolbachia*, or symbiont-like *Sphingomonas*) (Walker, 2017). In this study, we used a metaproteomic approach to identify microbial communities harboured by PRM. To date, metagenomics tools have been applied to unravel the composition of the microbial communities of mites (Hubert *et al.*, 2017). The innovative aspect of this study was to complement current metagenomics information at protein levels and provide new insights into potential functional implications of mite microbiota.

## Materials and methods

### Mite collection and protein extraction

*D. gallinae* were collected from a free-range poultry unit in North East England. Mites were stored at 4°C within sealable plastic bags in complete darkness until used. Mites were sorted into groups: (i) engorged female adult mites (FA), (ii) non-fed female adult mites (UA), (iii) engorged proto and deutonymphs (FN), and (iv) unfed proto and

deutonymphs (UN). The 1.5 ml tubes containing approximately 0.05 g of mites per sample were snap-frozen in liquid nitrogen and stored at -80°C until used for protein extraction. The mites were resuspended in ice-cold PBS (in a proportion of 10 ml per gram of mites) supplemented with cOmplete™ Protease Inhibitor Cocktail (Roche Diagnostics GmbH, Mannheim, Germany), and homogenized on ice for two pulses of 30 s each with Ultra Turrex® T 25 D-S2 with a S25N-8G dispersing element (IKA, Sataufen, Germany). After centrifugation at 5000 × g for 20 min at 4°C, insoluble material and debris were removed and soluble material was decanted and centrifuged for a second time. The resulting soluble proteins were immediately snap-frozen and stored at -80°C until used for proteomics analysis.

### Proteomics data acquisition and analysis

Protein concentration was determined using the BCA Protein Assay (Thermo Scientific, San Jose, CA, USA) with bovine serum albumin as standard. Protein extracts (75 µg per sample) were on-gel concentrated by SDS-PAGE as previously described (Villar *et al.*, 2014). The unseparated protein bands were visualized by GelCode Blue Stain Reagent (Thermo Scientific, Waltham, MA, USA) excised, cut into 2 × 2 mm cubes and digested overnight at 37°C with 60 ng/µl sequencing grade trypsin (Promega, Madison, WI, USA) at 5:1 protein:trypsin (w/w) ratio in 50 mM ammonium bicarbonate, pH 8.8 containing 10% (v/v) acetonitrile (Shevchenko *et al.*, 2007). The resulting tryptic peptides were extracted by incubation with 12 mM ammonium bicarbonate, pH 8.8, and digestion was stopped by the addition of trifluoroacetic acid to a final concentration of 1%. Peptides were finally desalted onto OMIX Pipette tips C18 (Agilent Technologies, Santa Clara, CA, USA), dried-down and stored at -20°C until mass spectrometry analysis.

The desalted protein digests were resuspended in 0.1% formic acid and analysed by reverse phase liquid chromatography coupled to mass spectrometry (RP-LC-MS/MS) using an Easy-nLC II system coupled to an LTQ-Orbitrap-Velos-Pro mass spectrometer (Thermo Scientific). The peptides were concentrated on-line by reverse phase chromatography using a 0.1 × 20 mm C18 RP precolumn (Thermo Scientific, Rockford, IL, USA) and then separated using a 0.075 × 250 mm C18 RP column (Thermo Scientific) operating at 300 nl/min. Peptides were eluted using a 140-min gradient from 5 to 40% solvent B in solvent A (solvent A: 0.1% formic acid in water; solvent B: 0.1% formic acid in acetonitrile). Electrospray ionization (ESI) was done using a Nano-bore Stainless Steel emitter ID 30 µm (Thermo Scientific) interface.

Peptides were detected in survey scans from 400 to 1600 amu (1  $\mu$ scan), followed by 20 data-dependent MS/MS scans (Top 20), using an isolation width of two mass-to-charge ratio units, normalized collision energy of 35%, and dynamic exclusion applied during 30 s periods.

The MS/MS raw files were searched against a compiled database containing the Uniprot alphaproteobacteria, parasitiformes and *Gallus gallus* databases (11,040,380, 141,928 and 29,484 entries in April 2018, respectively) together with a database created from the predicted secretome and transmembranome of *D. gallinae* (Schicht *et al.*, 2013) using the SEQUEST algorithm (Proteome Discoverer 1.4, Thermo Scientific). The following constraints were used for the searches: tryptic cleavage after Arg and Lys, two maximum missed cleavages, and tolerances of 20 ppm for precursor ions and 0.05 Da for MS/MS fragment ions. The searches were performed allowing variable Met oxidation and Cys carbamidomethylation modifications. Searches were also performed against a decoy database in an integrated decoy approach. Three biological replicates per sample were analysed. A false discovery rate <0.01 was considered as the condition for successful peptide assignments, and at least two peptides per protein in the average of the replicates per sample (including at least one proteotypic peptide) were the necessary condition for protein identification. After discarding host and mite protein assignments, peptides corresponding to the taxonomic class alphaproteobacteria were grouped by genera taxa, and matches that did not reach the genera definition were discarded. The total number of peptide spectrum matches (PSMs) for each bacterial genus was normalized against the total number of PSMs to calculate taxonomic relative abundance at genus level. Raw proteomics data are available through the PeptideAtlas repository (<http://www.peptideatlas.org/>) with the dataset identifier PASS01346.

### Alphaproteobacteria taxonomic assignments and phenotype visualization

A phylogenetic pruned tree associated to a heatmap was constructed to visualize the relative abundance of the peptide assignments (PSMs) corresponding to alphaproteobacteria identifications at genus level. The heatmap and pruned phylogenetic tree were generated with the platform PhyloT (<https://phylo.t.biobyte.de>) based on NCBI taxonomy, and visualized using the Interactive Tree of Life software v4.3 (<https://itol.embl.de/>) (Letunic and Bork, 2011). The alphaproteobacterial taxonomy-to-phenotype mapping was done using the platform METAGENassist (<http://www.metagenassist.ca/METAGENassist/faces/Home.js>) (Arndt *et al.*, 2012). Furthermore, metabolic interpretations of the

**Table 1.** Metaproteomics bacterial assignment at genus level and comparative analysis.

Shared Genera	PSMs	PSMs	PSMs	PSMs
	FA	UA	FN	UN
<i>Acetobacter</i>	4	2	3	3
<i>Aquamicrobium</i>	2	3	4	2
<i>Azospirillum</i>	5	4	4	2
<i>Blastochloris</i>	6	3	4	2
<i>Bosea</i>	6	3	2	2
<i>Bradyrhizobium</i>	19	15	9	7
<i>Candidatus Pelagibacter</i>	2	1	2	2
<i>Caulobacter</i>	1	1	2	2
<i>Celeribacter</i>	2	2	1	1
<i>Devosia</i>	4	3	2	2
<i>Erythrobacter</i>	2	1	1	1
<i>Gluconacetobacter</i>	4	4	3	3
<i>Gluconobacter</i>	3	2	3	5
<i>Hoeflea</i>	3	2	1	1
<i>Hyphomonas</i>	6	3	5	5
<i>Inquillinus</i>	3	1	1	1
<i>Jannaschia</i>	6	5	7	6
<i>Labrenzia</i>	4	4	2	3
<i>Limimonas</i>	2	1	3	2
<i>Magnetospirillum</i>	2	2	2	2
<i>Marinovum</i>	1	2	1	3
<i>Mesorhizobium</i>	5	2	3	3
<i>Methylobacterium</i>	12	13	8	7
<i>Microvirga</i>	8	7	5	4
<i>Neorickettsia</i>	5	4	7	6
<i>Nitrobacter</i>	2	3	1	1
<i>Paracoccus</i>	1	1	1	2
<i>Pelagibacter</i>	3	2	4	6
<i>Phyllobacterium</i>	7	6	7	6
<i>Rhizobium</i>	3	4	4	4
<i>Rhodoplanes</i>	2	3	1	0
<i>Rhodopseudomonas</i>	19	11	10	8
<i>Rhodospirillum</i>	6	5	2	3
<i>Rhodovulum</i>	2	2	1	1
<i>Roseomonas</i>	2	1	1	1
<i>Skermanella</i>	4	4	5	4
<i>Sphingobium</i>	8**	9***	1**	2***
<i>Sphingomonas</i>	14	17	15	13
<i>Sphingopyxis</i>	1	1	2	2
<i>Thalassobaculum</i>	1	1	2	2
<i>Thalassobius</i>	2	3	2	1
<i>Wolbachia</i>	10	7	9	11
Specific Genera	PSMs	PSMs	PSMs	PSMs
	FA	UA	FN	UN
<i>Aureimonas</i>	1	2	0	1
<i>Belnapia</i>	2	2	1	0
<i>Candidatus</i>	2	1	1	0
<i>Puniceispirillum</i>				
<i>Candidatus Tokpelaia</i>	7*	3	1*	0
<i>Ensifer</i>	0	0	2	3
<i>Granulibacter</i>	1	2	0	0
<i>Novosphingobium</i>	2	1	0	0
<i>Parvibaculum</i>	2	0	0	0
<i>Phenyllobacterium</i>	0	0	0	2
<i>Rhodobacter</i>	3	3	0	0
<i>Terasakiella</i>	3	3	0	1
<b>Total</b>	<b>288</b>	<b>188</b>	<b>156</b>	<b>152</b>

Note: The PSMs (average of triplicate samples) matching each genus were normalized against the total number of PSMs and compared using a paired comparison Chi<sup>2</sup>-test ( $P < 0.05$ ) and R software package (R Core Team, 2016). *C. Tokpelaia* were significantly over-represented in fed adults (FA) when compared to fed nymphs (FN) (\* $P = 0.034$ ), and *Sphingobium* spp. were over-represented in fed and unfed adults when compared to fed and unfed nymphs (\*\* $P = 0.035$ , and \*\*\* $P = 0.025$ , respectively). Shared genera are reported when bacterial genera are identified in all groups (FA, UA, FN, UN). Specific genera are reported when bacterial genera are not identified in at least one of the groups (FA, UA, FN, UN).

taxonomy-to-phenotype identifications for each bacteria genera were confirmed using the Kyoto Encyclopedia of Genes and Genomes (KEGG) pathway database (<https://www.genome.jp/kegg/pathway.html>).



## Statistical analysis

The significance of metaproteomics comparative analysis between developmental and feeding stages was calculated by comparing the average amount of PSMs per bacterial genera for each group using a paired comparison Chi<sup>2</sup>-test ( $P < 0.05$ ) and R software package (R Core Team, 2016). Additionally, bacterial genera distribution across the developmental stages and feeding status was visualized based on the Detrended Correspondence Analysis included in the vegan package in R software (Oksanen *et al.*, 2018).

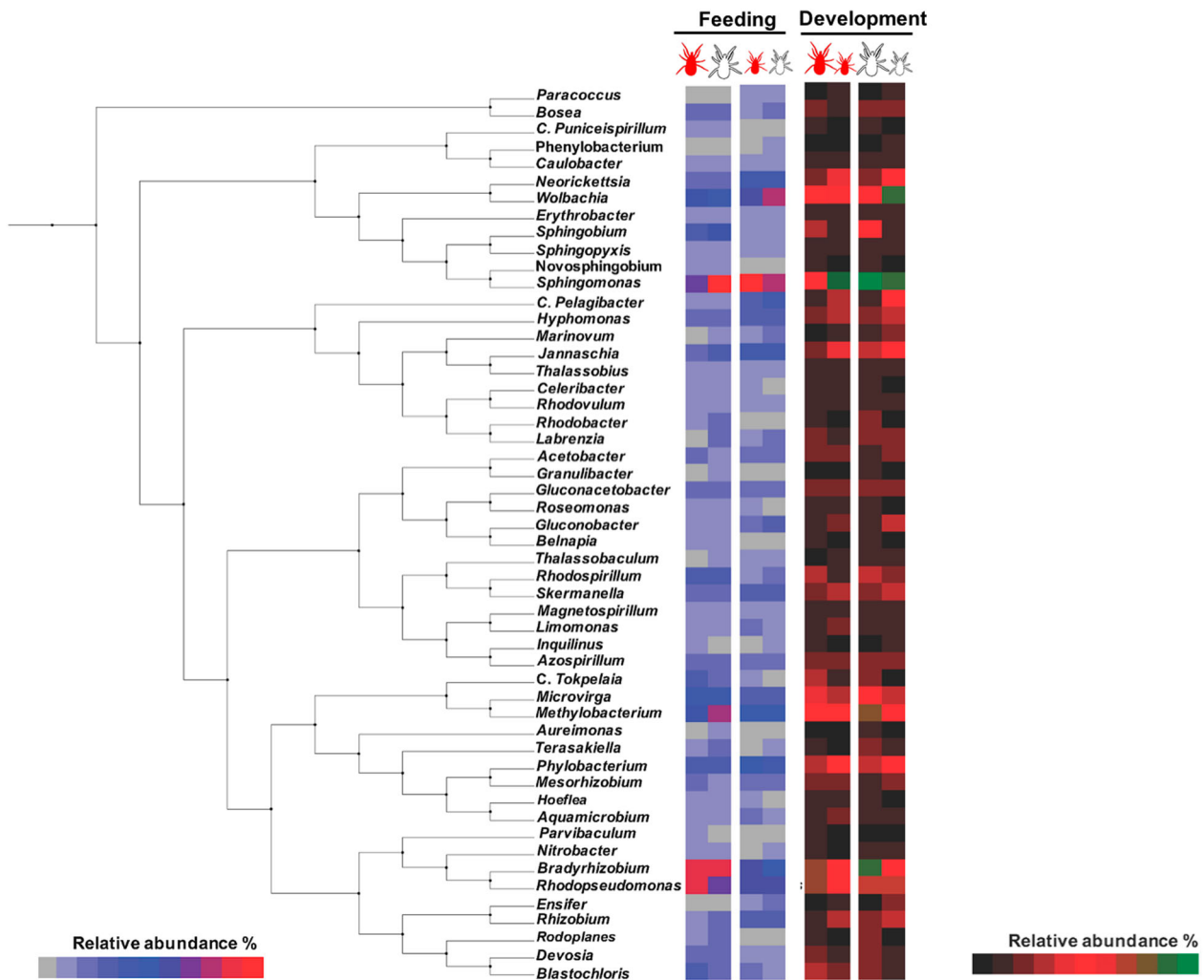
## Results and discussion

### Metaproteomics identification of alphaproteobacteria in the microbiota of *D. gallinae*

The metaproteomics analysis of the PRM resulted in a total of 2837 PSMs that matched with specific bacterial

genera present in the alphaproteobacteria database resulting in the identification of 122 bacterial proteins distributed among 53 genera of the alphaproteobacteria (Supplementary Data 1).

The most represented genus found in the PRM metaproteome was *Sphingomonas* (58 PSMs) followed by *Bradyrhizobium* (51 PSMs), *Rhodopseudomonas* (49 PSMs), *Methylobacterium* (40 PSMs), and *Wolbachia* spp. (38 PSMs). As expected, most of the bacterial genera identified by metaproteomics have been previously described in different arthropods including PRM (Supplementary Table 1). In terms of taxonomic relative abundance, 74% (39 out of 53) of the identified genera have been previously reported as environmental bacteria (Salter *et al.*, 2014; Razzauti *et al.*, 2015; Degli Esposti & Martinez Romero, 2017; Hernández-Jarguín *et al.*, 2018) (Supplementary Table 1). From these environmental bacteria, 20% (8 out of 39) have been identified in several mite species including *D. gallinae*, and 44% (17 out of 39) have also been



**Figure 1.** Phylogenetic and taxonomic abundance analyses at different feeding status and developmental stages. Phylogenetic pruned tree and associated heatmap showing the corresponding peptide assignments (PSMs) at genus level comparing fed (red coloured) to unfed (white coloured) adults and nymphs (Feeding chart) and fed adults vs. fed nymphs (red coloured) and unfed adults vs. unfed nymphs (white coloured) (Development chart). The analysis was done using a Heatmap Tool associated with a pruned phylogenetic tree generated with the platform PhyloT (<http://phyloT.biobyte.de>) based on NCBI taxonomy, and visualized using the Interactive Tree of Life software v3.4.3 (<http://itol.embl.de>). Colour online.

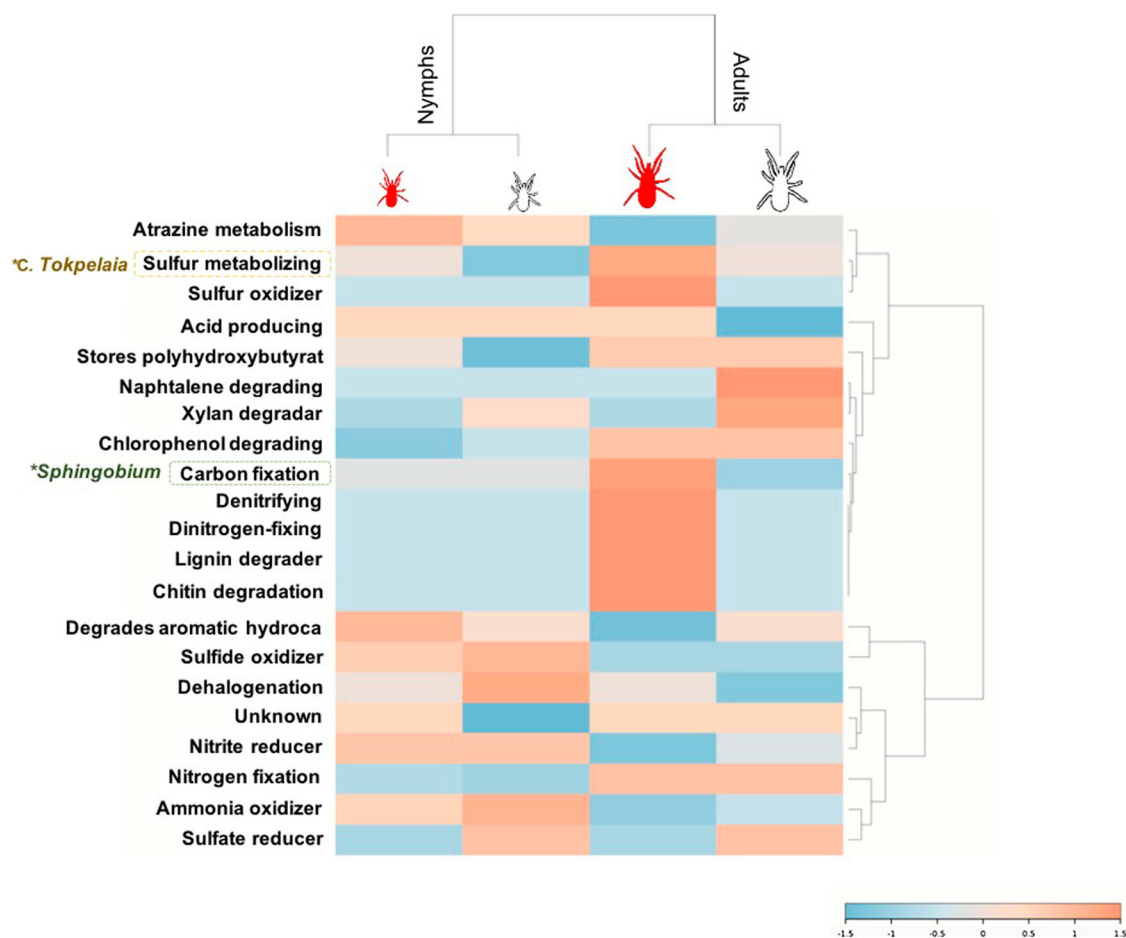
found in arthropods other than mites, and in humans (Supplementary Table 1). These genera are common members of the soil and water microbial communities that might colonize bird breeding sites, and have been described as mite surface contamination (Hubert *et al.*, 2017). Additionally, the genus *Sphingomonas* is commonly found in the microbiota of arthropods such as mites and ticks, suggesting a symbiotic role for these bacteria (Hubert *et al.*, 2015; Gurfield *et al.*, 2017; Hernández-Jarguín *et al.*, 2018). *Wolbachia* spp. have also been described in different arthropods with biological relevance in mites associated to cytoplasmic incompatibility in phytophagous mites (Breeuwer & Jacobs, 1996; Breeuwer, 1997), and fecundity success in predatory mites (Weeks & Stouthamer, 2004).

Bacteria of the *Caulobacter*, *Ensifer*, *Mesorhizobium*, *Rhizobium*, *Phillobacterium*, *Sphingopyxis* and *Wolbachia* genera were identified in PRM by both metagenomics (Hubert *et al.*, 2017) and metaproteomics approaches (Table 1, Figure 1). However, *Bartonella*-like bacteria were previously identified by metagenomics as core microbiota members of *D. gallinae*

(Hubert *et al.*, 2017); nevertheless this genera was not identified herein by metaproteomics. It has been discussed previously that a metaomics approach combining multiple omics technologies provides a better characterization of the tick bacterial microbiome by increasing bacterial identification and support for identified bacteria with putative functional implications (Hernández-Jarguín *et al.*, 2018). However, metaproteomics may result in some peptide assignments that could result in matches that do not reach the genera definition and are therefore discarded for further analysis, a limitation that requires further analyses with amino acid sequences of peptides used for protein identity (Tanca *et al.*, 2014; Fernández de Mera *et al.*, 2017).

### Differences in the profile of alphaproteobacteria in the microbiota associated with development and feeding of *D. gallinae*

Differences in bacterial microbiota composition between developmental stages and feeding status



**Figure 2.** Identified bacterial microbiota phenotype. The bacterial taxonomy-to-phenotype mapping was done using the platform METAGENassist (<http://www.metagenassist.ca/METAGENassist/faces/Home.js>). Heatmaps were generated with genera classified using PSMs relative abundance. The dendrogram was generated using the similarity measure distance Pearson's correlation, and clustering using Ward's linkage algorithm. The heatmap displays an increase and decrease in each metabolic function in terms of genus PSMs relative abundance. Highlighted genera marked with an asterisk showed significant differences in pairwise comparisons (Chi<sup>2</sup>-test,  $P < 0.05$ ) fully disclosed in Table 1.



were observed (Table 1, Figure 1, Supplementary Figure 1). These results are in accordance with previous reports in blood-feeding arthropods (Carpi *et al.*, 2011; Hubert *et al.*, 2017).

After differential analysis by comparing PSMs matching each genus, Candidatus *Tokpelaia* were significantly over-represented in fed adults when compared to fed nymphs ( $P=0.034$ ) and *Sphingobium* spp. were over-represented in fed and unfed adults when compared to fed and unfed nymphs ( $P=0.035$  and  $P=0.025$ , respectively) (Table 1). The genus *C. Tokpelaia* has been found within the gut microbiota of ants and mites with an attributed symbiotic role participating in the urea cycle (Neuvonen *et al.*, 2016; Hubert *et al.*, 2018). Therefore, over-representation of bacteria from this genus in fed adults could be associated with the nitrogen and sulfur metabolism that occurs within the urea cycle after blood feeding (Figure 2). In the same way, bacteria within the genus *Sphingobium* participate in the carbon fixation pathway (Zhang *et al.*, 2012) (Figure 2). Altogether, these results indicate that bacteria in these two genera are differentially represented in response to mite development and feeding and, in turn, could be implicated in facilitating blood digestion in adult mites using sulfur and carbon as energy sources (Figure 2).

### Potentially pathogenic alphaproteobacteria were identified in the microbiota of *D. gallinae*

Other bacterial genera identified in the metaproteome of PRM include some potentially pathogenic species for birds and humans, including *Neorickettsia*, *Inquilinus*, and *Roseomonas* spp. (Dumler *et al.*, 2001; Coenye *et al.*, 2002; Wellinghausen *et al.*, 2005; Degli Esposti & Martinez Romero, 2017) (Table 1, Figure 1, Supplementary Figure 1). Most of these bacteria have been reported in the microbial communities of blood-feeding arthropods, including ticks (Liu *et al.*, 2010; Degli Esposti & Martinez Romero, 2017; Hernández-Jarguín *et al.*, 2018). However, their role as vectors for these bacteria has been only partially characterized in ticks (Hernández-Jarguín *et al.*, 2018).

### Conclusion

The results of this study support the use of metaproteomics for the characterization of alphaproteobacteria associated with the microbiota of *D. gallinae*. Metaproteomics could be used in combination with other methods for a better identification and functional characterization of bacterial genera by a metaomics approach. The results of these studies could provide information relevant for the understanding of mite-

host interactions and the development of potential control interventions.

### Acknowledgements

We thank Dra. Lourdes Mateos (UMR BIPAR, INRA, France) and Dra. Marinela Contreras (IREC, Spain) for laboratory support, and Roxana Triguero (IREC, Spain) for computational support. Sabiotec S. A. did not participate in this research.

### Disclosure statement

No potential conflict of interest was reported by the authors.

### Funding

This work was partially supported by the European Cooperation in Science and Technology (COST), Improving Current Understanding and Research for Sustainable Control of the Poultry Red Mite *Dermanyssus Gallinae*-COREMI Project (Action FA 1404) (<https://www.coremi.eu/home.html>). JFLB was supported by Doctorado Industrial contract (DI-14-06917) from Ministerio de Ciencia, Innovación y Universidades (Spain) and Sabiotec S. A. MV was supported by the University of Castilla-La Mancha (Spain).

### ORCID

José Francisco Lima-Barbero  <http://orcid.org/0000-0002-2694-0215>

Sandra Díaz-Sánchez  <http://orcid.org/0000-0002-7205-3174>

Olivier Sparagano  <http://orcid.org/0000-0003-3141-310X>

Robert D. Finn  <http://orcid.org/0000-0003-0002-9711>

José de la Fuente  <http://orcid.org/0000-0001-7383-9649>

Margarita Villar  <http://orcid.org/0000-0003-4172-9079>

### References

- Arndt, D., Xia, J., Liu, Y., Zhou, Y., Guo, A.C., Cruz, J.A., Sinelnikov, I., Budwill, K., Nesbø, C.L. & Wishart, D.S. (2012). METAGENassist: a comprehensive web server for comparative metagenomics. *Nucleic Acids Research*, 40, W88–W95.
- Breeuwer, J.A.J. & Jacobs, G. (1996). Wolbachia: intracellular manipulators of mite reproduction. *Experimental & Applied Acarology*, 20, 421–434.
- Breeuwer, J.A. (1997). Wolbachia and cytoplasmic incompatibility in the spider mites *Tetranychus urticae* and *T. turkestanus*. *Heredity*, 79, 41–47.
- Cafiero, M., Camarda, A., Circella, E., Santagada, G., Schino, G. & Lomuto, M. (2008). Pseudoscabies caused by *Dermanyssus gallinae* in Italian city dwellers: a new setting for an old dermatitis. *Journal of the European Academy of Dermatology and Venereology*, 22, 1382–1383.
- Carpi, G., Cagnacci, F., Wittekindt, N.E., Zhao, F., Qi, J., Tomsho, L.P., Drautz, D.I., Rizzoli, A. & Schuster, S.C. (2011). Metagenomic profile of the bacterial communities associated with *Ixodes ricinus* ticks. *PLoS One*, 6, e25604.
- Chandler, J.A., Liu, R.M. & Bennett, S.N. (2015). RNA shotgun metagenomic sequencing of northern California (USA) mosquitoes uncovers viruses, bacteria, and fungi. *Frontiers in Microbiology*, 06, 185.

- Chauve, C. (1998). The poultry red mite *Dermanyssus gallinae* (De Geer, 1778): current situation and future prospects for control. *Veterinary Parasitology*, 79, 239–245.
- Ciolca, A., Tanase, I. & May, I. (1968). Role of the poultry red mite, *Dermanyssus gallinae*, in the transmission of spirochaetosis. *Archivum Veterinarium Polonicum*, 5, 207–215.
- Coenye, T., Goris, J., Spilker, T., Vandamme, P. & LiPuma, J.J. (2002). Characterization of unusual bacteria isolated from respiratory secretions of cystic fibrosis patients and description of *Inquilinus limosus* gen. nov., sp. nov. *Journal of Clinical Microbiology*, 40, 2062–2069.
- Cosoroaba, I. (2001). Massive *Dermanyssus gallinae* invasion in battery-husbandry raised fowls. *Revue de Medecine Veterinaire (France)*, 152, 89–96.
- De Luna, C.J., Moro, C.V., Guy, J.H., Zenner, L. & Sparagano, O.A.E. (2009). Endosymbiotic bacteria living inside the poultry red mite (*Dermanyssus gallinae*). *Experimental and Applied Acarology*, 48, 105–113.
- Degli Esposti, M. & Martinez Romero, E. (2017). The functional microbiome of arthropods. *PLoS One*, 12, e0176573.
- Dumler, J.S., Barbet, A.F., Bekker, C., Dasch, G.A., Palmer, G.H., Ray, S.C., Rikihisa, Y. & Rurangirwa, F.R. (2001). Reorganization of genera in the families Rickettsiaceae and Anaplasmataceae in the order Rickettsiales: unification of some species of *Ehrlichia* with *Anaplasma*, *Cowdria* with *Ehrlichia* and *Ehrlichia* with *Neorickettsia*, descriptions of six new species combinations and designation of *Ehrlichia equi* and “HGE agent” as subjective synonyms of *Ehrlichia phagocytophila*. *International Journal of Systematic and Evolutionary Microbiology*, 51, 2145–2165.
- Durden, L.A., Linthicum, K.J. & Monath, T.P. (1993). Laboratory transmission of Eastern Equine Encephalomyelitis virus to chickens by chicken mites (Acari: Dermansyssidae). *Journal of Medical Entomology*, 30, 281–285.
- Fernández de Mera, I.G., Chaligiannis, I., Hernández-Jarguín, A., Villar, M., Mateos-Hernández, L., Papa, A., Sotiraki, S., Ruiz-Fons, F., Cabezas-Cruz, A., Gortázar, C. & de la Fuente, J. (2017). Combination of RT-PCR and proteomics for the identification of Crimean-Congo hemorrhagic fever virus in ticks. *Heliyon*, 3, e00353.
- George, D.R., Finn, R.D., Graham, K.M., Mul, M.F., Maurer, V., Moro, C.V. & Sparagano, O.A. (2015). Should the poultry red mite *Dermanyssus gallinae* be of wider concern for veterinary and medical science? *Parasites & Vectors*, 8, 178.
- Greay, T.L., Gofton, A.W., Papparini, A., Ryan, U.M., Oskam, C.L. & Irwin, P.J. (2018). Recent insights into the tick microbiome gained through next-generation sequencing. *Parasites & Vectors*, 11, 12.
- Gurfield, N., Grewal, S., Cua, L.S., Torres, P.J. & Kelley, S.T. (2017). Endosymbiont interference and microbial diversity of the Pacific coast tick, *Dermacentor occidentalis*, in San Diego County, California. *Peer Journal*, 13, e3202.
- Hernández-Jarguín, A., Díaz-Sánchez, S., Villar, M. & de la Fuente, J. (2018). Integrated metatranscriptomics and metaproteomics for the characterization of bacterial microbiota in unfed *Ixodes ricinus*. *Ticks and Tick-Borne Diseases*, 9, 1241–1251.
- Hubert, J., Erban, T., Kamler, M., Kopecky, J., Nesvorna, M., Hejdankova, S., Titera, D., Tyl, J. & Zurek, L. (2015). Bacteria detected in the honeybee parasitic mite *Varroa destructor* collected from beehive winter debris. *Journal of Applied Microbiology*, 119, 640–654.
- Hubert, J., Erban, T., Kopecky, J., Sopko, B., Nesvorna, M., Lichovnikova, M., Schicht, S., Strube, C. & Sparagano, O. (2017). Comparison of microbiomes between red poultry mite populations (*Dermanyssus gallinae*): predominance of *Bartonella*-like bacteria. *Microbial Ecology*, 74, 947–960.
- Hubert, J., Nesvorna, M., Sopko, B., Smrz, J., Klimov, P. & Erban, T. (2018). Two populations of mites (*Tyrophagus putrescentiae*) differ in response to feeding on feces-containing diets. *Frontiers in Microbiology*, 9, 2590.
- Huong, C.T.T., Murano, T., Uno, Y., Usui, T. & Yamaguchi, T. (2014). Molecular detection of avian pathogens in poultry red mite (*Dermanyssus gallinae*) collected in chicken farms. *Journal of Veterinary Medical Science*, 76, 1583–1587.
- Kilpinen, O. (2001). Activation of the poultry red mite, *Dermanyssus gallinae* (Acari: Dermansyssidae), by increasing temperatures. *Experimental & Applied Acarology*, 25, 859–867.
- Letunic, I. & Bork, P. (2011). Interactive tree of life v2: online annotation and display of phylogenetic trees made easy. *Nucleic Acids Research*, 39, W475–W478.
- Liu, W., Zhang, F., Qiu, E.C., Yang, J., Xin, Z.T., Wu, X.M., Tang, F., Yang, H. & Cao, W.C. (2010). *Roseomonas* sp. isolated from ticks, China. *Emerging Infectious Diseases*, 16, 1177–1178.
- Neelakanta, G. & Sultana, H. (2013). The use of metagenomic approaches to analyze changes in microbial communities. *Microbiology Insights*, 6, 37–48.
- Neuvonen, M.M., Tamarit, D., Näslund, K., Liebig, J., Feldhaar, H., Moran, N.A., Guy, L. & Andersson, S.G. (2016). The genome of Rhizobiales bacteria in predatory ants reveals urease gene functions but no genes for nitrogen fixation. *Scientific Reports*, 6, 39197.
- Oksanen, J., Blanchet, F.G., Friendly, M., Kindt, R., Legendre, P., McGlenn, D., Minchin, P.R., ÓHara, R.B., Simpson, G.L., Solymos, P., Stevens, M.H.H., Szoecs, E. & Wagner, H. (2018). vegan: Community Ecology Package. R package version 2.5-2 <https://CRAN.R-project.org/package=vegan>.
- Petrov, D. (1975). Study of *Dermanyssus gallinae* as a carrier of *Pasteurella multocida*. *Veterinarno-Meditsinski Nauki*, 12, 32–36.
- Pezzi, M., Leis, M., Chicca, M. & Roy, L. (2017). Gamasoidosis caused by the special lineage L1 of *Dermanyssus gallinae* (Acarina: Dermansyssidae): a case of heavy infestation in a public place in Italy. *Parasitology International*, 66, 666–670.
- R Core Team. (2016). *R: A Language and Environment for Statistical Computing*. Vienna: R Foundation for Statistical Computing. <http://www.R-project.org>.
- Razzauti, M., Galan, M., Bernard, M., Maman, S., Klopp, C., Charbonnel, N., Vayssier-Taussat, V., Eloit, M. & Cosson, J.F. (2015). A comparison between transcriptome sequencing and 16S metagenomics for detection of bacterial pathogens in wildlife. *PLoS Neglected Tropical Diseases*, 9, e0003929.
- Roy, L., Dowling, A.P.G., Chauve, C.M. & Buronfosse, T. (2009a). Delimiting species boundaries within *Dermanyssus Duges*, 1834 (Acari: Dermansyssidae) using a total evidence approach. *Molecular Phylogenetics and Evolution*, 50, 446–470.
- Roy, L., Dowling, A.P.G., Chauve, C.M., Lesna, I., Sabelis, M.W. & Buronfosse, T. (2009b). Molecular phylogenetic assessment of host range in five *Dermanyssus* species. *Experimental and Applied Acarology*, 48, 115–142.
- Salter, S.J., Cox, M.J., Turek, E.M., Calus, S.T., Cookson, W.O., Moffatt, M.F., Turner, P., Parkhill, J., Loman, N.J. & Walker, A.W. (2014). Reagent and laboratory

- contamination can critically impact sequence-based microbiome analyses. *BMC Biology*, 12, 87.
- Schicht, S., Qi, W., Poveda, L. & Strube, C. (2013). The predicted secretome and transmembranome of the poultry red mite *Dermanyssus gallinae*. *Parasites & Vectors*, 6, 259.
- Shevchenko, A., Tomas, H., Havli, J., Olsen, J.V. & Mann, M. (2007). In-gel digestion for mass spectrometric characterization of proteins and proteomes. *Nature Protocols*, 1, 2856–2860.
- Shirinov, F.B., Ibragimova, A.I. & Misirov, Z.G. (1972). Spread of fowl pox virus by the mite *Dermanyssus gallinae*. *Veterinariya (Moscow)*, 4, 48–49.
- Sikes, R.K. & Chamberlain, R.W. (1955). Laboratory Investigations on the role of bird mites in the transmission of eastern and western equine encephalitis 1. *The American Journal of Tropical Medicine and Hygiene*, 4, 106–118.
- Sommer, D., Heffels-Redmann, U., Köhler, K., Lierz, M. & Kaleta, E.F. (2016). Role of the poultry red mite (*Dermanyssus gallinae*) in the transmission of avian influenza A virus. *Tierärztliche Praxis Großtiere*, 1, 47–54.
- Swei, A. & Kwan, J.Y. (2017). Tick microbiome and pathogen acquisition altered by host blood meal. *The ISME Journal*, 11, 813–816.
- Tanca, A., Palomba, A., Pisanu, S., Deligios, M., Fraumene, C., Manghina, V., Pagnozzi, D., Addis, M.F. & Uzzau, S. (2014). A straightforward and efficient analytical pipeline for metaproteome characterization. *Microbiome*, 2, 49.
- Valiente Moro, C., Chauve, C. & Zenner, L. (2005). Vectorial role of some dermanysoid mites (Acari, Mesostigmata, Dermanyssoidea). *Parasite*, 12, 99–109.
- Valiente Moro, C., Chauve, C. & Zenner, L. (2007). Experimental infection of *Salmonella enteritidis* by the poultry red mite, *Dermanyssus gallinae*. *Veterinary Parasitology*, 146, 329–336.
- Valiente Moro, C., De Luna, C.J., Tod, A., Guy, J.H., Sparagano, O.A.E. & Zenner, L. (2009a). The poultry red mite (*Dermanyssus gallinae*): a potential vector of pathogenic agents. *Experimental and Applied Acarology*, 48, 93–104.
- Valiente Moro, C., Thioulouse, J., Chauve, C., Normand, P. & Zenner, L. (2009b). Bacterial taxa associated with the hematophagous mite *Dermanyssus gallinae* detected by 16S rRNA PCR amplification and TTGE fingerprinting. *Research in Microbiology*, 160, 63–70.
- Villar, M., Popara, M., Mangold, A.J. & de la Fuente, J. (2014). Comparative proteomics for the characterization of the most relevant *Amblyomma* tick species as vectors of zoonotic pathogens worldwide. *Journal of Proteomics*, 105, 204–216.
- Walker, D.H. (2017). Rickettsia. In *International Encyclopedia of Public Health* (pp. 370–377). Second Edition. Quah: Academic Press.
- Weeks, A.R. & Stouthamer, R. (2004). Increased fecundity associated with infection by a Cytophaga-like intracellular bacterium in the predatory mite, *Metaseiulus occidentalis*. *Proceedings of the Royal Society of London. Series B: Biological Sciences*, 271 Suppl 4: S193-5.
- Wellinghausen, N., Essig, A. & Sommerburg, O. (2005). *Inquilius limosus* in patients with cystic fibrosis, Germany. *Emerging Infectious Diseases*, 11, 457–459.
- Zemskaya, A. & Pchelkina, A. (1967). Gamasoid mites and Q fever. In Markevich (Ed.), *Problemy Parazitologii* (pp. 289–259). Kiev.
- Zhang, J., Lang, Z.F., Zheng, J.W., Hang, B.J., Duan, X.Q., He, J. & Li, S.P. (2012). *Sphingobium jiangsuense* sp. nov., a 3-phenoxybenzoic acid-degrading bacterium isolated from a wastewater treatment system. *International Journal of Systematic and Evolutionary Microbiology*, 62, 800–805.