


July 2019

Gage County Preliminary Ground Water Study (GM-20): Reed, E.C. Conservation and Survey Division , size 8.5" X 11"

E.C. Reed

University of Nebraska-Lincoln

Follow this and additional works at: <https://digitalcommons.unl.edu/conservationsurvey>

 Part of the [Geology Commons](#), [Geomorphology Commons](#), [Hydrology Commons](#), [Paleontology Commons](#), [Sedimentology Commons](#), [Soil Science Commons](#), and the [Stratigraphy Commons](#)

Reed, E.C., "Gage County Preliminary Ground Water Study (GM-20): Reed, E.C. Conservation and Survey Division , size 8.5" X 11". (2019). *Conservation and Survey Division*. 668.

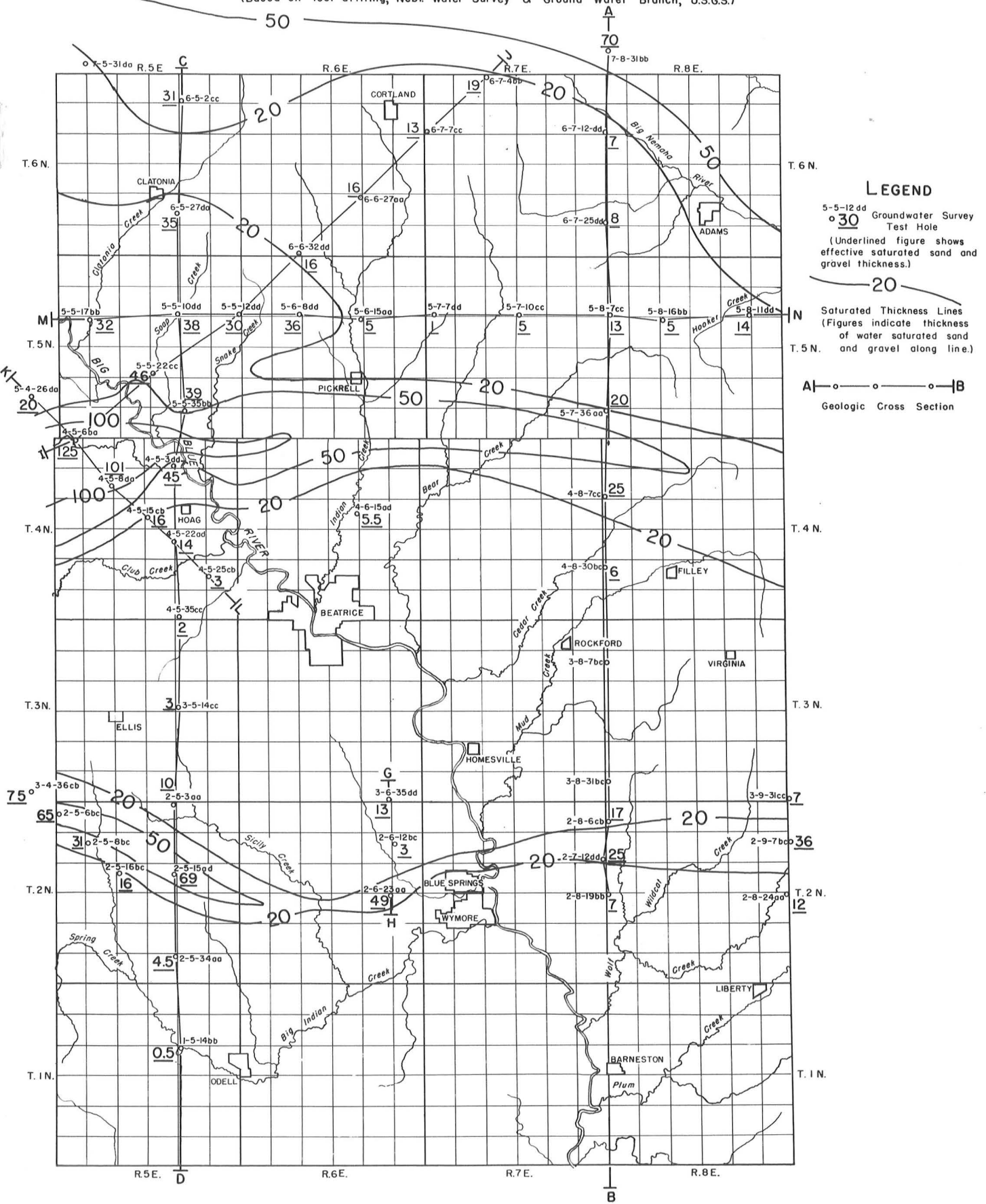
<https://digitalcommons.unl.edu/conservationsurvey/668>

This Article is brought to you for free and open access by the Natural Resources, School of at DigitalCommons@University of Nebraska - Lincoln. It has been accepted for inclusion in Conservation and Survey Division by an authorized administrator of DigitalCommons@University of Nebraska - Lincoln.

GAGE COUNTY

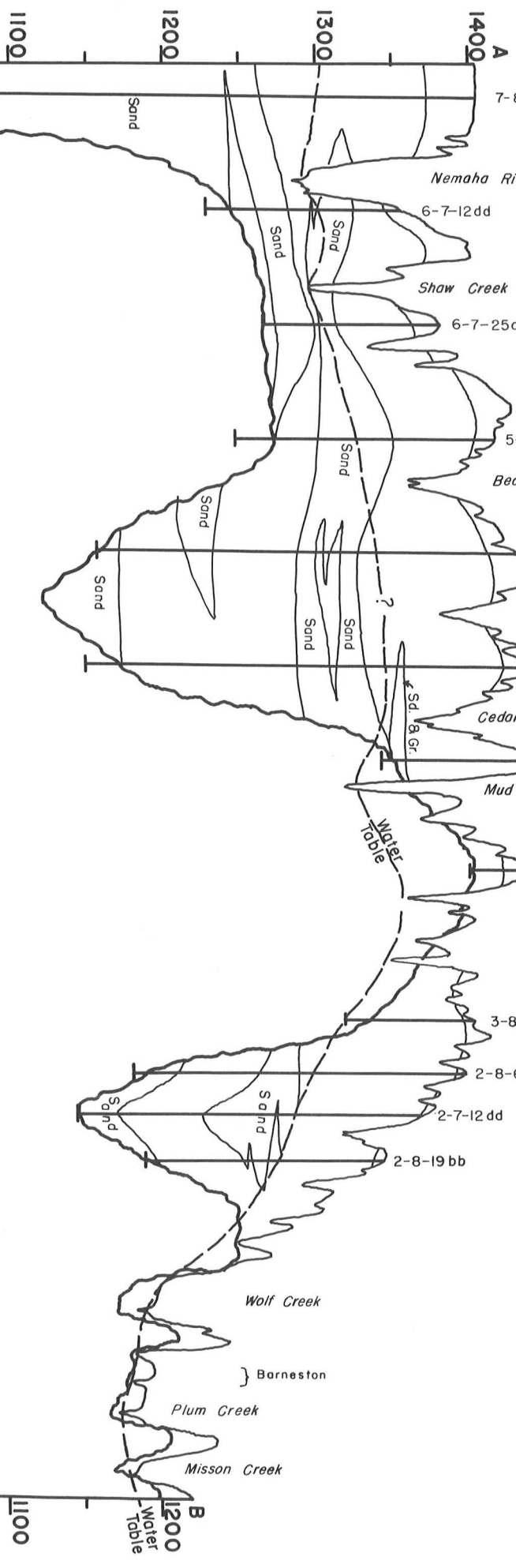
Figure 1

Ground water map showing thickness of water saturated sand and gravel.
(Based on test drilling, Nebr. Water Survey & Ground Water Branch, U.S.G.S.)



NORTH

SOUTH



Lancaster Co.
Gage Co.

T. 6 N.

T. 5 N.

T. 4 N.

T. 3 N.

T. 2 N.

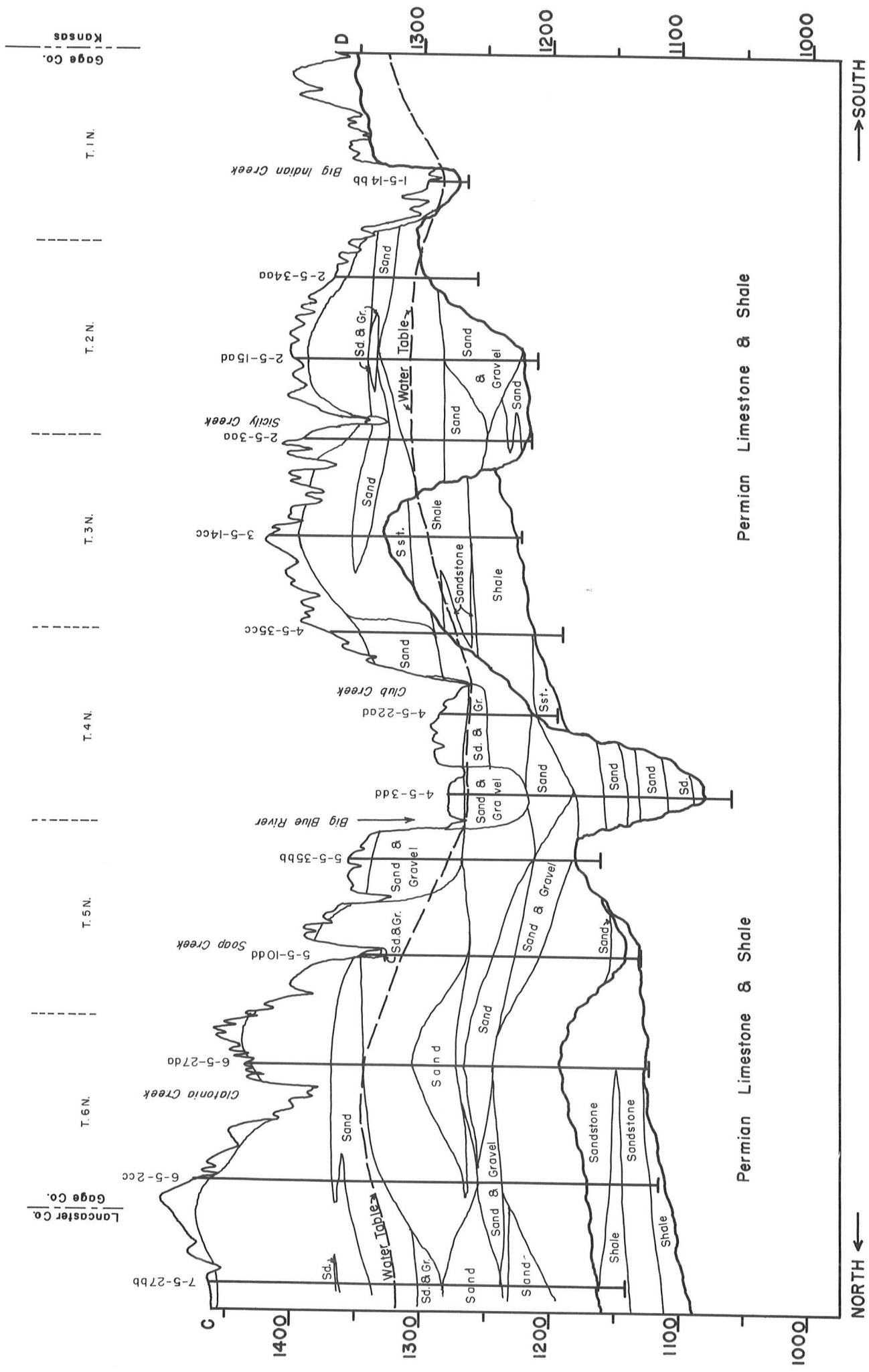
T. 1 N.

Gage Co.
Kansas

GAGE COUNTY

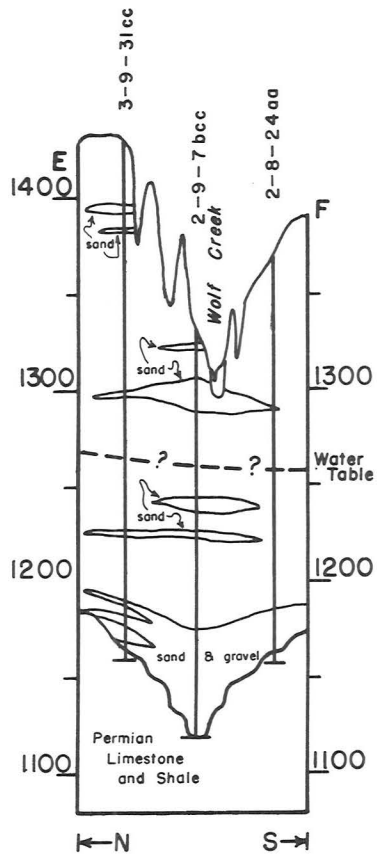
1005-1

GAGE COUNTY

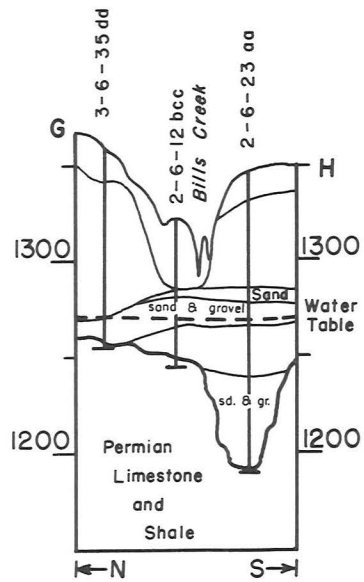


GAGE COUNTY

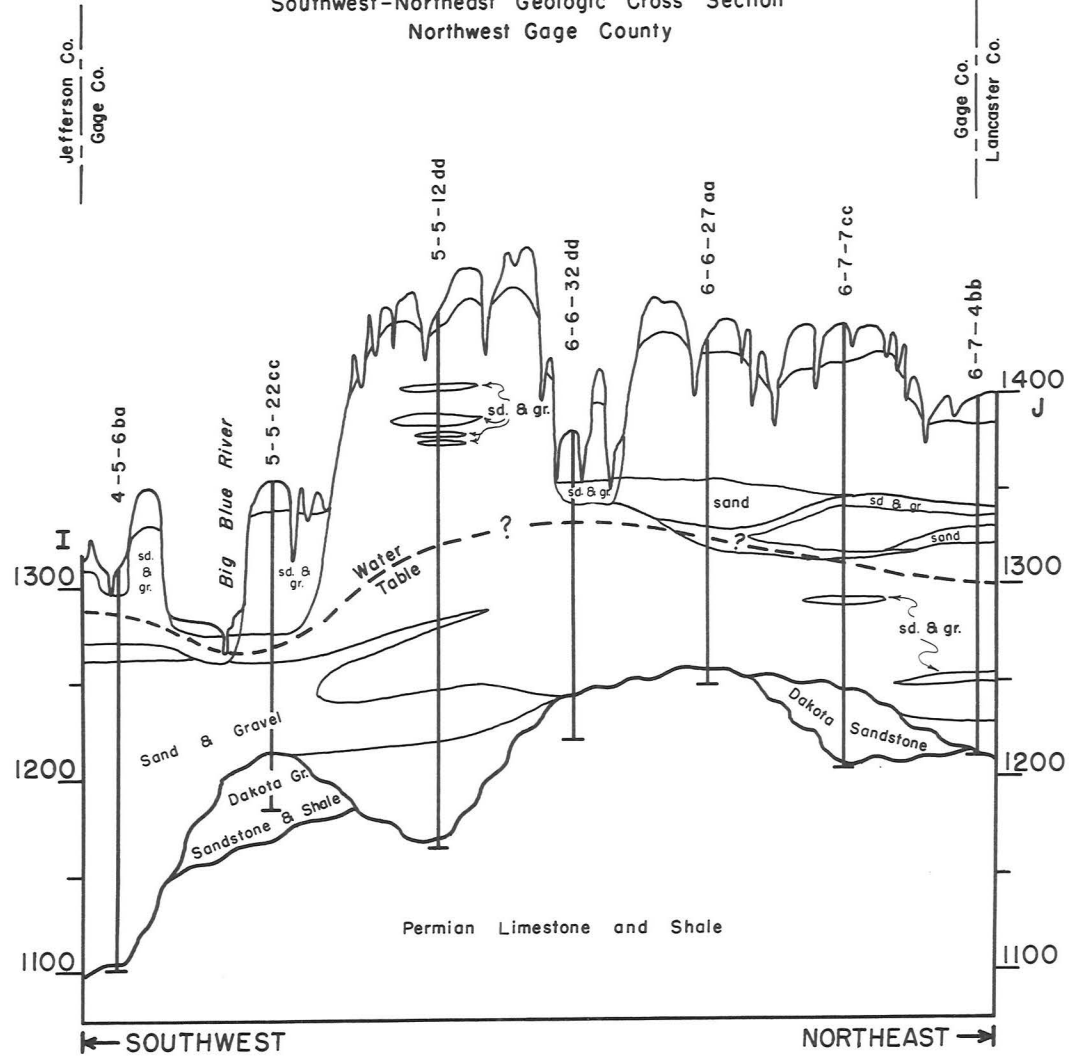
North-South Geologic Cross Section
Gage-Pawnee County Line, Southern
Gage County



North-South Geologic Cross Section
South-Central Gage County

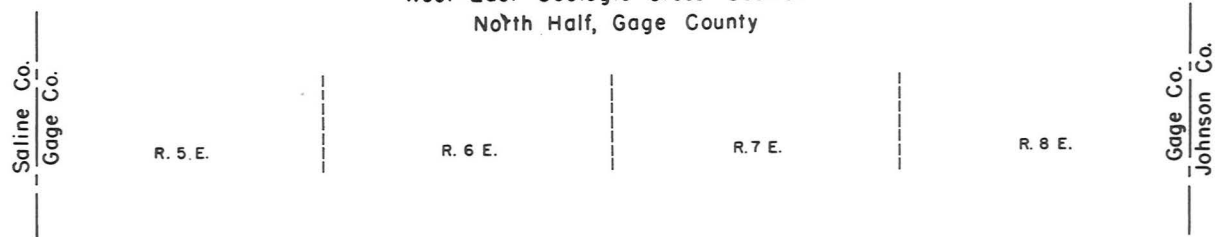


Southwest-Northeast Geologic Cross Section
Northwest Gage County



GAGE COUNTY

West-East Geologic Cross Section North Half, Gage County



Northwest- Southeast Geologic Cross Section West-Central, Gage Co.

