


1947

Thayer County Preliminary Ground Water Study 1947 (GM-33): Reed, E.C. Conservation and Survey Division , size 8.5" X 11".

E.C. Reed

University of Nebraska-Lincoln

Follow this and additional works at: <https://digitalcommons.unl.edu/conservationsurvey>

 Part of the [Geology Commons](#), [Geomorphology Commons](#), [Hydrology Commons](#), [Paleontology Commons](#), [Sedimentology Commons](#), [Soil Science Commons](#), and the [Stratigraphy Commons](#)

Reed, E.C., "Thayer County Preliminary Ground Water Study 1947 (GM-33): Reed, E.C. Conservation and Survey Division , size 8.5" X 11"." (1947). *Conservation and Survey Division*. 667.

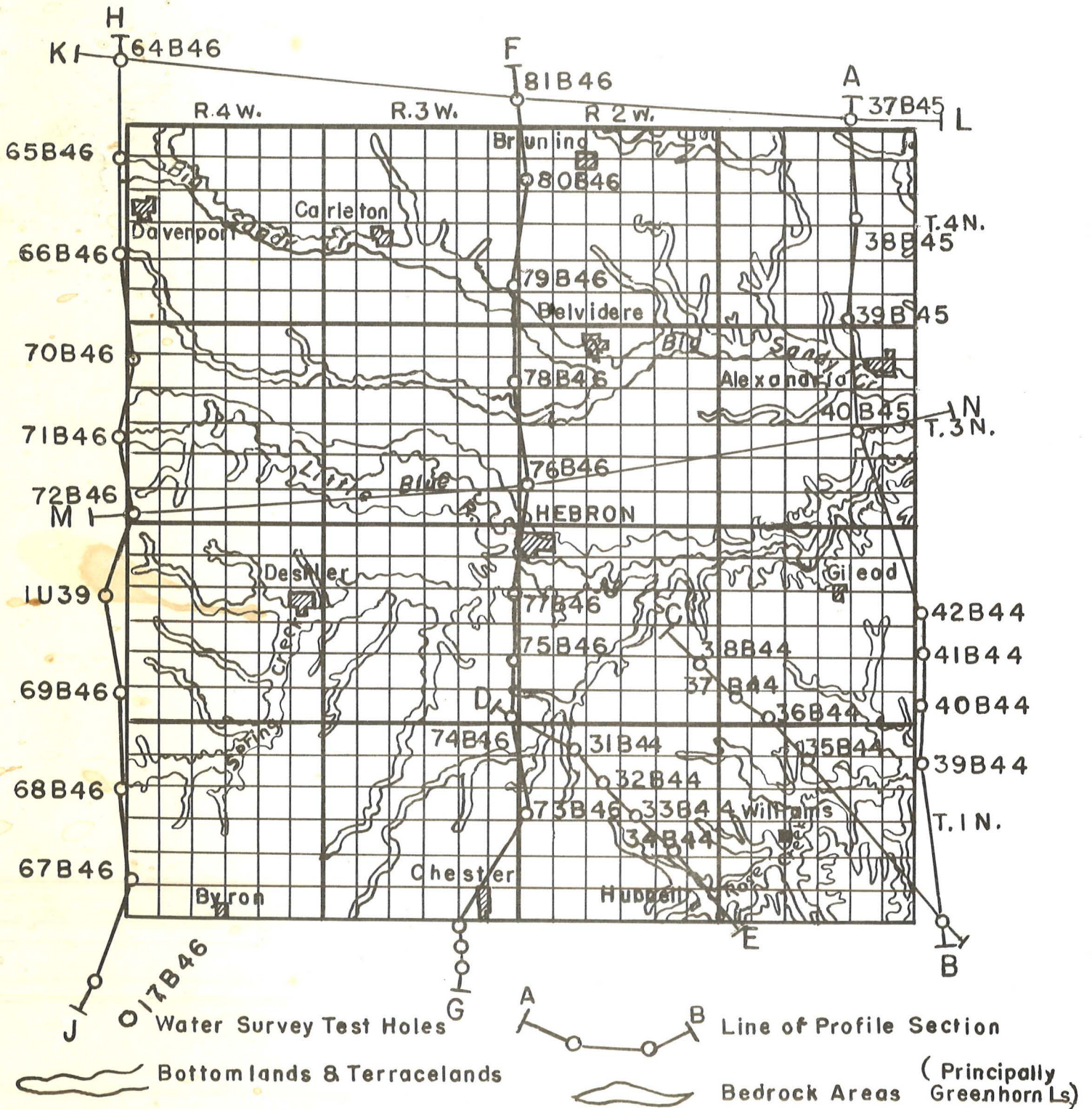
<https://digitalcommons.unl.edu/conservationsurvey/667>

This Article is brought to you for free and open access by the Natural Resources, School of at DigitalCommons@University of Nebraska - Lincoln. It has been accepted for inclusion in Conservation and Survey Division by an authorized administrator of DigitalCommons@University of Nebraska - Lincoln.

THAYER COUNTY

FIGURE 1

Showing Location of Test Holes and Profile Sections



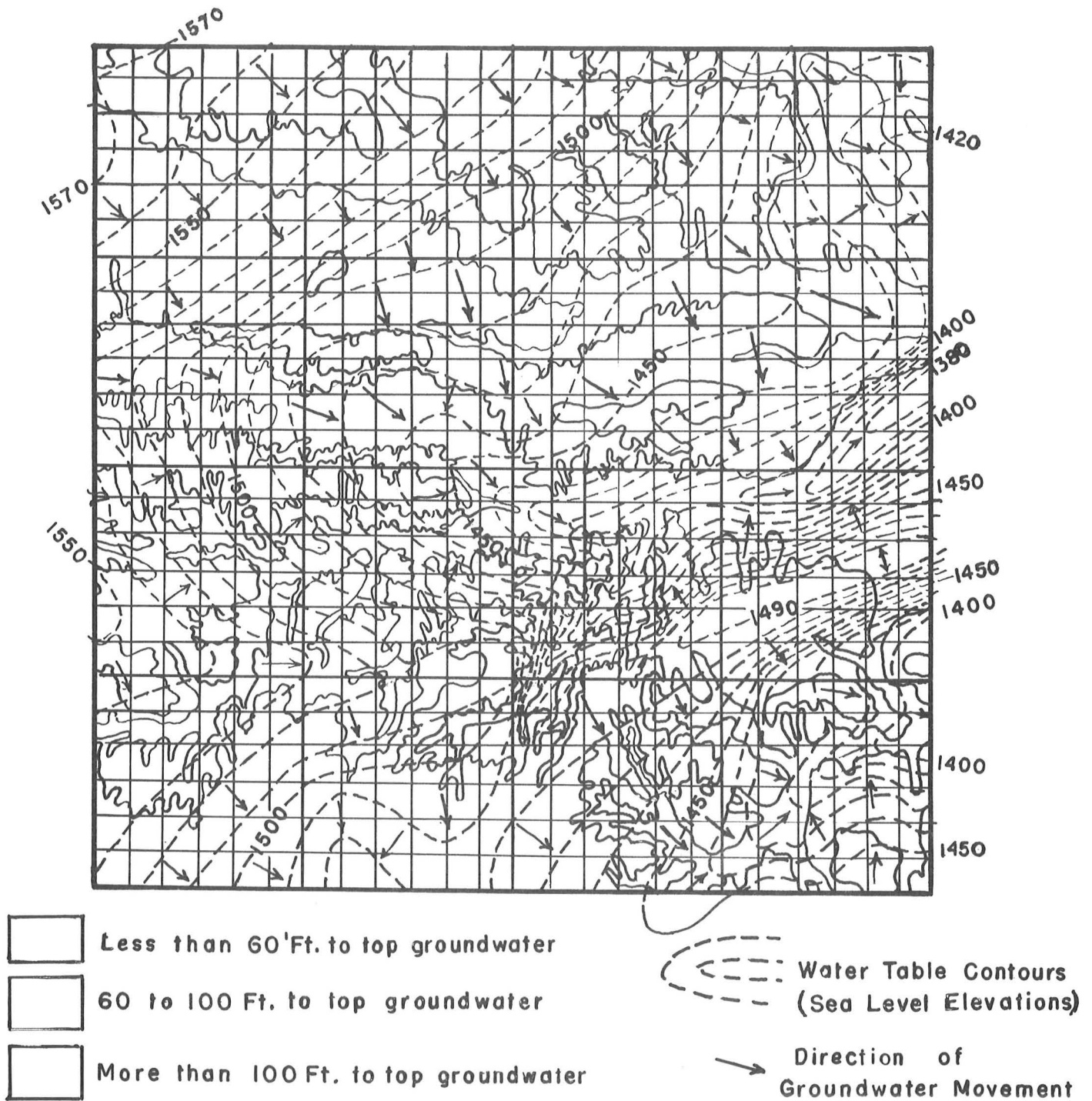
Prepared by E.C. Reed
April 1, 1947

Conservation & Survey Division
Univ. of Nebraska

THAYER COUNTY

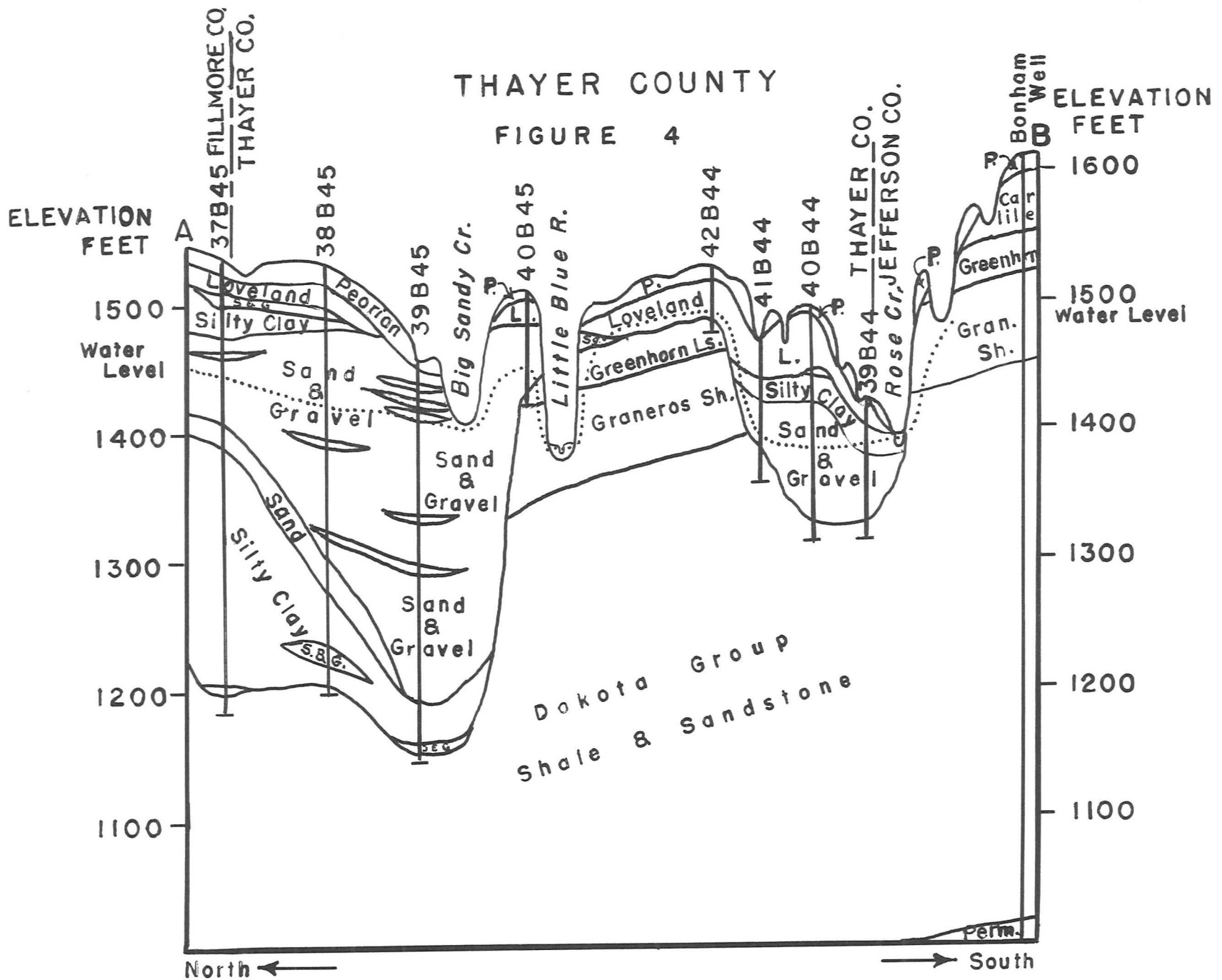
FIGURE 3

Depth to Water and
Water Table Contour Map



Prepared by E.C. Reed
April 1, 1947

Conservation & Survey Division
Univ. of Nebraska



Prepared by E.C. Reed

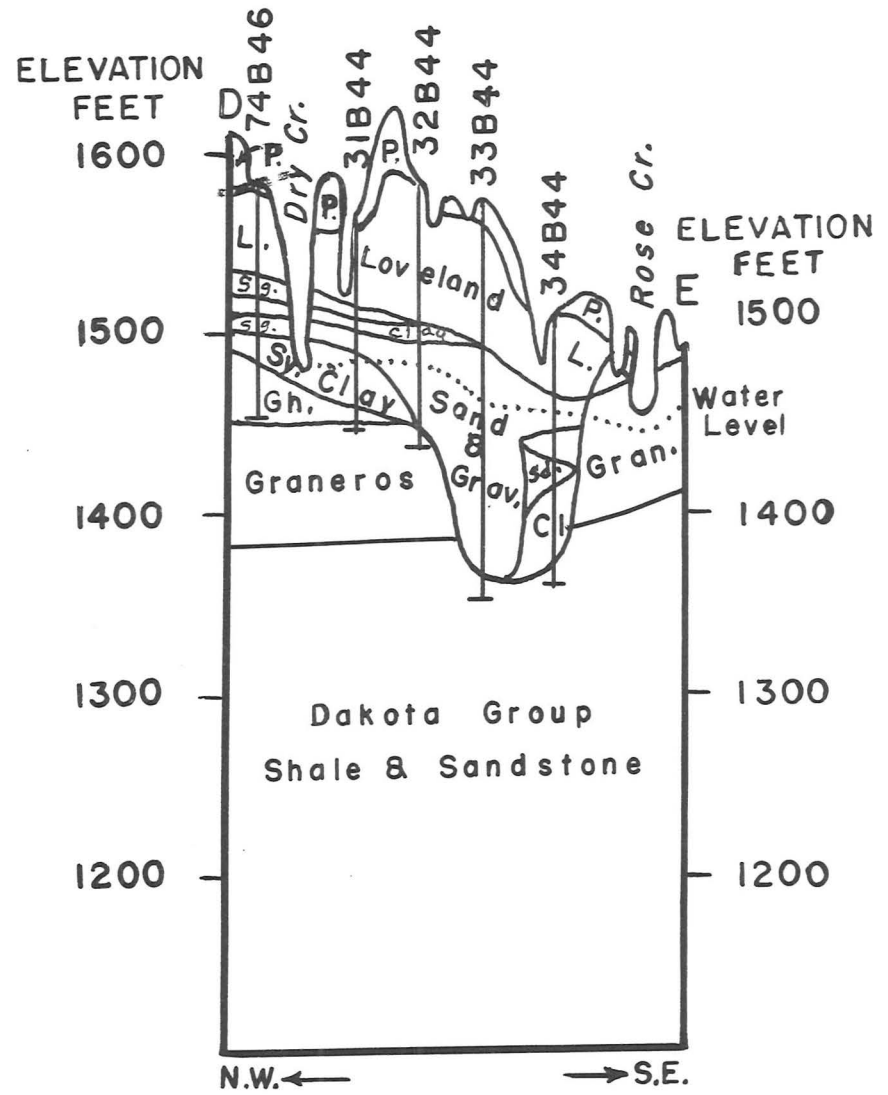
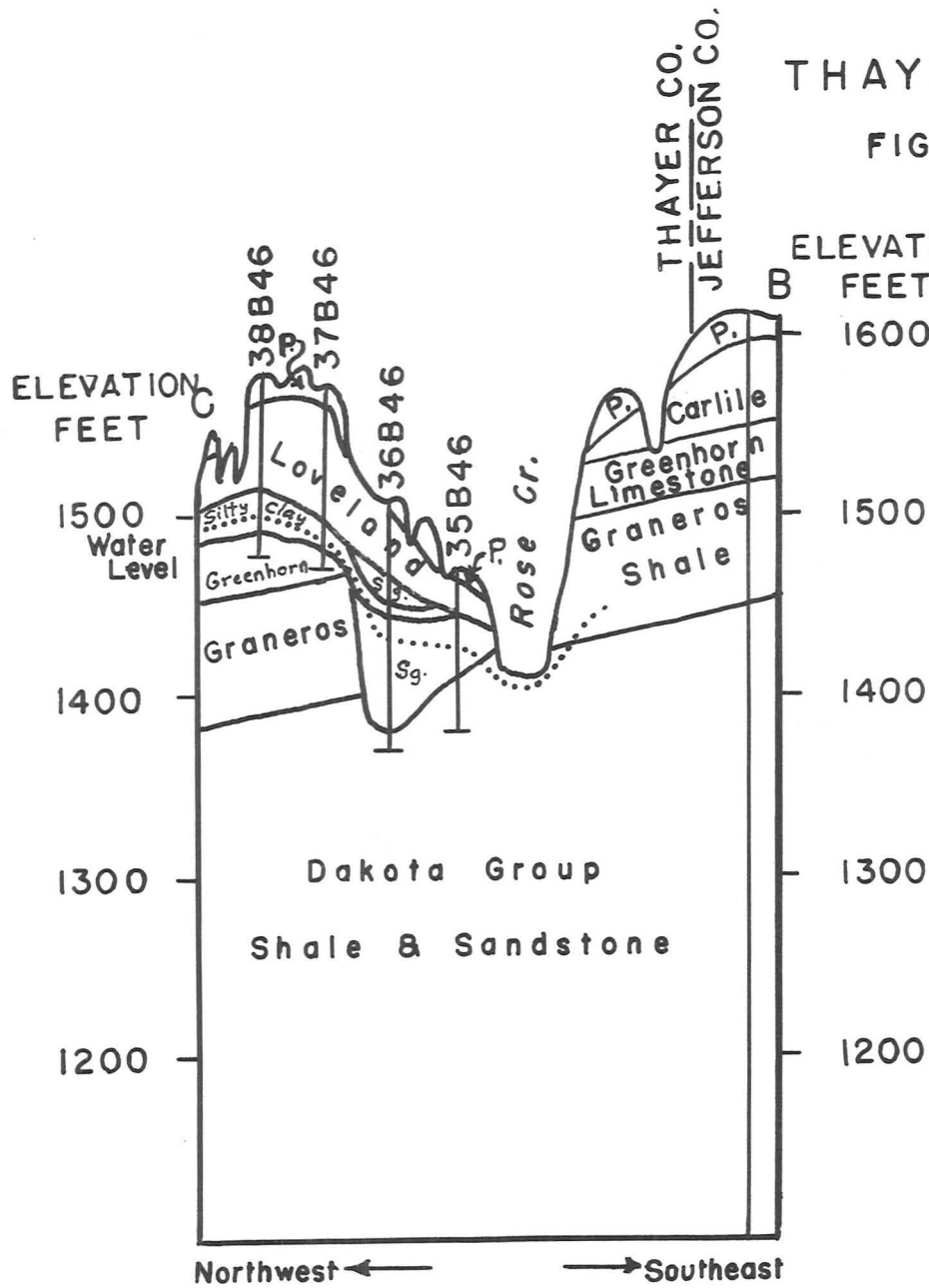
April 1, 1947

Conservation & Survey Division

Univ. of Nebraska

THAYER COUNTY

FIGURE 5



Prepared by E.C.Reed

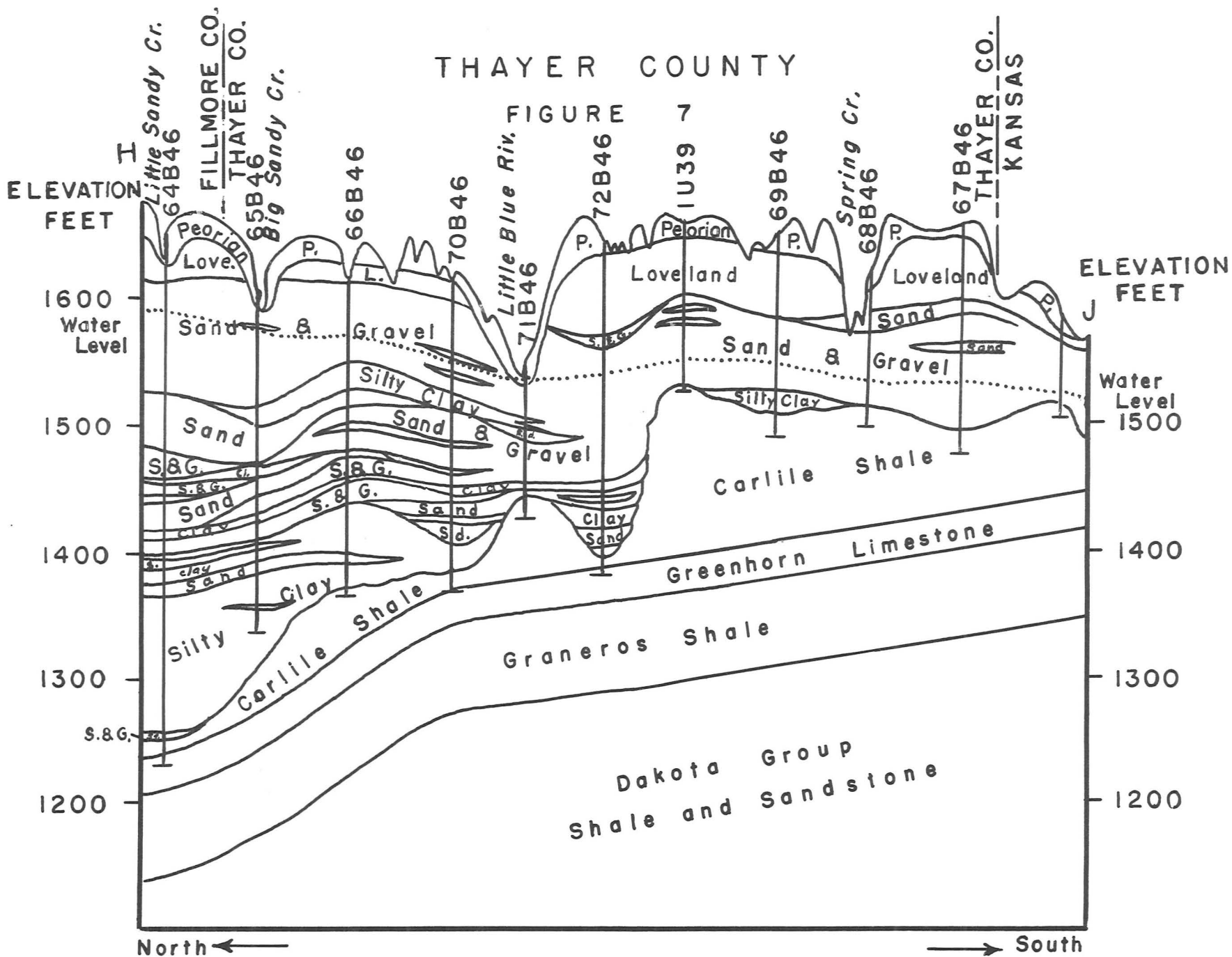
April 1, 1947

Conservation & Survey Division

Univ. of Nebraska

THAYER COUNTY

FIGURE 7



Prepared by E.C. Reed

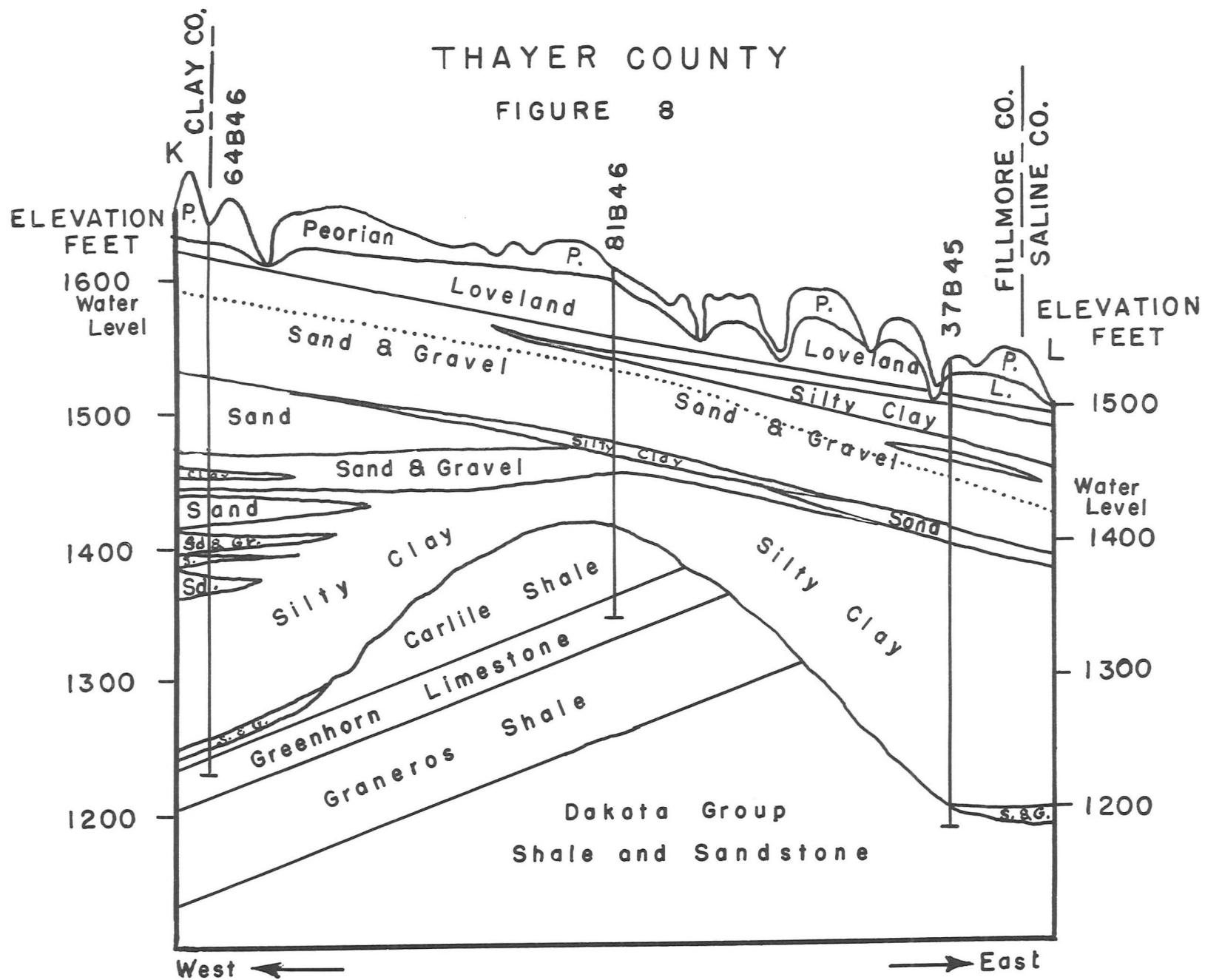
April 1, 1947

Conservation & Survey Division

Univ. of Nebraska

THAYER COUNTY

FIGURE 8



Prepared by E.C.Reed
April 1, 1947

Conservation & Survey Division
Univ. of Nebraska

THAYER COUNTY

FIGURE 9

