


1957

Northeastern Cherry and Western Keya Paha
County Preliminary Ground Water Study 1957
(GM-26): Reed, E.C. Conservation and Survey
Division , size 8.5" X 11".

E.C. Reed

University of Nebraska - Lincoln

Follow this and additional works at: <https://digitalcommons.unl.edu/conservationsurvey>

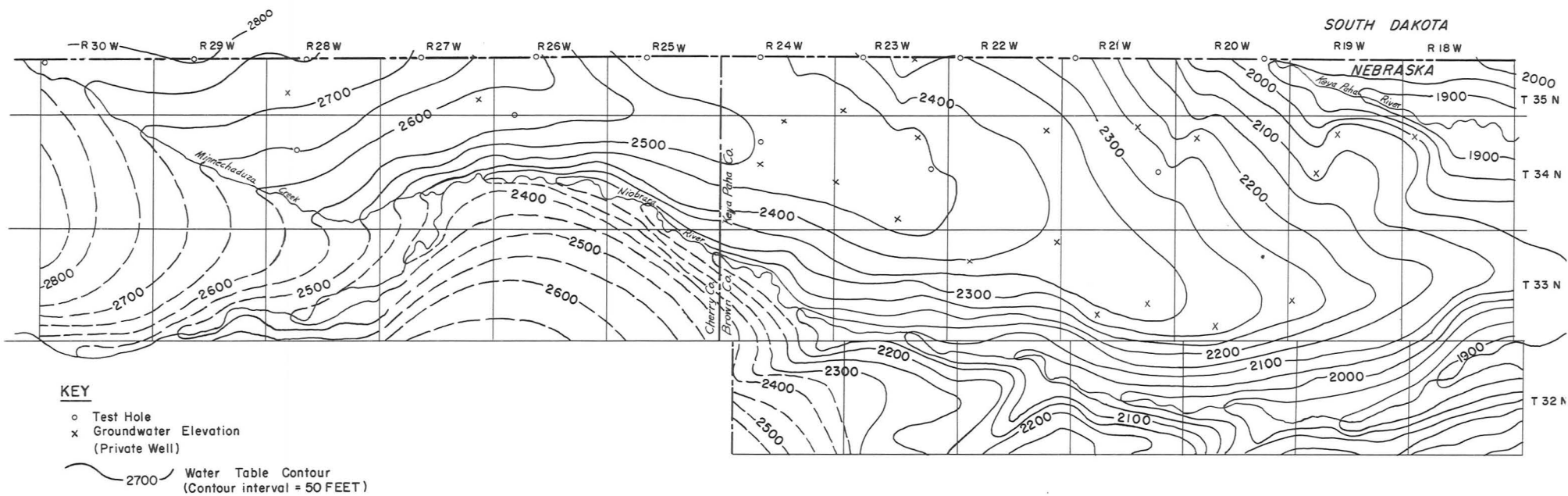
 Part of the [Geology Commons](#), [Geomorphology Commons](#), [Hydrology Commons](#),
[Paleontology Commons](#), [Sedimentology Commons](#), [Soil Science Commons](#), and the [Stratigraphy Commons](#)

Reed, E.C., "Northeastern Cherry and Western Keya Paha County Preliminary Ground Water Study 1957 (GM-26): Reed, E.C. Conservation and Survey Division , size 8.5" X 11"." (1957). *Conservation and Survey Division*. 666.
<https://digitalcommons.unl.edu/conservationsurvey/666>

This Article is brought to you for free and open access by the Natural Resources, School of at DigitalCommons@University of Nebraska - Lincoln. It has been accepted for inclusion in Conservation and Survey Division by an authorized administrator of DigitalCommons@University of Nebraska - Lincoln.

WATER TABLE CONTOUR MAP — NORTHEASTERN CHERRY AND WESTERN KEWA PAHA COUNTIES

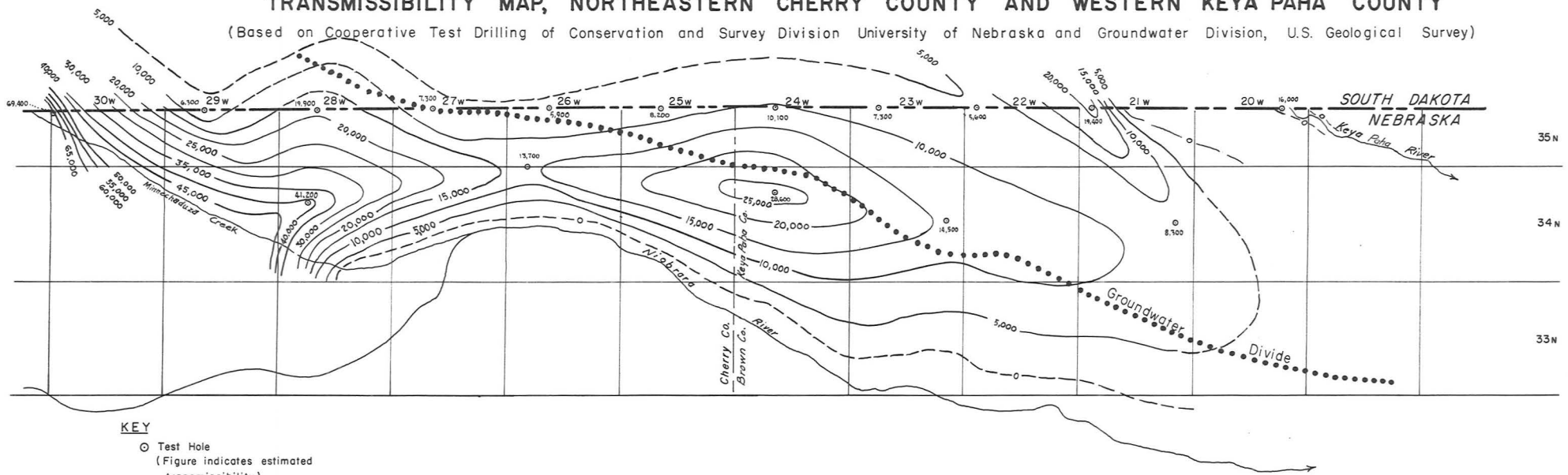
(Based on Cooperative Survey of Conservation and Survey Division University of Nebraska and Groundwater Division, U.S. Geological Survey)



Prepared by E. C. REED Aug 25, 1957
 CONSERVATION & SURVEY DIVISION
 University of Nebraska

TRANSMISSIBILITY MAP, NORTHEASTERN CHERRY COUNTY AND WESTERN KEYA PAHA COUNTY

(Based on Cooperative Test Drilling of Conservation and Survey Division University of Nebraska and Groundwater Division, U.S. Geological Survey)



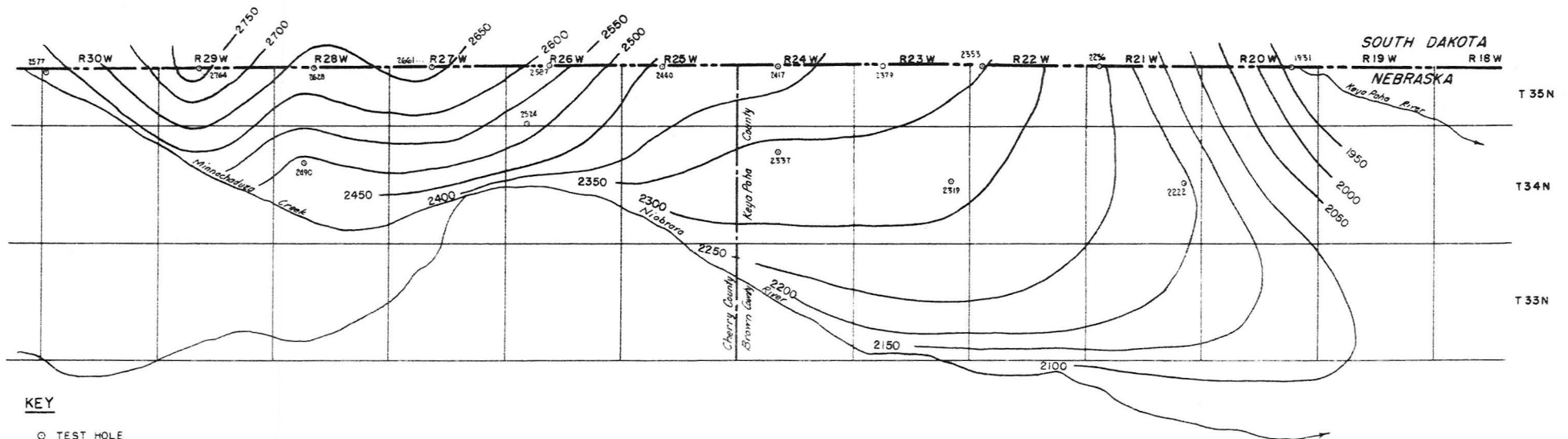
KEY

- Test Hole
(Figure indicates estimated transmissibility)
- Lines of Equal Transmissibility
(Approximate yields of large diameter wells in gallons per minute equals about 1/100 of transmissibility)
- - - Approximate Boundary of Relatively Impervious Bedrock
(Brule formation and Pierre shale)

Prepared by E.C. REED, Aug. 25, 1957
 CONSERVATION & SURVEY DIVISION
 University of Nebraska

SUBSURFACE TOPOGRAPHIC MAP SHOWING ALTITUDE OF BASE OF PERMEABLE MATERIAL NORTHEASTERN CHERRY COUNTY AND WESTERN KEYA PAHA COUNTY

(Based on Cooperative Test Drilling of Conservation and Survey Division University of Nebraska and Groundwater Division, U. S. Geological Survey)

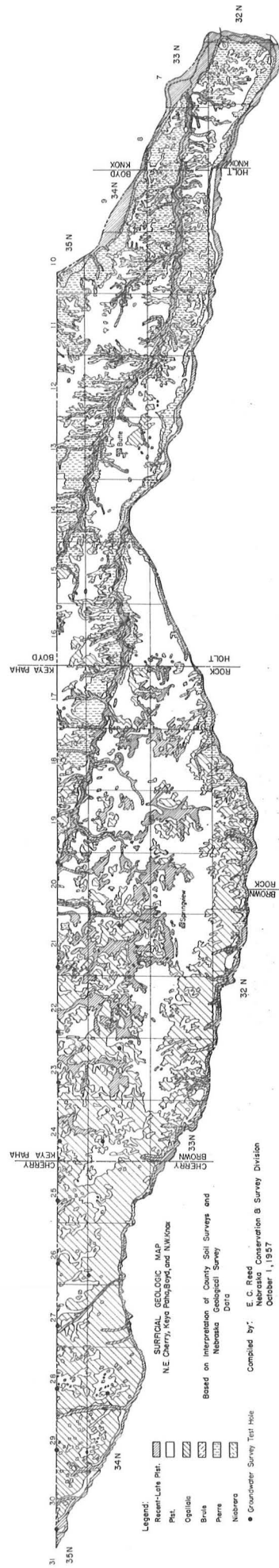


KEY

- TEST HOLE
- (Figures indicates base of permeable material, largely Ogallala Formation).

2500' SUBSURFACE TOPOGRAPHIC CONTOURS
Contour interval = 50 Feet

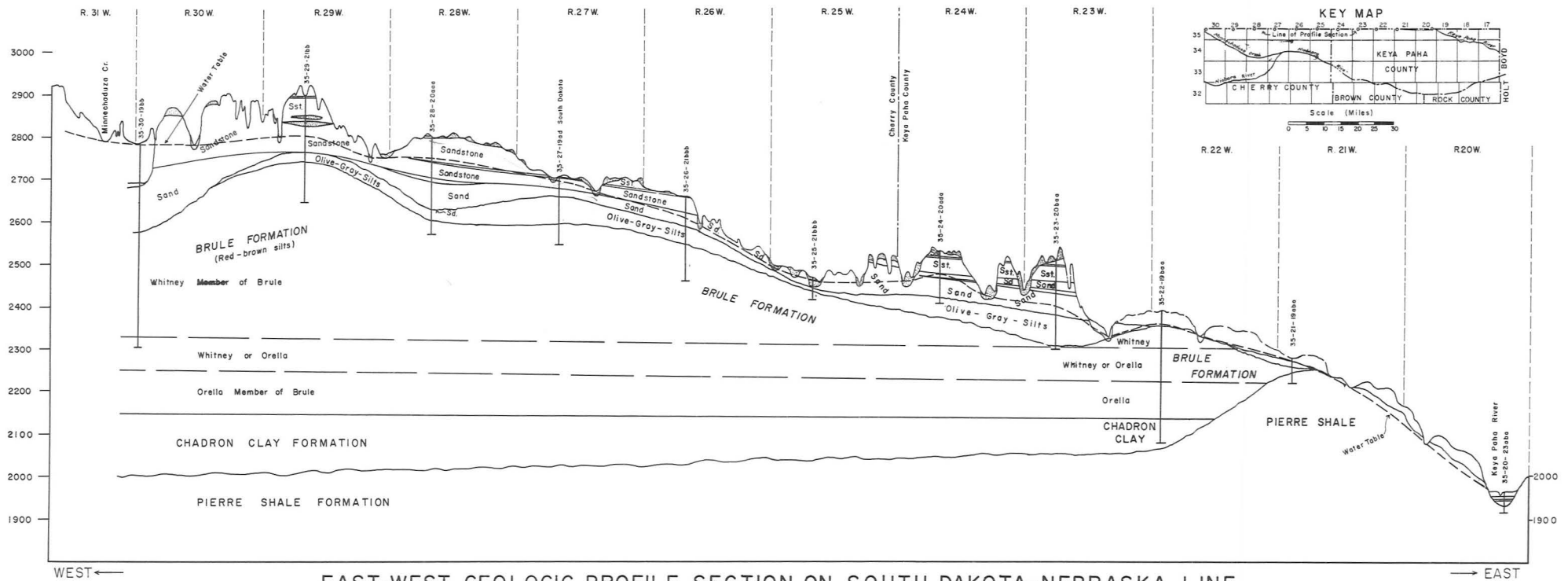
Prepared by E C REED Aug. 25, 1957
CONSERVATION & SURVEY DIVISION
University of Nebraska



Legend:
 Recent-Late Plst. [diagonal lines]
 Plst. [horizontal lines]
 Ogallala [vertical lines]
 Brule [cross-hatch]
 Pierre [stippled]
 Nebraska [wavy lines]
 • Groundwater Survey Test Hole

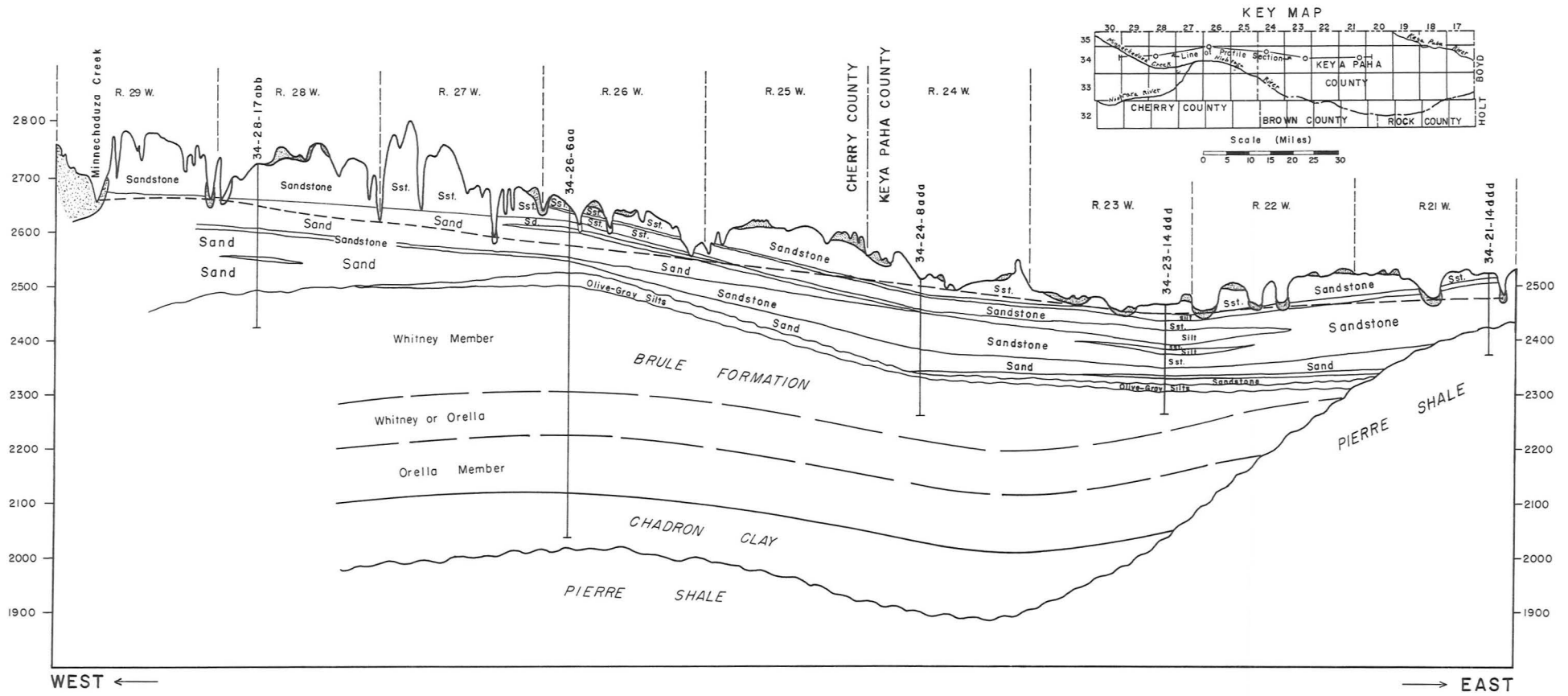
SURFICIAL GEOLOGIC MAP
 NE QUARTER, NE CORNER, LAND TOWNSHIP
 Based on Interpretations of County, Soil Surveys and
 Nebraska Geological Survey Data
 Compiled by E. C. Reed
 Nebraska Construction B Survey Division
 October 1, 1937

X Seal



EAST-WEST GEOLOGIC PROFILE SECTION ON SOUTH DAKOTA-NEBRASKA LINE
MINNECHADUZA CREEK TO KEYA PAHA RIVER

PREPARED BY E.C. REED
CONS. & SURV. DIV.
OCT. 1, 1957



EAST-WEST PROFILE SECTION THREE TO SIX MILES SOUTH OF SOUTH DAKOTA-NEBRASKA LINE

