



University of
Zurich^{UZH}

Zurich Open Repository and
Archive

University of Zurich
Main Library
Strickhofstrasse 39
CH-8057 Zurich
www.zora.uzh.ch

Year: 2019

The evolutionary history of *Leucaena*: Recent research, new genomic resources and future directions

Abair, Alexander; Hughes, Colin E; Bailey, C Donovan

Abstract: Keynote paper presented at the International *Leucaena* Conference, 13 November 2018, Brisbane, Queensland, Australia. Ancestral genome duplication, genomic diploidization, allopatric diploid speciation and recent allotetraploidy (hybrid tetraploid formation) have all contributed to the complex evolutionary history of the genus *Leucaena* Benth. (Leguminosae: Caesalpinioideae: mimosoid clade). This complexity makes *Leucaena* an exemplary group to investigate the impacts of these diverse mechanisms on plant speciation across time and space. Furthermore, this complex evolutionary history offers unique opportunities and challenges for translational applied research to improve the use of *Leucaena* in agroforestry, livestock production, soil stabilization and enrichment and biofuels. Here we review and synthesize historical and recent research on the evolutionary history of *Leucaena* and highlight the availability of new genomic data resources and tools.

DOI: [https://doi.org/10.17138/tgft\(7\)65-73](https://doi.org/10.17138/tgft(7)65-73)

Posted at the Zurich Open Repository and Archive, University of Zurich

ZORA URL: <https://doi.org/10.5167/uzh-171514>

Journal Article

Published Version



The following work is licensed under a Creative Commons: Attribution-NonCommercial 4.0 International (CC BY-NC 4.0) License.

Originally published at:

Abair, Alexander; Hughes, Colin E; Bailey, C Donovan (2019). The evolutionary history of *Leucaena*: Recent research, new genomic resources and future directions. *Tropical Grasslands*, 7(2):65-73.

DOI: [https://doi.org/10.17138/tgft\(7\)65-73](https://doi.org/10.17138/tgft(7)65-73)

ILC2018 Keynote paper*

The evolutionary history of *Leucaena*: Recent research, new genomic resources and future directions

La historia evolucionaria de Leucaena: Investigaciones recientes, recursos genómicos nuevos y futuras perspectivas

ALEXANDER ABAIR¹, COLIN E. HUGHES² AND C. DONOVAN BAILEY¹

¹Department of Biology, New Mexico State University, Las Cruces, NM, USA. bio.nmsu.edu

²Department of Systematic & Evolutionary Botany, University of Zurich, Zürich, Switzerland. systbot.uzh.ch

Abstract

Ancestral genome duplication, genomic diploidization, allopatric diploid speciation and recent allotetraploidy (hybrid tetraploid formation) have all contributed to the complex evolutionary history of the genus *Leucaena* Benth. (Leguminosae: Caesalpinioideae: mimosoid clade). This complexity makes *Leucaena* an exemplary group to investigate the impacts of these diverse mechanisms on plant speciation across time and space. Furthermore, this complex evolutionary history offers unique opportunities and challenges for translational applied research to improve the use of *Leucaena* in agroforestry, livestock production, soil stabilization and enrichment and biofuels. Here we review and synthesize historical and recent research on the evolutionary history of *Leucaena* and highlight the availability of new genomic data resources and tools.

Keywords: Hybridization, Leguminosae, phylogenetics, polyploidy, speciation, systematics.

Resumen

La duplicación del genoma ancestral, la diploidización genómica, la especiación diploide alopátrica y la alotetraploidía reciente (formación de tetraploides híbridos) han contribuido a la compleja historia evolutiva del género *Leucaena* Benth. (Leguminosae: Caesalpinioideae: clado mimosoide). Esta complejidad hace de *Leucaena* un grupo ejemplar para investigar los impactos de estos diversos mecanismos en la especiación de plantas a través del tiempo y el espacio. Además, esta compleja historia evolutiva ofrece oportunidades y desafíos únicos para la investigación translacional aplicada con el objetivo de mejorar el uso de *Leucaena* en agroforestería, producción ganadera, estabilización y enriquecimiento del suelo, y biocombustibles. En este trabajo revisamos y sintetizamos la investigación histórica y reciente sobre la historia evolutiva de *Leucaena* y destacamos la disponibilidad de nuevos recursos de datos genómicos y herramientas para procesarlos.

Palabras clave: Especiación, filogenética, hibridación, Leguminosae, polyploidía, sistemática botánica.

Introduction

The neotropical legume genus *Leucaena* comprises 24 species, with a native range spanning the southern USA to northern Peru. *Leucaena* are mostly small trees (occasionally shrubs) with bipinnately compound leaves, a lack of stem or leaf armament, extrafloral nectaries, globose to sub-

globose inflorescences of many small flowers and elongate, flattened, dehiscent pods. Numerous human uses for *Leucaena* have contributed to a long history of use in Mesoamerica for food, shade, firewood and even spiritual medicine. Archaeological evidence from seed remains in caves dates the use of *Leucaena* seeds as a minor food source by Mixtec and Nahuatl people to at least 6,000 years ago

Correspondence: Alexander Abair, Department of Biology, New Mexico State University, Las Cruces, NM 88003-8001, USA.
Email: aabair@nmsu.edu

*Keynote paper presented at the International Leucaena Conference, 1–3 November 2018, Brisbane, Queensland, Australia.

(Zárate 2000) and seeds of 13 species have been recorded to be consumed in modern times in south-central Mexico (Hughes et al. 2007), where they are referred to as ‘guaje’ [goo-ah’-hay].

Research on *Leucaena* has focused on the archaeological history of plant use, patterns of evolutionary diversification among species, impacts of human use on diversification, as well as many applied research questions associated with multipurpose use in subsistence farming, modern agriculture and range management systems. The number of distinct species within the *Leucaena* genus has been investigated through reciprocal illumination of morphological and molecular evidence that currently supports the recognition of 19 diploid and 5 allotetraploid species (Hughes 1998a; Govindarajulu et al. 2011a). Studies into the underlying patterns of divergence and reticulation among species have involved phylogenetic, geographic and crossability projects. The morphological and ecophysiological diversity within the genus combined with high crossability among species provide ample opportunities for genetic improvement via traditional breeding approaches, and notably via interspecific artificial hybridization to develop genetically improved seed lines (Brewbaker et al. 1989; Brewbaker and Sorensson 1990). Additionally, newly generated genomic data, tools and resources are helping to advance our understanding of species relationships and will be critical for underpinning future basic and applied research on this interesting and economically important genus.

Here we provide an overview of species diversity and the evolutionary history of *Leucaena*, focusing especially on studies over the last 30 years. These studies have revealed a complex history, which includes paleopolyploidy, genomic diploidization, allopatric diploid divergences, recent interspecific hybridization and allopolyploidization precipitated by anthropogenic translocation and cultivation (Hughes et al. 2007; Govindarajulu et al. 2011a, 2011b). This complex myriad of evolutionary mechanisms influencing the history of *Leucaena* presents challenges for reconstructing an accurate phylogeny. In addition to reviewing past work on *Leucaena*, we summarize on-going and recently published genomic work and the utility of these new genomic data for basic and applied research on *Leucaena*.

Taxonomy and morphology

The genus *Leucaena* was first described in 1842 when Bentham (1842) transferred *Acacia glauca*, *A. pulverulenta*, *A. diversifolia* and *A. trichodes* to this newly recognized genus. Subsequent work by Bentham (1846; 1875), Standley (1922), Britton and Rose (1928), Brewbaker (1987a), Harris et al. (1994), Zárate (1994), Hughes (1998a) and Govindarajulu et al. (2011a) has all contributed to the

modern circumscription of 24 species within the *Leucaena* genus.

The genus is placed in the informal *Leucaena* group alongside *Desmanthus*, *Kanaloa* and *Schleinitzia* within the mimosoid clade of the newly re-circumscribed legume subfamily Caesalpinioideae (LPWG 2017). Anther and pollen morphology as well as chloroplast and nrDNA ITS sequence data have been used to determine generic relationships within the *Leucaena* group (Hughes 1997; 1998b), which is part of a larger clade including the informal *Dichrostachys* group, plus the genera *Prosopidastrum*, *Piptadeniopsis* and *Mimozyanthus* (Hughes et al. 2003; Luckow et al. 2005; LPWG 2017).

All 24 species of *Leucaena* are woody, single or multi-stemmed trees or shrubs ranging from 4 to 25 m tall. The shoots are always free of spines or prickles. Terminal shoots can either be terete or ridged with corky fiber bundles. Leaves in *Leucaena* are always stipulate, alternate and bipinnate, but show significant and conspicuous quantitative variation within and between species in terms of numbers of pairs of pinnae per leaf and leaflets per pinna and leaflet size. Many species exhibit nyctinasty (circadian-based ‘sleep’ movement) in their leaflets and pinnae; however, seismonasty (touch sensitivity) does not occur in *Leucaena* (Hughes 1998a).

Extrafloral nectaries are found on various parts of the leaves of all *Leucaena* species. These nectar-secreting glands mediate mutualisms with ants for protection against herbivory, and are common across the majority of mimosoid legume genera (Marazzi et al. 2013). The morphology and arrangement of these structures help distinguish some *Leucaena* species from others (Hughes 1998a).

The stamen filaments are generally yellow, white or pink, and flowers are borne in globose or subglobose capitula (head-like clusters) that are variously arranged on flowering shoots. Pods generally arise in clusters of 1–15, but sometimes as many as 45 from a single capitulum. *Leucaena* seeds typically have circular to ovate or ellipsoid shape and are dorsi-ventrally flattened (Hughes 1998a).

Cladistic analyses of morphological data (Hughes 1998a) revealed limited support for a number of groups. For example, the *Leucaena esculenta* group shares thick and corky bark with gray-metallic surfacing, while the closely related *L. retusa* and *L. greggii* share stipitate extrafloral nectaries. Quantitative analyses of leaf traits (number of pairs of pinnae, number of pairs of leaflets and size of leaflets) show clear patterns of morphological intermediacy in hybrids, including a dosage effect due to ploidy (Sorensson 1993; Hughes and Harris 1994, 1998; Hughes 1998b), suggesting tight genetic control of quantitative leaf morphology.

Crossability among species

Through a massive series of artificial intra- and interspecific crossing experiments, Sorensson and Brewbaker (1994) investigated the potential to generate hybrids as well as the mechanisms and degree of incompatibility within and among species. At that time, just 16 species (15 published and 1 unpublished) were recognized in the genus. Of the 120 possible 2-way mating combinations, 118 were artificially hybridized and 31 of the 32 possible self- and interspecific mating combinations tested (Sorensson and Brewbaker 1994). An impressive 58,218 floret emasculations and hand-pollinations were made, with 77% of 118 two-way combinations and 61% of 232 one-way combinations producing viable seed, demonstrating high crossability among species and the tremendous scope for the use of crossing in breeding work to generate novel hybrids, which have dominated *Leucaena* improvement programs to date (Brewbaker et al. 1989; Brewbaker and Sorensson 1990). Furthermore, the predominant factor in interspecific incompatibility was variation in ploidy between parents, whereas gametophytic self-incompatibility was noted at the intraspecific diploid level. Crossability among morphologically, genetically, geographically and even chromosomally distinct diploid species is consistent with a predominant mode of allopatric, rather than sympatric, speciation (Govindarajulu et al. 2011a).

Variation in chromosome number and genome size: Paleopolyploidy, diploidization and neopolyploidy

Most diploid mimosoids have a chromosome complement of $2n = 26$ (e.g. Santos et al. 2012), suggesting a base number of $x = 13$ for mimosoids. However, the ‘diploid’ species of *Leucaena*, whose chromosome numbers have been counted, have $2n = 52$ or 56 (Pan and Brewbaker 1988; Palomino et al. 1995; Cardoso et al. 2000; Schifino-Wittmann et al. 2000), which is consistent with *Leucaena* having experienced an ancient polyploidization (paleopolyploidization), i.e. whole genome duplication, prior to the diversification of the modern ‘diploid’ lineages. Nevertheless, these species are typically referred to as ‘diploids’ because they show primarily disomic, rather than tetrasomic, patterns of inheritance (Pan 1985; Sorensson and Brewbaker 1989).

Furthermore, genome size data (Palomino et al. 1995; Hartman et al. 2000; Govindarajulu et al. 2011b) for 24 species of *Leucaena* suggest that *L. macrophylla* has the smallest genome of all legumes (data.kew.org/cvalues) and that other diploid *Leucaena* species also have relatively small genomes ranging from 0.31 to 1.65 pg/1C. Although some of the absolute sizes of these genomes are inconsistent with subsequent unpublished estimates for all 19 diploid

taxa (Trujillo and Bailey, unpublished data), both sources are consistent with typical ‘diploid’ genomes rather than full tetraploid complements that might have been retained from the paleopolyploidization event. Ultimately the combined evidence from chromosome numbers, disomic inheritance and genome sizes suggests extensive genomic diploidization following an ancestral paleopolyploidization along the stem lineage of *Leucaena* (Govindarajulu et al. 2011b; Figure 1).

By contrast, the tetraploid *Leucaena* species have $2n = 104$ or 112 chromosomes with genome sizes (Palomino et al. 1995; Hartman et al. 2000; Govindarajulu et al. 2011b) close to the sum of their parental complements (see below), consistent with little diploidization in the modern ‘tetraploid’ lineages, suggesting that either the mechanism of diploidization is not functioning to any great degree in these tetraploid lines, or these tetraploid taxa arose recently, offering insufficient time for diploidization to have significantly reduced genome sizes (Govindarajulu et al. 2011b).

Phylogenetics of *Leucaena*

Early assessments of relationships among species of *Leucaena* involved analysis of morphological, cytological and crossability evidence (Zárate 1984, 1994; Brewbaker 1987b; Pan and Brewbaker 1988; Hughes 1998b). The first molecular phylogenetic investigation of *Leucaena* (Harris et al. 1994) used cpDNA RFLP data for 22 species and showed for the first time 3 main clades of diploids. However, conflict between the cpDNA gene tree and morphology and cytology suggested that cpDNA might have been influenced by plastome capture, raising doubts about this initial cpDNA gene tree as a species tree.

A clearer understanding of species limits plus the addition of nrDNA ITS sequence data and a rescoring of the cpDNA restriction fragment length polymorphism (RFLP) data (Hughes et al. 2002) presented relationships that were in agreement with the previous cpDNA RFLP study (Harris et al. 1994) in resolving 3 main clades of diploid species. However, within these 3 clades, bootstrap support values (particularly in Clade 1) remained low. To address this problem, an approach based on random amplification of polymorphic DNA was used to develop a set of anonymous low-copy nuclear loci and these were sequenced (Bailey et al. 2004) to further estimate relationships among species (Hughes et al. 2007; Govindarajulu et al. 2011a, 2011b). Govindarajulu et al. (2011a), using 59 accessions representing all diploid taxa, recovered the 3 clades established from earlier molecular work as well as a more robust estimate of interspecific relationships. Results from this analysis also provided strong evidence for allopatric divergence as the predominant mode of speciation among the diploid species (as noted above).

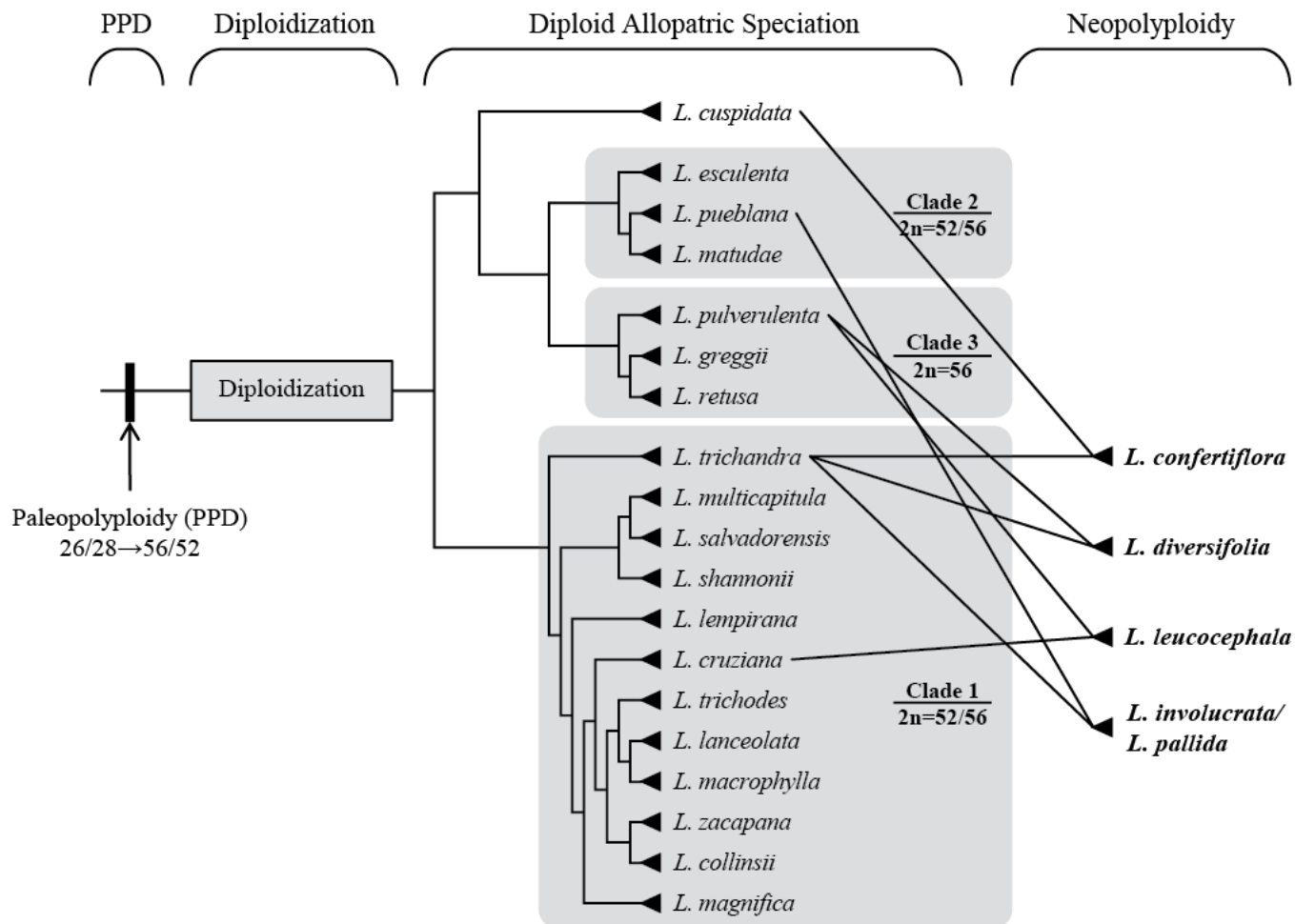


Figure 1. The evolutionary dynamics of polyploidy in *Leucaena*. The diploid phylogeny summarizes relationships recovered by Govindarajulu et al. (2011a). Multiple accessions of each species are collapsed to single terminals. Figure reprinted from Govindarajulu et al. (2011b) with permission from Wiley Company.

In these studies, multiple diploid populations were sampled using AFLPs to explore species boundaries on a scale not possible with morphological or cytological characters alone (Govindarajulu et al. 2011a). The resulting population genetic results supported the previously recognized taxonomy (Hughes 1998a), except for *L. lanceolata*, which was shown to be polyphyletic leading to the addition of *L. cruciana* as a species distinct from *L. lanceolata*, and upranking of *L. collinsii* subsp. *zacapana* as a distinct species (*L. zacapana*) (Govindarajulu et al. 2011a).

With these clarifications of species limits and the accumulated phylogenetic evidence, there is strong support for recognizing 3 major clades of diploids: Clade 1 (*L. collinsii*, *L. cruciana*, *L. lanceolata*, *L. lempirana*, *L. macrophylla*, *L. magnifica*, *L. multicapitula*, *L. salvadorensis*, *L. shannonii*, *L. trichandra*, *L. trichodes* and *L. zacapana*); Clade 2 (*L. esculenta*, *L. matudae* and

L. pueblana); and Clade 3 (*L. greggii*, *L. retusa* and *L. pulverulenta*), with little evidence of homoploid hybridization among or within these clades (Govindarajulu et al. 2011a). The position of the other diploid species *L. cuspidata* and the relationships among closely related species in Clade 1 remain poorly resolved, but forthcoming phylogenetic analyses using much larger DNA sequence data sets (plastomes and nuclear genes from transcriptomes) across species will likely resolve these last remaining phylogenetic questions. With a few minor exceptions, the 3 diploid clades occupy largely allopatric distributions: Clade 1, the most widespread, is distributed from northern South America through Central America, south-central Mexico and along the Pacific coast of Mexico as far north as Sonora in lowland seasonally dry tropical forests; Clade 2 is found in inland regions of the south-central Mexican highlands and seasonally dry valleys mainly south of the Mexican volcanic

axis; and Clade 3 has the most northerly distribution in northeast Mexico (north of the central volcanic axis) extending into southern Texas and adjacent New Mexico in the USA.

Serendipitous hybridization and polyploidy

Allopatric distributions of diploid sister species are consistent with geographical isolation and predominantly allopatric diploid speciation (Govindarajulu et al. 2011a). However, all 5 tetraploid species of *Leucaena* show clear evidence of hybrid (i.e. allopolyploid) origins, implying sympatry of their putative diploid parental species, but sympatry appears to be rare among wild diploid populations. Indeed, evidence suggests that each allotetraploid resulted from crosses between species placed in different diploid clades, which themselves have distinct geographies, further emphasizing the lack of sympatry among diploid species in the wild (Govindarajulu et al. 2011b).

Figure 2 illustrates the hypothesized origins of each allotetraploid species (Govindarajulu et al. 2011b). Here we refer to parental lines in terms of extant species; however, if the crosses were much older, the parental line would have been akin to, but not necessarily the same as, the modern species. Three of the 5 allotetraploids include *L. trichandra* as the putative paternal diploid parent crossed with *L. pulverulenta* to form tetraploid *L. diversifolia* and a species of the *L. esculenta* group to form *L. involucrata* and *L. pallida*. While *L. pallida* and *L. involucrata* may have the same polyploid origin, minor differences in morphology as well as allopatric distributions suggest these are 2 distinct species. The fourth *L. trichandra*-derived tetraploid, *L. confertiflora*, has *L. trichandra* as the putative maternal parent and *L. cuspidata* as the paternal line. Repeated involvement of *L. trichandra* in the origins of 4 of the 5 tetraploids, particularly on the paternal side, is consistent with its high propensity to produce unreduced pollen grains, its wide geographical distribution and early signs of its use

as a human food source (Govindarajulu et al. 2011b). The fifth tetraploid species, the widely translocated and pantropically cultivated and naturalized *L. leucocephala* is derived maternally and paternally from *L. pulverulenta* and *L. cruziana*, respectively.

The divergent hybrid origin of each tetraploid lineage has raised interesting questions about the likely origin(s) of these taxa. The available evidence suggests that at least some of these tetraploid species may be the product of serendipitous backyard hybridization via juxtaposition in informal cultivation in central Mexico over the last 6,000 years (Hughes et al. 2007; Govindarajulu et al. 2011b). Evidence consistent with this anthropogenic backyard allopolyploid formation hypothesis includes the aforementioned predominance of allopatry among wild diploids, limited genomic diploidization of tetraploids suggesting recency of the tetraploids (see above), and archeological evidence that suggests the oldest seeds of tetraploid *Leucaena* date from about 1,500 years ago, long after the first appearance of *Leucaena* seed remains, this despite the predominant cultivation and use of allotetraploids in backyard gardens today (Hughes et al. 2007; Govindarajulu et al. 2011b).

Several other putative spontaneous polyploid hybrids have been discovered and documented across south-central Mexico. These are also thought to have arisen following juxtaposition of their parents in cultivation. Two of these have been named as hybrid species. First, the named hybrid taxon, *L. ×mixtec*, a putative triploid between tetraploid *L. leucocephala* and diploid *L. esculenta*, is a relatively common tree across south-central Mexico (Hughes and Harris 1998). As expected for a triploid, these *L. ×mixtec* hybrids are sterile and each individual thus likely represents a de novo F1 spontaneous hybrid. A second named hybrid taxon, *L. ×spontanea*, a putative hybrid between tetraploid *L. leucocephala* and *L. diversifolia*, occurs as scattered individuals wherever these 2 species occur together (Hughes and Harris 1998). Finally, a few individuals of a putative hybrid between *L. leucocephala* and *L. confertiflora* have

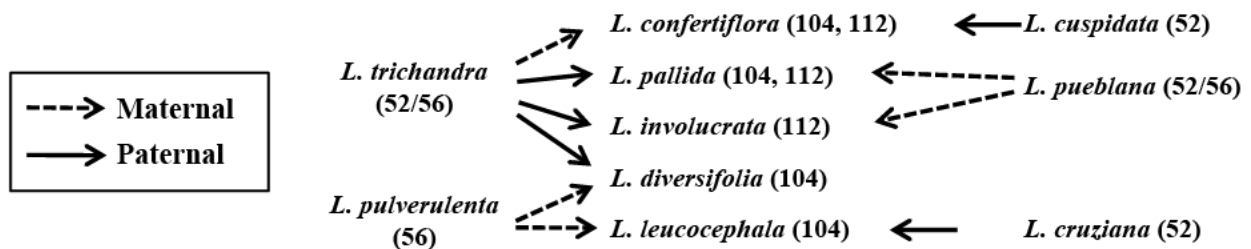


Figure 2. Inferred pattern of tetraploid origins from diploid progenitors. Maternal origins are based on findings from cpDNA and congruent resolution in nuclear-derived gene trees. Paternal origins derive from the divergent placement of nuclear-derived sequences in comparison with the inferred maternal origins. Figures reprinted from Govindarajulu et al. (2011b) with permission from Wiley Company.

been documented, also in south-central Mexico (Hughes et al. 2007). The full extent of spontaneous interspecific hybridization in south-central Mexico remains to be fully investigated.

As a wider range of *Leucaena* species are cultivated on an ever wider scale, continued spontaneous hybridization and generation of new hybrids are likely, adding further complexity to an already complex picture of polyploidy and interspecific hybridization.

Developing genomic resources

Future applied and basic research on *Leucaena* will benefit greatly from recent and ongoing research to sequence a *Leucaena* genome and generate transcriptome data for all species. Diploid *L. trichandra* was selected as the species for genome sequencing because it is the putative progenitor of 4 of the 5 tetraploid species. Table 1 summarizes available

Leucaena-associated NCBI Sequence Read Archive (SRA) resources, including genomic DNA reads representing organellar and nuclear genomes, as well as a variety of transcriptomic data (RNA-seq) from multiple species. Below we briefly review some of the pertinent findings from these studies and outline ongoing work.

The chloroplast genomes for *Leucaena trichandra* and other mimosoids were sequenced by Schwarz et al. (2015) and Dugas et al. (2015), resulting in resources relevant to the understanding of variation in coding and non-coding chloroplast sequence, cpDNA genome structure and RNA editing. Similarly, Kovar et al. (2018) recently published a mitochondrial genome (*L. trichandra*) with discussion on the origin of mtDNA DNA variation and mitochondrial RNA-editing across the genus. In these studies, the mimosoid organellar genome(s) is considerably larger than their papilionoid legume counterparts. The authors discuss some of the sources and mechanisms behind this

Table 1. NCBI Sequence Read Archive materials available for public use.

SRA Accession	Species	Library Source	Data type
SRX2719625	<i>L. trichandra</i>	Genomic DNA	PacBio raw reads from the mitochondrial genome assembly - gDNA
SRX2719624	<i>L. trichandra</i>	Genomic DNA	4kb insert mate pair library - set 1
SRX2719623	<i>L. trichandra</i>	Genomic DNA	4kb insert mate pair library - set 2
SRX1341614	<i>L. trichandra</i>	Genomic DNA	300bp Illumina PE library data
ERX386816	<i>L. leucocephala</i>	Genomic DNA	PE Illumina data for microsatellite development
ERX386817	<i>L. leucocephala</i>	Genomic DNA	PE Illumina data for microsatellite development
SRS2110148	<i>L. pueblana</i>	Genomic DNA	100bp Illumina PE library data
SRX625626	<i>L. leucocephala</i>	Genomic DNA methyl CpG depleted	Illumina PE library
SRX625625	<i>L. leucocephala</i>	Genomic DNA methyl CpG depleted	Illumina PE library
SRX625623	<i>L. leucocephala</i>	Methyl CpG study untreated control	Illumina PE library
SRX886540	<i>L. leucocephala</i>	Metagenomic soil sample	
SRX2719621-SRX2719622	<i>L. cuspidata</i>	Transcriptomic	RNA-seq library data - rRNA depleted libraries 1 & 2
SRX2719619- SRX2719620	<i>L. cruziana</i>	Transcriptomic	RNA-seq library data - rRNA depleted libraries 1 & 2
SRX2719617-SRX2719618	<i>L. pulverulenta</i>	Transcriptomic	RNA-seq library data - rRNA depleted libraries 1 & 2
SRX2719615-SRX2719616	<i>L. trichandra</i>	Transcriptomic	RNA-seq library data - rRNA depleted libraries 1 & 2
SRX2719613-SRX2719614	<i>L. leucocephala</i>	Transcriptomic	RNA-seq library data - rRNA depleted libraries 1 & 2
SRX2719611-SRX2719612	<i>L. esculenta</i>	Transcriptomic	RNA-seq library data - rRNA depleted libraries 1 & 2
SRX1282083-SRX1282084	<i>L. leucocephala</i> K636	Transcriptomic	RNA-seq library data - rRNA depleted library
SRR2517688	<i>L. leucocephala</i>	Transcriptomic	RNA-seq library of shoots
SRR2517689	<i>L. leucocephala</i>	Transcriptomic	RNA-seq library of roots

size variation. The associated RNA-seq and gDNA-seq genomes are essential prerequisites for the development of organellar-derived species-specific markers and for gene expression studies at the organellar level.

In addition to organellar genomic resources, the Bailey Lab at New Mexico State University is currently completing a draft nuclear genome, based on PacBio and Illumina sequence data for the diploid *L. trichandra* (Bailey et al. unpublished data – available, with stipulations on publication priority/conflicts from the authors on request). Current analysis and annotations on the genome suggest that *L. trichandra*, and presumably other ‘diploid’ *Leucaena*, retain considerable evidence of the paleotetraploidization event that predates the divergence of ‘diploid’ *Leucaena* (Figure 1).

In addition to these resources, the Bailey Lab (NMSU) and the Borthakur Lab (UNH Manoa) are continuing to work on a number of resources, including an investigation of plant transcript response to psyllid feeding in *L. cruziana* (Lakshman et al. in prep.) and the Bailey Lab has transcriptomic and raw genomic data available from *Leucaena* psyllids. Like some of their relatives (www.ncbi.nlm.nih.gov/genome/genomes/867?genome_assembly_id=31561), these psyllid genomes display considerable bias in GC content that complicates the use of Illumina data to assemble a full genome.

Future directions

These new genomic data are providing new insights into the phylogenetic relationships among diploid species (Abair et al. in preparation) plus the origins of the allo-tetraploids, as well as tools and resources for germplasm improvement. While the basic phylogenetic framework and likely polyploid parentages are now fairly well established, the details of these polyploid origins in terms of where, when and how many times they happened remain poorly understood. The emerging genomic data resources provide access to unlimited genetic markers that could be used to test for multiple independent origins for each of the 5 *Leucaena* tetraploids, and most notably the globally important *L. leucocephala* and its morphologically variable taxonomic subspecies. A key element in future work is likely to involve much denser sampling of accessions of tetraploids and their diploid parents to fully reveal the complexities of this extensive hybrid and polyploidy series.

These new genomic tools and resources, alongside a better understanding of the evolutionary history of *Leucaena*, also present exciting new opportunities for *Leucaena* genetic improvement and breeding programs, including efforts to develop seed or sterile lines with low

potential for invasiveness, decreased mimosine concentration and traits that improve their utility in difficult environments (salinity, cold, drought, etc.).

Acknowledgments

Major elements of this research were supported by the US National Science Foundation through NSF 12387321 to CDB. The authors thank Dr. Max Shelton for inviting us to contribute this paper in this compendium and Dr. Chris Lambrides for helpful comments on the manuscript.

References

(Note of the editors: All hyperlinks were verified 24 April 2019.)

- Bailey CD; Hughes CE; Harris SA. 2004. Using RAPDs to identify DNA sequence loci for species level phylogeny reconstruction: An example from *Leucaena* (Fabaceae). *Systematic Botany* 29:4–14. doi: [10.1600/036364404772973483](https://doi.org/10.1600/036364404772973483)
- Bentham G. 1842. Notes on *Mimoseae*, with a short synopsis of species. *Hooker's London Journal of Botany* 4:416–417. biodiversitylibrary.org/page/2912204
- Bentham G. 1846. Notes on the *Mimoseae* with a synopsis of species. *Hooker's London Journal of Botany* 5:94–95. biodiversitylibrary.org/page/775463
- Bentham G. 1875. VII. Revision of the suborder *Mimoseae*. *Transactions of the Linnean Society of London* 30:335–664. biodiversitylibrary.org/page/27558194
- Brewbaker JL. 1987a. Species in the genus *Leucaena*. *Leucaena Research Reports* 7:6–20.
- Brewbaker JL. 1987b. *Leucaena*: A multipurpose tree genus for tropical agroforestry. In: Steppler HA; Nair PK, eds. *Agroforestry: A decade of development*. ICRAF, Nairobi, Kenya. p. 289–323. bit.ly/2UsW0wd
- Brewbaker J; Sorensson C; Wheeler R. 1989. New tree crops from interspecific *Leucaena* hybrids. In: Napompeth B; MacDicken KG, eds. *Leucaena psyllid: Problems and management*. Proceedings of an international workshop, Bogor, Indonesia, January 16–21, 1989. p. 105–110.
- Brewbaker JL; Sorensson CT. 1990. New tree crops from interspecific *Leucaena* hybrids. In: Janick J; Simon JE, eds. *Advances in new crops*. Timber Press, Portland, OR, USA. p. 283–289. bit.ly/2vgCa99
- Britton NL; Rose JN. 1928. *Mimosaceae*. *North American Flora* 23:121–131. biodiversitylibrary.org/page/28528375
- Cardoso MB; Schifino-Wittmann MT; Bodanese-Zanettini MH. 2000. Taxonomic and evolutionary implications of intraspecific variability in chromosome numbers of species of *Leucaena* Benth. (Leguminosae). *Botanical Journal of the Linnean Society* 134:549–556. doi: [10.1111/j.1095-8339.2000.tb00550.x](https://doi.org/10.1111/j.1095-8339.2000.tb00550.x)
- Dugas DV; Hernandez D; Koenen EJM; Schwarz E; Straub S; Hughes CE; Jansen RK; Nageswara-Rao M; Staats M; Trujillo JT; Hajrah NH; Alharbi NS; Al-Malki AL; Sabir JSM; Bailey CD. 2015. Mimosoid legume plastome evolution: IR expansion, tandem repeat expansions, and accelerated rate of evolution in *clpP*. *Scientific Reports* 5:16958. doi: [10.1038/srep16958](https://doi.org/10.1038/srep16958)

- Govindarajulu R; Hughes CE; Bailey CD. 2011a. Phylogenetic and population genetic analyses of diploid *Leucaena* (Leguminosae; Mimosoideae) reveal cryptic species diversity and patterns of divergent allopatric speciation. *American Journal of Botany* 98:2049–2063. doi: [10.3732/ajb.1100259](https://doi.org/10.3732/ajb.1100259)
- Govindarajulu R; Hughes CE; Alexander PJ; Bailey CD. 2011b. The complex evolutionary dynamics of ancient and recent polyploidy in *Leucaena* (Leguminosae; Mimosoideae). *American Journal of Botany* 98:2064–2076. doi: [10.3732/ajb.1100260](https://doi.org/10.3732/ajb.1100260)
- Harris SA; Hughes CE; Ingram R; Abbott RJ. 1994. A phylogenetic analysis of *Leucaena* (Leguminosae, Mimosoideae). *Plant Systematics and Evolution* 191:1–26. doi: [10.1007/BF00985339](https://doi.org/10.1007/BF00985339)
- Hartman TPV; Jones J; Blackhall NW; Power JB; Cocking EC; Davey MR. 2000. Cytogenetics, molecular cytogenetics, and genome size in *Leucaena* (Leguminosae, Mimosoideae). In: Guttenberger H; Borzan Ž; Schlarbaum SE; Hartman TPV, eds. Cytogenetic studies of forest trees and shrubs – review, present status, and outlook for the future. IUFRO Cytogenetics Working Party Symposium, 6–12 September 1998, Graz, Austria. Arbora Publishers, Zvolen, Slovakia. p. 57–70.
- Hughes CE. 1997. Variation in anther and pollen morphology in *Leucaena* Benth. (Leguminosae-Mimosoideae). *Botanical Journal of the Linnean Society* 123:177–196. doi: [10.1111/j.1095-8339.1997.tb01412.x](https://doi.org/10.1111/j.1095-8339.1997.tb01412.x)
- Hughes CE. 1998a. Monograph of *Leucaena* (Leguminosae-Mimosoideae). *Systematic Botany Monographs* 55:1–244. doi: [10.2307/25027876](https://doi.org/10.2307/25027876)
- Hughes CE. 1998b. *Leucaena*: A genetic resources handbook. Tropical Forestry Paper No. 37. Oxford Forestry Institute, Oxford, UK. bit.ly/2Iw31af
- Hughes CE; Harris SA. 1994. The characterisation and identification of a naturally occurring hybrid in the genus *Leucaena* (Leguminosae: Mimosoideae). *Plant Systematics and Evolution* 192:177–197. doi: [10.1007/BF00986251](https://doi.org/10.1007/BF00986251)
- Hughes CE; Harris SA. 1998. A second spontaneous hybrid in the genus *Leucaena* (Leguminosae, Mimosoideae). *Plant Systematics and Evolution* 212:53–77. doi: [10.1007/BF00985221](https://doi.org/10.1007/BF00985221)
- Hughes CE; Bailey CD; Harris SA. 2002. Divergent and reticulate species relationships in *Leucaena* (Fabaceae) inferred from multiple data sources: Insights into polyploid origins and nrDNA polymorphism. *American Journal of Botany* 89:1057–1073. doi: [10.3732/ajb.89.7.1057](https://doi.org/10.3732/ajb.89.7.1057)
- Hughes CE; Bailey CD; Krosnick S; Luckow M. 2003. Relationships among genera of the informal *Dichrostachys* and *Leucaena* groups (Mimosoideae) inferred from nuclear ribosomal ITS sequences. In: Klitgaard B; Bruneau A, eds. *Advances in legume systematics, Part 10, Higher level systematics*, Vol. 10. Royal Botanic Gardens, Kew, London, UK. bit.ly/2ZtCj7f
- Hughes CE; Govindarajulu R; Robertson A; Filer DL; Harris SA; Bailey CD. 2007. Serendipitous backyard hybridization and the origin of crops. *Proceedings of the National Academy of Sciences* 104:14389–14394. doi: [10.1073/pnas.0702193104](https://doi.org/10.1073/pnas.0702193104)
- Kovar L; Nageswara-Rao M; Ortega-Rodriguez S; Dugas DV; Straub S; Cronn R; Strickler SR; Hughes CE; Hanley KA; Rodriguez DN; Langhorst BW; Dimalanta ET; Bailey CD. 2018. PacBio-based mitochondrial genome assembly of *Leucaena trichandra* (Leguminosae) and an intrageneric assessment of mitochondrial RNA editing. *Genome Biology and Evolution* 10:2501–2517. doi: [10.1093/gbe/evy179](https://doi.org/10.1093/gbe/evy179)
- LPWG (The Legume Phylogeny Working Group). 2017. A new subfamily classification of the Leguminosae based on a taxonomically comprehensive phylogeny. *Taxon* 66:44–77. doi: [10.12705/661.3](https://doi.org/10.12705/661.3)
- Luckow M; Fortunato RH; Sede S; Livshultz T. 2005. The phylogenetic affinities of two mysterious monotypic mimosoids from southern South America. *Systematic Botany* 30:585–602. doi: [10.1600/0363644054782206](https://doi.org/10.1600/0363644054782206)
- Marazzi B; Bronstein JL; Koptur S. 2013. The diversity, ecology and evolution of extrafloral nectaries: Current perspectives and future challenges. *Annals of Botany* 111:1243–1250. doi: [10.1093/aob/mct109](https://doi.org/10.1093/aob/mct109)
- Palomino G; Romo V; Zárate S. 1995. Chromosome numbers and DNA content in some taxa of *Leucaena* (Fabaceae Mimosoideae). *Cytologia* 60:31–37. doi: [10.1508/cytologia.60.31](https://doi.org/10.1508/cytologia.60.31)
- Pan FJ. 1985. Systematics and genetics of the *Leucaena diversifolia* (Schlecht.) Benth. complex. Ph.D. Thesis. University of Hawaii, Honolulu, HI, USA. hdl.handle.net/10125/56391
- Pan FJ; Brewbaker JL. 1988. Cytological studies in the genus *Leucaena* Benth. *Cytologia* 53:393–399. doi: [10.1508/cytologia.53.393](https://doi.org/10.1508/cytologia.53.393)
- Santos ECXR; Carvalho R; Almeida EM; Felix LP. 2012. Chromosome number variation and evolution in Neotropical Leguminosae (Mimosoideae) from north-eastern Brazil. *Genetics and Molecular Research* 11:2451–2475. doi: [10.4238/2012.June.27.1](https://doi.org/10.4238/2012.June.27.1)
- Schifino-Wittmann MT; Cardoso MB; Boff T; Simioni T. 2000. Chromosome numbers and unreduced gametes in species of *Leucaena* Benth. (Leguminosae) – New contributions for the taxonomy, evolutionary studies and genetic breeding of the genus. In: Guttenberger H; Borzan Ž; Schlarbaum SE; Hartman TPV, eds. Cytogenetic studies of forest trees and shrubs – review, present status, and outlook for the future. IUFRO Cytogenetics Working Party Symposium, 6–12 September 1998, Graz, Austria. Arbora Publishers, Zvolen, Slovakia. p. 181–190.
- Schwarz EN; Ruhlman TA; Sabir JSM; Hajrah NH; Alharbi NS; Al-Malki AL; Bailey CD; Jansen RK. 2015. Plastid genome sequences of legumes reveal parallel inversions and multiple losses of *rps16* in papilionoids. *Journal of Systematics and Evolution* 53:458–468. doi: [10.1111/jse.12179](https://doi.org/10.1111/jse.12179)
- Sorenson CT; Brewbaker JL. 1989. *Luteus* (l), a recessive lethal mutant of *Leucaena lanceolata*. *Leucaena Research Reports* 10:79.

- Sorensson CT. 1993. Production and characterization of interspecific hybrids of the tropical tree *Leucaena* (Leguminosae: Mimosoideae). Ph.D. Thesis. University of Hawaii, Honolulu, HI, USA. hdl.handle.net/10125/9263
- Sorensson CT; Brewbaker JL. 1994. Interspecific compatibility among 15 *Leucaena* species (Leguminosae: Mimosoideae) via artificial hybridizations. *American Journal of Botany* 81:240–247. doi: [10.1002/j.1537-2197.1994.tb15435.x](https://doi.org/10.1002/j.1537-2197.1994.tb15435.x)
- Standley PC. 1922. *Leucaena*, trees and shrubs of Mexico. *Contributions to the U.S. National Herbarium* 23:366–369.
- biodiversitylibrary.org/page/15548549
- Zárate S. 1984. Taxonomic revision of the genus *Leucaena* Benth. from Mexico. *Bulletin of the International Group for the study of Mimosoideae* 12:24–34.
- Zárate S. 1994. Revisión del género *Leucaena* Benth. en México. *Anales del Instituto de Biología de la Universidad Nacional Autónoma de México, Serie Botánica* 65:83–162. bit.ly/2W62O0o
- Zárate S. 2000. The archaeological remains of *Leucaena* (Fabaceae) revised. *Economic Botany* 54:477–499.

(Accepted 31 March 2019 by the ILC2018 Editorial Panel and the Journal editors; published 31 May 2019)

© 2019



Tropical Grasslands-Forrajés Tropicales is an open-access journal published by *International Center for Tropical Agriculture (CIAT)*. This work is licensed under the Creative Commons Attribution 4.0 International (CC BY 4.0) license. To view a copy of this license, visit <https://creativecommons.org/licenses/by/4.0/>.