

LSE Research Online

J. S. Malik Peiris, Maria D. Van Kerkhove, Katelijn A. H. Vandemaele, Vivek Shinde, Giovanna Jaramillo-Gutierrez, [Artemis Koukounari](#), Christl A. Donnelly, Luis O. Carlino, Rhonda Owen, Beverly Paterson, Louise Pelletier, Julie Vachon, Claudia Gonzalez, Yu Hongjie, Feng Zijian, Shuk Kwan Chuang, Albert Au, Silke Buda, Gerard Krause, Walter Haas, Isabelle Bonmarin, Kiyosu Taniguichi, Kensuke Nakajima, Tokauki Shobayashi, Yoshihiro Takayama, Tomi Sunagawa, Jean Michael Heraud, Arnaud Orelle, Ethel Palacios, Marianne A. B. van der Sande, C. C. H. Lieke Wielders, C. C. H. Darren Hunt, Jeffrey Cutter, Vernon J. Lee, Juno Thomas, Patricia Santa-Olalla, maria J. Sierra-Moros, Wanna Hanshaoworakul, Kumnuan Ungchusak, Richard Pebody, Seema Jain, Seema and Anthony W. Mounts

Risk factors for severe outcomes following 2009 influenza A (H1N1) infection: a global pooled analysis

**Article (Accepted version)
(Refereed)**

Original citation:

Peiris, J. S. Malik and Van Kerkhove, Maria D. and Vandemaële, Katelijn A. H. and Shinde, Vivek and Jaramillo-Gutierrez, Giovanna and Koukounari, Artemis and Donnelly, Christl A. and Carlino, Luis O. and Owen, Rhonda and Paterson, Beverly and Pelletier, Louise and Vachon, Julie and Gonzalez, Claudia and Hongjie, Yu and Zijian, Feng and Chuang, Shuk Kwan and Au, Albert and Buda, Silke and Krause, Gerard and Haas, Walter and Bonmarin, Isabelle and Taniguichi, Kiyosu and Nakajima, Kensuke and Shobayashi, Tokuaki and Takayama, Yoshihiro and Sunagawa, Tomi and Heraud, Jean Michel and Orelle, Arnaud and Palacios, Ethel and van der Sande, Marianne A. B. and Wielders, C. C. H. Lieke and Hunt, Darren and Cutter, Jeffrey and Lee, Vernon J. and Thomas, Juno and Santa-Olalla, Patricia and Sierra-Moros, Maria J. and Hanshaworakul, Wanna and Ungchusak, Kumnuan and Pebody, Richard and Jain, Seema and Mounts, Anthony W. (2011) *Risk factors for severe outcomes following 2009 influenza A (H1N1) infection: a global pooled analysis. PLoS medicine*, 8 (7). ISSN 1549-1277

DOI: [10.1371/journal.pmed.1001053](https://doi.org/10.1371/journal.pmed.1001053)

This is an open-access article, free of all copyright, and may be freely reproduced, distributed, transmitted, modified, built upon, or otherwise used by anyone for any lawful purpose. The work is made available under the Creative Commons CC0 public domain dedication. [Public Library of Science](https://creativecommons.org/licenses/by/4.0/)

This version available at: <http://eprints.lse.ac.uk/37706/>

Available in LSE Research Online: August 2011

LSE has developed LSE Research Online so that users may access research output of the School. Copyright © and Moral Rights for the papers on this site are retained by the individual authors and/or other copyright owners. Users may download and/or print one copy of any article(s) in LSE Research Online to facilitate their private study or for non-commercial research. You may not engage in further distribution of the material or use it for any profit-making activities or any commercial gain. You may freely distribute the URL (<http://eprints.lse.ac.uk>) of the LSE Research Online website.

This document is the author's final manuscript accepted version of the journal article, incorporating any revisions agreed during the peer review process. Some differences between this version and the published version may remain. You are advised to consult the publisher's version if you wish to cite from it.

Risk Factors for Severe Outcomes following 2009 Influenza A (H1N1) Infection: A Global Pooled Analysis

Maria D. Van Kerkhove^{1,2}, Katelijn A. H. Vandemaële¹, Vivek Shinde¹, Giovanna Jaramillo-Gutierrez¹, Artemis Koukounari², Christl A. Donnelly², Luis O. Carlino³, Rhonda Owen⁴, Beverly Paterson⁴, Louise Pelletier⁵, Julie Vachon⁵, Claudia Gonzalez⁶, Yu Hongjie⁷, Feng Zijian⁷, Shuk Kwan Chuang⁸, Albert Au⁸, Silke Buda⁹, Gerard Krause⁹, Walter Haas⁹, Isabelle Bonmarin¹⁰, Kiyosu Taniguichi¹¹, Kensuke Nakajima¹², Tokuaki Shobayashi¹², Yoshihiro Takayama¹², Tomi Sunagawa¹¹, Jean Michel Heraud¹³, Arnaud Orelle¹³, Ethel Palacios¹⁴, Marianne A. B. van der Sande¹⁵, C. C. H. Lieke Wielders¹⁵, Darren Hunt¹⁶, Jeffrey Cutter¹⁷, Vernon J. Lee^{18,19}, Juno Thomas²⁰, Patricia Santa-Olalla²¹, Maria J. Sierra-Moros²¹, Wanna Hanshaworakul²², Kumnuan Ungchusak²², Richard Pebody²³, Seema Jain²⁴, Anthony W. Mounts^{1*}, on behalf of the WHO Working Group for Risk Factors for Severe H1N1pdm Infection

1 Global Influenza Programme, World Health Organization, **2** Medical Research Council Centre for Outbreak Analysis and Modelling, Department of Infectious Disease Epidemiology, Imperial College London, London, United Kingdom, **3** Ministerio de Salud de la Nación, Buenos Aires, Argentina, **4** Influenza Surveillance Section, Surveillance Branch, Office of Health Protection, Department of Health and Ageing, Woden, Australia, **5** Influenza Surveillance Section, Public Health Agency of Canada, Ontario, Canada, **6** Departamento de Epidemiología, División de Planificación Sanitaria, Ministerio de Salud de Chile, Santiago, Chile, **7** Office for Disease Control and Emergency Response, Chinese Center for Disease Control and Prevention Beijing, China, **8** Surveillance and Epidemiology Branch, Centre for Health Protection, Centre for Health Protection of Department of Health, Hong Kong, **9** Department for Infectious Disease Epidemiology, Robert Koch Institute, Berlin, Germany, **10** Département des Maladies Infectieuses, Institut de Veille, Sanitaire, Saint-Maurice Cedex, France, **11** Infectious Disease Surveillance Center, National Institute of Infectious Diseases, Tokyo, Japan, **12** Ministry of Health, Labour and Welfare, Tokyo, Japan, **13** Virology Unit, Institut Pasteur from Madagascar, Antananarivo, Madagascar, **14** Directorate General of Epidemiology, Mexico City, Mexico, **15** Epidemiology and Surveillance Unit, Centre for Infectious Disease Control, National Institute for Public Health and the Environment, Bilthoven, the Netherlands, **16** New Zealand Ministry of Health, Wellington, New Zealand, **17** Communicable Diseases Division at the Ministry of Health, Singapore, **18** Biodefence Centre, Ministry of Defence, Singapore, **19** Department of Epidemiology and Public Health, Yong Loo Lin School of Medicine, National University of Singapore, Singapore, **20** Epidemiology and Surveillance Unit, Respiratory Virus Unit, National Institute for Communicable Diseases, National Health Laboratory Service, Johannesburg, South Africa, **21** Coordinating Centre for Health Alerts and Emergencies, Dirección General de Salud Pública y Sanidad Exterior Ministerio de Sanidad y Política Social, Madrid, Spain, **22** Department of Disease Control, Ministry of Public Health, Nonthaburi, Thailand, **23** Health Protection Agency, London, United Kingdom, **24** Epidemiology and Prevention Branch, Influenza Division, Centers for Disease Control and Prevention, Atlanta, Georgia, United States of America

Abstract

Background: Since the start of the 2009 influenza A pandemic (H1N1pdm), the World Health Organization and its member states have gathered information to characterize the clinical severity of H1N1pdm infection and to assist policy makers to determine risk groups for targeted control measures.

Methods and Findings: Data were collected on approximately 70,000 laboratory-confirmed hospitalized H1N1pdm patients, 9,700 patients admitted to intensive care units (ICUs), and 2,500 deaths reported between 1 April 2009 and 1 January 2010 from 19 countries or administrative regions—Argentina, Australia, Canada, Chile, China, France, Germany, Hong Kong SAR, Japan, Madagascar, Mexico, the Netherlands, New Zealand, Singapore, South Africa, Spain, Thailand, the United States, and the United Kingdom—to characterize and compare the distribution of risk factors among H1N1pdm patients at three levels of severity: hospitalizations, ICU admissions, and deaths. The median age of patients increased with severity of disease. The highest per capita risk of hospitalization was among patients <5 y and 5–14 y (relative risk [RR] = 3.3 and 3.2, respectively, compared to the general population), whereas the highest risk of death per capita was in the age groups 50–64 y and ≥65 y (RR = 1.5 and 1.6, respectively, compared to the general population). Similarly, the ratio of H1N1pdm deaths to hospitalizations increased with age and was the highest in the ≥65-y-old age group, indicating that while infection rates have been observed to be very low in the oldest age group, risk of death in those over the age of 64 y who became infected was higher than in younger groups. The proportion of H1N1pdm patients with one or more reported chronic conditions increased with severity (median = 31.1%, 52.3%, and 61.8% of hospitalized, ICU-admitted, and fatal H1N1pdm cases, respectively). With the exception of the risk factors asthma, pregnancy, and obesity, the proportion of patients with each risk factor increased with severity level. For all levels of severity, pregnant women in their third trimester consistently accounted for the majority of the total of pregnant women. Our findings suggest that morbid obesity might be a risk factor for ICU admission and fatal outcome (RR = 36.3).

Conclusions: Our results demonstrate that risk factors for severe H1N1pdm infection are similar to those for seasonal influenza, with some notable differences, such as younger age groups and obesity, and reinforce the need to identify and protect groups at highest risk of severe outcomes.

Please see later in the article for the Editors' Summary.

Citation: Van Kerkhove MD, Vandemaële KAH, Shinde V, Jaramillo-Gutierrez G, Koukounari A, et al. (2011) Risk Factors for Severe Outcomes following 2009 Influenza A (H1N1) Infection: A Global Pooled Analysis. *PLoS Med* 8(7): e1001053. doi:10.1371/journal.pmed.1001053

Academic Editor: J. S. Malik Peiris, The University of Hong Kong, Hong Kong

Received October 27, 2010; **Accepted** May 18, 2011; **Published** July 5, 2011

This is an open-access article, free of all copyright, and may be freely reproduced, distributed, transmitted, modified, built upon, or otherwise used by anyone for any lawful purpose. The work is made available under the Creative Commons CC0 public domain dedication.

Funding: MDVK, CAD, and AK acknowledge funding from the Medical Research Council UK and the Bill and Melinda Gates Foundation (MDVK) for funding. No funding bodies had any role in study design, data collection and analysis, decision to publish, or preparation of the manuscript.

Competing Interests: CG worked for the Ministry of Health of Chile from 1997 to August 2010, in the Department of Epidemiology. CG has been involved in the process of preparing and developing the National Pandemic Plan since 2002. During the pandemic CG was in charge of the coordination of the Executive Committee for outbreaks and health emergencies in Chile. This committee was responsible for making decisions and implementing measures for prevention and control. Also, until August 2010, CG participated in the implementation of IHR 2005 in Chile. During the pandemic, the Pan American Health Organization (PAHO) provided funds to the Ministry of Health and the Institute of Public Health for studies and improvement of epidemiological surveillance. CG was not responsible for managing these resources. PAHO also delivered primers and other supplies for the laboratory diagnosis of influenza (RT-PCR). They provided computers for influenza sentinel centers for improving the opportunity of reporting, which also included the development of a web application for online notification. CG was a member of the Review Committee on the Functioning of the International Health Regulations (2005) and on Pandemic Influenza A (H1N1), 2009, between April 2010 and April 2011. The result of the work of this committee was submitted to the World Health Assembly in May 2011. In December 2010 (29 November to 15 December) CG was part of a mission to assess the health sector response to pandemic influenza A (H1N1) in Mexico. This mission was requested by the Ministry of Health of Mexico to PAHO. Other mission members were Dr. Jarbas Barbosa (Brazil), Dr. Hande Harmanci (WHO), Dr. Juan Pablo Sarmiento (Colombia), Dr. Ronald St. John (Canada). For this work CG received airfare and per diem supplemented by the standards of PAHO. CG has been invited to present the Chilean experience during the influenza pandemic 2009 in various national and international conferences. CG currently works at the Universidad del Desarrollo (Santiago, Chile) as a teacher and researcher; also at EPI-Sur Consultants, an institution dedicated to providing advisory services and consulting in the field of international health for agencies, governments, and NGOs. EPI-Sur Consultants have worked for PAHO in the field of infectious diseases (not on influenza). VJL has received unrelated research funding from GlaxoSmithKline. JT received a travel grant from the Centers for Disease Control and Prevention (via an Influenza Cooperative Agreement Grant) to attend the "Options for the Control of Influenza VII" conference in Hong Kong, 3–7 September 2010, to present a poster entitled "Fatal pandemic influenza A(H1N1)2009 infections in HIV-infected persons, South Africa." All other authors have declared that no competing interests exist.

Abbreviations: BMI, body mass index; CI, confidence interval; ICU, intensive care unit; IQR, interquartile range; OR, odds ratio; RR, relative risk; TB, tuberculosis; WHO, World Health Organization

* E-mail: mounts@who.int

Introduction

In late April 2009, a novel strain of influenza A H1N1 was identified in Mexico and the United States. This virus quickly spread globally, and on June 11, 2009, the World Health Organization (WHO) declared a pandemic alert phase 6, indicating that the first influenza pandemic of the 21st century had begun [1–3]. Many Northern hemisphere temperate countries experienced their first wave of infection during the spring and summer months of 2009, followed by an early 2009 fall influenza season. Southern hemisphere temperate countries experienced the first wave of infection during their winter of 2009, and at the time of writing are finishing their winter 2010 season. By the end of 2009, the peak of the local influenza epidemic had passed in most countries around the world [4].

Since the start of the pandemic, WHO and member states have been gathering information to characterize the clinical picture and patterns of risk associated with the 2009 pandemic influenza A H1N1 (H1N1pdm) virus infection to assist public health policy makers in targeting of vaccination strategies, antiviral use, and other control measures. Risk factors for severe disease following seasonal influenza infection have been well documented in many countries, and include chronic medical conditions such as pulmonary, cardiovascular, renal, hepatic, neuromuscular, hematologic, and metabolic disorders, some cognitive conditions, and immunodeficiency [5–7]. The risk associated with seasonal influenza during pregnancy is less well documented but in previous pandemics, pregnant women were identified as being at increased risk of adverse outcomes, and many countries include healthy pregnant women among the seasonal influenza high risk groups as well [8–11]. However, early in the 2009 H1N1 pandemic, risk factors for severe disease following infection were largely unknown. Following a series of teleconferences organized by WHO with clinicians treating H1N1pdm patients around the world, it appeared that the most common risk factors for severe H1N1pdm disease were similar to those for seasonal influenza infection; however, several new factors (e.g., obesity and tuberculosis [TB]) were also observed with high frequency in some countries. It was also noted that members of indigenous/aboriginal communities in some countries appeared to be overrepresented among severe cases [12].

While many countries have recently reported data on the association between severe H1N1pdm influenza and the presence of a variety of underlying risk factors (e.g., [13–26]), these data are presented in different formats, making direct comparisons across countries difficult, and no clear consensus has emerged for some conditions. This paper presents data from approximately 70,000 lab-confirmed hospitalized and 2,500 fatal cases of H1N1pdm infection in 19 countries or administrative regions—Argentina, Australia, Canada, Chile, China, France, Germany, Hong Kong SAR, Japan, Madagascar, Mexico, the Netherlands, New Zealand, Singapore, South Africa, Spain, Thailand, the United States, and the United Kingdom—in order to characterize and compare the distribution of underlying risk factors among H1N1pdm confirmed patients who were hospitalized, admitted to an intensive care unit (ICU), or died, and to assess the frequency and distribution of known and new potential risk factors for severe H1N1pdm infection.

Methods

This study compares data primarily obtained from surveillance programs of the Ministries of Health or National Public Health Institutes of 19 countries or administrative regions covering the period 1 April 2009 to 1 January 2010. Countries were asked to

provide risk factor data on laboratory-confirmed cases using a standardized format for this analysis. The data were collected in the course of routine surveillance, methods of which varied from country to country [27–49], and were reported anonymously and as aggregate data; hence, no ethics approval was required. It should be noted that considerable effort was put into negotiating permission for these data to be presented in these formats. As many countries would not be willing to have their country-specific data published in direct comparisons with others, we are taking the approach of publishing data from a wide range of countries and showing the variability observed, so that results from specific studies can be compared with the international results reported here.

Potential risk factors were grouped into four categories: age, chronic medical illnesses, pregnancy (by trimester), and “other,” which included conditions that were not previously considered as risk factors for severe influenza outcomes, such as obesity, membership in a vulnerable social or ethnic group, and TB. Details of the standardized format and definitions of each of the conditions are provided in Text S1.

Risk factor information was collected separately for three levels of severity of illness in laboratory-confirmed patients: hospitalizations, admissions to ICU, and fatalities by country. Details of the available data from countries by risk factor and severity level are provided in Text S1. For each risk factor, except for pregnancy, the percentage of patients who were hospitalized, were admitted to ICU, and died was calculated using the total number of cases reported in each severity category. To evaluate the risk associated with pregnancy, the ratio of pregnant women to all women of childbearing age (age 15–49 y) in each level of severity was used to describe the differences between levels. The overall median and interquartile ranges (IQRs) were calculated for each risk factor using all available data. In addition, where available, countries provided baseline comparison data for prevalence of the risk factor in the general population (details and sources provided in Text S1). Data on age were provided by age groups (<5, 5–14, 15–24, 25–49, 50–64, and ≥65 y).

Risk of Severe Disease

Where data were available, we calculated the risk for severe H1N1pdm outcomes (hospitalization, admission to ICU, and death) compared to the prevalence of risk factors in the general population (relative risk [RR] of hospitalization [RR_{hosp}], RR of ICU admission [RR_{ICU}], and RR of death [RR_{death}]) by country. See Text S1 for more information and formulae.

For pregnancy, we first calculated the proportion of women of childbearing age who were pregnant in each severity category by dividing the number of pregnant women in that category by the number of women of childbearing age in that category. As individual case data were not available, we calculated the number of fertile women in each level of severity using the numbers of patients in each level of severity in the age range between 15 and 49 y multiplied by the percentage for that severity level that was female. Unless provided by the country, the point prevalence of pregnant women in the general population (the denominator of the RR calculation) was calculated using crude birth rate and 2010 United Nations population estimates [50] to derive the annual number of pregnancies, multiplied by 40/52 and without adjusting for seasonality of pregnancies, abortions, miscarriages, early deliveries, or multiple births. We also calculated the country-specific odds ratios (ORs) and 95% confidence intervals (CIs) for death given hospitalization separately for each risk factor (i.e., the odds of death given hospitalization and a specific risk factor), thereby comparing the odds of death in one group (e.g., among

hospitalized patients with asthma) with the odds of death in all other hospitalized patients combined (e.g., among hospitalized patients without asthma) (individual country ORs not shown). We then used the I^2 statistic to quantify the percentage of variation across countries that is due to true underlying heterogeneity in the ORs rather than chance variability [51]. The I^2 statistics for all examined risk factors indicated that there was substantial true underlying variation between ORs from different countries. We undertook meta-analyses with and without random effects in parallel to describe the distribution of the OR estimates across the countries for which data were available for analysis. As expected, given the heterogeneity observed between countries, the random effects meta-analysis yielded wider CIs. We conservatively report the pooled estimates from the random effects meta-analysis to describe the distribution of the OR estimates across the countries for which data were available for analysis. Underlying the random effects approach is the assumption that, although the individual countries give rise to different OR estimates, these estimates arise from a distribution with a central value, the estimate of which is referred to as the “pooled OR,” and normally distributed variability around this value. However, because of the limited number of countries in each analysis, the number of random effects is too small for diagnostics such as quantile–quantile plots to demonstrate whether the assumption of a normal distribution is valid.

Finally, with a meta-analysis of data from such diverse countries as those included in this study, reasons for heterogeneity were sought through exploratory meta-regression analyses. However, because of the limited number of countries included in the meta-regression models, and with country being the unit of analysis, the meta-regression results were not considered to be robust and so are not presented or discussed further [52].

All meta-analyses and meta-regression techniques were performed using Stata version 10 (StataCorp).

Results

Data were collected on approximately 70,000 patients requiring hospitalization, 9,700 patients admitted to ICU, and 2,500 fatalities from 19 countries and administrative regions across the Americas, Asia, Europe, and Africa.

Age and Gender

Approximately half of all patients included in this analysis in each level of severity were female (49.8%, 47.0%, and 44.7% of all hospitalized, ICU-admitted, and fatal H1N1pdm cases, respectively). This proportion did not vary significantly by country (Table 1). Age was associated with increased risk of poor outcome, as indicated by several different parameters. The median age of patients increased with increasing levels of severity (Table 1). Among hospitalized patients, the median age within each country ranged from 7 y in Japan to 38 y in Spain, with a median reported value among all countries that provided data ($n = 14$) of 19 y (IQR 14.8–27.5); among patients admitted to ICU, the median age within each country ranged from 28 y in China to 49.5 y in Hong Kong SAR, with a median value among all countries that provided data ($n = 9$) of 42 y (IQR 35.0–45.0); and among fatal cases, median age within each country ranged from 30 y in China to 56 y in Hong Kong SAR, with a median value among all countries that provided data ($n = 13$) of 46 y (IQR 37.0–42.0). When the age distribution of the proportion of patients in each level of severity was compared to the distribution in the general population, the RR was highest in the age groups <5 y and 5–14 y ($RR_{\text{hosp}} = 3.3$ and 3.2, respectively) but the RR of death

was highest in the age groups 50–64 y and ≥ 65 y ($RR_{\text{death}} = 1.6$ and 1.7, respectively) (Figure 1). The ratio of H1N1pdm deaths to hospitalizations increased with age and was the highest in the ≥ 65 -y-old age group in all countries for which data were available (Figure 2).

Chronic Illness

The proportion of H1N1pdm patients with at least one chronic medical condition generally increased with severity (median among all countries that provided data was 31.1% [$n = 14$], 52.3% [$n = 10$], and 61.8% [$n = 16$] of hospitalized, ICU-admitted, and fatal H1N1pdm cases, respectively (Table 1). This pattern was observed for most countries (individual country data not shown). For nearly every individual risk factor under study, the prevalence increased significantly with severity level. Chronic respiratory conditions excluding asthma (median = 10.3%, 17.2%, and 20.4%, respectively) and asthma (median = 17.6%, 9.8%, and 5.3%, respectively) were the risk factors most often reported among severe cases, followed closely by diabetes (median = 9.0%, 13.6%, and 14.4%, respectively) and chronic cardiac conditions (median = 7.1%, 10.9%, and 12.1%, respectively). The pooled OR for death given hospitalization was significantly above one for each risk factor listed, with the exception of asthma, and was highest for chronic liver disease and immunocompromised patients (Figure 3).

The risk of severe disease due to H1N1 infection, including hospitalization and death, was elevated for every chronic condition for which data were available (Table 1). Notably, the RR for fatal disease due to H1N1pdm infection was elevated for asthma (median $RR_{\text{death}} = 1.7$ [IQR 1.5–2.1]) and not markedly different from the RR associated with hospitalizations (median $RR_{\text{hosp}} = 1.8$ [IQR 1.2–2.6]). Data on chronic illness rates in the general population were not available from enough countries to permit an assessment of the relative magnitude of risk associated with various conditions with certainty.

Pregnancy

The proportions of women of childbearing age who were hospitalized with H1N1 and were pregnant as part of all hospitalizations (median of all country data = 17.4% [IQR 13.5–30.2]), who were admitted to ICU (median of all country data = 15.0% [IQR 9.4–24.2]), and who died (median of all country data = 6.9% [0.0–9.1]) varied within each country. Pregnant women in their third trimester consistently accounted for more than half of all pregnant women among hospitalized, ICU-admitted, and fatal cases. However, with the exception of China, Thailand, and the US, the proportion of pregnant women decreased with increasing level of severity, and the pooled OR for death given hospitalization during pregnancy was below 1 (pooled OR = 0.6, 95% CI 0.2–2.5).

Pregnant women with H1N1pdm infection were at higher risk of hospitalization than women of childbearing age in the general population without H1N1pdm infection, with an unadjusted RR of hospitalization ranging from 3.5 in Germany to 25.3 in France (median $RR_{\text{hosp}} = 6.8$, $n = 10$ countries). The unadjusted RR of death, while elevated compared to non-pregnant women in more than half of countries, was generally lower than that for hospitalization, with a median RR_{death} of 1.9 ($n = 11$ countries). Four areas (Japan, the Netherlands, Hong Kong SAR, and Singapore) had a RR_{death} of zero.

Other Risk Factors

The proportion of patients with obesity (body mass index [BMI] ≥ 30 or clinically judged as obese) increased with increasing disease severity and represented a median of 6%, 11.3%, and

Table 1. Risk factors by severity level for select countries and risk of severe disease.

Risk Factor ^a	Severity Level ^b						RR of Severe Disease (IQR) ^c			
	<i>n</i> ^d	Hospitalized Cases	<i>n</i> ^d	ICU-Admitted Cases	<i>n</i> ^d	Fatal Cases	<i>n</i> ^d	RR _{hosp}	<i>n</i> ^d	RR _{death}
Age	14	19.0 (14.8–27.5)	9	42.0 (35.0–45.0)	13	46.0 (37.0–52.0)	— ^e	— ^e		
Gender (percent female)	12	49.8 (46.2–51.5)	11	47.0 (41.9–50.5)	14	44.7 (41.5–48.7)	12	1.0 (0.8–1.1)	14	0.8 (0.7–1.0)
Chronic medical illness										
Respiratory disease	12	10.3 (5.0–21.7)	11	17.2 (10.5–29.9)	16	20.4 (9.3–29.5)	5	3.3 (2.0–5.8)	8	7.8 (4.9–26.6)
Asthma	11	17.6 (10.0–20.4)	9	9.8 (5.6–14.3)	15	5.3 (4.0–10.6)	3	1.8 (1.2–2.6)	6	1.7 (1.5–2.1)
Diabetes	14	9.0 (3.5–12.6)	12	13.6 (9.3–17.3)	17	14.4 (13.0–18.0)	7	0.9 (0.5–1.7)	10	4.0 (3.1–6.9)
Cardiac disease	12	7.1 (3.7–10.9)	11	10.9 (8.8–15.0)	15	12.1 (10.0–16.4)	6	2.0 (1.5–2.2)	8	9.2 (5.4–10.7)
Renal disease	13	4.0 (2.0–5.1)	11	6.3 (3.5–8.4)	16	7.1 (5.0–8.1)	2	4.4 (4.2–4.5)	3	22.7 (21.0–25.4)
Liver disease	9	1.1 (0.3–2.0)	9	2.4 (0.9–5.0)	12	4.9 (2.7–6.0)	3	5.7 (3.2–15.7)	4	17.4 (11.6–28.0)
Neurological disease	11	4.0 (2.5–7.5)	11	7.0 (3.5–9.5)	14	13.9 (5.5–18.4)	2	1.1 (0.9–1.3)	3	13.1 (8.4–32.4)
Immune compromised	13	5.0 (2.0–7.2)	11	6.7 (3.2–18.4)	15	12.5 (7.9–18.4)	2	24.3 (16.1–32.6)	4	27.7 (14.0–66.5)
Cases with ≥1 chronic medical illnesses	14	31.1 (19.0–47.1)	10	52.3 (41.1–58.7)	16	61.8 (48.5–67.9)	NA	NA		NA
Pregnancy^f										
First trimester	7	2.0 (1.0–3.5)	6	2.0 (1.5–2.5)	5	0.9 (0.0–2.5)				
Second trimester	7	7.0 (3.9–9.3)	7	5.0 (1.7–6.2)	5	2.5 (0.0–14.1)				
Third trimester	7	9.5 (7.6–21.3)	8	8.0 (4.0–14.6)	6	16.9 (5.1–32.0)				
Unknown trimester	8	6.0 (1.9–9.3)	6	2.8 (1.7–3.2)	7	0.0 (0.0–2.1)				
Total (any trimester)	10	17.4 (13.5–30.2)	9	15.0 (9.4–24.2)	11	6.9 (0.0–9.1)	10	6.8 (4.5–12.3)	11	1.9 (0.0–2.6)
Obesity										
BMI ≥30 or clinically obese	11	6.0 (1.5–7.5)	8	11.3 (7.9–15.8)	13	12.0 (10.0–21.0)	6	0.6 (0.2–1.8)	7	1.5 (0.9–2.8)
BMI = 30–40	3	7.0 (4.4–16.0)	3	10.0 (6.9–18.5)	4	15.8 (7.7–25.2)	NA	NA		NA
BMI >40	5	3.0 (1.4–11.5)	5	5.0 (3.4–16.4)	6	15.2 (4.0–30.8)	2	15.0 (9.5–20.4)	2	36.3 (22.4–50.1)
BMI not measured but judged clinically obese	8	4.3 (1.8–13.3)	4	4.4 (3.4–5.3)	8	7.8 (3.8–17.3)	NA	NA		NA
Vulnerable social/ethnic group	4	5.2 (2.3–10.6)	4	5.0 (1.5–10.7)	4	10.1 (5.3–18.5)	4	1.0 (0.2–3.7)	4	2.4 (1.2–3.8)
TB	2	1.7 (0.9–1.8)	2	1.3 (1.0–1.6)	4	2.6 (0.8–5.9)	NA	NA		NA

^aSee Text S1 for definitions of risk factors.

^bAll data given as median percent (IQR), except for age, which is median (in years) (IQR).

^cRR_{hosp} is the unadjusted RR of hospitalization among H1N1pdm patients with the risk factor compared to the risk of hospitalization among H1N1pdm patients without the risk factor, and RR_{death} is the unadjusted RR of death among H1N1pdm patients with the risk factor compared to the risk of death among H1N1pdm patients without the risk factor; range of RR provided if ≥2 countries provided data.

^dThe number of countries providing data for cell directly to the right; the full list of countries that provided data for each risk factor is provided in Text S1.

^eRR_{hosp} and RR_{death} calculated by age group and shown in Figure 1.

^fDenominator is women of childbearing age in each level of severity.

NA, not assessed.

doi:10.1371/journal.pmed.1001053.t001

12.0% of all hospitalized, ICU-admitted, and fatal H1N1pdm cases, respectively, and this pattern was also observed for morbid obesity (BMI >40), with 3.0%, 5.0%, and 15.2%, respectively (Table 1). However, this pattern was not consistently reported in each country. For example, France, Thailand, and China observed similar proportions of obese patients among ICU-admitted and fatal cases, while Hong Kong SAR reported a lower prevalence of obesity among fatal cases than among ICU admissions. Using data from all countries, the pooled OR for death given hospitalization for obesity (BMI ≥30 or clinically judged as obese) was 2.9 (95% CI 1.3–6.6; Figure 3). Compared to the general population in the two countries for which data were available, the risk of death associated with morbid obesity was increased (mean RR_{death} = 36.3 [IQR 22.4–50.1], *n* = 2).

Canada, Australia, and New Zealand reported significant disparities in the burden of severe H1N1pdm disease across different ethnic groups. In these three countries, indigenous population groups were overrepresented among severe H1N1pdm cases requiring hospitalization and among fatal cases. In contrast, in Thailand and Mexico, minority groups were underrepresented among severe H1N1pdm cases. Taken together, the unadjusted median RR of hospitalization for H1N1pdm patients among minority groups was 1.0 (IQR 0.2–3.7) and the median RR of death was 2.4 (IQR 1.2–3.8). TB data were reported from three countries, and the incidence increased slightly with level of severity. The disease was reported in a median of 1.7%, 1.3%, and 2.6% of hospitalized, ICU-admitted, and fatal H1N1pdm cases, respectively. We were not specifically able to evaluate HIV

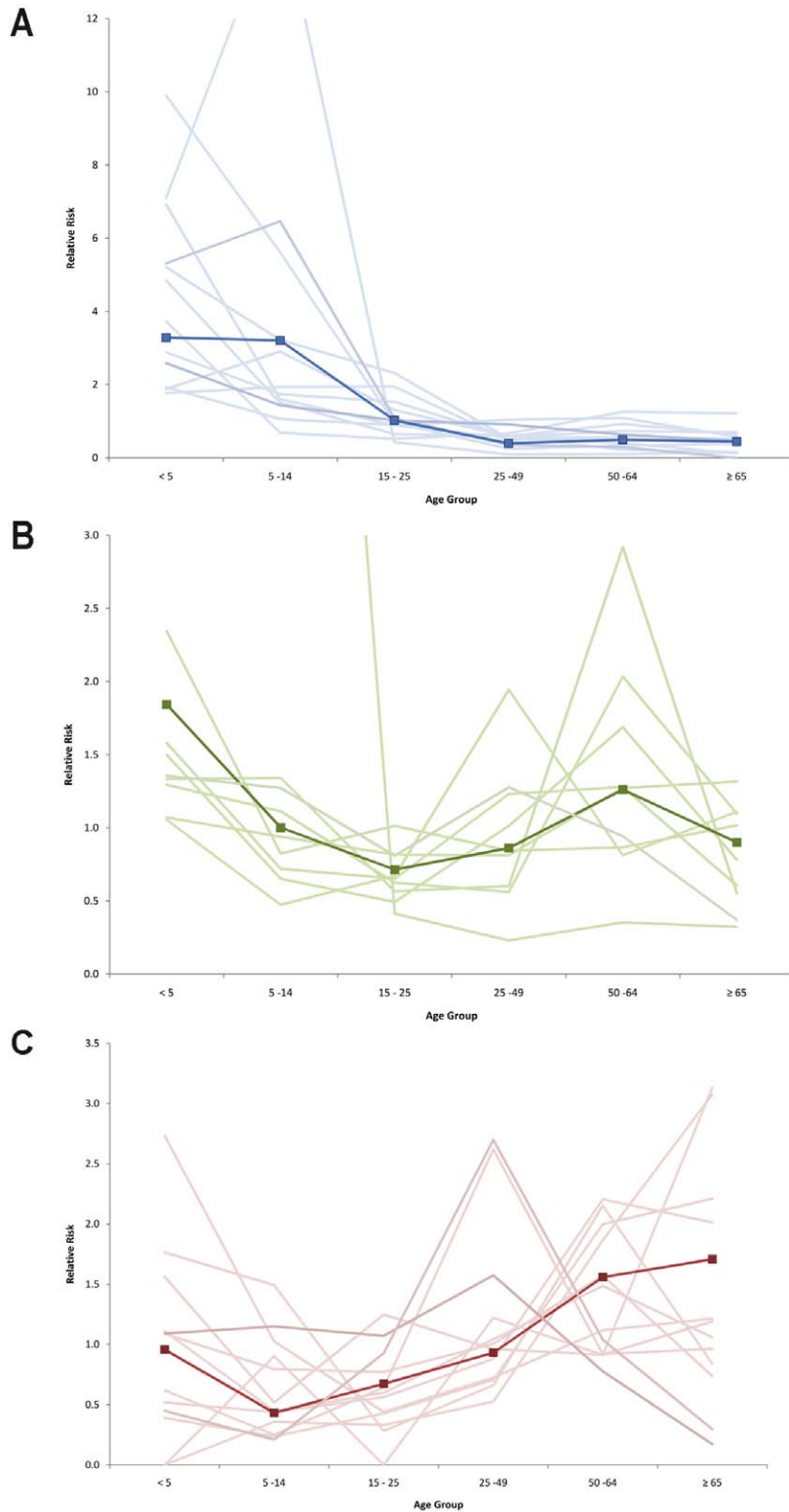


Figure 1. Relative risk of hospitalization, ICU admission, and death by age group compared to the general population. Countries included in hospitalization (A) and mortality (C) RRs: Japan, Hong Kong SAR, China, Singapore, Thailand, Chile, Germany, the Netherlands, Spain, New Zealand, Canada, US, Madagascar (hospitalizations only), and France (deaths only). Countries included in ICU admission RR (B): Japan, Hong Kong SAR, China, Singapore, Canada, Spain, the Netherlands, US, New Zealand, and South Africa. Dark line represents pooled RR; shaded lines are individual country RR.
doi:10.1371/journal.pmed.1001053.g001

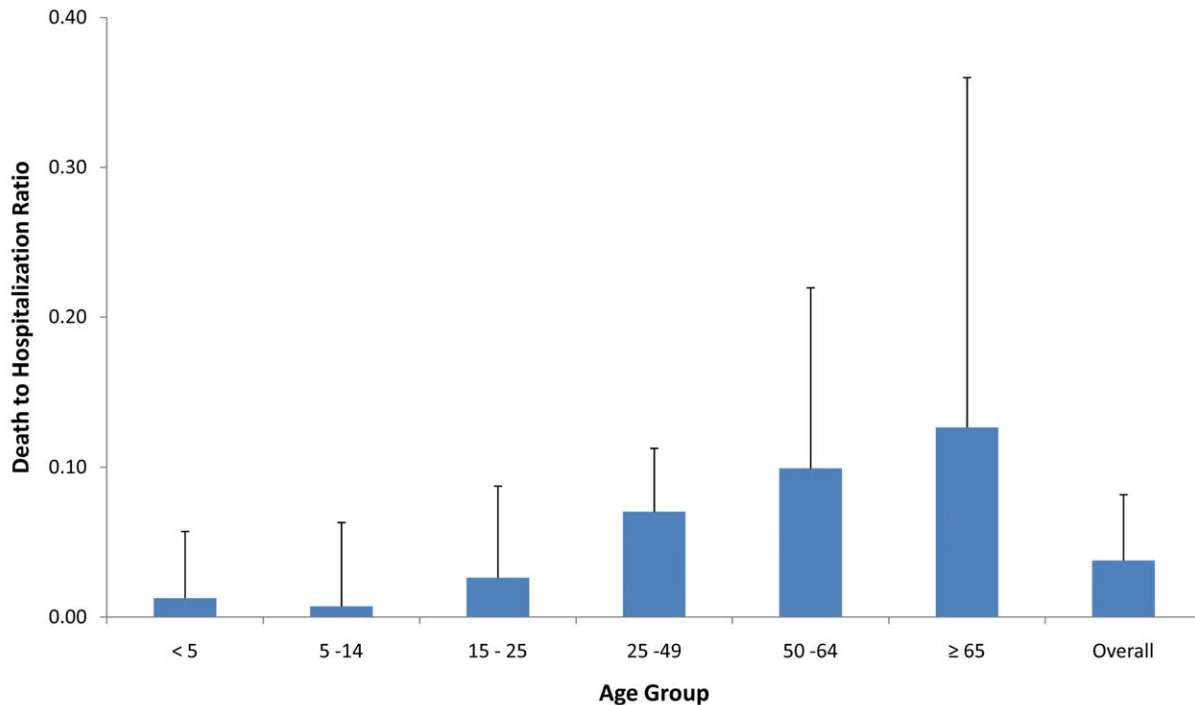


Figure 2. Ratio of confirmed H1N1pdm deaths to hospitalizations for selected countries. Countries included in figure: Spain, Singapore, China, Hong Kong SAR, Canada, the Netherlands, Thailand, Chile, Germany, Japan, US, and New Zealand. Bars represent maximum country ratio. doi:10.1371/journal.pmed.1001053.g002

incidence because of a paucity of data on HIV in H1N1pdm patients.

Discussion

Our analysis represents to our knowledge the first comprehensive assessment of the frequency and distribution of risk factors for severe H1N1pdm infection from a global perspective, with data from approximately 70,000 patients requiring hospitalization, 9,700 patients admitted to ICU, and 2,500 fatalities from 19 countries and administrative regions around the world. Consistent with other published data, our results reaffirm that the age distribution of severe H1N1pdm cases significantly differs from that of seasonal influenza [53–56]. The highest rates of hospitalization per capita were in children <15 y, but the highest rates of mortality per capita were in persons over 64 y. The low apparent attack rate in the oldest age group, evidenced by low rates of hospitalization, and the high odds associated with age in the fatal group compared to hospitalized cases seems to indicate that although older adults may have a lower risk of infection, they have a significantly higher risk of death if they are infected [54,57–61]. It is likely that increasing prevalence of chronic risk conditions in the oldest age group contributes to this effect, but our data do not allow for quantification of this association.

Our results demonstrate that in a significant portion of severe and fatal cases, patients had preexisting chronic illness, and that the presence of chronic illness increased the likelihood of death. It was notable, however, that approximately 2/3 of hospitalized cases and 40% of fatal cases did not have any identified preexisting

chronic illness. It is unknown how many of these cases had other risk factors, such as pregnancy, obesity, and substance abuse (including smoking and alcohol), for which we had insufficient information in this study. These figures are also dependent on the completeness of available data for recorded risk factors. As with seasonal influenza, the most common underlying chronic conditions among hospitalized patients were respiratory disease, asthma, cardiac disease, and diabetes. Interestingly, we found that although asthma was frequently associated with both hospitalization and death in most countries, with an increased RR for both, the OR for death given hospitalization suggested that a higher proportion of hospitalized cases survived compared to patients with other conditions. This may represent the occurrence of manageable influenza-induced exacerbations of asthma prompting admission that do not progress to viral pneumonia or other fatal complications, and may also reflect the fact that asthma tends to occur in younger age groups [62].

Early data suggested that pregnancy might be an important risk factor for severe disease with H1N1pdm [21,25,63,64]. Our analysis is consistent with these reports and more recent studies [47,65], which found an overall trend that pregnant women, mainly in their third trimester, have a higher incidence of hospitalization than the general population. Several published studies have also shown that pregnancy is associated with a higher risk of ICU admission and fatal outcome [54,58,66,67]. In our analysis, the risk associated with pregnancy was elevated for both hospitalization and fatality compared to women of childbearing age, though the latter association was not consistently observed in every country. As with asthma, the proportion of pregnant women

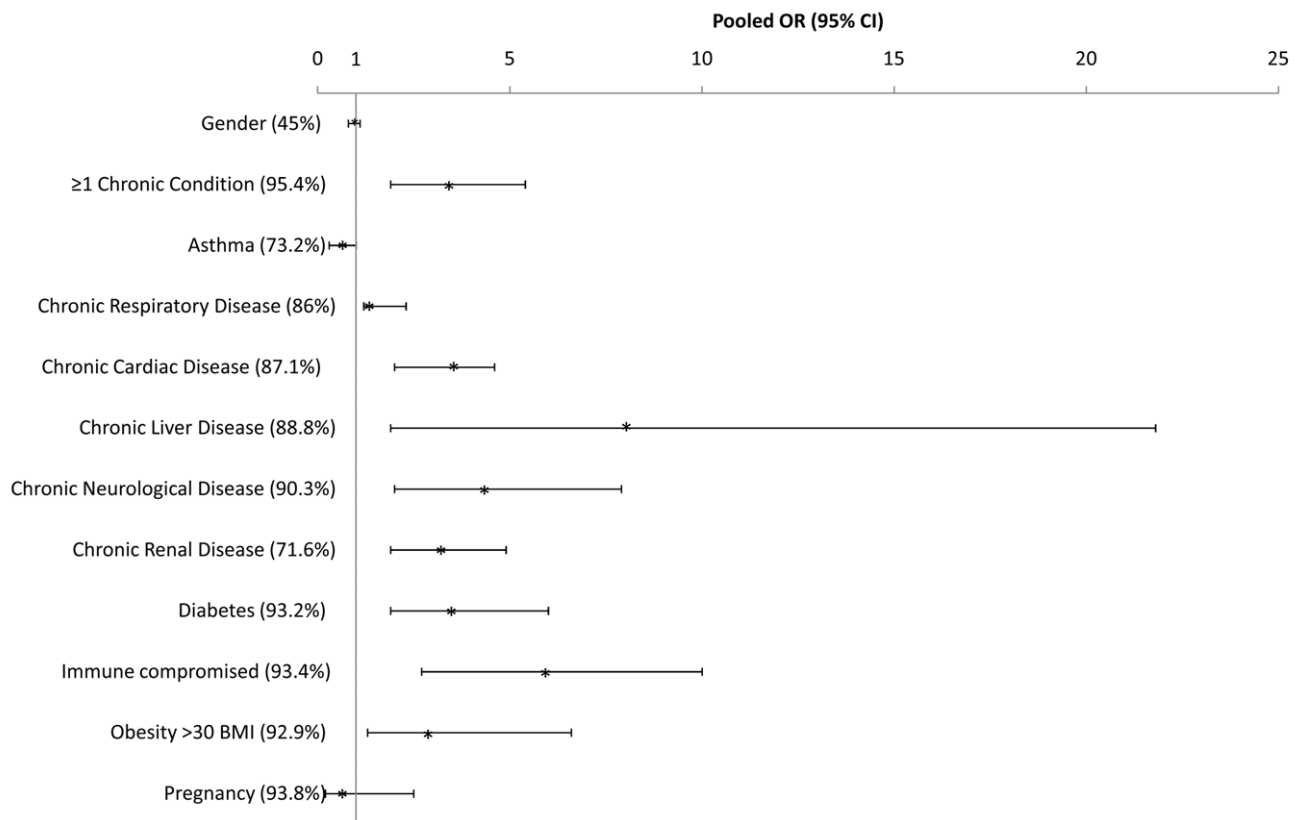


Figure 3. Pooled odds ratio and 95% CIs of risk of death given hospitalization for selected countries. See Text S1 for countries included in the pooled risk factor ORs.
doi:10.1371/journal.pmed.1001053.g003

generally decreased with severity level for most of the countries. Our results suggest that pregnant women with H1N1pdm are approximately seven times more likely to be hospitalized and two times more likely to die than non-pregnant women with H1N1pdm. The greater risk for hospitalization than for death with H1N1pdm influenza infection during pregnancy may have resulted from a lower threshold for admitting infected pregnant women to hospital and/or a more aggressive approach to antiviral or other treatment for pregnant women. In addition, the occurrence of non-respiratory complications of pregnancy, such as hypertension, pre-eclampsia, and premature labor, provoked by H1N1pdm infection may have increased the risk of hospitalization while not resulting in death [68]. This would be consistent with published reports of case series of pregnant patients that list complications of pregnancy as a common cause of admission [63,69,70]. The dataset did not allow us to adjust for underlying conditions in pregnant women, and thus to distinguish between risks for healthy pregnant women, and pregnant women with underlying medical conditions; however, we believe that the results support an approach of early intervention with pregnant women who develop influenza.

Early in the 2009 pandemic, clinicians from the US reported a surprisingly high prevalence of morbid obesity, a risk factor not previously associated with severe outcomes for seasonal influenza infection, in patients with severe complications of H1N1pdm infection [71]. Subsequent studies in several countries, including the US, Mexico, Canada, Spain, Greece, France, Australia, and New Zealand, reported high proportions of obesity among ICU admissions and fatal cases [13,20,58,64,72–77]. Our results provide supportive evidence that obesity may be a risk factor for

severe disease, as seen in the increasing proportion of morbidly obese patients with severity level and the associated elevated OR. Our findings also suggest that morbidly obese patients with H1N1pdm are more likely to die if hospitalized; however, the results in our analysis were not consistent across all countries. The association between obesity (or morbid obesity) and severe outcomes may reflect direct causation (e.g., due to greater respiratory strain of infection on obese individuals), causation through other known risk factors (e.g., obesity causes diabetes and heart disease, which pose an increased risk for severe outcome [36]), or a noncausal association, if some other factor (e.g., genetic or dietary) caused both morbid obesity and increased risk of severe outcome. Unfortunately, our dataset did not allow us to distinguish among these nonexclusive alternatives.

Indigenous populations and ethnic minorities have been reported to experience a disproportionately high burden of severe H1N1pdm infection, particularly in the Americas [14,21,23,36, 64,75,78–80] and the Australasia-Pacific region [43,80–82], similar to reports during the 1918 influenza pandemic [83–85]. Our analysis of Australian, New Zealand, and Canadian data concur with these published reports, and while compelling, were not universal. Neither Thailand nor Mexico observed a significantly increased burden of severe H1N1pdm disease among indigenous or minority populations. Our data are not sufficient to explain the observed differences in the reported risk of severe disease among minority groups, but several hypotheses have been proposed, including a higher prevalence of chronic medical conditions known to increase risk of severe influenza, delayed or reduced access to healthcare, cultural differences in healthcare-seeking behavior and approaches to health, potential differences in

genetic susceptibility, and social inequalities [23,78,80]. More research is needed to better understand and quantify the increased risk of severe H1N1pdm disease among these groups. However, an imperfect understanding of the mechanisms of health disparities related to severe H1N1pdm disease should not impede the public health community in undertaking actions to mitigate this risk by disseminating appropriate public information, targeting outreach and prevention programs, and involving at-risk population groups in pandemic planning.

Our analysis has a number of limitations, not least of which is the wide differences in surveillance systems, case management policies, and antiviral use in the countries studied. The criteria and indications for hospital and ICU admission for certain conditions (e.g., pregnancy and asthma) and by age (e.g., pediatric patients) varied significantly by country, and may have been somewhat dependent on capacity for admission, which likely varied over time. Risk factors are also dependent on the completeness and quality of data on risk factors reported and classification of death in the absence of complete testing. These variables could lead to a bias in the estimate of these conditions among severe cases and could make direct comparisons across countries difficult. Second, our data do not consider multiple risk factors for individual H1N1pdm patients. A lack of individual-level data on underlying medical conditions of H1N1pdm patients precludes our ability to sufficiently control for confounding and therefore identify the independent contribution of individual risk factors for severe disease and death. The differences observed in risk factors for hospitalization and death among H1N1pdm patients compared to among seasonal influenza patients, and the wide range of RR values between countries may be explained by differences in age structure in the general population. Several studies have identified important differences in the proportions of underlying conditions by age among hospitalized and fatal cases, including, but not limited to, the UK [15,53], the US [36], Canada [47], and Singapore [39,86].

A third limitation is related to our imperfect calculation of the point prevalence of pregnancy among women of childbearing age in the general population. However, we believe that our findings of the range of RR values for hospitalization and death is valid, but may be very slightly inflated because of undercounting in the denominator. The inflationary effect of undercounting is likely greatest for pregnant women in the first trimester, as we didn't adjust for common first trimester events such as miscarriages or abortions, and in this group there is likely substantial undercounting in the numerator as well because of women not knowing they are pregnant in that period. Fourth, the data used in our analysis relied on hospital records, which were not standardized, and were likely to be incomplete or vary in quality between hospitals or countries. This poses a problem in the direct comparativeness between settings.

Despite these limitations, this analysis is the first to our knowledge to compare risk factors across a variety of countries using data from a very large number of patients, and we found a great deal of consistency for much of the data. Clearly, cardiac disease, chronic respiratory disease, and diabetes are important risk factors for severe disease that will be especially relevant for countries with high rates of these illnesses. We provide evidence to support the concern regarding obesity, particularly morbid obesity, as a risk factor, though this needs more study. We found large between-country variations for some important risk factors,

most notably pregnancy, and the reasons for these differences need more study. There is evidence to suggest that the differences observed for pregnancy might represent differences in case management practices, and we believe that the available evidence supports vaccination and early intervention for pregnant women. Our study reinforces the need to identify and target high-risk groups for interventions, such as immunization, information, early medical advice, and use of antiviral medications. Experience with the 2009 H1N1 pandemic and the differences observed between countries have highlighted the need for country-specific surveillance data and global standardization of case definitions and data collection, and the usefulness of data sharing to aid policy makers in critical decision making for global influenza epidemics.

Supporting Information

Text S1 Supplemental data and analysis.
(PDF)

Acknowledgments

All the listed authors are members of the WHO Working Group for Risk Factors for Severe H1N1pdm Infection. The authors would like to recognize the hard work of all the individuals—including general practitioners, nurses, and other healthcare workers; municipal health centers, hospitals, virology laboratories, and reference labs; and the Ministries of Health—who provided care to H1N1pdm patients, provided data and information, and kept the public informed. The authors would like to specifically acknowledge Anna Bramley, MPH, from the Influenza Division at the Centers for Disease Control and Prevention, who managed and analyzed the US data; Marta Cortes-García, MD, MPH, from the Coordinating Centre for Health Alerts and Emergencies, who collected and managed the Spanish data; the Regional Surveillance and Alert Teams from the Autonomous Communities in Spain; Liao Qiaohong and Feng Luzhao from China Centers for Disease Control and Huai Yang from the China–U.S. Collaborative Program on Emerging and Re-Emerging Infectious Diseases, Beijing, China; Tessa van't Klooster and Tjibbe Donker from the Epidemiology and Surveillance Unit, and Leslie Isken from the Preparedness and Response Unit, for severe acute respiratory infection surveillance coordination at the Centre for Infectious Disease Control, National Institute for Public Health and the Environment (RIVM), Bilthoven, the Netherlands; and Cheryl Cohen from the National Institute for Communicable Diseases, South Africa. The authors also wish to acknowledge the six restructured and six private hospitals in Singapore that provided reports of laboratory-confirmed hospitalized H1N1pdm cases.

Finally, the authors would also like to thank Matthew Lim and Lyn Finelli for their review of the manuscript.

Author Contributions

Conceived and designed the experiments: AWM MDVK KAHV VS GJG. Analyzed the data: MDVK KAHV VS GJG AWM CAD AK. Wrote the paper: MDVK KAHV VS GJG AWM. ICMJE criteria for authorship read and met: MDVK KAHV VS GJG LOC RO LP JV CG YH FZ SKC AA SB GK WH IB KT KN TS YT TS JMH AO EP MABV LW DH JC VJL JT PSO MJS WH JKU RP SJ AWM CAD AK. Agree with the manuscript's results and conclusions: MDVK KAHV VS GJG LOC RO LP JV CG YH FZ SKC AA SB GK WH IB KT KN TS YT TS JMH AO EP MABV LW DH JC VJL JT PSO MJS WH JKU RP SJ AWM CAD AK. Wrote the first draft of the paper: MDVK KAHV VS GJG AWM. Reviewed and edited several versions of the manuscript: LOC RO LP JV CG YH FZ SKC AA SB GK WH IB KT KN TS YT TS JMH AO EP MABV LW DH JC VJL JT PSO MJS WH JKU RP SJ.

References

- Centers for Disease Control and Prevention (2009) Update: swine influenza A (H1N1) infections—California and Texas, April 2009 MMWR Morb Mortal Wkly Rep 58: 435–437. Available: <http://www.cdc.gov/mmwr/preview/mmwrhtml/mm5816a7.htm>. Accessed 22 January 2010.
- World Health Organization (2009) Swine influenza—update 3. Available: http://www.who.int/csr/don/2009_04_27/en/index.html. Accessed 22 January 2010.
- Chan M (2009 April 25) Swine influenza: statement by WHO Director-General, Dr Margaret Chan. Available: <http://www.who.int/mediacentre/>

- news/statements/2009/h1n1_20090425/en/index.html. Accessed 21 January 21 2010.
- World Health Organization (2010) Evolution of a pandemic: A(H1N1) 2009, April 2009–March 2010. Geneva: World Health Organization.
 - National Center for Immunization and Respiratory Diseases (2009) Use of influenza A (H1N1) 2009 monovalent vaccine. Recommendations of the Advisory Committee on Immunization Practices (ACIP), 2009. *MMWR Recomm Rep* 58(RR-10): 1–8.
 - Fiore A, Shay D, Broder K, Uyek T, Mootrey G, et al. (2009) Prevention and control of influenza, recommendations of the Advisory Committee on Immunization Practices (ACIP), 2008. *MMWR Recomm Rep* 57(RR-7): 1–60.
 - Mereckiene J, Cotter S, Nicoll A, Levy-Bruhl D, Ferro A, et al. (2008) National seasonal influenza vaccination survey in Europe, 2008. *Euro Surveill* 13: pii: 19017.
 - Dodd L, McNeil SA, Fell DB, Allen VM, Coombs A, et al. (2007) Impact of influenza exposure on rates of hospital admissions and physician visits because of respiratory illness among pregnant women. *CMAJ* 176: 463–468.
 - Freeman DW, Barno A (1959) Deaths from Asian influenza associated with pregnancy. *Am J Obstet Gynecol* 78: 1172–1175.
 - Harris JW (1919) Influenza occurring in pregnant women. *JAMA* 72: 978–980.
 - Neuzil KM, Reed GW, Mitche EF, Simonsen L, Griffin MR (1998) Impact of influenza on acute cardiopulmonary hospitalizations in pregnant women. *Am J Epidemiol* 148: 1094–1102.
 - World Health Organization (2009) Clinical features of severe cases of pandemic influenza. Pandemic (H1N1) 2009 briefing note 13. Available: http://www.who.int/csr/disease/swineflu/notes/h1n1_clinical_features_20091016/en/index.html. Accessed 19 May 2011.
 - The ANZIC Influenza Investigators (2009) Critical care services and 2009 H1N1 influenza in Australia and New Zealand. *N Engl J Med* 361: 1925–1934. Available: <http://www.nejm.org/doi/full/10.1056/NEJMoa0908481#t=article>. Accessed 19 May 2011.
 - Centers for Disease Control and Prevention (2009) Deaths related to 2009 pandemic influenza A (H1N1) among American Indian/Alaska Natives—12 states, 2009. *MMWR Morb Mortal Weekly Rep* 58: 1341–1344.
 - Donaldson LJ, Rutter PD, Ellis BM, Greaves FEC, Mytton OT, et al. (2009) Mortality from pandemic A/H1N1 2009 influenza in England: public health surveillance study. *BMJ* 339: b5213.
 - BinSaeed A (2010) Characteristics of pandemic influenza A (H1N1) infection in patients presenting to a university hospital in Riyadh, Saudi Arabia. *Ann Saudi Med* 30: 59–62.
 - Centers for Disease Control and Prevention (2009) Novel influenza A (H1N1) virus infections in three pregnant women—United States, April–May 2009. *MMWR Morb Mortal Weekly Rep* 58: 497–500.
 - Centers for Disease Control and Prevention (2009) Hospitalized patients with novel influenza A (H1N1) virus infection—California, April–May, 2009. *MMWR Morb Mortal Weekly Rep* 58: 536–541.
 - Palacios G, Hornig M, Cisterna D, Savji N, Bussetti A, et al. (2009) Streptococcus pneumoniae coinfection is correlated with the severity of H1N1 pandemic influenza. *PLoS ONE* 4: e8540. doi:10.1371/journal.pone.0008540.
 - Fuhrman C, Bonmarin I, Paty A, Dupont N, Chiron E, et al. (2010) Severe hospitalised 2009 pandemic influenza A(H1N1) cases in France, 1 July–15 November 2009. *Euro Surveill* 15: pii: 19463. Available: <http://www.eurosurveillance.org/ViewArticle.aspx?ArticleId=19463>. Accessed 19 May 2011.
 - Louie JK, Acosta M, Winter K, Jean C, Gavali S, et al. (2009) Factors associated with death or hospitalization due to pandemic 2009 influenza A(H1N1) infection in California. *JAMA* 302: 1896–1902.
 - Chien Y, Su C, Tsai H, Huang S, Chuang J, et al. (2009) The first 100 hospitalized severe complicated influenza cases caused by 2009 pandemic influenza A (H1N1) in Taiwan. *Taiwan Epidemiology Bulletin*. Available: http://tc.cdc.gov.tw/public/Attachment/23552_25-10-%E8%8B%B12-692-707.pdf. Accessed 19 May 2011.
 - Zarychanski R, Stuart TL, Kumar A, Doucette S, Elliott L, et al. (2010) Correlates of severe disease in patients with 2009 pandemic influenza (H1N1) virus infection. *CMAJ* 182: 257–264.
 - Cullen G, Martin J, O'Donnell J, Boland M, Canny M, et al. (2009) Surveillance of the first 205 confirmed hospitalised cases of pandemic H1N1 influenza in Ireland, 28 April–3 October 2009. *Euro Surveill* 14: pii: 19389.
 - Denholm J, Gordon C, Johnson P, Hewagama S, Stuart R, et al. (2010) Hospitalised adult patients with pandemic (H1N1) 2009 influenza in Melbourne, Australia. *MJA* 192: 84–86.
 - Yang P, Deng Y, Pang X, Shi W, Li X, et al. (2010) Severe, critical and fatal cases of 2009 H1N1 influenza in China. *J Infect* 61: 277–283. doi: 10.1016/j.jinf.2010.07.010.
 - Shimada T, Gu Y, Kamiya H, Komiya N, Odaira F, et al. (2010) Epidemiology of influenza A(H1N1)v virus infection in Japan, May–June 2009. *Euro Surveill* 14: pii: 19244. Available: <http://www.eurosurveillance.org/ViewArticle.aspx?ArticleId=19244>. Accessed 19 May 2011.
 - Poggensee G, Gilsdorf A, Buda S, Eckmanns T, Claus H, et al. (2010) The first wave of pandemic influenza (H1N1) 2009 in Germany: from initiation to acceleration. *BMC Infect Dis* 10: 155. doi:10.1186/1471-2334-1110-1155.
 - van 't Klooster T, Wielders C, Donker T, Isken L, Meijer A, et al. (2010) Surveillance of hospitalisations for 2009 pandemic influenza A(H1N1) in the Netherlands, 5 June–31 December 2009. *Euro Surveill* 15: pii: 19461.
 - Hahné S, Donker T, Meijer A, Timen A, van Steenberg J, et al. (2009) Epidemiology and control of influenza A(H1N1)v in the Netherlands: the first 115 cases. *Euro Surveill* 14: pii: 19267. Available: <http://www.eurosurveillance.org/ViewArticle.aspx?ArticleId=19267>. Accessed 19 May 2011.
 - Vriend HJ, Hahné SJM, Donker T, Meijer A, Timen A, et al. (2009) De nieuwe influenza A(H1N1)-epidemie in Nederland. *Epidemiologische gegevens over de periode 30 april–14 augustus 2009*. *Ned Tijdschr Geneesk* 153: A969.
 - van der Sande MAB, van der Hoek W, Hooiveld M, Donker GA, van Steenberg JE, et al. (2009) Bestrijding van de nieuwe influenza A (H1N1). II. Epidemiologie en niet-medicamenteuze maatregelen. *Ned Tijdschr Geneesk* 153: A771.
 - Dijkstra F, van 't Klooster TM, Brandsema P, van Gageldonk-Lafeber AB, Meijer A, et al. (2010) Jaarrapportage surveillance respiratoire infectieziekten 2009. Bilthoven: Rijksinstituut voor Volksgezondheid en Milieu, 2010. RIVM RIVM-briefrapportnummer: 210231006. Available: <http://www.rivm.nl/bibliotheek/rapporten/210231006.pdf>. Accessed 19 May 2011.
 - Institut de Veille Sanitaire (2009 December 16) Surveillance de la grippe A (H1N1) 2009 en France: outils et méthodes. Available: http://www.invs.sante.fr/surveillance/grippe_dossier/docs_professionnels/methodo_surveillance_grippe_161209.pdf. Accessed 19 May 2011.
 - Skarbinski J, Jain S, Bramley A, Lee EJ, Huang J, et al. (2011) Hospitalized patients with 2009 pandemic influenza A (H1N1) virus infection in the United States—September–October 2009. *Clin Infect Dis* 52(Suppl 1): S50–S59.
 - Jain S, Kamimoto L, Bramley AM, Schmitz AM, Benoit SR, et al. (2009) Hospitalized patients with 2009 H1N1 influenza in the United States, April–June 2009. *N Engl J Med* 361: 1935–1944.
 - UK Health Protection Agency (2010) Sources of UK flu data: influenza surveillance in the United Kingdom. Available: http://www.hpa.org.uk/web/HPAweb&HPAwebStandard/HPAweb_C/1195733821514?p=1191942171484. Accessed 19 May 2011.
 - Randrianasolo L, Raelina Y, Ratsitorahina M, Ravolomanana L, Andriamandimby S, et al. (2010) Sentinel surveillance system for early outbreak detection in Madagascar. *BMC Public Health* 10: 31.
 - Cutter J, Ang LW, Lai FY, Subramony H, Ma S, et al. (2010) Outbreak of pandemic influenza A (H1N1-2009) in Singapore, May to September 2009. *Ann Acad Med Singapore* 39: 273–282.
 - Sierra Moros MJ, Vázquez Torres M, Santa-Olalla Peralta P, Limia Sánchez A, Cortes García M, et al. (2010) Epidemiological surveillance activities during the 2009 influenza pandemic in Spain. Lessons learnt one year after. *Rev Esp Salud Publica* 84: 463–480.
 - Santa-Olalla Peralta P, Cortes-García M, Vicente-Herrero M, Castrillo-Villamandos C, Arias-Bohigas P, et al. (2010) Risk factors for disease severity among hospitalised patients with 2009 pandemic influenza A (H1N1) in Spain, April–December 2009. *Euro Surveill* 15: pii: 19667.
 - Santa-Olalla Peralta P, Cortes García M, Limia Sánchez A, Andrés Prado J, Pachón del Amo I, et al. (2010) Critically ill patients with 2009 pandemic influenza A (H1N1) infection in Spain: factors associated with death, April 2009–January 2010. *Rev Esp Salud Publica* 84: 547–568.
 - Baker MG, Wilson N, Huang QS, Paine S, Lopez L, et al. (2009) Pandemic influenza A(H1N1)v in New Zealand: the experience from April to August 2009. *Euro Surveill* 14: pii: 19319.
 - Huang QS, Bandaranayake D, Lopez LD, Pirie R, Peacey M, et al. (2009) Surveillance for the 2009 pandemic influenza A (H1N1) virus and seasonal influenza viruses - New Zealand, 2009. *MMWR Morb Mortal Wkly Rep* 58: 918–921.
 - Yu H, Liao Q, Yuan Y, Zhou L, Xiang N, et al. (2010) Effectiveness of oseltamivir on disease progression and viral RNA shedding in patients with mild pandemic 2009 influenza A H1N1: opportunistic retrospective study of medical charts in China. *BMJ* 341: c4779.
 - Yu H, Feng Z, Ujeki TM, Liao Q, Zhou L, et al. (2011) Risk factors for severe illness with 2009 pandemic influenza A(H1N1) virus infection in China. *Clin Infect Dis* 52: 457–465.
 - Campbell A, Rodin R, Kropp R, Mao Y, Hong Z, et al. (2010) Risk of severe outcomes among patients admitted to hospital with pandemic (H1N1) influenza. *CMAJ* 182: 349–355.
 - Hellerty M, Vachon J, Tarasuk J, Rodin R, Spika J, et al. (2011) Canadian pandemic H1N1 cases: a description of the changing epidemiology of hospitalizations and deaths in the first and second waves. *CMAJ*. In press.
 - Kong WM (2000) A review on the Hong Kong influenza surveillance system. *Public Health Epidemiology Bull* 9.
 - United Nations Population Division (2009) World population prospects: the 2008 revision population database. http://esa.un.org/unpd/wpp/unpp/panel_population.htm.
 - Higgins J, Thompson SG (2002) Quantifying heterogeneity in a meta-analysis. *Stat Med* 21: 1539–1558.
 - Simmonds MC, Higgins JP (2007) Covariate heterogeneity in meta-analysis: criteria for deciding between meta-regression and individual patient data. *Stat Med* 26: 2982–2999.
 - Pebody RG, McLean E, Zhao H, Cleary P, Bracebridge S, et al. (2010) Pandemic influenza A (H1N1) 2009 and mortality in the United Kingdom: risk factors for death, April 2009 to March 2010. *Euro Surveill* 15: pii: 19571.
 - Vaillant L, La Roche G, Tarantola A, Barboza P, epidemic intelligence team at InVS (2009) Epidemiology of fatal cases associated with pandemic H1N1 influenza 2009. *Euro Surveill* 14: pii: 19309.

55. Bettinger JA, Sauv e LJ, Scheifele DW, Moore D, Vaudry W, et al. (2010) Pandemic influenza in Canadian children: A summary of hospitalized pediatric cases. *Vaccine* 28: 3180–3184.
56. Lemaitre M, Carrat F (2010) Comparative age distribution of influenza morbidity and mortality during seasonal influenza epidemics and the 2009 H1N1 pandemic. *BMC Infect Dis* 10: 162.
57. Kamigaki T, Oshitani H (2009) Epidemiological characteristics and low case fatality rate of pandemic (H1N1) 2009 in Japan. *PLoS Curr* 1: RRN1139.
58. Hanslik T, Boelle P, Flahault A (2010) Preliminary estimation of risk factors for admission to intensive care units and for death in patients infected with A(H1N1)2009 influenza virus, France, 2009–2010. *PLoS Curr* 2: RRN1150.
59. Wu JT, Ma ES, Lee CK, Chu DK, Ho PL, et al. (2010) The infection attack rate and severity of 2009 pandemic H1N1 influenza in Hong Kong. *Clin Infect Dis* 51: 1184–1191.
60. Miller E, Hoschler K, Hardelid P, Stanford E, Andrews N, et al. (2010) Incidence of 2009 pandemic influenza A H1N1 infection in England: a cross-sectional serological study. *Lancet* 375: 1100–1108.
61. Presanis AM, De Angelis D, The New York City Swine Flu Investigation Team, Hagy A, Reed C, et al. (2009) The severity of pandemic H1N1 influenza in the United States, from April to July 2009: a Bayesian analysis. *PLoS Med* 6: e1000207. doi:10.1371/journal.pmed.1000207.
62. Watson L, Turk F, James P, Holgate ST (2007) Factors associated with mortality after an asthma admission: A national United Kingdom database analysis. *Respir Med* 101: 1659–1664.
63. Jamieson DJ, Honein MA, Rasmussen SA, Williams JL, Swerdlow DL, et al. (2009) H1N1 2009 influenza virus infection during pregnancy in the USA. *Lancet* 374: 451–458.
64. Kumar A, Zarychanski R, Pinto R, Cook DJ, Marshall J, et al. (2009) Critically ill patients with 2009 influenza A(H1N1) infection in Canada. *JAMA* 302: 1872–1879.
65. Creanga AA, Johnson TF, Graitcer SB, Hartman LK, Al-Samarrai T, et al. (2010) severity of 2009 pandemic influenza A (H1N1) virus infection in pregnant women. *Obstet Gynecol* 115: 717–726.
66. The ANZIC Influenza Investigators and Australasian Maternity Outcomes Surveillance System (2010) Critical illness due to 2009 A/H1N1 influenza in pregnant and postpartum women: population based cohort study. *BMJ* 340: c1279. doi:1210.1136/bmj.c1279.
67. Archer B, Cohen C, Naidoo D, Thomas J, Makunga C, et al. (2009) Interim report on pandemic H1N1 influenza virus infections in South Africa, April to October 2009: epidemiology and factors associated with fatal cases. *Euro Surveill* 14: pii: 19369.
68. Siston AM, Rasmussen SA, Honein MA, Fry AM, Seib K, et al. (2010) Pandemic 2009 influenza A(H1N1) virus illness among pregnant women in the United States. *JAMA* 303: 1517–1525.
69. Jamieson D, Theiler R, Rasmussen S (2006) Emerging infections and pregnancy. *Emerg Infect Dis* 12: 1638–1643.
70. Goodnight W, Soper D (2005) Pneumonia in pregnancy. *Crit Care Med* 33: S390–S397.
71. Centers for Disease Control and Prevention (2009) Intensive-care patients with severe novel influenza A (H1N1) virus infection—Michigan, June 2009. *MMWR Morb Mortal Weekly Rep* 58: 749–752.
72. Dominguez-Cherit G, Lapinsky SE, Macias AE, Pinto R, Espinosa-Perez L, et al. (2009) Critically ill patients with 2009 influenza A(H1N1) in Mexico. *JAMA* 302: 1880–1887.
73. Rello J, Rodr guez A, Iba ez P, Socias L, Cebrian J, et al. (2009) Intensive care adult patients with severe respiratory failure caused by Influenza A (H1N1)v in Spain. *Crit Care* 13: R148.
74. Rodr guez A, Socias L, Guerrero J, Figueira J, Gonz lez N, et al. (2010) Gripe A pand mica en una unidad de cuidados intensivos: experiencia en Espa a y Latinoam rica (Grupo Espa ol de Trabajo de Gripe A Grave/Sociedad Espa ola de Medicina Intensiva, Cr tica y Unidades Coronarias). *Med Intensiva* 34: 87–94.
75. Centers for Disease Control and Prevention (2009) Patients hospitalized with 2009 pandemic influenza A (H1N1)—New York City, May 2009. *MMWR Morb Mortal Weekly Rep* 58: 1436–1440.
76. Plessa E, Diakakis P, Gardelis J, Thirios A, Koletsi P, et al. (2010) Clinical features, risk factors, and complications among pediatric patients with pandemic influenza A (H1N1). *Clin Pediatr (Phila)* 49: 777–781.
77. Morgan O, Bramley A, Fowlkes A, Freedman D, Taylor TH, et al. (2010) Morbid obesity as a risk factor for hospitalization and death due to 2009 pandemic influenza A(H1N1) disease. *PLoS ONE* 5: e9694. doi:10.1371/journal.pone.0009694.
78. Arizona Department of Health Services (2010) Arizona—Supplemental influenza summary MMWR Week 9 (2/28/10–3/6/10). Phoenix (Arizona): Arizona Department of Health Services.
79. Funda o Nacional de Sa de (2009) Sa de ind gena—informe t cnico sobre influenza A H1N1. Influenza A (H1N1) em popula es ind genas do Brasil. Informe T cnico n 06/2009. Available: http://www.funasa.gov.br/internet/desai/arquivos/informeTecnicoInfluenzaA_6.pdf. Accessed 30 May 2011.
80. La Roche G, Tarantola A, Barboza P, Vaillant L, Gueguen J, et al. (2009) The 2009 pandemic H1N1 influenza and indigenous populations of the Americas and the Pacific. *Euro Surveill* 14: pii: 19366.
81. Australian Government Department of Health and Aging (2010) Australian influenza surveillance report no. 8, 2010. Available: [http://www.healthemergency.gov.au/internet/healthemergency/publishing.nsf/Content/EB136394E79CA5E2CA2576A50010783A/\\$File/ozflu-no8-2010.pdf](http://www.healthemergency.gov.au/internet/healthemergency/publishing.nsf/Content/EB136394E79CA5E2CA2576A50010783A/$File/ozflu-no8-2010.pdf). Accessed 19 May 2011.
82. Webb SA, Pettila V, Seppelt I, Bellomo R, Bailey M, et al. (2009) Critical care services and 2009 H1N1 influenza in Australia and New Zealand. *N Engl J Med* 361: 1925–1934.
83. Wilson N, Baker M (2008) Ninety years on: what we still need to learn from “Black November” 1918 about pandemic influenza. *N Z Med J* 121: 136–138.
84. Groom AV, Jim C, Laroque M, Mason C, McLaughlin J, et al. (2009) Pandemic influenza preparedness and vulnerable populations in tribal communities. *Am J Public Health* 99(Suppl 2): S271–S278.
85. Johnson NP, Mueller J (2002) Updating the accounts: global mortality of the 1918–1920 “Spanish” influenza pandemic. *Bull Hist Med* 76: 105–115.
86. Subramony H, Lai FY, Ang LW, Cutter J, Lim PL, et al. (2010) An epidemiological study of 1348 cases of pandemic H1N1 influenza admitted to Singapore hospitals from July to September 2009. *Ann Acad Med Singapore* 39: 283–290.

Editors' Summary

Background. In April 2009, a new strain of influenza A H1N1 was first identified in Mexico and the United States and subsequently spread around the world. In June 2009, the World Health Organization (WHO) declared a pandemic alert phase 6, which continued until August 2010. Throughout the pandemic, WHO and member states gathered information to characterize the patterns of risk associated with the new influenza A H1N1 virus infection and to assess the clinical picture. Although risk factors for severe disease following seasonal influenza infection have been well documented in many countries (for example, pregnancy; chronic medical conditions such as pulmonary, cardiovascular, renal, hepatic, neuromuscular, hematologic, and metabolic disorders; some cognitive conditions; and immunodeficiency), risk factors for severe disease following infection early in the 2009 H1N1 pandemic were largely unknown.

Why Was This Study Done? Many countries have recently reported data on the association between severe H1N1 influenza and a variety of underlying risk factors, but because these data are presented in different formats, making direct comparisons across countries is difficult, with no clear consensus for some conditions. Therefore, to assess the frequency and distribution of known and new potential risk factors for severe H1N1 infection, this study was conducted to collect data (from 1 April 2009 to 1 January 2010) from surveillance programs of the Ministries of Health or National Public Health Institutes in 19 countries: Argentina, Australia, Canada, Chile, China, France, Germany, Hong Kong (special administrative region), Japan, Madagascar, Mexico, the Netherlands, New Zealand, Singapore, South Africa, Spain, Thailand, the United States, and the United Kingdom.

What Did the Researchers Do and Find? As part of routine surveillance, countries were asked to provide risk factor data on laboratory-confirmed H1N1 in patients who were admitted to hospital, admitted to the intensive care unit (ICU), or had died because of their infection, using a standardized format. The researchers grouped potential risk conditions into four categories: age, chronic medical illnesses, pregnancy (by trimester), and other conditions that were not previously considered as risk conditions for severe influenza outcomes, such as obesity. For each risk factor (except pregnancy), the researchers calculated the percentage of each group of patients using the total number of cases reported in each severity category (hospitalization, admission to ICU, and death). To evaluate the risk associated with pregnancy, the researchers used the ratio of pregnant women to all women of childbearing age (age 15–49 years)

at each level of severity to describe the differences between levels.

The researchers were able to collect data on approximately 70,000 patients requiring hospitalization, 9,700 patients admitted to the ICU, and 2,500 patients who died from H1N1 infection. The proportion of patients with H1N1 with one or more reported chronic conditions increased with severity—the median was 31.1% of hospitalized patients, 52.3% of patients admitted to the ICU, and 61.8% of patients who died. For all levels of severity, pregnant women in their third trimester consistently accounted for the majority of the total of pregnant women. The proportion of patients with obesity increased with increasing disease severity—median of 6% of hospitalized patients, 11.3% of patients admitted to the ICU, and 12.0% of all deaths from H1N1.

What Do These Findings Mean? These findings show that risk factors for severe H1N1 infection are similar to those for seasonal influenza, with some notable differences: a substantial proportion of people with severe and fatal cases of H1N1 had pre-existing chronic illness, which indicates that the presence of chronic illness increases the likelihood of death. Cardiac disease, chronic respiratory disease, and diabetes are important risk factors for severe disease that will be especially relevant for countries with high rates of these illnesses. Approximately 2/3 of hospitalized people and 40% of people who died from H1N1 infection did not have any identified pre-existing chronic illness, but this study was not able to comprehensively assess how many of these cases had other risk factors, such as pregnancy, obesity, smoking, and alcohol misuse. Because of large differences between countries, the role of risk factors such as obesity and pregnancy need further study—although there is sufficient evidence to support vaccination and early intervention for pregnant women. Overall, the findings of this study reinforce the need to identify and target high-risk groups for interventions such as immunization, early medical advice, and use of antiviral medications.

Additional Information. Please access these Web sites via the online version of this summary at <http://dx.doi.org/10.1371/journal.pmed.1001053>.

- WHO provides a Global Alert and Response (GAR) with updates on a number of influenza-related topics
- The US Centers for Disease Control and Prevention provides information on risk factors and H1N1