

RADAR

Research Archive and Digital Asset Repository

OXFORD
BROOKES
UNIVERSITY

Alvarez, MPB., Silva, TDD., Favero, FM., Valenti, VE., Raimundo, RD., Vanderlei, LCM., Garner, DM. and Monteiro, CBM. (2017) 'Autonomic Modulation in Duchenne Muscular Dystrophy during a Computer Task: A Prospective Control Trial', *PLoS ONE*, 12 (1):e0169633

DOI: <https://doi.org/10.1371/journal.pone.0169633>

This document is the Version of Record.

License: <https://creativecommons.org/licenses/by/4.0>

Available from RADAR: <https://radar.brookes.ac.uk/radar/items/43fc5b2a-3a87-4020-9774-26655d92019a/1/>

Copyright © and Moral Rights are retained by the author(s) and/ or other copyright owners unless otherwise waved in a license stated or linked to above. A copy can be downloaded for personal non-commercial research or study, without prior permission or charge. This item cannot be reproduced or quoted extensively from without first obtaining permission in writing from the copyright holder(s). The content must not be changed in any way or sold commercially in any format or medium without the formal permission of the copyright holders.

RESEARCH ARTICLE

Autonomic Modulation in Duchenne Muscular Dystrophy during a Computer Task: A Prospective Control Trial

Mayra Priscila Boscolo Alvarez¹, Talita Dias da Silva², Francis Meire Favero^{3*}, Vitor Engrácia Valenti⁴, Rodrigo Daminello Raimundo⁵, Luiz Carlos Marques Vanderlei⁶, David M. Garner⁷, Carlos Bandeira de Mello Monteiro^{1,8}

1 Physical Therapy, Speech and Occupational Therapy Department, School of Medicine, University of São Paulo, São Paulo, SP, Brazil, **2** Federal University of São Paulo, Paulista School of Medicine, São Paulo, SP, Brazil, **3** Federal University of São Paulo, Department of Neurology/Neurosurgery, Paulista School of Medicine, São Paulo, SP, Brazil, **4** Autonomic Nervous System Center Study, Speech Therapy Department Faculty of Sciences, Paulista State University (UNESP), Marília, SP, Brazil, **5** Laboratory Design and Scientific Writing, Department of Community Health, ABC Medical School, Santo André, SP, Brazil, **6** Department of Physiotherapy, Paulista State University (UNESP), Presidente Prudente, São Paulo, SP, Brazil, **7** Cardiorespiratory Research Group, Department of Biological and Medical Sciences, Faculty of Health and Life Sciences, Oxford Brookes University, Gypsy Lane, Oxford OX3 0BP, United Kingdom, **8** School of Arts, Sciences and Humanities, University of São Paulo, São Paulo, SP, Brazil

* ffave.nexp@latoneuro.com.br



OPEN ACCESS

Citation: Alvarez MPB, Silva TDd, Favero FM, Valenti VE, Raimundo RD, Vanderlei LCM, et al. (2017) Autonomic Modulation in Duchenne Muscular Dystrophy during a Computer Task: A Prospective Control Trial. PLoS ONE 12(1): e0169633. doi:10.1371/journal.pone.0169633

Editor: Carlos E. Ambrósio, Faculty of Animal Sciences and Food Engineering, University of São Paulo, BRAZIL

Received: March 8, 2016

Accepted: December 20, 2016

Published: January 24, 2017

Copyright: © 2017 Alvarez et al. This is an open access article distributed under the terms of the [Creative Commons Attribution License](https://creativecommons.org/licenses/by/4.0/), which permits unrestricted use, distribution, and reproduction in any medium, provided the original author and source are credited.

Data Availability Statement: All relevant data are within the paper and its Supporting Information file.

Funding: The authors received financial support from the FAPESP (Fundação de Amparo à Pesquisa do Estado de São Paulo, process number 2012/16970-6).

Competing Interests: The authors have declared that no competing interests exist.

Abstract

Introduction

Duchenne Muscular Dystrophy (DMD) is characterized by progressive muscle weakness that can lead to disability. Owing to functional difficulties faced by individuals with DMD, the use of assistive technology is essential to provide or facilitate functional abilities. In DMD, cardiac autonomic dysfunction has been reported in addition to musculoskeletal impairment. Consequently, the objective was to investigate acute cardiac autonomic responses, by Heart Rate Variability (HRV), during computer tasks in subjects with DMD.

Method

HRV was assessed by linear and nonlinear methods, using the heart rate monitor Polar RS800CX chest strap Electrocardiographic measuring device. Then, 45 subjects were included in the group with DMD and 45 in the healthy Typical Development (TD) control group. They were assessed for twenty minutes at rest sitting, and five minutes after undergoing a task on the computer.

Results

Individuals with DMD had a statistically significant lower parasympathetic cardiac modulation at rest when compared to the control group, which further declined when undergoing the tasks on the computer.

Conclusion

DMD patients presented decreased HRV and exhibited greater intensity of cardiac autonomic responses during computer tasks characterized by vagal withdrawal when compared to the healthy TD control subjects.

Introduction

Muscular dystrophies consist of a group of genetic disorders characterized by muscle weakness and atrophy [1, 2], particularly of early onset and of a progressive nature [3, 4].

Amongst all types of the muscular dystrophies, Duchenne Muscular Dystrophy (DMD) is considered the most widespread [5], with recessive genetic inheritance [3], and affecting approximately 1:3500 male births [6]. DMD occurs by a mutation of the gene encoding the dystrophin enzyme which is located on the short arm of the X chromosome [7] in the Xp21 region [1, 8]. DMD is categorized by the progressive loss of movement, which initially affects the lower limbs and then the upper limbs, with pseudo-hypertrophy of the affected muscles, interstitial increase of connective tissue and in the advanced stages significant increase of fat tissue in the muscles [9, 10].

On account of the functional difficulties presented by individuals with DMD; to enable the capability in social activities and performance; the practice of assistive technology or resources are needed. They achieve functional abilities of individuals with disabilities and thus promote greater independence and social inclusion [11]. According to Neistadt and Crepeau [12], assistive technology can be defined as any item or product, equipped for use, adapted or customized, that maintains or improves functional capabilities of individuals with a disability.

Recently the advances in computational assistive technology and the provision of rehabilitation programs using computer equipment during treatment allow the patient with DMD to undertake tasks in challenging situations by means of simple technology and achieving rapid responses. Additionally, it is possible to provide interactions with targets, through logical cognition and different reaction times associated with movement, allowing the repetition of muscle contractions and enhancing performance [13–20].

Moreover, the researched deficiencies in the musculoskeletal system [5] and cardiac autonomic dysfunction have been previously well researched in DMD [21, 22].

Thus, amongst the techniques applied to analyze the ANS, Heart Rate Variability (HRV) has emerged as a simple, reliable, inexpensive and non-invasive measure of the autonomic impulses. It represents one of the most promising quantitative markers of autonomic balance [23].

The wide use and cost-effectiveness of the technique and ease of data acquisition make HRV a capable choice for the interpretation of ANS functioning and a promising clinical tool to assess and identify physiological deficiencies [23]. Fluctuations in HRV patterns provide an early and sensitive diagnosis of the physiological behavior of the human body and health status of the individual [24].

Likewise, Thomas et al. [21] studied heart rate autonomic dysfunction in DMD. These authors assessed HRV in DMD and in a healthy control group by 24-hour Holter monitoring. They found that the control group demonstrated a higher maximum heart rate on Holter monitoring than in DMD patients. Dittrich et al. [22] assessed cardiac autonomic regulation in DMD, and the analytical value of the diagnostic procedures in clinical settings. Both of the abovementioned studies investigated the cardiac autonomic dysfunction in DMD.

Consequently, the autonomic impairment is recognized for patients with DMD at rest. However, the effect of the computational task is not fully understood. At present, computer tasks are required for the groups independence and has been widely adopted in persons with DMD. It is especially important when assessing the influences on the autonomic system.

Whilst recent literature has revealed lesser HRV in DMD [21, 22], the specific cardiac autonomic response of this population is unclear when undergoing stimulation through computer tasks. There is little research on virtual technology procedures in DMD. Despite the use of computers in rehabilitation, we did not find any published research on the physiological changes that these tasks cause in individuals with DMD. To enable an understanding of these problems, this study evaluated these physiological adaptations by assessing the Autonomic Nervous System (ANS). Therefore, we aimed to investigate acute cardiac autonomic responses during computer tasks in individuals with DMD versus healthy people. If the HRV responses of DMD patients during computer tasks are improved comparing with the responses at rest, it provides new pathways for research using computational tasks that may be therapeutic by improving autonomic dysfunction in this group of subjects.

Materials and Methods

Participants

This is a prospective controlled trial. In this study were 90 age matched male subjects divided into equal groups with diagnosis of DMD and those healthy Typically Developed (TD) individuals without DMD. All individuals diagnosed with DMD were confirmed by molecular methods and/or protein expression in skeletal muscle.

Subjects were excluded with severely dilated myocardium, other associated diseases and individuals with changes in cognitive functions that would impede the simple cognition of commands in the proposed activities.

The research project (number 236/13) was approved by the research ethics committee of the University of São Paulo and undertaken after the signing of the Terms of Free and Informed Consent by the participants or legal guardian. Research participants aged 17 years or younger also submitted the research consent form.

To achieve the characterization of individuals with DMD, the Vignos scale was enforced [25]. This characterizes the disease severity according to pathological progression. They were classified from patient at stage 1 (walk and climb stairs without assistance) to 10 (permanently confined to bed).

Data collection instruments

Data collection forms from the medical records were completed in individuals with DMD. It was used to obtain relevant information regarding patients' care, such as associated diseases and usage of medications.

A Premium Aneroid Sphygmomanometer (Model S82, Prestige Medical, Northridge, California, USA) and a BIC stethoscope (CBEMED, Itupeva, Brazil) were required to undertake systolic blood pressure (SBP) and diastolic blood pressure (DBP) measurements. Starting and final heart rate (HR) was verified by the investigator through their radial pulse and beats calculated for one minute.

HRV was recorded using the Polar RS800CX chest strap ECG measuring device (Polar Electro Oy, Kempele, Finland) previously validated to capture beat-to-beat HR (RR intervals), that represents the interval between each beat) [24].

Collection procedures

SBP, DBP and HR measurements were assessed and recorded following the first minute of sitting and at the conclusion of twenty minutes of rest; then, before the start and at the end of the five minutes of the computer task.

Following the initial assessment, the capture strap was placed on the chest of volunteers and the HR receptor was placed on the wrist.

After strap placement and the computer screen startup, the individuals from both groups remained at rest and sitting in a chair (walkers, TD- and DMD-group) or in their own wheelchair (non-walkers, DMD-group), with spontaneous breathing for twenty minutes. Following this period, the computer screen was restarted, and the individuals remained seated with a notebook computer to enable them to perform a maze task on the computer for five minutes.

HRV was analyzed during two time periods: the period before (20 minutes) and then during the cognitive computer task (5 minutes).

The computer task undertaken was a maze paradigm used for its cognitive requirements with ease and adaptability for use in individuals with DMD. To complete the tasks, the researchers selected a computer program developed by the Department of Mathematics of the Federal University of Rio Grande do Sul, presented by Souza et al. [26]. The task comprised of different maze designs, which had one correct pathway that could be negotiated. Fig 1 illustrates the experimental tasks.

The participants were evaluated individually in an appropriate room with a notebook computer, desk, chair (Fig 1) and the participation of an evaluator responsible for instruction and annotation of data collected.

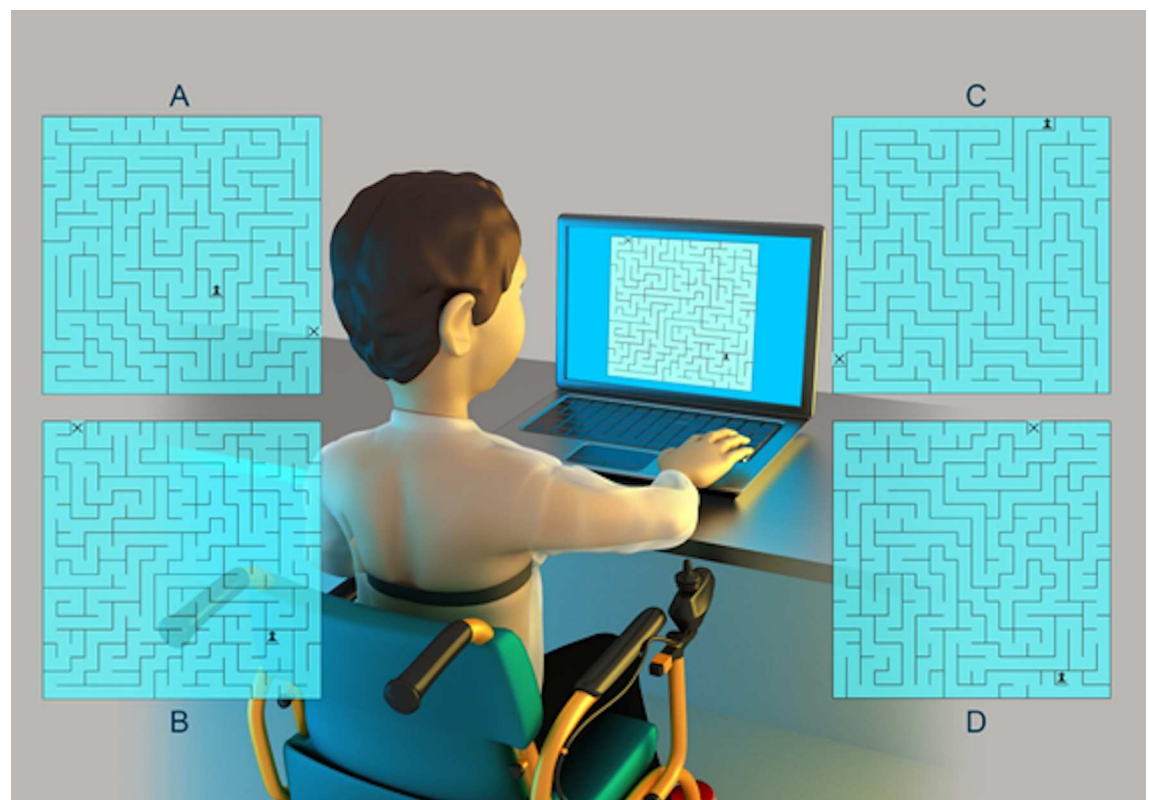


Fig 1. Example of Individual positioning during the maze task with the capture strap on the chest and mazes models used.

doi:10.1371/journal.pone.0169633.g001

Each individual was well positioned and the task was elucidated concurrently with the presentation of the maze, along which the individual should devise the path with the digital chess piece (pawn) character (pointed to, on the screen, by the evaluator) until the exit of the maze identified by an "x" (pointed to, on the screen, by the evaluator). The individual was instructed to perform the task as quickly as possible using the arrow buttons on the keyboard identified by arrows up, down, right and left.

A 20-by-20 cm maze was presented while the individuals undertook the task as many times as necessary to remain active at the computer for five minutes.

Data analysis

The dependent variables (HRV indexes) were submitted to a 2 (group: DMD, TD) by 2 (Task: Rest, Computer) ANOVA with repeated measures on the last factor for each HRV index. Post-hoc comparisons were undertaken by Tukey-HSD (Honest Significant Difference) test ($p < 0.05$). For the physiologically independent variables such as Systolic Blood Pressure, Diastolic Blood Pressure and Heart Rate, the comparisons were made by using Student t test for unpaired data. The software package operated was SPSS, 20.0 (Chicago, Illinois, USA).

HRV analysis

HRV analysis was completed under guidelines from the Task Force of the European Society of Cardiology and North American Society of Pacing and Electrophysiology [27]. The RR intervals were recorded using the portable Polar RS800CX heart rate (HR) monitor (Polar Electro, Finland) with a sampling rate of 1 kHz. They were downloaded to the Polar Precision Performance program (v.3.0). The software enabled the visualization of HR and the extraction of a cardiac period (RR interval; the variation of beat-to-beat separations) file in "txt" format. For analysis of HRV data in the sitting position, we analyzed 1000 consecutive RR intervals, and for HRV analysis for the computational task, the greatest number of consecutive RR intervals obtained was used, but with a minimum number of 256 RR intervals. Digital filtering complemented by manual filtering was performed to eliminate artifacts and only series with more than 95% of sinus beats were included in the study [28].

HRV analysis was assessed by linear methods, in the time (Dt) and frequency (Df) domains, and then by nonlinear methods (Poincaré plot). We chose to use linear and nonlinear methods, considering that both are shown to be complementary to each other, providing additional information [29].

Linear methods

Time domain. In the Time domain Dt, the time interval between successive heart beat intervals, was determined by statistical and geometric methods [27].

The necessary statistical methods to assess ANS were SDNN (index of standard deviation of all normal-to-normal RR intervals), rMSSD (root mean square of successive differences between adjacent normal RR intervals), pNN50 (percentage of adjacent RR intervals with a difference longer than 50 milliseconds) [27].

For geometrical methods we enforced RR Tri (Total number of all NN intervals divided by the height of the histogram of all NN intervals) and TINN (baseline width of the minimum square difference triangular interpolation of the highest peak of the histogram of all NN intervals) [27].

Frequency Domain. For HRV analysis in Frequency domain, Df, low frequency (LF) and high frequency (HF) spectral components were appointed in absolute values of power (ms^2) or

in normalized units (n.u.). The ratio between these components in absolute values (LF/HF) represents the relative value of each spectral component in relation to the total potential minus the very low frequency (VLF) components [27].

The index Total (or Total Power) is the variance of NN intervals over the approximate temporal segment [27].

Nonlinear methods

For HRV analysis by nonlinear methods, we applied the Poincaré plot (SD1 components—standard deviation of instantaneous beat-to-beat variability, SD2—standard deviation of long-term continuous RR intervals and relation SD1/SD2) [27].

The Poincaré plot enables each RR interval to be plotted against the next interval. For quantitative analysis of the plot, the indices for SD1, SD2 and the relation SD1/SD2 were calculated [30]. According to Hoshi et al., [31] “the Poincaré plot for heart rate variability analysis is a technique considered geometrical and non-linear, that can be used to assess the dynamics of heart rate variability by a representation of the values of each pair of R–R intervals into a simplified phase space that describes the system’s evolution.”

For more information regarding the HRV indexes, see [S1 File](#) in the Supporting Information.

Results

The age, anthropometric variables and medications taken by DMD group are stated in [Table 1](#).

Individuals with DMD were classified by Vignos Scale, as described in [Table 2](#).

Heart rate variability

Time domain. For statistical methods, concerning the mean RR interval there was no effect of the computer Task. However, there was an interaction between Task and Group ($F_{1,88} = 4.44, p = 0.038, \eta^2 = 0.05$). The post-hoc test illustrated that there was difference between tasks just for TD group ($p = 0.009$) ([Table 3](#)). There was a main effect for Group ($F_{1,88} = 24.5, p < 0.001, \eta^2 = 0.22$). This implied that the TD group mean RR interval was higher than in the DMD group.

Table 1. Age, anthropometric variables within the groups (by mean ± standard deviation) and the cardiac medication for DMD-group.

| Variable | TD-group | DMD-group | p |
|--------------------------------|-------------------------------|--------------|--------|
| Age (years) | 15.4 ± 2.8 | 15.4 ± 2.9 | 0.455 |
| Height (m) | 1.68 ± 0.12 | 1.56 ± 0.17 | <0.001 |
| Mass (kg) | 63.2 ± 15.5 | 55.84 ± 17.9 | 0.013 |
| BMI (kg/m ²) | 20.04 ± 3.72 | 22.42 ± 4.71 | 0.331 |
| Medication on DMD-group | Number of patients (%) | | |
| Beta-blockers | 13 (28.89) | | |
| ACE-inhibitor | 5 (11.11) | | |
| Beta-blockers + ACE-inhibitors | 20 (44.44) | | |
| No medication | 7 (15.56) | | |

TD: Typical Development; DMD: Duchenne Muscular Dystrophy; BMI: body mass index; m: meters; kg: kilograms; kg/m²: kilograms per square meter; ACE-inhibitors: angiotensin-converting enzyme inhibitors.

doi:10.1371/journal.pone.0169633.t001

Table 2. Description individuals with DMD by Vignos Scale.

| Vignos scale | | Number of patients |
|--------------|-----------------------------------------------------------------------------------------------------|--------------------|
| 1 | Walks and climbs stairs without assistance. | 4 |
| 2 | Walks and climbs stairs with aid of railing. | 4 |
| 3 | Walks and climbs stairs slowly with aid of railing (more than 25 seconds for eight standard steps). | 1 |
| 4 | Walks unassisted and rises from chair; cannot climb stairs. | 1 |
| 5 | Walks unassisted; cannot rise from chair; cannot climb stairs. | 0 |
| 6 | Walks only with assistance or walks independently with leg braces. | 0 |
| 7 | Walks in leg braces, but requires assistance for balance. | 19 |
| 8 | Maintains standing with leg braces, but is unable to walk even with assistance. | 14 |
| 9 | In wheelchair. | 2 |
| 10 | Confined to bed. | 0 |

doi:10.1371/journal.pone.0169633.t002

Regarding SDNN there was an effect for Task ($F_{1,88} = 51.3, p < 0.001, \eta^2 = 0.37$), but no interaction between Task and Group. A Main effect for Group ($F_{1,88} = 21.9, p < 0.001, \eta^2 = 0.20$) was found. In the TD group the SDNN was higher than in the DMD group.

With respect to rMSSD, similarly to SDNN, there was an effect for Task ($F_{1,88} = 5.11, p = 0.026, \eta^2 = 0.06$), but no interaction between Task and Group. A Main effect for Group ($F_{1,88} = 12.2, p = 0.001, \eta^2 = 0.12$) remained. In the TD group, the rMSSD was higher than in the DMD group.

For pNN50 there was no effect for Task. Yet, there was an interaction between Task and Group ($F_{1,88} = 5.44, p = 0.022, \eta^2 = 0.06$). The post-hoc test exhibited that there was difference between tasks, but only for the DMD group ($p = 0.047$). Additionally, there was a main effect for Group ($F_{1,88} = 13.5, p < 0.001, \eta^2 = 0.13$). We observed that the TD group pNN50 was greater than in the DMD group.

In the geometrical methods, for RR Triangular Index there was an effect for Task ($F_{1,88} = 77.2, p < 0.001, \eta^2 = 0.47$), but no interaction between Task and Group (see values in Table 3). A Main effect for Group ($F_{1,88} = 20.2, p < 0.001, \eta^2 = 0.19$) was found. In the TD group the RR Triangular Index was higher than in the DMD group (Table 3).

Table 3. Time domain indices of HRV at rest seated and during cognitive task in the TD and DMD groups.

| Index | TD | | DMD | |
|---------------------|-----------------|-----------------|-----------------|----------------|
| | Rest seated | Cognitive task | Rest seated | Cognitive task |
| Statistical methods | | | | |
| Mean RR (ms) | 757.3 ± 88.6* | 779.13 ± 105.7* | 675.06 ± 90.99 | 672.40 ± 91.72 |
| SDNN (ms) | 79.41 ± 33.41* | 63.47 ± 34.70* | 54.40 ± 25.06* | 36.72 ± 16.94* |
| RMSSD (ms) | 53.55 ± 29.49* | 52.23 ± 32.48* | 37.21 ± 20.98* | 31.23 ± 20.36* |
| pNN50 (%) | 25.48 ± 16.27 | 27.79 ± 21.16 | 15.82 ± 15.89* | 12.35 ± 14.65* |
| Geometrical methods | | | | |
| RR Tri | 19.38 ± 8.05 | 14.22 ± 4.61 | 14.20 ± 6.32 | 9.51 ± 3.29 |
| TINN (ms) | 355.67 ± 143.14 | 255.56 ± 89.69 | 262.89 ± 113.61 | 165.44 ± 67.86 |

TD: Typical Development; DMD: Duchenne Muscular Dystrophy. SDNN: standard deviation of normal-to-normal RR intervals; pNN50: the percentage of adjacent RR intervals with a difference of duration greater than 50 ms; RMSSD: root-mean square of differences between adjacent normal RR intervals in a time interval; RR Tri: triangular index; TINN: triangular interpolation of RR intervals; ms: milliseconds.

* $p < 0.05$ cognitive task vs rest seated in each group. There was significant difference between groups for all time domain indexes.

doi:10.1371/journal.pone.0169633.t003

Table 4. Frequency domain indices of HRV at rest seated and during cognitive task in the TD and DMD groups.

| Index | TD | | DMD | |
|--------------------------|-------------------|-------------------|-------------------|-------------------|
| | Rest seated | Cognitive task | Rest seated | Cognitive task |
| LF (ms ²) | 2039.69 ± 1288.77 | 1184.84 ± 1314.29 | 1191.11 ± 1148.62 | 510.47 ± 625.12 |
| LF (n.u.) | 65.97 ± 14.82 | 58.04 ± 17.53 | 65.44 ± 11.63 | 58.35 ± 16.89 |
| HF (ms ²) | 1316.04 ± 1552.74 | 1150.36 ± 1607.58 | 702.18 ± 704.87 | 472.31 ± 703.89 |
| HF (n.u.) | 34.03 ± 14.82 | 41.96 ± 17.53 | 34.56 ± 11.64 | 41.65 ± 16.89 |
| Total (ms ²) | 6652.91 ± 6214.01 | 4236.51 ± 5617.50 | 3111.96 ± 2785.06 | 1412.47 ± 1554.07 |
| LF/HF (ms ²) | 2.73 ± 2.43 | 2.31 ± 3.32 | 2.26 ± 1.18 | 1.87 ± 1.27 |

TD: Typical Development; DMD: Duchenne Muscular Dystrophy. LF: low frequency; HF: high frequency; LF/HF: low frequency/ high frequency ratio; ms: milliseconds; ms²: milliseconds squared; n.u.: normalized units.

There was significant difference between cognitive task vs rest seated in both groups for all frequency domain indexes. For LF, HF and LF/HF there was no significant difference between groups.

doi:10.1371/journal.pone.0169633.t004

Similarly, for TINN there was an effect for Task ($F_{1,88} = 56.4, p < 0.001, \eta^2 = 0.39$), but no interaction between Task and Group. A Main effect for Group ($F_{1,88} = 24.7, p < 0.001, \eta^2 = 0.22$) was found. In the TD group the TINN was higher than in the DMD group.

Frequency domain. Regarding the LF (ms²) there was an effect for Task ($F_{1,88} = 55.0, p < 0.001, \eta^2 = 0.39$), but no interaction between Task and Group (see values in Table 4). A Main effect for Group ($F_{1,88} = 12.6, p = 0.001, \eta^2 = 0.13$) was found. In the TD group the LF (ms²) was higher than in the DMD group (Table 4).

Regarding the LF (normalized units), there was an effect for Task ($F_{1,88} = 26.2, p < 0.001, \eta^2 = 0.23$), but no interaction between Task and Group. There was no Main effect for Group.

With respect to the HF (ms²), similarly to LF (ms²) there was an effect for Task ($F_{1,88} = 7.29, p = 0.008, \eta^2 = 0.08$), but no interaction between Task and Group. A Main effect for Group ($F_{1,88} = 12.6, p = 0.001, \eta^2 = 0.13$) was found. In the TD group the HF (ms²) was higher than in the DMD group.

In relation to the HF (normalized units), there was an effect for Task ($F_{1,88} = 26.2, p < 0.001, \eta^2 = 0.23$), but no interaction between Task and Group. There was no Main effect for Group.

For Total power there was an effect for Task ($F_{1,88} = 24.9, p < 0.001, \eta^2 = 0.22$), but no interaction between Task and Group. A Main effect for Group ($F_{1,88} = 14.0, p < 0.001, \eta^2 = 0.14$) was found. In the TD group the Total was higher than in the DMD group.

When we assess the LF/HF, there was an effect for Task ($F_{1,88} = 4.10, p = 0.046, \eta^2 = 0.04$), but no interaction between Task and Group. There was no Main effect for Group.

Nonlinear methods. Concerning the SD1 there was an effect for Task ($F_{1,88} = 5.24, p = 0.025, \eta^2 = 0.06$), but no interaction between Task and Group. A Main effect for Group ($F_{1,88} = 12.2, p = 0.001, \eta^2 = 0.12$) was found. In the TD group the SD1 was higher than in the DMD group (Table 5).

Regarding the SD2 there was an effect for Task ($F_{1,88} = 54.1, p < 0.001, \eta^2 = 0.38$), but no interaction between Task and Group. A Main effect for Group ($F_{1,88} = 23.4, p < 0.001, \eta^2 = 0.21$) remained. In the TD group the SD2 was higher than in the DMD group.

With respect to the SD1/SD2 ratio, there was an effect for Task ($F_{1,88} = 19.8, p < 0.001, \eta^2 = 0.18$), but no interaction between Task and Group. There was no Main effect for Group. Fig 2 represents the visual pattern of the Poincaré plot observed in one subject from each group, before and after cognitive task.

Table 5. Mean and standard deviation from nonlinear indices in both groups.

| Index | TD | | DMD | |
|--------------|----------------|----------------|---------------|----------------|
| | Rest seated | Cognitive task | Rest seated | Cognitive task |
| SD1 (ms) | 37.88 ± 20.85 | 36.98 ± 23.01 | 26.33 ± 14.84 | 22.11 ± 14.41 |
| SD2 (ms) | 105.21 ± 43.69 | 80.73 ± 45.27 | 71.99 ± 32.86 | 46.46 ± 20.24 |
| SD1/SD2 (ms) | 0.35 ± 0.11 | 0.46 ± 0.18 | 0.36 ± 0.10 | 0.45 ± 0.16 |

TD: Typical Development; DMD: Duchenne Muscular Dystrophy; SD1: standard deviation of instantaneous beat-to-beat variability; SD2: standard deviation of long-term continuous RR intervals; ms: milliseconds.

There was significant difference between cognitive task vs rest seated in both groups for all frequency domain indexes. For SD1/SD2 there was no significant difference between groups.

doi:10.1371/journal.pone.0169633.t005

Table 6 illustrates HR, SBP and DBP values for the start and completion of the cognitive task. We observed no significant responses for those variables during the cognitive computer task.

Discussion

We evaluated HRV responses induced by a computer task in DMD patients. As expected we discovered significant basal HRV differences between the groups, indicating that DMD causes a decreased HRV. We also obtained a statistically significant greater intensity of responses in the DMD group compared to the control group, since parasympathetic withdrawal during the task achieved higher responses in the DMD patients.

The ANS consists of two components, sympathetic and parasympathetic. To maintain physiological homeostasis, the sympathetic nervous system (SNS) and parasympathetic nervous system (PNS) perform antagonistically. In response to stress, exercise and heart disease there is a sympathetic stimulation which causes an elevation in HR. To provide a regulatory balance in physiological autonomic function, the parasympathetic modulation operates by decreasing the HR [32]. Consequently, ANS act together in coordinating visceral activities, adapting the functioning of each organ to circumstances to which the body is subjected.

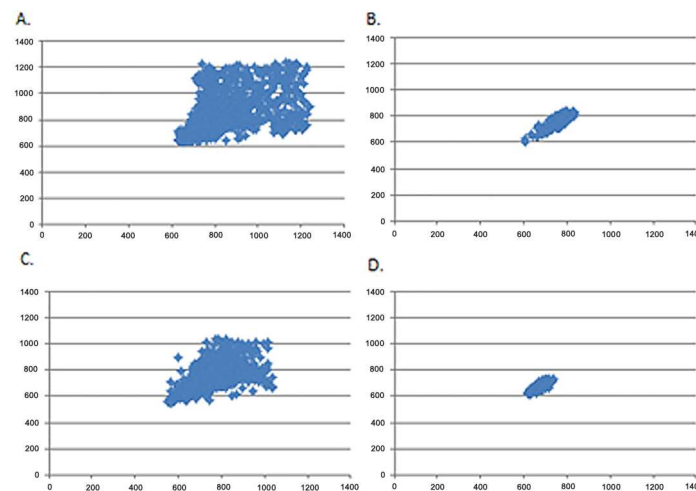


Fig 2. Visual pattern of the Poincaré plot observed in one subject before (A) and during cognitive computer task (B) in the TD group and in one subject before (C) and during cognitive computer task (D) in the DMD group.

doi:10.1371/journal.pone.0169633.g002

Table 6. Mean and standard error for HR (bpm), SBP (mmHg) and DBP (mmHg) initial and final in the cognitive task.

| Variable | TD | | DMD | | p |
|----------|-----------|-----------|-----------|-----------|-------|
| | Initial | Final | Initial | Final | |
| HR | 77.3±2.4 | 79.1±1.6 | 89.7±1.7 | 89.2±1.9 | 0.599 |
| SBP | 116.2±1.9 | 122.4±1.8 | 104.3±1.9 | 102.1±1.9 | 0.191 |
| DBP | 72.5±2.0 | 76.1±1.6 | 72.3±1.6 | 71.5±1.6 | 0.657 |

TD: Typical Development; DMD: Duchenne Muscular Dystrophy, HR: Heart rate, SBP: Systolic Blood Pressure, DBP: Diastolic Blood Pressure.

doi:10.1371/journal.pone.0169633.t006

Considering at rest HRV, this study found that the statistical differences between groups indicate lower parasympathetic modulation (rMSSD, pNN50, HF, SD1) and overall HRV (SDNN, LF, RRtri, TINN, SD2) in the DMD group, which reflects a lower ANS adaptive capacity due to pathological impairment.

Our results are supported by Dhargave et al. [33], who evaluated 124 patients with DMD and compared them with 50 age matched individuals in the supine position, and attained a reduction in autonomic regulation in the DMD group, with decreased PNS modulation and increased sympathetic predominance.

The cited studies [34, 35] evaluated patients with DMD and documented an increase in sympathetic modulation with reduced parasympathetic modulation at various pathological stages. This suggested that ANS involvement occurs in the early stages of DMD and likely due to progressive inactivity and neglect of physical fitness. Accordingly, the authors concluded that with advancing pathology, a secondary autonomic imbalance of cardiopulmonary dysfunction, along with progressive inactivity and lack of conditioning might increase the inherent autonomic abnormalities.

In 2001, Lanza [36] established lower HRV in DMD patients compared with the control group of healthy individuals. The data of Inoue et al. [37] illustrated that the autonomic abnormalities in the patients with DMD are characterized by a significant decrease in parasympathetic modulation and a significant increase in sympathetic modulation.

Whilst performing the computer tasks, this study reports that parasympathetic modulation is diminished in both groups. However, HRV responses were more intense in the DMD patients, since the pNN50 index was significant for the DMD group but no significant responses were found in the control group. Furthermore, the Poincaré plot demonstrated decreased HRV while performing the computer tasks when compared to at rest in both groups. However, the decrease was greater in the DMD group.

The quantitative analysis of the Poincaré plot provides analysis of chaotic behavior of heart rate dynamics [31]. In this context, we achieve an understanding of nonlinear analysis of HRV. If only linear methods are applied to RR intervals some information may be lost. Thus, indicating that the traditional time and frequency domains analysis are mostly insufficient to characterize the complexity of the heart rate dynamics [38].

Also, nonlinear analysis of HRV does not assess responses associated with the quantification of variability. It only provides the quality and correlation properties of the signal [39]. Previous studies have demonstrated nonlinear methods as clinically important to interpretation of pathological mechanisms related to HRV. So the nonlinear method provides extra information to linear methods alone [40, 41].

The tasks performed in this current study are identical in both groups. Nevertheless, due to the presence of progressive muscle weakness which is characteristic of the disease, we assert that muscular effort was greater in the DMD group of patients. This included patients with various degrees of severity, ranked from 1 to 9 on a scale of Vignos. The greatest effort exerted

during the task led to the reduction of parasympathetic modulation, necessary to maintain homeostasis of the body to the stimulus.

We reflect that the impaired cardiac autonomic modulation in DMD patients hindered their ANS response to cognitive stimulation, such as the computer task in this study.

Thus, the relationship between HRV and respiratory function in DMD might be explained by our data. Significant correlation was achieved between forced vital capacity and HRV indices [36]. Therefore, we hypothesized that the reduced respiratory strength in DMD patients caused by impaired muscle function is implicit in higher HRV responses to the computer task. Alternatively, it is important to mention that the authors noted moderate correlation ($r = 0.3$), suggestive that other factors are involved in the autonomic change.

The role of dystrophin in cardiac autonomic modulation could be involved in the elevation of HRV responses to cognitive computer tasks [42]. Dysfunction in the cognitive abilities of DMD is also suggested to be involved in changes in HRV responses to computer tasks. DMD is associated with behavioral and cognitive disabilities leading to impaired intellectual disabilities and lowered academic achievement [43].

This study suggests cardiac autonomic modulation data, useful for clinical practice by indicating that the use of computer tasks can support the functional capacities through training and competence of the ANS. Yet, the computational tasks must be performed under supervision and care taken to avoid psychological overload and exacerbation to the ANS.

The recent literature has found reduced HRV in DMD [21,22], and it is well known that HRV in DMD is reduced, possibly leading to cardiac [34–36] or respiratory [36–44] failure. As the computational task induces sympathetic primacy it may be applied as a tool for improvement of heart rate autonomic modulation.

This study has limitations that should be recognized: (1) Patients were included in the study that continued to use beta-blockers and angiotensin-converting enzyme (ACE) inhibitors. Despite the interference that medication could cause to autonomic functions. These medications are frequently used and their cessation is not medically feasible. Inoue et al. [37] reported that by limiting the study without the evaluation of patients taking medication for congestive heart failure, only individuals with milder form of the disease participated in the study; (2) The inclusion of patients with varying degrees of pathology (Vignos scale 1–9). However, the principle of obtaining HRV data at different stages of the disease is vital to better characterize the population.

Conclusion

DMD patients presented decreased HRV and exhibited greater intensity of cardiac autonomic responses during computer tasks characterized by vagal withdrawal when compared to the healthy typically developed control subjects.

Supporting Information

S1 File. Supplementary material about HRV.
(PDF)

Author Contributions

Conceptualization: MPBA TDS VEV RDR CBMM.

Data curation: TDS VEV RDR.

Formal analysis: TDS VEV RDR LCMV.

Funding acquisition: CBMM.

Investigation: MPBA TDS CBMM.

Methodology: MPBA TDS FMF CBMM.

Project administration: CBMM MPBA.

Resources: TDS FMF CBMM.

Supervision: CBMM VEV.

Validation: MPBA TDS VEV RDR.

Visualization: MPBA FMF.

Writing – original draft: MPBA TDS CBMM.

Writing – review & editing: VEV RDR LCMV DMG.

References

1. Lue YJ, Lin RF, Chen SS, Lu YM. Measurement of the functional status of patients with different types of muscular dystrophy. *Kaohsiung J Med Sci*. 2009; 25(6):325–33. doi: [10.1016/S1607-551X\(09\)70523-6](https://doi.org/10.1016/S1607-551X(09)70523-6) PMID: [19560997](https://pubmed.ncbi.nlm.nih.gov/19560997/)
2. Verhaart IE, Aartsma-Rus A. Gene therapy for duchenne muscular dystrophy. *Curr Opin Neurol*. 2012; 25(5):588–96. doi: [10.1097/WCO.0b013e328357b0be](https://doi.org/10.1097/WCO.0b013e328357b0be) PMID: [22892952](https://pubmed.ncbi.nlm.nih.gov/22892952/)
3. Jung IY, Chae JH, Park SK, Kim JH, Kim JY, Kim SJ, et al. The correlation analysis of functional factors and age with duchenne muscular dystrophy. *Ann Rehabil Med*. 2012; 36(1):22–32. doi: [10.5535/arm.2012.36.1.22](https://doi.org/10.5535/arm.2012.36.1.22) PMID: [22506232](https://pubmed.ncbi.nlm.nih.gov/22506232/)
4. Jansen M, Ong M, Coes HM, Eggermont F, Alfen NV, Groot IJM. The assisted 6-minute cycling test to assess endurance in children with a neuromuscular disorder. *Muscle Nerve*. 2012; 46:520–530. doi: [10.1002/mus.23369](https://doi.org/10.1002/mus.23369) PMID: [22987692](https://pubmed.ncbi.nlm.nih.gov/22987692/)
5. Aoki Y, Yokota T, Nagata T, Nakamura A, Tanihata J, Saito T, et al. Bodywide skipping of exons 45–55 in dystrophic mdx52 mice by systemic antisense delivery. *Proc Natl Acad Sci U S A*. 2012; 109(34):13763–13768. doi: [10.1073/pnas.1204638109](https://doi.org/10.1073/pnas.1204638109) PMID: [22869723](https://pubmed.ncbi.nlm.nih.gov/22869723/)
6. Goyenvalle A, Babbs A, Wright J, Wilkins V, Powell D, Garcia L, et al. Rescue of severely affected dystrophin/utrophin-deficient mice through scaav-u7snrna-mediated exon skipping. *Hum Mol Genet*. 2012; 21(11):2559–71. doi: [10.1093/hmg/dds082](https://doi.org/10.1093/hmg/dds082) PMID: [22388933](https://pubmed.ncbi.nlm.nih.gov/22388933/)
7. Athanasopoulos T, Foster H, Foster K, Dickson G. Codon optimization of the microdystrophin gene for duchenne muscular dystrophy gene therapy. *Methods Mol Biol*. 2011; 709:21–37. doi: [10.1007/978-1-61737-982-6_2](https://doi.org/10.1007/978-1-61737-982-6_2) PMID: [21194019](https://pubmed.ncbi.nlm.nih.gov/21194019/)
8. Li F, Li Y, Cui K, Li C, Chen W, Gao J. Detection of pathogenic mutations and the mechanism of a rare chromosomal rearrangement in a chinese family with becker muscular dystrophy. *Clin Chim Acta*. 2012; 414:20–5. doi: [10.1016/j.cca.2012.08.006](https://doi.org/10.1016/j.cca.2012.08.006) PMID: [22910583](https://pubmed.ncbi.nlm.nih.gov/22910583/)
9. Adams RD. *Diseases of muscle*, 3rd ed. Hagerstown, MD: Harper & Row; 1975.p.262–5.
10. Kenneth LT. Origins and early descriptions of duchenne muscular dystrophy. *Muscle Nerve*. 2003; 28:402–22. doi: [10.1002/mus.10435](https://doi.org/10.1002/mus.10435) PMID: [14506712](https://pubmed.ncbi.nlm.nih.gov/14506712/)
11. Cook AM, Hussey SM. *Assistive technologies: principles and practices*. St. Louis, Missouri. Mosby—Year Book, Inc., 1995.
12. Neistadt ME, Crepeau EB. *Terapia ocupacional*. 9th ed. Rio de janeiro: Guanabara Koogan, 2002. P.463.
13. Hashimoto Y, Ushiba J, Kimura A, Liu M, Tomita Y. Change in brain activity through virtual reality based brain-machine communication in a chronic tetraplegic subject with muscular dystrophy. *BMC Neurosci*. 2010; 11:117. doi: [10.1186/1471-2202-11-117](https://doi.org/10.1186/1471-2202-11-117) PMID: [20846418](https://pubmed.ncbi.nlm.nih.gov/20846418/)
14. Lalor EC, Kelly SP, Finucane C, Burke R, Smith R, Reilly RB, et al. Steady-state vep-based brain-computer interface control in an immersive 3 d gaming environment. *EURASIP J Appl Signal Processing*. 2005; 19:3156–3164.

15. Leeb R, Lee F, Keinrath C, Scherer R, Bischof H, Pfurtscheller G. Brain computer communication: motivation, aim, and impact of exploring a virtual apartment. *IEEE Trans Neural Syst Rehabil Eng.* 2007; 15:473–482. doi: [10.1109/TNSRE.2007.906956](https://doi.org/10.1109/TNSRE.2007.906956) PMID: [18198704](https://pubmed.ncbi.nlm.nih.gov/18198704/)
16. Mitchell L, Ziviani J, Oftedal S, Boyd R. The effect of virtual reality interventions on physical activity in children and adolescents with early brain injuries including cerebral palsy. *Dev Med Child Neurol.* 2012; 54: 667–67. doi: [10.1111/j.1469-8749.2011.04199.x](https://doi.org/10.1111/j.1469-8749.2011.04199.x) PMID: [22283557](https://pubmed.ncbi.nlm.nih.gov/22283557/)
17. Riener R, Dislaki E, Keller U, Koenig A, van Hedel H, Nagle A. Virtual reality aided training of combined arm and leg movements of children with cp. *Stud Health Technol Inform.* 2013; 184:349–55. PMID: [23400183](https://pubmed.ncbi.nlm.nih.gov/23400183/)
18. Barton GJ, Hawken MB, Foster RJ, Holmes G, Butler PB. The effects of virtual reality game training on trunk to pelvis coupling in a child with cerebral palsy. *J Neuroeng Rehabil.* 2013;7; 10:15. doi: [10.1186/1743-0003-10-15](https://doi.org/10.1186/1743-0003-10-15) PMID: [23391156](https://pubmed.ncbi.nlm.nih.gov/23391156/)
19. Burdea GC, Cioi D, Kale A, Janes WE, Ross SA, Engsborg JR. Robotics and gaming to improve ankle strength, motor control, and function in children with cerebral palsy—a case study series. *IEEE Trans Neural Syst Rehabil Eng.* 2013; 21(2):165–73. doi: [10.1109/TNSRE.2012.2206055](https://doi.org/10.1109/TNSRE.2012.2206055) PMID: [22773059](https://pubmed.ncbi.nlm.nih.gov/22773059/)
20. Barzilay O, Wolf A. Adaptive rehabilitation games. *J Electromyogr Kinesiol.* 2013; 23(1):182–9. doi: [10.1016/j.jelekin.2012.09.004](https://doi.org/10.1016/j.jelekin.2012.09.004) PMID: [23141481](https://pubmed.ncbi.nlm.nih.gov/23141481/)
21. Thomas TO, Jefferies JL, Lorts A, Anderson JB, Gao Z, Benson DW, et al. Autonomic dysfunction: a driving force for myocardial fibrosis in young Duchenne muscular dystrophy patients? *Pediatr Cardiol.* 2015; 36(3):561–8. doi: [10.1007/s00246-014-1050-z](https://doi.org/10.1007/s00246-014-1050-z) PMID: [25399404](https://pubmed.ncbi.nlm.nih.gov/25399404/)
22. Dittrich S, Tuerk M, Haaker G, Greim V, Buchholz A, Burkhardt B, et al. Cardiomyopathy in Duchenne Muscular Dystrophy: Current Value of Clinical, Electrophysiological and Imaging Findings in Children and Teenagers. *Klin Padiatr.* 2015; 227(4):225–31. doi: [10.1055/s-0034-1398689](https://doi.org/10.1055/s-0034-1398689) PMID: [26058601](https://pubmed.ncbi.nlm.nih.gov/26058601/)
23. Vanderlei LC, Pastre CM, Hoshi RA, Carvalho TD, Godoy MF. Basic notions of heart rate variability and its clinical applicability. *Rev Bras Cir Cardiovasc.* 2009; 24(2):205–217. PMID: [19768301](https://pubmed.ncbi.nlm.nih.gov/19768301/)
24. Gamelin FX, Berthoin S, Bosquet L. Validity of the polar s810 heart rate monitor to measure r-r intervals at rest. *Med Sci Sports Exerc.* 2006; 38(5): 887–93. doi: [10.1249/01.mss.0000218135.79476.9c](https://doi.org/10.1249/01.mss.0000218135.79476.9c) PMID: [16672842](https://pubmed.ncbi.nlm.nih.gov/16672842/)
25. Vignos PJ, Archibald KC. Maintenance of ambulation in childhood muscular dystrophy. *J Chronic Dis.* 1960; 12(2): 273–89.
26. Souza DE, França FR, Campos TF. Teste de labirinto: instrumento de análise na aquisição de uma habilidade motora. *Rev Bras Fisioter.* 2006; 10(3):355–360.
27. Task Force of the European Society of Cardiology (TFESC) & North American Society of Pacing and Electrophysiology (NASPE). Heart rate variability: standards of measurement, physiological interpretation and clinical use. *Circulation.* 1996; 93(5):1043–1065. PMID: [8598068](https://pubmed.ncbi.nlm.nih.gov/8598068/)
28. Godoy MF, Takakura LT, Correa PR. Relevância da análise do comportamento dinâmico não linear (teoria do caos) como elemento prognóstico de morbidade e mortalidade em pacientes submetidos à cirurgia de revascularização miocárdica. *Arq Ciênc Saúde.* 2005; 12(4):167–71.
29. Hoshi RA, Vanderlei LC, de Godoy MF, Bastos FD, Netto J Jr, Pastre CM. Temporal sequence of recovery-related events following maximal exercise assessed by heart rate variability and blood lactate concentration. *Clin Physiol Funct Imaging.* 2016.
30. Brunetto AF, Silva BM, Roseguini BT, Hirai DM, Dartagnan PG. Limiar ventilatório e variabilidade cardíaca em adolescentes. *Rev Bras Med Esporte.* 2005; 11(1):22–27.
31. Hoshi RA, Pastre CM, Vanderlei LC, Godoy MF. Poincaré plot indexes of heart rate variability: relationships with other nonlinear variables. *Auton Neurosci.* 2013; 177(2):271–4. doi: [10.1016/j.autneu.2013.05.004](https://doi.org/10.1016/j.autneu.2013.05.004) PMID: [23755947](https://pubmed.ncbi.nlm.nih.gov/23755947/)
32. Acharya UR, Joseph KP, Kannathal N, Lim CM, Suri JS. Heart rate variability: a review. *Med Biol Eng Comput.* 2006; 44:1031–1051. doi: [10.1007/s11517-006-0119-0](https://doi.org/10.1007/s11517-006-0119-0) PMID: [17111118](https://pubmed.ncbi.nlm.nih.gov/17111118/)
33. Dhargave P, Nalini A, Abhishekh HA, Meghana A, Nagarathna R, Raju TR, et al. Assessment of cardiac autonomic function in patients with Duchenne muscular dystrophy using short term heart rate variability measures. *Eur J Paediatr Neurol.* 2014; 18(3):317–20. doi: [10.1016/j.ejpn.2013.12.009](https://doi.org/10.1016/j.ejpn.2013.12.009) PMID: [24445161](https://pubmed.ncbi.nlm.nih.gov/24445161/)
34. Yotsukura M, Sasaki K, Kachi E, Sasaki A, Ishihara T, Ishikawa K. Circadian rhythm and variability of heart rate in Duchenne-type progressive muscular dystrophy. *Am J Cardiol.* 1995; 76:947–951. PMID: [7484837](https://pubmed.ncbi.nlm.nih.gov/7484837/)
35. Yotsukura M, Fujii K, Katayama A, Tomono Y, Ando H, Sakata K, et al. Nine-year follow-up study of heart rate variability in patients with Duchenne-type progressive muscular dystrophy. *Am Heart J.* 1998; 136:289–96. doi: [10.1053/hj.1998.v136.89737](https://doi.org/10.1053/hj.1998.v136.89737) PMID: [9704692](https://pubmed.ncbi.nlm.nih.gov/9704692/)

36. Lanza GA. Impairment of cardiac autonomic function in patients with Duchenne muscular dystrophy: relationship to myocardial and respiratory function. *Am Heart J.* 2001; 141:808–12. PMID: [11320370](#)
37. Inoue M, Mori K, Hayabuchi Y, Tataru K, Kagami S. Autonomic function in patients with Duchenne muscular dystrophy. *Pediatr Int.* 2009; 51(1):33–40. doi: [10.1111/j.1442-200X.2008.02656.x](#) PMID: [19371275](#)
38. Krstacic G, Martinis M, Vargovic E, Krstacic A, Smalcelj A, Jembrek-Gostovic M. Non-linear dynamics in patients with stable angina pectoris. *Comput Cardiol.* 2001; 28:45–48.
39. Beckers F, Verheyden B, Aubert AE. Aging and nonlinear heart rate control in a healthy population. *Am J Physiol Heart Circ Physiol.* 2006; 290(6):H2560–H70. doi: [10.1152/ajpheart.00903.2005](#) PMID: [16373585](#)
40. Voss A, Schulz S, Schroeder R, Baumert M, Caminal P. Methods derived from nonlinear dynamics for analysing heart rate variability. *Philos Trans A Math Phys Eng Sci.* 2009; 367(1887):277–96. doi: [10.1098/rsta.2008.0232](#) PMID: [18977726](#)
41. Buccelletti E, Gilardi E, Scaini E, Galiuto L, Persiani R, Biondi A, et al. Heart rate variability and myocardial infarction: systematic literature review and meta-analysis. *Eur Rev Med Pharmacol Sci.* 2009; 13(4):299–307. PMID: [19694345](#)
42. Chaussonnet R, Edeline JM, Le Bec B, El Massioui N, Laroche S, Vaillend C. Cognitive dysfunction in the dystrophin-deficient mouse model of Duchenne muscular dystrophy: A reappraisal from sensory to executive processes. *Neurobiol Learn Mem.* 2015; 124:111–22. doi: [10.1016/j.nlm.2015.07.006](#) PMID: [26190833](#)
43. Perronnet C, Vaillend C. Dystrophins, utrophins, and associated scaffolding complexes: role in mammalian brain and implications for therapeutic strategies. *J Biomed Biotechnol.* 2010; 2010:849426. doi: [10.1155/2010/849426](#) PMID: [20625423](#)
44. Mochizuki H, Okahashi S, Ugawa Y, Tamura T, Suzuki M, Miyatake S, et al. Heart rate variability and hypercapnia in Duchenne muscular dystrophy. *Intern Med.* 2008; 47(21):1893–7. PMID: [18981633](#)