


1959

Boone County Preliminary Ground Water Study 1959 (GM-14): Svoboda, G.R. Conservation and Survey Division , size 8.5" X 11".

G.R. Svoboda

University of Nebraska-Lincoln

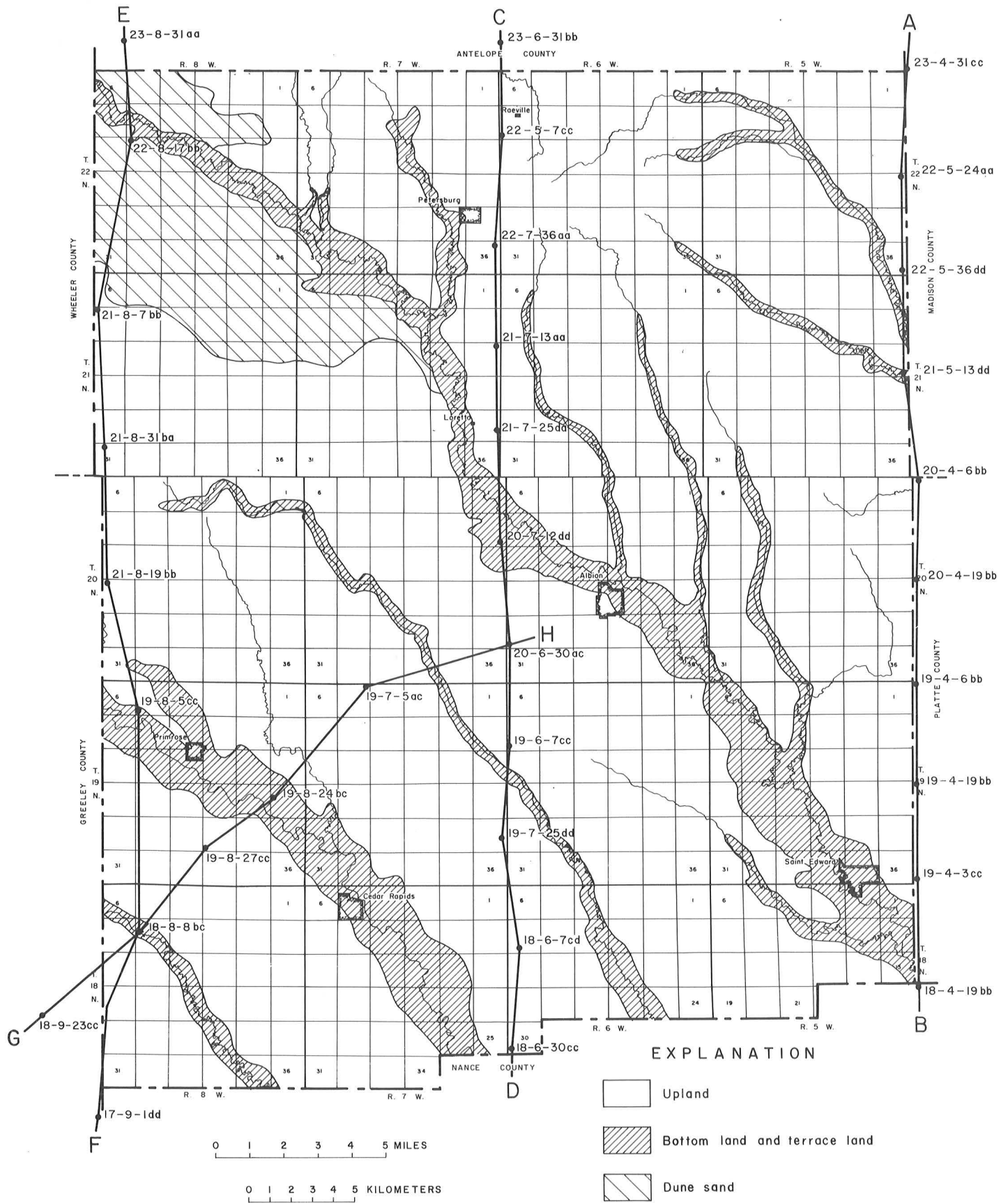
Follow this and additional works at: <https://digitalcommons.unl.edu/conservationsurvey>

 Part of the [Geology Commons](#), [Geomorphology Commons](#), [Hydrology Commons](#), [Paleontology Commons](#), [Sedimentology Commons](#), [Soil Science Commons](#), and the [Stratigraphy Commons](#)




Svoboda, G.R., "Boone County Preliminary Ground Water Study 1959 (GM-14): Svoboda, G.R. Conservation and Survey Division , size 8.5" X 11"." (1959). *Conservation and Survey Division*. 665.

<https://digitalcommons.unl.edu/conservationsurvey/665>

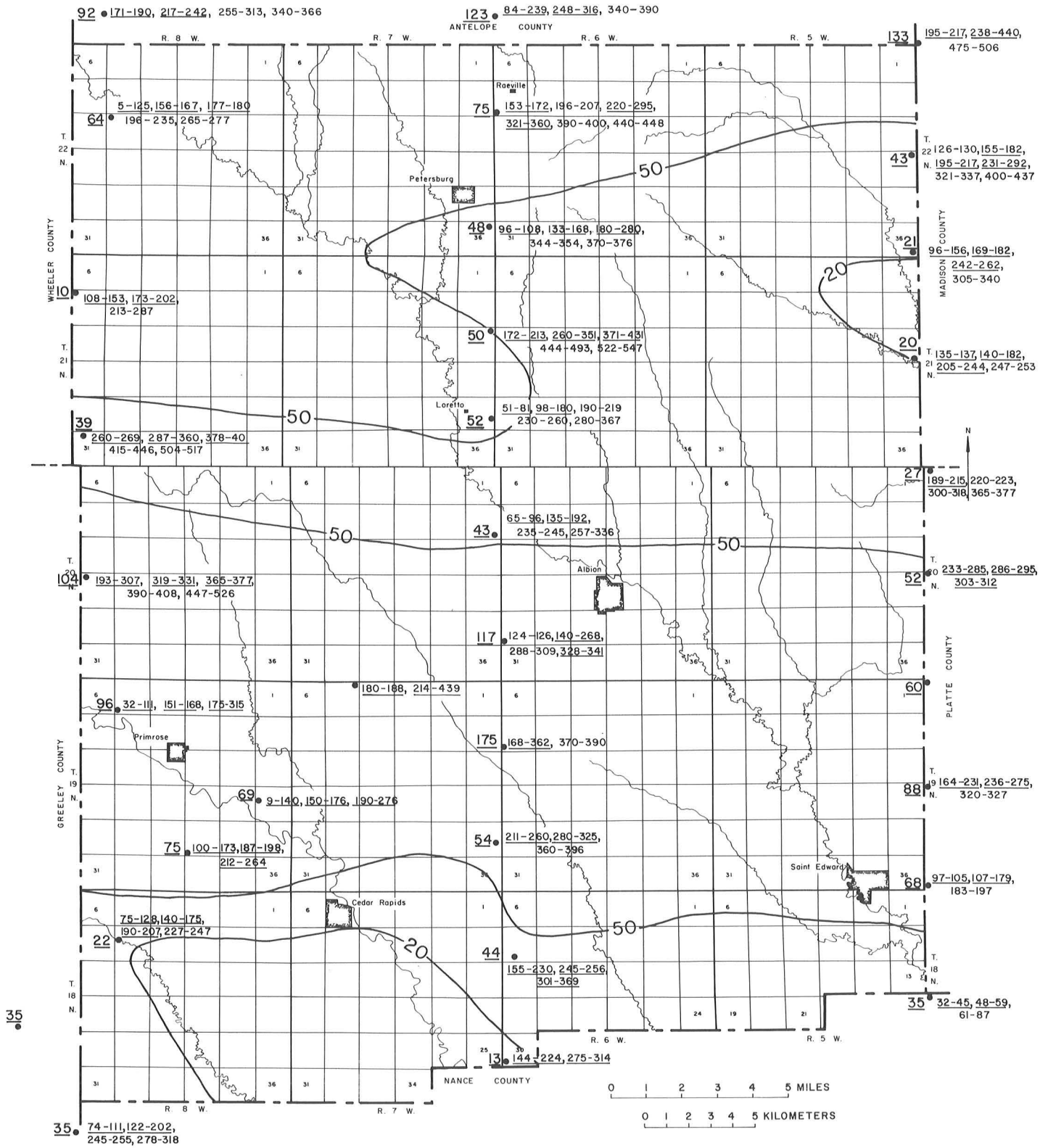
This Article is brought to you for free and open access by the Natural Resources, School of at DigitalCommons@University of Nebraska - Lincoln. It has been accepted for inclusion in Conservation and Survey Division by an authorized administrator of DigitalCommons@University of Nebraska - Lincoln.



Conservation & Survey Div.
 University of Nebraska
 Prepared by G.R. Svoboda
 April 1959

- EXPLANATION**
-  Upland
 -  Bottom land and terrace land
 -  Dune sand
 - 23-4-31cc Water survey test well
 - A—●—●—B Line of cross section

BOONE COUNTY, NEBRASKA, GROUNDWATER STUDY

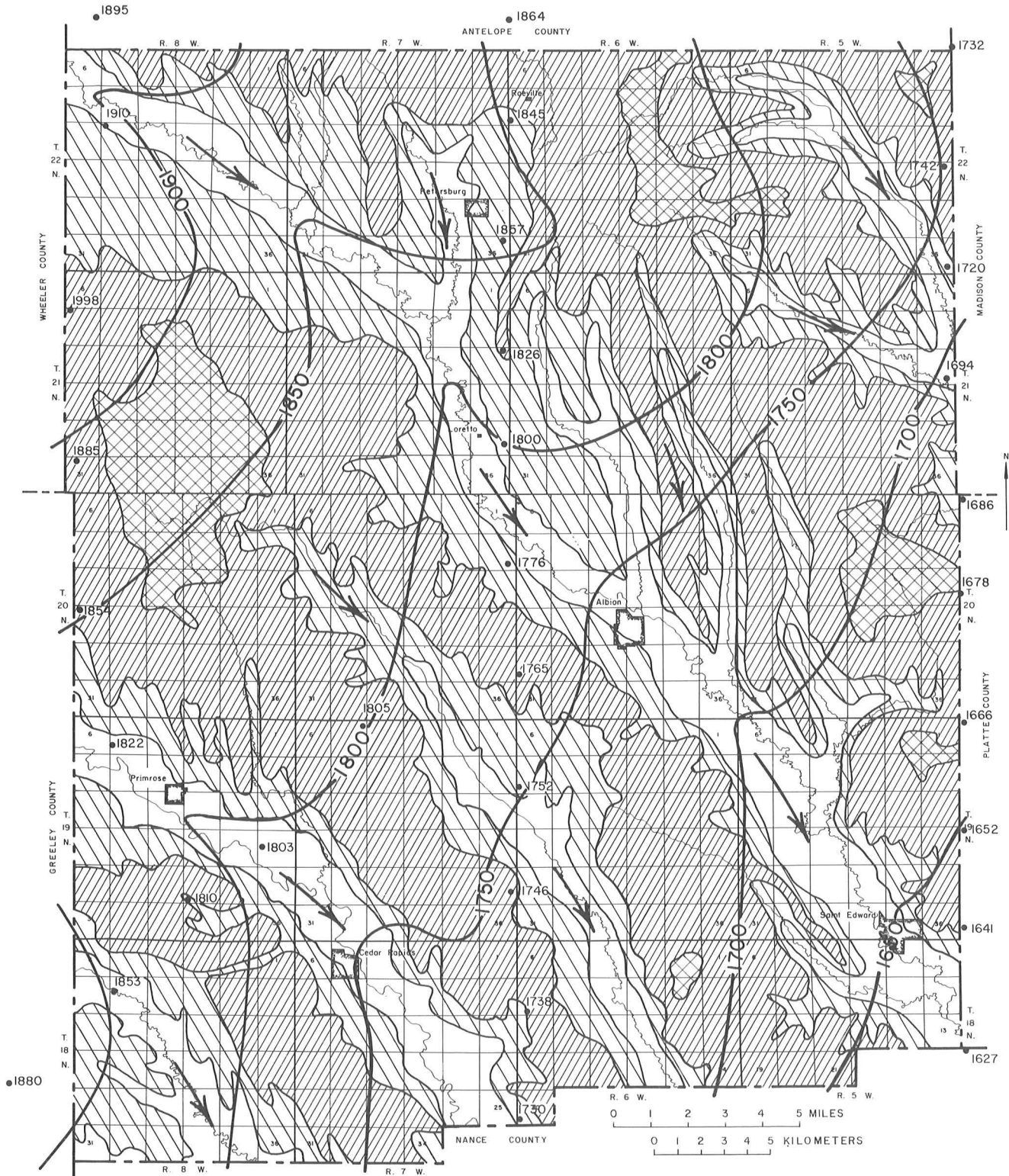


— 20 —
 Line of equal saturated thickness. Figure indicates effective thickness of water-saturated sand and gravel along line.

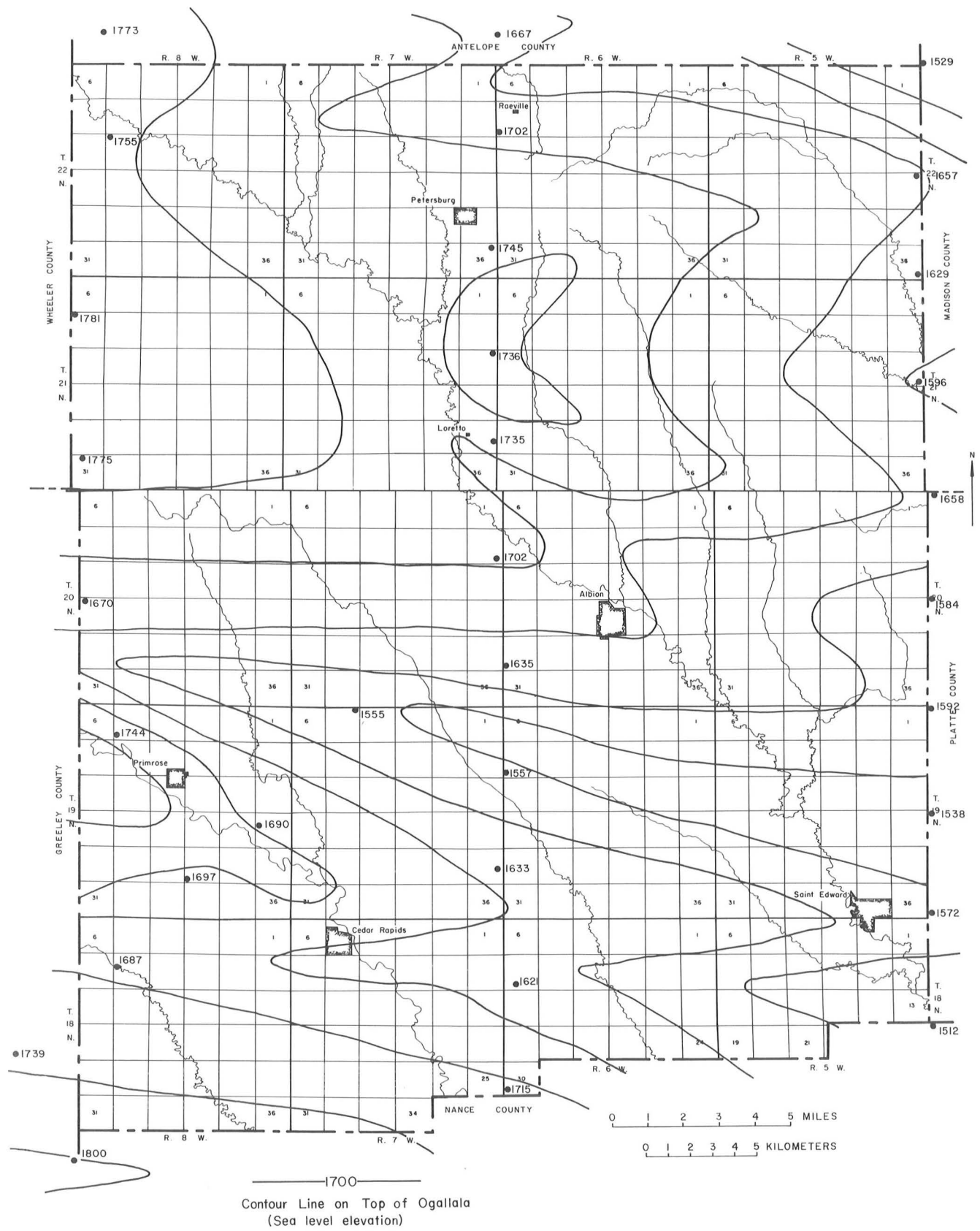
Test hole
 Number to left of symbol is thickness, in feet, of effective saturated sand and gravel.

Numbers to right of symbol are depth intervals, in feet, of water-saturated sand and gravel. Underlined intervals are better water-bearing materials.

Groundwater Map Showing Thickness of Water Saturated Sand and Gravel
 (Based on test drilling by University of Nebraska Conservation and Survey Division (IANR) and U.S. Geological Survey)

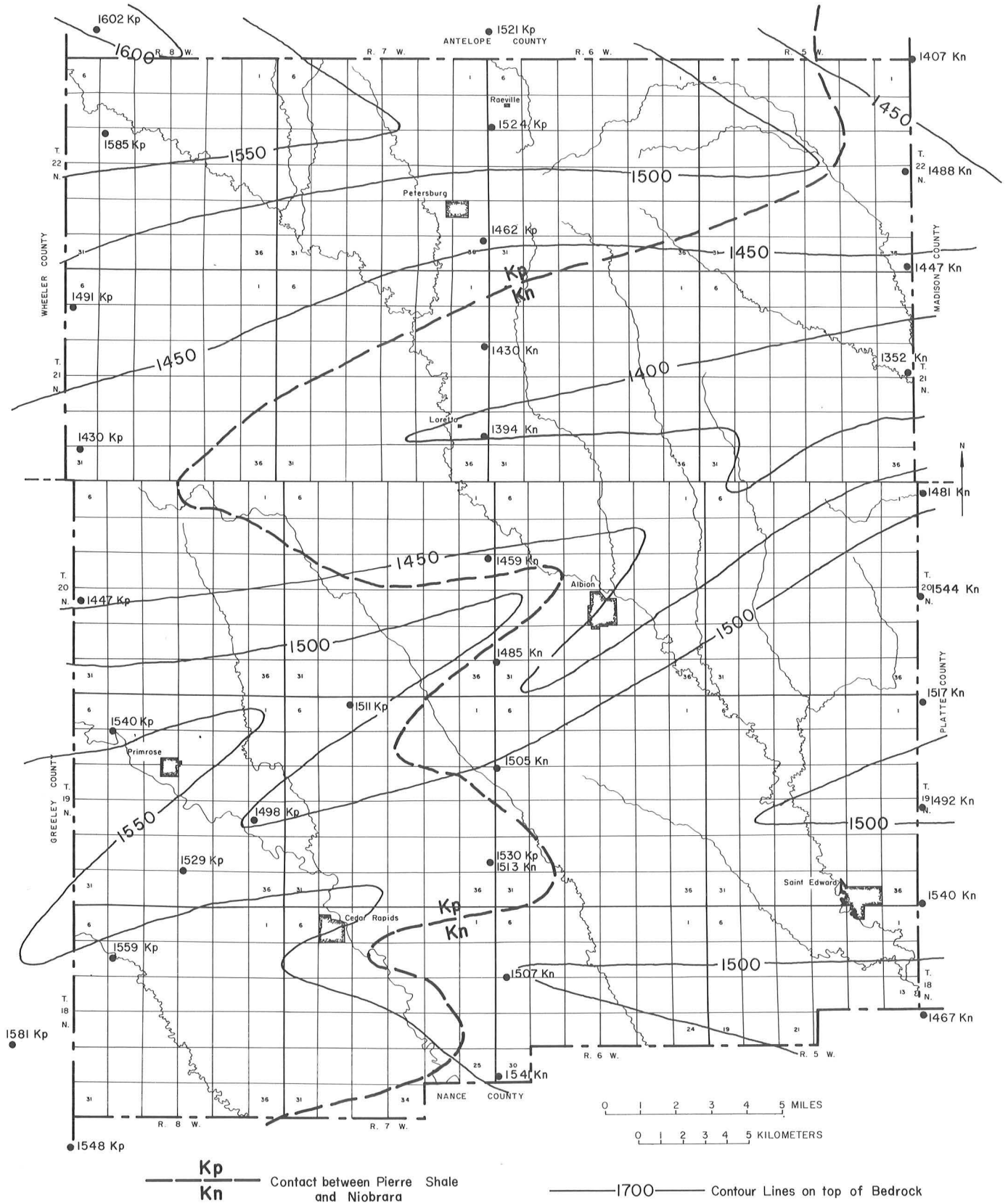


Water Table Contour & Depth to Static Water Level



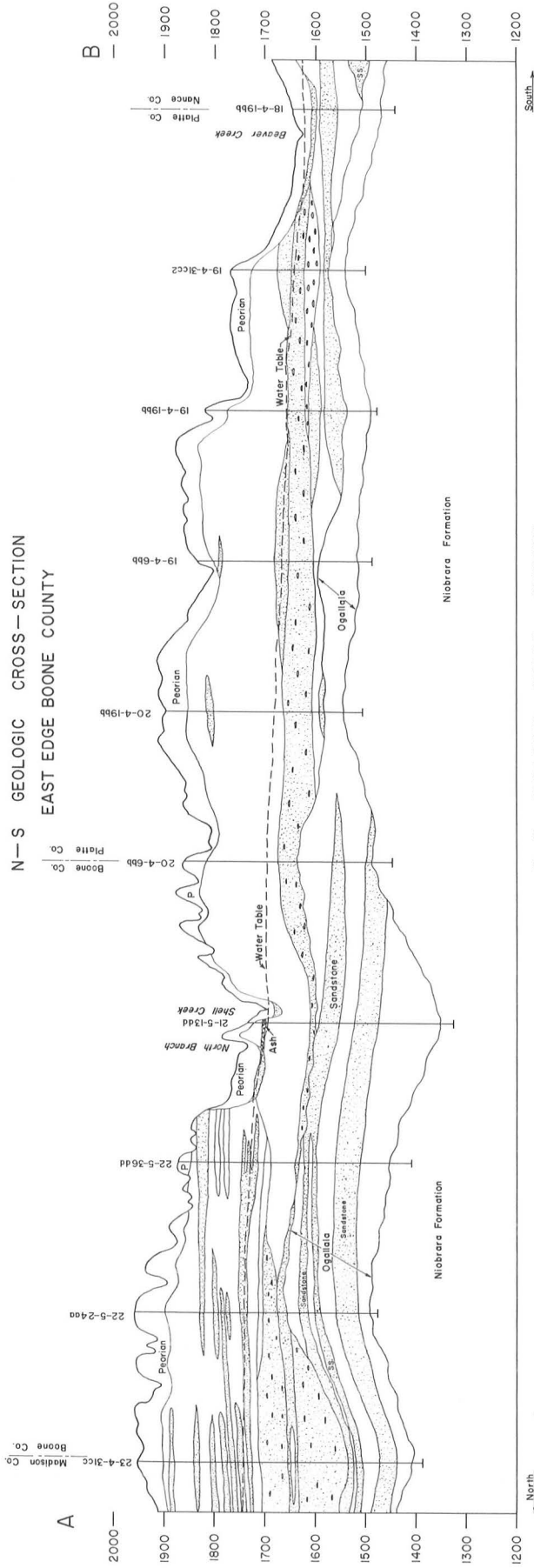
—1700—
 Contour Line on Top of Ogallala
 (Sea level elevation)

Contour Map Showing Configuration of the Top of the Ogallala Formation

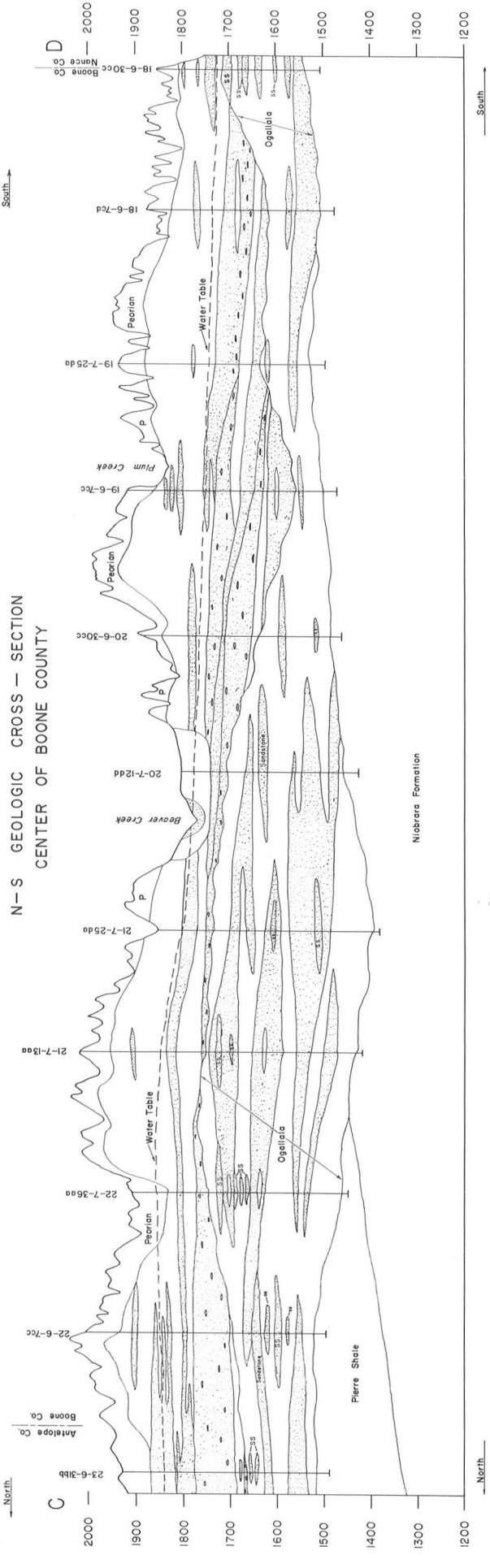


Contour Map Showing Configuration of the Top of the Shale Bedrock

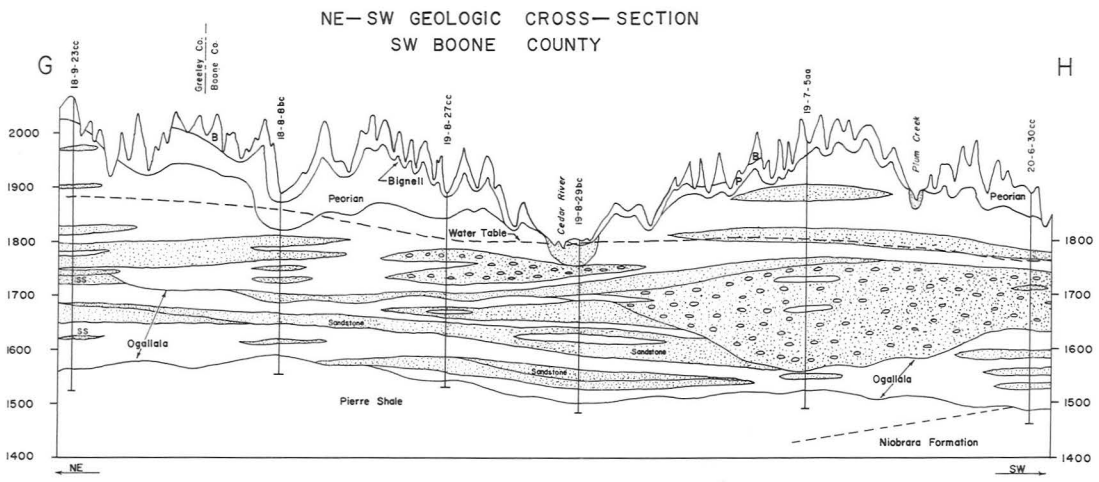
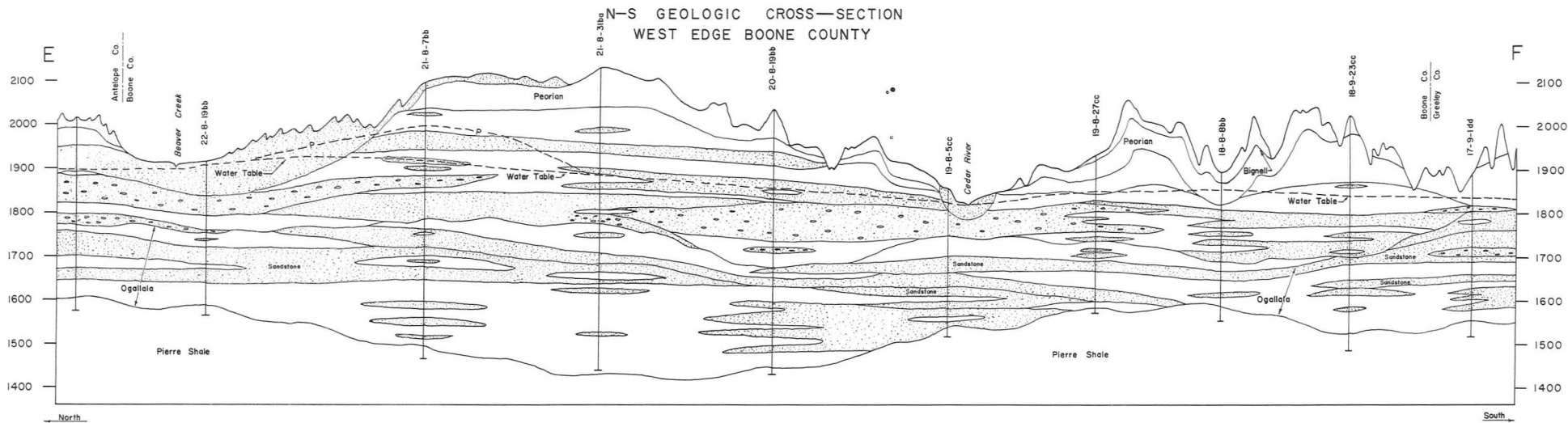
N-S GEOLOGIC CROSS-SECTION
EAST EDGE BOONE COUNTY



N-S GEOLOGIC CROSS-SECTION
CENTER OF BOONE COUNTY



X



LEGEND	
SAND	
GRAVEL	
SAND & GRAVEL	
SILT & CLAY	
SANDSTONE	

Conservation & Survey Division, University of Nebraska
 E.C. Reed, Director Prepared by G.R. Svoboda
 May 1959