

A background network diagram consisting of numerous grey dots connected by thin grey lines, forming a complex web of connections. The dots vary in opacity, with some being solid black and others semi-transparent. The lines are also thin and grey, creating a sense of depth and connectivity.

# You Think, Therefore I Am: Crowdsourcing Consciousness

Justin Campbell  
Philosophy & Psychology  
Utah State University

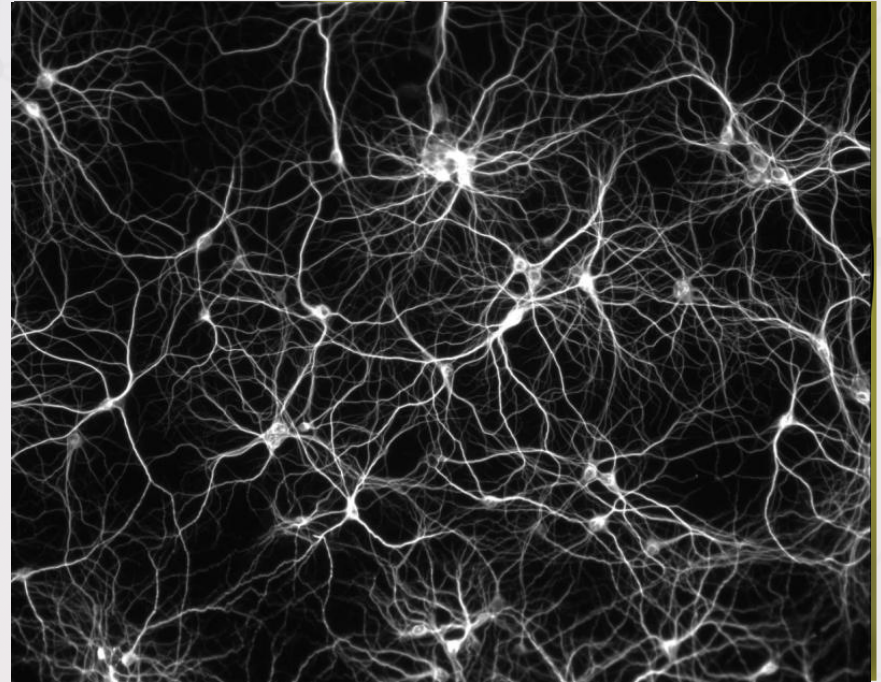
A network diagram consisting of numerous small grey circular nodes connected by thin, light grey lines. The nodes are scattered across the frame, with a higher density in the upper right and lower right areas. The background is a light blue gradient that fades into white at the bottom.

Where would I go to step-into your mind?



# The Theater of Consciousness

- There is an intimate feeling that subjective experience is like a movie
  - If you could somehow “peek inside” you’d find no such theater
- Our experience is the product of a storm of electrical activity from nearly 100 billion neurons



# Reading Minds



Without any direct access, we intuit the minds of others

What is this object?



How did you know?

**You don't know how you know, you just do.**

How Do We Make  
Sense of Experience?

Language

Behavior

Culture

Experiences

Context



# Crowdsourcing Consciousness

- The function of consciousness is **social**
  - Attributing consciousness to others helps one navigate a shared social environment
  - e.g., allows you to predict intentions, beliefs, desires
- The models constructed about other's minds, **and our own**, are informed largely by dynamic social phenomena
  - e.g., culture, previous interactions, socialization
- In sum, **our experience is crowdsourced**



Water is not only a letter of the mind  
as we are called "Arctei palang"

