

University of Massachusetts Amherst
ScholarWorks@UMass Amherst

Veterinary & Animal Sciences Department Faculty
Publication Series

Veterinary & Animal Sciences

2015

Tissue-specific regulation of *Igf2r*/*Airn* imprinting during gastrulation

Chelsea Marcho

University of Massachusetts Amherst

Ariana Bevilacqua

University of Massachusetts Amherst

Kimberly D. Tremblay

University of Massachusetts Amherst

Jesse Mager

University of Massachusetts Amherst

Follow this and additional works at: https://scholarworks.umass.edu/vasci_faculty_pubs

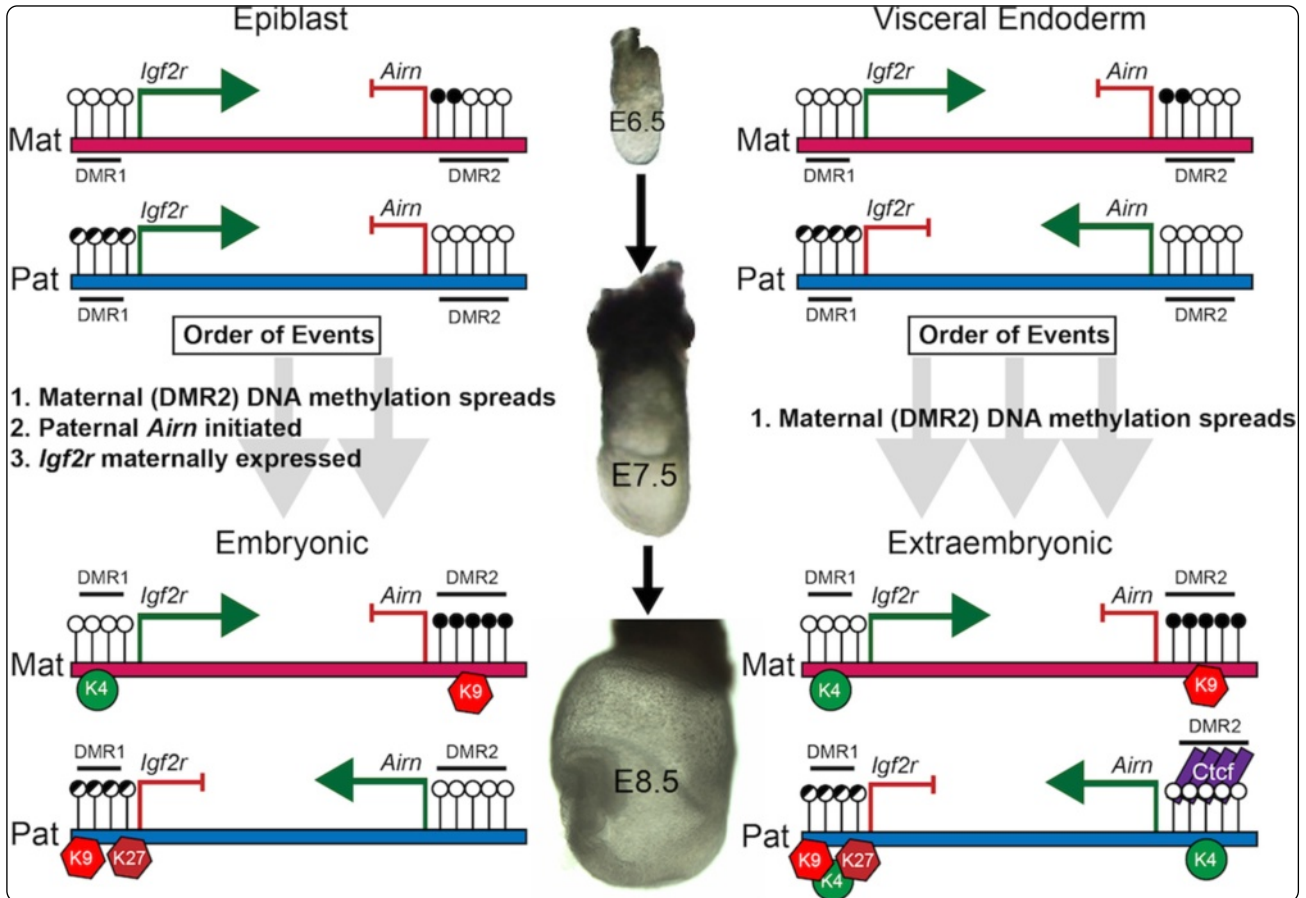
Recommended Citation

Marcho, Chelsea; Bevilacqua, Ariana; Tremblay, Kimberly D.; and Mager, Jesse, "Tissue-specific regulation of *Igf2r*/*Airn* imprinting during gastrulation" (2015). *Epigenetics & Chromatin*. 4.
<https://doi.org/10.1186/s13072-015-0003-y>

This Article is brought to you for free and open access by the Veterinary & Animal Sciences at ScholarWorks@UMass Amherst. It has been accepted for inclusion in Veterinary & Animal Sciences Department Faculty Publication Series by an authorized administrator of ScholarWorks@UMass Amherst. For more information, please contact scholarworks@library.umass.edu.



Epigenetics & Chromatin



Tissue-specific regulation of *Igf2r/Airn* imprinting during gastrulation

Marcho *et al.*

RESEARCH

Open Access

Tissue-specific regulation of *Igf2r/Airn* imprinting during gastrulation

Chelsea Marcho, Ariana Bevilacqua, Kimberly D Tremblay and Jesse Mager*

Abstract

Background: Appropriate epigenetic regulation of gene expression during lineage allocation and tissue differentiation is required for normal development. One example is genomic imprinting, which is defined as parent-of-origin mono-allelic gene expression. Imprinting is established largely due to epigenetic differences arriving in the zygote from sperm and egg haploid genomes. In the mouse, there are approximately 150 known imprinted genes, many of which occur in imprinted gene clusters that are regulated together. One imprinted cluster includes the maternally expressed *Igf2r*, *Slc22a2*, and *Slc22a3* genes and the paternally expressed long non-coding RNA (lncRNA) *Airn*. Although it is known that *Igf2r* and *Airn* are reciprocally imprinted, the timing of imprinted expression and accompanying epigenetic changes have not been well characterized *in vivo*.

Results: Here we show lineage- and temporal-specific regulation of DNA methylation and histone modifications at the *Igf2r/Airn* locus correlating with differential establishment of imprinted expression during gastrulation. Our results show that *Igf2r* is expressed from both alleles in the E6.5 epiblast. After gastrulation commences, the locus becomes imprinted in the embryonic lineage with the lncRNA *Airn* expressed from the paternal allele and *Igf2r* restricted to maternal allele expression. We document differentially enriched allele-specific histone modifications in extraembryonic and embryonic tissues. We also document for the first time allele-specific spreading of DNA methylation during gastrulation concurrent with establishment of imprinted expression of *Igf2r*. Importantly, we show that imprinted expression does not change in the extraembryonic lineage even though maternal DMR2 methylation spreading does occur, suggesting distinct mechanisms at play in embryonic and extraembryonic lineages.

Conclusions: These results indicate that similar to preimplantation, gastrulation represents a window of dynamic lineage-specific epigenetic regulation *in vivo*.

Background

Genomic imprinting is an epigenetic phenomenon that results in mono-allelic gene expression in a parent-of-origin manner. Imprinted expression has been identified at approximately 150 mouse genes, which often occurs in clusters containing multiple imprinted transcripts [1,2]. Expression of imprinted genes is thought to be established *in cis* by allele-specific DNA methylation established at imprinting control regions (ICRs) in the gametes, thus arriving in the zygote as maternal and paternal specific information. A regulatory theme has emerged at many imprinted clusters in which a single long non-coding RNA (lncRNA) is thought to repressively regulate genes *in cis* through direct transcriptional blocking and/or recruitment of repressive chromatin

remodeling complexes such as G9a and PRC2, resulting in differential allele-specific histone modifications [3,4].

One cluster on mouse chromosome 17 includes the maternally expressed *Igf2r*, *Slc22a2*, and *Slc22a3* genes and the paternally expressed lncRNA *Airn* [5], and several non-imprinted genes (*Slc22a1*, *Mas*, and *Plg*). The *Airn* promoter lies in the second intron of *Igf2r*, and *Airn* transcription occurs from the opposite strand overlapping *Igf2r* exons 1 and 2 [5-7]. Paternal *Airn* expression may participate in imprinting of the maternally expressed genes by blocking access of the transcriptional machinery to the *Igf2r* start site [8], and transcription of *Airn* has been shown to be required for silencing of *Igf2r* [8,9]. Paternal allele silencing of the other imprinted genes in the cluster only occurs in extraembryonic lineages and may be a result of *Airn* recruitment of repressive complexes such as G9a to their promoters [4]. Biallelic expression of *Igf2r* is

* Correspondence: jmager@vasci.umass.edu
Department of Veterinary and Animal Sciences, University of Massachusetts at Amherst, ISB 427M, 661 N. Pleasant Street, Amherst, MA 01003, USA

observed in ES cells and only becomes imprinted upon differentiation *in vitro* [4]. Although the expression of *Igf2r* and *Airn* has been documented in preimplantation and late stage embryos [10-12], lineage-specific expression dynamics have not been observed during gastrulation. Recent studies have focused on mechanisms in ES cell models [4,8,13], but the precise timing and mechanisms responsible for imprinting at *Igf2r/Airn* *in vivo* remain unknown. Here we characterize tissue-specific dynamics of expression and epigenetic modifications that occur at *Igf2r/Airn* during normal gastrulation. We show that significant epigenetic regulation occurs at imprinted loci during epiblast differentiation *in vivo*.

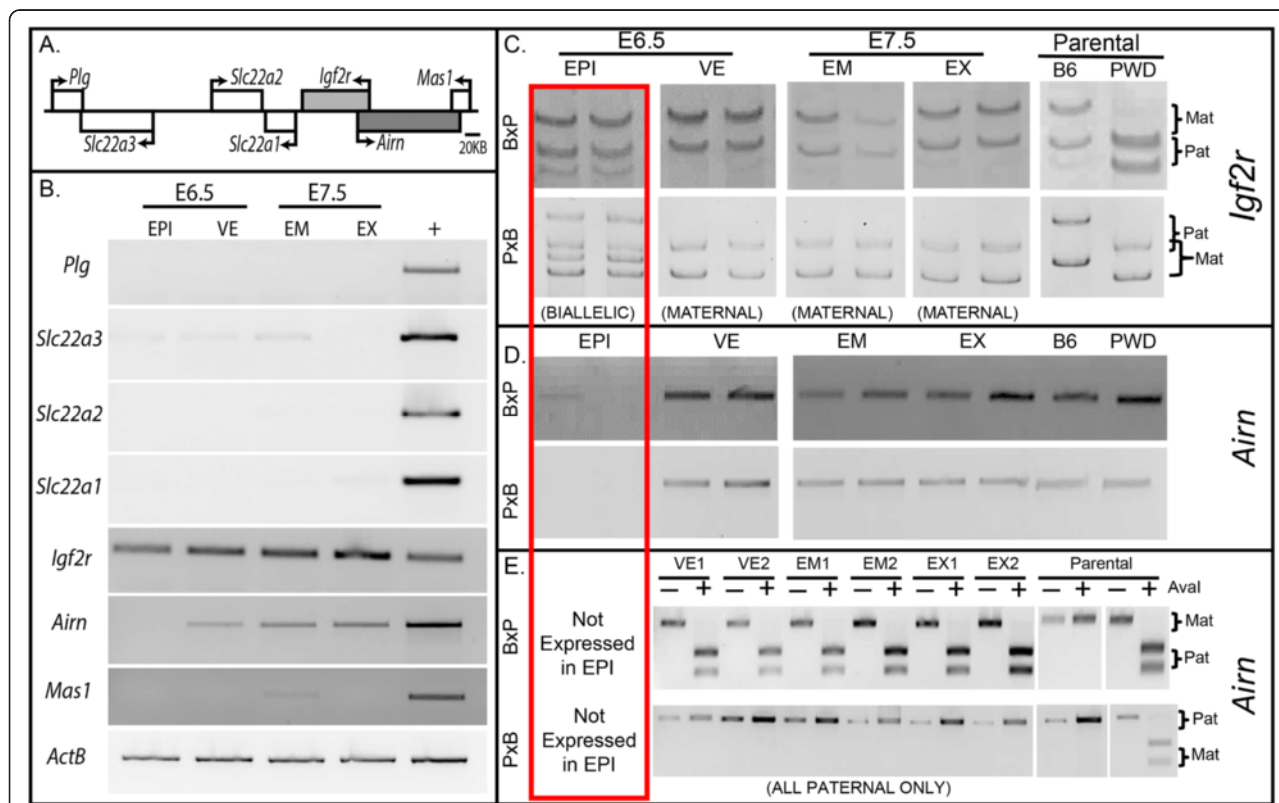
Results and discussion

Imprinted expression of *Igf2r* and *Airn* during gastrulation

The *Igf2r/Airn* imprinted cluster contains the maternally expressed *Igf2r*, *Slc22a2*, and *Slc22a3*, the paternally expressed *Airn*, and the non-imprinted *Plg*, *Slc22a1*, and *Mas1* genes (Figure 1A). We determined the expression

of the genes within the cluster in embryonic and extra-embryonic tissues from C57BL/6JxPWD/PhJ-F1 embryos at embryonic days E6.5 and E7.5 by RT-PCR (Figure 1B). Of the genes in the cluster, *Igf2r* is expressed in both the epiblast (EPI) and visceral endoderm (VE) at E6.5 and the embryonic (EM) and extraembryonic (EX) tissues of E7.5 embryos (Figure 1B). *Airn* is expressed in the VE at E6.5 and in both tissues at E7.5. However, no *Airn* was detected in the epiblast at E6.5 (Figure 1B).

To further understand the imprinted expression of *Igf2r* and *Airn* during gastrulation, we carried out allele-specific expression analysis of C57BL/6JxPWD/PhJ-F1 and C57BL/6J-Chr 17^{PWD/Ph/Fore}xC57BL/6J-F1 embryos (hereafter referred to as B x P and P x B F1 embryos, respectively). Single-strand confirmation polymorphism (SSCP) revealed that *Igf2r* is expressed from both alleles in the EPI of E6.5 embryos (Figure 1C, red box). In E6.5 VE, *Igf2r* is maternally expressed and paternally imprinted (Figure 1C). At E7.5, *Igf2r* is imprinted in both tissues (Figure 1C). Our results show that in the multipotent epiblast, *Igf2r* is



expressed from both alleles, but once embryonic cells have adopted defined lineages at E7.5, *Igf2r* expression becomes imprinted. This correlation suggests a relationship between relative differentiation state *in vivo* and imprinted expression at the locus - consistent with ES cell models.

Since *Airn* is thought to establish imprinting of *Igf2r* [8], we also examined allele-specific *Airn* expression. In E6.5 EPI, *Airn* is not expressed (Figure 1B,D, red box), corresponding with biallelic *Igf2r* expression (Figure 1C). In the VE at E6.5, where *Igf2r* is imprinted, we observe reciprocal imprinting (paternal expression) of *Airn* (Figure 1E). At E7.5, *Igf2r* and *Airn* are imprinted in both embryonic and extraembryonic tissue (Figure 1E). This change in imprinted expression between EPI and EM also occurs in the reciprocal cross (P × B, Figure 1C,D,E), ruling out background-specific genetic differences. *Airn* has also been shown to regulate imprinting of *Slc22a2* and *Slc22a3* in extraembryonic lineages [5]; however, we could not detect these transcripts at appreciable levels during gastrulation (Figure 1B). The change in *Igf2r* and *Airn* expression indicate a lineage- and stage-specific establishment of imprinted expression during normal development. We therefore examined allele-specific epigenetic modifications at the locus.

DNA methylation spreads at DMR 2

Allele-specific DNA methylation at ICRs or differentially methylated regions (DMRs) are required for imprinted expression at many loci [14-16]. The *Igf2r/Airn* locus has

two known differentially methylated regions (Figure 2A, [15]). Methylation at DMR1 has been shown to occur late in development in a tissue-specific manner after imprinting is established and is thought to be a consequence of *Airn* expression [17]. In all tissues that we examined during gastrulation, DNA methylation at DMR1 is not significantly different than methylation in the adult brain [12] (Additional file 1: Figure S1), suggesting that DMR1 DNA methylation does not regulate the silencing of the paternal *Igf2r* allele that we observe at E7.5.

DMR2 methylation has been shown to be present in oocytes [17], defining DMR2 as an ICR. Previous reports documented DMR2 by methylation-sensitive restriction enzymes, presenting the analysis of two specific CpG dinucleotides [13,17]. To gain a more comprehensive understanding of the methylation status, we designed two overlapping PCR amplicons for bisulfite sequencing at DMR2 (Figure 2A). With this approach, we fortuitously identified the precise 3' boundary of ICR methylation present in oocytes [CpG at Chr17:12,742,488-12,742,489 (Figure 2A, red asterisk)]. In E6.5 EPI and VE, the precise ICR border was maintained on the maternal allele (Figure 2B). However, by E7.5 DNA methylation had spread in the 3' direction in both embryonic and extraembryonic tissues (Figure 2B). These results indicate that although ICR methylation at DMR2 is established in the female germline [17], maternal allele-specific methylation increases/spreads in cells of all lineages

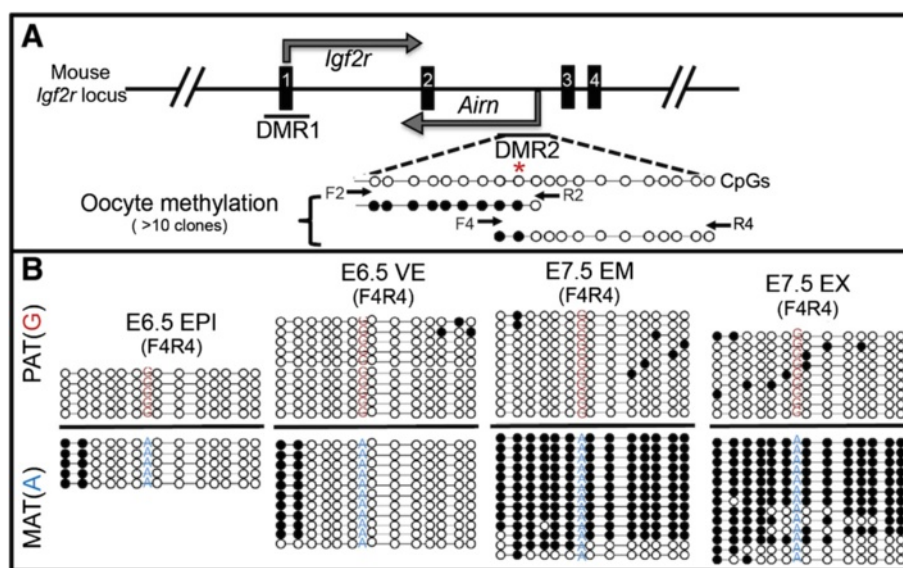


Figure 2 DNA methylation at DMR2. (A) Schematic of the mouse *Igf2r/Airn* locus: transcription start sites (bent arrows), *Igf2r* exons (solid boxes), and location of DMR1 and DMR2. Two amplicons (F2R2 and F4R4) spanning 20 CpG dinucleotides were analyzed. Methylation in oocytes confirmed that DMR2 is an ICR and defined the methylation boundary (red asterisk in A). **(B)** ICR methylation is maintained in EPI and VE, but spreading of maternal DMR2 methylation occurs in EM and EX (compare EPI to EM, and VE to EX). Filled circles = methylated cytosine, Open = unmethylated cytosine. Asterisk denotes ICR border. Arrows indicate bisulfite-sequencing primer locations in (A). Parental SNP indicated on each bisulfite strand. Pat, paternal; Mat, maternal.

coincident with the onset of gastrulation. It is particularly intriguing that the methylation spreading occurs in the extraembryonic tissue given that reciprocal imprinting of *Igf2r* and *Airn* is already established. It is also evident that the increase in DNA methylation is coincident with initiation of *Airn* expression in the epiblast, suggesting a tissue-specific mechanistic relationship. It may be of interest in the future to determine how far DNA methylation continues, if the spreading also occurs in the 5' direction, and if the spreading is required for paternal silencing of *Igf2r* and activation of *Airn*.

***Airn* is progressively expressed during development**

To more closely examine the timing of *Airn* expression, paternal *Igf2r* silencing, and the spread of DNA methylation at DMR2, we carefully assessed litters of late-streak stage embryos at approximately E7.0 to establish relative developmental age within each litter (Figure 3A). The spreading of maternal methylation at DMR2 has already occurred in all embryos examined at approximately E7.0 (Figure 3A shows four embryos from the same litter). Surprisingly, *Igf2r* is expressed from both alleles in these same embryos (Figure 3B). However, *Airn* is only expressed in slightly older embryos (3 and 4 (Figure 3C)). Hypermethylation of maternal DMR2 (Figure 3D) clearly precedes paternal *Airn* expression in embryos 1 and 2. Hypermethylation of maternal DMR2 also precedes silencing of paternal *Igf2r* in embryonic lineages (embryos 3 and 4). Importantly, the epiblast of embryos 3 and 4 express both alleles of *Igf2r* and paternal *Airn*, suggesting that transcription from both loci can occur on opposite strands of the same paternal chromosome. Analysis with single cell-resolution will be important to support this finding.

Since the *Airn* transcript is 108 kb, we designed amplicons along its length to assess if the entire lncRNA is detectable in embryonic lineages at various developmental stages (Figure 3E). Qualitative RT-PCR indicates that *Airn* transcripts increase in length with developmental progress (Figure 3F). At E7.0, only the 5'-most amplicons are detected while the 3'-most amplicons are also detected in older embryos (Figure 3F). By E9.5, all but the very 3'-most amplicon is detected, and the entire lncRNA is detectable in adult tissue (Figure 3F, +). Although qualitative, these results also suggest that total levels of *Airn* transcripts increase as development proceeds (Figure 3F, compare to *ActB* control).

These findings raise the possibility that maternal DNA methylation spreading is required to inhibit maternal *Airn* transcription. This could explain activation of only the paternal unmethylated allele in the embryo. Furthermore, the difference in *Igf2r* and *Airn* expression between EPI (biallelic *Igf2r* and no *Airn*) and VE (reciprocal imprinting) indicate a distinct mechanism during epiblast differentiation that activates *Airn* (since *Airn* is already expressed in

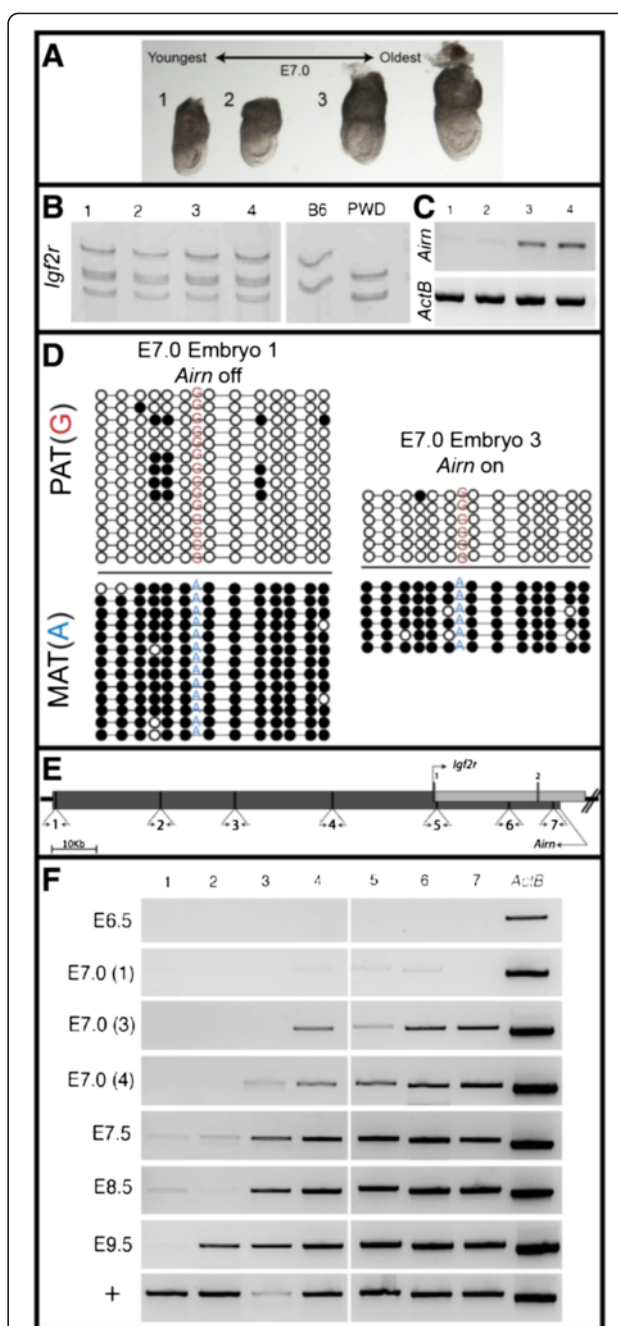


Figure 3 Mid-gastrulation expression and DNA methylation. (A) Four approximately E7.0 embryos from a single litter shown in age order - analyzed for *Igf2r* (B), *Airn* and *ActB* (C) expression as well as DMR2 DNA methylation (D). *Igf2r* is expressed from both alleles in all four embryos but *Airn* is detected only in the two older embryos (3 and 4). DNA methylation has already spread across DMR2 (D) independent of *Airn* expression. Filled circles = methylated cytosine, Open = unmethylated cytosine. (E) Schematic of *Airn* illustrating *Igf2r* start site and locations of primer pairs used in (F). (F) RT-PCR expression analysis from approximately E7.0 embryos 1, 3, 4, as well as other stages and adult kidney RNA highlight progressive expression of *Airn* coordinated with development. Pat, paternal; Mat, maternal; +, kidney cDNA.

VE but the methylation dynamics are the same in EPI-EM and VE-EX). Alternatively, there may be regulation on the paternal allele that initially inhibits *Airn* transcription in epiblast. Either scenario indicates that neither DNA methylation nor *Airn* expression is responsible for silencing paternal *Igf2r* in the epiblast. Taken together, the observation that DNA methylation dynamics are the same in embryonic and extraembryonic tissues but that allelic expression patterns are different, require an embryonic lineage-specific mechanism responsible for establishment of imprinted expression.

Ctcf binding at DMR2

The methylation-sensitive insulator Ctcf participates in chromatin looping at imprinted loci [18-20]. At *Igf2/H19*, Ctcf binds to the unmethylated maternal ICR preventing *Igf2*-enhancer interactions [19,21]. We therefore examined Ctcf expression and binding to DMR2 to determine if it may be involved in regulation of *Igf2r/Airn*. At E6.5, very little Ctcf transcript is detectable in EPI or VE (Figure 4A), but expression is evident at E7.5 in both lineages. Consistent with the absence of transcripts, immunofluorescence showed no/trace nuclear signal at E6.5, while robust nuclear Ctcf is observed at E7.5 (Additional file 2: Figure S2). We confirmed earlier reports of Ctcf expression in blastocysts (both mRNA and protein, Additional file 2: Figure S2), indicating that the locus undergoes dramatic transcriptional regulation during normal development. This dramatic change in Ctcf expression and localization was unexpected and may reflect the important role that the protein plays in maintaining epigenetic regulatory domains. Perhaps Ctcf is required during preimplantation to establish and/or maintain chromatin dynamics established during the first cell lineage decisions (ICM/TE) but is dispensable until the next major lineage decisions are made during gastrulation. This possibility supports the idea that genome-wide epigenetic alterations are required during gastrulation lineage decisions, similar to preimplantation. In the future, conditional deletion strategies may make it feasible to functionally test the requirement of Ctcf in specific tissues during gastrulation.

Ctcf chromatin immunoprecipitation (ChIP) indicates Ctcf binds to DMR2 in both embryonic and extraembryonic E8.5 tissues (Figure 4B). Sequencing of ChIP-PCR products clearly shows allele-specific binding of Ctcf at DMR2 to the unmethylated paternal allele in extraembryonic tissues (Figure 4B). Surprisingly, both alleles are bound by Ctcf in embryonic lineage - although there is a detectable shift toward the paternal allele (compare input and ChIP, Figure 4B). Together, the lack of Ctcf in the epiblast at E6.5 and the biallelic binding of Ctcf at E8.5 suggest that while Ctcf may play a role in maintaining imprinted expression at later stages, it is not involved in the initiation of paternal *Igf2r* silencing

or *Airn* activation in the embryonic lineage during gastrulation.

Differential histone enrichment at DMR2

Allele-specific histone modifications (HMODs) have been shown to correlate with *Igf2r* imprinting in the central nervous system [12,22]. We therefore performed ChIP to examine enrichment of H3K4me3, H3K9me3, and H3K27me3 at DMR1 and DMR2 (Figure 4C). In the embryonic tissue at DMR1, we observe maternal allele-specific enrichment of H3K4me3, as well as paternally biased H3K9me3 and H3K27me3. In the extraembryonic tissues, there is no allele-specific enrichment of H3K4me3 and a weak paternal bias of H3K9me3 and H3K27me3 (Figure 4D).

Similar to binding of Ctcf, we observe allele-specific enrichment of HMODs at DMR2 in extraembryonic tissues but not in chromatin derived from the embryo (Figure 4E). In extraembryonic tissues, the active H3K4me3 mark is greatly enriched on the paternal allele (which expresses *Airn*), and H3K9me3 is enriched on the maternal allele (where *Airn* is silent, Figure 4E). Surprisingly, PRC2-mediated H3K27me3 which has been shown to be required for imprinting at other loci [23] is not enriched on the silent *Igf2r* allele, suggesting that PRC2 does not participate in regulation of the *Airn* locus in extraembryonic cells. In the embryonic tissue however, we find maternal bias of repressive H3K9me3 and H3K27me3 (although not as highly enriched as extraembryonic cells).

Together these data indicate distinct lineage- and allele-specific enrichment of HMODs occur at DMR1 and DMR2. Strikingly, there is limited allele-specific enrichment in the extraembryonic tissue at DMR1 at E8.5, even though *Igf2r* is imprinted at least 2 days prior. This indicates differential methylation (Additional file 1: Figure S1), and HMODs at DMR1 (Figure 4D) may play a secondary role in the imprinting of *Igf2r*.

Dramatic allele-specific binding/enrichment of Ctcf, H3K4me3, and H3K9me3 is present at DMR2 in extraembryonic tissues suggesting that these chromatin modifications are established at an earlier stage. Although biased, DMR2 allele-specific chromatin modifications are not fully established in embryonic lineages by E8.5. While it is possible that multiple cell types of the E8.5 embryo contain distinct allele-specific enrichment, it is more likely that the allele-specific modifications are not yet fully established - particularly since imprinted expression of *Igf2r* and *Airn* is initiated only 24 h prior at E7.5.

Conclusions

Our results indicate lineage-specific regulation of *Igf2r/Airn* imprinted expression during gastrulation. We identify the precise ICR boundary as well as spreading of

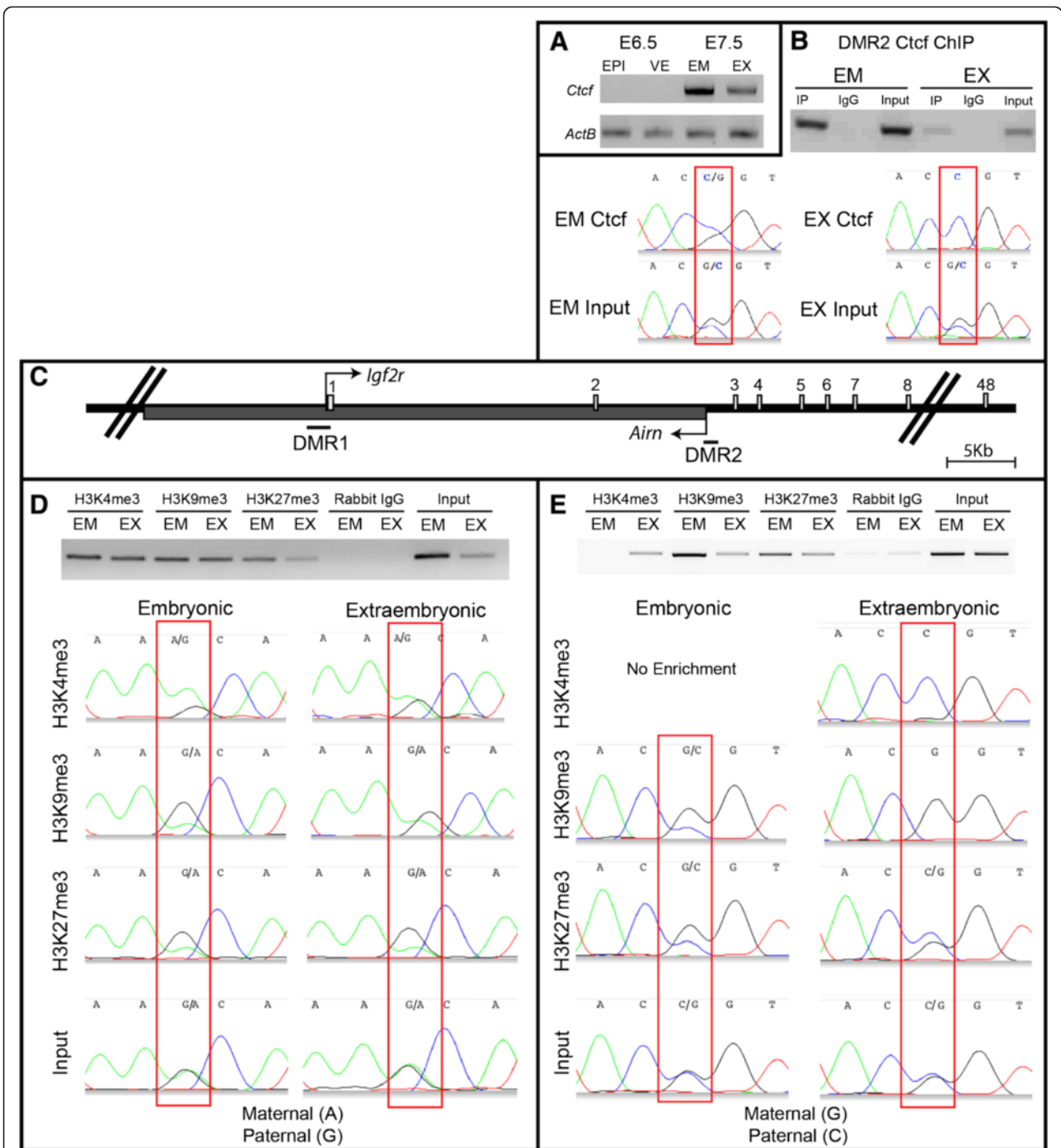


Figure 4 Chromatin modification at DMR2. (A) *Ctcf* RT-PCR indicates no/trace expression of *Ctcf* in both EPI and VE at E6.5. *Ctcf* is expressed in both lineages at E7.5. (B) Ctf ChIP at DMR2 with E8.5 chromatin shows binding in both embryonic and extraembryonic tissues. Sequencing of ChIP-PCR products indicates allele-specific Ctf enrichment of the paternal allele in the extraembryonic tissue, but both alleles are bound in embryonic tissue (although biased toward the paternal allele). (C) Illustration of DMR1 and DMR2 in relation to the start sites of *Igf2r* and *Airn*. (D-E) H3K4me3, H3K9me3, and H3K27me3 ChIP-PCR of DMR1 and DMR2 on E8.5 chromatin. Sequencing of ChIP-PCR products shows allele-specific enrichment in embryonic tissues at DMR1 and extraembryonic tissue at DMR2. The position of the polymorphism is boxed in red on each electropherogram. DMR1 (A, maternal; G, paternal). DMR2 (G, maternal B6; C, paternal PWD).

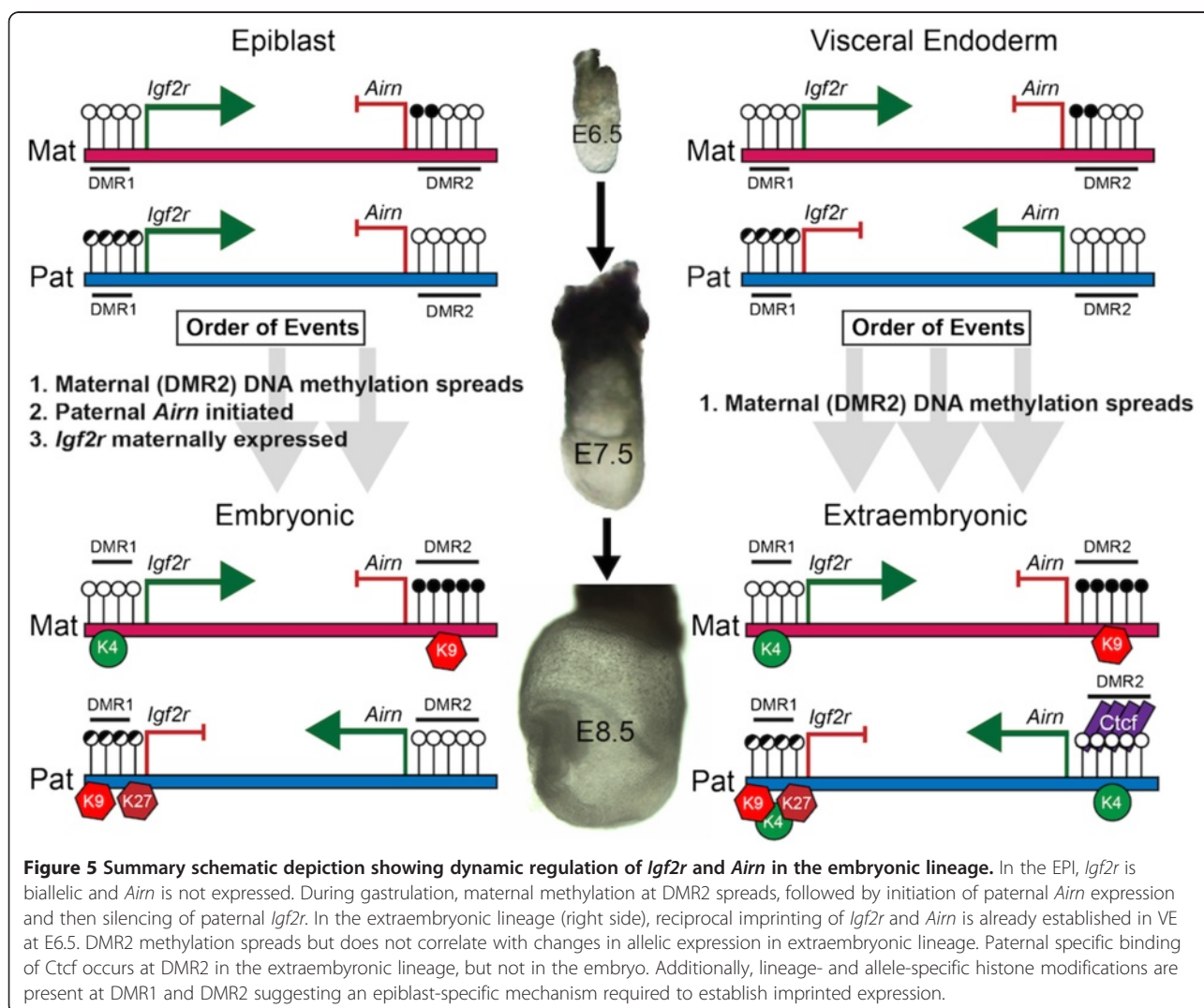
DNA methylation at *Igf2r* DMR2 during gastrulation (summarized in Figure 5). At E6.5, both EPI and VE lineages maintain maternal ICR methylation. However, the epiblast expresses biallelic *Igf2r* and no *Airn*. In contrast, both genes are imprinted in visceral endoderm of the same embryos. Therefore, there must exist mechanistic distinctions that result in imprinted expression in VE but not in EPI at E6.5 - possibly lineage-specific expression of chromatin binding/modifying genes established during preimplantation inner cell mass/trophectoderm differentiation. Our data also show locus-specific methylation spreading occurs during gastrulation in both lineages. While spreading of ICR methylation is known to occur during preimplantation, it has not been previously shown during gastrulation at imprinted loci, indicating that DNMTs are targeted to the locus specifically during these stages. The lineage differences in imprinted expression documented herein are remarkably similar to patterns of X-inactivation. Imprinted X-inactivation is established in

extraembryonic cells during preimplantation, while stochastic X-inactivation occurs in the embryo only after gastrulation commences. Furthermore, non-coding RNAs help induce silencing in *cis* of the inactive X chromosome (reviewed in [24]) suggesting that *Airn* may function in a similar fashion at the *Igf2r* locus. The results presented here support the possibility that regulation of *Igf2r/Airn* (and other imprinted loci) and X-inactivation may utilize a common mechanism. Identification of the lineage-specific machinery that enables epigenetic changes specifically in the embryo will lead to a more complete understanding of the events underlying normal gastrulation and epigenetic reprogramming.

Methods

Tissues

All procedures were approved by the University of Massachusetts Amherst Institutional Animal Care and Use Committee. Embryos were derived from C57BL/6J



(JAX 000664) and PWD/PhJ (JAX004660). Reciprocal F1 embryos were derived from female C75BL/6J Chr17^{PWD/PhJ/ForeJ} (JAX 005267) and C57BL/6J (JAX 000664) males. Embryos were microdissected for DNA and mRNA extraction. MII oocytes were collected from superovulated B6D2F1 females to confirm ICR methylation.

Imprinted expression analysis

Total RNA was isolated using the Roche High Pure RNA Isolation Kit (Roche 11828665001, Roche, Basel, Switzerland). cDNA synthesis was performed using Bio-Rad iScript cDNA synthesis kit (170-8891) (Bio-Rad Laboratories, Inc., Hercules, USA). Primers for allele-specific expression and full-length *Airn* RT-PCR are shown in Additional file 3: Table S1. *Airn* restriction fragment length polymorphism (RFLP) was performed with *Ava*I. SSCP was performed on *Igf2r* PCR products with MDE polyacrylamide gel electrophoresis (Lonza 50620, Lonza Group, Basel, Switzerland). PCR products were visualized by ethidium bromide illumination and imaging.

Bisulfite sequencing

Bisulfite sequencing was performed as previously described [25] with the primers provided in Additional file 3: Table S1.

Chromatin immunoprecipitation

E8.5 C75BL/6JxPWD/PhJ-F1 embryos were dissected, and embryonic and extraembryonic tissues were separated and immediately processed using instructions in either ChIP-IT High Sensitivity kit (Active Motif 53040, Active Motif, Carlsbad, USA) or Zymo-Spin ChIP kit (Zymo D5210, Zymo Research, Irvine, USA). Samples were kept on ice and either sonicated twice for 20 s with the Heat Systems Sonicator/Ultra Processor (output 3) or sonicated for 30 s on/20 s off for 3 min using a cup horn adaptor for the QSonica A500 (QSonica, Newtown, USA). After sonication, 1% of each sample was removed for input control. Immunoprecipitation was carried out using Active Motif Protein G agarose beads or magnetic Protein G Dynabeads (10003D, Life Technologies, Carlsbad, USA) and either anti-Ctcf (Santa Cruz sc-28198, Santa Cruz Biotechnology, Inc., Dallas, USA), anti-H3K4me3 (Abcam ab8580, Abcam, Cambridge, UK), anti-H3K9me3 (Abcam ab8898), or H3K27me3 (Millipore 07-449, Millipore, Billerica, USA) along with normal rabbit IgG. After antibody incubation, beads were washed and DNA was collected using manufacturer's protocol. ChIP-PCR primers found in Additional file 3: Table S1 (Additional file 4: Supplemental Methods).

Additional files

Additional file 1: Figure S1. DMR1 methylation. (A) Schematic of the mouse *Igf2r/Airn* locus: transcription start sites (bent arrows), *Igf2r* exons (boxes), and location for DMR1 and DMR2. One amplicon spanning 12 CpG dinucleotides were analyzed. (B) Methylation of adult F1 brain and liver. Note DMR1 methylation levels are variable in a tissue specific context. (C) Embryo DMR1 methylation at E6.5, E7.0, and E7.5. Levels of DMR1 methylation are comparable to the adult brain. Maternal = A, Paternal = G.

Additional file 2: Figure S2. CTCF immunofluorescence. (A, A') No/trace nuclear CTCF signal is detectable in EPI or VE in E6.5 embryos. Decidual cells show robust nuclear CTCF (FITC) serving as a positive control. (B, B') Robust nuclear CTCF is observed at E7.5 in all cells. (C, C') Nuclear staining is observed in the blastocyst at E3.5. CTCF shown in FITC/green, nuclear counterstain DAPI shown in blue. Scale = 100 μ m.

Additional file 3: Table S1. Primers for allele-specific expression and full-length *Airn* RT-PCR.

Additional file 4: Supplemental Methods.

Abbreviations

ChIP: chromatin immunoprecipitation; DMR: differentially methylated region; DNMT: DNA methyltransferase; EM: embryonic; EPI: epiblast; ES cells: embryonic stem cells; EX: extraembryonic; H3K27me3: histone H3 lysine 27 tri-methylation; H3K4me3: histone H3 lysine 4 tri-methylation; H3K9me3: histone H3 lysine 9 tri-methylation; HMODs: histone modifications; ICM: inner cell mass; ICR: imprinting control region; lncRNA: long non-coding RNA; PRC2: Polycomb Repressive Complex 2; RFLP: restriction fragment length polymorphism; SSCP: single-strand conformation polymorphism; TE: trophoctoderm; VE: visceral endoderm; Xi: X-inactivation.

Competing interests

The authors declare that they have no competing interests.

Authors' contributions

CM performed the embryo dissections and performed all molecular biology experiments (RT-PCR-RFLP, ChIP, IF) and drafted the manuscript with JM. AB performed the initial RT-PCR-RFLP to identify the change in *Igf2r* imprinting status. KDT participated in critical discussion when designing the study and helped to revise the manuscript. JM conceived of the study, and participated in its design and coordination and helped to draft the final manuscript. All authors read and approved the final manuscript.

Acknowledgements

CM was supported by ICE-NSF-IGERT (Grant DGE-0654128). The work was supported in part by NSF RCN grant 1049849 and March of Dimes Grant 6-FY11-367 to JM.

Received: 21 November 2014 Accepted: 13 February 2015

Published online: 14 March 2015

References

- Barlow DP. Genomic imprinting: a mammalian epigenetic discovery model. *Annu Rev Genet.* 2011;45:379–403.
- Bartolomei MS. Genomic imprinting: employing and avoiding epigenetic processes. *Genes Dev.* 2009;23:2124–33.
- Lindroth AM, Park YJ, McLean CM, Dokshin GA, Persson JM, Herman H, et al. Antagonism between DNA and H3K27 methylation at the imprinted *Rasgrf1* locus. *PLoS Genet.* 2008;4:e1000145.
- Nagano T, Mitchell JA, Sanz LA, Pauler FM, Ferguson-Smith AC, Feil R, et al. The Air noncoding RNA epigenetically silences transcription by targeting G9a to chromatin. *Science.* 2008;322:1717–20.
- Zwart R, Sleutels F, Wutz A, Schinkel AH, Barlow DP. Bidirectional action of the *Igf2r* imprint control element on upstream and downstream imprinted genes. *Genes Dev.* 2001;15:2361–6.
- Wutz A, Barlow DP. Imprinting of the mouse *Igf2r* gene depends on an intronic CpG island. *Mol Cell Endocrinol.* 1998;140:9–14.
- Sleutels F, Barlow DP. Investigation of elements sufficient to imprint the mouse *Air* promoter. *Mol Cell Biol.* 2001;21:5008–17.

8. Latos PA, Pauler FM, Koerner MV, Senergin HB, Hudson QJ, Stocsits RR, et al. Airn transcriptional overlap, but not its lncRNA products, induces imprinted Igf2r silencing. *Science*. 2012;338:1469–72.
9. Santoro F, Mayer D, Klement RM, Warczok KE, Stukalov A, Barlow DP, et al. Imprinted Igf2r silencing depends on continuous Airn lncRNA expression and is not restricted to a developmental window. *Development*. 2013;140:1184–95.
10. Lerchner W, Barlow DP. Paternal repression of the imprinted mouse Igf2r locus occurs during implantation and is stable in all tissues of the post-implantation mouse embryo. *Mech Dev*. 1997;61:141–9.
11. Szabo PE, Mann JR. Allele-specific expression and total expression levels of imprinted genes during early mouse development: implications for imprinting mechanisms. *Genes Dev*. 1995;9:3097–108.
12. Yamasaki Y, Kayashima T, Soejima H, Kinoshita A, Yoshiura K, Matsumoto N, et al. Neuron-specific relaxation of Igf2r imprinting is associated with neuron-specific histone modifications and lack of its antisense transcript Air. *Hum Mol Genet*. 2005;14:2511–20.
13. Latos PA, Stricker SH, Steenpass L, Pauler FM, Huang R, Senergin BH, et al. An in vitro ES cell imprinting model shows that imprinted expression of the Igf2r gene arises from an allele-specific expression bias. *Development*. 2009;136:437–48.
14. Li E, Beard C, Jaenisch R. Role for DNA methylation in genomic imprinting. *Nature*. 1993;366:362–5.
15. Wutz A, Smrzka OW, Schweifer N, Schellander K, Wagner EF, Barlow DP. Imprinted expression of the Igf2r gene depends on an intronic CpG island. *Nature*. 1997;389:745–9.
16. Thorvaldsen JL, Duran KL, Bartolomei MS. Deletion of the H19 differentially methylated domain results in loss of imprinted expression of H19 and Igf2. *Genes Dev*. 1998;12:3693–702.
17. Stoger R, Kubicka P, Liu CG, Kafri T, Razin A, Cedar H, et al. Maternal-specific methylation of the imprinted mouse Igf2r locus identifies the expressed locus as carrying the imprinting signal. *Cell*. 1993;73:61–71.
18. Murrell A, Heeson S, Reik W. Interaction between differentially methylated regions partitions the imprinted genes Igf2 and H19 into parent-specific chromatin loops. *Nat Genet*. 2004;36:889–93.
19. Engel N, Thorvaldsen JL, Bartolomei MS. CTCF binding sites promote transcription initiation and prevent DNA methylation on the maternal allele at the imprinted H19/Igf2 locus. *Hum Mol Genet*. 2006;15:2945–54.
20. Zhang H, Niu B, Hu JF, Ge S, Wang H, Li T, et al. Interruption of intrachromosomal looping by CCCTC binding factor decoy proteins abrogates genomic imprinting of human insulin-like growth factor II. *J Cell Biol*. 2011;193:475–87.
21. Pant V, Mariano P, Kanduri C, Mattsson A, Lobanenko V, Heuchel R, et al. The nucleotides responsible for the direct physical contact between the chromatin insulator protein CTCF and the H19 imprinting control region manifest parent of origin-specific long-distance insulation and methylation-free domains. *Genes Dev*. 2003;17:586–90.
22. Fournier C, Goto Y, Ballestar E, Delaval K, Hever AM, Esteller M, et al. Allele-specific histone lysine methylation marks regulatory regions at imprinted mouse genes. *Embo J*. 2002;21:6560–70.
23. Mager J, Montgomery ND, de Villena FP, Magnuson T. Genome imprinting regulated by the mouse Polycomb group protein Eed. *Nat Genet*. 2003;33:502–7.
24. Yang L, Froberg JE, Lee JT. Long noncoding RNAs: fresh perspectives into the RNA world. *Trends Biochem Sci*. 2014;39:35–43.
25. Zhang K, Haversat JM, Mager J. CTR9/PAF1c regulates molecular lineage identity, histone H3K36 trimethylation and genomic imprinting during preimplantation development. *Dev Biol*. 2013;383:15–27.

Submit your next manuscript to BioMed Central and take full advantage of:

- Convenient online submission
- Thorough peer review
- No space constraints or color figure charges
- Immediate publication on acceptance
- Inclusion in PubMed, CAS, Scopus and Google Scholar
- Research which is freely available for redistribution

Submit your manuscript at
www.biomedcentral.com/submit

