

2010

# The genome of *Geobacter bemidjensis*, exemplar for the subsurface clade of *Geobacter* species that predominate in Fe(III)-reducing subsurface environments

Muktak Aklujar

*University of Massachusetts Amherst*

Nelson D. Young

*University of Massachusetts Amherst*

Dawn Holmes

*University of Massachusetts Amherst*

Milind Chavan

*University of Massachusetts Amherst*

Carla Risso

*University of Massachusetts Amherst*

*See next page for additional authors*

Follow this and additional works at: [https://scholarworks.umass.edu/micro\\_faculty\\_pubs](https://scholarworks.umass.edu/micro_faculty_pubs)

## Recommended Citation

Aklujar, Muktak; Young, Nelson D.; Holmes, Dawn; Chavan, Milind; Risso, Carla; Kiss, Hajnalka E.; Han, Cliff S.; Land, Miriam L.; and Lovley, Derek R., "The genome of *Geobacter bemidjensis*, exemplar for the subsurface clade of *Geobacter* species that predominate in Fe(III)-reducing subsurface environments" (2010). *BMC Genomics*. 316.  
<https://doi.org/10.1186/1471-2164-11-490>

This Article is brought to you for free and open access by the Microbiology at ScholarWorks@UMass Amherst. It has been accepted for inclusion in Microbiology Department Faculty Publication Series by an authorized administrator of ScholarWorks@UMass Amherst. For more information, please contact [scholarworks@library.umass.edu](mailto:scholarworks@library.umass.edu).

---

**Authors**

Muktak Aklujar, Nelson D. Young, Dawn Holmes, Milind Chavan, Carla Risso, Hajnalka E. Kiss, Cliff S. Han, Miriam L. Land, and Derek R. Lovley

RESEARCH ARTICLE

Open Access

# The genome of *Geobacter bemidjensis*, exemplar for the subsurface clade of *Geobacter* species that predominate in Fe(III)-reducing subsurface environments

Muktak Aklujkar<sup>1\*</sup>, Nelson D Young<sup>1</sup>, Dawn Holmes<sup>1</sup>, Milind Chavan<sup>1</sup>, Carla Risso<sup>1</sup>, Hajnalka E Kiss<sup>2</sup>, Cliff S Han<sup>2</sup>, Miriam L Land<sup>3</sup>, Derek R Lovley<sup>1</sup>

## Abstract

**Background:** *Geobacter* species in a phylogenetic cluster known as subsurface clade 1 are often the predominant microorganisms in subsurface environments in which Fe(III) reduction is the primary electron-accepting process. *Geobacter bemidjensis*, a member of this clade, was isolated from hydrocarbon-contaminated subsurface sediments in Bemidji, Minnesota, and is closely related to *Geobacter* species found to be abundant at other subsurface sites. This study examines whether there are significant differences in the metabolism and physiology of *G. bemidjensis* compared to non-subsurface *Geobacter* species.

**Results:** Annotation of the genome sequence of *G. bemidjensis* indicates several differences in metabolism compared to previously sequenced non-subsurface *Geobacteraceae*, which will be useful for *in silico* metabolic modeling of subsurface bioremediation processes involving *Geobacter* species. Pathways can now be predicted for the use of various carbon sources such as propionate by *G. bemidjensis*. Additional metabolic capabilities such as carbon dioxide fixation and growth on glucose were predicted from the genome annotation. The presence of different dicarboxylic acid transporters and two oxaloacetate decarboxylases in *G. bemidjensis* may explain its ability to grow by disproportionation of fumarate. Although benzoate is the only aromatic compound that *G. bemidjensis* is known or predicted to utilize as an electron donor and carbon source, the genome suggests that this species may be able to detoxify other aromatic pollutants without degrading them. Furthermore, *G. bemidjensis* is auxotrophic for 4-aminobenzoate, which makes it the first *Geobacter* species identified as having a vitamin requirement. Several features of the genome indicated that *G. bemidjensis* has enhanced abilities to respire, detoxify and avoid oxygen.

**Conclusion:** Overall, the genome sequence of *G. bemidjensis* offers surprising insights into the metabolism and physiology of *Geobacteraceae* in subsurface environments, compared to non-subsurface *Geobacter* species, such as the ability to disproportionate fumarate, more efficient oxidation of propionate, enhanced responses to oxygen stress, and dependence on the environment for a vitamin requirement. Therefore, an understanding of the activity of *Geobacter* species in the subsurface is more likely to benefit from studies of subsurface isolates such as *G. bemidjensis* than from the non-subsurface model species studied so far.

\* Correspondence: muktak@microbio.umass.edu

<sup>1</sup>University of Massachusetts Amherst, Amherst, MA 01003, USA

Full list of author information is available at the end of the article

## Background

*Geobacter bemidjensis* is a member of the *Geobacteraceae*, a family of Fe(III)-respiring *Deltaproteobacteria* that are of interest for their role in cycling of carbon and metals in aquatic sediments and subsurface environments as well as the bioremediation of organic- and metal-contaminated groundwater and the harvesting of electricity from complex organic matter [1,2]. It was isolated from subsurface sediments in Bemidji, Minnesota, near a site where aromatic hydrocarbons were being degraded naturally [3]. *G. bemidjensis* is a member of the phylogenetic cluster designated subsurface clade 1, which predominates in a diversity of subsurface environments in which dissimilatory Fe(III) reduction is an important process [4]. Environmental proteomic studies have demonstrated that *Geobacter* species closely related to *G. bemidjensis* were metabolically active during the *in situ* bioremediation of uranium-contaminated groundwater [5].

Preliminary studies have suggested that genome-scale metabolic modeling of *Geobacter* species [6,7] may aid in predicting the response of subsurface *Geobacter* species to subsurface bioremediation strategies [8,9]. However, it is not known whether the metabolic potential of subsurface *Geobacter* species is essentially the same as that of non-subsurface *Geobacter* species, or significantly different. Therefore, comparative analysis of the genome of a representative of the subsurface clade 1 *Geobacter* species with the curated genomes of two non-subsurface *Geobacter* species, *Geobacter sulfurreducens* and *Geobacter metallireducens* [10,11], was carried out to improve predictive modeling of the responses of *Geobacteraceae* to efforts to stimulate bioremediation of organic and metal contaminants in the subsurface.

## Results and Discussion

### Contents of the *G. bemidjensis* genome

The automated annotation process identified 4040 protein-coding genes and 76 ribonucleic acid (RNA) genes in the genome of 4615150 bp. During manual curation, 56 genes were discarded, 40 genes were reannotated as pseudogenes, and another 79 protein-coding genes, 28 pseudogenes, and 778 non-protein-coding features were identified. Protein sequence alignments demonstrated that 27 pseudogenes were frameshifted within runs of five or more identical bases, where DNA replication is most error-prone, and seven of these are polymorphisms where the minor alleles contain no frameshift, indicating a subpopulation of cells that can produce functional proteins from these genes (Additional file 1: Table S1). Of the 4023 intact protein-coding genes in the *G. bemidjensis* genome, 148 hypothetical proteins (3.6%) have no match in any other genome, including that of

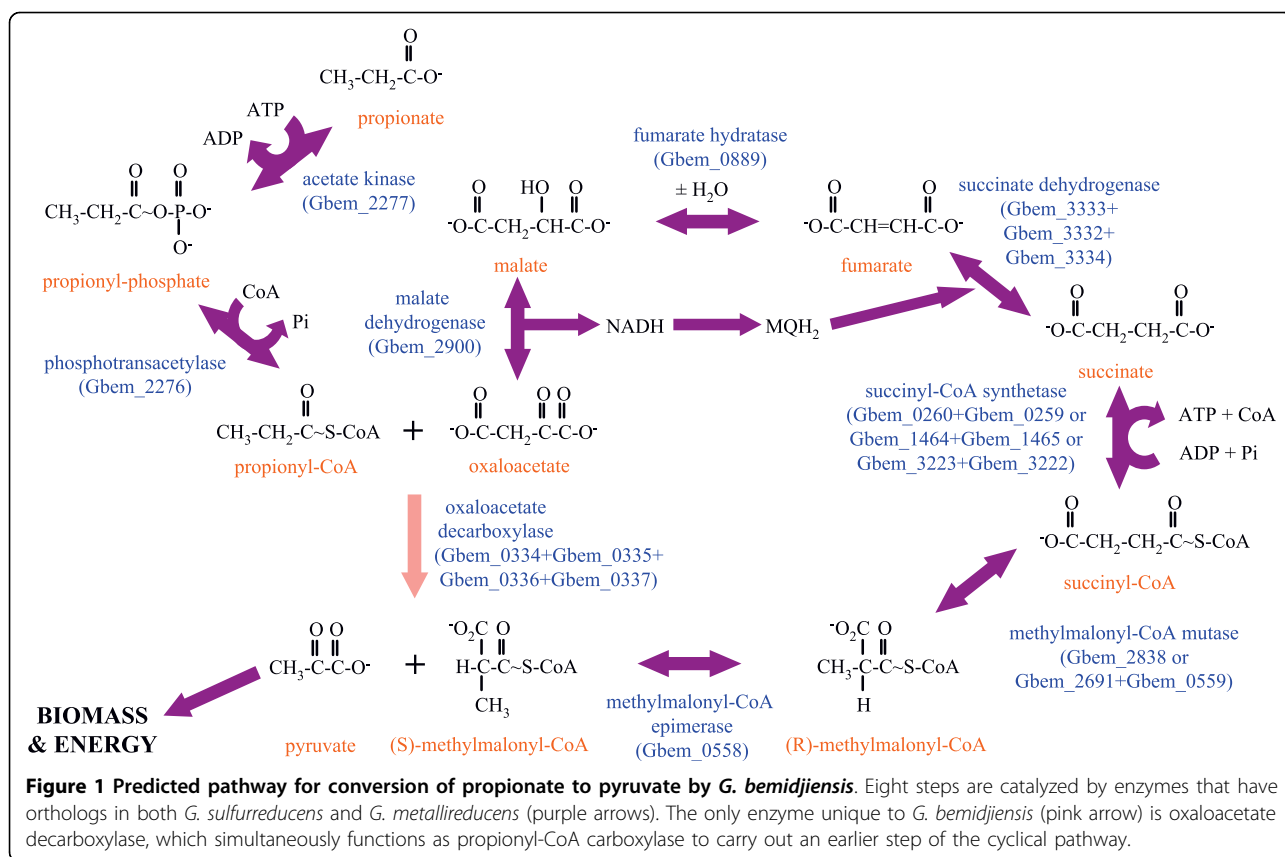
*Geobacter* sp. M21; a further 87 conserved hypothetical proteins were found only in these two closely related genomes.

### Metabolism of pyruvate

An appropriate place to begin to compare metabolism between the subsurface exemplar *G. bemidjensis* and the representative non-subsurface species *G. sulfurreducens* and *G. metallireducens* is with the central metabolic reactions that interconvert pyruvate and acetyl-CoA. Like other *Geobacteraceae*, *G. bemidjensis* possesses two sets of genes encoding pyruvate dehydrogenase complexes (Gbem\_2257 and Gbem\_2251-Gbem\_2250; Gbem\_0459-Gbem\_0461), which irreversibly convert pyruvate to acetyl-CoA. The ability of *G. sulfurreducens* to reverse this reaction and derive biomass from acetyl-CoA has been attributed to a homodimeric pyruvate:ferredoxin/flavodoxin oxidoreductase [12], for which homologs exist in all *Geobacteraceae* including *G. bemidjensis* (Gbem\_0209). *G. bemidjensis* has an additional pyruvate:ferredoxin oxidoreductase (Gbem\_4034), more closely related to those of sulfate-reducing bacteria. In addition to gluconeogenesis and oxidative decarboxylation to acetyl-CoA, a third fate of pyruvate in *G. bemidjensis* may be oxidative decarboxylation to acetate by a putative quinone-reducing pyruvate decarboxylase (Gbem\_0287) that is 32% identical to the *E. coli* enzyme [13]. Thus, metabolism of pyruvate may be more complex in *G. bemidjensis* than in non-subsurface *Geobacter* species.

### Metabolism of propionate

*G. bemidjensis* and *G. metallireducens* utilize propionate as an electron donor, whereas *G. sulfurreducens* cannot. Analysis of the genome suggests that *G. bemidjensis* utilizes propionate by converting it to pyruvate in ten steps (Figure 1): (1-2) activation to propionyl-CoA by the same enzymes that activate acetate; (3) carboxylation to (S)-methylmalonyl-CoA by a biotin-dependent propionyl-CoA carboxyltransferase (Gbem\_0335) that is 51% identical to the 12 S subunit of the *Propionibacterium freudenreichii* methylmalonyl-CoA:pyruvate carboxyltransferase enzyme complex [14]; (4-5) epimerization and rearrangement to succinyl-CoA; (6) hydrolysis to succinate; (7-9) oxidation to oxaloacetate; and (10) decarboxylation to pyruvate by an oxaloacetate decarboxylase (Gbem\_0334) that is 60% identical to the 5 S subunit of the *P. freudenreichii* methylmalonyl-CoA:pyruvate carboxyltransferase complex [14], with concomitant transfer of the carboxyl group to propionyl-CoA (see step 3 above). The carboxyltransferase reaction, possibly involving a conserved hypothetical protein (Gbem\_0336) and a biotin attachment domain protein (Gbem\_0337) encoded within the same predicted



operon as the two enzymes, avoids the energetic cost of 1 ATP associated with other biotin-dependent carboxylations of acyl-CoA substrates. The energy recovered from hydrolysis of succinyl-CoA to succinate may be used for the initial activation of propionate, either in the form of ATP or possibly through direct transfer of CoA by one of several uncharacterized acyl-CoA:carboxylate CoA transferases (Gbem\_1430, Gbem\_1439, Gbem\_3573). This energy-efficient pathway contrasts with the proposed pathway in the non-subsurface species *G. metallireducens* [10,15], in which no energy is recovered from thioester hydrolysis of propionyl-CoA by 2-methylcitrate synthase. Accordingly, reliable predictions of the metabolic activity of *Geobacter* species in subsurface environments amended with propionate will depend on models based on *G. bemidjiensis* rather than *G. metallireducens*.

#### Fatty acid metabolism

The *G. bemidjiensis* genome encodes many enzymes of acyl-CoA metabolism (Additional file 2: Table S2). This multiplicity of genes suggests that in addition to its known short-chain organic acid electron donors (butyrate, isobutyrate and valerate), *G. bemidjiensis* may also be able to utilize longer fatty acids as sources of carbon

and electrons. Indeed, *G. bemidjiensis* and the other genomes of subsurface *Geobacter* species possess a very-long-chain fatty acyl-CoA dehydrogenase (*fadE* Gbem\_2128) 50% identical to that of *Bacillus subtilis* [16], which is absent from *G. sulfurreducens* and *G. metallireducens*. Thus, the metabolism of fatty acids by subsurface *Geobacter* species may be better understood by examining *G. bemidjiensis* rather than non-subsurface relatives.

#### Growth of *G. bemidjiensis* by disproportionation of fumarate

*G. bemidjiensis*, like *G. sulfurreducens*, can utilize fumarate as an electron acceptor in combination with acetate and other electron donors [3]. Consistent with its previously described ability to utilize malate as an electron donor and carbon source, *G. bemidjiensis* also grows when provided with only fumarate (Figure 2a), as was previously reported for *Geobacter bremensis* [17]. Existing metabolic models of (non-subsurface) *Geobacter* species do not include this capability; therefore, we examined it more closely. Chromatographic analysis of culture filtrates indicates that 79% of the supply of fumarate serves as electron acceptor and is excreted as succinate, implying that another 13% of the fumarate is



completely oxidized to carbon dioxide (Figure 2b). Biomass is inferred to derive from the remaining 8% of the fumarate supply. A small amount of malate is transiently excreted when consumption of fumarate is steepest (Figure 2b). Unlike *Desulfovibrio vulgaris* [18] and *Rhodospirillum rubrum* [19], *G. bemidjiensis* does not excrete acetate, even at early stages (Figure 2b), indicating that complete oxidation of fumarate is energetically more favourable than partial oxidation to acetyl-CoA followed by substrate-level phosphorylation.

Either the sodium/fumarate symporter DctA (Gbem\_3225) that is 61% identical to the *Salmonella typhimurium* transporter [20] or the proton/fumarate symporter complex DctPQM (Gbem\_2659-Gbem\_2661) with 40% to 63% sequence identity to characterized homologs in *Rhodobacter capsulatus* [21] may be a prerequisite for disproportionation of fumarate. Both transporters, which are absent from *G. sulfurreducens*, allow import of fumarate without the concomitant export of succinate required by the dicarboxylate exchange transporter DcuB (Gbem\_2921, orthologous to GSU2751). Notably, the *dcuB* and *dctA* genes are each located 3' of a pair of genes encoding a periplasmic substrate-binding sensor histidine kinase and response regulator that are highly similar (Figure 2c); a third pair is located 5' of a phosphate-selective porin (Gbem\_4037, orthologous to Gmet\_1042). The three sensor kinases (Gbem\_2923; Gbem\_3228; Gbem\_4039) are 47% to 56% identical and the three response regulators (Gbem\_2922; Gbem\_3227; Gbem\_4038) are 65% to 69% identical, suggesting that *G. bemidjiensis* has developed parallel signalling pathways possibly linked to dicarboxylate transport.

In *D. vulgaris*, oxidation of fumarate proceeds through the decarboxylating malate oxidoreductase reaction (B. Giles and J. Wall, personal communication), but it would be surprising if this were the predominant pathway in *G. bemidjiensis* (Figure 2d). When *G. sulfurreducens* respire fumarate, the activity of its two malate oxidoreductases (NADP-dependent *maeB* GSU1700 and NAD-dependent *mleA* GSU2308) must be kept much lower than that of malate dehydrogenase, which converts malate to oxaloacetate, because the equal exchange of succinate for fumarate by DcuB requires that any malate that is decarboxylated to pyruvate must be replaced by carboxylation of pyruvate to oxaloacetate at the expense of one ATP, which is prohibitive [12]. *G. bemidjiensis* possesses three *maeB* genes, all closely related to GSU1700, and no *mleA* gene. It is possible that one or more of these isozymes are upregulated during disproportionation of fumarate. However, complete oxidation of fumarate through acetyl-CoA using the malate oxidoreductases rather than malate dehydrogenase would result in NADH and NADPH being produced in a ratio of 3:2 rather than 4:1, requiring rerouting of

reducing equivalents to meet energy demand. A more reasonable hypothesis is that conversion of fumarate to pyruvate is accomplished through decarboxylation of oxaloacetate by two parallel pathways (Figure 2d; gene diagrams in Figure 2e).

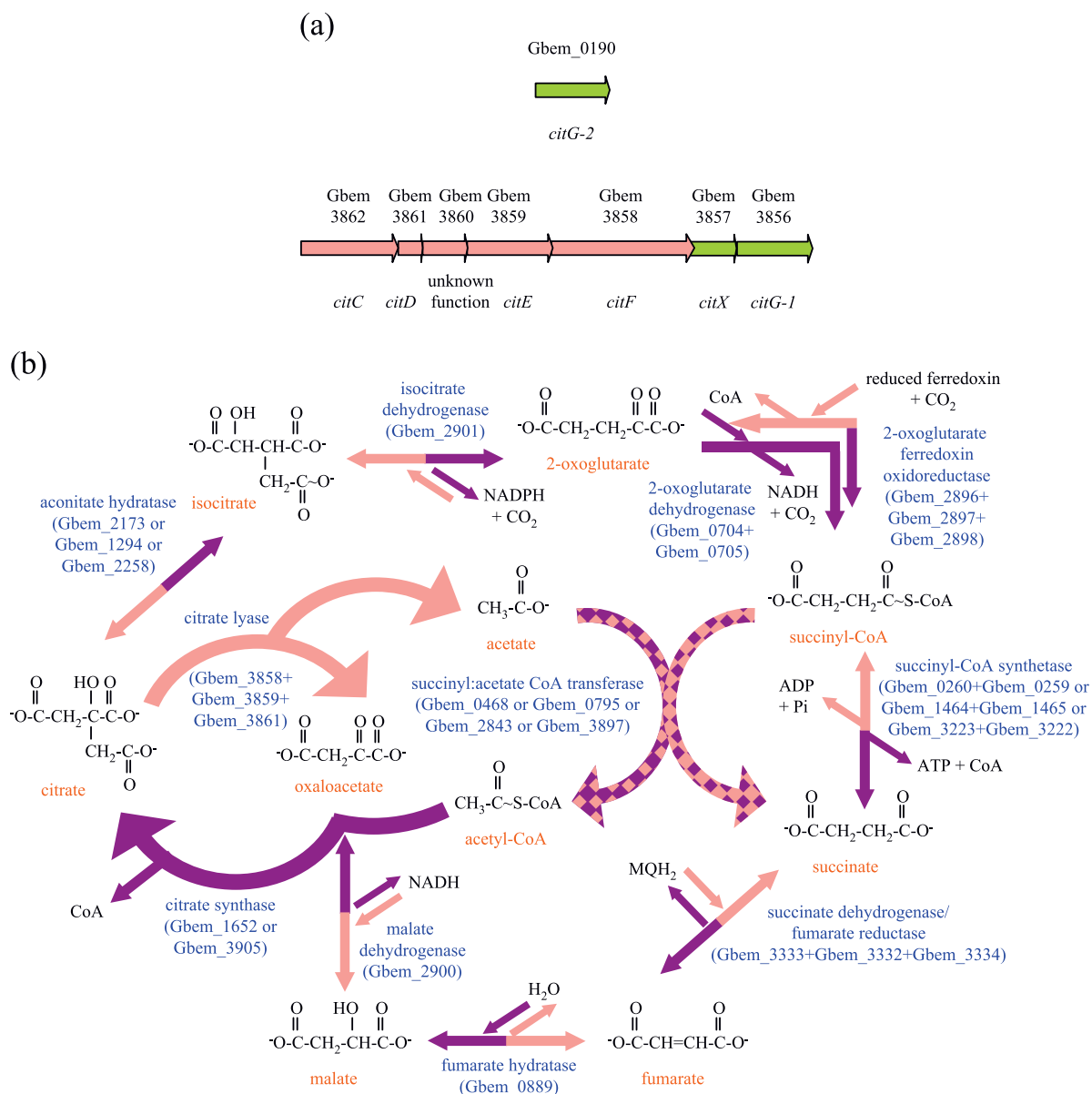
One oxaloacetate decarboxylase complex transfers the carboxyl group to propionyl-CoA as detailed above, forming (S)-methylmalonyl-CoA. In contrast with this same enzyme complex's predicted cyclic involvement in oxidation of propionate to pyruvate (see above, Figure 1), its catalysis of this step in the fumarate oxidation pathway requires that (S)-methylmalonyl-CoA be recycled to propionyl-CoA by methylmalonyl-CoA decarboxylase (Gbem\_0684) (Figure 2d). The other oxaloacetate decarboxylase (*oadA* Gbem\_1454) is 60% identical to the catalytic subunit of the sodium-translocating oxaloacetate decarboxylase of *Klebsiella pneumoniae* [22]. No homologs of the other two subunits were found in *G. bemidjiensis*, indicating that decarboxylation of oxaloacetate is not coupled to a sodium pump.

The malate oxidoreductase and oxaloacetate decarboxylase pathways also account for the ability of *G. bemidjiensis* to grow with malate and succinate as sources of carbon and electrons. Thus, the genome annotation of *G. bemidjiensis* offers insight into its unique capability to metabolize dicarboxylic acids without excreting acetate, which could not be predicted correctly from studies of either the non-subsurface *Geobacter* genomes or non-*Geobacter* species.

#### Possible carbon dioxide fixation via citrate lyase

Addition of acetate to the subsurface selectively stimulates the growth of *Geobacteraceae*, which derive electrons by conversion of acetate to carbon dioxide through the TCA cycle [23]. The presence of a *citCDEFXG* gene cluster (Figure 3a) encoding the citrate lyase enzyme in *G. bemidjiensis* (Gbem\_3862-Gbem\_3856) suggests that this species might also operate the TCA cycle in reverse, fixing two molecules of carbon dioxide and generating acetate (Figure 3b). This gene cluster is not found in the genomes of the non-subsurface species *G. sulfurreducens* and *G. metallireducens*. Preliminary data indicate that *G. bemidjiensis* can grow on Fe(III) oxides plus hydrogen, without any carbon source other than carbon dioxide (D. Holmes and C. Risso, unpublished), although the involvement of citrate lyase remains to be established.

A reverse TCA cycle requires enzymes capable of carrying out two carboxylations: conversion of succinyl-CoA to 2-oxoglutarate and conversion of 2-oxoglutarate to isocitrate (Figure 3b). The first of these conversions has been inferred from a carbon flux analysis study of *G. metallireducens* [24] and may be attributed to 2-oxoglutarate:ferredoxin oxidoreductase (Gbem\_2896-Gbem\_2899). The second conversion may be catalyzed



**Figure 3 Carbon dioxide fixation in *G. bemidjensis*.** (a) The citrate lyase gene cluster and separately located gene Gbem\_0190; some components are unique to *G. bemidjensis* (pink arrows) and others have orthologs in *G. sulfurreducens* (green arrows). The catalytic subunits are encoded by *citEF*, the acyl carrier protein by *citD*, the cofactor synthesis enzyme by *citG-1* and *citG-2*, the cofactor-transferring enzyme by *citX*, and the priming enzyme by *citC*. (b) The oxidative and reductive TCA cycles. Most enzymes that catalyze reductive reactions unique to *G. bemidjensis* (pink arrows) also catalyze the oxidative reactions common to *G. sulfurreducens* and *G. metallireducens* (purple arrows). The exceptions are citrate lyase (reductive direction only) and citrate synthase and 2-oxoglutarate dehydrogenase (oxidative direction only).

by isocitrate dehydrogenase (Gbem\_2901), which is 71% identical to the *Chlorobium limicola* enzyme that is known to be reversible [25]. These genes form a cluster that includes malate dehydrogenase (Gbem\_2900), suggesting that flux of oxaloacetate through the reverse TCA cycle may be coordinated.

The presence of homologous gene clusters in *Pelobacter propionicus* and *Desulfuromonas acetoxidans* suggests that citrate lyase was present in the common

ancestor of the *Geobacteraceae*, and was lost by most species of the genus *Geobacter*. Interestingly, the 2'-(5'-triphosphoribosyl)-3'-dephospho-CoA synthase gene of the cluster, which is duplicated in *G. bemidjensis* (*citG-1* Gbem\_3856, *citG-2* Gbem\_0190), is present in *G. sulfurreducens* (GSU0806), along with the gene for the enzyme that transfers 2'-(5''-triphosphoribosyl)-3'-dephospho-CoA to the acyl carrier protein of citrate lyase (*citX* Gbem\_3857 = GSU0807), but the genes



encoding structural components of citrate lyase are absent, suggesting that 2'-(5''-triphosphoribosyl)-3'-dephospho-CoA may have a second function unrelated to citrate lyase.

Both succinyl:acetate CoA transferase isozymes of *G. sulfurreducens* are doubly present in *G. bemidjiensis* (*ato-3* Gbem\_0795 is a duplicate of *ato-1* Gbem\_0468, and *ato-4* Gbem\_3897 is a duplicate of *ato-2* Gbem\_2843). One possible explanation for this is that the duplicates have distinct functions in the oxidative and reductive TCA cycles (Figure 3b). Another possibility is that each of the duplicate citrate synthases (Gbem\_1652, Gbem\_3905) utilizes the acetyl-CoA produced by a different pair of isozymes. Although these details remain to be worked out, the TCA cycle on the whole appears to be more complex in the subsurface isolate *G. bemidjiensis* than in the non-subsurface *Geobacter* species examined to date.

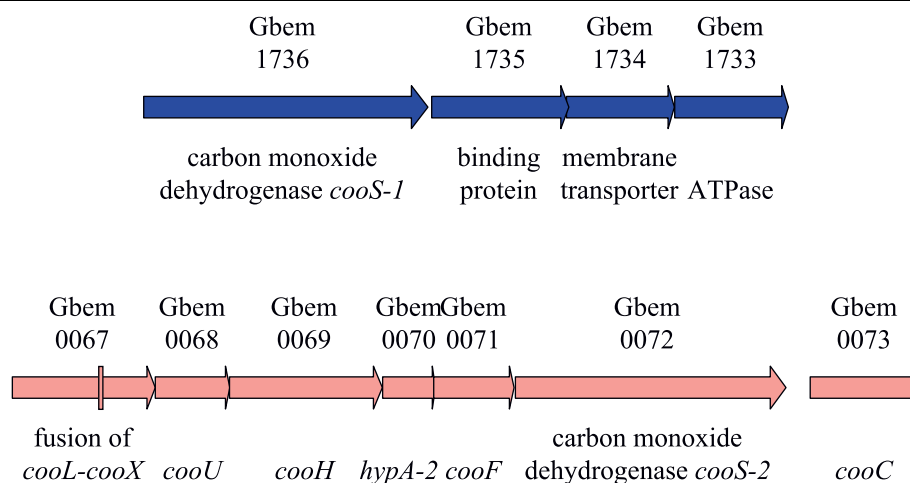
#### Carbon monoxide dehydrogenases and associated hydrogenase

Like the *G. metallireducens* genome, that of *G. bemidjiensis* encodes a carbon monoxide dehydrogenase (*cooS-1* Gbem\_1736) alongside an ABC transporter complex (Gbem\_1735-Gbem\_1733) of unknown substrate specificity (Figure 4). The presence of this gene suggests that *G. bemidjiensis* and *G. metallireducens* may be capable of carbon monoxide cycling (fermentative production of carbon monoxide followed by re-oxidation) under some conditions, as has been reported for *D. vulgaris* [26]. In addition, *G. bemidjiensis* possesses a cluster of genes (*cooLUIH-hypA-cooFSC* Gbem\_0067-Gbem\_0074) with

closely related homologs in *Carboxydotherrmus hydroge-noformans* [27], encoding a carbon monoxide dehydrogenase and associated hydrogenase (Figure 4). Thus, *G. bemidjiensis* may couple oxidation of exogenous carbon monoxide to formation of hydrogen from intracellular protons to establish a proton gradient. The hydrogen and some of the carbon dioxide released by this reaction may be fixed subsequently by the reverse TCA cycle. Genome-based metabolic models of the non-subsurface *Geobacter* species lack this aspect of carbon metabolism of *G. bemidjiensis*.

#### Glucose as electron donor

Several unique genes discovered in the *G. bemidjiensis* genome suggested that *G. bemidjiensis* should be able to utilize glucose and galactose as carbon sources. These genes encode a glucose/galactose transporter (*gluP* Gbem\_3671) 55% identical to that of *Brucella abortus* [28], a putative glucose 6-kinase (Gbem\_2002) 33% identical to that of *E. coli* [29], a galactose 1-kinase (Gbem\_4019) 35% identical to that of *E. coli* [30], and a uridine 5'-diphosphate (UDP)-glucose:galactose-1-phosphate uridylyltransferase (Gbem\_4017) 32% identical to that of *Thermotoga maritima* [31]. Most *Geobacteraceae*, which do not utilize glucose and galactose, possess only a putative glucose 6-kinase (Gbem\_1326) similar to those of *Streptomyces lividans* and *Streptomyces coelicolor* [32,33], a UDP-glucose/galactose 4-epimerase (Gbem\_3215) and a different putative galactose-1-phosphate uridylyltransferase. *G. bemidjiensis* was able to grow with glucose, but not galactose, as electron donor and carbon source, using Fe(III) oxides as the terminal



**Figure 4 The carbon monoxide dehydrogenase gene clusters.** One cluster has orthologs in *G. metallireducens* (blue arrows), and the other is unique to *G. bemidjiensis* (pink arrows) and contains an intragenic multicopy nucleotide sequence (pink rectangle). The carbon monoxide dehydrogenase-associated hydrogenase subunits are encoded by *cooLUIH*, the nickel insertion protein by *hypA-2*, an accessory protein by *cooC*, and an iron-sulfur cluster-binding oxidoreductase that transfers electrons from carbon monoxide dehydrogenase to the hydrogenase is encoded by *cooF*.

electron acceptor (D. Holmes, unpublished). This discovery illustrates the need for subsurface metabolic models to be based on subsurface genomes such as that of *G. bemidjiensis*, rather than approximations based on genomes of non-subsurface species.

#### Carbohydrate osmoprotectants and cell wall components

Like *G. sulfurreducens* and *G. metallireducens*, *G. bemidjiensis* is predicted to make trehalose from glucose storage polymers by the sequential action of maltooligosyltrehalose synthase (Gbem\_0134) and maltooligosyltrehalose trehalohydrolase (Gbem\_0132) [10]. *G. bemidjiensis* lacks homologs of the enzymes predicted to make trehalose from glucose-6-phosphate in *G. sulfurreducens* [10], but may be able to isomerize maltose to trehalose by means of a maltose-active trehalose synthase (Gbem\_0136) that is 33% identical to that of *T. thermophilus* [34]. The presence of a fructose/mannose 6-kinase (*mak* Gbem\_0370), 39% identical to that of *E. coli* [35] and a mannitol dehydrogenase (Gbem\_0401) with 47% identity to that of *Apium graveolens* [36] suggests that *G. bemidjiensis* may synthesize and break down D-mannitol as an additional osmoprotectant.

The lipopolysaccharide of *G. sulfurreducens* contains no O-antigen [37]. In contrast, the genome of *G. bemidjiensis* reveals many pathways for the production of various sugars that may be components of the cell wall (Additional file 3: Table S3). Thus, not only central metabolism of carbon but many specialized branch pathways appear to differ between subsurface and non-subsurface *Geobacter* species.

#### Biosynthesis of chorismate and folate in *G. bemidjiensis*

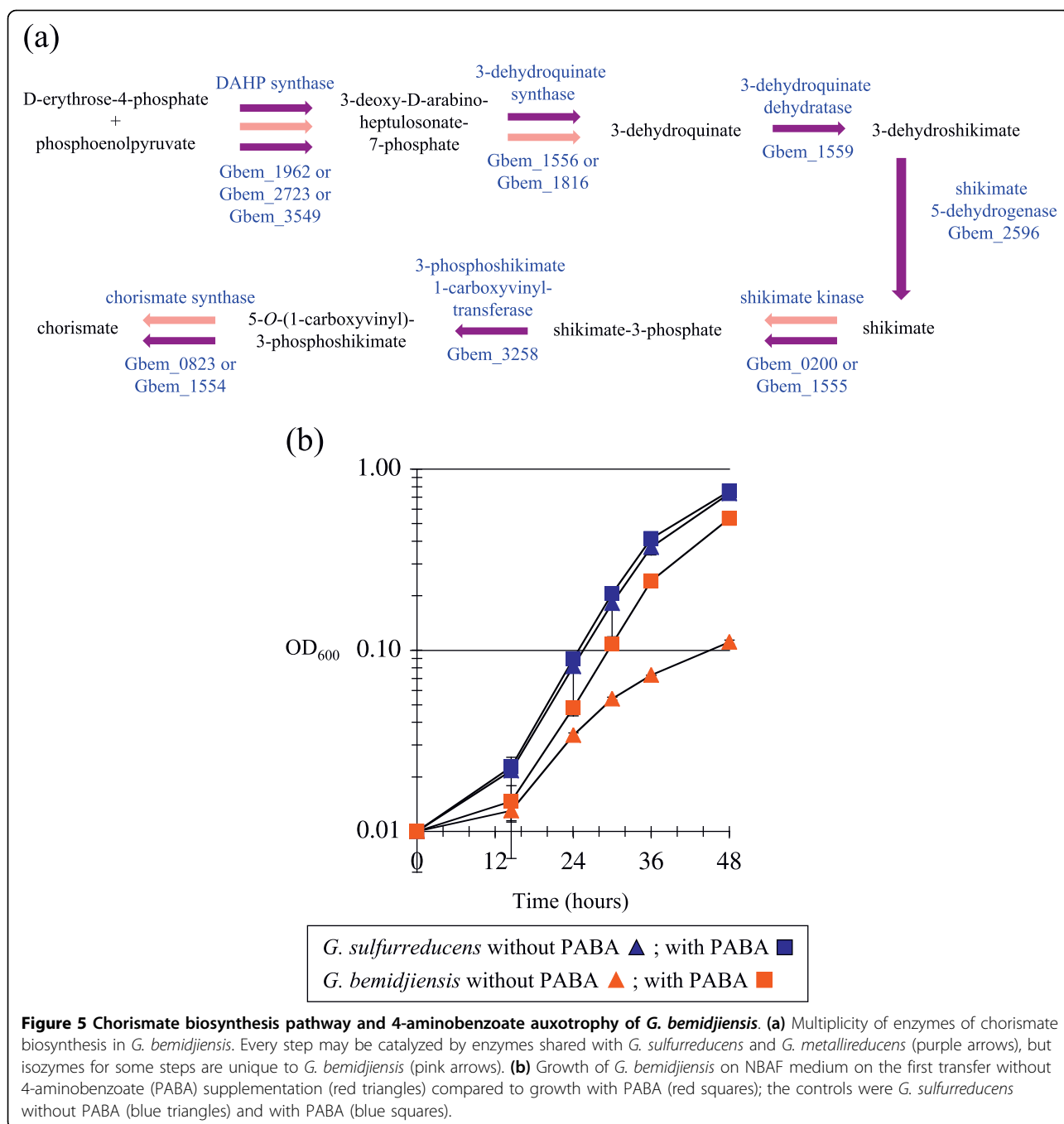
Chorismate is the common precursor of folate, menaquinone, and the aromatic amino acids phenylalanine, tyrosine and tryptophan. *Geobacter* species have multiple isozymes for the first reaction of the chorismate biosynthesis pathway [10], which may respond to negative feedback from different end products as in *E. coli* [38]. The chorismate biosynthesis pathway in *G. bemidjiensis* and *Geobacter* sp. M21 is notable for the presence of isozymes to catalyze several subsequent reactions as well (Figure 5a), differing in this aspect from *G. sulfurreducens* and *G. metallireducens*. Scattered genes encode a 3-dehydroquinate synthase with homologs in *G. daltonii* and cyanobacteria, a shikimate kinase with homologs in *Marinobacter* species, methanogens and Clostridia, and a chorismate synthase with homologs in sulfate-reducers and fungi. There is also a cluster of three genes encoding the same functions, as in *G. sulfurreducens* and *G. metallireducens*. The presence of these isozymes at multiple steps suggests that regulation of chorismate biosynthesis may be more complex in subsurface *Geobacter* species.

The *G. bemidjiensis* genome encodes no homolog of the putative 4-aminodeoxychorismate synthase/lyase of *G. metallireducens* and *G. sulfurreducens* (Gmet\_3010 = GSU0523), and an attempt to grow *G. bemidjiensis* without vitamin supplementation confirmed that it is auxotrophic solely for the 4-aminobenzoate (PABA) moiety of folate (Figure 5b). This is the first report of a *Geobacter* species with any vitamin requirement, and suggests that the metabolic activity of subsurface *Geobacter* species may be stimulated by adding PABA.

#### Degradation of benzoate and other aromatic pollutants

The ability to degrade benzoate is found in both subsurface and non-subsurface *Geobacter* species. *G. bemidjiensis* possesses orthologs of the *G. metallireducens* genes implicated in degradation of benzoate to 3-hydroxypimelyl-CoA (Figure 6) [39-42]. The benzoate-CoA ligase (*bamY* Gbem\_1429) gene sequence contains an internal stop codon (TAG) at position 448, where those of other *Geobacter* species specify glutamate (GAG). However, the gene next to *bamY* (Gbem\_1430) encodes an acyl-CoA hydrolase/transferase of unknown specificity. The possibility that benzoate can be activated to benzoyl-CoA by this enzyme, perhaps by transferring CoA from succinyl-CoA or acetyl-CoA, should be explored. Like *G. metallireducens*, *G. bemidjiensis* possesses *bamB-2* and *bamC-2* genes (Gbem\_2620-Gbem\_2619) paralogous to *bamB* and *bamC* of the putative benzoyl-CoA reductase, and a ferredoxin gene (Gbem\_2621) closely related to the N-terminal domain of *bamB*.

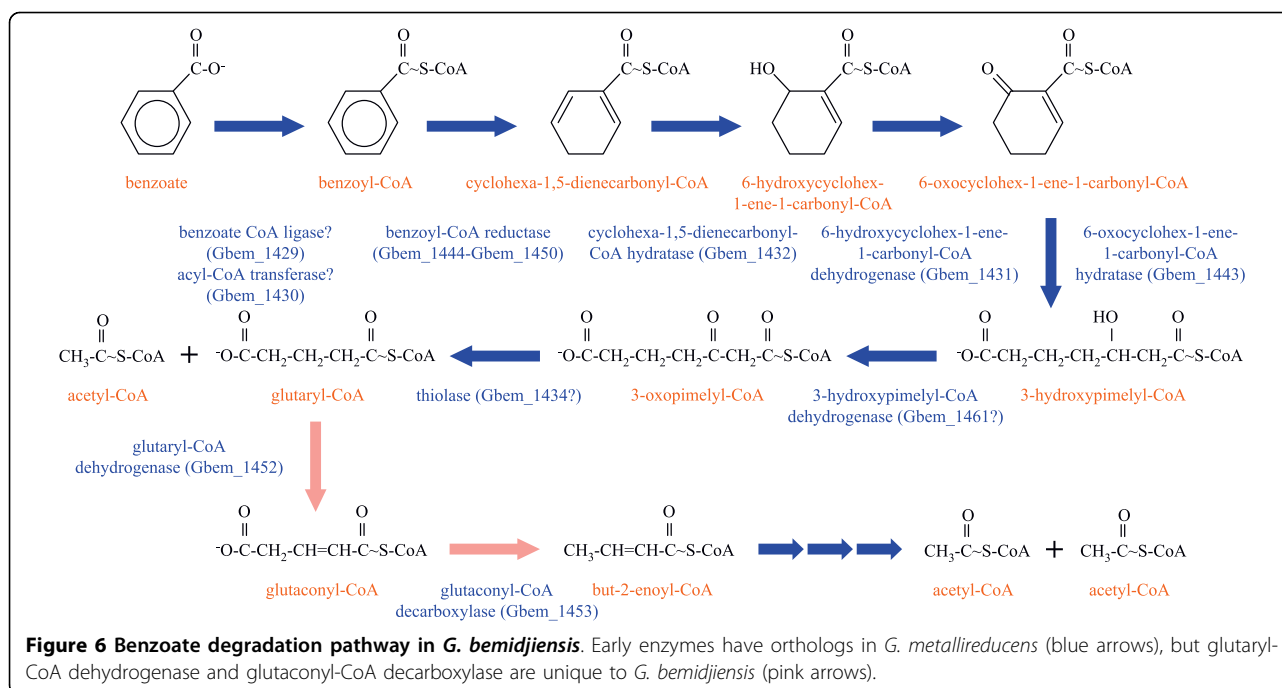
Degradation of 3-hydroxypimelyl-CoA in *G. bemidjiensis* (Figure 6) is predicted to involve a non-decarboxylating glutaryl-CoA dehydrogenase (Gbem\_1452) 44% identical to that of *Desulfococcus multivorans*, rather than a homolog of the decarboxylating glutaryl-CoA dehydrogenase of *G. metallireducens* [43]. Subsequent decarboxylation of glutaconyl-CoA may take place through the product of the adjacent gene (*gcdA* Gbem\_1453), which is 52% identical to the catalytic subunit of sodium-translocating glutaconyl-CoA decarboxylase of *Acidaminococcus fermentans* [44]. No homologs of the other three subunits were found in the *G. bemidjiensis* genome, indicating that decarboxylation of glutaconyl-CoA is not coupled to a sodium pump. Although the GcdA protein of *A. fermentans* on its own is capable of decarboxylating glutaconyl-CoA with free biotin as a cofactor [45], it is notable that the oxaloacetate decarboxylase encoded by the gene adjacent to *gcdA* in *G. bemidjiensis* (*oadA* Gbem\_1454) contains two biotin attachment domains, whereas its sodium pump-associated homologs contain only one. The possibility that the two decarboxylases cooperate as a complex deserves investigation.



Although the genome of *G. bemidjiensis* corroborates the observation that it cannot degrade as many aromatic compounds as *G. metallireducens* [39,42,46], it also suggests that *G. bemidjiensis* can detoxify some aromatic pollutants without degrading them. A homolog of the broad-specificity aldo-keto reductase YvgN of *B. subtilis* [47] is present (Gbem\_3980, 45% sequence identity), suggesting that *G. bemidjiensis* may convert chloro- and nitro- derivatives of benzaldehyde to the corresponding benzol derivatives. Although YvgN was previously described as a

methylglyoxal reductase [48], detoxification of methylglyoxal, a byproduct of carbohydrate and lipid metabolism, may be of minor importance in *G. bemidjiensis*, as a methylglyoxal synthase was not found in *G. bemidjiensis*, but only in *G. lovleyi* (Glov\_0611).

The fact that *G. bemidjiensis* is auxotrophic for PABA (Figure 5b) indicates that it has grown accustomed to an environment in which PABA is readily available, possibly in the form of 4-azobenzoate. *G. bemidjiensis* may convert azoaromatic compounds to arylamines by



means of an azoreductase (*azoR* Gbem\_2529) 30% identical to that of *E. coli* [49], which is not present in *G. metallireducens*. Furthermore, an arylamine *N*-acetyltransferase (Gbem\_0306) not found in other *Geobacteraceae* may act in detoxification of aromatic compounds by *G. bemidjensis*, and a putative amidohydrolase in the benzoate degradation gene cluster (Gbem\_1458 = Gmet\_2056) may also be involved in metabolism of aromatic compounds. Further studies of subsurface *Geobacter* species such as *G. bemidjensis* are necessary to characterize their abilities to transform aromatic compounds.

#### Alkylmercury lyase

The presence of an alkylmercury lyase (Gbem\_0319) 36% identical to that of *S. lividans* [50]) suggests that *G. bemidjensis* possesses broad-spectrum resistance to mercury in various organic forms. A homolog of this enzyme was not found in any other *Geobacter* species, but genes that may encode mercuric reductases (e.g. Gbem\_0457, Gbem\_0640) exhibit vertical inheritance in the family, indicating that *Geobacteraceae* may generally have the ability to detoxify inorganic Hg(II) ions, whereas subsurface *Geobacter* species such as *G. bemidjensis* may have acquired additional resistance to organomercuric compounds.

#### Expansion of transport systems for phosphate and molybdate

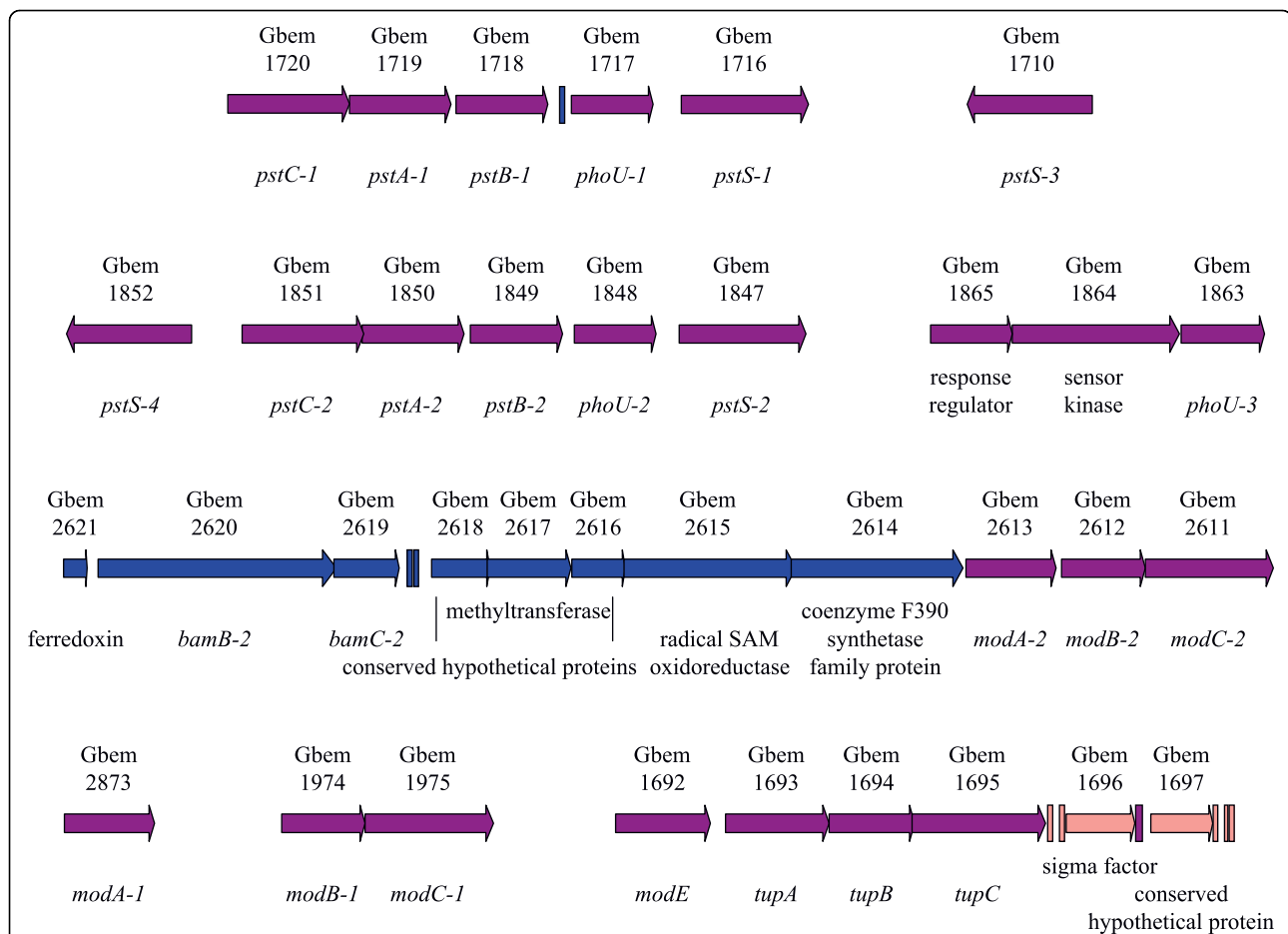
The ATP-binding cassette (ABC) transport system for phosphate consists of a periplasmic phosphate-binding

protein (PstS), two membrane proteins (PstC and PstA), an ATP-binding protein (PstB) and a regulatory protein (PhoU). Whereas these are encoded by single-copy genes in *G. sulfurreducens* and *G. metallireducens*, the *G. bemidjensis* genome contains duplicate transporters, triplicate regulators, and quadruplicate phosphate-binding proteins (Figure 7). This expansion may confer an advantage in the subsurface environment, where *Geobacter* species experience phosphate limitation [51].

The ABC transport system for molybdate, consisting of a molybdate-binding protein (ModA), membrane protein (ModB) and ATP-binding protein (ModC), has also expanded in *G. bemidjensis* (Figure 7): the *modB*<sub>1</sub>*C*<sub>1</sub> genes are located apart from the *modA*<sub>1</sub> gene, while the *modA*<sub>2</sub>*B*<sub>2</sub>*C*<sub>2</sub> genes remain an intact operon. The regulatory gene *modE* is located on the 5' side of the tungstate transporter genes *tupABC* (which are phylogenetically distinct from those of *G. sulfurreducens* and *G. metallireducens*; data not shown) in contrast with its location on the 5' side of *modABC* in *G. sulfurreducens*. The possibility that these expansions and rearrangements are a response by subsurface *Geobacter* species to molybdate limitation deserves to be investigated.

#### Oxygen respiration, oxygen detoxification, and possible anaerotaxis in *G. bemidjensis*

Genome sequencing led to the surprising discovery that *G. sulfurreducens* and *G. metallireducens* are capable of oxygen respiration using a cytochrome *caa*<sub>3</sub> oxidase complex, which is also found in *G. bemidjensis* (Gbem\_0042-Gbem\_0047). Near this operon in

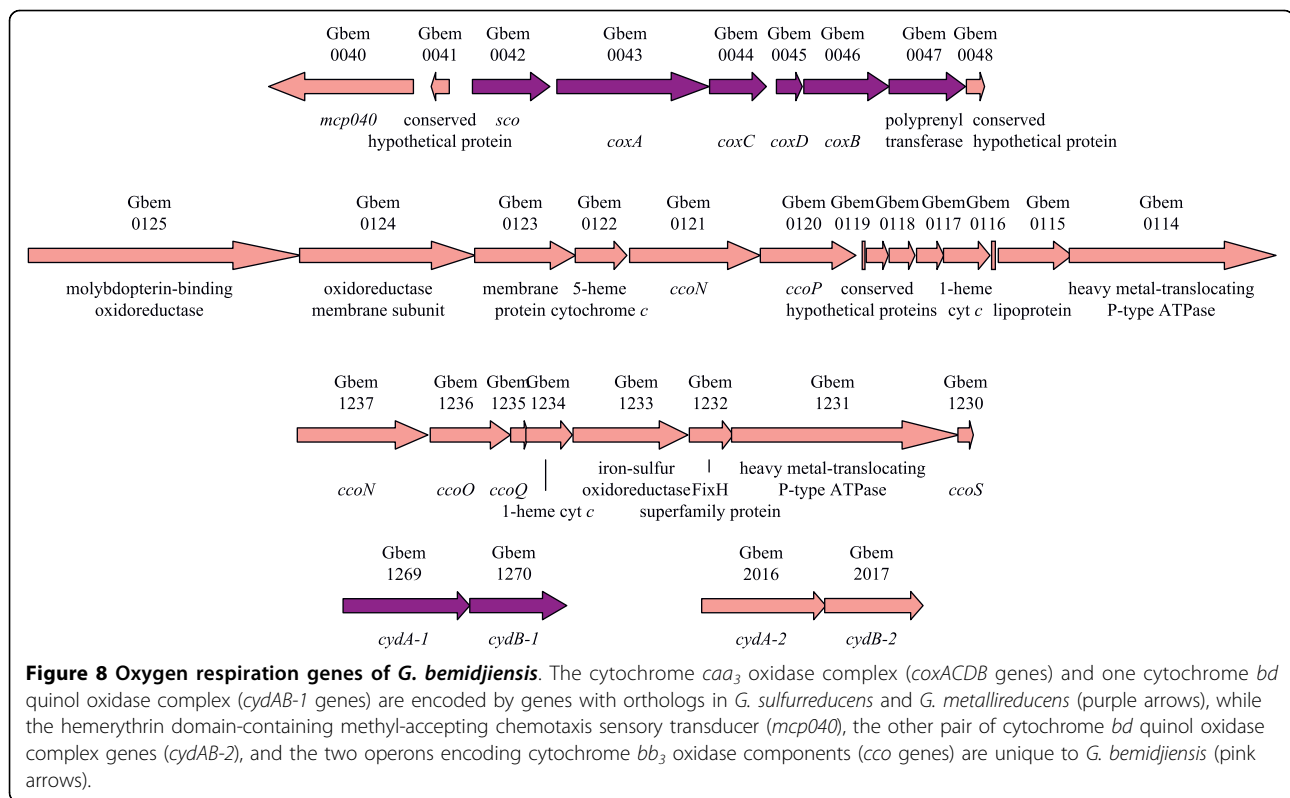


**Figure 7 Multiplicity of phosphate and molybdate transport system genes of *G. bemidjiensis*.** Some genes are unique to *G. bemidjiensis* (pink arrows), some have orthologs in *G. metallireducens* (blue arrows), and some are shared with both *G. sulfurreducens* and *G. metallireducens* (purple arrows). Multicopy nucleotide sequences (rectangles) are found in some intergenic regions. The periplasmic phosphate-binding proteins are encoded by *pstS* genes, the transporter membrane proteins by *pstA* and *pstC* genes, ATP-binding proteins by *pstB* genes, and regulators by *phoU* genes. The periplasmic molybdate-binding proteins are encoded by *modA* genes, the transporter membrane proteins by *modB* genes, the ATP-binding proteins by *modC* genes, and a regulator by *modE*. The periplasmic tungstate-binding protein is encoded by *tupA*, the transporter membrane protein by *tupB*, and the ATP-binding protein by *tupC*. The *bamB-2* gene encodes a paralogue of benzoyl-CoA reductase, and the *bamC-2* gene encodes a paralogue of a putative electron transfer protein of benzoyl-CoA reductase.

*G. bemidjiensis* only (Figure 8) is a gene encoding a methyl-accepting chemotaxis protein (Gbem\_0040) with a hemerythrin-like domain, possibly to sense oxygen, by analogy with the much larger DcrH protein of *D. vulgaris* [52]. In addition, *G. bemidjiensis* has two other operons encoding components of cytochrome *cbb<sub>3</sub>* oxidases: (Gbem\_1237-Gbem\_1230; Gbem\_0121-Gbem\_0120). The *G. bemidjiensis* genome contains two pairs of genes encoding cytochrome *bd* quinol oxidases: one (Gbem\_1269-Gbem\_1270) is closely related to its counterparts in *G. sulfurreducens* and *G. metallireducens*, while the other (Gbem\_2016-Gbem\_2017) is not. Thus, *G. bemidjiensis* may have enhanced capabilities for oxygen respiration compared to *G. sulfurreducens* and *G. metallireducens*, due to oxygen stress in its subsurface niche, and may have the ability to respond to

oxygen anaerotactically through chemotaxis-type signalling.

Eight hemerythrin family proteins (Gbem\_1252, Gbem\_2241, Gbem\_2255, Gbem\_2262, Gbem\_2701, Gbem\_2773, Gbem\_3870, Gbem\_4009) were predicted from the genome of *G. bemidjiensis*, suggesting that it may have expanded its ability to sequester molecular oxygen and deliver it to respiratory or detoxifying enzymes, in contrast to *G. metallireducens* with two hemerythrin homologs; *G. sulfurreducens* has six hemerythrin homologs. To detoxify reactive oxygen species, *G. bemidjiensis* possesses a desulfoferredoxin (Gbem\_3292) 60% identical to that of *Desulfoarculus baarsii* [53] and a rubredoxin: oxygen/nitric oxide oxidoreductase (Gbem\_0186) 31% identical to that of *D. gigas* [54], in addition to the superoxide dismutase (Gbem\_2204), peroxiredoxins

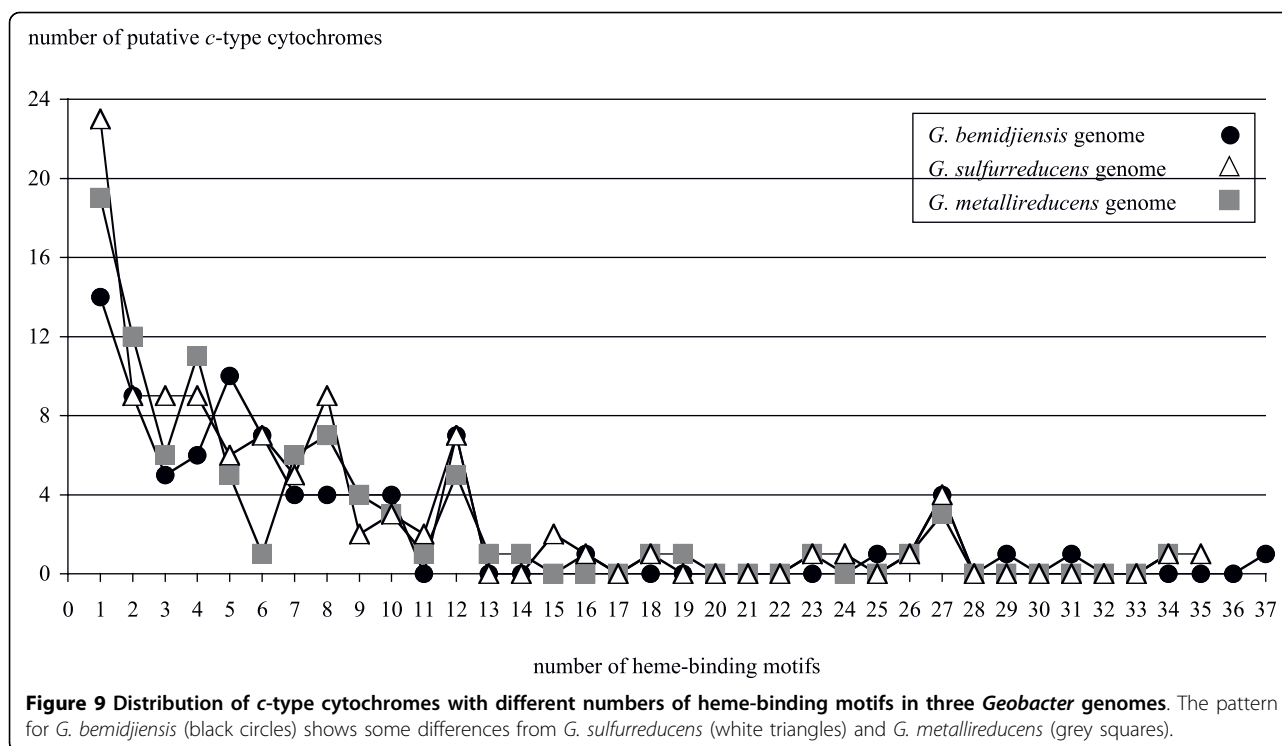


(Gbem\_0154, Gbem\_0221, Gbem\_1338, Gbem\_2956, Gbem\_4010) and two rubrerythrins (Gbem\_2313, Gbem\_3325) also present in *G. sulfurreducens* and *G. metallireducens*. Phylogenetic analysis (not shown) indicates that although the characterized cytochrome *c* peroxidase of *G. sulfurreducens* [55] has an excellent homolog in *G. bemidjiensis* (Gbem\_0020), this is actually an ortholog of MacA, implicated in Fe(III) reduction [56]. As in *G. metallireducens*, there is no catalase in *G. bemidjiensis*, meaning that no oxygen is produced from detoxification of hydrogen peroxide; detoxification by rubrerythrins produces only water. All *Geobacteraceae* encode at least one iron-sulfur-oxygen hybrid cluster protein, thought to detoxify an unidentified reactive compound in response to nitric oxide stress [57], as well as hydrogen peroxide stress [58]; *G. bemidjiensis* and *Geobacter* sp. M21 alone have three hybrid cluster protein genes (Gbem\_1033, Gbem\_1168, Gbem\_1239), evidently derived by expansion of a single ancestral gene. *G. bemidjiensis* also has a quinol-oxidizing nitric oxide reductase (*norZ* Gbem\_3901) 40% identical to that of *Cupriavidus necator* [59], with a distant homolog in *G. metallireducens*. Overall, the genome annotation indicates that *G. bemidjiensis* has evolved to cope with many kinds of reactive oxygen species, a finding that should improve models of *Geobacter* metabolism in the subsurface.

### The outer surface: *c*-type cytochromes, pili, and flagella

An understanding of subsurface *Geobacter* metabolism and physiology must include the *c*-type cytochromes that mediate electron transfer to extracellular electron acceptors such as insoluble Fe(III) oxides. The number of genes encoding *c*-type cytochromes in the *G. bemidjiensis* genome is 84, fewer than *G. metallireducens* (90 genes) and *G. sulfurreducens* (104 genes), despite the *G. bemidjiensis* genome being the largest of the three. The distribution of genes with a given number of heme-binding motifs (Figure 9) shows that all three species encode multiple *c*-type cytochromes with 12 or 27 predicted hemes (due to fusion of four or nine modules of the cytochrome *c*<sub>7</sub> family, respectively), and the most complex *c*-type cytochrome in each genome contains 34-37 hemes. However, *G. sulfurreducens* and *G. metallireducens* encode more monoheme *c*-type cytochromes than *G. bemidjiensis*, and while the mode number of hemes in multiheme *c*-type cytochromes of *G. bemidjiensis* is 5 hemes, the other two genomes have two modes with 4 and 8 hemes. Of the *c*-type cytochrome genes implicated in Fe(III) and U(VI) reduction in *G. sulfurreducens*, *G. bemidjiensis* possesses *macA* (Gbem\_0020) [56,60,61], three members of the *c*<sub>7</sub> family (*ppcB* Gbem\_4049, *ppcD* Gbem\_4043, and *ppcG* Gbem\_3455) [62], five members of the *omcS* family (Gbem\_1116, Gbem\_1117, Gbem\_1131, Gbem\_2679,





Gbem\_2680) [63], one member of the *omcB* family (Gbem\_3379) [64], and two *omcF*-related genes (Gbem\_1585, Gbem\_2183) [65]. There is no homolog of *omcE* [63]. Although *G. bemidjiensis* was reported not to grow with a graphite electrode as electron acceptor [3], it possesses a homolog of *omcZ* (Gbem\_3056), which is required for *G. sulfurreducens* to grow by transferring electrons to an electrode [66]. Overall, 41 *c*-type cytochromes of *G. bemidjiensis* (49%) have full-length homologs in *G. sulfurreducens* and/or *G. metallireducens* (Additional file 4: Table S4). Larger *c*-type cytochromes (13 or more heme-binding motifs) of *G. bemidjiensis* are absent from *G. sulfurreducens* and *G. metallireducens* with one exception (Gbem\_1124 = GSU2495; 26 heme-binding motifs). Of the *c*-type cytochromes of *G. bemidjiensis* that have one, two or five heme-binding motifs, approximately two-thirds in each category have no match in the other two genomes, whereas of those with three, four or six to twelve heme-binding motifs, at least half in each category are shared. Thus, extensive similarities as well as notable differences in the complement of *c*-type cytochromes exist between the subsurface species *G. bemidjiensis* and its non-subsurface relatives.

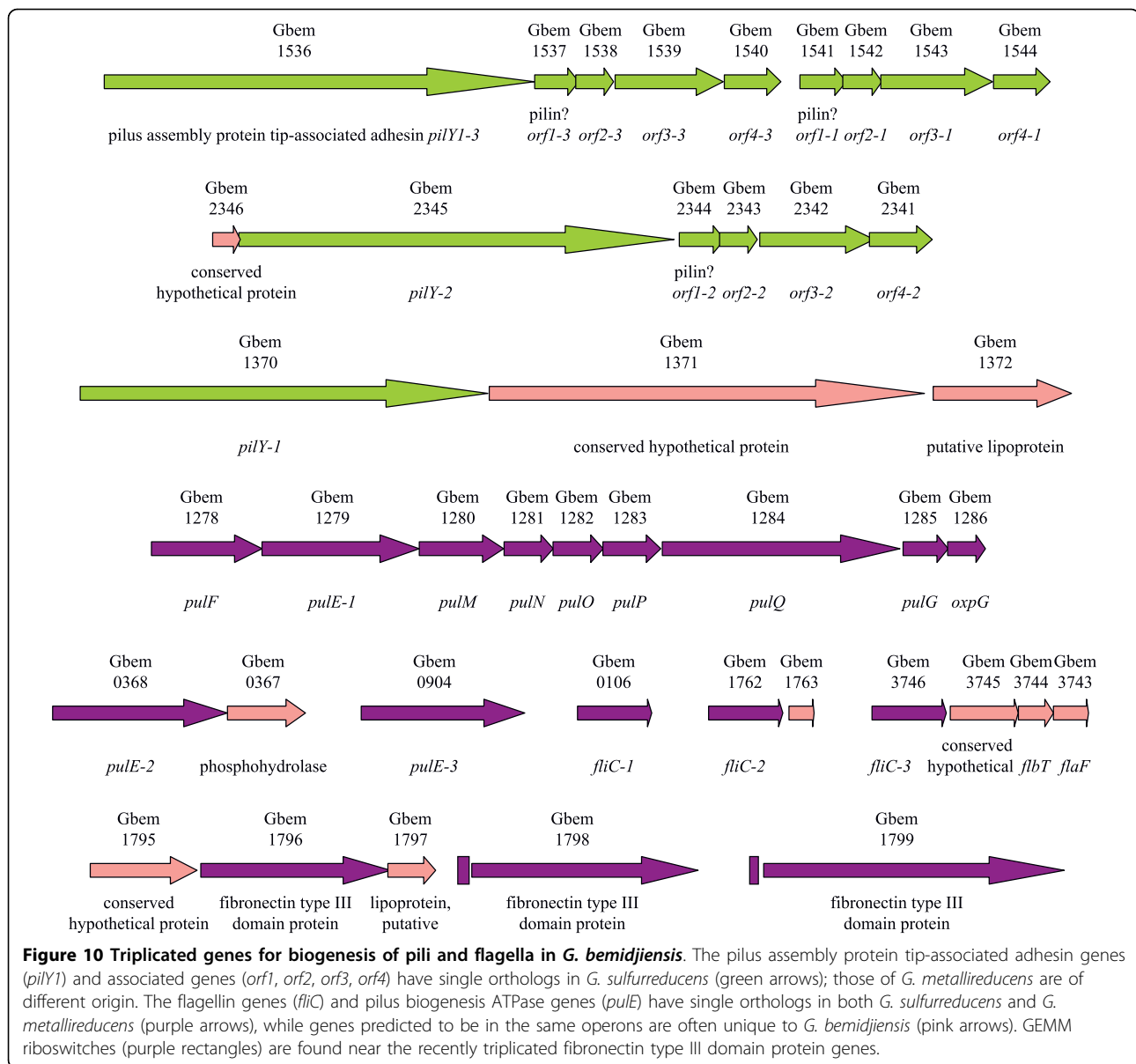
Several genes of pilus biogenesis are present in triplicate in the *G. bemidjiensis* genome (Figure 10), all apparently expanded from ancestral single-copy genes found in *G. sulfurreducens* and other *Geobacteraceae* (but not *G. metallireducens*). The ancestral flagellin gene has also expanded into triplicates (Gbem\_0106, Gbem\_1762,

Gbem\_3746), as has an ancestral GEMM riboswitch-regulated gene encoding a fibronectin type III domain protein (Gbem\_1796, Gbem\_1798, Gbem\_1799) that may be localized to the outer surface of the cell. Interestingly, phylogenetic analysis (not shown) indicates that *G. bemidjiensis* has also recently triplicated (as Gbem\_1116, Gbem\_2659 and Gbem\_2680) an ancestral gene related to *omcS* of *G. sulfurreducens*, which encodes an outer surface *c*-type cytochrome that is important for reduction of insoluble Fe (III) [63]. Thus, many proteins of the outer surface, with possible roles in electron transfer to insoluble extracellular electron acceptors, are triply present in *G. bemidjiensis*, although the significance of this expansion to life in subsurface environments is unknown.

#### Sigma factors and signalling proteins

The *G. bemidjiensis* genome was examined for features of gene regulation conserved between it and its non-subsurface relatives. Of the six sigma factors of RNA polymerase in *G. sulfurreducens*, *G. bemidjiensis* has orthologs of five: RpoD (Gbem\_3694), RpoS (Gbem\_2683), RpoN (Gbem\_0869), RpoH (Gbem\_0573), and FlhA (Gbem\_3764). No homolog of the putative stress response sigma factor RpoE was found. There are also two additional sigma factors (Gbem\_1696 and Gbem\_3169) unrelated to the unique sigma factor of *G. metallireducens*.

The *G. bemidjiensis* genome encodes 127 putative sensor histidine kinases containing HATPase\_c domains



(Additional file 5: Table S5), including 8 chemotaxis-type kinases (*cheA* genes), of which 47 genes (37%) have full-length homologs in *G. sulfurreducens* and/or *G. metallireducens*. There are 163 proteins with response receiver (REC) domains (Additional file 5: Table S5), including 19 that may belong to chemotaxis-type signalling pathways; of these, 82 genes (50%) have full-length homologs in *G. sulfurreducens* and/or *G. metallireducens*. Thus, *G. bemidjiensis* has a different and much larger repertoire of phosphorylation-dependent signalling proteins than either *G. sulfurreducens* or *G. metallireducens*. The *G. bemidjiensis* genome encodes 21 GGDEF domain proteins that may synthesize the intracellular messenger cyclic diguanylate (Additional

file 5: Table S5), a similar number to *G. sulfurreducens* and *G. metallireducens*, but only 10 of these are conserved. These differences in the repertoire of predicted signalling proteins among subsurface and non-subsurface *Geobacter* species are remarkable, especially considering that some ancestral genes encoding signalling proteins appear to have undergone duplication or triplication in *G. bemidjiensis* (Additional file 5: Table S5).

#### Non-protein-coding features of the *G. bemidjiensis* genome

Riboswitches that have been identified in the non-subsurface species *G. sulfurreducens* and *G. metallireducens* [10,67] were found in the subsurface *G. bemidjiensis*



genome also. In addition, several families of multicopy nucleotide sequences were noted in *G. bemidjiensis* (Additional file 6: Table S6; Additional files 7, 8, 9, 10, 11, 12, 13, 14 and 15: Figures S1-S9), most of which have no counterparts in the *G. sulfurreducens* or *G. metallireducens* genomes. Some of these families are based on palindromic sequences, and others consist of direct repeats of 6 to 42 nucleotides that occupy intergenic regions throughout the genome. Multicopy sequences (other than rRNA and tRNA genes) are found in 12% of regions between protein-coding genes in *G. bemidjiensis*, and multiple sequences are present in 31% of such intergenic regions, indicating that insertion is not random. One nucleotide sequence family was found inserted into protein-coding genes (on both strands and in all reading frames, without causing frameshifts) as well as between genes, as previously observed for a different family in *G. metallireducens* [10]. The implications of so many more multicopy sequences being present in the genome of a subsurface *Geobacter* species than in those of its non-subsurface relatives remain to be elucidated.

## Conclusions

The complete genome sequence of *G. bemidjiensis* reveals many differences from the previously published genomes of non-subsurface *Geobacter* species. Enzymes that account for the metabolic versatility of *G. bemidjiensis* were identified, and further metabolic, physiological and genomic peculiarities were discovered, including a more efficient pathway for oxidation of propionate, a pathway of fumarate disproportionation without excretion of acetate, a reductive TCA cycle, utilization of glucose, a defective folate biosynthesis pathway, and enhanced abilities to respond to oxygen stress. This information is of utmost value for an understanding of the activity of *Geobacteraceae* in subsurface environments undergoing bioremediation accompanied by reduction of Fe(III).

## Methods

### Sequence analysis and annotation

The genome of *G. bemidjiensis* Bem(T) [3] was sequenced at the Joint Genome Institute (JGI) using a combination of 3 kb, 6 kb and 35 kb DNA libraries. Inserts were sequenced from both ends using the standard Sanger method. All three libraries provided 11-fold coverage of the genome. The Phred/Phrap/Consed software package <http://www.phrap.com> was used for sequence assembly and quality assessment [68-70]. After the shotgun stage, 65888 reads were assembled with parallel Phrap (High Performance Software, LLC). Possible mis-assemblies were corrected with Dupfinisher (Han, 2006) or transposon bombing of bridging clones (Epicentre Biotechnologies, Madison, WI). Gaps between

contigs were closed by editing in Consed, by custom primer walks, or by PCR amplification (Roche Applied Science, Indianapolis, IN). A total of 2059 additional reactions were necessary to close gaps and to raise the quality of the finished sequence. The completed genome sequence of *G. bemidjiensis* Bem(T) contains 67990 reads, achieving an average of 11-fold sequence coverage per base with an error rate less than 1 in 100,000.

The protein-coding genes were predicted using Prodigal V1.0 [71]. A BLASTP search of the translations *vs.* Genbank's non-redundant database (NR of Nov. 2007) at 1e-05 evalue was conducted. Matches to the *Geobacter* genus were excluded and the alignment of the N-terminus of each gene model *vs.* the best NR match was used to pick a preferred gene model. The gene/protein set was searched using BLASTP, hmmer, RPS-BLAST and Interpro. BLASTP searches were done *vs.* Swiss-Prot/TrEMBL, NR, and KEGG databases with a cutoff evalue of 1e-05. Hmmer searches were done *vs.* Pfam and TIGRFam databases using the trusted cutoff. RPS-BLAST searches against PRIAM used its 1e-30 high-confidence cutoff and searches against COGS used a 1e-10 cutoff. Interpro was run using its default cutoffs. Automated product assignment was made using the following hierarchy of data sources: PRIAM, TIGRFam, Pfam, Interpro profiles, Swiss-Prot/TrEMBL, KEGG, and COG group. tRNAs were annotated using tRNAscan-SE (v1.23). rRNAs were annotated using RNAmmer v 1.1 [72]. The srpRNA was located using the SRPscan website. The *rnpB* and *ssrA* genes were located using the Rfam database and Infernal.

### Manual curation

The automated genome annotation of *G. bemidjiensis* and the manually curated genome annotations of *G. sulfurreducens* and *G. metallireducens* [10] were queried reciprocally with the protein BLAST algorithm [73] as implemented by OrthoMCL [74] using the default inflation parameter value (1.5), to identify mutual best hits as potential orthologs. The functional annotations of *G. bemidjiensis* genes were emended for consistency with their counterparts in *G. sulfurreducens* and *G. metallireducens*. The coordinates of numerous genes were adjusted according to the criteria of full-length alignment, plausible ribosome-binding sites, and minimal overlap between genes on opposite DNA strands. The annotations of *G. bemidjiensis* genes that were not matched to genes in *G. sulfurreducens* or *G. metallireducens* were checked by BLAST searches of NR and the Swiss-Prot database. Functional annotations in all three genomes were updated to match the experimental characterization of highly similar full-length homologs, with extensive reference to the EcoSal online textbook <http://www.ecosal.org> and the MetaCyc database [75]. Genes that had no protein-level homologs in NR were checked

(together with flanking intergenic sequences) by translated nucleotide BLAST in all six reading frames, and by nucleotide BLAST to ensure that conserved protein-coding or non-protein-coding features had not been missed. All intergenic regions of 30 bp or larger were also checked, which led to the annotation of numerous conserved nucleotide sequences.

### Phylogenetic analysis

Phylogenetic analysis of selected proteins was performed. In each case, the protein sequence of interest was included, along with its relatives, as identified by BLAST [76], and the set of sequences was aligned by Toffee [77]. ProtTest [78] was used to select a model of molecular evolution and MrBayes [79] was used to create a Bayesian estimation of the phylogeny.

### Growth experiments

To monitor the disproportionation of fumarate, *G. bemidjiensis* was cultured under strictly anaerobic conditions at 30°C in an atmosphere of N<sub>2</sub> and CO<sub>2</sub> (80%:20%), as previously described for *G. sulfurreducens* [80], in rubber-stoppered 156 ml bottles containing NBAF medium [81] from which sodium acetate was omitted. Samples of 1 ml were removed aseptically using anoxic syringes to monitor growth, then diluted 50-fold, passed through a 0.22 μm filter to remove cells, and stored at 4°C until high-pressure liquid chromatography analysis was performed as described previously [19]. The 4-aminobenzoate requirement of *G. bemidjiensis* was tested in rubber-stoppered 26 ml glass tubes containing 10 ml of NBAF medium [81] from which the vitamin solution and resazurin were omitted, with 4-aminobenzoate (Sigma Aldrich) added to individual tubes to a final concentration of 100 μg/L.

### Additional material

**Additional file 1: Table S1.** Genes of *G. bemidjiensis* in which frameshifts occur in homopolymeric regions.

**Additional file 2: Table S2.** Enzymes of acyl-CoA metabolism in *G. bemidjiensis*.

**Additional file 3: Table S3.** Selected sugar interconversion genes of *G. bemidjiensis*.

**Additional file 4: Table S4.** Predicted c-type cytochromes of *G. bemidjiensis*.

**Additional file 5: Table S5.** Signalling proteins of *G. bemidjiensis*.

**Additional file 6: Table S6.** Multicopy nucleotide sequences in *G. bemidjiensis*.

**Additional file 7: Figure S1.** Multicopy nucleotide sequences of the *G. bemidjiensis* genome: base coordinates and alignments. (See also Table S6).

**Additional file 8: Figure S2.** Multicopy nucleotide sequences of the *G. bemidjiensis* genome: base coordinates and alignments. (See also Table S6).

**Additional file 9: Figure S3.** Multicopy nucleotide sequences of the *G. bemidjiensis* genome: base coordinates and alignments. (See also Table S6).

**Additional file 10: Figure S4.** Multicopy nucleotide sequences of the *G. bemidjiensis* genome: base coordinates and alignments. (See also Table S6).

**Additional file 11: Figure S5.** Multicopy nucleotide sequences of the *G. bemidjiensis* genome: base coordinates and alignments. (See also Table S6).

**Additional file 12: Figure S6.** Multicopy nucleotide sequences of the *G. bemidjiensis* genome: base coordinates and alignments. (See also Table S6).

**Additional file 13: Figure S7.** Multicopy nucleotide sequences of the *G. bemidjiensis* genome: base coordinates and alignments. (See also Table S6).

**Additional file 14: Figure S8.** Multicopy nucleotide sequences of the *G. bemidjiensis* genome: base coordinates and alignments. (See also Table S6).

**Additional file 15: Figure S9.** Multicopy nucleotide sequences of the *G. bemidjiensis* genome: base coordinates and alignments. (See also Table S6).

### List of Abbreviations used

ABC: ATP-binding cassette; ATP: adenosine 5'-triphosphate; CoA: coenzyme A; DNA: deoxyribonucleic acid; FAD: flavin adenine dinucleotide; GTP: guanosine 5'-triphosphate; NAD(H): nicotinamide adenine dinucleotide (reduced); NADP(H): nicotinamide adenine dinucleotide 2'-phosphate (reduced); PABA: 4-aminobenzoate; rRNA: ribosomal RNA; RNA: ribonucleic acid; TCA: tricarboxylic acid; tRNA: transfer RNA; UDP: uridine 5'-diphosphate.

### Authors' contributions

CH supervised the genome sequencing, HK performed genome sequence finishing, and ML oversaw the automated annotation process. MA performed manual curation of the genome annotation (assisted by MC and NY) and wrote the manuscript. NY did the phylogenetic analyses. DH, CR and MA conducted physiological experiments. DL conceived of the study and offered guidance with the writing. All authors read, assisted with editing, and approved the final manuscript.

### Acknowledgements

We thank Mounir Izallalen for helpful discussions and P. Brown, T. Woodard, K. Nevin, T. Brettin, C. Detter, and C. Kuske for technical assistance. This research was supported by the Office of Science (Biological and Environmental Research), U.S. Department of Energy (Grant No. DE-FC02-02ER63446). The work conducted by the U.S. Department of Energy Joint Genome Institute is supported by the Office of Science of the U.S. Department of Energy under Contract No. DE-AC02-05CH11231.

### Author details

<sup>1</sup>University of Massachusetts Amherst, Amherst, MA 01003, USA.  
<sup>2</sup>Department of Energy, Joint Genome Institute, Walnut Creek, CA 94598, USA. <sup>3</sup>Oak Ridge National Laboratory, Oak Ridge, TN 37830, USA.

Received: 5 April 2010 Accepted: 9 September 2010

Published: 9 September 2010

### References

1. Lovley DR: **Dissimilatory Fe(III) and Mn(IV) reduction.** *Microbiol Rev* 1991, **55**(2):259-287.
2. Lovley DR, Holmes DE, Nevin KP: **Dissimilatory Fe(III) and Mn(IV) reduction.** *Adv Microb Physiol* 2004, **49**:219-286.
3. Nevin KP, Holmes DE, Woodard TL, Hinlein ES, Ostendorf DW, Lovley DR: ***Geobacter bemidjiensis* sp. nov. and *Geobacter psychrophilus* sp. nov., two novel Fe(III)-reducing subsurface isolates.** *Int J Syst Evol Microbiol* 2005, **55**(Pt 4):1667-1674.

4. Holmes DE, O'Neil RA, Vrionis HA, N'Guessan LA, Ortiz-Bernad I, Larrahondo MJ, Adams LA, Ward JA, Nicoll JS, Nevin KP, et al: **Subsurface clade of *Geobacteraceae* that predominates in a diversity of Fe(III)-reducing subsurface environments.** *ISME J* 2007, **1(8)**:663-677.
5. Wilkins MJ, Verberkmoes NC, Williams KH, Callister SJ, Mouser PJ, Elifantz H, N'Guessan AL, Thomas BC, Nicora CD, Shaht MB, et al: **Proteogenomic monitoring of *Geobacter* physiology during stimulated uranium bioremediation.** *Appl Environ Microbiol* 2009, **75(20)**:6591-6599.
6. Mahadevan R, Bond DR, Butler JE, Esteve-Nunez A, Coppi MV, Palsson BO, Schilling CH, Lovley DR: **Characterization of metabolism in the Fe(III)-reducing organism *Geobacter sulfurreducens* by constraint-based modeling.** *Appl Environ Microbiol* 2006, **72(2)**:1558-1568.
7. Sun J, Sayyar B, Butler JE, Pharkya P, Fahland TR, Famili I, Schilling CH, Lovley DR, Mahadevan R: **Genome-scale constraint-based modeling of *Geobacter metallireducens*.** *BMC Syst Biol* 2009, **3**:15.
8. Scheibe TD, Mahadevan R, Fang Y, Garg S, Long PE, Lovley DR: **Coupling a genome-scale metabolic model with a reactive transport model to describe *in situ* uranium bioremediation.** *Microbial Biotechnology* 2009, **2(2)**:274-286.
9. Zhao J, Fang Y, Scheibe TD, Lovley DR, Mahadevan R: **Modeling and sensitivity analysis of electron capacitance for *Geobacter* in sedimentary environments.** *J Contam Hydrol* 2010, **112(1-4)**:30-44.
10. Aklujkar M, Krushkal J, DiBartolo G, Lapidus A, Land ML, Lovley DR: **The genome sequence of *Geobacter metallireducens*: features of metabolism, physiology and regulation common and dissimilar to *Geobacter sulfurreducens*.** *BMC Microbiol* 2009, **9**:109.
11. Methé BA, Nelson KE, Eisen JA, Paulsen IT, Nelson W, Heidelberg JF, Wu D, Wu M, Ward N, Beanan MJ, et al: **Genome of *Geobacter sulfurreducens*: metal reduction in subsurface environments.** *Science* 2003, **302(5652)**:1967-1969.
12. Segura D, Mahadevan R, Juarez K, Lovley DR: **Computational and experimental analysis of redundancy in the central metabolism of *Geobacter sulfurreducens*.** *PLoS Comput Biol* 2008, **4(2)**:e36.
13. Grabau C, Cronan JE Jr: **Nucleotide sequence and deduced amino acid sequence of *Escherichia coli* pyruvate oxidase, a lipid-activated flavoprotein.** *Nucleic Acids Res* 1986, **14(13)**:5449-5460.
14. Thornton CG, Kumar GK, Shenoy BC, Haase FC, Phillips NFB, Park VM, Magner WJ, Hejlik DP, Wood HG, Samols D: **Primary structure of the 5 S subunit of transcarboxylase as deduced from the genomic DNA sequence.** *FEBS Lett* 1993, **330**:191-196.
15. Bond DR, Mester T, Nesbo CL, Izquierdo-Lopez AV, Collart FL, Lovley DR: **Characterization of citrate synthase from *Geobacter sulfurreducens* and evidence for a family of citrate synthases similar to those of eukaryotes throughout the *Geobacteraceae*.** *Appl Environ Microbiol* 2005, **71(7)**:3858-3865.
16. Matsuoka H, Hirooka K, Fujita Y: **Organization and function of the YsiA regulon of *Bacillus subtilis* involved in fatty acid degradation.** *J Biol Chem* 2007, **282(8)**:5180-5194.
17. Straub KL, Hanzlik M, Buchholz-Cleven BE: **The use of biologically produced ferrihydrite for the isolation of novel iron-reducing bacteria.** *Syst Appl Microbiol* 1998, **21(3)**:442-449.
18. Zaanmuller T, Kelly DJ, Glockner FO, Unden G: **Succinate dehydrogenase functioning by a reverse redox loop mechanism and fumarate reductase in sulphate-reducing bacteria.** *Microbiology* 2006, **152(Pt 8)**:2443-2453.
19. Risso C, Sun J, Zhuang K, Mahadevan R, Deboy R, Ismail W, Shrivastava S, Hout H, Kothari S, Daugherty S, et al: **Genome-scale comparison and constraint-based metabolic reconstruction of the facultative anaerobic Fe(III)-reducer *Rhodoferrax ferrireducens*.** *BMC Genomics* 2009, **10(1)**:447.
20. Baker KE, Ditullio KP, Neuhard J, Kelln RA: **Utilization of orotate as a pyrimidine source by *Salmonella typhimurium* and *Escherichia coli* requires the dicarboxylate transport protein encoded by *dctA*.** *J Bacteriol* 1996, **178(24)**:7099-7105.
21. Forward JA, Behrendt MC, Wyborn NR, Cross R, Kelly DJ: **TRAP transporters: a new family of periplasmic solute transport systems encoded by the *dctPQM* genes of *Rhodobacter capsulatus* and by homologs in diverse Gram-negative bacteria.** *J Bacteriol* 1997, **179(17)**:5482-5493.
22. Schwarz E, Oesterheld T, Reinke H, Beyreuther K, Dimroth P: **The sodium ion translocating oxalacetate decarboxylase of *Klebsiella pneumoniae*. Sequence of the biotin-containing alpha-subunit and relationship to other biotin-containing enzymes.** *J Biol Chem* 1988, **263(20)**:9640-9645.
23. Holmes DE, Nevin KP, O'Neil RA, Ward JE, Adams LA, Woodard TL, Vrionis HA, Lovley DR: **Potential for quantifying expression of the *Geobacteraceae* citrate synthase gene to assess the activity of *Geobacteraceae* in the subsurface and on current-harvesting electrodes.** *Appl Environ Microbiol* 2005, **71(11)**:6870-6877.
24. Tang YJ, Chakraborty R, Martin HG, Chu J, Hazen TC, Keasling JD: **Flux analysis of central metabolic pathways in *Geobacter metallireducens* during reduction of soluble Fe(III)-nitriilotriacetic acid.** *Appl Environ Microbiol* 2007, **73(12)**:3859-3864.
25. Kanao T, Kawamura M, Fukui T, Atomi H, Imanaka T: **Characterization of isocitrate dehydrogenase from the green sulfur bacterium *Chlorobium limicola*. A carbon dioxide-fixing enzyme in the reductive tricarboxylic acid cycle.** *Eur J Biochem* 2002, **269(7)**:1926-1931.
26. Voordouw G: **Carbon monoxide cycling by *Desulfovibrio vulgaris* Hildenborough.** *J Bacteriol* 2002, **184(21)**:5903-5911.
27. Soboh B, Linder D, Hedderich R: **Purification and catalytic properties of a CO-oxidizing:H<sub>2</sub>-evolving enzyme complex from *Carboxydotherrus hydrogeniformans*.** *Eur J Biochem* 2002, **269(22)**:5712-5721.
28. Essenberg RC, Candler C, Nida SK: ***Brucella abortus* strain 2308 putative glucose and galactose transporter gene: cloning and characterization.** *Microbiology* 1997, **143(Pt 5)**:1549-1555.
29. Meyer D, Schneider-Fresenius C, Horlacher R, Peist R, Boos W: **Molecular characterization of glucokinase from *Escherichia coli* K-12.** *J Bacteriol* 1997, **179(4)**:1298-1306.
30. Debouck C, Riccio A, Schumperli D, Mckenney K, Jeffers J, Hughes C, Rosenberg M, Heusterspreute M, Brunel F, Davison J: **Structure of the galactokinase gene of *Escherichia coli*, the last (?) gene of the *gal* operon.** *Nucleic Acids Res* 1985, **13(6)**:1841-1853.
31. Liebl W, Wagner B, Schellhase J: **Properties of an alpha-galactosidase, and structure of its gene *galA*, within an alpha-and beta-galactosidase utilization gene cluster of the hyperthermophilic bacterium *Thermotoga maritima*.** *Syst Appl Microbiol* 1998, **21(1)**:1-11.
32. Angell S, Schwarz E, Bibb MJ: **The glucose kinase gene of *Streptomyces coelicolor* A3(2): its nucleotide sequence, transcriptional analysis and role in glucose repression.** *Mol Microbiol* 1992, **6(19)**:2833-2844.
33. Mahr K, van Wezel GP, Svensson C, Kregel U, Bibb MJ, Titgemeyer F: **Glucose kinase of *Streptomyces coelicolor* A3(2): large-scale purification and biochemical analysis.** *Antonie Van Leeuwenhoek* 2000, **78(3-4)**:253-261.
34. Tsusaki K, Nishimoto T, Nakada T, Kubota M, Chaen H, Fukuda S, Sugimoto T, Kurimoto M: **Cloning and sequencing of trehalose synthase gene from *Thermus aquaticus* ATCC33923.** *Biochim Biophys Acta* 1997, **1334(1)**:28-32.
35. Sproul AA, Lambourne LT, Jean-Jacques DJ, Kornberg HL: **Genetic control of manno(fructo)kinase activity in *Escherichia coli*.** *Proc Natl Acad Sci USA* 2001, **98(26)**:15257-15259.
36. Williamson JD, Stoop JM, Massel MO, Conkling MA, Pharr DM: **Sequence analysis of a mannitol dehydrogenase cDNA from plants reveals a function for the pathogenesis-related protein EL13.** *Proc Natl Acad Sci USA* 1995, **92(16)**:7148-7152.
37. Vinogradov E, Korenevsky A, Lovley DR, Beveridge TJ: **The structure of the core region of the lipopolysaccharide from *Geobacter sulfurreducens*.** *Carbohydr Res* 2004, **339(18)**:2901-2904.
38. Wallace BJ, Pittard J: **Genetic and biochemical analysis of the isoenzymes concerned in the first reaction of aromatic biosynthesis in *Escherichia coli*.** *J Bacteriol* 1967, **93(1)**:237-244.
39. Wischgoll S, Heintz D, Peters F, Erxleben A, Sarnighausen E, Reski R, van Dorsselaer A, Boll M: **Gene clusters involved in anaerobic benzoate degradation of *Geobacter metallireducens*.** *Mol Microbiol* 2005, **58(5)**:1238-1252.
40. Kung JW, Loffler C, Dorner K, Heintz D, Gallien S, Van Dorsselaer A, Friedrich T, Boll M: **Identification and characterization of the tungsten-containing class of benzoyl-coenzyme A reductases.** *Proc Natl Acad Sci USA* 2009, **106(42)**:17687-17692.
41. Peters F, Shinoda Y, McInerney MJ, Boll M: **Cyclohexa-1,5-diene-1-carbonyl-coenzyme A (CoA) hydratases of *Geobacter metallireducens* and *Syntrophus aciditrophicus*: Evidence for a common benzoyl-CoA degradation pathway in facultative and strict anaerobes.** *J Bacteriol* 2007, **189(3)**:1055-1060.
42. Butler JE, He Q, Nevin KP, He Z, Zhou J, Lovley DR: **Genomic and microarray analysis of aromatics degradation in *Geobacter***

- metallireducens* and comparison to a *Geobacter* isolate from a contaminated field site. *BMC Genomics* 2007, **8**:180.
43. Wischgoll S, Taubert M, Peters F, Jehmlich N, von Bergen M, Boll M: Decarboxylating and nondecarboxylating glutaryl-coenzyme A dehydrogenases in the aromatic metabolism of obligately anaerobic bacteria. *J Bacteriol* 2009, **191**(13):4401-4409.
44. Bendrat K, Buckel W: Cloning, sequencing and expression of the gene encoding the carboxyltransferase subunit of the biotin-dependent Na<sup>+</sup> pump glutamyl-CoA decarboxylase from *Acidaminococcus fermentans* in *Escherichia coli*. *Eur J Biochem* 1993, **211**(3):697-702.
45. Braune A, Bendrat K, Rospert S, Buckel W: The sodium ion translocating glutamyl-CoA decarboxylase from *Acidaminococcus fermentans*: cloning and function of the genes forming a second operon. *Mol Microbiol* 1999, **31**(2):473-487.
46. Peters F, Heintz D, Johannes J, van Dorsselaer A, Boll M: Genes, enzymes, and regulation of para-cresol metabolism in *Geobacter metallireducens*. *J Bacteriol* 2007, **189**(13):4729-4738.
47. Lei J, Zhou YF, Li LF, Su XD: Structural and biochemical analyses of YvgN and YtbE from *Bacillus subtilis*. *Protein Sci* 2009, **18**(8):1792-1800.
48. Sakai A, Katayama K, Katsuragi T, Tani Y: Glycolaldehyde-forming route in *Bacillus subtilis* in relation to vitamin B6 biosynthesis. *J Biosci Bioeng* 2001, **91**(2):147-152.
49. Nakanishi M, Yatome C, Ishida N, Kitade Y: Putative ACP phosphodiesterase gene (*acpD*) encodes an azoreductase. *J Biol Chem* 2001, **276**(49):46394-46399.
50. Sedlmeier R, Altenbuchner J: Cloning and DNA sequence analysis of the mercury resistance genes of *Streptomyces lividans*. *Mol Gen Genet* 1992, **236**(1):76-85.
51. N'Guessan AL, Elifantz H, Nevin KP, Mouser PJ, Methe B, Woodard TL, Manley K, Williams KH, Wilkins MJ, Larsen JT, et al: Molecular analysis of phosphate limitation in *Geobacteraceae* during the bioremediation of a uranium-contaminated aquifer. *ISME J* 2010, **4**(2):253-266.
52. Xiong J, Kurtz DM Jr, Ai J, Sanders-Loehr J: A hemerythrin-like domain in a bacterial chemotaxis protein. *Biochemistry* 2000, **39**(17):5117-5125.
53. Pianzola MJ, Soubes M, Touati D: Overproduction of the *rbo* gene product from *Desulfovibrio* species suppresses all deleterious effects of lack of superoxide dismutase in *Escherichia coli*. *J Bacteriol* 1996, **178**(23):6736-6742.
54. Gomes CM, Silva G, Oliveira S, LeGall J, Liu MY, Xavier AV, Rodrigues-Pousada C, Teixeira M: Studies on the redox centers of the terminal oxidase from *Desulfovibrio gigas* and evidence for its interaction with rubredoxin. *J Biol Chem* 1997, **272**(36):22502-22508.
55. Hoffmann M, Seidel J, Einsle O: CcpA from *Geobacter sulfurreducens* is a basic di-heme cytochrome c peroxidase. *J Mol Biol* 2009, **393**(4):951-965.
56. Butler JE, Kaufmann F, Coppi MV, Nunez C, Lovley DR: MacA, a di-heme c-type cytochrome involved in Fe(III) reduction by *Geobacter sulfurreducens*. *J Bacteriol* 2004, **186**(12):4042-4045.
57. Filenko N, Spiro S, Browning DF, Squire D, Overton TW, Cole J, Constantinidou C: The NsrR regulon of *Escherichia coli* K-12 includes genes encoding the hybrid cluster protein and the periplasmic, respiratory nitrite reductase. *J Bacteriol* 2007, **189**(12):4410-4417.
58. Almeida CC, Romao CV, Lindley PF, Teixeira M, Saraiva LM: The role of the hybrid cluster protein in oxidative stress defense. *J Biol Chem* 2006, **281**(43):32445-32450.
59. Cramm R, Siddiqui RA, Friedrich B: Two isofunctional nitric oxide reductases in *Alcaligenes eutrophus* H16. *J Bacteriol* 1997, **179**(21):6769-6777.
60. Kim BC, Lovley DR: Investigation of direct vs. indirect involvement of the c-type cytochrome MacA in Fe(III) reduction by *Geobacter sulfurreducens*. *FEMS Microbiol Lett* 2008, **286**(1):39-44.
61. Shelobolina ES, Coppi MV, Korenevsky AA, DiDonato LN, Sullivan SA, Konishi H, Xu H, Leang C, Butler JE, Kim BC, et al: Importance of c-type cytochromes for U(VI) reduction by *Geobacter sulfurreducens*. *BMC Microbiol* 2007, **7**:16.
62. Lloyd JR, Leang C, Hodges Myerson AL, Coppi MV, Ciufo S, Methé B, Sandler SJ, Lovley DR: Biochemical and genetic characterization of PpcA, a periplasmic c-type cytochrome in *Geobacter sulfurreducens*. *Biochem J* 2003, **369**(Pt 1):153-161.
63. Mehta T, Coppi MV, Childers SE, Lovley DR: Outer membrane c-type cytochromes required for Fe(III) and Mn(IV) oxide reduction in *Geobacter sulfurreducens*. *Appl Environ Microbiol* 2005, **71**(12):8634-8641.
64. Leang C, Coppi MV, Lovley DR: OmcB, a c-type polyheme cytochrome, involved in Fe(III) reduction in *Geobacter sulfurreducens*. *J Bacteriol* 2003, **185**(7):2096-2103.
65. Kim BC, Leang C, Ding YH, Glaven RH, Coppi MV, Lovley DR: OmcF, a putative c-type monoheme outer membrane cytochrome required for the expression of other outer membrane cytochromes in *Geobacter sulfurreducens*. *J Bacteriol* 2005, **187**(13):4505-4513.
66. Nevin KP, Kim BC, Glaven RH, Johnson JP, Woodard TL, Methe BA, DiDonato RJ, Covalla SF, Franks AE, Liu A, et al: Anode biofilm transcriptomics reveals outer surface components essential for high density current production in *Geobacter sulfurreducens* fuel cells. *PLoS One* 2009, **4**(5):e5628.
67. Sudarsan N, Lee ER, Weinberg Z, Moy RH, Kim JN, Link KH, Breaker RR: Riboswitches in eubacteria sense the second messenger cyclic di-GMP. *Science* 2008, **321**(5887):411-413.
68. Ewing B, Green P: Base-calling of automated sequencer traces using phred. II. Error probabilities. *Genome Res* 1998, **8**(3):186-194.
69. Ewing B, Hillier L, Wendl MC, Green P: Base-calling of automated sequencer traces using phred. I. Accuracy assessment. *Genome Res* 1998, **8**(3):175-185.
70. Gordon D, Abajian C, Green P: Consed: a graphical tool for sequence finishing. *Genome Res* 1998, **8**(3):195-202.
71. Hyatt D, Chen GL, Locascio PF, Land ML, Larimer FW, Hauser LJ: Prodigal: prokaryotic gene recognition and translation initiation site identification. *BMC Bioinformatics* 2010, **11**:119.
72. Lagesen K, Hallin P, Rodland EA, Staerfeldt HH, Rognes T, Ussery DW: RNAMmer: consistent and rapid annotation of ribosomal RNA genes. *Nucleic Acids Res* 2007, **35**(9):3100-3108.
73. Altschul SF, Gish W, Miller W, Myers EW, Lipman DJ: Basic local alignment search tool. *J Mol Biol* 1990, **215**(3):403-410.
74. Li L, Stoeckert CJ Jr, Roos DS: OrthoMCL: identification of ortholog groups for eukaryotic genomes. *Genome Res* 2003, **13**(9):2178-2189.
75. Caspi R, Foerster H, Fulcher CA, Kaipa P, Krummenacker M, Latendresse M, Paley S, Rhee SY, Shearer AG, Tissier C, et al: The MetaCyc Database of metabolic pathways and enzymes and the BioCyc collection of Pathway/Genome Databases. *Nucleic Acids Res* 2008, **36** Database: D623-631.
76. Altschul SF, Madden TL, Schaffer AA, Zhang J, Zhang Z, Miller W, Lipman DJ: Gapped BLAST and PSI-BLAST: a new generation of protein database search programs. *Nucleic Acids Res* 1997, **25**(17):3389-3402.
77. Notredame C, Higgins DG, Heringa J: T-Coffee: A novel method for fast and accurate multiple sequence alignment. *J Mol Biol* 2000, **302**(1):205-217.
78. Abascal F, Zardoya R, Posada D: ProtTest: selection of best-fit models of protein evolution. *Bioinformatics* 2005, **21**(9):2104-2105.
79. Ronquist F, Huelsenbeck JP: MrBayes 3: Bayesian phylogenetic inference under mixed models. *Bioinformatics* 2003, **19**(12):1572-1574.
80. Caccavo F Jr, Lonergan DJ, Lovley DR, Davis M, Stolz JF, McInerney MJ: *Geobacter sulfurreducens* sp. nov., a hydrogen- and acetate-oxidizing dissimilatory metal-reducing microorganism. *Appl Environ Microbiol* 1994, **60**(10):3752-3759.
81. Coppi MV, Leang C, Sandler SJ, Lovley DR: Development of a genetic system for *Geobacter sulfurreducens*. *Appl Environ Microbiol* 2001, **67**(7):3180-3187.

doi:10.1186/1471-2164-11-490

Cite this article as: Aklujkar et al.: The genome of *Geobacter bemidjensis*, exemplar for the subsurface clade of *Geobacter* species that predominate in Fe(III)-reducing subsurface environments. *BMC Genomics* 2010 **11**:490.