



Biochemical diversity evaluation in chickpea accessions employing mini-core collection

Sameer Suresh Bhagyawant¹ · Ajay Kumar Gautam¹ · Dakshita Tanaji Narvekar¹ · Neha Gupta¹ · Amita Bhadkaria¹ · Nidhi Srivastava² · Hari D. Upadhyaya³

Received: 17 December 2017 / Revised: 30 June 2018 / Accepted: 6 July 2018
© Prof. H.S. Srivastava Foundation for Science and Society 2018

Abstract The seeds of chickpea provide an exceptional source of dietary proteins and is one of the important legumes in both developed and developing countries over the world. The available germplasm of cultivated chickpea is deficient in desired biochemical signatures. To identify new sources of variations for breeding, reduced subsets of germplasm such as mini-core collection can be explored as an effective resource. In the present investigation, mini-core collections consisting of 215 accessions of chickpea were extensively evaluated for tapping biochemical diversity. Analysis included ten biochemical parameters comprising total protein, total free amino acids, phytic acid, tannin, total phenolics, total flavonoids, lectin, DPPH radical scavenging activity, in vitro digestibility of protein and starch. The spectrum of diversity was documented for total protein (4.60–33.90%), total free amino acids (0.092–9.33 mg/g), phytic acid (0.009–4.06 mg/g), tannin (0.232–189.63 mg/g), total phenolics (0.15–0.81 mg/g), total flavonoids (0.04–1.57 mg/g), lectin (0.07–330.32 HU/mg), DPPH radical scavenging activity (26.74–49.11%), in vitro protein digestibility (59.45–76.22%) and in vitro starch

digestibility (45.63–298.39 mg of maltose/g). The principal component analysis revealed association of chickpea higher protein content to the lower level of total phenolics and flavonoid contents. The dendrogram obtained by unweighted pair group method using arithmetic average cluster analysis grouped the chickpea accessions into two major clusters. This is the first comprehensive report on biochemical diversity analysed in the mini-core chickpea accessions. The ultimate purpose of conducting such studies was to deliver information on nutritional characteristics for effective breeding programmes. Depending on the objectives of the breeding aforesaid accessions could be employed as a parent.

Keywords Chickpea · Mini-core collection · Genetic diversity · In vitro protein digestibility · Lectin · DPPH

Introduction

A subclass representing 10% of the overall accessions constitute core collection and signifies the genetic variability of entire germplasm (Frankel 1984). The accessions contained in some of the crop species are several thousand and subsequently challenging for assessment (Upadhyaya et al. 2010). To overcome this, mini-core was developed consisting of 1% of entire collection representing spectrum of diversity. The core and mini-core collections thus stand for diversity of entire collection promoting germplasm utilization and crop improvement enhancement. Mini-core approach consequently provides information of different germplasm that is required for evolving broad-based cultivars (Upadhyaya et al. 2013).

Chickpea (*Cicer arietinum* L.) belonging to family *Fabaceae*, is a major food legume in countries across the

Electronic supplementary material The online version of this article (<https://doi.org/10.1007/s12298-018-0579-3>) contains supplementary material, which is available to authorized users.

✉ Sameer Suresh Bhagyawant
sameerbhagyawant@gmail.com

¹ School of Studies in Biotechnology, Jiwaji University, Gwalior, India

² Department of Bioscience and Biotechnology, Banasthali Vidhyapeeth, Banasthali, India

³ International Crops Research Institute for the Semi-arid Tropics, Patancheru, Hyderabad, Telangana, India

world. To reduce the malnutrition in developing countries, seeds of chickpea offer cheapest source of protein and high nutrition (Thudi et al. 2017). The functionality of chickpea seed proteins has received attention in recent years, owing to anti-angiotensin-I converting enzyme, anticancer, antidiabetic and anti HIV-1 reverse transcriptase effects (Roy et al. 2010). In our previous report, biochemical characterization of 20 different chickpea seed accessions was carried out to ascertain its nutritional status (Bhagya-want et al. 2015). International crops research institute for semi-arid tropics (ICRISAT), Patancheru (A.P.) India, has been front runner in collecting and maintaining more than 20,000 chickpea accessions from various parts of the world (www.icrisat.org).

Crop improvement programmes are being pursued vigorously. Germplasm with broad genetic variability is a primary need to breed and develop cultivars with superior yield having enhanced nutrients. Being a self-pollinated winter crop, available germplasm of cultivated chickpea shows a low genetic and biochemical variation profile. This therefore, further necessitates the exploitation of supplementary germplasm like mini-core accessions for procuring biochemical traits of nutritional composition. For the chickpea future crop improvement, mini-core collection needs to be targeted.

Chickpea was referred as ‘orphan crop’ until last decade due to restricted genome resources (Varshney et al. 2012). Thereafter, significant accomplishments were made in deployment of genetic resources leading to chickpea crop enhancement (Roorkiwal et al. 2017). Previously chickpea mini-core accessions were assessed for tolerance to soil salinity (Serraj et al. 2004), root traits (Kashiwagi et al. 2005), multiple disease resistance (Pande et al. 2006), variability under different environments (Parameshwarappa et al. 2012), agronomic evaluation for biotic and abiotic stresses (Upadhyaya et al. 2013) and AFLP analysis to identify diverse genetic stocks (Saeed and Darvishzadeh 2016). However, there does not seem to be any clinching evidences in the literature domain about biochemical characterization of mini-core chickpea accessions. At present, chickpea improvement programmes augmenting nutritional quality is the principal concern for chickpea breeders worldwide. Studies on biochemical variations in chickpea mini-core seed germplasm are unknown till date and may provide further breeding guidelines. The interesting facet of the work being representation of 215 mini-core chickpea accessions obtained from ICRISAT employed for analysing biochemical signatures. The information presented here could assist chickpea breeders to select parents for future breeding programmes especially for biofortification.

Materials

Two hundred and fifteen mini-core accessions of chickpea (*C. arietinum* L.) were used for analysis (Fig. 1), out of which four accessions were Indian national checks. The mature and dry seed material was obtained from International Crops Research Institute for the Semi-arid Tropics (ICRISAT), Patancheru, Hyderabad India, under MTA understanding. Seeds were ground in a grinder and obtained seed powder was first defatted using chilled acetone and air dried. Analysis was performed under ambient conditions of temperature and humidity.

Methods

Extraction and estimation of total protein and total amino acid content

The total protein was extracted by the process of Fan and Sosulski (1974). The chickpea seeds powder (100 mg) was kept overnight in 0.1 N NaOH (25 ml) and centrifuged at 10,000 rpm for 20 min. The obtained supernatant was used for the total protein estimation following the procedure of Lowry et al. (1951).

The total amino acid content was extracted by following the method of Moore and Stein (1948). 80% ethanol (5–10 ml) was added to seed powder (500 mg) and the contents were subsequently centrifuged. The obtained supernatant was pooled to read the intensity of sample at 570 nm.

Seed analysis for antinutritional composition

Extraction of tannins and phytic acid

The tannin was extracted following the procedure of Schandrel (1970) and tannins were estimated as tannic acid acid equivalents. The phytic acid was extracted from the chickpea seeds by the method of Wilcox et al. (2000).

Extraction of total phenolic content (TPC)

Total phenolic contents were extracted and estimated as described by Swain and Hillis (1959). The chickpea seed powder was homogenised with 80% of methanol for 1 h. Filtered supernatant was then mixed by adding Folin-phenol reagent and sodium carbonate, and the absorbance was measured at 650 nm.

Fig. 1 Single seed representation of 215 chickpea mini-core accessions



Estimation of total flavonoid content

Total flavonoid of methanolic extract of chickpea seeds was determined by Khoo et al. (2013). The extract was dissolved in 2% aluminium chloride and incubated for 30 min at room temperature. The absorbance was measured at 414 nm. The total flavonoid content was estimated as quercetin equivalent (QE).

Extraction of lectin and hemagglutination assay

100 mg dry seed powder defatted twice with acetone (1:2 w/v) was kept in 1000 µl of 10 mM Tris-HCl,

containing 150 mM NaCl (pH 7.2). This mixture after stirring for 16 h, was centrifuged at 10,000 rpm for 20 min in cold and the supernatant was collected as a source of lectin.

The hemagglutination activity was determined using trypsinised rabbit erythrocytes. The fresh erythrocytes separated from plasma by centrifugation at 3000 rpm for 4 min at 5–10 °C and washed extensively with phosphate buffer saline (PBS). Finally, 3% suspension was prepared in PBS and the two-fold serial dilution was used to perform hemagglutination tests in microtitre plate (Liener 1962). The erythrocyte suspension was mixed with serially diluted lectin and agglutination was observed at room temperature.

The reciprocal of the highest dilution of the lectin that showed complete agglutination (titre) is the unit of hemagglutination activity (U). The specific activity is measured as hemagglutination per mg of protein.

Seed analysis for antioxidant composition

DPPH radical scavenging assay

Following the method of Bersuder et al. (1998), radical scavenging activity was determined. The chickpea seed powder (100 mg) was extracted in 2 ml methanol. 1 ml of supernatant was mixed with 3 ml of 0.1 mM DPPH and incubated for 30 min in dark. The absorbance was measured at 517 nm and ascorbic acid was used as a positive control. DPPH radical scavenging activity was calculated using the equation:

$$\text{DPPH}\% = (A_{\text{blank}} - A_{\text{sample}}) / (A_{\text{blank}}) \times 100$$

where A_{blank} is the absorbance of the control reaction and A_{sample} is the absorbance of sample.

In vitro protein digestibility

Employing a binary enzyme system that consisted of trypsin (14,600 U/mg) and α -chymotrypsin (48 U/mg), an in vitro protein digestibility was worked out. 5 ml of the enzyme cocktail preserved on ice was added to 50 ml of powdered seed suspension, adjusted to pH 8.0 using 1 M NaOH and kept at 37 °C incubation (Hsu et al. 1977). The change in pH was measured after ten min period ($\text{pH}_{10\text{min}}$) and percent in vitro protein digestibility (IVPD) was determined by following equation.

$$\% \text{ in vitro protein digestibility (Y)} = 210.464 - 18.103X,$$

where $X = \text{pH}$ of protein suspension after digestion (10 min) with binary enzyme cocktail.

In vitro starch digestibility

Following the method of Singh et al. (1982), in vitro starch digestibility (IVSD) was determined. Briefly, the chickpea flour suspensions was incubated for amylolysis in the presence of pancreatic amylase (1260 U/mg) suspension at 20 °C for 2 h. Thereafter, 2 ml of 3,5-dinitrosalicylic acid reagent was added to terminate the reaction and the mixture was heated for 5 min. The absorbance of the suspension was measured at 550 nm taking maltose as standard. IVSD was expressed as mg of maltose released per gram of sample on a dry weight basis.

Statistical analysis

The one way analysis of variance followed by Dunnett's correction post hoc analysis using XLSTAT 2013 was carried out to notice significant differences among the all genotypes. The multivariate principal component analysis and the similarity matrix was accessed by unweighted pair group method with arithmetic mean (UPGMA) using NTSYS pc 2.02.

Results and discussion

Chickpea is positioned as an essential pulse crop of the world due to its abundant vital nutritive values and health benefits to human beings. The breeders from all over the world at all times explore elite genotypes which can serve as donor parents. Therefore, the development of new cultivars with high protein and nutritionally balanced contents is an obligatory breeding objective (Kahraman et al. 2017). The nutrients and/or antinutrients propositions are essential parameters for ascertaining seed quality (Roy et al. 2010). Owing to this, nutritional (total proteins, total free amino acids) and antinutritional (tannins, phytic acid, total phenolic and flavonoids content) components of mini-core chickpea accessions were analysed. The values of means for all attributes in seeds comprising of the maximum and minimum along with the values of standard deviation were considered.

Total protein and free amino acid

The protein content of mini-core collected chickpea seeds is assorted in its composition. Total proteins observed to be in a range of 4.60–33.90%. The average content of total protein across all the accessions was observed to be 28.75%. The protein content of ICC-13599, ICC-9848, ICC-9942, ICC-4872, ICC-12968, ICC-2065, ICC-14831, ICC-12947, ICC-7819 and ICC-4533 accessions was observed higher in all 211 accessions. While, lowest protein content was found in ICC-11121 compared to four Indian national checks ICC-4948, ICC-4973, ICC-12968 and ICC-15996. The variation detected may be due to their places of origin and therefore referred as genetic.

Free amino acids were observed in a range of 0.092–9.33 mg/g across all the mini-core accessions. The average of free amino acids was found to be 6.21 mg/g. The maximum free amino acid contents were observed in ICC-1715 (9.33 \pm 0.31 mg/g). Out of 211 samples, 10 accessions ICC-1715, ICC-8058, ICC-4567, ICC-15802, ICC-10755, ICC-3946, ICC-6571, ICC-11879, ICC-7441, ICC-9755 contained highest than the average values across all the mini-core seed accessions while minimum was exhibited by

ICC-12307 (0.092 ± 0.1 mg/g) compared to four Indian national checks. Our results are consistent with those of Kaur et al. (2014) and Melki et al. (2017) who determined average of 24 mg protein content in chickpea. Consumption of chickpea seed provides crucial nutrients for sustainable life processes (Gupta et al. 2017). For example, human body needs amino acids owing to several biological activities *vis-à-vis* supports the cell metabolism and repairing of tissue. In addition, they form antibody against combating bacteria and viruses and play vital role in building nucleoproteins of RNA and DNA (Imura and Okada 1998). Seeds of pulses store protein in their development stages therefore mature seeds are enriched with high contents of protein and hence the total free amino acids.

Tannin and phytic acid

The average of tannic acids was found to be 56.64 mg/g across all the accessions. The maximum value was observed in ICC-2072 (189.63 ± 1.17 mg/g). Out of 211 samples, 10 accessions ICC-2072, ICC-16269, ICC-5639, ICC-2210, ICC-2242, ICC-3230, ICC-14098, ICC-2065, ICC-2919, ICC-4872 depicted higher than the average values across all the mini-core seed accessions while minimum was exhibited by ICC-13764 (0.232 ± 0.01 mg/g) compared to four Indian national checks.

The average phytic acid contents was found to be 0.91 mg/g across the mini-core chickpea accessions. The maximum phytic acid was found in ICC-7184 (4.06 ± 0.05 mg/g). Out of 211 samples, ten accessions ICC-7184, ICC-7819, ICC-13219, ICC-2990, ICC-12037, ICC-12947, ICC-11764, ICC-15610, ICC-1422, contained higher phytic acid while minimum was exhibited by ICC-5879 (0.009 ± 0.0 mg/g) compared to four Indian national checks ICC-4948, ICC-4973, ICC-12968, and ICC-15996.

The antinutritional properties of tannins affects the development of stable complexes with protein and vitamins. Tannins bind with the saliva proteins and mucosal membrane of the mouth during food mastication thus reducing digestibility of the proteins and carbohydrates (Vadivel and Janardhanan 2005). Kaur et al. (2014) reported 8.23 mg/g tannin content in chickpea seeds. Tannins provide resistance to enzymes for digestive degradation therefore did not get absorbed and transported to other tissues of the body. However, soaking and some of the thermal processes effectively releases free tannins as one of the means of their removal (Vidal-Valverde et al. 1994). From nutritional point of view, presence of even low levels of tannins is undesirable. In the present studies, total phytic acid content varied from 0.42 to 26.80 mg/g with an average value of 26.80 mg/g. Similar levels of tannin and phytate were observed by different authors (Alajaji and El-Adawy 2006; Xu et al. 2016).

In legumes, phytic acid is the chief storage form of phosphorous. The negatively charged phytate molecule of phytic acid binds to nutritionally essential divalent cations, such as iron, zinc, magnesium and calcium. Subsequently, the insoluble complexes are formed that makes the minerals inaccessible for absorption and utilization. The effects of phytic acid in humans are associated by its interaction with proteins, vitamins and minerals thereby restricting mineral bioavailability and also protein digestibility (Francis et al. 2001). Chickpea seeds are rich in micronutrients like folate, magnesium, zinc and iron also. There exists a significant diversity in iron content from 2.4 to 11 mg/100 g which may be due to genotype differentiation and environmental factors (Tan et al. 2017). Several methods such as germination, fermentation, soaking, dehulling, and cooking have been reported to improve the nutritional quality (Reddy et al. 1982).

Determination of total phenolic content (TPC) and total flavonoid content (TFC)

The TPC analysed by Folin-Ciocalteu is widely ranged across mini-core seeds and are represented in Table 1. In the present study, total phenolic content ranged 0.15–0.81 mg/g in all the accessions. ICC-5135 showed significantly highest (0.81 mg/g) content of total phenols while ICC-11944 revealed lowest (0.15 mg/g). Mini-core seeds of chickpea had significant content of phenolics, in consistent with the Kaur et al. (2014), who reported average phenolic contents of 0.51–1.17 mg/g. These differences attributed may be due to gene pool and origin. The antioxidant activities in grains are mostly attributed to the phenolic compounds (Yao et al. 2010). Compared to other legumes, Peng et al. (2008) observed that the mung bean extracts had the highest total phenolic contents. The phenols play vital role in deactivating metal ions. Moreover, the polyphenols also contribute as scavengers of hydroxyl and peroxyl radicals that control cardiovascular diseases (Luo et al. 2002).

Total flavonoid content of these accessions resulted in a range of 0.04–1.57 mg/g and with average of 0.33 mg/g. The minimum flavonoid content was possessed by gene accession ICC-2263 while maximum content was observed in ICC-8058 followed by ICC-8318, ICC-8195, ICC-14098, ICC-5845, ICC-2072, ICC-67, ICC-5878, ICC-13863 and ICC-12654 gene accessions respectively compared to four chickpea checks. Phenolics group present in the flavonoids afford unique stability for executing biological activity. The intake of flavonoids includes reduction in osteoporosis, diabetes, obesity and cancer prevention (Martin et al. 2017). Aforesaid accessions can therefore be recommended for as a parent for developing elite cultivars.

Table 1 Mini-core collection of chickpea accessions depicting seed composition variability

S.no.	Chickpea accession	Total protein (%)	Total free amino acid (mg/g)	Phytic acid (mg/g)	Tannic acid (mg/g)	Total phenolics (mg/g)	Total flavonoid (mg/g)	Lectin (HU/mg)	DPPH (% Inhibition)	In vitro protein digestibility (%)	In vitro starch digestibility (mg of maltose/g)
1	ICC-12824	16.5	7.29 ± 0.92	0.215 ± 0.02	43.82 ± 1.79	1.167 ± 0.08	0.404 ± 0.01	81.26	41.21 ± 0.52	71.08 ± 0.32	158.90 ± 2.11
2	ICC-12851	21.1	7.88 ± 0.57	0.149 ± 0.02	17.81 ± 0.72	1.287 ± 0.12	0.649 ± 0.07	48.5	44.03 ± 0.46	70.22 ± 1.33	181.09 ± 1.12
3	ICC-12866	13.9	1.73 ± 0.16	0.75 ± 0.03	29.93 ± 1.43	0.41 ± 0.90	0.65 ± 0.01	22.8	46.70 ± 0.69	70.48 ± 0.55	193.32 ± 4.94
4	ICC-12726	16.5	7.08 ± 0.31	0.241 ± 0.02	29.64 ± 1.44	0.884 ± 0.07	0.416 ± 0.02	62.06	41.21 ± 0.52	72.01 ± 1.24	181.26 ± 1.50
5	ICC-12654	12.2	8.46 ± 0.07	0.161 ± 0.02	23.28 ± 0.27	1.64 ± 0.01	0.751 ± 0.07	83.9	34.12 ± 1.21	70.62 ± 1.89	161.11 ± 1.22
6	ICC-12537	20.2	8.79 ± 0.07	0.159 ± 0.02	24.62 ± 1.08	0.97 ± 0.02	0.367 ± 0.03	101.38	47.18 ± 0.91	70.84 ± 0.67	114.96 ± 3.70
7	ICC-16261	13.1	7.96 ± 0.19	0.214 ± 0.01	82.89 ± 2.52	0.915 ± .03	0.597 ± 0.04	156.33	40.86 ± 1.24	71.01 ± 0.12	156.11 ± 2.29
8	ICC-16269	16.5	6.92 ± 0.47	0.199 ± 0.0	186.20 ± 0.63	1.204 ± 0.07	0.225 ± 0.01	124.12	43.13 ± 0.44	71.26 ± 1.53	186.96 ± 2.78
9	ICC-16374	11.6	6.92 ± 0.26	0.14 ± 0.02	74.75 ± 0.72	1.21 ± 0.09	0.525 ± 0.05	176.55	44.09 ± 1.90	70.86 ± 0.65	168.29 ± 4.12
10	ICC-16903	18.1	5.21 ± 0.26	0.208 ± 0.0	140.97 ± 0.90	1.291 ± 0.11	0.251 ± 0.03	56.5	48.91 ± 0.42	72.45 ± 1.46	187.66 ± 1.74
11	ICC-16796	23.9	5.38 ± 0.65	0.19 ± 0.01	78.88 ± 0.63	1.476 ± 0.02	0.407 ± 0.02	85.69	39.20 ± 1.10	70.20 ± 1.50	159.16 ± 2.45
12	ICC-16487	26.5	7.25 ± 0.22	0.297 ± 0.01	126.84 ± 0.99	1.559 ± 0.05	0.658 ± 0.04	77.28	41.82 ± 0.91	68.42 ± 1.05	212.64 ± 3.14
13	ICC-13863	22.2	6.75 ± 0.38	0.237 ± 0.0	56.04 ± 1.98	1.871 ± 0.05	0.787 ± 0.12	92.25	40.06 ± 0.24	70.11 ± 1.22	226.11 ± 1.52
14	ICC-13892	20.4	5.13 ± 0.54	0.162 ± 0.01	88.17 ± 5.67	1.218 ± 0.03	0.393 ± 0.04	100.39	43.11 ± 1.04	71.76 ± 1.43	177.17 ± 2.71
15	ICC-14051	16.1	6.58 ± 0.47	0.215 ± 0.01	45.67 ± 0.99	1.255 ± 0.03	0.273 ± 0.04	127.20	40.17 ± 1.90	71.49 ± 0.66	161.91 ± 3.52
16	ICC-14199	17.4	9.21 ± 0.31	0.226 ± 0.01	92.30 ± 2.25	1.23 ± 0.08	0.515 ± 0.00	117.70	41.19 ± 1.22	70.82 ± 1.92	197.62 ± 2.27
17	ICC-14077	26.1	5.42 ± 1.02	0.294 ± 0.0	139.82 ± 5.58	1.454 ± 0.05	0.700 ± 0.09	313.86	37.20 ± 1.36	71.04 ± 1.40	184.44 ± 3.28
18	ICC-14098	27.4	7.04 ± 0.58	0.152 ± 0.01	146.76 ± 0.27	1.256 ± 0.07	1.061 ± 0.04	74.7	29.12 ± 1.18	69.27 ± 1.56	176.19 ± 1.74
19	ICC-1915	25.3	6.63 ± 0.01	1.18 ± 0.03	35.66 ± 1.03	0.42 ± 0.90	0.42 ± 0.01	50.8	47.50 ± 0.69	70.28 ± 1.08	161.71 ± 1.90
20	ICC-1923	12.4	5.75 ± 0.54	0.101 ± 0.02	141.79 ± 3.51	1.814 ± 0.06	0.509 ± 0.00	330.32	49.11 ± 1.12	71.49 ± 1.26	118.65 ± 1.25

Table 1 continued

S.no.	Chickpea accession	Total protein (%)	Total free amino acid (mg/g)	Phytic acid (mg/g)	Tannic acid (mg/g)	Total phenolics (mg/g)	Total flavonoid (mg/g)	Lectin (HU/mg)	DPPH (% Inhibition)	In vitro protein digestibility (%)	In vitro starch digestibility (mg of maltose/g)
21	ICC-2065	31.2	5.38 ± 0.66	0.067 ± 0.01	145.93 ± 0.36	1.493 ± 0.12	0.542 ± 0.07	65.64	46.06 ± 1.10	70.10 ± 1.59	202.54 ± 2.48
22	ICC-2072	23.9	5.38 ± 0.81	0.02 ± 0.01	189.63 ± 1.17	1.531 ± 0.01	0.890 ± 0.04	85.69	41.82 ± 1.56	68.11 ± 1.23	206.15 ± 2.63
23	ICC-2210	26.5	6.96 ± 0.40	0.102 ± 0.01	179.96 ± 2.97	1.441 ± 0.05	0.170 ± 0.03	77.28	40.62 ± 1.48	70.04 ± 1.04	188.99 ± 3.68
24	ICC-2242	12.2	4.50 ± 0.33	0.209 ± 0.02	163.36 ± 1.08	1.313 ± 0.06	0.554 ± 0.05	83.9	42.51 ± 2.42	71.27 ± 1.49	171.19 ± 4.25
25	ICC-5639	28.6	3.17 ± 0.59	0.046 ± 0.01	185.81 ± 4.14	1.46 ± 0.03	0.443 ± 0.01	35.8	45.10 ± 2.10	70.46 ± 1.61	192.29 ± 2.46
26	ICC-5845	13.7	5.17 ± 0.88	0.039 ± 0.01	122.65 ± 3.15	1.688 ± 0.08	1.055 ± 0.18	149.48	42.39 ± 2.22	70.19 ± 1.92	141.21 ± 1.94
27	ICC-5878	16.9	6.33 ± 0.58	0.203 ± 0.01	109.41 ± 0.72	2.606 ± 0.05	0.813 ± 0.05	121.18	39.10 ± 2.36	71.18 ± 1.40	164.19 ± 2.41
28	ICC-5434	11.9	7.58 ± 0.07	0.11 ± 0.01	110.37 ± 0.90	1.592 ± 0.03	0.510 ± 0.06	172.10	29.12 ± 2.14	69.80 ± 1.44	196.41 ± 1.11
29	ICC-5504	17.1	7.96 ± 0.19	0.1 ± 0.02	112.60 ± 3.51	1.457 ± 0.02	0.176 ± 0.05	119.76	46.10 ± 1.29	70.20 ± 1.92	216.90 ± 3.22
30	ICC-5613	6.1	2.63 ± 0.08	0.67 ± 0.06	25.4 ± 1.00	0.46 ± 5.23	0.42 ± 0.01	13.45	46.16 ± 1.91	69.32 ± 0.81	96.66 ± 4.23
31	ICC-11664	14.4	5.67 ± 0.01	0.227 ± 0.03	107.95 ± 0.99	1.766 ± 0.04	0.231 ± 0.04	142.22	35.94 ± 0.35	74.24 ± 1.26	214.96 ± 1.36
32	ICC-11764	12.8	2.32 ± 0.13	1.2 ± 0.05	27.4 ± 1.03	0.29 ± 0.50	0.63 ± 0.01	11.79	29.7 ± 1.13	75.31 ± 0.66	123.84 ± 5.38
33	ICC-11627	26.1	6.46 ± 0.69	0.104 ± 0.0	84.92 ± 2.16	1.365 ± 0.06	0.125 ± 0.01	156.93	34.16 ± 1.05	69.12 ± 1.21	118.67 ± 2.12
34	ICC-11879	14.6	9.63 ± 0.54	0.195 ± 0.02	48. ± 0.09	1.496 ± 0.09	0.384 ± 0.12	35.06	34.23 ± 1.08	73.19 ± 1.16	132.14 ± 1.77
35	ICC-11944	18.2	4.48 ± 0.11	0.83 ± 0.05	32.52 ± 2.10	0.15 ± 2.32	0.69 ± 0.05	8.68	46.16 ± 0.11	71.19 ± 0.83	284.6 ± 4.67
36	ICC-12028	26.4	10.08 ± 0.83	0.114 ± 0.01	24.3 ± 3.33	1.747 ± 0.04	0.351 ± 0.04	19.3	47.26 ± 1.54	59.45 ± 0.14	126.43 ± 2.19
37	ICC-8195	12.6	6.21 ± 0.89	0.145 ± 0.01	49.87 ± 0.72	1.529 ± 0.11	1.090 ± 0.01	9.6	35.72 ± 1.75	71.69 ± 1.80	204.62 ± 2.60
38	ICC-8261	28.4	11.00 ± 0.13	0.115 ± 0.01	35.81 ± 1.98	1.483 ± 0.07	0.510 ± 0.11	36.05	31.29 ± 2.18	72.19 ± 1.06	236.67 ± 2.78
39	ICC-8318	13.3	5.92 ± 0.51	0.055 ± 0.0	27.99 ± 4.41	1.267 ± 0.11	1.373 ± 0.08	76.99	39.26 ± 1.07	69.40 ± 1.42	197.34 ± 2.08
40	ICC-8151	16.7	6.38 ± 0.45	0.146 ± 0.01	52.1 ± 2.97	1.045 ± 0.07	0.572 ± 0.02	15.3	36.22 ± 1.08	73.10 ± 0.96	168.42 ± 2.44
41	ICC-8058	13.6	9.38 ± 0.50	0.168 ± 0.02	86.64 ± 5.94	1.542 ± 0.14	1.569 ± 0.09	106.4	42.11 ± 1.29	70.27 ± 0.63	284.6 ± 4.67
42	ICC-7867	19.1	19.38 ± 1.13	0.2 ± 0.01	89.63 ± 0.45	1.248 ± 0.04	0.424 ± 0.16	6.7	45.44 ± 1.71	71.64 ± 0.48	92.81 ± 2.60
43	ICC-7323	9.6	2.31 ± 0.07	1.03 ± 0.15	13.96 ± 1.50	0.41 ± 1.11	0.69 ± 0.02	9.21	45.53 ± 0.11	71.52 ± 0.56	263.83 ± 2.77
44	ICC-7441	18.2	9.67 ± 0.26	0.308 ± 0.01	36.07 ± 1.35	1.584 ± 0.03	0.172 ± 0.02	28.13	43.53 ± 1.63	70.06 ± 0.32	198.19 ± 1.38
45	ICC-7554	15.6	21.21 ± 0.63	0.236 ± 0.02	108.84 ± 1.26	1.933 ± 0.01	0.184 ± 0.01	16.4	44.74 ± 1.60	71.33 ± 0.16	233.47 ± 2.18
46	ICC-7571	29.8	11.79 ± 0.44	0.241 ± 0.02	34.12 ± 1.54	1.534 ± 0.07	0.490 ± 0.04	17.18	35.32 ± 1.82	71.41 ± 0.61	214.92 ± 2.46
47	ICC-7668	14.6	2.42 ± 0.11	0.78 ± 0.06	17.03 ± 0.82	0.43 ± 2.23	0.54 ± 0.01	11.46	35.56 ± 0.65	72.73 ± 0.56	148.96 ± 2.47
48	ICC-7819	30.5	2.61 ± 0.10	2.39 ± 0.03	22.42 ± 0.90	0.43 ± 0.70	0.71 ± 0.05	8.79	33.03 ± 1.28	72.36 ± 0.95	126.91 ± 3.52
49	ICC-3776	18.9	15.75 ± 0.43	0.368 ± 0.01	114.76 ± 3.15	1.597 ± 0.04	0.209 ± 0.00	27.08	41.74 ± 2.23	71.10 ± 0.12	117.38 ± 1.82

Table 1 continued

S.no.	Chickpea accession	Total protein (%)	Total free amino acid (mg/g)	Phytic acid (mg/g)	Tannic acid (mg/g)	Total phenolics (mg/g)	Total flavonoid (mg/g)	Lectin (HU/mg)	DPPH (% Inhibition)	In vitro protein digestibility (%)	In vitro starch digestibility (mg of maltose/g)
50	ICC-3946	14.7	9.46 ± 0.52	0.225 ± 0.02	70.74 ± 4.68	1.398 ± 0.03	0.187 ± 0.02	34.82	44.38 ± 2.11	71.43 ± 0.46	197.17 ± 2.44
51	ICC-4182	24.8	8.13 ± 0.45	0.298 ± 0.01	50.83 ± 5.04	1.212 ± 0.08	0.167 ± 0.05	58.38	35.29 ± 1.82	71.12 ± 0.28	209.02 ± 1.76
52	ICC-4418	17.4	9.33 ± 0.07	0.283 ± 0.01	83.40 ± 2.70	0.98 ± 0.08	0.199 ± 0.03	58.85	36.68 ± 1.43	68.73 ± 0.23	182.06 ± 2.27
53	ICC-4463	29.2	10.33 ± 0.07	0.249 ± 0.01	127.93 ± 6.93	1.208 ± 0.03	0.184 ± 0.03	17.53	31.63 ± 1.46	70.36 ± 0.95	138.01 ± 2.12
54	ICC-4495	26.2	1.84 ± 0.12	0.61 ± 0.03	18.28 ± 1.50	0.34 ± 1.30	0.3 ± 0.01	24.87	28.06 ± 0.90	69.44 ± 0.72	197.17 ± 4.23
55	ICC-13628	14.6	13.92 ± 1.35	0.261 ± 0.02	126.78 ± 2.25	1.256 ± 0.09	0.190 ± 0.01	35.06	42.34 ± 1.13	70.22 ± 0.40	127.58 ± 1.50
56	ICC-13764	17.2	10.38 ± 0.45	0.259 ± 0.04	0.232 ± 0.01	1.108 ± 0.06	0.321 ± 0.05	59.53	41.18 ± 2.01	70.21 ± 0.18	177.07 ± 2.35
57	ICC-13816	21.5	14.17 ± 2.89	0.31 ± 0.01	108.59 ± 0.54	1.343 ± 0.12	0.218 ± 0.25	5.95	39.92 ± 1.26	68.11 ± 0.34	219.04 ± 1.56
58	ICC-13523	18.3	13.25 ± 0.90	0.228 ± 0.01	64.76 ± 7.11	1.469 ± 0.1	0.685 ± 0.04	6.99	34.60 ± 1.48	70.09 ± 0.17	189.06 ± 2.17
59	ICC-13524	26.1	7.33 ± 0.76	0.314 ± 0.01	30.79 ± 6.66	1.218 ± 0.02	0.436 ± 0.01	4.90	35.63 ± 1.06	70.28 ± 0.18	137.01 ± 1.49
60	ICC-13599	33.9	2.21 ± 0.12	0.91 ± 0.10	15.52 ± 1.12	0.44 ± 2.32	0.64 ± 0.03	37.30	38.12 ± 1.05	72.91 ± 0.56	45.63 ± 0.44
61	ICC-12037	9.3	2.32 ± 0.12	1.27 ± 0.06	34.96 ± 1.72	0.31 ± 0.61	0.35 ± 0.01	67.35	45.63 ± 0.29	69.65 ± 0.50	196.91 ± 4.28
62	ICC-12155	15.5	2.25 ± 0.13	0.243 ± 0.01	69.78 ± 2.52	1.276 ± 0.05	0.104 ± 0.00	8.25	46.70 ± 1.02	69.22 ± 1.41	144.26 ± 2.31
63	ICC-12299	16.9	1.83 ± 0.19	0.232 ± 0.01	106.55 ± 1.98	0.973 ± 0.02	0.109 ± 0.02	15.14	36.23 ± 1.43	70.14 ± 1.23	157.08 ± 2.43
64	ICC-12307	25.4	0.092 ± 0.1	0.211 ± 0.01	89.18 ± 0.82	1.296 ± 0.15	0.31 ± 0.01	39.09	36.54 ± 1.06	70.46 ± 0.84	179.21 ± 1.73
65	ICC-12328	20.9	1.74 ± 0.13	0.49 ± 0.05	31.93 ± 1.51	0.26 ± 4.63	0.7 ± 0.01	31.45	46.23 ± 0.45	69.69 ± 0.83	166.66 ± 4.94
66	ICC-12492	19.2	4.46 ± 0.19	0.106 ± 0.02	67.94 ± 3.51	1.074 ± 0.03	0.239 ± 0.01	6.66	41.22 ± 1.01	68.25 ± 1.45	143.12 ± 2.46
67	ICC-13357	15.1	2.42 ± 0.19	0.24 ± 0.02	69.78 ± 2.52	1.083 ± 0.13	0.372 ± 0.04	16.95	44.70 ± 1.14	69.18 ± 1.43	185.78 ± 1.27
68	ICC-13441	16.4	1.92 ± 0.19	0.191 ± 0.01	73.28 ± 0.27	1.185 ± 0.01	0.251 ± 0.03	15.60	36.02 ± 1.18	70.01 ± 1.42	247.04 ± 1.33
69	ICC-13461	24.2	5.71 ± 0.19	0.137 ± 0.02	139.19 ± 2.52	1.054 ± 0.04	0.409 ± 0.00	10.57	34.41 ± 1.46	70.29 ± 0.46	147.54 ± 1.98
70	ICC-16524	15.1	1.79 ± 0.19	0.257 ± 0.01	50.38 ± 2.16	1.171 ± 0.05	0.148 ± 0.04	16.95	46.23 ± 1.59	70.02 ± 0.51	189.19 ± 1.01

Table 1 continued

S.no.	Chickpea accession	Total protein (%)	Total free amino acid (mg/g)	Phytic acid (mg/g)	Tannic acid (mg/g)	Total phenolics (mg/g)	Total flavonoid (mg/g)	Lectin (HU/mg)	DPPH (% Inhibition)	In vitro protein digestibility (%)	In vitro starch digestibility (mg of maltose/g)
71	ICC-13219	7.5	4.82 ± 0.10	1.46 ± 0.49	34.48 ± 0.80	0.40 ± 1.13	0.53 ± 0.01	53.18	47.36 ± 2.62	68.55 ± 0.77	133.32 ± 5.12
72	ICC-13283	18.4	2.75 ± 0.13	0.181 ± 0.01	41.86 ± 4.95	1.306 ± 0.08	0.191 ± 0.03	13.91	40.17 ± 1.21	71.16 ± 1.47	116.19 ± 1.82
73	ICC-12916	21.3	1.63 ± 0.13	0.139 ± 0.01	65.71 ± 0.90	1.223 ± 0.16	0.215 ± 0.00	48.07	41.40 ± 1.34	68.18 ± 0.32	147.12 ± 1.40
74	ICC-12928	7.4	2.25 ± 0.13	0.183 ± 0.02	29.64 ± 4.14	1.127 ± 0.07	0.115 ± 0.00	138.37	35.12 ± 1.26	70.29 ± 0.18	134.26 ± 2.44
75	ICC-12947	30.8	1.91 ± 0.08	1.26 ± 0.04	31.35 ± 1.10	0.48 ± 1.20	0.41 ± 0.04	11.36	34.93 ± 0.4	69.39 ± 0.63	138.71 ± 1.17
76	ICC-13077	16.5	3.17 ± 0.19	0.248 ± 0.01	53.31 ± 0.36	1.102 ± 0.02	0.182 ± 0.01	87.7	41.54 ± 1.23	68.76 ± 0.98	164.21 ± 1.14
77	ICC-13124	20.4	10.63 ± 0.63	0.16 ± 0.01	62.15 ± 2.88	1.222 ± 0.1	0.130 ± 0.01	70.91	42.20 ± 1.33	70.29 ± 1.29	171.04 ± 1.20
78	ICC-13187	19.4	6.83 ± 0.44	0.13 ± 0.01	62.40 ± 7.29	1.365 ± 0.07	0.146 ± 0.04	74.63	37.72 ± 1.17	70.02 ± 0.51	136.82 ± 1.90
79	ICC-14831	31.1	2.23 ± 0.13	0.86 ± 0.02	29.56 ± 0.81	0.44 ± 0.71	0.36 ± 0.01	42.27	34.45 ± 0.96	72.69 ± 0.44	131.27 ± 1.60
80	ICC-15264	11.4	14.46 ± 0.40	0.13 ± 0.01	50.89 ± 1.17	1.182 ± 0.1	0.188 ± 0.00	127.01	46.16 ± 1.21	70.26 ± 1.24	152.14 ± 2.41
81	ICC-15294	19.3	6.79 ± 0.38	0.213 ± 0.0	31.17 ± 2.25	1.188 ± 0.09	0.113 ± 0.01	75.02	41.27 ± 1.94	69.17 ± 0.12	142.09 ± 1.72
82	ICC-15333	17.4	11.71 ± 0.62	0.162 ± 0.02	48.98 ± 4.23	1.049 ± 0.05	0.167 ± 0.02	58.8	42.30 ± 2.46	71.80 ± 0.81	155.34 ± 2.30
83	ICC-15406	27.2	8.04 ± 0.26	0.172 ± 0.01	79.58 ± 0.54	0.768 ± 0.07	0.376 ± 0.04	37.64	39.26 ± 1.89	69.07 ± 0.64	106.01 ± 2.19
84	ICC-15435	21.5	8.13 ± 0.38	0.101 ± 0.08	49.55 ± 1.80	1.3 ± 0.03	0.167 ± 0.03	33.6	34.34 ± 0.49	68.11 ± 0.94	147.08 ± 1.90
85	ICC-9643	10.8	6.83 ± 0.40	0.203 ± 0.1	27.93 ± 1.17	1.326 ± 0.09	0.172 ± 0.00	189.62	40.52 ± 1.64	70.15 ± 1.30	122.78 ± 2.29
86	ICC-9755	14.2	9.88 ± 0.25	0.289 ± 0.0	88.74 ± 2.70	1.329 ± 0.04	0.157 ± 0.01	101.97	41.68 ± 1.34	70.05 ± 0.10	179.45 ± 1.32
87	ICC-9848	33.7	2.10 ± 0.39	0.78 ± 0.03	35.23 ± 0.73	0.52 ± 2.71	0.2 ± 0.02	18.78	30.36 ± 0.94	72.40 ± 0.70	117.94 ± 1.93
88	ICC-9862	11.4	6.83 ± 0.26	0.245 ± 0.0	48.92 ± 1.26	0.932 ± .11	0.096 ± 0.01	44.9	31.45 ± 0.19	69.18 ± 0.29	177.24 ± 1.10
89	ICC-9895	16.2	13.04 ± 0.69	0.042 ± 0.0	50.70 ± 1.98	1.298 ± 0.14	0.152 ± 0.00	31.6	40.22 ± 1.24	70.11 ± 0.32	282.11 ± 2.01
90	ICC-9942	32.7	11.17 ± 0.44	0.125 ± 0.0	51.02 ± 2.61	1.458 ± 0.01	0.179 ± 0.00	7.82	41.91 ± 1.30	68.91 ± 0.19	148.62 ± 1.29
91	ICC-5879	22.3	9.21 ± 0.47	0.009 ± 0.0	45.48 ± 6.30	1.288 ± 0.1	0.516 ± 0.03	45.91	31.22 ± 2.11	71.02 ± 1.03	127.14 ± 1.30
92	ICC-6263	12.8	11.17 ± 0.73	0.146 ± 0.01	86.90 ± 3.87	1.31 ± 0.05	0.425 ± 0.15	80	40.52 ± 2.45	69.22 ± 1.23	202.24 ± 2.01
93	ICC-6279	16.1	9.00 ± 0.45	0.188 ± 0.0	107.19 ± 2.52	1.171 ± 0.05	0.257 ± 0.04	63.6	41.81 ± 1.30	70.16 ± 0.11	136.28 ± 2.08

Table 1 continued

S.no.	Chickpea accession	Total protein (%)	Total free amino acid (mg/g)	Phytic acid (mg/g)	Tannic acid (mg/g)	Total phenolics (mg/g)	Total flavonoid (mg/g)	Lectin (HU/mg)	DPPH (% Inhibition)	In vitro protein digestibility (%)	In vitro starch digestibility (mg of maltose/g)
94	ICC-6293	30.2	11.00 ± 0.25	0.196 ± 0.0	34.35 ± 0.81	1.32 ± 0.01	0.115 ± 0.01	67.81	32.34 ± 0.94	71.28 ± 2.16	246.11 ± 1.46
95	ICC-6306	19.1	10.08 ± 0.44	0.2 ± 0.01	28.24 ± 4.59	1.14 ± 0.09	0.254 ± 0.00	53.61	35.05 ± 0.15	70.15 ± 0.32	195.39 ± 1.68
96	ICC-6537	13.9	10.46 ± 0.26	0.187 ± 0.01	43.70 ± 1.35	1.017 ± 0.02	0.373 ± 0.03	0.07	39.12 ± 1.35	71.41 ± 1.04	197.11 ± 2.09
97	ICC-6877	12.6	10.38 ± 0.57	0.18 ± 0.01	35.50 ± 1.08	0.942 ± 0.01	0.176 ± 0.02	20.31	40.11 ± 1.19	69.18 ± 0.21	244.21 ± 3.40
98	ICC-7184	11.3	2.42 ± 0.11	4.06 ± 0.05	19.51 ± 1.01	0.42 ± 0.90	0.27 ± 0.02	57.73	40.21 ± 0.86	70.92 ± 0.35	109.48 ± 3.79
99	ICC-7255	22.4	7.58 ± 0.44	0.187 ± 0.01	29.33 ± 1.98	1.241 ± 0.09	0.457 ± 0.01	91.42	30.74 ± 1.62	69.40 ± 0.92	157.44 ± 1.10
100	ICC-7272	12.6	8.25 ± 0.13	0.084 ± 0.01	70.36 ± 1.26	1.27 ± 0.01	0.088 ± 0.01	40.63	44.21 ± 1.73	70.27 ± 0.48	245.40 ± 2.18
101	ICC-7308	14.7	3.33 ± 0.19	0.206 ± 0.01	61.07 ± 3.78	1.212 ± 0.06	0.052 ± 0.00	69.65	44.31 ± 1.10	71.28 ± 2.14	186.08 ± 2.09
102	ICC-7315	25.4	10.38 ± 0.25	0.175 ± 0.01	71.44 ± 1.71	1.199 ± 0.02	0.339 ± 0.00	40.31	34.24 ± 0.14	70.15 ± 0.35	249.41 ± 1.06
103	ICC-8855	15.2	14.21 ± 0.36	0.245 ± 0.01	28.75 ± 3.69	1.379 ± 0.11	0.119 ± 0.03	134.73	41.52 ± 0.18	71.24 ± 1.15	197.91 ± 1.88
104	ICC-8950	18.1	2.79 ± 0.19	0.183 ± 0.01	44.66 ± 0.54	0.741 ± 0.06	0.199 ± 0.01	113.14	40.10 ± 1.39	69.25 ± 0.27	197.11 ± 1.09
105	ICC-9002	14.7	3.38 ± 0.25	0.185 ± 0.01	86.20 ± 2.88	1.585 ± 0.03	0.179 ± 0.01	69.65	41.56 ± 1.33	70.04 ± 1.51	232.01 ± 1.70
106	ICC-9137	13.5	1.43 ± 0.17	0.60 ± 0.02	25.75 ± 0.91	0.42 ± 1.10	0.37 ± 0.0	24.77	45.12 ± 1.55	68.34 ± 0.75	164.09 ± 2.36
107	ICC-9402	21.1	16.63 ± 0.45	0.137 ± 0.01	68.83 ± 1.17	1.303 ± 0.05	0.122 ± 0.02	194.12	41.22 ± 1.94	70.27 ± 0.46	189.04 ± 1.93
108	ICC-9586	13.1	3.21 ± 0.44	0.089 ± 0.01	46.95 ± 2.16	1.526 ± 0.17	0.143 ± 0.00	78.16	40.32 ± 1.56	71.01 ± 2.22	192.12 ± 3.16
109	ICC-11121	4.6	3.93 ± 0.16	1.08 ± 0.04	8.44 ± 0.61	0.30 ± 0.93	0.23 ± 0.0	17.25	28.66 ± 1.00	70.87 ± 0.28	167.94 ± 1.93
110	ICC-11198	12.1	1.46 ± 0.36	0.104 ± 0.01	23.98 ± 0.36	1.388 ± 0.02	0.103 ± 0.01	84.6	31.64 ± 1.43	71.24 ± 1.16	262.22 ± 6.01
111	ICC-11284	13.7	1.96 ± 0.52	0.107 ± 0.01	48.03 ± 4.77	1.223 ± 0.01	0.124 ± 0.02	37.37	46.21 ± 1.67	69.12 ± 0.26	156.42 ± 2.16
112	ICC-11378	14.5	5.75 ± 0.25	0.036 ± 0.0	33.27 ± 0.72	0.94 ± 0.12	0.130 ± 0.01	14.5	43.12 ± 1.44	70.14 ± 1.28	274.21 ± 1.40
113	ICC-11498	18.1	2.29 ± 0.19	0.036 ± 0.01	63.30 ± 3.06	1.464 ± 0.07	0.107 ± 0.03	56.57	40.30 ± 1.68	69.72 ± 0.29	196.28 ± 2.26
114	ICC-11584	19.4	1.75 ± 0.38	0.08 ± 0.02	65.46 ± 3.78	1.249 ± 0.03	0.170 ± 0.02	105.56	29.34 ± 1.00	71.10 ± 1.01	172.01 ± 2.71
115	ICC-15868	15.7	1.71 ± 0.11	0.88 ± 0.03	37.94 ± 1.60	0.72 ± 0.92	0.43 ± 0.03	41.58	43.56 ± 1.32	70.94 ± 0.24	214.09 ± 7.14
116	ICC-15888	15.1	2.21 ± 0.29	0.1 ± 0.0	88.30 ± 6.03	1.267 ± 0.1	0.225 ± 0.04	67.81	40.26 ± 1.34	69.02 ± 0.63	267.58 ± 2.38
117	ICC-16207	19.4	3.17 ± 0.31	0.077 ± 0.01	68.00 ± 2.52	1.207 ± 0.07	0.055 ± 0.01	74.63	41.10 ± 1.08	72.64 ± 1.31	270.36 ± 1.22
118	ICC-15618	16.7	11.00 ± 0.33	0.047 ± 0.01	88.93 ± 5.67	1.46 ± 0.1	0.210 ± 0.01	61.31	26.74 ± 2.19	69.72 ± 0.44	186.08 ± 2.52
119	ICC-15697	22.0	2.31 ± 0.12	0.82 ± 0.54	25.35 ± 0.60	0.21 ± 0.61	0.61 ± 0.02	30.14	45.02 ± 1.60	71.10 ± 1.01	87.17 ± 2.34

Table 1 continued

S.no.	Chickpea accession	Total protein (%)	Total free amino acid (mg/g)	Phytic acid (mg/g)	Tannic acid (mg/g)	Total phenolics (mg/g)	Total flavonoid (mg/g)	Lectin (HU/mg)	DPPH (% Inhibition)	In vitro protein digestibility (%)	In vitro starch digestibility (mg of maltose/g)
120	ICC-15802	11.2	9.42 ± 0.19	0.027 ± 0.0	49.24 ± 1.89	1.179 ± 0.05	0.331 ± 0.02	25.83	44.12 ± 2.01	70.20 ± 1.23	153.34 ± 2.18
121	ICC-15606	5.1	4.40 ± 0.10	1.03 ± 0.14	12.20 ± 0.80	0.18 ± 0.40	0.27 ± 0.01	15.92	29.73 ± 1.62	69.02 ± 0.63	171.53 ± 3.84
122	ICC-15610	12.8	2.20 ± 0.25	1.18 ± 0.05	13.44 ± 1.61	0.33 ± 1.10	0.42 ± 0.02	13.22	47.03 ± 0.46	71.36 ± 1.30	197.94 ± 3.63
123	ICC-15612	15.4	11.88 ± 0.54	0.047 ± 0.01	80.22 ± 3.69	1.592 ± 0.04	0.361 ± 0.04	94.02	39.04 ± 1.01	68.12 ± 0.34	236.10 ± 2.67
124	ICC-15510	16.2	14.18 ± 0.29	0.051 ± 0.01	88.30 ± 1.98	0.948 ± 0.04	0.104 ± 0.00	89.38	45.43 ± 1.44	70.62 ± 1.44	242.18 ± 3.09
125	ICC-15518	18.3	15.46 ± 0.51	0.019 ± 0.0	81.49 ± 0.54	1.148 ± 0.03	0.131 ± 0.03	158.25	27.83 ± 0.12	69.12 ± 0.89	174.25 ± 2.16
126	ICC-15567	22.5	10.75 ± 0.54	0.107 ± 0.02	30.03 ± 5.22	0.942 ± 0.06	0.385 ± 0.03	182.04	46.31 ± 0.66	71.04 ± 2.92	181.36 ± 1.48
127	ICC-14402	15.5	4.11 ± 0.13	0.89 ± 0.03	32.55 ± 0.82	0.24 ± 0.81	0.53 ± 0.02	11.32	44.13 ± 1.24	68.53 ± 0.95	185.63 ± 1.17
128	ICC-14595	20.8	13.75 ± 1.00	0.028 ± 0.0	38.87 ± 0.09	1.256 ± 0.01	0.090 ± 0.04	196.92	29.33 ± 1.02	70.26 ± 1.28	262.08 ± 2.19
129	ICC-14669	24.7	7.92 ± 0.01	0.076 ± 0.01	89.63 ± 3.60	0.862 ± 0.05	0.488 ± 0.05	165.82	41.01 ± 1.32	68.34 ± 0.96	199.49 ± 1.26
130	ICC-14778	6.1	2.43 ± 0.11	0.68 ± 0.04	15.96 ± 0.53	0.49 ± 0.61	0.52 ± 0.01	14.28	48.63 ± 1.50	70.75 ± 0.26	203.32 ± 3.46
131	ICC-14799	18.7	1.66 ± 0.10	4.15 ± 0.12	20.73 ± 0.73	0.23 ± 1.21	0.33 ± 0.0	8.93	45.70 ± 0.34	71.15 ± 1.08	204.09 ± 7.10
132	ICC-14815	14.4	2.40 ± 0.10	0.88 ± 0.03	40.42 ± 1.70	0.70 ± 1.23	0.41 ± 0.0	13.21	29.60 ± 0.45	76.22 ± 0.31	140.50 ± 4.37
133	ICC-6571	21.2	9.54 ± 0.26	0.042 ± 0.01	44.59 ± 3.06	1.093 ± 0.04	0.121 ± 0.02	48.30	35.33 ± 1.02	69.36 ± 0.15	118.42 ± 1.22
134	ICC-6579	14.6	19.58 ± 0.56	0.042 ± 0.0	27.42 ± 3.60	1.381 ± 0.02	0.187 ± 0.06	70.13	41.03 ± 0.67	70.17 ± 1.08	219.56 ± 2.27
135	ICC-6802	16.2	10.42 ± 0.31	0.128 ± 0.17	25.00 ± 0.27	1.523 ± 0.11	0.306 ± 0.07	63.20	39.91 ± 2.18	68.18 ± 0.96	223.99 ± 1.68
136	ICC-6811	18.4	11.75 ± 0.38	0.095 ± 0.01	21.37 ± 1.35	1.155 ± 0.03	0.200 ± 0.01	55.65	41.66 ± 1.47	70.16 ± 0.62	172.11 ± 1.27
137	ICC-6816	10.9	8.71 ± 0.64	0.084 ± 0.02	24.94 ± 2.88	1.013 ± 0.07	0.340 ± 0.05	93.94	32.30 ± 1.01	70.10 ± 1.11	190.15 ± 2.18
138	ICC-6874	20.0	1.60 ± 0.09	0.77 ± 0.04	26.90 ± 0.50	0.33 ± 0.31	0.13 ± 0.01	32.18	45.73 ± 0.63	71.05 ± 0.51	214.09 ± 1.17
139	ICC-4533	30.2	2.40 ± 0.10	0.85 ± 0.03	20.34 ± 0.72	0.46 ± 1.82	0.46 ± 0.04	45.28	32.90 ± 1.14	73.01 ± 0.57	87.68 ± 1.53
140	ICC-4567	21.6	9.42 ± 0.19	0.82 ± 0.04	29.39 ± 5.40	0.873 ± 0.07	0.372 ± 0.00	23.70	42.81 ± 1.32	71.28 ± 1.92	98.04 ± 1.47
141	ICC-4593	26.6	2.24 ± 0.12	0.81 ± 0.02	32.97 ± 1.31	0.23 ± 1.13	0.67 ± 0.02	95.40	43.31 ± 4.33	70.43 ± 0.66	185.12 ± 1.60
142	ICC-4639	17.1	10.58 ± 0.38	0.047 ± 0.0	44.85 ± 4.59	1.377 ± 0.07	0.267 ± 0.01	119.76	36.51 ± 2.44	69.01 ± 0.25	128.14 ± 1.24
143	ICC-4657	16.4	8.42 ± 0.71	0.024 ± 0.0	121.56 ± 2.16	1.265 ± 0.05	0.255 ± 0.00	62.43	40.24 ± 1.68	70.78 ± 1.89	181.06 ± 2.90

Table 1 continued

S.no.	Chickpea accession	Total protein (%)	Total free amino acid (mg/g)	Phytic acid (mg/g)	Tannic acid (mg/g)	Total phenolics (mg/g)	Total flavonoid (mg/g)	Lectin (HU/mg)	DPPH (% Inhibition)	In vitro protein digestibility (%)	In vitro starch digestibility (mg of maltose/g)
144	ICC-4814	13.4	6.75 ± 0.70	0.028 ± 0.0	66.79 ± 3.24	1.105 ± 0.13	0.243 ± 0.06	76.4	38.09 ± 1.51	69.24 ± 0.24	209.49 ± 1.63
145	ICC-67	17.4	4.05 ± 0.10	0.42 ± 0.03	21.62 ± 0.70	0.37 ± 0.52	0.86 ± 0.02	19.21	41.03 ± 0.23	70.76 ± 0.40	140.25 ± 4.50
146	ICC-95	16.6	4.75 ± 0.13	0.116 ± 0.01	20.67 ± 0.63	0.733 ± 0.03	0.073 ± 0.00	123.37	40.11 ± 1.28	71.32 ± 0.38	158.34 ± 1.49
147	ICC-283	13.1	4.33 ± 0.31	0.104 ± 0.02	33.97 ± 0.54	1.303 ± 0.02	0.336 ± 0.06	78.16	33.41 ± 2.03	68.01 ± 0.20	191.57 ± 2.18
148	ICC-440	16.7	4.46 ± 0.14	0.077 ± 0.01	49.36 ± 2.07	1.216 ± 0.05	0.224 ± 0.01	122.6	44.56 ± 1.04	71.82 ± 1.24	200.12 ± 1.70
149	ICC-456	18.2	5.08 ± 0.31	0.123 ± 0.01	43.58 ± 1.53	1.023 ± 0.09	0.267 ± 0.00	112.52	39.11 ± 1.52	69.40 ± 0.26	127.06 ± 1.40
150	ICC-506	25.1	1.81 ± 0.11	0.99 ± 0.12	30.16 ± 1.62	0.41 ± 1.10	0.12 ± 0.01	6.74	30.33 ± 0.66	72.73 ± 0.59	191.27 ± 4.23
151	ICC-2990	13.1	2.63 ± 0.09	1.42 ± 0.09	29.85 ± 1.51	0.47 ± 1.12	0.21 ± 0.01	7.64	30.98 ± 1.40	71.46 ± 0.78	176.91 ± 3.07
152	ICC-3218	15.7	4.92 ± 0.31	0.081 ± 0.01	93.51 ± 1.62	0.884 ± 0.04	0.201 ± 0.01	65.22	41.32 ± 1.21	71.11 ± 0.17	170.43 ± 0.78
153	ICC-3230	18.2	3.92 ± 0.31	0.083 ± 0.0	162.02 ± 6.48	0.854 ± 0.01	0.540 ± 0.03	56.26	38.08 ± 1.27	69.26 ± 0.36	199.85 ± 2.59
154	ICC-2884	14.0	5.58 ± 0.26	0.17 ± 0.0	89.63 ± 7.11	0.957 ± 0.03	0.448 ± 0.02	73.1	41.96 ± 0.45	72.25 ± 0.74	251.62 ± 1.80
155	ICC-2919	14.1	4.25 ± 0.45	0.1120.08	143.51 ± 5.13	0.873 ± 0.08	0.269 ± 0.00	72.62	40.38 ± 1.20	68.04 ± 0.20	172.60 ± 1.30
156	ICC-2969	17.6	5.17 ± 0.19	0.198 ± 0.01	126.84 ± 3.42	1.038 ± 0.09	0.316 ± 0.00	116.36	29.57 ± 1.22	71.12 ± 0.54	181.21 ± 2.61
157	ICC-4841	22.3	4.50 ± 0.33	0.121 ± 0.01	42.24 ± 3.06	0.822 ± 0.03	0.266 ± 0.01	91.8	46.62 ± 0.19	69.31 ± 0.84	178.22 ± 2.15
158	ICC-4872	31.4	5.58 ± 0.31	0.129 ± 0.0	141.92 ± 5.58	0.942 ± 0.03	0.327 ± 0.04	260.89	42.28 ± 1.51	68.02 ± 0.76	244.24 ± 1.29
159	ICC-4918	21.1	1.48 ± 0.11	0.87 ± 0.04	37.78 ± 1.63	0.33 ± 5.11	0.17 ± 0.01	15.31	31.23 ± 1.20	73.11 ± 0.67	157.17 ± 1.17
160	ICC-5135	28.7	2.42 ± 0.20	0.81 ± 0.03	32.33 ± 1.63	0.81 ± 2.73	0.3 ± 0.01	12.36	28.70 ± 0.52	68.26 ± 0.37	153.07 ± 1.53
161	ICC-5337	15.5	2.41 ± 0.22	0.89 ± 0.02	35.22 ± 2.02	0.22 ± 0.90	0.5 ± 0.01	41.24	47.06 ± 0.50	71.25 ± 0.94	207.17 ± 1.93
162	ICC-5383	21.6	4.38 ± 0.13	0.16 ± 0.0	23.85 ± 0.54	1.034 ± 0.06	0.355 ± 0.01	67.03	41.39 ± 1.86	69.54 ± 0.41	253.07 ± 2.44
163	ICC-8350	12.8	4.29 ± 0.44	0.091 ± 0.0	50.76 ± 1.89	1.101 ± 0.03	0.201 ± 0.01	80	38.30 ± 0.92	70.02 ± 0.57	217.18 ± 1.37
164	ICC-8384	17.9	2.36 ± 0.13	0.70 ± 0.06	31.01 ± 1.13	0.35 ± 1.00	0.35 ± 0.02	8.97	45.70 ± 0.51	68.44 ± 0.74	245.11 ± 6.93
165	ICC-8522	21.4	5.08 ± 0.69	0.162 ± 0.01	26.91 ± 2.43	0.838 ± 0.03	0.118 ± 0.01	47.85	42.19 ± 1.62	68.12 ± 0.86	222.48 ± 2.11
166	ICC-8607	12.9	5.67 ± 0.19	0.151 ± 0.01	84.29 ± 1.17	1.08 ± 0.14	0.360 ± 0.04	79.37	39.07 ± 0.69	70.44 ± 0.21	265.27 ± 4.34
167	ICC-8621	6.7	1.82 ± 0.10	0.85 ± 0.05	28.42 ± 0.80	0.28 ± 1.03	0.29 ± 0.0	12.44	45.33 ± 0.57	70.83 ± 0.41	120.76 ± 0.76
168	ICC-8740	14.4	2.30 ± 0.16	0.71 ± 0.04	40.84 ± 1.22	0.28 ± 1.02	0.2 ± 0.01	23.39	44.26 ± 0.05	70.86 ± 0.44	191.78 ± 3.55
169	ICC-10341	16.3	6.83 ± 0.31	0.183 ± 0.01	24.05 ± 2.70	0.995 ± 0.03	0.255 ± 0.06	125.64	46.92 ± 2.24	71.32 ± 1.32	211.76 ± 1.88
170	ICC-10393	19.5	9.13 ± 0.22	0.176 ± 0.02	26.02 ± 3.15	0.764 ± 0.17	0.154 ± 0.01	210.05	38.18 ± 1.73	70.04 ± 0.36	192.56 ± 1.40
171	ICC-10399	19.2	2.42 ± 0.15	0.78 ± 0.03	20.50 ± 0.41	0.61 ± 1.72	0.45 ± 0.0	201.41	44.80 ± 0.86	71.12 ± 0.90	121.02 ± 2.47
172	ICC-10755	22.3	9.46 ± 0.26	0.186 ± 0.01	33.40 ± 2.43	0.771 ± 0.18	0.225 ± 0.02	129.86	42.92 ± 2.44	71.28 ± 1.84	167.24 ± 1.45
173	ICC-10885	13.4	11.17 ± 0.85	0.158 ± 0.02	25.06 ± 2.79	0.844 ± 0.1	0.212 ± 0.08	152.83	38.10 ± 0.93	70.22 ± 0.64	234.56 ± 1.39

Table 1 continued

S.no.	Chickpea accession	Total protein (%)	Total free amino acid (mg/g)	Phytic acid (mg/g)	Tannic acid (mg/g)	Total phenolics (mg/g)	Total flavonoid (mg/g)	Lectin (HU/mg)	DPPH (% Inhibition)	In vitro protein digestibility (%)	In vitro starch digestibility (mg of maltose/g)
174	ICC-10945	15.8	7.25 ± 0.13	0.162 ± 0.01	60.37 ± 3.33	0.536 ± 0.1	0.212 ± 0.03	129.62	44.07 ± 0.41	70.61 ± 1.12	272.22 ± 2.30
175	ICC-637	20.5	7.29 ± 0.89	0.184 ± 0.01	108.27 ± 3.42	0.881 ± 0.07	0.193 ± 0.01	199.80	41.92 ± 1.22	71.33 ± 0.33	193.09 ± 1.33
176	ICC-708	22.9	9.13 ± 0.33	0.234 ± 0.03	25.76 ± 1.08	0.975 ± 0.04	0.279 ± 0.01	178.86	38.76 ± 1.92	69.48 ± 1.90	198.67 ± 1.77
177	ICC-762	26.2	6.79 ± 0.36	0.088 ± 0.01	29.96 ± 6.48	0.871 ± 0.12	0.110 ± 0.03	156.33	44.22 ± 0.46	70.12 ± 1.55	214.19 ± 3.41
178	ICC-791	24.1	4.38 ± 0.33	0.096 ± 0.0	34.10 ± 0.36	0.639 ± 0.07	0.157 ± 0.02	169.95	48.65 ± 1.05	71.36 ± 0.25	181.34 ± 1.78
179	ICC-867	18.8	5.79 ± 0.71	0.276 ± 0.02	81.11 ± 2.43	0.858 ± 0.08	0.166 ± 0.05	217.87	45.28 ± 1.48	70.38 ± 1.66	159.49 ± 1.93
180	ICC-1052	25.9	5.25 ± 0.25	0.226 ± 0.02	30.73 ± 4.86	0.979 ± 0.09	0.209 ± 0.05	158.14	39.81 ± 1.25	70.50 ± 0.84	162.61 ± 0.87
181	ICC-1083	29.0	8.46 ± 0.52	0.233 ± 0.02	32.32 ± 1.26	0.926 ± 0.09	0.301 ± 0.05	141.24	43.07 ± 1.74	71.54 ± 1.34	187.26 ± 2.56
182	ICC-1098	16.9	6.71 ± 0.38	0.301 ± 0.01	27.80 ± 3.15	0.759 ± 0.03	0.091 ± 0.01	121.18	41.46 ± 1.66	71.25 ± 1.55	129.28 ± 2.06
183	ICC-1161	21.4	8.46 ± 0.29	0.276 ± 0.02	51.15 ± 3.51	0.771 ± 0.07	0.264 ± 0.01	95.70	32.49 ± 1.94	71.05 ± 0.88	272.10 ± 2.33
184	ICC-1164	23.9	6.88 ± 0.38	0.226 ± 0.02	40.90 ± 2.52	1.098 ± 0.19	0.137 ± 0.01	60.58	37.19 ± 0.38	70.48 ± 0.62	121.02 ± 2.47
185	ICC-1180	18.4	8.42 ± 0.26	0.233 ± 0.02	31.81 ± 1.71	0.606 ± 0.01	0.297 ± 0.06	55.65	48.76 ± 1.18	70.62 ± 0.28	212.32 ± 2.65
186	ICC-1194	28.6	5.71 ± 0.52	0.301 ± 0.01	89.57 ± 1.71	0.543 ± 0.01	0.112 ± 0.02	286.43	41.12 ± 1.58	68.04 ± 1.34	196.08 ± 1.54
187	ICC-1205	21.2	5.50 ± 0.45	0.301 ± 0.01	87.72 ± 3.06	1.188 ± 0.04	0.336 ± 0.06	193.20	39.67 ± 1.92	70.23 ± 1.33	218.70 ± 1.70
188	ICC-1230	24.6	6.63 ± 0.38	0.301 ± 0.01	85.11 ± 5.94	0.878 ± 0.02	0.310 ± 0.00	83.25	42.62 ± 1.51	71.04 ± 0.25	234.96 ± 2.19
189	ICC-1356	20.2	5.58 ± 0.19	0.291 ± 0.02	63.61 ± 3.33	1.093 ± 0.08	0.361 ± 0.02	101.38	47.05 ± 1.42	70.25 ± 0.26	199.47 ± 1.82
190	ICC-1392	14.5	10.33 ± 0.63	0.311 ± 0.01	83.46 ± 5.49	0.764 ± 0.02	0.284 ± 0.05	141.24	46.81 ± 2.36	71.58 ± 0.29	167.58 ± 1.71
191	ICC-1397	21.4	5.58 ± 0.56	0.307 ± 0.01	112.66 ± 1.80	0.702 ± 0.05	0.239 ± 0.02	95.70	34.10 ± 1.20	72.11 ± 0.16	192.61 ± 0.88
192	ICC-1398	29.2	5.46 ± 0.14	0.213 ± 0.0	97.71 ± 1.35	1.188 ± 0.06	0.093 ± 0.03	70.13	41.75 ± 1.04	70.71 ± 0.28	188.16 ± 2.34
193	ICC-1422	26.1	1.82 ± 0.11	1.18 ± 0.03	27.66 ± 0.53	0.64 ± 1.81	0.3 ± 0.01	197.25	32.36 ± 0.32	71.11 ± 0.12	131.27 ± 1.77
194	ICC-1431	13.4	7.13 ± 0.25	0.2 ± 0.01	71.18 ± 3.51	0.775 ± 0.02	0.118 ± 0.01	216.11	40.11 ± 1.45	71.06 ± 0.10	236.48 ± 2.54
195	ICC-1510	20.1	6.42 ± 0.40	0.206 ± 0.02	49.30 ± 3.69	0.845 ± 0.04	0.112 ± 0.01	203.78	32.37 ± 1.67	70.24 ± 0.61	187.82 ± 1.32
196	ICC-1710	22.3	5.71 ± 0.31	0.181 ± 0.01	27.67 ± 5.67	1.024 ± 0.05	0.134 ± 0.04	183.67	41.12 ± 1.41	70.42 ± 0.46	208.10 ± 1.65
197	ICC-1715	19.1	9.33 ± 0.31	0.222 ± 0.01	26.91 ± 1.62	0.583 ± 0.01	0.152 ± 0.01	214.45	45.05 ± 1.26	68.11 ± 0.21	264.16 ± 2.46
198	ICC-1882	28.7	9.29 ± 0.44	0.241 ± 0.01	51.72 ± 1.35	0.819 ± 0.09	0.121 ± 0.01	285.43	49.11 ± 1.65	70.48 ± 0.96	268.90 ± 1.23
199	ICC-2263	19.8	4.08 ± 0.52	0.257 ± 0.01	26.53 ± 1.08	0.719 ± 0.03	0.042 ± 0.00	103.43	36.08 ± 1.11	70.79 ± 0.29	210.44 ± 1.45
200	ICC-2277	19.2	4.29 ± 0.07	0.211 ± 0.01	32.82 ± 2.43	0.731 ± 0.04	0.258 ± 0.04	53.33	40.70 ± 1.04	71.22 ± 0.32	190.41 ± 1.25
201	ICC-2507	16.6	5.08 ± 0.56	0.326 ± 0.01	30.15 ± 1.89	1.162 ± 0.02	0.125 ± 0.04	174.45	39.61 ± 1.31	70.16 ± 0.71	177.21 ± 2.17
202	ICC-2580	29.7	5.58 ± 0.31	0.67 ± 0.04	33.95 ± 1.20	0.27 ± 1.00	0.35 ± 0.02	21.47	29.72 ± 0.88	73.06 ± 0.80	136.14 ± 0.76
203	ICC-2629	29.2	4.46 ± 0.40	0.45 ± 0.01	27.10 ± 2.16	1.012 ± 0.06	0.172 ± 0.06	35.06	45.15 ± 2.54	71.24 ± 0.61	144.72 ± 1.24
204	ICC-2720	26.7	4.21 ± 0.31	0.198 ± 0.03	15.27 ± 2.16	0.884 ± 0.04	0.207 ± 0.01	76.70	35.83 ± 1.78	70.14 ± 0.46	298.39 ± 2.21
205	ICC-3512	15.3	5.50 ± 0.45	0.311 ± 0.01	75.13 ± 0.90	0.992 ± 0.05	0.197 ± 0.00	66.92	42.04 ± 1.45	69.21 ± 0.19	179.26 ± 1.11
206	ICC-3631	12.1	6.13 ± 0.57	0.14 ± 0.01	27.29 ± 3.78	1.575 ± 0.1	0.149 ± 0.03	119.66	36.10 ± 1.45	70.34 ± 0.28	234.67 ± 1.44

Table 1 continued

S.no.	Chickpea accession	Total protein (%)	Total free amino acid (mg/g)	Phytic acid (mg/g)	Tannic acid (mg/g)	Total phenolics (mg/g)	Total flavonoid (mg/g)	Lectin (HU/mg)	DPPH (% Inhibition)	In vitro protein digestibility (%)	In vitro starch digestibility (mg of maltose/g)
207	ICC-3761	21.7	7.13 ± 0.25	0.129 ± 0.02	22.65 ± 2.07	1.027 ± 0.04	0.173 ± 0.02	47.18	28.22 ± 1.02	70.46 ± 0.09	274.27 ± 2.39
208	ICC-3325	30.1	1.72 ± 0.11	1.09 ± 0.02	12.01 ± 0.51	0.45 ± 1.91	0.48 ± 0.03	122.93	40.26 ± 1.11	72.95 ± 0.92	167.42 ± 1.17
209	ICC-3362	25.4	5.75 ± 0.33	0.128 ± 0.0	107.95 ± 5.22	1.167 ± 0.03	0.145 ± 0.04	80.62	42.12 ± 1.25	70.62 ± 0.47	192.61 ± 1.31
210	ICC-3421	16.2	5.38 ± 0.25	0.174 ± 0.03	76.18 ± 1.40	0.903 ± 0.04	0.143 ± 0.01	89.38	33.60 ± 1.54	71.30 ± 0.10	218.66 ± 1.47
211	ICC-4948	20.9	5.50 ± 0.33	0.204 ± 0.03	92.56 ± 0.54	1.174 ± 0.0	0.122 ± 0.01	93.94	34.29 ± 1.26	72.99 ± 0.46	246.08 ± 2.58
212	ICC-4973	20.4	4.75 ± 0.13	0.129 ± 0.02	50.32 ± 1.80	0.836 ± 0.08	0.188 ± 0.04	70.98	41.61 ± 1.34	70.16 ± 0.24	281.56 ± 1.74
213	ICC-12968	31.4	4.46 ± 0.71	0.128 ± 0.00	69.02 ± 2.79	0.939 ± 0.06	0.436 ± 0.01	32.61	40.77 ± 1.69	72.31 ± 0.12	248.19 ± 2.19
214	ICC-15996	18.7	5.25 ± 0.22	1.10 ± 0.07	27.44 ± 1.01	1.098 ± 0.01	0.464 ± 0.04	8.88	29.93 ± 0.58	72.69 ± 0.78	240.52 ± 1.94
215	ICC-16915	22.4	5.71 ± 0.26	0.204 ± 0.02	28.69 ± 3.33	1.036 ± 0.04	0.330 ± 0.01	22.85	27.10 ± 1.10	72.21 ± 0.44	277.34 ± 1.49

DPPH radical scavenging activity

The antioxidant activity of mini-core accessions was experimented to highlight its radical scavenging performance. During the reaction, the hydroxyl group of the aromatic ring of phenol is substituted by donating the hydrogen atom (Zhang et al. 2011). DPPH free radical scavenging activity was observed in a range of 26.74–49.11%. The average content of free radical scavenging activity across all the accessions was observed to be 46.33%. Ten accessions was observed to be higher in all 211 accessions ICC-1882, ICC-1923, ICC-16903, ICC-1180, ICC-791, ICC-14778, ICC-1915, ICC-13219, ICC-12028 and ICC-12537. While, lowest in ICC-15618 compared to four Indian national checks.

The current results and those previously reported may attribute to differences in cultivated and core collected seed composition. The chickpea mini-core accessions represent both geographical and biological diversity leading to variations. Core and/or mini-core collections representing the reduced subsets of germplasm are effective in recognizing the accessions with desired agronomic traits (Upadhyaya and Ortiz 2001). Present results thus identify new sources of variation that can be used as a parent/functional food in agro-industry (Kaur et al. 2013). In summary, compared with other tested chickpea seeds ICC-14778 had higher antioxidant activity. Recently Quintero-Soto et al. (2018), investigated antioxidant activity in selected chickpea genotypes and observed that black seed desi chickpea contained highest scavenging activity.

Pulses with the high phenolic contents demonstrate highest antioxidant capacity. Antioxidant properties of food are widely believed to exhibit disease curing properties like cancer, diabetes, various respiratory diseases, eye diseases and schizophrenia (Cai et al. 2004). The above said accessions may be employed as good sources of antioxidants for improvement of nutraceutical properties.

Hemagglutinating activity

Lectins are diverse group of carbohydrate binding proteins distributed ubiquitously in plant species and are the subject of intense investigations. Lectins preferably binds to a transition ion, usually manganese and calcium, thus exhibiting metal chelating activity. The specific activity of lectin depicted in a range of 0.07–330.32 HU/mg (Table 1) possessing an average of 75.1 HU/mg. The representative hemagglutinating activity is displayed in Fig. 2. Minimum specific activity was observed in ICC-6537 while highest specific activity was possessed by ICC-1923 (330.32 HU/mg) followed by ICC-14077, ICC-1194, ICC-1882, ICC-4872, ICC-867, ICC-1431, ICC-1715, ICC-10393 and ICC-1510 respectively as compared to the four national checks.

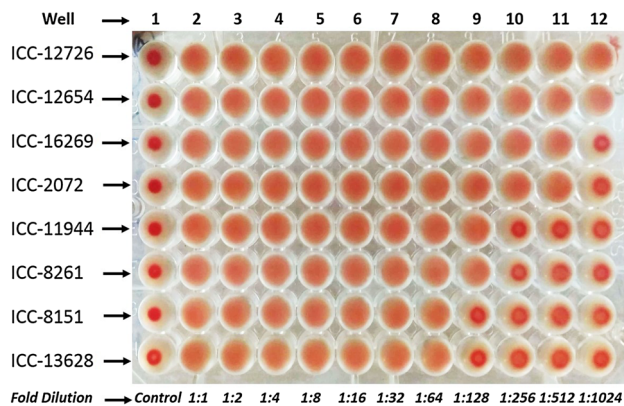


Fig. 2 Hemagglutinating activity of representative chickpea accessions. Well 1: Control, PBS (50 μ l) alone was added without protein. Hemagglutinating activity was checked by twofold serial dilution started from well 2 to 12. Minimum concentration of lectin required for hemagglutinating activity was found to be 7.1 μ g shown in 7 well. Whereas maximum hemagglutinating activity was revealed at 8.3 μ g up to 12 wells

Chickpea lectin demonstrate variation in agglutination activity to different human blood types (Roy et al. 2010). However, in the present study, only trypsin treated rabbit erythrocytes were able to agglutinate chickpea extract. This contradiction may be due to various features like cell surface interactions, lectin types and conditions of assay (Lis and Sharon 1986). Moreover, it has been reported that the seed type, harvesting time and area of cultivation can also bring change in the lectin concentration (Mekbungwan 2007). The amount of lectins vary significantly in legumes like kidney bean, soya bean and lima bean. In addition to nutritional properties, pulse lectin also exhibit potent clinical applications. For example, anti-HIV-1 reverse transcriptase activity was reported from kidney bean lectin (Zhang et al. 2009). To authors understanding, reports evaluating the lectin in chickpea core/mini-core collection was scanty. Compared to other legumes like pea and lentil, chickpea has lower lectin contents as revealed in the present study. Although scientific data has demonstrated that chickpea lectin has pharmacological properties *vis-à-vis* antifungal, antiproliferative (Gautam et al. 2018a; Kumar et al. 2014) and anti-HIV-1 reverse transcriptase activity (Gautam et al. 2018b).

Protein and starch digestibilities

In the present study, *in vitro* protein digestibility was observed in a range of 59.45–76.22%. The mean protein digestibility content in all the accessions was found to be 72.26%. The protein digestibility of ICC-14815, ICC-11764, ICC-11664, ICC-11879, ICC-4918, ICC-11879, ICC-2580, ICC-4533, ICC-4948 and ICC-3325 of these accessions were observed to be higher. While, lowest was

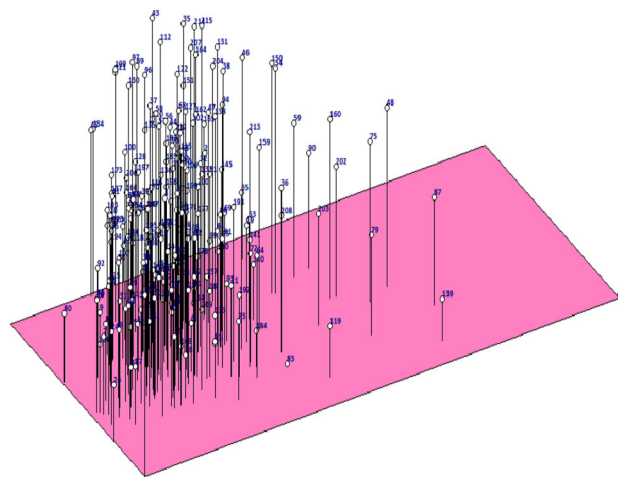


Fig. 3 Multivariate principal component analysis of 215 mini-core chickpea accessions based on evaluated parameters

observed in ICC-12028 in comparison to four Indian national checks.

In the present study, *in vitro* starch digestibility was observed in a range of 45.63–298.39%. The mean starch digestibility content among all the accessions was 252.81%. The starch digestibility of ten accessions viz. ICC-2720, ICC-8058, ICC-11944, ICC-9895, ICC-4973, ICC-169151, ICC-3761, ICC-11378, ICC-10945 and ICC-1161 were high. While, lowest was observed in ICC-13599 compared to four national checks ICC-4948, ICC-4973, ICC-12968 and ICC-15996.

The *in vitro* protein and starch digestibility constitutes an important indicator for physiological status of food samples. IVPD offers a hint for protein absorption whereas IVSD depicts the susceptibility of starch to digestive enzymes. Differences in seed coat and texture influence the digestibility. IVPD of desi chickpea is lower than kabuli due to high content of polyphenols that are present in the thick seed coats of desi chickpea (Singh and Jambunathan 1981). Also, IVPD of chickpea increases with fermentation period because of hydrolysis of seed storage proteins due to microbial proteases and possible break down of protease inhibitors (Xu et al. 2016). Another likely reason for increased IVPD might be due to reduced antinutritional factors where proteins are disrupted making the protein cross-linking more susceptible to proteolytic attack and thereby increasing their digestibility (Chitra et al. 1996). Chickpea protein has the highest digestibility amongst the dry edible legumes however, it can be enriched by cooking, roasting and autoclaving. The anti-nutritional factors like phytic acid and tannins inhibit the activity of α -amylase as a result decreasing the starch digestibility. Therefore, removal of anti-nutritional factors may contribute to enhancement of starch digestibility. It is well known that legume starch causes flatulence and discomfort to

enzymatic digestion. It is further recommended that the consumption of the whole legume seed containing dietary fibers are helpful in decreasing the intestinal transit time. In case of diabetes reduced digestibility is beneficial as it lowers the amount of glucose into the blood stream (Muhammad et al. 2007).

Similar observations of increase in IVPD in chickpea flour were reported by earlier investigators (Doke and Guha 2015). This feature of chickpea is desirable as an ingredient for making protein rich food formulations from industrial

perspective. Protein and starch digestibilities of core/mini-core collections of chickpea flour must be assessed in vivo to correlate with corresponding in vitro studies. Testing functional properties of chickpea flour (core/mini-core collections) is warranted for selection of donor parents.

PCA analysis and dendrogram

The principal component analysis of 215 mini-core chickpea accessions using the ten parameters viz., protein

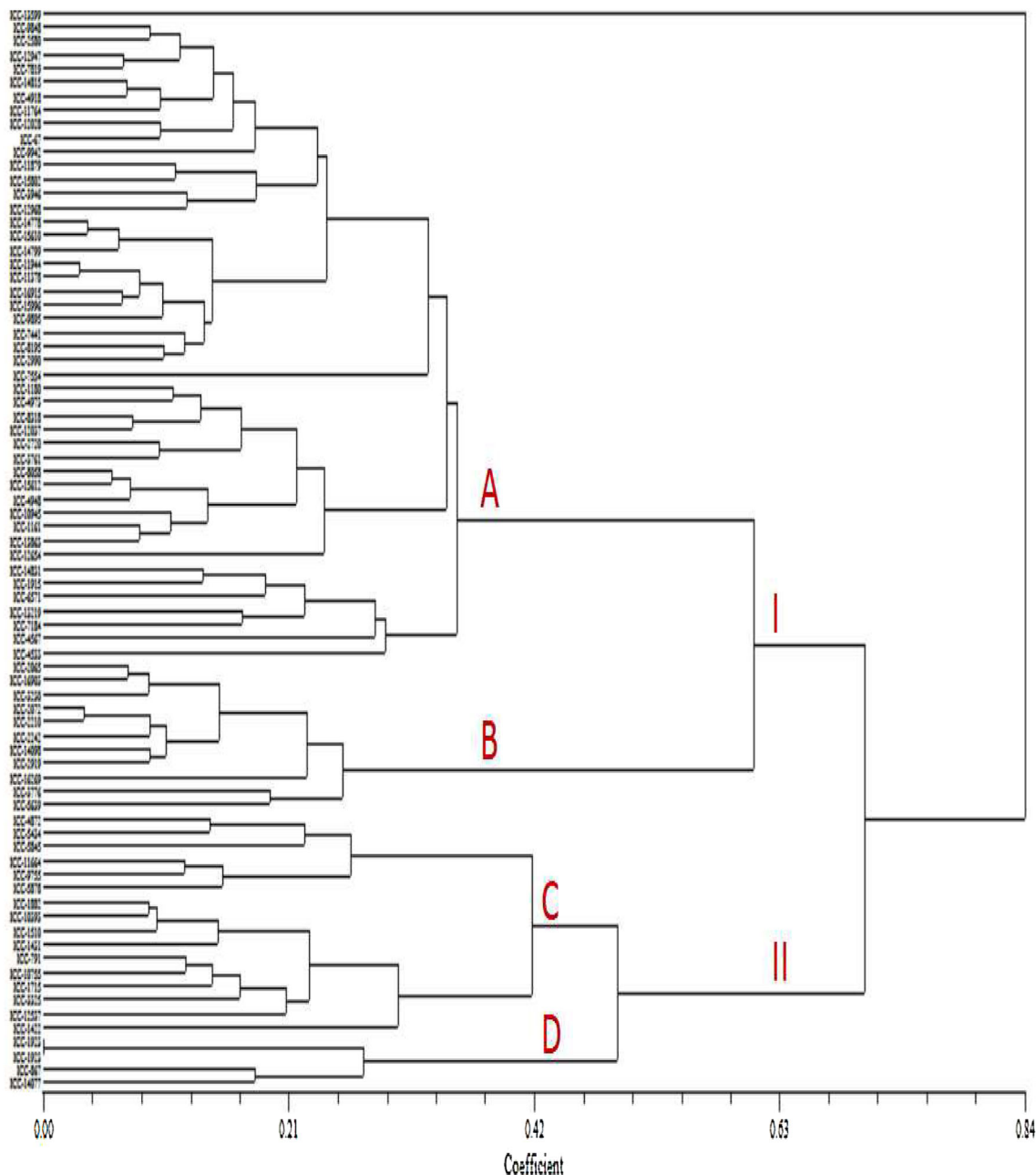


Fig. 4 Representative UPGMA dendrogram of 100 mini-core chickpea accessions of highest values for 10 experimeted parameters obtained using Pearson correlation coefficient. I and II are the major clusters; A and B sub-clusters of I; C and D sub-clusters of II

content, free amino acid, phytic acid, tannic acid, total phenols, total flavonoids, lectin specific activity, DPPH radical scavenging activity, IVPD and IVSD were studied. The PCA correlation depicted that the accessions viz., ICC-13599(60), ICC-9848(87), ICC-9942(90), ICC-14831(79), ICC-12947(75), ICC-7819(48), ICC-4533(139), ICC-4463(53), ICC-2580(202) and ICC-2629(203) possessed maximum protein content with lower levels of phenolics and flavonoid contents occupying specific position to the right side of the graph (Fig. 3). In contrast, the accessions viz., ICC-12851(2), ICC-7323(43), ICC-15264(80), ICC-9895(89), ICC-7272(100), ICC-15606(121), ICC-14778(130) and ICC-10885(173) occupied specific left position in the graph with maximum values for in vitro protein and starch digestibility. It was further noticed that accessions existing towards left of the figure showed maximum DPPH radical scavenging activity while those towards the right demonstrated maximum free amino acid contents.

The dendrogram derived from the 100 accessions which is showing highest values for 10 experimented parameters. Out of these, 12 accession showed equal values and therefore were not included in the dendrogram. The relationships among the chickpea accessions for above said parameters were graphed. The genetic similarity matrix was accessed by unweighted pair group method with arithmetic mean (UPGMA) (Fig. 4). The generated dendrogram distinguished into 2 clusters. The cluster-I subdivided into two clusters A and B, where first sub-cluster (A) was further subdivided into several small clusters that grouped chickpea accessions with maximum contents of protein (ICC-14831, ICC-13599, ICC-9843 etc.), free amino acids (ICC-7441, ICC-6571, ICC-3946 etc.), in vitro protein digestibility (ICC-11764, ICC-11879, ICC-4918 etc.), in vitro starch digestibility (ICC-2720, ICC-3761, ICC-8058 etc.). The sub cluster (B) consisted of accessions with high tannic acid content. Similarly the cluster-II was divided into 2 sub-clusters i.e. C and D. The sub cluster C possessed the chickpea accessions with high total phenolic content (ICC-5434, ICC-5845, ICC-1164) and DPPH radical scavenging activity (ICC-1882, ICC-791, ICC-3325, ICC-12537). While the other sub cluster D consisted of chickpea accessions possessing high lectin activity (ICC-867, ICC-14077). The accession ICC-13599 came as out group showing the maximum diversity. Thus, the dendrogram based information provides the existence of biochemical diversity among the mini-core lines of chickpea for these biochemical parameters.

Currently, chickpea crop improvement programmes are being pursued vigorously worldwide. Germplasm with enhanced nutrients needs to be recognised. There has been no recorded attempts to biofortify chickpea via mini-core approach. Present investigation may offer a guideline to the

breeders for designing biofortification strategies for chickpea. The elite trait specific accessions may be used for improving nutraceutical properties in chickpea, thus opening up new vista for further exploration.

Acknowledgements Ajay Kumar Gautam is grateful to University of Grants Commission (UGC), New Delhi for providing research fellowship under major research project (F.No. 40-154/2011 (SR)). Authors are also grateful to ICRISAT, Hyderabad, (A.P.) India for providing the seed samples. Dr. Sushma Tiwari, Scientist, Rajmata Vijayaraje Scindia Krishi Vishwa Vidyalaya, Gwalior is thankfully acknowledged for providing statistical software support.

Compliance with ethical standards

Conflict of interest No conflict of interest was reported by the authors.

References

- Alajaji AS, El-Adawy AT (2006) Nutritional composition of chickpea (*Cicer arietinum* L.) as affected by microwave cooking and other traditional cooking methods. *J Food Compos Anal* 19:806–812. <https://doi.org/10.1016/j.jfca.2006.03.015>
- Bersuder P, Hole M, Smith G (1998) Antioxidants from a heated histidine glucose model system I: investigation of the antioxidant role of histidine and isolation of antioxidants by high performance liquid chromatography. *J Am Oil Chem Soc* 75:181–187. <https://doi.org/10.1007/s11746-998-0030-y>
- Bhagyawant SS, Gupta N, Shrivastava N (2015) Biochemical analysis of chickpea accessions vis-a-vis; zinc, iron, total protein, proline and antioxidant activity. *Am J Food Sci Technol* 3(6):158–162. <https://doi.org/10.12691/ajfst-3-6-3>
- Cai Y, Luo Q, Sun M, Corke H (2004) Antioxidant activity and phenolic compounds of 112 traditional Chinese medicinal plants associated with anticancer. *Life Sci* 74:2157–2184. <https://doi.org/10.1016/j.lfs.2003.09.047>
- Chitra U, Singh U, Rao PV (1996) Phytic acid, *in vitro* protein digestibility, dietary fiber, and minerals of pulses as influenced by processing methods. *Plant Foods Hum Nutr* 49:307–316. <https://doi.org/10.1007/BF01091980>
- Doke S, Guha M (2015) Nutritional, physico-chemical and functional properties of ready-to-use chickpea and soybean flour. *Int J Food Nutr Sci* 4(5):2320–2376
- Fan TY, Sosulski FW (1974) Dispersibility and isolation of protein from legume flours. *Can Inst Food Sci Technol J* 7:256–259. [https://doi.org/10.1016/S0315-5463\(74\)73923-2](https://doi.org/10.1016/S0315-5463(74)73923-2)
- Francis G, Makkar HPS, Becker K (2001) Antinutritional factors present in plant-derived alternate fish feed ingredients and their effects in fish. *Aquaculture* 199:197–227. [https://doi.org/10.1016/S0044-8486\(01\)00526-9](https://doi.org/10.1016/S0044-8486(01)00526-9)
- Frankel OH (1984) Genetic perspective of germplasm conservation. In: Arber W, Illmensee K, Peacock WJ, Starlinger P (eds) *Genetic manipulation: impact on man and society*. Cambridge University Press, Cambridge, pp 161–170
- Gautam AK, Gupta N, Narvekar DT, Bhadkariya R, Bhagyawant SS (2018a) Characterization of chickpea (*Cicer arietinum* L.) lectin for biological activity. *Physiol Mol Biol Plants* 24(3):389–397. <https://doi.org/10.1007/s12298-018-0508-5>
- Gautam AK, Srivastava N, Nagar DP, Bhagyawant SS (2018b) Biochemical and functional properties of a lectin purified from

- the seeds of *Cicer arietinum* L. 3 Biotech 8:272. <https://doi.org/10.1007/s13205-018-1272-5>
- Gupta N, Shrivastava N, Bhagyawant SS (2017) Multivariate analysis based on nutritional value, antinutritional profile and antioxidant capacity of forty chickpea genotypes grown in India. *J Nutr Food Sci* 7(3):1000600. <https://doi.org/10.4172/2155-9600.1000600>
- Hsu HW, Vavak DL, Satterlee LD, Miller GA (1977) A multienzyme technique for estimating protein digestibility. *J Food Sci* 42:1269–1273. <https://doi.org/10.1111/j.1365-2621.1977.tb14476.x>
- Imura K, Okada A (1998) Amino acid metabolism in pediatric patients. *Nutrition* 14(1):143–148. [https://doi.org/10.1016/S0899-9007\(97\)00230-X](https://doi.org/10.1016/S0899-9007(97)00230-X)
- Kahraman A, Pandey A, Khan MK (2017) Nutritional diversity assessment in chickpea—a prospect for nutrient deprived world. *Harran J Agric Food Sci* 21(3):357–363
- Kashiwagi J, Krishnamurthy L, Upadhyaya HD, Krishna H, Chandra S, Vadez V, Serraj R (2005) Genetic variability of drought-avoidance root traits in the mini-core germplasm collection of chickpea (*Cicer arietinum* L.). *Euphytica* 146:213–222. <https://doi.org/10.1007/s10681-005-9007-1>
- Kaur K, Kaur N, Gupta AK, Singh I (2013) Exploration of the antioxidative defense system to characterize chickpea genotypes showing differential response towards water deficit conditions. *Plant Growth Regul* 70:49–60. <https://doi.org/10.1007/s10725-012-9777-0>
- Kaur N, Kumar A, Kaur K, Kaur S, Gupta AK, Singh I (2014) Abiotic stress tolerance of chickpea genotypes depends upon antioxidative potential and nutritional quality of seeds. *Proc Natl Acad Sci India Sect B Biol Sci* 85(2):615–623. <https://doi.org/10.1007/s40011-014-0382-z>
- Khoo HE, Azlan A, Ismail A, Abas F (2013) Response surface methodology optimization for extraction of phenolics and antioxidant capacity in defatted dabai parts. *Sains Malays* 42(7):949–954
- Kumar S, Kapoor V, Gill K, Singh K, Xess I, Das SN, Dey S (2014) Antifungal and antiproliferative protein from *Cicer arietinum*: a bioactive compound against emerging pathogens. *Biomed Res Int*. <https://doi.org/10.1155/2014/387203>
- Liener IE (1962) Toxic factors in edible legumes and their elimination. *Am J Clin Nutr* 11:281–298
- Lis H, Sharon N (1986) Lectin as molecules and as tools. *Annu Rev Biochem* 55:35–67. <https://doi.org/10.1146/annurev.bi.55.070186.000343>
- Lowry OH, Rosebrough NJ, Farr AL, Randall RJ (1951) Protein measurement with the phenol reagent. *J Biol Chem* 193:265–275
- Luo XD, Basile MJ, Kennelly EJ (2002) Polyphenolic antioxidants from the fruits of *Chrysophyllum cainito* L. (star apple). *J Agric Food Chem* 50:1379–1382. <https://doi.org/10.1021/jf011178n>
- Martin LP, Rangel MB, Zamarreno MMD (2017) Classification of lentils, chickpeas and beans based on their isoflavone content. *Food Anal Methods* 10:1191–1201. <https://doi.org/10.1007/s12161-016-0675-3>
- Mekbungwan A (2007) Application of tropical legumes for pig feed. *Anim Sci J* 78:343–350. <https://doi.org/10.1111/j.1740-0929.2007.00446.x>
- Melki M, Gasouri A, Bouhadida M, Chograni H, Rezgui M (2017) Phenotypic, genetic and biochemical characterization of five Tunisian varieties of chickpea. *J Agric Stud* 5(1):77–89. <https://doi.org/10.5296/jas.v5i1.10808>
- Moore S, Stein WH (1948) Analysis of amino acids. In: Colowick SP, Kaplan NO (eds) *Methods in enzymology*. Academic Press, New York, pp 468–471
- Muhammad ZH, Shahid I, Shakeel A, Muhammad I, Abdul N, Bhangar MI (2007) Nutritional and compositional study of desi chickpea (*Cicer arietinum* L.) cultivars grown in Punjab, Pakistan. *Food Chem* 105:1357–1363. <https://doi.org/10.1016/j.foodchem.2007.05.004>
- Pande S, Krishna Kishore G, Upadhyaya HD (2006) Identification of sources of multiple disease resistance in mini-core collection of chickpea. *Plant Disease* 90(9):1214–1218. <https://doi.org/10.1094/PD-90-1214>
- Parameshwarappa SG, Salimath PM, Upadhyaya HD, Patil SS, Kajjidoni ST (2012) Genetic variability studies in minicore collection of chickpea (*Cicer arietinum* L.) under different environments. *Karnataka J Agric Sci* 25(3):305–308
- Peng X, Zheng ZP, Cheng KW, Shan F, Ren GX, Chen F, Wang M (2008) Inhibitory effect of mung bean extract and its constituents vitexin and isovitexin on the formation of advance glycation endproducts. *Food Chem* 106:475–481. <https://doi.org/10.1016/j.foodchem.2007.06.016>
- Quintero-Soto MF, Saracho-Peña AG, Chavez-Ontiveros J, Garzon-Tiznado JA, Pineda-Hidalgo KV, Delgado-Vargas F, Lopez-Valenzuela JA (2018) Phenolic profiles and their contribution to the antioxidant activity of selected chickpea genotypes from Mexico and ICRISAT collections. *Plant Foods Hum Nutr*. <https://doi.org/10.1007/s11130-018-0661-6>
- Reddy NR, Sathe SK, Salunkhe DK (1982) Phytate in legumes and cereals. *Adv Food Res* 28:1–92. [https://doi.org/10.1016/S0065-2628\(08\)60110-X](https://doi.org/10.1016/S0065-2628(08)60110-X)
- Roorkiwal M, Jain A, Thudi M, Varshney RK (2017) Advances in chickpea genomic resources for accelerating the crop improvement. In: Varshney R, Thudi M, Muehlbauer F (eds) *The chickpea genome, compendium of plant genomes*. Springer, Cham, pp 53–67. https://doi.org/10.1007/978-3-319-66117-9_6
- Roy F, Boye JI, Simpson BK (2010) Bioactive proteins and peptides in pulse crops: pea, chickpea and lentil. *Food Res Int* 43:432–442. <https://doi.org/10.1016/j.foodres.2009.09.002>
- Saeed A, Darvishzadeh R (2016) Genetic diversity in a minicore collection of *Cicer* accessions using amplified fragment length polymorphism (AFLP). *Arch Agron Soil Sci* 62(12):1711–1721. <https://doi.org/10.1080/03650340.2016.1159302>
- Schandrel SH (1970) *Method in food analysis*. Academic Press, New York
- Serraj R, Krishnamurthy L, Upadhyaya HD (2004) Screening chickpea minicore germplasm for tolerance to soil salinity. *ICPN* 11:29–32
- Singh U, Jambunathan R (1981) Studies on desi and kabull chickpea (*Cicer arietinum* L.) cultivars: levels of protease inhibitors, levels of polyphenolic compounds and *in vitro* protein digestibility. *J Food Sci* 46:1364–1367. <https://doi.org/10.1111/j.1365-2621.1981.tb04176.x>
- Singh U, Kherdekar MS, Jambunathan R (1982) Studies on desi and kabuli chickpea (*Cicer arietinum* L.) cultivars. The levels of amylase inhibitors, levels of oligosaccharides and *in vitro* starch digestibility. *J Food Sci* 47:510–512. <https://doi.org/10.1111/j.1365-2621.1982.tb10113.x>
- Swain U, Hillis WE (1959) The phenolic constituents of *Prunus domestica*. I. The quantitative analysis of phenolic constituents. *J Agric Food Chem* 10:63–68. <https://doi.org/10.1002/jsfa.2740100110>
- Tan GZH, Das Bhowmik SS, Hoang TML, Karbaschi MR, Johnson AAT, Williams B, Mundree SG (2017) Finger on the pulse: pumping iron into chickpea. *Front Plant Sci* 8:1755. <https://doi.org/10.3389/fpls.2017.01755>
- Thudi K, Roorkiwal M, Kudapa H, Chaturvedi SK, Singh NP, Varshey RK (2017) An overview of chickpea research: from discovery to delivery. *Pulse India* 2(5):22–25
- Upadhyaya HD, Ortiz R (2001) A mini core subset for capturing diversity and promoting utilization of chickpea genetic resources in crop improvement. *Theor Appl Genet* 102:1292–1298. <https://doi.org/10.1007/s00122-001-0556-y>

- Upadhyaya HD, Yadav D, Dronavalli N, Gowda CLL, Singh S (2010) Mini core germplasm collections for infusing genetic diversity in plant breeding program. *Electr J Plant Breed* 1(4):1294–1309
- Upadhyaya HD, Dronavalli N, Dwivedi SL, Kashiwagi J, Krishnamurthy L, Pande S, Sharma HC, Vadez V, Singh S, Varshney RK, Gowda CLL (2013) Mini core collection as a resource to identify new sources of variation. *Crop Sci* 53(6):2506–2517
- Vadivel V, Janardhanan K (2005) Nutritional and antinutritional characteristics of seven Indian wild legumes. *Plant Foods Hum Nutr* 60:69–75. <https://doi.org/10.1007/s11130-005-5102-y>
- Varshney RK, Ribaut JM, Buckler ES, Tuberosa R, Rafalski JA et al (2012) Can genomics boost productivity of orphan crops? *Nat Biotechnol* 30:1172–1176. https://doi.org/10.1007/978-3-319-66117-9_6
- Vidal-Valverde C, Frias J, Estrella I, Gorospe MJ, Ruiz R, Bacon J (1994) Effect of processing on some antinutritional factors of lentils. *J Agric Food Chem* 42:2291–2295. <https://doi.org/10.1021/jf00046a039>
- Wilcox JK, Premchandra GS, Young KA, Raboy V (2000) Isolation of high seed inorganic P, low-phytate soybean mutants. *Crop Sci* 40:1601–1605. <https://doi.org/10.2135/cropsci2000.4061601x>
- Xu Y, Cartier A, Obielodan M, Jordan K, Hairston T, Shannon A, Sismour E (2016) Nutritional and anti-nutritional composition, and *in vitro* protein digestibility of kabuli chickpea (*Cicer arietinum* L.) as affected by differential processing methods. *J Food Meas Charact* 10(3):625–633. <https://doi.org/10.1007/s11694-016-9346-8>
- Yao Y, Sang W, Zhou MJ, Ren GX (2010) Phenolic composition and antioxidant activities of 11 celery cultivars. *J Food Sci* 75:C9–C13. <https://doi.org/10.1111/j.1750-3841.2009.01392.x>
- Zhang J, Shi J, Illic S, Jun XS, Kakuda Y (2009) Biological properties and characterization of lectin from red kidney bean (*Phaseolus vulgaris*). *Food Rev Int* 25:12–27. <https://doi.org/10.1080/87559120802458115>
- Zhang D, Chu L, Liu YX et al (2011) Analysis of the antioxidant capacities of flavonoids under different spectrophotometric assays using cyclic voltammetry and density functional theory. *J Agric Food Chem* 59(18):10277–10285. <https://doi.org/10.1021/jf201773q>