

Burning, biomass removal and tillage effects on soil organic carbon and nutrients in seasonal wetlands (Dambos) of Chiota smallholder farming area, Zimbabwe

Burning, Biomass Removal and Tillage Effects on Soil Organic Carbon and Nutrients in Seasonal Wetlands (Dambos) of Chiota Smallholder Farming Area, Zimbabwe

George Nyamadzawo^{ab*}, Menas Wuta^b, Justice Nyamangara^c, Philip Nyamugafata^b & Takesure Tendayi^b

^a Department of Environmental Science, Bindura University of Science Education, Bindura, Zimbabwe

^b Department of Soil Science and Agricultural Engineering, University of Zimbabwe, Harare, Zimbabwe

^c International Crops Research Institute for the Semi Arid Tropics, Matopos Research Station, Bulawayo, Zimbabwe

Published online: 28 Feb 2014

Archives of Agronomy and Soil Science

DOI: <http://dx.doi.org/10.1080/03650340.2014.892583>

This is author version post print archived in the official Institutional Repository of ICRISAT

www.icrisat.org

Burning, Biomass Removal and Tillage Effects on Soil Organic Carbon and Nutrients in Seasonal Wetlands (Dambos) of Chiota Smallholder Farming Area, Zimbabwe

George Nyamadzawo^{a,b*}, Menas Wuta^b, Justice Nyamangara^c, Philip Nyamugafata^b, Takesure Tendayi, T^b

^a Department of Environmental Science, Bindura University of Science Education, Box 1020, Bindura, Zimbabwe.

^b Department of Soil Science and Agricultural Engineering, University of Zimbabwe, Box MP167, Mount Pleasant, Harare, Zimbabwe.

^c International Crops Research Institute for the Semi Arid Tropics, Matopos Research Station, Box 776, Bulawayo, Zimbabwe.

* Corresponding author for Correspondence. E-Mail: gnyama@yahoo.com

Abstract

Seasonal wetland (dambo) cultivation in smallholder farming areas is important because it improves household food security. However, most farming practices such as burning of vegetation and conventional tillage in dambo gardens may reduce soil organic carbon (SOC) and nutrient dynamics. We evaluated the effects of simulated burning, vegetation clearing and clipping, and conventional tillage in dambo gardens on SOC, nutrient contents and biomass production over a three year period. The results showed that clearing and clipping of vegetation and conventional tillage reduced SOC, soil nutrient contents and biomass yields, while burning increased SOC and soil nutrient contents. For the 0-10 cm depth, conventional tillage, clearing and clipping resulted in a 37%, 34% and 18% decrease in SOC, respectively after 3 seasons, burning resulted in a 25% increase in SOC, while there were no changes in the control after 3 years. For the 0-40 cm depth the average change in SOC was 32%, 25%, 16% for conventional tillage, clearing and clipping respectively. Locally and regionally, conventional tillage, clearing, and clipping reduce SOC, nutrient contents, and biomass production in dambos. Though annual burning increased SOC and nutrient contents in the short-term, the long-term effects are uncertain, hence there is a need for long-term studies.

Keywords: dambo (seasonal wetland), conventional tillage, soil organic carbon, nutrient contents, biomass removal

Introduction

Dambos are seasonally saturated, grassy, gently sloping valley floors which are inundated for months during rainy seasons (Acres et al. 1985; Boast 1990). The physical potential of dambos in sub-Saharan Africa can conservatively be estimated at 135 million hectares (ha) (FAO 1998; SADC 2001), and estimates based on vegetation maps of Africa put dambo occupied landscapes at 20% of land surface of the elevated central African Plateau (Acres et al. 1985; Bullock 1992). In Zimbabwe, dambos occupy an estimated 1.28 million ha, (Whitlow 1985). In their natural state, dambos store significant amounts of SOC because they are saturated for a greater part of the year; hence they protect SOC from microbial

oxidation. As a result dambos have more SOC stocks when compared to most savanna ecosystems. Several researchers have reported average dambo SOC content ranging between 0 and 25 g kg⁻¹ among them Grant (1995); Bell et al. (1987); Bell and Roberts (1991); von der Heyden (2004) and Nyamadzawo et al.(2013b). The reported SOC contents in dambos are higher compared to average SOC contents in upland sites of 4-10.0 g kg⁻¹ (Bell and Roberts 1991; Grant 1995; Nyamadzawo et al. 2013b).

In Zimbabwe, seasonal wetlands (dambos) have experienced intensive cultivation over the past 30 years, as a response to climate-change and variability which have resulted in perennial crop failures in upland fields. In Malawi, Mloza-Banda (2005) suggested that low upland productivity partly influenced the exploitation of dambos. Dambos are a valuable resource for agricultural purposes due to their widespread occurrence, availability of soil moisture for long periods, and high fertility, thus they are an important resource especially in semi-arid to arid regions which are prone to droughts (McCartney et al. 2005; Mazambani 1982). In some smallholder farming areas of southern Africa farmers have actually abandoned cultivating uplands in preference to dambos because of poor yields which are a result of recurring droughts and low soil fertility (Mloza-Banda 2005; Kuntashula et al. 2006; Nyamadzawo et al. 2013c). In many developing countries, particularly in Africa, wetlands such as dambos have been perceived by some as the “new frontier” for agriculture (Woods 2009) as they provide a buffer against crop failures, in addition to their suitability to have multiple cropping in a single year. For poor rural households that are short of food, dambos can provide a life-saving safety net and provide a development opportunity which can lead them out of poverty (McCartney et al. 2010).

In cultivated dambos, prescribed burning, biomass removal using hoes or clipping and conventional tillage are frequently used (Nyamadzawo et al. 2013c) and these practices potentially affect SOC, soil nutrient contents and vegetation productivity. In dambo gardens, smallholder farmers burn to clear grasses in preparation for tillage. In addition, farmers burn to control pests and diseases and improve soil fertility. For herbaceous annuals, vigorous growth usually occurs after fires as fires release a portion of nutrient contents previously held

in plant biomass and quickly returns it to the soil and stimulate new growth (Shah 2012). While studies investigating the role of fire on soil carbon have been conducted in forested and grassland ecosystems, research in wetlands is limited, e.g., Medvedeff et al. (2003); Gu et al. (2008); Qian et al. (2009); Zhao et al. (2012) and these were mostly in temperate wetlands. There is no available data on the impacts of fires on SOC and soil nutrient contents in tropical wetlands, including seasonal wetlands (dambos) of central and southern Africa.

Besides biomass removal through burning, grazing and clipping are frequently used in dambos by smallholder farmers. Vegetation is often removed or cleared in preparation for conventional tillage using hoes, while sickles are often used for clipping vegetation. Removed biomass is used as fodder supplement which is carried to the livestock pens or is used as mulch in vegetable production, while some is burnt. Several studies have simulated the effects of biomass removal on wetland species. Matheson et al. (2002) reported reduced vegetation shoot and root growth one month following clipping in *Glyceria declinata* in New Zealand. In Australia, Crossle and Brock (2002) simulated grazing using clipping and observed that in some species biomass and reproduction increased, for some biomass decreased and reproduction increased, while for some, there was reduced biomass and reproduction following clipping. These changes to vegetative and reproductive output have the potential to alter SOC accumulation in the soil. However, there is no available literature on the effects of different biomass removal practices on SOC, soil nutrient contents, plant species diversity and biomass productivity in seasonal wetlands, especially in southern Africa.

A study by Nyamadzawo et al. (2013c) reported that in dambo gardens, 99% of the farmers cultivated their land either using an ox drawn plough (85%) or using the hoe for digging (14%). Cultivation exposes large SOC stocks stored in dambos to microbial oxidation and this increases SOC breakdown. Conventional tillage of dambos can potentially reduce SOC and nutrient contents of soils. Grant (1995) reported that dambo cultivation resulted in a 21-23% decline in SOC after cultivation for between four and seven years. Lal (2007) reiterated that the depletion of the SOC pool can be exacerbated by practices such as soil drainage, conventional tillage, biomass burning, and other processes. Even though some

farmers add manure to replace lost SOC and nutrient contents in dambo gardens, results from trials at Rothamstead suggested that large inputs of manures ($>35 \text{ t ha}^{-1} \text{ yr}^{-1}$) over long period of time (>100 years) may be required to observe an increase in SOC contents (Edmeades and Douglas 2003). Such high amounts of inputs are not available in the resource constrained smallholder farming areas.

In addition to reducing SOC in dambo gardens where conventional tillage is used, the major challenge is the increase in soil erosion (Dambo Research Unit 1987; Mharapara et al. 1998). During the colonial times in Zimbabwe, dambo cultivation was prohibited due to erosion hazards associated with their utilization (Rattray et al. 1953), and also because the land capability classification system of Zimbabwe places dambos in Class V, which denotes that, the soils are not suitable for cultivation (Ivy 1981). Currently, dambos continue to degrade at an alarming rate as their cultivation is intensified and farmers are encroaching on more fragile areas. Such encroachment through cultivation in the absence of technical guidance or traditional experience, which has since been forgotten by many, has further increased damage to the dambo ecosystem (Mharapara et al. 1998)

Although the cultivation of dambos brings significant benefits in terms of food security and income, poor cultivation practices can result in deleterious environmental impacts (e.g. reduced soil fertility, reduced biomass additions and reduced SOC, changes in vegetation species), which have negative consequences to livelihoods (McCartney et al. 2010). Disturbances from conventional tillage, fires, and other anthropogenic activities can modify the physical environment and alter plant species abundance (Vasey et al. 2005). The depletion of SOC pool has an adverse feedback mechanism as it increases atmospheric CO_2 concentrations. A severe depletion of the SOC pool leads to decline in soil quality, poor structural stability, negative water balance exacerbated by high losses caused by severe runoff, soil erosion and low species diversity. Decline in soil quality reduces net primary productivity (NPP), decreases the quality and quantity of biomass returned to the soil, and this further accentuates the depletion of SOC pool (Lal 2007). Therefore, understanding effects of farmer management practices on SOC, soil fertility, biomass production and changes in

species diversity is important if necessary interventions are to be put in place to avoid degradation of cultivated seasonal wetlands. Thus, the objective of this study was to evaluate the short term effects of biomass removal practices (burning, clearing, clipping) and conventional tillage on SOC, soil nutrient contents, biomass productivity and species composition in dambo gardens.

Material and Methods

Study Site

This study was carried out in Chiota smallholder farming area. Chiota is located 70 km south east of Harare (18° 05'S; 31° 11' E), receiving average rainfall between 700-800 mm with mean annual temperature of 18.6°C. The soil at the study site was classified as sandy loam soil (*Haplic Lixisols*) (FAO 2006) which is derived from granite. Dambos occupy an estimated 19 500 hectares (ha), which is 29.6% of land area (65 800 ha) in Chiota (Bell and Roberts 1991). Chiota is representative of dambos that are found throughout the central watershed of Zimbabwe. In the smallholder farming area of Chiota, mixed farming, which involves cropping and animal husbandry, is practiced. Livestock grazing is mainly concentrated in the uplands during the rainy season and dambos during the dry season, because in dambos the grass will continue growing using residual moisture. Dambos have three major functions which are; garden cultivation, pastures for grazing and water supply for both livestock and domestic use (Dambo Research Unit 1987).

Experimental design and soil sampling

The experiment was located in Kashumbamhere village, in Mr Ruseres' dambo garden which was approximately 1 ha. The garden was located in the mid-slope catena position of the dambo which is seasonally saturated (Dambo Research Unit 1987). The practices that were evaluated were identified during an earlier study which was carried out in 2010 (Nyamadzawo et al. 2013c). Plots of size 1 m x 3 m were established in 2010 in an area which was in its natural or fallow state and had not been tilled. Though small, the plots used were meant to simulate the practices used in farmer gardens. The farmer practices that were evaluated were

annual burning; clearing, clipping, and conventional tillage. Annual burning involved setting alight the vegetation in the plots during the fire season (August-November) when dambo vegetation is dry. Clearing involved the removal of all the vegetation from the plots using hoes and the biomass was removed from the plot. Clipping involved the cutting of vegetation using sickles at 5 cm above ground level and all the clipped biomass was removed. Clipping allowed re-sprouting of vegetation, while for clearing, there was complete removal of vegetation and there was no re-growth from previous vegetation. Conventional tillage involved digging up to 20 cm depth using a hand hoe. Under conventional tillage some of the vegetation was incorporated into the soil. In addition a control was also included, where vegetation was undisturbed and was left in its natural state. A randomised block design was used and all treatments were replicated three times (Figure 1). A distance of 1 m was allowed between blocks. A total of 60 samples were collected from the plots (4 depths x 5 treatments x 3 replicates), in 2010 for initial soil characterisation. Samples were collected from 0-10, 10-20, 20-30 and 30-40 cm depths using a Dutch auger. Soil samples were similarly collected 1, 2 and 3 years after establishment of the trial (2011, 2012, and 2013, respectively).

Sample analysis procedures

Soil characterization included analysis of SOC, nitrogen (N), available phosphorus (P) and exchangeable potassium (K), magnesium (Mg) and calcium (Ca). The samples were air dried before they were finely ground to pass through 2mm round hole stainless steel sieve for N, P and K determinations and further finely ground to pass entirely through 0.5 mm sieve for SOC determination. Soil organic carbon was determined using the modified Walkley-Black procedure (Nelson and Sommers 1992). Total nitrogen (N) was determined using the Kjeldahl method (Anderson and Ingram 1993) and available phosphorous (P), exchangeable Ca, Mg and K were all determined using the Merlich-3 method. Phosphorous was analysed using the Murphey and Riley method and color developed was read at 660 nm wavelength. Calcium and Mg were analysed using the atomic absorption spectrophotometer (AAS 50). Potassium was analysed using the flame photometer (Okalebo 1993). Soil texture was determined using the sedimentation hydrometer method (Bouyoucos 1962). Soil pH was measured using a

Mettler Toledo pH meter, in a 1:2 soil to deionised water suspension (Miller and Kissel 2010).

Total above ground standing biomass at the end of the rainy season was measured using 0.5 m by 0.5 m quadrants in April of 2013. Each plot was sampled by randomly throwing the quadrants into the plots. The plants within the quadrant were collected and separated according to species. The samples were then oven dried at 60°C for 48 hours, after which each sample was weighed. The different species were identified with the assistance of National Herbarium staff in Harare. The number of different species per quadrant was used to calculate species richness.

Data analysis

Analysis of variance (ANOVA) for SOC, nutrient contents and biomass production across different management practices were carried out using Genstat statistical package (SNV 2011). Separation of means was done using least significant differences procedure at $p < 0.05$ where there were significant treatment effects on the measured variables.

Results

Initial site characterisation classified dambo soils as sandy loam (*Haplic Lixisols*, FAO 2006) and the soil textural analysis showed that 74% was sand, 11% silt and 15% clay. The sand content ranged between 67.8% and 82.7% and increased with depth, while clay and silt content decreased with depth (up to 40 cm). The clay contents ranged between 9.1% and 19.2%, while silt was between 8.3% and 13.1%. The average pH was 5.4 and pH was not significantly different among treatments and depth. At the beginning of the experiment in 2010, the average dambo SOC content was 25.6 g kg⁻¹, and 143 Mg ha⁻¹ SOC stocks for the 0-40 cm depth. The initial SOC concentrations (in 2010) were 49, 36, 17 and 11 g kg⁻¹ for the 0-10, 10-20, 20-30 and 30-40 cm depths respectively (Table 1).

Dambo disturbance through conventional tillage, clearing using hoes and clipping of vegetation resulted in a decrease in SOC. Conventional tillage resulted in the highest percent decline in SOC (18%-37%) relative to the control (Table 2). Clearing resulted in between

14% and 34% decline in SOC after 3 years (Table 2). The greatest decline in SOC occurred in the first year (Figure 2b). However, SOC concentration under clipping and clearing were not significantly different from the cultivated treatment (Figures 2b-d). Annual burning over three years resulted in a significant increase in SOC for the 0 - 30 cm depth (Table 2). For 2011 and 2012, SOC concentrations were largely not significantly different among treatments, but significant differences were evident in 2013 (Figure 2b-d). For all treatments, SOC decreased with increasing depth (Figure 2a and Figure 4a). However, during the study period, there were no significant differences in SOC among treatments at the 30-40 cm depth (Figure 3a).

Concentrations of soil nutrient contents at the beginning of the experiment are shown in Table 1. Total N varied significantly ($p < 0.05$) among treatments and total N decreased with increasing depth (Figure 2b and 4b). Burning resulted in an increase in N concentrations and this was followed by clipping and clearing in the 2nd year (Figure 3b). In the 3rd year, burning still maintained higher N concentrations followed by conventional tillage (Figure 4b). The total N in the 2nd year (Figure 2b) was greater than that in the 3rd year (Figure 4b). Although in their natural state, dambos have low total N, cultivation resulted in a further reduction of total N. Nitrogen varied significantly with depth, and the highest N concentrations were in the 0-10 cm depth and least in the 30-40 cm depth (Figure 3b and 4b) as expected. Soil organic carbon had a good correlation with total nitrogen, $R^2 = 0.71$ (2nd year) and 0.67 (3rd year).

In the 2nd year, available P concentrations were significantly different ($p < 0.05$) among treatments (Figure 2c). In the 2nd year, tilled plots had higher P concentrations, compared to other treatments and there were significant differences among the 0-10, 10-20, 20-30 cm depths (Figure 3c). In the 3rd year significant ($p < 0.05$) differences among treatments were shown in the 0-10 cm depth. Burning had the highest P concentrations in the 0-10 cm depth, while conventional tillage and the control treatments were second with comparable P concentrations (Figure 4c). Phosphorus concentrations in the 0-10 cm depth of the burnt plot

increased from 2nd year to 3rd year. However, in the conventional tillage treatment P concentrations decreased from 2nd year to 3rd year (Figure 3c and 4c).

There were significant differences in exchangeable K concentrations among the treatments and the concentrations were highest in the burnt treatment in the 2nd year (Figure 3d). The same trend was also shown in the 3rd seasons, where K concentration in the burnt treatments was higher compared to the other treatments (Figure 4d). There were significant differences in K concentration among depths and the concentrations decreased with increasing depth (Figure 3d and 4d). For exchangeable Ca, the burnt and control treatments had significantly ($p < 0.05$) higher concentrations compared to other treatments in the 0-10 cm depth (Figure 2e and 4e). The Ca concentration decreased with increasing depth for both the 2nd and 3rd year. In the 3rd year, the Ca concentrations remained high under burning and conventional tillage treatments (Figure 4e) and there were significant ($p < 0.05$) differences between burnt and tilled treatments in the 0-10, 10-20 and 20-30 cm depths. In the 2nd year, exchangeable Mg showed the same trend as Ca, except for the 0 - 10 cm depth where there were significant differences among treatments. However, for Mg there were no significant differences in concentrations for the 20- 40 cm depth (Figure 3f). In the 3rd season, Mg concentrations were significantly ($p < 0.05$) higher in the burnt treatment and were followed by the control (Figure 4f). There were significant differences between treatments in the 0-10 and 10-20 cm depth (Figure 4f).

Our results showed that total aboveground biomass production at the end of the rainy season, which ended in April, was highest in the undisturbed dambo (control) with an average biomass yield of 20.9 t ha⁻¹ and this decreased significantly in plots which were burnt or which had biomass removed. The average biomass yields were 8.9, 4.9, 1.4 and 0.9 t ha⁻¹ for burnt, clipping, cleared, and ploughed treatments, respectively. Among the disturbed plots, the burnt plots had the highest biomass production compared to other treatments, while conventional tillage and clearing had the least biomass production. Although the disturbed treatments had more species diversity (Table 3), the overall biomass production decreased. Among the disturbed treatments, clearing had the highest species diversity and was dominated

by annuals. Although the species diversity increased in the disturbed treatments, biomass additions did not increase as most short lived annuals had low biomass production.

Discussions

In Chiota the soils are mainly sandy and are derived from granitic parent material. Textural analysis showed similar results to the soil catenary sequences that were investigated in earlier studies in Chiota (Bell and Roberts 1991; Nyamadzawo et al. 2013b). The sand content increased with increasing depth, while the clay and silt decreased with depth, and this could be attributed to the loss of clay through flowing water as depth increase from the soil surface, as dambos are zones of water transmission. The dambo soils at the study site were acidic, and this can be attributed to the loss of bases through leaching because of sandy texture which has low base retention capacity and this is a common trait in sandy dambo soils of Zimbabwe. The soil pH of the burnt treatments was not significantly different from other treatments possibly because the soil sampling for the determination of soil properties including pH was done 6 months after burning. Burning was carried out in October (peak of dry season); while soil sampling was carried out in April (end the end of the dry season). Miao et al. (2010) reported immediate pulsing in water pH after fires in the Florida Everglades. In addition, the area of burnt plots was small relative to the size of the whole dambo garden where water movement was not restricted; and therefore dilution effect from the rest of the dambo garden could have resulted in lack of significant increase in pH in the burnt plots.

Dambo cultivation, which is based on conventional tillage for land preparation, has been reported to result in a decline in SOC, and similar results were also reported by the Dambo Research Unit (1987). Studies on fertility of dambo soils by Grant (1995) also showed that continuous dambo cropping of maize resulted in a decline in SOC content. In southern Africa, conventional tillage mainly involving mouldboard conventional tillage using ox or donkey drawn plough, and digging using hand hoes often cause a decline in soil organic matter (Chuma and Haggmann 1995). In this study, the ploughed treatment lost more than a third of

the SOC in the 0-30 cm depth in just 3 years. Cultivation exposes the SOC stored in the dambo to microbial oxidation, thus increasing SOC breakdown. In the ploughed treatments there was an increase in the concentration of available P and this could be attributed to P mineralisation during SOC decomposition. The SOC depletion is generally higher for plough-based systems of seedbed preparation and in subsistence farming systems (Lal 2007). Besides the cultivation of dambos, other management practices, e.g., clearing and clipping also affected SOC and nutrient status of dambo gardens. Clearing resulted in a reduction in biomass and SOC addition to the soil, and soil nutrient contents that were similar to that of cultivated plots. Clearing, just like conventional tillage, removes all vegetation; as a result it had low biomass and SOC addition to the soil.

Our results showed that SOC was highest in the burnt plots in the 0-30 cm depth compared to other treatments. Results consistent with our findings were also reported by Pardini et al. (2004); Zhao et al. (2012) and Adeyolanu et al. (2013). High SOC in burnt treatments can possibly be due to that burning resulted in root die back and higher root turnover. Czimczik et al. (2005) and Oluwole et al. (2008) observed that more frequent burning and greater fire severity led to the increase of SOC due to the increased surface biomass and underground carbon pool from dead roots. Zhao et al. (2012) reported that fire increased wetland SOC immediately after burning, however the fire effect diminished with time, because fires increased the microbial metabolism in the post-burning period, resulting in higher carbon losses from the ecosystem compared to undisturbed ecosystem.

Adeyolanu et al. (2013) reported that burning resulted in an increase in the nutrient contents in Ibadan, Nigeria. This may suggest that burning is not only carried out to prepare land by farmers, but is also a practice to improve soil fertility status. Fire releases nutrients (N, P, K, Ca and Mg) held in plant biomass and returns it to soil (Shah 2012). Burning of vegetation for soil fertility improvement has been used in traditional agricultural systems such as shifting cultivation and Chitemene system in Zimbabwe and Zambia. During burning, all plant material that is not dry will die back, this will decompose and increase SOC and soil nutrient contents. Similar increases in soil nutrient contents, immediately after fire, were also

reported by Monleon et al. (1997) who reported that the increase in mineral soil nitrogen returned to the pre-burning level in a few years. In addition, burning stimulates new plant growth and produces higher biomass during the rainy season as plants exploit the post fire conditions of increased nutrient contents (Vasey et al. 2005). Though our results also showed that fire increased wetland soil SOC immediately after burning, the period it will take before a decline in SOC due to burning is recorded in dambos is currently unknown and this calls for long-term studies. Zhao et al. (2012) reported significantly higher SOC in burnt plots than in the unburnt during the second post burning growing season, but the difference in SOC level between burnt and unburnt plots, became smaller suggesting that this increase and benefits of burning may be short lived.

Although burning temporarily increases the soil fertility status, the cost to the environment is huge. Burning contributes considerably to the concentrations of greenhouse gases (GHG) such as carbon dioxide (CO₂) and nitrous oxide (N₂O). The Intergovernmental Panel on Climate Change (IPCC) attributes 17.3% of total anthropogenic emissions to biomass burning, making it the second largest source of GHGs from human activities after the burning of fossil fuel. Burning can cause significant N and C losses from seasonally dry ecosystems. During fires, soil nitrogen (N) may be lost through volatilisation at low temperatures (120°C) (Hart et al. 2005) though some studies, e.g., White et al. (1973) reported that N volatilisation occurred at temperatures >200 °C. In Zimbabwe, N₂O-N losses from burning were estimated to be 2.36 Gg yr⁻¹ (Chenje et al. 1998). Scholes and Andreae (2000) estimated annual emissions of 6.7 Gg for N₂O, 7.2 Tg for CO₂ and 0.008 Tg for methane (CH₄) from burning in Zimbabwe. The work by Chenje et al. (1998) and Scholes and Andreae (2000) also suggested that burning is the single largest contributor to atmospheric N₂O and CO₂ during the dry season in Zimbabwe and in southern Africa, respectively. In addition, fires can also cause losses of nutrients through ash, wind erosion, and surface runoff (Whitlow 1985). In addition, one of the most important ecological effects of burning is the increased probability of further burning in subsequent years as dead vegetation fall to the ground (van Wilgen 2009). At the regional and local level, fires lead to change in biomass stocks, and alter

plant and animal species' functioning. Fires also damage the seed bank, seedlings and saplings and this may hinder recovery of the original species. Fire typically results in some mortality of individual seeds, stems and plants (Nyamadzawo et al. 2013a). During a fire, biomass can remain as incompletely burnt organic matter (charcoal), or are re-deposited as organic matter derived ash. The practice of burning dambos, grasslands, and woodlands to prepare for ploughing or for soil fertility improvement should be strongly discouraged in order to reduce greenhouse gas emissions into the environment. Burning in agricultural land, whether from veld fires or intentional fires, is against the principle of good agricultural practice.

The N content in all the treatments were low, except the burning treatment. In their virgin state, dambos were reported to be very deficient in N (Grant 1995) and this is common in most soils of the seasonally dry ecosystem of sub Saharan Africa which are light textured and acidic (Nyamangara and Nyagumbo 2010). In cultivated dambos, N can be immobilized during decomposition of buried organic matter, and this further reduces N availability. In the cleared and clipping treatment, the N locked in the biomass was lost through biomass transfer. The low nutrient contents in dambos are consistent with previous studies (Grant 1995; Bell et al. 1987; Bell and Roberts 1991).

The concentration of nutrients was highest in the 0 -10 cm depth where there was the highest SOC. The nutrient concentrations decreased with increased depth, as did SOC. There was a good correlation between SOC and total N and this suggested that most of the N was held in SOC. Similar results showing positive correlations between SOC and total nitrogen were reported by Post and Mann (1990); Knops and Tilman (2000). Though dambos are perceived to be more fertile compared to uplands, the rapid decline in SOC following cultivation, and the low nutrient contents in dambo soils suggested that there is need to apply external sources of nutrients to sustain crop production in dambo gardens. In dambos where tillage is practiced, the use of organic manures may be a sustainable and a better placed way of maintaining soil fertility, reducing the decline in SOC (Beare et al. 1994; Sainju et al. 2006) and reducing greenhouse gas emissions.

Besides causing changes in SOC and soil nutrient contents, dambo disturbances through conventional tillage, clearing, clipping and burning also changed plant species diversity through modifying abundance or vigor of competitive species (Tilman 1988). In dambos, disturbed areas may have significantly higher diversity of successor plants as disturbance enhanced the abundance of annuals and short lived annual species compared to perennials. Disturbances, e.g., through clipping may result in reduced vegetation shoot and root growth (Matheson et al. (2002), while, Crossle and Brock (2002) reported that in some species, there was reduced biomass and reproduction. In our study clipping, conventional tillage and clearing resulted in reduced biomass production and increased species diversity. Burning increased species diversity and had the highest biomass productivity among the disturbed treatments. This was possibly because the species exploit the post disturbance conditions of reduced thatch and unpalatable tall grasses, increased nutrient contents which gave way for fresh growth full of vigor (Vasey et al. 2005, Ansley et al. 2006); though the biomass editions were lower than those from undisturbed dambos. In addition, continuous burning may also lead to the dominance of loss biomass producing, fire resistant species. Though the species diversity increased, the total biomass production was reduced in burnt plots; this may suggest that SOC and subsequent reduction in soil fertility may occur in the long-term as a result of reduced biomass additions. Beringer et al. (2007) reported net biome production of $-2.0 \text{ t carbon ha}^{-1} \text{ year}^{-1}$ in fire prone savannas of Northern Australia with similar tropical conditions to those in Zimbabwe.

Conclusions

The cultivation of dambos resulted in reduced SOC, soil nutrient contents and reduced biomass production relative to the control. Dambo disturbances resulted in reduced SOC, nutrient contents, standing biomass productivity, and a change in species diversity, thus reducing SOC sequestration potential of dambos. The magnitude of reduction of SOC, soil nutrient contents and biomass additions in the cleared treatment was comparable to the conventional tillage treatment. Clipping of grasses did not result in significant changes in

SOC and N concentrations compared to the control. However; it resulted in reduced aboveground biomass production. In dambos, burning resulted in increased SOC and nutrient availability as nutrients that are locked in the plant are released after burning. However, burning reduced biomass production, and in the long-term this may result in reduced SOC, and possible negative environmental effects, hence it should be discouraged. Dambo disturbance resulted in reduced biomass production and it resulted in a change in species composition, where annuals replaced perennials. Dambo disturbance practices reduced SOC, hence, reducing the functions of dambo as carbon sinks. Dambos continue to degrade at an alarming rate and as the cultivation of wetlands intensifies farmers are increasing the damage to the dambo ecosystem. Though the effects of dambo disturbance from, clipping, clearing, burning and conventional tillage on soil carbon pool is significant, their long-term effects on wetland carbon remains uncertain, since this study was limited to a short period (3 years), thus there is a need for long-term studies. In Zimbabwe and in the region at large, the expansion in dambo cultivation will result in reduced SOC and subsequent reduction in soil fertility. This may result in increased degradation of dambo soils. Therefore, it is recommended that sustainable management practices such as conservation agriculture, use of organic amendments, and mulch retention should be promoted as ways of maintaining soil fertility and reducing the decline in SOC in dambos.

Acknowledgments

We are grateful for the assistance given by Mr. Ngoni Jiri the AGRITEX officer, Grace Matayataya for assistance with vegetation identification and the Chiota community for the assistance during data collection. This work was supported by the International Foundation of Science (IFS) [grant C/4569-1]; DAAD Fellowship [grant number A/10/03022] and CLIFF network under the Research program on Climate change Agriculture and Food Security (CCAFS).

References

- Acres BD, Rains AB, King RB, Lawton RM, Mitchell AJB. 1985. African dambos: their distribution, characteristics and use. In: Thomas MF, Goudie AS, editors. *Dambos: small channelless valleys in the tropics*. *Z Geomorphol.* 52:63-86.
- Adeyolanu OD, Are KS, Oluwatosin GA, Ayoola OT, Adelana AO. 2013. Evaluation of two methods of soil quality assessment as influenced by slash and burn in tropical rainforest ecology of Nigeria. *Arch Agron Soil Sci*. doi: 10.1080/03650340.2012.760037.
- Anderson JM, Ingram JSI. 1993. *Tropical soil biology and fertility: A handbook of methods*. Wallingford, UK: CAB International.
- Ansley RJ, Boutton TW, Skjemstad JO. 2006. Soil organic carbon and black carbon storage and dynamics under different fire regimes in temperate mixed-grass savanna. *Global Biogeochem Cycles*. 20:GB3006. doi:10.1029/2005GB002670.
- Beare MH, Hendrix PF, Coleman DC. 1994. Water-stable aggregates and organic matter fractions in conventional and no-tillage soils. *Soil Sci Soc Am J*. 58:777-786.
- Bell M, Faulkner R, Hotchkiss P, Lambert R, Roberts N, Windram A. 1987. *The use of dambos in rural development with reference to Zimbabwe*. ODA Project R3869. Loughborough, UK: Loughborough University and Harare: University of Zimbabwe.
- Bell M, Roberts N. 1991. The Political Ecology of Dambo Soil and Water Resources in Zimbabwe. *T I Brit Geogr*. 16(3):301-318.
- Beringer J, Hutley LB, Tapper NJ, Cernusak LA. 2007. Savanna fires and their impact on net ecosystem productivity in North Australia. *Global Change Biol*. 13:990-1004.
- Boast R. 1990. Dambos - a review. *Prog Phys Geogr*. 14(2):153-177.
- Bouyoucos GJ. 1962. Hydrometer method improved for making particle size analyses of soils. *Agron J*. 53:464-465.
- Bullock A. 1992. Dambo hydrology in southern Africa and reassessment review. *J Hydrol*. 134:373-396.
- Chenje D, Sola L, Paleczny D. 1998. *The state of the Zimbabwe's Environment*. Ministry of Mines, Environment and Tourism. Harare, Zimbabwe:Government Printers.

- Chuma E, Haggmann J. 1995. Summary of results and experiences from on-station and On-farm Testing and development of Conservation Tillage Systems in Semi-Arid Masvingo, Zimbabwe. Paper presented at a technical workshop on 'soil and Water Conservation for Smallholder Farmers in Semi-arid Zimbabwe. Transfers between Research and Extension, 3-7 April. Masvingo, Zimbabwe.
- Crossle K, Brock MA. 2002. How do water regime and clipping influence wetland plant establishment from seed bank and subsequent reproduction. *Aq Bot.* 74:43-56.
- Czimczik CI, Schmidt MWI, Schulze ED. 2005. Effects of increasing fire frequency on back carbon and organic matter in Podzols of Siberian Scots pine forests. *Eur J Soil Sci.* 56:417-428.
- Dambo Research Unit. 1987. Utilisation of dambos in Rural Development. A discussion document prepared by the Dambo Loughborough, UK: Loughborough University and Harare, Zimbabwe: University of Zimbabwe Publications.
- Edmeades DC, Douglas C. 2003. The long-term effects of manures and fertilisers on soil productivity and quality: a review. *Nutr Cycl Agroecosys.* 66:165-180.
- FAO. 1998. Wetland characterization and classification for sustainable agricultural development. PART III, Use of agro-ecological zones and resource management domains for sustainable management of African wetlands. FAO of the United Nations (FAO) Sub-Regional Office for East and Southern Africa (SAFR), Harare, Zimbabwe. 2002. [Cited 2009, August 16]
- Available from: <http://www.fao.org/docrep/003/X6611E/x6611e03.html>
- FAO. 2006. World reference base for soil resources: a framework for international classification, correlation and communication. World Soil Resources Report 103, Rome, Italy: FA; pp.128
- Grant PM. 1995. Fertility of dambo soils and the related response of dambo soils to fertilizers and manure. In: Owen R, Verbeek K, Jackson J, Steenhuls T, editors. Dambo farming in Zimbabwe. Harare, Zimbabwe: University of Zimbabwe Publications; p. 117-126.

- Gu BH, Miao SL, Edelstein C, Dreschel T. 2008. Effects of a prescribed fire on dissolved inorganic carbon dynamics in a nutrient-enriched Everglades wetland. *Fundam Appl Limnol.* 171:263-272.
- Hart SC, DeLuca TH, Newman GS, MacKenzie MD, Boyle SI. 2005. Post-fire vegetative dynamics as drivers of microbial community structure and function in forest soils. *Forest Ecol Manag.* 220:166-184.
- Ivy P. 1981. A guide to soil coding and land capability classification for land use planners. Harare, Zimbabwe: Agritex.
- Knops JMH, Tilman D. 2000. Dynamics of soil nitrogen and carbon accumulation for 61 years after agricultural abandonment. *Ecology.* 81:88-98.
- Kuntashula E, Sileshi G, Mafongoya PL, Banda J. 2006. Farmer participatory evaluation of the potential for organic vegetable production in the wetlands of Zambia. *Outlook Agr.* 35(4):299-305.
- Lal R. 2007. Carbon Management in Agricultural Soils. *Mitig Adapt Strat Gl.* 12:303-322.
- Matheson FE, Nguyen FL, Cooper AB, Burt TP, Bull DC. 2002. Fate of ¹⁵N-Nitrate in unplanted, planted and harvested riparian wetland soil microsom. *Ecol Eng.* 19:249-264.
- Mazambani D. 1982. Peri-urban cultivation within Greater Harare. *Zimbabwe Science News.* 16(6):134-138.
- McCartney M, Rebelo LM, Senaratna Sellamuttu S, de Silva S. 2010. Wetlands, agriculture and poverty reduction. Colombo, Sri Lanka: International Water Management Institute (IWMI), Research Report 137; pp 39.
- McCartney MP, Masiyandima M, Houghton-Carr HA. 2005. Working wetlands, classifying wetland potential for agriculture. Research Report 90, IWMI, Colombo.
- Medvedeff CA, Inglett KS, Kobziar LN, Inglett PW. 2003. Impacts of Fire on Microbial Carbon Cycling in Subtropical Wetlands. *Fire Ecol.* 9:21-37.

- Mharapara IM, Munema MD, Mkwanda R. 1998. Wetland Characterization and Classification for Sustainable Agricultural Development. [Cited 2013, August 20]. Available from; <http://www.fao.org/DOCREP/003/X6611E/X6611E00.HTM>. ISBN. 0797419284
- Miao S, Edelstein C, Carstenn S, Gu B, 2010. Immediate ecological impacts of a prescribed fire on a cattail-dominated wetland in Florida Everglades. *Fundam Appl Limnol Arch Hydrobiol.* 176(1):29–41.
- Miller RO, Kissel DE. 2010. Comparison of soil pH methods on soils of North America. *Soil Sci Soc Am J.* 74:310-316.
- Mloza-Banda HR. 2005. Integrating new trends in farming systems approaches in Malawi. *African Crop Science Conference Proceedings, 2005, vol. 7, p. 961-966.*
- Monleon VJ, Choromack K, Landsberg JD. 1997. Short- and long-term effects of prescribed under burning on nitrogen availability in ponderosa pine stands in central Oregon. *Can J Forest Res.* 27(3):369-378.
- Nelson DW, Sommers LE. 1992. Total carbon, organic carbon and organic matter. In: Page AL, Miller RH, Keeney DR, editors. *Methods of Soil Analysis, 2nd Edition, Agronomy Monographs, vol. II.* Madison, Wisconsin, USA: ASA and SSSA; p. 539-579.
- Nyamadzawo G, Gwenzi W, Kanda A, Khundhlande A, Masona C. 2013a. Understanding the Causes, Socio-economic and Environmental Impacts, and Management of Veld Fires in Tropical Zimbabwe. *Fire Science Reviews* 2:2.
- Nyamadzawo G, Wuta M, Nyamangara J, Nyamugafata P. Forthcoming 2013b. Effect of Catena Position on Soil Organic Carbon And Nitrogen Stocks Along a Dambo Transect in Central Zimbabwe. *S Afr J Plant Soil.* Under review.
- Nyamadzawo G, Wuta M, Nyamangara J, Nyamugafata P. Forthcoming 2013c. Farmer management practices and their impacts on soil organic carbon and soil nutrient contents in cultivated dambo (vlei) gardens in Chiota smallholder farming, Zimbabwe. *Afr Crop Sci J.* Under review.

- Nyamangara J, Nyagumbo I. 2010. Interactive effects of selected nutrient resources and tied-ridging on plant performance in a semi-arid smallholder farming environment in central Zimbabwe. *Nutrient Cycling in Agroecosystems* 88(1):103-109
- Okalebo JR, Gathua KW, Woomer PL. 1993. *Laboratory Methods of Soil and Plant Analysis: Tropical Soil Biology and Fertility Programme*. Soil Science Society of East Africa Technical Publication No. 1. Nairobi: Marvel EPZ.
- Oluwole FA, Sambo JM, Sikhhalazo D. 2008. Long-term effects of different burning frequencies on the dry savannah grassland in South Africa. *AJAR*. 3(2):147-153.
- Pardini G, Gispert M, Dunjó G. 2004. Relative influence of wildfire on soil properties and erosion processes in different Mediterranean environments in NE Spain. *Sci Total Environ*. 328:237-246.
- Post WM, Mann LK. 1990. Changes in Soil Carbon and Nitrogen as a result of Cultivation. In: Bouwman AF, editor. *Soils and the greenhouse effect*. Extended abstract 19.6. New York, USA: John Wiley and Sons Ltd.
- Qian Y, Miao SL, Gu B, Li YC. 2009. Estimation of postfire nutrient loss in the Florida Everglades. *J Environ Qual*. 38:812-820.
- Rattray JM, Cormack RMM, Staples RR. 1953. The vlei areas of Southern Rhodesia and their uses. *Rhodesian Agricultural Journal*. 50:465-483.
- SADC. 2001. *Wetland Development and Management in Southern Africa Development Community (SADC) Countries*. Proceedings of a sub-regional workshop; 2001, November 19-23, Harare.
- Sainju UM, Lenssen A, Caesar-Tonthat T, Waddell JT. 2006. Tillage and crop rotation effects on dryland soil and residue carbon and nitrogen. *Soil Sci Soc Am J*. 70:668-678.
- Scholes M, Andreae MO. 2000. Biogenic and pyrogenic emissions from Africa and their impact on the global atmosphere. *AMBIO*. 29:20-23.
- Shah A. 2012. Global issues: Ecological disturbances. [Cited 2012, October 8]. Available from: <http://www.globalissues.org/issue/169/biodiversity>>

- Tilman D. 1988. Plant strategies and the dynamics and structure of plant communities.,
Princeton, New Jersey, USA: Princeton University Press.
- van Wilgen BW. 2009. The evolution of fire management practices in savanna protected
areas in South Africa. *S Afr J Sci.* 105(9–10):343-349.
- Vasey M, Schile L, Parker VT, Callaway, Taxen K. 2005. Effects of fire disturbance on two
brackish tidal wetlands in the Upper San Francisco Bay Estuary. Berkeley, CA, USA:
University of California,
- von der Heyden CJ. 2004. The hydrology and hydrogeology of dambos: A review. *Prog Phys
Geog.* 28:544-564.
- VSN international Ltd (2011) Genstat Statistical package. Wageningen, The Netherlands
- White EM, Thompson WW, Gartner FR. 1973. Heat effects on nutrient release from soils
under ponderosa pine. *J Range Manage.* 26:22-24.
- Whitlow JR. 1985. Dambos in Zimbabwe: a review. In: Thomas MF, Goudie AS, editors.
Dambos: small channelless valleys in the tropics. *Zeitschrift für Geomorphologie.*
52:115-146.
- Wood A, Dixon AB. 2009. Valuing wetlands for livelihoods as the basis for sustainable
management: The SAB approach. Striking a balance, Policy Briefing Note 1. UK.
Wetland Action and the Centre for Wetlands, Environment and Livelihoods at the
University of Huddersfield, UK.
- Zhao H, Tong DQ, Lin Q, Lu X, Wang G. 2012. Effect of fires on soil organic carbon pool
and mineralization in a Northeastern China wetland. *Geoderma.* 189-190:532–539.

Table 1. Initial SOC and soil nutrient concentrations in 2010.

Depth (cm)	0-10	10-20	20-30	30-40	SED
Initial SOC (g kg^{-1})	4.9	3.6	1.7	1.1	0.1
Total nitrogen (g kg^{-1})	3.0	2.1	1.7	1.0	0.7
Available Phosphorus ($\mu\text{g g}^{-1}$)	3.6	3.1	3.0	2.5	1.0
Exchangeable calcium ($\mu\text{g g}^{-1}$)	900	800	450	350	68.0
Exchangeable magnesium ($\mu\text{g g}^{-1}$)	340	250	225	219	11.6
Exchangeable potassium ($\mu\text{g g}^{-1}$)	90	80	44	40	7.0
C:N	13.3	11.9	11.8	11.0	

Notes: C:N = carbon to nitrogen ratio, SED = standard errors of differences of means.

Table 2. Changes in SOC after 3 years, following various disturbances in dambo garden soils.

Treatment	0-10 cm	10-20 cm	20-30 cm	30-40 cm	Average
	Initial SOC (g kg ⁻¹)				
	4.9	3.6	1.7	1.1	1.1
	SOC after 3 years (g kg ⁻¹)				
Conventional tillage	3.1	2.4	1.1	0.9	1.8
Control	4.8	3.4	1.6	1.1	2.7
Cleared	3.2	2.7	1.3	1.0	2.0
Clipping	4.0	3.1	1.3	1.0	2.4
Burning	6.1	5.6	4.0	1.0	3.8
	Change in SOC after 3 years (%)				
Conventional tillage	-37.1	-34.7	-38.2	-18.2	-32.2
Control	-3.1	-5.6	-5.9	0.0	-3.6
Cleared	-34.1	-25.6	-25.9	-13.6	-24.8
Clipping	-18.0	-13.9	-24.7	-9.1	-16.4
Burning	24.9	54.4	40.0	-9.1	27.8

Table 3. Plant species composition in plots subjected to different annual disturbance regimes for three years.

Control	Conventional tillage	Clipping	Cleared	Burning
<i>Conyza</i>	<i>Sesbania sesban</i>	<i>Cyanodon</i>	<i>Kyllinga erecta</i>	<i>Senecio</i>
<i>banariensis</i>		<i>dactylon</i>		<i>strictifolius</i>
<i>Euphorbia spp2</i>	<i>Kyllinga erecta</i>	<i>Paspalum urvillei</i>	<i>Senecio</i>	<i>Cyanodon</i>
			<i>strictifolius</i>	<i>dactylon</i>
<i>Paspalum urvillei</i>	<i>Bulbostylis</i>	<i>Kyllinga erecta</i>	<i>Bulbostylis</i>	<i>Bulbostylis</i>
	<i>buchanami</i>		<i>buchanami</i>	<i>buchanami</i>
<i>Senecio</i>	<i>Cyperus esculentus</i>	<i>Cyperus esculentus</i>	<i>Cyperus esculentus</i>	<i>Cyperus esculentus</i>
<i>strictifolius</i>				
	<i>Cyanodon</i>	<i>Conyza</i>	<i>Cyanodon</i>	<i>Paspalum urvillei</i>
	<i>dactylon</i>	<i>banariensis</i>	<i>dactylon</i>	
	<i>Paspalum urvillei</i>	<i>Richardia</i>	<i>Paspalum urvillei</i>	<i>Conyza</i>
		<i>brasiliensis</i>		<i>banariensis</i>
	Unidentified	<i>Eragrostis</i>	<i>Euphorbia spp</i>	<i>Richardia</i>
	species	<i>tennifolia</i>		<i>brasiliensis</i>
	<i>Hibiscus spp</i>	<i>Satyrium trinerve</i>	unidentified	unidentified
			species	species
			<i>Hibiscus spp</i>	
			<i>Commelina</i>	
			<i>forskaolii</i>	

Replicate 1				
Burnt	Clipping	Cleared	Control	Conventional tillage
Replicate 2				
Conventional tillage	Control	Burnt	Clipping	Cleared
Replicate 3				
Cleared	Clipping	Conventional tillage	Control	Burnt

Figure 1. Experimental design and layout of plots at the study site.

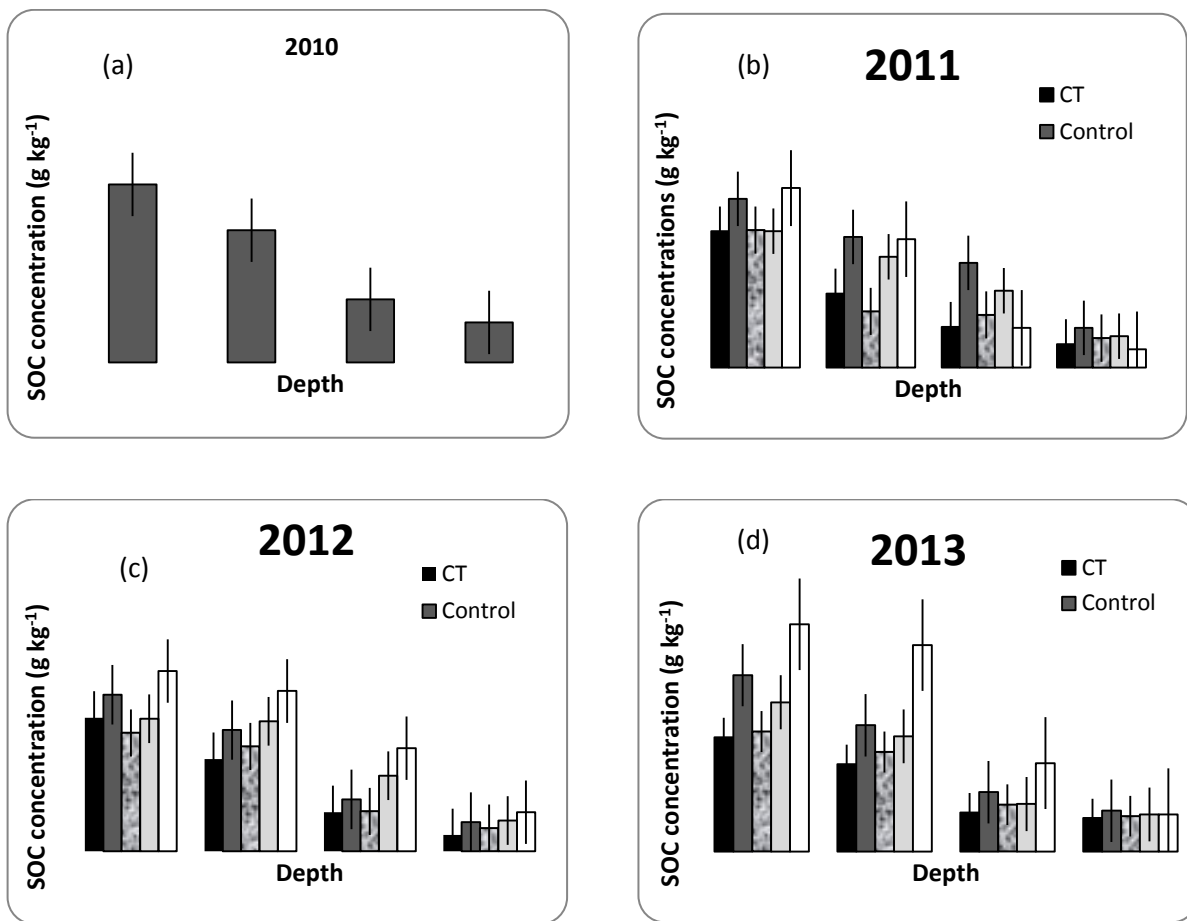


Figure 2. Changes in SOC concentration (g kg⁻¹) in dambos subjected to different disturbance regimes for (a) 2010 (b) 2011 (c) 2012 and (d) 2013. Vertical bars are standard error bars. CT= conventional tillage.

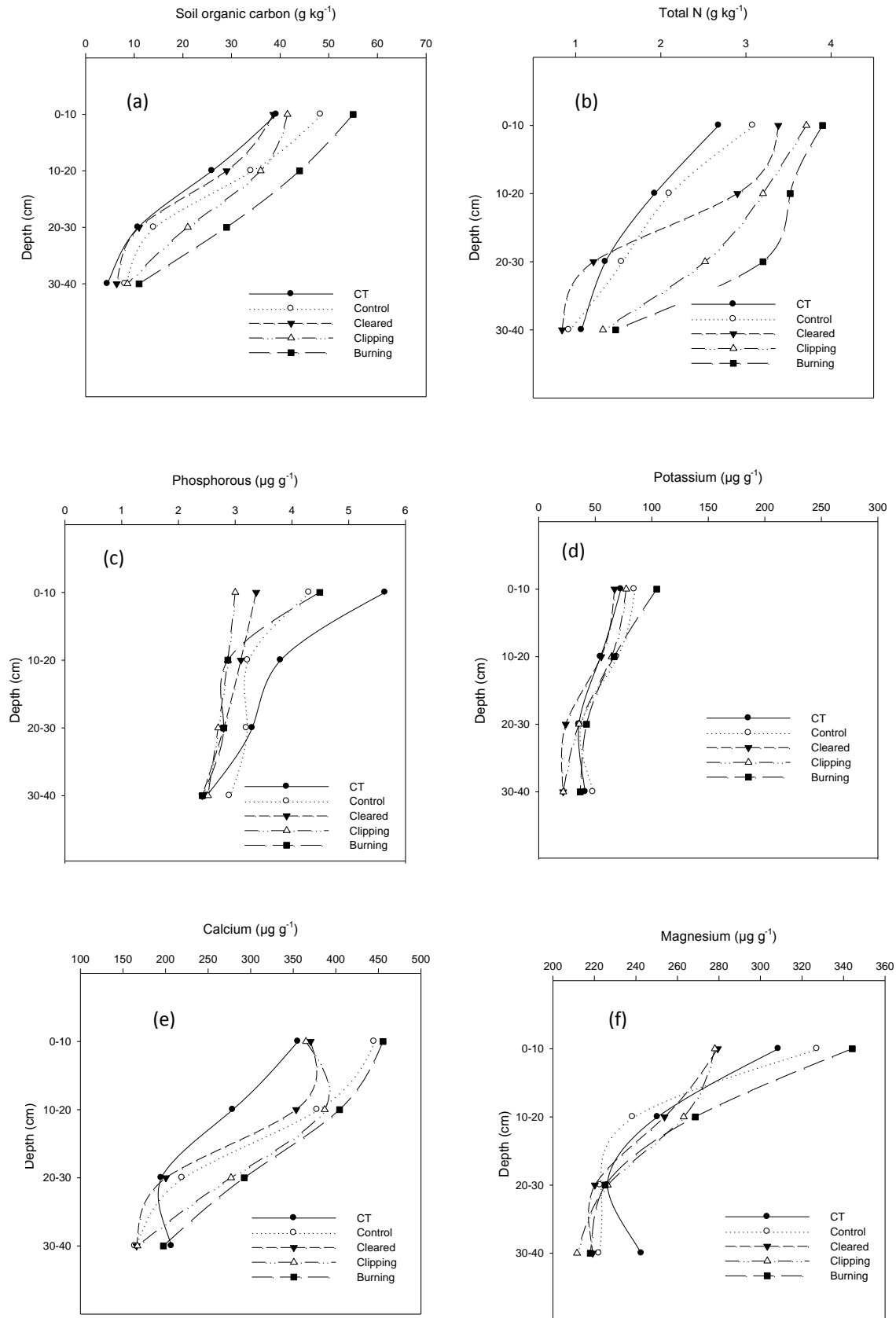


Figure 3. Concentrations of (a) SOC (b) total Nitrogen (c) available Phosphorous (d) exchangeable potassium (e) exchangeable calcium, (f) exchangeable magnesium at different depths under different management practices in 2012, 2 years after introduction of management practices. CT = conventional tillage.

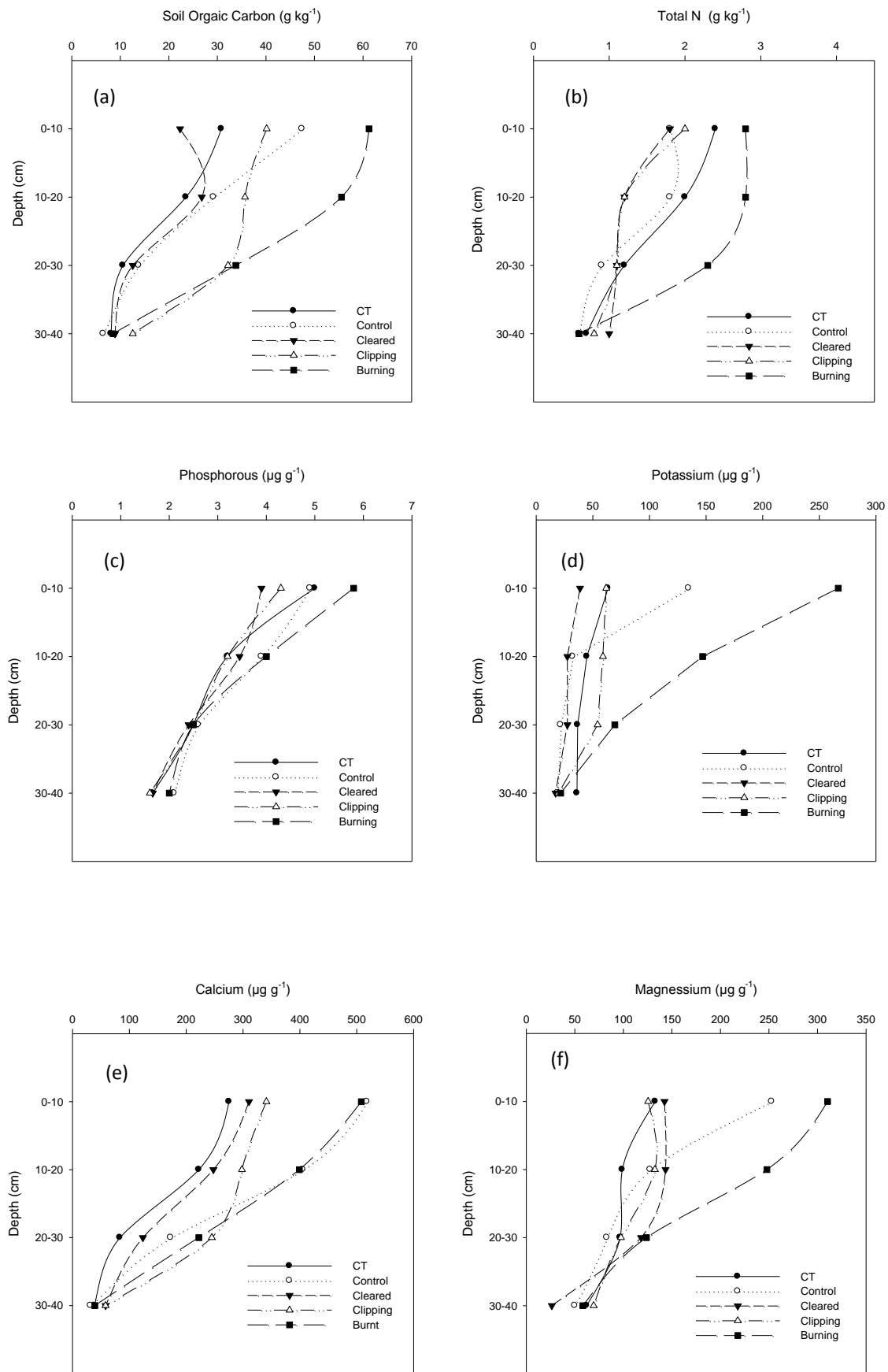


Figure 4. Concentrations of (a) SOC (b) Total Nitrogen (c) Phosphorous (d) Potassium (e) Calcium, (f) Magnesium at different depths under different management practices in 2012, 3 years after introduction of management practices. CT = conventional tillage.