



11-2018

A Typology of Transition-Age Youth

Jessica Raithel
New York City CIDI

Eileen Johns
New York City CIDI

Follow this and additional works at: https://repository.upenn.edu/admindata_conferences_presentations_2018

Raithel, Jessica and Johns, Eileen, "A Typology of Transition-Age Youth" (2018). *2018 ADRF Network Research Conference Presentations*. 6.

https://repository.upenn.edu/admindata_conferences_presentations_2018/6

DOI <https://doi.org/10.23889/ijpds.v3i5.1083>

This paper is posted at ScholarlyCommons. https://repository.upenn.edu/admindata_conferences_presentations_2018/6
For more information, please contact repository@pobox.upenn.edu.

A Typology of Transition-Age Youth

Abstract

Young adulthood is a time of transition which poses particular challenges for youth who are homeless or at risk of homelessness, including those exiting foster care. The instability of being homeless puts youth at greater risk of many poor outcomes. Connection to relevant housing resources and services are critical to ensure that young adults have the opportunity to succeed. Better aligning youths' needs with relevant housing resources can help young adults become and remain stably housed, leading to better lifetime outcomes. This study presents a typology of young adults who exit foster care and residential programs for homeless young adults, including emergency shelters and transitional living programs. The study uses administrative data to follow a cohort of 8,795 young adults, including young parents and unaccompanied young adults from ages 18 through 21, who exited foster care or homeless services. Using sequence analysis, subsequent service use after exit, including utilization of homeless services, hospitals, jail, subsidized housing, and supportive housing, was used to build three-year trajectories of service use patterns of youth. These patterns were then grouped together based on similarity using cluster analysis to form six distinct groups of youth: (1) Minimal Service Use, (2) Later Homeless Experience, (3) Earlier Homeless Experience, (4) Consistent Subsidized Housing, (5) Consistent Supportive Housing, and (6) Frequent Jail Stays. Profiles were developed for each typology to comprehensively, but concisely, describe differences in the characteristics of each group of youth. Models were also developed to determine factors that were predictive of each typology. This typology is being used to inform prioritization processes for housing resources and to better understand how to target programs based on potential pathways of youth.

Comments

DOI <https://doi.org/10.23889/ijpds.v3i5.1083>

A TYPOLOGY

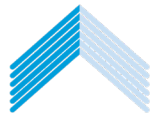
of Transition-Age Youth

November 2018



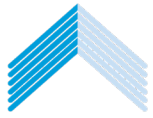
The City of New York
Mayor Bill de Blasio

NYC
Center for Innovation
through Data Intelligence



INTRODUCTION

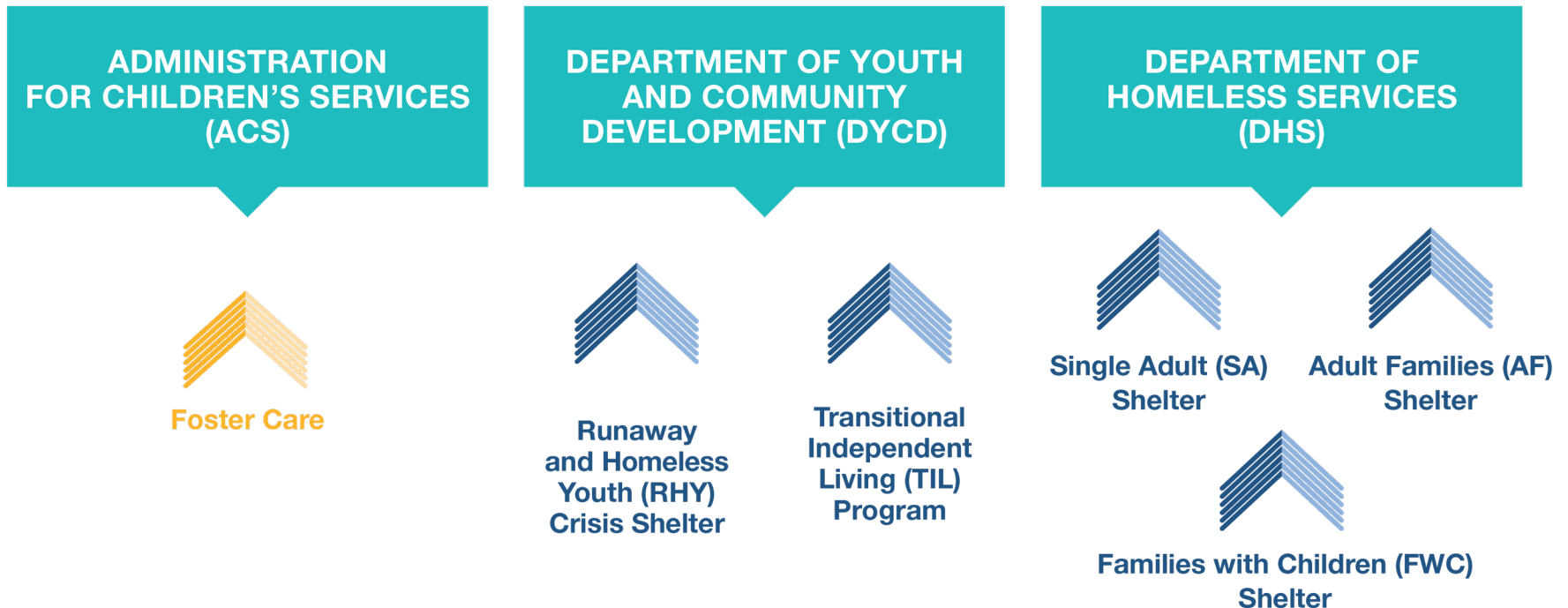
- ◆ Young adulthood is a challenging time of transition. Youth who do not have appropriate supports may be at risk of housing instability or homelessness.
- ◆ It is important to match youths' needs with available housing placements and other services and to understand gaps in services.
- ◆ A typology of youths' outcome trajectories can help understand differences in system use across different domains and be used to prioritize youth with specific risk factors for housing resources.



RESEARCH QUESTIONS

- ◆ What are the primary patterns of service use for youth once they exit homeless shelters or foster care?
- ◆ Do these patterns differ based on exit system (e.g., foster care or different types of homeless shelters)?
- ◆ What early service use and demographic factors predict these patterns?

- ◆ 18 to 21 years old when they exited from one of the systems listed below
- ◆ Exited between July 2011 and 2013
- ◆ Outcome period was three years after exit





ANALYSIS

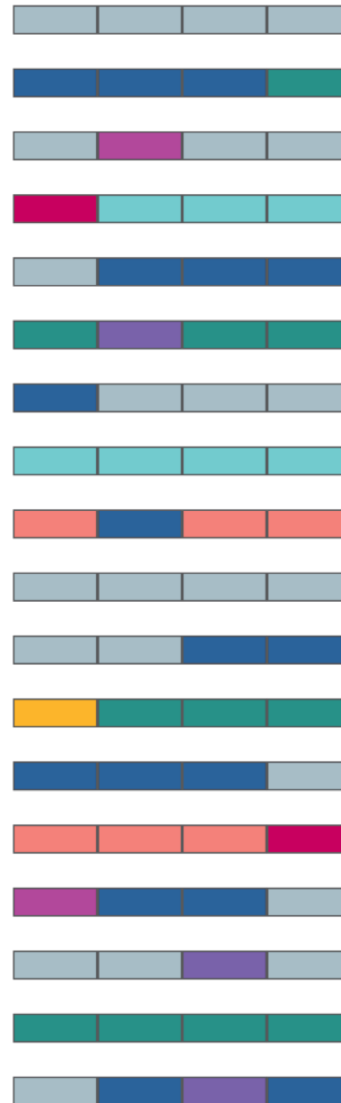


Sequence Analysis



Months of Service Use

1 2 3 4

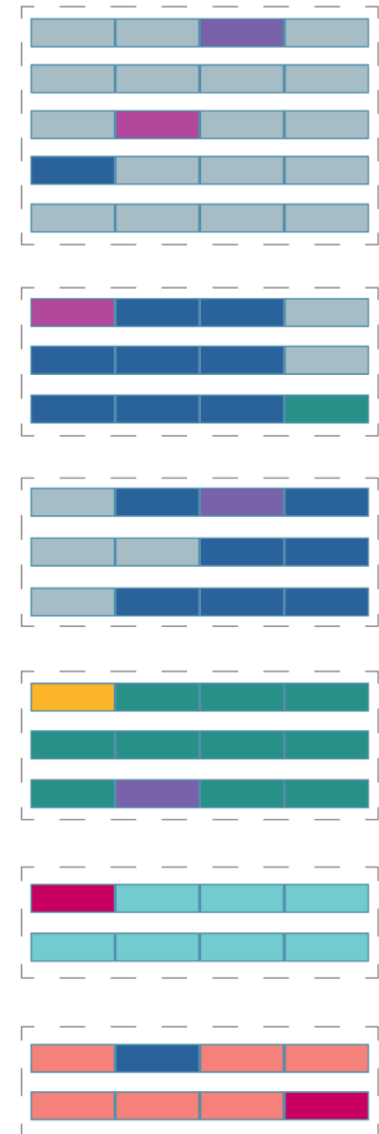


Cluster Analysis



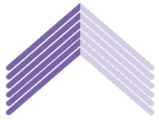
Months of Service Use

1 2 3 4

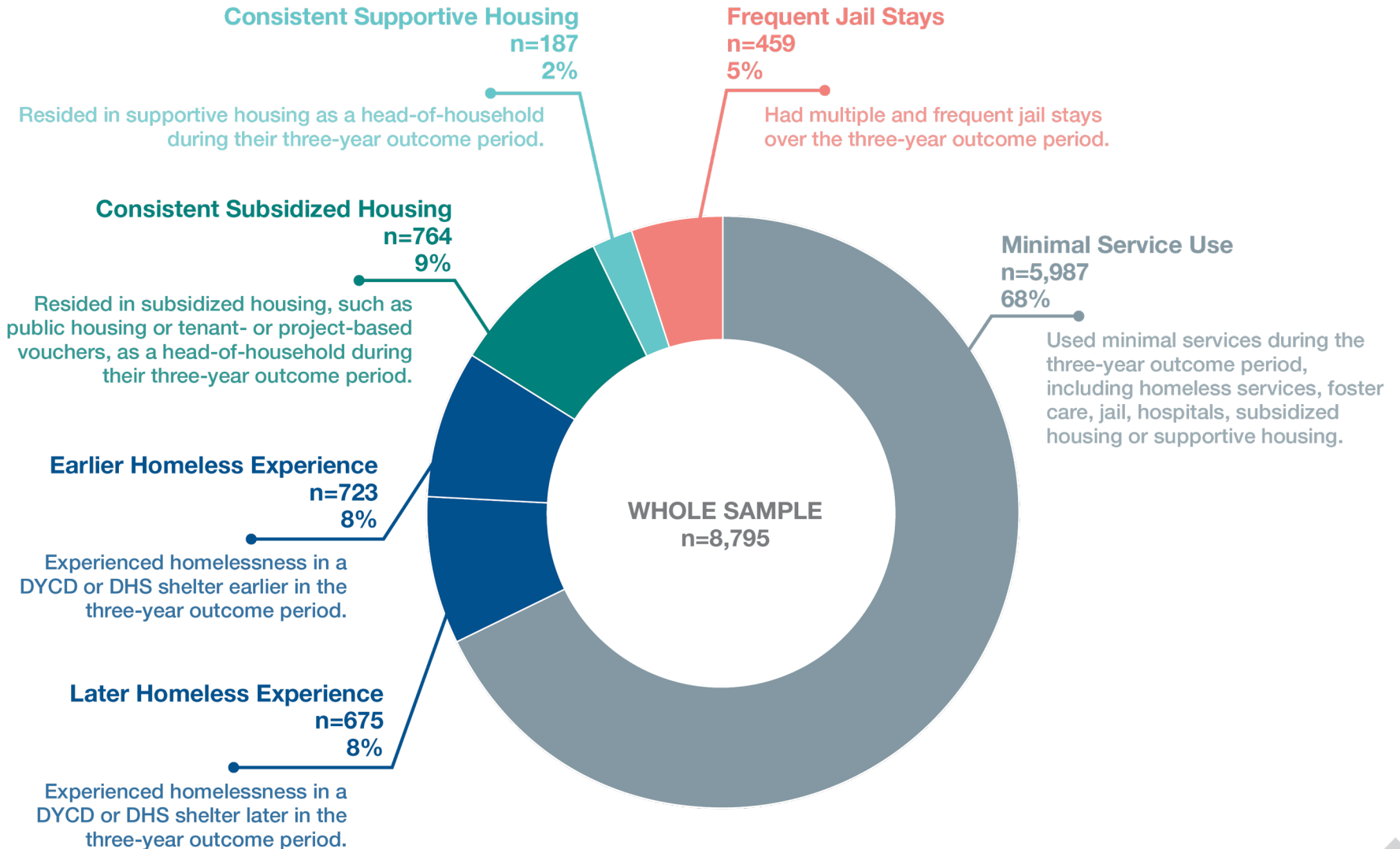


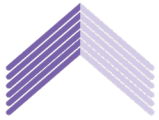
Types of Service Use

- Homeless Shelter Stays
- Jail Stays
- SMI, SUD, or PTSD Hospital Visits
- Preventable Hospital Visits
- Other Hospital Visits
- Supportive Housing
- Subsidized Housing
- Foster Care
- No System

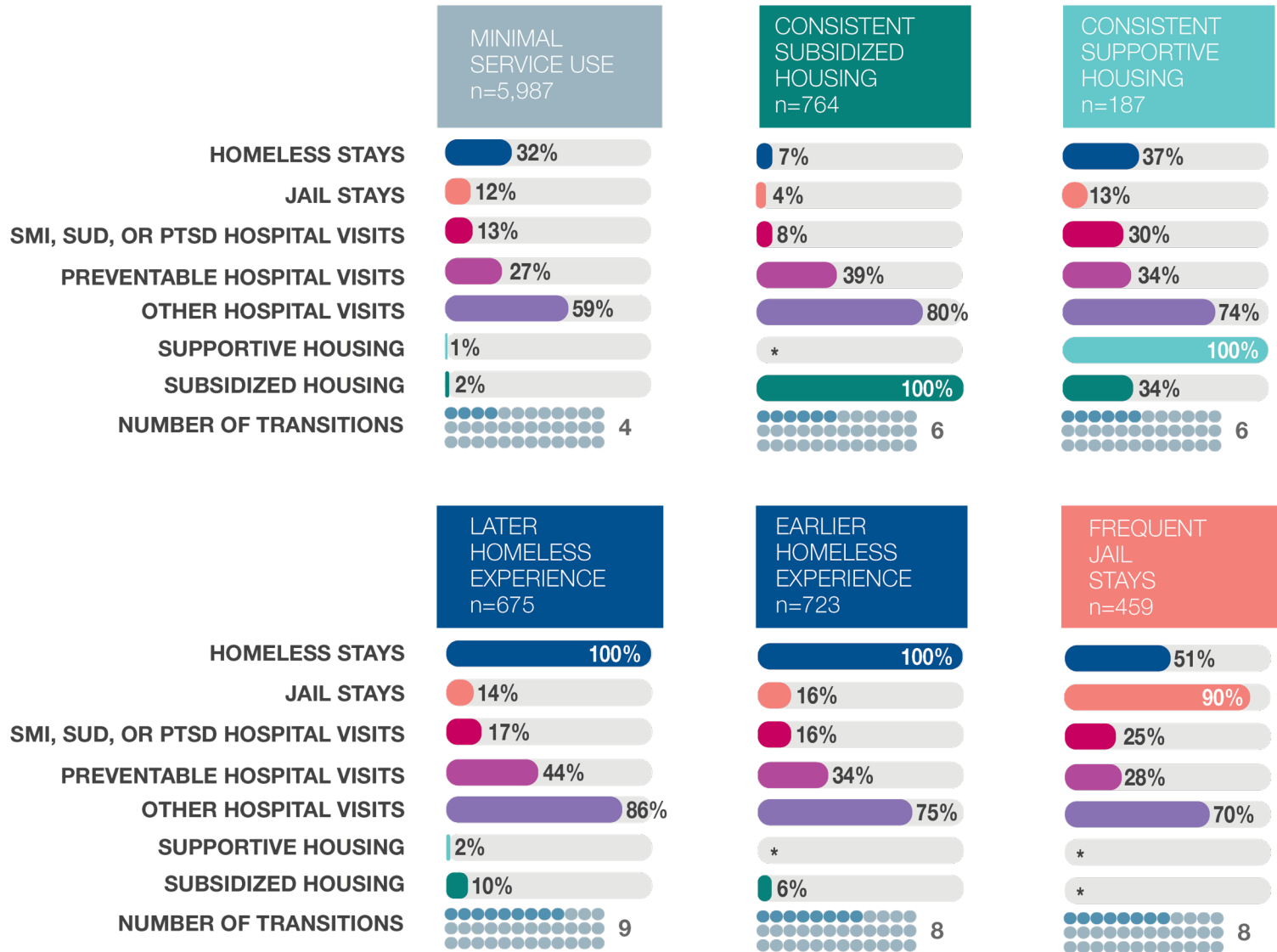


OVERVIEW OF OUTCOME GROUPS





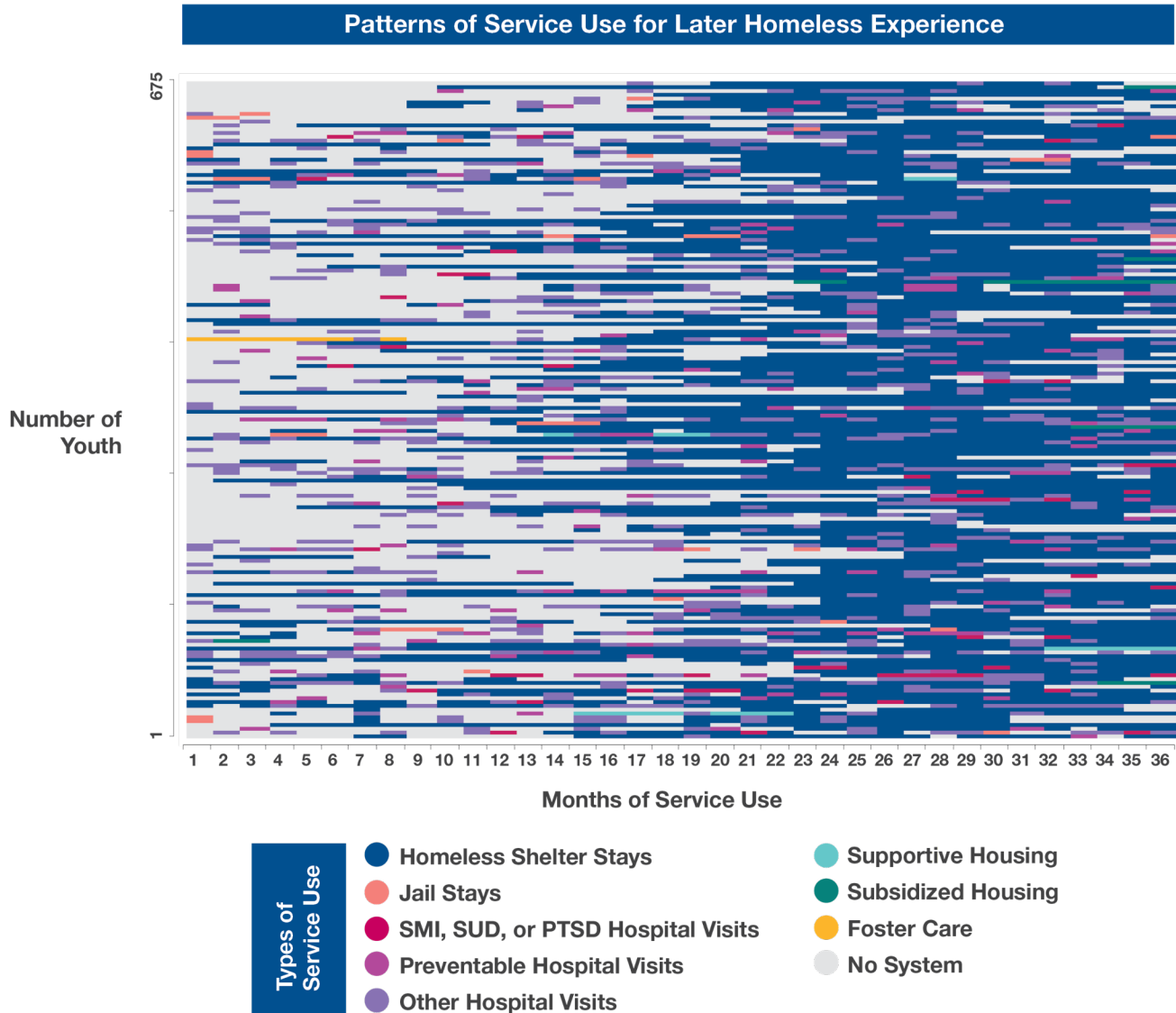
SERVICE USE IN OUTCOME PERIOD BY GROUP

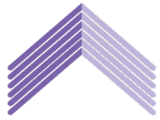


*Data not disclosed due to small cell size.

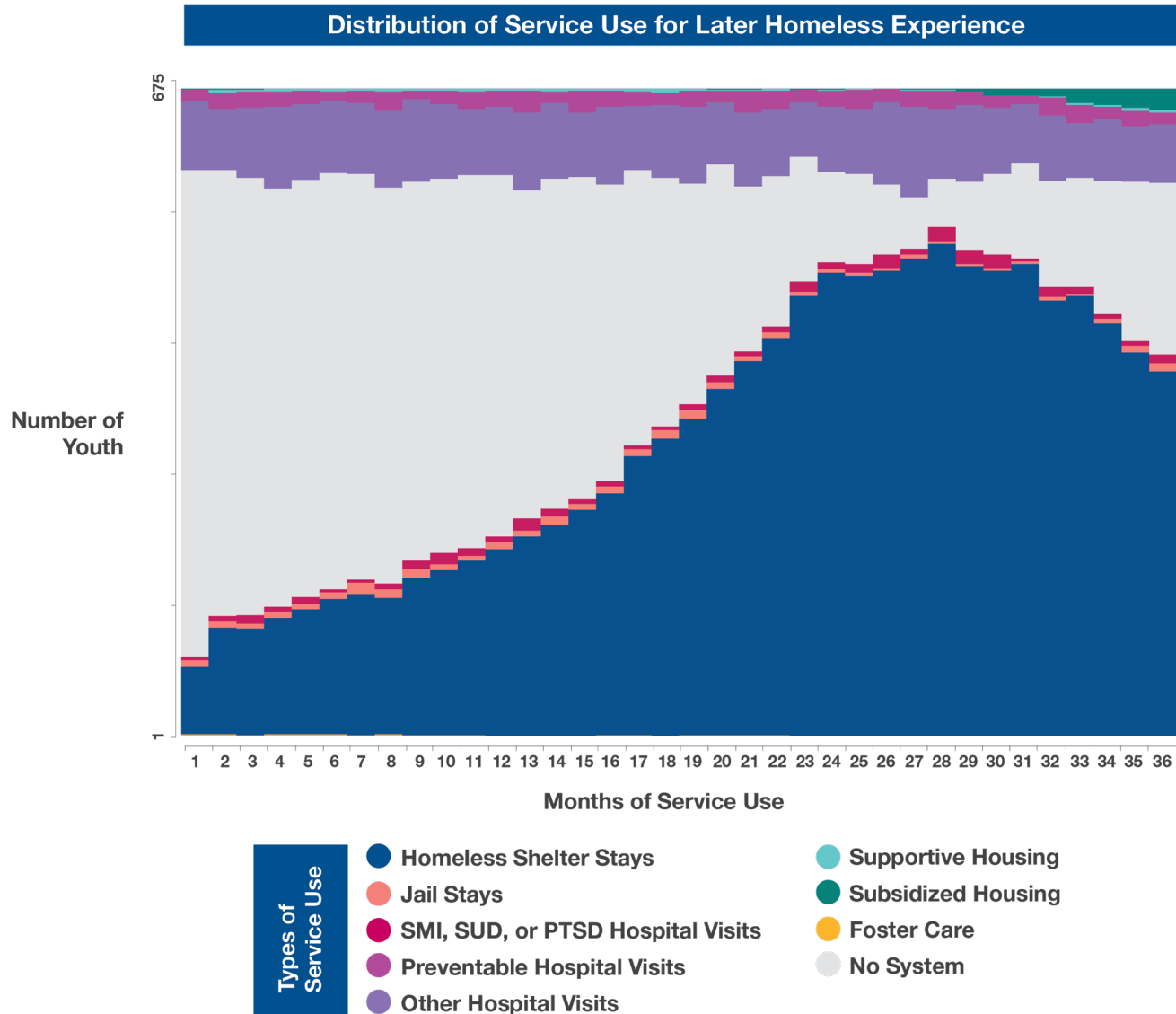


SEQUENCE PLOT EXAMPLE



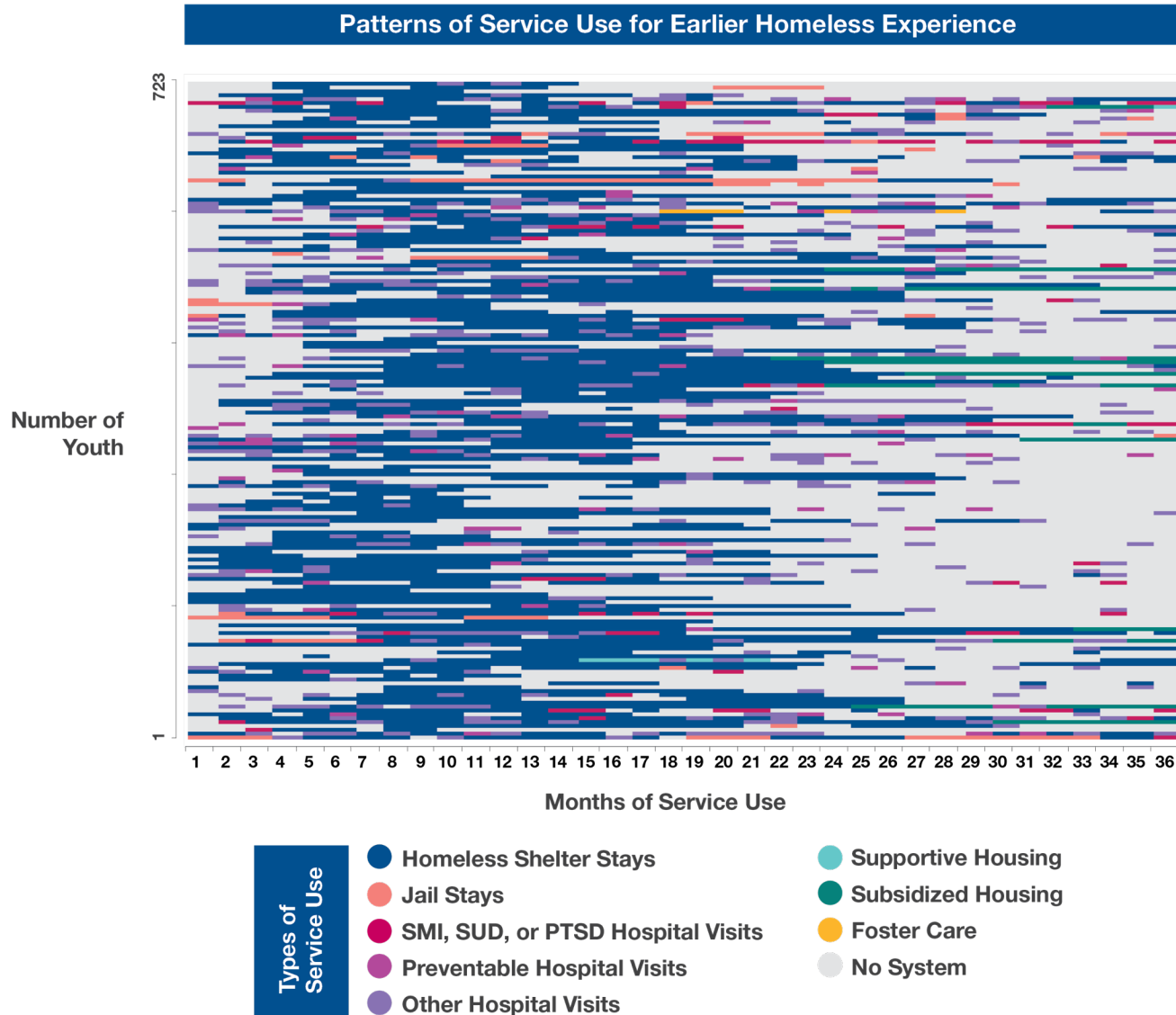


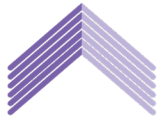
DISTRIBUTION PLOT EXAMPLE



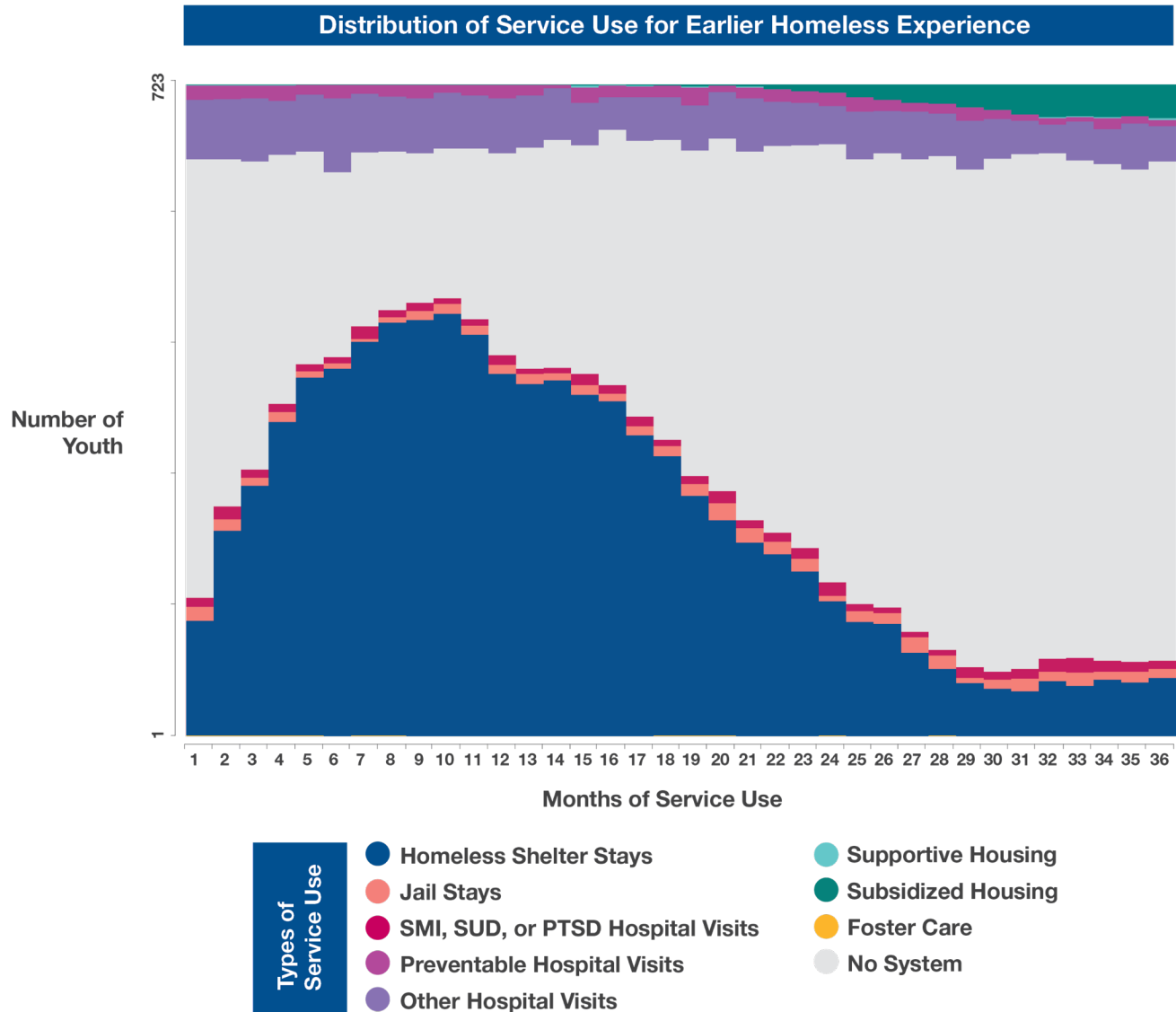


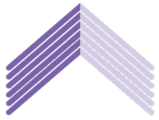
SEQUENCE PLOT EXAMPLE



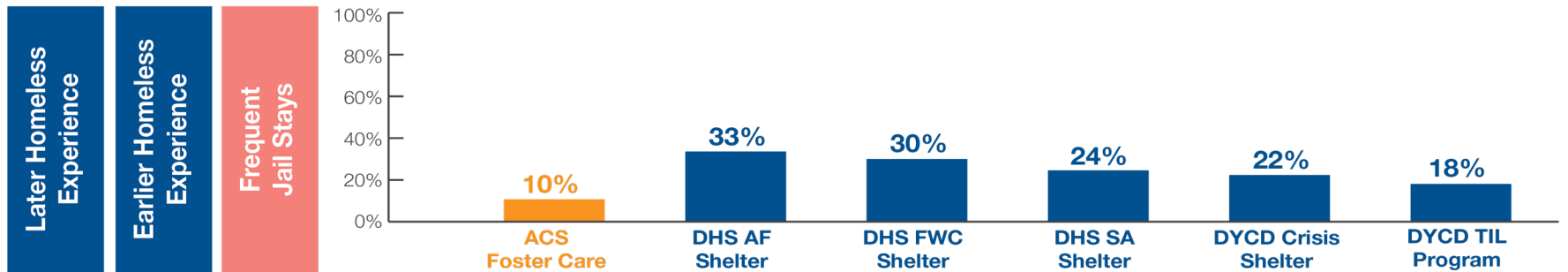
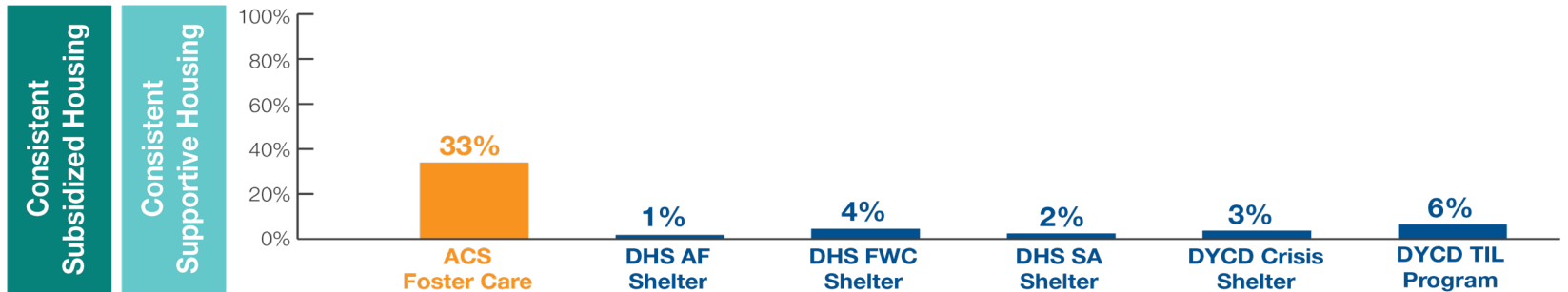
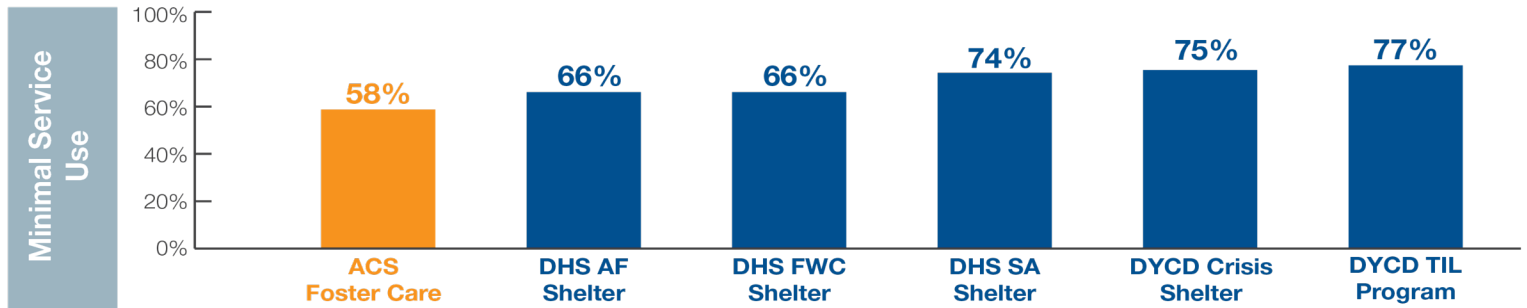


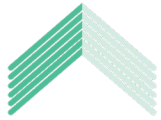
DISTRIBUTION PLOT EXAMPLE





EXIT SYSTEMS BY GROUP





SELECTED PREDICTIVE FACTORS

	Minimal Service Use	Later Homeless Experience	Earlier Homeless Experience	Consistent Subsidized Housing	Consistent Supportive Housing	Frequent Jail Stays
DEMOGRAPHICS AND EXIT SYSTEM						
Gender: Female (compared to Male)	↓	↑		↑	↓	↓
Gender: Transgender (compared to Male)	↓					↑
Race: Black/African American (compared to White)	↓				↑	↑
Exit Age (older)	↓		↓	↑	↑	↓
Exit System: DHS AF Shelter (compared to ACS Foster Care)		↑	↑	↓	↓	
Exit System: DHS FWC Shelter (compared to ACS Foster Care)	↑	↑	↑	↓	↓	
Exit System: DHS SA Shelter (compared to ACS Foster Care)	↑	↑	↑	↓	↓	↑
Exit System: DYCD RHY Crisis Shelter (compared to ACS Foster Care)	↑	↑	↑	↓		
Exit System: DYCD TIL Program (compared to ACS Foster Care)		↑	↑	↓		
PREVIOUS SYSTEM USE						
Multi-system use	↓	↑		↑		↑
Number of months in ACS Foster Care		↓	↓		↑	
Number of movements in ACS Foster Care						↑
Number of months in a homeless shelter as a child				↓		
Number of stays in a homeless shelter as an adult	↓		↑	↓		
Receiving temporary rental assistance upon exit from a DHS shelter			↓			
Number of months in the justice system			↓		↓	
Number of stays in the justice system				↓	↓	↑
Ever having a jail or detention stay for a felony	↓	↓	↓			↑
Ever having a jail or detention stay for a misdemeanor	↓	↓				↑
Having a hospital visit for SMI/SUD/PTSD			↓	↓	↑	↑

↑ = increases the probability of being in a group

↓ = decreases the probability of being in a group



LIMITATIONS

- ◆ Although sequence analysis allows for more nuanced service use profiles, every youth's service use experience is not described perfectly by the six groups.
- ◆ The study relies on administrative data, so it was unable to include other factors that may be important, such as the resiliency, strengths, and resources of the youth.
- ◆ A mixed-methods approach would help incorporate personal narratives from youth with lived experience.



IMPLICATIONS

- ◆ Services can be better matched to youth's needs based on information from the service use profiles of each group.
- ◆ Services and resources can be better targeted to youth who need them based on information from the predictive factors.
- ◆ High rates of hospital use across all groups may indicate a need for better engagement and access to primary care.
- ◆ A coordinated entry system should ensure youth can access all resources regardless of which system they enter through.



**Contact:
Eileen Johns
ejohns@cidi.nyc.gov**

**Report can be accessed at:
www.nyc.gov/cidi**