

2013

## Core Measures

Nikki Laudenbach

*CentraCare Health*, laudenbachn@centracare.com

Kristi Patterson

*CentraCare Health*, pattersonk@centracare.com

Carol Upcraft

*CentraCare Health*, upcraftc@centracare.com

Follow this and additional works at: [https://digitalcommons.centracare.com/nursing\\_posters](https://digitalcommons.centracare.com/nursing_posters)



Part of the [Other Nursing Commons](#)

---

### Recommended Citation

Laudenbach, Nikki; Patterson, Kristi; and Upcraft, Carol, "Core Measures" (2013). *Nursing Posters*. 12.

[https://digitalcommons.centracare.com/nursing\\_posters/12](https://digitalcommons.centracare.com/nursing_posters/12)

This Book is brought to you for free and open access by the Posters and Scholarly Works at DigitalCommons@CentraCare Health. It has been accepted for inclusion in Nursing Posters by an authorized administrator of DigitalCommons@CentraCare Health. For more information, please contact [schlepers@centracare.com](mailto:schlepers@centracare.com).

# Core Measures



Clinical Utilization:

Nikki Laudenschach, RN, BSN

Kristi Patterson, RN, BSN

Carol Upcraft, MBA, RN, BSN, PHN

## What are Core Measures?

- Hospital quality measures that are monitored and reported to the Joint Commission and the Centers for Medicare & Medicaid Services (CMS)
- Evidence-based practices and scientifically researched standards of care which result in improved clinical outcomes for patients
- Impact Value Based Purchasing reimbursement



## How Do Core Measures Help?

- Assist us to provide optimal care across all patient populations
- Help us to identify areas where we can improve patient outcomes
- Provide a focus for the development of clinical pathways and standard order sets

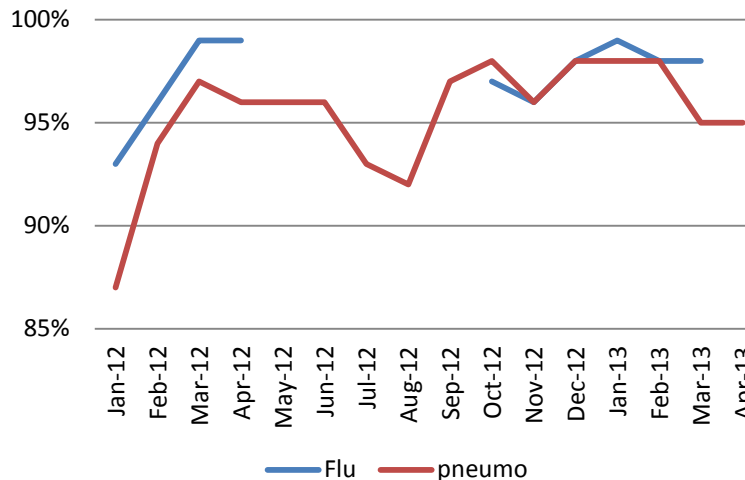
## Reported Core Measures

- Acute Myocardial Infarction (AMI)
- Heart Failure (HF)
- Pneumonia (PN)
- Surgical Care Improvement Project (SCIP)
- Global Immunizations (IMM)
- Emergency Department
- Stroke
- Venous Thromboembolism Prophylaxis (VTE)
- Children's Asthma Care (CAC)

## One Example of our Progress:

### Influenza & Pneumococcal Vaccination Success Rate

Goal=100%



*\*This graph represents compliance with the global immunization core measure.*



## How Can I Help?

### RN

- Identify Core Measure patients, coordinate care through the multidisciplinary team
- Remind providers to use order sets and protocols to help meet specific measures
- Understand the details of Core Measures
- Provide daily and discharge education to enhance patient success in managing their illness and care

### HUC

- Assist in running daily Epic reports
- Send reminders to the RN under "Care Team Communication"

### Case Manager

- Evaluate process changes required, propose order and practice changes
- Serve as a resource to staff and providers

## Core Measures Pocket Guide

- While many measures depend on documentation by the provider, they can also be impacted by nursing care
- Other resources include annual CBT for Core Measures, Charge Nurse, CM

## References

Centers for Medicare & Medicaid Services (n.d.). *Recommended Core Measures*. Retrieved from [http://www.cms.gov/Regulations-and-Guidance/Legislation/EHRIncentivePrograms/Recommended\\_Core\\_Set.html](http://www.cms.gov/Regulations-and-Guidance/Legislation/EHRIncentivePrograms/Recommended_Core_Set.html)

The Joint Commission. (2013). *Core Measure Sets*. Retrieved from [http://www.jointcommission.org/core\\_measure\\_sets.aspx](http://www.jointcommission.org/core_measure_sets.aspx)