

Manuscript version: Author's Accepted Manuscript

The version presented in WRAP is the author's accepted manuscript and may differ from the published version or Version of Record.

Persistent WRAP URL:

<http://wrap.warwick.ac.uk/119284>

How to cite:

Please refer to published version for the most recent bibliographic citation information. If a published version is known of, the repository item page linked to above, will contain details on accessing it.

Copyright and reuse:

The Warwick Research Archive Portal (WRAP) makes this work by researchers of the University of Warwick available open access under the following conditions.

Copyright © and all moral rights to the version of the paper presented here belong to the individual author(s) and/or other copyright owners. To the extent reasonable and practicable the material made available in WRAP has been checked for eligibility before being made available.

Copies of full items can be used for personal research or study, educational, or not-for-profit purposes without prior permission or charge. Provided that the authors, title and full bibliographic details are credited, a hyperlink and/or URL is given for the original metadata page and the content is not changed in any way.

Publisher's statement:

Please refer to the repository item page, publisher's statement section, for further information.

For more information, please contact the WRAP Team at: wrap@warwick.ac.uk.

Nonlinear Sound Propagation in 2D curved ducts: A Multimodal Approach

James P. McTavish¹ and Edward J. Brambley^{2†}

¹Department of Applied Mathematics and Theoretical Physics, University of Cambridge, Centre for Mathematical Sciences, Wilberforce Road, Cambridge CB3 0WA, UK

²Mathematics Institute and WMG, University of Warwick, Coventry CV4 7AL, UK

(Received 17 April 2019)

A method for studying weakly nonlinear acoustic propagation in 2D ducts of general shape—including curvature and variable width—is presented. The method is based on a local modal decomposition of the pressure and velocity in the duct. A pair of nonlinear ODEs for the modal amplitudes of the pressure and velocity modes is derived. To overcome the inherent instability of these equations, a nonlinear admittance relation between the pressure and velocity modes is presented, introducing a novel ‘nonlinear admittance’ term. Appropriate equations for the admittance are derived which are to be solved through the duct, with a radiation condition applied at the duct exit. The pressure and velocity are subsequently found by integrating an equation involving the admittance through the duct. The method is compared, both analytically and numerically, against published results and the importance of nonlinearity is demonstrated in ducts of complex geometry. Comparisons between ducts of differing geometry are also performed to illustrate the effect of geometry on nonlinear sound propagation. A new ‘nonlinear reflectance’ term is introduced, providing a more complete description of acoustic reflection that also takes into account the amplitude of the incident wave.

Key words: Nonlinear acoustics, waveguides, modal decomposition

1. Introduction

Acoustic ducts of different shapes and sizes are ubiquitous in engineering applications as well as everyday life. From the curves and flare in a trombone (Hirschberg *et al.* 1996; Rendón *et al.* 2010), or the call of an elephant propagating down its trunk (Gilbert *et al.* 2014), to the design of automotive exhaust pipes and the curved air intakes on military aircraft (Brambley & Peake 2008), many ducts feature both a complex geometry and pressure waves of sufficient amplitude that nonlinearity should not be ignored. Until now, most work has dealt with either the geometrical problem of curved duct acoustics in a linear regime or nonlinear acoustics in simple geometries. In this paper we shall address the combination of the two problems.

There are a number of works dealing with curved waveguides (see Rostafiński (1991) for a fairly comprehensive review of early work). Current methods generally fall into one of three categories: perturbation methods (e.g. Ting & Miksis 1983) which limit the applicability of the solution to, for example, slender ducts; direct computation (e.g. Cabelli 1980) limiting the physical insight; and methods based on the separation of

† Email address for correspondence: E.J.Brambley@warwick.ac.uk

variables. One such method, the multimodal method (MMM)—first proposed by Pagneux *et al.* (1996) for the study of ducts of varying cross section and subsequently generalised to 2D curved ducts (Félix & Pagneux 2001), 3D curved ducts (Félix & Pagneux 2002) and lined ducts (Bi *et al.* 2006)—decomposes the pressure and velocity into a basis of straight duct modes, relates these modes via an impedance matrix, and numerically solves the resulting equations throughout the duct, allowing for greater insight without the cost of restrictive approximations. This method shall form the basis of the present work, where we extend it to a weakly nonlinear regime. Similarly, ducts of varying width also have received much attention (see Campos (1984) for a review). Again, methods based on modal decomposition by Pagneux *et al.* (1996) shall influence our work.

The study of nonlinear acoustics in waveguides has hitherto largely focussed on the study of straight, uniform ducts or simplified wave approximations. Following the work of Hirschberg *et al.* (1996), who demonstrated that nonlinear effects give rise to wave steepening and shock formation in trombones, there has been much work on the modelling of acoustics in brass instruments (for example Gilbert *et al.* 2008; Rendón *et al.* 2010; Thompson & Strong 2001). Current literature in this area is typically restricted to 1D plane wave propagation, despite the fact that the plane wave approximation is a very poor approximation to the wave profile in a horn (Pagneux *et al.* 1996). Other work dealing with nonplanar wave propagation includes Fernando *et al.* (2011), who use a multimodal method to calculate nonplanar wave propagation in a straight duct. While this method has much in common with ours, it is not readily amenable to curved ducts due to the absence of a way of dealing with reflected waves.

The paper is set out in the following way. In section 2, we present an exposition of our method and derive its governing equations. This includes the introduction of our novel ‘nonlinear admittance’ term and the associated algebra governing it. In section 3 we derive the nonlinear boundary conditions for an infinite uniform outlet duct, including those which may be curved, and address the stability of such solutions. Our numerical method is presented in section 4, and in section 5 we show our numerical results, again, comparing with those previously published to illustrate the importance of taking nonlinear effects into account. In section 6 we investigate nonlinear propagation in ducts of identical length but differing geometry to show the effect different geometries have on the acoustic wave. In section 7 we introduce a new ‘nonlinear reflectance’ which takes into account the amplitude of the signal and use this to demonstrate how the reflectance of a duct changes with amplitude in previously published work.

2. Governing Equations

Following the work of many classic texts (see for example Hamilton *et al.* (1998) chapter 3) we begin with the inviscid mass and momentum conservation equations

$$\frac{\partial \rho}{\partial t} + \nabla \cdot (\rho \mathbf{u}) = 0, \quad (2.1a)$$

$$\rho \left(\frac{\partial \mathbf{u}}{\partial t} + \mathbf{u} \cdot \nabla \mathbf{u} \right) = -\nabla p. \quad (2.1b)$$

and introduce non dimensional variables of the form

$$p = \rho_0 c_0^2 \hat{p}, \quad \rho = \rho_0 \hat{\rho}, \quad \mathbf{u} = c_0 \hat{\mathbf{u}}, \quad (2.2a,b,c)$$

where ρ_0 and c_0 are the reference density and speed of sound for the stationary fluid respectively. Perturbations about a state of rest are then considered

$$\hat{p} = \hat{p}_0 + \hat{p}', \quad \hat{\rho} = \hat{\rho}_0 + \hat{\rho}', \quad \hat{\mathbf{u}} = \hat{\mathbf{u}}', \quad (2.3a,b,c)$$

with $\hat{p}' \sim \hat{\rho}' \sim \hat{\mathbf{u}}' \sim M$ where $M < 1$ is the perturbation Mach number, which is assumed to be small but finite. This approximation holds true in many situations. The conversion from Mach number to RMS sound pressure level (SPL) in decibels for a sinusoidal pressure source in air at 20°C is approximately

$$\text{SPL} \sim (194 + 20 \log_{10} M) \text{ dB} \quad (2.4)$$

For pressure sources such as that of the mouthpiece of the trombone when played fortissimo, SPLs can typically be around 170 dB corresponding to a Mach number of up to around 0.1. As such, the small but finite Mach number approximation is a very realistic one.

Discarding terms of $O(M^3)$ and higher in equations (2.1a) and (2.1b) gives

$$\frac{1}{c_0} \frac{\partial \hat{\rho}'}{\partial t} + \nabla \cdot \hat{\mathbf{u}}' = -\hat{\mathbf{u}}' \cdot \nabla \hat{\rho}' - \hat{\rho}' \nabla \cdot \hat{\mathbf{u}}', \quad (2.5a)$$

$$\frac{1}{c_0} \frac{\partial \hat{\mathbf{u}}'}{\partial t} + \nabla \hat{p}' = -\hat{\mathbf{u}}' \cdot \nabla \hat{\mathbf{u}}' + \hat{\rho}' \nabla \hat{p}' \quad (2.5b)$$

where the linear expression for $\frac{\partial \hat{\mathbf{u}}'}{\partial t} = -c_0 \nabla \hat{p}'$ has been used in the quadratic term on the RHS of the momentum equation. In much of what will follow we will perform similar manipulations, substituting $O(M)$ expressions for acoustical quantities into $O(M^2)$ terms, noting that the error in doing so is $O(M^3)$ which we are neglecting.

We now consider the entropy equation

$$\frac{DS}{Dt} = 0, \quad (2.6)$$

which holds everywhere, since our weakly nonlinear assumptions means any shocks are weak shocks. We shall take our fluid to have initially uniform entropy S_0 . By (2.6) our fluid will retain this value at all times. As a result, we may Taylor expand the equation of state $p = p(S, \rho)$ at fixed entropy about $\rho = \rho_0$, $S = S_0$, to get

$$p' = A \left(\frac{\rho'}{\rho_0} \right) + \frac{B}{2!} \left(\frac{\rho'}{\rho_0} \right)^2 + \dots = c_0^2 \rho' + \frac{B}{2A} \frac{c_0^2}{\rho_0} \rho'^2 + \dots \quad (2.7)$$

where

$$A = \rho_0 \left(\frac{\partial p}{\partial \rho} \right)_{S,0} = \rho_0 c_0^2, \quad \text{and} \quad B = \rho_0^2 \left(\frac{\partial^2 p}{\partial \rho^2} \right)_{S,0} \quad (2.8)$$

For a perfect gas $B/A = \gamma - 1$ where γ is the ratio of specific heats. In non-dimensional variables

$$\hat{p}' = \hat{\rho}' + \frac{B}{2A} \hat{\rho}'^2 \quad (2.9)$$

Inverting this equation (correct to second order) gives

$$\hat{\rho}' = \hat{p}' - \frac{B}{2A} \hat{p}'^2 \quad (2.10)$$

which can be used to eliminate density from the mass and momentum equations. This

gives

$$\frac{1}{c_0} \frac{\partial \hat{p}'}{\partial t} + \nabla \cdot \hat{\mathbf{u}}' = -\hat{p} \nabla \cdot \hat{\mathbf{u}}' - \hat{\mathbf{u}}' \cdot \nabla \hat{p} + \frac{1}{c_0} \frac{B}{2A} \frac{\partial}{\partial t} (\hat{p}'^2), \quad (2.11a)$$

$$\frac{1}{c_0} \frac{\partial \hat{\mathbf{u}}'}{\partial t} + \nabla \hat{p}' = -\hat{\mathbf{u}}' \cdot \nabla \hat{\mathbf{u}}' + \hat{p}' \nabla \hat{p}'. \quad (2.11b)$$

The pressure and velocity can now be expressed as Fourier series. Upper indices shall be used to denote temporal decompositions in multiples of some real base frequency ω ,

$$\hat{p} = \sum_{a=-\infty}^{\infty} P^a(\mathbf{x}) e^{-ia\omega t}, \quad \hat{\mathbf{u}} = \sum_{a=-\infty}^{\infty} \mathbf{U}^a(\mathbf{x}) e^{-ia\omega t} \quad (2.12a,b)$$

where $P^{-a} = P^{a*}$ and $\mathbf{U}^{-a} = \mathbf{U}^{a*}$ (with $*$ denoting the complex conjugate) so that both \hat{p} and $\hat{\mathbf{u}}$ are real (and can be substituted into quadratic terms without worry). Both P^0 and \mathbf{U}^0 are taken to be identically zero (see appendix A).

Equations (2.11a) and (2.11b) then become

$$\sum_{a=-\infty}^{\infty} (-iakP^a + \nabla \cdot \mathbf{U}^a) e^{-ia\omega t} = \sum_{b,c=-\infty}^{\infty} \left(-P^b \nabla \cdot \mathbf{U}^c - \mathbf{U}^b \cdot \nabla P^c - \frac{B}{2A} i(b+c)kP^b P^c \right) e^{-i(b+c)\omega t}, \quad (2.13a)$$

$$\sum_{a=-\infty}^{\infty} (-iak\mathbf{U}^a + \nabla P^a) e^{-ia\omega t} = \sum_{b,c=-\infty}^{\infty} \left(-\mathbf{U}^b \cdot \nabla \mathbf{U}^c + P^b \nabla P^c \right) e^{-i(b+c)\omega t}. \quad (2.13b)$$

where $k = \frac{\omega}{c_0}$ is the base wavenumber. Equating terms of the Fourier series yields

$$-iakP^a + \nabla \cdot \mathbf{U}^a = \sum_{b=-\infty}^{\infty} \left(-P^{a-b} \nabla \cdot \mathbf{U}^b - \mathbf{U}^{a-b} \cdot \nabla P^b - \frac{B}{2A} iakP^b P^{a-b} \right), \quad (2.14a)$$

$$-iak\mathbf{U}^a + \nabla P^a = \sum_{b=-\infty}^{\infty} \left(-\mathbf{U}^{a-b} \cdot \nabla \mathbf{U}^b + P^{a-b} \nabla P^b \right). \quad (2.14b)$$

These are the general form of the equations we wish to solve. The ensuing steps depend on the number of dimensions of the problem—the following work is for a 2D duct although the procedure is readily generalizable to three dimensions using the appropriate coordinate system.

2.1. Duct Geometry

Figure 1 illustrates the geometry of our duct. We define our duct by its centreline $\mathbf{q}(s)$ in terms of the longitudinal arc length s from the pressure source inlet. The general position vector in the duct is given by

$$\mathbf{x}(s, r) = \mathbf{q}(s) + r\hat{\mathbf{n}} \quad (2.15)$$

where $h_-(s) \leq r \leq h_+(s)$ (with $h_-(s) < 0$) defines the transverse position inside the duct of width $h = (h_+ - h_-)$ and $\hat{\mathbf{n}} = \hat{\mathbf{n}}(s)$ is the unit normal to the duct defined by the Frenet-Serret formulas:

$$\frac{d\mathbf{q}}{ds} = \hat{\mathbf{t}}, \quad \frac{d\hat{\mathbf{t}}}{ds} = \kappa(s)\hat{\mathbf{n}}, \quad \frac{d\hat{\mathbf{n}}}{ds} = -\kappa(s)\hat{\mathbf{t}}. \quad (2.16a,b,c)$$

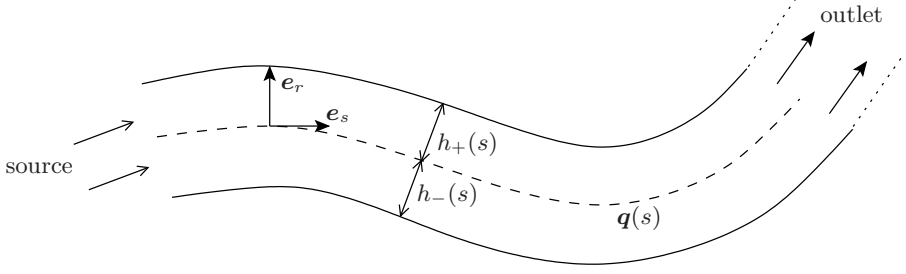


FIGURE 1. Illustration of the geometry of the duct

with $\kappa(s)$ being the local curvature of the centreline and $\hat{\mathbf{t}} = \hat{\mathbf{t}}(s)$ the unit tangent vector to the centreline. The basis vectors and their corresponding Lamé coefficients are

$$\mathbf{e}_s = \hat{\mathbf{t}}, \quad h_s = 1 - \kappa r, \quad \mathbf{e}_r = \hat{\mathbf{n}}, \quad h_r = 1. \quad (2.17)$$

Using these, equations (2.14a) and (2.14b) can now be expanded in their coordinate specific forms resulting in three coupled equations for the Fourier modes of pressure P^a , longitudinal velocity U^a and transverse velocity V^a

$$\begin{aligned} -iakP^a + \frac{1}{1-\kappa r} \frac{\partial U^a}{\partial s} + \frac{\partial V^a}{\partial r} - \frac{\kappa V^a}{1-\kappa r} \\ = \sum_{b=-\infty}^{\infty} \left(-ibkP^{a-b}P^b - ibkU^{a-b}U^b - ibkV^{a-b}V^b - \frac{B}{2A}iakP^bP^{a-b} \right), \end{aligned} \quad (2.18a)$$

$$\begin{aligned} -iakU^a + \frac{1}{1-\kappa r} \frac{\partial P^a}{\partial s} \\ = \sum_{b=-\infty}^{\infty} \left(-\frac{U^{a-b}}{1-\kappa r} \frac{\partial U^b}{\partial s} - V^{a-b} \frac{\partial U^b}{\partial r} + \frac{\kappa}{1-\kappa r} U^{a-b}V^b + ibkP^{a-b}U^b \right), \end{aligned} \quad (2.18b)$$

$$\begin{aligned} -iakV^a + \frac{\partial P^a}{\partial r} = \sum_{b=-\infty}^{\infty} \left(\frac{-U^{a-b}}{1-\kappa r} \frac{\partial V^b}{\partial s} - V^{a-b} \frac{\partial V^b}{\partial r} - \frac{\kappa}{1-\kappa r} U^{a-b}U^b + ibkP^{a-b}V^b \right). \end{aligned} \quad (2.18c)$$

From here, the temporal Fourier modes are expanded about a basis of spatial *straight* duct modes

$$P^a = \sum_{p=0}^{\infty} P_p^a(s)\psi_p(s,r), \quad U^a = \sum_{p=0}^{\infty} U_p^a(s)\psi_p(s,r), \quad V^a = \sum_{p=0}^{\infty} V_p^a(s)\psi_p(s,r) \quad (2.19a,b,c)$$

where the ψ_p satisfy

$$\frac{d^2\psi_p}{dr^2} + \eta_p^2\psi_p = 0, \quad \int_{h_-}^{h_+} \psi_p\psi_q dr = \delta_{pq}, \quad \frac{\partial\psi_p}{\partial r} \Big|_{r=h_{\pm}} = 0, \quad (2.20a,b,c)$$

and are therefore given by

$$\psi_p = C_p \cos \left(p\pi \frac{(r-h_-)}{(h_+ - h_-)} \right), \quad C_p = \sqrt{\frac{2 - \delta_{p0}}{h_+ - h_-}}, \quad \eta_p = \frac{p\pi}{h_+ - h_-}. \quad (2.21a,b,c)$$

Here, we have expanded both the longitudinal and the transverse velocity components in terms of the duct basis, contrary to Félix & Pagneux (2001) who eliminated V^a from the analogous linear equations at this point. It turns out that the higher radial

derivatives that would arise from eliminating V^a from the above equations make it more complicated to apply the correct boundary conditions at the duct wall in the quadratic terms on the RHS, as described below. Projecting the equations onto the modal basis first, *then* eliminating the modal amplitudes of the transverse velocity V_p^a , turns out to be much simpler than eliminating the V^a from the above equations and then projecting onto the modal basis. At linear order, the two methods produce identical results (see appendix F).

As an aside, one may question the validity of expanding the temporal modes as a series of spatial duct modes, each with zero derivative on the boundary. This issue is dealt with in more detail in Pagneux *et al.* (1996), however we will briefly mention that this causes no difficulty, since an infinite series of terms with zero derivative at the boundary do not necessarily have a zero derivative[†]. Rather, care must be taken to apply the correct boundary conditions before expanding in terms of the ψ_p basis.

We now wish to project the above equations onto the basis of modes. We first multiply the equations by a factor $(1 - \kappa r)$, then by a general duct mode ψ_p and integrate across the duct width, ensuring to apply the no penetration boundary condition at the duct wall. This is given by

$$U^a|_{r=h_{\pm}} \cdot \mathbf{n}^{\pm} = 0, \quad \mathbf{n}^{\pm}(s) = h'_{\pm} \mathbf{e}_s - (1 - \kappa h_{\pm}) \mathbf{e}_r, \quad (2.22a,b)$$

where \mathbf{n}^{\pm} are the normals to the duct wall. This corresponds to

$$h'_{\pm} U^a = (1 - \kappa h_{\pm}) V^a \quad \text{at} \quad r = h_{\pm}. \quad (2.23)$$

(Note that this simple relation between U^a and V^a at the duct wall would have been significantly complicated by nonlinear terms had we used (2.18c) to eliminate V^a above.) Equation (2.23) can be used to eliminate V^a at the boundaries. For example (summation convention assumed),

$$\int_{h_-}^{h_+} \frac{\partial V^a}{\partial r} \psi_p \, dr = \left[\frac{h'}{1 - \kappa h} \psi_p \psi_q \right]_{h_-}^{h_+} U_q^a - \int_{h_-}^{h_+} \frac{\partial \psi_p}{\partial r} \psi_q \, dr V_q^a. \quad (2.24)$$

Similarly,

$$\int_{h_-}^{h_+} \frac{\partial U^a}{\partial s} \psi_p \, dr = \frac{\partial U_p^a}{\partial s} - [h' \psi_p \psi_q]_{h_-}^{h_+} U_q^a - \int_{h_-}^{h_+} \frac{\partial \psi_p}{\partial s} \psi_q \, dr U_q^a. \quad (2.25)$$

Other terms of note include

$$\begin{aligned} \int_{h_-}^{h_+} U^{a-b} \frac{\partial U^b}{\partial s} \psi_p \, dr &= \frac{1}{2} \frac{d}{ds} \left(\int_{h_-}^{h_+} \psi_p \psi_q \psi_r \, dr \right) U_q^{a-b} U_r^b - \frac{1}{2} [h' \psi_p \psi_q \psi_r]_{h_-}^{h_+} U_q^{a-b} U_r^b \\ &+ \frac{1}{2} \int_{h_-}^{h_+} \psi_p \psi_q \psi_r \, dr \left(U_r^b \frac{d}{ds} U_q^{a-b} + U_q^{a-b} \frac{d}{ds} U_r^b \right) - \frac{1}{2} \int_{h_-}^{h_+} \frac{\partial \psi_p}{\partial s} \psi_q \psi_r \, dr U_q^{a-b} U_r^b, \end{aligned} \quad (2.26)$$

[†] For example, the function $y(x) = x$ has the Fourier cosine series expansion $y(x) = \frac{1}{2} - \frac{4}{\pi^2} \sum_{n=0}^{\infty} \frac{1}{(2n+1)^2} \cos((2n+1)\pi x)$, convergent for $x \in [0, 1]$. At both boundaries $y(x)$ has derivative 1, despite each term in the sum having zero derivative at both boundaries.

where the sum over b has been reordered, and

$$\begin{aligned}
 \int_{h_-}^{h_+} (1 - \kappa r) V^{a-b} \frac{\partial U^b}{\partial r} \psi_p \, dr &= [h' U^{a-b} U^b \psi_p]_{h_-}^{h_+} - \int_{h_-}^{h_+} (1 - \kappa r) V^{a-b} U^b \frac{\partial \psi_p}{\partial r} \, dr \\
 &\quad + \kappa \int_{h_-}^{h_+} V^{a-b} U^b \psi_p \, dr - \int_{h_-}^{h_+} (1 - \kappa r) \frac{\partial V^{a-b}}{\partial r} U^b \psi_p \, dr \\
 &= [h' U^{a-b} U^b \psi_p]_{h_-}^{h_+} - \int_{h_-}^{h_+} (1 - \kappa r) V^{a-b} U^b \frac{\partial \psi_p}{\partial r} \, dr \\
 &\quad - \int_{h_-}^{h_+} i(a-b)k(1 - \kappa r) P^{a-b} U^b \psi_p \, dr + \int_{h_-}^{h_+} \frac{\partial U^{a-b}}{\partial s} U^b \psi_p \, dr \quad (2.27)
 \end{aligned}$$

where the linear part of (2.18a) has been used to substitute for $\partial V^{a-b}/\partial r$. Using these, equations (2.18a) and (2.18b) become

$$\begin{aligned}
 \frac{d}{ds} U_p^a - iak \Psi_{pq} [1 - \kappa r] P_q^a - \Psi_{\{p\}q} U_q^a - \Psi_{[p]q} [1 - \kappa r] V_q^a \\
 = -(ibk + iak \frac{B}{2A}) \Psi_{pqr} [1 - \kappa r] P_q^{a-b} P_r^b - ibk \Psi_{pqr} [1 - \kappa r] U_q^{a-b} U_r^b \\
 - ibk \Psi_{pqr} [1 - \kappa r] V_q^{a-b} V_r^b, \quad (2.28a)
 \end{aligned}$$

$$\begin{aligned}
 \frac{d}{ds} P_p^a - iak \Psi_{pq} [1 - \kappa r] U_q^a - \left([h' \psi_p \psi_q]_{h_-}^{h_+} + \Psi_{\{p\}q} \right) P_q^a \\
 = \left(\Psi_{\{p\}qr} - \frac{d}{ds} (\Psi_{pqr}) \right) U_q^{a-b} U_r^b + iak \Psi_{pqr} [1 - \kappa r] P_q^{a-b} U_r^b \\
 + \left(\kappa \Psi_{pqr} + \Psi_{[p]qr} [1 - \kappa r] \right) U_q^{a-b} V_r^b - \Psi_{pqr} \left(U_r^b \frac{d}{ds} U_q^{a-b} + U_q^{a-b} \frac{d}{ds} U_r^b \right). \quad (2.28b)
 \end{aligned}$$

Here, we have used Ψ as a shorthand to denote integrals over the modes. Square brackets around an index represent radial derivatives on that mode, and curly brackets represent longitudinal derivatives. The square brackets after the Ψ are the integral kernel (assumed to be 1 if no brackets are present). So for example

$$\Psi_{[p]q} = \int_{h_-}^{h_+} \frac{\partial \psi_p}{\partial r} \psi_q \, dr = (\Psi_{p[q]})^T$$

$$\Psi_{\{p\}qr} [1 - \kappa r] = \int_{h_-}^{h_+} \frac{\partial \psi_p}{\partial s} \psi_q \psi_r (1 - \kappa r) \, dr$$

We now turn our attention to (2.18c). Using the linear relationship between V and P from the left hand side of (2.18c) and the symmetry of mixed partials, we can find the linear expression for $\frac{\partial V}{\partial s}$,

$$\frac{\partial V^a}{\partial s} = \frac{1}{iak} \frac{\partial^2 P^a}{\partial s \partial r} = (1 - \kappa r) \frac{\partial U^a}{\partial r} - \kappa U^a. \quad (2.29)$$

We also require the linear expression for V_p^a in terms of P_p^a , also from the left hand side of (2.18c),

$$V_p^a = \frac{1}{iak} [\psi_p \psi_q]_{h_-}^{h_+} P_q^a - \frac{1}{iak} \Psi_{[p]q} P_q^a = \frac{1}{iak} \Psi_{p[q]} P_q^a. \quad (2.30)$$

Using these, we can eliminate V^a from the RHS of the projection of (2.18c),

$$\begin{aligned}
& -iak\Psi_{pq}[1-\kappa r]V_q^a + \left([\psi_p\psi_q(1-\kappa r)]_{h_-}^{h_+} - \Psi_{[p]q}[1-\kappa r] + \kappa\delta_{pq}\right)P_q^a \\
& = \frac{1}{2} \left(-[\psi_p\psi_q\psi_r(1-\kappa r)]_{h_-}^{h_+} + \Psi_{[p]qr}[1-\kappa r] - \kappa\Psi_{pqr} - \left[\frac{h'^2}{1-\kappa h}\psi_p\psi_q\psi_r\right]_{h_-}^{h_+} \right) U_q^{a-b}U_r^b \\
& - \frac{1}{2k^2(a-b)b} \left(\Psi_{[p]qr}[1-\kappa r] - \kappa\Psi_{pqr} \right) \left([\psi_q\psi_s]_{h_-}^{h_+} - \Psi_{[q]s} \right) \left([\psi_r\psi_t]_{h_-}^{h_+} - \Psi_{[r]t} \right) P_s^{a-b}P_t^b \\
& + \Psi_{pqr}[1-\kappa r] \left([\psi_r\psi_t]_{h_-}^{h_+} - \Psi_{[r]t} \right) P_q^{a-b}P_t^b. \tag{2.31}
\end{aligned}$$

Using (2.30) and (2.31) we can eliminate V from (2.28a) and (2.28b) to get

$$\mathbf{u}' + \mathbf{M}\mathbf{p} + \mathbf{G}\mathbf{u} = \mathcal{A}[\mathbf{u}, \mathbf{u}] + \mathcal{B}[\mathbf{p}, \mathbf{p}], \tag{2.32a}$$

$$\mathbf{p}' - \mathbf{N}\mathbf{u} - \mathbf{H}\mathbf{p} = \mathcal{C}[\mathbf{u}, \mathbf{p}] + \mathcal{D}[\mathbf{u}, \mathbf{u}] \tag{2.32b}$$

where we have switched to vector notation for ease of algebraic manipulations and a prime denotes d/ds . Matrix multiplication is defined over spatial modes in the following manner

$$(\mathbf{M}\mathbf{p})_p^a = \sum_{q=0}^{\infty} \mathbf{M}_{pq}^a P_q^a \tag{2.33}$$

Calligraphic letter denote rank 5 tensors, with square brackets denoting the following action

$$(\mathcal{A}[\mathbf{x}, \mathbf{y}])_p^a = \sum_{b=-\infty}^{\infty} \sum_{q,r=0}^{\infty} \mathcal{A}_{pqr}^{ab} X_q^{a-b} Y_r^b \tag{2.34}$$

The matrices and tensors are given by

$$\mathbf{M}_{pq}^a = -iak\mathcal{P}_{pq}[1 - \kappa r] - \frac{1}{iak}\mathcal{P}_{[p]s}[1 - \kappa r]\mathcal{P}_{s[q]}, \quad (2.35a)$$

$$\mathbf{N}_{pq}^a = iak\mathcal{P}_{pq}[1 - \kappa r], \quad (2.35b)$$

$$\mathbf{G}_{pq}^a = -\mathcal{P}_{\{p\}q}, \quad (2.35c)$$

$$\mathbf{H}_{pq}^a = -\mathcal{P}_{p\{q\}}, \quad (2.35d)$$

$$\mathcal{A}_{pqr}^{ab} = -ibk\mathcal{P}_{pqr}[1 - \kappa r] \quad (2.35e)$$

$$\begin{aligned} & -\frac{1}{2}\mathcal{P}_{[p]s}[1 - \kappa r](\mathbf{N}^{-1})_{st}^a \left(-[\psi_t\psi_q\psi_r(1 - \kappa r)]_{h_-}^{h_+} + \mathcal{P}_{[t]qr}[1 - \kappa r] \right. \\ & \left. - \kappa\mathcal{P}_{tqr} - \left[\frac{h'^2}{1 - \kappa h} \psi_t\psi_q\psi_r \right]_{h_-}^{h_+} \right), \end{aligned}$$

$$\mathcal{B}_{pqr}^{ab} = -(ibk + iak\frac{B}{2A})\mathcal{P}_{pqr}[1 - \kappa r] - \frac{1}{i(a-b)k} \underbrace{\mathcal{P}_{pst}[1 - \kappa r]\mathcal{P}_{s[q]}\mathcal{P}_{t[r]}}_{\mathcal{P}_{p[q][r][1-\kappa r]}} \quad (2.35f)$$

$$\begin{aligned} & -\mathcal{P}_{[p]s}[1 - \kappa r](\mathbf{N}^{-1})_{st}^a \left(\frac{-1}{2k^2(a-b)b} \left(\mathcal{P}_{[t]uv}[1 - \kappa r] - \kappa\mathcal{P}_{tuv} \right) \mathcal{P}_{u[q]}\mathcal{P}_{v[r]} \right. \\ & \left. + \mathcal{P}_{tqu}[1 - \kappa r]\mathcal{P}_{u[r]} \right), \end{aligned}$$

$$\mathcal{C}_{pqr}^{ab} = iak\mathcal{P}_{pqr}[1 - \kappa r] + \frac{1}{ibk} \underbrace{\left(\kappa\mathcal{P}_{pqs} + \mathcal{P}_{[p]qs}[1 - \kappa r] \right)}_{\kappa\mathcal{P}_{p[q][r]} + \mathcal{P}_{[p]q[r][1-\kappa r]}} \mathcal{P}_{s[r]} + 2\mathcal{P}_{pqs}\mathbf{M}_{sr}^b, \quad (2.35g)$$

$$\mathcal{D}_{pqr}^{ab} = \mathcal{P}_{\{p\}qr} - \frac{d}{ds}(\mathcal{P}_{pqr}) + 2\mathcal{P}_{pqs}\mathbf{G}_{sr}^b. \quad (2.35h)$$

The \mathcal{P} can also be calculated analytically (see appendix B). Here, $\mathbf{M}, \mathbf{N}, \mathcal{A}, \mathcal{B}$ and \mathcal{C} encode the curvature of the duct, while \mathbf{G}, \mathbf{H} and \mathcal{D} arise from variation in the duct width, vanishing when it is uniform.

Due to the presence of evanescent modes these equations are numerically unstable and cannot be integrated directly (Pagneux *et al.* 1996). Following the work of Félix & Pagneux (2001), we define a relation between the pressure and velocity in terms of the admittance. When solving for pressure it is easier to work with the admittance rather than the impedance to avoid inverting large matrices in the work that will follow.

The following relationship is defined

$$\mathbf{u} = \mathbf{Y}\mathbf{p} + \mathcal{Y}[\mathbf{p}, \mathbf{p}] \quad (2.36)$$

where $\mathbf{Y} = \mathbf{Y}(s)$ is the linear part of the admittance ($\mathbf{Y} = \mathbf{Z}^{-1}$ where \mathbf{Z} is the impedance matrix of Félix & Pagneux (2001)) and $\mathcal{Y} = \mathcal{Y}(s)$ is the second order nonlinear correction to the impedance, henceforth referred to as the ‘nonlinear admittance’ term. We differentiate (2.36) with respect to s ,

$$\mathbf{u}' = \mathbf{Y}'\mathbf{p} + \mathbf{Y}\mathbf{p}' + \mathcal{Y}'[\mathbf{p}, \mathbf{p}] + \mathcal{Y}[\mathbf{p}', \mathbf{p}] + \mathcal{Y}[\mathbf{p}, \mathbf{p}'], \quad (2.37)$$

substitute in (2.32a) and (2.32b),

$$- \mathbf{M}\mathbf{p} - \mathbf{G}\mathbf{u} + \mathcal{A}[\mathbf{u}, \mathbf{u}] + \mathcal{B}[\mathbf{p}, \mathbf{p}] = \mathbf{Y}'\mathbf{p} + \mathbf{Y}(\mathbf{N}\mathbf{u} + \mathbf{H}\mathbf{p} + \mathcal{C}[\mathbf{u}, \mathbf{p}] + \mathcal{D}[\mathbf{u}, \mathbf{u}]) \\ + \mathcal{Y}'[\mathbf{p}, \mathbf{p}] + \mathcal{Y}[\mathbf{N}\mathbf{u} + \mathbf{H}\mathbf{p}, \mathbf{p}] + \mathcal{Y}[\mathbf{p}, \mathbf{N}\mathbf{u} + \mathbf{H}\mathbf{p}] \quad (2.38)$$

and use (2.36) to express \mathbf{u} in terms of \mathbf{p}

$$- \mathbf{M}\mathbf{p} - \mathbf{G}\mathbf{Y}\mathbf{p} - \mathbf{G}\mathcal{Y}[\mathbf{p}, \mathbf{p}] + \mathcal{A}[\mathbf{Y}\mathbf{p}, \mathbf{Y}\mathbf{p}] + \mathcal{B}[\mathbf{p}, \mathbf{p}] = \mathbf{Y}'\mathbf{p} + \mathbf{Y}(\mathbf{N}\mathbf{Y}\mathbf{p} + \mathbf{N}\mathcal{Y}[\mathbf{p}, \mathbf{p}] \\ + \mathbf{H}\mathbf{p} + \mathcal{C}[\mathbf{Y}\mathbf{p}, \mathbf{p}] + \mathcal{D}[\mathbf{Y}\mathbf{p}, \mathbf{Y}\mathbf{p}]) + \mathcal{Y}'[\mathbf{p}, \mathbf{p}] + \mathcal{Y}[\mathbf{N}\mathbf{Y}\mathbf{p} + \mathbf{H}\mathbf{p}, \mathbf{p}] + \mathcal{Y}[\mathbf{p}, \mathbf{N}\mathbf{Y}\mathbf{p} + \mathbf{H}\mathbf{p}] \quad (2.39)$$

This equation has two distinct orders of magnitude: terms linear in \mathbf{p} , and terms quadratic in \mathbf{p} . We can equate linear terms and the quadratic terms separately to get two distinct equations

$$\mathbf{Y}'\mathbf{p} + \mathbf{Y}\mathbf{N}\mathbf{Y}\mathbf{p} + \mathbf{M}\mathbf{p} + \mathbf{Y}\mathbf{H}\mathbf{p} + \mathbf{G}\mathbf{Y}\mathbf{p} = 0, \quad (2.40a)$$

$$\mathcal{Y}'[\mathbf{p}, \mathbf{p}] + \mathcal{Y}[\mathbf{N}\mathbf{Y}\mathbf{p}, \mathbf{p}] + \mathcal{Y}[\mathbf{p}, \mathbf{N}\mathbf{Y}\mathbf{p}] + \mathbf{Y}\mathbf{N}\mathcal{Y}[\mathbf{p}, \mathbf{p}] + \mathbf{Y}\mathcal{C}[\mathbf{Y}\mathbf{p}, \mathbf{p}] - \mathcal{A}[\mathbf{Y}\mathbf{p}, \mathbf{Y}\mathbf{p}] \\ - \mathcal{B}[\mathbf{p}, \mathbf{p}] + \mathcal{Y}[\mathbf{H}\mathbf{p}, \mathbf{p}] + \mathcal{Y}[\mathbf{p}, \mathbf{H}\mathbf{p}] + \mathbf{G}\mathcal{Y}[\mathbf{p}, \mathbf{p}] + \mathbf{Y}\mathcal{D}[\mathbf{Y}\mathbf{p}, \mathbf{Y}\mathbf{p}] = 0 \quad (2.40b)$$

Equation (2.39) will therefore be solved, for any \mathbf{p} , provided the linear part of the admittance and the nonlinear part of the admittance satisfy

$$\mathbf{Y}' + \mathbf{Y}\mathbf{N}\mathbf{Y} + \mathbf{M} + \mathbf{Y}\mathbf{H} + \mathbf{G}\mathbf{Y} = 0 \quad (2.41a)$$

$$\mathcal{Y}'[\mathbf{I}, \mathbf{I}] + \mathcal{Y}[\mathbf{N}\mathbf{Y}, \mathbf{I}] + \mathcal{Y}[\mathbf{I}, \mathbf{N}\mathbf{Y}] + \mathbf{Y}\mathbf{N}\mathcal{Y}[\mathbf{I}, \mathbf{I}] + \mathbf{Y}\mathcal{C}[\mathbf{Y}, \mathbf{I}] - \mathcal{A}[\mathbf{Y}, \mathbf{Y}] \\ - \mathcal{B}[\mathbf{I}, \mathbf{I}] + \mathcal{Y}[\mathbf{H}, \mathbf{I}] + \mathcal{Y}[\mathbf{I}, \mathbf{H}] + \mathbf{G}\mathcal{Y}[\mathbf{I}, \mathbf{I}] + \mathbf{Y}\mathcal{D}[\mathbf{Y}, \mathbf{Y}] = 0, \quad (2.41b)$$

where $\mathbf{I}_{pq}^a = \delta_{pq} \forall a$ is the identity tensor. Here, the square bracket notation acting on matrices denotes

$$(\mathbf{Z}\mathcal{A}[\mathbf{X}, \mathbf{Y}])_{pqr}^{ab} = \sum_{s,t,u=0}^{\infty} \mathbf{Z}_{pu}^a \mathcal{A}_{ust}^{ab} \mathbf{X}_{sq}^{a-b} \mathbf{Y}_{tr}^b \quad (2.42)$$

These equations are solved from the outlet of the duct—where an appropriate radiation condition boundary condition is imposed—to the inlet. Once both parts of the admittance are found throughout the duct, they can be used to express the velocity modes in terms of pressure modes in (2.32b). The result is a numerically stable first order equation for the pressure which can be solved from the inlet to the outlet using suitable initial conditions at the inlet to describe the waveform (both temporally and spatially) there,

$$\mathbf{p}' = \mathbf{N}\mathbf{Y}\mathbf{p} + \mathbf{N}\mathcal{Y}[\mathbf{p}, \mathbf{p}] + \mathcal{C}[\mathbf{Y}\mathbf{p}, \mathbf{p}] + \mathbf{H}\mathbf{p} + \mathcal{D}[\mathbf{Y}\mathbf{p}, \mathbf{Y}\mathbf{p}] \quad (2.43)$$

Due to the varying admittance this equation takes into account a superposition of forwards and backwards travelling modes, as determined by the radiation condition at the outlet and any reflections due to the varying duct geometry, as well as the nonlinear interactions between modes. As such, this method is suitable for ducts where reflected waves are important, such as those that are curved or have an open/closed exit. For details of how to decompose this wave into its forward and backward propagating modes using a linear and nonlinear reflection coefficient, see section 7.

To summarize the proposed method, for a given duct and a given frequency, equations (2.41a) and (2.41b) need to be solved from the duct outlet, where an appropriate radiation condition is imposed, to the duct inlet. These equations are independent of the actual forcing at the inlet, and characterize the linear and weakly nonlinear response of

the duct at the given frequency. One result of this is the linear and nonlinear admittance at the duct inlet, given by (2.36), which describes the input admittance of the duct and generalizes the usual linear admittance to include Mach number dependent effects. Given the pressure forcing at the inlet, equation (2.43) may be solved from the inlet to the outlet to give the pressure oscillation at all points in the duct. In general, solving (2.41a) and (2.41b) is performed numerically, although analytic progress may be made in certain simplifying cases. One such case is a 1D straight duct, given in appendix C. Another such case is a uniform constant-curvature duct, the solution to which may be used as the downstream impedance boundary condition for more complicated ducts, which we consider next.

3. An Infinite Uniform Duct

Consider an infinitely long uniform duct of constant curvature for which we have only outgoing propagating waves and decaying evanescent waves. In such a duct no point can be distinguished from another longitudinally, therefore we must have the admittance being a fixed point of the admittance equations. To find the fixed points, we begin by combining (2.32a) and (2.32b) (ignoring the quadratic terms for the moment), to form a second order ODE for the pressure modes

$$\mathbf{p}'' + \mathbf{NM}\mathbf{p} = 0 \quad (3.1)$$

Here we are considering a uniform duct of constant curvature, so \mathbf{G} , \mathbf{H} and the derivatives of \mathbf{M} and \mathbf{N} vanish. As previously noted, this equation is numerically unstable. We can however make progress analytically. The solution in terms of forward and backwards modes is given by

$$\mathbf{p} = \mathbf{p}^+ + \mathbf{p}^- = \sum_{i=1}^{\infty} (c_i^+ \mathbf{v}_i e^{i\lambda_i s} + c_i^- \mathbf{v}_i e^{-i\lambda_i s}) \quad (3.2)$$

where the \mathbf{v}_i are the eigenvectors of \mathbf{NM} with eigenvalues λ_i^2 , with arbitrary c_i^+ and c_i^- . Here, we have split the solution into forward and backward waves. The roots of the λ_i are chosen as follows

$$\lambda_i = \begin{cases} (\lambda_i^2)^{1/2} & \lambda_i^2 > 0 \\ i(-\lambda_i^2)^{1/2} & \lambda_i^2 < 0. \end{cases} \quad (3.3)$$

to ensure either propagating or decaying evanescent modes in the positive direction. Based on extensive numerical evaluations, we observe that all of the eigenvectors of \mathbf{NM} are real (even though \mathbf{NM} it is not necessarily symmetric for $\kappa \neq 0$). We now introduce the characteristic forward and backwards admittance, linearly relating the forwards and backwards modes

$$\mathbf{u}^\pm = \mathbf{Y}^\pm \mathbf{p}^\pm \quad (3.4)$$

Using this, together with the linear equation relating pressure and velocity $(\mathbf{p}^\pm)' = \mathbf{N}\mathbf{u}^\pm$, we obtain an expression for \mathbf{Y}^\pm

$$\mathbf{Y}^\pm = \pm \mathbf{N}^{-1} \mathbf{V} \Lambda \mathbf{V}^{-1} = \pm i \mathbf{N}^{-1} \sqrt{\mathbf{NM}} \quad (3.5)$$

where $\mathbf{V} = (\mathbf{v}_1, \mathbf{v}_2, \dots)$ and $\Lambda = \text{diag}(i\lambda_1, i\lambda_2, \dots)$. These can be shown to be fixed points of the linear admittance equation by direct substitution into (2.41a) (again, ignoring \mathbf{G} and \mathbf{H} as the duct is assumed uniform)

$$\mathbf{Y}^{\pm'} = \mathbf{N}^{-1} \sqrt{\mathbf{NM}} \mathbf{N}^{-1} \sqrt{\mathbf{NM}} - \mathbf{M} = 0 \quad (3.6)$$

Therefore, $\mathbf{Y} = \mathbf{Y}^+$ is the admittance of a uniform, constant-curvature duct supporting only outgoing propagating waves and decaying evanescent waves.

Using these characteristic linear admittances, we now wish to find the fixed points of the nonlinear admittance in equation (2.41b). In order to do so we first introduce a matrix \mathbf{W} with columns given by the eigenvectors of $\mathbf{Y}^\pm \mathbf{N}$ with corresponding eigenvalue matrix $\pm \Lambda$. Fixed points of the nonlinear admittance equation satisfy

$$\mathcal{Y}^\pm[\mathbf{N}\mathbf{Y}^\pm, \mathbf{I}] + \mathcal{Y}^\pm[\mathbf{I}, \mathbf{N}\mathbf{Y}^\pm] + \mathbf{Y}^\pm \mathbf{N} \mathcal{Y}^\pm[\mathbf{I}, \mathbf{I}] + \mathbf{Y}^\pm \mathcal{C}[\mathbf{Y}^\pm, \mathbf{I}] - \mathcal{A}[\mathbf{Y}^\pm, \mathbf{Y}^\pm] - \mathcal{B}[\mathbf{I}, \mathbf{I}] = 0 \quad (3.7)$$

We apply \mathbf{W}^{-1} on the left of this equation and \mathbf{V} to the right on both terms in the square brackets

$$\begin{aligned} \mathbf{W}^{-1} \mathcal{Y}^\pm[\pm \mathbf{V} \Lambda, \mathbf{V}] + \mathbf{W}^{-1} \mathcal{Y}^\pm[\mathbf{V}, \pm \mathbf{V} \Lambda] + \mathbf{W}^{-1} \mathbf{Y}^\pm \mathbf{N} \mathcal{Y}^\pm[\mathbf{V}, \mathbf{V}] + \\ \mathbf{W}^{-1} \mathbf{Y}^\pm \mathcal{C}[\mathbf{Y}^\pm \mathbf{V}, \mathbf{V}] - \mathbf{W}^{-1} \mathcal{A}[\mathbf{Y}^\pm \mathbf{V}, \mathbf{Y}^\pm \mathbf{V}] - \mathbf{W}^{-1} \mathcal{B}[\mathbf{V}, \mathbf{V}] = 0 \end{aligned} \quad (3.8)$$

where we recall that \mathbf{V} , \mathbf{W} and Λ each have an upper index and the matrix square bracket algebra is defined by (2.42). Next, we transform \mathcal{Y}^\pm in the following manner

$$\mathcal{Y}^\pm[\mathbf{x}, \mathbf{y}] = \mathbf{W} \tilde{\mathcal{Y}}^\pm[\mathbf{V}^{-1} \mathbf{x}, \mathbf{V}^{-1} \mathbf{y}] \quad (3.9)$$

to obtain

$$\begin{aligned} \tilde{\mathcal{Y}}^\pm[\pm \Lambda, \mathbf{I}] + \tilde{\mathcal{Y}}^\pm[\mathbf{I}, \pm \Lambda] \pm \Lambda \tilde{\mathcal{Y}}^\pm[\mathbf{I}, \mathbf{I}] \\ + \mathbf{W}^{-1} \mathbf{Y}^\pm \mathcal{C}[\mathbf{Y}^\pm \mathbf{V}, \mathbf{V}] - \mathbf{W}^{-1} \mathcal{A}[\mathbf{Y}^\pm \mathbf{V}, \mathbf{Y}^\pm \mathbf{V}] - \mathbf{W}^{-1} \mathcal{B}[\mathbf{V}, \mathbf{V}] = 0 \end{aligned} \quad (3.10)$$

As we are acting $\tilde{\mathcal{Y}}$ on purely diagonal matrices, its components can easily be read off

$$\left(\tilde{\mathcal{Y}}^\pm\right)_{pqr}^{ab} = \frac{(\mathbf{W}^{-1} \mathcal{A}[\mathbf{Y}^\pm \mathbf{V}, \mathbf{Y}^\pm \mathbf{V}] + \mathbf{W}^{-1} \mathcal{B}[\mathbf{V}, \mathbf{V}] - \mathbf{W}^{-1} \mathbf{Y}^\pm \mathcal{C}[\mathbf{Y}^\pm \mathbf{V}, \mathbf{V}])_{pqr}^{ab}}{\pm i \lambda_p^a \pm i \lambda_q^{a-b} \pm i \lambda_r^b} \quad (3.11)$$

The reverse transformation is then applied to obtain the characteristic nonlinear part of the admittance. It can easily be seen that $\mathcal{Y}^+ = -\mathcal{Y}^-$. As the equation governing \mathcal{Y} is linear, the \mathcal{Y}^+ is unique (up to the equivalence class under summation—see appendix D) for a given choice of \mathbf{Y}^+ .

The linear and nonlinear impedances $\mathbf{Y} = \mathbf{Y}^+$ and $\mathcal{Y} = \mathcal{Y}^+$ for a uniform constant-curvature duct may be used as a downstream boundary condition to (2.41a) and (2.41b) for arbitrary ducts. The solutions $\mathbf{Y} = \mathbf{Y}^+$ and $\mathcal{Y} = \mathcal{Y}^+$ correspond to the radiation condition

$$\mathbf{u} = \mathbf{Y}^+ \mathbf{p} + \mathcal{Y}^+[\mathbf{p}, \mathbf{p}] \quad (3.12)$$

relating pressure and velocity modes at the exit, implying only outgoing waves and decaying evanescent waves in the uniform duct outlet of constant curvature.

3.1. Stability of fixed points of the admittance

One may question the stability of these fixed points by considering a small perturbation. For the linear part of the admittance take a small matrix perturbation ε

$$\mathbf{Y}^\pm = \pm \mathbf{N}^{-1} \mathbf{V} \Lambda \mathbf{V}^{-1} + \mathbf{N}^{-1} \mathbf{V} \varepsilon \mathbf{V}^{-1} \quad (3.13)$$

In equation (2.41a) this becomes

$$\varepsilon' = \mp \varepsilon \Lambda \mp \Lambda \varepsilon + \mathcal{O}(\varepsilon^2) \quad (3.14)$$

Hence, \mathbf{Y}^+ is (at least Lyapunov) stable to small perturbations provided all the components of Λ have $\text{Re} \Lambda \leq 0$ (remembering that we are solving in the negative s direction,

so a positive exponential solution corresponds to a decaying perturbation) which is the case given our choice of decaying evanescent solutions. In a physical situation, we would in fact expect all of the components of Λ to have at least a small negative real part (due to losses in the system), in which case this would be an asymptotically stable fixed point. On the other hand, due to the opposite signs our \mathbf{Y}^- can be seen to be unstable (it is possible to form a stable \mathbf{Y}^- corresponding to backwards propagating waves with forward decaying evanescent modes, however these would be unphysical). This justifies the use of \mathbf{Y}^+ as a boundary condition for our linear admittance.

Similarly for the nonlinear part of the admittance consider a corresponding tensor perturbation ε

$$\mathcal{Y} = \mathcal{Y}^+ + \mathbf{W}\varepsilon[\mathbf{V}^{-1}, \mathbf{V}^{-1}] \quad (3.15)$$

In equation (2.41*b*), we get

$$\varepsilon'[\mathbf{I}, \mathbf{I}] = -\varepsilon[\Lambda, \mathbf{I}] - \varepsilon[\mathbf{I}, \Lambda] - \Lambda\varepsilon[\mathbf{I}, \mathbf{I}] \quad (3.16)$$

So similarly, we have (at least Lyapunov) stability provided all the components of Λ have $\text{Re}\Lambda \leq 0$, again justifying the use of \mathcal{Y}^+ as a boundary condition for the nonlinear admittance.

4. Numerical Method

To implement our method we truncate the summations at a_{\max} temporal harmonics and p_{\max} spatial modes. We shall not go into great detail on the convergence of this method with respect to the number of modes taken, but one can expect a Fourier series type convergence temporally. Spatially, the number of modes required varies greatly on the shape of the duct—uniform ducts typically require fewer modes than variable width ones to the correctly apply the boundary conditions. For an example of convergence, we consider the uniform curved duct described later in section 5.4 with sinusoidal planar source and $M = 0.10$. We define the error to be

$$\text{error} = \frac{\int_0^{2\pi/\omega} \int_0^{s_{\max}} \int_{h_-}^{h_+} |p - p_{\text{ref}}| \, dr \, ds \, dt}{\int_0^{2\pi/\omega} \int_0^{s_{\max}} \int_{h_-}^{h_+} |p_{\text{ref}}| \, dr \, ds \, dt} \quad (4.1)$$

We take our our reference pressure p_{ref} to be the solution produced by 10 spatial and 10 temporal modes. Figure 2 shows the error resulting from varying the number of spatial modes with fixed number of temporal and vice versa. Varying the number of spatial modes we obtain convergence $\sim 1/N^{3.21}$. This is almost identical to the value obtained by Félix & Pagneux (2001). Varying the number of temporal modes we obtain convergence $\sim 1/N^{1.28}$. This number is dependant on the Mach number with smaller Mach numbers resulting in a greater convergence. For high Mach numbers the solution is described by a sawtooth wave throughout most of the duct (see appendix C) for which the convergence of the Fourier series is $\sim 1/N$. This gives the lower bound on the convergence.

Convergence of the pressure solution can take quite a few modes (and consequently a large amount of computational time), depending on the frequency, Mach number and duct geometry, and in any given case a convergence study such as given in figure 2 would be needed to confirm convergence. However, good approximations can be made with very few modes — indeed many of the duct properties calculated later (such as power output and reflectance) can be calculated with good accuracy with as few as 5 spatial / 5 temporal modes for the parameters considered.

For the remainder of the paper we shall be dealing with ducts with an infinite uniform

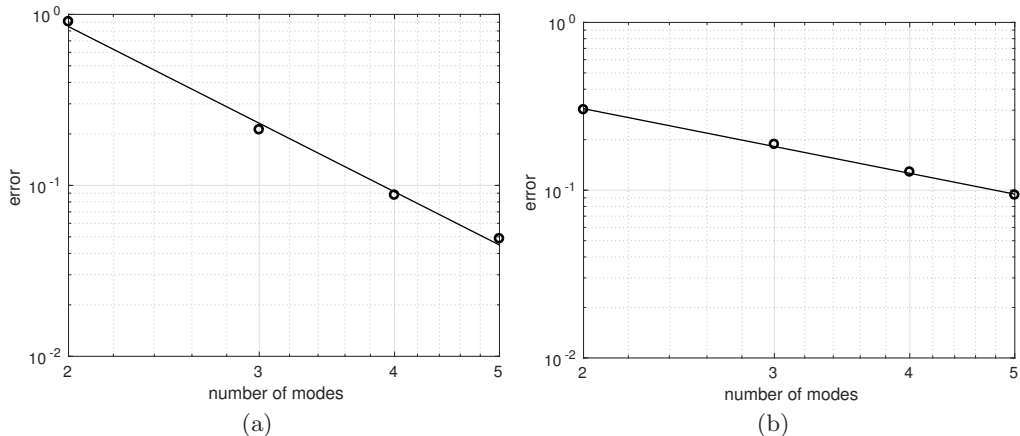


FIGURE 2. Convergence of the method for (a) fixed number of temporal modes and (b) fixed number of spatial modes

outlet. As such, we set $\mathbf{Y} = \mathbf{Y}^+$ for the initial condition of (2.41a) and solve backwards through the duct to calculate $\mathbf{Y} = \mathbf{Y}(s)$ at every point in the duct. Next, we solve (2.41b) with initial condition $\mathcal{Y} = \mathcal{Y}^+$. Again, we solve backwards through the duct using the previously found values of \mathbf{Y} in our evaluations of (2.41b). Finally we solve (2.43) *forwards* through the duct using both the previously found \mathbf{Y} and \mathcal{Y} in the evaluations of the equation. For the initial condition of the pressure we will generally be using a sinusoidal plane piston source so that

$$P_p^a(0) = \frac{1}{2} \sqrt{h_+(0) - h_-(0)} M \delta_{p0} \delta^{|a|} \quad (4.2)$$

Many other pressure sources can be modelled, with initial conditions chosen by decomposing the desired initial waveform into the modal / Fourier basis. Once both \mathbf{Y} and \mathcal{Y} are found throughout the duct for a particular wavenumber k , different pressure waveforms and amplitudes can be solved for without re-evaluation of (2.41a) and (2.41b).

To solve (2.41a) and (2.41b) we use a fixed step RK4 algorithm. For most cases this is adequate. Due to the temporally decoupled nature of these equations a high degree of parallelisation is possible. Indeed, when taking a_{\max} temporal modes there are $3a_{\max}(a_{\max} - 1)/2$ independent equations for \mathcal{Y} (for each $a \in [1, a_{\max}]$ we have $b \in [a - a_{\max}, a_{\max}]$ minus the cases when $b = 0$ or $a = b$) which can be solved in parallel. An issue, however, with this method is the large size of \mathcal{Y} which scales like $O(a_{\max}^2 p_{\max}^3)$ with number of spatial modes p_{\max} . As a result, computational memory can be an issue. To overcome this, we opt to use a first order exponential integrator method for the pressure as this requires the calculation and evaluation of \mathcal{Y} at fewer points.

If we consider the equation for the pressure as the sum of a linear operator \mathbf{L} acting on \mathbf{p} and a nonlinear part \mathcal{N}

$$\mathbf{p}' = \mathbf{L}\mathbf{p} + \mathcal{N} \quad (4.3)$$

the exact solution is given by

$$\mathbf{p}(s) = \exp\left(\int_0^s \mathbf{L}(t) dt\right) \mathbf{p}(0) + \int_0^s \exp\left(\int_t^s \mathbf{L}(u) du\right) \mathcal{N}(t) dt \quad (4.4)$$

We now consider a small step δs and make the approximation that both \mathbf{L} and \mathcal{N} are constant over this interval (in many cases this is valid — for infinite uniform ducts of constant curvature \mathbf{L} is a fixed point and so this method provides the correct solution to

the linear problem), we obtain our stepping algorithm

$$\mathbf{p}(s + \delta s) = \exp(\delta s \mathbf{L}(s)) \mathbf{p}(s) - \mathbf{L}^{-1} \left(\mathbf{I} - \exp(\delta s \mathbf{L}(s)) \right) \mathcal{N}(s) \quad (4.5)$$

Matrix exponentiation was performed using a Fortran 90 routine written by John Burkardt based on the scaling and squaring algorithm used in MATLAB (see Moler & Van Loan 2003). Other matrix operations were performed using LAPACK routines (Anderson *et al.* 1999). Running the code on an 8 core 3.40GHz i7 processor with 15GB of RAM can take the order of tens of minutes when running 5 spatial / 5 temporal modes, up to the order of several hours when running 10+ spatial / 10+ temporal modes.

4.1. Numerical Viscosity

To overcome the errors (and numerical instabilities that can arise thereof) associated with truncation of the infinite series we add a numerical viscosity. If one considers (see C 9 in appendix C, where we demonstrated the sawtooth wave as a solution to our equations), we can calculate the exact error associated with a finite truncation

$$\text{error} = \frac{i\beta k M^2 \sqrt{h_+ - h_-}}{(1 + \sigma)^2} e^{iaks} \left(\sum_{b=a-a_{\max}}^{a_{\max}} \frac{a}{2(a-b)b(1+\sigma)^2} - \sum_{b=-\infty}^{\infty} \frac{a}{2(a-b)b(1+\sigma)^2} \right), \quad (4.6)$$

where $\beta = 1 + B/2A$ and $\sigma = s/(\beta M k)$ is the distance normalized by the shock formation distance. After some algebra, this can be found to give

$$\text{error} = \frac{i\beta k M^2 \sqrt{h_+ - h_-}}{(1 + \sigma)^2} e^{iaks} \sum_{b=0}^a \frac{1}{a_{\max} - b} \quad (4.7)$$

The summation can be approximated to $-\log(1 - \frac{a}{a_{\max}})$ using Euler's asymptotic expansion of the harmonic numbers. The factor multiplying this is proportional to the pressure. This gives us a numerical viscosity term which can be deduced from the RHS of our pressure equation

$$-\frac{\beta M k a}{1 + \sigma} \log\left(1 - \frac{a}{a_{\max}}\right) P^a \quad (4.8)$$

For $a \ll a_{\max}$ the logarithm can be Taylor expanded. For small distances we obtain the mode number squared numerical viscosity used by other authors (e.g. Fernando *et al.* 2011)

$$\frac{\beta M k a^2}{a_{\max}} P^a \quad (4.9)$$

however the logarithmic error is more accurate and provides better numerical results, and shall be used for the remainder of the paper. We incorporate the viscosity by modification of \mathbf{L} :

$$\mathbf{L}^a \mapsto \mathbf{L}^a + \frac{\beta M k a}{1 + \sigma} \log\left(1 - \frac{a}{a_{\max}}\right) \mathbf{I}^a \quad (4.10)$$

As the sawtooth shape is the limiting form of all weakly nonlinear wave propagation (and the most harmonically rich) this provides a very good least upper bound for viscosity, preventing a ‘‘pooling’’ of energy at truncation and ensuring that the simulations remain stable without compromising the solution unduly.

4.2. Ducts of Increasing Width

As observed by Pagneux *et al.* (1996), ducts increasing in width — particularly those with a large degree of flare — exhibit a strong degree of coupling between spatial modes. This coupling can prove problematic numerically, especially when a large number of spatial modes are retained. To ensure good accuracy in \mathbf{Y} and especially in \mathcal{Y} , one must take smaller step sizes in the integration scheme as one increases p_{\max} . This further compounds the issue of computational complexity with increasing p_{\max} already noted.

A workaround to this issue is to truncate the number of spatial modes in proportion to the change in duct width. We retain the number of modes p_{ret} given by

$$p_{\text{ret}} = \left\lceil p_{\max} \frac{h_+(s) - h_-(s)}{h_{\max}} \right\rceil \quad (4.11)$$

So, in an increasing width duct, as we solve backwards for \mathbf{Y} and \mathcal{Y} we truncate more modes as we approach the inlet. Then, solving forwards for the pressure, we start with a reduced number of modes and include more as we approach the exit. In practice, where solutions remain stable, with a sufficient maximum number of modes, this truncation makes little difference to the output—the transverse resolution is still preserved. This issue does not arise in ducts of decreasing width as modes undergo cut-off rather than cut-on, however an unrelated mathematical difficulty does appear and is discussed in section 5.5.

5. Results

We now validate our method against previously published work and examine the effect of adding non-linearity into problems where only linear acoustics was previously considered.

5.1. 1D Duct

In appendix C we show analytically that our method recovers both the Fubini (pre shock) and sawtooth ($\sigma > 3$) waves as solutions, where

$$\sigma = \frac{s}{\beta M k} \quad (5.1)$$

is the distance normalized to the shock formation distance ($\beta = 1 + \frac{B}{2A}$). We now compare our numerical solution to the Blackstock solution—an asymptotic matching between the Fubini and sawtooth solutions (Blackstock 1966). This has modal amplitudes given by

$$B_n = \underbrace{\frac{2}{n\pi} P_{\text{sh}}}_{\text{Sawtooth}} + \underbrace{\frac{2}{n\pi\sigma} \int_{\Phi_{\text{sh}}}^{\pi} \cos n(\Phi - \sigma \sin \Phi) d\Phi}_{\text{Fubini}} \quad (5.2)$$

for P_{sh} and Φ_{sh} satisfying

$$P_{\text{sh}} = \sin(\sigma P_{\text{sh}}), \quad \Phi_{\text{sh}} = \sigma \sin \Phi_{\text{sh}} \quad (5.3)$$

Figure 3 shows the modal amplitudes plotted against distance through the duct normalised in terms of the shock formation distance, comparing our method with the Blackstock solution. Truncation was taken at 100 modes. Excellent agreement can be seen up to the 80th mode and as far as 10 times the shock formation distance. Even for modes above this the agreement is still very good — there is a slight underestimation at

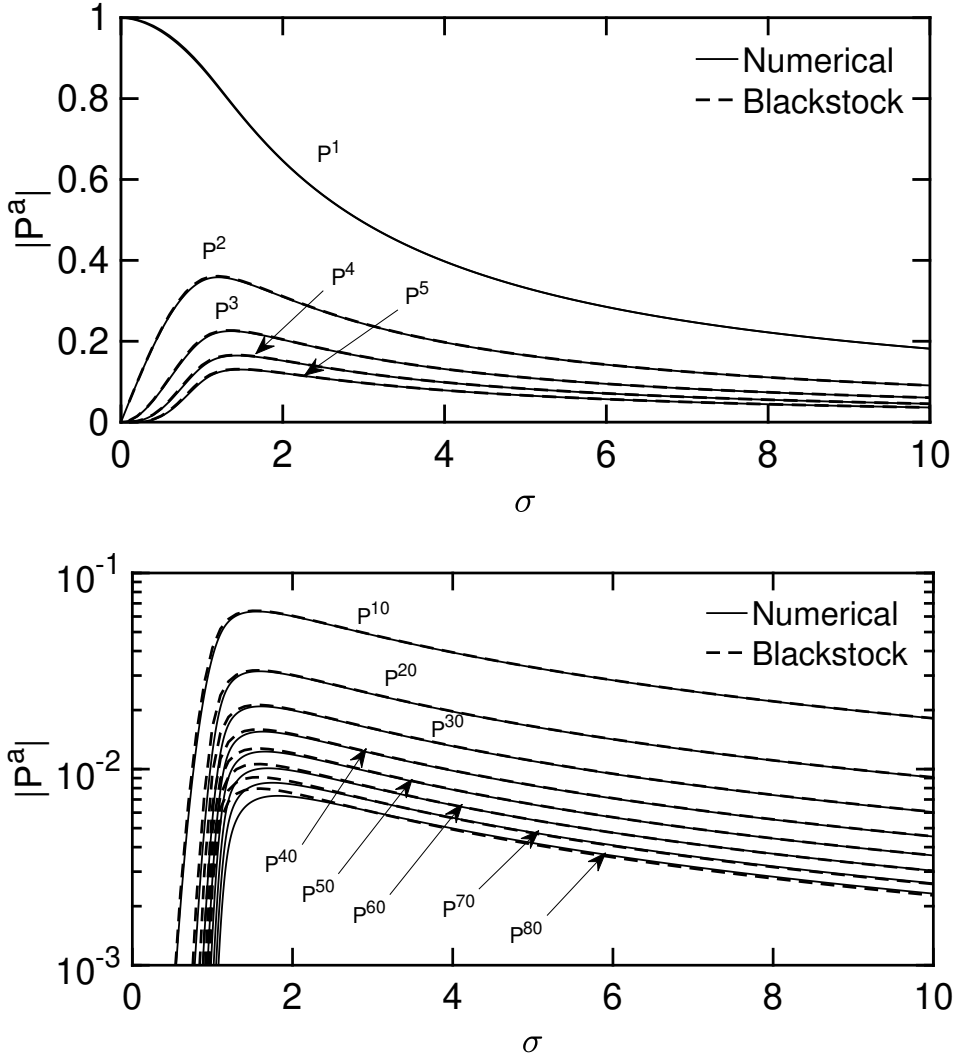


FIGURE 3. Comparison of modal amplitudes along the waveguide between our method and the analytic Blackstock solution for (top) modes 1-5 and (bottom) modes 10-80.

the point of shock formation with modal peaks occurring slightly further down the duct, however beyond that the error never exceeds 5% even for the 100th mode.

5.2. 2D Straight Duct

The case of nonplanar wave propagation in a 2D waveguide was dealt with by Fernando *et al.* (2011). In appendix D we give a partial proof of the equivalence of our method with theirs. Here, we consider a numerical example from that paper to demonstrate the equivalence of our methods. Figure 4 shows the result of sending a finite amplitude plane wave down a rigid 2D waveguide at an angle of 84° . The frequency corresponds to $kh = 3.16$. The pressure scan is taken at the shock formation distance over one time period. Truncation was taken at 20 spatial / 20 temporal modes. If one compares with

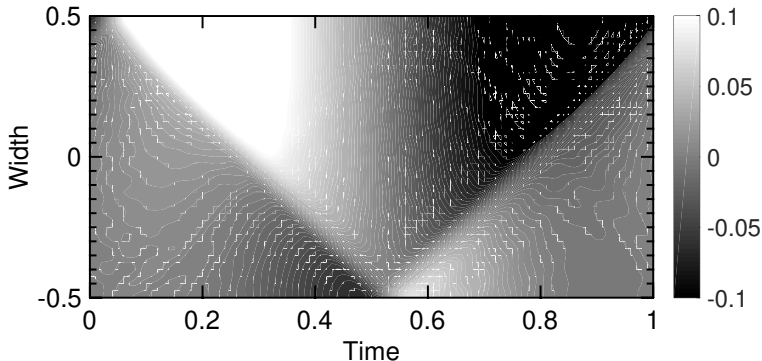


FIGURE 4. Pressure scan at 1 times the shock formation distance of the shock produced by a planar wave at 84° . Compare with figure 3 from Fernando *et al.* (2011).

figure 3 from said paper, one can see good qualitative agreement between the two, both giving rise to oblique shocks.

In dealing with the nonlinear admittance numerically (something which isn't strictly necessary for an infinite uniform straight duct) we are forced to take fewer modes due to memory limitations than for the previous 1D case. One could overcome this by substituting the analytical expression for \mathcal{Y} into the pressure equation and simplifying. Such an equation would be more advantageous (for a uniform straight duct) than both methods discussed here — it would require less memory so a better resolution could be obtained, and it would also permit evanescent modes to be solved for. However, since it would not generalize to curved ducts, we do not pursue this further here.

5.3. Variable Width Straight Duct

We now turn our attention to straight ducts with varying width, in particular the exponential horn. The exponential horn with duct walls given by $h(s) = (h_+(s) - h_-(s)) = h_0 e^{ms}$ and $h_-(s) = -h_+(s)$ is an attractive problem to solve, both for its real world applications and that it has an approximate analytical solution to the linear problem — the solution to Webster's horn equation, given by

$$p = e^{-ms/2} (Ae^{ins} + Be^{-ins}) \quad (5.4)$$

where $n^2 = k^2 - (m/2)^2$. The factor of $1/2$ multiplying m comes from working in 2D rather than 3D when comparing with the usual solutions to the horn equation. Solutions with $k < m/2 = k_h$ are evanescent, illustrating how the horn acts as a high pass filter. One can refer to appendix E for a proof of the equivalence of our method and Webster's horn equation in the linear limit with a plane wave approximation.

We consider an exponential horn terminated by an infinite straight duct of $h = 16h_0$ with sinusoidal pressure source with amplitude M at the throat of width $h = h_0$. The length of the horn is $4.5h_0$. This is similar to the horn studied by Pagneux *et al.* (1996), however they studied a 3D version. We have also increased the growth rate of the width to account for the factor of $m/2$ rather than m . The frequency is taken to be $k = 0.95k_e < k_h$, less than both the horn cutoff frequency k_h and the exit duct cutoff $k_e = \pi/(16h_0)$, so linearly we would expect solutions to largely decay, with a small amount of plane wave tunnelling.

Figure 5 shows plots of the pressure distributions inside the horn at two different times — when the source is at its peak in the throat and quarter of a cycle later (to illustrate how this peak exits the horn) — for various Mach numbers. Truncation was

taken at 20 spatial modes / 10 temporal modes. While these Mach numbers are somewhat exaggerated, they serve to illustrate the effect of nonlinearity more clearly. In particular, as one would expect, with a waveguide that grows in cross sectional width we require much higher Mach numbers to show a nonlinear effect compared to a uniform or shrinking duct due to the spreading of energy over a larger area. Putting this aside however, there are some points to observe:

Firstly, as noted by Pagneux et al, the approximation made by Webster’s Horn equation that wavefronts are flat is a very poor one — even for the linear case, but especially when nonlinear terms are taken into account, the curvature of the wavefront is very pronounced. Secondly, despite using straight uniform duct modes, figure 5 shows the boundary condition on the curved surface being satisfied to a good accuracy, owing to our careful treatment of the boundary conditions when projecting the modes. Finally, a greater proportion of energy is emitted at higher Mach numbers — as was predicted, the linear solution tends to a very low amplitude plane wave resulting from a small amount of tunnelling. With a finite amplitude sound wave, some of the energy is transferred into higher temporal harmonics which are not cut off by the high pass filter — this can be seen most clearly in figure 5(h) where the pressure peak emitted is roughly half the amplitude of the source, compared to much lower fractions in the other figures.

We illustrate this further in figure 6 where we plot the RMS pressure normalized by the Mach number along the centreline of the duct. We also plot the linear solution and the analytic solution to Webster’s horn equation as well. It is clearly seen that the RMS exit pressure as a proportion of the input pressure is higher in the nonlinear case. The analytic solution underestimates the amplitude inside the horn, but provides a reasonable estimation of the exit pressure for low and infinitesimal Mach number.

5.4. Uniform Curved Ducts

We now look at a uniform width duct with constant curvature. The duct we consider is that studied by Félix & Pagneux (2001) using the linear multimodal method (in appendix F we demonstrate that our method reduces to the linear multimodal method in the linear limit), and experimentally as well as with finite differences by Cabelli (1980). The duct consists of a single bend placed $2h$ downstream of a plane piston source of frequency $kh = 3$. The bend has a curvature $\kappa h = 8/5$ and arc length $s = 1.6375h$. The bend then joins an infinite straight outlet. Figure 7 shows the results. Truncation was taken at 10 spatial modes / 10 temporal modes.

It can be seen that by introducing a finite Mach number we obtain the characteristic “bunching” of high and low regions of pressure resulting from wave steepening and, eventually, at high enough Mach numbers — shock formation. It is noted that the shocks form and travel on the outside of the bend. Incoming high pressure is focussed to small regions of greater amplitude than that of the incident wave which then propagate around the outside of the bend. A question which naturally arises is whether this focussing effect (and subsequent increase in local pressure) due to the bend increases, decreases or keeps the same the shock formation distance given that the outside of the bend is a longer path to take. We will begin to address this in section 6.

5.5. Nonuniform Curved Ducts

Finally we examine a duct of both varying width and with curvature. The “elephant’s trunk” is an interesting example studied by Félix & Pagneux (2001) as there has been recent work by Gilbert *et al.* (2014) suggesting that nonlinear acoustics may give these animals their characteristic sound. Adapting the description from Félix & Pagneux (2001,

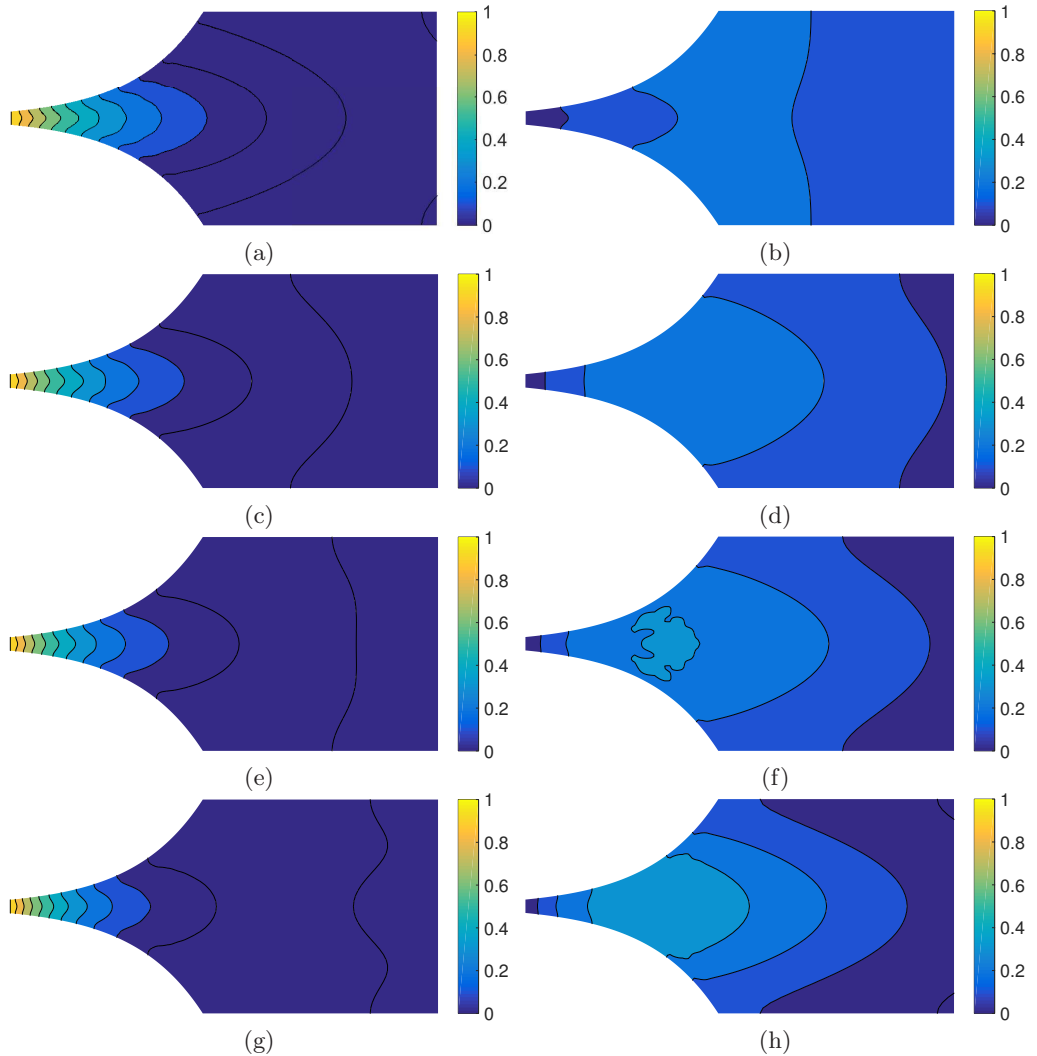


FIGURE 5. Plots of the pressure distributions inside the exponential horn. Plots are normalised to the source amplitude. (a) Linear, (b) Linear quarter of a cycle later, (c) $M = 0.10$, (d) $M = 0.10$ quarter of a cycle later, (e) $M = 0.15$, (f) $M = 0.15$ quarter of a cycle later, (g) $M = 0.20$, (h) $M = 0.20$ quarter of a cycle later

section V.B) to the present notation, the duct is given by ratio of upstream to downstream widths $h_u/h_d = 4$ with

$$h_+(s) = (h_d - h_u) \left(\frac{s}{s_f} \right)^3 - \frac{3}{2}(h_d - h_u) \left(\frac{s}{s_f} \right)^2 + \frac{h_u}{2}, \quad \text{and}, \quad h_- = -h_+ \quad (5.5)$$

Curvature is given by $\kappa h_u = 4/5$ and the total arc length is $s_f = 3.275h_u$. (Note that there is no suggestion here or by Félix & Pagneux (2001) that this shape is an accurate representation of an actual elephant's trunk.) We impose a plane piston source with $kh_u = 3$ at the source. Figure 8 shows the results. Truncation was taken at 10 spatial / 10 temporal modes.

Ducts of this kind (with decreasing width) give rise to issues not previously mentioned: cuton–cutoff transition. If we consider a uniform straight duct, the linear admittance

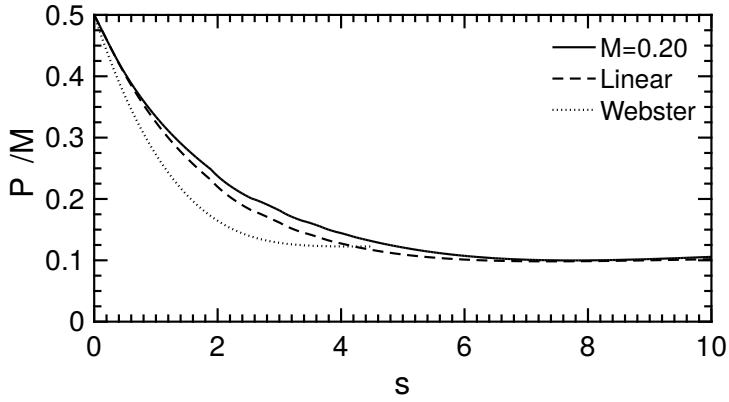


FIGURE 6. Normalised RMS of the pressure along the centreline of the duct. The horn exit is at $s = 4.5$

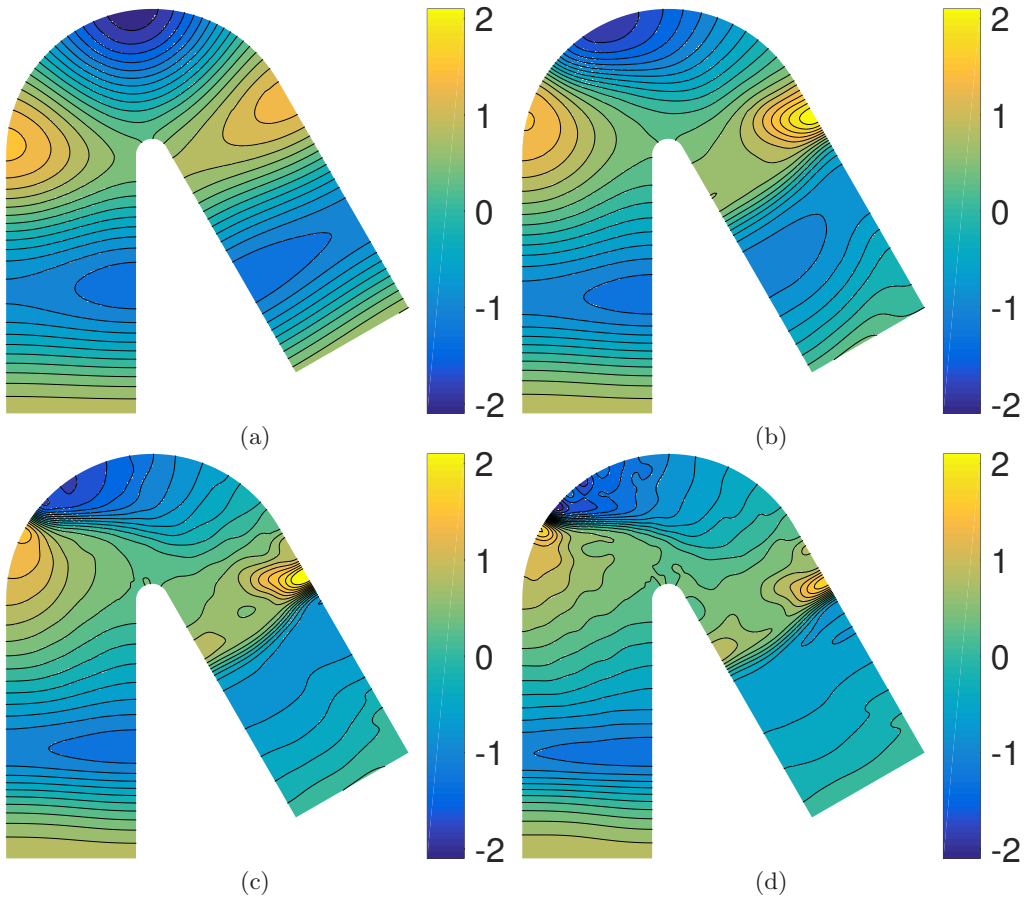


FIGURE 7. Plots of a uniform curved duct for various Mach numbers. Plots are normalised to the source amplitude. (a) Linear, (b) $M = 0.05$, (c) $M = 0.10$, (d) $M = 0.15$

equation can be solved for exactly and is given by

$$\mathbf{Y}_{pq}^a = \frac{k_p^a}{ak} \tanh(ik_p^a(s+c)) \delta_{pq} = \frac{ik_p^a}{ak} \tan(k_p^a(s+c)) \delta_{pq} \quad (5.6)$$

for some constant c where k_p^a is defined by (D 8). Downstream, our solution is given by the fixed point

$$\mathbf{Y}_{pq}^a = (\mathbf{Y}^+)^a_{pq} \equiv \frac{k_p^a}{ak} \delta_{pq} \quad (5.7)$$

If we consider a cut-off mode downstream so that $k_p^a(s) = ik^*$ for $s > s_0$ and real k^* , we perturb the duct width slightly upstream such that this mode is cut-on upstream ($k_p^a(s) \sim k^*$ for $s < s_0$), so that the admittance will have solution (for this particular p and a)

$$\mathbf{Y}_{pq}^a = \frac{ik^*}{ak} \tan(k^*(s-s_0) + \pi/4) \quad \text{for } s < s_0 \quad (5.8)$$

showing a finite distance blowup in the admittance.

Conversely, if we choose a duct of increasing width, with a mode such that $k_p^a = k^*$ for $s > s_0$ and $k_p^a \sim ik^*$ for $s < s_0$, we get

$$\mathbf{Y}_{pq}^a = -\frac{k^*}{ak} \tan(ik^*(s-s_0) - \pi/4) \quad \text{for } s < s_0 \quad (5.9)$$

and we do not get the blowup.

This mathematical difficulty was also previously noted by Pagneux *et al.* (1996, section II.C.2) in their method, although in a slightly different context. A way to overcome this is to introduce a small imaginary part to the wavenumber k (physically this could be thought of as another form of damping). This ensures we are acting our tan function on complex values and hence do not encounter singularities. The imaginary part of k can then be ignored when solving for the pressure. This procedure has little effect on the output, besides keeping the simulations stable. Comparing the linear elephant's trunk with or without the small imaginary part to k yields little difference (in this example, the finite time blowup only occurs in the nonlinear case as only the harmonics undergo cut-off/on, not the fundamental).

As one would expect with such a duct, the amplitude increases with the decreasing width causing more rapid shock formation and, as with the uniform duct, this shock propagates along the outside of the bend.

6. Comparisons Between Ducts

In the previous section we showed the effects of the introduction of nonlinearity into various different, previously studied ducts. We now consider the effect of the duct itself on the nonlinear sound propagation. To do so, we consider four different ducts all of the same length $L = 1.5\pi h$, with a sinusoidal planar pressure source at the entrance of frequency $kh = 3$ and Mach number given by $M = 2/(L\beta k)$ such that the shock formation distance (for a straight duct at least) is halfway through the duct. Each of the ducts is terminated by an infinite straight outlet. The four ducts are:

- A uniform straight duct
- A 180° circular bend
- An exponential horn with exit width $2h$
- A 180° circular horn with exit width $2h$

Thus we can separately compare the effects of curvature, varying width, and the combination.

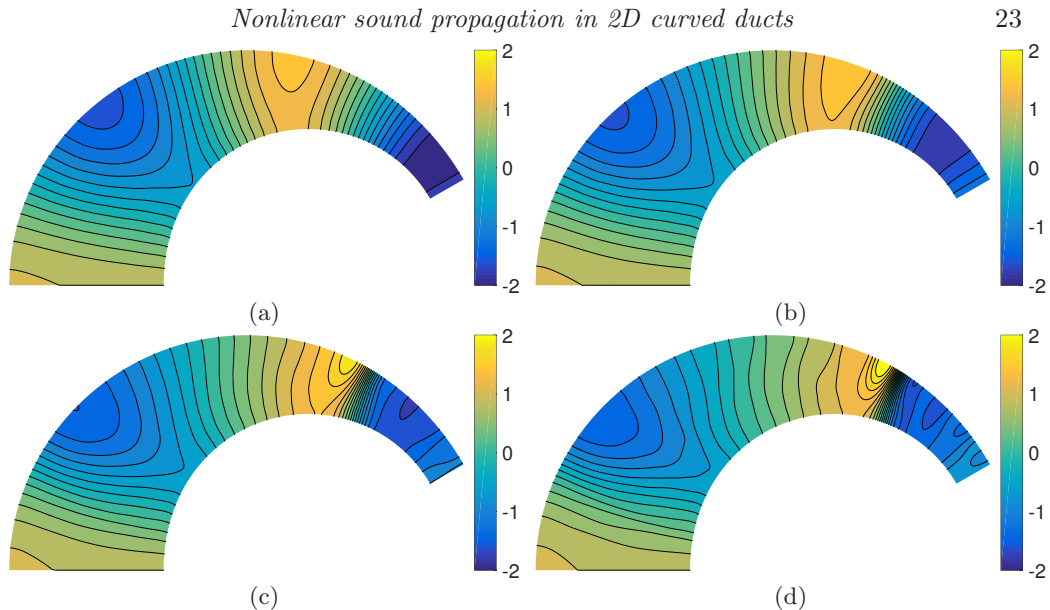


FIGURE 8. Plots of the elephant’s trunk for various Mach numbers. Plots are normalised to the source amplitude. (a) Linear, (b) $M = 0.05$, (c) $M = 0.10$, (d) $M = 0.15$

Figures 9, 10 and 11 compare the modal amplitudes throughout the ducts. As previously observed, the curved duct shows a strong harmonic enrichment on the outside of the duct bend at the cost of enrichment towards the centre and inside. Therefore it would seem that the “observability” of the bend in a duct system—i.e. whether one could detect if there is a bend upstream—is dependant on whether the ensuing duct can support propagation of higher spatial modes. For low frequencies or narrow ducts it would seem likely that this extra harmonic enrichment would be lost due to reflection, but for high frequencies one could expect highly enriched localised sound to propagate downstream of a bend.

For the horn we compare the pressure normalized to the square root of the duct width to account for the spreading of the waveform. The harmonic enrichment is indeed less than a straight duct, with more energy remaining in the fundamental. However, as noted before, there is the potential for more energy to escape through these nonlinear effects.

These two effects can be seen to combine when comparing the curved uniform duct and the curved horn. While the horn effect reduces enrichment for most points across the duct, the curvature focuses the sound at the outer edge such that it is of comparable amplitude to the uniform curve. As the exit width is larger for the horn, some of these more localised modes can propagate out.

To better examine the downstream effects of the varying duct shape we consider the power spectrum associated with each of the duct modes. We vary the input power of our plane wave source and find the output power of the duct for each of the spatial modes and temporal harmonics (see figure 12). For the planar modes the straight duct provides the most enrichment with the curved ducts providing significantly less. When one looks at the higher spatial modes however, one finds a similar degree of enrichment, particularly with the curved horn (which has fewer cut off modes). As an aside it is also interesting to note that modes which would traditionally be cut-off and transmit no power in a linear regime can now do so at sufficiently high Mach numbers (see P_1^1 for the uniform curved duct).

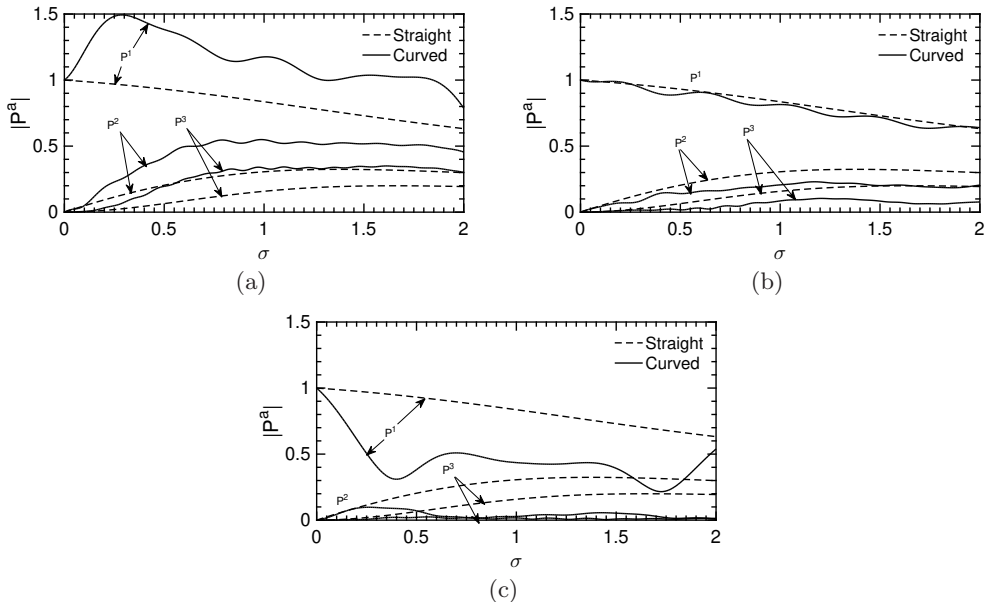


FIGURE 9. Comparing the modal amplitudes throughout the curved uniform duct along different paths to the straight uniform duct. $M = 2/(L\beta k)$. (a) The outside of the bend, (b) the centre of the bend, (c) the inside of the bend

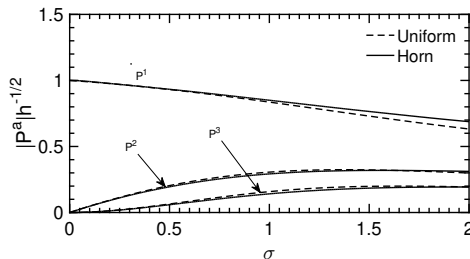


FIGURE 10. Comparing the modal amplitudes of the straight horn and straight uniform duct, for $M = 2/(L\beta k)$. Note that the amplitudes are normalized by $1/\sqrt{h}$ to remove the effect of the varying duct area.

7. Nonlinear Reflection

As we have previously noted at several points, nonlinearity can transfer energy to higher modes and allow them to propagate in to regions where a linear wave would not. We have also observed modes which would not traditionally carry energy under a linear regime now doing so. This suggests it is important to reformulate our notions of reflection coefficients and matrices to also take into account the amplitude of the sound waves we are dealing with. We begin with the characteristic admittance relation for forward and backward propagating modes

$$\mathbf{u}^\pm = \mathbf{Y}^\pm \mathbf{p}^\pm + \mathcal{Y}^\pm[\mathbf{p}^\pm, \mathbf{p}^\pm] \quad (7.1)$$

We now define a nonlinear reflection relation, relating forwards and backwards propagating pressure modes

$$\mathbf{p}^- = \mathbf{R}\mathbf{p}^+ + \mathcal{R}[\mathbf{p}^+, \mathbf{p}^+] \quad (7.2)$$

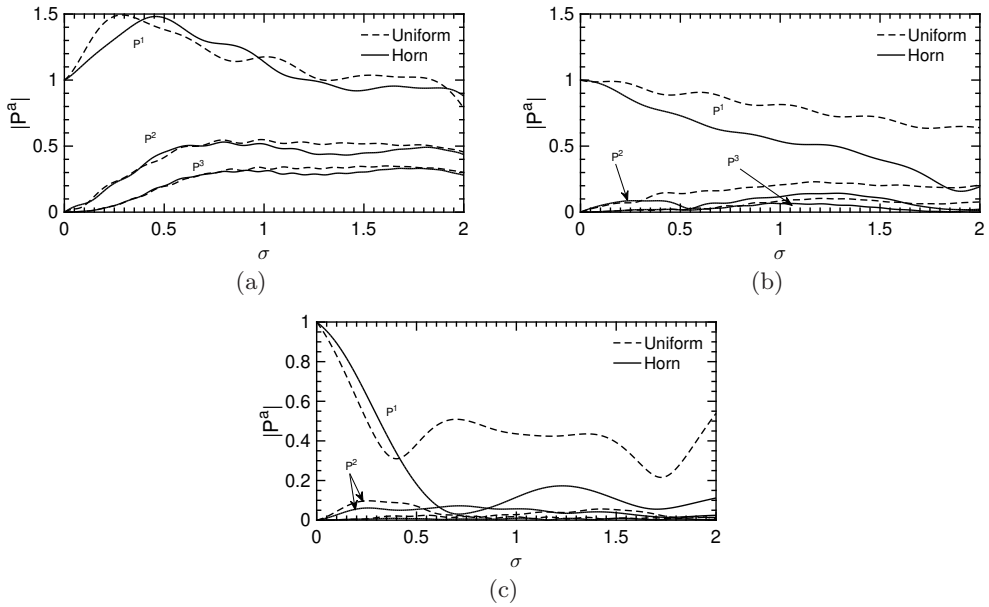


FIGURE 11. Comparing the modal amplitudes throughout the curved uniform duct to the curved horn along different paths. $M = 2/(L\beta k)$. (a) The outside of the bend, (b) the centre of the bend, (c) the inside of the bend

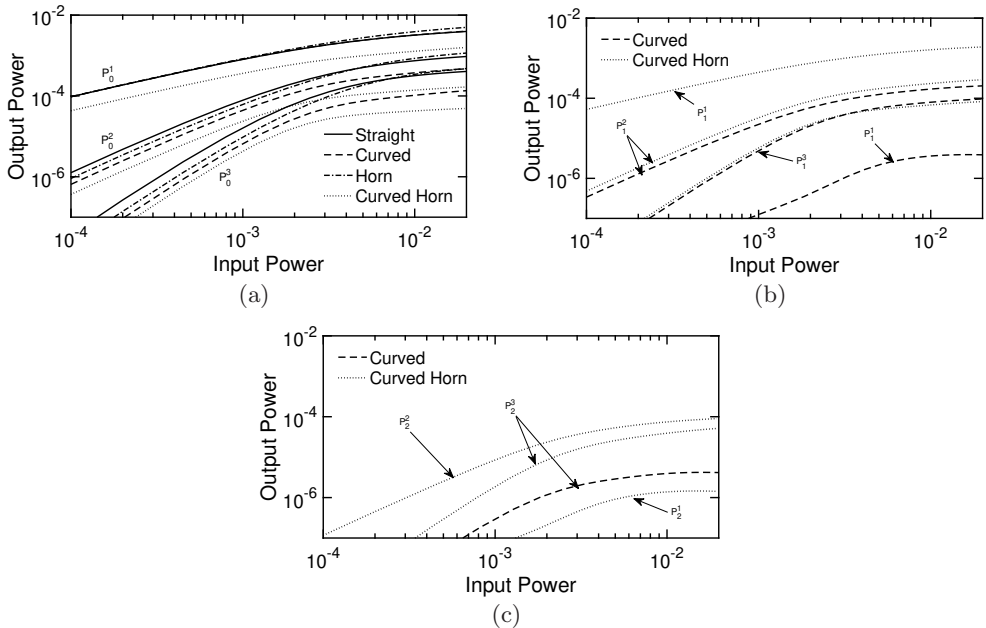


FIGURE 12. Comparing the power outputs of the different ducts. (a) The planar modes, (b) Mode 1, (c) Mode 2

where \mathbf{R} is the common reflection matrix encountered in the linear literature and \mathcal{R} is the new nonlinear reflectance, both of which vary throughout the duct. From the standard impedance relation we have

$$\mathbf{u} = \mathbf{u}^+ + \mathbf{u}^- = \mathbf{Y}\mathbf{p} + \mathcal{Y}[\mathbf{p}, \mathbf{p}] = \mathbf{Y}(\mathbf{p}^+ + \mathbf{p}^-) + \mathcal{Y}[\mathbf{p}^+ + \mathbf{p}^-, \mathbf{p}^+ + \mathbf{p}^-] \quad (7.3)$$

The \mathbf{u}^\pm can be expressed in terms of \mathbf{p}^\pm using (7.1) and, subsequently, the \mathbf{p}^- can be expressed in terms of \mathbf{p}^+ using the reflection relation (7.2) to get

$$\begin{aligned} \mathbf{Y}^+\mathbf{p}^+ + \mathcal{Y}^+[\mathbf{p}^+, \mathbf{p}^+] + \mathbf{Y}^-(\mathbf{R}\mathbf{p}^+ + \mathcal{R}[\mathbf{p}^+, \mathbf{p}^+]) + \mathcal{Y}^-[\mathbf{R}\mathbf{p}^+, \mathbf{R}\mathbf{p}^+] \\ = \mathbf{Y}(\mathbf{p}^+ + \mathbf{R}\mathbf{p}^+ + \mathcal{R}[\mathbf{p}^+, \mathbf{p}^+]) + \mathcal{Y}[\mathbf{p}^+ + \mathbf{R}\mathbf{p}^+, \mathbf{p}^+ + \mathbf{R}\mathbf{p}^+] \end{aligned} \quad (7.4)$$

As with formulating our impedance relations, orders of magnitude can then be taken to form two distinct equations, and the \mathbf{p}^+ can be cancelled off. From this we obtain the usual definition of the reflection matrix

$$\mathbf{R} = (\mathbf{Y} - \mathbf{Y}^-)^{-1}(\mathbf{Y}^+ - \mathbf{Y}) \quad (7.5)$$

and the new nonlinear reflectance

$$\mathcal{R} = (\mathbf{Y} - \mathbf{Y}^-)^{-1}(\mathcal{Y}^+ + \mathcal{Y}^-[\mathbf{R}, \mathbf{R}] - \mathcal{Y}[\mathbf{I} + \mathbf{R}, \mathbf{I} + \mathbf{R}]) \quad (7.6)$$

We can use these to obtain the reflective properties of a duct. If we have an incident wave \mathbf{p}^+ , we can calculate the power associated with such a wave

$$W^+ = \text{Re}(\mathbf{p}^+ \cdot \overline{\mathbf{u}^+}) = \text{Re}(\mathbf{p}^+ \overline{\mathbf{Y}^+\mathbf{p}^+} + \mathbf{p}^+ \overline{\mathcal{Y}^+[\mathbf{p}^+, \mathbf{p}^+]}) \quad (7.7)$$

The total pressure is given by

$$\mathbf{p} = (\mathbf{I} + \mathbf{R})\mathbf{p}^+ + \mathcal{R}[\mathbf{p}^+, \mathbf{p}^+] \quad (7.8)$$

Therefore the total power is

$$W = \text{Re}(\mathbf{p} \overline{\mathbf{Y}\mathbf{p}} + \mathbf{p} \overline{\mathcal{Y}[\mathbf{p}, \mathbf{p}]}) \quad (7.9)$$

Unlike in the linear case the total energy flux is not a sum of W^+ and the analogous W^- as there are nonlinear interactions. Instead we take our amplitude reflection modulus to be

$$R = \sqrt{\frac{W - W^+}{W^+}} \quad (7.10)$$

Figure 13 shows how the amount of energy reflected in the depends both on frequency of the signal and the amplitude for the uniform curved duct studied in section 5.4. Low frequencies have a much lower dependence on amplitude than higher frequencies and larger amplitudes have a much more sensitive dependence on frequency, with interesting new resonances arising. Also plotted are the experimental results of Cabelli (1980). Nonlinearity may account for the discrepancy between the experimental results and the linear multimodal method, though as no amplitude was stated one cannot be certain.

Figure 14 is a similar plot for the elephant's trunk described in section 5.5. In this case the effects of nonlinearity have little effect on the reflection coefficient—presumably due to the decreasing width not only reflecting many of the fundamental duct modes, but also many of the modes of the temporal harmonics as well. Thus, even though the sound is enriched, it is not enriched enough to propagate down the narrow exit.

Figure 15 illustrates the opposite effect for the horn described in section 5.3. Due to the increasing width, many of the modes of the harmonics produced by spectral enrichment can propagate, whereas the fundamental modes cannot. Therefore, as noted earlier, more

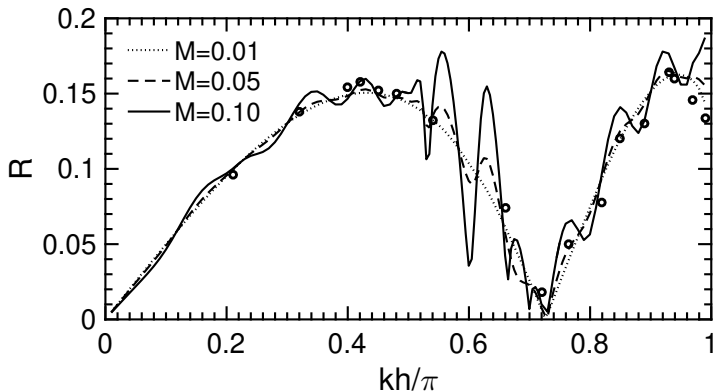


FIGURE 13. Modulus of the reflection coefficient at various amplitudes for the uniform curved duct described in section 5.4. The 'o' are the experimental results of Cabelli (1980).

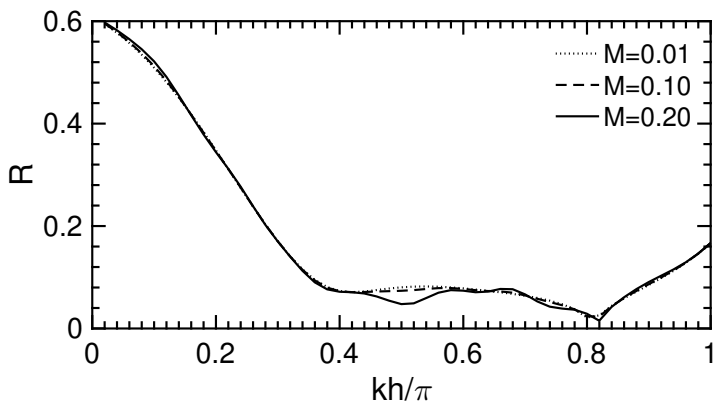


FIGURE 14. Modulus of the reflection coefficient at various amplitudes for the elephant's trunk described in section 5.5

energy can escape the horn as the enrichment increases. This is confirmed by this graph with higher Mach numbers reducing the reflection coefficient.

8. Conclusion

A multimodal method for the calculation of weakly nonlinear sound propagation in bends of general curvature and width has been presented. The method directly extends the linear curved-duct analysis of Félix & Pagneux (2001) into the weakly nonlinear regime, and allows for a more general arbitrarily curved duct geometry, while reducing to their method in the infinitesimal amplitude limit. The method also extends the nonlinear straight-duct analysis of Fernando *et al.* (2011) to allow for curved ducts of varying width. The method also reproduces the classical nonlinear acoustic phenomena such as wave steepening and shock formation, matching the analytical results for 1D.

The method was applied to ducts previously studied in the linear literature, where it was shown that wave steepening can play an important role in the shape of the waveform propagating in complex geometry. A particularly important result is that

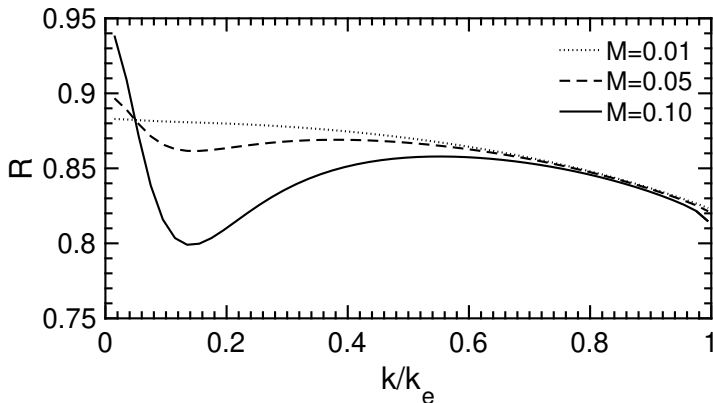


FIGURE 15. Modulus of the reflection coefficient at various amplitudes for the elephant’s trunk described in section 5.3

nonlinear harmonic enrichment can lead to a greater transmission of sound out of an acoustic horn.

Different geometries were compared to gain an insight into how the duct shape can effect the acoustic properties in the nonlinear regime. A greater degree of wave steeping was observed on the outside of a bend when compared to a straight duct due to a greater localization of energy. How this affects the sound radiated remains an open question, and is presently being worked on by the authors.

Two fundamental extensions to the existing linear notation have been proposed in the course of this work: the extension of linear admittance $\mathbf{u} = \mathbf{Y}\mathbf{p}$ to weakly nonlinear (2.36), and the extension of linear reflectance $\mathbf{p}^- = \mathbf{R}\mathbf{p}^+$ to weakly nonlinear (7.2). The admittance (or, equivalently, the impedance) is often used as either an input or output boundary condition, dictating how much sound is allowed in or let out of a duct, and the nonlinear extension includes the effects of the wave amplitude at the boundary. The reflectance is often used as an internal boundary condition, dictating how much sound at a boundary is reflected back into the duct, and the extension to the notion of reflectance takes into account the amplitude of the incident wave. These extensions could have important consequences for the resonances in musical instruments where, for example, one may be able to calculate the change in pitch of a brass instrument with the playing volume. The nonlinear admittance could also be used to concatenate different shaped ducts to form a lumped-element model, extending linear lumped-element models to weak nonlinearity.

The numerical implementation of the proposed method described in section 4, while practical on modest computational hardware, can none-the-less be expensive in terms of computational time and memory requirements. Two possible extensions could lead to reduced computational requirements. The first is to use the idea of Bi (2008) to use an overdetermined basis of functions for the spatial modal expansion, including a straight duct mode with a Dirichlet boundary condition in addition to the basis of straight duct modes with Neumann boundary conditions, in order to more easily satisfy the boundary conditions and lead to faster convergence; for their case, Bi (2008) showed this accelerated convergence from $O(N^{-3})$ to $O(N^{-5})$, where N is the number of modes included. Such an improvement in convergence rate could also be expected here. Secondly, memory requirements could be reduced at the cost of a slight increase in computational cost by checkpointing, in a similar way to calculations in adjoint looping. This would involve,

when solving (2.41a) and (2.41b) for the linear and nonlinear admittance, only storing the admittances at a few axial locations rather than at all calculated locations along the duct, with a significant memory saving. Subsequently, when the admittances are needed to solve (2.43) for the pressure within the duct, the admittances would be re-calculated by re-solving (2.41a) and (2.41b) from the nearest stored values of the admittances. Whether this tradeoff between extra computational expense and reduced memory requirements is advantageous would be parameter dependent.

The examples given in this paper are either taken from existing literature for comparative purposes, or are designed purely to be taxing test cases which demonstrate a range of interesting behaviours. Whilst one promising possible application of this work is in the analysis of brass instruments (e.g. Gilbert *et al.* 2008; Rendón *et al.* 2010), it is not clear whether the features seen in the examples given here are indicative of behaviour in actual brass instruments, and further study would be needed. In particular, the exponential horn is not particularly representative of brass instrument bells, for which the degree of flaring is an important feature of the instrument's design; such features could be investigated using the method presented here, although to accurately model an open duct end and propagation to the far field the weakly nonlinear admittance at an open duct end would need to be derived, accounting for weakly nonlinear effects in the near field outside the duct.

Work is also currently under way extending this method to fully three dimensional ducts (including those with torsion) to which a richer degree of phenomena are possible.

JPM gratefully acknowledges the support of an EPSRC Doctoral Training Grant.

EJB gratefully acknowledges the support of a Royal Society University Research Fellowship (UF150695).

Appendix A. Modes of Zero Frequency

In this appendix we justify ignoring the modes of zero frequency. From (2.14a), setting $a = 0$ we obtain

$$\nabla \cdot \mathbf{U}^0 = \sum_{b=-\infty}^{\infty} (-ibkP^{-b}P^b - ibkU^{-b}U^b - ibkV^{-b}V^b) \quad (\text{A } 1)$$

where we have substituted for the differential terms on the RHS. It can clearly be seen that upon summation, the RHS vanishes and we are left with the classical incompressibility condition $\nabla \cdot \mathbf{U}^0 = 0$. As such, the modes U^0 are decoupled from the acoustic modes and we do not have acoustic streaming. As we are not imposing any mean flow in the duct and none is induced by the acoustic phenomena, we ignore the modes U^0 .

By taking (2.18a) and (2.18c), and the linear relationship between P^a and U^a given by (2.29), it can be seen that (2.14b) reduces to

$$\nabla P^0 = - \sum_{b=-\infty}^{\infty} \nabla \left(\frac{1}{2} U^{-b} U^b - \frac{1}{2} P^{-b} P^b \right) \quad (\text{A } 2)$$

for $a = 0$. Therefore we have

$$P^0 = - \langle \mathcal{L} \rangle \quad (\text{A } 3)$$

where $\mathcal{L} = \hat{\mathbf{u}}^2/2 - \hat{p}^2/2$ is the Lagrangian density of energy and $\langle \rangle$ denotes time average. As this is an order of magnitude smaller than the other pressure terms (noting that while we have retained terms of $O(M^2)$ in our equations, their effect is cumulative whereas the local sound pressure we are interested in is $O(M)$), it does not affect our governing

equations. It can therefore be ignored in calculations and makes little difference to the final pressure profile.

Appendix B. Analytic Expressions for the Ψ Matrices

$$\Psi_{pq} = \delta_{pq}, \quad (\text{B } 1a)$$

$$\Psi_{[p]q} = \begin{cases} C_p C_q \frac{p^2((-1)^{p+q}-1)}{p^2-q^2} & p \neq q \\ 0 & p = q, \end{cases} \quad (\text{B } 1b)$$

$$\Psi_{pq}[r] = \begin{cases} C_p C_q \frac{(p^2+q^2)(h_+-h_-)^2((-1)^{p+q}-1)}{\pi^2(p^2-q^2)^2} & p \neq q \\ (h_+ + h_-)/2 & p = q, \end{cases} \quad (\text{B } 1c)$$

$$\Psi_{[p]q}[r] = \begin{cases} C_p C_q \frac{p^2(h_+(-1)^{p+q}-h_-)}{p^2-q^2} & p \neq q \\ 1/2 & p = q, \quad p \neq 0 \\ 0 & p = 0, \end{cases} \quad (\text{B } 1d)$$

$$\Psi_{\{p\}q} = \begin{cases} -\left(\frac{h'_+-h'_-}{h_+-h_-}\right)(1-\delta_{p0}/2) & p = q \\ -C_p C_q((-1)^{p+q}h'_+ - h'_-)\frac{p^2}{p^2-q^2} & p \neq q, \end{cases} \quad (\text{B } 1e)$$

$$\Psi_{pqr} = C_p C_q C_r \frac{(h_+ - h_-)}{4} (\delta_{p,q+r} + \delta_{p,|q-r|} + \delta_{p,0}\delta_{q,r} + \delta_{p,0}\delta_{q,0}\delta_{r,0}), \quad (\text{B } 1f)$$

$$\Psi_{[p]qr} = \begin{cases} C_p C_q C_r \frac{p^2((-1)^{p+q+r}-1)(p^2-q^2-r^2)}{(p+q+r)(p+q-r)(p-q+r)(p-q-r)} & p \neq |q+r|, \quad p \neq |q-r| \\ 0 & \text{else,} \end{cases} \quad (\text{B } 1g)$$

$$\Psi_{pqr}[r] = \begin{cases} C_p C_q C_r((-1)^{p+q+r}-1)\frac{(h_+-h_-)^2}{4\pi^2} \left(\dots \right. \\ \left. \frac{1}{(p+q+r)^2} + \frac{1}{(p-q+r)^2} + \frac{1}{(p+q-r)^2} + \frac{1}{(p-q-r)^2} \right) & p \neq |q+r|, \quad (\text{B } 1h) \\ & p \neq |q-r| \\ 0 & \text{else} \end{cases}$$

$$\Psi_{[p]qr}[r] = \begin{cases} C_p C_q C_r \frac{(h_+(-1)^{p+q+r}-h_-)p^2(p^2-q^2-r^2)}{(p+q+r)(p+q-r)(p-q+r)(p-q-r)} & p \notin \{|q+r|, |q-r|\}, \\ \frac{C_p C_q C_r}{8}(h_+-h_-)p \left(\frac{1}{q+r} + \frac{1}{q} + \frac{1}{r} \right) & p = q+r, \\ \frac{C_p C_q C_r}{8}(h_+-h_-)p \left(\frac{1}{q} - \frac{1}{r} + \frac{1}{q-r} \right) & p = q-r, \\ \frac{C_p C_q C_r}{8}(h_+-h_-)p \left(\frac{1}{r} - \frac{1}{r} + \frac{1}{r-q} \right) & p = r-q, \\ \frac{C_p C_q C_r}{4}(h_+-h_-) & p = q, r = 0 \\ \frac{C_p C_q C_r}{4}(h_+-h_-) & p = r, q = 0 \\ 0 & \text{else} \end{cases} \quad (\text{B } 1i)$$

$$\Psi_{\{p\}qr} = -\frac{(h'_+-h'_-)}{2(h_+-h_-)}\Psi_{pqr} + \frac{h_-h'_+-h_+h'_-}{h_+-h_-}\Psi_{[p]qr} - \frac{h'_+-h'_-}{h_+-h_-}\Psi_{[p]qr}[r], \quad (\text{B } 1j)$$

$$\frac{\partial}{\partial s}(\Psi_{pqr}) = -\frac{1}{2} \left(\frac{h'_+-h'_-}{h_+-h_-} \right) \Psi_{pqr}. \quad (\text{B } 1k)$$

Appendix C. Equivalence to the Fubini and Sawtooth Solutions

The case of nonlinear sound propagation in 1D has been much studied. The Fubini solution (Fubini 1935), which is valid up to the point of shock formation, gives the harmonic amplitudes of pressure for a sinusoidal pressure source propagating in 1D. The modal amplitudes, B_a are given by

$$B_a = \frac{2}{a\sigma} J_a(a\sigma) \quad (\text{C1})$$

In our notation, this corresponds to a solution

$$P_0^a = iM\sqrt{h_+ - h_-} \frac{1}{a\sigma} J_a(a\sigma) e^{iak s} \quad (\text{C2})$$

Where the factor of i in the front ensures the solution satisfies $P^{-a} = (P^a)^*$.

In 1D, (2.43) can be heavily simplified. Both the linear and nonlinear parts of the admittance are given by their characteristic forms for a straight duct

$$\mathbf{Y}^a = 1, \quad \mathcal{Y}^{ab} = -\frac{\beta}{2\sqrt{h_+ - h_-}} \quad (\text{C3})$$

Thus, (2.43) reduces to

$$\frac{d}{ds} P^a = iakP^a - \sum_{b=-\infty}^{\infty} \left(\frac{iak\beta}{2\sqrt{h_+ - h_-}} P^{a-b} P^b + \frac{i(a-2b)k}{\sqrt{h_+ - h_-}} P^{a-b} P^b \right) \quad (\text{C4})$$

The third term in this equation—corresponding to $\mathcal{C}[\mathbf{Y}\mathbf{p}, \mathbf{p}]$ in (2.43)—may be written

$$\frac{ik}{\sqrt{h_+ - h_-}} ((a-b) - b) P^{a-b} P^b \quad (\text{C5})$$

and hence vanishes on summation. This happens because the term \mathcal{C} corresponds to the Lagrangian density of energy, which vanishes for plane waves (Hamilton & Blackstock 1990). We are therefore left with

$$\frac{d}{ds} P^a = iakP^a - \frac{iak\beta}{2\sqrt{h_+ - h_-}} P^{a-b} P^b \quad (\text{C6})$$

Upon substituting (C2) into (C6) we are left with

$$\frac{1}{\sigma} J'_a(a\sigma) - \frac{1}{a\sigma^2} J_a(a\sigma) = \sum_{b=-\infty}^{\infty} \frac{a}{2(a-b)b} J_{a-b}((a-b)\sigma) J_b(b\sigma) \quad (\text{C7})$$

Based upon numerical evaluations, this appears to be a Bessel identity valid for $\sigma < 1$. Under this assumption the Fubini solution is a solution to our equations up to shock formation.

For $\sigma > 3$ the waveform assumes a sawtooth shape (Blackstock 1966). The solution in this region (corresponding to the Fay (1931) solution in the lossless limit) is given by

$$P^a = \frac{iM\sqrt{h_+ - h_-}}{(1+\sigma)a} e^{iak s} \quad (\text{C8})$$

In (C6) we get,

$$-\frac{1}{a} \frac{i\beta k M^2 \sqrt{h_+ - h_-}}{(1+\sigma)^2} e^{iak s} = \sum_{b=-\infty}^{\infty} \frac{a}{2(a-b)b} \frac{i\beta k M^2 \sqrt{h_+ - h_-}}{(1+\sigma)^2} e^{iak s} \quad (\text{C9})$$

The RHS factor can be split into partial fractions

$$\begin{aligned}
\sum_{b=-\infty}^{\infty} \frac{a}{2(a-b)b} &= \frac{1}{2} \sum_{b=-\infty}^{\infty} \left(\frac{1}{a-b} + \frac{1}{b} \right) \\
&= \frac{1}{2} \sum_{b=1}^{a-1} \left(\frac{1}{a-b} + \frac{1}{b} \right) + \frac{1}{2} \sum_{b=1}^{\infty} \left(\frac{1}{a+b} - \frac{1}{b} \right) + \frac{1}{2} \sum_{b=a+1}^{\infty} \left(-\frac{1}{b-a} + \frac{1}{b} \right) \\
&= \frac{1}{2} \sum_{b=1}^{a-1} \left(\frac{1}{a-b} + \frac{1}{b} \right) + \sum_{b=1}^{\infty} \left(\frac{1}{a+b} - \frac{1}{b} \right) \\
&= \frac{1}{2} \sum_{b=1}^{a-1} \left(\frac{1}{a-b} - \frac{1}{b} \right) - \frac{1}{a} \\
&= -\frac{1}{a}
\end{aligned} \tag{C 10}$$

Thus, the sawtooth wave is a solution to the equation.

Appendix D. Uniform Straight Ducts

Now we consider a 2D duct with no curvature or varying width. This was dealt with by Fernando *et al.* (2011). We will now partly demonstrate the equivalence of our method and theirs. We first simplify some of the Ψ matrix products in our definitions of the matrices and tensors.

$$\Psi_{[p]s}\Psi_{s[q]} = \sum_{\substack{s=0 \\ s \neq p,q}}^{\infty} C_p C_q \frac{2 - \delta_{s0}}{h_+ - h_-} p^2 q^2 \frac{\left((-1)^{p+q} - (-1)^{p+s} - (-1)^{q+s} + 1 \right)}{(p^2 - s^2)(q^2 - s^2)} \tag{D 1}$$

For $p = q$ this becomes

$$\Psi_{[p]s}\Psi_{s[p]} = \sum_{\substack{s=0 \\ s \neq p}} \frac{2 - \delta_{s0}}{(h_+ - h_-)^2} (1 - (-1)^{p+s}) \left(\frac{p^2}{(s-p)^2} + \frac{p^2}{(p+s)^2} - \frac{p}{s-p} + \frac{p}{s+p} \right) \tag{D 2}$$

and the he terms with numerator linear in p cancel upon summation. The terms with numerator quadratic in p correspond to the sum $\sum_{s=\text{odd}} \frac{8p^2}{s^2} = p^2 \pi^2$ after rearrangement. For $p \neq q$

$$\begin{aligned}
\Psi_{[p]s}\Psi_{s[q]} &= \sum_{\substack{s=0 \\ s \neq p,q}}^{\infty} C_p C_q \frac{2 - \delta_{s0}}{h_+ - h_-} \left((-1)^{p+q} - (-1)^{p+s} - (-1)^{q+s} + 1 \right) \\
&\quad \times \left(\frac{p^2 q}{2(p-q)(p+q)(q+s)} - \frac{p^2 q}{2(p-q)(p+q)(s-q)} \right. \\
&\quad \left. + \frac{pq^2}{2(p-q)(p+q)(s-p)} - \frac{pq^2}{2(p-q)(p+q)(p+s)} \right) \tag{D 3}
\end{aligned}$$

and it can be seen that the pairs of partial fractions cancel out upon summation. Hence we are left with

$$\Psi_{[p]s}\Psi_{s[q]} = \delta_{pq} \frac{p^2 \pi^2}{(h_+ - h_-)^2} = \delta_{pq} \eta_p^2 \tag{D 4}$$

Therefore, in a straight duct we have

$$\mathbf{N}_{pq}^a = iak\delta_{pq}, \quad \mathbf{M}_{pq}^a = \frac{1}{iak}(k_p^a)^2\delta_{pq} \quad (\text{D } 5)$$

The matrix multiplications defining the tensors can also be simplified, which is made easier by the index notation used here. For example, $\Psi_{[p]s}\Psi_{sqt}\Psi_{t[r]} = \Psi_{[p]qt}\Psi_{t[r]} = \Psi_{[p]q[r]}$. We also have $\Psi_{[p]s}\Psi_{[s]qr} = -\eta_p^2\Psi_{pqr}$ and $\Psi_{[p]q[r]} + \Psi_{[p][q]r} = \eta_p^2\Psi_{p[q][r]}$. The tensors simplify to

$$\begin{aligned} \mathcal{A}_{pqr}^{ab} &= -ibk\Psi_{pqr} + \frac{1}{2iak}\eta_p^2\Psi_{pqr} \\ &\sim \frac{1}{2iak}(a^2k^2 + \eta_p^2)\Psi_{pqr}, \end{aligned} \quad (\text{D } 6a)$$

$$\begin{aligned} \mathcal{B}_{pqr}^{ab} &= -(ibk + iak\frac{B}{2A})\Psi_{pqr} - \frac{1}{i(a-b)k}\Psi_{p[q][r]} \\ &\quad - \frac{1}{2k^2(a-b)b}\frac{\eta_p^2}{iak}\Psi_{p[q][r]} - \frac{1}{iak}\Psi_{[p]q[r]} \\ &\sim -iak\frac{B}{2A}\Psi_{pqr} - \frac{iak}{2}\Psi_{pqr} - \frac{a^2k^2}{2iab(b-a)k^3}\Psi_{p[q][r]} \\ &\quad - \frac{\eta_p^2}{2iab(a-b)k^3}\Psi_{p[q][r]} - \frac{\eta_p^2}{2iak}\Psi_{p[q][r]}, \end{aligned} \quad (\text{D } 6b)$$

$$\mathcal{C}_{pqr}^{ab} = iak\Psi_{pqr} + \frac{1}{ibk}\Psi_{[p]q[r]} + \frac{2(k_r^b)^2}{ibk}\Psi_{pqr} \quad (\text{D } 6c)$$

where the ' \sim ' denotes an equivalence relation between two tensors that, while not equal, are equivalent under summation. Because of this property it can be seen that the expressions for the tensors relating second order quantities are not unique, but do form an equivalence class under summation. Here we have expressed \mathcal{A} and \mathcal{B} in a form symmetric on interchange of $b \leftrightarrow (a-b)$ with $q \leftrightarrow r$. Having this property is sufficient to uniquely define the second order quantities.

The equation used by Fernando *et al.* (2011) is for the velocity potential $\hat{\mathbf{u}} = \nabla\hat{\phi}$. The velocity potential is expanded about the basis of modes, with the modal amplitudes A_p^a given by

$$\phi_p^a = A_p^a(s)e^{ik_p^a s} \quad (\text{D } 7)$$

where $A_p^a(s)$ is assumed to be $\mathcal{O}(M)$ with $\mathcal{O}(M^2)$ derivatives. The factor

$$k_p^a = \begin{cases} (a^2k^2 - \eta_p^2)^{1/2} & ak > \eta_p, \quad a > 0 \\ -(a^2k^2 - \eta_p^2)^{1/2} & ak > \eta_p, \quad a < 0 \\ i(\eta_p^2 - a^2k^2)^{1/2} & ak < \eta_p \end{cases} \quad (\text{D } 8)$$

corresponds to the transverse wavenumber for each mode.

Note that while it may be more natural to work with the velocity potential (for example a second order wave equation, the Kuznetsov equation (Kuznetsov 1971), can be formed from just this variable), there is the implicit assumption of zero vorticity when using this variable — something which cannot be assumed a priori for a curved duct.

In terms of the velocity potential, the pressure is given by

$$\hat{p} = -\frac{1}{c_0}\frac{\partial\hat{\phi}}{\partial t} - \frac{1}{2}\left((\nabla\hat{\phi})^2 - \frac{1}{c_0^2}\left(\frac{\partial\hat{\phi}}{\partial t}\right)^2\right) \quad (\text{D } 9)$$

corresponding to modal amplitudes given by

$$P_p^a = iakA_p^a e^{ik_p^a s} + \frac{1}{2} \left(k_q^{a-b} k_r^b \Psi_{pqr} - \Psi_{p[q][r]} - (a-b)bk^2 \Psi_{pqr} \right) A_q^{a-b} A_r^b e^{i(k_q^{a-b} + k_r^b)s} \quad (\text{D } 10)$$

In order to completely prove the equivalence of our method with that of Fernando *et al.* (2011), one would need to derive (D 10) from a nonlinear impedance relationship analogous to (2.36). Because of the large class of equivalent tensors relating second order quantities this has proved difficult so far.

The expression for the velocity modes is

$$U_p^a = ((A_p^a)' + ik_p^a A_p^a) e^{ik_p^a s} \quad (\text{D } 11)$$

We substitute these expressions into (2.32a) (with the above straight duct simplifications), and, after cancellation and neglecting the second derivative of A (for the second derivative is $O(M^3)$) we obtain

$$2k_p^a (A_p^a)' e^{ik_p^a s} = ak \left(k_q^{a-b} k_r^b \Psi_{pqr} - \Psi_{p[q][r]} + k^2 (a-b) b \frac{B}{2A} \Psi_{pqr} \right) A_q^{a-b} A_r^b e^{i(k_q^{a-b} + k_r^b)s} \quad (\text{D } 12)$$

This is the equation presented by Fernando *et al.* (2011) (in dimensionless variables with normalized modes). Solving this equation has some disadvantages over our method. Firstly, this method can only be used for forward propagating waves. With a suitable choice of admittance one can solve for the nonlinear interaction of both forward and backward propagating waves together. Secondly, for numerical stability, one must discard evanescent modes from the calculation because of the problems associated with defining an amplitude for an exponentially small mode. In our method this is not necessary — indeed, as shown by Félix & Pagneux (2001), the evanescent modes are important when one considers a duct with curvature.

As stated previously, this is not a complete proof of equivalence—one can instead refer to section 5.2 for a numerical verification.

Appendix E. Linear Acoustics in a Non Uniform Straight Duct

If we ignore the quadratic terms and terms corresponding to curvature, our equations reduce to

$$U_p^{a'} + \frac{1}{iak} (k_p^a)^2 P_p^a - \Psi_{\{p\}q} U_q^a = 0 \quad (\text{E } 1a)$$

$$P_p^{a'} - iak U_p^a + \Psi_{p\{q\}} U_q^a = 0 \quad (\text{E } 1b)$$

These are the analogous 2D matrixial horn equations derived by Pagneux *et al.* (1996). As with their work we can consider taking only the planar modes in which case the equations become

$$U_0^{a'} - iak P_0^a + \frac{(h'_+ - h'_-)}{2(h_+ - h_-)} U_0^a = 0 \quad (\text{E } 2a)$$

$$P_0^{a'} - iak U_0^a - \frac{(h'_+ - h'_-)}{2(h_+ - h_-)} P_0^a = 0 \quad (\text{E } 2b)$$

Using $P^a = \frac{1}{\sqrt{h_+ - h_-}} P_0^a$ we find that

$$\frac{1}{h_+ - h_-} \left((h_+ - h_-) (P^a)' \right)' + a^2 k^2 P^a = 0 \quad (\text{E } 3)$$

which is Webster's horn equation in two dimensions (Webster 1919).

Appendix F. Linear Acoustics in a Curved Duct

In this section, we demonstrate the equivalence of our method with the multimodal method of Félix & Pagneux (2001) in the limit of infinitesimal Mach number. Ignoring quadratic terms yields

$$U_p^{a'} - (\text{iak}\Psi_{pq}[1 - \kappa r] + \frac{1}{\text{iak}}\Psi_{[p]s}[1 - \kappa r]\Psi_{s[q]})P_q^a - \Psi_{\{p\}q}U_q^a = 0 \quad (\text{F } 1a)$$

$$P_p^{a'} - \text{iak}\Psi_{pq}[1 - \kappa r]U_q^a + \Psi_{\{p\}q}P_q^a = 0 \quad (\text{F } 1b)$$

We have already shown in section D that $\Psi_{[p]s}\Psi_{s[q]} = \eta_p^2\delta_{pq}$. It can also be shown that $\Psi_{[p]s}[r]\Psi_{s[q]} = \eta_p^2\Psi_{pq}[r] - \Psi_{[p]q}$. Equation (F 1a) thus becomes

$$U_p^{a'} + \frac{1}{\text{iak}}\left((a^2k^2 - \eta_p^2)\Psi_{pq}[1 - \kappa r] - \kappa\Psi_{[p]q}\right)P_q^a - \Psi_{\{p\}q}U_q^a = 0 \quad (\text{F } 2)$$

If we now transform into polar coordinates to describe the rigid bend, with \tilde{r} the distance from the polar origin and $\tilde{\theta}$ the angle. Following the notation of Félix & Pagneux (2001) we let R_1 be the distance from the polar origin to the inside of the bend, with widths given by $h_+ = -h_- = h/2$. We therefore have the following transformation between our coordinate system and theirs

$$\frac{1}{\kappa} = -(R_1 + h/2), \quad \tilde{\theta} = -s\kappa, \quad \tilde{r} = r + h/2 + R_1. \quad (\text{F } 3)$$

The factor $(1 - \kappa r) \mapsto -\kappa\tilde{r}$ and $\frac{d}{ds} \mapsto -\kappa\frac{d}{d\tilde{\theta}}$. The equations therefore become

$$\frac{d}{d\tilde{\theta}}U_p^a = -\frac{1}{\text{iak}}\left((a^2k^2 - \eta_p^2)\Psi_{pq}[\tilde{r}] + \Psi_{[p]q}\right)P_q^a + \Psi_{\{p\}q}U_q^a \quad (\text{F } 4a)$$

$$\frac{d}{d\tilde{\theta}}P_p^a = \text{iak}\Psi_{pq}[\tilde{r}]U_q^a - \Psi_{\{p\}q}P_q^a \quad (\text{F } 4b)$$

These are the equations presented by Félix & Pagneux (2001) (noting sign differences due to the opposite sign of the temporal exponential factor). We are therefore justified in expanding the transverse velocity V^a into modal components and eliminating it at the end of the derivation, as doing so produces the equivalent results to eliminating V^a before we expand about our modal basis.

REFERENCES

- ANDERSON, EDWARD, BAI, ZHAOJUN, BISCHOF, CHRISTIAN, BLACKFORD, L SUSAN, DEMMEL, JAMES, DONGARRA, JACK, DU CROZ, JEREMY, GREENBAUM, ANNE, HAMMARLING, SVEN, MCKENNEY, ALAN & OTHERS 1999 *LAPACK Users' guide*. SIAM.
- BI, W. 2008 Calculations of modes in circumferentially nonuniform lined ducts. *J. Acoust. Soc. Am.* **123**, 2603–2612.
- BI, WENPING, PAGNEUX, VINCENT, LAFARGE, DENIS & AURÉGAN, YVES 2006 Modelling of sound propagation in a non-uniform lined duct using a multi-modal propagation method. *Journal of Sound and Vibration* **289** (4-5), 1091–1111.
- BLACKSTOCK, DAVID T 1966 Connection between the fay and fubini solutions for plane sound waves of finite amplitude. *The journal of the Acoustical Society of America* **39** (6), 1019–1026.
- BRAMBLEY, EJ & PEAKE, N 2008 Sound transmission in strongly curved slowly varying cylindrical ducts with flow. *Journal of Fluid Mechanics* **596**, 387–412.

- CABELLI, A 1980 The acoustic characteristics of duct bends. *Journal of sound and vibration* **68** (3), 369–388.
- CAMPOS, LMBC 1984 Some general properties of the exact acoustic fields in horns and baffles. *Journal of Sound and Vibration* **95** (2), 177–201.
- FAY, RICHARD D 1931 Plane sound waves of finite amplitude. *The Journal of the Acoustical Society of America* **3** (2A), 222–241.
- FÉLIX, S & PAGNEUX, V 2001 Sound propagation in rigid bends: A multimodal approach. *The Journal of the Acoustical Society of America* **110** (3), 1329–1337.
- FÉLIX, S & PAGNEUX, V 2002 Multimodal analysis of acoustic propagation in three-dimensional bends. *Wave Motion* **36** (2), 157–168.
- FERNANDO, RASIKA, DRUON, YANN, COULOUVRAT, FRANCOIS & MARCHIANO, RÉGIS 2011 Nonlinear waves and shocks in a rigid acoustical guide. *The Journal of the Acoustical Society of America* **129** (2), 604–615.
- FUBINI, E. 1935 Anomalia nella propagazione di onde acustiche di grande ampiezza. *Alta Frequenza* **4**, 530–581.
- GILBERT, JOËL, DALMONT, JEAN-PIERRE, POTIER, ROMAIN & REBY, DAVID 2014 Is nonlinear propagation responsible for the brassiness of elephant trumpet calls? *Acta Acustica united with Acustica* **100** (4), 734–738.
- GILBERT, JOËL, MENGUY, LUDOVIC & CAMPBELL, MURRAY 2008 A simulation tool for brassiness studies. *The Journal of the Acoustical Society of America* **123** (4), 1854–1857.
- HAMILTON, MARK F & BLACKSTOCK, DAVID T 1990 On the linearity of the momentum equation for progressive plane waves of finite amplitude. *The Journal of the Acoustical Society of America* **88** (4), 2025–2026.
- HAMILTON, MARK F, BLACKSTOCK, DAVID T & OTHERS 1998 *Nonlinear acoustics*, , vol. 1. Academic press San Diego.
- HIRSCHBERG, ABRAHAM, GILBERT, JOËL, MSALLAM, RÉGIS & WIJNANDS, APJ 1996 Shock waves in trombones. *The Journal of the Acoustical Society of America* **99** (3), 1754–1758.
- KUZNETSOV, VP 1971 Equation of nonlinear acoustics. *Sov. Phys. Acoust.* **16** (4), 467–470.
- MOLER, CLEVE & VAN LOAN, CHARLES 2003 Nineteen dubious ways to compute the exponential of a matrix, twenty-five years later. *SIAM review* **45** (1), 3–49.
- PAGNEUX, VINCENT, AMIR, N & KERGOMARD, JEAN 1996 A study of wave propagation in varying cross-section waveguides by modal decomposition. part i. theory and validation. *The Journal of the Acoustical Society of America* **100** (4), 2034–2048.
- RENDÓN, PABLO L, ORDUÑA-BUSTAMANTE, FELIPE, NAREZO, DANIELA, PÉREZ-LÓPEZ, ANTONIO & SORRENTINI, JACQUES 2010 Nonlinear progressive waves in a slide trombone resonator. *The Journal of the Acoustical Society of America* **127** (2), 1096–1103.
- ROSTAFIŃSKI, WOJCIECH 1991 *Monograph on propagation of sound waves in curved ducts*. National Aeronautics and Space Administration.
- THOMPSON, MICHAEL W & STRONG, WILLIAM J 2001 Inclusion of wave steepening in a frequency-domain model of trombone sound production. *The Journal of the Acoustical Society of America* **110** (1), 556–562.
- TING, LU & MIKSIS, MICHAEL J 1983 Wave propagation through a slender curved tube. *The Journal of the Acoustical Society of America* **74** (2), 631–639.
- WEBSTER, ARTHUR GORDON 1919 Acoustical impedance and the theory of horns and of the phonograph. *Proceedings of the National Academy of Sciences* **5** (7), 275–282.