

1-6-1949

The Tribune-Democrat, January 6, 1949

The Tribune-Democrat

Follow this and additional works at: <https://digitalcommons.murraystate.edu/td>

Recommended Citation

The Tribune-Democrat, "The Tribune-Democrat, January 6, 1949" (1949). *The Tribune Democrat*. 186.
<https://digitalcommons.murraystate.edu/td/186>

This Newspaper is brought to you for free and open access by the Newspapers at Murray State's Digital Commons. It has been accepted for inclusion in The Tribune Democrat by an authorized administrator of Murray State's Digital Commons. For more information, please contact msu.digitalcommons@murraystate.edu.

THE TRIBUNE-DEMOCRAT

TRIBUNE ESTABLISHED MAY, 1888; DEMOCRAT ESTABLISHED SEPTEMBER, 1900; CONSOLIDATED JUNE, 1903.

Marshall County's Leader in Circulation, Readership and Respect Since 1888



Volume LXII

BENTON, KENTUCKY, JANUARY 6, 1949

NUMBER 33

More Marshall County Road Improvement Being Planned

New Officers Take Over Duties Here

County Officers Went On Job As Of January First

LEONARD JONES, newly elected County Judge of Marshall County, took over the duties of that office January 1 from Judge Java Gregory who had served in that capacity for the past eight years.

VOLNEY BRIEN, newly elected Sheriff, assumed the duties of that office on the same date, taking over from Walker Myers who had served for the past six years.

HENRY H. LOVETT, JR., assumed the duties of County Attorney, taking over from Attorney Henry Holland.

Mark Clayton continues in the office of Marshall County Clerk having been re-elected by defeating his opponent, Charles "Tot" Jackson.

PRENTICE THOMPSON was already on the job as jailer as he had been filling that position since the resignation of Jailer Arthur Darnell.

A. A. Nelson was unopposed for re-election and continues in the office of Tax Commissioner.

RAYSON POWELL, representing District Four and Lonnie Filbeck, representing District Five, are the new magistrates in the line-up.

Leonard Jones defeated Walter L. Prince in the November general election for County Judge after having defeated two opponents in the August primary.

Volney Brien was unopposed in the fall election after having defeated eight candidates in the August primary.

Henry H. Lovett, Jr. beat Attorney Henry Holland, whom he replaces in the August primary.

PHILLIPS SHOWS NEW CHEVROLETS HERE SATURDAY

THE GREAT new 1950 Chevrolet will be on display at the Phillips Motor Company showrooms Saturday, January 7, according to an announcement made today by Mr. Phillips.

There will be free balloons for all the kids accompanied by their parents and other features of the Grand Showing are promised by Phillips.

THE AUTOMATIC transmission, hailed as the most revolutionary driving aid since the advent of the self-starter, makes its first appearance in the low-priced field, Saturday, January 7, with the introduction of 1950 Chevrolets.

IMPROVEMENTS through the 1950 chassis and bodies are many. New "Power-Jet" carburetor eliminates the "lean" periods in gasoline feed and affords quicker warm-up in cold weather. Larger exhaust valve capacity helps power output.

DRIVING WITH THE Powerglide is simple. On the steering column is mounted a quadrant in miniature somewhat like power controls on ocean liners. The quadrant is marked from left to right with "Park," "N," "D," "L," and "R." A lever under the steering wheel positions a pointer at one of the five stations. To start the engine, the pointer may be placed at "N" (Neutral) or "Park." Otherwise the starter button on the dash remains ineffective. With the engine started, the lever is moved to place the pointer at "D" (Drive). For ordinary travel forward movement there is dependent on throttle pressure alone.

THE ENGINE used with the Powerglide develops 105 horsepower at 3,600 revolutions per minute. Displacement is 235.5 cubic inches with a bore and stroke of 3.75 inches and 4.75 inches respectively. The engine is a "V" type, with overhead valves, and is equipped with a "Power-Jet" carburetor.

THE GOLDBERG Show goes on at the Capitol Cloakroom 3-34 World Tonight

New Mayor Holds First Session Of Council Monday

J. T. KINNEY, new Mayor of Benton, officiated at his first council meeting Monday night.

MAYOR KINNEY, operator of Kinney Tractor and Appliance Company and Kinney Motor Company, took over from H. T. Morgan, who has served the City of Benton through a successful administration which closed with the end of the year.

The Mayor officiated at the swearing-in of two new members of the council, Milton Hawkins and Guy Mathis, he having been previously sworn in by the County Judge.

NEAL OWENS was reported by the council to serve as Chief of Police and Charles Carroll as night police officer.

ELWOOD GORDON was appointed city attorney.

Elva Post Office Robbed Sat. Night

THE ELVA POST OFFICE was entered and robbed Saturday night of \$124.62 in cash and \$72.71 in postage.

THE THIEVES were reported to have entered the post office through a freight room door and to have carried off a fire-proof safe containing the stamps and cash. They put the safe on a truck or car and hauled it about two miles out of Elva where they abandoned it after having forced the door open with an axe and removed the contents.

THE SAFE contained holiday receipts for stamps and money orders, postmaster Albert Boulard reported. Postal Inspector R. O. Sealey is in charge of the investigation and he issued a warning to postmasters to keep receipts moving and not to retain money in the offices overnight when possible to do otherwise.

Trevathan Honored

F & A M Reelects Him For 23rd Time

B. L. TREVATHAN was signally honored by T. L. Jefferson, Benton Lodge 622 when it elected him for the twenty-sixth consecutive time to serve as treasurer.

HE BECAME cashier of the Bank of Marshall County in 1920 and was elevated to the Presidency a year ago following the death of Judge Joe L. Price, who had served in that capacity for many years. Hatter E. Morgan is now cashier, holding the position Mr. Trevathan filled for so many years.

The family consists of his wife, Yally, and two daughters, Mrs. Ned (Margaret) Pace is assistant cashier at the bank, and Mrs. Pete (Mary) Gunn, Jr., resides in Benton.

SORRY due to lack of space several obituaries and lodge election stories were held over. Will use next week.

MR. TREVATHAN, President of the Bank of Marshall County, has a long history of active participation in Masonic affairs. He became Worshipful Master of the Benton lodge in 1923; has served on the finance committee of the Grand Lodge of Kentucky; is Past High Priest of Benton Chapter R. A. M. and served as treasurer for several years, and is also Past Worthy Patron of Benton Chapter, Eastern Star.

HE FIRST became a Mason while living at Hardin, at the age of 21 and has been active ever since.

Mr. Trevathan has served the Kentucky Bankers Association as President of Group One and as a member of the Executive committee for the State at large.

County Man Has Part In Board Of Trade Meet

MARSHALL COUNTY was represented at the annual Year's reception of the Louisville Board of Trade by Rayburn Watkins, editor and co-publisher of the Tribune-Democrat.

MR. WATKINS was present in his official capacity as an active member of the executive group who will direct the affairs of the newly formed Louisville Chamber of Commerce.

VICE PRESIDENT Albert W. Barkley, of Paducah, was a featured speaker at this important banquet. Governor Earle C. Clements and United States Representative Thurston B. Morton were also featured speakers.

LOUISVILLE'S Mayor Chas. P. Farnsley and county judge B. L. Shamburger extended greetings to the guests and the new organization just coming into being.

THE MEETING was held from 10 a. m. to noon at the Brown Hotel and midway of the occasion the Board of Trade went out of existence and the new Louisville Chamber of Commerce came into being by the combining of four important organizations into the master group.

BESIDES THE Board of Trade, the new Chamber is composed of the Louisville Convention Bureau, Louisville Area Development Association and Retail Merchants Association.

MR. WATKINS took over his office duties Tuesday morning on the first day the new organization was open for business. He reports that he will retain his interest in the Benton Tribune-Democrat and will be working for the best interests of his home county from his Louisville position.

TRIBUNE SET TO OPERATE WEATHER MAN

Bureau Installs Device for Local Information

The Tribune-Democrat this week took over the operation of Marshall County's Weather Station of the United States Weather Bureau.

Arrangements were worked out with William A. Meyers, hydro-metric inspector of the Louisville Bureau, who installed the apparatus Saturday morning. The Tribune felt that more statistical information about actual rainfall and other local weather reports might be of interest to farmers and other residents of the community.

At the same time it filled a need for the Weather Bureau in getting someone to make local readings and send them to Louisville regularly. Seven different persons in the past have made the reports but few have kept up the work over a period of time.

The Marshall County "weather man" is set up at Bill Nelson's farm just at the edge of town. The Tribune ventures no predictions—but from time to time will report the "facts" garnered from readings.

NEW TELEPHONE DIRECTORY NOW IN USE HERE

A NEW TELEPHONE directory for Benton, containing many new and changed listings and other helpful information, has just been distributed.

APPROXIMATELY 600 new directories have been delivered to home and offices, according to Mr. J. M. Sanders, District Manager for the Southern Bell Telephone Company.

The new directory has a green cover, which makes it easily distinguishable from the old gray-covered telephone book.

MR. SANDERS asks that telephone users refer to the new directory for the desired number. Looking up the number helps avoid the possibility of getting a wrong number, and frequently saves time for the calling party as well as the party who might be called in error.

Consulting the directory also helps make the best use of already crowded central office equipment. "Information" should be called only when the desired number is not listed in the directory.

THE DIRECTORY includes the classified section—yellow pages—containing helpful information conveniently arranged as to types of businesses and services.

Mr. Sanders requests that good care be taken of the new copies. He also suggests that the old directories be turned over to scrap paper collectors with other waste paper.

SHARPE HONOR ROLL Given By Teacher

Crowning of Hardin Basketball Queen

MISS BARBARA NELL MATHIS, daughter of Mr. and Mrs. Freeman Mathis, is Hardin basketball queen. The queen and her attendants were left to right (front row) Janice Pace, Ben Crimm, Evelyn Cope, Lynn Gardner, Darnell, Wanda Holland, Charles Morgan, Darwin Lee, Ann Gay, Judy Johnston, Betty Clark 1948-1949 queen, Joe Mathis, Dean Hamilton, Willie Ethridge, Wilma Mathis, Jerry Ross, Brenda Starks; (back row) Ruby Nell Clark, Paula Cole, Mary Lee Sires, Nell Miller, Sue Starks Cope, Oneal York, Radford Conner, Pat Edwards, Miss Mathis, Wandell Watkins, Edmond Pritchard, Larry Gardner, Coach C. B. Hendon, Van Thomas Sires, Joe Norsworthy, Kenny York and Joe Boyd Mimms.

Funeral Services For Ray A. Smith Held Last Week



RAY A. SMITH

THE HOLIDAY season this year brought death to many families—some unexpectedly—two from heart attacks.

Ray A. Smith of Benton, a former state senator, died Saturday night, December 26, at the Jewish Hospital in Louisville. He was buried in the Benton Cemetery Monday, December 28, after a funeral service in the Methodist Church conducted by the Rev. Harry Williams, pastor.

GRAVESIDE rites were conducted by T. L. Jefferson, Benton Lodge of Masons. Mr. Smith was a steward of the Benton Methodist Church and a member of the lodge. He also was a member of Benton Commandery 46, Knights Templar, and Royal Arch Masons 167.

Mr. Smith served in the state senate in the thirties representing Lyon and Marshall Counties.

He was a native of Cincinnati, Ohio, and was a salesman for the Standard Printing Company in Louisville. Mr. Smith, who was 47 years old, had lived in Benton 25 years.

HIS WIFE is Maybelle Nelson Smith, daughter of A. A. (Arch) Nelson. Other survivors include two daughters, Miss Betty Ray Smith, a Benton High School teacher, and Miss Jo Ann Smith; and a brother, R. E. Smith of California.

Sharpe Honor Roll Given By Teacher

The honor roll for the 3rd and 4th months for the 7th and 8th grades at Sharpe School as reported by Mrs. Wilkins, sponsor are:

Third month: Dolores Blakney, Freda Blakney, Patricia Brown, Martha S. Cothan, Donald Bearfield, Elvis L. Emerson, Robert Sowler and Jimmy Kinnes. Fourth month: Donald Bearfield, Jimmy Kinnes, Frieda Blakney, Patricia Brown, and Martha S. Cothan.

Coach Dorse O'Dell and his Sharpe Green Devils brought more basketball honors to Marshall County last week by completely outclassing all competition in the Paducah J. C. Invitation Christmas Tournament.

WHIPPING ST. MARY'S by 15 points in the opening round the Green Devils walked over Barlow-Kevil 68-37 in the semifinals and wound up the tournament by trouncing Tilghman's Tornado by 63-45.

These three games brought the Demons of Sharpe to fourteen victories in no defeats for the season and a raving by the sportswriters as the unchallenged basketball leaders of Western Kentucky.

LEON INGLISH tallied 55 points in the tournament, to step into the lead of high scorers in the Purchase with a total of 242 points. Huey Ramage of Reidland has him tied for over game average of 17.4 but has played in only eight games.

CALVERT CITY is running second to Sharpe in Marshall County with nine victories and three defeats. Hardin has eight victories against four defeats. Brewers has a 50-50 average

BANKS NAME ALL OFFICERS AT YEAR END MEET

THE BANK of Marshall County and the Bank of Benton elected officers and directors at their year end meetings.

The Bank of Marshall County re-elected all officers and board members. The officers are: R. E. Foust, Chairman of the Board; B. L. Trevathan, Vice-President; Tullus Black, Vice-President; H. E. Morgan, Cashier; E. L. Starks, Asst. Cashier; Clois Holmes, Asst. Cashier; Margaret Pace, Asst. Cashier; J. M. Dotson, Bookkeeper and Betty Black, Secretary.

DIRECTORS are: R. E. Foust, Tullus Black, B. L. Trevathan, H. E. Morgan, W. F. Roberts, J. C. Houser, E. T. Laman, G. T. Chester and J. T. Kinney.

TOTAL RESOURCES were reported as \$2,485,138.86.

THE BANK of Benton reported only one change in personnel. That of Robert Lee Ross as bookkeeper instead of Myrlin M. Nichols who was in that position at the last report.

OTHER OFFICERS are: J. P. Stille, President; Fred Filbeck, Vice-President; C. D. Nichols, Cashier; Myrlin M. Nichols, Asst. Cashier; Paul Darnall, Asst. Cashier; Elvira Breezeel, Bookkeeper; and Kathleen Jennings, Bookkeeper.

DIRECTORS are: J. P. Stille, C. R. Smith, C. D. Nichols, Paul Darnall, Fred Filbeck, Cliff Treas, Mark Clayton, Charlie Cone and H. L. Sutherland.

TOTAL RESOURCES reported were \$1,805,982.21.

Tullus Chambers Is PTA Speaker

TULLUS CHAMBERS, City School Superintendent, will speak on "School Legislation" at the January 9 meeting of the Benton Chapter of the Parent-Teacher Association.

THIS MEETING will be held at the school and will start promptly at 7 p. m. The program was arranged by Mrs. A. A. Nelson, program chairman. The public is invited to attend.

CHERRY GROVE GREETINGS READERS

By Effie Bowden

1950 rushed in with a new Blaggy boy for this scribe's family, making 6 grandsons along with the 8 sons. The new boy is Robert Mitchell Blaggy, son of Mr. and Mrs. Billy Blaggy.

RESOLVED: Our family of boys remain one round dozen.

Sharpe Wins Again

Outclass Others In Xmas Tournay

COACH DORSE O'DELL and his Sharpe Green Devils brought more basketball honors to Marshall County last week by completely outclassing all competition in the Paducah J. C. Invitation Christmas Tournament.

WHIPPING ST. MARY'S by 15 points in the opening round the Green Devils walked over Barlow-Kevil 68-37 in the semifinals and wound up the tournament by trouncing Tilghman's Tornado by 63-45.

These three games brought the Demons of Sharpe to fourteen victories in no defeats for the season and a raving by the sportswriters as the unchallenged basketball leaders of Western Kentucky.

LEON INGLISH tallied 55 points in the tournament, to step into the lead of high scorers in the Purchase with a total of 242 points. Huey Ramage of Reidland has him tied for over game average of 17.4 but has played in only eight games.

CALVERT CITY is running second to Sharpe in Marshall County with nine victories and three defeats. Hardin has eight victories against four defeats. Brewers has a 50-50 average

Department Advertises Here For Bids On Three Highways

ABOUT 19 MILES IN THE PROGRAM

NEW PLYMOUTHS TO BE SHOWN NEXT THURSDAY

THE BENTON Auto Exchange announces that the new 1950 American Beauty Plymouth autos will be on display at their show rooms Thursday, January 12.

J. D. GAMMEL, operator of garage and showrooms, says that the new Plymouth is the finest, most beautiful and most nearly mechanically perfect of any car ever shown by Plymouth.

A big day for this grand showing is being planned by Mr. and Mrs. Gammel, plans were not complete enough for an announcement at this time. The great new Dodge, with five models on the floor, was shown there Thursday of this week.

Calvert Brothers Jailed Last Week

TWO CALVERT CITY brothers, William Elmer and Harold Lewis Dawes, were placed in the Myfield jail Sunday on a charge of robbery.

THEY WERE charged with having robbed a Dublin community farmer of \$50 in cash and a check for \$59.65. Harold was arrested Sunday near Calvert City by Sheriff Walker Myers and State Trooper William "Buck" Brien.

William, just recently released from Federal prison after having served more than two years of a fifteen year sentence before the sixth district circuit court of appeals set aside his sentence. The sentence was for robbery of the Calvert City Bank and appeals judges said avoidance against the prisoner was too scant for conviction.

He was arrested Saturday night in Paducah. Seven police officers participated in the arrest at a tavern at Ninth and Washington streets, Chief Barkley Graham said.

WARRANTS on which the men were arrested accused them of robbing Jeff Viverette of \$50 cash and a check for \$59.65, the check had been cashed when Viverette attempted to stop payment on it, he said, he had been forced by the robbers to endorse it.

FREE COFFEE and donuts will be served at this new market throughout the big opening day. And a free basket of groceries will be given as door prizes each hour of the day. The store will open promptly at 9 a. m. and close at 7 that evening.

MR. HUNT said that he wishes to extend his thanks and appreciation to all who have helped his business expand to the point where he could build and open this new and modern food center. He extends a special invitation to all to come and inspect the new market on the opening day.

A FULL LINE of groceries, fruits and vegetables as well as the famous PicSweet line of Frozen Foods, will be offered at this modern self-service market.

VETS MEET ON FARM TRAINING

ALL VETERANS who are interested in enrolling in the "On the Farm Training Program" at any of the county high schools or Benton, are requested to meet in the large court room at Benton, Monday, January 9 at 1:30 p. m.

This is an important meeting. If any veteran desires to enroll in the Farm Training Program within the next 6 months, he should attend this meeting.

CHAS. TOT JACKSON NOW WITH PEEL & HOLLAND

Charles "Tot" Jackson has joined the staff of the Peel and Holland Insurance Agency, it was learned today.

A formal announcement will be made within the next several days by the agency.

REV. WILSON TO PREACH AT CHRISTIAN CHURCH

The Rev. Paul Wilson of Murray, Kentucky, will preach at the Christian Church Sunday, January 8 at 11 a. m.

THE DEPARTMENT of highways has a public notice for bids for improvement of nearly nineteen miles of Marshall County roads on an inside page of this issue of the Tribune-Democrat.

SEALED BIDS will be received until 10 a. m. January 13 at the offices of the department in Frankfort, the notice states.

THREE SECTIONS of road are to be improved. The first listed is 5 miles extending from Calvert City-Gilbertsville Road from the N. C. L. of Calvert City to Tennessee River at Gilbertsville.

The second listed is Benton-Calvert City Road from U. S. 68 near Palma to N. C. L. of Calvert City, and is 6.076 miles. The third section listed is the Benton-Mayfield Road from Main and Cross Streets in Benton to KY 48 near Brewers, and is 7.934 miles.

Further information that given in the official notice, bidding proposals, et cetera, may be secured by application to the Frankfort Office and the Department announces that it reserves the right to reject any and all bids.

ANNOUNCES NEW MARKET TO OPEN HERE SATURDAY

C. C. HUNT is announcing the Grand Opening, Saturday, January 7, of his new and modern Drive-In Market at the corner of 8th and Main Streets.

MR. HUNT has been in the grocery business at his old location, just across the street, for the past 22 years and many customers who started with him are still trading there.

T. S. 'PREACHER' Hendrickson has completed 12 years as a clerk with Mr. Hunt and Mary Frances Copeland has been employed by Mr. Hunt for 20 years, though not consistently.

FREE COFFEE and donuts will be served at this new market throughout the big opening day. And a free basket of groceries will be given as door prizes each hour of the day. The store will open promptly at 9 a. m. and close at 7 that evening.

MR. HUNT said that he wishes to extend his thanks and appreciation to all who have helped his business expand to the point where he could build and open this new and modern food center. He extends a special invitation to all to come and inspect the new market on the opening day.

A FULL LINE of groceries, fruits and vegetables as well as the famous PicSweet line of Frozen Foods, will be offered at this modern self-service market.

VETS MEET ON FARM TRAINING

ALL VETERANS who are interested in enrolling in the "On the Farm Training Program" at any of the county high schools or Benton, are requested to meet in the large court room at Benton, Monday, January 9 at 1:30 p. m.

This is an important meeting. If any veteran desires to enroll in the Farm Training Program within the next 6 months, he should attend this meeting.

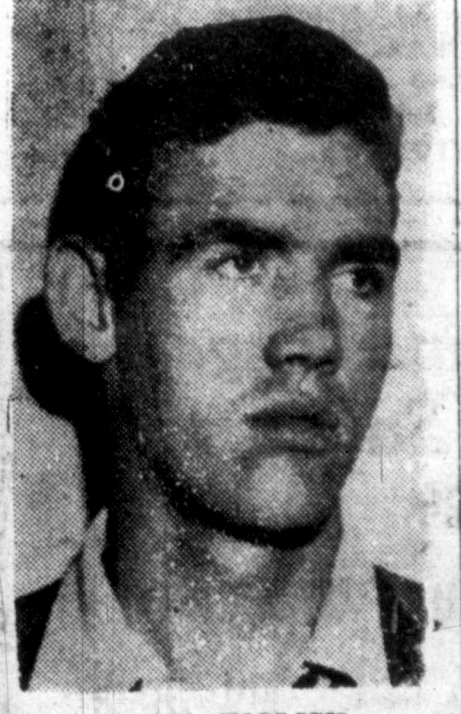
CHAS. TOT JACKSON NOW WITH PEEL & HOLLAND

Charles "Tot" Jackson has joined the staff of the Peel and Holland Insurance Agency, it was learned today.

A formal announcement will be made within the next several days by the agency.

REV. WILSON TO PREACH AT CHRISTIAN CHURCH

The Rev. Paul Wilson of Murray, Kentucky, will preach at the Christian Church Sunday, January 8 at 11 a. m.



LEON INGLISH

SHARPE, a one time winner of the Kentucky State Championship is being touted statewide as the team to beat for the championship this season, and Purchase fans are beginning to feel that it is a cinch.

The Tribune-Democrat

Printed Friday morning of each week at 1206 Main Street in Benton, Ky. Entered as second class matter June 10, 1903 at post office in Benton under Act of Congress March 3, 1879.

Nelson and Watkins—Publishers

WILLIAM NELSON	MANAGER
RAYBURN WATKINS	EDITOR
PAUL B. RAGSDALE	ASSOCIATE EDITOR
EFFIE BOWDEN	CIRCULATION MANAGER
VAN WYATT	SHOP MANAGER
FAY MELTON	PRESSMAN
MARY GREEN	NORTH CHURCH GROVE
MRS. WALLACE CHANDLER	BRIENSBURG
DENA JONES	ALTONA
MRS. BERT NELSON	FAIR DEALING
REBA JOHNSON and BETTY BARKER	GRIGGSTOWN
UKLEY McNEELY	AURORA
IVA CAMPBELL	SHARPE
WILLIAM PECK	PLEASANT HILL
MARTHA MATHIS	CLARK
MRS. GILBERT WALTERS	OAK LEVEL
MRS. FANNIE LEE	HARDIN ROUTE
MRS. BYRON SHERWELL	SYMSONIA
VITUS OWENS	THOMPSON'S SHOP
JOE GREEN	BENTON HIGH SCHOOL
BETTY HOGGOOD	CALVERT CITY
L. P. RYCKERT	BENTON ROUTE
ROBBIE AND TOMMIE	POSSUM TROT
LAWRENCE T. PUCKETT	FREEDOM CORNER
MARGIE LEE	PALESTINE
"IPPY"	MYERSTINE

ANNUAL SUBSCRIPTIONS
Marshall County, \$1.00; Surrounding Counties, \$1.50;
Out of State, \$2.00

1888	1919
1889	1920
1890	1921
1891	1922
1892	1923
1893	1924
1894	1925
1895	1926
1896	1927
1897	1928
1898	1929
1899	1930
1900	1931
1901	1932
1902	1933
1903	1934
1904	1935
1905	1936
1906	1937
1907	1938
1908	1939
1909	1940
1910	1941
1911	1942
1912	1943
1913	1944
1914	1945
1915	1946
1916	1947
1917	1948
1918	1949
	1950

The Tribune Wishes You HAPPY NEW YEAR for the 63rd Time

Around The Square

WRONG GARMENT: Two-year-old Harriet Ann Craig, daughter of Mr. and Mrs. Bill Craig, was singing Christmas carols with her three-year-old brother, Billy.

Mrs. Craig was busy teaching them "Silent Night." Harriet Ann would sing lustily until she came to the words "sleep in heavenly peace," then... complete silence.

"Why don't you finish the verse," her mother inquired.

"But I sleep in pajamas, mother," Harriet Ann retorted unexpectedly.

HOME-COMING: The Benton High School gym was bulging on Wednesday, December 28, and Friday, December 30, with students and former students out for a little exercise in their favorite sport—basketball.

There were 100 of them... ranging in size from the grade school pee-wees up to college men home for the holidays. Joe Duke, Homer Solomon and Prof. Chambers were on hand all day, even during dinner... and everyone had a fine time. The kids appreciated it... and so did those back home for the holidays.

"Just like the old days," one of them said after a brisk six-minute quarter against some of his erstwhile schoolmates of previous years.

Liniment sales were reported "up" at the drug stores the next day.

One of the fellows suggested we print something about it so Mr. Chambers and the others will know they appreciated the "assist" in their vacationing.

THE TRIBUNE had several requests for extra copies of its holiday edition — specifically for the year-end roundup of the county news.

FOLKS at the Cigar Factory fared pretty well during 1949—vacation, regular work, regular pay. Let's hope nothing happens to alter this during 1950.

DR. C. G. MORROW
CHIROPRACTOR
108 East 12th
South Side Square
BENTON, KY.
Office Hours Daily
Phones: Office 5631 Res: 2183

Friers and Eggs For Sale
at
Benton Produce Company
We buy Chickens, Eggs and Cream
Beef Hides Wanted
1000 Main Street Benton, Ky.



A Chatterbox Of Sportlore

By RAYBURN WATKINS

THE ANNUAL Purchase-Pennyrile Games at Murray somehow tells a story of Marshall County basketball since 1935—for there hasn't been a single year that a local team hasn't been featured in a main bout or a juicy preliminary.

It also indicates a superiority of basketball in the Purchase—even though the Pennyrile section, rather loosely defined, covers at least twice the territory.

IT ALL started in 1936 when Bowers was edged by Nebo 25-19. The Pennyrile didn't win again until 1940, when Kuttawa, who had plucked Joe Fulks from Birmingham, topped Pilot Oak 32-29. The tournament started as a single game attraction—that is a "main go" together with preliminaries. Calvert played—and won—a preliminary in 1936 and Hardin pulled the same in 1937—the year that Kirksey trounced Clay 41-15.

THE PURCHASE-Pennyrile games, which pit the best teams from the two sections in one night of good basketball, have failed to send a team to the state tournament only once.

It seemed almost sacrilegious last year when Sharpe turned down a bid to play in the Purchase-Pennyrile game for they seemed a sure bet for the trek to Louisville—and may have put the whammy on themselves by accepting another bid instead.

HISTORY shows the teams picked by the selection committee have fared well. In 1936, Nebo went to the finals. In 1937 Kirksey won the regional and went to the state tournament. In 1938 the Purchase-Pennyrile winner was Sharpe, who won the state championship. In 1939 Heath beat Olmstead in the Purchase-Pennyrile game but Olmstead's Buck Snyder, later a real star at Western, saw that his team won in their region and got into the state tournament act.

In 1940, when Fulks and Company beat Pilot Oak 32-29, the boys from Kuttawa—riding on the shoulders of the Marshall County native—won in the Second Region and took their laurels with them to Louisville.

ONLY ILLNESS of two key me kept Hardin, winner of the 1941 Purchase-Pennyrile game, from going all the way. They trounced undefeated Harford 29-22, met them later in the state tournament and won again—and lost by only one point to Inez, who won the tournament.

In 1942 Harford was back in the act again. They had lost the great Embury, a Western star—but back was the equally great Johnny Oldham. It was only living up to history when they won their regional and made their second trip to Louisville in as many years.

BENTON'S most consistent winning team, the fabulous five of 1943, nosed out Crofton 23-21 on a last minute basket by Julian Jones. Later they beat Brewers the second time—for the only two losses they suffered all year—in capturing the district title. From there it was easy to take the regional, and the sectional where they met and defeated Crofton—their Purchase-Pennyrile rival—in the second round of the state tournament.

It was Bowers over Daviess County 42-26 in the 1944 game—and Brewers it was, with Adlich and McGregor showing the way—who made the trek to Louisville.

Things went awry in 1945 but Owensboro, led by the great J. M. Gipe, won their regional even though Benton took their toll 38-25 in the Purchase-Pennyrile. In 1947 it was the great Redmen over Beaver Dam 44-35—who went on to be runner-up in the state tournament... and again in 1938 when they went all the way to win the state title. Things didn't pan out for the Purchase-Pennyrile teams in 1949. Sharpe was the first choice but declined an invitation. They lost out to Calvert, the second choice, who played in the Purchase-Pennyrile Game—and won.

This year? Who knows. But if history runs true to form at least one or more of the teams who take the floor in this year's game will be seen among the "Sweet Sixteen" come real tournament time.

COMMONWEALTH OF KENTUCKY DEPARTMENT OF HIGHWAYS NOTICE TO CONTRACTORS

Further information, bidding proposals, et cetera, will be furnished upon application to the Frankfort Office. The right is reserved to reject any and all bids.

DEPARTMENT OF HIGHWAYS Frankfort, Kentucky December 26, 1949.

When In Mayfield VISIT VINCENT'S for INFANTS' AND CHILDREN'S READY-TO-WEAR Boys' Cowboy Shirts, Hats and Suits. VINCENT'S South Side Square — Mayfield

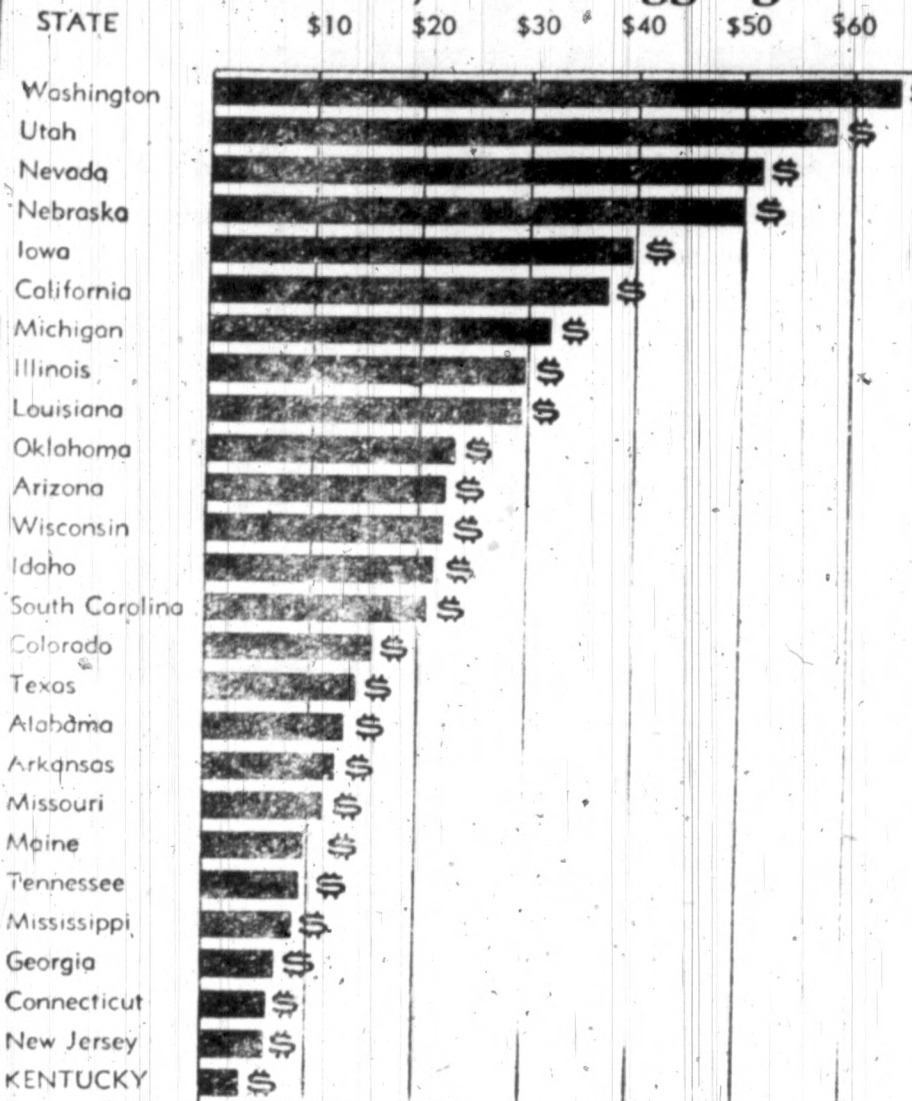
HATS
Styled by C H A M P
at the BENTON STYLE MART STORE

The attention of prospective bidders is called to the pre-qualification requirements, and necessity for securing certificate of eligibility, the special provisions covering subletting or assigning the contract and the Department's regulation which prohibits the issuance of proposals after 4:30 P. M. of the day preceding the opening of the bids.

The quantities are intended to indicate the approximate volume of the proposed work. See bid form for final completed estimates. Alternate bids on bituminous surfacing types will be received, if the Department so elects and includes a provision for alternates in bid forms.

NOTE: A PURCHASE CHARGE OF \$10.00 WILL BE MADE FOR EACH PROPOSAL. REMITTANCE MUST ACCOMPANY REQUESTS FOR THE PROPOSAL FORMS. REFUNDS WILL NOT BE MADE FOR ANY REASON.

Kentucky Still Lagging



How Kentucky compares with other states in state appropriation per white youth, aged 18-22, to state university system, is shown in the above chart prepared by the University of Tennessee. The University of Kentucky is asking the General Assembly for \$6,127,390 for 1950-51 and \$6,332,300 for 1951-52, less than the amount received this year by neighboring state universities.

Pleasant Hill:

Peck Receives Greetings From Many Places At Xmas

By William Peck

Good morning folks, we hope everyone has enjoyed a great Christmas and happy New Year. This scribe enjoyed greetings from Benton, Calvert City, Lexington, Tennessee, Missouri and many other states which we will not take space to itemize. Someone said a few days ago that if they were known as well as I they would run for President of the U. S.

Neighbors. As one day there was a fellow who got mad-dog bit, he lived to himself, he took his tablet and pencil and jotted down name after name, one day a man passed by and ask what he was writing. He said, "Well it is just like this, I got mad-dog bit, and I am putting down everybody's name I am going to bite when I go mad."

Again let me drop this closing thought, read the 53rd chapter of Isaiah.

HURRY! HURRY!

JANUARY CLEARANCE

You Never Saw Such Bargains!

Suits Were \$49.50 NOW **\$35**

Suits Were \$32.50 NOW **\$19.95**

Suits & Topcoats Were \$44.75 NOW **\$34.50**

Sport Shirts 1-3 Off

All Jackets 1-4 Off

Big Selections - Bargains Galore! Shop and Save As Never Before!

ALL PRICES SLASHED

100 TIES Reg. \$1 to \$2 Values Now 55c - 2 For \$1

75 White Shirts "Nationally Advertised" 25 per cent Off

BENTON STYLE-MART STORE
Elton Telle, Manager
12th and Main

Around the County Farm Front

By J. Homer Miller



THE NEW YEAR is here. Could you tell what your income expenses were last year? I'll bet J. D. Ursey could. He has a complete set of records on his farm operations. Mighty important you know what is paying off and what is losing you money. Record book may be secured at this office.

George Holland says, "He has decided he will never get a work done." It would be bad if we didn't have something to do we wouldn't be making progress if we were satisfied with what we have. We must keep improving and that calls for work most of the time.

IT'S A FACT, one good cow is equal to three average ones. One net return, one good hen is equal to three average hens, they are given proper feed and management.

W. C. OVERBY, Elva Route 1 is spreading his tobacco on his meadow as the tobacco is stripped. He says, "They do anyone any good piled beside the barn, but do make a good fertilizer on the field." Tobacco stalks lose most of their nitrogen and potash if left out in the rain for a short time.

W. W. SHERWELL is worried about the coal strike. He has a circle-saw attachment for his tractor to cut down cuttings of firewood to burn in his wood burning furnace for the home. A lot of money, too. A cord of wood is equal to a ton of coal. Much could you save?

THE CALVERT CITY Vet class is learning how to use the hog house method of cutting up their hogs. If you are interested there is a mighty good circular available "Hog killing and curing the meat," that you can get for the asking.

HOY THOMPSON out Hardin way is the owner of the walk-through-pit dairy barn in the county. "It saves a lot of stooping at milking time," he said, "you know I haven't had hay yet either—good pastures of ladino clover and Ky 31 to make the cows pour the milk. I couldn't get along without a pasture."

WE ARE NOT SATISFIED UNLESS WE SATISFY YOU

Fair Treatment
Fine Goods
Money Savings

DEPENDABLE MERCHANDISE RELIABLE SERVICE

The Store for Everybody
Bailey Hardware & Furniture Co.
telephone 3041 Benton, Kentucky

Filbeck Funerals

Telephone Benton

WHEN IN PADU Hank

212 Broadway Hardware, Paints, "MOST EVERYTHING"

WPA SCHE

96.9 Meg. Channel 2 January

MONDAY THROUGH FRIDAY

- 7:00 World News Roundup — CBS
- 7:15 Music for Monday, etc. — ETM
- 8:00 News of America — CBS
- 8:15 Barnyard Follies — CBS
- 9:00 Music for You — CBS
- 9:15 Arthur Godfrey — CBS
- 9:30 Arthur Godfrey — CBS
- 9:45 Arthur Godfrey — CBS
- 10:00 Arthur Godfrey — CBS
- 10:30 Paducah Calling — ETM
- 11:00 Wendy Warren News — CBS
- 11:15 Church of Christ — studio
- 11:30 Helen Trent — CBS
- 11:45 What's New — ETM
- 12:00 Big Sister — CBS
- 12:15 Ma Perkins — CBS
- 12:30 World News — Studio
- 12:45 The Guiding Light — CBS
- 1:00 Hits and Bits — ETM
- 1:15 Perry Mason — CBS
- 1:30 Nora Drake — CBS
- 1:45 Afternoon Melodies — CBS
- 2:00 Young Dr. Malone — CBS
- 2:15 Hilltop House — CBS
- 2:30 Latin American Rhythms — ETM
- 3:00 Gary Moore — CBS
- 3:55 The News — CBS
- 4:00 Treasury Bandstand — CBS
- 4:30 Hugo Malin — CBS
- 4:45 Dance Parade — ETM
- 5:15 Columbia Feature — CBS
- 5:30 Curt Massey — CBS
- 5:45 Jive Time — ETM
- 6:00 Local News — Studio
- 6:15 Dinner Music — ETM
- 6:30 Club 15 — CBS
- 6:45 Ed Murrow News — CBS

MONDAY NIGHT

- 7:00 Inher Sanctum — CBS
- 7:30 Bob Grant — ETM
- 8:00 Lux Theatre — CBS
- 9:00 My Friend Irma — CBS
- 9:30 Bob Hawk — CBS

TUESDAY NIGHT

- 7:00 Mystery Theatre — CBS
- 7:30 The 'Nortons' — CBS
- 8:00 Life with Luigi — CBS
- 8:30 Escape — CBS
- 9:00 Pursuit — CBS
- 9:30 Jimmy Dorsey — CBS
- 10:00 World Tonight — CBS

WEDNESDAY NIGHT

- 7:00 Mr. Chameleon — CBS
- 7:30 Dr. Christian — CBS
- 8:00 Groucho Marx — CBS
- 8:30 Ring Crosby — CBS
- 9:00 Burns & Allen — CBS
- 9:30 Lum & Abner — CBS
- 10:00 The World Tonight — CBS

THURSDAY NIGHT

- 7:00 FBI in Peace & War — CBS
- 7:30 Mr. Keene — CBS
- 8:00 Suspense — CBS
- 8:30 Crime Photographer — CBS
- 9:00 Hallmark Playhouse — CBS
- 9:30 Musical Reverie — CBS
- 10:00 The World Tonight — CBS

FRIDAY NIGHT

- 7:00 The Goldbergs — CBS
- 7:30 The Beerite Husband — CBS
- 8:00 The Show Goes on — CBS
- 8:30 The Case for Sunday — ETM
- 9:00 The Gitol Clockroom — CBS
- 9:30 World Tonight — CBS

County Front Homer Miller

JANUARY 6, 1949

Filbeck & Cann Funeral Home

Telephone 4681

Benton Kentucky

WHEN IN PADUCAH VISIT- Hank Bros.

212 Broadway Paducah, Ky. Hardware, Paints, Wallpaper, Cookware "MOST EVERYTHING for the HOME"

WPAD-FM SCHEDULE

96.9 Meg. Channel 245 18,000 Watts ERP January 1950

Table with radio schedule for WPAD-FM, listing programs and times for Monday through Friday, Saturday, and Sunday.

Altona Correspondent Spends Vacation In Southland

Altona:

By Dena Jones

Hi, Everybody:

I'm back from a long visit in Mississippi, Georgia, Alabama and Florida. The land of sunshine? Hubby and I left home early one Monday morning, arrived in Columbus, Miss. around 3 p. m. at the home of Mr. and Mrs. Roy Jolly. Next morning Mrs. Jolly, baby and I left the men behind and started two hundred miles farther south to visit Mr. and Mrs. D. E. Runnels of McGee, Mississippi.

fashioned southern lunch. On leaving there, we felt like we had left part of our hearts behind. We arrived at our destination about 3:30 p. m. in the midst of an old fashioned hog killing. I'll say this I've been as far north as Ca., west as far as Wis., but none can compare with the Southern hospitality. There I was introduced to link sausage chittlings and a colored mammy, the mainstay of the family for years helping to rear the children and now the grand children. She scolded, fussed and threatened to spank, no one paid her any mind, more especially the youngster she was wanted to for she knew it was beneath the dignity of her white people to pay any mind to the grumbling of an old colored mammy. Mammy cooked southern dinner I had ever eaten. While Mrs. Runnels and I seated us at our table with the courtly Gerald O'Hara's servant in "Gone With The Wind" to shame. We were served old Holly, with its bright red berries stood out among the other green trees like the red nose of old St. Nick. Pines, Magnolias, Evergreen Oaks, and Bays, a sister of the Magnolias. Acres after acres of those beautiful trees growing wild while we up here have such hard time even getting them to live for us. And ferns almost knee high. On arriving back at Columbus, Hubby and I started on for Alabama: I can't say much so I'll skip it. We played around in the land made famous by "Gone With The Wind" amidst the lovely old southern plantations rolling hills of red earth, brick red when dried, good cotton producing land, also peaches. We moved into Florida, the land of sunshine, what a joke, don't let anyone fool you, it rained almost half the time we were there. Rain or fog like pea soup, but still we had a grand time we went boating at night to see the fish made as they darted about caused by the phosphorous in the water.

river in daylight is equally as beautiful wild flowers blooming ferns as tall as I am and water lilies with their lovely white blooms perfumed the air. But the South in all its beauty did not look half as good to me as my own living room did the Saturday night I arrived home and opened that door, that was the prettiest sight I had ever seen. Spent Sunday with Mr. and Mrs. Raish Jones of Sharpe went to Sunday School with her and met that sweet Nell Wilson whom I hadn't seen for years. Met several more nice ladies whom I had forgotten, had a nice time in all. While we were in the Southland, I asked several people how they felt about the equal rights bill of Truman's. Most of them think there will be a lot of trouble if the bill passes. I'm like them, I do not see why the North don't let them alone with their colored people. They have lived with them for all these years and if they don't understand them, who does?

My deepest sympathy to the ones who lost loved ones while we were gone: Mr. and Mrs. Draffen Schmidt, in the loss of his mother; Ira Ramsey, in the loss of his mother; the John Angle family in the loss of the father; also the Pruitt Brien family in their loss - my heart aches for each of you.

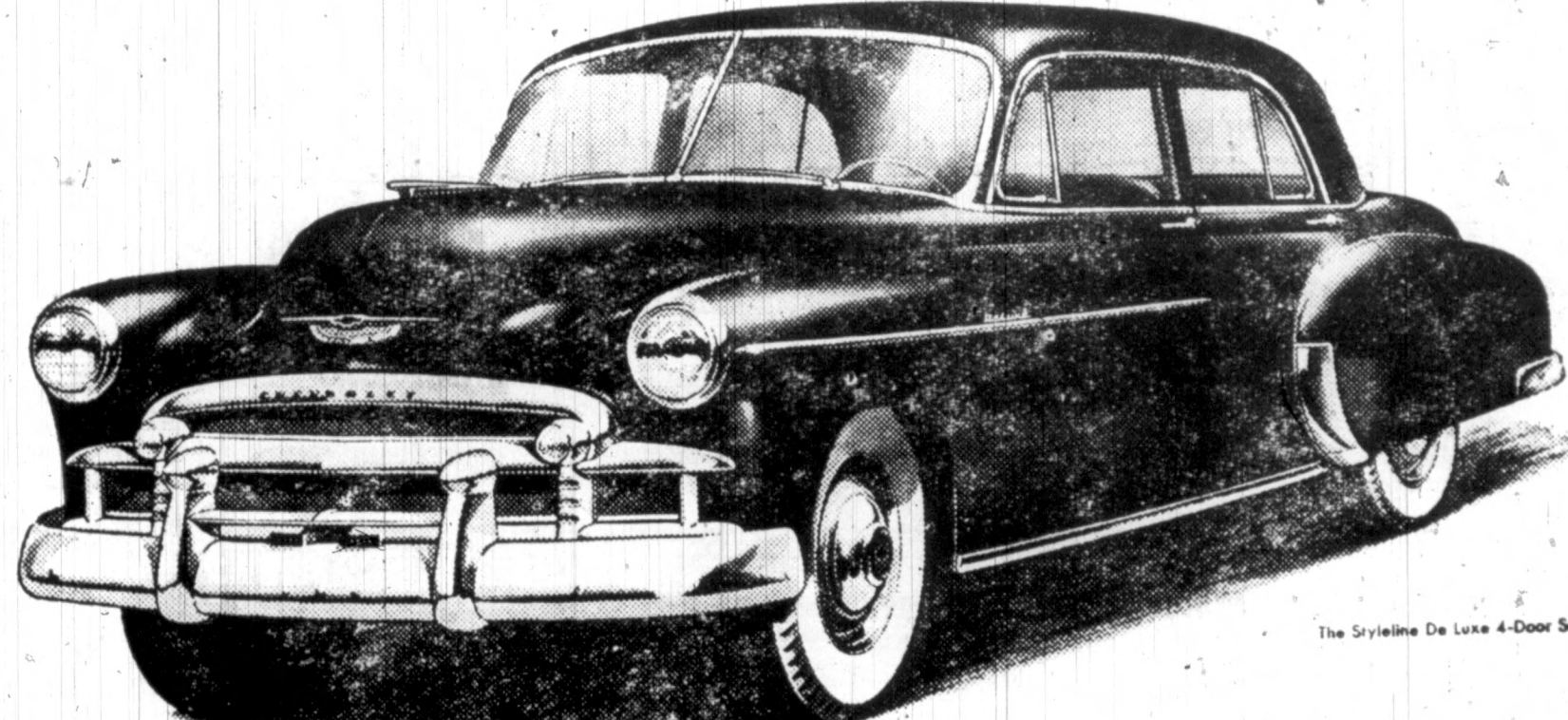
Mr. and Mrs. John Padgett and Mildred, of Frankfort spent the holidays with their mother, Mrs. N. A. Lawrence at Hardin.

USE TRIBUNE CLASSIFIEDS FOR RESULTS

When In Paducah Buy From BEYERS HARDWARE 131 South 3rd Paducah Hardware - Paints - Records - Notions - Wallpaper - YOUR PATRONAGE APPRECIATED

On display Saturday - 1950 CHEVROLET

introducing POWERGLIDE automatic transmission



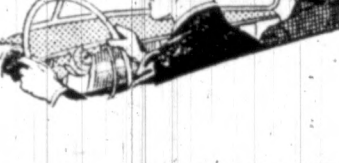
FIRST...and Finest...at Lowest Cost!

Chevrolet for '50 brings you the best of everything at lowest cost... greater beauty... finer performance with economy... outstanding driving ease, comfort and safety! Here, in Chevrolet for '50, are the finest values the leader has ever offered to the motoring public.

Chevrolet - and only Chevrolet - brings you all these major advantages at lowest cost!



NEW TWO-TONE FISHER INTERIORS extra-roomy-extra-luxurious



ONLY LOW-PRICED CAR TO OFFER A CHOICE OF STANDARD OR AUTOMATIC DRIVING THE AUTOMATIC POWER-TEAM* THE STANDARD POWER-TEAM Outstanding for Standard Driving Ease... Performance... and Economy

HIGHLY IMPROVED, MORE POWERFUL VALVE-IN-HEAD ENGINE (with Power-Jet carburetor and larger exhaust valves). The fine standard Chevrolet engine now made even finer... giving more power, more responsive pickup, greater over-all performance... plus the outstanding economy for which Chevrolet has always been noted. THE FAMOUS SILENT SYNCHRO-MESH TRANSMISSION (with Extra-Easy Hand-E-Gearshift). Long recognized, by the automotive engineers and the motoring public alike, as the pattern of smooth, quiet gear transmissions... assuring extremely simple and easy gearshifting... in fact, owners say easiest car operation, next to automatic driving itself.

America's Best Seller CHEVROLET America's Best Buy Phillips Chevrolet Co. 1207 Main Street Benton, Ky.

Such Bargains! All Prices Slashed! 75 White Shirts Nationally Advertised 25 per cent Off STORE manager

CLASSIFIED ADS

NEAR KENTUCKY DAM
Timmons farm on highway 1/2 mile of Dam. 43 acres. Made 65 bu. corn per acre last season. Long highway frontage. Highway 282 will be rebuilt this summer. 4 miles from Painsalt and Pittsburg plants. \$3,000.00 own. Should double your investment in one year on this property.

100 ACRE MARSHALL CO.
Farm, well improved, lays between 282 and Illinois Central R. R. Fine for farming, housing project, or industrial location. \$5,000 down.

101 TOURIST CAMP
Hot and cold running water, cooking facilities both gas and electric; only one mile from the most visited spot in 10 states. R. D. SMITH, Owner must sell at once on account of health. j6-20c.

FOR SALE: 80 acres, new 5 room house, wired for electric stove, all new outside buildings, 1 acre strawberries, tobacco base for burley, air cured dark fired. Close to church and school. Near Briensburg just off Hi-way 68. See J. W. Baker, Benton, Ky., RFD 7. j6-13p.

FOR SALE: Registered OIC gilts, 6 months old. Registered OIC male 1 year old. Registered Poland China gilts, 6 months old. J. B. Gillahan, Gilbertsville Route 1. j6-13p.

FOR SALE: At public auction on Friday, Jan. 13, household goods, including rugs, chairs, tables, sewing machine, ect., at the W. R. Waid home on Benton Rt. 1, near Dogtown. Mrs. W. R. Waid. j6p.

FOR SALE: Restaurant equipment, Burroughs cash register, all kitchen equipment, popcorn machine. Franklin Security Co. Taylor Building, Paducah, Ky. Phone 6222. j6-13c.

FOR SALE: 80 acres, will divide, 2 room house and large tobacco barn. 3.6 dark fired base. Priced to sell. B. K. Powell, Benton Rt. 6. j6-27p.

FOR SALE: 10 1/2 acre farm on U. S. 68, 1 1/2 miles east of Briensburg. Good 6-room house, running water, hot & cold, glassed-in back porch. Brooder house, smoke house, garage and hen house, all in first class condition. Good land, all under cultivation. Full set of horse-drawn farming tools, wagon, ect. Early F. Duin, Benton Route 4. j6-13p.

NOTICE TO HUNTERS: Since having a cow shot and killed on my farm, no further hunting without my permission will be allowed. Leon Byers, Benton Kentucky. j6-13p.

FOR RENT: 5-room house, full size basement, REA lights, good garden. See Leon Byers, Benton Hotel, Benton, Ky., Phone 2441. j6-13p.

Liquid meat smoke, Skipper compound, borax and Black pepper for your meat at Heath Hardware & Furniture Co.

You don't have to leave Benton to get Lower Prices and accommodations when you want furniture, electric, oil and wood ranges, heating stoves and electric washing machines. See Heath Hdwe. & Furn. Co. First. Low Prices on 9 x 12 - 12 x 12 & 12 x 15 Rugs at Heath Hardware and Furniture Co.



REGISTERED SPOTTED POLAND CHINA BOB
Any size. Good enough for the biggest breeder, good enough for the smallest farmer. For large litters of growing pigs try a "SPOT" RAY HALL Calvert City

TALK OF THE TOWN
VALUES

Riley's Mid-Winter SALE
NOW GOING ON

- An Assortment of Gingham & Chambrays
- Formerly \$1.00, NOW 79c
- Boys' and Men's All Wool Sports Shirts \$2.98 - \$3.49
- Boys' Cotton Flannel Shirts \$1.15 - \$1.79
- All Wool & Rayon Piece Goods reduced . . . 54 in. wide
Formerly 1.98 & 2.98 Yd., now \$1.49
Formerly 2.98 Yd., now \$1.89
- Mill run towels formerly 79c, Now 59c
- All Ladies' Dresses Reduced . . . \$3.98, \$5, \$6 & up
- Ladies' Hats 1-2 off. Ladies' Rayon Panties 3 pr. \$1
- Outing Flannel, fancy and plain 29c
- Men's Cotton and Wool Sweaters \$1.98, \$2.49
- Boys' Winter Underwear 1.19
- Elastic Waist Overall Pants, size 1-6 98c
- Good Weight 36 inch Domestic yd. 20c
- Cotton Bedspreads, 84 x 105 \$3.98
- Foxcraft Sheets, 81 x 99 \$1.88

MANY OTHER WINTER ITEMS REDUCED.

RILEY'S
Department Store

BENTON
THEATRE
GUIDE

BENTON, KENTUCKY MS 817

2 Shows Daily, 7:00 & 9:00
Sunday Shows, 1:30, 3:30 & 5:30
Saturday continuous Showing After 11:00 A. M.

Thursday, Jan. 5-6, Friday

LOOK OUT, LADD!
ALAN LADD - DONNA DORNIA
Chicago Deadline
JUNE HAYOC
Sheppard Strudwick

Plus Color Cartoon and Sports-Parade

Plus Chapter 5 "Batman and Robin"

Sunday, Jan. 8-9, Monday

RIPPED FROM REALITY - FORBIDDEN LOVE!
The Red Danube
Water PIDGEON - Ethel BARRYMORE - Peter LAWFORD
Janet LEIGH - Angela LANSBURY

Plus Color Cartoon and Popular Science

Tuesday, Jan. 10-11, Wednesday

Conflict of YOUTH vs. AGE!
CLAUDE RAINS
Wanda HENDRIX
Macdonald CAREY

Plus Color Cartoon and Screen Snapshots

Thursday, Jan. 12-13, Friday

The Greatest Discovery Since Bubble Gum
PAUL DOUGLAS
LINDA DARNELL
CELESTE HOLM

Everybody DOES IT
CHARLES COBURN
The cartoon for the picture

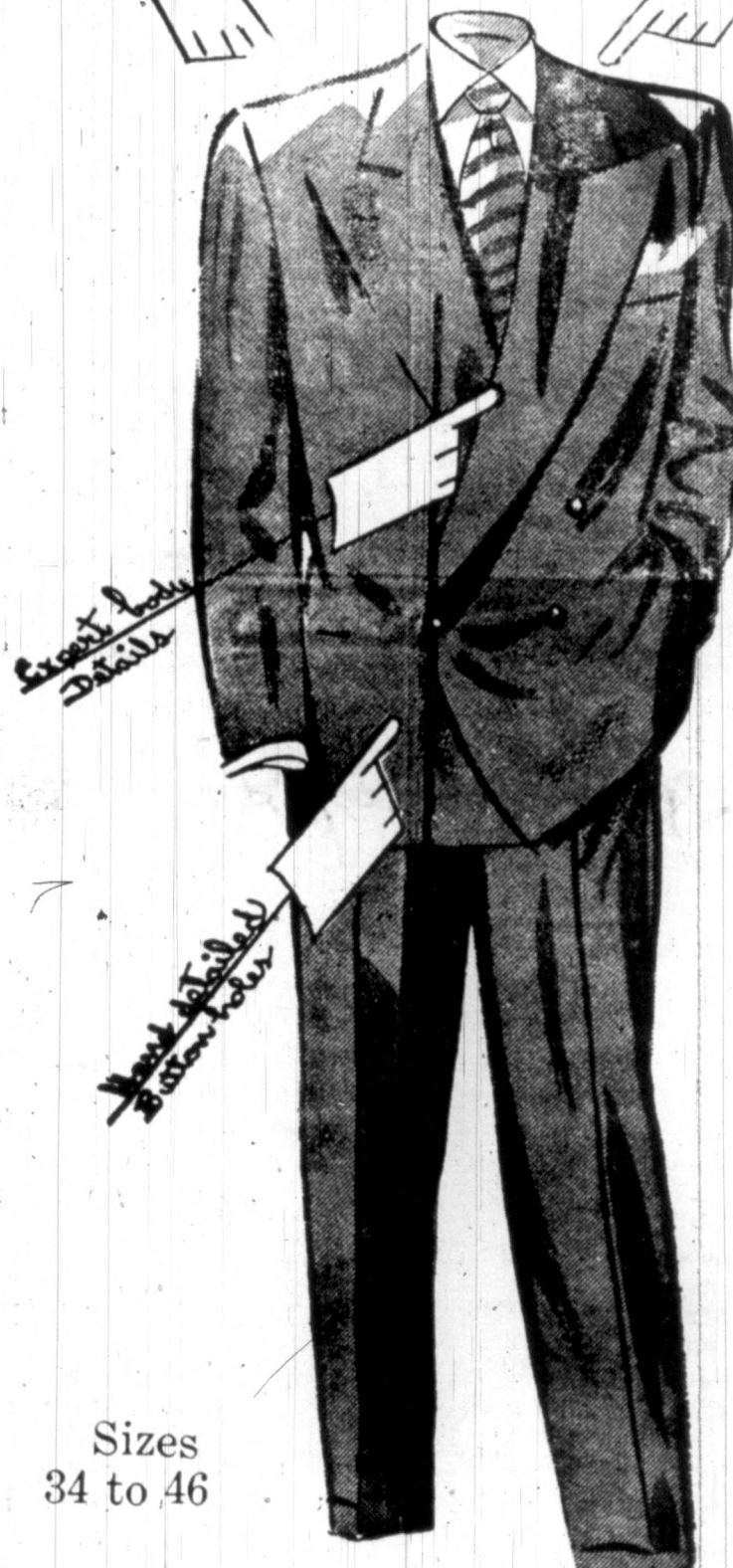
Plus Color Cartoon and Sports Parade

SALE

BIGGEST SAVING SINCE JOHNNIE PUT ON HIS O.D.s

- * Entire Stock on the Block
 - * All Styles . . . All Fabrics
 - * Double Breasteds
 - * Single Breasteds
 - * Blues, Browns, Greys
- In all Wool Suits

MEN'S SUITS



Yes, men, this is the biggest thing we've had since the beginning of the last war . . . it's a must sale for us because our spring purchases are piling in. Jump on the band wagon and save! No charge for alterations!

- Regular \$29.95 & \$32.50
SUITS
\$27
- Regular \$35.00 - \$37.50 - \$39.95
SUITS
\$33
- * All Wool Gabardines
 - * All Wool Worsteds
 - * Checks, Stripes, Plaids
 - * All Famous Brands

National Stores
CORPORATION

Benton Kentucky

Entertains Friends

Mr. and Mrs. Elmer Brien entertained a number of friends with a supper at their home on Benton Route 1, Monday night.

Those present were: Mamie Binkley and son, Jamie Castleberry, R. W. Halton, Joe Tom Halton, Joe Halton, Norman Bolton, Pearl Bolton, Fay Melton, Alva Green, Lola Green, Dixie Green, Anna Lou Green, Weida Green, Jerry Green, James 'Buck' Brien, Leslie Lou Brien, Arvita Brien, Glennie Brien, Barbara Nell Brien.

Everyone reported a good time.

Announce New Agency

Bill Pryor, operator of the Spillway has announced that he has the agency for the famous Sterile Air Vaporizer.

This great discovery is reputed to give you germ-less air in your home or place of business. The company suggests using them to stop dangerous diseases and strength-sapping colds at their source.

After Christmas Clearance at The Benton Dress Shop

<p>COATS FULL LENGTH AND SHORTIES IN DRESS AND SPORT COATS—BROADCLOTHS, COVERTS AND TWEEDS.</p> <p>\$79.95 values now \$59.00 65.00 values now 45.00 55.00 values now 37.50 49.50 values now 35.00</p>	<p>DRESSES 3 Big Groups</p> <p>TISSUE FAILLE, GABARDINES, WOOLS, CREPES, in bright colors, navys, and blacks.</p> <p>MANY HOLIDAY DRESSES. Values Up To \$27.50</p>	<p>SUITS BEAUTIFUL ALL WOOL GABARDINES AND SHARKSKIN TWEEDS.</p> <p>\$75.00 values now \$59.00 65.00 values now 45.00 55.00 values now 37.50 49.50 values now 35.00</p>
<p>LINGERIE SPECIALS ROBES, One Group, Values to \$24.50 NOW 1/2 PRICE</p> <p>SLIPS Broken Lots and Sizes GREATLY REDUCED</p> <p>BRASSIERES ODDS AND ENDS NOW 1/2 PRICE</p> <p>BLOUSES ONE SELECTED GROUP NOW 1/2 PRICE</p>	<p>GROUP BETTER DRESSES</p> <p>We have taken our better dresses and grouped them for real savings to you. You'll find many smart styles from which to choose—Nationally advertised brands such as Paula Brooks, LeVines, Bloomfields, Carlyles and Doris Dodsons.</p> <p>\$35.00 values now \$25.00 29.95 values now 22.50 27.50 values now 20.00 22.50 values now 15.00 19.95 values now 14.00 16.95 values now 12.00</p>	<p>HATS Up to \$5.95 values now \$2.00 Up to 9.95 values now 4.00 Up to 14.95 values now 6.00</p> <p>SKIRTS Values up to \$10.95 \$4.00 \$6.00</p> <p>MATERNITY DRESSES STYLED BY DORIS DODSON Values up to \$16.95 \$5.00 \$8.00</p> <p>HANDKERCHIEFS White and pastels, florals, bastistes and embroidered linens SPECIAL AT 1/2 PRICE</p>

ALL SALES FINAL

NO EXCHANGES

ALL SALES CASH

CALVERT

Thursday - Friday

JOHN GARFIELD
PUTS HIS BODY AND SOUL INTO
FORCE OF EVIL

THEODORA GOMEZ
MABLE WINDSOR
BEATRICE PEARSON

GENUINE ARMY SURPLUS SHOES 4-BUCKLE MEN'S
Same in Women's \$1.65 - \$2.00

FINEST LEATHER ENGINEERS' BOOTS
IBAT BOOTS
RK SHOES

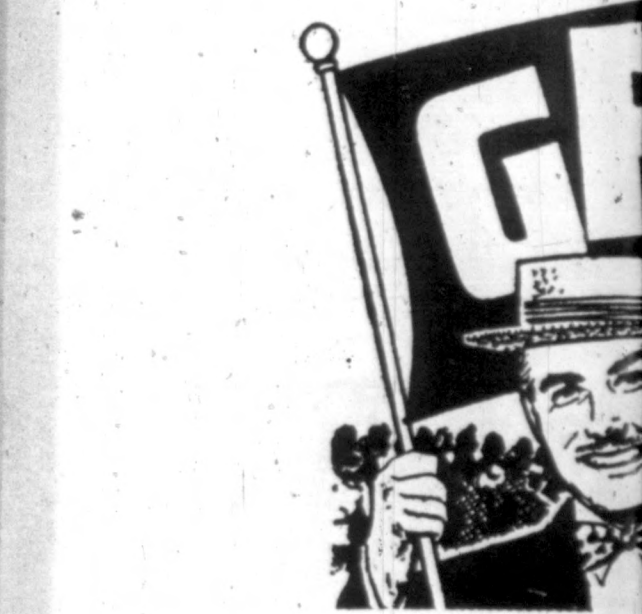
WOOL O. D. SHIRTS
WOOL LINED FIELD JACKETS
ITE ORDNANCE COVERALLS

IOUS CUSHION SOLE SOX
or Sox as Low as

ARMY SURPLUS TARP
TARPAULIN TREATING COMPOUND

SPACE HEATERS, 100 lbs.
A Warm Morning Every Morning
PLUS COAL RANGES

COUNTRY BOY STORES



GROCERIES

FRUITS

VEGETABLES

Just
C
8th & Main Sts.

Calvert Theatre

Thursday - Friday
Gene's Poundin' Leather and Pourin' Lead
 A show-down battle with battle-battered lead!

Saturday
Gene's Poundin' Leather and Pourin' Lead
 A show-down battle with battle-battered lead!

Gene's Poundin' Leather and Pourin' Lead
 A show-down battle with battle-battered lead!

Gene's Poundin' Leather and Pourin' Lead
 A show-down battle with battle-battered lead!

Sunday - Monday

YOUR HEART WILL FIND WITH EVERY HOOF-BEAT!
The Great DAN PATCH
 DONNIS O'KEEFE GAR RUSSELL

Tuesday - Wednesday

EDDY ARNOLD
 THE TENNESSEE OF COMEDY

FEUDIN' RHYTHM
 THE GREAT STORY OF BREXIDALL'S GREATNESS

Thursday - Friday

JAMES STEWART-ALLYSON
The Stratton Story
 FRANK MORGAN-JAMES MOORE-HEAD BILL WILLIAMS

CARD OF THANKS

WOOD: We take this method of thanking our friends and neighbors for their kindness during this recent illness and death of our dear loved one, Mrs. Julia Wood. We appreciate the lovely floral offerings, the beautiful words spoken by the pastor, the Rev. Freeman Good, and the splendid services rendered by the Filbeck and Cann Funeral establishment. Also we thank Dr.

Pool for the interest he manifested. May God bless each and every one.

The Family.
 I wish to take this method of expressing my heartfelt appreciation and thanks to my many friends and relatives for their kindness in sending me so many nice presents for Christmas while a patient at Pine Breeze Sanatorium. I want to wish one and all a Happy and Prosperous New Year.

Mrs. Lalah (Sirex) Cawthorn,

Pine Breeze San., Chattanooga 5, Tenn. 1c.
 SMITH: We wish to take this means of expressing our heartfelt thanks and appreciation to all those who by words or deeds helped to lighten our burden at the time of our great sorrow, in the loss of our dear one, Ray A. Smith.
 The Family.

GREEN: We wish to thank our friends and neighbors for their kindness and sympathy shown in the illness and death of our husband and father, John A. Green, the beautiful floral offerings and food sent. Also the ministers and funeral directors and family physician.

Mrs. John A. Green
 Mrs. J. Govie Smith
 Mrs. Luther Draffen.

STRUCK BY CAR

Mrs. E. S. Hinkle, mother of Mrs. T. G. Harris of Calvert City, was seriously injured when struck by a hit and run driver Christmas Eve at Tulsa, Oklahoma. Mrs. Harris reports that her mother is critically injured and hospital attaches will give her little hope.

GENUINE ARMY SURPLUS
 SHOES 4-BUCKLE MEN'S \$2.45 - \$2.95
 Same in Women's \$1.65 - \$2.00
 BEST LEATHER ENGINEERS' BOOTS \$1.95
 CAT BOOTS \$4.95 - \$6.95
 SHOES \$1.95 - \$3.95

WOOL O. D. SHIRTS \$2.75 - \$3.25
 WOOL LINED FIELD JACKETS \$3.75
 ORDNANCE COVERALLS \$1.50

DUS CUSHION SOLE SOX 25c
 Sox as Low as \$1.00 doz.

ARMY SURPLUS TARPULINS
 TARPULIN TREATING COMPOUND, 10 lb. \$125

SPACE HEATERS, 100 lbs. \$24.95
 A Warm Morning Every Morning

PLUS COAL RANGES \$12.50 - \$14.95

WAYS TO CHECK WITH
 The Largest Assortment of Army Surplus in the Middle West

COUNTRY BOY STORES
 EVERY DAY

CONGRATULATIONS TO C. C. HUNT ON THE OPENING SATURDAY JANUARY 7 OF HIS NEW AND MODERN Drive-In-Market HART'S BAKERY

KINNEY NOW HAS THE NATION'S OUTSTANDING PUMPS AND WATER SYSTEMS Complete New Line Myers Pumps

To cover any depth well
 Come in and let us help you figure
 Your needs for hot and cold
 Running Water.

INSTALL A MYERS PUMP
 AND BE SURE--NOTHING TAKES THE PLACE OF THE BEST.

KINNEY
 Tractor & Appl. Co.
 Benton Kentucky

GRAND OPENING

C. C. HUNT'S NEW DRIVE-IN MARKET
SATURDAY, January 7th 1950
 Open 9A.M. Close 7P.M Free Coffee and Donuts Throughout the Day
 Self Service---All New Modern Equipment

Plenty of Free Parking Space For Everyone
 Just Moved Across Main St. From old Location

C. C. Hunt's Drive-In Market
 Serving You For 22 Years At Old Location Benton Ky.

GROCERIES
FRUITS
VEGETABLES

MEATS
FROZEN FOODS
BAKERY

WE ARE PROUD TO OFFER YOU THE FAMOUS LINE OF **PICSWEET FROZEN FOODS!**

VALUABLE DOOR PRIZES
 A BIG BASKET FULL OF CHOICE GROCERIES ONCE EVERY HOUR THROUGHOUT OUR BIG OPENING DAY.

REGISTERED SPOTS
 POLAND CHINA
 Any size. Good enough
 the biggest breeder.
 enough for the smallest
 mer. For arge litters of
 growing pigs try a
RAY HALL
 Calvert City

NCE JOHNNIE

MEN'S SUITS

es, men, this is the b
 est thing we've had sin
 the beginning of the
 war... it's a must sale
 as; because our spr
 purchases are piling
 Jump on the band wag
 and save! No charge
 alterations!

Regular \$29.95 & \$32.50
SUITS \$27

Regular \$35.00 - \$37.50 - \$39.50
SUITS \$33

All Wool Gabardines
 All Wool Worsteds
 Checks, Stripes, Pla
 All Famous Brands

Stores
 Kentucky

hop

TS
 L GABARDINES AND

now \$59.00
 now 45.00
 now 37.50
 now 35.00

ATS
 values now \$2.00
 values now 4.00
 values now 6.00

RTS
 up to \$10.95
 \$6.00

Y DRESSES
 DORIS DODSON
 up to \$16.95

ERCHIEFS
 orais, bastistes and em

AT 1/2 PRICE

ALL SALES CAS

CARD OF THANKS

We wish to express our sincere thanks and appreciation to our many friends and relatives who were mindful of us during the holiday season. We received many words of encouragement and acts of kindness for which we're very grateful. To write a personal letter of thanks to

each one would be impossible, so may we say thanks a lot to you, and may you have a very prosperous New Year. Mr. and Mrs. Lawrence Puckett and Children.

TRIBUNE CLASSIFIEDS THE MARKET PLACE OF MARSHALL COUNTY

Money to Loan

on anything of Value. Unredeemed Pledges for sale. Diamonds, Watches, Pistols, Luggage and Radios Watch Repairing—All Work Guaranteed

Home Finance Co.

See Us Before You Buy. Paducah 210 B'way Phone 381

INSURANCE OF ALL KINDS

MORGAN, TREVATHAN, AND GUNN Insurance Agency

INSURE NOW—TOMORROW MAY BE TOO LATE PHONE 2151 BENTON, KY.

Complete Optical Service



Glasses Fitted and Repaired

O'Neil Thompson

OPTOMETRIST Citizens Bank Bldg. Paducah, Ky. Phone 238

OBITUARY

John A. Green

Funeral services were held Sunday afternoon for John A. Green, 75, at the Calvert City Baptist Church with the Rev. L. R. Riley, the Rev. J. F. Young and the Rev. Gaylon Hargrove officiating. Interment was made in the Calvert City cemetery. Mr. Green was a member of the Calvert City church and the Calvert City Masonic Lodge No. 543.

Surviving besides his widow are two daughters, Mrs. G. L. Draffen and Mrs. J. Govie Smith, of Detroit; two sisters, Mrs. Addie Wallace and Mrs. Nannie Corsey, of Paducah; four grandchildren, James L. Draffen, Calvert City, Mrs. P. L. Howard, Louisville, Charles and Martha Smith, of Detroit; two great-grandchildren, Jim and John Draffen, Calvert City.

Active pallbearers were Boyce Karnes, H. H. Kunackee, Raymond Butler, Illof Key, Robbie Hoover, and Will Dovie. Honorary pallbearers were Marshall Stice, Joe Drexler, Frank Kennedy, Samuel King, Otis Dismore, Odie Oakley, Lawrence Cornwell, Lex Hul-en, Bob Holland and Owen Davis. Filbeck-Cann Funeral Home had charge of the arrangements.

Flavor-kist SALTINES NEW 4-in-1 PACK 29c DAMPNES CAN'T TOUCH THEM

JACKSON & SON Phone 2851 Free Delivery

TOP GRAIN BOSCA QUALITY Built

Brief Cases



BEAUTIFUL • ROOMY • STURDY THREE SIZES • MANY STYLES Top Grain Cowhide, Plush, Tanned Hide and Black Sheep

WILSON'S Book Store Telephone 3221 Paducah Ky

READ THE TRIBUNE CLASSIFIED ADS

LINN

Offers complete funeral service in every price range. Inquire and be convinced. Ambulance equipped with oxygen, available day and night.

LINN FUNERAL HOME

807 North Main Phone 2921

Watch and Clock Repair

VERLIE REEDER JEWELER

Line of Watches, Watch-bands, etc. LOCATED OVER CRAWFORD-FERGUSON STORE BENTON KENTUCKY

SATURDAYS OFF

From Now on we Will Be Closed All Day On Saturday Unless Business Warrants Otherwise

We appreciate your patronage and want to accomodate you every way we possibly can, but we shall be unable to make deliveries on SATURDAYS unless the order is placed before closing time on FRIDAY.

HOURS 7 A. M. to 4 P. M. Mon. Thru Fri.

Long Concrete Co.

Benton Ky.

SHOP

Parks-Belk Co.

The Value Center of

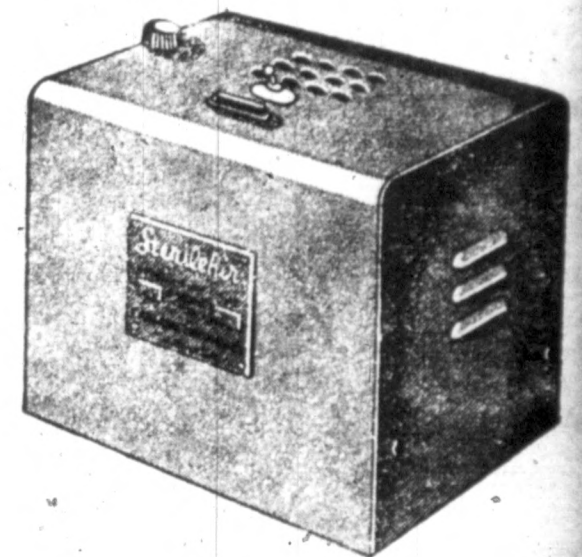
West Kentu

South Side Square.

Mayfield

NOW WE CAN HELP PREVENT COLDS

(for further information read April, 1948 Reader's Digest)



Try Triethylene Glycol, the new wonder chemical

The Sterilair Vaporizer represents a great step taken to control the germs, virus and bacteria that cause most of the following diseases: Colds, Flu, Measles, Strep throat, Acute tonsillitis, sinusitis, and many others. Economical to Own and Operate. Homes, Factories, Offices, Theatres, Public Buildings.

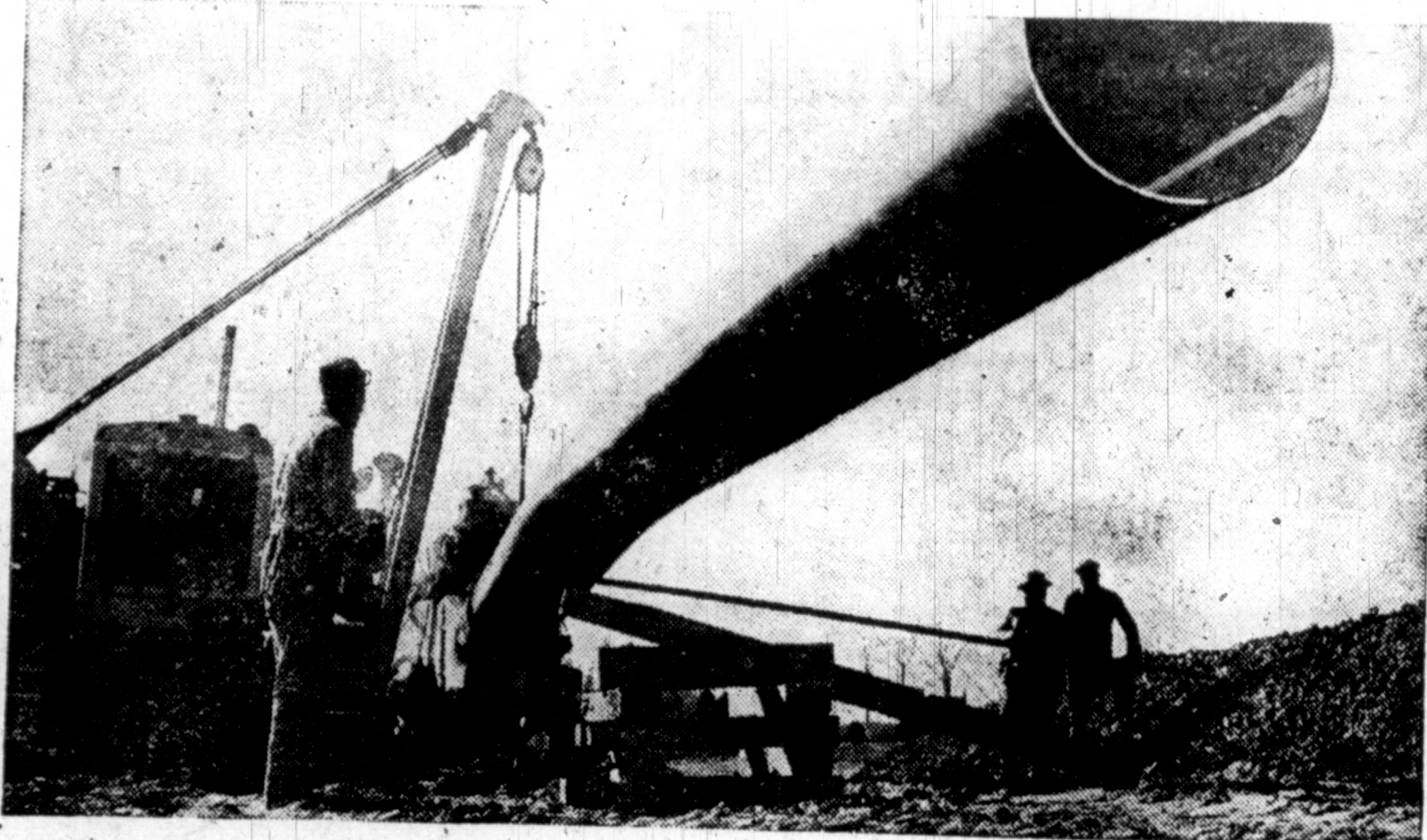
FOR FURTHER INFORMATION & DEMONSTRATION

STIRLE AIR DISTRIBUTOR

POST OFFICE BOX 803, BENTON, KENTUCKY

READ THE CLASSIFIED ADS

NATURAL GAS STARTS TO FLOW THROUGH NEW TEXAS GAS LINE



For the men working above, the biggest job of laying the pipe line is over. Last week, in time for Christmas, Texas Gas Transmission's natural gas pipe line that passes near here went into preliminary operation.

This is the line, 26-inches in diameter and over 800 miles long, that was begun last May. In planning the project it was determined that, despite obstacles, the new artery would go into service for this winter's coldest weather.

Looking back, the pipeliners

above remember the obstacles well. In October, rain caused the loss of half the working days in the month. Crews had to lay pipe through miles of rock and miles of swamp. Fifteen rivers that had to be crossed each presented its own problems in engineering and construction.

Despite this, more men and more machines were moved in to do the job, and the line was built.

Although the pipe line is in the ground, the job has not ended. Additional compressor stations will be erected in 1950. And for

years and years to come the pipe line system, from Texas to Ohio, will remain under constant maintenance and supervision.

Thus, the new pipeline takes its place in our nation's vital chain of 250,000 miles of underground lines carrying natural gas.

As operations begin, Texas Gas wants communities along the pipe line to know it appreciates the help they have given in many ways to speed the construction program. Having met you, the Company looks forward to becoming a good neighbor.

Memo to citizens of Marshall County:

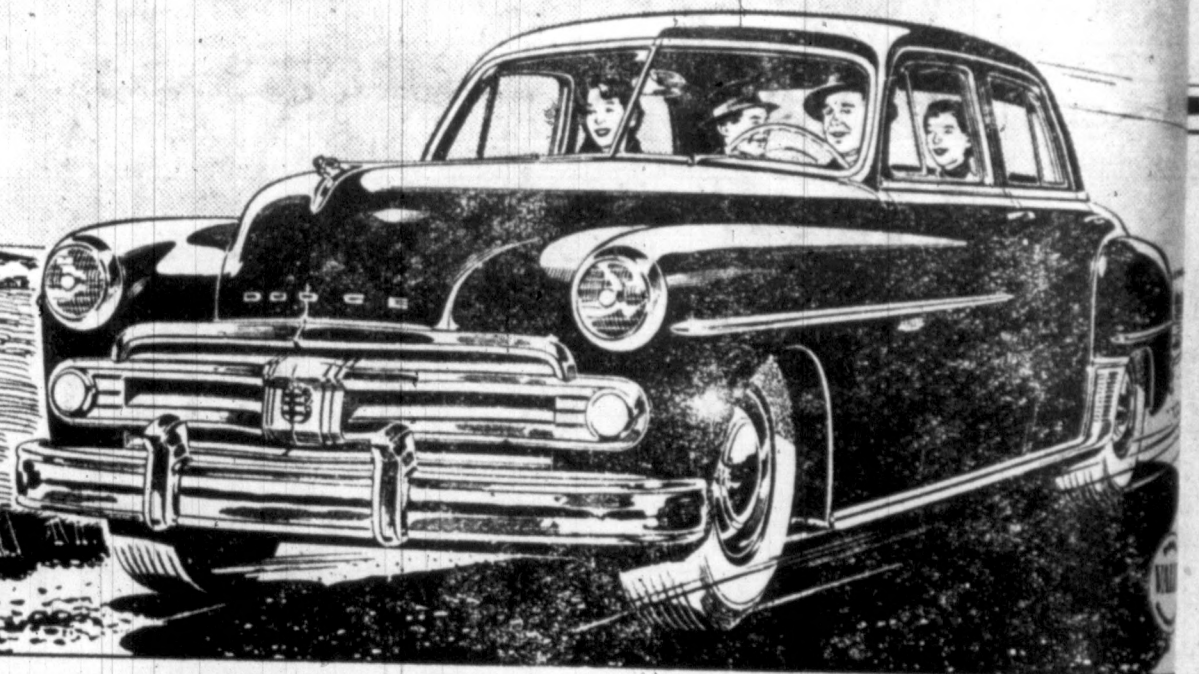
Attached information from our company newspaper, PIPE-LINE PROGRESS, is printed to give you news about our new pipe line through your area and to inform you of activities of our natural gas transmission system. You may receive regular copies of PIPELINE PROGRESS by writing to:



TEXAS GAS TRANSMISSION CORPORATION

P. O. BOX 577, OWENSBORO, KY.

COMING OR GOING...



SMARTER THAN EVER...

AGAIN THIS YEAR THE BIG VALUE IS DODGE

You could pay a thousand dollars more and still not get all the new beauty... extra room... famous ruggedness of this great new Dodge

HERE'S BIGGER VALUE in smart new styling... in ease of handling... in comfort... in sound engineering. And in actual dollars and cents, too, because the big new Dodge costs just a few dollars more than the lowest-priced cars.

Despite its smart, low, graceful lines OUTSIDE, Dodge is higher, wider, longer on the INSIDE to give you the roominess that spells solid comfort... that means extra room for your head, your legs. Less overhang front and rear makes parking and garaging simpler, easier.

See this great new Dodge. Sample the flashing performance of the powerful high-compression "Get-away" Engine... the smoothness of Dodge Fluid Drive. Come in today.



NEW BIGGER VALUE

DODGE

Just a few dollars more than the lowest-priced cars!

NOW ON DISPLAY AT THE

BENTON AUTO EXCHANGE

Also will show the new Plymouth "The American Beauty" on Thursday, January 12, 1950.

STOREHOUSE

Within the cones and the speeds for forests that willations of Americans. In the forests have their beginning

However these seeds may will sow most of them, some operated nurseries—they will ing young trees producing requirements.

Nature provides the seed the young trees rests with her is to reach maturity, first woods. Proper management duce high-quality trees. The faster if their future is planned

Trees are a crop, planted storehouse. The forest industry are planning continuous prod aging all woods owners of A

Treas

Benton

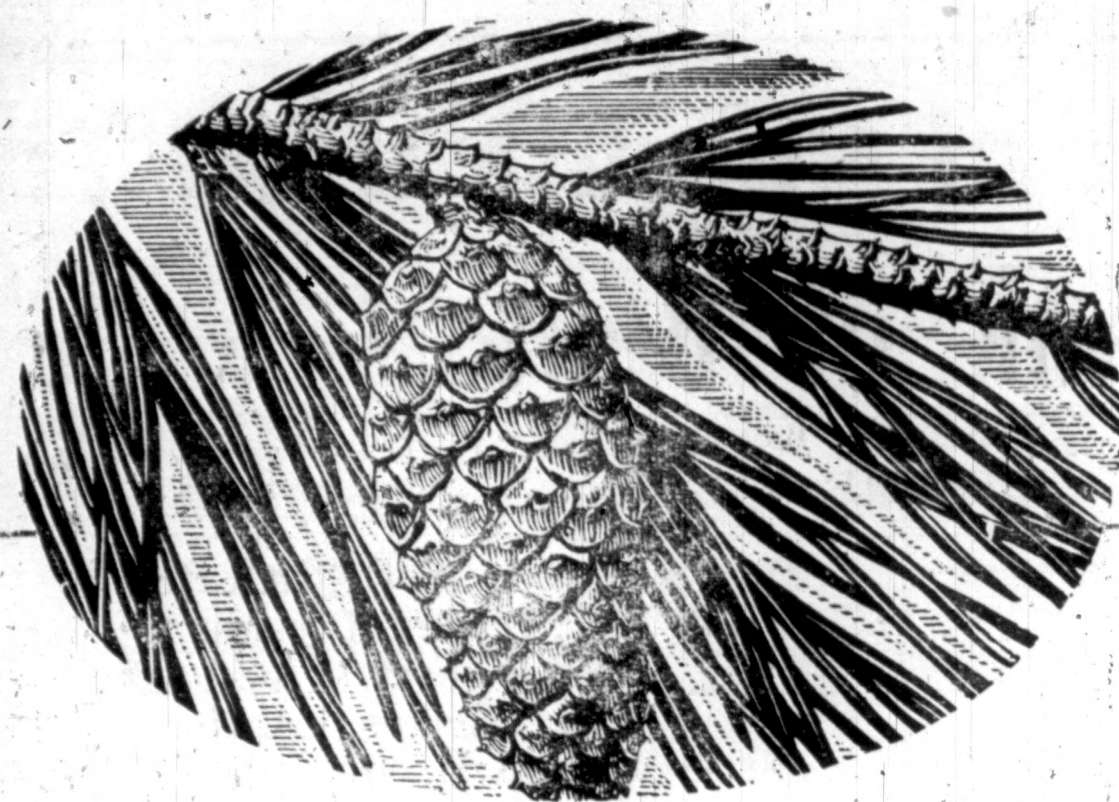
The S That Ser

OFFIC

R. E. Foust, Chair B. L. Trevathan, Tullus Black, V H. E. Morgan, C E. L. Starke, Ass Clois Holmes, Ass Margaret Pace, A J. M. Dotson, Be Betty Black, Sec

DIRECT

R. E. Foust, Tullus Black, B. L. Trevathan, H. E. Morgan, W. F. Rob J. C. Ho E. T. G. T J.



STOREHOUSE FOR TOMORROW

Within the cones and husks of our mature trees are the seeds for forests that will supply wood to future generations of Americans. In these natural storehouses, our forests have their beginning and their perpetuation.

However these seeds may be planted—while nature will sow most of them, some will germinate in scientifically operated nurseries—they will become vigorously growing young trees producing new wood for our many requirements.

Nature provides the seeds for our new forests, but much of the responsibility for growth and protection of the young trees rests with humans. If our growing timber is to reach maturity, fires must be kept out of the woods. Proper management of our woodlands produce high-quality trees. The young seedlings will grow faster if their future is planned with good forest practices.

Trees are a crop, planted with the seeds from nature's storehouse. The forest industries, which depend on wood, are planning continuous production of trees, and encouraging all woods owners of America to do the same.



Treas Lumber Co.

Benton

Kentucky

BIGGER BETTER BARGAINS...

Classified Ads

EVERY AD A VALUE OPPORTUNITY

For Sale

Two Tablets for GROWTH control. Use Dr. Salisbury's REN-O-SAL for both these purposes. Easy-to-use drinking water medicine. Economical, too. Ask us for Dr. Salisbury's REN-O-SAL. Nelson Drug Co.

Real Estate Buys

SPECIAL
*One 4-room house, full basement, 2 acres ground, shower bath, water in house. On West 12th Street. \$4,750.

RILEY, ELY AND DARNALL

Other vacant lots, houses and lake Properties
Benton Kentucky

FOR SALE: Good used kerosene and electric refrigerators, washers and kerosene ranges priced from \$35 up, all guaranteed. Kinney Tractor and Appliance Company. 17rts

FOR SALE: House & Lot, 525 W. 12th. 3 rooms & bath, with built-in cabinet, electric hot water heater, half basement, with coal furnace. Lot 75x200. Call \$622. d23-113p

FOR SALE: Model A Ford coupe, 1931 model, first class condition. 5 good tires, new rings, new valves. W. A. Bowden, Benton Rt. 3. d16rts

HOUSE AND LOT for sale: 6-rooms and bath, downstairs; 1 room completed upstairs, with three outbuildings. Size of lot 50 x 150. See James Lassiter, 705 Olive, Benton. n11-17p

FOR SALE: 1942 Chevrolet, Buck Brien, Benton, Ky. n11rts

FOR SALE: Warm Air Heater 75 lb. capacity, used one winter. See Travis Ethridge, Telephone 4777, Benton Route 1. rts

PIGS FOR SALE: 8 weaning white pigs, 8 weeks old. Mrs. Annie Nelson, Benton Rt. 2.

FOR SALE: 65 acre farm on rural route near a store and school, outbuildings, tobacco barn, everlasting spring, 8-room house with electricity, 5 rooms down, 3 up. Gillard Creason, Benton Route 2. Itc.

VISIT OUR
New F. H. A. MODEL HOME
Now Open For Inspection At
Calvert City, Ky.

Living Room
2 and 3 Bedrooms
Kitchen
Built-in cabinets, and double compartment sinks
Complete modern bath
Lots of Closets
Utility Room
Large Porch
Oil Heated
Landscape Lot 80x125'
Small Down payment
Monthly payments only \$39.95 including Interest, Taxes & Insurance
Call or Write
Duckett and Arnold

FOR SALE

130 acre farm, 60 acres for cultivation, balance in pasture and young timber. 4-room house and barn and other outbuildings. Plenty water for livestock. The house in good shape. Wired for electricity and telephone service. Located on highway 95, 18 miles to Paducah, 10 miles to Benton.

C. E. Atnip

Calvert City, Ky. 50-d23rts

PIANOS: 5 slightly used spinets and consoles, \$395, with bench. Several good used pianos, medium sized, \$145 up. New Spinnet pianos \$465 up, with bench. We deliver free anywhere. Harry Edwards, South 6th Street, in front of court house, Paducah, Kentucky. d2rts.

Flavor-Kist SALTINES
NEW 4-in-1 PACK 29c
DAMPNESS CAN'T TOUCH THEM

MYERS & ELKINS
Phone 2402 Benton, Ky

OTHER CLASSIFIED ADS
Continued Back Page

For Rent

FOR RENT: Front office building, call at Harvey's Cafe Jel0rts

FOR RENT: Tourists rooms over Harvey's Cafe. rts

FOR RENT: Upstairs apartment, no small children. Bob Treas Long, 1318 Poplar Street, Benton, Ky. j6rts

Services

AUTOMOBILE AUCTION EVERY MONDAY 11 o'clock
Everybody Can Sell Only Dealers Can Buy No Charge to Dealers To Register.
To Individuals \$3.00 to Register A \$10.00 Fee for Selling
FRED BROWN AUTO AUCTION COMPANY
2240-46 Bridge Street. Phone 4843W or 193

Paducah Kentucky
The Mayfield Remarking Co will pick up your dead animal FREE. Phone collect to Walker-Cream Station in Benton Telephone 2041. n1rts.

BABY SITTING: Plenty of experience with my own and others. Mary Green of North Church Grove. m20rts.

RADIO REPAIRING

Tubes Checked Free NO SERVICE CHARGES One year written guarantee on all parts—90 days on tubes. AM-FM Phonographs P. A. Systems promptly serviced. Located in the trade circle directly back of Thompson's Mill. "Look For The Trailer" Radio Service Center Operated by Donald Travis j6-13c

NOTICE

All persons having any claim against the estate of T. T. Waid please file same with me on or before Jan. 15, 1950 or forever be barred. Also all persons indebted to above estate, please make settlement on or before Jan. 15, 1950.

Prentice Fisher, Admr. T. T. Waid Est. d23-j6p.

Miscellaneous

NOTICE HUNTERS: No hunting on our property without permission. Carl Turner, W. L. Frazer, Louis Alcock, and Margaret Foust. On Access Highway 3 mi. south of Gilbertsville, 25 n18rts.

WANTED

Will pay up to 50c per pound cash for nice wood smoked country hams. No liquid smoked or painted hams please. Bring them to Lee's Service Station. Hardin, Ky. j6rts

OTHER CLASSIFIED ADS

ON PRECEDING PAGE

Just Received

Hobby Kits, airplane, auto and modeling. Ideal gifts. Many other new and different gift items. All inexpensive.

THE LOOM ROOM



BARNETT
Electric Refrigerator Service
Highway 98 at 95 Hardin Ky.



BANK OF MARSHALL COUNTY
Member F. D. I. C.
Benton Kentucky

The Bank of Marshall County Presents... A \$2,485,138.25 STATEMENT

Record of Condition on December 31, 1949

"A Good Bank in a Good Town in a Good County"

The Staff That Serves You

OFFICERS:
R. E. Foust, Chairman of Board
E. L. Trevathan, President
Tullus Black, Vice-President
H. E. Morgan, Cashier
E. L. Starks, Asst. Cashier
Clois Holmes, Asst. Cashier
Margaret Pace, Asst. Cashier
J. M. Dotson, Bookkeeper
Betty Black, Secretary

DIRECTORS:
R. E. Foust
Tullus Black
E. L. Trevathan
H. E. Morgan
W. F. Roberts
J. C. Houser
E. T. Inman
G. T. Chester
J. T. Kinney

The figures of our statement above present their own evidence of the strength of this institution and its careful, capable management. We enter the new year in splendid condition, with the utmost confidence in our ability to serve and safeguard your interests. You may count upon our entire willingness to cooperate with you at all times.

The regular semi-annual dividend was this day declared out of the earnings of the past six months.

H. E. Morgan, Cashier.

Bank of Marshall County

BENTON, KENTUCKY

Member Federal Deposit Insurance Corporation

Resources

U. S. Government Bonds	\$967,740.00
Other Bonds	26,000.00
Loans and Discounts	1,246,467.07
F. H. A. Loans	30,746.32
Banking House	1.00
Furniture and Fixtures	1.00
Other Resources	1,000.00
Cash on Hand and Due from Banks	213,182.86
TOTAL	\$2,485,138.25

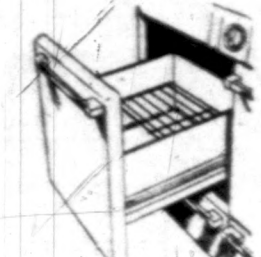
Liabilities

Capital Stock	50,000.00
Surplus	50,000.00
Undivided Profits	50,000.00
Reserves	17,726.47
DEPOSITS	2,317,411.78
TOTAL	\$2,485,138.25

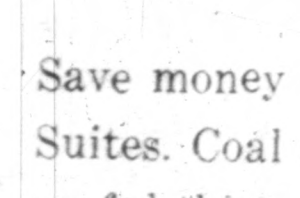
The **NEWEST** in Electric Cooking
The All-New... All-White
Perfection
ELECTRIC RANGE



ALL-WHITE OVEN
Porcelain-enamelled and brightly lighted, its smooth all-white lining has rounded corners, snap-out rack guides for easy cleaning.



ADJUSTABLE LAMP
Only Perfection has a lamp that you can slide UP or down to light the entire cooking top.



MULTI-USE COOKER
6-qt. size, complete with pudding pan, fry basket and rack, enables you to cook an entire meal at one time; raises its own heating unit without hooks or tongs for surface cooking.

Cook "By The Clock" While You Relax or Shop

Just place your meal in the oven, set the electric clock-timer and the thermostat, and you are free from tiresome oven watching and waiting. Perfection's automatic cooking gives you free time to relax, shop or visit. You are assured that a perfect meal will be ready "on time" all automatically.

SEE IT HERE! EASY TERMS

Save money on Bed Room, Sofa Bed and Breakfast Suites. Coal & Wood Heaters and numbers of other useful things for the Home.

YOU ARE ALWAYS WELCOME AT

HEATH
HARDWARE & FURNITURE COMPANY

Red Hot Stove on Cold Days!

Benton,

Kentucky

MEMORIAL

Benton Lodge No. 622 F & A. M. Benton, Ky.

On December 24, 1949, Brother Raymond A. Smith was called from the walks and duties of this world to his eternal reward at the age of 47 years. Brother Smith suffered from a heart attack on Friday, December 23 in Louisville, Ky. and was rushed to a hospital in the city where he died on Saturday, the 24.

Brother Smith was an active Senator of the First Senatorial District from 1934 to 1938. He has served as sales representative for the Standard Printing Co. for the last six years.

Brother Smith was initiated into the Masonic order at the age of 21 years, and was a good Mason, always ready to do what he could to help build up the fraternity. He was a Master Mason in Benton Lodge No. 622 F & A. M., a member of the Royal Arch Chapter No. 167 a member of Benton Commandery No. 46, and a Knight Templar.

Brother Smith served as State Senator of the First Senatorial District from 1934 to 1938. He has served as sales representative for the Standard Printing Co. for the last six years.

Brother Smith was a good Christian gentleman, and will be greatly missed by his family, Church, Lodge, and his many friends.

A very impressive Masonic Service was conducted at the graveside by Brother Lewis R. O'Daniel, P. M. of the Benton Lodge No. 622, which was attended by brother Masons.

To his good companion, Mrs. Maybelle Smith, and two lovely daughters, Betty Ray and Jo Ann Smith, we offer our deepest sympathy. May the vacant place in your heart and home be filled with God's love.

Be it resolved that a copy of this be mailed to the family, and a copy to the Masonic Home Journal, and a copy be spread on the minutes as a memorial, and a copy be furnished the county paper for publication.

Your Committee on Memorials,

A. G. Childers
C. L. Niceley
H. A. Riley

We can save you money on coal & oil heaters, if you need them this cold weather. Heath Hardware & Furniture Co.

Statement of Condition Of The Bank of Benton

Benton, Kentucky
DECEMBER 31, 1949

Resources		OFFICERS:	
Loans and Discounts	\$781,077.31	J. P. Stilley, President	
U. S. Bonds and Other		Fred Filbeck, Vice-President	
Government Obligations	816,700.00	C. D. Nichols, Cashier	
Other Bonds & Securities	32,000.00	Myrvin H. Mohler, Asst. Cashier	
Banking House	1.00	Paul Darnall, Asst. Cashier	
Furniture and Fixtures	1.00	Elvira Breezeel, Bookkeeper	
Overdrafts	113.25	Kathleen Jennings, Bookkeeper	
Cash on Hand and Due from Banks	176,089.65	Robert Lee Ross, Bookkeeper	
TOTAL	1,805,982.21	DIRECTORS:	
Liabilities		Paul Darnall	
Capital Stock (Common)	\$50,000.00	Fred Filbeck	
Surplus	50,000.00	J. P. Stilley	
Undivided Net Profits	50,000.00	Cliff Treas	
Reserves for Taxes and Depreciation	28,152.07	C. R. Smith	
DEPOSITS	1,627,830.14	C. D. Nichols	
TOTAL	1,805,982.21	Mark Clayton	
		Charlie Cone	
		H. L. Sutherland	

A regular semi-annual dividend was declared out of the earnings of the past six months and checks were issued to stockholders entitled to same. The officials of this bank are very much pleased to present to the business public the above splendid statement, and for which we are very thankful to our customers, who made it possible for such a statement to be made.

J. P. STILLEY, President C. D. NICHOLS, Cashier

Bank of Benton

Member F. D. I. C.

Volume LXII

County War Veterans MARCH OF DUTY
Holland Rose A. Named Chairman

More Money Is Needed to Keep Program Going

THE MARSHALL County quota for the 1950 March of Dimes drive has been set at \$2,000. Holland Rose, county chairman, has announced. The state quota for the campaign is \$600,000.

MR. ROSE, county superintendent of schools, was selected as county chairman for the fourth consecutive year.

THE DRIVE officially begins Saturday, January 14 and runs through January 31. However, Mr. Rose said, his office is already busy mailing out letters and cards for contributions and asks that all who receive them return them at once with a generous contribution.

NEVER HAS the need been greater he said. And he added that with the heavy 1949 case load its terrific drain on the National Foundation's epidemic aid fund, the need actually surpasses the quota.

He pointed out that five Marshall County cases were treated last year, and that one of them was an iron lung case, and the child is still being treated in a Louisville hospital. "During the past 12 months," Mr. Rose stated, "the state fund spent more than \$1,900 on Marshall County cases, and this is a great deal more than the county had contributed."

ALL SCHOOLS, churches, other institutions and individuals are asked by the chairman to contribute this year.

"THE PEOPLE of this county have been very generous in the past and I expect them to be the same this time," he said.

Yuletide Was Made Merry For Them by Friends

"THE OLD FOLKS at the County Farm had the biggest Christmas ever seen at the farm," said Elmer Young, the manager.

"Our heartfelt thanks go out to everyone who helped make this such a wonderful Christmas out here," Mrs. Q. R. Fleming, assistant manager said.

A NEW PIANO, donated by Rev. Burpo of Olive Maple Springs community; a turkey by Mr. and Mrs. Nolan Harper and chicken and the trimmings by Mr. and Mrs. C. E. Attnip were among the many fine things received.

A partial list of those helping to make Christmas a wonderful occasion:

BRO. CAMPBELL, Briensburg Baptist Church; Junior Class Little Cypress Missionary Baptist Church; Calvert Methodist Wesleyan Service Guild; Church of Christ of Calvert City; Palma Missionary Society; Pleasant Grove Methodist Church; First Baptist Church of Benton; Briensburg Methodist Church; Junior Woman's Club of Benton - Christmas Dinner from soup to nuts; Baptist Missionary Society of Calvert City; Junior Class of First Methodist Church of Benton; Sharpe Homemakers; Oakland Church.

BREWERS PTA; A Parai Club of Benton; Mr. and Mrs. Mike Frazier; William Heath; Hardy Little; Mrs. Victor Wallace and daughter; Mrs. James G. Hodges of Wappello, Mo.; Chas. Grzes; Mr. and Mrs. Tommy Chester; Mrs. Annie Nelson and family; Mr. and Mrs. Boone Hill; American Legion Post 85 of Benton; Mr. and Mrs. Ray Linn and family; Mrs. Martin and Mrs. Pace; Mr. and Mrs. R. Fitzgerald; Mrs. DeHaven and Mrs. Zaprude; Riley's Store of Benton; Morgan's Store of Benton; Mr. and Mrs. Harrell of Clvert City; Mrs. Kuykendall of Benton.

At least sixty more individuals helped to make the farm's grandest Christmas.

CHECKS MAILED ON INSURANCE

The Veterans started mailing Service Life Insurance checks to veterans on Tuesday.

Checks will be mailed to VA's headquarters million a week.

Start of the formal year is anticipated in the Treasury officials.

A total of \$3 billion is to be distributed to the veterans.

VA officials in which a veteran's division is terminated by the VA.

Two Marshall County cases were treated last year, and that one of them was an iron lung case, and the child is still being treated in a Louisville hospital.

TWO MARSHALL COUNTY CASES were treated last year, and that one of them was an iron lung case, and the child is still being treated in a Louisville hospital.

ALL SCHOOLS, churches, other institutions and individuals are asked by the chairman to contribute this year.

"THE PEOPLE of this county have been very generous in the past and I expect them to be the same this time," he said.

Yuletide Was Made Merry For Them by Friends

"THE OLD FOLKS at the County Farm had the biggest Christmas ever seen at the farm," said Elmer Young, the manager.

"Our heartfelt thanks go out to everyone who helped make this such a wonderful Christmas out here," Mrs. Q. R. Fleming, assistant manager said.

A NEW PIANO, donated by Rev. Burpo of Olive Maple Springs community; a turkey by Mr. and Mrs. Nolan Harper and chicken and the trimmings by Mr. and Mrs. C. E. Attnip were among the many fine things received.

A partial list of those helping to make Christmas a wonderful occasion:

BRO. CAMPBELL, Briensburg Baptist Church; Junior Class Little Cypress Missionary Baptist Church; Calvert Methodist Wesleyan Service Guild; Church of Christ of Calvert City; Palma Missionary Society; Pleasant Grove Methodist Church; First Baptist Church of Benton; Briensburg Methodist Church; Junior Woman's Club of Benton - Christmas Dinner from soup to nuts; Baptist Missionary Society of Calvert City; Junior Class of First Methodist Church of Benton; Sharpe Homemakers; Oakland Church.

BREWERS PTA; A Parai Club of Benton; Mr. and Mrs. Mike Frazier; William Heath; Hardy Little; Mrs. Victor Wallace and daughter; Mrs. James G. Hodges of Wappello, Mo.; Chas. Grzes; Mr. and Mrs. Tommy Chester; Mrs. Annie Nelson and family; Mr. and Mrs. Boone Hill; American Legion Post 85 of Benton; Mr. and Mrs. Ray Linn and family; Mrs. Martin and Mrs. Pace; Mr. and Mrs. R. Fitzgerald; Mrs. DeHaven and Mrs. Zaprude; Riley's Store of Benton; Morgan's Store of Benton; Mr. and Mrs. Harrell of Clvert City; Mrs. Kuykendall of Benton.

At least sixty more individuals helped to make the farm's grandest Christmas.

Green Shows 112 And 15 Lo

A FEW years ago, the Green Devils were focused on the basketball court.

THE VERY next year, the Green Devils were supposed to be the weakest team in the county.

They won the first game, and then proceeded to win the rest of the games.

Phillips Chevrolet Company

USED CARS & TRUCKS

SUPER DUPERS

Exceptional Bargains

- 1948 DODGE, Fordor Sedan \$1,250
- 1947 CHEVROLET, Fordor-Fully equipped ... \$1,190
- 1947 CHEVROLET, Club Coupe - 2 tone color \$1,190
- 1947 PONTIAC, Sedanette-fully equipped \$1,225
- 1946 CHEVROLET, Fordor Fleetmaster \$975
- 1946 CHEVROLET, Tudor Fleetmaster \$975
- 1942 FORD, Club Coupe \$650
- 1941 FORD, Fordor Sedan, Radio & Heater ... \$575
- 1941 CHEVROLET, 4-door Fleetline, Rebuilt motor \$675
- 1941 FORD, Fordor Sedan, Radio & Heater ... \$650
- 1936 CHEVROLET, 4 door Sedan - Clean \$250

- 1936 CHEVROLET, 4 door Sedan - Clean \$250
- 1939 CHEVROLET, 2 door Sedan \$95
Runs and drives good
- 1939 CHEVROLET, 3-4 ton truck \$150
Good motor, tires, etc.
- 1938 INTERNATIONAL, Pickup \$150
Excellent Farm Truck
- 1937 CHEVROLET, 2 door \$125
Servicable

Seven models of trucks of all tonage to choose from.

SPECIALS
You Make The Price On These Three

- 1938 OLDS, Automatic Transmission
- 1937 CHEVROLET, 2 door Sedan
- 1938 FORD, Coupe