

2-1-2018

## Relationships Between Clinical Scales and Binge Eating Days in Adults with Moderate to Severe Binge Eating Disorder in Two Phase III Studies

Leslie L. Citrome  
*New York Medical College*

Judith C. Kando

Caleb Bliss

Follow this and additional works at: [https://touro scholar.touro.edu/nymc\\_fac\\_pubs](https://touro scholar.touro.edu/nymc_fac_pubs)



Part of the [Psychiatry and Psychology Commons](#), and the [Therapeutics Commons](#)

---

### Recommended Citation

Citrome, L. L., Kando, J., & Bliss, C. (2018). Relationships Between Clinical Scales and Binge Eating Days in Adults with Moderate to Severe Binge Eating Disorder in Two Phase III Studies. *Neuropsychiatric Disease and Treatment*, 14, 537-546. <https://doi.org/10.2147/NDT.S158395>

This Article is brought to you for free and open access by the Faculty at Touro Scholar. It has been accepted for inclusion in NYMC Faculty Publications by an authorized administrator of Touro Scholar. For more information, please contact [touro.scholar@touro.edu](mailto:touro.scholar@touro.edu).

# Relationships between clinical scales and binge eating days in adults with moderate to severe binge eating disorder in two Phase III studies

Leslie Citrome<sup>1</sup>  
Judith C Kando<sup>2</sup>  
Caleb Bliss<sup>3</sup>

<sup>1</sup>Department of Psychiatry and Behavioral Sciences, New York Medical College, Valhalla, NY, USA; <sup>2</sup>Shire, Global Medical Affairs, Lexington, MA, USA; <sup>3</sup>Shire, Biostatistics, Lexington, MA, USA

**Objectives:** In two Phase III studies, lisdexamfetamine dimesylate (LDX) reduced binge eating (BE) days/week in adults with moderate to severe binge eating disorder (BED) and was associated with improvement based on the Clinical Global Impressions–Improvement (CGI-I) scale. In this study, post hoc analyses examined the relationships between clinical observations and clinical rating scales in individuals with BED.

**Clinical trial registration:** NCT01718483 ([ClinicalTrials.gov/ct2/show/NCT01718483](https://clinicaltrials.gov/ct2/show/NCT01718483)); NCT01718509 ([ClinicalTrials.gov/ct2/show/NCT01718509](https://clinicaltrials.gov/ct2/show/NCT01718509)).

**Methods:** Two 12-week, double-blind, placebo-controlled studies randomized (1:1) adults meeting *Diagnostic and Statistical Manual of Mental Disorders*, Fourth Edition, Text Revision, BED criteria and with protocol-defined moderate to severe BED (study 1, N=383; study 2, N=390) to placebo or dose-optimized LDX (50 or 70 mg). Assessments included the number of BE days/week, CGI–Severity (CGI-S) and CGI-I scores, and Yale–Brown Obsessive Compulsive Scale modified for Binge Eating (Y-BOCS-BE) total scores. For these post hoc analyses, data were pooled across studies and treatment arms. Statistical assessments included Spearman correlations and equipercentile linking analyses (ELA). Reported *P*-values are nominal (descriptive and not adjusted for multiplicity).

**Results:** At baseline, nominally significant correlations with CGI-S scores were reported for BE days/week ( $r=0.374$ ;  $P<0.0001$ ) and Y-BOCS-BE total scores ( $r=0.319$ ;  $P<0.0001$ ). Baseline ELA for CGI-S further characterized this relationship: a CGI-S score of 4 (moderately ill) corresponding to 3.504 BE days/week and a Y-BOCS-BE total score of 18.6. Nominally significant correlations with CGI-I scores were reported for changes from baseline at study endpoint for BE days/week ( $r=0.647$ ;  $P<0.0001$ ) and Y-BOCS-BE total scores ( $r=0.741$ ;  $P<0.0001$ ). ELA for CGI-I scores at study endpoint showed that a CGI-I score of 1 (very much improved) corresponds to a reduction from baseline of 4.504 BE days/week and 19.4 points for Y-BOCS-BE total score.

**Conclusion:** These post hoc analyses suggest that indices of global disease severity and improvement positively correlate with BE behavior and with obsessive and compulsive features of BED, measured by the Y-BOCS-BE, supporting the clinical relevance of BED treatment outcomes.

**Keywords:** binge eating days, binge eating disorder, lisdexamfetamine dimesylate, clinical rating scales, Clinical Global Impressions scale, Yale–Brown Obsessive Compulsive Scale modified for Binge Eating

Correspondence: Leslie Citrome  
11 Medical Park Drive, Suite 106,  
Pomona, NY 10970, USA  
Tel +1 845 362 2081  
Fax +1 845 362 8745  
Email [citrome@cnsconsultant.com](mailto:citrome@cnsconsultant.com)

## Plain language summary

Lisdexamfetamine dimesylate (LDX) reduced binge eating days/week, reduced the obsessiveness of binge eating thoughts and compulsiveness of binge eating behavior (based on the Yale–Brown Obsessive Compulsive Scale modified for Binge Eating [Y-BOCS-BE]), and produced global

disease improvement (based on the Clinical Global Impressions–Improvement [CGI-I] scale) in adults with moderate to severe binge eating disorder (BED) in Phase III clinical studies. In the present study, pooled, post hoc analyses examined the relationships between clinical observations (binge eating days/week and Y-BOCS-BE total score) and clinical rating scales (CGI–Severity [CGI-S] and CGI-I) in individuals with BED who participated in two LDX clinical studies using equipercenile linking analyses. The findings from these analyses suggest that global disease severity and improvement measures (the CGI-S and CGI-I, respectively) positively correlate with binge eating frequency, with the obsessiveness of binge eating thoughts, and with the compulsiveness of binge eating behavior (measured with Y-BOCS-BE total score). Additionally, binge eating frequency reductions of 3.5–7.0 days/week and Y-BOCS-BE total score reductions of 13.9–36.5 points correspond to CGI-I scores of “very much improved”. These findings support the clinical relevance of treatment outcomes in BED.

## Introduction

Lisdexamfetamine dimesylate (LDX) is approved for use in adults with moderate to severe binge eating disorder (BED) in the US<sup>1</sup> and other countries. In two large Phase III, randomized, double-blind, placebo-controlled trials, LDX resulted in clinically meaningful and statistically significant reductions in binge eating (BE) days/week compared with placebo in adults with protocol-defined moderate to severe BED.<sup>2</sup> In these studies, the least squares mean (95% CI) treatment differences for the change from baseline BE days/week at weeks 11–12 significantly favored LDX over placebo (study 1:  $-1.35$  [ $-1.70, -1.01$ ]; study 2:  $-1.66$  [ $-2.04, -1.28$ ]; both  $P < 0.001$ ).<sup>2</sup>

In these studies, LDX also produced statistically significant improvements on key secondary endpoints that included the Clinical Global Impressions–Improvement (CGI-I) scale and the Yale-Brown Obsessive Compulsive Scale modified for Binge Eating (Y-BOCS-BE).<sup>2</sup> On the dichotomized CGI-I, the percentage of participants categorized as improved (those with scores of 1 or 2 [much/very much improved]) at week 12/early termination (ET) was greater with LDX than with placebo (study 1: 82.1% vs 47.3%; study 2: 86.2% vs 42.9%; both  $P < 0.001$ ),<sup>2</sup> resulting in a pooled number needed to treat of 3 (95% CI: 3–4) for LDX versus placebo.<sup>3</sup> For Y-BOCS-BE total score, the least squares mean (95% CI) treatment differences for change from baseline at week 12 significantly favored LDX over placebo (study 1:  $-7.40$  [ $-8.93, -5.88$ ]; study 2:  $-7.94$  [ $-9.51, -6.36$ ]; both  $P < 0.001$ ).<sup>2</sup>

In both studies,<sup>2</sup> the safety and tolerability profile of LDX was consistent with its well-established profile in individuals

with attention-deficit/hyperactivity disorder (ADHD).<sup>1</sup> Treatment-emergent adverse events reported by  $\geq 10\%$  of participants treated with LDX in both studies were dry mouth, insomnia, and headache.<sup>2</sup> The observed increases in blood pressure and heart rate<sup>2</sup> were also consistent with the established safety profile of LDX in ADHD.<sup>1</sup>

Relationships between global clinical disease severity and improvement (measured with the CGI–Severity [CGI-S] and CGI-I scales), the number of BE days/week, and Y-BOCS-BE total score in individuals with BED have not previously been described. Such analyses are key to our understanding of the clinical significance of specific observations (eg, reductions in BE days/week or Y-BOCS-BE total score) in individuals with BED by relating them to standardized global clinical rating scales (ie, CGI-S or CGI-I) that are used in studies of a wide range of psychiatric disorders.

Similar types of analyses have been conducted in other psychiatric conditions, including ADHD, schizophrenia, and panic disorder.<sup>4–7</sup> In an analysis of two LDX studies in individuals with ADHD (one in children<sup>8</sup> and one in adults<sup>9</sup>), the relationship between ADHD Rating Scale, Version 4 (ADHD-RS-IV) total scores and CGI-S and CGI-I scores was examined.<sup>4</sup> This post hoc analysis found that ADHD-RS-IV total score changes from baseline of  $\sim 8$ – $10$  points corresponded to a 1-point improvement in CGI-S score and that changes of  $10$ – $15$  points corresponded to a 1-point improvement in CGI-I score.<sup>4</sup> In an analysis of 14 clinical trials of acutely ill individuals with schizophrenia,<sup>7</sup> relationships between the Brief Psychiatric Rating Scale (BPRS), Positive and Negative Syndrome Scale (PANSS), and CGI-I scores were examined. This analysis demonstrated that 10-point reductions on the BPRS and 15-point reductions on the PANSS corresponded to a CGI-I rating of minimally improved and a CGI-S score change of 1 point.<sup>7</sup> Taken together, these analyses support the concept that the CGI is a valid estimate of psychopathology and clinically relevant disease improvement, thereby offering the practicing clinician a tool to track global disease improvement during treatment, as has previously been suggested.<sup>10,11</sup>

The objective of this report was to further understand the relationships between clinical observations of BE, the number of BE days/week and Y-BOCS-BE total score, and the CGI-S at baseline and the CGI-I at the end of treatment in adults with BED.

## Methods

The design and methodology of the two Phase III BED studies included in these post hoc analyses has previously

been described in detail;<sup>2</sup> a summary is provided in the following text.

## Study design and treatment

These randomized, placebo-controlled, parallel-group, multicenter studies ([ClinicalTrials.gov](https://www.clinicaltrials.gov) registry numbers: NCT01718483 and NCT01718509) were conducted using the same design and methods. Each study included three phases: a 2-week screening phase, a 12-week double-blind phase (dose-optimization period, 4 weeks; dose-maintenance period, 8 weeks), and a follow-up visit. After screening, participants were randomized 1:1 to placebo or dose-optimized LDX (50 or 70 mg) for 12 weeks. Treatment with LDX was started at 30 mg during week 1 and increased to 50 mg during week 2. Increases to 70 mg LDX, based on tolerability and clinical need, occurred during weeks 3 and 4. A one-time decrease to 50 mg LDX was permitted during week 3 based on participant tolerability. The optimized LDX dosage (50 or 70 mg) was maintained during weeks 4–12; participants requiring a dosage reduction during the dose-maintenance phase were discontinued. A follow-up visit occurred 1 week after the week 12/ET visit to assess safety.

Each study was approved by ethics committees (Box S1). Both studies were conducted in accordance with International Conference on Harmonization of Good Clinical Practice and the principles of the Declaration of Helsinki. All participants were required to provide written, informed consent before entering a study.

## Participants

Eligible participants were men or nonpregnant women (aged 18–55 years) meeting *Diagnostic and Statistical Manual of Mental Disorders*, Fourth Edition, Text Revision (DSM-IV-TR) BED criteria, confirmed by the eating disorders module of the Structured Clinical Interview for the DSM-IV Axis I Disorders and the Eating Disorder Examination Questionnaire, and having protocol-defined moderate to severe BED ( $\geq 3$  BE days/week for 14 days before baseline and a CGI-S score  $\geq 4$  at screening and baseline) and a body mass index (BMI) of 18–45 kg/m<sup>2</sup>. Full exclusion criteria have been reported previously.<sup>2</sup> Key exclusion criteria included current anorexia nervosa or bulimia nervosa; a comorbid psychiatric disorder controlled with prohibited medications or uncontrolled and associated with significant symptoms or any condition that could confound assessments; having received psychotherapy or weight loss support for BED within 3 months of screening; being considered a suicide risk by the investigator, previously

attempting suicide, or currently demonstrating active suicidal ideation; having a history of cardiovascular issues or moderate or severe hypertension; and having a lifetime amphetamine or stimulant abuse history, recent substance abuse or dependence history, or intolerance or hypersensitivity to LDX or related compounds. Excluded medications included benzodiazepines, antidepressants, antipsychotics, anxiolytics, clonidine, guanfacine, investigational compounds, monoamine oxidase inhibitors, narcotics, sedatives/sedative hypnotics, weight loss therapies (within 30 days of screening); sympathomimetics and appetite suppressants (within 6 months of screening); and cough/cold suppressants containing stimulants/sympathomimetic agents, herbal preparations, melatonin, sedating antihistamines (within 7 days of screening). In addition, any psychoactive medication used within five half-lives of screening was exclusionary.

## Endpoints

Efficacy endpoints included in these post hoc analyses included BE days/week, CGI-S and CGI-I scores, and Y-BOCS-BE total score. BE days/week (prespecified primary efficacy endpoint) was captured daily via self-reported diaries. The CGI-S assessed global disease severity at baseline on a 7-point scale (range: 1 [normal, not at all ill] to 7 [among the most extremely ill]).<sup>12</sup> The CGI-I (prespecified key secondary endpoint), a measure of global improvement in disease severity<sup>12</sup> relative to baseline, was assessed on a 7-point scale (range: 1 [very much improved] to 7 [very much worse]). The Y-BOCS-BE<sup>13</sup> (prespecified key secondary endpoint), which is a modified version of the Y-BOCS,<sup>14</sup> assessed the obsessiveness of BE thoughts and compulsiveness of BE behavior. Y-BOCS-BE total score ranges from 0 to 40, with higher scores indicating more severe symptoms.

## Data presentation and statistical analyses

For the post hoc analyses described herein, data at baseline or study endpoint (weeks 11–12 for BE days/week; week 12/ET for CGI-I; week 12 for Y-BOCS-BE total score) were pooled across studies. Data are reported for each treatment arm and for the overall population. Participants were from the full analysis set (FAS; those taking  $\geq 1$  study drug dose and having  $\geq 1$  postbaseline assessment for the number of BE days/week) of each study with non-missing values for both variables in each relationship.

Descriptive statistics for BE days/week and Y-BOCS-BE total score are presented by CGI-S and CGI-I scores. Spearman correlations assessed relationships at baseline (CGI-S score and the number of BE days/week; CGI-S score and

Y-BOCS-BE total score) and at study endpoint (CGI-I score at week 12/ET and the number of BE days/week at weeks 11–12; CGI-I score at week 12/ET and the change from baseline in the number of BE days/week at weeks 11–12; CGI-I score at week 12/ET and Y-BOCS-BE total score at week 12; CGI-I score at week 12/ET and the change in Y-BOCS-BE total score at week 12). Reported *P*-values are nominal (ie, not adjusted for multiplicity) and are presented for descriptive purposes only.

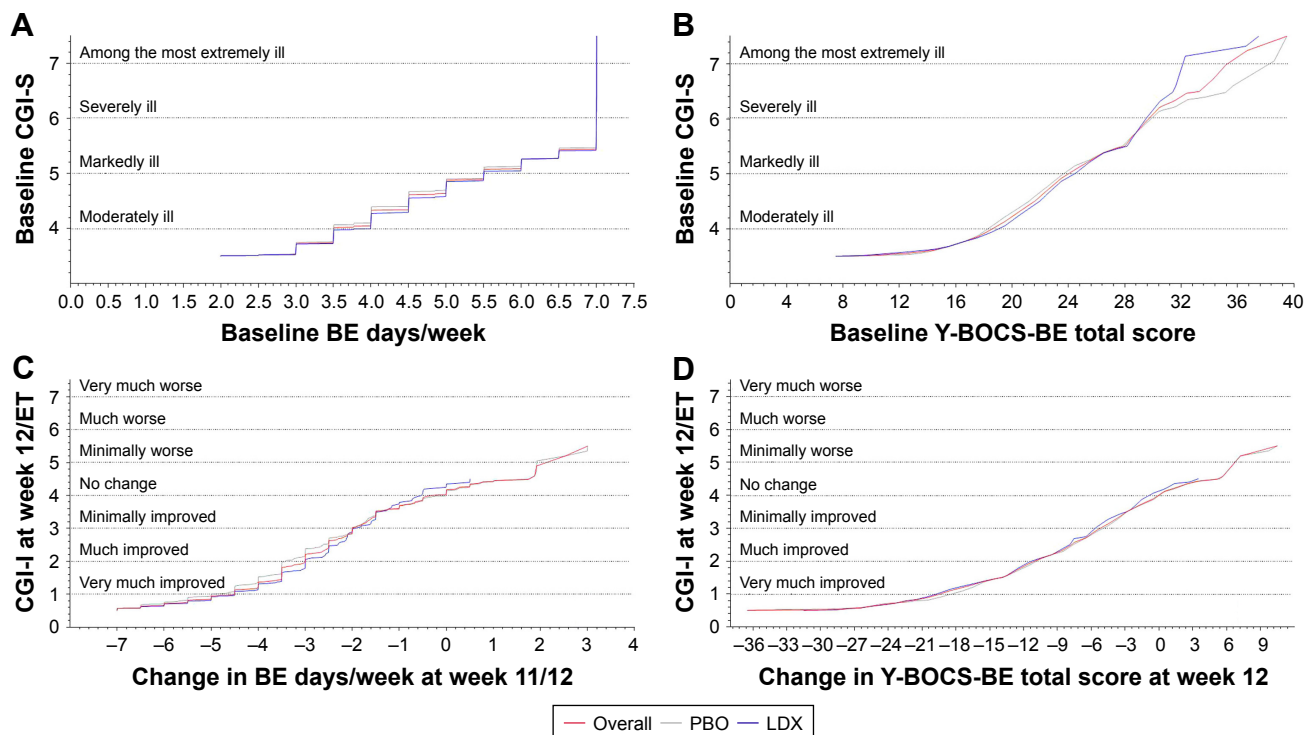
Equipercile linking analyses were conducted as previously described by Goodman et al.<sup>4</sup> These analyses identified scores on different measures with the same percentile rank. First, a percentile rank function for each variable was generated. For each function, respective scores on two measures were plotted as X, Y pair values based on each variable having the same percentile rank. Percentile rank functions were calculated for relationships at baseline (CGI-S score and the number of BE days/week; CGI-S score and Y-BOCS-BE total score) and at study endpoint (CGI-I score at week 12/ET and the change from baseline in the number of BE days/week at weeks 11–12; CGI-I score at week 12/ET and the change in Y-BOCS-BE total score at week 12). The equipercile

linking function requires that both variables be continuous. To apply this method in the current analyses, CGI-S, CGI-I, and Y-BOCS-BE scores were considered piecewise continuous in the range  $X - 0.5$  to  $X + 0.5$ , and BE days/week values were considered piecewise continuous in the range  $X - 0.005$  to  $X + 0.005$  (as shown in Figure 1). Therefore, all reported values are understood to encompass a range. It is important to emphasize that this technique did not compare absolute scores between measures for individual participants. Rather, it identified scores for clinical observations (BE days/week or Y-BOCS-BE) having the same percentile rank on a clinical scale (CGI-S or CGI-I). Individual participant scores on specific items on the Y-BOCS-BE were not taken into account.

## Results

### Participant disposition and demographics

The pooled FAS in this analysis included 360 participants randomized to placebo and 364 randomized to LDX. Participant demographic and clinical characteristics are briefly summarized in Table 1. Most participants were female, white, and obese (BMI range: 18.5–45.2 kg/m<sup>2</sup>). The mean number of BE days/week, mean Y-BOCS-BE total score,



**Figure 1** Equipercile linking functions<sup>a</sup> at baseline (**A** and **B**) and for change from baseline (**C** and **D**), pooled full analysis set.

**Notes:** <sup>a</sup>The equipercile linking function requires that both variables be continuous. To apply this method, scores for CGI-S, CGI-I, and Y-BOCS-BE were considered piecewise continuous ranging from  $X - 0.5$  to  $X + 0.5$ , and scores for binge eating days/week were considered piecewise continuous ranging from  $X - 0.005$  to  $X + 0.005$ . Therefore, all values are understood to encompass a range.

**Abbreviations:** BE, binge eating; CGI-I, Clinical Global Impressions–Improvement; CGI-S, Clinical Global Impressions–Severity; ET, early termination; LDX, lisdexamfetamine dimesylate; PBO, placebo; Y-BOCS-BE, Yale-Brown Obsessive Compulsive Scale modified for Binge Eating.

**Table 1** Baseline demographic and clinical characteristics, pooled full analysis set

	Overall (n=724)	PBO (n=360)	LDX (n=364)
Mean $\pm$ SD age, years	38.0 $\pm$ 10.18	38.1 $\pm$ 10.12	37.9 $\pm$ 10.25
Female, n (%)	627 (86.6)	310 (86.1)	317 (87.1)
White, n (%)	550 (76.0)	274 (76.1)	276 (75.8)
Mean $\pm$ SD weight, kg	93.67 $\pm$ 20.223	93.00 $\pm$ 19.832	94.33 $\pm$ 20.608
BMI <sup>a</sup>			
Mean $\pm$ SD, kg/m <sup>2</sup>	33.52 $\pm$ 6.254	33.32 $\pm$ 6.292	33.72 $\pm$ 6.218
Obese (BMI $\geq$ 30 kg/m <sup>2</sup> ), n (%)	495 (68.4)	247 (68.6)	248 (68.1)
Mean $\pm$ SD binge days/week	4.72 $\pm$ 1.296	4.71 $\pm$ 1.321	4.72 $\pm$ 1.272
CGI-S, <sup>b</sup> n (%)			
Moderately ill	381 (52.6)	183 (50.8)	198 (54.4)
Markedly ill	280 (38.7)	141 (39.2)	139 (38.2)
Severely ill	56 (7.7)	34 (9.4)	22 (6.0)
Among the most extremely ill	7 (1.0)	2 (0.6)	5 (1.4)
Mean $\pm$ SD Y-BOCS-BE total score <sup>c</sup>	21.49 $\pm$ 4.724	21.52 $\pm$ 4.785	21.46 $\pm$ 4.669

**Notes:** <sup>a</sup>Participants with BMI < 18.5 kg/m<sup>2</sup> were not enrolled. <sup>b</sup>Based on inclusion criteria, a CGI-S score  $\geq$  4 (at least moderately ill) was required for study eligibility.

<sup>c</sup>Based on n=721 for the overall population, n=359 for placebo and n=362 for LDX.

**Abbreviations:** BE, binge eating; BMI, body mass index; CGI-S, Clinical Global Impressions–Severity; LDX, lisdexamfetamine dimesylate; PBO, placebo; Y-BOCS-BE, Yale-Brown Obsessive Compulsive Scale modified for Binge Eating.

and distribution of CGI-S scores at baseline were comparable across treatment groups.

## Score distributions

Baseline BE days/week and Y-BOCS-BE total scores by CGI-S score, values at the end of the study by CGI-I score, and changes from baseline at the end of the study by CGI-I score are summarized in Table 2.

## Baseline relationships

Nominally significant correlations with CGI-S scores were reported for the number of BE days/week ( $r=0.374$ ;  $P<0.0001$ ) and Y-BOCS-BE total score ( $r=0.319$ ;  $P<0.0001$ ; Table 2) in the overall population, with a higher number of BE days/week and higher Y-BOCS-BE total scores at baseline being associated with higher baseline CGI-S scores. For a CGI-S score of 4 (moderately ill) at baseline, the mean  $\pm$  SD number of BE days/week at baseline was 4.27 $\pm$ 1.130 and the mean  $\pm$  SD Y-BOCS-BE total score was 20.06 $\pm$ 3.967 in the overall population (Table 2).

Equipercenile linking functions for CGI-S scores and BE days/week and Y-BOCS-BE total score at baseline are depicted in Figure 1A and B. In the overall population, a CGI-S score of 4 (moderately ill) corresponded to 3.504

(range: 1.995–4.501) BE days/week and a Y-BOCS-BE total score of 18.6 (range: 7.5–21.6; Table 3).

## Change from baseline relationships

Nominally significant correlations with CGI-I scores were reported for the number of BE days/week ( $r=0.795$ ;  $P<0.0001$ ), for the change from baseline in BE days/week at weeks 11–12 ( $r=0.647$ ;  $P<0.0001$ ), for Y-BOCS-BE total score at week 12 ( $r=0.797$ ;  $P<0.0001$ ), and for the change from baseline in Y-BOCS-BE total score at week 12 ( $r=0.741$ ;  $P<0.0001$ ; Table 2) in the overall population; a lower number of BE days/week and greater reductions from baseline were associated with greater improvement as measured by the CGI-I. For the placebo and LDX treatment groups, respectively, nominally significant correlations with CGI-I scores were reported for the number of BE days/week ( $r=0.764$  and  $r=0.668$ ; both  $P<0.0001$ ), for the change from baseline in BE days/week at weeks 11–12 ( $r=0.695$  and  $r=0.391$ ; both  $P<0.0001$ ), for Y-BOCS-BE total score at week 12 ( $r=0.726$  and  $r=0.671$ ; both  $P<0.0001$ ), and for the change from baseline in Y-BOCS-BE total score at week 12 ( $r=0.695$  and  $r=0.560$ ; both  $P<0.0001$ ).

For a CGI-I score of 1 (very much improved) at week 12/ET, the mean  $\pm$  SD number of BE days/week at weeks 11–12 was 0.26 $\pm$ 0.523 in the overall population, 0.33 $\pm$ 0.620 in the placebo treatment group, and 0.23 $\pm$ 0.481 in the LDX treatment group; the mean  $\pm$  SD change in BE days/week from baseline was  $-4.36\pm 1.384$  in the overall population,  $-4.27\pm 1.522$  in the placebo treatment group, and  $-4.39\pm 1.331$  in the LDX treatment group (Table 2). For Y-BOCS-BE total score, the mean  $\pm$  SD total score at week 12 was 3.05 $\pm$ 3.951 in the overall population, 4.47 $\pm$ 4.585 in the placebo treatment group, and 2.53 $\pm$ 3.565 in the LDX treatment group in participants with a CGI-I score of 1 at week 12/ET; the mean  $\pm$  SD change from baseline in total score was  $-18.39\pm 6.129$  in the overall population,  $-17.35\pm 7.189$  in the placebo treatment group, and  $-18.77\pm 5.661$  in the LDX treatment group (Table 2).

Equipercenile linking functions between CGI-I scores and changes in the number of BE days/week and Y-BOCS-BE total score are depicted in Figure 1C and D. In the overall population, a CGI-I score of 1 (very much improved) at week 12/ET corresponded to a change of  $-4.504$  (range:  $-7.005$  to  $-3.502$ ; Table 3) from baseline in the number of BE days/week at weeks 11–12. For the placebo and LDX treatment groups, respectively, a CGI-I score of 1 at week 12/ET corresponded to changes of  $-4.996$  (range:  $-7.005$  to  $-3.997$ ) and  $-4.502$  (range:  $-7.005$  to  $-3.498$ ) from baseline in

**Table 2** Binge eating days/week and Y-BOCS-BE total score distribution by CGI-S and CGI-I scores, pooled full analysis set

	Overall		PBO		LDX	
	n	Mean ± SD	n	Mean ± SD	n	Mean ± SD
<b>Baseline values</b>						
<b>CGI-S at baseline</b>						
<b>Binge eating days/week</b>						
Moderately ill (CGI-S =4)	381	4.27±1.130	183	4.20±1.144	198	4.33±1.117
Markedly ill (CGI-S =5)	280	5.12±1.273	141	5.18±1.300	139	5.06±1.246
Severely ill (CGI-S =6)	56	5.56±1.245	34	5.42±1.215	22	5.77±1.288
Among the most extremely ill (CGI-S =7)	7	6.07±1.592	2	5.25±2.475	5	6.40±1.342
Spearman correlations	n=724; r=0.374; P<0.0001		n=360; r=0.389; P<0.0001		n=364; r=0.359; P<0.0001	
<b>CGI-S at baseline</b>						
<b>Y-BOCS-BE total score</b>						
Moderately ill (CGI-S =4)	380	20.06±3.967	183	20.05±3.738	197	20.06±4.179
Markedly ill (CGI-S =5)	278	22.72±4.687	140	22.48±4.716	138	22.96±4.662
Severely ill (CGI-S =6)	56	24.46±5.818	34	24.82±6.379	22	23.91±4.918
Among the most extremely ill (CGI-S =7)	7	27.00±6.429	2	32.50±9.192	5	24.80±4.438
Spearman correlations	n=721; r=0.319; P<0.0001		n=359; r=0.318; P<0.0001		n=362; r=0.319; P<0.0001	
<b>End of study values</b>						
<b>CGI-I at week 12/ET</b>						
<b>Binge eating days/week (weeks 11–12)</b>						
Very much improved (CGI-I =1)	270	0.26±0.523	73	0.33±0.620	197	0.23±0.481
Much improved (CGI-I =2)	130	1.33±1.198	62	1.44±1.198	68	1.24±1.199
Minimally improved (CGI-I =3)	87	2.66±1.627	63	2.81±1.726	24	2.26±1.280
No change (CGI-I =4)	114	3.98±1.835	99	4.05±1.816	15	3.51±1.958
Minimally worse (CGI-I =5)	5	5.63±1.488	5	5.63±1.488	0	–
Spearman correlations	n=606; r=0.795; P<0.0001		n=302; r=0.764; P<0.0001		n=304; r=0.668; P<0.0001	
<b>CGI-I at week 12/ET</b>						
<b>Y-BOCS-BE total score (week 12)</b>						
Very much improved (CGI-I =1)	276	3.05±3.951	74	4.47±4.585	202	2.53±3.565
Much improved (CGI-I =2)	131	9.86±5.320	62	11.16±5.463	69	8.70±4.942
Minimally improved (CGI-I =3)	89	15.78±6.376	63	17.27±6.120	26	12.15±5.562
No change (CGI-I =4)	118	19.34±5.735	102	19.49±5.712	16	18.38±5.976
Minimally worse (CGI-I =5)	5	18.60±2.702	5	18.60±2.702	0	–
Spearman correlations	n=619; r=0.797; P<0.0001		n=306; r=0.726; P<0.0001		n=313; r=0.671; P<0.0001	
<b>Change from baseline values</b>						
<b>CGI-I at week 12/ET</b>						
<b>Binge eating days/week (weeks 11–12)</b>						
Very much improved (CGI-I =1)	270	−4.36±1.384	73	−4.27±1.522	197	−4.39±1.331
Much improved (CGI-I =2)	130	−3.41±1.503	62	−3.30±1.540	68	−3.51±1.472
Minimally improved (CGI-I =3)	87	−2.10±1.512	63	−1.93±1.622	24	−2.53±1.085
No change (CGI-I =4)	114	−0.88±1.739	99	−0.68±1.591	15	−2.16±2.158
Minimally worse (CGI-I =5)	5	−0.47±1.980	5	−0.47±1.980	0	–
Spearman correlations	n=606; r=0.647; P<0.0001		n=302; r=0.695; P<0.0001		n=304; r=0.391; P<0.0001	
<b>CGI-I at week 12/ET</b>						
<b>Y-BOCS-BE total score (week 12)</b>						
Very much improved (CGI-I =1)	275	−18.39±6.129	74	−17.35±7.189	201	−18.77±5.661
Much improved (CGI-I =2)	130	−11.56±6.258	62	−9.94±6.222	68	−13.04±5.956
Minimally improved (CGI-I =3)	89	−5.24±5.881	63	−4.11±5.728	26	−7.96±5.429
No change (CGI-I =4)	118	−2.69±5.328	102	−2.10±4.948	16	−6.44±6.261
Minimally worse (CGI-I =5)	5	−0.40±1.673	5	−0.40±1.673	0	–
Spearman correlations	n=617; r=0.741; P<0.0001		n=306; r=0.695; P<0.0001		n=311; r=0.560; P<0.0001	

**Abbreviations:** CGI-I, Clinical Global Impressions–Improvement; CGI-S, Clinical Global Impressions–Severity; ET, early termination; LDX, lisdexamfetamine dimesylate; PBO, placebo; Y-BOCS-BE, Yale-Brown Obsessive Compulsive Scale modified for Binge Eating.

BE days/week at weeks 11–12. In the overall population, a CGI-I score of 1 at week 12/ET corresponded to a change of −19.4 (range: −36.5 to −13.9; Table 3) from baseline in Y-BOCS-BE total score at week 12. For the placebo and LDX treatment groups, respectively, a CGI-I score of 1 at week 12/ET corresponded to changes of −18.4 (range: −36.5

to −14.1) and −19.7 (range: −31.5 to −13.9) from baseline in Y-BOCS-BE total score at week 12.

## Discussion

These post hoc analyses indicate that measures of global disease severity and improvement (based on CGI-S and

**Table 3** Ranges derived from the equipercenile linking function, pooled full analysis set

	Overall	PBO	LDX
	Corresponding score (range)	Corresponding score (range)	Corresponding score (range)
	<b>Binge eating days/week<sup>a</sup></b>		
<b>CGI-S at baseline<sup>b</sup></b>	n=724	n=360	n=364
Moderately ill (CGI-S =4)	3.504 (1.995, 4.501)	3.503 (1.995, 4.499)	3.995 (1.995, 4.503)
Markedly ill (CGI-S =5)	5.501 (4.502, 6.997)	5.499 (4.500, 6.996)	5.503 (4.503, 6.998)
Severely ill/extremely ill (CGI-S =6 or 7) <sup>c</sup>	7.001/7.005 (6.997, 7.005)	7.000/7.005 (6.996, 7.005)	7.001/7.004 (6.998, 7.005)
<b>CGI-I at week 12/ET</b>	n=606	n=302	n=304
Very much improved (CGI-I =1)	-4.504 (-7.005, -3.502)	-4.996 (-7.005, -3.997)	-4.502 (-7.005, -3.498)
Much improved (CGI-I =2)	-3.003 (-3.502, -2.500)	-3.420 (-3.996, -2.628)	-2.997 (-3.498, -2.310)
Minimally improved (CGI-I =3)	-1.996 (-2.499, -1.497)	-1.997 (-2.624, -1.498)	-1.995 (-2.303, -1.495)
Not improved (CGI-I =4 or 5) <sup>d</sup>	-0.305/1.922 (-1.496, 3.005)	-0.004/1.922 (-1.497, 3.005)	-0.540/NA (-1.269, 0.505)
	<b>Y-BOCS-BE total score<sup>a</sup></b>		
<b>CGI-S at baseline<sup>b</sup></b>	n=721	n=359	n=362
Moderately ill (CGI-S =4)	18.6 (7.5, 21.6)	18.3 (7.5, 21.2)	19.1 (7.5, 22.0)
Markedly ill (CGI-S =5)	24.0 (21.6, 28.0)	23.7 (21.2, 27.7)	24.4 (22.0, 28.2)
Severely ill/extremely ill (CGI-S =6 or 7) <sup>c</sup>	29.7/35.2 (28.1, 39.5)	29.9/36.5 (27.8, 39.5)	29.5/32.1 (28.3, 37.5)
<b>CGI-I at week 12/ET</b>	n=617	n=306	n=311
Very much improved (CGI-I =1)	-19.4 (-36.5, -13.9)	-18.4 (-36.5, -14.1)	-19.7 (-31.5, -13.9)
Much improved (CGI-I =2)	-11.0 (-13.8, -7.8)	-10.8 (-14.0, -7.6)	-11.3 (-13.8, -7.9)
Minimally improved (CGI-I =3)	-5.2 (-7.7, -2.9)	-4.9 (-7.6, -2.8)	-5.6 (-7.9, -2.9)
Not improved (CGI-I =4 or 5) <sup>d</sup>	-0.0/6.7 (-2.8, 10.5)	0.1/6.7 (-2.8, 10.5)	-0.8/NA (-2.7, 3.5)

**Notes:** <sup>a</sup>Baseline values for CGI-S analysis; values at week 11/12 for binge days/week and week 12 for Y-BOCS-BE total score for CGI-I analysis. <sup>b</sup>Estimates for CGI-S scores of 1 (normal, not at all ill), 2 (borderline mentally ill), and 3 (mildly ill) could not be determined because inclusion criteria for the studies required a CGI-S score  $\geq 4$ . <sup>c</sup>For the current analyses, scores of 6 (severely ill) or 7 (most extremely ill) on the CGI-S were merged because of limited sample size. <sup>d</sup>For the current analyses, scores of 4 or 5 (no participants had scores of 6 or 7) on the CGI-I were merged because of limited sample size and defined as “not improved”.

**Abbreviations:** CGI-I, Clinical Global Impressions-Improvement; CGI-S, Clinical Global Impressions-Severity; ET, early termination; LDX, lisdexamfetamine dimesylate; NA, not available; PBO, placebo; Y-BOCS-BE, Yale-Brown Obsessive Compulsive Scale modified for Binge Eating.

CGI-I) positively correlate with BE frequency (reflected by the number of BE days/week) and with the obsessive and compulsive features of BED (reflected by Y-BOCS-BE total score). These findings in individuals with BED are consistent with those reported in analogous analyses conducted with individuals with ADHD, schizophrenia, and panic disorder.<sup>4-7</sup>

These findings provide a benchmark for the interpretation of the clinical relevance of values for BE days/week and Y-BOCS-BE total score (in regard to global disease severity based on CGI-S scores) and reductions in BE days/week and Y-BOCS-BE total scores (in regard to global clinical improvement based on CGI-I scores). At baseline, values for the number of BE days/week and Y-BOCS-BE total score that corresponded to “moderately ill” on the CGI-S were 3.504 and 18.6, respectively. The value of 18.6 for Y-BOCS-BE total score is consistent with the suggestion that Y-BOCS-BE total scores in the range 16–23 correspond to the moderate symptom range.<sup>15</sup> At the end of the study, reductions in the number of BE days/week and in Y-BOCS-BE total score corresponding to “very much improved” on the CGI-I were -4.504 and -19.4, respectively.

The Y-BOCS-BE changes associated with “minimally improved” (-5.2) to “very much improved” (-19.4) on the CGI-I are roughly consistent with the reported minimally clinically important change of -4 to -17 for the Y-BOCS-BE.<sup>13</sup> Although multiple studies have reported concurrent reductions in BE frequency, Y-BOCS-BE total score, and CGI-S score, and global disease improvement on the CGI-I in adults with BED following pharmacologic treatment,<sup>16-20</sup> none of these studies described the relationships between these measures at baseline or at study endpoint. As such, the current analyses are novel and help place baseline BE frequency and Y-BOCS-BE total scores, as well as changes in these measures, in a clinical context.

It is important to note that wide score ranges were observed on both CGI-I (0–7 at week 12/ET) and Y-BOCS-BE (8–39 points at baseline; 1-point increase to -36-point reductions at week 12). This variability may reflect the many different inputs that comprise the evaluation of an individual on these scales. For example, in clinical assessments, differing baseline levels of severity and BE frequency among individuals will result in differing determinations of what constitutes a response that is “very much improved” or “much improved”



on the CGI-I. Moreover, if BE behaviors are markedly reduced but the obsessive thoughts about BE persist, the overall CGI-I would also be affected.

When interpreting these analyses, several limitations should be considered. First, these are post hoc analyses based on pooled data from two studies. Therefore, the reported *P*-values are nominal (ie, not adjusted for multiplicity) and should be interpreted with caution. Furthermore, although by convention CGI-S scores  $>3$  denote some level of functional impairment,<sup>11</sup> using the CGI-S as the sole proxy for clinical severity could limit the precision of the findings because specific indices of functional impairment are not taken into account. Potential ceiling effects could also influence the data because relatively few participants were categorized as “severely ill” or “among the most severely ill” on the CGI-S at baseline. Similarly, potential floor effects could influence the data because study entry required a BE frequency  $\geq 3$  BE days/week and a CGI-S score  $\geq 4$  at baseline. Lastly, a detailed examination of the Y-BOCS-BE subscales was not conducted because the intent of these analyses was to demonstrate broad relationships between total score on a research rating scale, observed behaviors, and general clinical impressions. The approach followed in these analyses is consistent with previous examinations in other psychiatric disorders.<sup>4-7</sup> A detailed component analysis of LDX treatment effects is beyond the scope of this paper, but would be of interest to pursue in the future.

## Conclusions

The CGI is a scale that allows clinicians to capture more information than is captured by BE frequency or by means of binge-related obsessive thoughts and compulsive behaviors. Specifically, it allows clinicians to consider the distress level and level of functional impairment of an individual.<sup>11</sup> These factors are not always captured in formal rating scales, making the CGI an important secondary assessment in clinical studies. The current post hoc analyses in individuals with protocol-defined moderate to severe BED suggest that CGI-S score (an index of global disease severity) positively correlates with baseline levels of BE behavior and with the obsessive and compulsive features of BED, with the equipercentile linking function demonstrating that a CGI-S score of 4 (moderately ill) corresponds to 1.995–4.501 BE days/week and to a Y-BOCS-BE total score of 7.5–21.6. Furthermore, the analyses suggest that CGI-I score (an index of global disease improvement) positively correlates with reductions in the same measures, with the equipercentile linking function demonstrating that a CGI-I score of 1 (very

much improved) corresponds to a decrease in BE days/week ranging from 3.502 to 7.005 and to a decrease in Y-BOCS-BE total score ranging from 13.9 to 36.5 points. Taken together, these observations further improve our understanding of the clinical significance of treatment outcomes in BED.

## Acknowledgments

This clinical research was funded by the sponsor, Shire Development LLC (Lexington, MA). Shire Development LLC provided funding to Complete Healthcare Communications, LLC (CHC; West Chester, PA), an ICON plc Company, for support in writing and editing this manuscript at the direction of the authors. Under authors' direction, Madhura Mehta, PhD, Wendy van der Spuy, PhD, and Craig Slawecki, PhD, employees of CHC, provided writing and formatting assistance for this manuscript. Editorial assistance in the form of proofreading, copyediting, and fact checking was also provided by CHC.

## Disclosure

Dr Citrome has served as a consultant for Acadia, Alkermes, Allergan, Eli Lilly, Forum, Intra-Cellular Therapeutics, Janssen, Lundbeck, Merck, Neurocrine, Noven, Otsuka, Pfizer, Reviva, Shire, Sunovion, Takeda, Teva, and Vanda and as a speaker for Acadia, Alkermes, Allergan, Janssen, Lundbeck, Merck, Neurocrine Biosciences, Inc., Otsuka, Pfizer, Shire, Sunovion, Takeda, Teva, and Vanda. Dr Kando is a former employee of Shire and holds stock and/or stock options in Shire; she is currently an employee of Adamas Pharmaceuticals (Emeryville, CA). Dr Bliss is an employee of Shire and holds stock and/or stock options in Shire. The authors report no other conflicts of interest in this work.

## References

1. Vyvanse® (lisdexamfetamine dimesylate) [prescribing information]. Lexington, MA: Shire US Inc.; 2017.
2. McElroy SL, Hudson J, Ferreira-Cornwell MC, Radewonuk J, Whitaker T, Gasior M. Lisdexamfetamine dimesylate for adults with moderate to severe binge eating disorder: results of two pivotal phase 3 randomized controlled trials. *Neuropsychopharmacology*. 2016;41(5):1251–1260.
3. Citrome L. Lisdexamfetamine for binge eating disorder in adults: a systematic review of the efficacy and safety profile for this newly approved indication – what is the number needed to treat, number needed to harm and likelihood to be helped or harmed? *Int J Clin Pract*. 2015;69(4):410–421.
4. Goodman D, Faraone SV, Adler LA, Dirks B, Hamdani M, Weisler R. Interpreting ADHD rating scale scores: linking ADHD rating scale scores and CGI levels in two randomized controlled trials of lisdexamfetamine dimesylate in ADHD. *Prim Psychiatry*. 2010;17(3):44–52.
5. Leucht S, Kane JM, Kissling W, Hamann J, Etschel E, Engel R. Clinical implications of Brief Psychiatric Rating Scale scores. *Br J Psychiatry*. 2005;187:366–371.
6. Furukawa TA, Shear MK, Barlow DH, et al. Evidence-based guidelines for interpretation of the Panic Disorder Severity Scale. *Depress Anxiety*. 2009;26(10):922–929.

7. Leucht S, Kane JM, Etschel E, Kissling W, Hamann J, Engel RR. Linking the PANSS, BPRS, and CGI: clinical implications. *Neuropsychopharmacology*. 2006;31(10):2318–2325.
8. Biederman J, Krishnan S, Zhang Y, McGough JJ, Findling RL. Efficacy and tolerability of lisdexamfetamine dimesylate (NRP-104) in children with attention-deficit/hyperactivity disorder: a phase III, multicenter, randomized, double-blind, forced-dose, parallel-group study. *Clin Ther*. 2007;29(3):450–463.
9. Adler LA, Goodman DW, Kollins SH, et al. Double-blind, placebo-controlled study of the efficacy and safety of lisdexamfetamine dimesylate in adults with attention-deficit/hyperactivity disorder. *J Clin Psychiatry*. 2008;69(9):1364–1373.
10. Berk M, Ng F, Dodd S, et al. The validity of the CGI severity and improvement scales as measures of clinical effectiveness suitable for routine clinical use. *J Eval Clin Pract*. 2008;14(6):979–983.
11. Busner J, Targum SD. The clinical global impressions scale: applying a research tool in clinical practice. *Psychiatry (Edgmont)*. 2007;4(7):28–37.
12. Guy W. *Clinical Global Impressions*. Rockville, MD: US Department of Health, Education, and Welfare; Public Health Service; Alcohol, Drug Abuse and Mental Health Administration; NIMH Psychopharmacology Research Branch; 1976.
13. Deal LS, Wirth RJ, Gasior M, Herman BK, McElroy SL. Validation of the Yale-Brown Obsessive Compulsive Scale modified for binge eating. *Int J Eat Disord*. 2015;48(7):994–1004.
14. Goodman WK, Price LH, Rasmussen SA, et al. The Yale-Brown Obsessive Compulsive Scale. I. Development, use, and reliability. *Arch Gen Psychiatry*. 1989;46(11):1006–1011.
15. McElroy SL, Mitchell JE, Wilfley D, et al. Lisdexamfetamine dimesylate effects on binge eating behaviour and obsessive-compulsive and impulsive features in adults with binge eating disorder. *Eur Eat Disord Rev*. 2015;24(3):223–231.
16. McElroy SL, Arnold LM, Shapira NA, et al. Topiramate in the treatment of binge eating disorder associated with obesity: a randomized, placebo-controlled trial. *Am J Psychiatry*. 2003;160(2):255–261.
17. McElroy SL, Guerdjikova A, Kotwal R, et al. Atomoxetine in the treatment of binge-eating disorder: a randomized placebo-controlled trial. *J Clin Psychiatry*. 2007;68(3):390–398.
18. McElroy SL, Hudson JI, Capece JA, et al. Topiramate for the treatment of binge eating disorder associated with obesity: a placebo-controlled study. *Biol Psychiatry*. 2007;61(9):1039–1048.
19. McElroy SL, Hudson JI, Malhotra S, Welge JA, Nelson EB, Keck PE Jr. Citalopram in the treatment of binge-eating disorder: a placebo-controlled trial. *J Clin Psychiatry*. 2003;64(7):807–813.
20. McElroy SL, Kotwal R, Guerdjikova AI, et al. Zonisamide in the treatment of binge eating disorder with obesity: a randomized controlled trial. *J Clin Psychiatry*. 2006;67(12):1897–1906.

## Supplementary material

**Box S1** List of independent ethics committee or institutional review boards

<b>ClinicalTrials.gov</b> registry number: <b>NCT01718483</b>
CEIC H. Univ de La Princesa Dña. Cecilia López García FIB H. Univ. de La Princesa (1ª planta) Calle de Diego León, 62 Madrid 28006, Spain
Copernicus Group IRB I Triangle Drive, Suite 100 Durham, NC 27713, USA
Ethikkommission bei der Sächsischen Landesärztekammer Schützenhöhe 16 Dresden 01099, Germany
Ethikkommission zur Beurteilung medizinischer Forschung am Menschen Berliner Allee 20 Hannover 30175, Germany
Independent Ethics Committee of Hospital General Universitario GREGORIO MARAÑÓN C/Dr Esquerdo 46, Pabellón de Gobierno, Planta baja Madrid 28007, Spain
Landesamt for Gesundheit und Soziales Geschäftsstelle der Ethik-Kommission des Landes Berlin Fehrbelliner Platz I Berlin 10707, Germany
McLean Hospital 115 Mill Street Belmont, MA 02478, USA
National Ethics Committee 48 Av. Santescu Street, District I Bucharest, Romania
The Regional Ethical Review Board in Stockholm Nobels väg 9, Floor D3 Stockholm, Sweden 171 65 SOLNA
Tajemník EK Etická komise IKEM a TN Vítěnská 800 Prague 4- Krč, Czech Republic 140 59

(Continued)

### Box S1 (Continued)

<b>ClinicalTrials.gov</b> registry number: <b>NCT01718509</b>
CEIC H. Univ de la Santa Creu i Sant Pau Av. Sant Antoni Mª Claret, 167 Barcelona 08025, Spain
Comitato Etico Indipendente Presso la Fondazione PTV Policlinico Tor Vergata di Roma Viale Oxford 81 Rome 00133, Italy
Comitato per la Sperimentazione Clinica dei Medicinali dell' Azienda Ospedaliero Universitaria Pisana di Pisa Via Roma 67 Pisa 56126, Italy
Copernicus Group IRB I Triangle Drive, Suite 100 Durham, NC 27709, USA
Ethik-Kommission an der Medizinischen Fakultät der Universität Rostock St-Georg-Str. 108 Rostock 18055, Germany
Ethikkommission zur Beurteilung Medizinischer Forschung am Menschen Berliner Allee 20 Hannover, Germany 30175
Human Research Protection Program D-528 Mayo Memorial Building 420 Delaware Street SE Minneapolis, MN 55455, USA
Independent Ethics Committee of Hospital General Universitario GREGORIO MARAÑÓN C/Dr Esquerdo 46, Pabellón de Gobierno, Planta baja Madrid 28007, Spain
Landesamt für Gesundheit und Soziales Geschäftsstelle der Ethik-Kommission des Landes Berlin Fehrbelliner Platz I Berlin 10707, Germany
McLean Hospital IRB 115 Mill Street Belmont, MA 02478, USA
National Ethics Committee 48 Av. Santescu Street, District I Bucharest, Romania
University of Cincinnati IRB University Hall, Suite 300 51 Goodman Drive, P.O. Box 210567 Cincinnati, OH 45221, USA

### Neuropsychiatric Disease and Treatment

## Publish your work in this journal

Neuropsychiatric Disease and Treatment is an international, peer-reviewed journal of clinical therapeutics and pharmacology focusing on concise rapid reporting of clinical or pre-clinical studies on a range of neuropsychiatric and neurological disorders. This journal is indexed on PubMed Central, the 'PsycINFO' database and CAS,

Submit your manuscript here: <http://www.dovepress.com/neuropsychiatric-disease-and-treatment-journal>

and is the official journal of The International Neuropsychiatric Association (INA). The manuscript management system is completely online and includes a very quick and fair peer-review system, which is all easy to use. Visit <http://www.dovepress.com/testimonials.php> to read real quotes from published authors.

Dovepress