

12-1-2017

Temporal Trends and Outcomes of Acute Myocardial Infarction in Patients With Cancer

N Pothineni

N Shah

Yogita Rochlani

M Saad

S Kovelamudi

See next page for additional authors

Follow this and additional works at: https://touro scholar.touro.edu/nymc_fac_pubs



Part of the [Cardiology Commons](#), and the [Oncology Commons](#)

Recommended Citation

Pothineni, N., Shah, N., Rochlani, Y., Saad, M., Kovelamudi, S., Marmagkiolis, K., Bhatti, S., Cilingiroglu, M., Aronow, W., & Hakeem, A. (2017). Temporal Trends and Outcomes of Acute Myocardial Infarction in Patients With Cancer. *Annals of Translational Medicine*, 5 (24), 482. <https://doi.org/10.21037/atm.2017.11.29>

This Article is brought to you for free and open access by the Faculty at Touro Scholar. It has been accepted for inclusion in NYMC Faculty Publications by an authorized administrator of Touro Scholar. For more information, please contact touro.scholar@touro.edu.

Authors

N Pothineni, N Shah, Yogita Rochlani, M Saad, S Kovelamudi, K Marmagkiolis, S Bhatti, M Cilingiroglu, Wilbert Aronow, and A Hakeem

Temporal trends and outcomes of acute myocardial infarction in patients with cancer

Naga Venkata Pothineni¹, Nishi N. Shah¹, Yogita Rochlani², Marwan Saad¹, Swathi Kovelamudi¹, Konstantinos Marmagkiolis³, Sabha Bhatti¹, Mehmet Cilingiroglu⁴, Wilbert S. Aronow², Abdul Hakeem^{1,5}

¹Division of Cardiology, University of Arkansas for Medical Sciences, Little Rock, Arkansas, USA; ²Division of Cardiology, Westchester Medical Center and New York Medical College, Valhalla, New York, USA; ³Department of Cardiology, Florida Hospital, Zephyrhills, Florida, USA; ⁴Department of Cardiology, Arkansas Heart Hospital, Little Rock, Arkansas, USA; ⁵Division of Cardiovascular Medicine, Department of Internal Medicine, Central Arkansas VA Health Care System, Little Rock, Arkansas, USA

Contributions: (I) Conception and design: All authors; (II) Administrative support: None; (III) Provision of study materials or patients: NV Pothineni, NN Shah, Y Rochlani; (IV) Collection and assembly of data: NV Pothineni, NN Shah, Y Rochlani; (V) Data analysis and interpretation: All authors; (VI) Manuscript writing: All authors; (VII) Final approval of manuscript: All authors.

Correspondence to: Wilbert S. Aronow, MD. Professor of Medicine, Westchester Medical Center and New York Medical College, Macy Pavilion, Room 141, Valhalla, New York 10595, USA. Email: waronow@aol.com.

Background: Data on outcomes of ST-elevation myocardial infarction (STEMI) in patients with cancer are scarce. We investigated the nationwide trends in admissions for STEMI, utilization of percutaneous coronary intervention (PCI), and in-hospital outcomes in patients with the three most common cancer diagnoses (lung, breast, and colon) compared to patients without cancer.

Methods: We conducted an administrative database study using the Nationwide Inpatient Sample (NIS). All in-patient hospitalizations for STEMI from 2001 to 2011 were identified. Patients with concomitant diagnosis of lung, breast or colon cancer were identified using appropriate International classification of diagnosis (ICD 9-CM) codes. Primary outcome was utilization of PCI and in-hospital mortality in patients with cancer compared to those without cancer.

Results: Utilization of PCI was 30.8% (1,191/3,871), 20.2% (4,541/22,480) and 17.3% (1,716/9,944) in patients with breast, lung and colon cancer, respectively. Among patients without any of these cancers, use of PCI was 49.6%. In-hospital mortality was highest in patients with lung cancer (57.1%) and lowest in patients without cancer (25.7%).

Conclusions: Patients with cancer have significantly worse in-hospital mortality compared to those without cancer, partly due to a relatively lower rate of PCI utilization in cancer patients with STEMI.

Keywords: Cancer; acute myocardial infarction; percutaneous coronary intervention (PCI)

Submitted Oct 27, 2017. Accepted for publication Nov 15, 2017.

doi: 10.21037/atm.2017.11.29

View this article at: <http://dx.doi.org/10.21037/atm.2017.11.29>

Introduction

Recent advances in cancer therapy have led to a significant decline in cancer-related mortality. It is estimated that there would be around 18 million cancer survivors in the United States by 2020 (1). Improvement in life expectancy in cancer patients, however, has led to an increase in burden of cardiovascular disease in this cohort of patients, partly

related to comorbidities and partly due to the use of cardio toxic chemotherapeutic regimens. This has led to the inception of cardio-oncology, with many centers developing subspecialty programs to cater to the growing need of these patients. However, the exclusion of cancer patients from cardiovascular clinical trials and heart disease patients from oncology investigations has resulted in a paucity of data to direct clinical decision-making in many cardio-

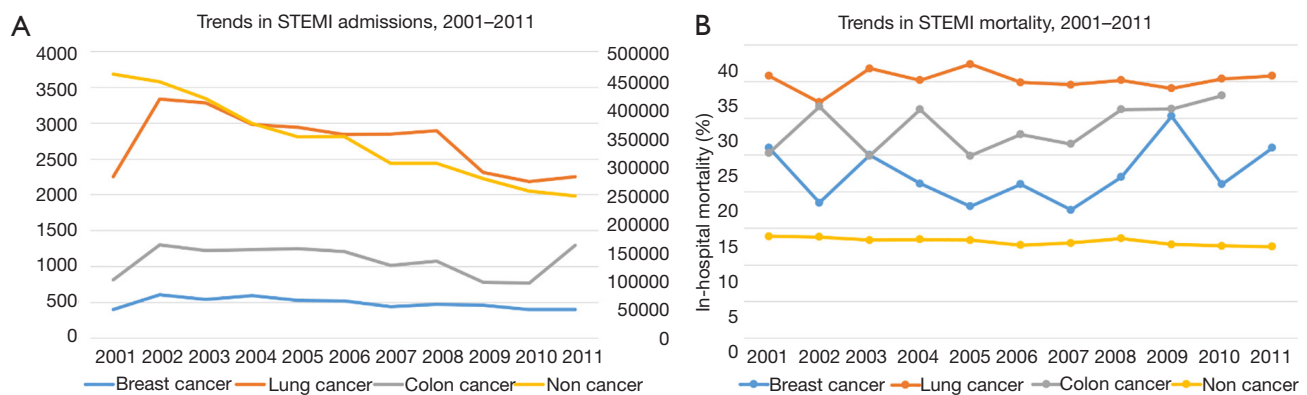


Figure 1 Graphical trends in STEMI incidence and in-hospital mortality in patients with and without cancer between 2001–2011. (A) Trends in STEMI incidence from 2001–2011 among patients with various cancers (primary vertical axis) and general population without cancer (secondary vertical axis); (B) trends in STEMI in-hospital mortality from 2001–2011. STEMI, ST-elevation myocardial infarction.

oncology patients (2). Further, patients with cancer present with multiple comorbidities such as coagulopathy and thrombocytopenia which make incorporation of existing guideline-based treatments challenging. We sought to identify trends in admissions for ST-elevation myocardial infarction (STEMI), utilization of percutaneous coronary intervention (PCI) and in-hospital outcomes in patients with three common cancers (lung, breast, colon) compared to patients without cancer.

Methods

We used the Nationwide Inpatient Sample (NIS) to identify all admissions with ST elevation myocardial infarction (ICD 9 code 410) from the years 2001–2011. The NIS is part of the Agency for Health Care Research and Quality's Healthcare Cost and Utilization Project (HCUP) and is the largest all-payer inpatient care database in the United States, containing data on >7 million hospital stays. It contains data related to hospital admission and discharge from a 20% stratified sample of community hospitals in the United States (3). We used the clinical classification software developed by HCUP to identify the clinical variables for our analyses. Using this dataset, patients with STEMI and a concurrent diagnosis of lung cancer, colon cancer and breast cancer were identified. A cohort of patients admitted for STEMI without any of these cancer diagnoses was identified as the non-cancer group. We evaluated utilization of PCI (angioplasty and/or stenting) and in-hospital outcomes in STEMI patients with various cancers. All statistical analyses were done using SAS

9.4 (Cary, NC).

Results

There were 3,794,385 STEMI admissions during the study period from 2001 to 2011 of which 5,552 (0.15%) patients had active breast cancer, 31,246 (0.82%) had lung cancer and 12,015 (0.32%) patients had colon cancer. Trends in STEMI admissions have been declining in the general population and patients with lung cancer, whereas patients with breast and colon cancer demonstrated a stable trend (*Figure 1*). Utilization of PCI was 30.8% (1,191/3,871), 20.2% (4,541/22,480), and 17.3% (1,716/9,944) in patients with breast, lung and colon cancer, respectively (*Table 1*). Comparatively, among patients without any of these cancers, use of PCI was 49.5%. In-hospital mortality was highest in patients with lung cancer (57.1%) and lowest in patients without cancer (25.7%) with no significant difference in trends (*Figure 1*). Utilization of PCI favorably impacted in-hospital mortality in all patients' groups (*Figure 2*).

Discussion

In the present study, we report a significant incidence of STEMI in patients with the three most prevalent cancers in the United States. Although the incidence of STEMI has been declining in the general population, incidence in patients with breast and colon cancer has remained steady. We also report a significant disparity in utilization of PCI in patients with cancer presenting with STEMI compared

Table 1 Utilization of PCI and in-hospital mortality in STEMI patients with and without cancer

Variables	Breast cancer (N=3,871) (%)		Lung cancer (N=22,480) (%)		Colon cancer (N=9,944) (%)		No cancer (N=2,990,913) (%)	
	PCI	No PCI	PCI	No PCI	PCI	No PCI	PCI	No PCI
No. of patients	1,191 (30.8)	2,680 (69.2)	4,541 (20.2)	17,939 (79.8)	1,716 (17.3)	8,228 (82.7)	1,483,706 (49.6)	1,507,207 (50.4)
In-hospital mortality	90 (7.6)	747* (27.9)	698 (15.4)	7,484* (41.7)	178 (10.4)	2,693* (32.7)	58,037 (3.9)	328,762* (21.8)

*, represents that there is a statistically significant difference in mortality between the PCI and no PCI groups with a P value of <0.001. PCI, percutaneous coronary intervention; STEMI, ST-elevation myocardial infarction.

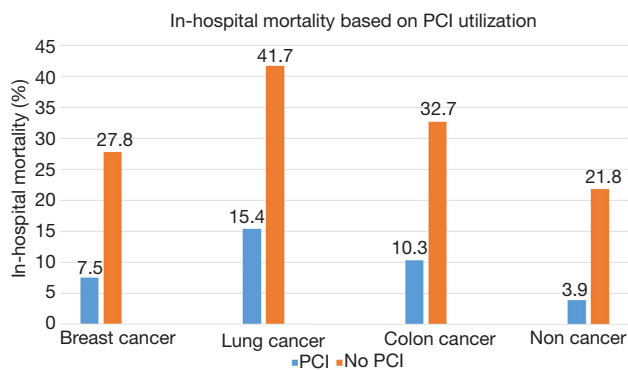


Figure 2 In-hospital mortality in patients with various cancers and general population based on PCI utilization. *, P<0.001 for all of the above comparisons in the chart. PCI, percutaneous coronary intervention.

to the general population. Overall in-hospital mortality was substantially higher in patients with cancer compared to the non-cancer cohort. Even in the cancer cohort, utilization of PCI had a substantial impact on immediate outcomes with higher rates of in-hospital mortality in patients in whom PCI was deferred. This could represent a wide practice variation in the implementation of life saving therapies in patients with cancer.

Coronary artery disease is a frequent comorbidity in patients with various cancers. This is explained partly by the improvement in therapeutic modalities for cancer that prolong life expectancy and in part by direct cardiac and vascular toxic effects of chemotherapy and radiation. In addition, cancer patients have a hypercoagulable state that predisposes to acute thrombotic events. Data on outcomes of cancer patients with STEMI is sparse due to the exclusion of these patients from randomized clinical trials. A few existing registry studies have reported higher mortality rates in patients with cancer presenting with acute coronary syndrome. Velders *et al.* reported a multi-center

study from the Netherlands on outcomes of STEMI in patients with cancer (4). In this prospective registry, patients with cancer had a higher incidence of cardiovascular comorbidities such as peripheral vascular disease, renal insufficiency and cerebrovascular disease. Use of drug-eluting stents and glycoprotein IIb/IIIa inhibitors was significantly lower in patients with cancer. Patients with cancer who had STEMI had significantly higher all-cause mortality at 1-year follow-up compared with those without a history of cancer (in-hospital 9.1% vs. 3.4%, 1-year 17.4% vs. 6.5%). More importantly, this difference in mortality was primarily driven by a higher incidence of cardiac death in cancer patients (in-hospital 8.7% vs. 3.4%, 1-year 10.7% vs. 5.4%). The presence of cancer, specifically diagnosed in 6 months preceding the STEMI, was an independent risk factor for increased cardiac and all-cause mortality at 7 days on multivariate analysis (adjusted hazard ratio =3.34; 95% CI, 1.57–7.08). In a small observational series from Japan, Kurisu *et al.* compared outcomes of acute MI in patients with and without cancer and showed no difference in coronary revascularization, discharge medications, stent selection or cardiovascular outcomes between the two groups (5). Yusuf *et al.* reported a single center experience outcomes of 456 cancer patients with an acute coronary syndrome (STEMI 15%) over a 6-year study period (6). In their series, PCI was utilized in only 3.3% of cancer patients, and the 1-year mortality was 78% in patients with STEMI (6).

Patients with active cancer presenting with STEMI represent a challenging cohort. Complications related to the underlying cancer such as coagulopathy, thrombocytopenia, anemia, organ dysfunction, and anticipation of other therapeutic procedures factor into clinical decision making. Patients with advanced cancer are particularly challenging as long-term goals of care have to be considered. In a recent expert consensus statement on the management of cancer patients in the catheterization lab, it was recommended

to consider PCI in cancer patients with STEMI and high risk non-STEMI even when life expectancy is <1 year and to use drug-eluting stents if the platelet count is above 30,000/mL (7). In addition to prolonging survival, revascularization may also be a palliative option to control symptoms in patients with severe angina pectoris.

Our study is the largest one reporting contemporary outcomes of STEMI in cancer patients. Strengths of our study include analysis of a nationwide cohort over a decade and a large sample size. However, we acknowledge several limitations. Data on cancer stage, treatment strategies, hematological parameters, and anticipated procedures were not available. All these factors may play a significant role in decision making regarding PCI. We assessed only in-hospital mortality, and data on long-term outcomes were unavailable.

In summary, we report a relatively lower rate of PCI utilization in cancer patients with STEMI. With lack of clinical trial data on management of STEMI in patients with various cancers and with improvements in cancer survivors overall, further studies are required to identify gaps in knowledge in appropriate selection of cancer patients for PCI.

Acknowledgements

None.

Footnote

Conflicts of Interest: The authors have no conflicts of interest

to declare.

References

1. Siegel RL, Miller KD, Jemal A. Cancer and disease statistics, 2015. *CA Cancer J Clin* 2015;65:5-29.
2. Barac A, Murtagh G, Carver JR, et al. Cardiovascular health of patients with cancer and cancer survivors: a roadmap to the next level. *J Am Coll Cardiol* 2015; 65:2739-46.
3. Steiner C, Elixhauser A, Schnaier J. The healthcare cost and utilization project: an overview. *Eff Clin Pract* 2002;5:143-51.
4. Velders MA, Boden H, Hofma SH, et al. Outcome after ST elevation myocardial infarction in patients with cancer treated with primary percutaneous coronary intervention. *Am J Cardiol* 2013;112:1867-72.
5. Kurisu S, Iwasaki T, Ishibashi K, et al. Comparison of treatment and outcome of acute myocardial infarction between cancer patients and non-cancer patients. *Int J Cardiol* 2013;167:2335-7.
6. Yusuf SW, Daraban N, Abbasi N, et al. Treatment and outcomes of acute coronary syndrome in the cancer population. *Clin Cardiol* 2012;35:443-50.
7. Iliescu CA, Grines CL, Herrmann J, et al. SCAI expert consensus statement: evaluation, management, and special considerations of cardio-oncology patients in the cardiac catheterization laboratory (endorsed by the cardiological society of india, and sociedad Latino Americana de Cardiologia intervencionista). *Catheter Cardiovasc Interv* 2016;87:E202-23.

Cite this article as: Pothineni NV, Shah NN, Rochlani Y, Saad M, Kovelamudi S, Marmagkiolis K, Bhatti S, Cilingiroglu M, Aronow WS, Hakeem A. Temporal trends and outcomes of acute myocardial infarction in patients with cancer. *Ann Transl Med* 2017;5(24):482. doi: 10.21037/atm.2017.11.29