

Touro Scholar

NYMC Faculty Publications

Faculty

6-12-2016

Lack of an Association or an Inverse Association Between Low-Density-Lipoprotein Cholesterol and Mortality in the Elderly: A Systematic Review

Uffe Ravnskov

Rokura Hama

Tomohito Hamazaki

Paul J. Rosch

New York Medical College

Tore Schersten

See next page for additional authors

Follow this and additional works at: https://touro scholar.touro.edu/nymc_fac_pubs



Part of the [Epidemiology Commons](#), and the [Geriatrics Commons](#)

Recommended Citation

Ravnskov, U., Diamond, D. M., Hama, R., Hamazaki, T., Hammarskjold, B., Hynes, N., . . . Sundberg, R. (2016). Lack of an association or an inverse association between low-density-lipoprotein cholesterol and mortality in the elderly: A systematic review. *BMJ Open*, 6(6), e010401. doi:10.1136/bmjopen-2015-010401

This Article is brought to you for free and open access by the Faculty at Touro Scholar. It has been accepted for inclusion in NYMC Faculty Publications by an authorized administrator of Touro Scholar. For more information, please contact daloia@nymc.edu.

Authors

Uffe Ravnskov, Rokura Hama, Tomohito Hamazaki, Paul J. Rosch, Tore Schersten, and Ralf Sundberg

BMJ Open Lack of an association or an inverse association between low-density-lipoprotein cholesterol and mortality in the elderly: a systematic review

Uffe Ravnskov,¹ David M Diamond,² Rokura Hama,³ Tomohito Hamazaki,⁴ Björn Hammarskjöld,⁵ Niamh Hynes,⁶ Malcolm Kendrick,⁷ Peter H Langsjoen,⁸ Aseem Malhotra,⁹ Luca Mascitelli,¹⁰ Kilmer S McCully,¹¹ Yoichi Ogushi,¹² Harumi Okuyama,¹³ Paul J Rosch,¹⁴ Tore Schersten,¹⁵ Sherif Sultan,⁶ Ralf Sundberg¹⁶

To cite: Ravnskov U, Diamond DM, Hama R, *et al*. Lack of an association or an inverse association between low-density-lipoprotein cholesterol and mortality in the elderly: a systematic review. *BMJ Open* 2016;**6**: e010401. doi:10.1136/bmjopen-2015-010401

► Prepublication history for this paper is available online. To view these files please visit the journal online (<http://dx.doi.org/10.1136/bmjopen-2015-010401>).

Received 5 November 2015

Revised 21 April 2016

Accepted 11 May 2016



CrossMark

For numbered affiliations see end of article.

Correspondence to

Dr Uffe Ravnskov;
ravnskov@tele2.se

ABSTRACT

Objective: It is well known that total cholesterol becomes less of a risk factor or not at all for all-cause and cardiovascular (CV) mortality with increasing age, but as little is known as to whether low-density lipoprotein cholesterol (LDL-C), one component of total cholesterol, is associated with mortality in the elderly, we decided to investigate this issue.

Setting, participants and outcome measures:

We sought PubMed for cohort studies, where LDL-C had been investigated as a risk factor for all-cause and/or CV mortality in individuals ≥ 60 years from the general population.

Results: We identified 19 cohort studies including 30 cohorts with a total of 68 094 elderly people, where all-cause mortality was recorded in 28 cohorts and CV mortality in 9 cohorts. Inverse association between all-cause mortality and LDL-C was seen in 16 cohorts (in 14 with statistical significance) representing 92% of the number of participants, where this association was recorded. In the rest, no association was found. In two cohorts, CV mortality was highest in the lowest LDL-C quartile and with statistical significance; in seven cohorts, no association was found.

Conclusions: High LDL-C is inversely associated with mortality in most people over 60 years. This finding is inconsistent with the cholesterol hypothesis (ie, that cholesterol, particularly LDL-C, is inherently atherogenic). Since elderly people with high LDL-C live as long or longer than those with low LDL-C, our analysis provides reason to question the validity of the cholesterol hypothesis. Moreover, our study provides the rationale for a re-evaluation of guidelines recommending pharmacological reduction of LDL-C in the elderly as a component of cardiovascular disease prevention strategies.

INTRODUCTION

Rationale

For decades, the mainstream view has been that an elevated level of total cholesterol

Strengths and limitations of this study

- This is the first systematic review of cohort studies where low-density lipoprotein cholesterol (LDL-C) has been analysed as a risk factor for all-cause and/or cardiovascular mortality in elderly people.
- Lack of an association or an inverse association between LDL-C and mortality was present in all studies.
- We may not have included studies where an evaluation of LDL-C as a risk factor for mortality was performed but where it was not mentioned in the title or in the abstract.
- We may have overlooked relevant studies because we have only searched PubMed.
- Minor errors may be present because some of the authors may not have adjusted LDL-C by appropriate risk factors.
- Some of the participants with high LDL-C may have started statin treatment during the observation period and, in this way, may have added a longer life to the group with high LDL-C and some of them may have started with a diet able to influence the risk of mortality.
- We may have overlooked a small number of relevant studies because we only searched papers in English.

(TC) is a primary cause of atherosclerosis and cardiovascular disease (CVD). There are several contradictions to this view, however. No study of unselected people has found an association between TC and degree of atherosclerosis.¹ Moreover, in most of the Japanese epidemiological studies, high TC is not a risk factor for stroke, and further, there is an inverse association between TC and all-cause mortality, irrespective of age and sex.²

In a recent meta-analysis performed by the Prospective Studies Collaboration, there was



an association between TC and CV mortality in all ages and in both sexes.³ However, even in this analysis, the risk decreased with increasing age and became minimal after the age of 80 years. Since atherosclerosis and CVD are mainly diseases of the elderly, the cholesterol hypothesis predicts that the association between CV mortality and TC should be at least as strong in the elderly as in young people. There may be a confounding influence in these studies, however, because TC includes high-density lipoprotein cholesterol (HDL-C), and multiple studies have shown that a high level of HDL-C is associated with a lower risk of CVD.

Objectives

We examined the literature assessing low-density lipoprotein cholesterol (LDL-C) as a risk factor for mortality in elderly people. Since the definition of CVD varies considerably in the scientific literature, we have chosen to focus on the association between LDL-C and all-cause and CVD mortality, because mortality has the least risk of bias among all outcome measures. If Goldstein and Brown's recent statement that LDL-C is 'the essential causative agent' of CVD⁴ is correct, then we should find that LDL-C is a strong risk factor for mortality in elderly people.

METHODS

Search strategy

UR and RS searched PubMed independently from initial to 17 December 2015. The following keywords were used: 'lipoprotein AND (old OR elderly) AND mortality NOT animal NOT trial'. We also retrieved the references in the publications so as not to miss any relevant studies. The search was limited to studies in English.

Inclusion and exclusion criteria

All included studies should meet the following criteria: the study should be a cohort study of people aged 60 years or older selected randomly from the general population, or a study where the authors had found no significant differences between the participants and the source population's demographic characteristics. The studies should include an initial assessment of LDL-C levels, the length of the observation time and information about all-cause and/or cardiovascular mortality at the end of follow-up. The studies should also include information about the association between LDL-C and all-cause and/or CVD mortality. We excluded studies that did not represent the general population (eg, case-control studies; case reports; studies that included patients only); studies where data about elderly people were not given separately, and studies without multivariate correction for the association between LDL-C and all-cause and/or CV mortality. We accepted studies where the authors had excluded patients with serious diseases or individuals who had died during the first year.

Study selection, data items and extraction

Studies where the title or abstract indicated that they might include LDL-C data of elderly people, were read in full, and the relevant data were extracted by at least three of the authors, for example, year of publication, total number of participants, sex, length of observation time, exclusion criteria, LDL-C measured at the start and the association between initial LDL-C and risk of all-cause and/or CV mortality at follow-up. When more than one adjusted HR was reported, the HR with the most fully adjusted model was selected.

Quality assessment

The design of the study satisfies almost all points of reliability and validity according to the Newcastle Ottawa Scale as regards selection, comparability and exposure.⁵ Thus, all studies represented elderly people only; ascertainment of exposure (eg, measurement of LDL-C) was present in all studies, and outcome was unknown at the start. It can be questioned if all of the studies represented the general population because, as shown below, in some of them various types of disease groups were excluded.

RESULTS

Study selection

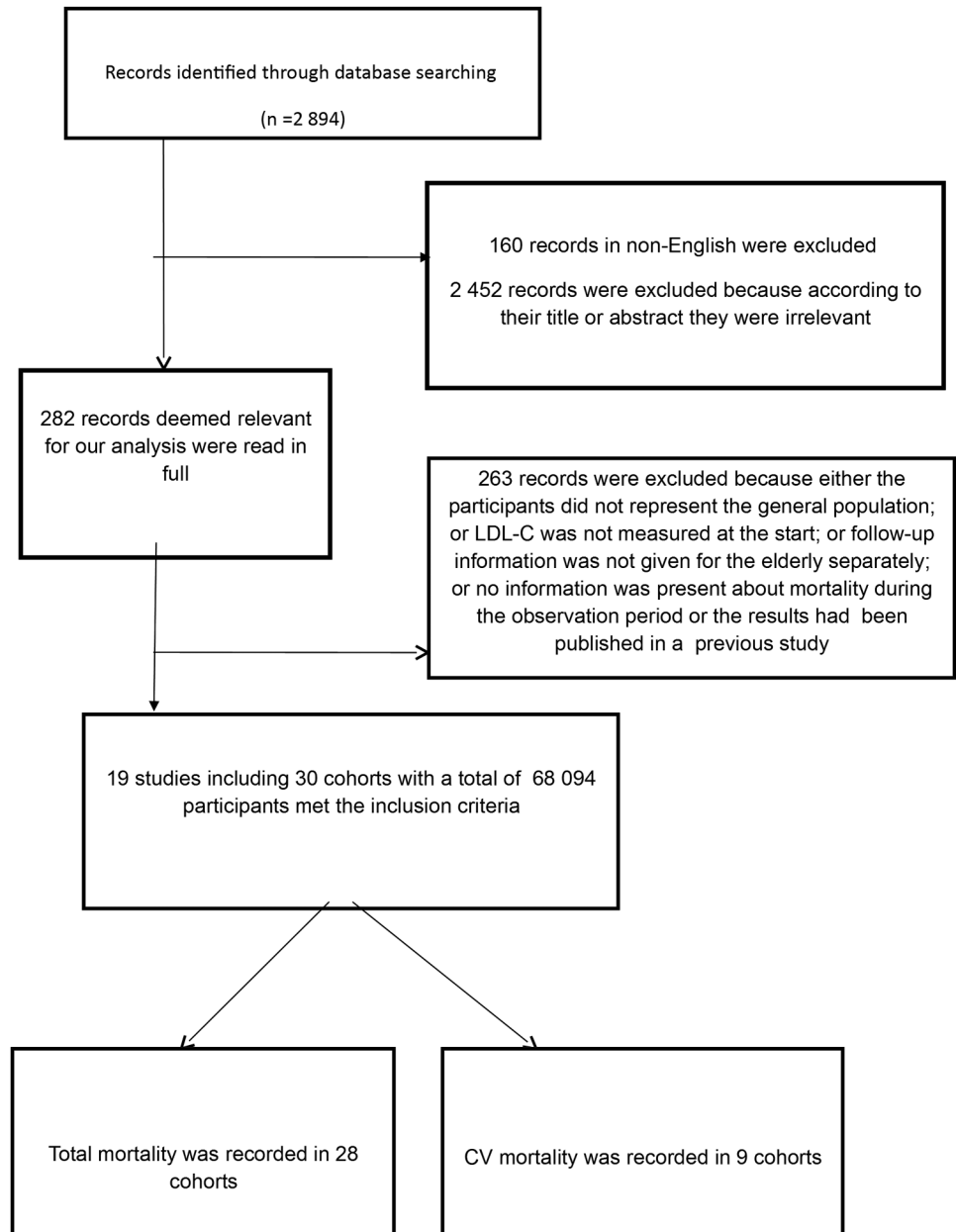
Our search gave 2894 hits. We excluded 160 studies, which were not in English, and 2452 studies because, judged from the abstract, it was obvious that they were irrelevant.

The rest of the papers were read in full; 263 of these studies were excluded for the following reasons: (1) the participants did not represent the general population; (2) LDL-C was not measured at the start; (3) follow-up information was not given for the elderly separately; or (4) no information was present about mortality during the observation period ([figure 1](#)). One of the studies⁶ was excluded because it included the same individuals as in a previous study.⁷

Study characteristics

The remaining 19 studies including 30 cohorts with a total of 68 094 participants met the inclusion criteria ([figure 1](#)). All-cause mortality was recorded in 28 cohorts. In 16 of these cohorts (representing 92% of the individuals), the association was inverse and with statistical significance in 14; in 1 of the cohorts, the association was mirror-J-formed with the lowest risk in the highest quartile; in the rest of the papers, no association was found. CV mortality was recorded in nine cohorts; in one of them, the association was almost U-shaped with the lowest risk in the highest quartile (curvilinear fit: $p=0.001$); in one of them, the association was mirror-J-formed and also with the lowest risk in the highest quartile (curvilinear fit: $p=0.03$); in the other seven cohorts, no association was found ([table 1](#)).

Figure 1 Flow Chart. CV, cardiovascular; LDL-C, low-density lipoprotein cholesterol.



Risk of bias across studies

One explanation for the increased risk of mortality among people with low cholesterol is that serious diseases may lower cholesterol soon before death occurs. Evidence to support this hypothesis may be obtained from 10 of the studies in which no exclusions were made for individuals with terminal illnesses. However, in four of the studies, participants with a terminal illness or who had died during the first observation year were excluded. In one of those studies,⁸ LDL-C was not associated with all-cause mortality; in the three others,^{16 20 24} which included more than 70% of the total number of participants in our review, LDL-C was inversely associated with all-cause mortality and with statistical significance. Thus, there is little support for the hypothesis that our analysis is biased by end of life changes in LDL-C levels.

It is also potentially relevant that all studies did not correct for the same risk factors, and some of them did not inform the reader about which risk factors they corrected for. However, taking all studies together, 50 different risk factors were corrected for in the Cox analyses (table 2).

It is worth considering that some of the participants with high LDL-C may have started statin treatment during the observation period. Such treatment may have increased the lifespan for the group with high LDL-C. However, any beneficial effects of statins on mortality would have been minimal because most statin trials have had little effect on CVD and all-cause mortality, with a maximum reduction of mortality of two percentage points. It is therefore relevant that the 4-year mortality among those with the highest LDL-C in the included cohorts was up to 36% lower than among those with the

Table 1 Association between LDL-C and all-cause mortality and CVD mortality, respectively, in 19 studies including 30 cohorts with 68 094 individuals from the general population above the age of 60 years

Authors	Race if indicated	Sex	N	Age; years	Obs. Years	All-cause mortality LDL-C tertiles or quartiles (HRs)				CV mortality	Exclusion criteria
						I	II	III	IV		
Zimetbaum <i>et al</i> ⁶		MF	350	75–85	6, 3	No association				NI	Terminal illness, dementia
Kronmal <i>et al</i> ⁹		MF	747	66–75	10	No association				NI	None
			176	>75		No association				NI	
Räihä <i>et al</i> ¹⁰		MF	347	≥65	11	NI				No association	Living in an institution
Fried <i>et al</i> ⁷		MF	5201	≥65	4.8	1.0	?	?	0.66 (significant)	NI	Wheelchair user; cancer treatment
Chyou and Eaker ¹¹		M	367	≥65	8–10	No association				NI	None
		F	622			No association					
Weverling-Rijnsburger <i>et al</i> ¹²		MF	599	≥85	4	1.0	0.57	0.71		No association	None
									p for trend*		
Schupf <i>et al</i> ¹³		MF	2277	≥65	3	1.0	0.79	0.63	0.53	NI	Dementia
Tikhonoff <i>et al</i> ¹⁴		M	1233	≥65	11, 1	Mirror-J-formed association with the highest risk in the lowest quartile				Almost U-formed association with the highest risk in the lowest quartile*	Dementia
		F	1887			Inverse association*				Mirror-J-formed association with the highest risk in the lowest quartile*	
Störk <i>et al</i> ¹⁵		M	403	>70	4	No association				No association	None
Akerblom <i>et al</i> ¹⁶	Caucasians	MF	705	≥65	3.5	1.0	0.89	0.72	0.56*	NI	Dementia, first year deaths
	African-Americans	MF	797			1.0	0.79	0.58	0.53*		
	Hispanics	MF	1054			1.0	0.79	0.79	0.71		
Upmeier <i>et al</i> ¹⁷		MF	1032	70	12	No association				No association	None
Nilsson <i>et al</i> ¹⁸		M	210	75	10	No association				NI	None
		F	222			No association					
Werle <i>et al</i> ¹⁹		MF	187	≥80	8, 7	No association				No association	None
Bathum <i>et al</i> ²⁰ †		M	13 733	60–70	1–9	1.0	0.67***	0.49***	0.45***	NI	Terminal disease, CVD, diabetes, patients with a prescription of statin during the last year before test date
			7493	≥70		1.0	0.71***	0.60***	0.52***		
		F	14 298	60–70		1.0	0.56***	0.45***	0.47***		
			9142	≥70		1.0	0.66***	0.52***	0.46***		
Linna <i>et al</i> ²¹		MF	1260	≥64	10	Inverse association**				NI	None
Jacobs <i>et al</i> ²²		MF	512	78–85	8	No association				NI	None
			702	85–90	5	No association					
Takata <i>et al</i> ²³		MF	207	85	10	Survivors 3.2 mmol/L; non-survivors: 2.9 mmol/L**				No association	None
Lv <i>et al</i> ²⁴		M	266	≥80	3	1.0	0.67	0.43	0.41*	NI	First year deaths
		F	596			1.0	0.69*	0.57**	0.59*		
		MF				1.0	0.72*	0.59**	0.60*		
Blekkhorst <i>et al</i> ²⁵		F	1469	≥70	10	NI				No association	None

In the study by Fried *et al*, degree of significance was not reported.

*p<0.05; **p<0.01; ***p<0.001.

†HR for 7415 men and 8314 women on statin treatment was 0.63 and 0.61, respectively.

F, females; M, males; NI, no information.

Table 2 Factors corrected for in the multifactorial analyses of each study

Authors	Factors adjusted for
Zimetbaum <i>et al</i>	Age, smoking, health self-rating, BMI, BP, diabetes, MI and IQ.
Kronmal <i>et al</i>	Age, sex, BP, BMI, BMI squared, smoking.
Räihä <i>et al</i>	Age, sex, smoking, alcohol use, BMI, CHD, BP and diabetes.
Fried <i>et al</i>	Race, height, hip and waist circumference, BMI, smoking, diastolic BP, antihypertensive and lipid-lowering treatment, TC, HDL-C, TG, diabetes, fasting insulin, factor VII and VIII, serum potassium and uric acid, asthma, emphysema, angina, MI, stroke, claudication, arthritis, renal disease, cancer, hearing and visual impairment, FEV, mitral stenosis and regurgitation, carotid stenosis
Chyou and Eaker	Age, sex, CHD, stroke, cancer, diabetes, BP, BMI, smoking, alcohol consumption
Weverling-Rijnsburger <i>et al</i>	Comorbidities, BMI, use of β -blocking agents, thyroid dysfunction
Schupf <i>et al</i>	Age, sex, ethnic group, BMI, level of education, APOE genotype, diabetes, heart disease, stroke, cancer, smoking
Tikhonoff <i>et al</i>	Age, BP, pulse rate, BMI, CV events, smoking, alcohol intake, diabetes, serum creatinine and uric acid.
Störk <i>et al</i>	Cox regression analysis. No details
Akerblom <i>et al</i>	Age, sex, education, BMI, APOE genotype, heart disease, BP, diabetes, stroke, dementia, smoking.
Upmeier <i>et al</i>	Gender, BMI, smoking, angina pectoris, stroke, diabetes, hypertension, cancer
Nilsson <i>et al</i>	BMI, smoking, non-HDL-C, TG, BP, diabetes, previous MI
Werle <i>et al</i>	Factors that showed a trend for association in the univariate analyses, well-known risk factors for total mortality or cardiovascular mortality.
Bathum <i>et al</i>	Cox regression analysis. No details
Linna <i>et al</i>	Age, sex, BMI, smoking, BP, diabetes
Jacobs <i>et al</i>	Statin treatment, sex, CHD, BP, neoplasm, self-rated health, smoking, albumin, BMI, triglycerides.
Takata <i>et al</i>	Sex, smoking, alcohol intake, stroke, heart disease, serum albumin, BMI, systolic BP
Lv <i>et al</i> 2015	Age, sex, marital status, smoking, alcohol drinking, tea drinking, central obesity, cognitive impairment, daily activity, blindness, anaemia, BT, diabetes, CKD, HDL-C
Blekkenhorst <i>et al</i>	Age, BMI, physical activity, renal function, smoking, diabetes, CVD, low-dose aspirin, antihypertensive and statin medication, energy intake, SFA

In studies not corrected for age, all participants were of the same age.

BMI, body mass index; BP, blood pressure; CHD, coronary heart disease; CKD, chronic kidney disease; CRP, C reactive protein; CVD, cardiovascular disease; FEV, forced expiratory volume; HDL-C, high-density lipoprotein cholesterol; IMT, intima-media thickness; MI, myocardial infarction; SFA, superficial femoral artery; TG, tryglicerides.

lowest LDL-C. Furthermore, in the largest study²⁰ that included about two-thirds of the total number of participants in our study, the risk was lower among those with the highest LDL-C than among those on statin treatment.

It is also possible that those with the highest LDL-C were put on a different diet than those with low LDL-C. However, this potential bias in mortality outcomes could have gone in both directions. Some of the individuals with high LDL-C may have followed the official dietary guidelines and exchanged saturated fat with vegetable oils rich in linoleic acid. In a recent study, the authors reported that among participants who were older than 65 at baseline, a 30 mg/dL decrease in serum cholesterol was associated with a higher risk of death (HR 1.35, 95% CI 1.18 to 1.54).²⁶ If applied to the general population, this finding suggests that the conventional dietary treatment for high cholesterol with vegetable oil replacing saturated fat may actually increase mortality in those individuals with high LDL-C. Thus, the lack of an association between LDL-C and mortality may have been even stronger than

reported since the dietary intervention may have been counterproductive.

Finally, it is potentially relevant that we limited our literature search to PubMed. In preliminary searches with PubMed, OVID and EMBASE, we identified 17 relevant studies in PubMed, but only 2 in OVID and EMBASE, and these 2 studies were found in PubMed as well. Therefore, it is highly unlikely that there are studies with findings with divergent results from those we have reported here, as all of them reported either no association or an inverse association between LDL-C and mortality.

DISCUSSION

Assessments of the association between serum cholesterol and mortality have been studied for decades, and extensive research has shown a weak association between total cholesterol and mortality in the elderly; several studies have even shown an inverse association. It is therefore surprising that there is an absence of a review of the literature on mortality and levels of LDL-C, which is routinely



referred to as a causal agent in producing CVD⁴ and is a target of pharmacological treatment of CVD.

Our literature review has revealed either a lack of an association or an inverse association between LDL-C and mortality among people older than 60 years. In almost 80% of the total number of individuals, LDL-C was inversely associated with all-cause mortality and with statistical significance.

These findings provide a paradoxical contradiction to the cholesterol hypothesis. As atherosclerosis starts mainly in middle-aged people and becomes more pronounced with increasing age, the cholesterol hypothesis would predict that there should be a cumulative atherosclerotic burden, which would be expressed as greater CVD and all-cause mortality, in elderly people with high LDL-C levels.

Our results raise several relevant questions for future research. Why is high TC a risk factor for CVD in the young and middle-aged, but not in elderly people? Why does a subset of elderly people with high LDL-C live longer than people with low LDL-C? If high LDL-C is potentially beneficial for the elderly, then why does cholesterol-lowering treatment lower the risk of cardiovascular mortality? In the following we have tried to address some of these questions.

Inverse causation

A common argument to explain why low lipid values are associated with an increased mortality is inverse causation, meaning that serious diseases cause low cholesterol. However, this is not a likely explanation, because in five of the studies in [table 1](#) terminal disease and mortality during the first years of observation were excluded. In spite of that, three of them showed that the highest mortality was seen among those with the lowest initial LDL-C with statistical significance.^{18 20 24}

Is high LDL-C beneficial?

One hypothesis to address the inverse association between LDL-C and mortality is that low LDL-C increases susceptibility to fatal diseases. Support for this hypothesis is provided by animal and laboratory experiments from more than a dozen research groups which have shown that LDL binds to and inactivates a broad range of microorganisms and their toxic products.²⁷ Diseases caused or aggravated by microorganisms may therefore occur more often in people with low cholesterol, as observed in many studies.²⁸ In a meta-analysis of 19 cohort studies, for instance, performed by the National Heart, Lung and Blood Institute and including 68 406 deaths, TC was inversely associated with mortality from respiratory and gastrointestinal diseases, most of which are of an infectious origin.²⁹ It is unlikely that these diseases caused the low TC, because the associations remained after the exclusion of deaths occurring during the first 5 years. In a study by Iribarren *et al*, more than 100 000 healthy individuals were followed for

15 years. At follow-up, those whose initial cholesterol level was lowest at the start had been hospitalised significantly more often because of an infectious disease that occurred later during the 15-year follow-up period.³⁰ This study provides strong evidence that low cholesterol, recorded at a time when these people were healthy, could not have been caused by a disease they had not yet encountered.

Another explanation for an inverse association between LDL-C and mortality is that high cholesterol, and therefore high LDL-C, may protect against cancer. The reason may be that many cancer types are caused by viruses.³¹ Nine cohort studies including more than 140 000 individuals followed for 10–30 years have found an inverse association between cancer and TC measured at the start of the study, even after excluding deaths that occurred during the first 4 years.³² Furthermore, cholesterol-lowering experiments on rodents have resulted in cancer,³³ and in several case–control studies of patients with cancer and controls matched for age and sex, significantly more patients with cancer have been on cholesterol-lowering treatment.³² In agreement with these findings, cancer mortality is significantly lower in individuals with familial hypercholesterolaemia.³⁴

That high LDL-C may be protective is in accordance with the finding that LDL-C is lower than normal in patients with acute myocardial infarction. This has been documented repeatedly without a reasonable explanation.^{35–37} In one of the studies,³⁷ the authors concluded that LDL-C evidently should be lowered even more, but at a follow-up 3 years later mortality was twice as high among those whose LDL-C had been lowered the most compared with those whose cholesterol was unchanged or lowered only a little. If high LDL-C were the cause, the effect should have been the opposite.

CONCLUSIONS

Our review provides the first comprehensive analysis of the literature about the association between LDL-C and mortality in the elderly. Since the main goal of prevention of disease is prolongation of life, all-cause mortality is the most important outcome, and is also the most easily defined outcome and least subject to bias. The cholesterol hypothesis predicts that LDL-C will be associated with increased all-cause and CV mortality. Our review has shown either a lack of an association or an inverse association between LDL-C and both all-cause and CV mortality. The cholesterol hypothesis seems to be in conflict with most of Bradford Hill's criteria for causation, because of its lack of consistency, biological gradient and coherence. Our review provides the basis for more research about the cause of atherosclerosis and CVD and also for a re-evaluation of the guidelines for cardiovascular prevention, in particular because the benefits from statin treatment have been exaggerated.^{38–40}

Author affiliations

- ¹Magle Stora Kyrkogata 9, 22350 Lund, Sweden
²Department of Psychology, Department of Molecular Pharmacology and Physiology, Center for Preclinical and Clinical Research on PTSD, University of South Florida, Tampa, Florida, USA
³NPO Japan Institute of Pharmacovigilance, Osaka, Japan
⁴Department of Internal Medicine, Toyama Jonan Onsen Daini Hospital, University of Toyama, Toyama City, Japan
⁵Strömstad Academy, Strömstad, Sweden
⁶Western Vascular Institute, University Hospital Galway & Galway Clinic, National University of Ireland & Royal college of Surgeons of Ireland affiliated Hospital, Galway, Ireland
⁷East Cheshire Trust, Macclesfield District General Hospital, Macclesfield, Cheshire, England
⁸Solo Practice in Cardiology, Tyler, Texas 75701, USA
⁹Department of cardiology, Frimley Park Hospital, Portsmouth road, Surrey GU16 7UJ, UK
¹⁰Medical Service, Comando Brigata Alpina "Julia"/Multinational Land Force, Udine, Italy
¹¹Pathology and Laboratory Medicine Service, VA Boston Healthcare System, West Roxbury; Harvard Medical School, Boston, Massachusetts
¹²Tokai University, Daikancho, Hiratsuka, Kanagawa, Japan 254-0807
¹³Nagoya City University and Institute for Consumer Science and Human Life, Kinjo Gakuin University, Nagoya, Japan
¹⁴New York Medical College; The American Institute of Stress
¹⁵Sahlgren's Academy, University of Gothenburg, Sweden, and Colombia University, NY, USA
¹⁶Slottsstadens Läkarhus, Malmö, Gothenburg, Sweden

Acknowledgements The study has been supported by a grant from Western Vascular Institute.

Contributors UR and RS performed the paper search independently. UR wrote the first draft of the manuscript. All authors have read the papers and made improvements of the content and the wording. The relevant data from each study have been examined by at least three of the authors.

Competing interests TH has received speaker fees from Nissui Pharmaceutical and Nippon Suisan Kaisha. KSM has a US patent for a homocysteine-lowering protocol. RH, HO, RS and UR have written books with criticism of the cholesterol hypothesis.

Provenance and peer review Not commissioned; externally peer reviewed.

Open Access This is an Open Access article distributed in accordance with the Creative Commons Attribution Non Commercial (CC BY-NC 4.0) license, which permits others to distribute, remix, adapt, build upon this work non-commercially, and license their derivative works on different terms, provided the original work is properly cited and the use is non-commercial. See: <http://creativecommons.org/licenses/by-nc/4.0/>

REFERENCES

- Ravnskov U. Is atherosclerosis caused by high cholesterol? *QJM* 2002;95:397–403.
- Hamazaki T, Okuyama H, Ogushi Y, *et al.* Towards a paradigm shift in cholesterol treatment—a re-examination of the cholesterol issue in Japan. *Ann Nutr Metab* 2015;66(Suppl 4):1–116.
- Prospective Studies Collaboration Lewington S, Whitlock G, Clarke R, *et al.* Blood cholesterol and vascular mortality by age, sex, and blood pressure: a meta-analysis of individual data from 61 prospective studies with 55,000 vascular deaths. *Lancet* 2007;370:1829–39.
- Goldstein JL, Brown MS. A century of cholesterol and coronaries: from plaques to genes to statins. *Cell* 2015;161:161–72.
- Stang A. Critical evaluation of the Newcastle-Ottawa scale for the assessment of the quality of nonrandomized studies in meta-analyses. *Eur J Epidemiol* 2010;25:603–5.
- Psaty BM, Anderson M, Kronmal RA, *et al.* The association between lipid levels and the risks of incident myocardial infarction, stroke, and total mortality: the Cardiovascular Health Study. *J Am Geriatr Soc* 2004;52:1639–47.
- Fried LP, Kronmal RA, Newman AB, *et al.* Risk factors for 5-year mortality in older adults: the Cardiovascular Health Study. *JAMA* 1998;279:585–92.
- Zimetbaum P, Frishman WH, Ooi WL, *et al.* Plasma lipids and lipoproteins and the incidence of cardiovascular disease in the very elderly: the Bronx Aging Study. *Arterioscler Thromb* 1992;12:416–23.
- Kronmal RA, Cain KC, Ye Z, *et al.* Total serum cholesterol levels and mortality risk as a function of age. A report based on the Framingham data. *Arch Intern Med* 1993;153:1065–73.
- Räihä I, Marniemi J, Puukka P, *et al.* Effect of serum lipids, lipoproteins, and apolipoproteins on vascular and nonvascular mortality in the elderly. *Arterioscler Thromb Vasc Biol* 1997;17:1224–32.
- Chyou PH, Eaker ED. Serum cholesterol concentrations and all-cause mortality in older people. *Age Ageing* 2000;29:69–74.
- Weverling-Rijnsburger AW, Jonkers IJ, van Exel E, *et al.* High-density vs low-density lipoprotein cholesterol as the risk factor for coronary artery disease and stroke in old age. *Arch Intern Med* 2003;163:1549–54.
- Schupf N, Costa R, Luchsinger J, *et al.* Relationship between plasma lipids and all-cause mortality in nondemented elderly. *J Am Geriatr Soc* 2005;53:219–26.
- Tikhonoff V, Casiglia E, Mazza A, *et al.* Low-density lipoprotein cholesterol and mortality in older people. *J Amer Geriatr Soc* 2005;53:2159–64.
- Störk S, Feelders RA, van den Beld AW, *et al.* Prediction of mortality risk in the elderly. *Am J Med* 2006;119:519–25.
- Akerblom JL, Costa R, Luchsinger JA, *et al.* Relation of plasma lipids to all-cause mortality in Caucasian, African-American and Hispanic elders. *Age Ageing* 2008;37:207–13.
- Upmeier E, Lavonius S, Lehtonen A, *et al.* Serum lipids and their association with mortality in the elderly: a prospective cohort study. *Aging Clin Exp Res* 2009;21:424–30.
- Nilsson G, Ohrvik J, Lönnberg I, *et al.* Ten-year survival in 75-year-old men and women: predictive ability of total cholesterol, HDL-C, and LDL-C. *Curr Gerontol Geriatr Res* 2009;158425. doi:10.1155/2009/158425
- Werle MH, Moriguchi E, Fuchs SC, *et al.* Risk factors for cardiovascular disease in the very elderly: results of a cohort study in a city in southern Brazil. *Eur J Cardiovasc Prev Rehabil* 2011;18:369–77.
- Bathum L, Depont Christensen R, Engers Pedersen L, *et al.* Association of lipoprotein levels with mortality in subjects aged 50 +without previous diabetes or cardiovascular disease: a population-based register study. *Scand J Prim Health Care* 2013;31:172–80.
- Linna M, Ahotupa M, Löppönen MK, *et al.* Circulating oxidised LDL lipids, when proportioned to HDL-C emerged as a risk factor of all-cause mortality in a population-based survival study. *Age Ageing* 2013;42:110–13.
- Jacobs JM, Cohen A, Ein-Mor E, *et al.* Cholesterol, statins, and longevity from age 70 to 90 years. *J Am Med Dir Assoc* 2013;14:883–8.
- Takata Y, Ansai T, Soh I, *et al.* Serum total cholesterol concentration and 10-year mortality in an 85-year-old population. *Clin Interv Aging* 2014;9:293–300.
- Lv YB, Yin ZX, Chei CL, *et al.* Low-density lipoprotein cholesterol was inversely associated with 3-year all-cause mortality among Chinese oldest old: data from the Chinese Longitudinal Healthy Longevity Survey. *Atherosclerosis* 2015;239:137–42.
- Bleckenhorst LC, Prince RL, Hodgson JM, *et al.* Dietary saturated fat intake and atherosclerotic vascular disease mortality in elderly women: a prospective cohort study. *Am J Clin Nutr* 2015;101:1263–8.
- Ramsden CE, Zamora D, Majchrzak-Hong S, *et al.* Re-evaluation of the traditional diet-heart hypothesis: analysis of recovered data from Minnesota Coronary Experiment (1968–73). *BMJ* 2016;353:i1246.
- Ravnskov U, McCully KS. Vulnerable plaque formation from obstruction of vasa vasorum by homocysteinylated and oxidized lipoprotein aggregates complexed with microbial remnants and LDL autoantibodies. *Ann Clin Lab Sci* 2009;39:3–16.
- Ravnskov U. High cholesterol may protect against infections and atherosclerosis. *QJM* 2003;96:927–34.
- Jacobs D, Blackburn H, Higgins M, *et al.* Report of the conference on low blood cholesterol: mortality associations. *Circulation* 1992;86:1046–60.
- Iribarren C, Jacobs DR Jr, Sidney S, *et al.* Cohort study of serum total cholesterol and in-hospital incidence of infectious diseases. *Epidemiol Infect* 1998;121:335–47.
- Read SA, Douglas MW. Virus induced inflammation and cancer development. *Cancer Lett* 2014;345:174–81.



32. Ravnskov U, McCully KS, Rosch PJ. The statin-low cholesterol-cancer conundrum. *QJM* 2012;105:383–8.
33. Newman TB, Hulley SB. Carcinogenicity of lipid-lowering drugs. *JAMA* 1996;275:55–60.
34. Neil HA, Hawkins MM, Durrington PN, *et al.* Non-coronary heart disease mortality and risk of fatal cancer in patients with treated heterozygous familial hypercholesterolaemia: a prospective registry study. *Atherosclerosis* 2005;179:293–7.
35. Reddy VS, Bui QT, Jacobs JR, *et al.* Relationship between serum low-density lipoprotein cholesterol and In-hospital mortality following acute myocardial infarction (The lipid paradox). *Am J Cardiol* 2015;115:557–62.
36. Sachdeva A, Cannon CP, Deedwania PC, *et al.* Lipid levels in patients hospitalized with coronary artery disease: an analysis of 136,905 hospitalizations in get with the guidelines. *Am Heart J* 2009;157:111–17.
37. Al-Mallah MH, Hatahet H, Cavalcante JL, *et al.* Low admission LDL-cholesterol is associated with increased 3-year all-cause mortality in patients with non ST segment elevation myocardial infarction. *Cardiol J* 2009;16:227–33.
38. Diamond DM, Ravnskov U. How statistical deception created the appearance that statins are safe and effective in primary and secondary prevention of cardiovascular disease. *Expert Rev Clin Pharmacol* 2015;8:201–10.
39. Kristensen ML, Christensen PM, Hallas J. The effect of statins on average survival in randomised trials, an analysis of end point postponement. *BMJ Open* 2015;5:e007118.
40. de Lorgeril M, Rabaeus M. Beyond confusion and controversy, Can we evaluate the real efficacy and safety of cholesterol-lowering with statins? *J Controversies Biomed Res* 2015;1:67–92.

BMJ Open

Lack of an association or an inverse association between low-density-lipoprotein cholesterol and mortality in the elderly: a systematic review

Uffe Ravnskov, David M Diamond, Rokura Hama, Tomohito Hamazaki, Björn Hammarskjöld, Niamh Hynes, Malcolm Kendrick, Peter H Langsjoen, Aseem Malhotra, Luca Mascitelli, Kilmer S McCully, Yoichi Ogushi, Harumi Okuyama, Paul J Rosch, Tore Schersten, Sherif Sultan and Ralf Sundberg

BMJ Open 2016 6:
doi: 10.1136/bmjopen-2015-010401

Updated information and services can be found at:
<http://bmjopen.bmj.com/content/6/6/e010401>

These include:

References

This article cites 39 articles, 13 of which you can access for free at:
<http://bmjopen.bmj.com/content/6/6/e010401#BIBL>

Open Access

This is an Open Access article distributed in accordance with the Creative Commons Attribution Non Commercial (CC BY-NC 4.0) license, which permits others to distribute, remix, adapt, build upon this work non-commercially, and license their derivative works on different terms, provided the original work is properly cited and the use is non-commercial. See: <http://creativecommons.org/licenses/by-nc/4.0/>

Email alerting service

Receive free email alerts when new articles cite this article. Sign up in the box at the top right corner of the online article.

Topic Collections

Articles on similar topics can be found in the following collections

[Cardiovascular medicine](#) (686)
[Geriatric medicine](#) (247)

Notes

To request permissions go to:
<http://group.bmj.com/group/rights-licensing/permissions>

To order reprints go to:
<http://journals.bmj.com/cgi/reprintform>

To subscribe to BMJ go to:
<http://group.bmj.com/subscribe/>