

ECO REP INSTALLMENT

Energy SLI Discussion: Friday,
December 1st, Ithaca Falls

Created and posted by students and staff from the Office of Energy Management & Sustainability

December 2017

 **97.4**
QUADRILLION

⚙️ Btu of energy consumed in the United States in 2016.

*U.S. Energy Info. Administration

⚙️ *What's a Btu?* A British Thermal Unit is a common way to measure the heat content of fuels. Specifically, it's the amount of heat required to raise the temperature of 1 pound of water by 1°F.

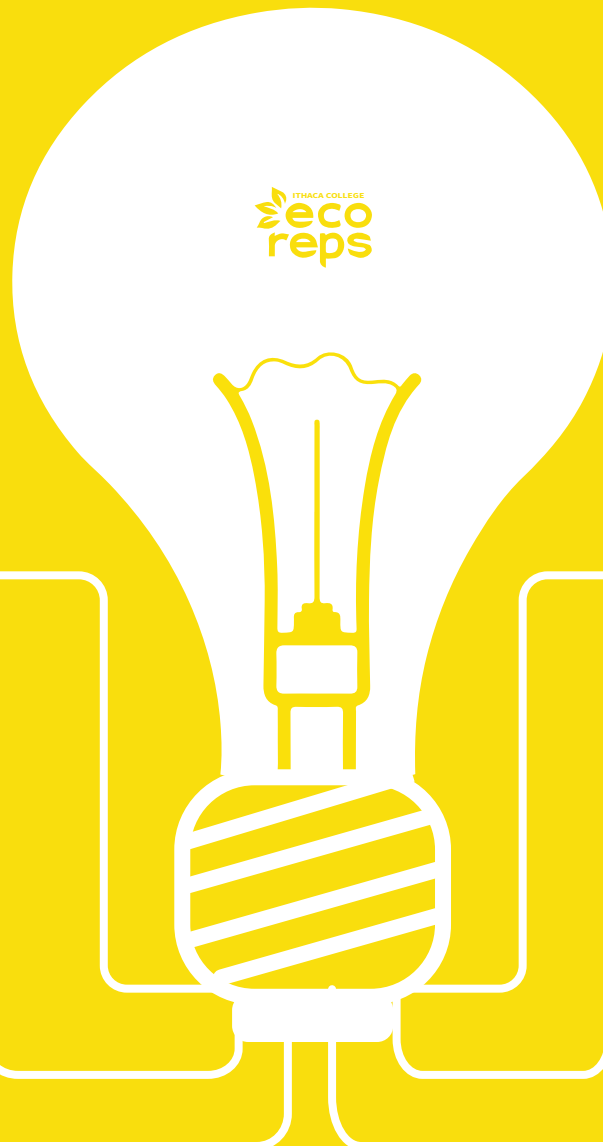
\$3.5
million

⚙️ Cost of Ithaca College's energy use in 2016.

17,791
metric tons

⚙️ CO₂ emissions I.C. was responsible for in 2016.

*Commuting miles (Scope 3) not included



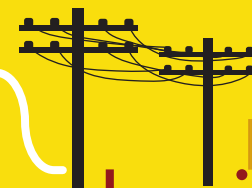
⚙️ Amount of energy used on campus that comes from renewable resources.



⚙️ Systems require 3.14

kWh of energy for each 1 kWh delivered to your home.

*ENERGY STAR



net
metering

⚙️ A billing mechanism that credits solar energy system owners for the electricity they contribute to the grid.