

1917

Mother, my dear: a song with piano accompaniment

Bryceson Treharne

Katherine Nolen

Follow this and additional works at: <http://digitalcommons.ithaca.edu/sheetmusic>

 Part of the [Music Commons](#)

Recommended Citation

Treharne, Bryceson and Nolen, Katherine, "Mother, my dear: a song with piano accompaniment" (1917). *Sheet Music Collection*. 143.
<http://digitalcommons.ithaca.edu/sheetmusic/143>

This Book is brought to you for free and open access by the Library at Digital Commons @ IC. It has been accepted for inclusion in Sheet Music Collection by an authorized administrator of Digital Commons @ IC.

Maroaret Closs Hall 04/90

Brunswick Records
5123

Columbia Records
A 2554

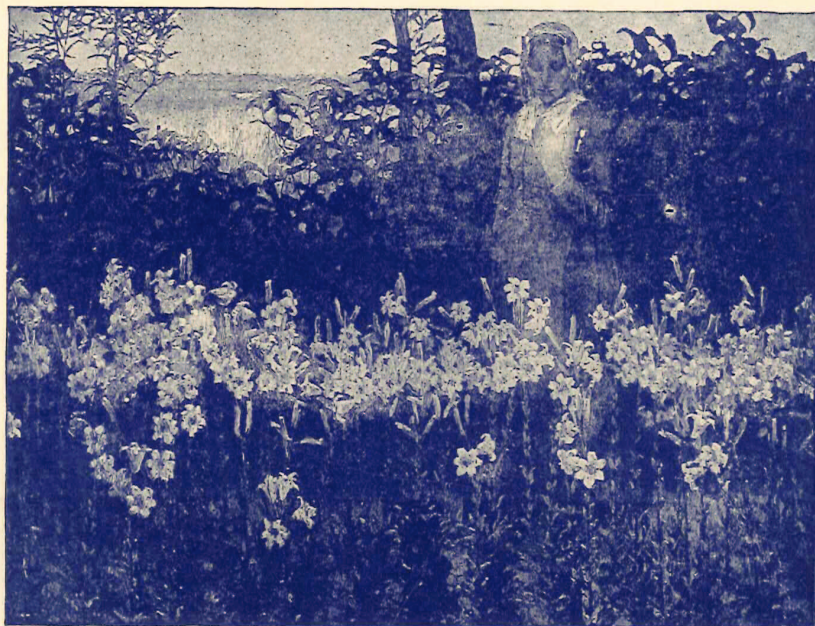
Edison Records
3625 & 82148

Pathé Records
22003

Victor Records
1137 & 64765

Vocalian Records
22036

MOTHER, MY DEAR



Song, with Piano Accompaniment

By

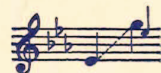
BRYCESON TREHARNE

ITHACA COLLEGE
Founded 1892

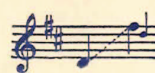
**ITHACA
COLLEGE
LIBRARY**

GIFT OF
DELLA COOK CLARK

Medium in E \flat



→ Low in D



Price, 50 cents



T

Sole Distributor:

G. Schirmer (Inc.)

New York

Mother, my Dear

*Poem by
Katherine Nolen

Music by
Bryceson Treharne

Slowly, with great expression

Piano

p *poco rit.*

The piano introduction consists of two staves in G major, 4/4 time. The right hand features a melodic line with slurs and ties, while the left hand provides a harmonic accompaniment. Dynamics include piano (*p*) and a slight ritardando (*poco rit.*).

p

I'm miss - ing the light in the eyes of you, I'm

p a tempo *mf*

*Red. **

The first line of the song features a vocal melody and piano accompaniment. The piano part includes dynamics *p*, *p a tempo*, and *mf*. A handwritten note "*Red. **" is present below the piano staff.

miss - ing your smile of cheer; And I'm miss - ing so much Just the

The second line continues the vocal melody and piano accompaniment. The piano part includes dynamics *p* and *mf*.

p *poco rit.*

balm of your touch, Oh, I'm miss - ing you, Moth - er, my dear.

The final line of the song features a vocal melody and piano accompaniment. The piano part includes dynamics *p* and a handwritten *poco rit.* marking.

*By permission

Copyright, 1917, by Harold Flammer, Inc.



mf , *p* , *poco accel.*

Moth - er, my dear, Moth - er, my dear, Heart of gold that I'll

mf *p* *poco accel.*

love my life through, Heart of gold that I'll love my life through; When I'm

mf *ten. poco rit.* *a tempo*

mp *colla voce* *a tempo*

tempt - ed by wrong May God make me strong By send - ing a thought of

meno mosso *a tempo*

mf *l. h.* *f* *meno mosso* *a tempo*

Red. * *Red.* * *Red.* * *Red.* *

you, by send - ing a thought of you.

p rit.

dim. *rit.* *p* *p*

p a tempo

For the light in your eyes, that was

p a tempo

Red. *

love I know, And 'twas heav - en it - self in your smile; There was

pow - er to bless In your slight - est ca - res That could make e - ven suf - fer - ing worth

Red. *

while. *mf* Moth - er my dear, *p* Moth - er my dear,

mf *p*

poco accel. *f*

Heart of gold that I'll love my life through, Heart of gold that I'll

poco accel. *mf*

ten. poco rit., *a tempo*, *f*

love my life through; When I'm tempt-ed by wrong May God make me strong By

colla voce *a tempo* *l. h.* *f*

*Red. * Red. * Red. * Red. **

cresc. *rit.*

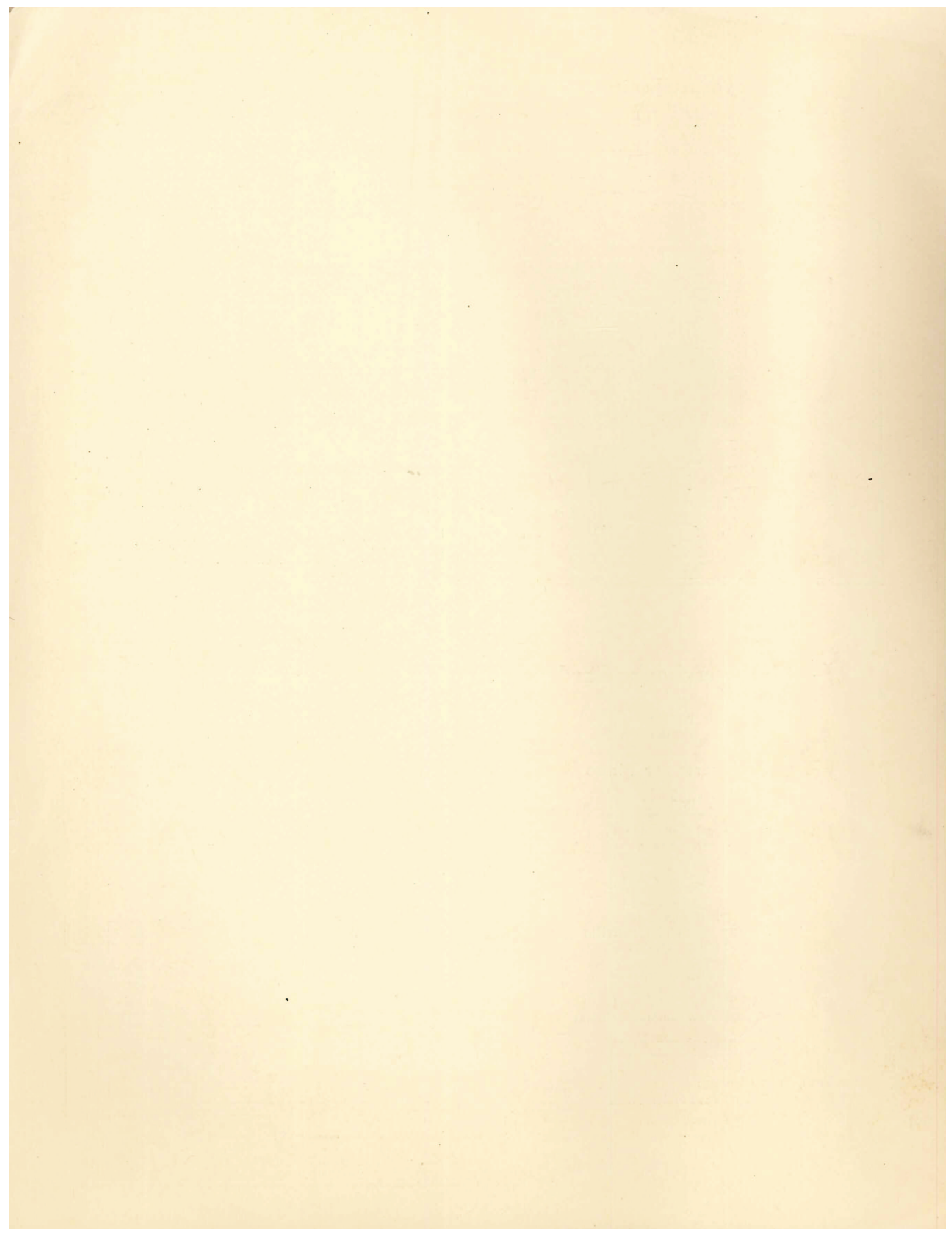
send - ing a thought of you, by send - ing a thought of

rit.

you.

a tempo *dim* *ppp* *ppp*

mf dim. *l. h.*



By The Bend Of The River

Bernhard Haig

Clara Edwards

Languido e grazioso

Voice

By the bend of the riv - er, — Where rush - es are

Piano

dolce

grow - ing, — And wat - ers are flow - ing — Far down to the sea,

On a soft, balm - y June - night, — In the shim - mer - ing moon - light — I know that my

Copyright, 1927, by G. Schirmer, Inc.
Printed in the U. S. A.

By the Bend of the River

By CLARA EDWARDS

A dreamy song of drifting, languid and graceful. "By the bend of the river, where rushes are growing, and waters are flowing far down to the sea, on a soft, balmy June night, in shimmering moonlight, I know that my true love is waiting for me." In 6/8-time, it has the rhythmic swing and sway of a barcarolle.

AVAILABLE FOR

Vocal Solo: High, G♭; Med., E♭; Low, C

Vocal Duet: Soprano and Alto (or Baritone). Arranged by CARL DEIS.

Two-Part Chorus: For Sopranos and Altos (or Baritones). Arranged by CARL DEIS.

Orchestra in G♭

Write for descriptive analytical brochure of Clara Edwards' Songs

In the Luxembourg Gardens

By

KATHLEEN LOCKHART MANNING

A Rêverie for Piano

SUNG BY

Paul Althouse
Alice Mock
Kathryn Meisle
Margery Maxwell
Charles Hackett
Robert Steel
Alma Peterson
Arthur Hackett Granville
Luella Melius
May Peterson
Renie Thornton
Inez Barbour
Tamaki Mura
and many other prominent singers

AVAILABLE FOR

Vocal Solo: High G, Low E♭

Four-Part Chorus: Men's Voices. Arranged by Grace Helen Nash

A 745

In the Luxembourg Gardens

Rêverie

Words and Music by
Kathleen Lockhart Manning

Moderato $\text{♩} = 84$ *very simply*

Voice

When shadows fall I wan - der thro' the gar - dens,

Piano

mf

A-mong the flow'rs and grass, — I lin - ger on the beau - ty

all a - round me. Then two lov - ers pass. —

Copyright, 1925, by G. Schirmer, Inc.
Printed in the U. S. A.